



SOUTH FLORIDA WATER MANAGEMENT DISTRICT

Rev. 1/16

U.S.G.S. Station Name: G-2445	U.S.G.S. Station Number: 261446080062801	Agency: SFWM D	Date of Field Work: 09/26/19
Party Chief: T. AVERY	Field Book: SFWM D #1	Page(s): 69-71	Report Prepared by: DEWBERRY

SITE SPECIFIC DATA

Site Benchmark: G-2445	Benchmark Elevation(s) (NAVD88): 11.27 feet	Corpscon 6.0.1 Conversion Factor (NAVD88 to NGVD29) + 1.57 feet
Well Reference Elevation (NAVD88): 11.21'	Ground Elevation (NAVD88): 11.5'	Pad Elevation (NAVD88): N/A

GEOGRAPHIC DATA

Section 25	Township 48 SOUTH	Range 42 EAST
Well Latitude: 26°14'49.07"N	Well Longitude: 80°06'27.52"W	Location Source: AVERAGED FPRN & TRIMBLE VRSNOW RTK
State Plane Coordinates:	Northing (Y) = 696460'	Easting (X) = 948653'

Notes: NAVD88 – North American Vertical Datum of 1988; NGVD29- National Geodetic Vertical Datum of 1929; **Corpscon 6.0.1** - A U.S. Army Corps of Engineers Engineering Research and Development Center Topographic Engineering Center Alexandria, Virginia Windows-based program to convert coordinates and elevations between datum's using vertcon05.txt and vertcon05.05 files supplied by the U.S. Army Corps of Engineers South Atlantic Division, Jacksonville FL.

PICTURES

Well Site
Latitude: 26°14'49.1"
Longitude: 80°06'27.5"

Benchmark "G-2445"
Latitude: 26°14'49.0"
Longitude: 80°06'27.6"
NAVD88 EL = 11.27 FEET

Not to scale (GoogleEarth product)



SOUTH FLORIDA WATER MANAGEMENT DISTRICT

Rev. 1/16

Well Site and Well Head



Well: 2" PVC
Reference Point: North top edge of
PVC pipe opening

Reference Point El. =
11.21 feet NAVD88

Distance to water =
-7.45 feet from reference point
(09/26/19 at 2:50 PM)

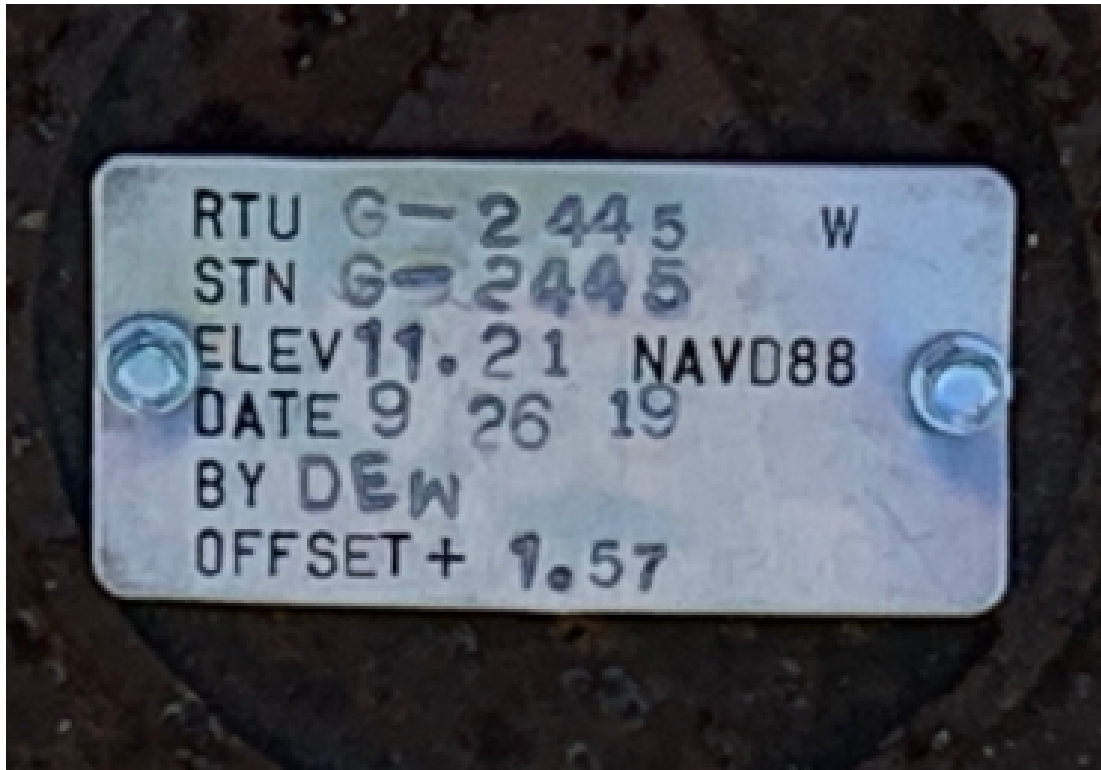




SOUTH FLORIDA WATER MANAGEMENT DISTRICT

Rev. 1/16

New Aluminum Tag





SOUTH FLORIDA WATER MANAGEMENT DISTRICT

Rev. 1/16

USGS RMs

RM 3 – 5/8" Rebar in concrete in 4" PVC



Latitude: 26° 14' 49.2"
Longitude: 80° 06' 28.9"
NAVD88 EL = 11.82 FEET

RM 1 – Aluminum Disc in concrete in 4" PVC



Latitude: 26° 14' 49.7"
Longitude: 80° 06' 28.0"
NAVD88 EL = 11.85 FEET



RM 2 – Nail/Disc in concrete slab



Latitude: 26° 14' 48.3"
Longitude: 80° 06' 28.3"
NAVD88 EL = 11.40 FEET



SOUTH FLORIDA WATER MANAGEMENT DISTRICT

Rev. 1/16

Site Benchmark



Site BM: G2445



Latitude: 26°14'49.0"
Longitude: 80°06'27.6"
NAVD88 EL = 11.27 FEET



SOUTH FLORIDA WATER MANAGEMENT DISTRICT

Rev. 1/16

Source Benchmarks



NGS Benchmark "015" (DO2654)



Latitude: $26^{\circ}14'59.4''$
Longitude: $80^{\circ}06'04.8''$
NAVD88 EL = 6.77 FEET



NGS Benchmark "016" (DO2655)



Latitude: $26^{\circ}14'34.8''$
Longitude: $80^{\circ}06'08.5''$
NAVD88 EL = 7.32 FEET



South Florida Water Management District Benchmark Datasheet

Designation: G-2445	Project Name: USGS Ph 2, BROWARD	Type: V	State Plane Zone: FL East
Stamping: G2445 2019	Field Book Name: W212/W203	Field Book Page: 20/23	
Established By: DEWBERRY / WHIDDEN	Recovered By: N/A	Recovery Date: N/A	
Surveyor: WILLIAM D. DONLEY	Established Date: 9/20/2019 & 9/19/19	Status: New	

GEOGRAPHIC POSITION INFORMATION

Section: 25	Township: 48 SOUTH	Range: 42 EAST
County: BROWARD	Quadrangle: POMPANO BEACH	Quad Index: 1801
NAD83 Adj. Year: 2011	Vertical Datum: NAVD1988	Horizontal Datum: NAVD1983
NGVD29 Elevation (feet): 11.27	NGVD29 Elevation (feet): 12.838	2022 Elevation: N/A
NGVD88 Class: N/A	NGVD29 Class: N/A	Other Elevation: N/A
NGVD88 Order: 3	NGVD29 Order: N/A	Other Elevation Type: N/A
		NGS Source BM(s): "016"
		NGS PID(s): DO2655
		NGS NAVD88 Elev (ft): 7.32
		NGS NAVD88 Elev (m): 2.232
		NGS 2022 Elev (ft): N/A

CORPSCON 6.0.1 CONVERSION FACTOR (NAVD88 TO NGVD29): (A U.S. Army Corps of Engineers Engineering Research and Development Center Topographic Engineering Center Alexandria, Virginia Windows-based program to convert coordinates and elevations between datum's using vertcon05.txt and vertcon05.05 files supplied by the U.S. Army Corps of Engineers South Atlantic Division, Jacksonville FL.)

Vertical Datum Offset: + 1.57	Actual NGS Elevation or ngvd29.txt file: N/A	OPUS Ortho Height: N/A
Northing (Y) (feet): 696456.4	Easting (X) (feet): 948649.8	Source of Latitude & Longitude: AVERAGED FPRN & TRIMBLE VRSNOW RTK
Latitude: 26	14	49.04
DD°	MM'	SS"
Longitude: 80	6	27.55
DD°	MM'	SS"
Latitude (Decimal Degrees): 26.246956	Longitude (Decimal Degrees): -80.107653	

RECOVERY DATA

How to Reach: **1. FROM FL-814, HEAD NORTH ON US-1/N FEDERAL HWY FOR 0.8 MI**
2. TURN LEFT ONTO NE 10TH ST, CONTINUE FOR 0.5 MI TO SHELTAIR EXECUTIVE TERMINAL HANGARS ENTRANCE ON THE RIGHT
3. PASS THROUGH THE CHAIN LINK ROLL-GATE AND TAKE THE IMMEDIATE RIGHT ONTO AN ASPHALT PERIMETER RD, CONTINUE 0.7 MILES TO THE MARK ON THE RIGHT

NOTE: THE MARK IS LOCATED ALONG A FENCE LINE, APPROXIMATELY 90 FEET NE OF FENCE CORNER POST AND 5.0' SE OF MONITORING WELL

Description/Notes: **2" ALUMINUM SFWMD DISK SET IN A POURED IN PLACE CONCRETE MONUMENT**

Notable Landmarks: **POMPANO BEACH AIRPARK**

Other Source Benchmarks: **NGS "015" (DO2654)**

PICTURES

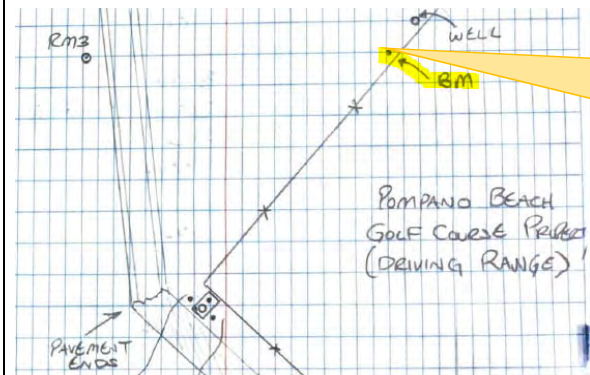
Aerial View of Overall Site



NOT TO SCALE. AERIAL FROM GOOGLE EARTH.

PICTURES

Site Sketch





"015" Benchmark Datasheet (1 of 2)

The NGS Data Sheet

See file [dsdata.pdf](#) for more information about the datasheet.

PROGRAM = datasheet95, VERSION = 8.12.5.2

1 National Geodetic Survey, Retrieval Date = MAY 20, 2019

DO2654 *****

DO2654 DESIGNATION - 015

DO2654 PID - DO2654

DO2654 STATE/COUNTY- FL/BROWARD

DO2654 COUNTRY - US

DO2654 USGS QUAD - POMPANO BEACH (1983)

DO2654

DO2654 *CURRENT SURVEY CONTROL

DO2654

DO2654* NAD 83(1986) POSITION- 26 14 59. (N) 080 06 04. (W) SCALED

DO2654* [NAVD 88](#) ORTHO HEIGHT - 2.063 (meters) 6.77 (feet) ADJUSTED

DO2654

DO2654 GEOID HEIGHT - -25.873 (meters) GEOID12B

DO2654 DYNAMIC HEIGHT - 2.060 (meters) 6.76 (feet) COMP

DO2654 MODELED GRAVITY - 979,072.1 (mgal) NAVD 88

DO2654

DO2654 VERT ORDER - SECOND CLASS II

DO2654

DO2654.The horizontal coordinates were scaled from a topographic map and have

DO2654.an estimated accuracy of +/- 6 seconds.

DO2654.

DO2654.The orthometric height was determined by differential leveling and

DO2654.adjusted by the NATIONAL GEODETIC SURVEY

DO2654.in December 2012.

DO2654

DO2654.Significant digits in the geoid height do not necessarily reflect accuracy.

DO2654.GEOID12B height accuracy estimate available [here](#).

DO2654

DO2654.[Photographs](#) are available for this station.

DO2654

DO2654.The dynamic height is computed by dividing the NAVD 88

DO2654.geopotential number by the normal gravity value computed on the

DO2654.Geodetic Reference System of 1980 (GRS 80) ellipsoid at 45

DO2654.degrees latitude (g = 980.6199 gals.).

DO2654

DO2654.The modeled gravity was interpolated from observed gravity values.

DO2654

DO2654; North East Units Estimated Accuracy

DO2654;SPC FL E - 212,590. 289,800. MT (+/- 180 meters Scaled)

DO2654

DO2654_U.S. NATIONAL GRID SPATIAL ADDRESS: 17RNK897036(NAD 83)

DO2654

DO2654 SUPERSEDED SURVEY CONTROL

DO2654

DO2654.No superseded survey control is available for this station.

DO2654

DO2654_MARKER: DB = BENCH MARK DISK

DO2654_SETTING: 7 = SET IN TOP OF CONCRETE MONUMENT

DO2654_STAMPING: 015 2011

DO2654_MARK LOGO: FL2570

DO2654_PROJECTION: RECESSED 5 CENTIMETERS

DO2654_MAGNETIC: R = STEEL ROD IMBEDDED IN MONUMENT

DO2654_STABILITY: C = MAY HOLD, BUT OF TYPE COMMONLY SUBJECT TO

DO2654+STABILITY: SURFACE MOTION



SOUTH FLORIDA WATER MANAGEMENT DISTRICT

Rev. 1/16

"015" Benchmark Datasheet (2 of 2)

DO2654_SATELLITE: THE SITE LOCATION WAS REPORTED AS SUITABLE FOR
DO2654+SATELLITE: SATELLITE OBSERVATIONS - December 22, 2011

DO2654

DO2654	HISTORY	- Date	Condition	Report By
DO2654	HISTORY	- 20111222	MONUMENTED	STONER

DO2654

DO2654

STATION DESCRIPTION

DO2654

DO2654'DESCRIBED BY STONER AND ASSOCIATES INC 2011 (DWS)

DO2654'THE MARK IS ABOUT 7.7 MI (12.4 KM) SOUTHEAST OF WEST DIXIE BEND, 7.6

DO2654'MI (12.2 KM) SOUTH OF BOCA RATON, 1.7 MI (2.7 KM) EAST-NORTHEAST OF

DO2654'POMPANO BEACH, IN SECTION 30, TOWNSHIP 48 SOUTH, RANGE 43 EAST.

DO2654'OWNERSHIP IS THE FLORIDA DEPARTMENT OF TRANSPORTATION.

DO2654'

DO2654'TO REACH THE MARK FROM THE INTERSECTION OF WEST ATLANTIC BOULEVARD AND

DO2654'NORTH DIXIE HIGHWAY IN POMPANO BEACH, GO EAST ON EAST ATLANTIC

DO2654'BOULEVARD FOR 1.5 MI (2.4 KM) TO THE INTERSECTION OF FEDERAL HIGHWAY

DO2654'(U.S. HIGHWAY 1). TURN LEFT ON NORTH FEDERAL HIGHWAY (U.S. HIGHWAY 1)

DO2654'AND GO NORTH FOR 1.2 MI (1.9 KM) TO THE MARK ON THE LEFT, SET IN THE

DO2654'TOP OF A 10-INCH (25 CM) ROUND CONCRETE MONUMENT RECESSED 0.2 FT (6

DO2654'CM) BELOW THE LEVEL OF THE GROUND AND 0.5 FT (15 CM) BELOW THE LEVEL

DO2654'OF NORTH FEDERAL HIGHWAY (U.S. HIGHWAY 1).

DO2654'

DO2654'LOCATED 80.0 FT (24.4 M) WEST OF THE CENTERLINE OF FEDERAL HIGHWAY

DO2654'(U.S. HIGHWAY 1), 77.0 FT (23.5 M) SOUTH OF THE CENTERLINE OF

DO2654'NORTHEAST 14TH STREET, 46.6 FT (14.2 M) SOUTHWEST OF A METAL LIGHT

DO2654'POLE, 30.9 FT (9.4 M) WEST OF THE WEST EDGE OF A CONCRETE SIDEWALK,

DO2654'12.9 FT (3.9 M) SOUTH OF A SIGN POST, 4.0 FT (1.2 M) EAST OF A FENCE

DO2654'LINE AND 1.0 FT (0.3 M) EAST OF A CARSONITE WITNESS POST.

DO2654'

DO2654'NOTE REBAR ROD IS IMBEDDED IN THE MONUMENT.

*** retrieval complete.

Elapsed Time = 00:00:04



"016" Benchmark Datasheet (1 of 2)

The NGS Data Sheet

See file [dsdata.pdf](#) for more information about the datasheet.

PROGRAM = datasheet95, VERSION = 8.12.5.2

1 National Geodetic Survey, Retrieval Date = MAY 20, 2019

DO2655 *****

DO2655 DESIGNATION - 016

DO2655 PID - DO2655

DO2655 STATE/COUNTY- FL/BROWARD

DO2655 COUNTRY - US

DO2655 USGS QUAD - POMPANO BEACH (1983)

DO2655

DO2655 *CURRENT SURVEY CONTROL

DO2655

DO2655* NAD 83(1986) POSITION- 26 14 34. (N) 080 06 08. (W) SCALED

DO2655* [NAVD 88](#) ORTHO HEIGHT - 2.232 (meters) 7.32 (feet) ADJUSTED

DO2655

DO2655 GEOID HEIGHT - -25.867 (meters) GEOID12B

DO2655 DYNAMIC HEIGHT - 2.229 (meters) 7.31 (feet) COMP

DO2655 MODELED GRAVITY - 979,071.4 (mgal) NAVD 88

DO2655

DO2655 VERT ORDER - SECOND CLASS II

DO2655

DO2655.The horizontal coordinates were scaled from a topographic map and have

DO2655.an estimated accuracy of +/- 6 seconds.

DO2655.

DO2655.The orthometric height was determined by differential leveling and

DO2655.adjusted by the NATIONAL GEODETIC SURVEY

DO2655.in December 2012.

DO2655

DO2655.Significant digits in the geoid height do not necessarily reflect accuracy.

DO2655.GEOID12B height accuracy estimate available [here](#).

DO2655

DO2655.[Photographs](#) are available for this station.

DO2655

DO2655.The dynamic height is computed by dividing the NAVD 88

DO2655.geopotential number by the normal gravity value computed on the

DO2655.Geodetic Reference System of 1980 (GRS 80) ellipsoid at 45

DO2655.degrees latitude (g = 980.6199 gals.).

DO2655

DO2655.The modeled gravity was interpolated from observed gravity values.

DO2655

DO2655; North East Units Estimated Accuracy

DO2655;SPC FL E - 211,820. 289,700. MT (+/- 180 meters Scaled)

DO2655

DO2655_U.S. NATIONAL GRID SPATIAL ADDRESS: 17RNK896028(NAD 83)

DO2655

DO2655 SUPERSEDED SURVEY CONTROL

DO2655

DO2655.No superseded survey control is available for this station.

DO2655

DO2655_MARKER: DB = BENCH MARK DISK

DO2655_SETTING: 7 = SET IN TOP OF CONCRETE MONUMENT

DO2655_STAMPING: 016 2011

DO2655_MARK LOGO: FL2570

DO2655_PROJECTION: RECESSED 5 CENTIMETERS

DO2655_MAGNETIC: R = STEEL ROD IMBEDDED IN MONUMENT

DO2655_STABILITY: C = MAY HOLD, BUT OF TYPE COMMONLY SUBJECT TO

DO2655+STABILITY: SURFACE MOTION



SOUTH FLORIDA WATER MANAGEMENT DISTRICT

Rev. 1/16

"016" Benchmark Datasheet (2 of 2)

DO2655_SATELLITE: THE SITE LOCATION WAS REPORTED AS SUITABLE FOR

DO2655+SATELLITE: SATELLITE OBSERVATIONS - December 22, 2011

DO2655

DO2655	HISTORY	- Date	Condition	Report By
--------	---------	--------	-----------	-----------

DO2655	HISTORY	- 20111222	MONUMENTED	STONER
--------	---------	------------	------------	--------

DO2655

DO2655

STATION DESCRIPTION

DO2655

DO2655'DESCRIBED BY STONER AND ASSOCIATES INC 2011 (DWS)

DO2655'THE MARK IS ABOUT 8.0 MI (12.9 KM) SOUTH OF BOCA RATON, 7.9 MI (12.7

DO2655'KM) SOUTHEAST OF WEST DIXIE BEND, 1.5 MI (2.4 KM) EAST-NORTHEAST OF

DO2655'POMPANO BEACH, IN SECTION 31, TOWNSHIP 48 SOUTH, RANGE 43 EAST.

DO2655'OWNERSHIP IS THE FLORIDA DEPARTMENT OF TRANSPORTATION.

DO2655'

DO2655'TO REACH THE MARK FROM THE INTERSECTION OF WEST ATLANTIC BOULEVARD AND

DO2655'NORTH DIXIE HIGHWAY IN POMPANO BEACH, GO EAST ON EAST ATLANTIC

DO2655'BOULEVARD FOR 1.5 MI (2.4 KM) TO THE INTERSECTION OF FEDERAL HIGHWAY

DO2655'(U.S. HIGHWAY 1). TURN LEFT ON NORTH FEDERAL HIGHWAY (U.S. HIGHWAY 1)

DO2655'AND GO NORTH FOR 0.8 MI (1.3 KM) TO THE MARK ON THE LEFT, SET IN THE

DO2655'TOP OF A 10-INCH (25 CM) ROUND CONCRETE MONUMENT RECESSED 0.2 FT (6

DO2655'CM) BELOW THE LEVEL OF THE GROUND AND 0.5 FT (15 CM) BELOW THE LEVEL

DO2655'OF NORTH FEDERAL HIGHWAY (U.S. HIGHWAY 1).

DO2655'

DO2655'LOCATED 100.0 FT (30.5 M) WEST OF THE CENTERLINE OF FEDERAL HIGHWAY

DO2655'(U.S. HIGHWAY 1), 45.0 FT (13.7 M) SOUTH OF THE CENTERLINE OF

DO2655'NORTHEAST 10TH STREET, 44.6 FT (13.6 M) NORTHWEST OF A METAL SIGNAL

DO2655'POLE, 24.0 FT (7.3 M) NORTH OF THE NORTH EDGE OF A CONCRETE SIDEWALK,

DO2655'14.2 FT (4.3 M) SOUTHEAST OF A WIRE PULL BOX, 8.9 FT (2.7 M) EAST OF A

DO2655'METAL LIGHT POLE AND 1.2 FT (0.4 M) NORTH OF A CARSONITE WITNESS POST.

DO2655'NOTE REBAR ROD IS IMBEDDED IN THE MONUMENT.

*** retrieval complete.

Elapsed Time = 00:00:04



SOUTH FLORIDA WATER MANAGEMENT DISTRICT

Rev. 1/16

Dewberry Field Notes (1 of 3)

Section 880 SFWMD 09/26/19
 Rover # N 1165 USGS Well & BMs
 Temble Network Job # 5009 9999
 HT: G 562 Well Site: G-2445

TASK: ESTABLISH HORIZONTAL LOCATIONS ON WELL MONITORING POINT & REF. MONUMENTATION @ SITE

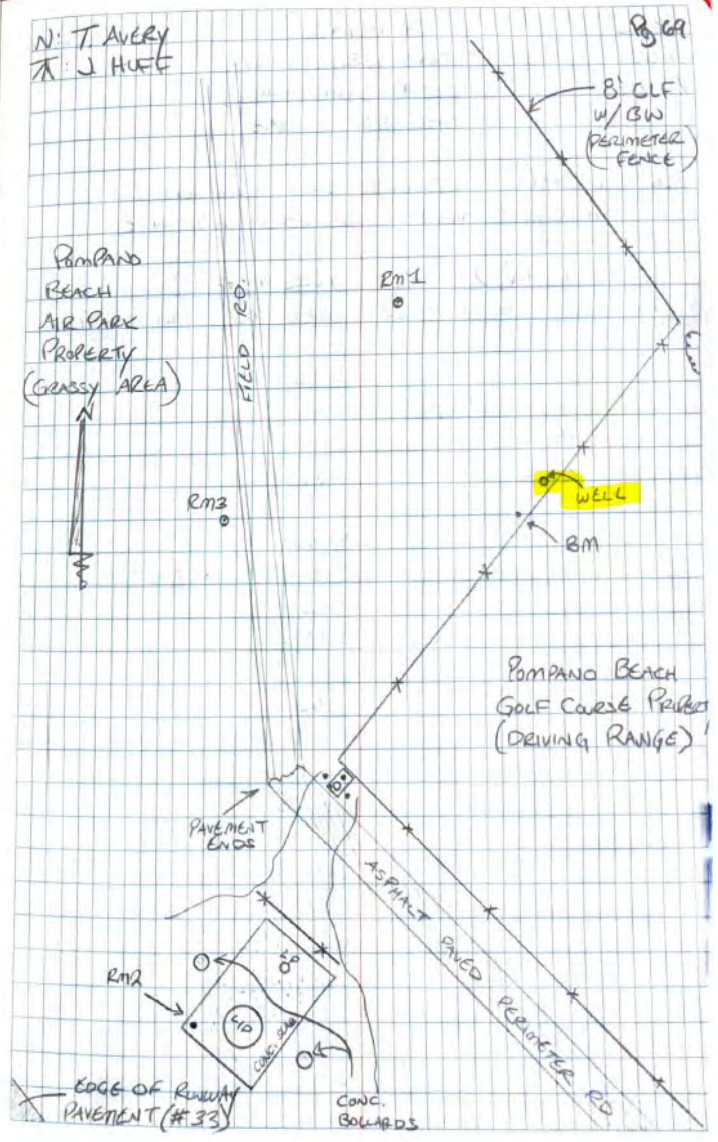
PT#	(N)ERR	(E)ERR	(E)ERR	PT#	DESCRIPTION
5/0	9	-0.059	0.005	F 0.04	5090 CHK-IN BM @ G2445
* LOCATED PT #'s 12054-12058					
5/0	9	-0.009	-0.019	F 0.118	5041 CHK-OUT BM @ G2445

PT#	DESCRIPTION
12054	REC. 3" ALUMINUM DISC IN 4" PVC W/ CONC (RM 1)
12055	REC. 5/8" REBAR IN 4" PVC W/ CONC. (RM 3)
12056	REC. MND "USGS SURVEY MARKER" (RM 2)
12057	MP @ N. EDGE @ TOP OF WELL HEAD (2" PVC IN PIPE)
12058	N. EDGE @ TOP OF CIRCULAR METAL WELL ENCLOSURE

TASK: MEASURE & RECORD A DISTANCE FROM THE MONITORING POINT TO THE WATERLINE

MEASUREMENT: 7.45' ; AS MEASURED FROM THE ^{TOP} N. EDGE OF 2" PVC PIPE INSIDE A RUSTED METAL PIPE LIKE CASING (NOT TO BE CONFUSED W/ THE CIRCULAR METAL ENCLOSURE)
 TIME: 2:50 pm

THIS WELL IS LOCATED ON THE EAST SIDE OF POMPANO BEACH AIR PARK NEAR AN 8' CHAIN LINK FENCE W/ ARBED WIRE THAT SEPARATES THE AIR PARK & POMPANO BEACH GOLF COURSE





SOUTH FLORIDA WATER MANAGEMENT DISTRICT

Rev. 1/16

Dewberry Field Notes (2 of 3)

T/PCO/W		SF WMD		04/26/19		
AT/GP		USGS WEELS & BMS				
S/N: 1434		JOB # 50294499				
		WELL SITE G-2445				
TASK: ELEVATE MONITORING POINT REFERENCE MONUMENTATION, & FORWARD @ WELL SITE						
BACKSIGHT (+)		K		FORESIGHT (-)		ADJ
STA ID	RDS	MEAN	ELEV	RDS	MEAN	ELEV
	5.845		5.93			
BM	5.565	5.5633	1055033 5.63	5.6283	99.7856	11.205
	3.28		168333 5.325			
	56.5/56.5'		60.5/117'			
"	"	"	5.725			
			5.42	5.4217	1001477 11.4116	
			5.12			
			60.5/117'			
"	"	"	5.60			
			5.295	5.2950	1002685 11.5383	
			4.99			
			61/117.5'			
"	"	"	5.74			
			5.385	5.3850	1001785 11.4183	
			5.03			
			71/127.5'			
"	"	"	5.31			
			4.99	4.9867	1005767 11.5466	
			4.66			
			65/121.5'			

N: TAVERY		
K: J. HUFF		
ELEVATION	DESCRIPTION	
1001477	ALUMINIUM DISC FOUND SW OF WELL ENCLOSURE NEAR 0' CLF, STAMPED "SF WMD SURVEY MARK G2445 2019" (DISC WAS SET IN CONCRETE)	
11.27	(Hidden) (NAVD88)	
FORESIGHT (-)	DESCRIPTION	
	MP @ N. TOP EDGE OF PVC PIPE OPENING (2" PVC) (MP (MONITORING POINT))	
	N. TOP EDGE OF CIRCULAR METAL WELL ENCLOSURE	
	GROUND SHOT, N. OF METAL WELL ENCLOSURE	
	RINZ - REC MND IN CONG. SLAB @ WEST CORNER OF SLAB (SLAB IS LOCATED SW OF WELL ENCLOSURE NEAR 0' CLF CORNER)	
	RMB - REC 5/8" REBAR CEMENTED INTO A 4" PVC PIPE, LOCATED WEST OF WELL ENCLOSURE	



SOUTH FLORIDA WATER MANAGEMENT DISTRICT

Rev. 1/16

Dewberry Field Notes (3 of 3)

09/26/19

TOPCON S F W M D
 AT-G2 USGS WELLS & BMS
 S/N: 1439 JOB #: 50099999
 WELL SITE: G-2445

TASK: CONTINUE ELEVATING POINTS OF INTEREST

BACKSIGHT (+)		X		FORESIGHT (-)		ADJ.
STA ID	RDS	MEAN	ELEV	RDS	MEAN	ELEV
			5.29			
BM		105.5633	4.96	4.9583	100.0000	11.8750
		16.833	4.625			
			6.5/123			
* BREAK SET-UP						
	5.17		5.79			
RMI	4.98	4.98	105.5850	5.585	5.5850	100.0000 11.2700
	4.79		16.855	5.38		
* END LEVEL LOOP						

N: T. AVERY
 X: J. HUFF

B-20

FORESIGHT (-)
 DESCRIPTION

RMI - RECOVERED 3.25" ALUMINUM DISC SET IN TOP OF 4" PVC W/ CEMENT @ GROUND LEVEL STAMPED "USGS SURVEY MARK".

BACK @ STARTING POINT (SITE BM)

check In = 0.00

Dewberry



SOUTH FLORIDA WATER MANAGEMENT DISTRICT

Rev. 1/16

Whidden Field Notes (1 of 2)

G-2445			
STA	H/I	—	FL
016 (CA)			7.32
6.099	18.2919		
TP1		5.238	8.028
	5.598	13.629	
TP2		2.786	9.694
	4.636	14.381	
TP3		3.984	8.935
	3.574	18.949	
TP4		3.548	10.901
	5.463	12.804	
TP5		5.118	10.767
	3.286	16.075	
TP6		5.363	10.660
	6.342	17.609	
G-2445 (CM)		5.724	11.279
	3.423	14.306	
TP8		3.504	10.995
	5.726	14.120	

9/30/18 LEVELS Dini S/N 785622 Receiver: 126-4 S/N 5307425789 Receiver: 128-3 S/N 445113539			
STA	H/I	—	FL
TP9			8.764
	3.831	16.187	10.335
TP10			7.143
	4.297	15.529	9.042
TP11			3.652
	4.247	15.949	7.677
TP12			6.021
	5.174	13.123	7.114
016 (CA)			3.795
			7.33
* 30 mph WINDS			
<p>This Loop Began & Ended on NGS MARK <u>016</u>. PIDS: <u>203655</u>.</p> <p>REFER TO FIELD BOOK W203, PAGE 23 FOR NOTES FOR GREAT AND LEVEL LOOP FROM <u>016</u> TO <u>05</u>.</p>			



SOUTH FLORIDA WATER MANAGEMENT DISTRICT

Rev. 1/16

Whidden Field Notes (2 of 2)

STA.	I	H/I	-	IL	
015	7.605	14.435		6.277	(RM)
62147			5.818	9.122	(DISC)
	3.746	12.862			
TP2			5.859	2.31	
	5.450	12.162			
TP3			5.487	7.229	
	2.147	13.432			
TP4			4.690	8.791	
	4.723	12.81			
TP5			2.993	3.869	
	4.781	14.346			
TP6			5.671	8.674	
	5.607	14.391			
016			6.451	7.83	(RM)

09/19/19		4203/73
Dino G/A: 735632		
Receiver RB-3	4618445539	
Receiver RC-4	5307425729	