

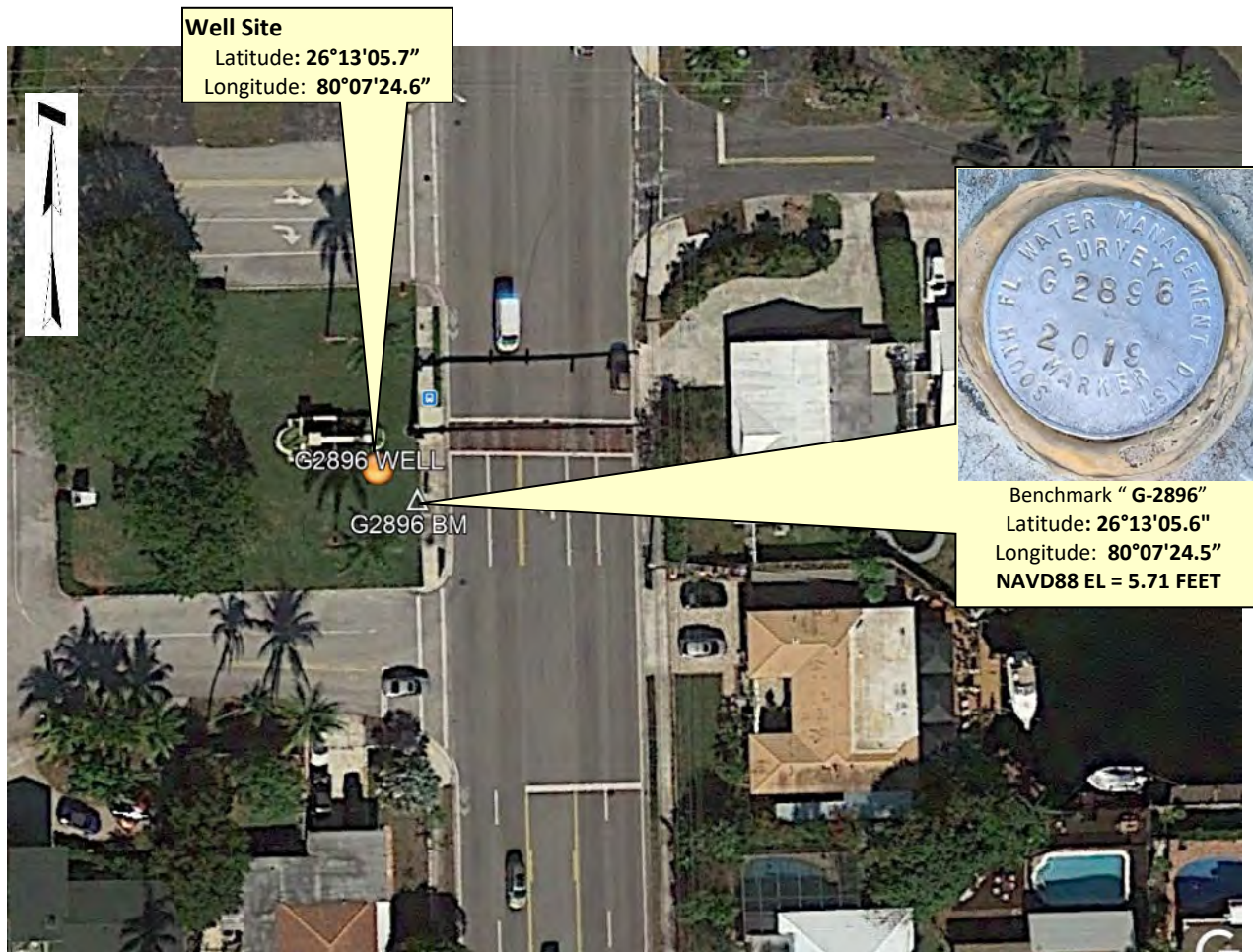


# SOUTH FLORIDA WATER MANAGEMENT DISTRICT

Rev. 1/16

U.S.G.S. Station Name: <b>G-2896</b>	U.S.G.S. Station Number: <b>261304080072501</b>	Agency: <b>SFWM D</b>	Date of Field Work: <b>09/25/19</b>
Party Chief: <b>T. AVERY</b>	Field Book: <b>SFWM D #1</b>	Page(s): <b>54-57</b>	Report Prepared by: <b>DEWBERRY</b>
<b>SITE SPECIFIC DATA</b>			
Site Benchmark: <b>G-2896</b>	Benchmark Elevation(s) (NAVD88): <b>5.71</b>	Corpscon 6.0.1 Conversion Factor (NAVD88 to NGVD29) <b>+ 1.58 feet</b>	
Well Reference Elevation (NAVD88): <b>5.32'</b>		Ground Elevation (NAVD88): <b>5.66'</b>	Pad Elevation (NAVD88): <b>N/A</b>
<b>GEOGRAPHIC DATA</b>			
Section <b>2</b>	Township <b>49 SOUTH</b>		Range <b>42 EAST</b>
Well Latitude: <b>26°13'05.71"N</b>	Well Longitude: <b>80°07'24.61"W</b>	Location Source: <b>AVERAGED FPRN &amp; TRIMBLE VRSNOW RTK</b>	
State Plane Coordinates:	Northing (Y) = <b>685988'</b>		Easting (X) = <b>943525'</b>
<p><b>Notes:</b> NAVD88 – North American Vertical Datum of 1988; NGVD29- National Geodetic Vertical Datum of 1929; Corpscon 6.0.1 - A U.S. Army Corps of Engineers Engineering Research and Development Center Topographic Engineering Center Alexandria, Virginia Windows-based program to convert coordinates and elevations between datum's using vertcon05.txt and vertcon05.05 files supplied by the U.S. Army Corps of Engineers South Atlantic Division, Jacksonville FL.</p>			

### PICTURES



**Not to scale (GoogleEarth product)**



# SOUTH FLORIDA WATER MANAGEMENT DISTRICT

Rev. 1/16

## Well Site and Well Head



Well: 2½" PVC  
Reference Point: North edge of 2½"  
PVC well head

Reference Point El. =  
**5.32 feet NAVD88**

Distance to water =  
-4.42 feet from reference point  
(09/25/19 at 04:15 PM)



# SOUTH FLORIDA WATER MANAGEMENT DISTRICT

Rev. 1/16

## New Aluminum Tag





# ***SOUTH FLORIDA WATER MANAGEMENT DISTRICT***

Rev. 1/16

## **USGS RMs**

THERE ARE NO USGS REFERENCE MONUMENTS IN THE VICINITY OF WELL G-2896.



# SOUTH FLORIDA WATER MANAGEMENT DISTRICT

Rev. 1/16

## Site Benchmark



Site BM: G2896



Latitude: 26°13'05.6"  
Longitude: 80°07'24.5"  
NAVD88 EL = 5.71 FEET



# SOUTH FLORIDA WATER MANAGEMENT DISTRICT

Rev. 1/16

## Source Benchmarks



**NGS Benchmark "020" (DO2659)**



Latitude: 26°12'41.3"  
Longitude: 80°06'25.6"  
NAVD88 EL = 4.37 FEET



**NGS Benchmark "021" (DO2660)**



Latitude: 26°12'40.6"  
Longitude: 80°07'11.5"  
NAVD88 EL = 10.96 FEET



### South Florida Water Management District Benchmark Datasheet

Designation: <b>G-2896</b>	Project Name: <b>USGS Ph 2, BROWARD</b>	Type: <b>V</b>	State Plane Zone: <b>FL East</b>
Stamping: <b>G2896 2019</b>	Field Book Name: <b>W212</b>	Field Book Page: <b>30</b>	
Established By: <b>DEWBERRY / WHIDDEN</b>	Recovered By: <b>N/A</b>	Recovery Date: <b>N/A</b>	
Surveyor: <b>WILLIAM D. DONLEY</b>	Established Date: <b>09/27/19</b>	Status: <b>New</b>	

#### GEOGRAPHIC POSITION INFORMATION

Section: <b>2</b>	Township: <b>49 SOUTH</b>	Range: <b>42 EAST</b>
County: <b>BROWARD</b>	Quadrangle: <b>POMPANO BEACH</b>	Quad Index: <b>1801</b>
NAD83 Adj. Year: <b>2011</b>	Vertical Datum: <b>NAVD1988</b>	Horizontal Datum: <b>NAD1983</b>
NAVD88 Elevation (feet): <b>5.71</b>	NGVD29 Elevation (feet): <b>7.29</b>	2022 Elevation: <b>N/A</b>
NAVD88 Class: <b>N/A</b>	NGVD29 Class: <b>N/A</b>	Other Elevation: <b>N/A</b>
NAVD88 Order: <b>3</b>	NGVD29 Order: <b>N/A</b>	Other Elevation Type: <b>N/A</b>
	NGS Source BM(s): <b>"021"</b>	NGS PID(s): <b>DO2660</b>
	NGS NAVD88 Elev (ft): <b>10.96</b>	NGS NAVD88 Elev (m): <b>3.34</b>
	NGS 2022 Elev (ft): <b>N/A</b>	

CORPSCON 6.0.1 CONVERSION FACTOR (NAVD88 TO NGVD29): (A U.S. Army Corps of Engineers Engineering Research and Development Center Topographic Engineering Center Alexandria, Virginia Windows-based program to convert coordinates and elevations between datum's using vertcon05.txt and vertcon05.05 files supplied by the U.S. Army Corps of Engineers South Atlantic Division, Jacksonville FL)

Vertical Datum Offset: + <b>1.58</b>	Actual NGS Elevation or ngvd29.txt file: <b>N/A</b>	OPUS Ortho Height: <b>N/A</b>
Northing (Y) (feet): <b>685977.7</b>	Easting (X) (feet): <b>943538.4</b>	Source of Latitude & Longitude: <b>AVERAGED FPRN &amp; TRIMBLE VRSNOW RTK</b>
Latitude: <b>26</b>	<b>13</b>	<b>7</b>
DD°	MM'	SS"
Longitude: <b>80</b>	<b>7</b>	<b>24.47</b>
DD°	MM'	SS"
Latitude (Decimal Degrees): <b>26.218225</b>	Longitude (Decimal Degrees): <b>-80.123464</b>	

#### RECOVERY DATA

How to Reach:

1. FROM FL-811/S DIXIE HWY, HEAD EAST ON SW 6TH ST FOR 0.4 MI
2. TURN RIGHT ONTO S CYPRESS RD, CONTINUE 0.3 MI TO THE MARK ON THE RIGHT, LOCATED APPROXIMATELY 100 FEET SOUTH OF THE INTERSECTION OF S CYPRESS ROAD AND SW 9TH STREET

Description/Notes: **2" ALUMINUM SFWMD DISK SET IN SW CORNER OF CONCRETE PAD OF TRAFFIC SIGNAL BOX**

Notable Landmarks:

Other Source Benchmarks: **NGS BM "020" (DO2659)**

#### PICTURES

Aerial View of Overall Site

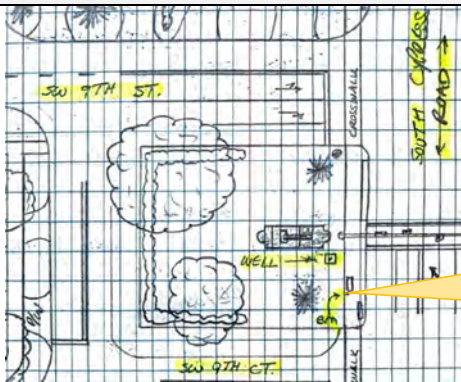


NOT TO SCALE. AERIAL FROM GOOGLE EARTH.



#### PICTURES

Site Sketch





"020" Benchmark Datasheet (1 of 2)

The NGS Data Sheet

See file [dsdata.pdf](#) for more information about the datasheet.

PROGRAM = datasheet95, VERSION = 8.12.5.2  
1 National Geodetic Survey, Retrieval Date = MAY 20, 2019  
DO2659 \*\*\*\*\*  
DO2659 DESIGNATION - 020  
DO2659 PID - DO2659  
DO2659 STATE/COUNTY- FL/BROWARD  
DO2659 COUNTRY - US  
DO2659 USGS QUAD - POMPAÑO BEACH (1983)  
DO2659  
DO2659 \*CURRENT SURVEY CONTROL  
DO2659  
DO2659\* NAD 83(1986) POSITION- 26 12 41. (N) 080 06 25. (W) SCALED  
DO2659\* [NAVD 88](#) ORTHO HEIGHT - 1.331 (meters) 4.37 (feet) ADJUSTED  
DO2659  
DO2659 GEOID HEIGHT - -25.837 (meters) GEOID12B  
DO2659 DYNAMIC HEIGHT - 1.328 (meters) 4.36 (feet) COMP  
DO2659 MODELED GRAVITY - 979,067.7 (mgal) NAVD 88  
DO2659  
DO2659 VERT ORDER - SECOND CLASS II  
DO2659  
DO2659.The horizontal coordinates were scaled from a topographic map and have  
DO2659.an estimated accuracy of +/- 6 seconds.  
DO2659.  
DO2659.The orthometric height was determined by differential leveling and  
DO2659.adjusted by the NATIONAL GEODETIC SURVEY  
DO2659.in December 2012.  
DO2659  
DO2659.Significant digits in the geoid height do not necessarily reflect accuracy.  
DO2659.GEOID12B height accuracy estimate available [here](#).  
DO2659  
DO2659.[Photographs](#) are available for this station.  
DO2659  
DO2659.The dynamic height is computed by dividing the NAVD 88  
DO2659.geopotential number by the normal gravity value computed on the  
DO2659.Geodetic Reference System of 1980 (GRS 80) ellipsoid at 45  
DO2659.degrees latitude (g = 980.6199 gals.).  
DO2659  
DO2659.The modeled gravity was interpolated from observed gravity values.  
DO2659  
DO2659;  
DO2659;SPC FL E - North East Units Estimated Accuracy  
DO2659; - 208,340. 289,250. MT (+/- 180 meters Scaled)  
DO2659  
DO2659\_U.S. NATIONAL GRID SPATIAL ADDRESS: 17RNJ892994(NAD 83)  
DO2659  
DO2659 SUPERSEDED SURVEY CONTROL  
DO2659  
DO2659.No superseded survey control is available for this station.  
DO2659  
DO2659\_MARKER: DB = BENCH MARK DISK  
DO2659\_SETTING: 7 = SET IN TOP OF CONCRETE MONUMENT  
DO2659\_STAMPING: 020 2011  
DO2659\_MARK LOGO: FL2570  
DO2659\_PROJECTION: RECESSED 5 CENTIMETERS  
DO2659\_MAGNETIC: R = STEEL ROD IMBEDDED IN MONUMENT  
DO2659\_STABILITY: B = PROBABLY HOLD POSITION/ELEVATION WELL  
DO2659\_SATELLITE: THE SITE LOCATION WAS REPORTED AS SUITABLE FOR





# SOUTH FLORIDA WATER MANAGEMENT DISTRICT

Rev. 1/16

## "020" Benchmark Datasheet (2 of 2)

D02659+SATELLITE: SATELLITE OBSERVATIONS - December 22, 2011

D02659

D02659	HISTORY	- Date	Condition	Report By
D02659	HISTORY	- 20111222	MONUMENTED	STONER

D02659

D02659

### STATION DESCRIPTION

D02659

D02659'DESCRIBED BY STONER AND ASSOCIATES INC 2011 (DWS)

D02659'THE MARK IS ABOUT 9.3 MI (15.0 KM) SOUTHEAST OF WEST DIXIE BEND, 6.6

D02659'MI (10.6 KM) NORTH-NORTHEAST OF FORT LAUDERDALE, 2.1 MI (3.4 KM)

D02659'SOUTH-SOUTHEAST OF POMPANO BEACH, IN SECTION 12, TOWNSHIP 49 SOUTH,

D02659'RANGE 42 EAST. OWNERSHIP IS THE FLORIDA DEPARTMENT OF TRANSPORTATION.

D02659'TO REACH THE MARK FROM THE INTERSECTION OF WEST ATLANTIC BOULEVARD AND

D02659'NORTH DIXIE HIGHWAY IN POMPANO BEACH, GO EAST ON EAST ATLANTIC

D02659'BOULEVARD FOR 1.5 MI (2.4 KM) TO THE INTERSECTION OF FEDERAL HIGHWAY

D02659'(U.S. HIGHWAY 1). TURN RIGHT ON SOUTH FEDERAL HIGHWAY (U.S. HIGHWAY

D02659'1) AND GO SOUTH FOR 1.4 MI (2.3 KM) TO THE MARK ON THE RIGHT, SET IN

D02659'THE TOP OF A 10-INCH (25 CM) ROUND CONCRETE MONUMENT RECESSED 0.2 FT

D02659'(6 CM) BELOW THE LEVEL OF THE GROUND AND 0.5 FT (15 CM) BELOW THE

D02659'LEVEL OF SOUTH FEDERAL HIGHWAY (U.S. HIGHWAY 1).

D02659'

D02659'LOCATED 82.0 FT (25.0 M) WEST OF THE CENTERLINE OF SOUTH FEDERAL

D02659'HIGHWAY (U.S. HIGHWAY 1), 45.0 FT (13.7 M) SOUTH OF THE CENTERLINE OF

D02659'MCNAB ROAD, 18.8 FT (5.7 M) NORTHEAST OF A TRAFFIC SIGNAL POLE, 16.5

D02659'FT (5.0 M) SOUTHEAST OF A CONCRETE POWER POLE, 15.5 FT (4.7 M)

D02659'NORTHEAST OF THE EAST END OF A CVS PHARMACY SIGN, 9.3 FT (2.8 M)

D02659'SOUTHWEST OF A TRAFFIC SIGNAL POLE AND 1.2 FT (0.4 M) NORTHEAST OF A

D02659'CARSONITE WITNESS POST.

D02659'

D02659'NOTE REBAR ROD IS IMBEDDED IN THE MONUMENT.

\*\*\* retrieval complete.

Elapsed Time = 00:00:04



"021" Benchmark Datasheet (1 of 2)

The NGS Data Sheet

See file [dsdata.pdf](#) for more information about the datasheet.

PROGRAM = datasheet95, VERSION = 8.12.5.2

1 National Geodetic Survey, Retrieval Date = MAY 20, 2019

D02660 \*\*\*\*\*

D02660 DESIGNATION - 021

D02660 PID - D02660

D02660 STATE/COUNTY- FL/BROWARD

D02660 COUNTRY - US

D02660 USGS QUAD - POMPAÑO BEACH (1983)

D02660

\*CURRENT SURVEY CONTROL

D02660

D02660\* NAD 83(1986) POSITION- 26 12 40. (N) 080 07 11. (W) SCALED

D02660\* [NAVD 88](#) ORTHO HEIGHT - 3.340 (meters) 10.96 (feet) ADJUSTED

D02660

D02660 GEOID HEIGHT - -25.795 (meters) GEOID12B

D02660 DYNAMIC HEIGHT - 3.335 (meters) 10.94 (feet) COMP

D02660 MODELED GRAVITY - 979,068.0 (mgal) NAVD 88

D02660

D02660 VERT ORDER - SECOND CLASS II

D02660

D02660.The horizontal coordinates were scaled from a topographic map and have an estimated accuracy of +/- 6 seconds.

D02660.

D02660.The orthometric height was determined by differential leveling and adjusted by the NATIONAL GEODETIC SURVEY

D02660.in December 2012.

D02660

D02660.Significant digits in the geoid height do not necessarily reflect accuracy.

D02660.GEOID12B height accuracy estimate available [here](#).

D02660

D02660.[Photographs](#) are available for this station.

D02660

D02660.The dynamic height is computed by dividing the NAVD 88 geopotential number by the normal gravity value computed on the Geodetic Reference System of 1980 (GRS 80) ellipsoid at 45 degrees latitude (g = 980.6199 gals.).

D02660

D02660.The modeled gravity was interpolated from observed gravity values.

D02660

D02660; North East Units Estimated Accuracy  
D02660;SPC FL E - 208,300. 287,970. MT (+/- 180 meters Scaled)

D02660

D02660\_U.S. NATIONAL GRID SPATIAL ADDRESS: 17RNJ879993(NAD 83)

D02660

SUPERSEDED SURVEY CONTROL

D02660

D02660.No superseded survey control is available for this station.

D02660

D02660\_MARKER: DB = BENCH MARK DISK

D02660\_SETTING: 32 = SET IN A RETAINING WALL OR CONCRETE LEDGE

D02660\_SP\_SET: WING WALL

D02660\_STAMPING: 021 2011

D02660\_MARK LOGO: FL2570

D02660\_MAGNETIC: N = NO MAGNETIC MATERIAL

D02660\_STABILITY: C = MAY HOLD, BUT OF TYPE COMMONLY SUBJECT TO

D02660+STABILITY: SURFACE MOTION



# SOUTH FLORIDA WATER MANAGEMENT DISTRICT

Rev. 1/16

## "021" Benchmark Datasheet (2 of 2)

DO2660\_SATELLITE: THE SITE LOCATION WAS REPORTED AS SUITABLE FOR  
DO2660+SATELLITE: SATELLITE OBSERVATIONS - January 03, 2012

DO2660

DO2660	HISTORY	- Date	Condition	Report By
DO2660	HISTORY	- 20120103	MONUMENTED	STONER

DO2660

DO2660

### STATION DESCRIPTION

DO2660

DO2660'DESCRIBED BY STONER AND ASSOCIATES INC 2012 (DWS)

DO2660'THE MARK IS ABOUT 8.8 MI (14.2 KM) SOUTHEAST OF WEST DIXIE BEND, 6.3  
DO2660'MI (10.1 KM) NORTH-NORTHEAST OF FORT LAUDERDALE, 1.8 MI (2.9 KM) SOUTH  
DO2660'OF POMPANO BEACH, IN SECTION 1, TOWNSHIP 49 SOUTH, RANGE 42 EAST.

DO2660'OWNERSHIP IS THE FLORIDA DEPARTMENT OF TRANSPORTATION.

DO2660'

DO2660'TO REACH THE MARK FROM THE INTERSECTION OF WEST ATLANTIC BOULEVARD AND  
DO2660'NORTH DIXIE HIGHWAY IN POMPANO BEACH, GO EAST ON EAST ATLANTIC

DO2660'BOULEVARD FOR 1.5 MI (2.4 KM) TO THE INTERSECTION OF FEDERAL HIGHWAY  
DO2660'(U.S. HIGHWAY 1). TURN RIGHT ON SOUTH FEDERAL HIGHWAY (U.S. HIGHWAY  
DO2660'1) AND GO SOUTH FOR 1.4 MI (2.3 KM) TO THE INTERSECTION OF EAST MCNAB  
DO2660'ROAD ON THE RIGHT AND SOUTHEAST 15TH STREET ON THE LEFT. TURN RIGHT  
DO2660'ON EAST MCNAB ROAD AND GO EAST FOR 0.8 MI (1.3 KM) TO THE MARK ON THE  
DO2660'RIGHT, SET FLUSH IN THE TOP OF THE NORTHEAST WING WALL OF THE BRIDGE  
DO2660'OVER THE CYPRESS CREEK CANAL.

DO2660'

DO2660'LOCATED 59.3 FT (18.1 M) NORTHEAST OF A CONCRETE POWER POLE NUMBER  
DO2660'85C11, 28.2 FT (8.6 M) SOUTHWEST OF A WOODEN POWER POLE, 24.5 FT (7.5  
DO2660'M) NORTH OF THE CENTERLINE OF EAST MCNAB ROAD AND 24.0 FT (7.3 M)  
DO2660'SOUTHWEST OF THE WEST END OF A CONCRETE WALK.

\*\*\* retrieval complete.

Elapsed Time = 00:00:04



# SOUTH FLORIDA WATER MANAGEMENT DISTRICT

Rev. 1/16

## Dewberry Field Notes (1 of 4)

SHEET # SP-80      S.F.W.M.D.      9/25/19  
 S/N 1165      USGS WELLS & Bms  
 TAMBUK NET      JOB # 50099999  
 HJ G.S02      WELL SITE: G-2896

TASK: ESTABLISH HORIZONTAL LOCATIONS AND ALL REFERENCE MONUMENTATION & WELL MP

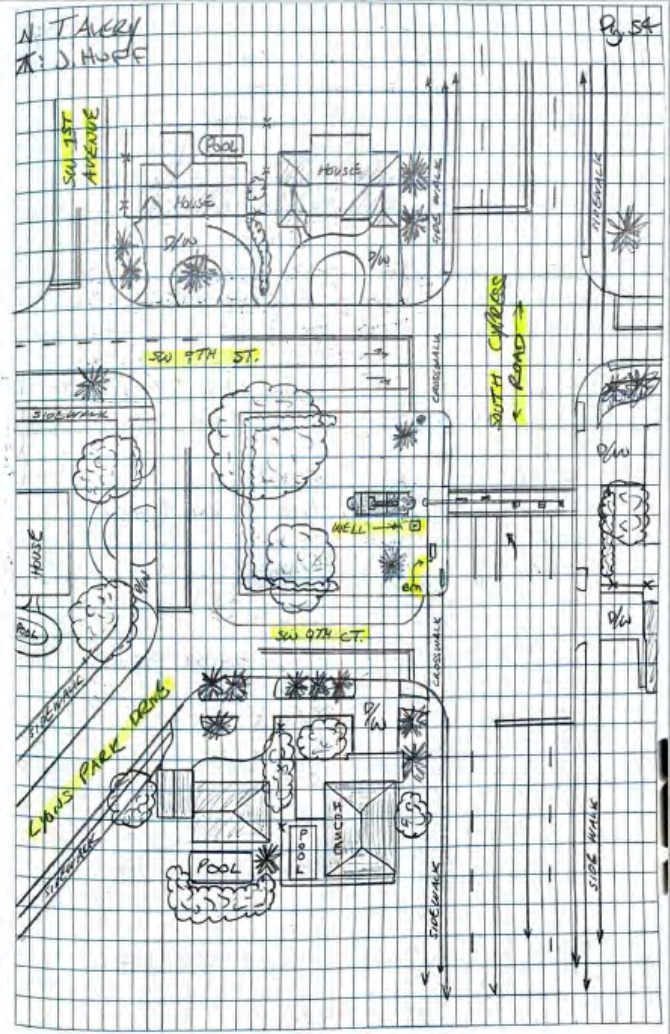
PT#	(N) ERR	(E) ERR	(Z) ERR	PT#	DESCRIPTION	
S/O	15	-0.014	-0.008	F.0.069	5030	CHK IN Bm @ 2896
* LOCATED PT #'s 12038-12039						
S/O	15	-0.033	0.003	C.0.097	5031	CHK OUT Bm @ 2896

PT#	DESCRIPTION
12038	NORTH EDGE OF TOP OF METAL (6") CASING
12039	NORTH EDGE OF TOP OF PVC WELL HEAD (2-1/2")

TASK: MEASURE & RECORD DISTANCE TO WATERLINE FROM MONITORING POINT

MEASUREMENT: 4.42' ; AS MEASURED FROM N. EDGE OF 2-1/2" PVC WELL HEAD  
 TIME: 4:15 PM

THIS WELL IS LOCATED AT THE ENTRANCE TO LYONS PARK NEIGHBORHOOD, JUST OFF THE WEST R/W OF SOUTH CYPRESS ROAD, NORTH OF SW 9TH CT. MORE APPROXIMATELY, THE WELL IS LOCATED





# SOUTH FLORIDA WATER MANAGEMENT DISTRICT

Rev. 1/16

## Dewberry Field Notes (2 of 4)

Tolson S F W. M. D. 09/25/19  
 AT-G2 USGS WELLS & Bms  
 S/N: 1439 Job #: 5009 9949  
 WELL SITE: G-2896

TASK ELEVATE MONITORING POINT, REFERENCE  
 MONUMENTATION, & GROUND LEVEL @ WELL SITE.

ELEVATION DESCRIPTION

REGINA ~~100700~~ Aluminum DISC FOUND IN  
 5.711 LOCK BOX; LOCATED SOUTH EAST  
 (Whittier) (NAD 88)

BACKSIGHT (+)		PI		FORESIGHT (-)			AD
STA ID	RDs	MEAN	ELEV.	RDs	MEAN	ELEV.	ELEV.
	4.735			5.01			
Bm	4.675	4.6767	<del>4.6767</del>	4.90	4.900	<del>4.900</del>	<del>5.527</del>
	4.572		10.2867	4.79			5.487
	21.5/21.5'			22/43.5'			
				5.03			
"	"		"	4.915	4.9150	<del>4.9150</del>	5.522
			"	4.80			5.472
				23/44.5'			
				5.03			
"	"		"	4.925	4.9233	<del>4.9233</del>	5.513
			"	4.815			5.463
				21.5/43'			
				5.035			
"	"		"	4.93	4.9300	<del>4.9300</del>	5.507
			"	4.825			5.457
				21/42.5'			

N: TAVERY  
 X: J HUFF

TOP OF CONCRETE SLAB BASE FOR METAL  
 OF WELL ENCLOSURE, STAMPED "SFWD SURVEY MARKER"

FORESIGHT (-)  
 DESCRIPTIONS

NORTH CORNER OF CONCRETE SLAB AROUND  
 WELL CASING

EAST CORNER OF CONCRETE SLAB AROUND WELL  
 CASING

SOUTH CORNER OF CONCRETE SLAB AROUND WELL  
 CASING

WEST CORNER OF CONCRETE SLAB AROUND WELL  
 CASING



# SOUTH FLORIDA WATER MANAGEMENT DISTRICT

Rev. 1/16

## Dewberry Field Notes (3 of 4)

Tolson  
AT-GZ  
S/N: 1432

S.F.W.M.D.  
LXGS WELLS E. CMS  
JOB #: 6009 9999  
WELL SITE: G-2896

09/28/19

TASK: CONTINUE ELEVATING POINTS OF INTEREST

BACKSIGHT (+)		FORESIGHT (-)		ADJ
STA ID	RDs	MEAN	ELEV.	ELEV.
BM			4.835	
		<del>4.0767</del>	4.725	4.7233
		10.3807	4.610	99.9558
			22' 5" / 49'	5.773
"	"	"	5.175	
		"	5.065	5.0650
		"	4.955	99.6114
		"	22' / 43.5'	5.322
"	"	"	5.015	
		"	4.905	4.9050
		"	4.795	99.7777
		"	22' / 43.5'	5.462
* BREAK SET-UP				
		5.435	5.205	
	5.325	5.325	105.0967	5.10
	5.215		10.807	4.99
	22' / 65.5'			21.5' / 87'
				99.9999
				5.758
				5.709
* END LEVEL LOOP				

Pg. 56

N: T. AVERY  
K: J. HUFF

FORESIGHT (-)  
DESCRIPTION

GROUND SHOT NORTH OF CONCRETE SLAB AROUND WELL CASING

MEASURING POINT @ NORTH EDGE OF PVC PIPE OPENING (2.5" PIPE, SCHED. 40 PVC) (O.D.)

MEASURING POINT @ NORTH EDGE OF METAL CASING

BACK @ STARTING POINT (SITE BM)

CHECK IN = -0.001'





# SOUTH FLORIDA WATER MANAGEMENT DISTRICT

Rev. 1/16

## Whidden Field Notes (1 of 2)

STA	E	H1	-	EV
020				0.57
TP 1	5.829	10.219	6.422	4.038
TP 2	5.292	9.191	5.448	4.324
TP 3	5.410	9.871	5.970	3.878
TP 4	5.183	9.021	5.077	3.948
TP 5	5.195	8.729	2.824	5.929
TP 6	6.638	17.577	5.182	9.485
TP 7	5.670	12.844	6.70	6.159
TP 8	4.037	10.173	11.420	5.965
TP 9	4.917	8.386	4.878	3.701
TP 10	4.260	9.970	3.228	6.442
TP 11	5.966	12.901	1.926	10.109 (0.21 CM)
	3.182	14.782		

DATE	DOZ	IN	FBM	WZ
09/27/19				13.2/30
TP 12	2.58	11.245	6.32	8.461
TP 13	4.950	10.571	6.103	4.615
TP 14	6.123	10.604	5.032	4.539
TP 15	5.670	10.475	5.20	4.763
TP 16	5.487	10.336	5.780	4.697
TP 17	5.07	11.035	4.972	5.368
TP 18	5.154	10.906	5.483	5.551
TP 19	5.132	10.65	5.438	5.208
TP 20	5.723	10.455	5.810	4.73
62896	4.100	10.470	4.744	5.711
TP 22	5.577	10.876	5.190	5.201





# SOUTH FLORIDA WATER MANAGEMENT DISTRICT

Rev. 1/16

## Whidden Field Notes (2 of 2)

62896 (cont.)

STA	X	HI	ELEV
TP 22			5.251
	4.800	10.428	
TP 24			5.308
	5.181	10.207	
TP 25			5.774
	5.001	9.884	
TP 26			5.041
	5.014	10.268	
TP 27			5.325
	4.119	9.043	
TP 28			

62896

STA	X	HI	ELEV
62896			5.1711
	4.673	10.334	
TP 1			5.024
	5.174	11.106	
TP 2			5.772
	8.433	10.765	
TP 3			5.126
	4.660	10.299	
TP 4			5.766
	5.632	10.315	
TP 5			5.625
	5.174	10.265	
TP 6			5.131
	5.584	9.925	
TP 7			3.970
	7.051	14.907	
Q21			5.131
			10.705