



SOUTH FLORIDA WATER MANAGEMENT DISTRICT

Rev. 1/16

| | | | |
|---|--|--------------------------|--|
| U.S.G.S. Station Name: G-2899 | U.S.G.S. Station Number: 260804080092701 | Agency: SFWM D | Date of Field Work: 09/24/19 |
| Party Chief: T. AVERY | Field Book: SFWM D #1 | Page(s): 37-40 | Report Prepared by: DEWBERRY |

SITE SPECIFIC DATA

| | | |
|--|--|--|
| Site Benchmark: G-2899 | Benchmark Elevation(s) (NAVD88): 3.32 feet | Corpscon 6.0.1 Conversion Factor (NAVD88 to NGVD29) + 1.58 |
| Well Reference Elevation (NAVD88): 3.40' | Ground Elevation (NAVD88): 3.54' | Pad Elevation (NAVD88): N/A |

GEOGRAPHIC DATA

| | | |
|--|---|---|
| Section 4 | Township 50 SOUTH | Range 42 EAST |
| Well Latitude: 26°08'05.31"N | Well Longitude: 80°09'37.07"W | Location Source: AVERAGED FPRN & TRIMBLE VRSNOW RTK |
| State Plane Coordinates: | Northing (Y) = 655577' | Easting (X) = 931658' |

Notes: NAVD88 – North American Vertical Datum of 1988; NGVD29- National Geodetic Vertical Datum of 1929; Corpscon 6.0.1 - A U.S. Army Corps of Engineers Engineering Research and Development Center Topographic Engineering Center Alexandria, Virginia Windows-based program to convert coordinates and elevations between datum's using vertcon05.txt and vertcon05.05 files supplied by the U.S. Army Corps of Engineers South Atlantic Division, Jacksonville FL.

PICTURES

Well Site
Latitude: 26°08'05.3"
Longitude: 80°09'37.1"

Benchmark "G-2899"
Latitude: 26°08'04.9"
Longitude: 80°09'37.1"
NAVD88 EL = 3.32 FEET

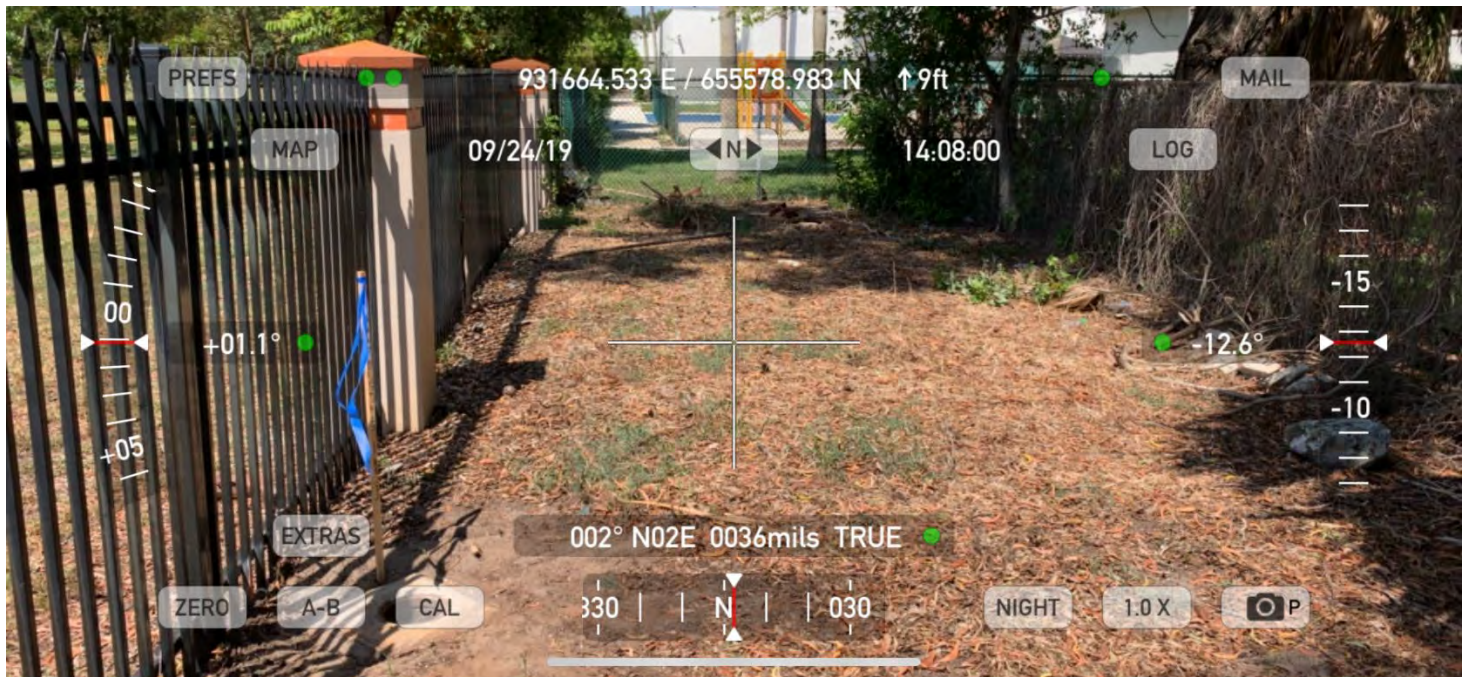
Not to scale (GoogleEarth product)



SOUTH FLORIDA WATER MANAGEMENT DISTRICT

Rev. 1/16

Well Site and Well Head



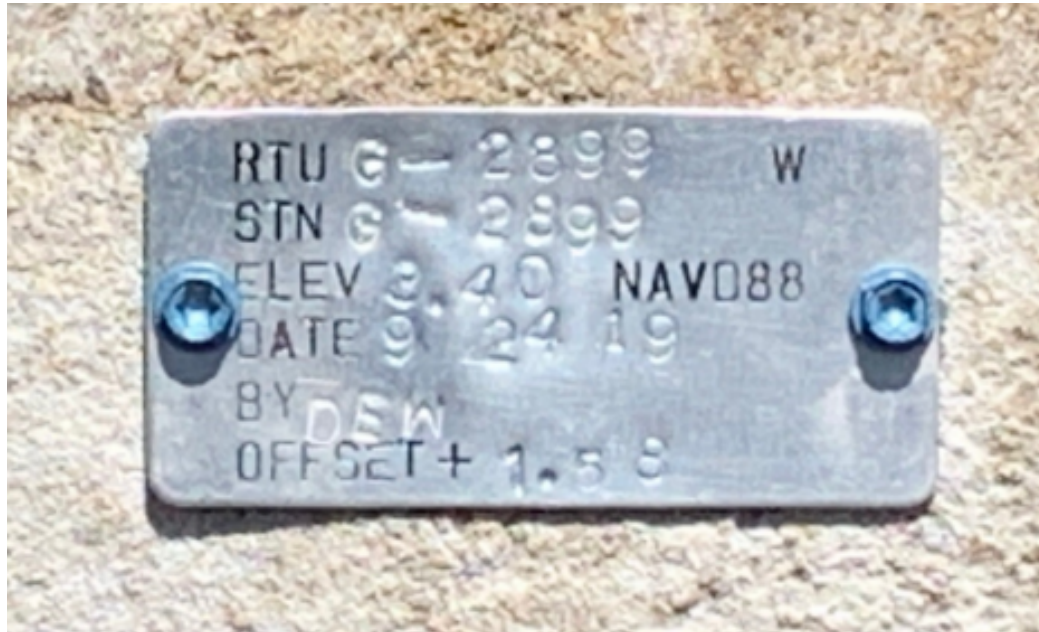
Well: 2" PVC
Reference Point: North edge of top of PVC well head in 7" metal casing
Reference Point El. = **3.40 feet NAVD88**
Distance to water =
-3.35 feet from reference point
(09/24/19 at 2:20)



SOUTH FLORIDA WATER MANAGEMENT DISTRICT

Rev. 1/16

New Aluminum Tag





SOUTH FLORIDA WATER MANAGEMENT DISTRICT

Rev. 1/16

USGS RMs

NOTE: THERE ARE NO USGS REFERENCE MONUMENTS IN THE VICINITY OF WELL G-2899.



SOUTH FLORIDA WATER MANAGEMENT DISTRICT

Rev. 1/16

Site Benchmark



Site BM: G2899



Latitude: 26°08'04.9"
Longitude: 80°09'37.1"
NAVD88 EL = 3.32 FEET





SOUTH FLORIDA WATER MANAGEMENT DISTRICT

Rev. 1/16

Source Benchmarks



NGS Benchmark "P 235" (AD2569)



Latitude: 26°08'13.9"
Longitude: 80°08'18.8"
NAVD88 EL = 6.01 FEET



NGS Benchmark "S 235" (AD2568)



Latitude: 26°08'13.4"
Longitude: 80°07'47.2"
NAVD88 EL = 4.28 FEET



South Florida Water Management District Benchmark Datasheet

| | | | |
|---|---|----------------------------|----------------------------------|
| Designation: G-2899 | Project Name: USGS Ph 2, BROWARD | Type: V | State Plane Zone: FL East |
| Stamping: G2899 2019 | Field Book Name: W203 | Field Book Page: 74 | |
| Established By: DEWBERRY / WHIDDEN | Recovered By: N/A | Recovery Date: N/A | |
| Surveyor: WILLIAM D. DONLEY | Established Date: 10/18/19 | Status: New | |

GEOGRAPHIC POSITION INFORMATION

| | | |
|--------------------------------------|--|-----------------------------------|
| Section: 4 | Township: 50 SOUTH | Range: 42 EAST |
| County: BROWARD | Quadrangle: FORT LAUDERDALE NORTH | Quad Index: 1802 |
| NAD83 Adj. Year: 2011 | Vertical Datum: NAVD1988 | Horizontal Datum: NAD1983 |
| NGVD88 Elevation (feet): 3.32 | NGVD29 Elevation (feet): 4.9 | 2022 Elevation: N/A |
| NGVD88 Class: N/A | NGVD29 Class: N/A | Other Elevation: N/A |
| NGVD88 Order: 3 | NGVD29 Order: 3 | Other Elevation Type: N/A |
| | | NGS Source BM(s): P 235 |
| | | NGS PID(s): AD2569 |
| | | NGS NAVD88 Elev (ft): 6.01 |
| | | NGS NAVD88 Elev (m): 1.833 |
| | | NGS 2022 Elev (ft): N/A |

CORPSCON 6.0.1 CONVERSION FACTOR (NAVD88 TO NGVD29): (A U.S. Army Corps of Engineers Engineering Research and Development Center Topographic Engineering Center Alexandria, Virginia Windows-based program to convert coordinates and elevations between datum's using vertcon05.txt and vertcon05.05 files supplied by the U.S. Army Corps of Engineers South Atlantic Division, Jacksonville FL)

| | | |
|---|---|---|
| Vertical Datum Offset: + 1.58 | Actual NGS Elevation or ngvd29.txt file: N/A | OPUS Ortho Height: N/A |
| Northing (Y) (feet): 655536.7 | Easting (X) (feet): 931658.5 | Source of Latitude & Longitude: AVERAGED FPRN & TRIMBLE VRSNOW RTK |
| Latitude: 26 | 8 | 9 |
| DD° | MM' | SS" |
| Longitude (Decimal Degrees): 26.134697 | Longitude (Decimal Degrees): -80.160294 | |

RECOVERY DATA

How to Reach: **1. FROM FL-838/W SUNRISE BLVD, HEAD SOUTH ON NW 13TH AVE FOR 0.1 MI**
2. TURN RIGHT ONTO NW 9TH ST, CONTINUE 465 FEET TO THE MARK ON THE RIGHT

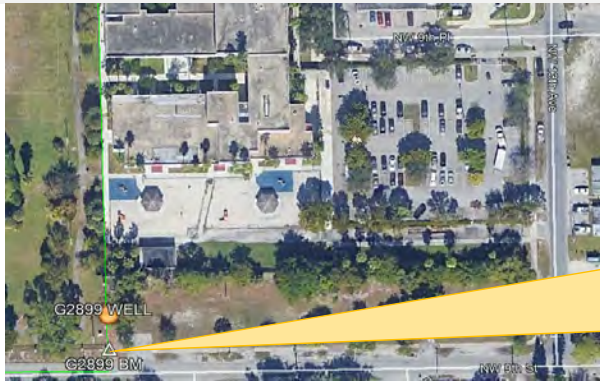
Description/Notes: **2" ALUMINUM SFWMD DISK SET IN A POURED IN PLACE CONCRETE MONUMENT**

Notable Landmarks: **CARTER PARK POOL**

Other Source Benchmarks: **NGS "S 235" (AD2568)**

PICTURES

Aerial View of Overall Site

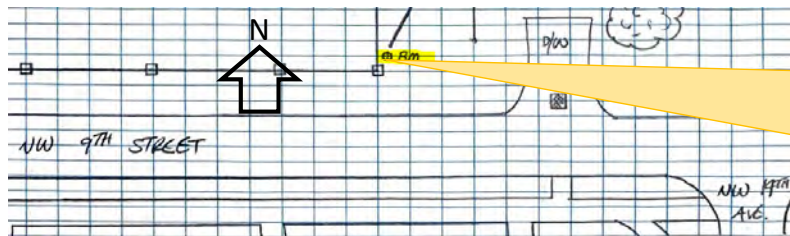


NOT TO SCALE. AERIAL FROM GOOGLE EARTH.



PICTURES

Site Sketch





"P 235" Benchmark Datasheet (1 of 4)

The NGS Data Sheet

See file [d3data.ndf](#) for more information about the datasheet.

PROGRAM = datasheet95, VERSION = 8.12.5.3

1 National Geodetic Survey, Retrieval Date = JUNE 17, 2019

AD2569

AD2569 TIDAL BM - This is a Tidal Bench Mark.

AD2569 DESIGNATION - P 235

AD2569 PID - AD2569

AD2569 STATE/COUNTY- FL/BROWARD

AD2569 COUNTRY - US

AD2569 USGS QUAD - FORT LAUDERDALE NORTH (1995)

AD2569

AD2569 *CURRENT SURVEY CONTROL

AD2569

AD2569* NAD 83(2011) POSITION- 26 08 13.89852(N) 080 08 18.76241(W) ADJUSTED

AD2569* NAD 83(2011) ELLIP HT- -23.854 (meters) (06/27/12) ADJUSTED

AD2569* NAD 83(2011) EPOCH - 2010.00

AD2569* NAVD 88 ORTHO HEIGHT - 1.833 (meters) 6.01 (feet) ADJUSTED

AD2569

AD2569 GEOID HEIGHT - -25.707 (meters) GEOID12B

AD2569 NAD 83(2011) X - 981,291.333 (meters) COMP

AD2569 NAD 83(2011) Y - -5,644,965.181 (meters) COMP

AD2569 NAD 83(2011) Z - 2,792,704.754 (meters) COMP

AD2569 LAPLACE CORR - -3.10 (seconds) DEFLEC12B

AD2569 DYNAMIC HEIGHT - 1.830 (meters) 6.00 (feet) COMP

AD2569 MODELED GRAVITY - 979,060.0 (mgal) NAVD 88

AD2569

AD2569 VERT ORDER - FIRST CLASS I

AD2569

AD2569 Network accuracy estimates per FGDC Geospatial Positioning Accuracy

AD2569 Standards:

AD2569 FGDC (95% conf, cm) Standard deviation (cm) CorrNE

AD2569 Horiz Ellip SD_N SD_E SD_h (unitless)

AD2569 -----

AD2569 NETWORK 1.48 2.45 0.61 0.60 1.25 -0.00822604

AD2569 -----

AD2569 Click [here](#) for local accuracies and other accuracy information.

AD2569

AD2569

AD2569 The horizontal coordinates were established by GPS observations

AD2569 and adjusted by the National Geodetic Survey in June 2012.

AD2569

AD2569 NAD 83(2011) refers to NAD 83 coordinates where the reference frame has

AD2569 been affixed to the stable North American tectonic plate. See

AD2569 [NA2011](#) for more information.

AD2569

AD2569 The horizontal coordinates are valid at the epoch date displayed above

AD2569 which is a decimal equivalence of Year/Month/Day.

AD2569

AD2569 The orthometric height was determined by differential leveling and

AD2569 adjusted by the NATIONAL GEODETIC SURVEY

AD2569 in May 1994.

AD2569

AD2569 Significant digits in the geoid height do not necessarily reflect accuracy.

AD2569 GEOID12B height accuracy estimate available [here](#).

AD2569



SOUTH FLORIDA WATER MANAGEMENT DISTRICT

Rev. 1/16

"P235" Benchmark Datasheet (2 of 4)

AD2569.This Tidal Bench Mark is designated as VM 1904B
 AD2569.by the [CENTER FOR OPERATIONAL OCEANOGRAPHIC PRODUCTS AND SERVICES](#).
 AD2569
 AD2569.[Photographs](#) are available for this station.
 AD2569
 AD2569.The X, Y, and Z were computed from the position and the ellipsoidal ht.
 AD2569
 AD2569.The Laplace correction was computed from DEFLEC12B derived deflections.
 AD2569
 AD2569.The ellipsoidal height was determined by GPS observations
 AD2569.and is referenced to NAD 83.
 AD2569
 AD2569.The dynamic height is computed by dividing the NAVD 88
 AD2569.geopotential number by the normal gravity value computed on the
 AD2569.Geodetic Reference System of 1980 (GRS 80) ellipsoid at 45
 AD2569.degrees latitude (g = 980.6199 gals.).
 AD2569
 AD2569.The modeled gravity was interpolated from observed gravity values.
 AD2569
 AD2569. The following values were computed from the NAD 83(2011) position.
 AD2569

| | North | East | Units | Scale Factor | Converg. |
|------------------|-----------------|-------------|-------|--------------|------------|
| AD2569; SPC FL E | - 200,098.842 | 286,143.401 | MT | 1.00003277 | +0 22 46.2 |
| AD2569; SPC FL E | - 656,490.95 | 938,788.81 | sFT | 1.00003277 | +0 22 46.2 |
| AD2569; UTM 17 | - 2,891,162.550 | 586,114.009 | MT | 0.99969156 | +0 22 46.2 |

| | Elev Factor | x | Scale Factor | = | Combined Factor |
|------------------|--------------|---|--------------|---|-----------------|
| AD2569! SPC FL E | - 1.00000375 | x | 1.00003277 | = | 1.00003652 |
| AD2569! UTM 17 | - 1.00000375 | x | 0.99969156 | = | 0.99969531 |

 AD2569_U.S. NATIONAL GRID SPATIAL ADDRESS: 17RNJ8611491162(NAD 83)
 AD2569
 AD2569 SUPERSEDED SURVEY CONTROL
 AD2569

| AD2569 | NAD 83(2007)- | 26 08 13.89866(N) | 080 08 18.76300(W) | AD(2002.00) | 0 |
|--------|--------------------|-------------------|--------------------|----------------|-----|
| AD2569 | ELLIP H (02/10/07) | -23.836 (m) | | GP(2002.00) | |
| AD2569 | NAD 83(1999)- | 26 08 13.89872(N) | 080 08 18.76326(W) | AD() | 1 |
| AD2569 | ELLIP H (12/12/02) | -23.820 (m) | | GP() | 4 1 |
| AD2569 | NAVD 88 | 1.83 (m) | 6.0 | (F) LEVELING | 3 |
| AD2569 | NAVD 88 (06/15/91) | 1.846 (m) | 6.06 | (F) SUPERSEDED | 1 1 |
| AD2569 | NGVD 29 (??/??/92) | 2.327 (m) | 7.63 | (F) SUPERSEDED | 1 1 |
| AD2569 | NGVD 29 (09/01/92) | 2.319 (m) | 7.61 | (F) ADJUSTED | 1 1 |

 AD2569.Superseded values are not recommended for survey control.
 AD2569
 AD2569.NGS no longer adjusts projects to the NAD 27 or NGVD 29 datums.
 AD2569.See file [dsdata.pdf](#) to determine how the superseded data were derived.
 AD2569
 AD2569_MARKER: DB = BENCH MARK DISK
 AD2569_SETTING: 7 = SET IN TOP OF CONCRETE MONUMENT
 AD2569_STAMPING: P 235 1965
 AD2569_MARK LOGO: CGS
 AD2569_PROJECTION: RECESSED 10 CENTIMETERS
 AD2569_MAGNETIC: N = NO MAGNETIC MATERIAL
 AD2569_STABILITY: C = MAY HOLD, BUT OF TYPE COMMONLY SUBJECT TO
 AD2569+STABILITY: SURFACE MOTION
 AD2569_SATELLITE: THE SITE LOCATION WAS REPORTED AS SUITABLE FOR
 AD2569+SATELLITE: SATELLITE OBSERVATIONS - April 13, 2017
 AD2569

| AD2569 | HISTORY | - Date | Condition | Report By |
|--------|---------|--------|------------|-----------|
| AD2569 | HISTORY | - 1965 | MONUMENTED | CGS |
| AD2569 | HISTORY | - 1973 | GOOD | NGS |
| AD2569 | HISTORY | - 1982 | GOOD | USPSQD |



SOUTH FLORIDA WATER MANAGEMENT DISTRICT

Rev. 1/16

"P 235" Benchmark Datasheet (3 of 4)

| | | | | |
|--------|---------|------------|------|--------|
| AD2569 | HISTORY | - 1987 | GOOD | USPSQD |
| AD2569 | HISTORY | - 1988 | GOOD | USPSQD |
| AD2569 | HISTORY | - 1989 | GOOD | USPSQD |
| AD2569 | HISTORY | - 1990 | GOOD | USPSQD |
| AD2569 | HISTORY | - 19911231 | GOOD | NGS |
| AD2569 | HISTORY | - 20020521 | GOOD | MAPTEC |
| AD2569 | HISTORY | - 20061116 | GOOD | FLDEP |
| AD2569 | HISTORY | - 20080507 | GOOD | FLDT |
| AD2569 | HISTORY | - 20101006 | GOOD | FLDT |
| AD2569 | HISTORY | - 20120731 | GOOD | FA&MM |
| AD2569 | HISTORY | - 20120731 | GOOD | FA&MM |
| AD2569 | HISTORY | - 20120913 | GOOD | AMEC |
| AD2569 | HISTORY | - 20141013 | GOOD | GEOCAC |
| AD2569 | HISTORY | - 20170413 | GOOD | WANTGP |

AD2569

STATION DESCRIPTION

AD2569

AD2569'DESCRIBED BY COAST AND GEODETIC SURVEY 1965

AD2569'2.8 MI N FROM FORT LAUDERDALE.

AD2569'ABOUT 2.85 MILES NORTH ALONG THE FLORIDA EAST COAST RAILWAY

AD2569'FROM THE STATION AT FORT LAUDERDALE, IN SECTION 3, R 42 E,

AD2569'T 50 S, 0.1 MILE NORTH OF MILEPOST 340, NEAR THE CROSSING OF

AD2569'EAST SUNRISE BLVD, 77 FEET NORTH OF THE CENTER LINE OF EAST

AD2569'SUNRISE BLVD, 29.4 FEET NORTHWEST OF AND ACROSS THE NORTHWEST

AD2569'SIDE TRACK FROM NORTHWEST RAIL OF SOUTHBOUND TRACK, 26 FEET

AD2569'SOUTHEAST OF THE CENTER LINE OF NE 5TH TERRACE, 2.9 FEET WEST

AD2569'OF THE WEST CORNER OF A BATTERY WELL FOR SIGNAL, 1.7 FEET

AD2569'NORTHEAST OF A VERTICAL RAIL IN GROUND PROJECTING 3 FEET ABOVE

AD2569'THE LEVEL OF THE GROUND, 2 FEET SOUTHWEST OF A METAL WITNESS

AD2569'POST, ABOUT LEVEL WITH THE TRACK AND SET IN THE TOP OF A CONCRETE

AD2569'POST PROJECTING 3 INCHES ABOVE THE LEVEL OF THE GROUND.

AD2569

STATION RECOVERY (1973)

AD2569

AD2569'RECOVERY NOTE BY NATIONAL GEODETIC SURVEY 1973

AD2569'RECOVERED IN GOOD CONDITION.

AD2569

STATION RECOVERY (1982)

AD2569

AD2569'RECOVERY NOTE BY US POWER SQUADRON 1982

AD2569'CHANGE DESC: MARKER NOW SIX INCHES BELOW NOT THREE INCHES ABOVE

AD2569'GROUND LEVEL AND WITNESS POST MISSING--SHOULD BE SECTION 34 NOT 3.

AD2569

STATION RECOVERY (1987)

AD2569

AD2569'RECOVERY NOTE BY US POWER SQUADRON 1987 (JHH)

AD2569'RECOVERED IN GOOD CONDITION.

AD2569

STATION RECOVERY (1988)

AD2569

AD2569'RECOVERY NOTE BY US POWER SQUADRON 1988 (JHH)

AD2569'RECOVERED IN GOOD CONDITION.

AD2569

STATION RECOVERY (1989)

AD2569

AD2569'RECOVERY NOTE BY US POWER SQUADRON 1989 (JHH)

AD2569'RECOVERED IN GOOD CONDITION.

AD2569

STATION RECOVERY (1990)

AD2569

AD2569'RECOVERY NOTE BY US POWER SQUADRON 1990 (JHH)

AD2569'RECOVERED IN GOOD CONDITION.

AD2569



SOUTH FLORIDA WATER MANAGEMENT DISTRICT

Rev. 1/16

"P 235" Benchmark Datasheet (4 of 4)

AD2569 STATION RECOVERY (1991)
AD2569
AD2569 RECOVERY NOTE BY NATIONAL GEODETIC SURVEY 1991
AD2569 IN FORT LAUDERDALE, AT THE INTERSECTION OF EAST SUNRISE BOULEVARD AND
AD2569 THE FLORIDA EAST COAST RAILROAD, 11.6 M (38.1 FT) NORTH OF THE CENTER
AD2569 OF THE WESTBOUND LANES OF THE BOULEVARD, 9.0 M (29.5 FT) NORTHWEST OF
AD2569 THE NEAR RAIL, 7.5 M (24.6 FT) SOUTHEAST OF AND LEVEL WITH THE
AD2569 CENTERLINE OF NORTHEAST 5TH TERRACE, 0.9 M (3.0 FT) WEST OF THE WEST
AD2569 CORNER OF A BATTERY WELL, 0.3 M (1.0 FT) SOUTH OF A WITNESS POST, AND
AD2569 THE MONUMENT IS 0.1 M (0.3 FT) BELOW THE GROUND SURFACE.
AD2569
AD2569 STATION RECOVERY (2002)
AD2569
AD2569 RECOVERY NOTE BY MAPTECH INCORPORATED 2002 (CDP)
AD2569 RECOVERED AS DESCRIBED.
AD2569
AD2569 STATION RECOVERY (2006)
AD2569
AD2569 RECOVERY NOTE BY FL DEPT OF ENV PRO 2006 (JRH)
AD2569 RECOVERED AS DESCRIBED.
AD2569
AD2569 STATION RECOVERY (2008)
AD2569
AD2569 RECOVERY NOTE BY FLORIDA DEPARTMENT OF TRANSPORTATION 2008 (PED)
AD2569 RECOVERED IN GOOD CONDITION.
AD2569
AD2569 STATION RECOVERY (2010)
AD2569
AD2569 RECOVERY NOTE BY FLORIDA DEPARTMENT OF TRANSPORTATION 2010 (PED)
AD2569 RECOVERED AS DESCRIBED
AD2569
AD2569 STATION RECOVERY (2012)
AD2569
AD2569 RECOVERY NOTE BY FUGRO AERIAL & MOBILE MAPPING INC 2012 (MRY)
AD2569 RECOVERED IN GOOD CONDITION.
AD2569
AD2569 STATION RECOVERY (2012)
AD2569
AD2569 RECOVERY NOTE BY FUGRO AERIAL & MOBILE MAPPING INC 2012
AD2569 RECOVERED IN GOOD CONDITION.
AD2569
AD2569 STATION RECOVERY (2012)
AD2569
AD2569 RECOVERY NOTE BY AMEC EARTH & ENVIRONMENTAL 2012 (RLE)
AD2569 RECOVERED IN GOOD CONDITION.
AD2569
AD2569 STATION RECOVERY (2014)
AD2569
AD2569 RECOVERY NOTE BY GEOCACHING 2014 (KEN)
AD2569 IT IS 11.6 M (3.5 FT) NORTH OF THE CENTER OF THE WESTBOUND LANES OF
AD2569 THE BOULEVARD, 9.0 M (2.7 FT) NORTHWEST OF THE NEAR RAIL, 7.5 M (2.3
AD2569 FT) SOUTHEAST OF AND LEVEL WITH THE CENTERLINE OF NORTHEAST FIFTH
AD2569 TERRACE AND 2 FT (0.6 M) SOUTHWEST OF A WITNESS POST.
AD2569
AD2569 STATION RECOVERY (2017)
AD2569
AD2569 RECOVERY NOTE BY WANTMAN GROUP INC 2017 (JKA)
AD2569 RECOVERED IN GOOD CONDITION.

*** retrieval complete.
Elapsed Time = 00:00:04



"S 235" Benchmark Datasheet (1 of 3)

The NGS Data Sheet

See file [dsdata.pdf](#) for more information about the datasheet.

PROGRAM = datasheet95, VERSION = 8.12.5.3

1 National Geodetic Survey, Retrieval Date = JUNE 17, 2019

AD2568 +.....

AD2568 DESIGNATION - S 235
AD2568 PID - AD2568
AD2568 STATE/COUNTY- FL/BROWARD
AD2568 COUNTRY - US
AD2568 USGS QUAD - FORT LAUDERDALE NORTH (1995)

AD2568 *CURRENT SURVEY CONTROL

AD2568* NAD 83(1986) POSITION- 26 08 13.44 (N) 080 07 47.16 (W) HD HELD1
AD2568* NAVD 88 ORTHO HEIGHT - 1.304 (meters) 4.28 (feet) ADJUSTED
AD2568 GEOID HEIGHT - -25.735 (meters) GEOID12B
AD2568 DYNAMIC HEIGHT - 1.302 (meters) 4.27 (feet) COMP
AD2568 MODELED GRAVITY - 979,059.7 (mgal) NAVD 88

AD2568 VERT ORDER - FIRST CLASS I

AD2568.The horizontal coordinates were determined by differentially corrected
AD2568.hand held GPS observations or other comparable positioning techniques
AD2568.and have an estimated accuracy of +/- 3 meters.

AD2568.The orthometric height was determined by differential leveling and
AD2568.adjusted by the NATIONAL GEODETIC SURVEY
AD2568.in May 1994.

AD2568.Significant digits in the geoid height do not necessarily reflect accuracy.
AD2568.GE01D12B height accuracy estimate available [here](#).

AD2568.[Photographs](#) are available for this station.

AD2568.The dynamic height is computed by dividing the NAVD 88
AD2568.geopotential number by the normal gravity value computed on the
AD2568.Geodetic Reference System of 1980 (GRS 80) ellipsoid at 45
AD2568.degrees latitude (g = 980.6199 gals.).

AD2568.The modeled gravity was interpolated from observed gravity values.

AD2568; North East Units Estimated Accuracy
AD2568;SPC FL E - 200,090.6 287,021.4 MT (+/- 3 meters HH1 GPS)

AD2568 U.S. NATIONAL GRID SPATIAL ADDRESS: 17RNJ8699191154(NAD 83)

AD2568 SUPERSEDED SURVEY CONTROL

AD2568 NAVD 88 (06/15/91) 1.316 (m) 4.32 (f) SUPERSEDED 1 1
AD2568 NGVD 29 (??/??/92) 1.797 (m) 5.90 (f) SUPERSEDED 1 1
AD2568 NGVD 29 (09/01/92) 1.791 (m) 5.88 (f) ADJUSTED 1 1

AD2568.Superseded values are not recommended for survey control.

AD2568.NGS no longer adjusts projects to the NAD 27 or NGVD 29 datums.



SOUTH FLORIDA WATER MANAGEMENT DISTRICT

Rev. 1/16

"S 235" Benchmark Datasheet (2 of 3)

AD2568. See file [dsdata.pdf](#) to determine how the superseded data were derived.

AD2568

AD2568_MARKER: DB = BENCH MARK DISK

AD2568_SETTING: 31 = SET IN A PAVEMENT SUCH AS STREET, SIDEWALK, CURB, ETC.

AD2568_SP_SET: STORM DRAIN

AD2568_STAMPING: S 235 1965

AD2568_MARK LOGO: CGS

AD2568_STABILITY: D = MARK OF QUESTIONABLE OR UNKNOWN STABILITY

AD2568_SATELLITE: THE SITE LOCATION WAS REPORTED AS NOT SUITABLE FOR

AD2568+SATELLITE: SATELLITE OBSERVATIONS - March 14, 2010

AD2568

| AD2568 | HISTORY | - Date | Condition | Report By |
|--------|---------|------------|------------|-----------|
| AD2568 | HISTORY | - 1965 | MONUMENTED | CGS |
| AD2568 | HISTORY | - 1982 | GOOD | USPSQD |
| AD2568 | HISTORY | - 1987 | GOOD | USPSQD |
| AD2568 | HISTORY | - 1988 | GOOD | USPSQD |
| AD2568 | HISTORY | - 1989 | GOOD | USPSQD |
| AD2568 | HISTORY | - 1990 | GOOD | USPSQD |
| AD2568 | HISTORY | - 19910624 | GOOD | USPSQD |
| AD2568 | HISTORY | - 19911231 | GOOD | NGS |
| AD2568 | HISTORY | - 20021114 | GOOD | USPSQD |
| AD2568 | HISTORY | - 20100314 | GOOD | GEOCAC |

AD2568

STATION DESCRIPTION

AD2568

AD2568'DESCRIBED BY COAST AND GEODETIC SURVEY 1965

AD2568'3.4 MI NE FROM FORT LAUDERDALE.

AD2568'ABOUT 2.85 MILES NORTH ALONG THE FLORIDA EAST COAST RAILWAY

AD2568'FROM THE STATION AT FORT LAUDERDALE, THENCE 0.55 MILE EAST ALONG

AD2568'SUNRISE BLVD, AT THE INTERSECTION OF NE 14TH AVENUE AND SUNRISE

AD2568'BLVD, SET IN THE TOP OF THE NORTHEAST CORNER OF A 4-BY-3 1/2

AD2568'FOOT CONCRETE BASE FOR A MANHOLE WITH COVER, 74 FEET NORTHEAST

AD2568'OF THE NORTHEAST CORNER OF THE FORT LAUDERDALE PUBLIC LIBRARY,

AD2568'30 FEET WEST OF THE CENTER LINE OF NE 14TH AVENUE, 24 FEET SOUTH

AD2568'OF THE EXTENDED CURB OF SUNRISE BLVD, AND ABOUT LEVEL WITH THE

AD2568'BLVD. IN SECTION 2, R 42 E, T 50 S.

AD2568

STATION RECOVERY (1982)

AD2568

AD2568'RECOVERY NOTE BY US POWER SQUADRON 1982

AD2568'RECOVERED IN GOOD CONDITION.

AD2568

STATION RECOVERY (1987)

AD2568

AD2568'RECOVERY NOTE BY US POWER SQUADRON 1987 (JHH)

AD2568'RECOVERED IN GOOD CONDITION.

AD2568

STATION RECOVERY (1988)

AD2568

AD2568'RECOVERY NOTE BY US POWER SQUADRON 1988 (JHH)

AD2568'RECOVERED IN GOOD CONDITION.

AD2568

STATION RECOVERY (1989)

AD2568

AD2568'RECOVERY NOTE BY US POWER SQUADRON 1989 (JHH)

AD2568'RECOVERED IN GOOD CONDITION.

AD2568

STATION RECOVERY (1990)

AD2568

AD2568'RECOVERY NOTE BY US POWER SQUADRON 1990 (JHH)

AD2568'RECOVERED IN GOOD CONDITION.

AD2568

STATION RECOVERY (1991)

AD2568



SOUTH FLORIDA WATER MANAGEMENT DISTRICT

Rev. 1/16

"S 235" Benchmark Datasheet (3 of 3)

AD2568

AD2568'RECOVERY NOTE BY US POWER SQUADRON 1991 (JHH)

AD2568'RECOVERED IN GOOD CONDITION.

AD2568

AD2568 STATION RECOVERY (1991)

AD2568

AD2568'RECOVERY NOTE BY NATIONAL GEODETIC SURVEY 1991

AD2568'IN FORT LAUDERDALE, AT THE INTERSECTION OF EAST SUNRISE BOULEVARD AND

AD2568'NORTHEAST 14TH AVENUE, IN THE NORTHEAST CORNER OF A STORM DRAIN, 19.2

AD2568'M (63.0 FT) NORTHEAST OF THE NORTHEAST CORNER OF THE FORT LAUDERDALE

AD2568'PUBLIC LIBRARY, 8.9 M (29.2 FT) WEST OF AND LEVEL WITH THE AVENUE

AD2568'CENTERLINE, 8.5 M (27.9 FT) SOUTH OF THE CENTER OF THE EASTBOUND

AD2568'LANES OF THE BOULEVARD, 3.0 M (9.8 FT) SOUTH OF A FIRE HYDRANT, AND

AD2568'0.3 M (1.0 FT) NORTHWEST OF A WITNESS POST.

AD2568

AD2568 STATION RECOVERY (2002)

AD2568

AD2568'RECOVERY NOTE BY US POWER SQUADRON 2002 (CR)

AD2568'RECOVERED IN GOOD CONDITION.

AD2568

AD2568 STATION RECOVERY (2010)

AD2568

AD2568'RECOVERY NOTE BY GEOCACHING 2010 (RLM)

AD2568'RECOVERED IN GOOD CONDITION.

*** retrieval complete.

Elapsed Time = 00:00:04



SOUTH FLORIDA WATER MANAGEMENT DISTRICT

Rev. 1/16

Dewberry Field Notes (1 of 4)

SPECTRA SP20 S F W M D 09/29/19
 SN: 1165 (RIVER) P.S.G.S. WELLS & PWS
 TRIMBLE NET JOB # 50099999
 P RIVER HT: G.SUR WELL SITE: G-2899

TASK OBTAIN HORIZONTAL LOCATIONS ON ALL
 PWS FOR WELL & MEASURING POINTS

STORED AS

| PT # | (N) ELEV | (E) ELEV | (Z) ELEV | PT # | DESC | DEPART |
|--------------------------|----------|----------|----------|------|---------|--------|
| S/O 17 | -0.019 | 0.058 | 0.002 | 5024 | CHK-IN | 30 SEC |
| * LOCATE PTS 12030-12031 | | | | | | |
| S/O 17 | 0.023 | 0.093 | 0.007 | 5025 | CHK-OUT | 30 SEC |

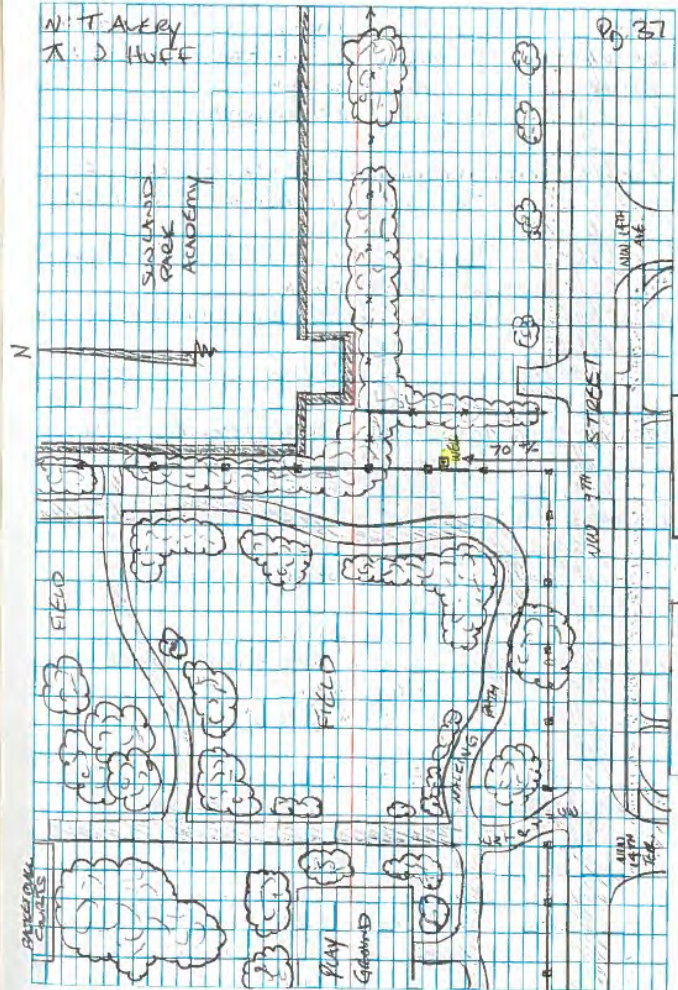
| PT # | DESCRIPTION |
|-------|---------------------------------|
| 12030 | N. EDGE OF TOP OF PVC WELL HEAD |
| 12031 | N. EDGE OF TOP OF WELL CASING |

WATER LEVEL READING WAS TAKEN @
 2.20 ft ± 3.35' FROM TOP OF PVC
 WELL HEAD

SIZE OF PVC WELL HEAD = 2.0" I.D.
 METAL CASING (ENCLOSURE) = 7.0" I.D.

I.D. = INSIDE DIAMETER

* THIS WELL SITE WAS LOCATED APPROX. 75' NORTH
 OF NW 9TH ST. (FROM E. OF ROAD). THE SITE IS
 SET IN A 2' x 2' CONCRETE SLAB. THERE WAS
 NO CAP ON METAL CASING OR WELL HEAD ENCLOSURE.





SOUTH FLORIDA WATER MANAGEMENT DISTRICT

Rev. 1/16

Dewberry Field Notes (2 of 4)

Topcon S.F.W.M.D. 09/24/19
 AT-GPS USGS WELLS & Bms
 s/n: 14239 Job# 50999999
 WELL SITE: G-2899

TASK: ELEVATE MONITORING POINT, (4) CORNERS OF CONCRETE AROUND WELL CASING, & GROUND (N. OF CONC. SLAB AROUND WELL CASING.)

| EQUIN @ | ELEVATION | DESCRIPTION |
|---------|----------------------------|-------------------------------|
| | 100.00 3.32' | ALUMINUM DISC SET IN CONCRETE |

| STA ID | READING | MEAN ELEV | IN | MEAN ELEV | ADJ ELEV |
|--------|---------|-----------|---------------------|------------|---------------------------------|
| | 5.445 | | | 5.105 | |
| Bm | 5.325 | 5.325 | 105.2550 | 5.005 | 5.005 100.527 3.640 |
| | 5.205 | | 8.645' | 4.905 | |
| | 24'/24' | | | 20'/24' | |
| | | | 5.10 | | |
| Bm | | | 105.2550 | 5.00 | 4.983 100.527 3.647 |
| | | | 8.645 | 4.895 | |
| | | | | 20.5/44.5' | |
| | | | 5.10 | | |
| Bm | | | 105.2550 | 5.005 | 5.003 100.527 3.642 |
| | | | 8.645 | 4.905 | |
| | | | | 19.5' | |
| | | | 5.105 | | |
| Bm | | | 105.2550 | 5.005 | 5.0050 100.527 3.640 |
| | | | 8.645 | 4.905 | |
| | | | | 20'/24 | |

Pg 38

N: T. AVERY
A: J. HUFF

STAMPED: "SOUTH FLORIDA WATER MANAGEMENT DIST SURVEY MARKER G-2899, 2019"

FORESIGHT (+)
DESCRIPTION

NW CORNER OF CONC. SLAB AROUND WELL CASING

NE CORNER OF CONC. SLAB AROUND WELL CASING

SW CORNER OF CONC. SLAB AROUND WELL CASING

SE CORNER OF CONC. SLAB AROUND WELL CASING



SOUTH FLORIDA WATER MANAGEMENT DISTRICT

Rev. 1/16

Dewberry Field Notes (3 of 4)

Tolson S.F.W.M.D. 9/24/19
 AT-G2 USGS WELLS & BMS
 S/N: 143a Job #: 50099999
 WELL SITE: G-2899

TASK: CONTINUE TO ELEVATE POINTS OF INTEREST

| BACKSIGHT (+) | TA | FORESIGHT (-) | ADJ. | | |
|---------------|------------------------------|---------------|----------|------------------------------------|-------|
| STA ID | READINGS | MEAN ELEV. | READINGS | MEAN ELEV. | ELEV. |
| Bm | 105.3280 8.645 | 5.11 | 5.1100 | 100.2150 21' 45" | 3.555 |
| | | 5.345 | | | |
| Bm | 105.3280 8.645 | 5.24 | 5.2433 | 100.0811 20' 44" | 3.402 |
| | | 5.09 | | | |
| Bm | 105.3280 8.645 | 4.99 | 4.9983 | 100.2867 20.5' 44.5" | 3.647 |

*BENCH SET-UP

| | | | | | |
|----|-----------|--------------------|-----------|---------|--------|
| MP | 5.12 | 105.347 | 5.475 | | |
| | 5.02 | 5.02 | 105.3569 | 5.360 | 5.3583 |
| | 4.92 | 8.667 | 5.240 | 99.9884 | 3.308 |
| | 20' 44.5" | | 23.5' 88" | | |

*END LEVEL LOOP

N. TAVERY Pg. 39
T: J. HUFF

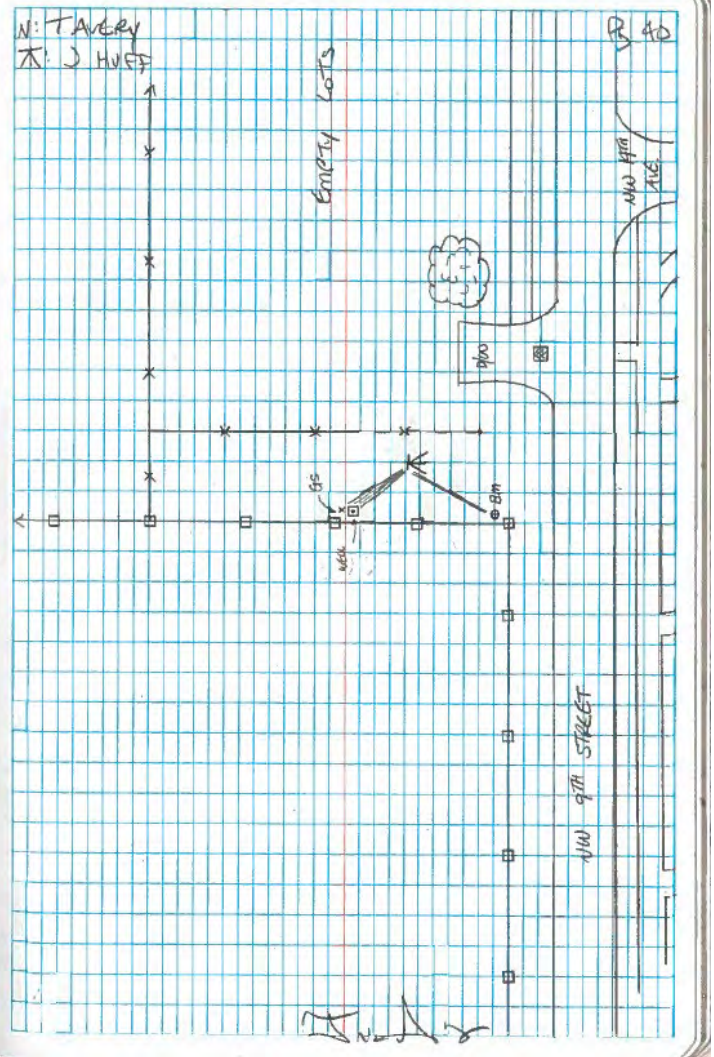
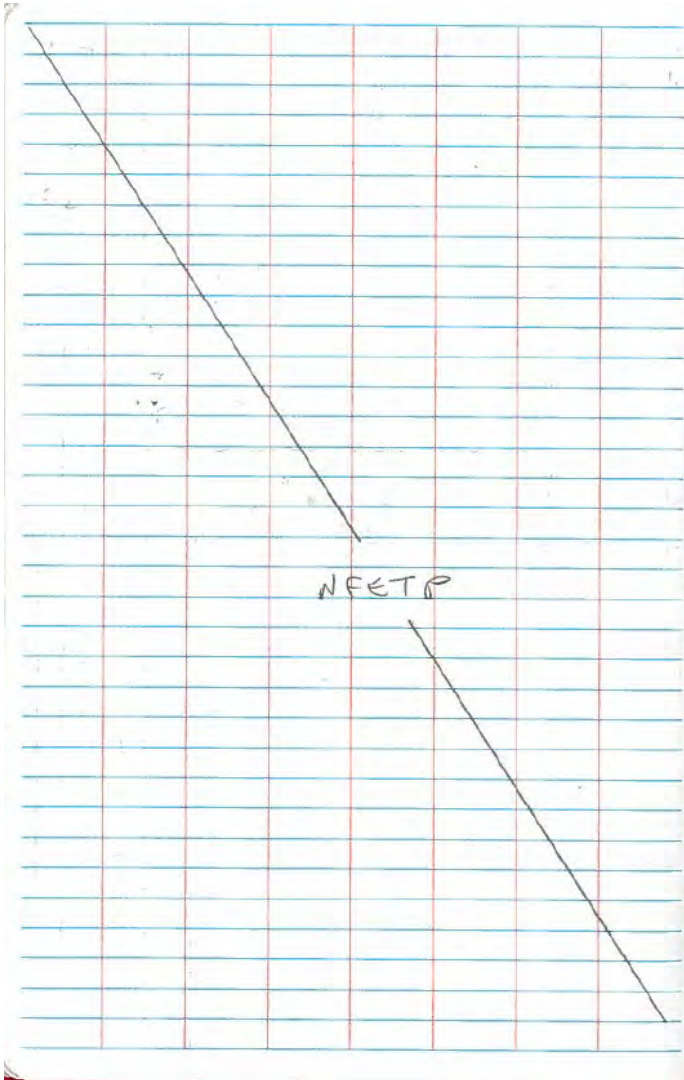
FORESIGHT (-)
 DESCRIPTIONS
 (GROUND SHOT N. OF WELL CASING & SLAB)
 MEASURING POINT @ N EDGE OF PVC OPENING
 MEASURING POINT (NORTH EDGE OF METAL CASING)
 BACK @ STARTING POINT (SITE Bm)
 Check In = -0.012'



SOUTH FLORIDA WATER MANAGEMENT DISTRICT

Rev. 1/16

Dewberry Field Notes (4 of 4)





SOUTH FLORIDA WATER MANAGEMENT DISTRICT

Rev. 1/16

Whidden Field Notes (1 of 7)

| Sta | + | HI | - | ELEV |
|-------|-------|--------|-------|-----------------------|
| G8899 | | | | |
| 5235 | | | | 4.78 |
| | 5.37 | 9.67 | | |
| TP 1 | | | 5.538 | 4.132 |
| | 5.896 | 9.638 | | |
| TP 2 | | | 5.574 | 4.055 |
| | 5.379 | 9.234 | | |
| TP 3 | | | 4.952 | 4.481 |
| | 5.666 | 10.147 | | |
| TP 4 | | | 5.671 | 4.476 |
| | 6.018 | 10.494 | | |
| TP 6 | | | 5.126 | 4.18 5.328 |
| | 5.849 | 11.198 | | |
| TP 6 | | | 5.019 | 6.179 |

| Date | Time | BM |
|-----------------------------------|---------|----|
| 10/12/09 | 7:50 AM | BM |
| ADJUSTED ELEVATION ON CROWN BOUND | | |



SOUTH FLORIDA WATER MANAGEMENT DISTRICT

Rev. 1/16

Whidden Field Notes (2 of 7)

| G2899 CONT | | | | |
|------------|-------|----------------|-------|-------|
| STA | + | H _i | - | ELEV |
| | 5.943 | 12.122 | | 6.179 |
| TP 7 | | | 5.889 | 6.232 |
| | 5.881 | 11.813 | | |
| TP 8 | | | 5.598 | 5.915 |
| | 5.780 | 11.095 | | |
| TP 9 | | | 5.659 | 6.036 |
| | 5.914 | 11.950 | | |
| TP 10 | | | 5.982 | 6.017 |
| | 6.099 | 12.117 | | |
| TP 11 | | | 6.816 | 5.807 |
| | 6.298 | 12.039 | | |
| TP 12 | | | 6.177 | 5.864 |
| | 6.232 | 12.098 | | |
| TP 13 | | | 6.969 | 6.139 |

| 10/2/19 B.C | | 12H | | W205/16 | |
|-------------------------|--|-----|--|---------|--|
| P235 Brass Disk in Conc | | | | | |



SOUTH FLORIDA WATER MANAGEMENT DISTRICT

Rev. 1/16

Whidden Field Notes (3 of 7)

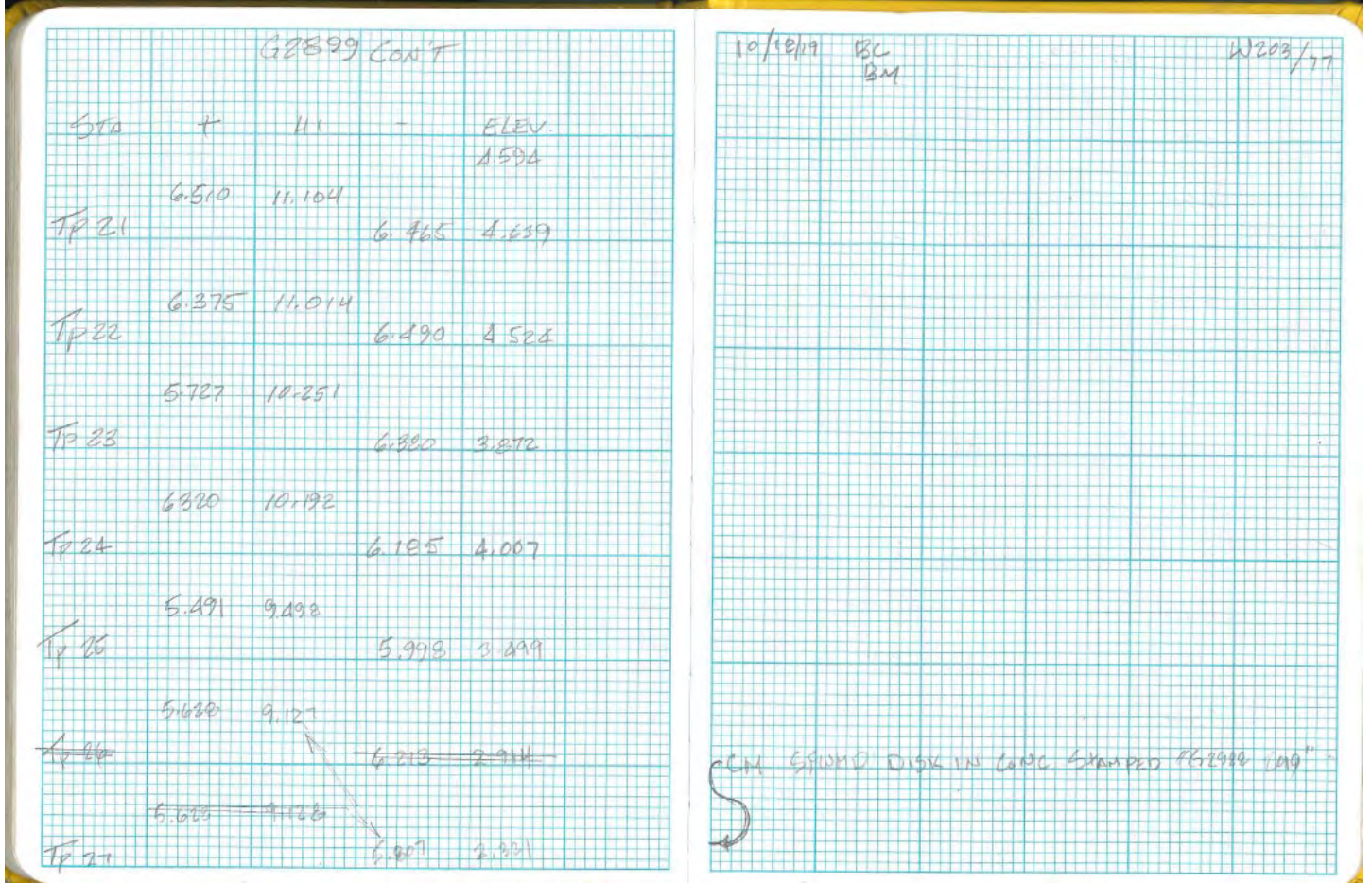
| G2899 Cont'd | | | | 10/18/19 | BSC BM | W 203/16 |
|--------------|-------|--------|-------|----------|-----------|----------|
| STA | + | W | - | ELEV. | | |
| | | | | 6.139 | | |
| | 6.240 | 12.379 | | | | |
| TP 14 | | | 5.825 | 6.553 | | |
| | 6.202 | 12.755 | | | | |
| TP 15 | | | 6.463 | 6.292 | | |
| | 6.575 | 11.867 | | | | |
| TP 16 | | | 6.427 | 5.441 | | |
| | 5.946 | 11.386 | | | | |
| TP 17 | | | 6.486 | 4.901 | | |
| | 5.860 | 10.760 | | | | |
| TP 18 | | | 6.284 | 4.476 | | |
| | 5.957 | 10.233 | | | | |
| TP 19 | | | 5.903 | 4.930 | | |
| | 6.019 | 10.350 | | | | |
| TP 20 | | | 5.756 | 4.694 | | |



SOUTH FLORIDA WATER MANAGEMENT DISTRICT

Rev. 1/16

Whidden Field Notes (4 of 7)





SOUTH FLORIDA WATER MANAGEMENT DISTRICT

Rev. 1/16

Whidden Field Notes (5 of 7)

| STA | # | WT | - | ELEV |
|-------|-------|--------|-------|-------|
| | | | | 8.321 |
| | 6.382 | 9.703 | | |
| TP 28 | | | 6.001 | 3.701 |
| | 6.226 | 8.937 | | |
| TP 29 | | | 6.626 | 3.702 |
| | 5.962 | 9.228 | | |
| TP 30 | | | 5.719 | 3.925 |
| | 5.521 | 9.266 | | |
| TP 31 | | | 5.490 | 3.971 |
| | 5.721 | 9.652 | | |
| TP 32 | | | 5.579 | 4.113 |
| | 5.954 | 10.007 | | |
| TP 33 | | | 5.568 | 4.499 |
| | 6.037 | 10.537 | | |
| TP 34 | | | 6.504 | 4.212 |

10/12/19 B.C.
B.M.

W203/79



SOUTH FLORIDA WATER MANAGEMENT DISTRICT

Rev. 1/16

Whidden Field Notes (6 of 7)

| 68899 CONT | | | | |
|------------|-------|--------|-------|-------|
| Sta | + | H | - | ELEV |
| | 6.024 | 10.536 | | 4.312 |
| TP 35 | | | 6.224 | 4.312 |
| | 5.110 | 9.123 | | |
| TP 36 | | | 4.364 | 5.058 |
| | 6.862 | 9.920 | | |
| TP 37 | | | 5.079 | 4.812 |
| | 5.150 | 9.991 | | |
| TP 38 | | | 4.173 | 5.219 |
| | 5.397 | 11.216 | | |
| TP 39 | | | 5.345 | 5.271 |
| | 6.095 | 11.966 | | |
| TP 40 | | | 5.642 | 6.355 |
| | 5.284 | 11.109 | | |
| TP 41 | | | 5.212 | 6.397 |

10/12/19 BC BM W203/80



SOUTH FLORIDA WATER MANAGEMENT DISTRICT

Rev. 1/16

Whidden Field Notes (7 of 7)

| STA | + | HI | - | ELEV |
|-------|-------|--------|-------|-------|
| | | | | 6.287 |
| | 5.654 | 11.951 | | |
| TP 42 | | | 5.591 | 6.360 |
| | 5.642 | 12.002 | | |
| TP 43 | | | 5.303 | 6.699 |
| | 4.635 | 11.374 | | |
| TP 44 | | | 6.016 | 5.319 |
| | 5.793 | 11.112 | | |
| TP 45 | | | 5.162 | 5.951 |
| | 5.160 | 11.110 | | |
| P235 | | | 5.057 | 6.004 |

10/12/19 136
1311

W 203/21