



# SOUTH FLORIDA WATER MANAGEMENT DISTRICT

Rev. 1/16

U.S.G.S. Station Name: <b>G-2903</b>	U.S.G.S. Station Number: <b>255843080090901</b>	Agency: <b>SFWMD</b>	Date of Field Work: <b>09/25/19</b>
Party Chief: <b>T. AVERY</b>	Field Book: <b>SFWMD #1</b>	Page(s): <b>45-49</b>	Report Prepared by: <b>DEWBERRY</b>

### SITE SPECIFIC DATA

Site Benchmark: <b>G-2903</b>	Benchmark Elevation(s) (NAVD88): <b>3.65 feet</b>	Corpscon 6.0.1 Conversion Factor (NAVD88 to NGVD29) <b>+ 1.60 feet</b>	
Well Reference Elevation (NAVD88): <b>3.41'</b>	Ground Elevation (NAVD88): <b>3.6'</b>	Pad Elevation (NAVD88): <b>N/A</b>	

### GEOGRAPHIC DATA

Section <b>28</b>	Township <b>51 SOUTH</b>	Range <b>42 EAST</b>
Well Latitude: <b>25°58'45.21"N</b>	Well Longitude: <b>80°09'08.17"W</b>	Location Source: <b>AVERAGED FPRN &amp; TRIMBLE VRSNOW RTK</b>
State Plane Coordinates:	Northing (Y) = <b>599043'</b>	Easting (X) = <b>934660'</b>

**Notes:** NAVD88 – North American Vertical Datum of 1988; NGVD29- National Geodetic Vertical Datum of 1929; Corpscon 6.0.1 - A U.S. Army Corps of Engineers Engineering Research and Development Center Topographic Engineering Center Alexandria, Virginia Windows-based program to convert coordinates and elevations between datum's using vertcon05.txt and vertcon05.05 files supplied by the U.S. Army Corps of Engineers South Atlantic Division, Jacksonville FL.

### PICTURES



**Not to scale (GoogleEarth product)**



# SOUTH FLORIDA WATER MANAGEMENT DISTRICT

Rev. 1/16

## Well Site and Well Head



Well: 2" PVC  
Reference Point: North Edge of top of PVC well head

Reference Point El. =  
**3.41 feet NAVD88**

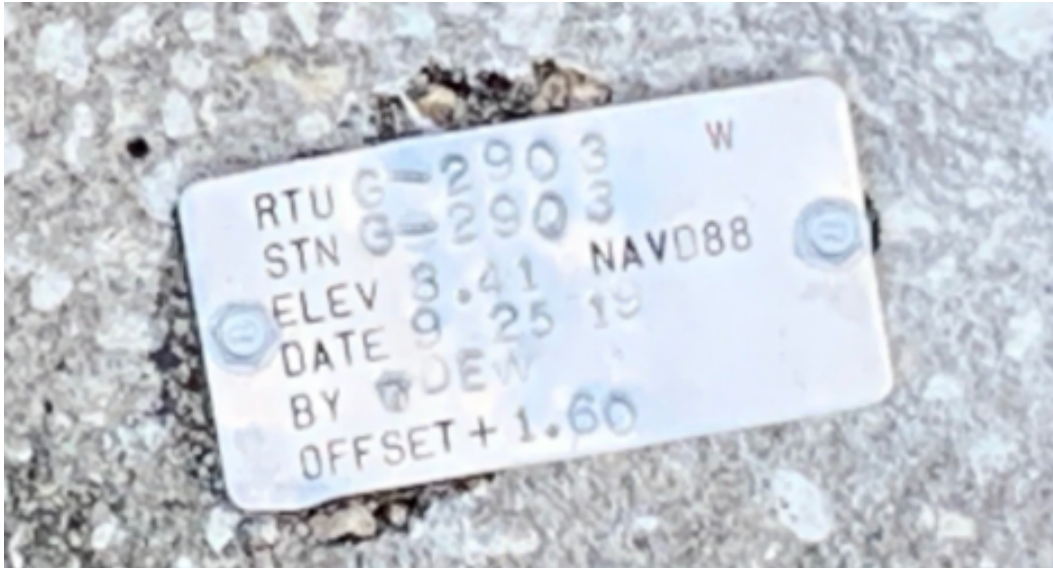
Distance to water =  
-2.30 feet from reference point  
(09/25/19 at 10:10 AM)



# SOUTH FLORIDA WATER MANAGEMENT DISTRICT

Rev. 1/16

## New Aluminum Tag





# SOUTH FLORIDA WATER MANAGEMENT DISTRICT

Rev. 1/16

## USGS RMs

**RM 2 – Nail and disc in concrete sidewalk**



Latitude: 25° 58' 45.4"  
Longitude: 80° 09' 08.1"  
NAVD88 EL = 3.60 FEET

**RM 3 – Nail and disc in concrete**



Latitude: 25° 58' 45.4"  
Longitude: 80° 09' 08.1"  
NAVD88 EL = 3.47 FEET



**RM 1 – Nail and disc in concrete curb**



Latitude: 25° 58' 45.4"  
Longitude: 80° 09' 8.2"  
NAVD88 EL = 3.53 FEET

**Well G-2903**



# SOUTH FLORIDA WATER MANAGEMENT DISTRICT

Rev. 1/16

## Site Benchmark



Site BM: G2903



Latitude: 25°58'45.8"  
Longitude: 80°09'08.2"  
NAVD88 EL = 3.65 FEET





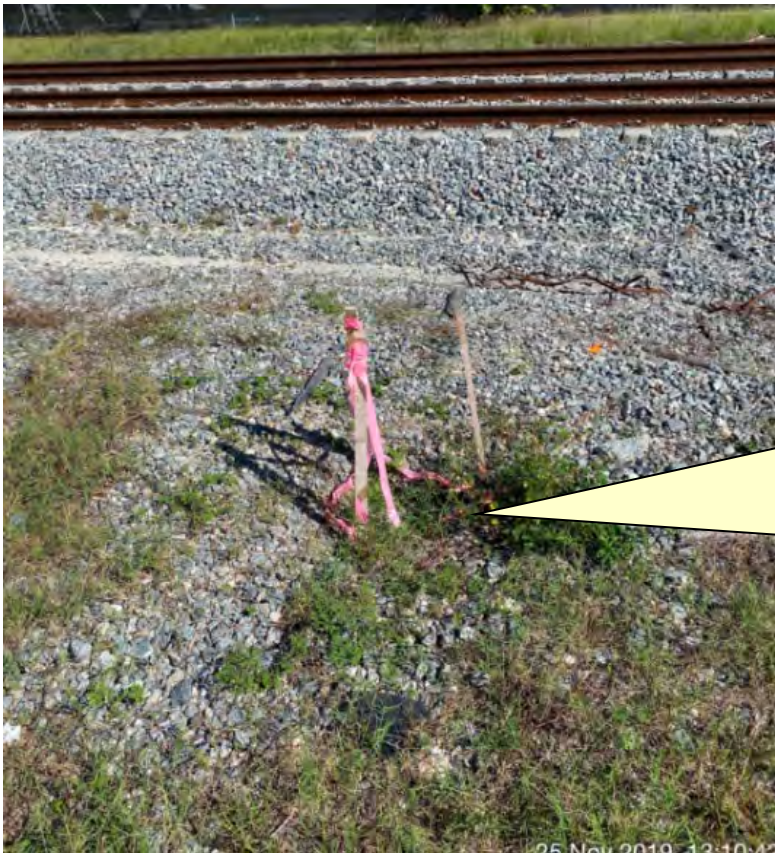
**Source Benchmarks**



**NGS Benchmark "BC 531" (AC4693)**



Latitude: **25°58'59.5"**  
Longitude: **80°08'53.5"**  
NAVD88 EL = 7.85 FEET



**NGS Benchmark "Y 238" (AC2377)**



Latitude: **25°57'52.8"**  
Longitude: **80°08'51.4"**  
NAVD88 EL = 6.98 FEET



### South Florida Water Management District Benchmark Datasheet

Designation: <b>G-2903</b>	Project Name: <b>USGS Ph 2, BROWARD</b>	Type: <b>V</b>	State Plane Zone: <b>FL East</b>
Stamping: <b>G2903 2019</b>	Field Book Name: <b>W203</b>	Field Book Page: <b>65</b>	
Established By: <b>DEWBERRY / WHIDDEN</b>	Recovered By: <b>N/A</b>	Recovery Date: <b>N/A</b>	
Surveyor: <b>WILLIAM D. DONLEY</b>	Established Date: <b>09/11/19</b>	Status: <b>New</b>	

#### GEOGRAPHIC POSITION INFORMATION

Section: <b>28</b>	Township: <b>51 SOUTH</b>	Range: <b>42 EAST</b>
County: <b>BROWARD</b>	Quadrangle: <b>NORTH MIAMI</b>	Quad Index: <b>1602</b>
NAD83 Adj. Year: <b>2011</b>	Vertical Datum: <b>NAVD1988</b>	Horizontal Datum: <b>NAD1983</b>
NAVD88 Elevation (feet): <b>3.65</b>	NGVD29 Elevation (feet): <b>5.24</b>	2022 Elevation: <b>N/A</b>
NAVD88 Class: <b>N/A</b>	NGVD29 Class: <b>N/A</b>	Other Elevation: <b>N/A</b>
NAVD88 Order: <b>3</b>	NGVD29 Order: <b>N/A</b>	Other Elevation Type: <b>N/A</b>

CORPSCON 6.0.1 CONVERSION FACTOR (NAVD88 TO NGVD29): (A U.S. Army Corps of Engineers Engineering Research and Development Center Topographic Engineering Center Alexandria, Virginia Windows-based program to convert coordinates and elevations between datum's using vertcon05.txt and vertcon05.05 files supplied by the U.S. Army Corps of Engineers South Atlantic Division, Jacksonville FL.)

Vertical Datum Offset: + <b>1.59</b>	Actual NGS Elevation or ngvd29.txt file: <b>N/A</b>	OPUS Ortho Height: <b>N/A</b>
Northing (Y) (feet): <b>599100.3</b>	Easting (X) (feet): <b>934656.7</b>	Source of Latitude & Longitude: <b>AVERAGED FPRN &amp; TRIMBLE VRSNOW RTK</b>
Latitude: <b>25</b> DD°	<b>58</b> MM'	<b>45.78</b> SS"
Longitude: <b>80</b> DD°	<b>9</b> MM'	<b>8.19</b> SS"

Latitude (Decimal Degrees): **25.979383** Longitude (Decimal Degrees): **-80.152275**

#### RECOVERY DATA

- How to Reach:
1. HEAD SOUTH ON DIXIE HIGHWAY FROM HALLANDALE BEACH BLVD FOR 0.4 MILES
  2. TURN RIGHT ONTO SW 5TH STREET, CONTINUE 0.25 MILES
  3. TURN LEFT ONTO SW 4TH AVENUE
  4. TRAVEL SOUTH FOR 160 FEET TO THE MARK ON THE LEFT

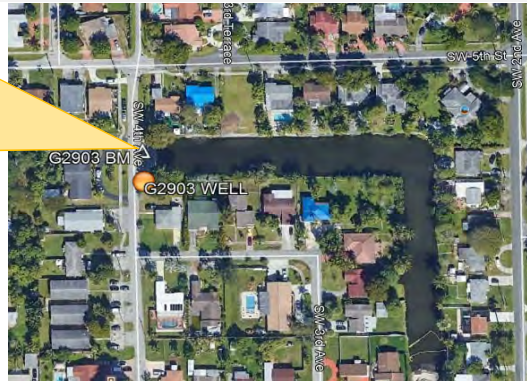
Description/Notes: **2" ALUMINUM SFWMD DISK SET IN THE CONCRETE SLAB OF A LIFT STATION, NEAR THE NW CORNER.**

Notable Landmarks: **WASTE WATER LIFT STATION 12**

Other Source Benchmarks: **N/A**

#### PICTURES

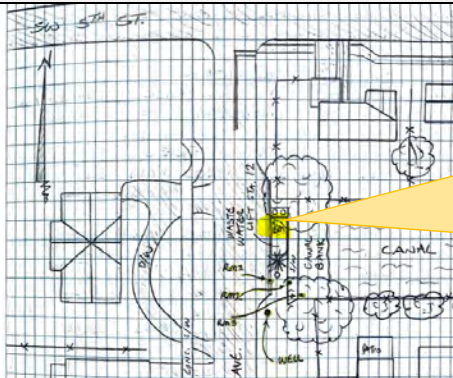
Aerial View of Overall Site



NOT TO SCALE. AERIAL FROM GOOGLE EARTH.

#### PICTURES

Site Sketch





"BC 531" Benchmark Datasheet (1 of 2)

The NGS Data Sheet

See file [dsdata.pdf](#) for more information about the datasheet.

PROGRAM = datasheet95, VERSION = 8.12.5.3

1 National Geodetic Survey, Retrieval Date = JUNE 17, 2019

AC4693 \*\*\*\*\*
AC4693 DESIGNATION - BC 531
AC4693 PID - AC4693
AC4693 STATE/COUNTY- FL/BROWARD
AC4693 COUNTRY - US
AC4693 USGS QUAD - NORTH MIAMI (1988)

AC4693 \*CURRENT SURVEY CONTROL

AC4693\* NAD 83(1986) POSITION- 25 58 59.52 (N) 080 08 53.47 (W) HD HELD1
AC4693\* NAVD 88 ORTHO HEIGHT - 2.394 (meters) 7.85 (feet) ADJUSTED
AC4693 GEOID HEIGHT - -25.600 (meters) GEOID12B
AC4693 DYNAMIC HEIGHT - 2.390 (meters) 7.84 (feet) COMP
AC4693 MODELED GRAVITY - 979,050.8 (mgal) NAVD 88

AC4693 VERT ORDER - FIRST CLASS II

AC4693.The horizontal coordinates were determined by differentially corrected
AC4693.hand held GPS observations or other comparable positioning techniques
AC4693.and have an estimated accuracy of +/- 3 meters.

AC4693.The orthometric height was determined by differential leveling and
AC4693.adjusted by the NATIONAL GEODETIC SURVEY
AC4693.in May 1994.

AC4693.Significant digits in the geoid height do not necessarily reflect accuracy.
AC4693.GEOID12B height accuracy estimate available [here](#).

AC4693. [Photographs](#) are available for this station.

AC4693.The dynamic height is computed by dividing the NAVD 88
AC4693.geopotential number by the normal gravity value computed on the
AC4693.Geodetic Reference System of 1980 (GRS 80) ellipsoid at 45
AC4693.degrees latitude (g = 980.6199 gals.).

AC4693.The modeled gravity was interpolated from observed gravity values.

AC4693; North East Units Estimated Accuracy
AC4693;SPC FL E - 183,031.5 285,290.7 MT (+/- 3 meters HH1 GPS)

AC4693\_U.S. NATIONAL GRID SPATIAL ADDRESS: 17RNJ8526174101(NAD 83)

AC4693 SUPERSEDED SURVEY CONTROL

AC4693 NGVD 29 (09/01/92) 2.880 (m) 9.45 (f) ADJUSTED 1 2

AC4693.Superseded values are not recommended for survey control.

AC4693.NGS no longer adjusts projects to the NAD 27 or NGVD 29 datums.
AC4693.See file [dsdata.pdf](#) to determine how the superseded data were derived.

AC4693





# SOUTH FLORIDA WATER MANAGEMENT DISTRICT

Rev. 1/16

## "BC 531" Benchmark Datasheet (2 of 2)

AC4693\_MARKER: DD = SURVEY DISK  
 AC4693\_SETTING: 7 = SET IN TOP OF CONCRETE MONUMENT  
 AC4693\_STAMPING: BC 531  
 AC4693\_MARK LOGO: FL-011  
 AC4693\_PROJECTION: RECESSED 61 CENTIMETERS  
 AC4693\_MAGNETIC: N = NO MAGNETIC MATERIAL  
 AC4693\_STABILITY: C = MAY HOLD, BUT OF TYPE COMMONLY SUBJECT TO  
 AC4693+STABILITY: SURFACE MOTION  
 AC4693\_SATELLITE: THE SITE LOCATION WAS REPORTED AS NOT SUITABLE FOR  
 AC4693+SATELLITE: SATELLITE OBSERVATIONS - February 01, 2017

AC4693	HISTORY	- Date	Condition	Report By
AC4693	HISTORY	- 1987	MONUMENTED	FL-011
AC4693	HISTORY	- 19901228	GOOD	NGS
AC4693	HISTORY	- 20170201	GOOD	USACE

AC4693  
 AC4693 STATION DESCRIPTION  
 AC4693

AC4693'DESCRIBED BY NATIONAL GEODETIC SURVEY 1990  
 AC4693' IN HALLANDALE, AT THE INTERSECTION OF DIXIE HIGHWAY AND SOUTHWEST 2ND  
 AC4693'STREET, 13.6 M (44.6 FT) EAST OF AND LEVEL WITH THE HIGHWAY CENTER,  
 AC4693'7.4 M (24.3 FT) WEST OF THE NEAR RAIL OF THE FLORIDA EAST COAST  
 AC4693'RAILROAD, 4.8 M (15.7 FT) SOUTHEAST OF AN UNDERGROUND CABLE WARNING  
 AC4693'MARKER, 4.7 M (15.4 FT) SOUTH OF A CONCRETE RAILROAD RIGHT-OF-WAY  
 AC4693'MARKER, 0.3 M (1.0 FT) NORTH OF A WITNESS POST, ON THE EXTENDED  
 AC4693'CENTERLINE OF THE STREET, AND THE MONUMENT IS 0.1 M (0.3 FT) BELOW  
 AC4693'THE GROUND SURFACE.

AC4693  
 AC4693 STATION RECOVERY (2017)  
 AC4693

AC4693'RECOVERY NOTE BY US ARMY CORPS OF ENGINEERS 2017 (JLN)  
 AC4693'A SECOND SET OF RAILROAD TRACKS HAVE BEEN ADDED WEST OF THOSE  
 AC4693'DESCRIBED IN THE ORIGINAL DESCRIPTION. MONUMENT RECOVERED UNDER ABOUT  
 AC4693'2 FT (0.6 M) OF RAILROAD BALLAST.

\*\*\* retrieval complete.  
 Elapsed Time = 00:00:03



# SOUTH FLORIDA WATER MANAGEMENT DISTRICT

Rev. 1/16

## "Y 238" Benchmark Datasheet (1 of 4)

### The NGS Data Sheet

See file [dsdata.pdf](#) for more information about the datasheet.

```

PROGRAM = datasheet95, VERSION = 8.12.5.4
1      National Geodetic Survey,  Retrieval Date = NOVEMBER 26, 2019
AC2377 *****
AC2377 DESIGNATION - Y 238
AC2377 PID - AC2377
AC2377 STATE/COUNTY- FL/MIAMI-DADE
AC2377 COUNTRY - US
AC2377 USGS QUAD - NORTH MIAMI (1988)
AC2377
AC2377 *CURRENT SURVEY CONTROL
AC2377
AC2377* NAD 83(2011) POSITION- 25 57 52.79580(N) 080 08 51.35709(W) ADJUSTED
AC2377* NAD 83(2011) ELLIP HT- -23.469 (meters) (06/27/12) ADJUSTED
AC2377* NAD 83(2011) EPOCH - 2010.00
AC2377* NAVD 88 ORTHO HEIGHT - 2.126 (meters) 6.98 (feet) ADJUSTED
AC2377
AC2377 GEOID HEIGHT - -25.602 (meters) GEOID18
AC2377 NAD 83(2011) X - 981,835.707 (meters) COMP
AC2377 NAD 83(2011) Y - -5,653,391.075 (meters) COMP
AC2377 NAD 83(2011) Z - 2,775,532.697 (meters) COMP
AC2377 LAPLACE CORR - -3.97 (seconds) DEFLEC18
AC2377 DYNAMIC HEIGHT - 2.123 (meters) 6.97 (feet) COMP
AC2377 MODELED GRAVITY - 979,049.7 (mgal) NAVD 88
AC2377
AC2377 VERT ORDER - FIRST CLASS I
AC2377
AC2377 Network accuracy estimates per FGDC Geospatial Positioning Accuracy
AC2377 Standards:
AC2377 FGDC (95% conf, cm) Standard deviation (cm) CorrNE
AC2377 Horiz Ellip SD_N SD_E SD_h (unitless)
AC2377 -----
AC2377 NETWORK 1.65 2.65 0.67 0.68 1.35 -0.06666638
AC2377 -----
AC2377 Click here for local accuracies and other accuracy information.
AC2377
AC2377
AC2377 The horizontal coordinates were established by GPS observations
AC2377 and adjusted by the National Geodetic Survey in June 2012.
AC2377
AC2377 NAD 83(2011) refers to NAD 83 coordinates where the reference frame has
AC2377 been affixed to the stable North American tectonic plate. See
AC2377 NA2011 for more information.
AC2377
AC2377 The horizontal coordinates are valid at the epoch date displayed above
AC2377 which is a decimal equivalence of Year/Month/Day.
AC2377
AC2377 The orthometric height was determined by differential leveling and
AC2377 adjusted by the NATIONAL GEODETIC SURVEY
AC2377 in June 1991.
AC2377
AC2377 Significant digits in the geoid height do not necessarily reflect accuracy.

```







# SOUTH FLORIDA WATER MANAGEMENT DISTRICT

Rev. 1/16

## "Y 238" Benchmark Datasheet (4 of 4)

AC2377'RECOVERY NOTE BY FLORIDA DEPARTMENT OF TRANSPORTATION 2011 (PED)  
AC2377'RECOVERED IN GOOD CONDITION.  
AC2377  
AC2377 STATION RECOVERY (2012)  
AC2377  
AC2377'RECOVERY NOTE BY AMEC EARTH & ENVIRONMENTAL 2012 (RLE)  
AC2377'RECOVERED IN GOOD CONDITION.  
AC2377  
AC2377 STATION RECOVERY (2014)  
AC2377  
AC2377'RECOVERY NOTE BY GEOCACHING 2014 (KEN)  
AC2377'THE MARK IS 60.8 FT (18.5 M) NORTHWEST OF MM 352 AND 18.8 FT (5.7 M)  
AC2377'WEST OF THE WESTERN RAIL.  
AC2377  
AC2377 STATION RECOVERY (2018)  
AC2377  
AC2377'RECOVERY NOTE BY INDIVIDUAL CONTRIBUTORS 2018 (CAN)  
AC2377'THE MILE MARKER HAS MOVED SINCE LAST RECOVERY. THE MARK IS DIRECTLY  
AC2377'ACROSS THE STREET FROM THE STOP SIGN LOCATED ON THE CORNER OF DIXIE  
AC2377'HIGHWAY AND NORTHEAST 204TH. IT IS BURIED SEVERAL FEET BELOW A LAYER  
AC2377'OF ROCKS ON THE RAILROAD RIGHT-OF-WAY.

\*\*\* retrieval complete.  
Elapsed Time = 00:00:02





# SOUTH FLORIDA WATER MANAGEMENT DISTRICT

Rev. 1/16

## Dewberry Field Notes (2 of 4)

Tolson S.F.W.M.D. 09/25/19  
 AT-GE USGS WELLS & BMS  
 S/N: 1439 Job #: 5009 9999  
 WELL SITE: G-2903

TASK: ELEVATE MONITORING POINT, REFERENCE  
 MONUMENTATION, & GROUND @ WELL SITE.

ELEVATION	DESCRIPTION
BEGIN @ <del>4.00</del> 3.65	ALUMINUM DISC, LOCATED L.S. (WHIPPEN) (NAVD83) LEFT STATION # 12, STAMPED

STA ID	RD = MEAN	ELEV.	RD = MEAN	ELEV.	ELEV.
--------	-----------	-------	-----------	-------	-------

	5.03			4.99	
B/M	4.88	4.88	<del>4.88</del>	4.815	4.8167 <del>4.8167</del> 3.7133
	4.68		8.53	4.645	
	40'/40'			34.5'/74.5'	
"	"	"	"	4.96	
"	"	"	"	4.76	4.76 <del>4.76</del> 3.7700
				4.56	
				40'/80'	
"	"	"	"	5.05	
"	"	"	"	4.82	4.8183 <del>4.8183</del> 3.7117
				4.585	
				46.5'/86.5'	
"	"	"	"	5.205	
"	"	"	"	4.97	4.97 <del>4.97</del> 3.5600
				4.735	

N: T. AVERY  
 X: J. HUFF  
 P: GAG

TOP OF CURB IN FRONT OF WASTE WATER  
 "S.F.W.M.D. SURVEY MARKER G2903 2019"

FORE SIGHT (-)  
 DESCRIPTION

RM1 - REC. NAIL & DISC, STAMPED "USGS RM1"  
 LOCATED IN TOP OF CURB, ON EASTERLY  
 R/W OF SW 9TH AVE., S. OF WASTE WATER  
 LEFT STATION # 12

RM2 - REC. NAIL & DISC STAMPED "USGS RM2"  
 LOCATED IN SIDEWALK ON EASTERLY R/W  
 OF SW 9TH AVE., S. OF WASTE WATER  
 LEFT STATION # 12

RM3 - REC. NAIL & DISC STAMPED "LB 209B"  
 LOCATED IN CONC. CANAL BANK, ON EASTERLY  
 R/W OF SW 9TH AVE., S. OF WASTE WATER  
 LEFT STATION # 12

MIN CURB OF CONC. SLAB AROUND WELL CASING  
 (22" x 22")



# SOUTH FLORIDA WATER MANAGEMENT DISTRICT

Rev. 1/16

## Dewberry Field Notes (3 of 4)

Tolson S.F.W.M.D. 9/25/19  
 AT-G-2 USGS WEELS E BMS  
 S/N: 1439 JOB #F: 5009 9949  
 WELL SITE: G-2903

TASK: CONTINUE ELEVATING POINTS OF INTEREST

BACKSIGHT (+)		I	FORESIGHT (-)		ADJ
STA ID	RD: MEAN ELEV		RD: MEAN ELEV	ELEV	
			5.205		
B07	<del>704/88</del> 8.53		4.965	4.9650	99.915 3.5650
"	"		4.725		48'/88'
"	"		5.24		
"	"		4.99	4.99	99.89 3.5400
"	"		4.74		50'/90'
"	"		5.21		
"	"		4.97	4.97	99.91 3.5600
"	"		4.73		48'/88'
"	"		5.165		
"	"		4.93	4.93	99.95 3.6000
"	"		4.695		41'/81'
"	"		5.36		
"	"		5.12	5.1183	99.766 3.4117
"	"		4.875		48.5'/88.5'

N: T. ALLEY  
 K: J. HUFF

FORESIGHT (-)  
 DESCRIPTION

NE CORNER OF CONC SLAB AROUND WELL CASING

SE CORNER OF CONC SLAB AROUND WELL CASING

SW CORNER OF CONC SLAB AROUND WELL CASING

GROUND SURF NORTH OF CONC SLAB AROUND WELL CASING

MEASURING POINT (NORTH EDGE OF PVC WELL HEAD)





# SOUTH FLORIDA WATER MANAGEMENT DISTRICT

Rev. 1/16

## Dewberry Field Notes (4 of 4)

Tefcon S.F.W.M.D. 9/25/19  
 AT-GP USGS WELLS & Bms  
 s/n: 1439 Job #: 5000 9999  
 Well Site: G-2203

TASK: CONTINUE ELEVATING POINTS OF INTEREST

BACKSIGHT (+)		FORESIGHT (-)		ADJ
STA ID	RDs	MEAN ELEV	RDs	MEAN ELEV. ELEV.
			5.045	
EM		<del>704.80</del> 8.53	5.005	5.005 99.875 3.525
			4.765	
			48' / 88'	
* BREAK - SET-UP				
	5.565		5.40	
	5.325	5.325 705.20	5.20	5.1983 100.000 3.657
	5.085	8.850	4.995	
			40.5' / 126.5'	
* END LEVEL LOOP				

NOTE: THERE WAS NO LOCK FOUND ON WELL, AS HAD BEEN PREVIOUSLY INDICATED.

N: T. AVERY  
 A: J. HUFF

FORESIGHT (-)  
DESCRIPTION

NORTH EDGE OF METAL CASING

BASIC STARTING POINT (SITE BM)

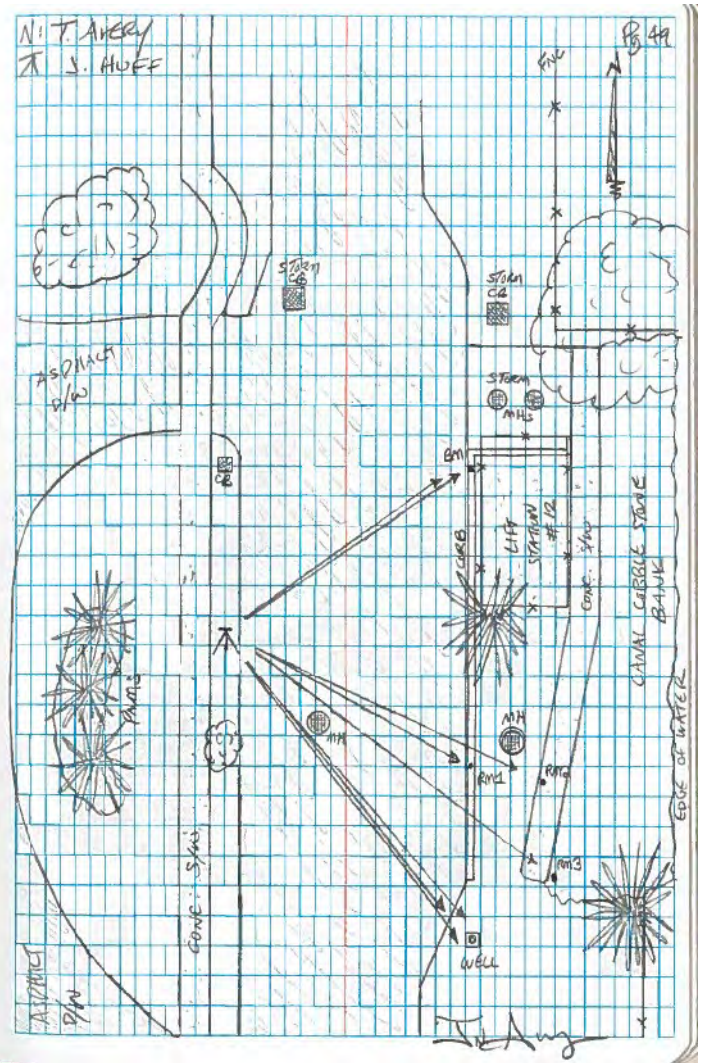
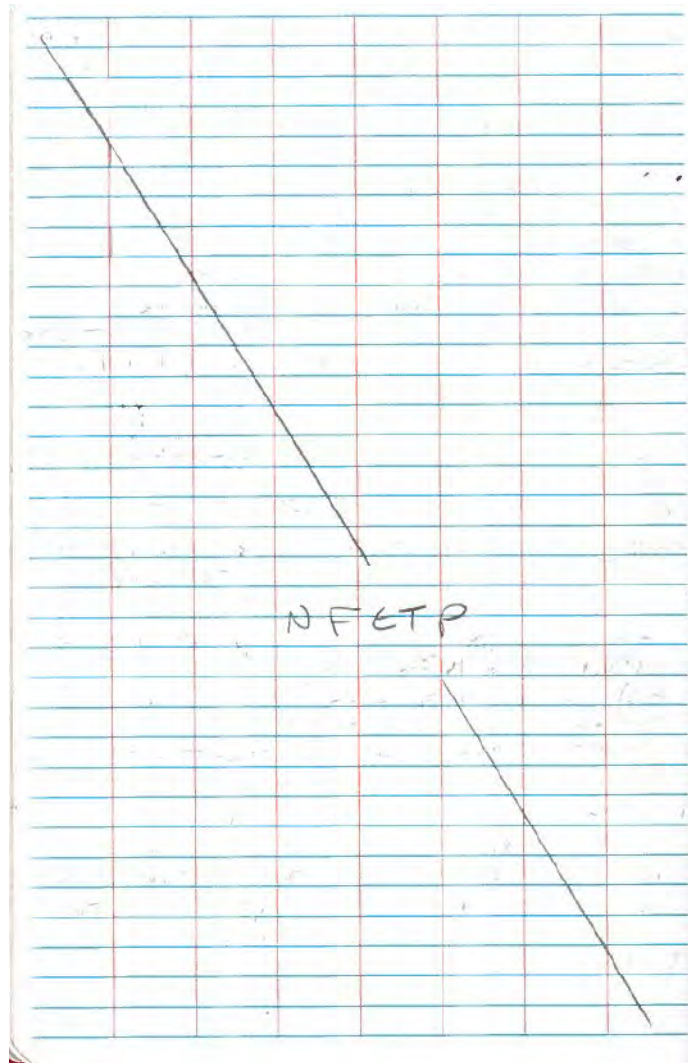
Check In: 0.0017'



# SOUTH FLORIDA WATER MANAGEMENT DISTRICT

Rev. 1/16

## Dewberry Field Notes (4 of 4)





# SOUTH FLORIDA WATER MANAGEMENT DISTRICT

Rev. 1/16

## Whidden Field Notes (1 of 3)

62903				
STA	BS	HI	FS	EL
62903				7.85
	6.30	14.15		
TP 1			4.35	4.70
	8.18	12.98		
TP 2			4.27	6.70
	4.22	13.02		
TP 3			4.67	8.40
	4.88	16.39		
TP 4			5.15	7.33
	8.23	14.57		
TP 5			7.24	3.33
	4.96	8.29		
TP 6			4.56	8.93
	5.18	9.11		

09/11/17 Dini: S/N 785642 Trumble: 521348522 GPS002 Trumble: 0220266504 RG-4				
STA	BS	HI	FS	EL
TP 1	62903			5.436
				3.605
				5.868
				9.133
				5.465
				5.730
TP 4				-1.327
				3.233
				6.431
				0.169
TP 10				4.191
				7.528
				4.228
				17.467
TP 11				0.649
				8.177
				5.565
				13.743
TP 12				-0.825
				7.872
				5.819
				13.690
TP 8				0.673
				3.565

\$1.176



# SOUTH FLORIDA WATER MANAGEMENT DISTRICT

Rev. 1/16

## Whidden Field Notes (2 of 3)

STA	Y	H		72
	6.424	11.984		
74.14			0.733	9.248
	11.725	11.625		
SCSS			-1.426	7.162
				1.01
TRK BASE	Q	4238	cm/d	"4238" (2.25m)
BRICK	Q	42905	cm/d	"42905" (2m)
		V. 0.126		
BRICK	Q	4655	cm/d	"4655" (2m)
		V. 0.07		

01203/66

A. D. 1234



# SOUTH FLORIDA WATER MANAGEMENT DISTRICT

Rev. 1/16

## Whidden Field Notes (3 of 3)

62903-112819

RJK BASE @ 4238 cm/a "4238" (2m)

BC531 CR @ BC531 cm/a "BC531" (2m)

V.C.O.11

11/26/19 DW  
NB  
BM

W312/cg