



MW - 1

COMPANY : DIVERSIFIED DRILLING  
 WELL : MW - 1  
 LOCATION/FIELD : POMPANO BEACH/WIP 2A  
 COUNTY : BROWARD  
 STATE : FLORIDA  
 SECTION :

OTHER SERVICES:  
 GAMMA  
 LSM ELEC

TOWNSHIP : RANGE :

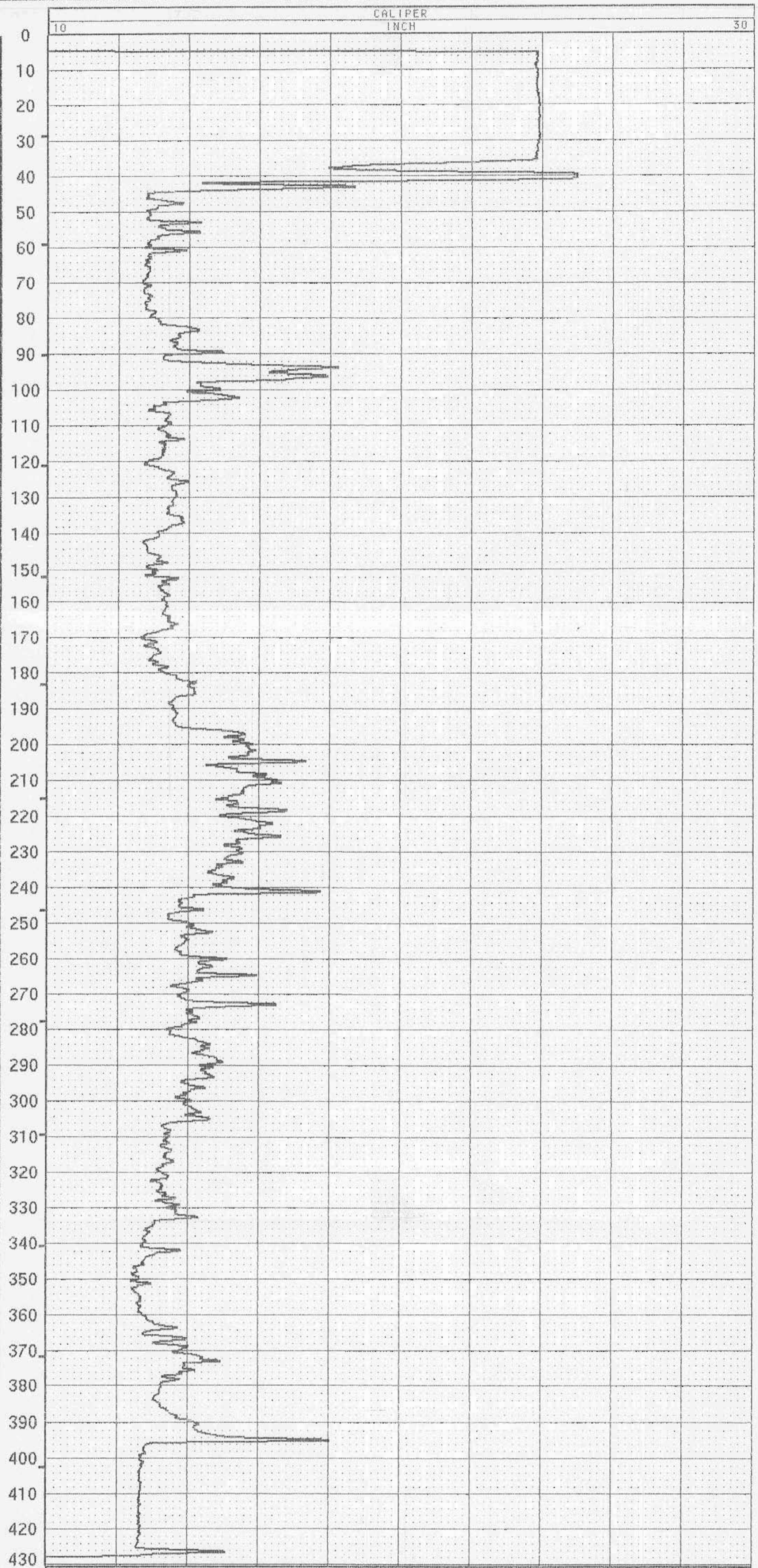
DATE : 08/21/96 PERMANENT DATUM : PL ELEVATIONS  
 DEPTH DRILLER : 430 ELEV. PERM. DATUM: N/A KB : N/A  
 LOG BOTTOM : 430.40 LOG MEASURED FROM: PL DF : 7.33 FT  
 LOG TOP : 0.20 DRL MEASURED FROM: PL GL : N/A

CASING DRILLER : LOGGING UNIT : 1  
 CASING TYPE : STEEL FIELD OFFICE : DEB  
 CASING THICKNESS: .5 RECORDED BY : N. SCHILLING

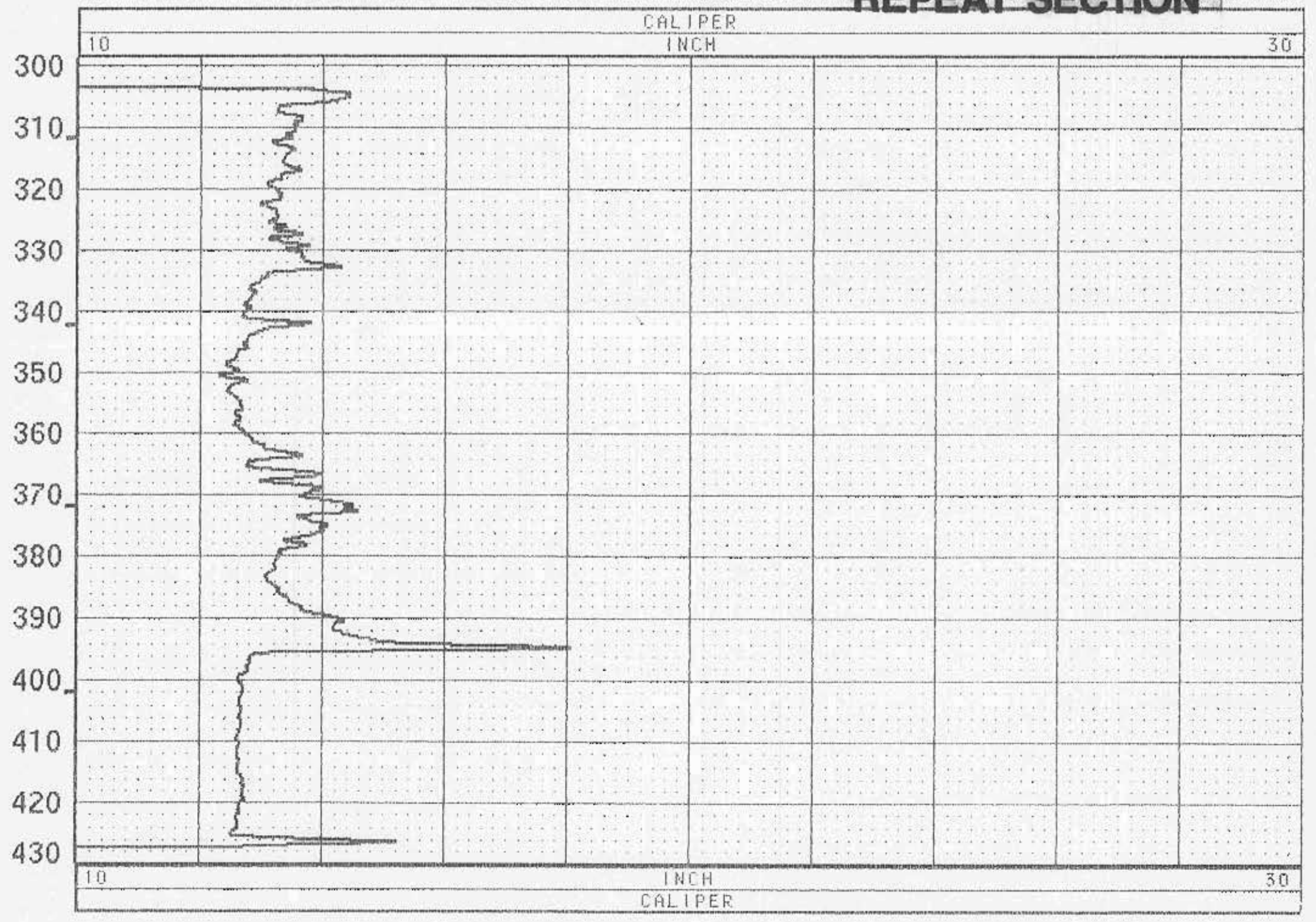
BIT SIZE : 12.25 BOREHOLE FLUID : MUD FILE : ORIGINAL  
 MAGNETIC DECL. : RM TYPE : CCAL1  
 MATRIX DENSITY : RM TEMPERATURE : LOG : 4  
 FLUID DENSITY : MATRIX DELTA T : PLOT : MARK 2  
 NEUTRON MATRIX : FLUID DELTA T : THRESH: 2500

REMARKS :  
 OBSERVER: BOB SCHMIDT - DIVERSIFIED DRILLING  
 LOGGED UNDER STATIC CONDITIONS ON PILOT HOLE

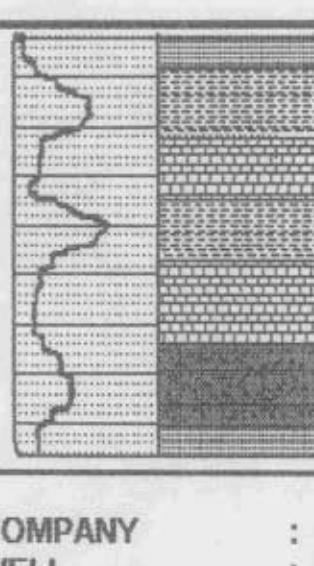
ALL SERVICES PROVIDED SUBJECT TO STANDARD TERMS AND CONDITIONS



REPEAT SECTION







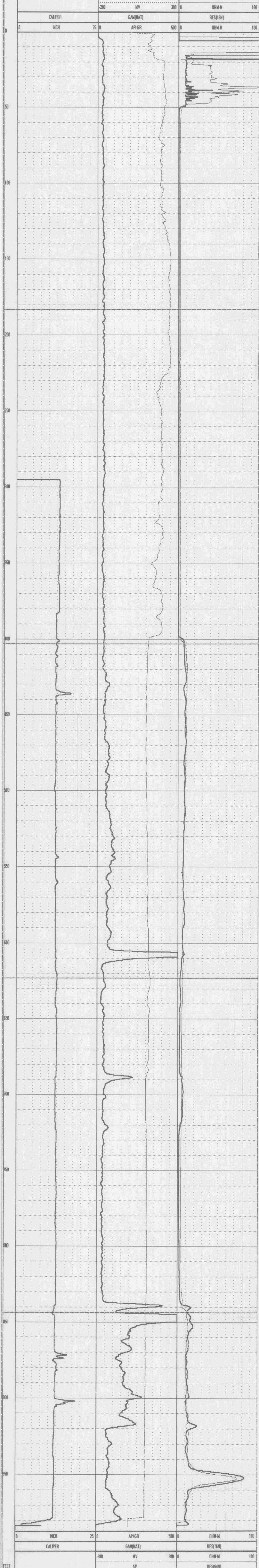
# Southern Resource Exploration

## ASR MONITOR WELL

P.O. Box 14311  
Gainesville, Florida 32604  
Phone 352-3723950

COMPANY : DIVERSIFIED DRILLING WELL : ASR MONITOR WELL LOCATION/FIELD : DEERFIELD COUNTY : BROWARD STATE : FL SECTION :	TOWNSHIP : RANGE : DATE : 08/29/96 DEPTH DRILLER : 1015' LOG BOTTOM : 984.60 LOG TOP : 0.80 CASING DRILLER : 430 CASING TYPE : STEEL CASING THICKNESS: .375 BIT SIZE : 12.25 MAGNETIC DECL. : MATRIX DENSITY : FLUID DENSITY : 1 NEUTRON MATRIX : REMARKS:	OTHER SERVICES: PERMANENT DATUM : GL ELEV. PERM. DATUM : LOG MEASURED FROM: GL DRL MEASURED FROM: GL LOGGING UNIT : BWT FIELD OFFICE : GVL RECORDED BY : M.FRIED BOREHOLE FLUID : MUD RM : RM TEMPERATURE : MATRIX DELTA T : 50 FLUID DELTA T : 189	ELEVATIONS: KB : DF : GL : FILE : ORIGINAL TYPE : 9041A LOG : 5. PLOT : THRESH: 5000
--	--	---	--

ALL SERVICES PROVIDED SUBJECT TO STANDARD TERMS AND CONDITIONS



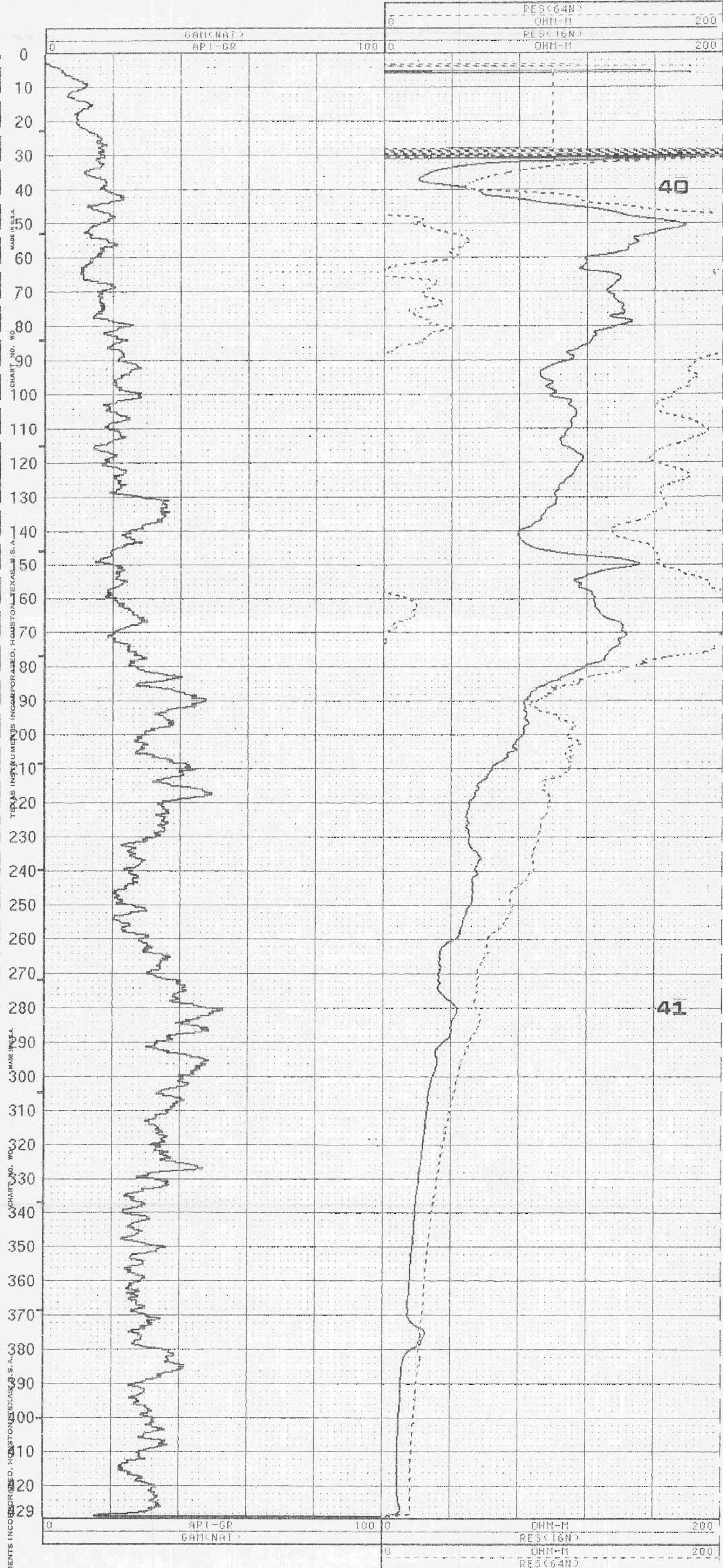




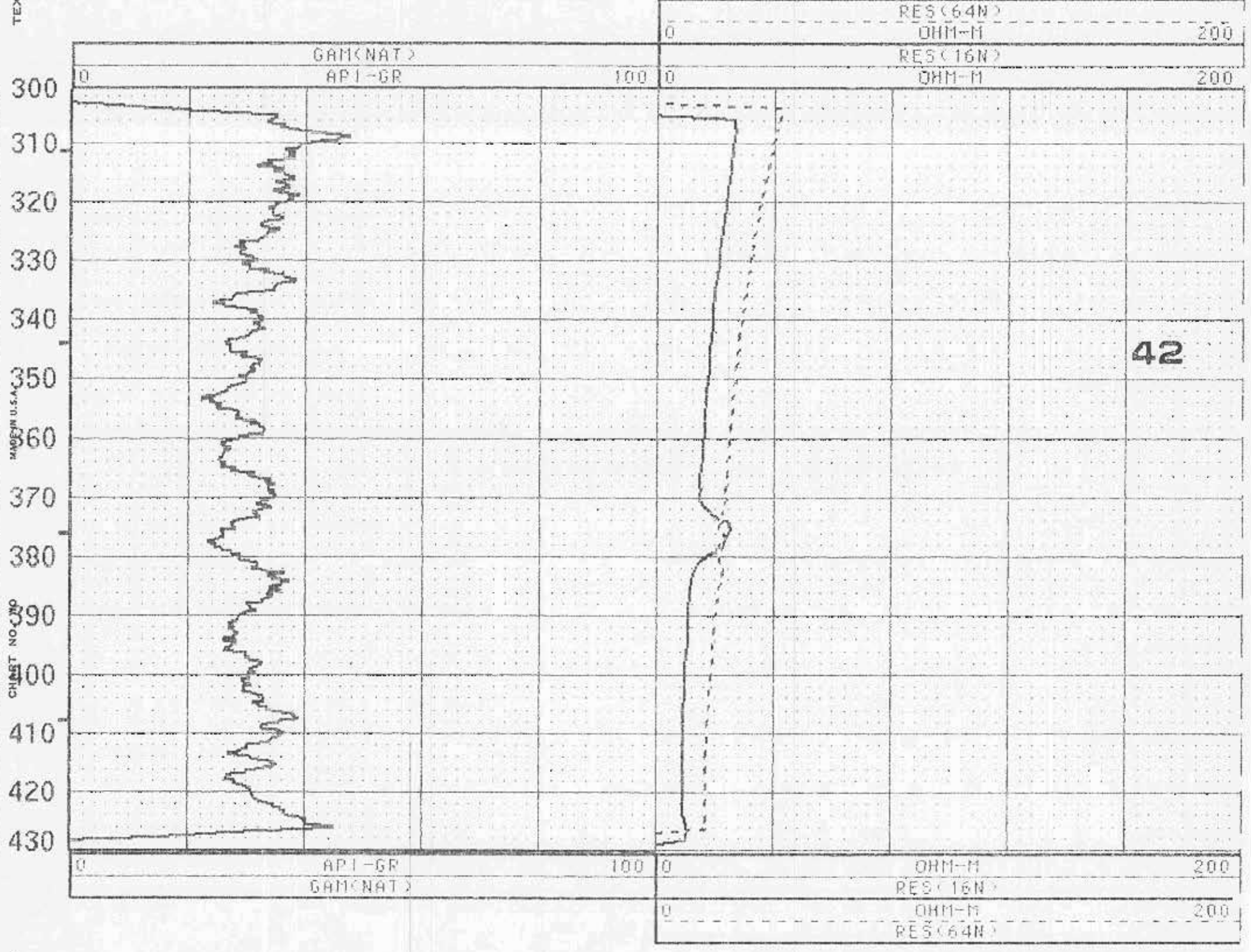
**GAMMA RAY  
LSN ELECTRIC**

**MW - 1**

COMPANY : DIVERSIFIED DRILLING	OTHER SERVICES : CALIPER	
WELL : MW - 1		
LOCATION/FIELD : POMPANO BEACH/HIP 2A		
COUNTY : BROWARD		
STATE : FLORIDA	TOWNSHIP :	RANGE :
SECTION :		
DATE : 08/21/96	PERMANENT DATUM : PL	ELEVATIONS
DEPTH DRILLER : 430	ELEV. PERM. DATUM: N/A	KB : N/A
LOG BOTTOM : 429.30	LOG MEASURED FROM: PL	DF : 7.33 FT
LOG TOP : 0.60	DRL MEASURED FROM: PL	GL : N/A
CASING DRILLER : 38	LOGGING UNIT : 1	
CASING TYPE : STEEL	FIELD OFFICE : DFB	
CASING THICKNESS : .5	RECORDED BY : M. SCHILLING	
BIT SIZE : 12.25	BOREHOLE FLUID : MUD	FILE : ORIGINAL
MAGNETIC DECL. :	RM : :	TYPE : 9041A
MATRIX DENSITY :	RM TEMPERATURE :	LOG : 2
FLUID DENSITY :	MATRIX DELTA T :	PLOT : MARK 28
NEUTRON MATRIX :	FLUID DELTA T :	THRESH: 2500
REMARKS :		
OBSERVER: BOB SCHMIDT - DIVERSIFIED DRILLING		
LOGGED UNDER STATIC CONDITIONS ON PILOT HOLE		
ALL SERVICES PROVIDED SUBJECT TO STANDARD TERMS AND CONDITIONS		



**REPEAT SECTION**





GEOPHEX LTD.

NORMAL RESISTIVITY  
SPONTANEOUS POTENTIAL

TAMPA, FL

COMPANY DIVERSIFIED DRILLING

WELL MW-1

FIELD N/A

COUNTY BROWARD

LOCATION HTP 2A/ POMPANO BEACH

STATE FL

Other Services:  
FLUID RES. TEMP.  
FLUID  
CALIPER/CNHHA

Sec. N/A

Other Services:  
FLUID RES. TEMP.  
FLUID  
CALIPER/CNHHA

Other Services:  
FLUID RES. TEMP.  
FLUID  
CALIPER/CNHHA

Other Services:  
FLUID RES. TEMP.  
FLUID  
CALIPER/CNHHA

Other Services:  
FLUID RES. TEMP.  
FLUID  
CALIPER/CNHHA

Other Services:  
FLUID RES. TEMP.  
FLUID  
CALIPER/CNHHA

Other Services:  
FLUID RES. TEMP.  
FLUID  
CALIPER/CNHHA

Other Services:  
FLUID RES. TEMP.  
FLUID  
CALIPER/CNHHA

Other Services:  
FLUID RES. TEMP.  
FLUID  
CALIPER/CNHHA

Other Services:  
FLUID RES. TEMP.  
FLUID  
CALIPER/CNHHA

Other Services:  
FLUID RES. TEMP.  
FLUID  
CALIPER/CNHHA

Other Services:  
FLUID RES. TEMP.  
FLUID  
CALIPER/CNHHA

Other Services:  
FLUID RES. TEMP.  
FLUID  
CALIPER/CNHHA

Other Services:  
FLUID RES. TEMP.  
FLUID  
CALIPER/CNHHA

Other Services:  
FLUID RES. TEMP.  
FLUID  
CALIPER/CNHHA

Other Services:  
FLUID RES. TEMP.  
FLUID  
CALIPER/CNHHA

Other Services:  
FLUID RES. TEMP.  
FLUID  
CALIPER/CNHHA

Other Services:  
FLUID RES. TEMP.  
FLUID  
CALIPER/CNHHA

Other Services:  
FLUID RES. TEMP.  
FLUID  
CALIPER/CNHHA

Other Services:  
FLUID RES. TEMP.  
FLUID  
CALIPER/CNHHA

Other Services:  
FLUID RES. TEMP.  
FLUID  
CALIPER/CNHHA

Other Services:  
FLUID RES. TEMP.  
FLUID  
CALIPER/CNHHA

COUNTY: BROWARD FL  
FIELD: N/A  
LOCATION: HTP 2A/ POMPANO BEACH  
WELL: MW-1  
COMPANY: DIVERSIFIED DRILLING

Permanent datum PAD  
Log Measured From ZERO FEET  
Drilling Measured From N/A

Date: 9-25-96  
Run No.: DME  
Depth-Driller: 1201.5'

Depth-Logger: 1201.5'  
Bit Log Interval: 980'  
Top Log Interval: 980'  
Type Log: LSM/SP  
Type Fluid In Hole: FORTHITTION

Salinity PPM CL: N/A  
Density: N/A  
Level: N/A  
Max Rec. Temp.: N/A  
Operating Rig Time: N/A  
Recorded By: JKL  
Witnessed By: H. SCHILLING  
Job Tkt. No.: N/A

Size	Lgt	From	To	Size	Lgt	From	To
6" STEEL	N/A	0'	990'	N/A	N/A	N/A	N/A
N/A	N/A	N/A	N/A	N/A	N/A	N/A	N/A
N/A	N/A	N/A	N/A	N/A	N/A	N/A	N/A
N/A	N/A	N/A	N/A	N/A	N/A	N/A	N/A
N/A	N/A	N/A	N/A	N/A	N/A	N/A	N/A
N/A	N/A	N/A	N/A	N/A	N/A	N/A	N/A
N/A	N/A	N/A	N/A	N/A	N/A	N/A	N/A
N/A	N/A	N/A	N/A	N/A	N/A	N/A	N/A
N/A	N/A	N/A	N/A	N/A	N/A	N/A	N/A
N/A	N/A	N/A	N/A	N/A	N/A	N/A	N/A

Size	Lgt	From	To	Size	Lgt	From	To
6" STEEL	N/A	0'	990'	N/A	N/A	N/A	N/A
N/A	N/A	N/A	N/A	N/A	N/A	N/A	N/A
N/A	N/A	N/A	N/A	N/A	N/A	N/A	N/A
N/A	N/A	N/A	N/A	N/A	N/A	N/A	N/A
N/A	N/A	N/A	N/A	N/A	N/A	N/A	N/A
N/A	N/A	N/A	N/A	N/A	N/A	N/A	N/A
N/A	N/A	N/A	N/A	N/A	N/A	N/A	N/A
N/A	N/A	N/A	N/A	N/A	N/A	N/A	N/A
N/A	N/A	N/A	N/A	N/A	N/A	N/A	N/A
N/A	N/A	N/A	N/A	N/A	N/A	N/A	N/A

Size	Lgt	From	To	Size	Lgt	From	To
6" STEEL	N/A	0'	990'	N/A	N/A	N/A	N/A
N/A	N/A	N/A	N/A	N/A	N/A	N/A	N/A
N/A	N/A	N/A	N/A	N/A	N/A	N/A	N/A
N/A	N/A	N/A	N/A	N/A	N/A	N/A	N/A
N/A	N/A	N/A	N/A	N/A	N/A	N/A	N/A
N/A	N/A	N/A	N/A	N/A	N/A	N/A	N/A
N/A	N/A	N/A	N/A	N/A	N/A	N/A	N/A
N/A	N/A	N/A	N/A	N/A	N/A	N/A	N/A
N/A	N/A	N/A	N/A	N/A	N/A	N/A	N/A
N/A	N/A	N/A	N/A	N/A	N/A	N/A	N/A

Size	Lgt	From	To	Size	Lgt	From	To
6" STEEL	N/A	0'	990'	N/A	N/A	N/A	N/A
N/A	N/A	N/A	N/A	N/A	N/A	N/A	N/A
N/A	N/A	N/A	N/A	N/A	N/A	N/A	N/A
N/A	N/A	N/A	N/A	N/A	N/A	N/A	N/A
N/A	N/A	N/A	N/A	N/A	N/A	N/A	N/A
N/A	N/A	N/A	N/A	N/A	N/A	N/A	N/A
N/A	N/A	N/A	N/A	N/A	N/A	N/A	N/A
N/A	N/A	N/A	N/A	N/A	N/A	N/A	N/A
N/A	N/A	N/A	N/A	N/A	N/A	N/A	N/A
N/A	N/A	N/A	N/A	N/A	N/A	N/A	N/A

Size	Lgt	From	To	Size	Lgt	From	To
6" STEEL	N/A	0'	990'	N/A	N/A	N/A	N/A
N/A	N/A	N/A	N/A	N/A	N/A	N/A	N/A
N/A	N/A	N/A	N/A	N/A	N/A	N/A	N/A
N/A	N/A	N/A	N/A	N/A	N/A	N/A	N/A
N/A	N/A	N/A	N/A	N/A	N/A	N/A	N/A
N/A	N/A	N/A	N/A	N/A	N/A	N/A	N/A
N/A	N/A	N/A	N/A	N/A	N/A	N/A	N/A
N/A	N/A	N/A	N/A	N/A	N/A	N/A	N/A
N/A	N/A	N/A	N/A	N/A	N/A	N/A	N/A
N/A	N/A	N/A	N/A	N/A	N/A	N/A	N/A

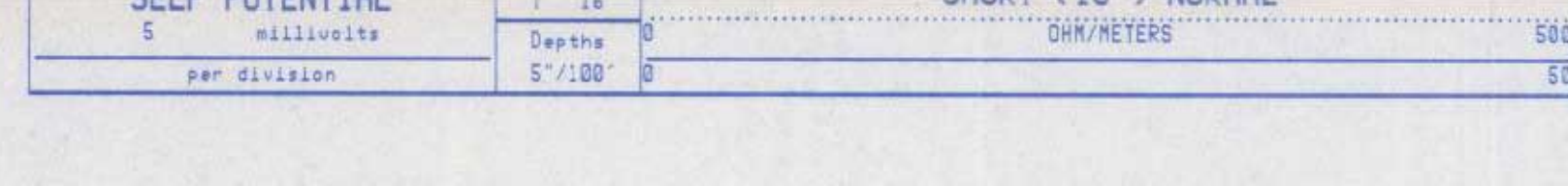
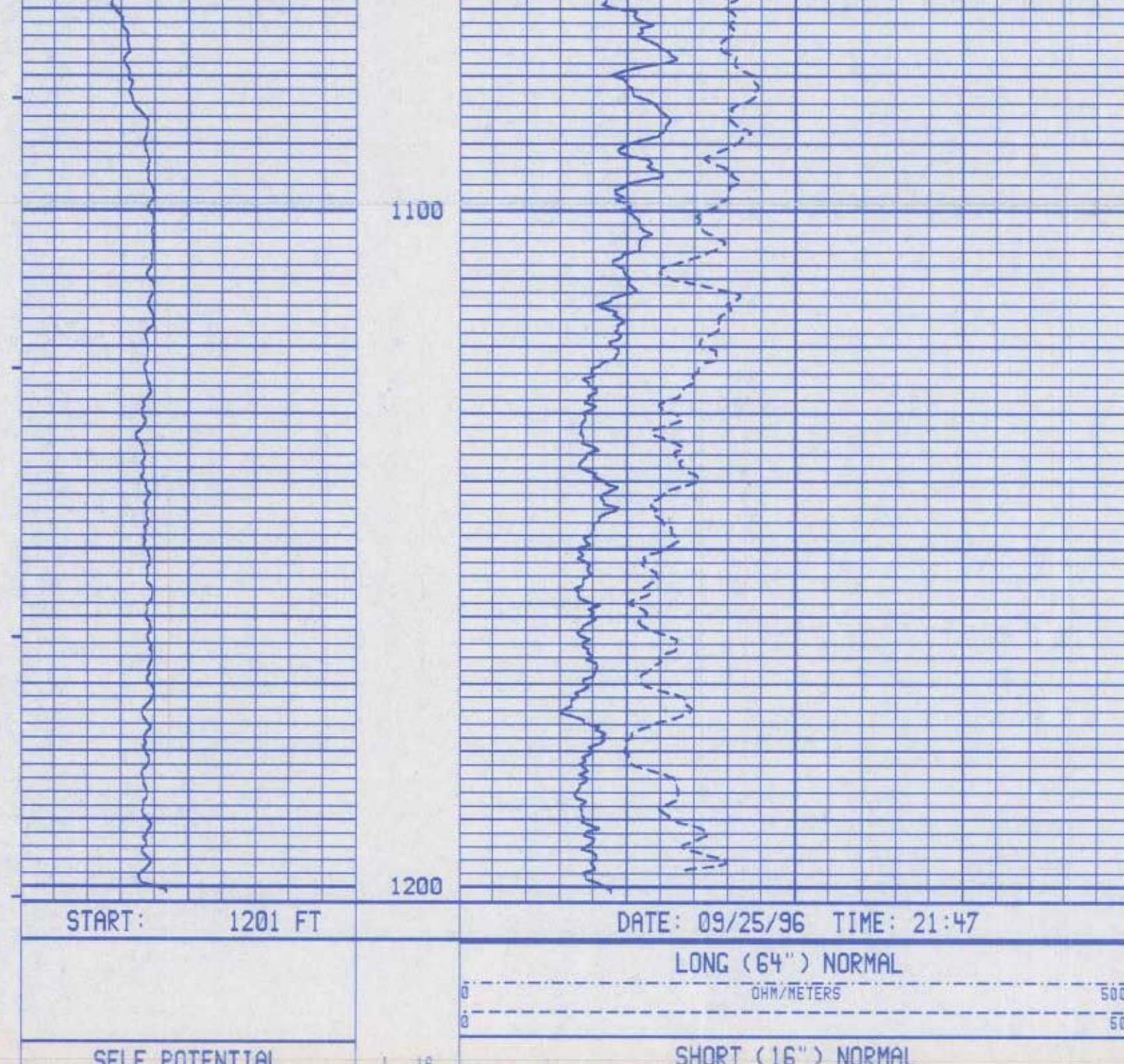
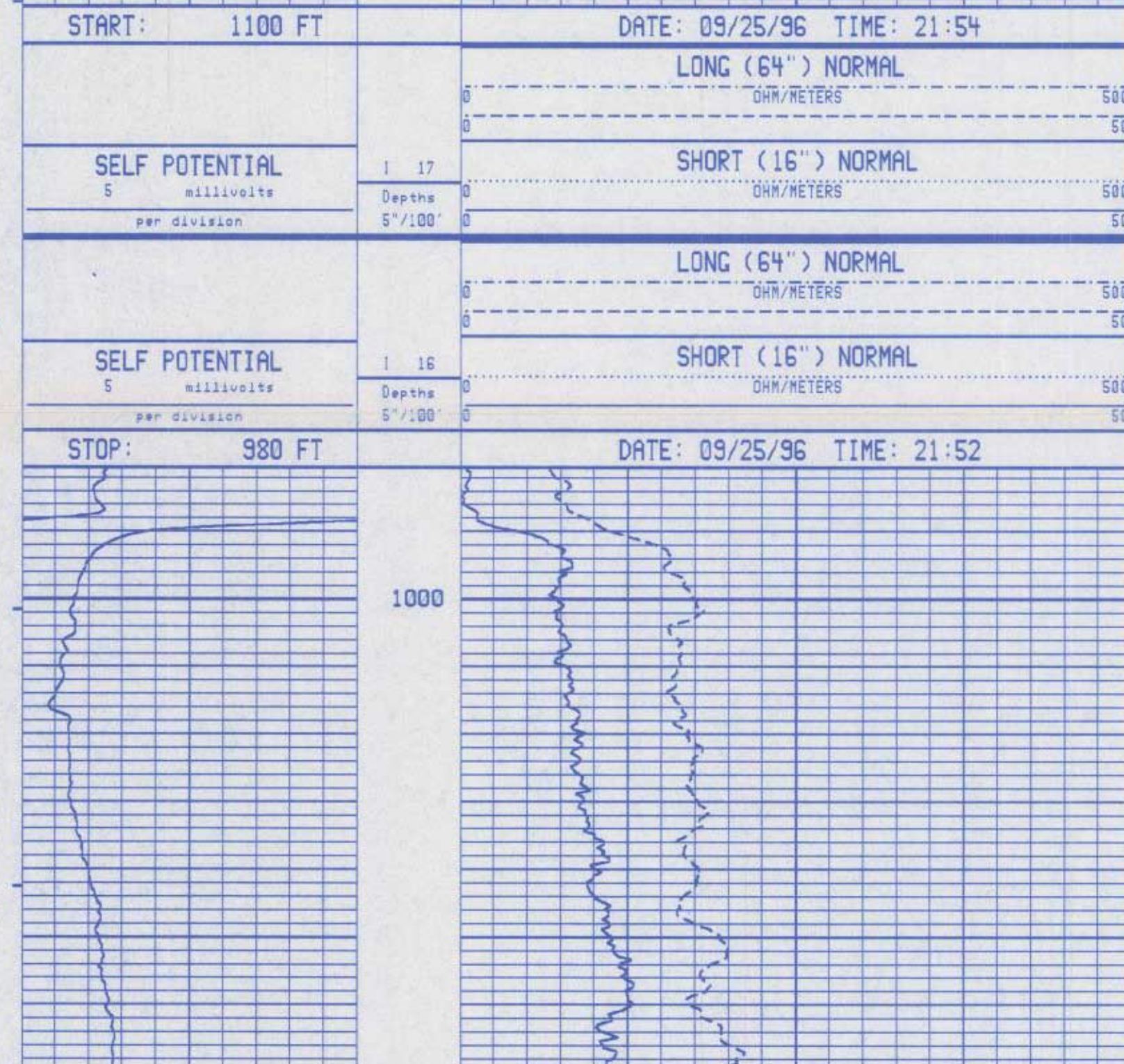
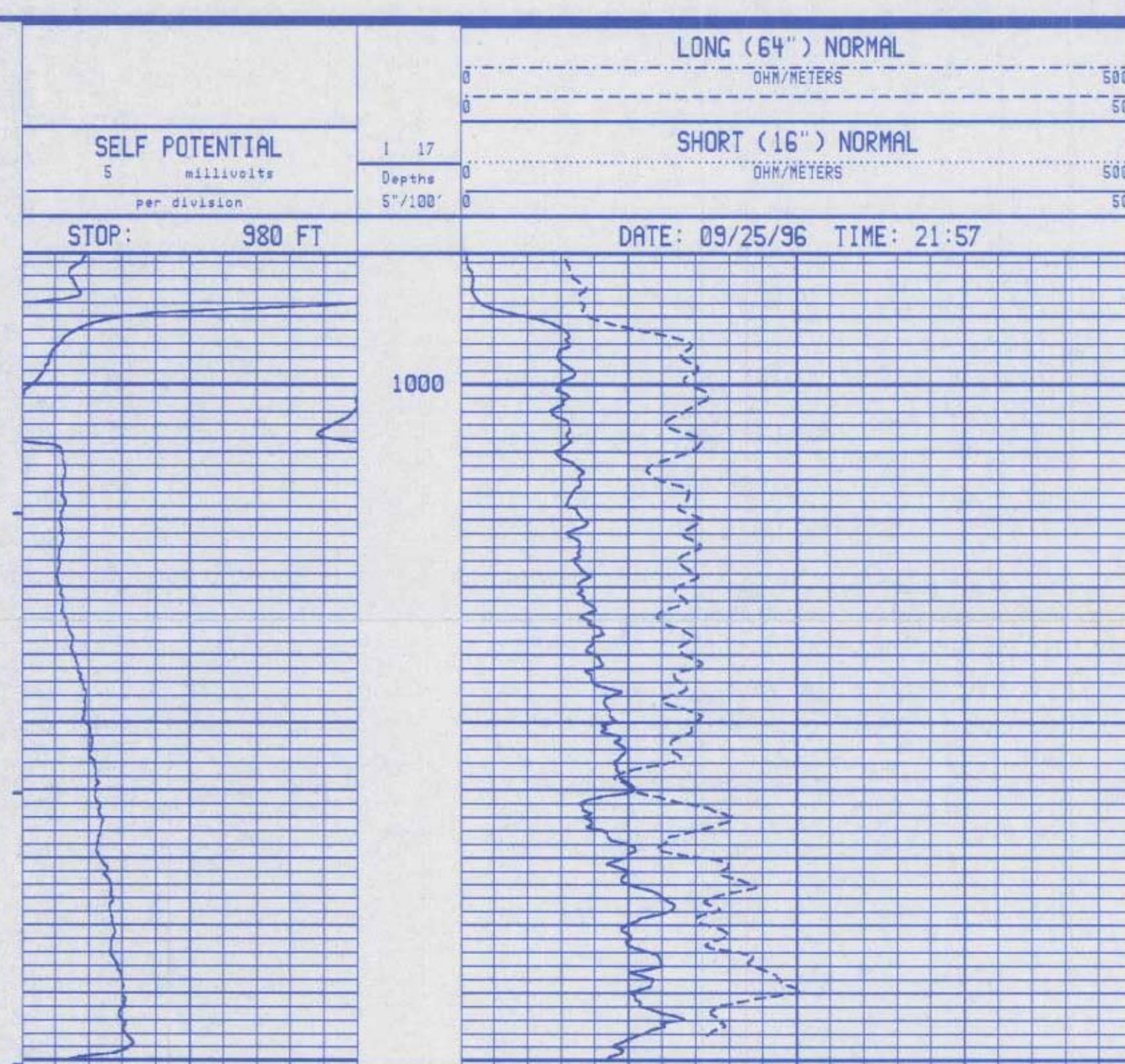
Field Here

REFERENCE LITERATURE

REMARKS: TAPE 5-96-1

WELL FLOWING 480 GPM.

NOTICE: All interpretations are opinions based on inferences from electrical or other measurements and we cannot, and do not, guarantee the accuracy or correctness of any interpretations, and we shall not, except in the case of gross or willful negligence on our part, be liable or responsible for any loss, costs, damages or expenses incurred or sustained by anyone resulting from any interpretation made by one of our officers, agents or employees. These interpretations are also subject to our General Terms and Conditions as set out in our current Price Schedule. GEOPHEX LTD.





GEOPHEX LTD.

FLUID FLOW  
FLOWING WELL

TAMPA, FL

480 GPM

COMPANY DIVERSIFIED DRILLING

WELL MW-1

FIELD N/A

COUNTY BROWARD

LOCATION WIP 2A/ POMPANO BEACH

COUNTY: BROWARD FL

FIELD: N/A

LOCATION: WIP 2A/ POMPANO BEACH

WELL: MW-1

COUNTY: BROWARD

LOCATION: WIP 2A/ POMPANO BEACH

Other Services  
FLUID RES. TEMP.  
L.S.M/S  
C.M.I.T.E.R./D.M.M.

STATE FL

Sec. N/A

Typ. N/A

Rge. N/A

Elev. N/A

Other Perms. Datum

Elev. K. B. N/A

D. F. N/A

C. L. N/A

Permanent datum pipe

Log measured from ZERO FEET

Drilling measured from N/A

Date 9-25-96

Run No. ONE

Depth-Driller 1200'

Depth-Logger 1201.5'

Rim Log Interval 1200'

Top Log Interval 900'

Type Log FLDL (DMM)

Type Fluid In Hole FERRITIN

Salinity PPT CL N/A

Density N/A

Level N/A

Max Rec. Temp. N/A

Operating Rig Time N/A

Recorded By JEL

Witnessed By H. SCHILLING

Job Trk. No. N/A

Size 6" STEEL

Light From To

Size 6" STEEL

Light From To

Size 6" STEEL

Light From To

Size 6" STEEL

Light From To

Size 6" STEEL

Light From To

Size 6" STEEL

Light From To

Size 6" STEEL

Light From To

Size 6" STEEL

Light From To

Size 6" STEEL

Light From To

Size 6" STEEL

Light From To

Size 6" STEEL

Light From To

Size 6" STEEL

Light From To

Size 6" STEEL

Light From To

Size 6" STEEL

Light From To

Size 6" STEEL

Light From To

Size 6" STEEL

Light From To

Size 6" STEEL

Light From To

Size 6" STEEL

Light From To

Size 6" STEEL

Light From To

Size 6" STEEL

Light From To

Size 6" STEEL

Light From To

CWP DRS 1.2616

Fold Here

REFERENCE LITERATURE

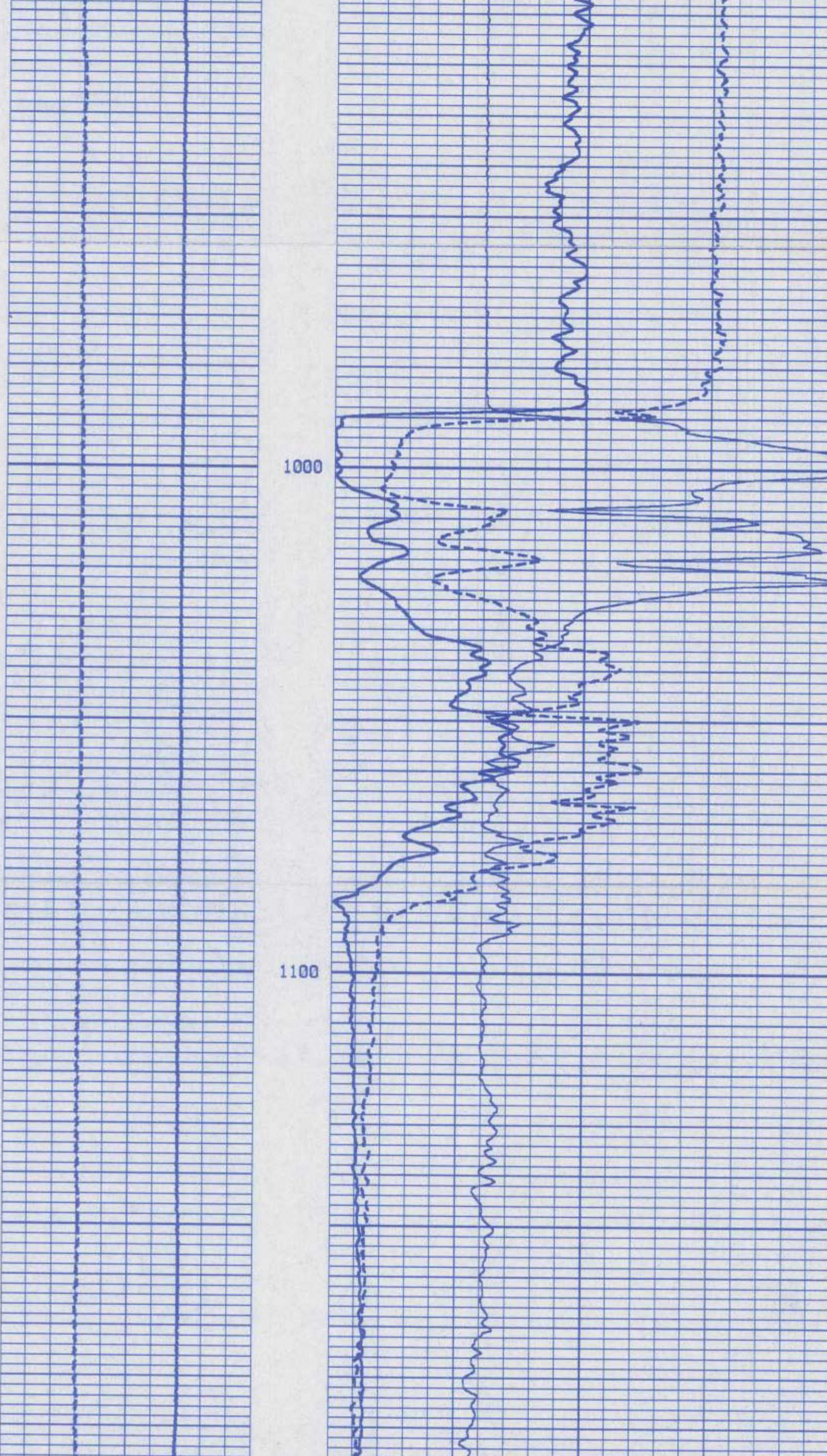
REMARKS TAPE 5-96-1

WELL FLOWING 480 GPM.

NOTICE: All interpretations are opinions based on inferences from electrical or other measurements and we cannot, and do not, guarantee the accuracy or correctness of any interpretations, and we shall not, except in the case of gross or willful negligence on our part, be liable or responsible for any loss, costs, damages or expenses incurred or sustained by anyone resulting from any interpretation made by one of our officers, agents or employees. These interpretations are also subject to our General Terms and Conditions as set out in our current Price Schedule. GEOPHEX LTD.

LINE SPEED	125	Feet per Minute	125
LINE SPEED	125	Feet per Minute	125

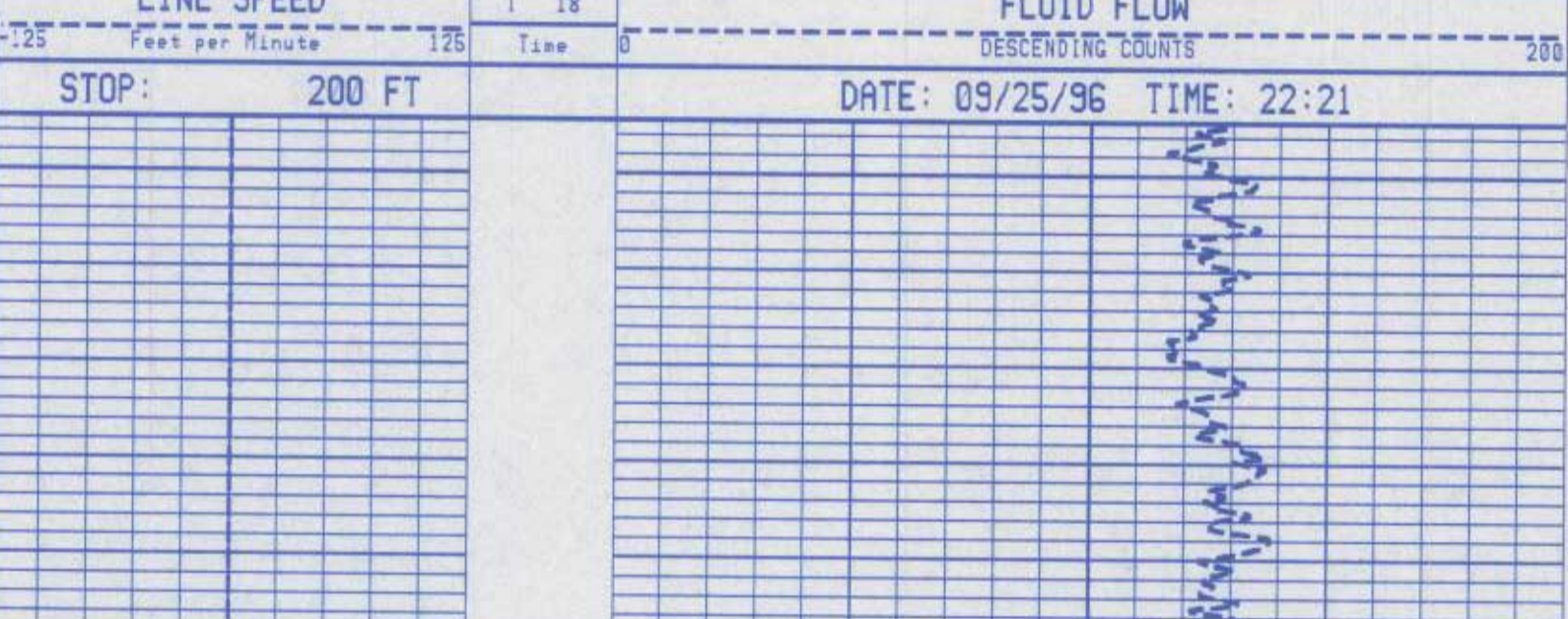
STOP: 900 FT DATE: 09/25/96



START: 1200 FT DATE: 09/25/96

LINE SPEED	125	Feet per Minute	125
LINE SPEED	125	Feet per Minute	125

STOP: 200 FT DATE: 09/25/96 TIME: 22:21



START: 200 FT DATE: 09/25/96 TIME: 22:20

LINE SPEED	125	Feet per Minute	125
LINE SPEED	125	Feet per Minute	125

STOP: 200 FT DATE: 09/25/96 TIME: 22:33



START: 240 FT DATE: 09/25/96 TIME: 22:31

LINE SPEED	125	Feet per Minute	125
LINE SPEED	125	Feet per Minute	125

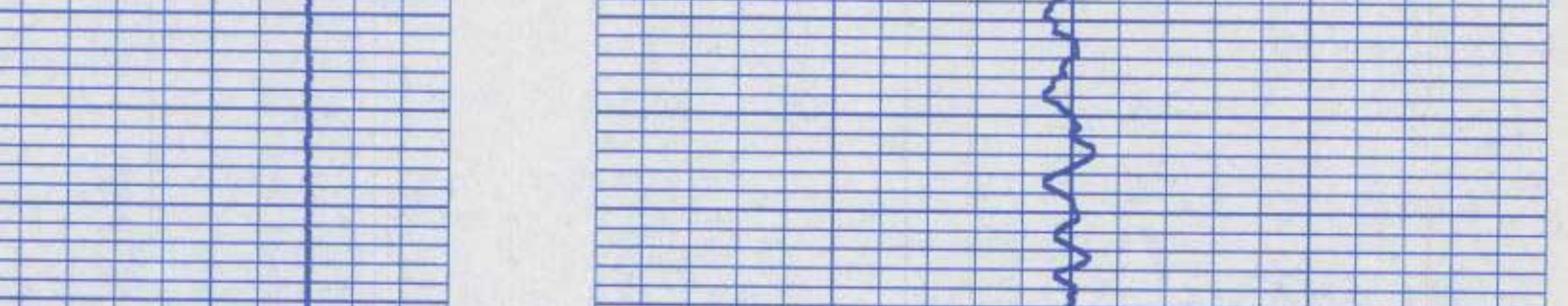
STOP: 200 FT DATE: 09/25/96 TIME: 22:27



START: 240 FT DATE: 09/25/96 TIME: 22:30

LINE SPEED	125	Feet per Minute	125
LINE SPEED	125	Feet per Minute	125

STOP: 200 FT DATE: 09/25/96 TIME: 22:26



START: 252 FT DATE: 09/25/96 TIME: 22:25

LINE SPEED	125	Feet per Minute	125
LINE SPEED	125	Feet per Minute	125

STOP: 200 FT DATE: 09/25/96 TIME: 22:22



START: 250 FT DATE: 09/25/96 TIME: 22:24

LINE SPEED	125	Feet per Minute	125
LINE SPEED	125	Feet per Minute	125

STOP: 250 FT DATE: 09/25/96 TIME: 22:24





GEOPHEX LTD. FLUID RESISTIVITY  
FLUID TEMPERATURE

TAMPA, FL

COMPANY DIVERSIFIED DRILLING

WELL MM-1  
FIELD N/A  
COUNTY BROWARD  
STATE FL

LOCATION  
MTP 2A/ POMPANO BEACH  
N/A  
Rge. N/A  
Typ. N/A

COUNTY: BROWARD FL  
FIELD: N/A  
LOCATION: MTP 2A/ POMPANO BEACH  
WELL: MM-1  
COMPANY: DIVERSIFIED DRILLING

Permanent datum PWD  
Log Measured From ZERO FEET  
Drilling Measured From N/A

Date 9-25-96  
Run No. DNE  
Depth-Driller 1200'

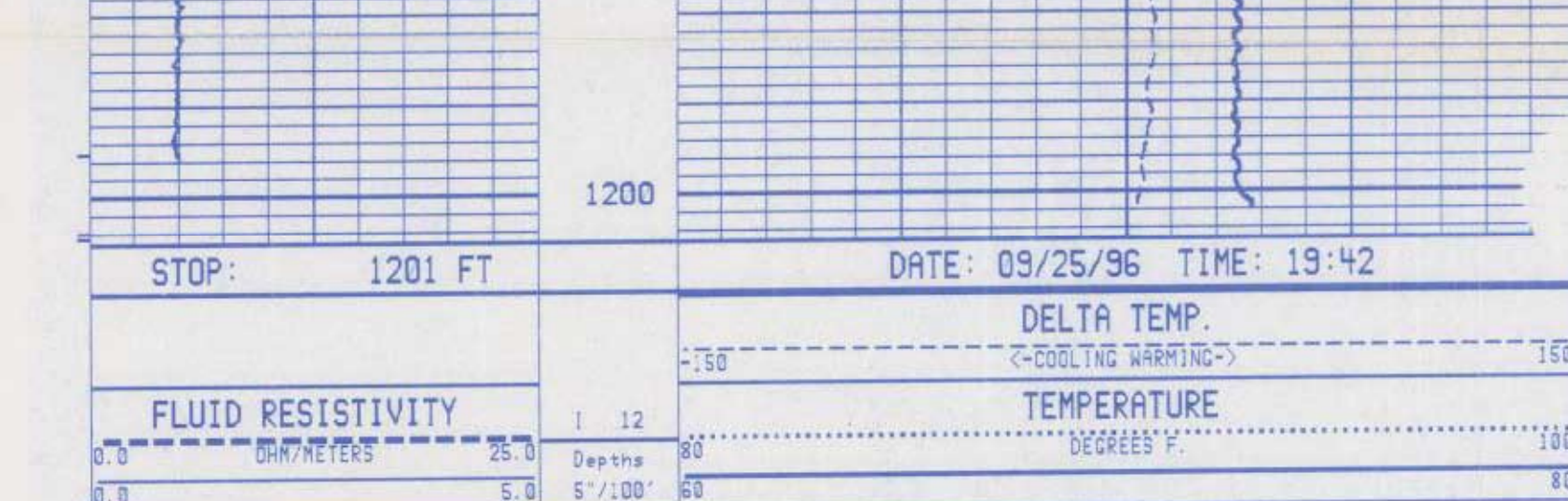
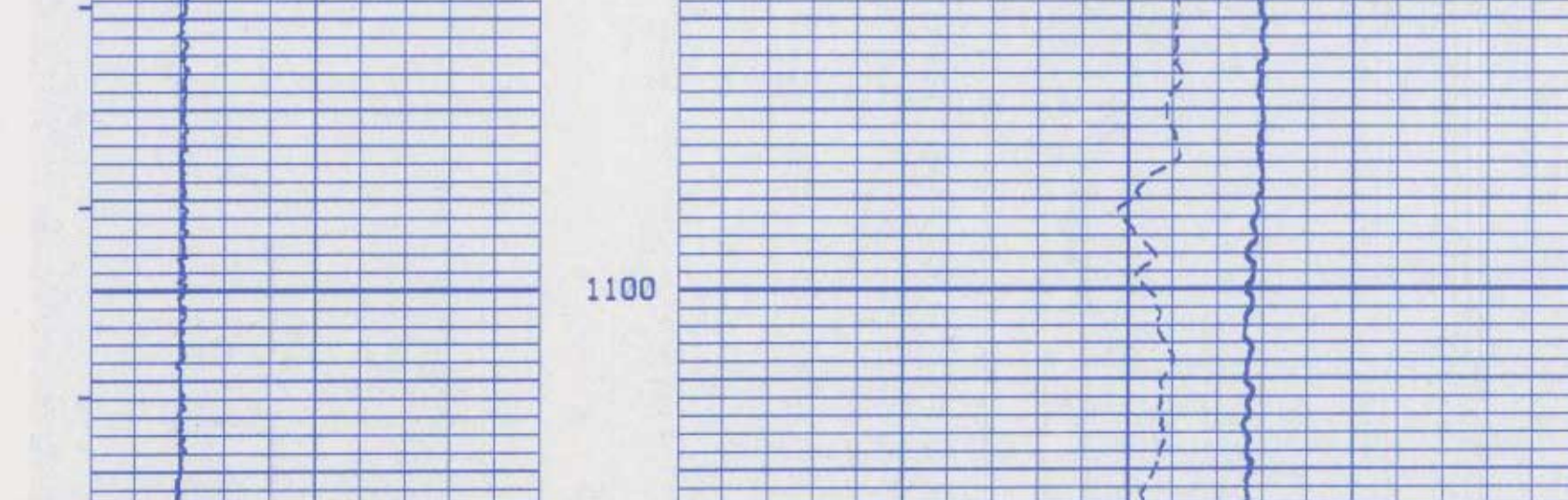
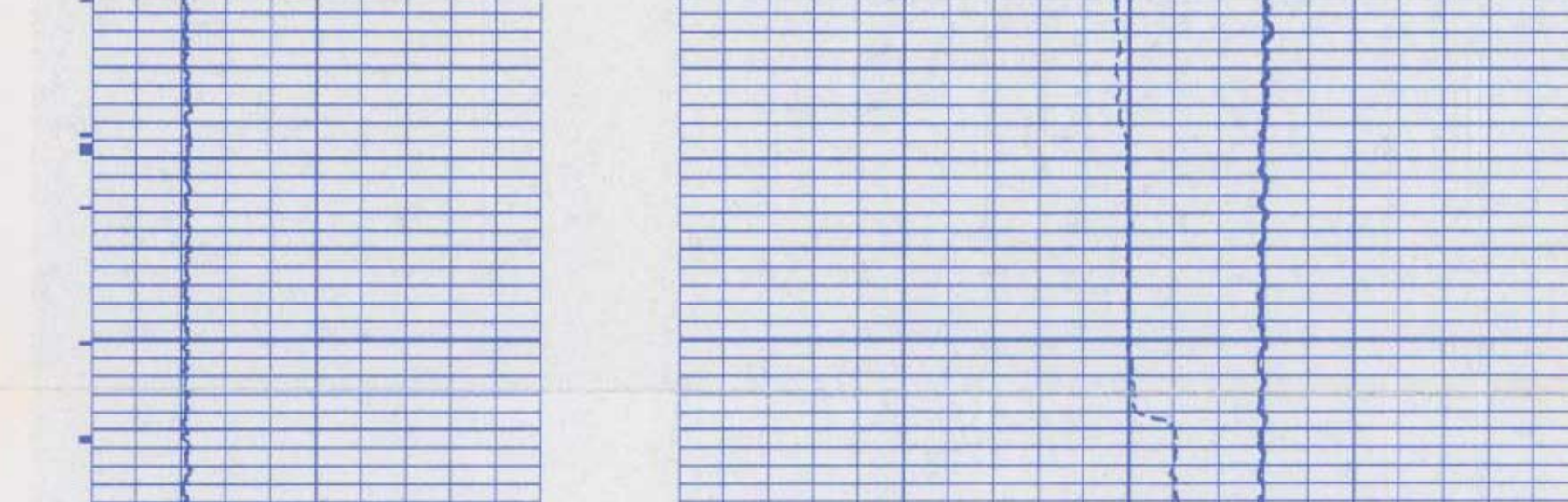
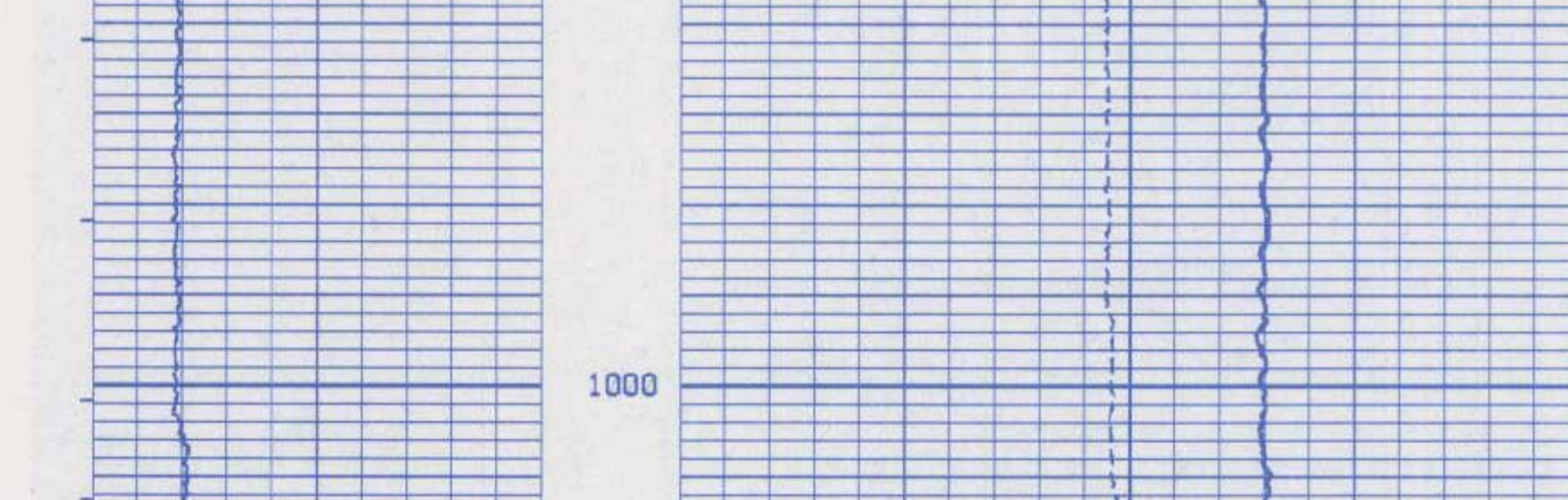
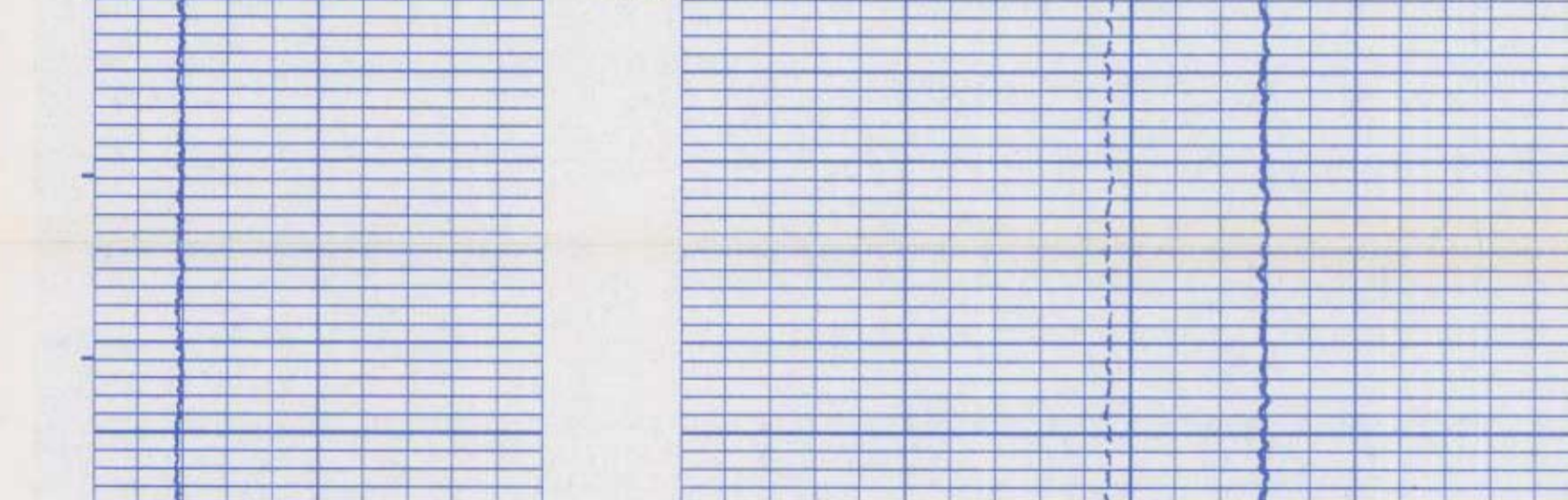
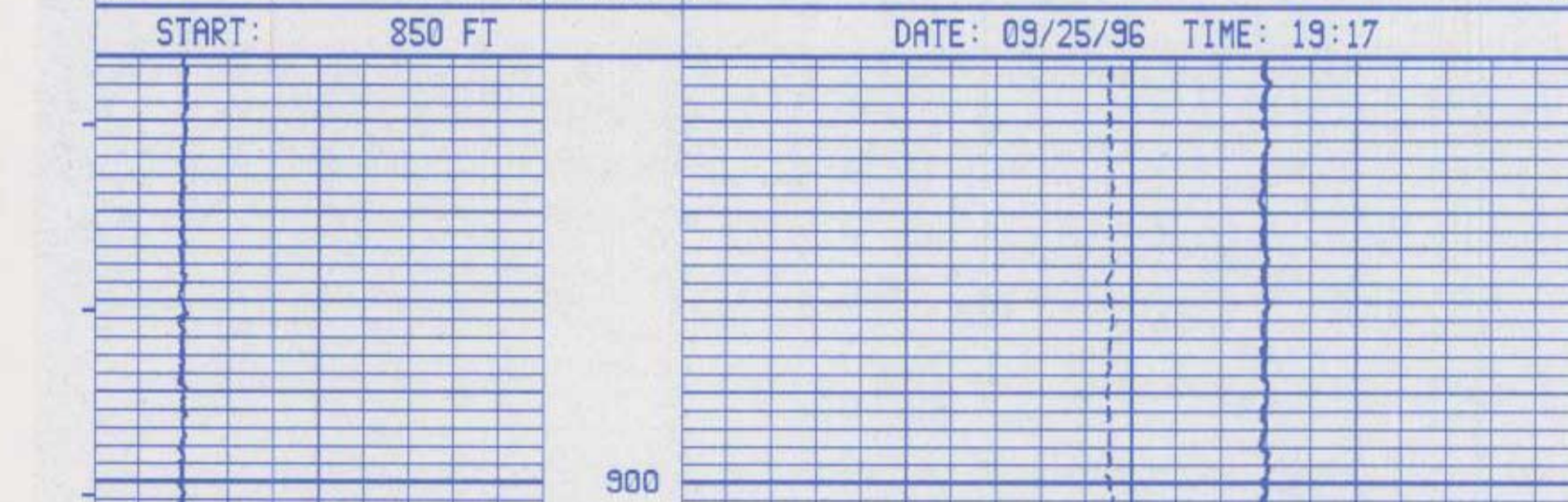
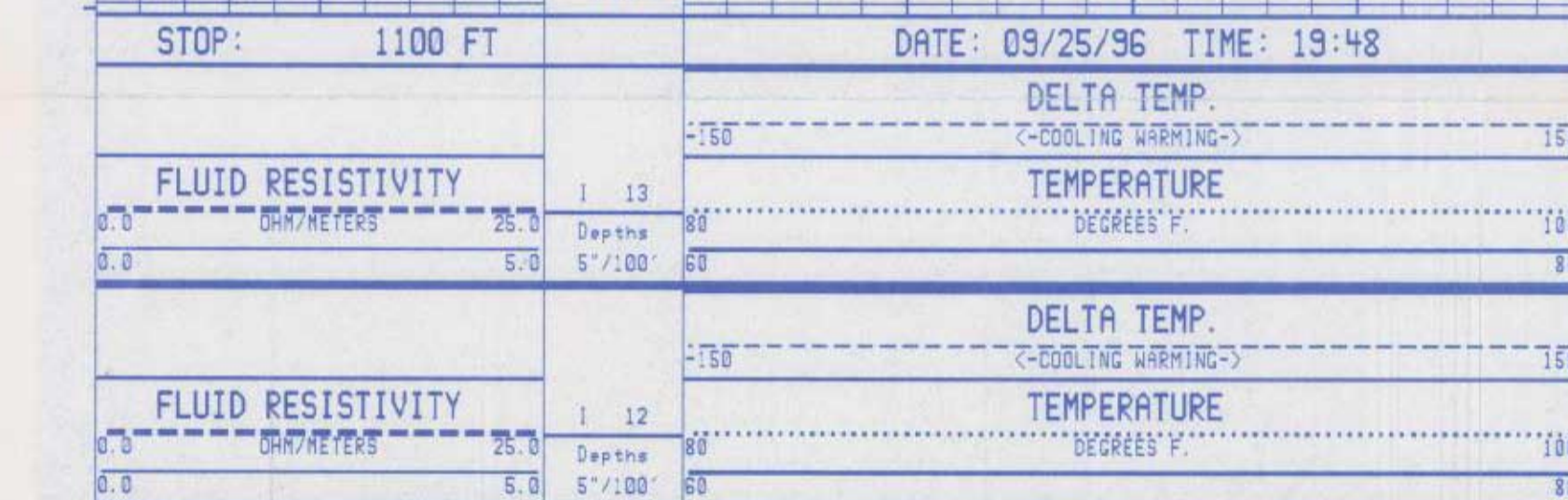
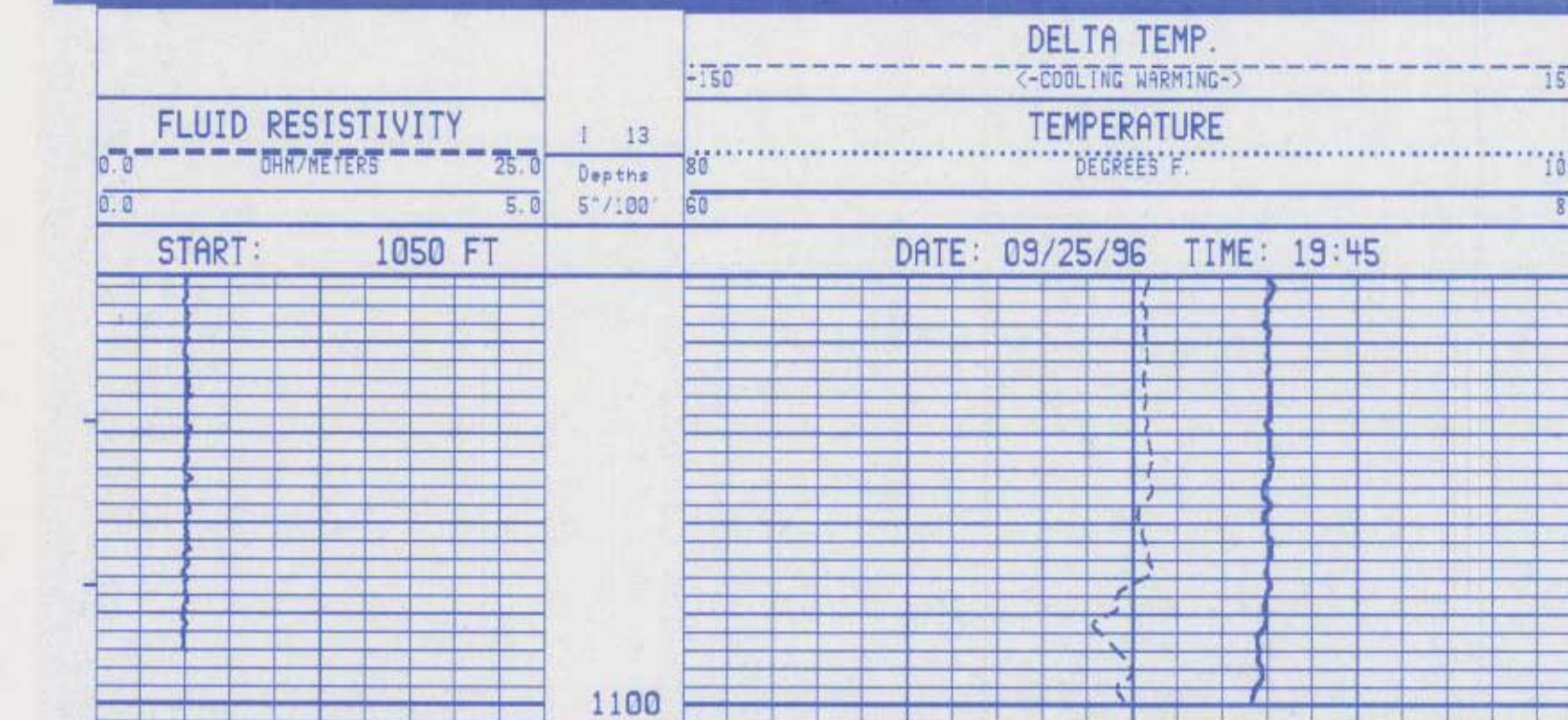
Depth-Logger 1201.5'  
Btm Log Interval 1201.5'  
Top Log Interval 850'

Type Log FILRES  
Type Fluid In Hole FDRMHTTN  
Salinity PPM Cl. N/A  
Density N/A  
Level N/A  
Max Rec. Temp. N/A  
Operating Rig Time N/A  
Recorded By JKL  
Witnessed By H. SCHILLING  
Job Tkt. No. N/A

CASING RECORD				TUBING RECORD			
Size	Hgt	From	To	Size	Hgt	From	To
6" STEEL	N/A	0'	990'	N/A	N/A	N/A	N/A
N/A	N/A	N/A	N/A	N/A	N/A	N/A	N/A
N/A	N/A	N/A	N/A	N/A	N/A	N/A	N/A
N/A	N/A	N/A	N/A	N/A	N/A	N/A	N/A
N/A	N/A	N/A	N/A	N/A	N/A	N/A	N/A
N/A	N/A	N/A	N/A	N/A	N/A	N/A	N/A
N/A	N/A	N/A	N/A	N/A	N/A	N/A	N/A
N/A	N/A	N/A	N/A	N/A	N/A	N/A	N/A
N/A	N/A	N/A	N/A	N/A	N/A	N/A	N/A
N/A	N/A	N/A	N/A	N/A	N/A	N/A	N/A

REFERENCE LITERATURE  
REMARKS: TAPE 5-96-1  
TOOL 1538  
WELL FLOWING 480 GPH.

NOTICE: All interpretations are opinions based on inferences from electrical or other measurements and we cannot, and do not, guarantee the accuracy or correctness of any interpretations, and we shall not, except in the case of gross or willful negligence on our part, be liable or responsible for any loss, costs, damages or expenses incurred or sustained by anyone resulting from any interpretation made by one of our officers, agents or employees. These interpretations are also subject to our General Terms and Conditions as set out in our current Price Schedule. GEOPHEX LTD.





**GEOPEX LTD.**

**CALIPER**

TAMPA, FL

**COMPANY** DIVERSIFIED DRILLING

**WELL** MM-1

**FIELD** N/A

**COUNTY** BROWARD

**STATE** FL

**LOCATION** WTR 2N/ POMPANO BEACH

**Sec. N/A** Twp N/A/R

**Other Services:** FLUID REG. TEMP. LSN/SP

**Permanant datum PWD** ZERO FEET

**Log Measured From** ZERO FEET

**Drilling Measured From** N/A

**Date** 9-25-96

**Run No.** DME

**Depth Driller** 1200'

**Depth Logger** 1201.5'

**True Log Interval** 1201'

**Top Log Interval** 980'

**Log Type** CONJUGATE/GAMMA

**Log Type** CONJUGATE

**Log Type** CONJUGATE

**Log Type** CONJUGATE

**Log Type** CONJUGATE

**Log Type** CONJUGATE

**Log Type** CONJUGATE

**Log Type** CONJUGATE

**Log Type** CONJUGATE

CWP DRS 1, 2616

REFERENCE LITERATURE:

REMARKS: TAPE 5-86-1  
TOOL SIDENAL LED  
WELL FLOWING 480 GPM.

NOTICE: All interpretations are opinions based on inferences from electrical or other measurements and we cannot, and do not, guarantee the accuracy or correctness of any interpretations, and we shall not, except in the case of gross or willful negligence on our part, be liable or responsible for any loss, costs, damages or expenses incurred or sustained by anyone resulting from any interpretation made by one of our officers, agents or employees. These interpretations are also subject to our General Terms and Conditions as set out in our current Price Schedule. GEOPEX LTD.

