



SURVEYOR'S REPORT

**Specific Purpose Survey of the
United States Geological Survey
Recorder Well G-3705
in
Miami-Dade County, Florida**

Prepared for:

South Florida Water Management District

3301 Gun—Club Road
West Palm Beach, Florida 33406
Ph. (561) 686-8800 (ext. 2978)
Fax (561) 682-0066

Prepared by:

Mike Bartholomew, PSM, President
Florida Professional Surveyor and Mapper
License Number 5666
State of Florida

Biscayne Engineering Company, Inc. LB No 0129
529 West Flagler Street, Miami, FL. 33130
Tel (305) 324-7671

Field Date: February 7, 2019
Report Date: March 20, 2019

INSPIRED BEYOND MEASURE • SINCE 1898

**CORPORATE
HEADQUARTERS**
529 West Flagler Street,
Miami, FL 33130
Tel. 305.324.7671
Fax 305.324.0809

www.BiscayneEngineering.com
info@BiscayneEngineering.com

**PALM BEACH
BRANCH**
449 NW 35th Street,
Boca Raton, FL 33431
Tel. 561.603.2329
Fax 561.609.2317

TABLE OF CONTENTS

Title	Page
Cover Sheet	1
Table of Contents	2
Purpose	3
Location of Project	3
Surveyor's Report	4
Project Datum's	4
Leveling and GPS Methods	4
Equipment used	4
Vertical Control Points	5 & 6
Benchmarks summary	5 & 6
Field Notes	6
Project Results	7
Surveyor's Notes	9
Surveyor's Certificate	10
SFWMD Site Form	11

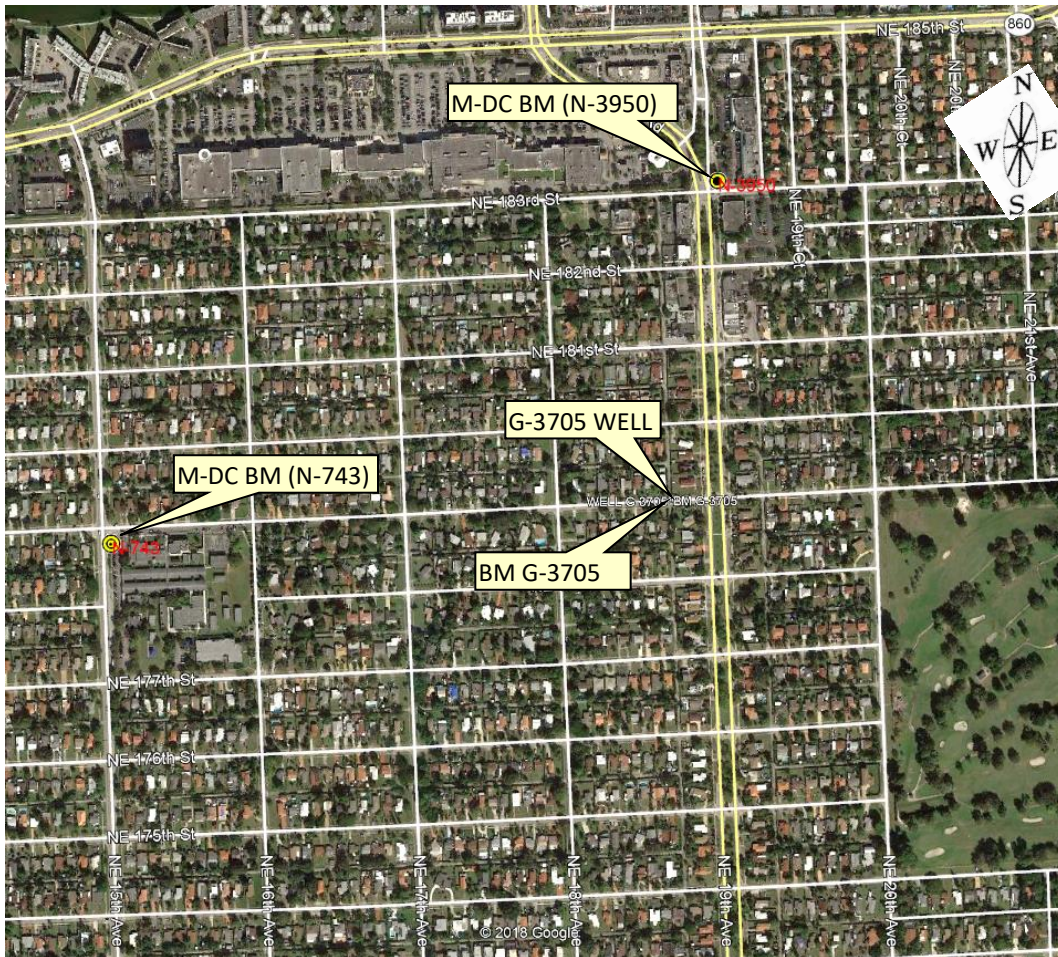
SURVEYOR'S REPORT

PURPOSE

The purpose of this survey is to set an Elevation Reference Mark (Benchmark) being a mag nail and washer and to establish a North American Vertical Datum of 1988 (NAVD 88) elevation on said Benchmark and on an additional Reference Point with a Brass plate, both at United States Geological Survey Well **G-3705**.

LOCATION OF PROJECT

The United States Geological Survey's Recorder Well **G-3705** is located in Section 9, Township 52 South, Range 42 East, Miami-Dade County, Florida.



General Location (Intended Display scale is "Not to Scale")

PROJECT VERTICAL DATUM

The project vertical datum is the North American Vertical Datum (NAVD) of 1988.

To convert the NAVD 88 elevation to the National Geodetic Vertical Datum of 1929 at station **G-3705 add 1.57'**. These values are based on Corpscon 6.0.1 a US. Army Corps of Engineers Engineering Research and Development Center Topographic Engineering Center Alexandria, Virginia Windows-based program to convert coordinates and elevations between datum's using vertcon05.txt and vertcon05.05 files supplied by the US. Army Corps of Engineers South Atlantic Division, Jacksonville Fl.

PROJECT HORIZONTAL DATUM

The project horizontal datum is the North American Datum 83 (NAD 83(2011)) (EPOCH:2010.0000).

LEVELING METHODS

The leveling for this project was performed in accordance with standard survey practice using conventional third order methods, techniques and equipment.

The allowable error (.05 √ miles) on this project meets or exceeds third order closures as required by SFWMD for this project per executed SOW for 4600003705-WO04 and discussions with SFWMD.

A level loop was run from the Miami-Dade County Benchmark N-743, through the well site, and to the Miami-Dade County Benchmark N-3950. The measurements were collected using an Automatic Level and were hand written in Biscayne Engineering Co, Inc. Field Book 2990 pages 18-23, dated February 07, 2019, reduced and adjusted electronically. Additional data was manually recorded in the field book.

GPS METHODS

Latitude and Longitude for Benchmark G-3705 were established by observing a 3-minute session of GPS data on February 07, 2019, using a Trimble R-8-S and The Florida Permanent Reference Network (FPRN). The FPRN network consists of nearly 100 Continuously Operating Reference Stations (CORS) located throughout Florida.


EQUIPMENT USED


- Trimble GPS unit R-8-S, Serial Number 5625R066118.
- TOPCON DL-502 digital level Serial Number 512386 and a folding bar code rod.
- TOPCON Total Station ES 103, Serial Number ZQ000748.
- TOPCON Auto-level ATG3, Serial Number 5F9515.

SURVEYOR'S REPORT

VERTICAL CONTROL POINT

The Vertical Control point utilized and set as part of this survey is the:

M-DC BM N-743						
25° 56' 24.51" (N)	80° 10' 13.76" (W)		8.99 ft.	(NAVD88)	2.74 m	Published
			10.56 ft.	(NGVD29)	3.22 m	Published
			THE MARK IS LOCATED: NE 179 ST --- 66' SOUTH OF C/L NE 15 AVE --- 41' EAST OF C/L PK NAIL AND BRASS WASHER IN CONCRETE SIDEWALK.			

M-DC BM N-3950						
25° 56' 39.72"(N)	80° 09' 45.48" (W)		10.22 ft.	(NGVD 29)	3.12 m	Published
			11.78 ft.	(NAVD-88)	3.59 m	Published
			THE MARK IS LOCATED: NE 183 ST --- 50' NORTH OF C/L NE 19 AVE --- 35' EAST OF NORTHBOUND LANE PK NAIL AND ALUMINUM WASHER IN CONC IN FRONT OF TRAFFIC SIGNAL POLE			

BM: G-3705 (Set as part of this survey)

SURVEYOR'S REPORT

25° 56' 26.43" (N)	80° 09' 47.58" (W)	8.53 ft.	(NAVD88)	2.60 m	Level run
		10.10 ft.	(NGVD29)	3.08 m	Converted
			1.57 ft. (conversion factor)		



STATION IS A MAG NAIL AND WASHER STAMPED "BEC 0129 AND G-3705" SET ON THE SW CORNER OF A CONCRETE SLAB OF A AT&T CABLE BOX

LOCATED: NE 19TH AVENUE --- 150' WEST OF CL.
NE 179TH STREET --- 18' NORTH OF CL.

Field Book 2990, Page 19

SET	BS	MEAN	HI	FS	MEAN	ELEVATION	BM ELEV	DESCRIPTION
TP N. 4	5.805 4.765 3.725	4.765	13.093				8.328	
TP N. 5				5.84 4.87 3.905	4.872			SET CORNER 1/4" x 1/4" SOUTH OF THE NORTH EP OF THE NE 179 ST AND 401.00' EAST OF THE TP N. 4
SHAKE	5.645 4.59 3.54	4.592	12.813					
TP N. 6								SET CORNER 1/4" x 1/4" SOUTH OF THE NORTH EP OF THE NE 179 ST AND 426.5' EAST OF THE TP N. 5
SHAKE	5.36 4.93 4.50	4.93	12.743					
BM - 1				4.80 4.375 3.955	4.375	8.53		SET MINLW BEC 0129, IN THE SW CORNER OF A CONC. SLAB OF A AT&T CABLE BOX
SHAKE	4.90 4.47 4.045	4.472	12.992					
GPS CP-3				5.275 4.935 4.59	4.935			SET MINLW BEC 0129, ON SOUTH CONC. SIDEWALK ON THE NE 179 ST AND FRONT TO NE PROP. CORNER OF THE PROPERTY #1880 NE 179 ST

**BM G-3705
ELEVATION: 8.53'
(NAVD88)**

8.527

PROJECT RESULTS

Overall Site



Looking Northerly (Oblique not to scale)

SURVEYOR'S REPORT


Tabular Form

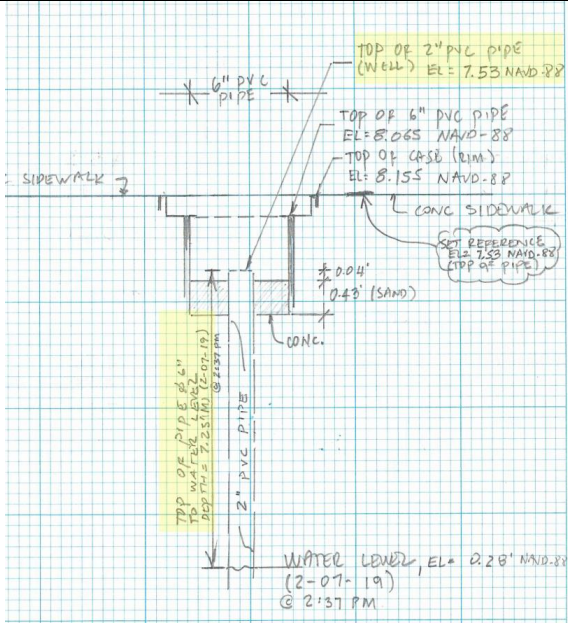
Reference and Ground Elevations: (NAVD88)			
Well	Ground Elevation	Reference Elevation	Comments
G-3705	8.08 ft.	7.53 ft.	Top of 2" PVC PIPE
Offset to NGVD29: +1.57' (See Project Vertical Datum Notes in Page: 4)			
Well diameter		Casing material	DTW
2"		Metal	7.25 ft. (02/07/19 at 2:37 PM)

USGS Published: (Per USGS Report Site #: 255625080094901 G-3705) (NGVD29)			
Well	Ground Elevation	Reference Elevation	Comments
G-3705	-	11.68 ft.	Top of Base

Source & Site Benchmark	NAVD88	NGVD29 (Published)	NGVD29 (Corpscon)
N-743 (M-DC)	8.99 ft. (Published)	10.56 ft.	
N-3950 (M-DC)	10.22 ft. (Published)	11.78 ft.	
G-3705 (SFWMD)	8.53 ft. (Measured)		10.10 ft. (Converted)

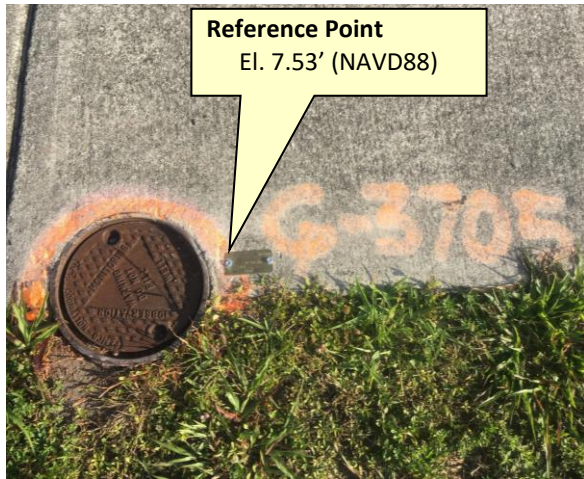
Well Photos and Diagrams





SURVEYOR'S REPORT

Well Photos and Diagrams (Continued)



Side view (Oblique Not to scale)



Top view (Not to scale)

Surveyor's Notes:

1. All measurements herein are in United States Survey feet and decimal thereof, unless otherwise specified.
2. Underground utilities were not located as part of this survey.
3. This survey report or copies thereof are not valid without the original signature and seal of a Florida licensed Surveyor and Mapper.
4. Additions or deletions to this survey report by other than the signing party (or parties) is prohibited without written consent of the signing party (or parties).
5. To convert from NAVD 88 to NGVD 29 add 1.57 feet. This value is based on Corpscon 6.0.1 a U.S. Army Corps of Engineers Engineering Research and Development Center Topographic Engineering Center Alexandria, Virginia Windows-based program to convert coordinates and elevations between datum's using vertcon05.txt and vertcon05.05 files supplied by the U.S. Army Corps of Engineers South Atlantic Division, Jacksonville Fl.
6. Date of last field work: February 7, 2019, BEC job No. 03-86445.
7. SFWMD Data records (on file at the District's headquarters):
 - A. Electronic Data files:
 - Miscellaneous picture files
 - B. Conventional reporting
 - Field Book: 2990 pages 18-23

SURVEYOR'S REPORT

Abbreviations:

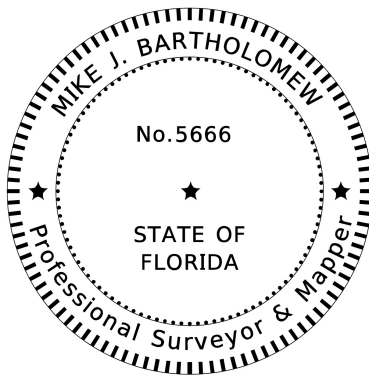
- EI.** - Elevation
- DTW** - Distance to the water table inside the well
- M-DC** - Miami-Dade County
- NAVD 88** - North American Vertical Datum of 1988
- NGVD 29** - National Geodetic Vertical Datum of 1929
- NGS** - National Geodetic Survey
- PSM** - Professional Surveyor & Mapper
- PID** - Permanent Identifiers
- SFWMD** - South Florida Water Management District
- USGS** - United States Geological Survey
- BEC** - Biscayne Engineering Company, Inc.

SURVEYOR'S CERTIFICATION

In my professional opinion this Specific Purpose Survey meets applicable portions of the Standards of Practice set forth by the Florida Board of Professional Surveyors and Mappers in Chapter 5J-17, Florida Administrative Code. This report is prepared for the sole and specific use of the South Florida Water Management District and is not assignable.

Last date of Survey
February 7, 2019

Mike Bartholomew, PSM, President
Florida Professional Surveyor and Mapper
License Number 5666
State of Florida
Biscayne Engineering Company, Inc. LB No 0129
529 West Flagler Street, Miami, FL. 33130
Tel (305) 324-7671





SOUTH FLORIDA WATER MANAGEMENT DISTRICT

Rev. 4/18

DESIGNATION: G-3705		PROJECT: G-3705	
ESTABLISHED BY: SOUTH FLORIDA WATER MANAGEMENT DISTRICT		SURVEYOR: Mike Bartholomew	
RECOVERED BY: BISCAYNE ENGINEERING CO.		DATE: 02/07/19	
GEOGRAPHIC POSITION			
SECTION 9	TOWNSHIP 52 SOUTH	RANGE 42 EAST	
COUNTY: MIAMI-DADE	NAME OF QUADRANGLE: NORTH MIAMI GEOGRAPHIC INDEX OF QUAD:		
HORIZONTAL DATUM: 1927 (1983) 2022 Other _____ (circle one) ZONE (E) or W			
VERTICAL DATUM: MSL 1929 (1988) 2022 Other _____ (circle one)			
VERTICAL ACCURACY: 1 2 (3)			
STATE PLANE COORDINATE	(N) Y= 585007.51	(E) X= 931152.34	NAVD 88 EL. 8.53' NGVD 29 EL. 10.10'
CORPSCON 6.0.1 CONVERSION FACTOR (NAVD88 TO NGVD29): (A U.S. Army Corps of Engineers Engineering Research and Development Center Topographic Engineering Center Alexandria, Virginia Windows-based program to convert coordinates and elevations between datum's using vertcon05.txt and vertcon05.05 files supplied by the U.S. Army Corps of Engineers South Atlantic Division, Jacksonville FL.) ACTUAL NGS or (ngvd29.txt file) OPUS Ortho Height			
LATITUDE: 25 ° 56' 26.43 " (N)		LONGITUDE: 80 ° 09' 47.58" (W) (Source) GPS RTK (FPRN)	
RECOVERY DATA			
Stamping: G-3705 BEC 0129			
To Reach: STATION IS A MAG NAIL AND WASHER STAMPED "BEC 0129 AND G-3705" SET ON THE SW CORNER OF A CONCRETE SLAB OF A AT&T CABLE BOX. LOCATED: NE 19TH AVENUE --- 150' WEST OF CL., NE 179TH STREET --- 18' NORTH OF CL.			
NOTABLE LAND MARKS: GREYNOLDS GOLF COURSE			
MDC-SOURCE BENCHMARKS: N-743, N-3950			
FIELD BOOK PAGE _____ 2990-19			
PICTURES			
Aerial Overall Site			
<div style="display: flex; justify-content: space-around; align-items: center;"> <div style="border: 1px solid black; padding: 5px; text-align: center;"> <p>Benchmark "G-3705" El. 8.53' (NAVD88)</p> </div> <div style="border: 1px solid black; padding: 5px; text-align: center;"> <p>G-3705 Well Site Latitude: 25° 56' 26.40" Longitude: 80° 09' 47.45"</p> </div> </div>			
NOT TO SCALE (Google Earth product)			



SOUTH FLORIDA WATER MANAGEMENT DISTRICT

Rev. 4/18

Overall Site




Benchmark "G-3705"
El. 8.53' (NAVD88)

G-3705 Well Site
Latitude: 25° 56' 26.40"
Longitude: 80° 09' 47.45"
Reference elevation
7.53' (NAVD88)

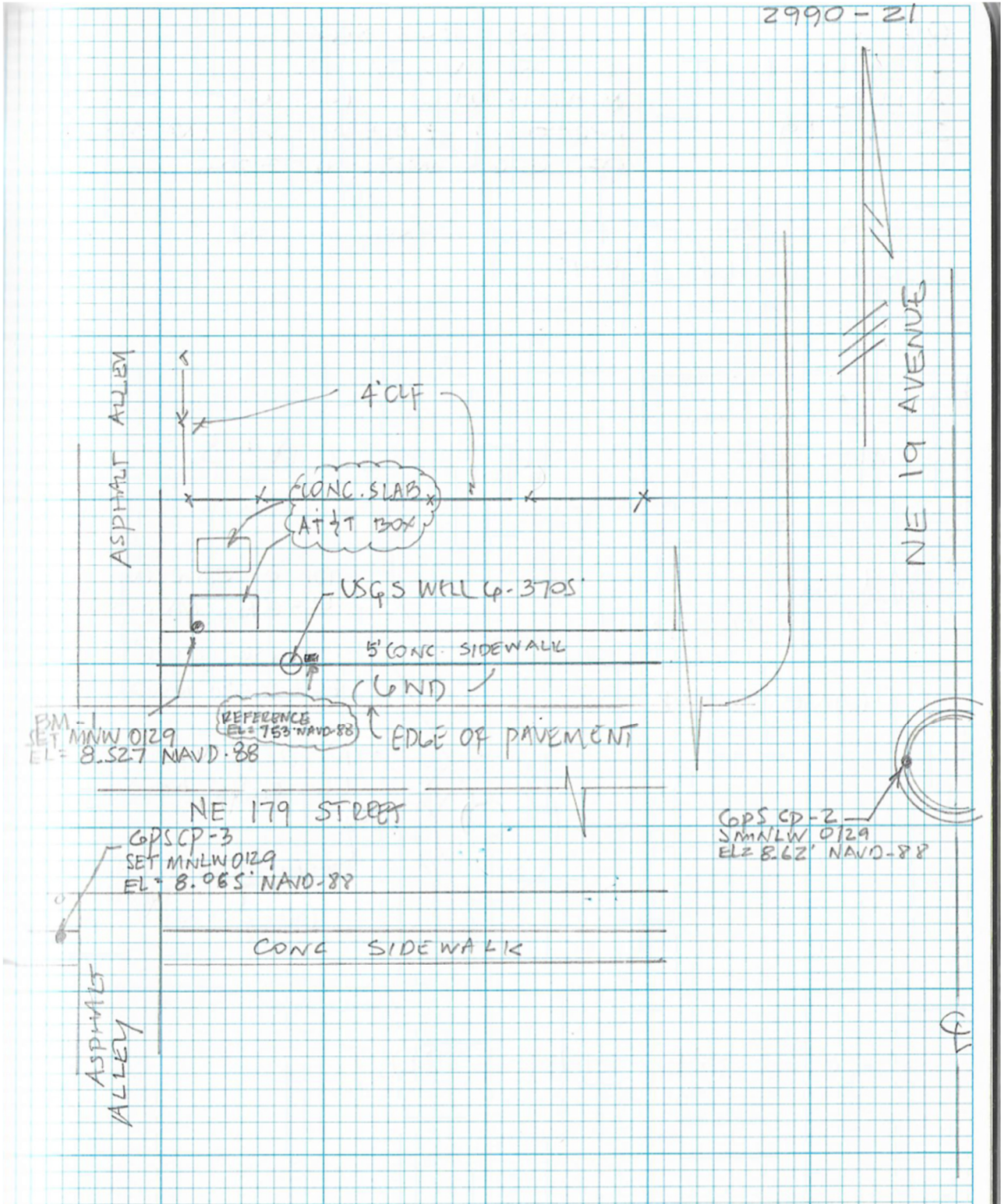
Looking Northerly (Oblique not to scale)



SOUTH FLORIDA WATER MANAGEMENT DISTRICT

Rev. 4/18

SKETCH



Office

Project

17 May 2019

INPUT

Geographic, NAD83
Vertical - NAVD88, U.S. Feet

OUTPUT

Geographic, NAD83
Vertical - NGVD29 (Vertcon94), U.S. Feet

BM G-3705

1/1

Latitude: 25 56 26.43
Longitude: 80 09 47.58
Elevation/Z: 8.527

Latitude: 25 56 26.43000
Longitude: 80 09 47.58000
Elevation/Z: 10.095

Remark:

Office

Project

17 May 2019

INPUT

Geographic, NAD83
Vertical - NAVD88, U.S. Feet

OUTPUT

Geographic, NAD83
Vertical - NGVD29 (Vertcon94), U.S. Feet

WELL G-3705

1/1

Latitude: 25 56 26.40
Longitude: 80 09 47.45
Elevation/Z: 7.53

Latitude: 25 56 26.40000
Longitude: 80 09 47.45000
Elevation/Z: 9.098

Remark:

O. LUNA
L. BALLESTEROS
A. LEAL
2-07-19

BCC #03-86445
S. F. W. M. D.
MIAMI DADE (26 WELLS)
LOCATION AND ELEVATION (NAVD-88) OF
USGS WELL G-3705

SET	BS	MEAN	HI	FS	MEAN
N-743	5.37 4.87 4.365	4.868	13.858		
TP N. 1				5.70 5.065 4.43	5.065
SHAKE	5.995 4.985 3.975	4.985	13.778		
TP N. 2				5.775 4.82 4.815 3.865	4.82
SHAKE	5.90 4.87 3.84	4.87	13.828		
TP N. 3				5.965 5.015 4.065	5.015
SHAKE	5.625 4.56 3.50	4.562	13.375		
TP N. 4				6.13 5.045 3.965	5.047

ELEVATION	BM ELEV	DESCRIPTION
	8.99	NE 179 ST. --- 66' SOUTH OF C/L NE 15 AVE --- 41' EAST OF C/L PKNL & WASHER IN CONC SWL, EL: 8.99' NAVD-88
8.793		SET CUT NL $\frac{1}{2}$ TT, SET ON ASPHALT PAV. 1' \pm SOUTH OF THE NORTH EP OF THE NE 179 ST., \pm 230' EAST OF THE E AC NE 15 AV.
8.958		SET CUT NL $\frac{1}{2}$ TT, 1' \pm SOUTH OF THE NORTH EP OF THE NE 179 ST, AND \pm 393' EAST OF THE TP N. 1
8.813		SET CUT NL $\frac{1}{2}$ TT SET \pm 1' SOUTH OF THE NORTH EP OF THE NE 179 ST, \pm 396' EAST OF THE TP N. 2
8.328		SET CUT NL $\frac{1}{2}$ TT, \pm 1' SOUTH OF THE NORTH EP OF THE NE 179 ST, AND \pm 429' EAST OF THE TP N. 3

O. LUNA
 L. BALLESTEROS
 A. LEAL
 2-07-19

BEL #03.86445
 S. F. W. M. D.
 MIAMI-DADE (26 WELLS)
 LOCATION AND ELEVATIONS (NAVD-88)
 OF USGS WELL G-3705

SET	BS	MEAN	HI	FS	MEAN
TP No. 4	5.805	4.765	13.093		
	4.765				
	3.725				
TP No. 5					4.872
SHAKE	5.645	4.592	12.813		
	4.59				
	3.54				
TP No. 6					4.84
SHAKE	5.36	4.93	12.903		
	4.93				
	4.50				
BM-1				4.80	
BM G-3705				4.375	4.377
				3.955	
SHAKE	4.90	4.472	12.998		
	4.47				
	4.045				
GPS CP-3					4.933

2990-19

ELEVATION	BM ELEV	DESCRIPTION
	8.328	
8.222		SET CONCL $\frac{1}{2}$ " \pm 1" SOUTH OF THE NORTH EP OF THE NE 179 ST AND 401.50' EAST OF THE TP No. 4
7.973		SET CONCL $\frac{1}{2}$ " \pm 1" SOUTH OF THE NORTH EP OF THE NE 179 ST AND 426.5' EAST OF THE TP No. 5
8.527		SET MINLW BEL 0129, IN THE SW CORNER OF A CONC. SLAB OF A AT&T CABLE BOX
8.065		SET MINLW BEL 0129 ON SOUTH CONCL. SIDEWALK OF THE NE 179 ST AND FRONT TO NE PROP. CORNER OF THE PROPERTY #1880 NE 179 ST

O. LUNA
L. BALLESTERO
A. LEAL

BCL #03-86445

S. F.W.M.D.
MIAMI-DADE (26 WALS)
LOCATION & ELEVATIONS OF
USGS WELL 3705

2-07-19

SET	BS	MEAN	HI	FS	MEAN
GPS CP#3	5.465 4.95 4.44	4.952	13.017		
GPS CP#2				4.90 4.395 3.895	4.397
SHAKE	5.71 4.68 3.65	4.68	13.30		
TP # 7				5.945 4.805 3.665	4.805
SHAKE	5.870 4.870 3.870	4.870	13.365		
TP No 8				5.145 4.190 5.240 3.24	4.192
SHAKE	6.61 5.37 4.13	5.37	14.543		
N-3950				5.765 4.32 2.87	4.318

2990-20

STATION	BM ELEV.	DESCRIPTION
	8.065	
8.62	5.2	SET MNLW BCL 0129, ON WEST CONC. CURB OF THE ROUNDABOUT, LOCATED IN THE INTERSECTION NE 179 ST & NW 19 AVE.
8.495		SET CUT NL & TT, ±1' WEST OF THE EAST FRONT SIDEWALK, ON ASPHALT DRIVEWAY ± 245' NORTH OF THE NE 180 ST
9.173		SET CUT NL & TT, ON ASPHALT PARKING SPACES ± 1' WEST OF THE EAST FRONT SWK. FRONT LOCAL # 1845 (RESTAURANT)
10.225	10.22	NE 183 ST... 50' NORTH OF C/L NE 19 AVE... 35' EAST OF NORTHBOUND LANE TURN & ALUM. WASHER IN CONC. FRONT OF TRAFFIC SIGNAL POLE, EL = 10.22 NAVD-88
10.005		

SEC
TWP
RGE

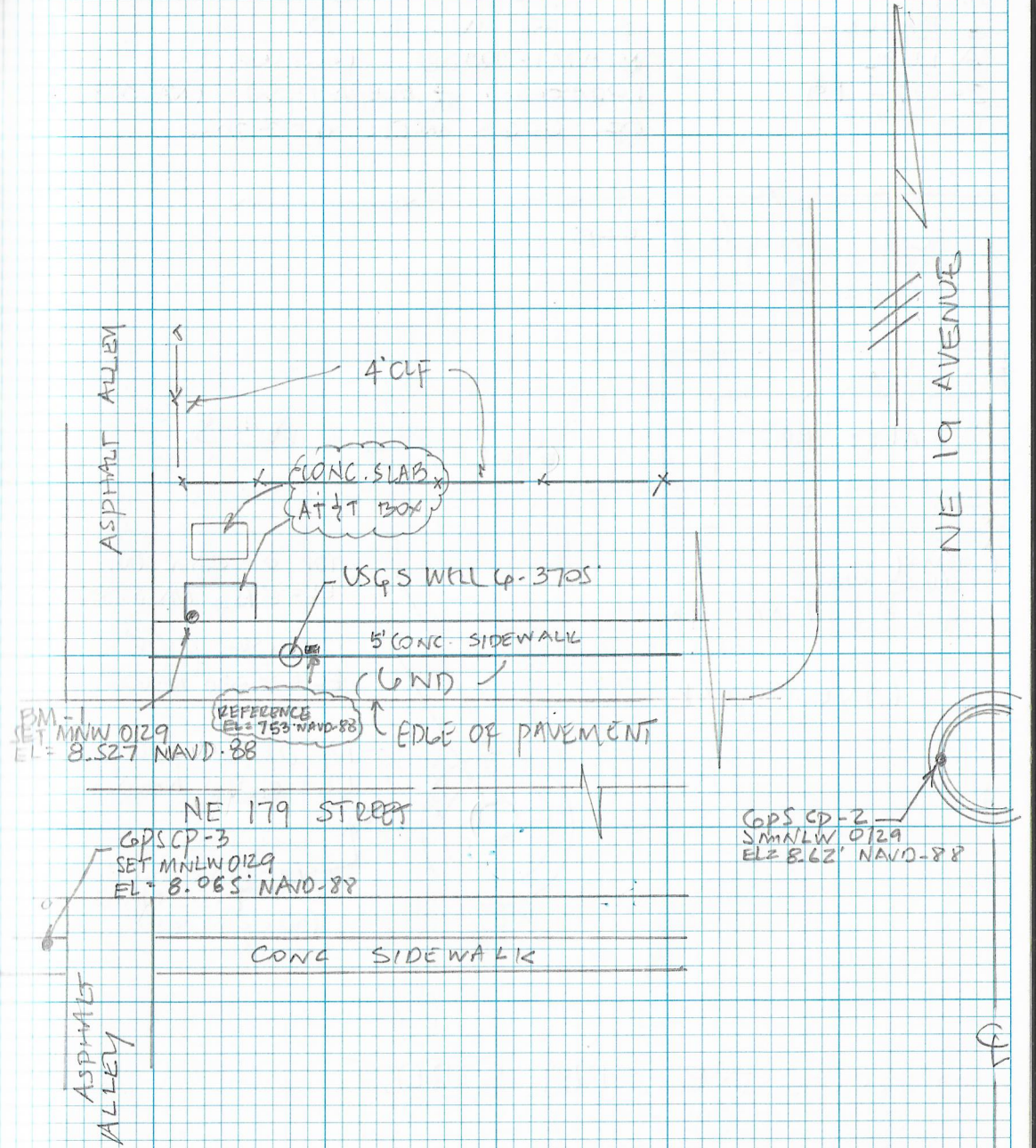
O. LUNA
L. BALLESTEROS
A. LEAL
2-07-19

BER #03-86445
S. F. W. M. D.
MIAMI-DADE (26 WELLS)
LOCATION & ELEVATIONS (NAVD-88)
OF USGS WELL G-3705.

INST @ GPS CP #3
HA = 5.21

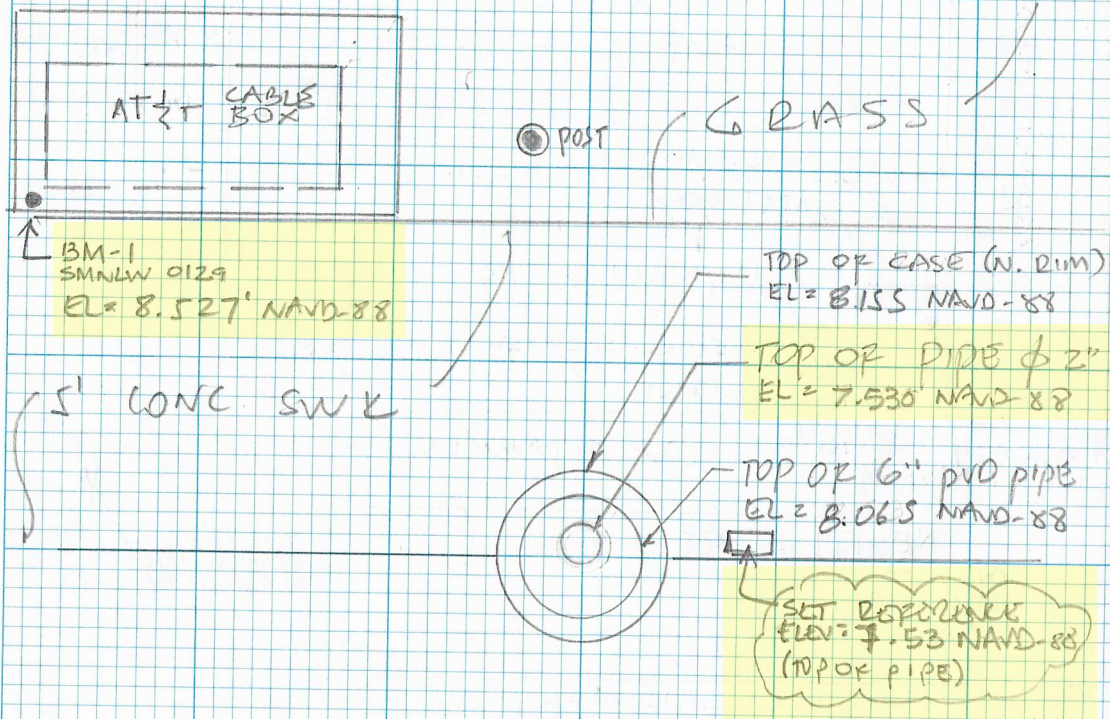
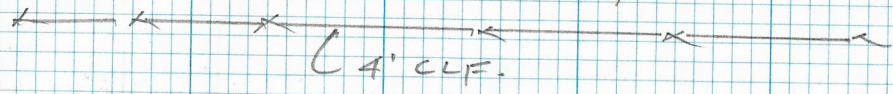
STA	ZH	HORIZ \angle	VERT \angle	SLOPE	DIST	DESC.
102 = 2	4.45	00°00'00"	90°03'36"		202.28'	SMNW 0129
101 = 1	4.73	311°23'27"	90°00'36"		43.69	BM-1 SMNW 0129

2990-21



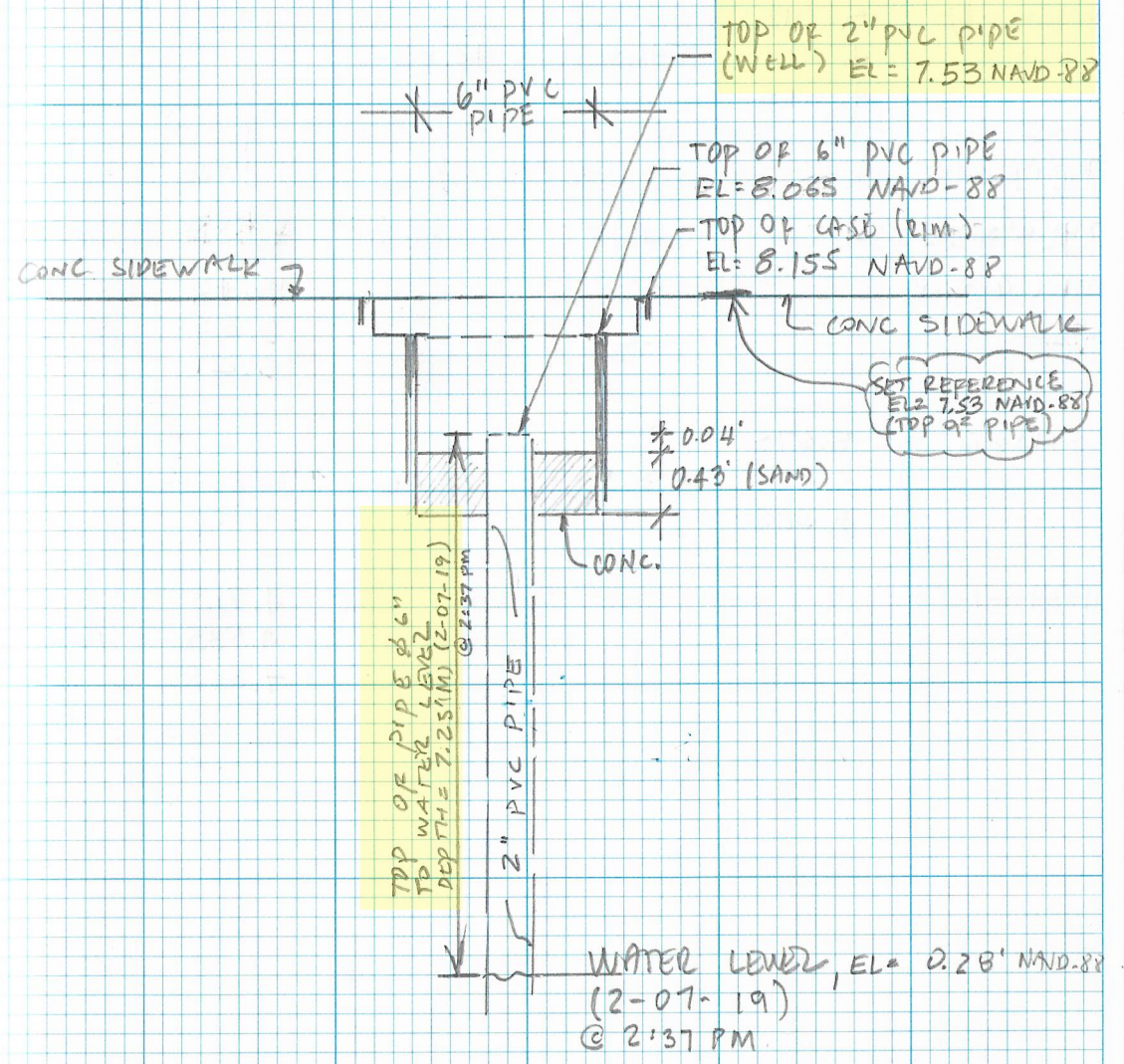
O. LUNA
 L. BALLESTEROS
 A. LEAL
 2-07-19

BER #03-86445
 S. F. W. M. D.
 MIAMI-DADE (26 WELLS)
 LOCATION & ELEVATION (NAVD-88)
 OF USGS WELL 4-3705



NE 179 STREET

USGS WELL 4-3705
 PROFILE VIEW
 (LOOKING NORTH)



O. LUNA
L. BALLESTEROS
A. LEAL
Z-07-19

BEL #03-86445
S. F. W. M. D.
MIAMI-DADE (26 WELLS)
LOCATION AND ELEVATION (NAVD-88)
OF USGS WELL G-3705

SET	BS	MEAN	HI	FS	MEAN
GPS - CP#3	5.015 4.815 4.615	4.815	12.88		
4ND (S)				4.80	
TOP OF CASE				4.725	
TOP OF PIPE				4.815	
WELL G-3705				5.49 5.35 5.21	5.35
WELL					
SHAKE	5.675 5.53 5.385	5.53	13.06		
BM -1				4.715 4.535 4.355	4.535

ELEVATION	BM ELEV	DESCRIPTION
	8.065	SET MNLW BEL 0129, ELEV 8.065 NAVD-88 SEE PAGE N. 19
8.08		SOUTH SIDE OF THE WELL
8.155		TOP OF NORTH RIM. (CASE)
8.065		TOP OF 6" PVC PIPE (NORTH RIM)
7.53		TOP OF PVC PIPE 2" (NORTH RIM) (WELL G-3705)
8.525	8.527	SET MNLW BEL 0129, ELE 8.527 NAVD-88 SEE PAGE 19
MNLW = -0.002		

Survey Control Points

Horizontal



N-743 - NEW

Name: N-743

Elev(NGVD29): 10.56
 Elev(NAVD88): 8.99
 Northing: 584,797.64
 Easting: 928,763.32



Public Works Survey Control Point

Welcome to Miami-Dade County Survey Control Points.

Location1: NE 179 ST --- 66' SOUTH OF C/L

Location2: NE 15 AVE --- 41' EAST OF C/L

Location3:

Description1: PK NAIL AND BRASS WASHER IN CONCRETE SIDEWALK.

Description2:

Field Book: 601-27
 Zones: III-B
 Circuit:
 Set Date: 01-01-2001
 Locator: 2252 SW
 Last Check: 10-02-2009
 Adjustment:
 Adjustment-Date: 03-24-2010
 Status: NEW

Public Works Survey Control Points is an Web Application that displays the Horizontal and Vertical Control Points layers as well as street maintenance layer and Municipality for Miami-Dade County. It is being used by Public Works Department in Miami-Dade County.

The information available in this search has been assembled for the use of Miami-Dade County Public Works for the design and development of Public Works projects. No degree or order of accuracy has been assigned to data in this package unless specifically stated.

Although this package has been prepared from the best available information, Miami-Dade County assumes no responsibility for the accuracy or completeness of the information or any errors or omission and makes no warranties, expressed or implied, concerning accuracy, completeness, reliability or suitability of this data.

This data should not be relied upon as the sole basis for solving a problem whose incorrect solution could result in injury to person or property. Elevations must be verified consistent with procedures established by Chapter 472 Florida Statutes "Land Surveying and Mapping" and the Florida Administrative Code Chapter 61G17-6 "Minimum Technical Standards".

Some of the GIS datasets presented in this website are available for free download. Please visit our [Open Data](#) website for more information.

For questions, comments or to report a problem with this website, please email [Miami-Dade County GIS](#).

[Zoom to](#)



Survey Control Points

Horizontal



+ Find address or place About

- N-3950 - CHANGED

Name: N-3950
Elev(NGVD29): 11.78
Elev(NAVD88): 10.22
Northing: 586,354.70
Easting: 931,336.56

Location1: NE 183 ST --- 50' NORTH OF C/L
Location2: NE 19 AVE --- 35' EAST OF NORTH BOUND LANE
Location3:
Description1: PK NAIL AND ALUMINUM WASHER IN CONC IN FRONT OF TRAFFIC SIGNAL POLE
Description2:

Field Book: 610-16
Zones:
Circuit:
Set Date: 09-08-2008
Locator: 2244
Last Check: 09-08-2008
Adjustment:
Adjustment-Date: 03-24-2010
Status: CHANGED



Public Works Survey Control Point

Welcome to Miami-Dade County Survey Control Points.

Public Works Survey Control Points is an Web Application that displays the Horizontal and Vertical Control Points layers as well as street maintenance layer and Municipality for Miami-Dade County. It is being used by Public Works Department in Miami-Dade County.

The information available in this search has been assembled for the use of Miami-Dade County Public Works for the design and development of Public Works projects. No degree or order of accuracy has been assigned to data in this package unless specifically stated.

Although this package has been prepared from the best available information, Miami-Dade County assumes no responsibility for the accuracy or completeness of the information or any errors or omission, and makes no warranties, expressed or implied, concerning accuracy, completeness, reliability or suitability of this data.

This data should not be relied upon as the sole basis for solving a problem whose incorrect solution could result in injury to person or property. Elevations must be verified consistent with procedures established by Chapter 472 Florida Statutes "Land Surveying and Mapping" and the Florida Administrative Code Chapter 61G17-6 "Minimum Technical Standards".

Some of the GIS datasets presented in this website are available for free download. Please visit our [Open Data](#) website for more information.

For questions, comments or to report a problem with this website, please email [Miami-Dade County GIS](#).

[Zoom to](#)

