



# RMBAKER LLC

WELL GL-332  
UWI GL-332

Geology and Geophysics

8600 Oldbridge Lane  
Orlando, FL 32819  
mobile ph 407-733-8958

LOG STAGE EXPLORATORY

rob@rmbaker.com  
www.rmbaker.com

HEADER NOTES:  
CASING SCREEN FROM 120.8 FT TO 125.3 FT

COMP RMBAKER LLC  
LOC GLADES COUNTY  
FLD GLADES COUNTY  
CNTY GLADES  
STAT FL  
PROV FL  
CTRY USA

LATI 26.819900 X  
LONG -81.046180 Y  
GDAT WGS84 HDAT  
SEC ELEV  
TWP V DAT  
RGE

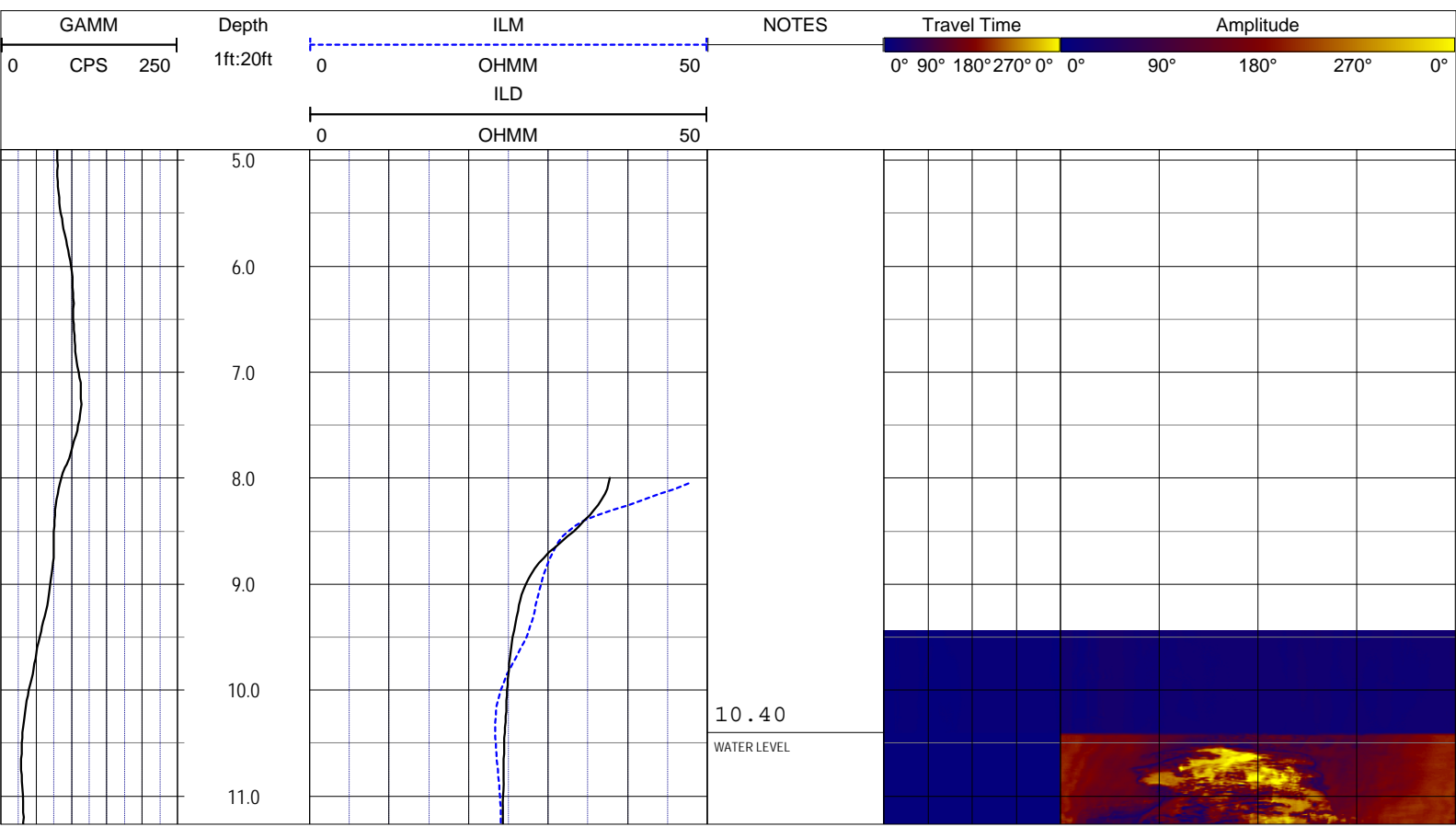
ALL SERVICES:  
DUAL INDUCTION  
NATURAL GAMMA  
ACOUSTIC TELEVIEWER  
VIDEO

PERMANENT DATUM:  
LOG MEASURED FROM: GROUND SURFACE

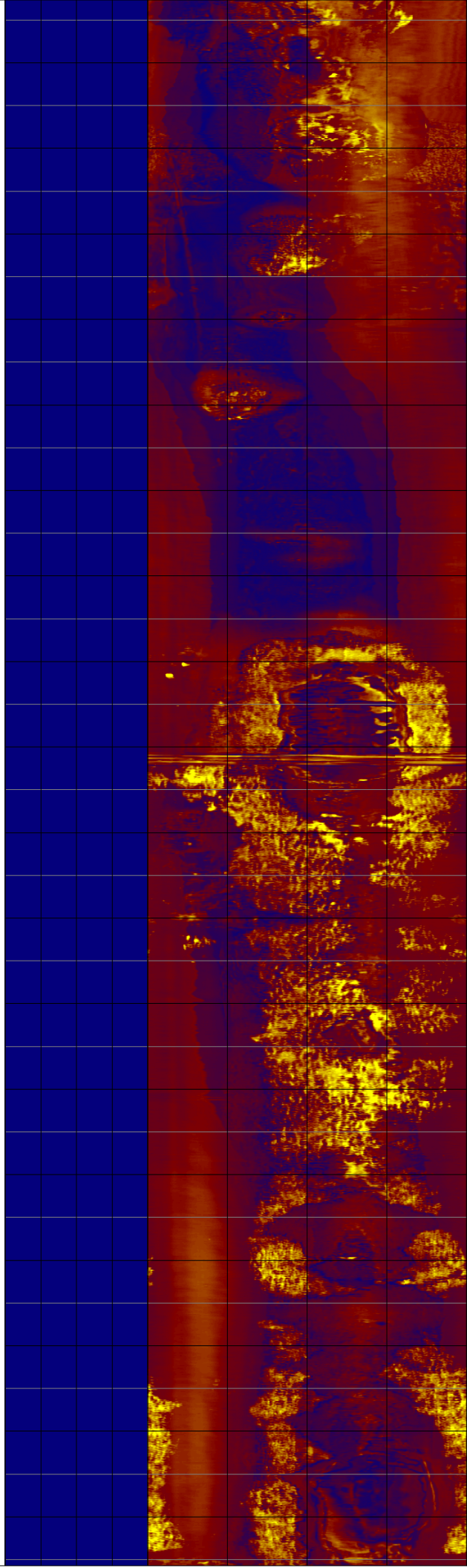
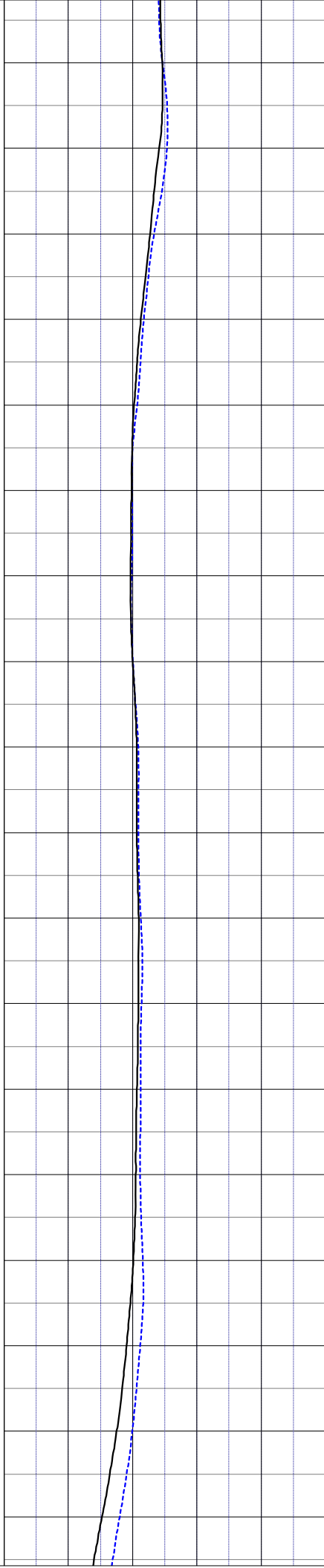
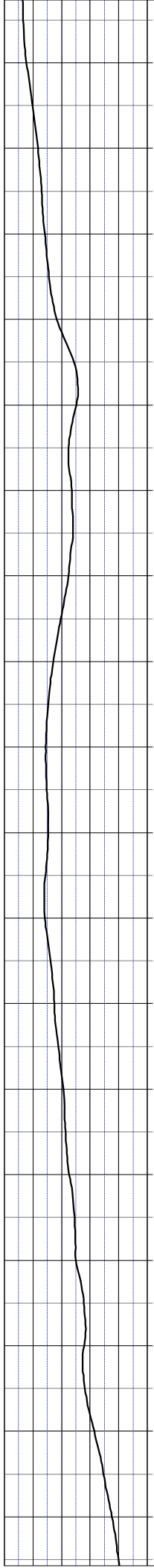
DRILLING MEASURED FROM:

DATE	15 Jul 14	TYPE FLUID IN HOLE	WATER
RUN No	1	LOGGING SPEED (FT/MIN)	20
TYPE LOG	COMPOSITE	TROLLING DIRECTION	UP
DEPTH-DRILLER		PUMPING RATE (GPM)	
DEPTH-LOGGER	130.7		
DRILLER			
RECORDED BY	RMB		
SRVC	RMBAKER LLC	API	N/A
WITNESSED BY	K. SMITH	LIC	N/A

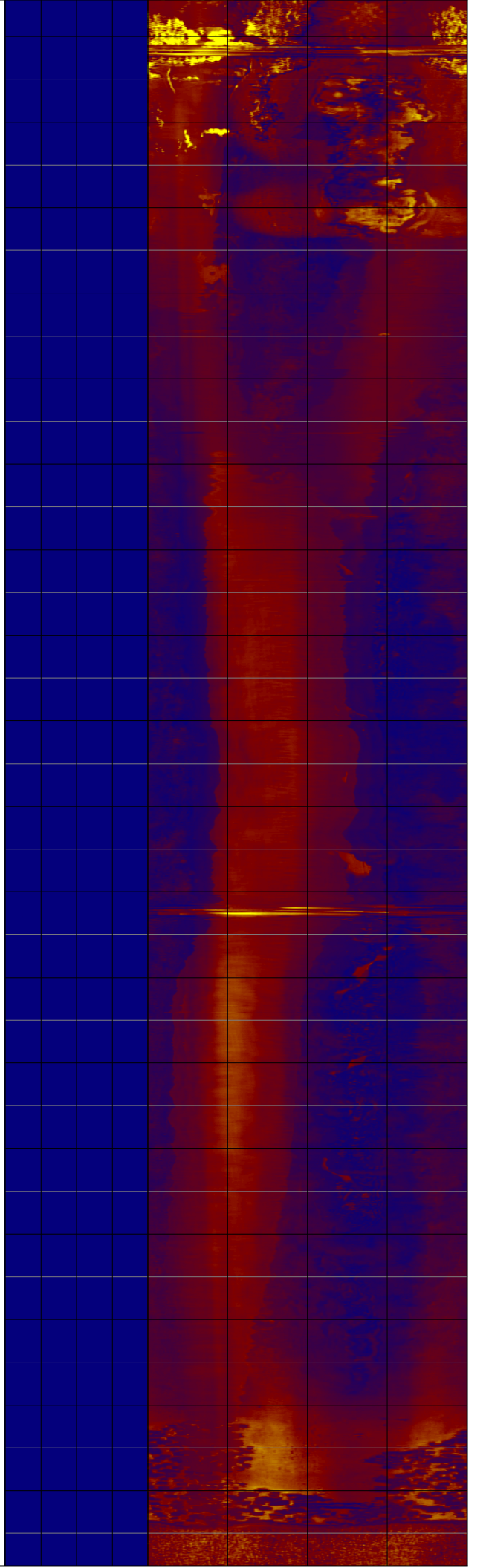
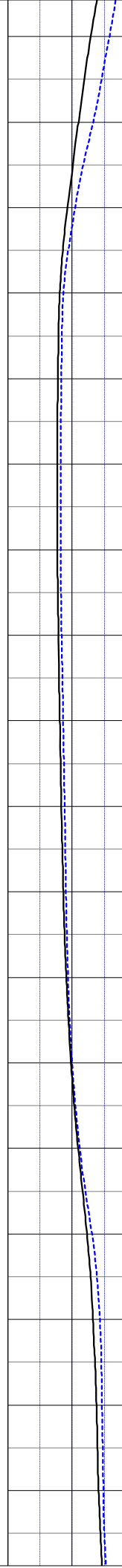
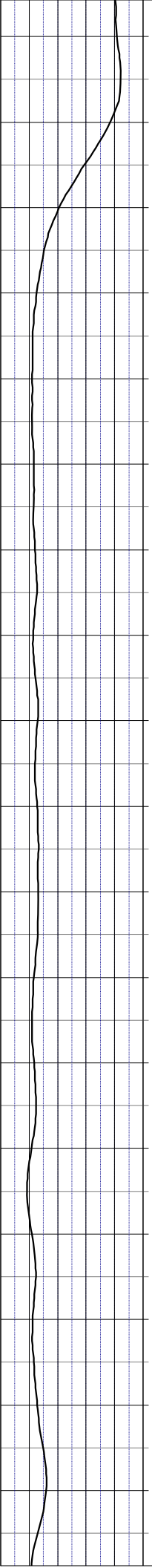
BOREHOLE RECORD			CASING RECORD			
RUN NO.	BIT FROM	TO	SIZE	MAT.	FROM	TO
			2	PVC	0	130.7

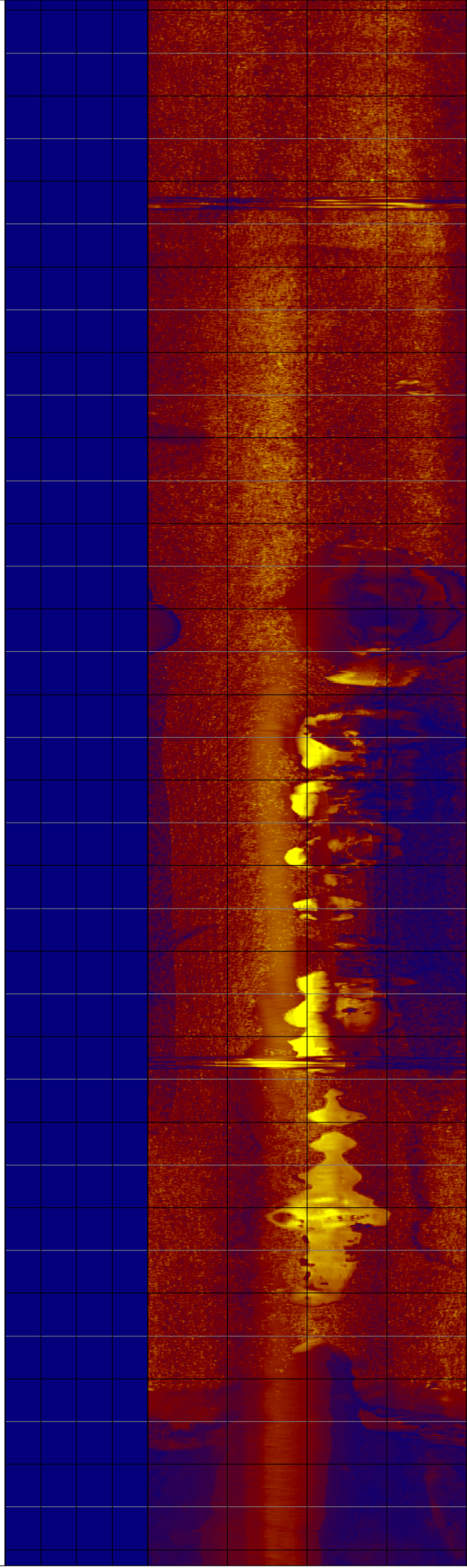
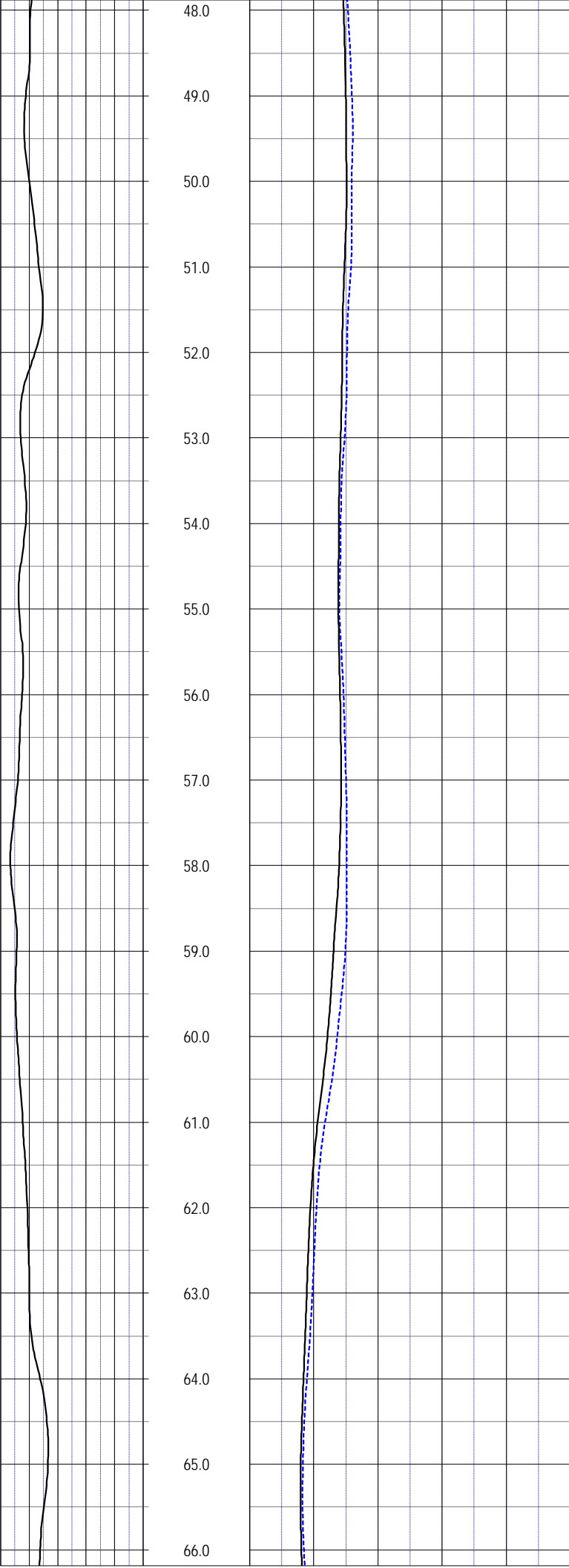


12.0  
13.0  
14.0  
15.0  
16.0  
17.0  
18.0  
19.0  
20.0  
21.0  
22.0  
23.0  
24.0  
25.0  
26.0  
27.0  
28.0  
29.0

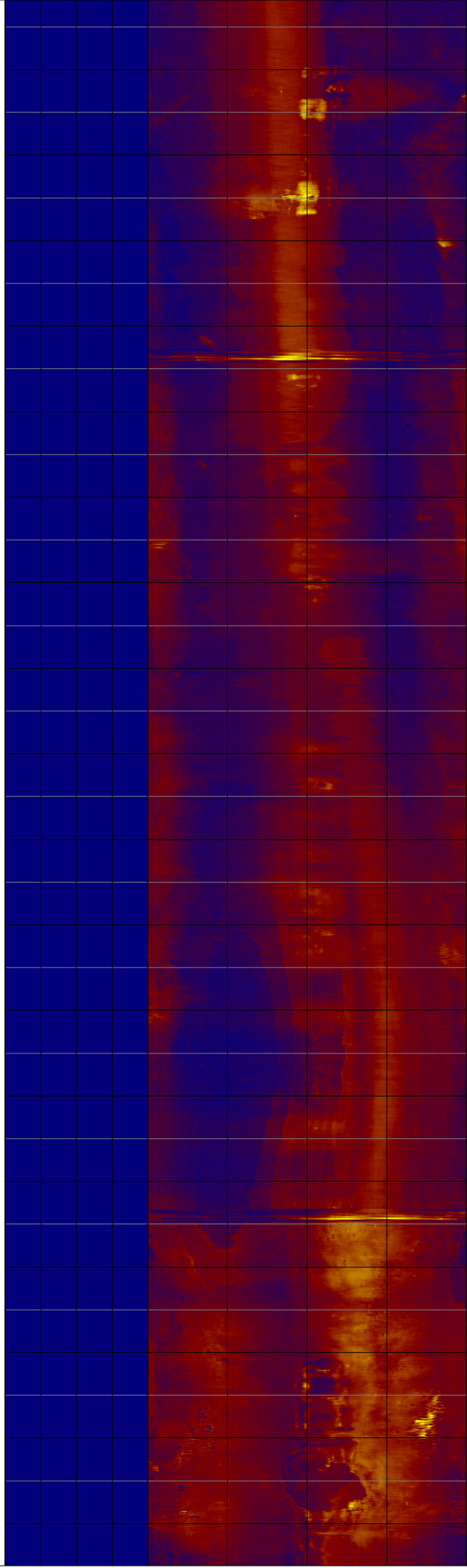
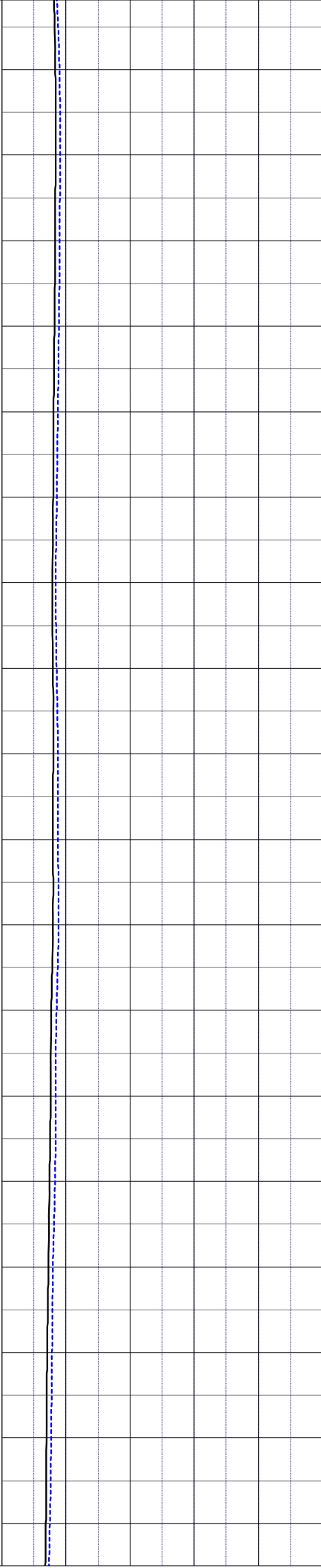
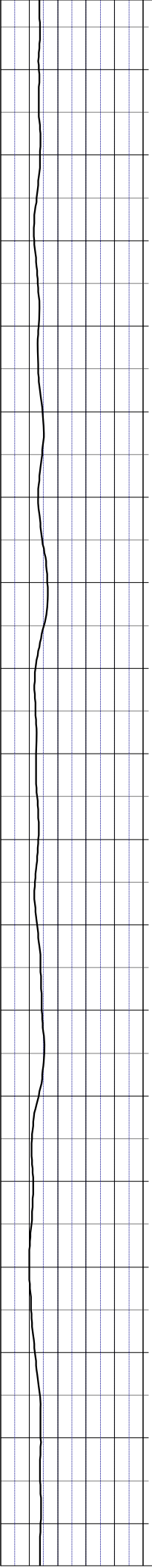


30.0  
31.0  
32.0  
33.0  
34.0  
35.0  
36.0  
37.0  
38.0  
39.0  
40.0  
41.0  
42.0  
43.0  
44.0  
45.0  
46.0  
47.0

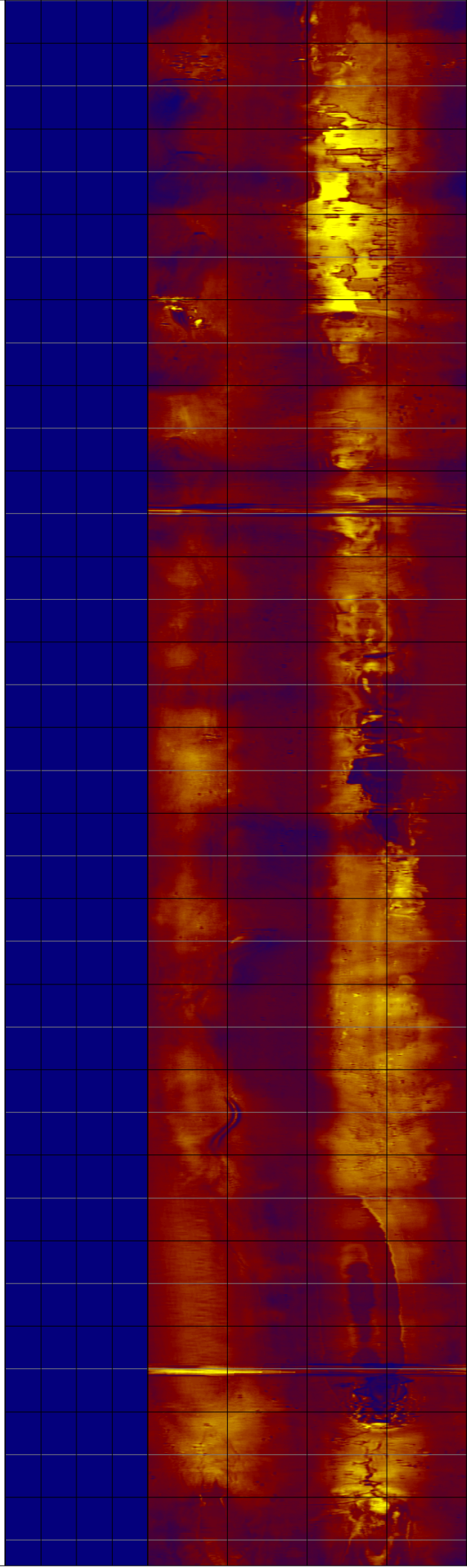
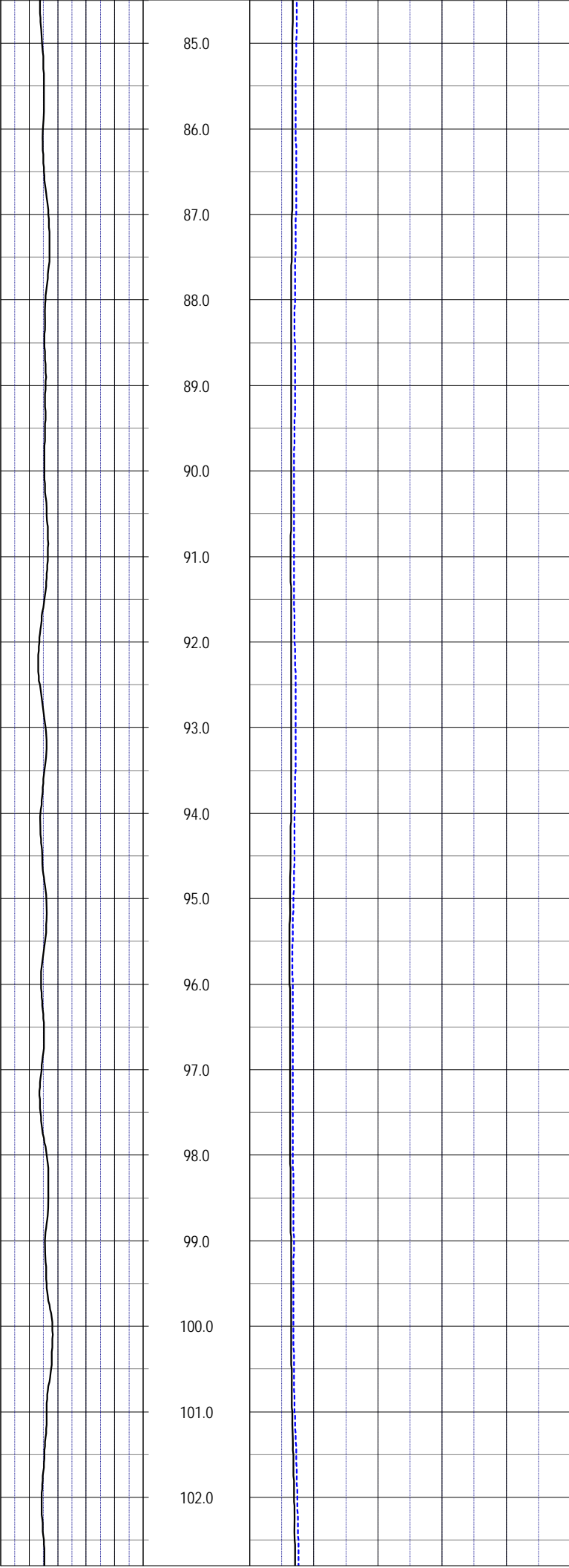


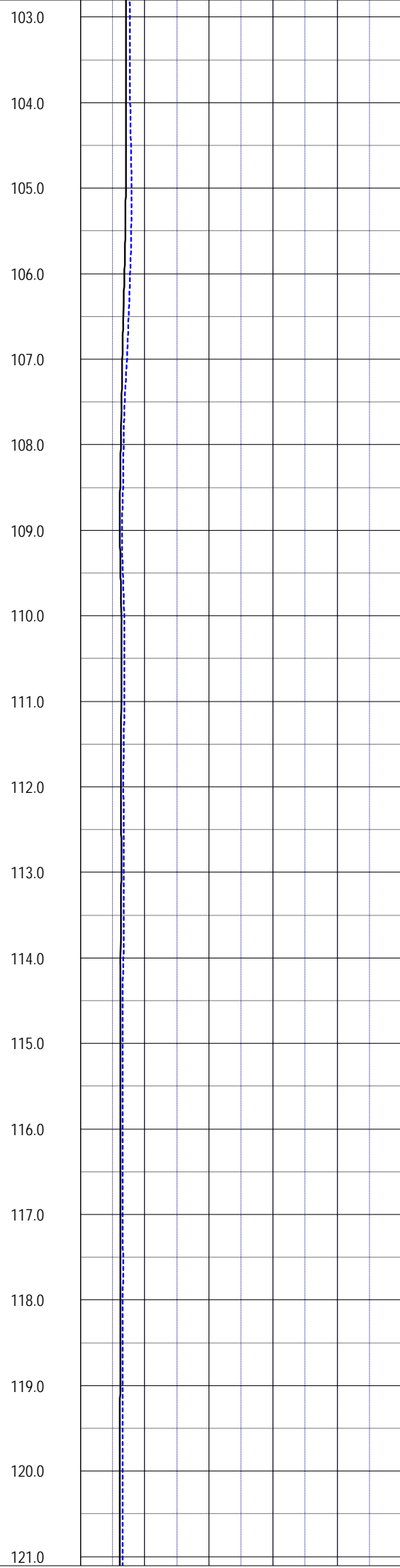
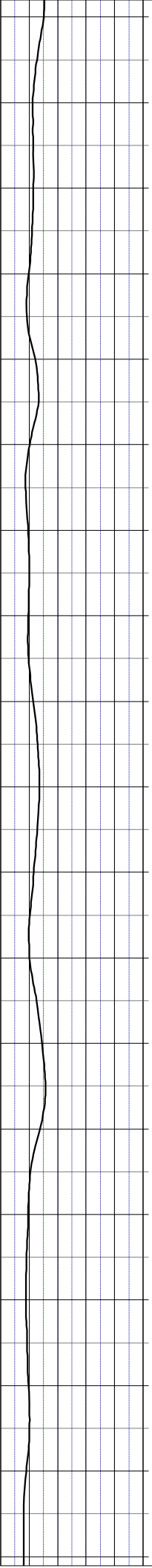


67.0  
68.0  
69.0  
70.0  
71.0  
72.0  
73.0  
74.0  
75.0  
76.0  
77.0  
78.0  
79.0  
80.0  
81.0  
82.0  
83.0  
84.0

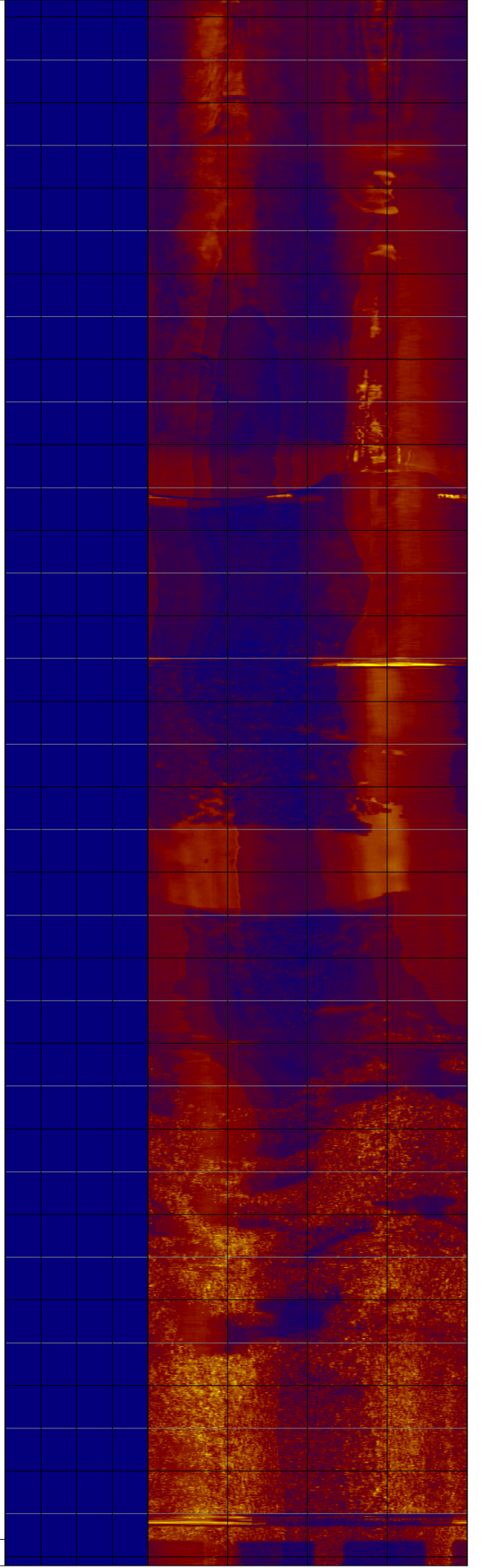


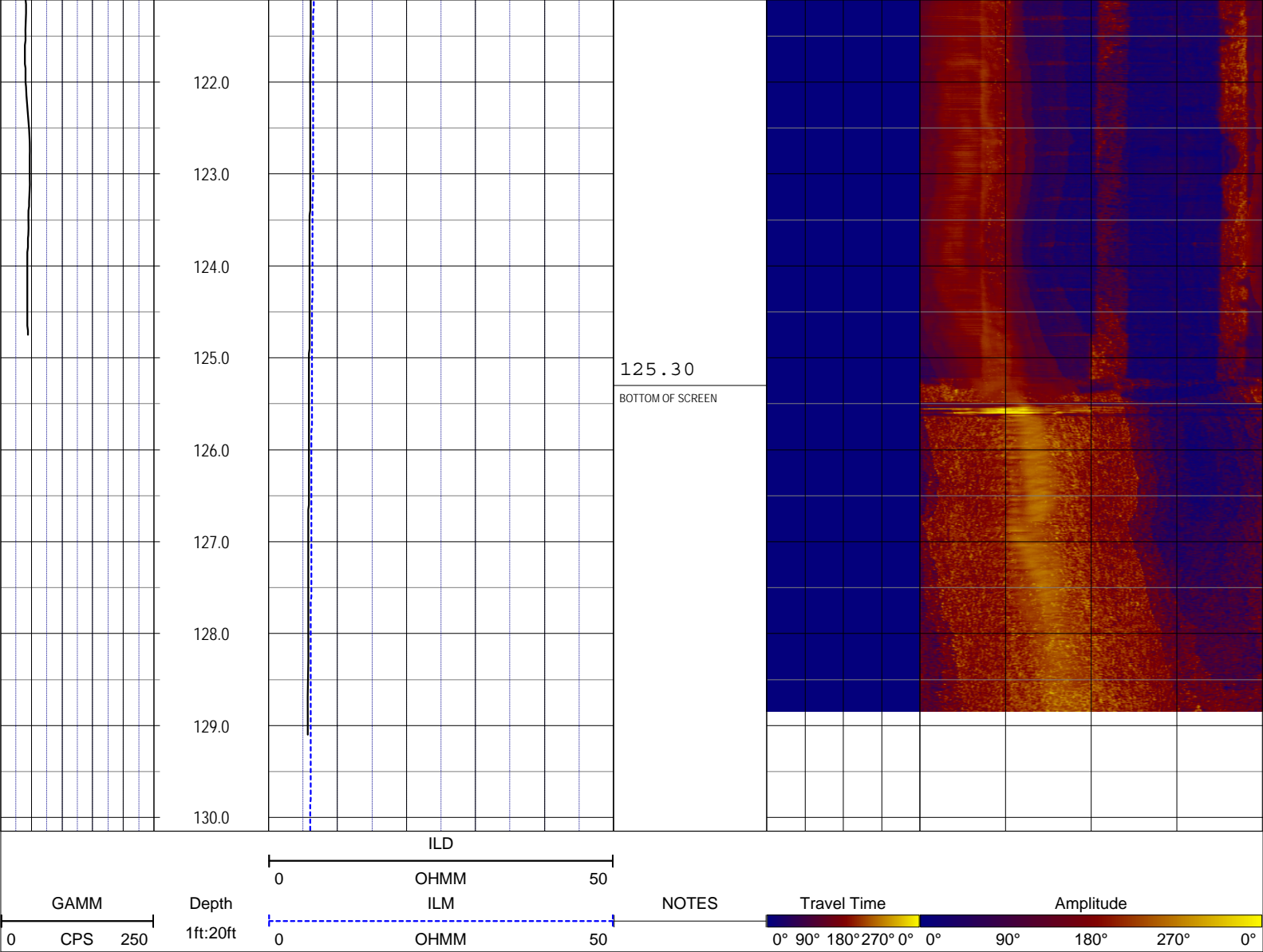
85.0  
86.0  
87.0  
88.0  
89.0  
90.0  
91.0  
92.0  
93.0  
94.0  
95.0  
96.0  
97.0  
98.0  
99.0  
100.0  
101.0  
102.0





120.80  
TOP OF SCREEN





**NOTES:**  
 While due care has been exercised in the performance of these measurements and observations, in accordance with methodologies utilized by the general practitioner, RMBAKER LLC can make no representations, warranties, or guarantees with respect to latent or concealed conditions that may exist, which may be beyond the detection capabilities of the methodologies used, or that may extend beyond the areas and depths surveyed.  
 The geophysical well logs show subsurface conditions as they existed at the dates and locations shown, and it is not warranted that they are representative of subsurface conditions at other locations and times.  
 If, at any time, different subsurface conditions from those observed are determined to be present, we must be advised and allowed to review and revise our observations if necessary.

Certificate of Authorization GB 458

END OF LOG