

1147

Schilling

FD-CNL-GR

Field log



COMPANY:	EXXON COMPANY USA	OTHER SERVICES:	FD-CNL-GR
WELL:	TURNER 820-4	DIL:	
FIELD:	HES FLD 8A	FLUID LOSS:	
COUNTRY:	FLORIDA	LOGGING UNIT NO:	8193
STATE:	HENRY	LOGGING UNIT LOC:	FT MYERS
LOCALITY:	FLORENZA	RECORDED BY:	ZUCHEL
LOCATION:	SEC 20 TWP 14S RGE 88E	WITNESSED BY:	
DATE:	04/09/10	REMARKS:	
TIME:	15:30	MATRIX LIME: MAT DEN=2.71	
		RAN 80M SPRING; LONG CALIPER ARM; & 2-1.5	
		INCH STAND OFFS ON DIL	
		NO REPEAT DUE TO HOLE CONDITIONS	

TYPE FLUID IN HOLE: SPUD MUD
 DENSITY: 9.0 LB/G
 VISCOSITY: 45.0 S
 PH:
 FLUID LOSS:
 SOURCE OF SAMPLE: FLOWLINE
 RM: 5.110 DHMM AT 75.0 DEGF
 RHF: 5.880 DHMM AT 75.0 DEGF
 RMC: 8.200 DHMM AT 75.0 DEGF
 SOURCE RM/RMC: MEASURE MEASURE
 RM AT BHT: 4.513 DHMM AT 104. DEGF
 RHF AT BHT: 4.343 DHMM AT 104. DEGF
 RMC AT BHT: 6.057 DHMM AT 104. DEGF
 TIME CIRC. STOPPED: 1200
 TIME LOGGER ON BTH: 1900
 MAX. REC. TEMP: 104.0 DEGF
 LOGGING UNIT NO: 8193
 LOGGING UNIT LOC: FT MYERS
 RECORDED BY: ZUCHEL
 WITNESSED BY:

REMARKS:
 MATRIX LIME: MAT DEN=2.71
 RAN 80M SPRING; LONG CALIPER ARM; & 2-1.5
 INCH STAND OFFS ON DIL
 NO REPEAT DUE TO HOLE CONDITIONS

EQUIPMENT NUMBERS-			
PGB 83	PBM 405	PGC 416	SGT 1288
NLM 65	GSR 3345	CHC 656	MSR A0501
DIS 504	DIC 1123	ICM 1145	

ALL INTERPRETATIONS ARE OPINIONS BASED ON INFERENCE FROM ELECTRICAL OR OTHER MEASUREMENTS AND WE CANNOT AND DO NOT GUARANTEE THE ACCURACY OR CORRECTNESS OF ANY INTERPRETATIONS, AND WE SHALL NOT, EXCEPT IN THE CASE OF GROSS OR WILLFUL NEGLIGENCE ON OUR PART, BE LIABLE OR RESPONSIBLE FOR ANY LOSS, COSTS, DAMAGES OR EXPENSES INCURRED OR SUSTAINED BY ANYONE RESULTING FROM ANY INTERPRETATION MADE BY ANY OF OUR OFFICERS, AGENTS OR EMPLOYEES. THESE INTERPRETATIONS ARE ALSO SUBJECT TO OUR GENERAL TERMS AND CONDITIONS AS SET OUT IN OUR CURRENT PRICE SCHEDULE.

FILE 10

FILE 10

FILE 10

AFTER SURVEY TOOL CHECK SUMMARY

PERFORMED: 04/09/10
 PROGRAM FILE: ISN (VERSION 24.2 35/01/35)

CNTA TOOL CHECK

BEFORE JIG AFTER
 NRAT 2.207 2.210

POROSITY CHANGE (LIME): 0.001

PGTK TOOL CHECK

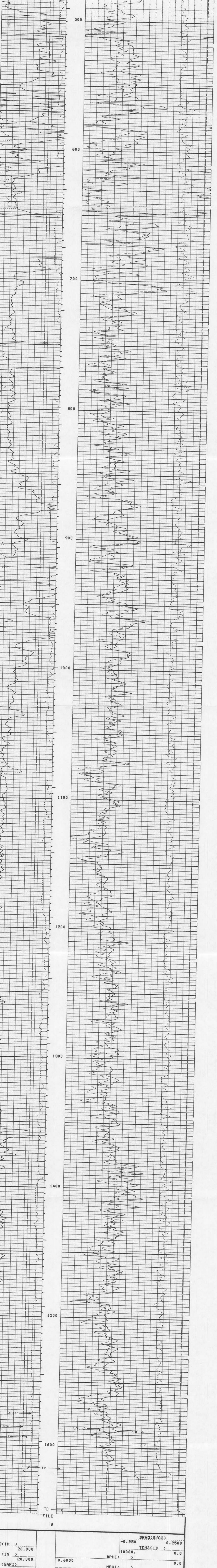
BEFORE JIG AFTER UNITS
 FFDC 331 333 CPS
 NFDC 818 819 CPS

RHOB CHANGE (WATER): -0.002 G/CC

FILE 10

CAL (IN)	20.000	DRHO(G/CC)	0.2500
BS (IN)	20.000	TENS(LB)	0.0
GR (GAPI)	0.6000	DPHI()	0.0
	0.6000	NPHI()	0.0

FILE 8



CAL (IN)	20.000	DRHO(G/CC)	0.2500
BS (IN)	20.000	TENS(LB)	0.0
GR (GAPI)	0.6000	DPHI()	0.0
	0.6000	NPHI()	0.0

SENSOR MEASURE POINT TO TENSION REFERENCE POINT

NCNL 44.4 FEET	GR 52.9 FEET
FFCD 29.1 FEET	FCNL 44.4 FEET
CAL 29.1 FEET	NFCD 29.1 FEET
SFL 3.9 FEET	ILD 6.9 FEET
SF 0 FEET	ILM 3.3 FEET
TENS 0 FEET	SPAR 0 FEET
NRAT 44.4 FEET	

PARAMETERS

NAME	VALUE	UNIT	NAME	VALUE	UNIT
PSNR	2.32800		BS	17.3000	IN
MATR	LIME		HC	CAL	
MDEN	2.21000	G/CC	FD	1.00000	G/CC
BHF	HATE		FDCC	ALLD	
SBR	1.00000	DHMM	BSEC	6.90000	MHMD
FFMI	PHIX	F	MSEC	6.00000	MHMD
DD	0.0		BHS	OPEN	
PP	RECD				

TAPE NOT MADE

BEFORE SURVEY CALIBRATION SUMMARY

PERFORMED: 04/09/10
 PROGRAM FILE: ISN (VERSION 24.2 35/01/35)

DITD ELECTRONICS CALIBRATION SUMMARY

ILM	MEASURED		CALIBRATED		UNITS
	ZERO	PLUS	ZERO	PLUS	
ILM	0.0	492.8	0.0	499.8	MHMD
SFL	-0.0	520.4	0.0	500.0	MHMD
SFL	-0.1	523.5	0.0	500.0	MHMD

ILM SONDE ERROR CORRECTION: 6.9 MHMD
 ILM SONDE ERROR CORRECTION: 6.0 MHMD

SGTE DETECTOR CALIBRATION SUMMARY

GR	MEASURED		CALIBRATED		UNITS
	BKGD	JIG	BKGD	JIG	
GR	53	267	165		GAPI

CNTA DETECTOR CALIBRATION SUMMARY

NRAT	TANK		JIG		UNITS
	MEASURED	CALIBRATED	MEASURED	CALIBRATED	
NRAT	2.328	2.158	2.378	2.204	

SHOP SUMMARY (CNC1652, CNB1301)

PERFORMED: 04/08/07
 PROGRAM FILE: SHOP (VERSION 20.2 93/64/58)

CNTA DETECTOR CALIBRATION SUMMARY

NRAT	TANK		JIG		UNITS
	MEASURED	CALIBRATED	MEASURED	CALIBRATED	
NRAT	2.328	2.158	2.378	2.204	

SHOP SUMMARY (CNC1652, CNB1301)

PERFORMED: 04/08/07
 PROGRAM FILE: SHOP (VERSION 20.2 93/64/58)

PGTK DETECTOR CALIBRATION SUMMARY

FFDC	BLOCK		JIG		UNITS
	MEASURED	CALIBRATED	MEASURED	CALIBRATED	
FFDC	463	337	435	316	CPS
NFDC	785	528	772	518	CPS

(PGS183, PDH1405, GSR13345, GCBC1GCBC)

FLORIDA GEOLOGICAL SURVEY
 FT. MYERS, FLORIDA 33901



COMPANY: EXXON COMPANY USA
 WELL: TURNER #20-4
 FIELD: WEST FELDA
 COUNTY: WEST FLORIDA
 STATE: FLORIDA
 LOCATION: GGD 'E' L, 20132, FEL
 SEC: 20
 TWP: 4SS
 RGE: 28E
 PERMITS: 8013825 (S/M/S/S/S/S)
 ELEVATIONS:
 ELEV. OF PERM. DATUM: GL
 LOG MEASURED FROM: RKB
 DRG. MEASURED FROM: RKB
 DATE: 10 SEP 84
 RUN NO: 1
 DEPTH-DRILLER: 1650.0
 DEPTH-LOGGER: 1649.0
 RIM LOG INTERVAL: 1643.0
 TOP LOG INTERVAL: 1630.0
 CASING-DRILLER: 220
 CASING-LOGGER: 219
 BIT SIZE: 17.5
 DEPTH: 1650

HE-1106
 5"

OTHER SERVICES-
 FDC-CL-GR

PROGRAM
 TAPE NO:
 SEC. I.E.
 DRDRR NO:
 391773

TYPE FLUID IN HOLE: SPUD MUD
 DENSITY: 9.0 LB/G
 VISCOSITY: 45.0 S
 FLUID LOSS: FLOWLINE
 SOURCE OF SAMPLE: RM: 6.110 DHMM AT 75.0 DEGF
 RMF: 5.880 DHMM AT 75.0 DEGF
 RMC: 8.200 DHMM AT 75.0 DEGF
 SOURCE RMF/RMC: MEASURE / MEASURE
 RM AT BHT: 4.513 DHMM AT 104. DEGF
 RMF AT BHT: 4.343 DHMM AT 104. DEGF
 RMC AT BHT: 6.057 DHMM AT 104. DEGF
 TIME CIRC. STOPPED: 1200
 TIME LOGGER ON BTM.: 1900
 MAX. REC. TEMP: 104.0 DEGF
 LOGGING UNIT NO: 8193
 LOGGING UNIT LOC: FT MYERS
 RECORDED BY: BUCHEL
 WITNESSED BY:

REMARKS:
 MATRIX= LIME, MAT DEN=2.71
 PAN BOW SPRING, LONG CALIPER ARM, & 2-1.5
 INCH STAND OFFS ON DIL
 NO REPEAT RIG TO UNL'S POSITIONING

PARAMETERS					
NAME	VALUE	UNIT	NAME	VALUE	UNIT
PSNR	2.32800		BS	17.5000	IN
MATR	LIME		HC	1.00000	G/C3
M DEN	2.71000	G/C3	FD	6.90000	MMHD
BHF	WATE	DHMM	DSEC	6.00000	MMHD
SBR	1.00000	F	BHS	OPEN	
FMI	PHIX				
DO	0.0				
PP	REC0				

TAPE NOT MADE

