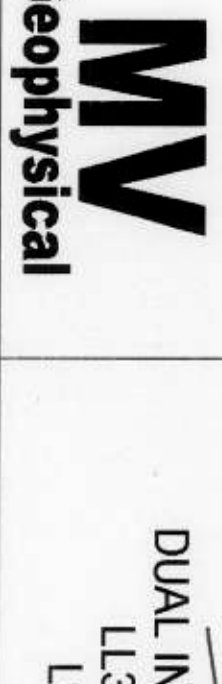


HES-20



DUAL INDUCTION
LL3 / SP
LOG

Company SFWMD
Well 58 Golden Ox Site 6 Production Well
Field Golden Ox
County Hendry
State/Prv Florida

Location
T-46 R-32

Permanent Datum Log Measured From
Ground Level
Elevation
K/D
Elevation
Other Services
XYGR
BH/C/DL

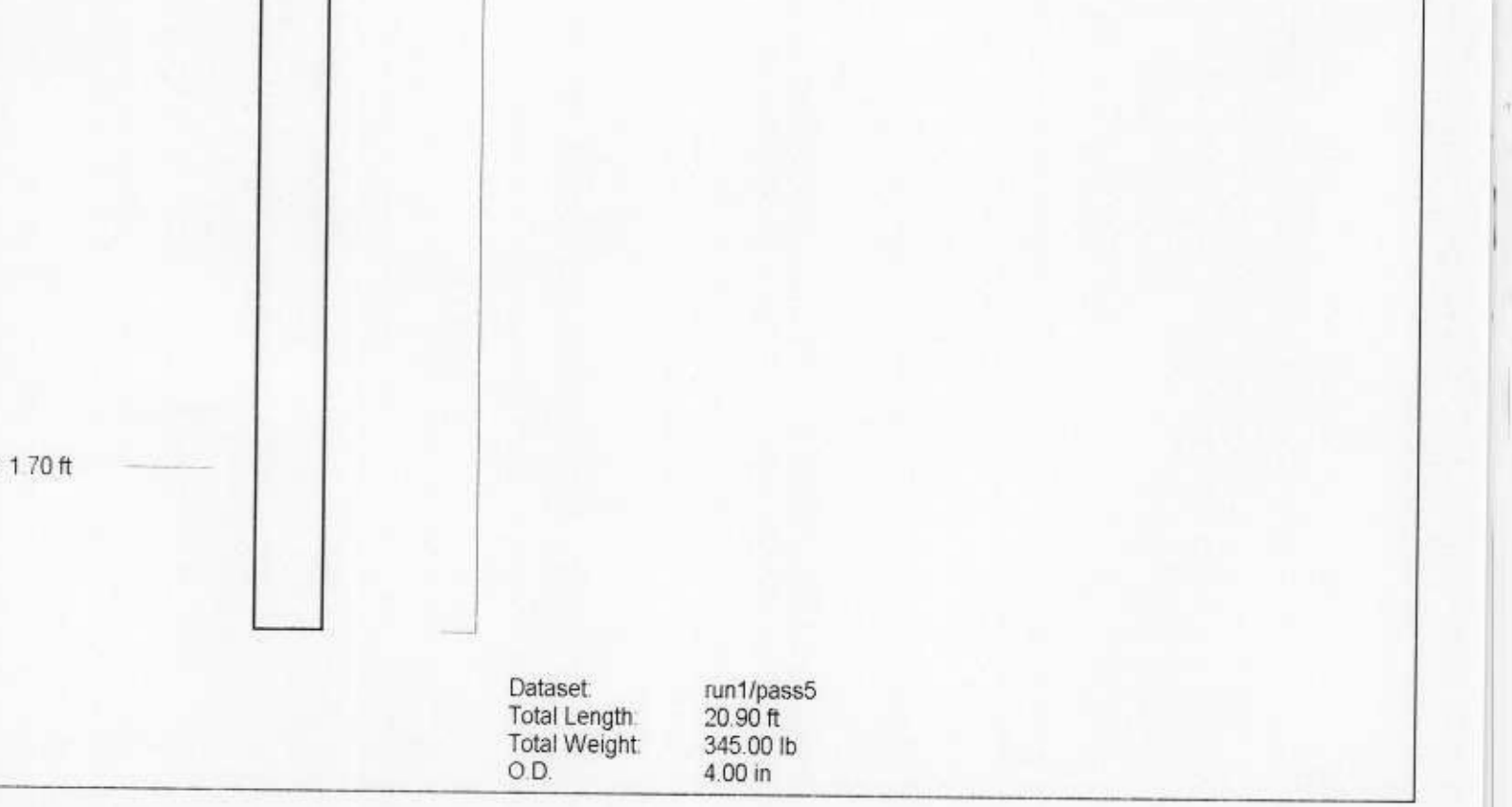
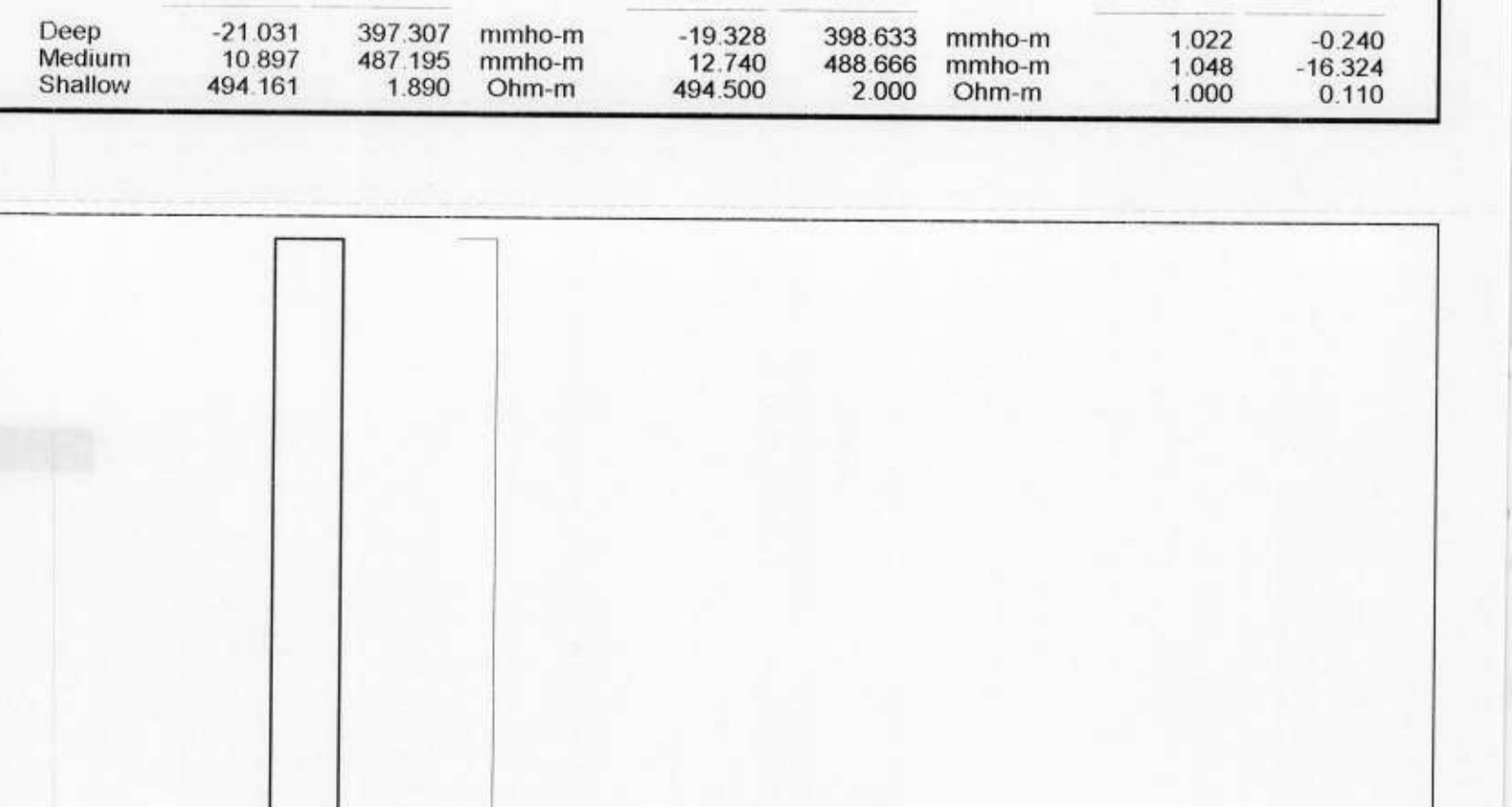
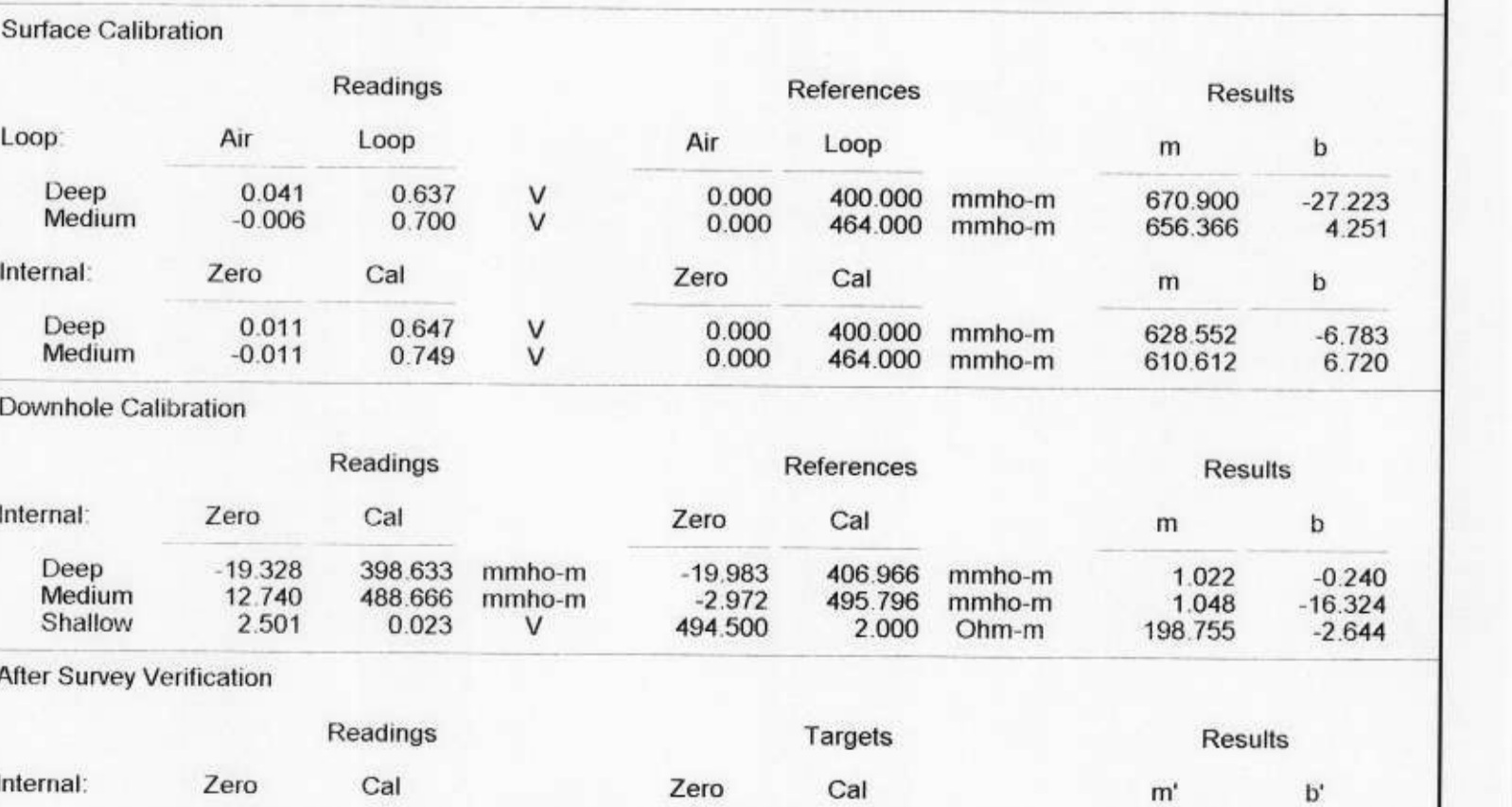
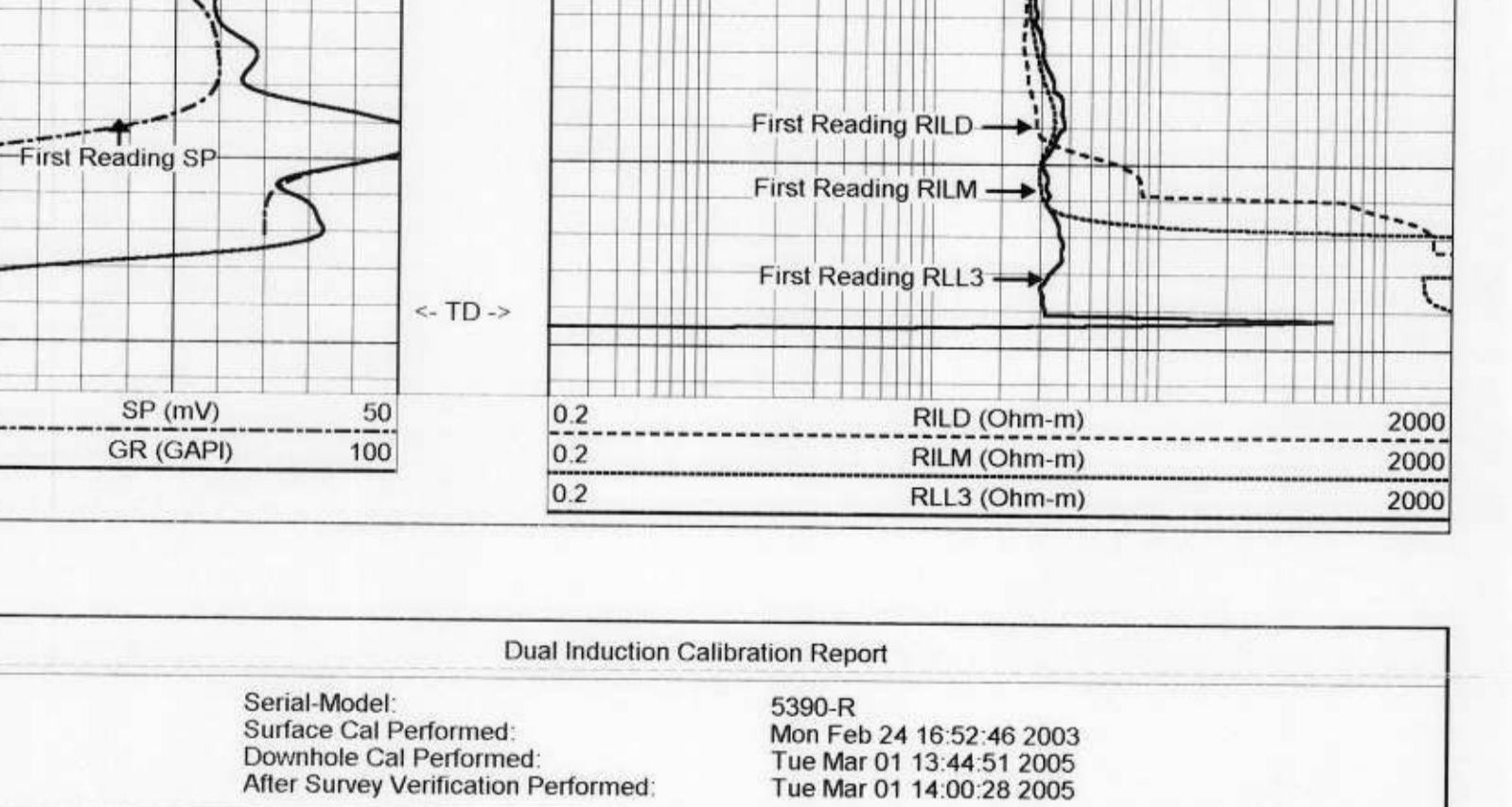
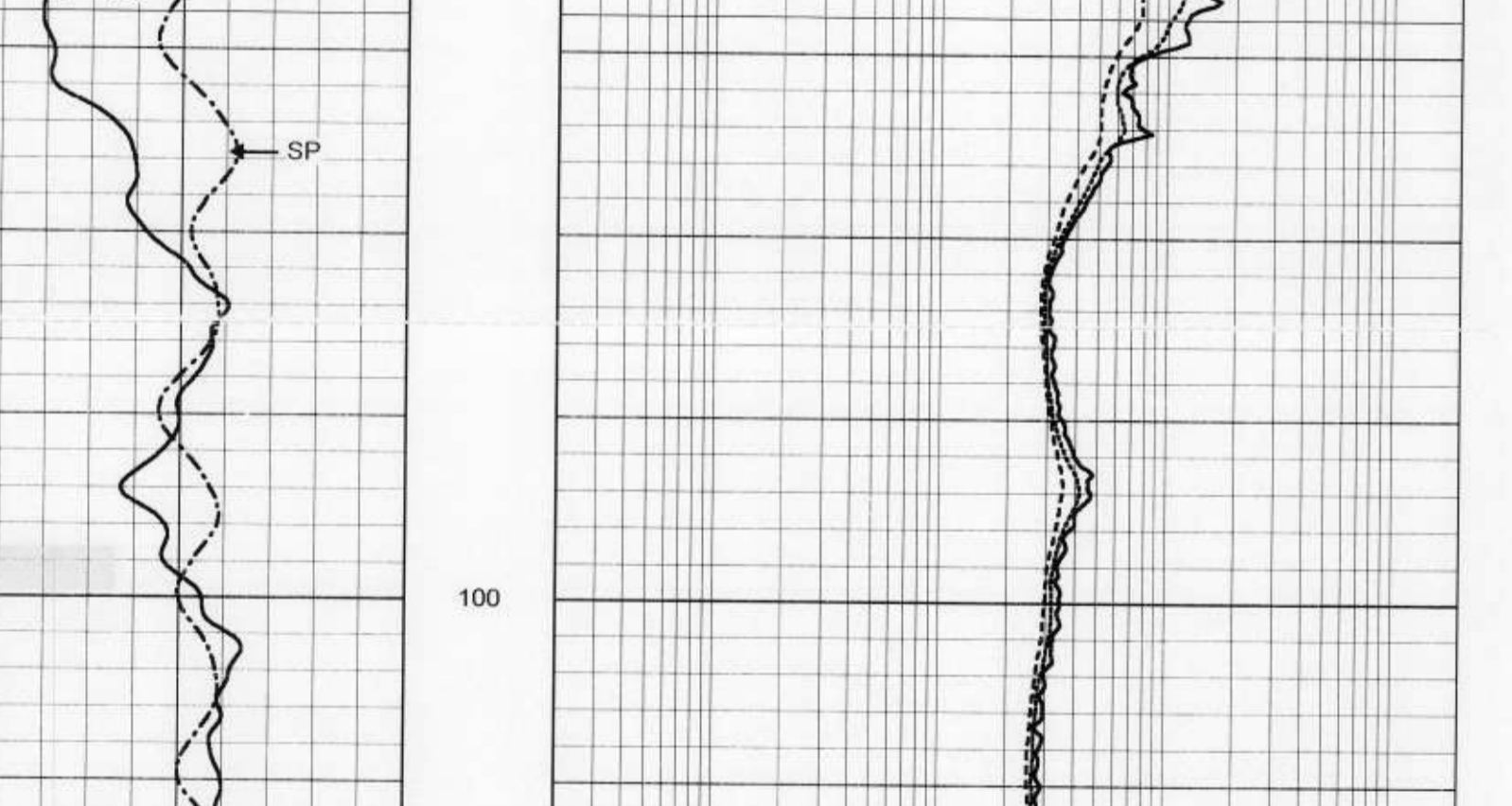
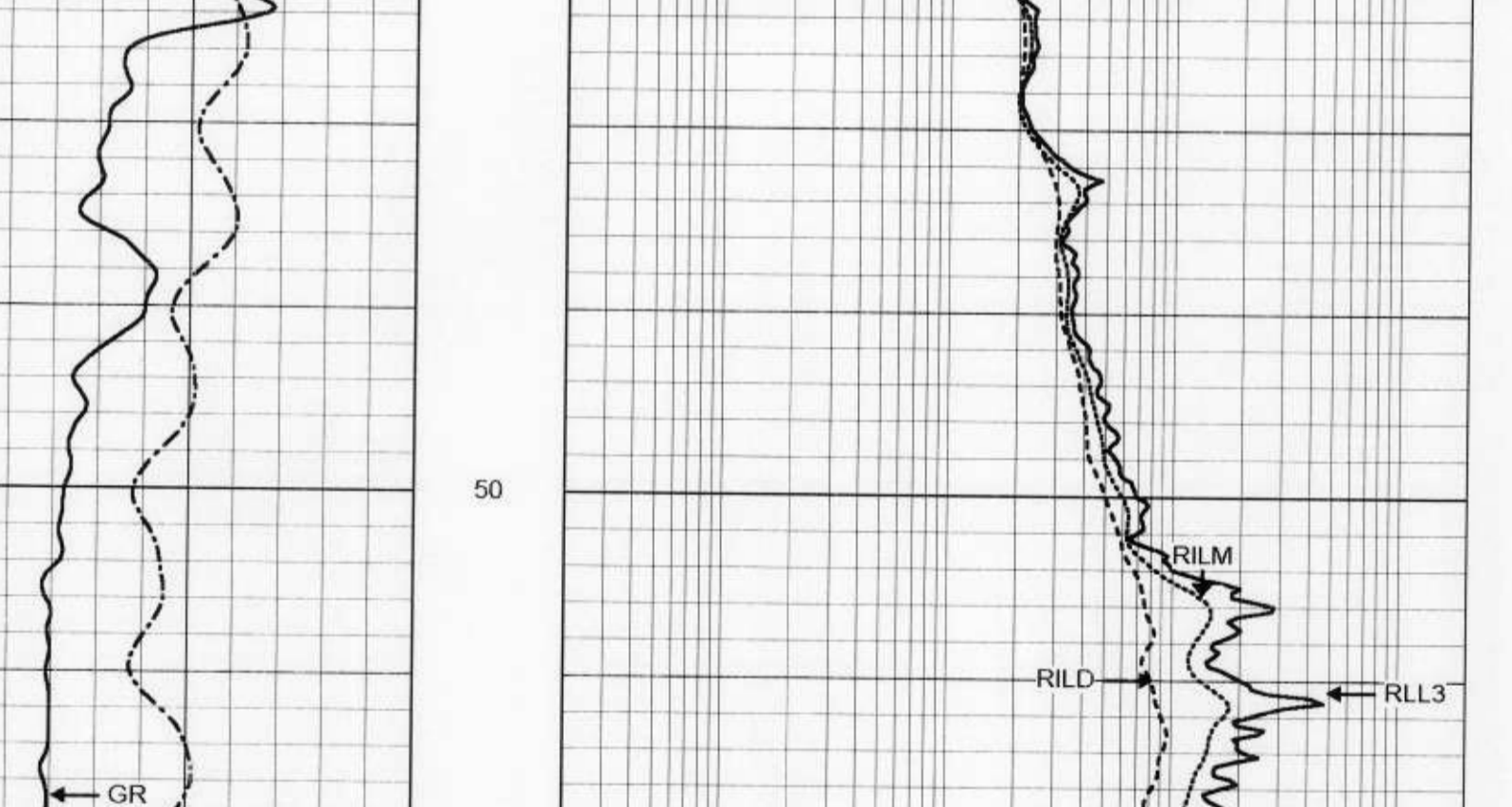
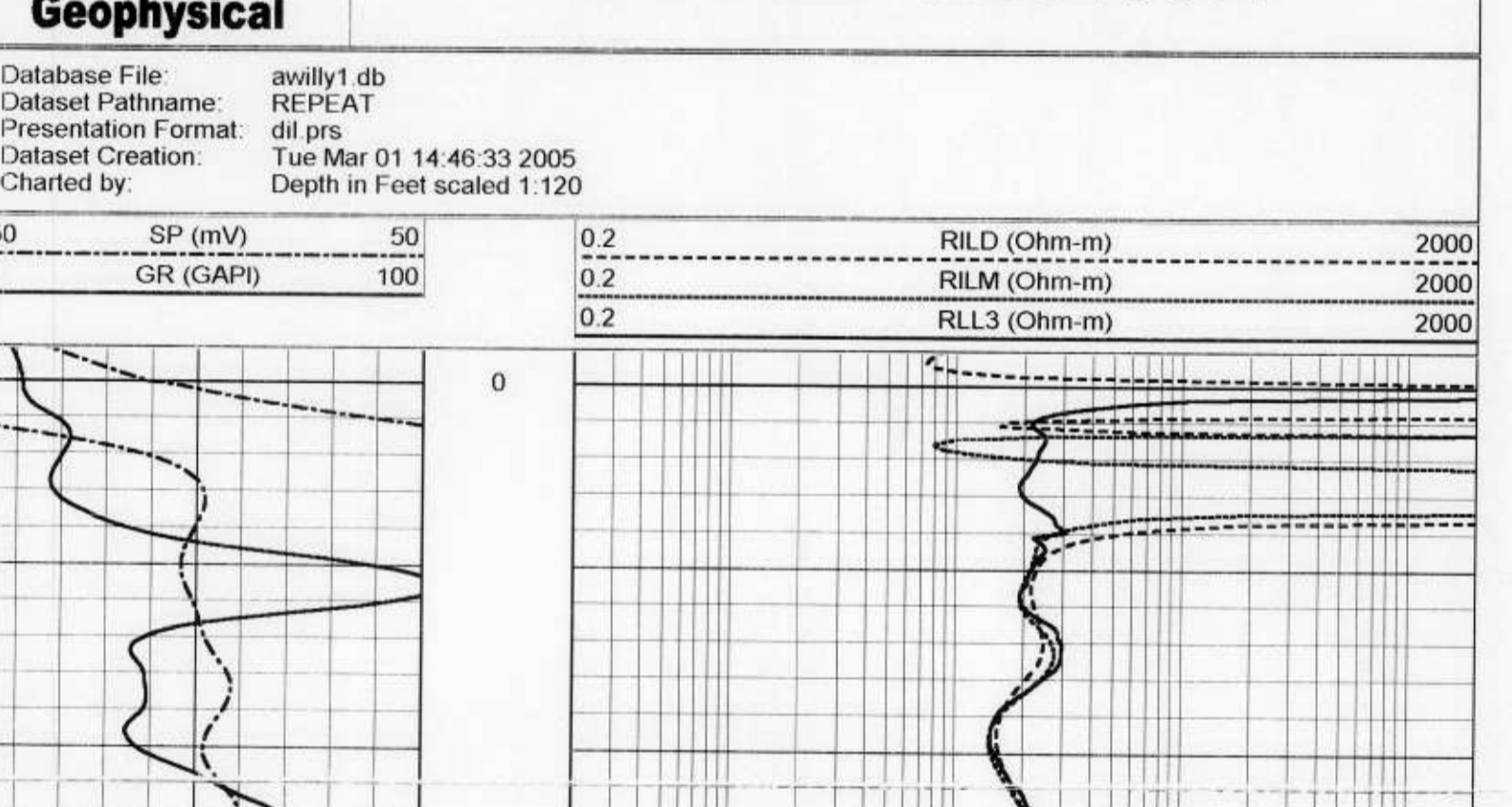
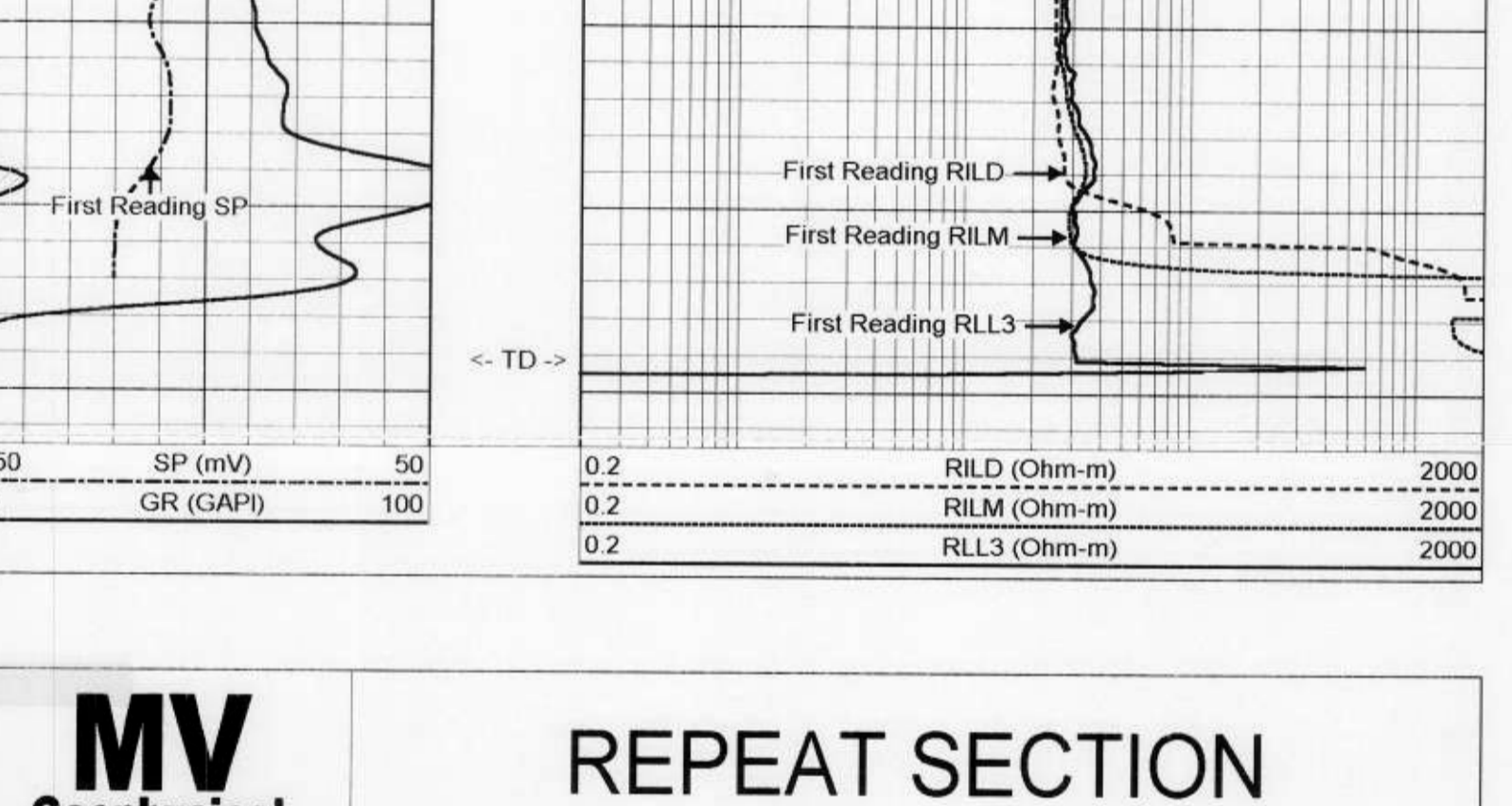
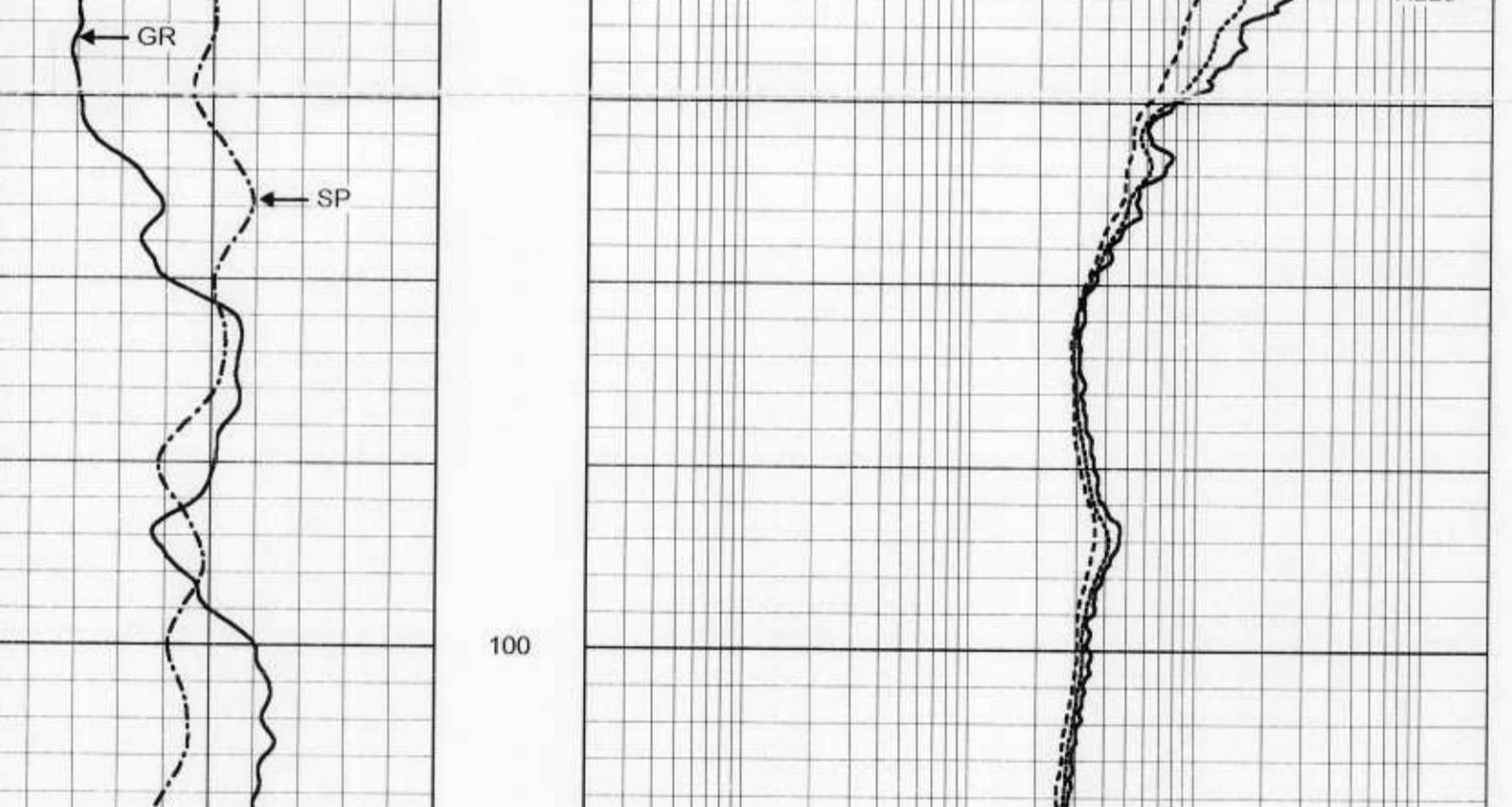
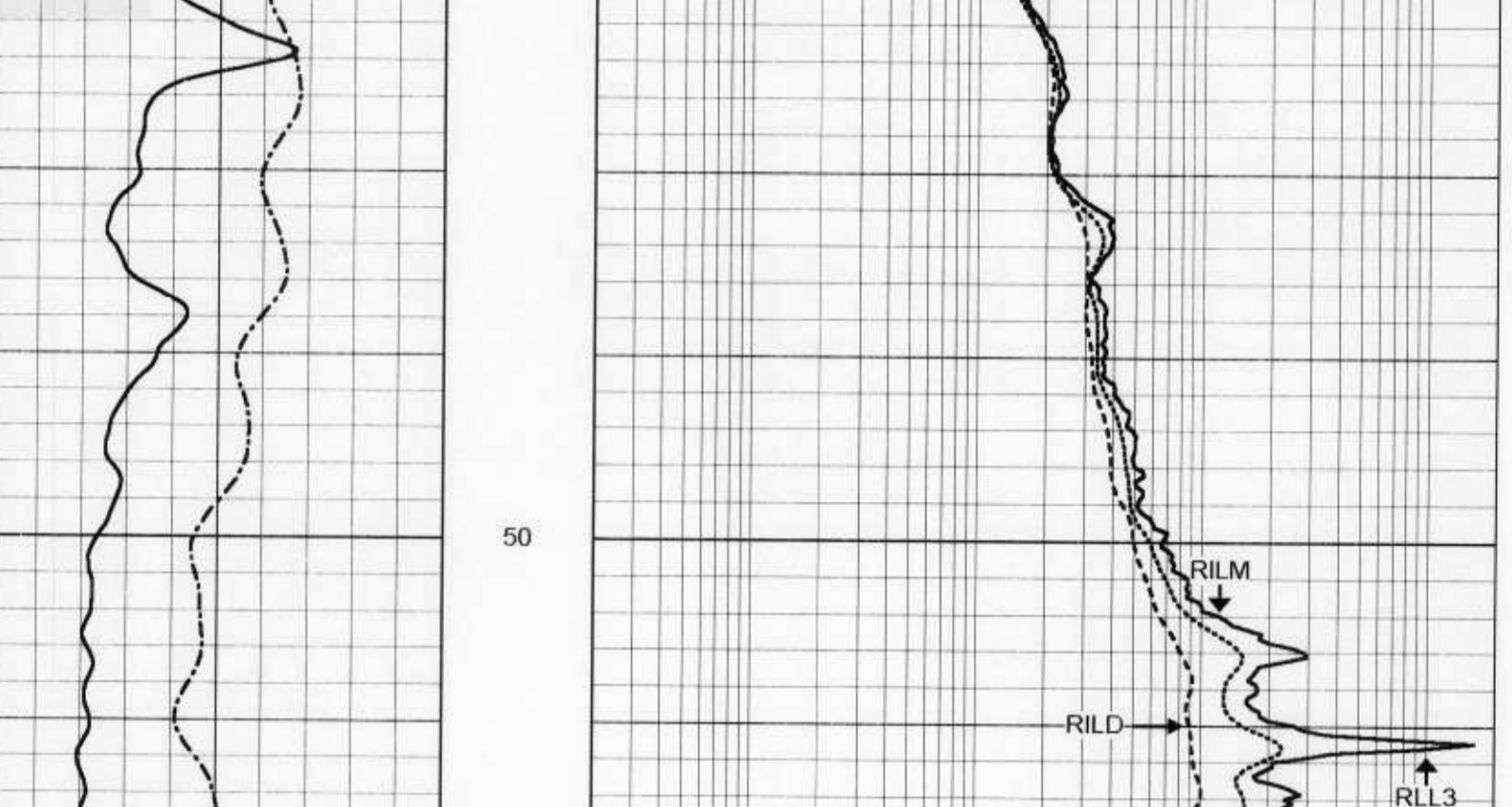
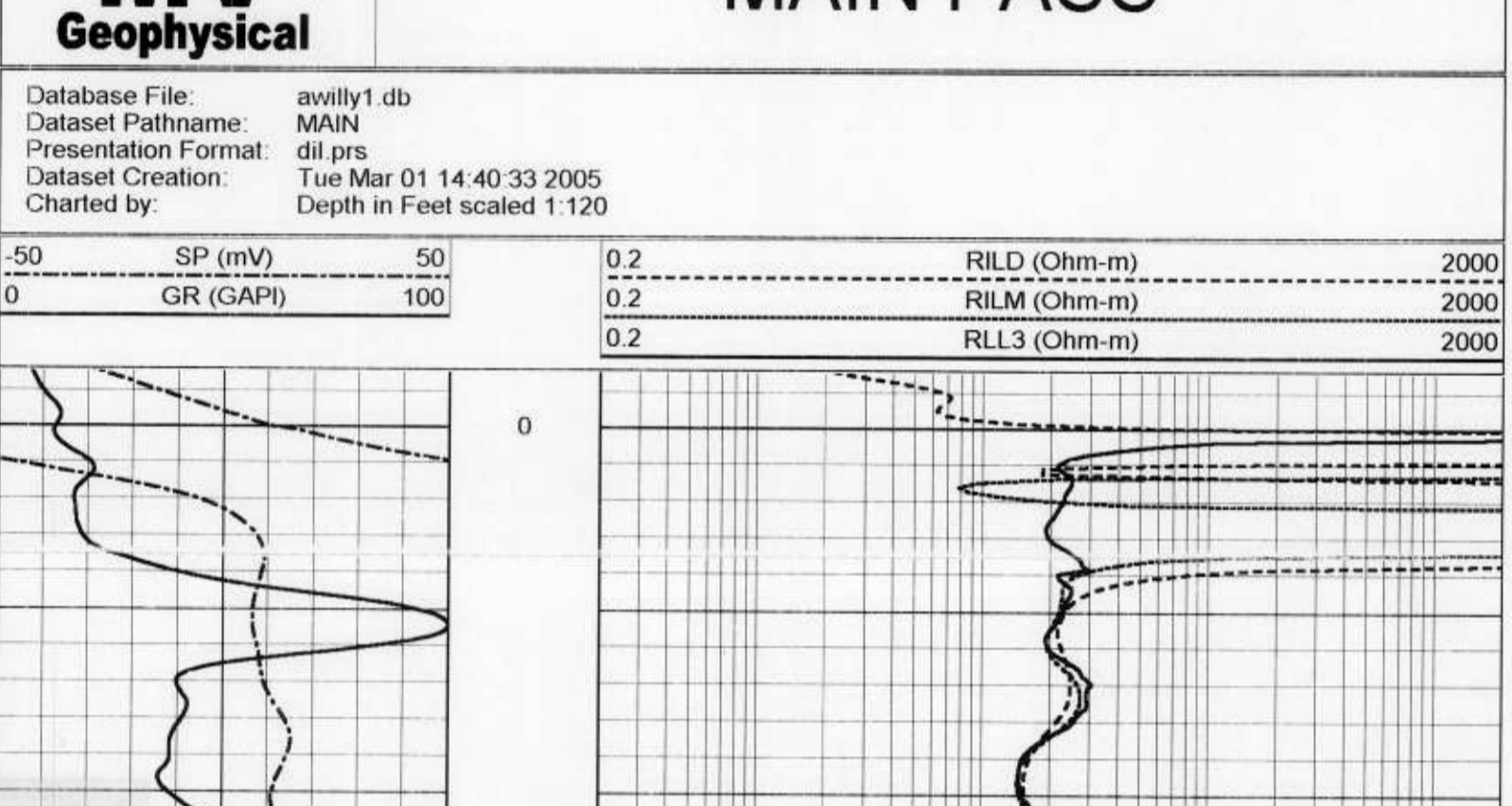
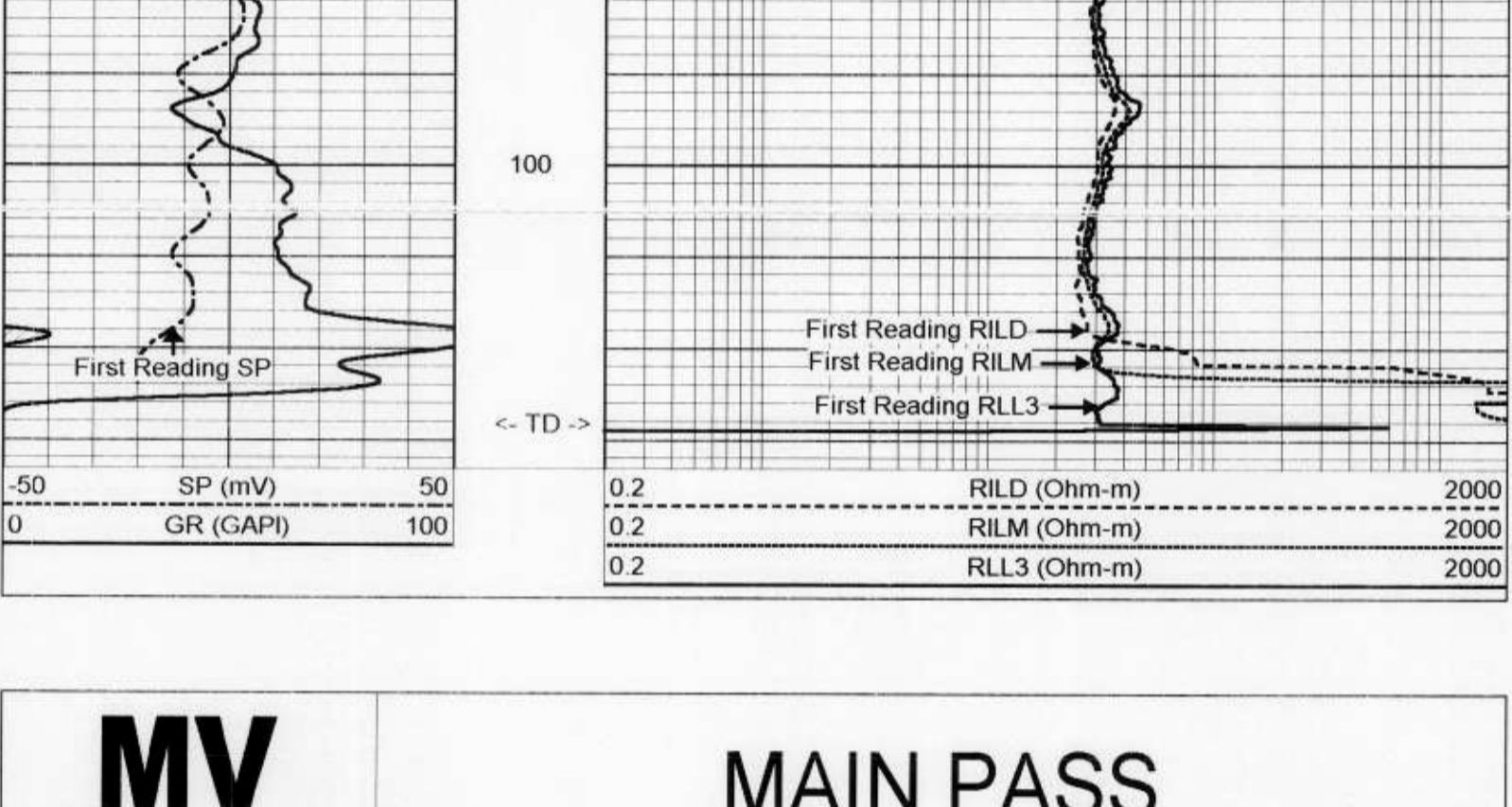
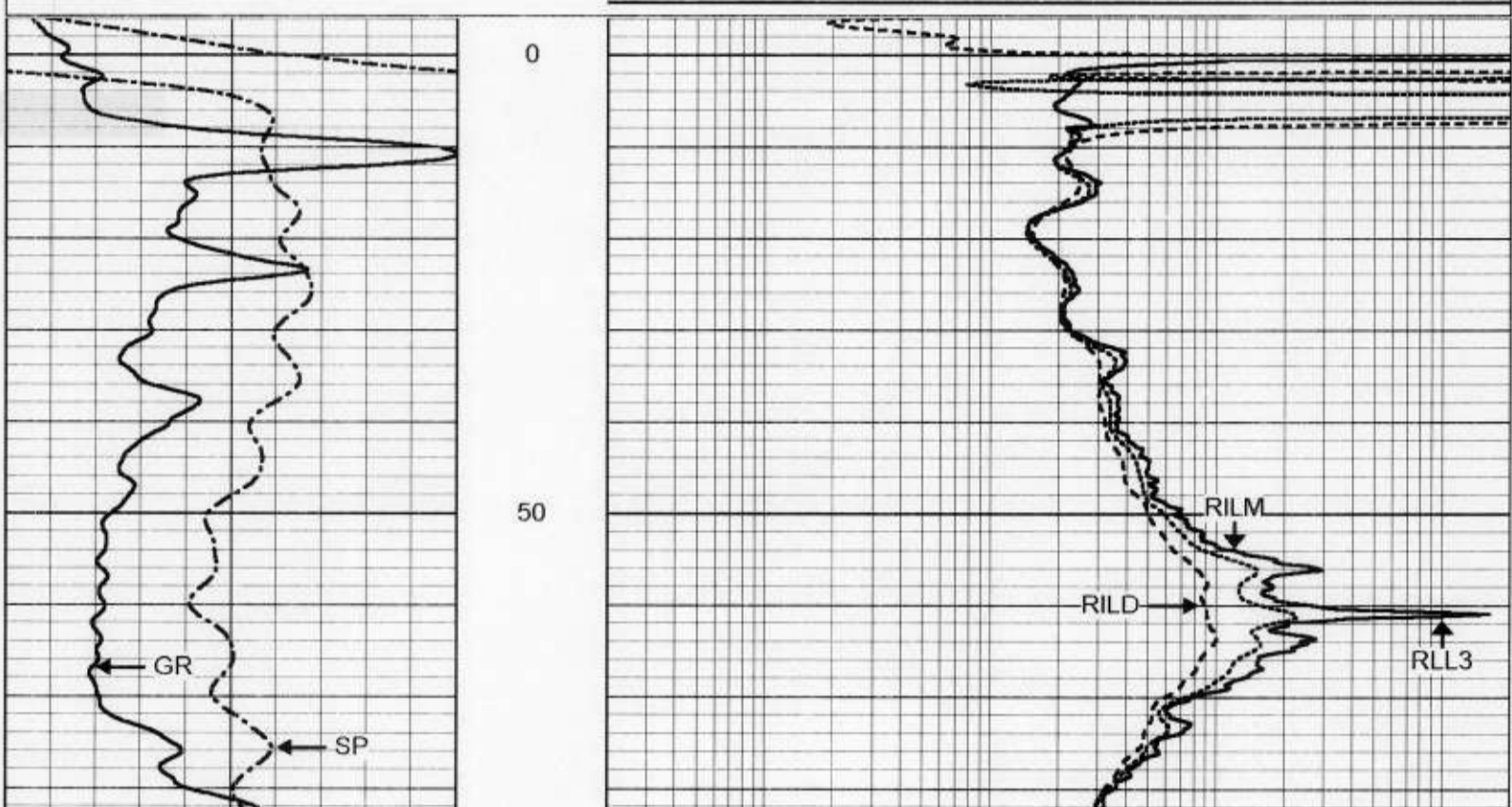
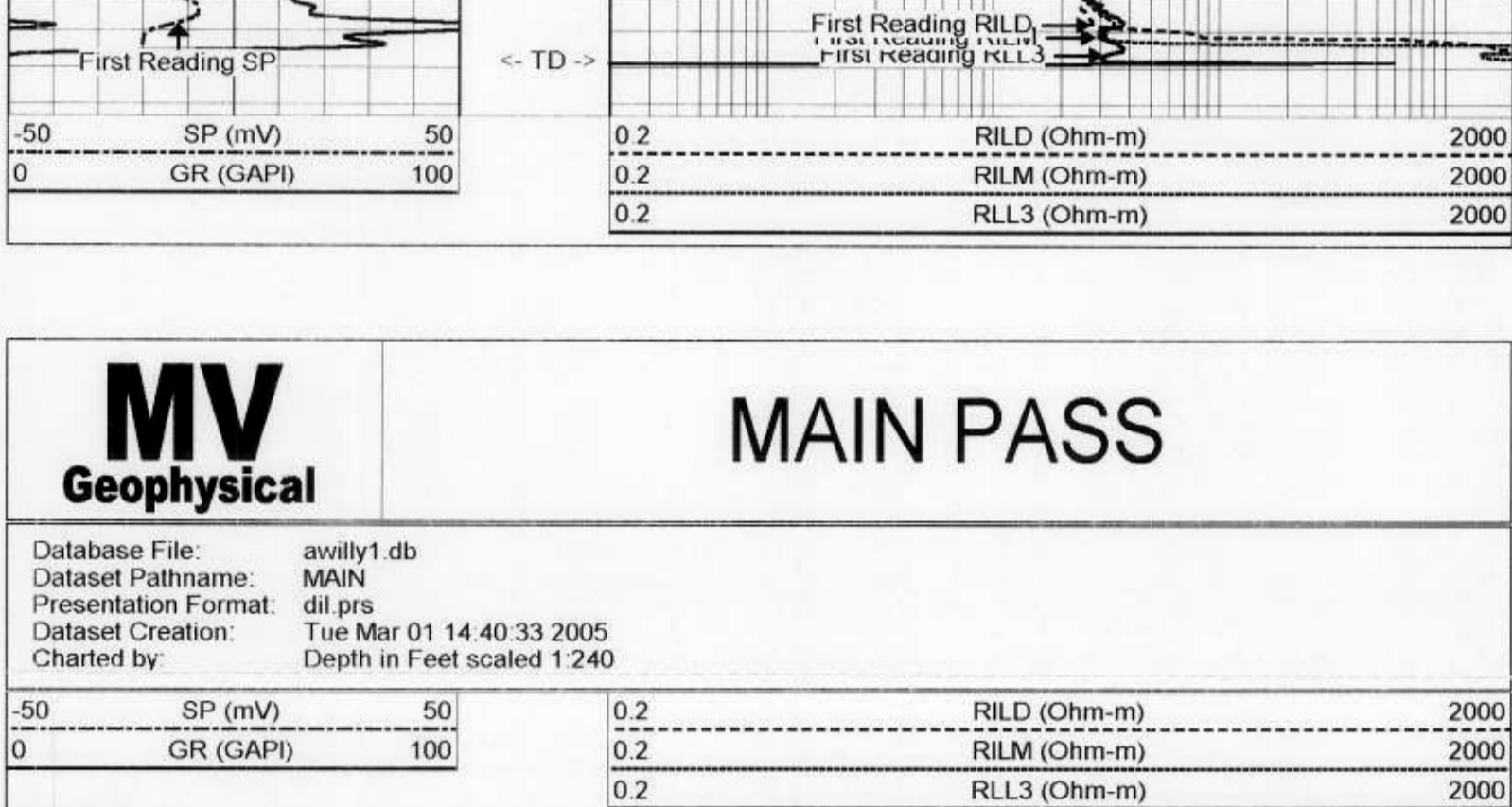
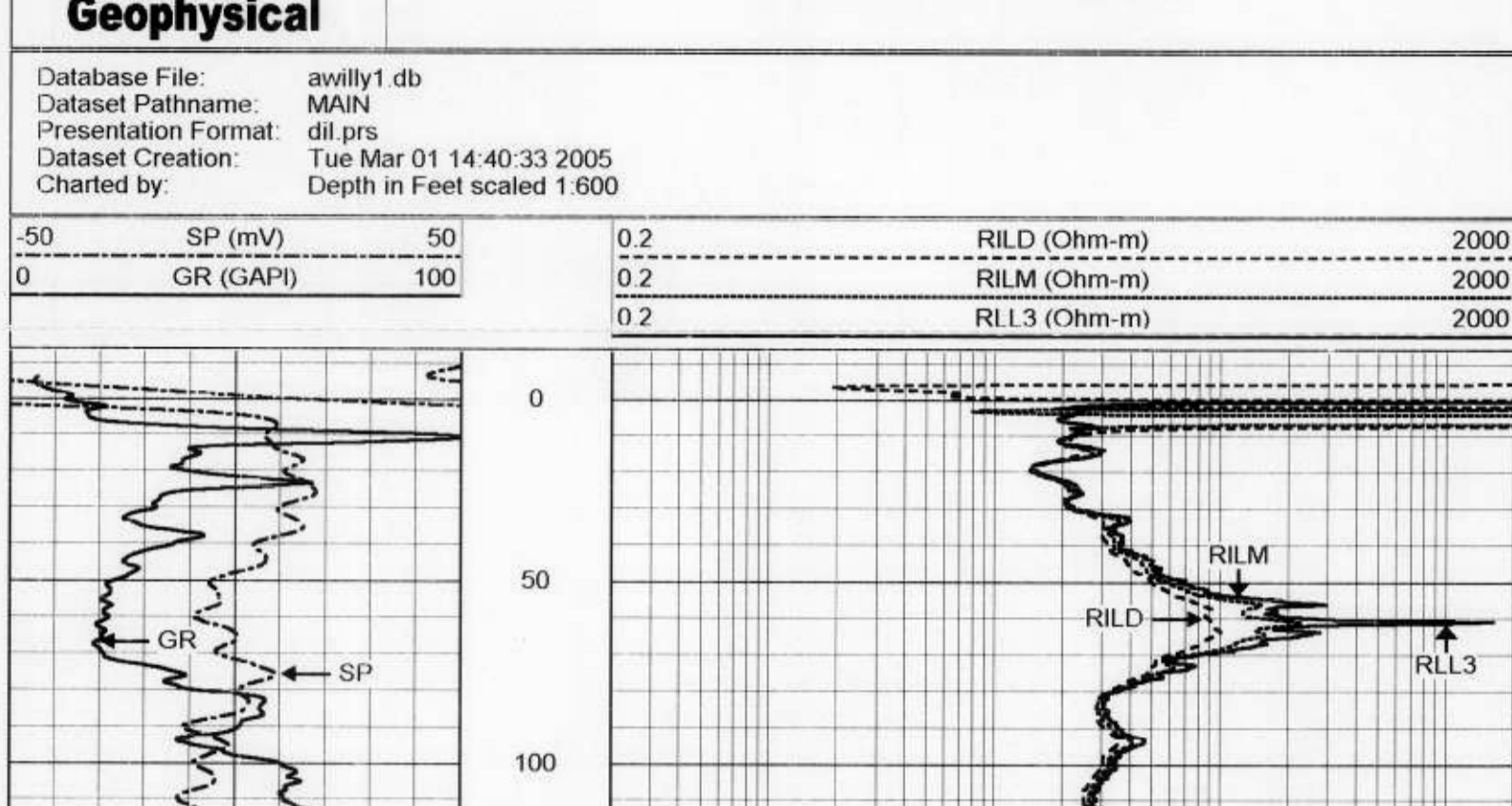
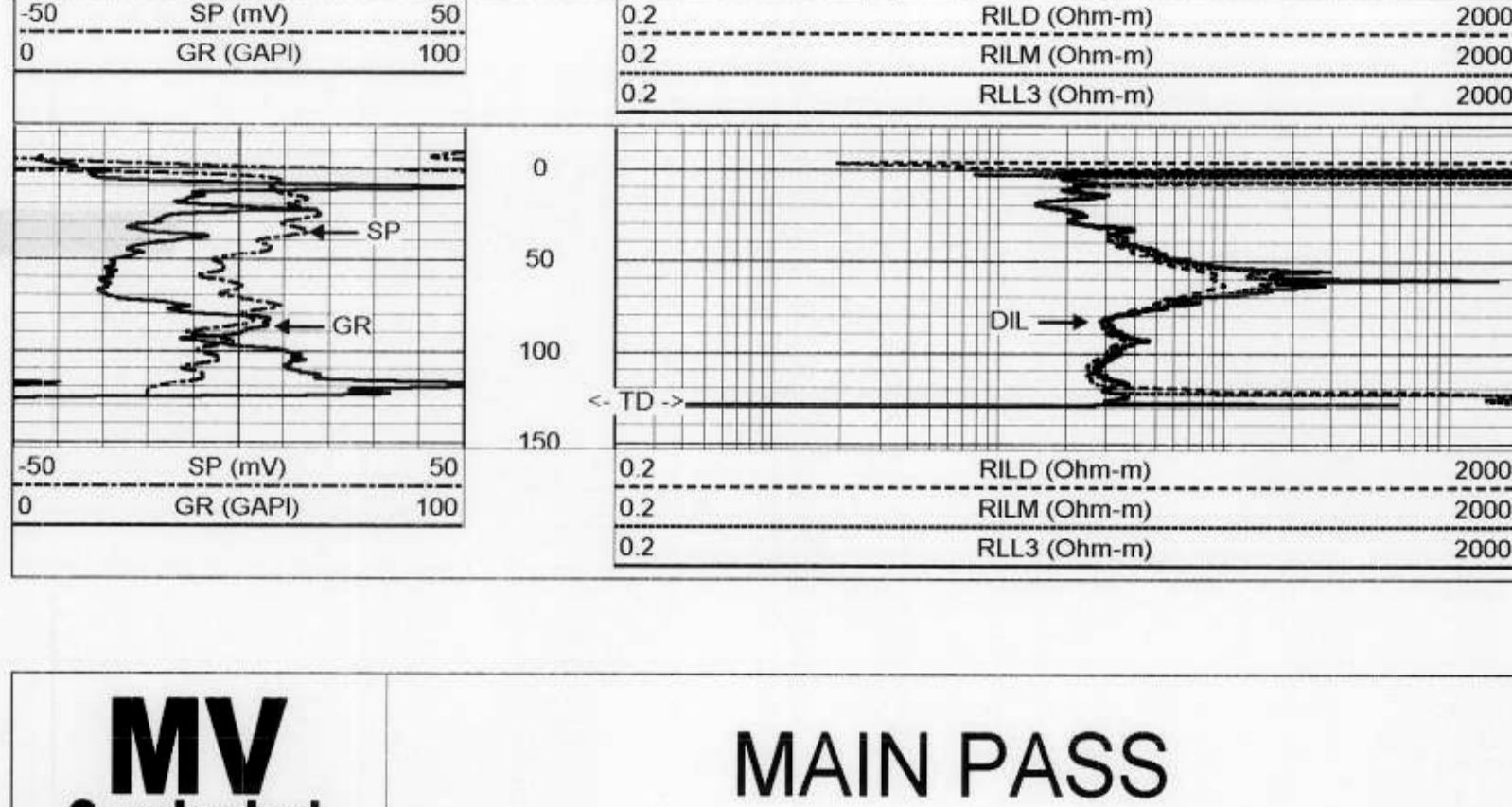
Log Number 114682005
Depth 138'
Bottom Logged Interval 128'
Open Hole Size 7.875"
Type Fluid MWD
Primary Velocity NANA
Estimated Cement Top 138.00'
Time Well Ready 13.03.0105
Estimated Cement Bottom 138.00'
F. Meters
Recorded By S. M. Marks
Reviewed By J. S. Marks
Run Number 2815
SP/FAE 128.00m
CME
Bowtie Record From 100 To 100
Log Length Record From To
Size Weight
Wellbore
Casing Record
Surface String
Log Number 2005093
P.O. #
Job No.
FIELD PRINT

All interpretations are opinions based on inferences from electrical or other measurements and are not to be taken as a guarantee of the accuracy or correctness of any interpretation, and we shall not, except in the case of gross or willful negligence on our part, be liable or responsible for any loss, costs, damages, or expenses incurred or sustained by anyone resulting from any interpretation made by any of our officers, agents or employees. These interpretations are also subject to our general terms and conditions set out in our current Price Schedule.

Comments

Rm=9.02 ohm-m @ 72.9 degF
Rmf=7.21 ohm-m @ 72.7 degF
Rmc=11.22 ohm-m @ 72.6 degF

Drilling Contractor: Advanced Well Drilling



Dataset: run1/pass5
Total Length: 20.90 ft
Total Weight: 345.00 lb
O.D.: 4.00 in

CILD 10.60 ft
SP 10.60 ft

CILM 6.80 ft

RLL3 1.70 ft


Dual Induction Calibration Report

Serial-Model: 5390-R
Surface Cal Performed: Mon Feb 24 16:52:46 2003
Downhole Cal Performed: Tue Mar 01 13:44:51 2005
After Survey Verification Performed: Tue Mar 01 14:00:28 2005

Surface Calibration			References			Results	
Loop	Air	Loop	Air	Loop	m	b	
Deep	0.041	0.637	0.000	400.000	670.900	-27.223	
Medium	-0.006	0.700	0.000	464.000	656.368	4.251	
Internal:	Zero	Cal	Zero	Cal	m <td>b <td></td> </td>	b <td></td>	
Deep	0.011	0.647	0.000	400.000	628.552	-6.783	
Medium	-0.011	0.749	0.000	464.000	610.612	6.720	

Downhole Calibration			References			Results	
Internal:	Zero	Cal	Zero	Cal	m	b	
Deep	-19.328	398.633	-19.983	406.966	1.022	-0.240	
Medium	12.740	488.666	-2.972	495.796	1.048	-16.324	
Shallow	2.501	0.023	494.500	2.000	198.755	-2.644	

After Survey Verification			Targets			Results	
Internal:	Zero	Cal	Zero	Cal	m'	b'	
Deep	-21.031	397.307	-19.328	398.633	1.022	-0.240	
Medium	10.897	487.195	12.740	488.666	1.048	-16.324	
Shallow	494.161	1.890	494.500	2.000	1.000	0.110	



**X-Y CALIPER
GAMMA RAY
LOG**

Company: SFWMD
Well: Golden Ox Site 6 Production Well
Field: Golden Ox
County: Hendry
State/Prov: Florida

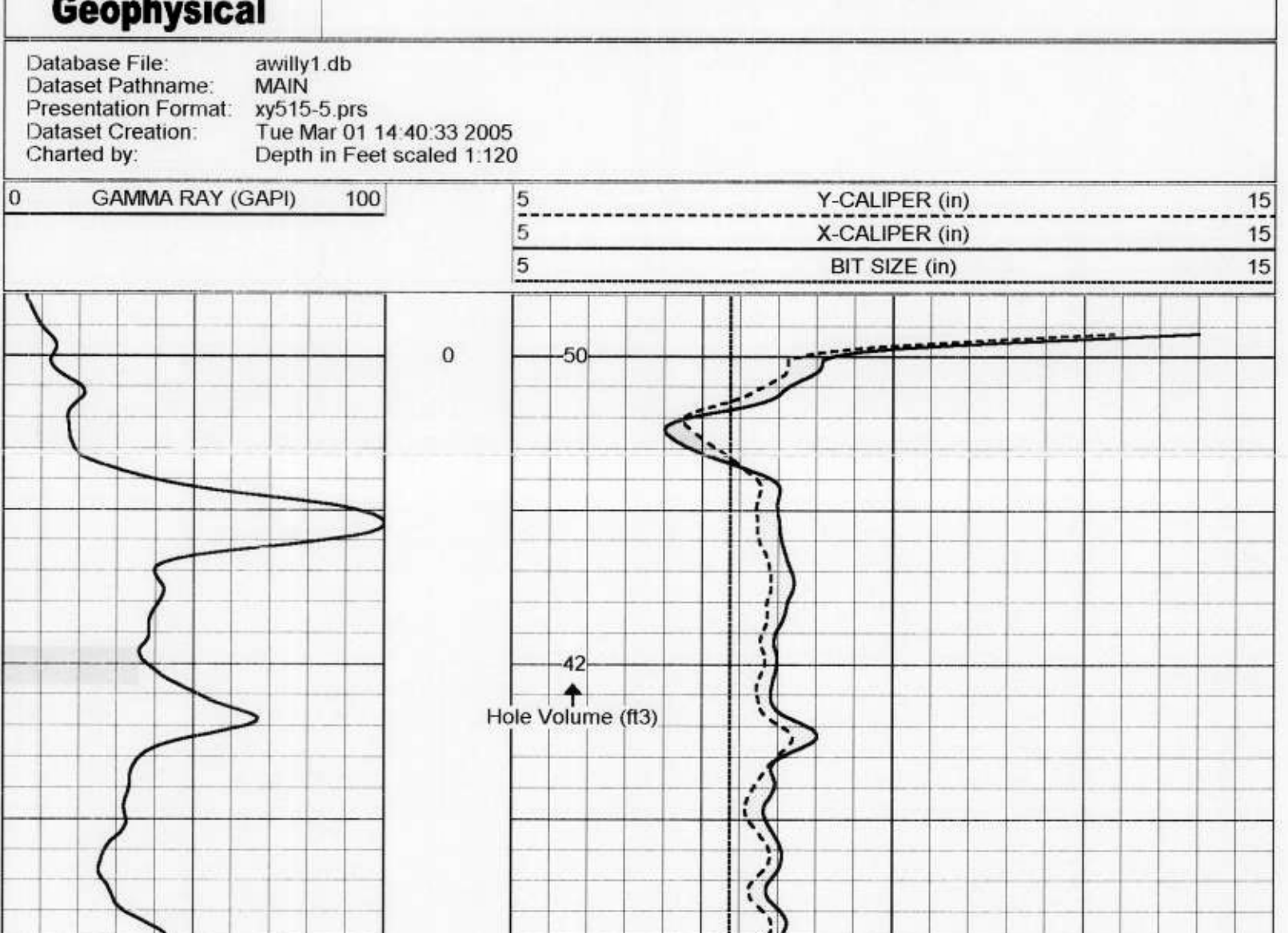
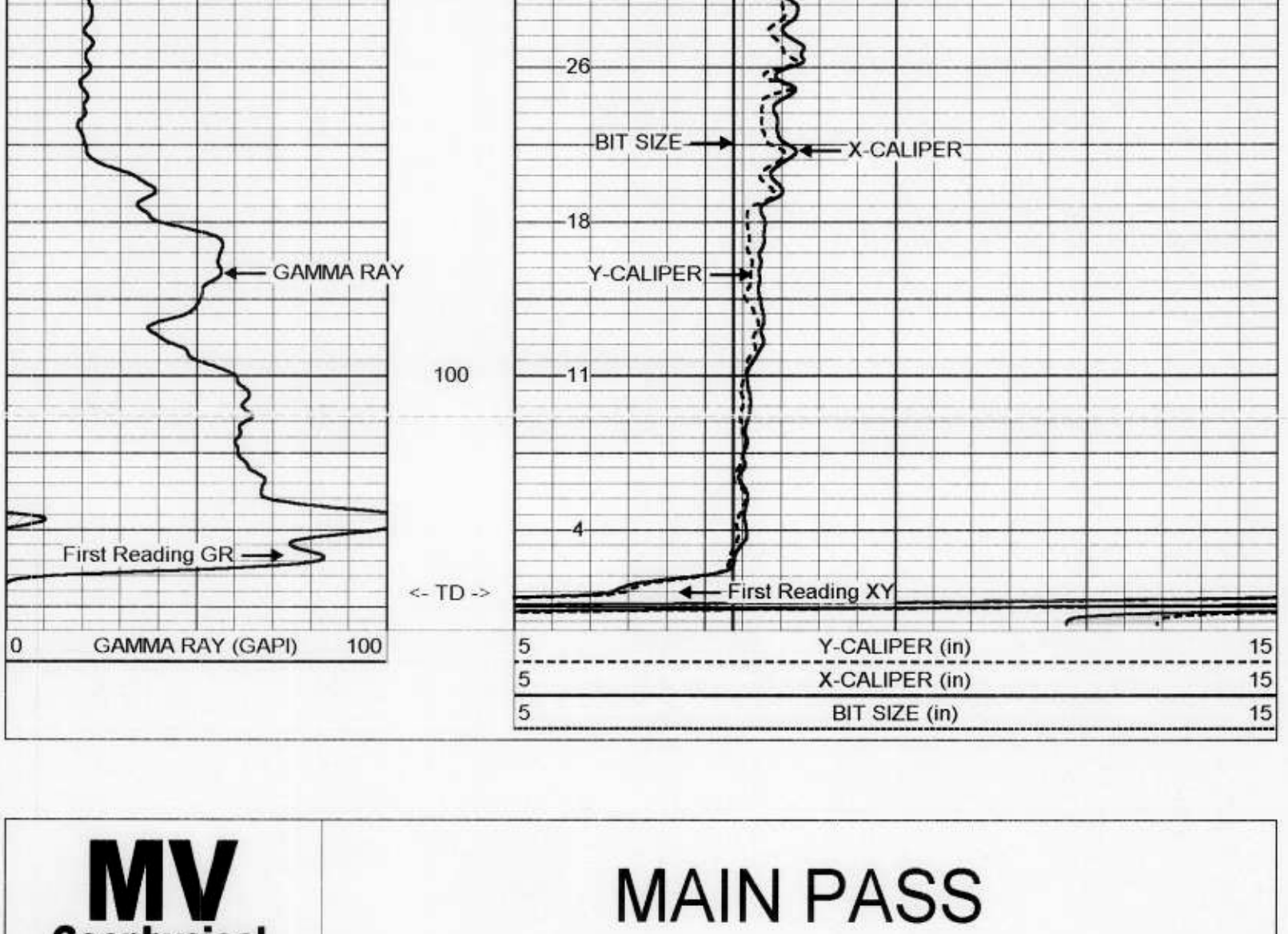
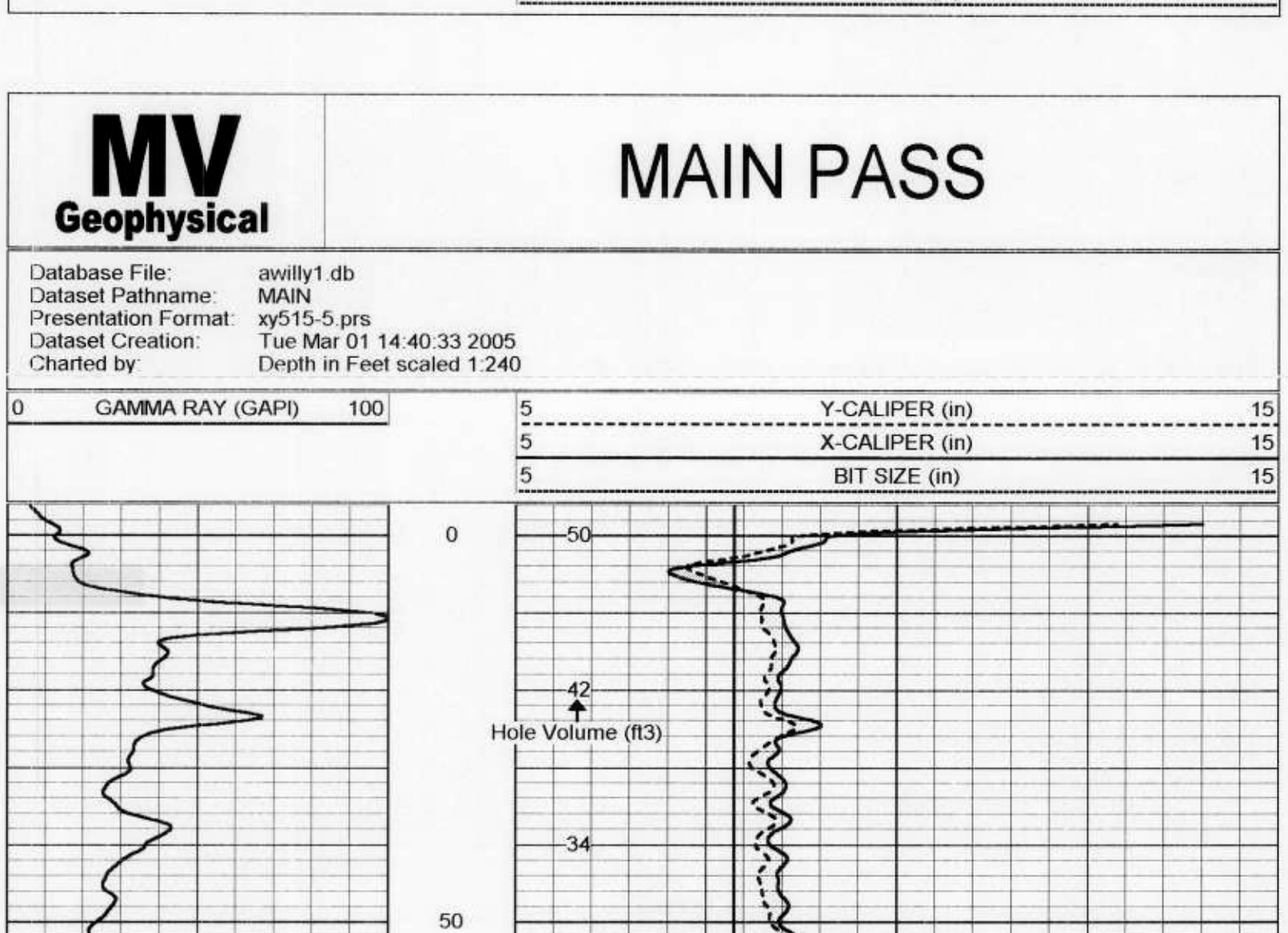
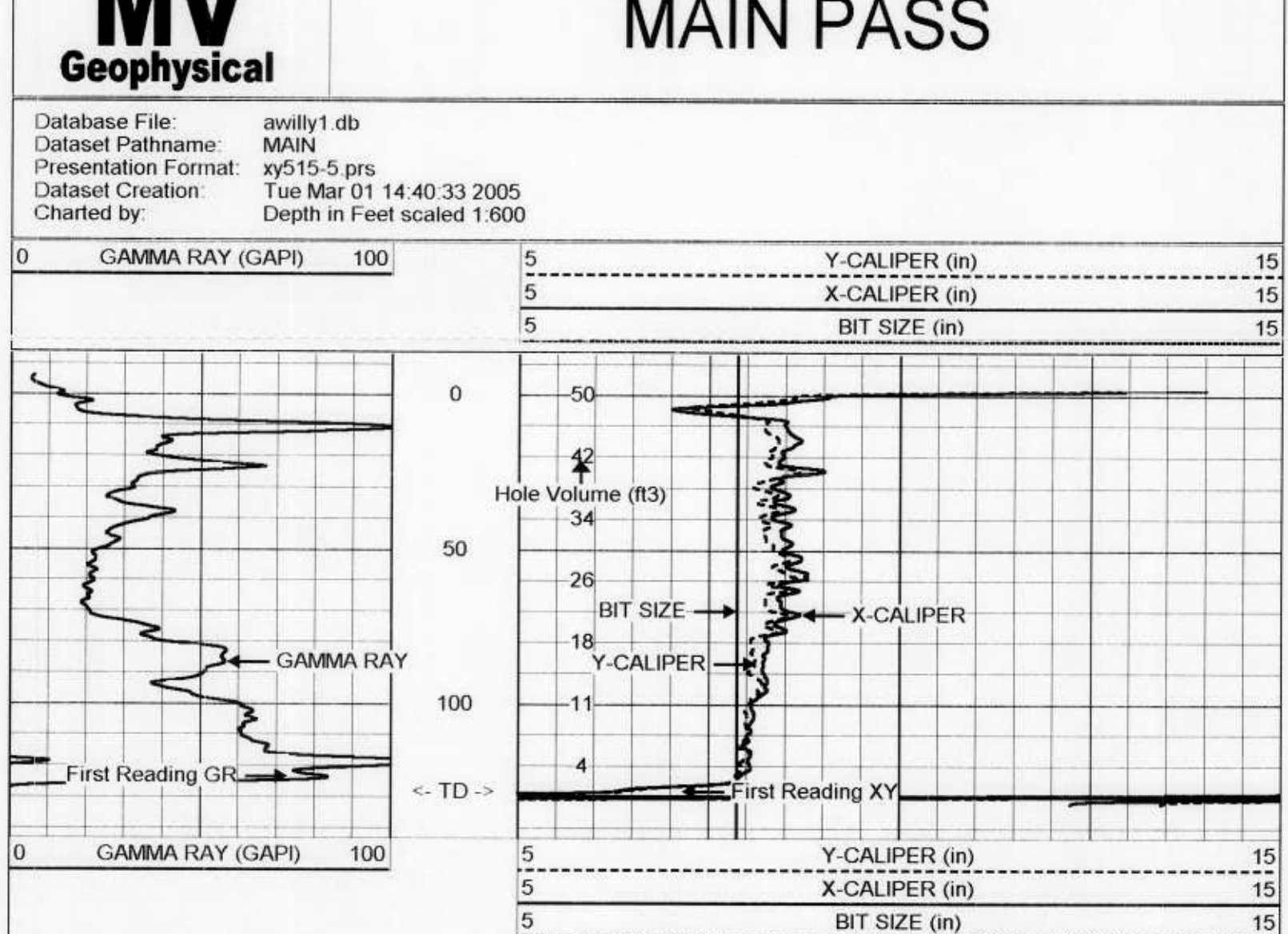
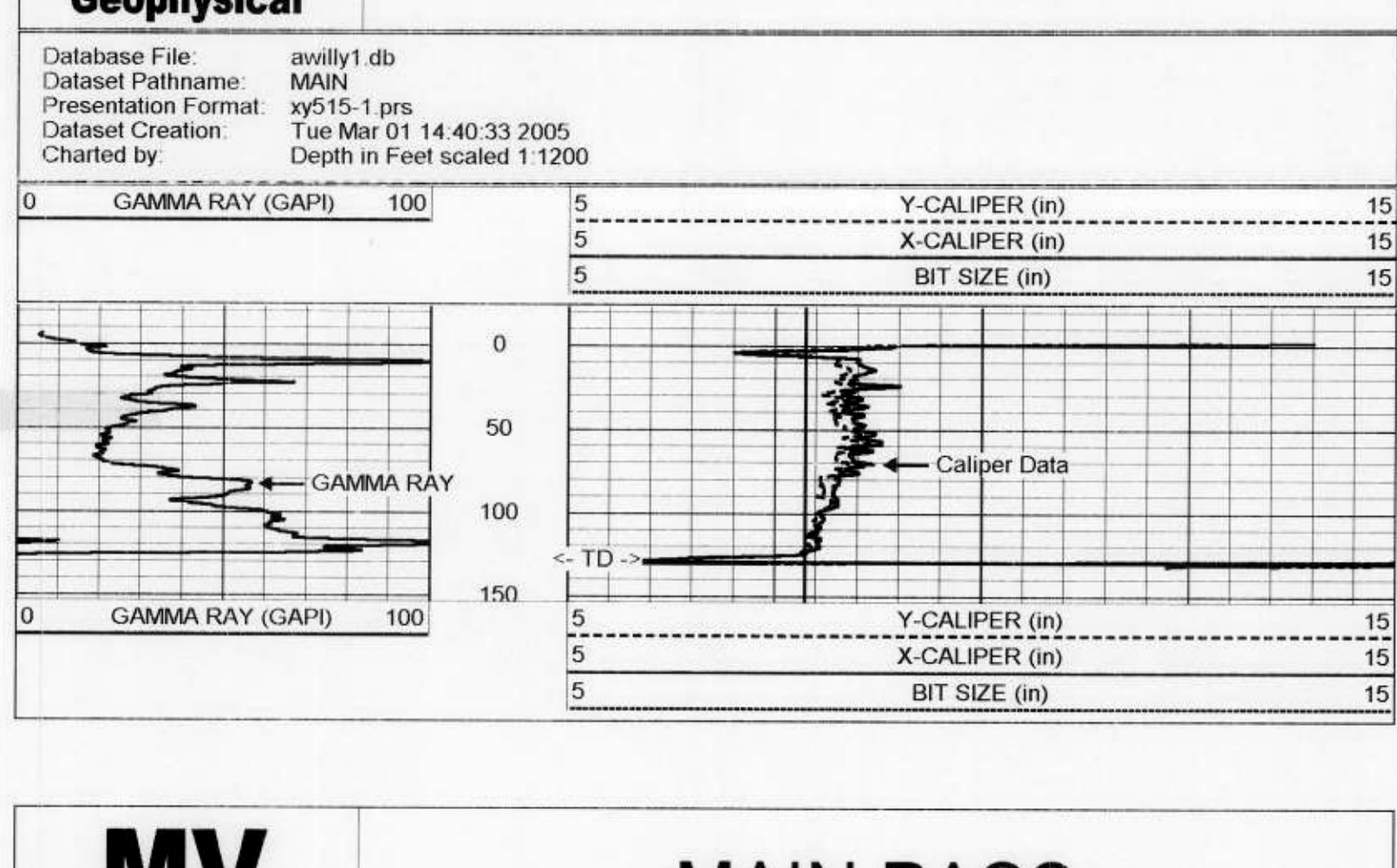
Location: T-46 R-32
Elevation: 1468.00
K.B. Elevation: 1468.00
D.U.S.P. B.H.C.V.D.L.

Company	SFWMD
Well	Golden Ox Site 6 Production Well
Field	Golden Ox
County	Hendry
State/Prov	Florida
Location	T-46 R-32
Elevation	1468.00
K.B. Elevation	1468.00
D.U.S.P. B.H.C.V.D.L.	
Permanent Datum	Ground Level
Log Measured From	Ground Level
Logging Measured From	Ground Level
Well Number	1468.00
Depth	130'
Depth Logged Interval	130'
Open Hole Size	3.50"
Open Hole Size	3.50"
Type Fluid	MUD
Max. Recorded Temp.	NA
Estimated Cement Top	NA
Run In Time	13:30:15
Equipment	IMC/S-1
Location By	R. WINGS
Edmonton Number	J. (SFWMD)
Well Number	7.815
Well Name	ONE
Well Status	1:28:00PM
Well Type	WATER
Well Depth	130'
Well Bottom	130'
Well Production	Production Shut
Well Number	2000020
Well Name	P.O. #
Well Status	1:28:00PM

All interpretations are opinions based on inferences from electrical or other measurements and we cannot and do not guarantee the accuracy or correctness of any interpretation, and we shall not, except in the case of gross or willful negligence on our part, be liable or responsible for any loss, costs, damages, or expenses incurred or sustained by anyone resulting from any interpretation made by any of our officers, agents or employees. These interpretations are also subject to our general terms and conditions set out in our current Price Schedule.

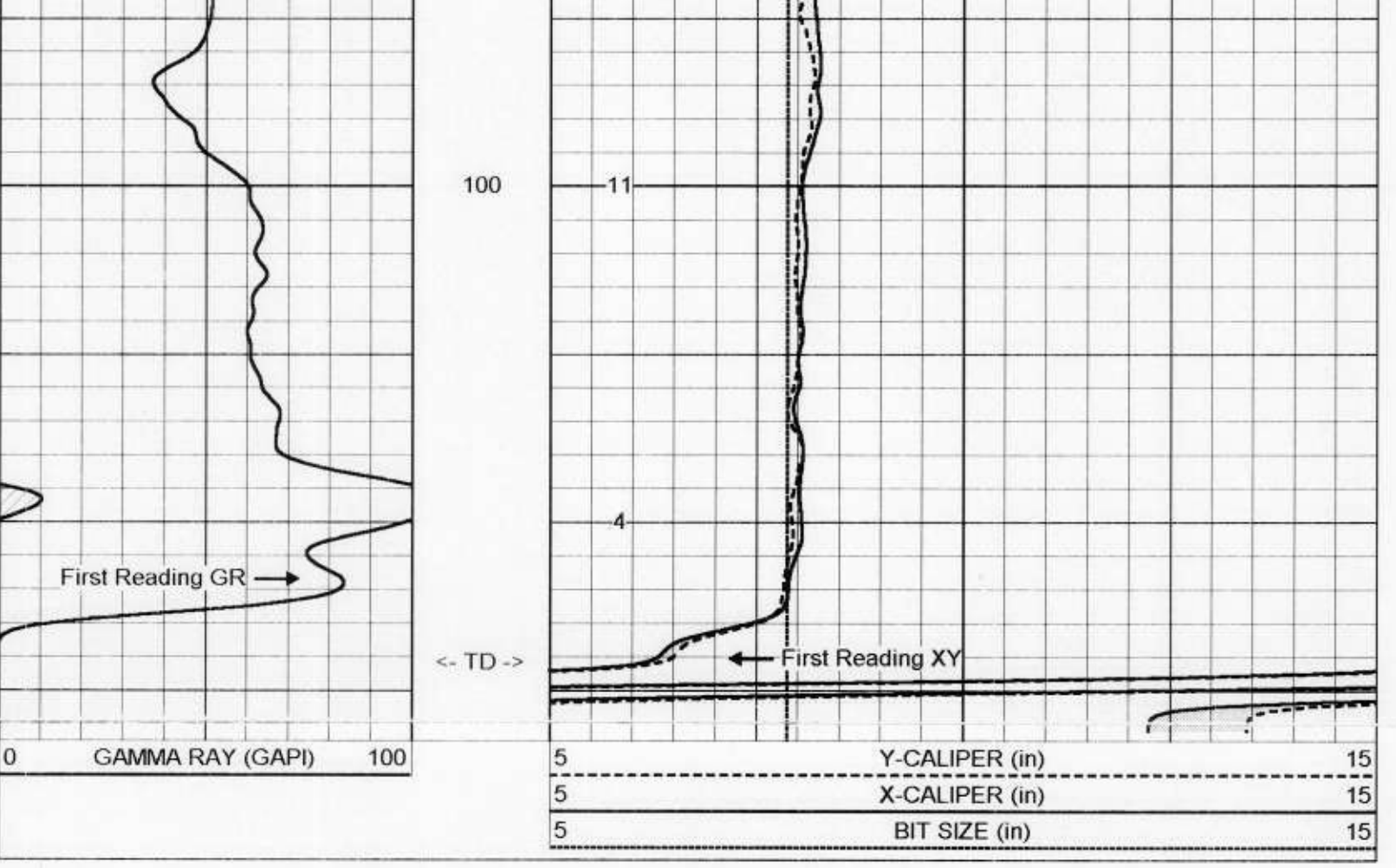
Comments

X-Y Caliper Arm Extensions: 33"
Drilling Contractor: Advanced Well Drilling



Serial Number:	01S
Tool Model:	XYCS
Performed:	Tue Mar 01 13:18:44 2005
Small Ring:	8 in
Large Ring:	33 in
Reading with Small Ring:	531
Reading with Large Ring:	1046.2
Gain:	0.0485248
Offset:	-17.7667

Serial Number:	01
Tool Model:	GROH
Performed:	Tue Mar 01 12:38:48 2005
Calibrator Value:	120 GAPI
Background Reading:	10.721 cps
Calibrator Reading:	126.511 cps
Sensitivity:	1.03636 GAPI/cps



Dataset: run1/pass2
Total Length: 9.35 ft
Total Weight: 150.00 lb
O.D.: 3.50 in

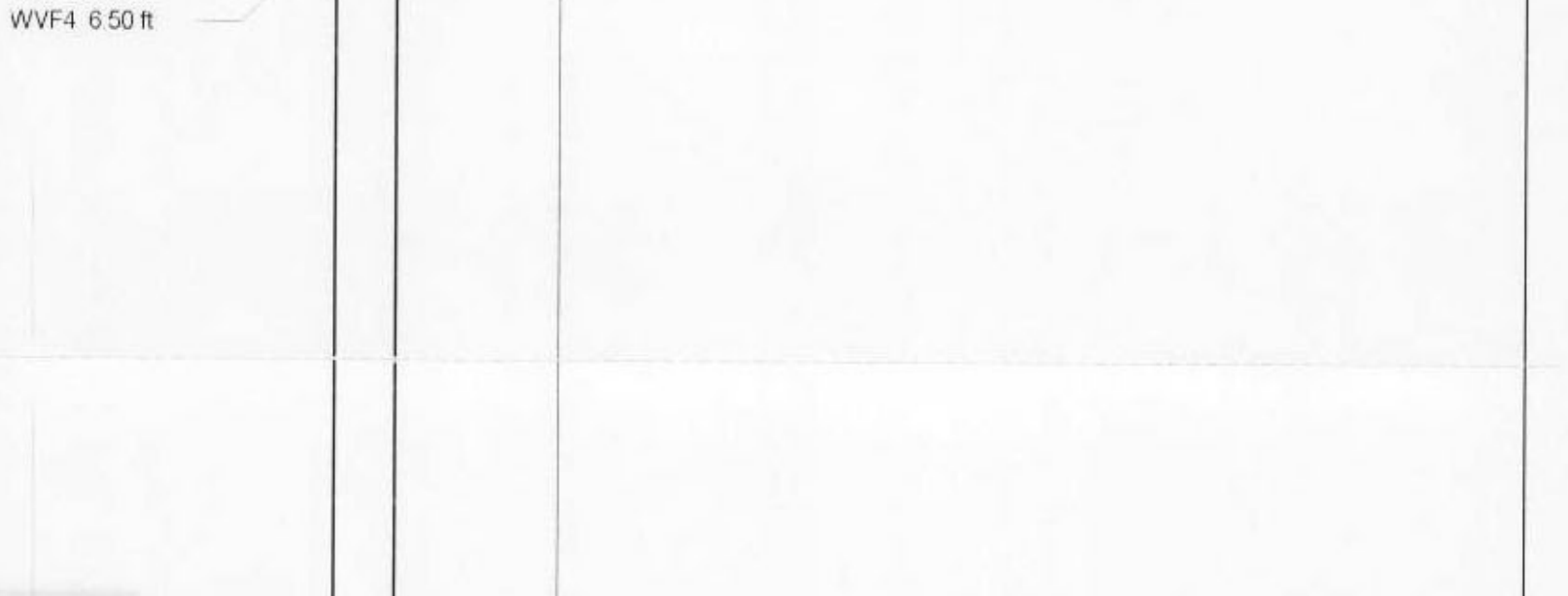
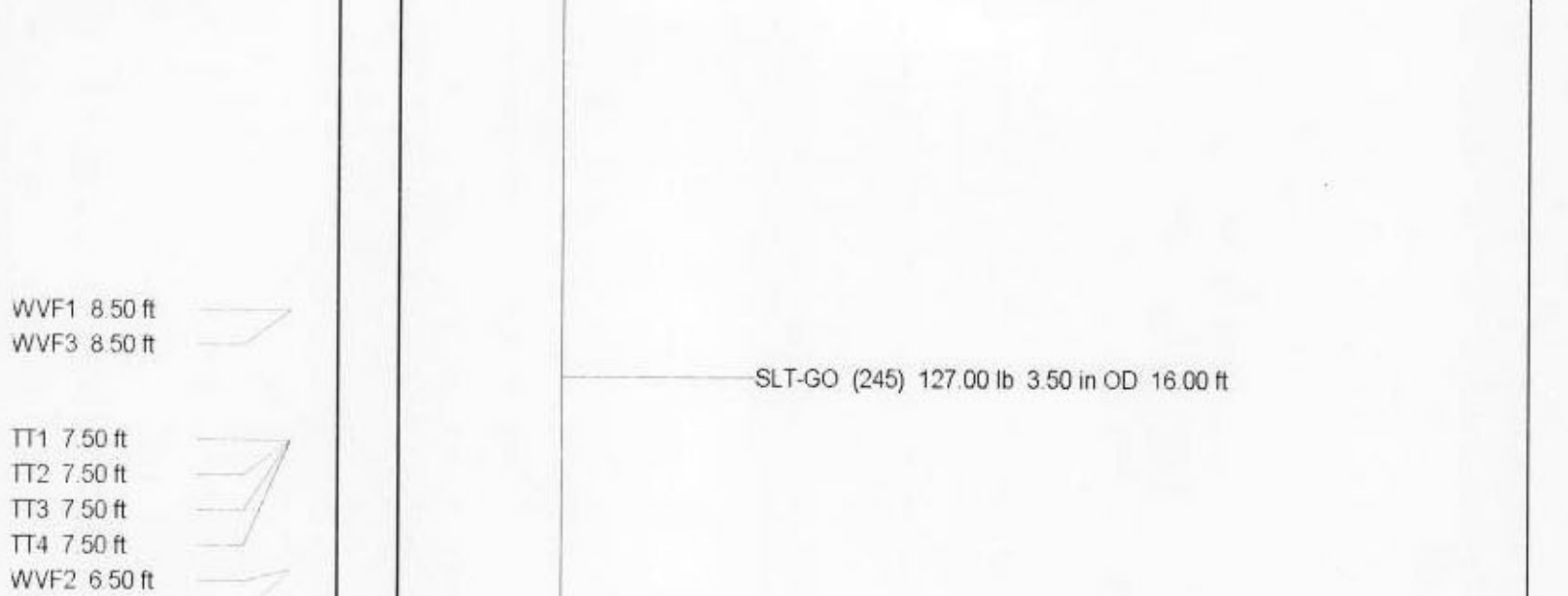
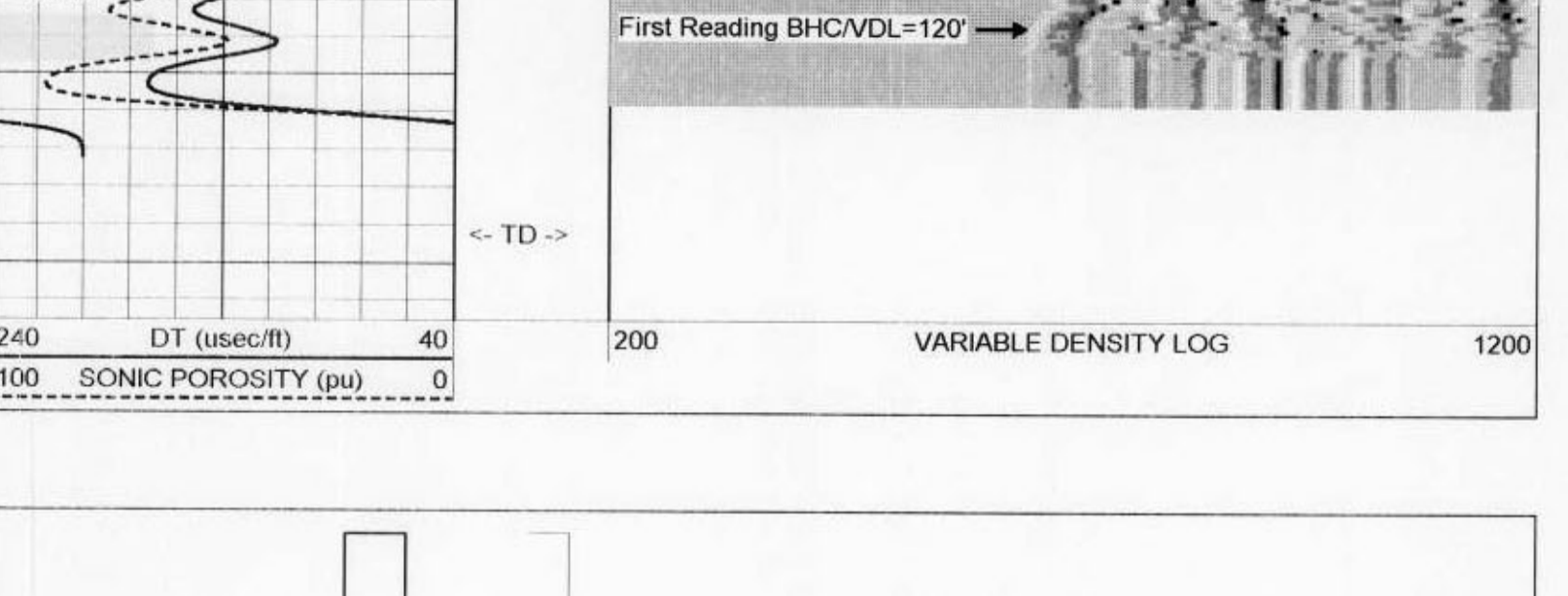
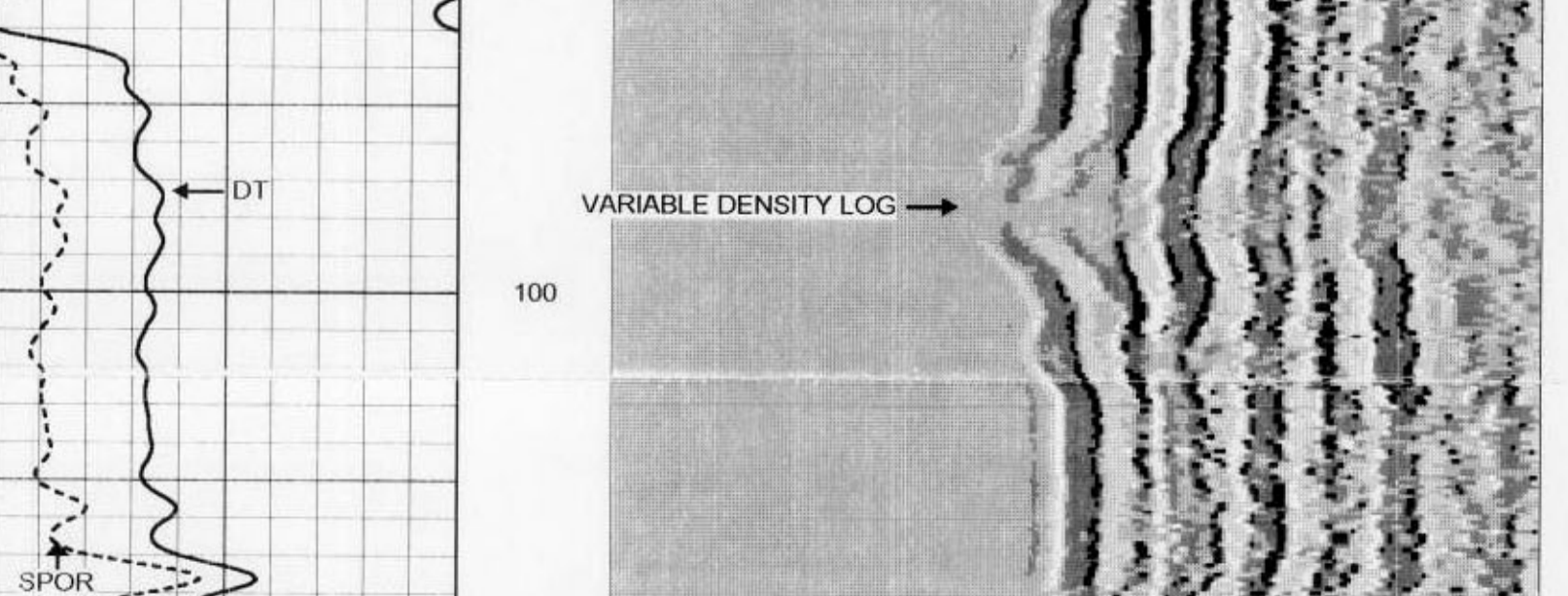
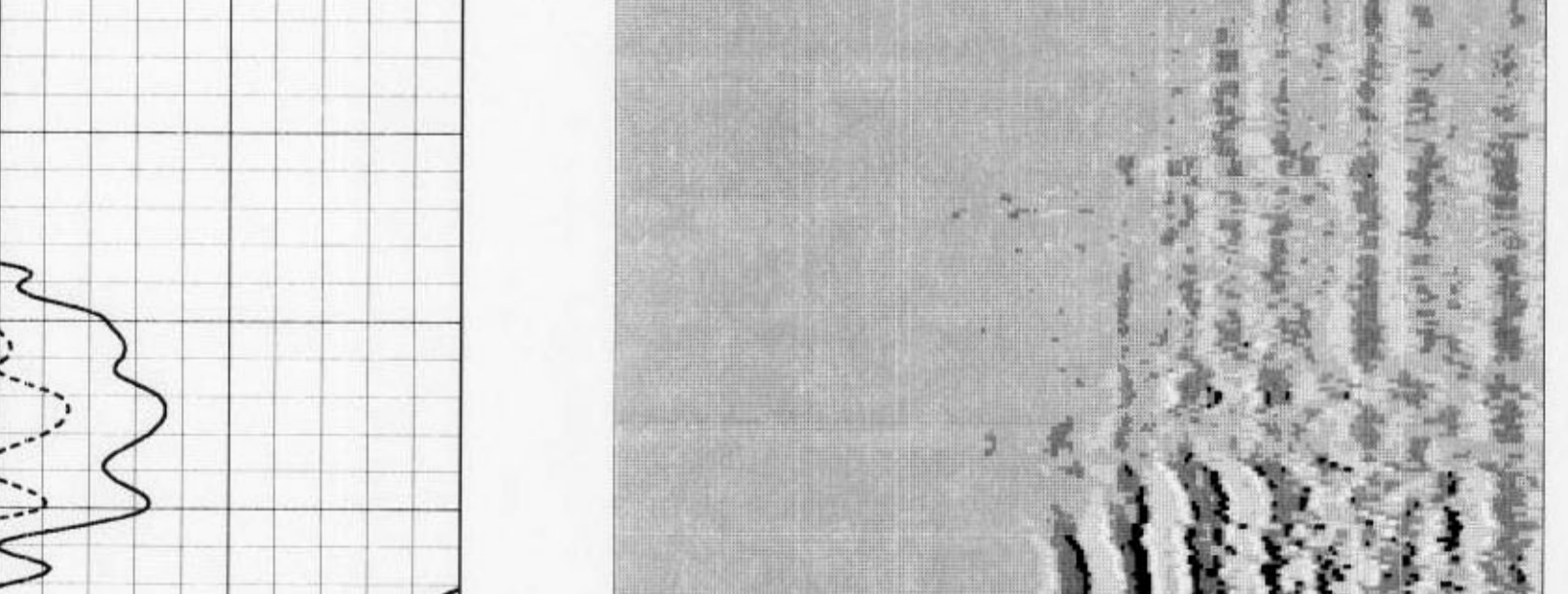
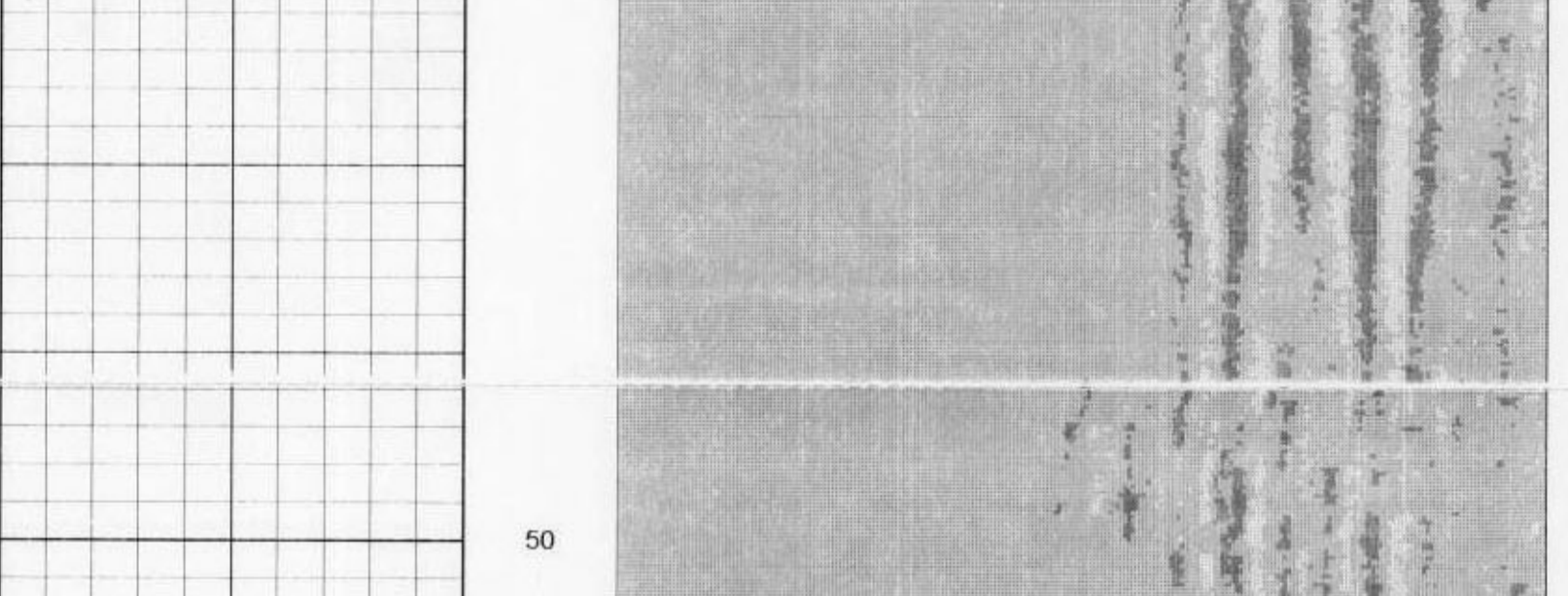
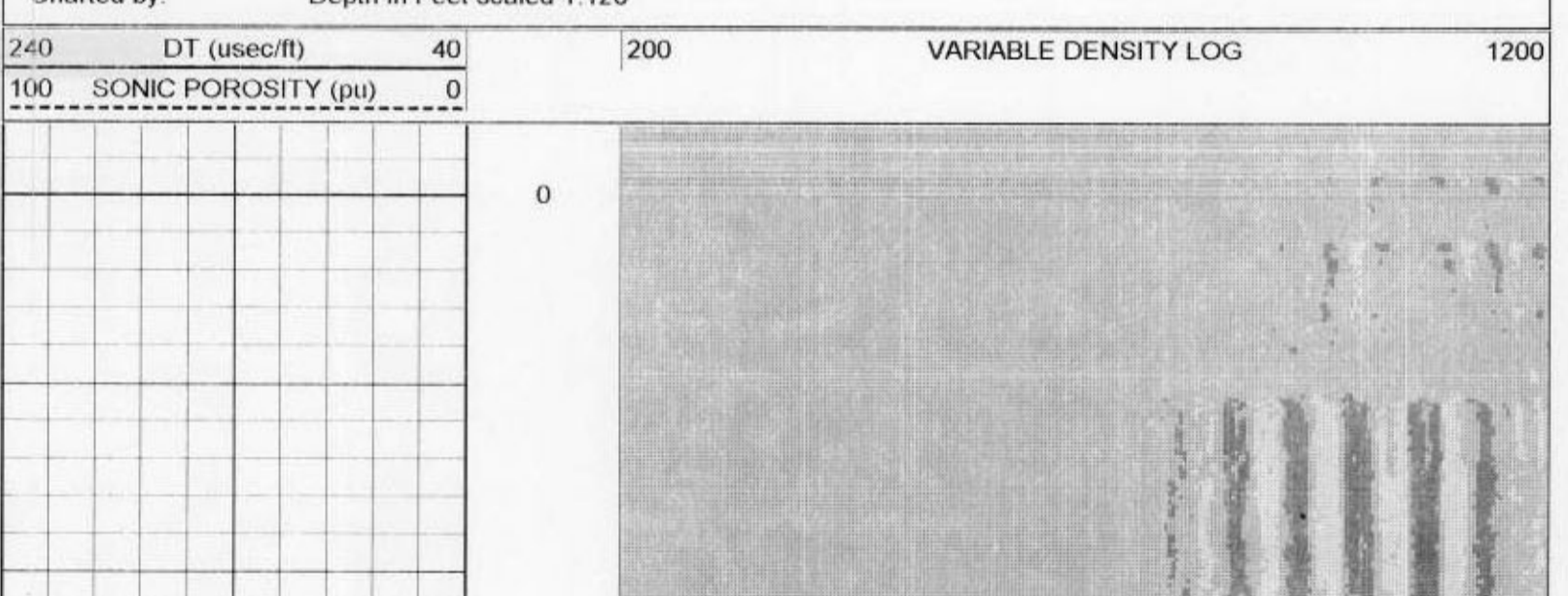
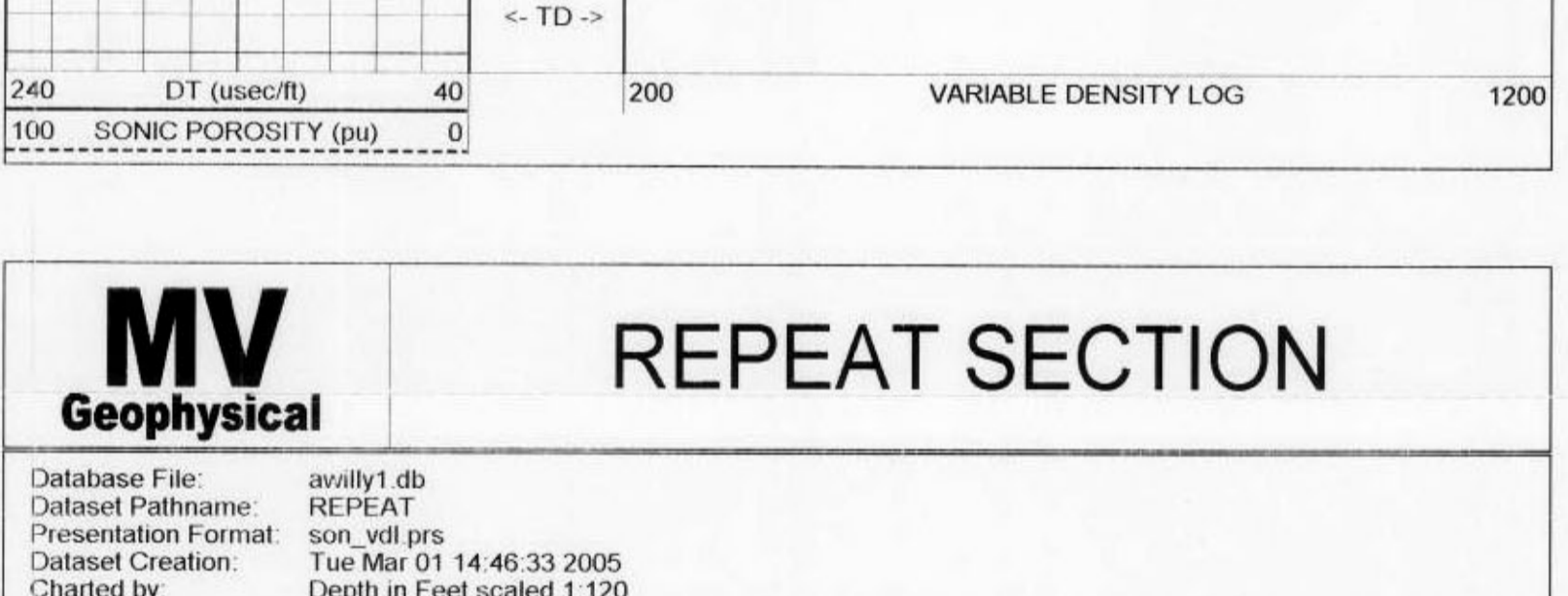
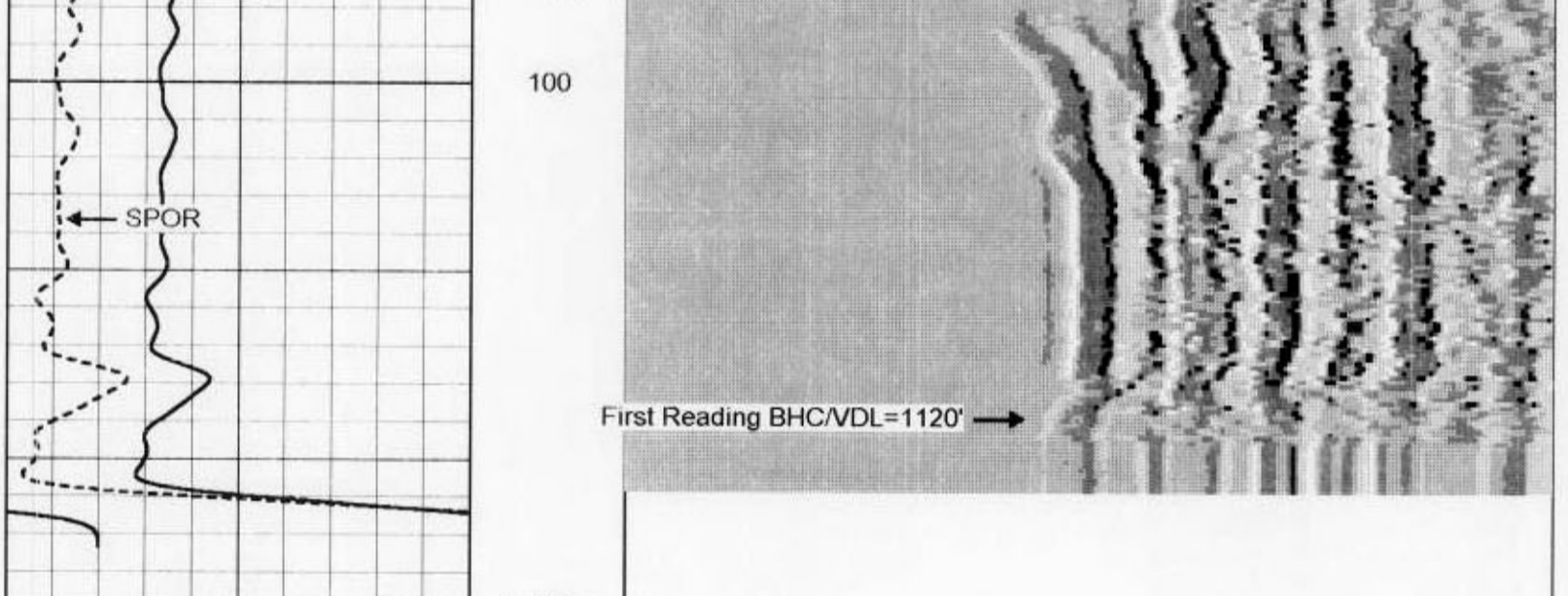
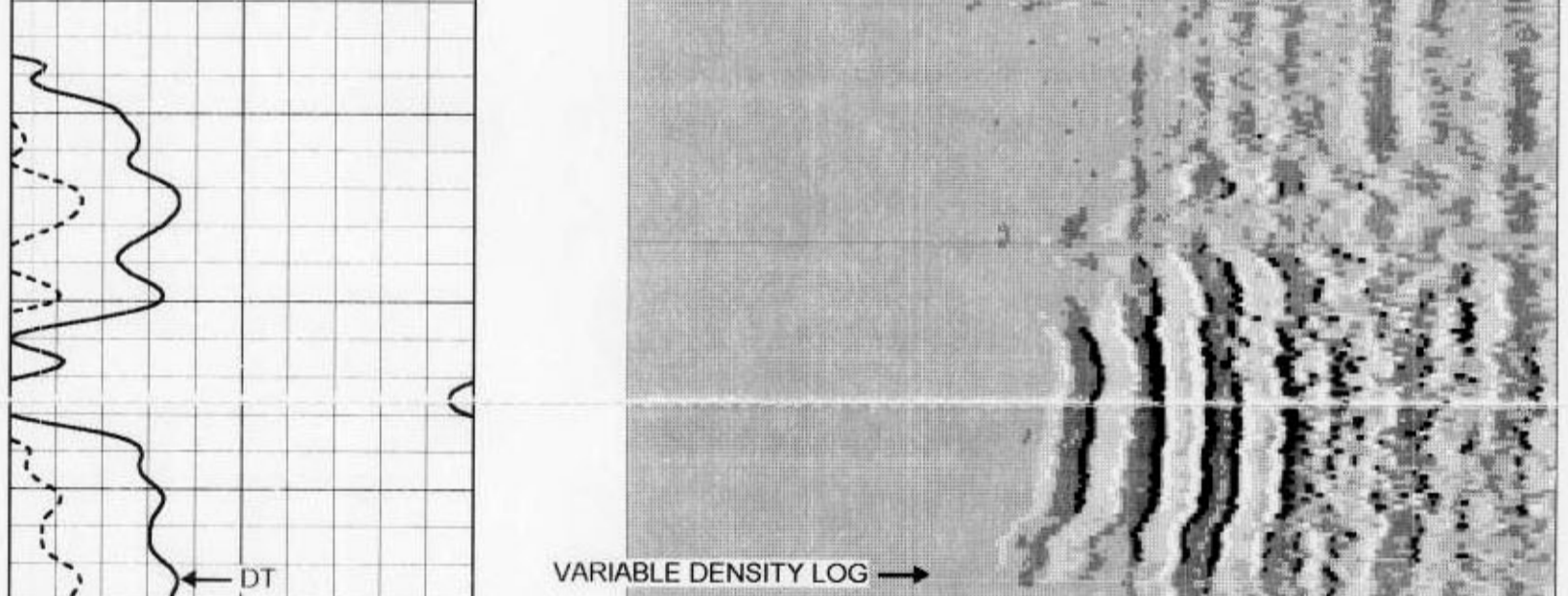
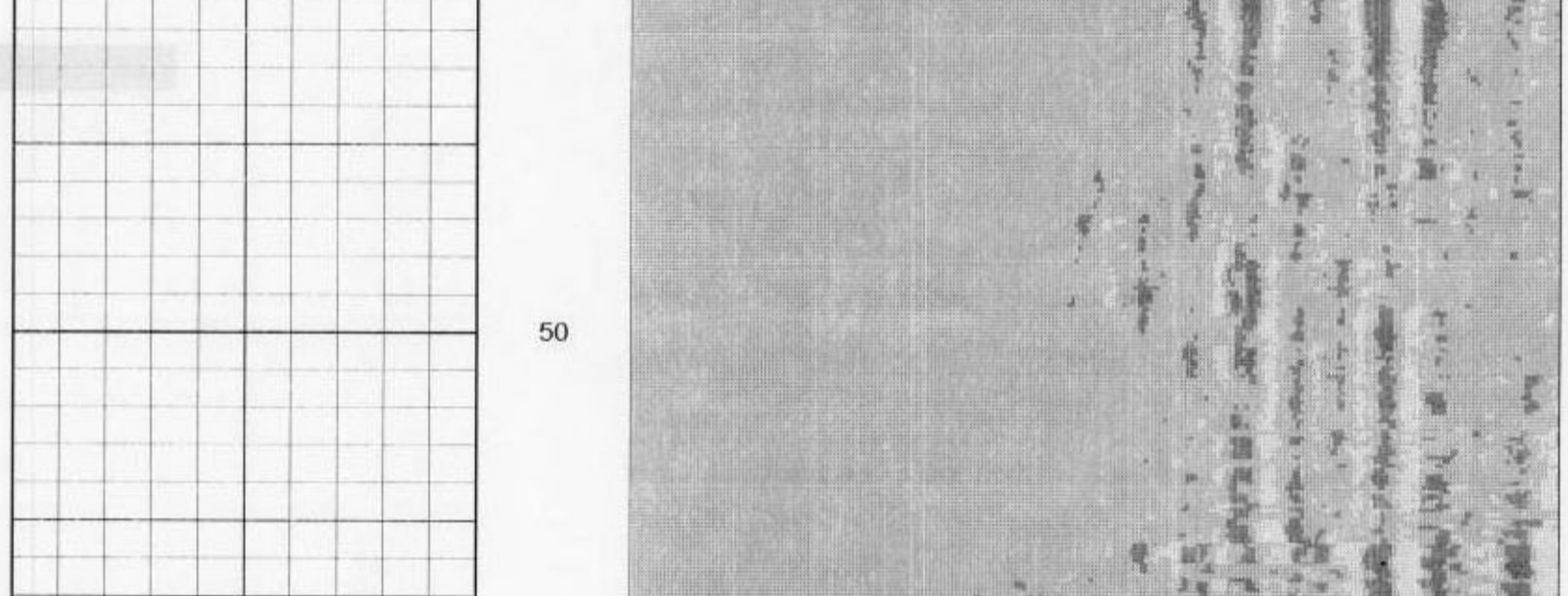
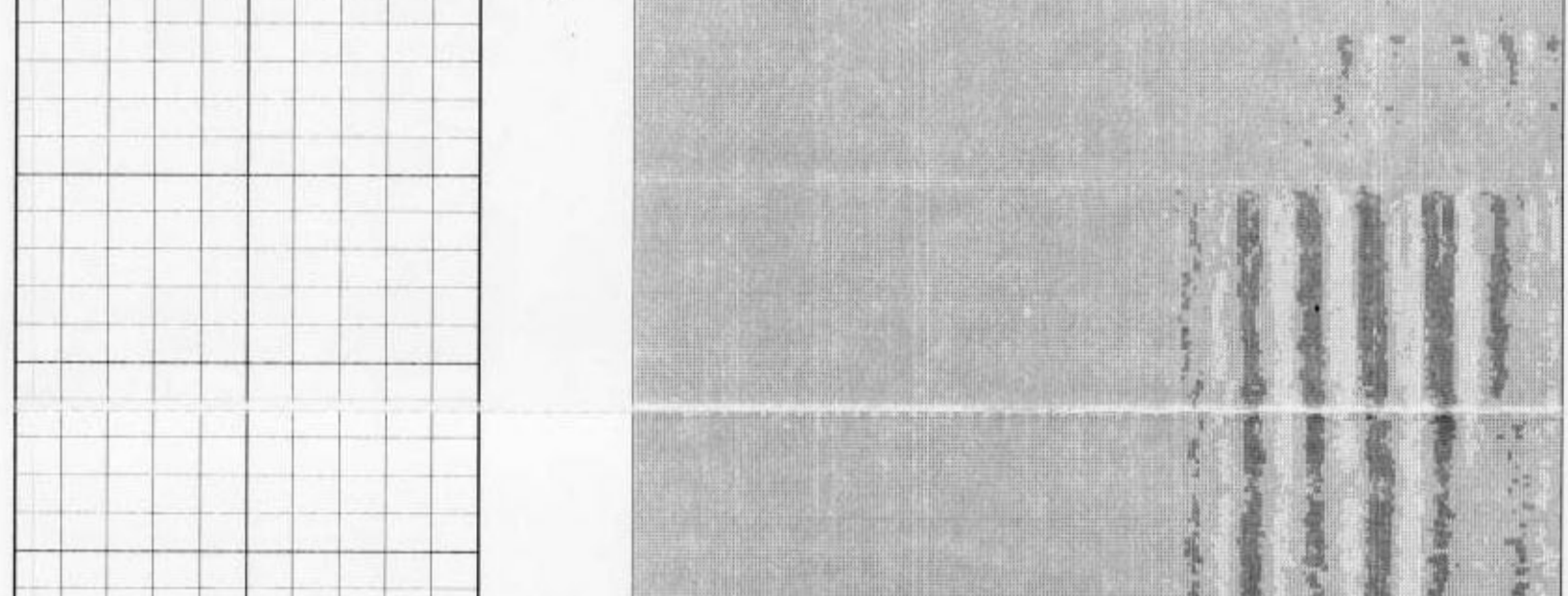
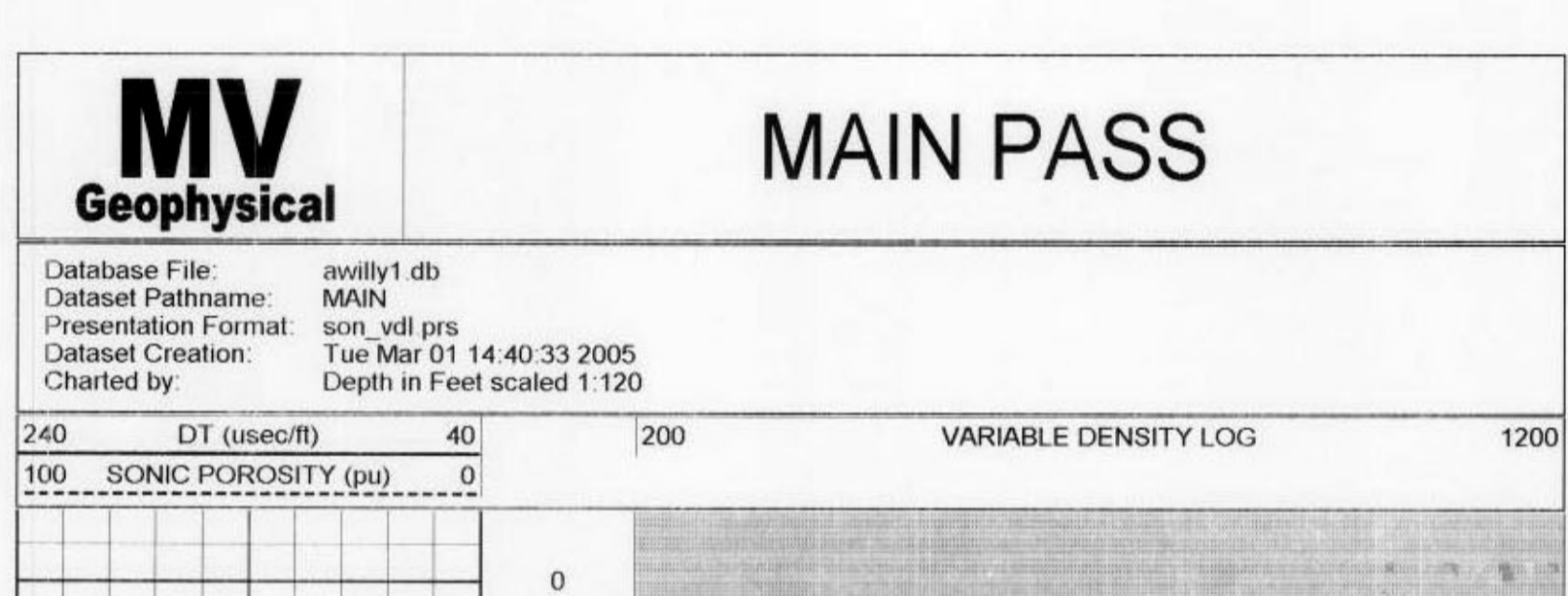
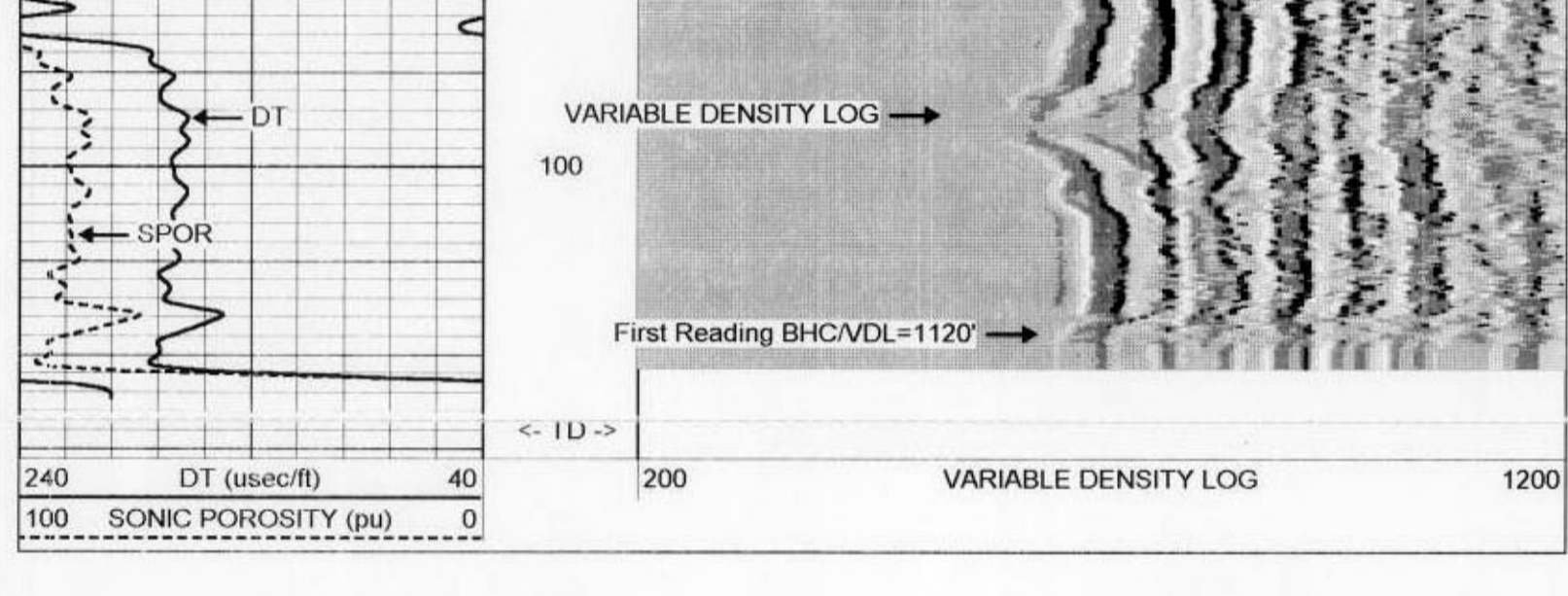
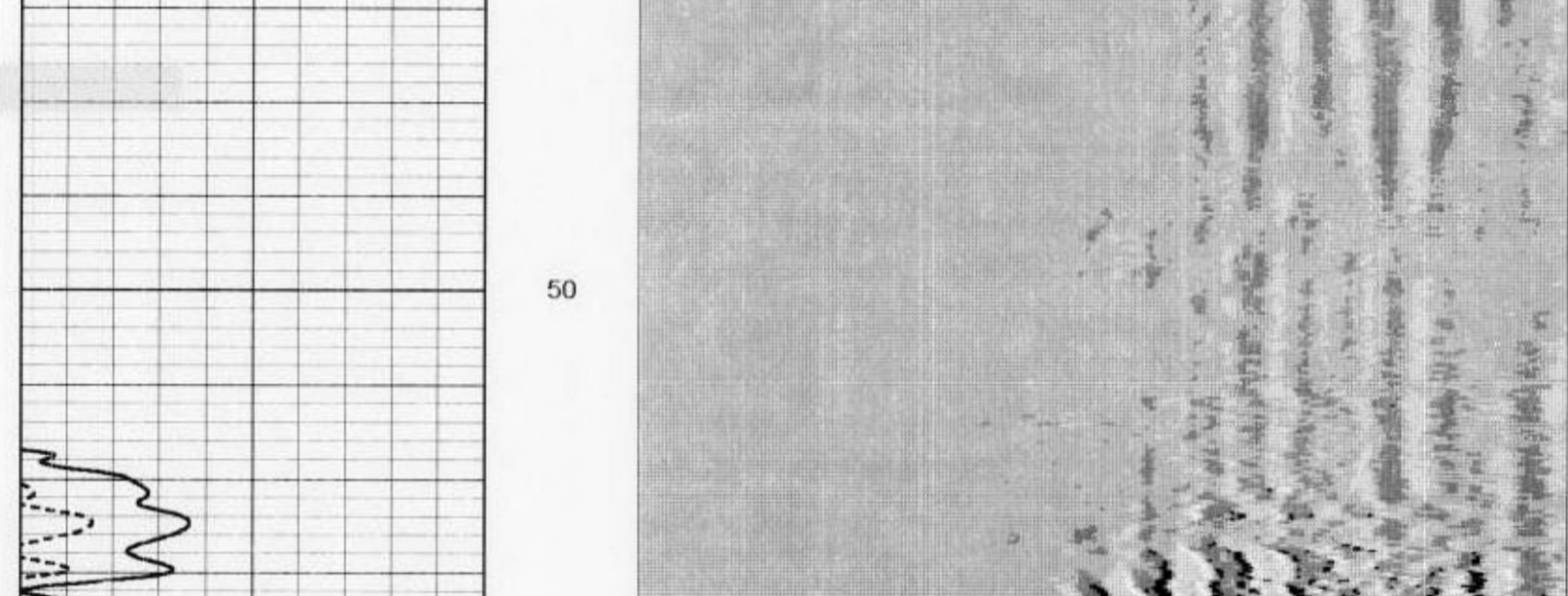
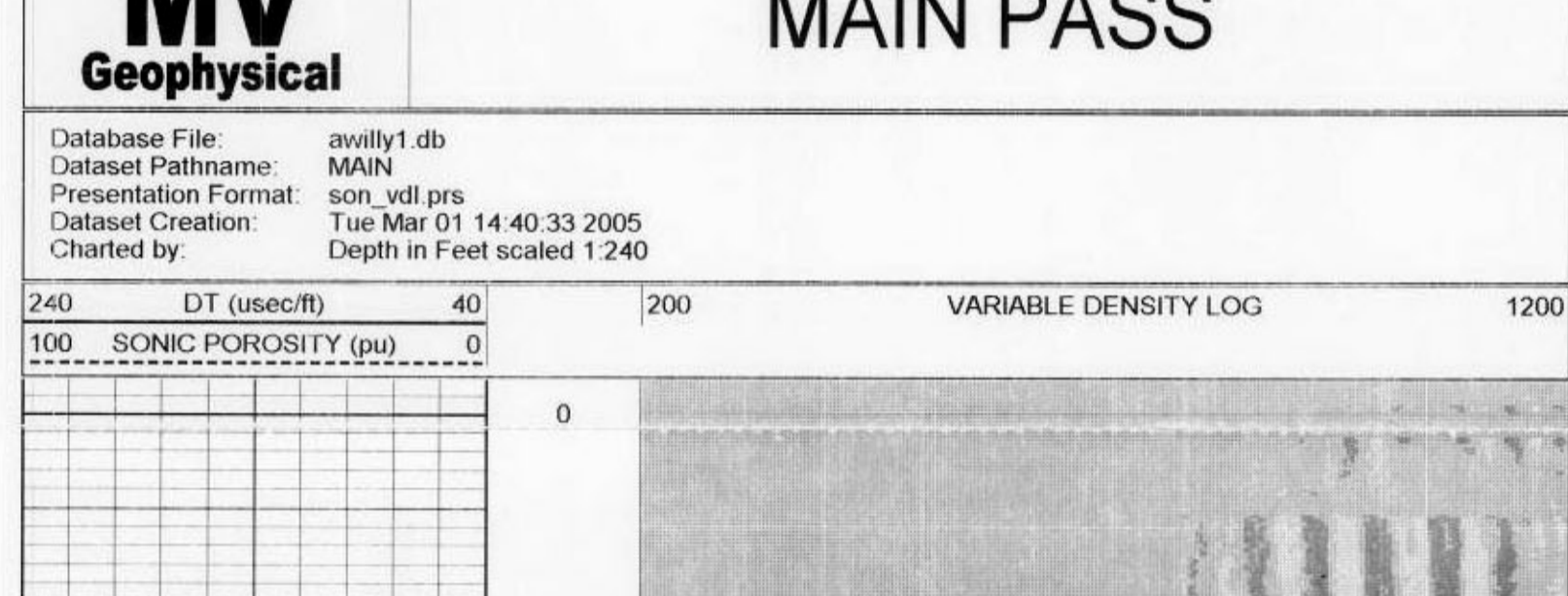
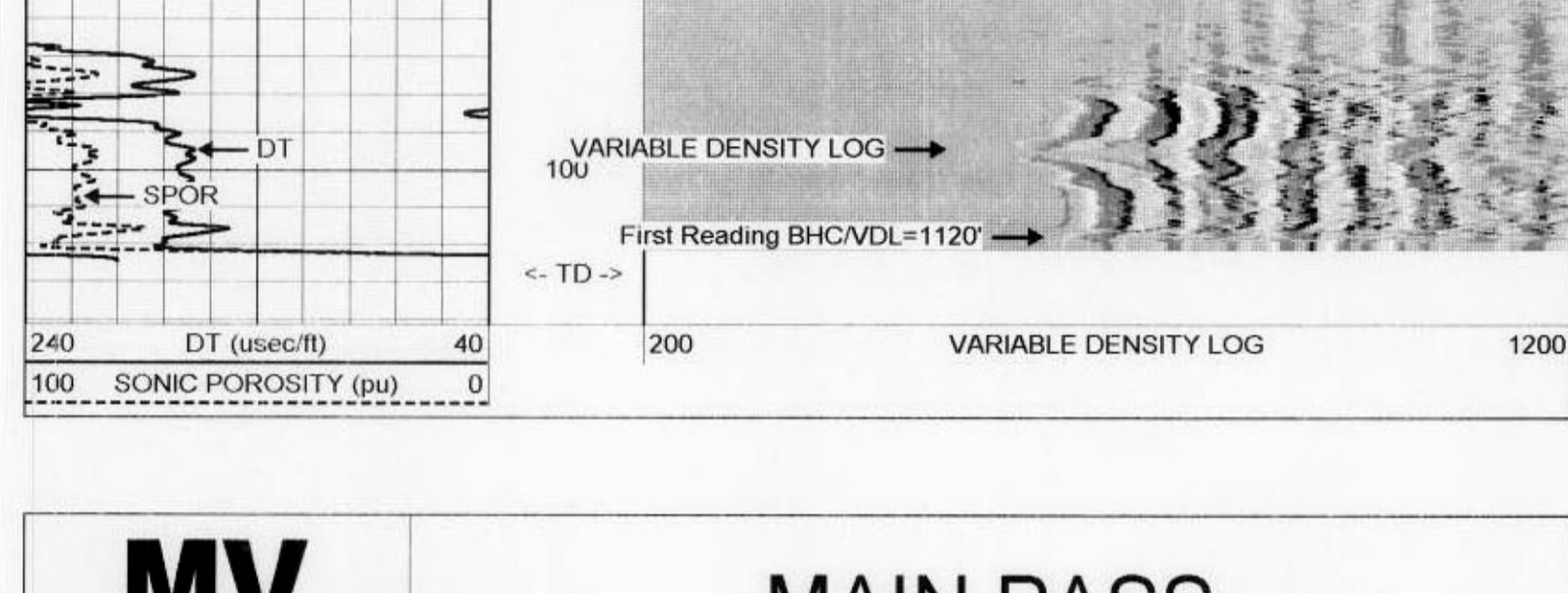
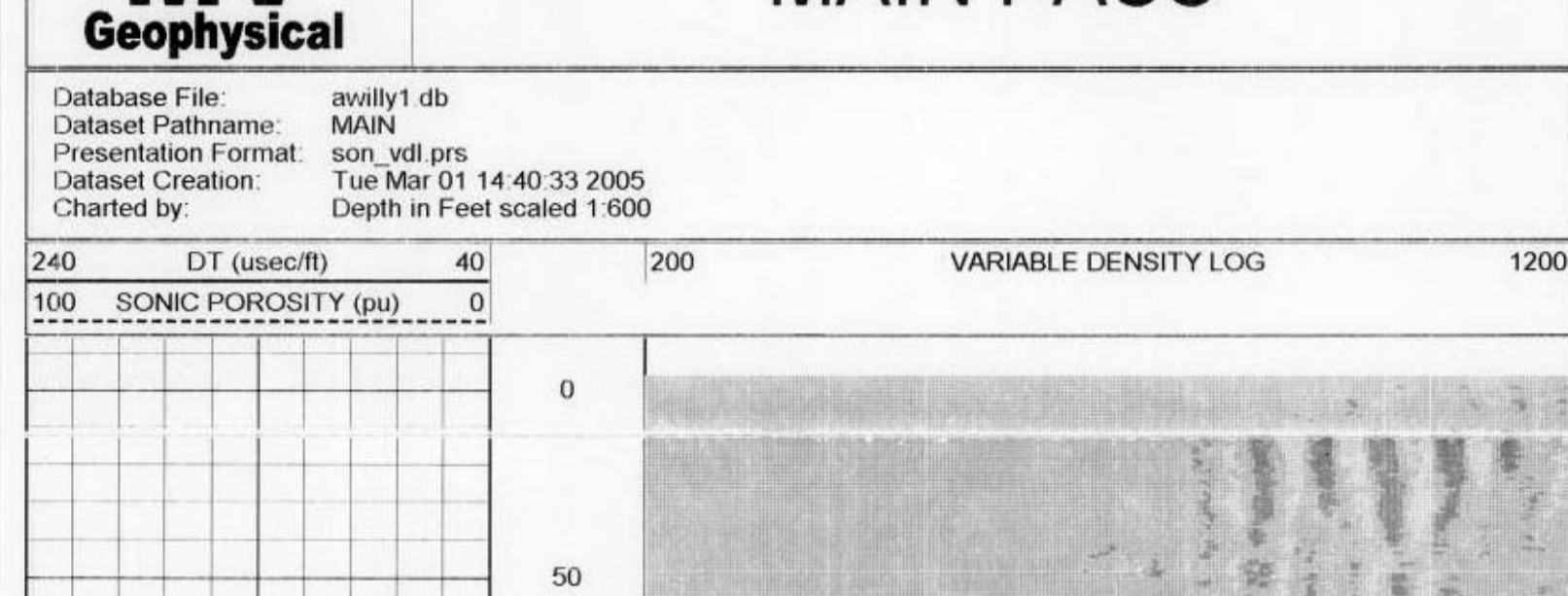
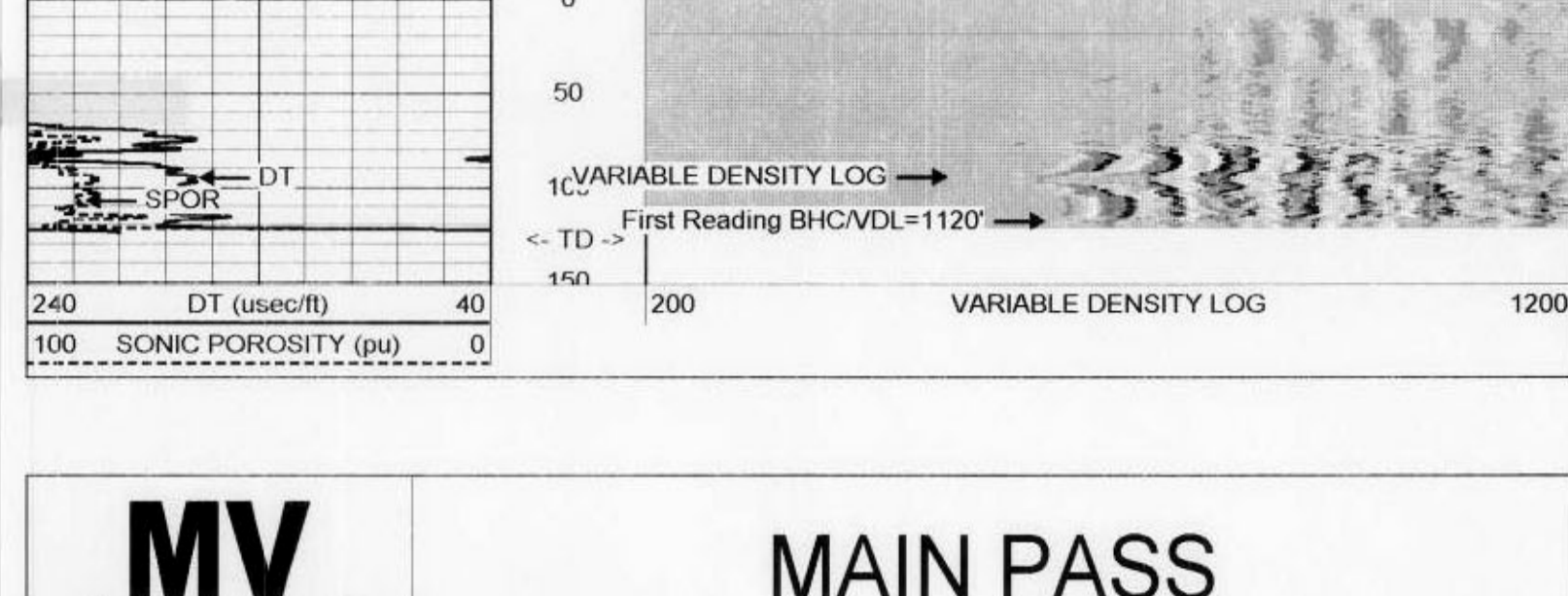
Company	SFWMD	Well	Golden Ox Site 6 Production Well
Field	Golden Ox	County	Henry
State/Prv	Florida	Location	T-46 R-32
Company	SFWMD	Well	Golden Ox Site 6 Production Well
Field	Golden Ox	County	Henry
State/Prv	Florida	Location	T-46 R-32
Permit/Datum	Ground Level	Elevation	
Log Measured From	Ground Level		
Dating Measured From	Ground Level		
Permit Number	TXAB33005		
Depth Other	130'		
Bottom Logbed Interval	128'		
Open Hole Size	7.875"		
Density / Viscosity	N/A		
Mass Recorded Temp.	NA		
Estimated Cement Top	NA		
Time Well Ready	13:30:37/015		
Time Logged at Bottom	14:30:37/015		
Estimated Turnover	11:30:37/015		
Recorded By	S Miller		
Missed By	J. (SFWMD)		
Run Number	1	Size	Weight
ONE	7.875"	130'	990#
Run Date	3/1/05	Size	Weight
Run Time	1:30	From	To
Run Location	130' 990#		
Run Production String			
Run Line			
Run Index No.	20050539		
P.O. #		Job No.	
		FIELD PRINT	

All interpretations are opinions based on inferences from electrical or other measurements and we cannot and do not guarantee the accuracy or correctness of any interpretation, and we shall not, except in the case of gross or willful negligence on our part, be liable or responsible for any loss, costs, damages, or expenses incurred or sustained by anyone resulting from any interpretation made by any of our officers, agents or employees. These interpretations are also subject to our general terms and conditions set out in our current Price Schedule.

Comments

Sonic Porosity was run on a Limestone Matrix (=47.5)

Drilling Contractor: Advanced Well Drilling



Dataset: run1/pass8
 Total Length: 16.00 ft
 Total Weight: 127.00 lb
 O.D.: 3.50 in

- WVF1 8.50 ft
- WVF3 8.50 ft
- TT1 7.50 ft
- TT2 7.50 ft
- TT3 7.50 ft
- TT4 7.50 ft
- WVF2 6.50 ft
- WVF4 6.50 ft

SLT-GO (245) 127.00 lb 3.50 in OD 16.00 ft