

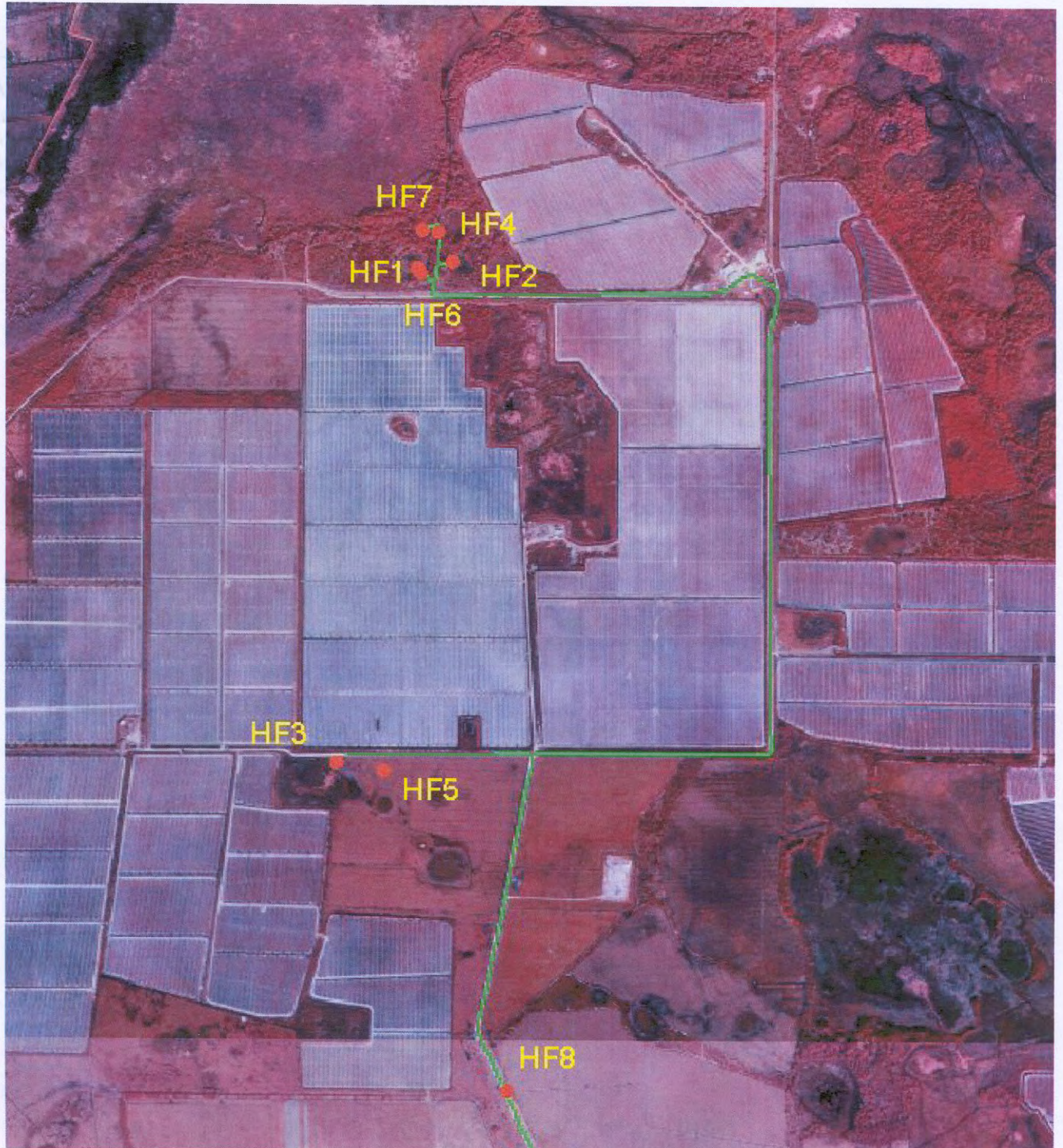
Subject: (no subject)

Date: Mon, 21 Jul 2003 15:26:18 -0400

From: April Huffman <ahuff@sfwmd.gov>

Organization: South Florida Water Management District

To: Elvie Ebanks <eebanks@sfwmd.gov>



LETTERS TO ESTAB VERT CONTROL FOR THE
 WELLS IN COUNCIL & LEE CO. FOR AN
 ISOLATED DELTAIDS STUDY FOR THE DIVISION.

- Refs
- 1) Memo to Keith Zouhar to Rick Barnes 9-15-98
 - 2) Bm - DELTAID SHEET
 - 3)

STA	+	HC	-	Elev	Bm
Bm					Bm 21.19 IND 1920
	4.66 2.60	25.85			
10			4.85 2.41	21.00	
	4.66 2.60	25.66			
10			5.24 2.02	20.42	
	5.00 2.26	25.42			
10			4.65 2.61	20.77	
	4.95 2.31	25.72			
10			4.50 2.68	21.14	
	4.52 2.74	25.66			

LEVELS CONT'D P. 57

A Hudson
 T Graham
 P Morrissette

(?) ~~TTT~~
 S 24 T 55 R 40

Comments

Bm IND 6432 As per Receipt Sheet.

Levels Cont'd Pg. 58

STA	+	AE	-	total	Sum
		25.66			
TP			5.38		
	4.83		1.88	20.28	
	2.43	25.11			
TP			4.45		
			2.81	20.66	
	5.01				
	2.25	25.67			
TP			4.69		
			2.57	20.98	
	4.62				
	2.64	25.60			
TP			5.19		
			2.07	20.41	
	4.54				
	2.72	24.95			
TP			4.86		
			2.40	20.09	
	4.92				
	2.34	25.01			
TP			4.59		
			2.67	20.42	
	5.06				
	2.20	25.48			
TP			4.86		
			2.40	20.62	
	5.18				
	2.08	25.80			
TP			4.31		
			2.95	21.47	
	4.86				
	2.40	26.35			

Levels Cont'd Pg. 60

~ ~ ~ ~

Comments

J. Hodson
 X. GRAHAM
 W. MORRISON

[Handwritten signature]

Levels Contd Fr 59

STA	HI	BS	IS	BM
	20.35	-	21.80	BM
TP	4.98 2.28	20.78	4.55 2.71	21.80
BM			5.02 2.24	21.76 21.76
		<u>RETURN</u>	<u>LEVELS</u>	
	4.93 2.33	20.69		
TP	4.49 2.77	20.29	4.89 2.37	21.80
TP	4.31 2.95	25.70	4.84 2.42	21.45
TP	4.83 2.43	25.45	5.14 2.12	20.62
TP	4.55 2.71	25.01	4.92 2.27	20.46
TP	5.05 2.21	25.15	4.91 2.35	20.10

RETURN LEVELS CONTD FR 61

Comments

H Hudson
T Graham
P Morrisset

22.007 NGVD29
20.697 NAVD88

BM "CC" A S.I.D.M.D ALUM CAP SET IN A 1 1/4" I.P.P.C. SET IN CONC. 0.2' BELOW GROUND. MARK IS LOCATED IN THE N.W. COR OF THE INTERSECTION OF EVERGLADES BLD. & 62ND N.E. AVE. ± 1.5 MILE SOUTH OF CR. 846 ON EVERGLADES BLD. 17' WEST OF E.O.P. EVERGLADES BLD, 21' NORTH OF E.O.P. 62ND N.E. AVE. STAMPED "BM CC 1998" SEC. 32 TSP 475 T&E. 236

62ND Ave. NE

RETURN LEVELS CONT'D F. 60

STA	+	HE	-	Red.	Bum
		25.15			
TP			4.79		
			2.47	20.36	
	5.24				
	2.02	25.00			
TP			4.66		
			2.60	20.94	
	4.51				
	2.75	25.45			
TP			4.83		
			2.43	20.62	
	4.40				
	2.80	25.02			
TP			4.81		
			2.45	20.21	
	5.43				
	1.23	25.64			
TP			4.54		
			2.72	21.10	
	4.60				
	2.66	25.70			
TP			4.96		
			2.30	20.74	
	4.61				
	2.65	25.35			
TP			4.97		
			2.29	20.38	
	5.13				
	2.13	25.51			
TP			4.60		
			2.66	20.91	
	4.92				
	2.34	25.53			
Bm			4.64		
			2.62	21.19	21.19

END RETURN LEVELS

Comments

M HURSON
 T GRAHAM
 & MORRISON

Bm WDW 4632 F. 58 (Error 0.00')

LEVELS CONT'D

STA	+	VE	-	ELVD.	Bm
Bm	5.07 2.19	26.83			2.76
TP			4.74 2.52	22.09	
TP	4.45 2.81	26.54			
TP			4.51 2.75	22.03	
TP	4.78 2.48	26.81			
TP			4.60 2.66	22.21	
TP	4.55 2.71	26.76			
TP			4.75 2.52	22.01	
TP	4.77 2.49	26.75			
TP			4.37 2.89	22.41	
TP	4.31 2.95	26.72			
TP			4.19 3.07	22.53	
TP	4.65 2.61	27.18			
TP			4.65 2.61	22.53	
TP	4.68 2.58	27.21			

LEVELS CONT'D FB 03
~~~~~

S 32 T 47 R 28

COMMENTS

Bm 'CC' 2.40

M. Hudson  
T. Morrison  
& Brennan



LIKENS CONT'D P. 02

| STA | +            | HE    | -            | INCL. | BOM |
|-----|--------------|-------|--------------|-------|-----|
|     |              | 27.21 |              |       |     |
| TP  |              |       | 4.71<br>2.55 | 22.50 |     |
|     | 5.05<br>2.21 | 27.55 |              |       |     |
| TP  |              |       | 4.70<br>2.50 | 22.85 |     |
|     | 4.58<br>2.68 | 27.43 |              |       |     |
| TP  |              |       | 4.29<br>2.97 | 23.14 |     |
|     | 4.57<br>2.69 | 27.71 |              |       |     |
| TP  |              |       | 4.55<br>2.71 | 23.16 |     |
|     | 4.50<br>2.76 | 27.66 |              |       |     |
| TP  |              |       | 4.76<br>2.50 | 22.90 |     |
|     | 4.34<br>2.92 | 27.24 |              |       |     |
| TP  |              |       | 4.18<br>3.08 | 23.06 |     |
|     | 4.85<br>2.41 | 27.91 |              |       |     |
| TP  |              |       | 4.97<br>2.29 | 22.94 |     |
|     | 4.04<br>2.62 | 27.58 |              |       |     |
| TP  |              |       | 4.46<br>2.80 | 23.12 |     |
|     | 4.43<br>2.83 | 27.55 |              |       |     |

LIKENS CONT'D P. 04

~~~~~

Comments

M. Hodson
T. Molesse
& Graham

[Red signature]

Levels cont'd 10-21-98

STA	+	HI	-	LI	Bm
		27.55			
IP			4.80	22.75	
	4.72	27.47			
	2.54				
IP			4.69	22.78	
	4.68	27.46	2.57		
	2.58				
IP			4.26	23.20	
	5.06	28.26	3.00		
	2.20				
IP			4.47	23.79	
	5.31	29.10	2.79		
	1.95				
Bm			5.69	23.41	
			1.57		

~~23.42~~
(205)

RETURN LEVELS

	5.65	29.06			
	1.61				
IP			5.27	23.79	
	4.54	28.33	1.99		
	2.72				

RETURN Levels cont'd 10-21-98

Comments

M Hudson
X MOCESSED
of GEDHAM

23.667 NGVD29
22.357 NAVD88

Bm "CCI" SET. A B.F.W.M.D ALUM CAP IN A
1 1/4" I.P. SET IN CONC. 0.3' BELOW GROUND MARK
IS IN THE NORTH TOP OF C.R. BAW, IN LINE
W/ THE PROSPECTED E OF EVERGLADES BWD.
STAMPED "Bm CCI 1998" IN
SIL: 89 TOP: 475 REL: 282

RETURN LAKES CONTD F. P. 14

STA	+	HI	-	Elev.	Run
		28.33			
TP			5.14	23.19	
	4.50 2.76	27.69			
TP			4.93 2.33	22.76	
	4.72 2.54	27.48			
TP			4.75 2.51	22.73	
	4.61 2.65	27.34			
TP			4.25 3.01	23.09	
	4.55 2.71	27.64			
TP			4.73 2.53	22.91	
	5.08 2.18	27.99			
TP			4.90 2.30	23.03	
	4.12 3.14	27.15			
TP			4.30 2.90	22.85	
	4.53 2.73	27.38			
TP			4.27 2.99	23.11	
	4.67 2.59	27.78			

RETURN LAKES CONTD F. P. 16

Comments

BY HUDSON
T MORRISON
of GRAHAM

RETURN LEVELS CONTD RE P. 65

STA	+	HE	-	Elev.	B.M.
		27.78			
TP			4.69 2.57	23.09	
	4.36 2.90	27.45			
TP			4.65 2.61	22.80	
	4.44 2.82	27.24			
TP			4.81 2.45	22.43	
	4.72 2.54	27.15			
TP			4.66 2.60	22.49	
	4.58 2.68	27.07			
TP			4.55 2.71	22.52	
	4.30 2.90	26.82			
TP			4.47 2.79	22.35	
	4.53 2.73	26.88			
TP			4.92 2.34	21.96	
	4.70 2.50	26.66			
TP			4.50 2.76	22.16	
	4.57 2.69	26.73			

RETURN LEVELS CONTD RE P. 67

~~~~~

Comments

at Hossen  
X Mollissey  
of Bepham

*[Handwritten signature]*



RETURN LEVELS CONTD TO Pg 66

| STA | +    | Hz    | -    | Elev. | Bm    |
|-----|------|-------|------|-------|-------|
|     |      | 20.73 |      |       |       |
| TP  |      |       | 4.77 | 21.90 |       |
|     | 4.62 |       | 2.49 |       |       |
|     | 2.64 | 20.58 |      |       |       |
| TP  |      |       | 4.55 | 22.03 |       |
|     |      |       | 2.71 |       |       |
|     | 4.61 |       |      |       |       |
|     | 2.65 | 20.64 |      |       |       |
| Bm  |      |       | 4.90 | 21.74 | 21.70 |
|     |      |       | 2.36 |       |       |

END RETURN LEVELS

LEVELS CONTD TO Bm CC1 TO Tm CC2

|    |      |       |      |       |       |
|----|------|-------|------|-------|-------|
| Bm |      |       |      |       | 23.42 |
|    | 4.78 |       |      |       | 405   |
|    | 2.48 | 28.20 |      |       |       |
| TP |      |       | 3.98 |       |       |
|    |      |       | 3.28 | 24.22 |       |
|    | 4.62 |       |      |       |       |
|    | 2.64 | 28.84 |      |       |       |
| TP |      |       | 4.70 |       |       |
|    |      |       | 2.50 | 24.14 |       |
|    | 4.50 |       |      |       |       |
|    | 2.70 | 28.64 |      |       |       |

LEVELS CONTD TO Pg 68

Comments

M Hudson  
T MOLLISSEY  
of GRAHAM

Bm "CC" 28.00 (Elev 0.02')

S 29 T 47 R 28

Bm CC1 Pa 64

Handwritten initials



LEVELS CONT'D FE P. 69

| STA | +            | HC    | -            | ELEV. | Bm                         |
|-----|--------------|-------|--------------|-------|----------------------------|
|     |              | 28.64 |              |       |                            |
| TP  |              |       | 4.28<br>2.98 | 24.36 |                            |
|     | 4.40<br>2.86 | 28.76 |              |       |                            |
| TP  |              |       | 4.80<br>2.46 | 23.96 |                            |
|     | 4.80<br>2.40 | 28.76 |              |       |                            |
| TP  |              |       | 4.52<br>2.74 | 24.24 |                            |
|     | 4.68<br>2.53 | 28.92 |              |       |                            |
| TP  |              |       | 4.65<br>2.61 | 24.27 |                            |
|     | 4.39<br>2.87 | 28.66 |              |       |                            |
| TP  |              |       | 4.29<br>2.97 | 24.37 |                            |
|     | 4.66<br>2.60 | 29.03 |              |       |                            |
| TP  |              |       | 4.50<br>2.76 | 24.53 |                            |
|     | 4.46<br>2.80 | 28.99 |              |       |                            |
| TBM |              |       | 4.01<br>2.25 | 24.98 | <del>24.985</del><br>(405) |

RETURN LEVELS

|      |       |
|------|-------|
| 3.87 | 28.85 |
| 3.39 |       |

RETURN LEVELS CONT'D P. 69

Comments

At Wood  
X Genbank  
φ Modissey

25.232 NGVD29  
23.922 NAVD88

TBM "002" A LARGE PK NAIL w/ WOOD BEASS DISC.  
SET IN NORTH EDGE OF PAV. OF C.R. BRIDGE, 0.1  
MILE EAST OF EVERGLADES BUD. IN  
SEC 29 T1P 47S R2E 28E

*[Handwritten signature]*



RETURN LEVELS CONTROL Pt. 70 08

| STA | +    | HC    | -    | WEL.  | Bm    |
|-----|------|-------|------|-------|-------|
|     |      | 29.85 |      |       |       |
| TR  |      |       | 4.32 | 24.53 |       |
|     | 4.38 |       | 2.94 |       |       |
|     | 2.88 | 28.91 |      |       |       |
| TR  |      |       | 4.22 | 24.69 |       |
|     | 3.99 |       | 3.04 |       |       |
|     | 3.27 | 28.68 |      |       |       |
| TR  |      |       | 4.44 | 24.24 |       |
|     | 4.86 |       | 2.82 |       |       |
|     | 2.40 | 29.10 |      |       |       |
| TR  |      |       | 4.72 | 24.38 |       |
|     | 4.52 |       | 2.54 |       |       |
|     | 2.74 | 28.90 |      |       |       |
| TR  |      |       | 5.04 | 23.86 |       |
|     | 4.74 |       | 2.22 |       |       |
|     | 2.52 | 28.60 |      |       |       |
| TR  |      |       | 4.23 | 24.37 |       |
|     | 3.57 |       | 3.03 |       |       |
|     | 3.69 | 27.94 |      |       |       |
| TR  |      |       | 4.14 | 23.80 |       |
|     | 4.56 |       | 3.12 |       |       |
|     | 2.70 | 28.36 |      |       |       |
| TR  |      |       | 4.17 | 24.19 |       |
|     | 3.95 |       | 3.09 |       |       |
|     | 3.31 | 28.14 |      |       |       |
| Bm  |      |       | 4.73 | 23.41 | 23.42 |
|     |      |       | 2.53 |       |       |

END RETURN LEVELS

Comments

W HUDSON  
T GRAHAM  
C MORRISSEY

Bm 221 Pt. 64 (2202 0.01)

Red signature



LEVELS CONTD Fr. TBM 002, To Bm 003

| STA | +            | HE    | -            | Elev. | Bm             |
|-----|--------------|-------|--------------|-------|----------------|
| Bm  | 4.43<br>2.83 | 29.42 |              |       | 24.99<br>(205) |
| TP  | 4.72<br>2.54 | 29.50 | 4.04<br>2.62 | 24.78 |                |
| TP  | 4.85<br>2.41 | 29.45 | 4.90<br>2.36 | 24.60 |                |
| TP  | 4.83<br>2.43 | 29.44 | 4.84<br>2.42 | 24.61 |                |
| TP  | 4.65<br>2.61 | 29.52 | 4.57<br>2.69 | 24.87 |                |
| TP  | 4.73<br>2.53 | 29.73 | 4.52<br>2.74 | 25.00 |                |
| TP  | 4.90<br>2.36 | 29.83 | 4.80<br>2.46 | 24.93 |                |
| TP  | 3.78<br>3.48 | 29.19 | 4.42<br>2.84 | 25.41 |                |

LEVELS CONTD Fr. 7  
~~~~~

S 29 T 47 R 28

COMMENTS

TBM 002 To 003

H. HUDSON
T. MORRISSEY
G. GRAHAM

Levels Cont'd Pg. 70

STA	LE	HT	BM
		29.19	
TP	4.25 3.01	29.27	4.17 3.09 25.02
TP	5.20 2.06	30.44	4.03 3.23 25.24
TP	4.31 2.95	30.05	4.10 3.16 26.34
TP	4.16 3.10	30.35	4.46 2.80 26.19
BM			5.93 1.33 24.42 24.42

RETURN LEVELS

TP	5.70 1.30	30.32	4.13 3.13 26.19
	4.79 2.47	30.98	

RETURN LEVELS CONT'D Pg. 72

Comments

Hudson
T. MORRISON
GARDNER

24.667 NGVD29
23.357 NAVD88

FB DOT BRASS CAP in center of the cone head of
of a cone. C.W. Located @ the N.E. cor of
the intersection of C.E. Blvd & Old Dan Graded.
MARK STAMPED "S.F.D.M.D. 103 1998" in
Sic. 21 Tap 475 R66 286

[Handwritten signature]

Retired Levels Cont'd Feb. 71

STA	+	HE	-	Elev.	B.M.
		30.98			
19			4.67 2.59	26.31	
	4.25 3.01	30.56			
19			5.35 1.91	25.21	
	4.32 2.94	29.53			
19			4.56 2.70	24.97	
	4.28 2.98	29.25			
19			3.87 3.39	25.38	
	4.57 2.69	29.95			
19			4.83 2.43	25.12	
	4.71 2.55	29.83			
19			4.87 2.39	24.96	
	4.49 2.77	29.45			
19			4.63 2.63	24.82	
	4.74 2.52	29.56			
19			4.99 2.27	24.57	
	4.93 2.23	29.55			

Retired Levels Cont'd Feb. 71

Comments

W Hudson
T Morrissey
G Gephart

[Handwritten signature]

RETURN LEVELS CONT'D P. 72

STA	-	ht	-	incl.	Bm
		29.56			
TP			4.65 2.61	24.90	
	4.40 2.80	29.30			
TP			4.43 2.83	24.87	
	4.46 2.80	29.33			
TBM			4.34 2.92	24.99	24.99 ✓

END RETURN LEVELS

LEVELS CONT'D FROM BM 003 TO BM 004

Bm					24.42
	4.56 2.70	28.98			
TP			4.86 2.40	24.12	
	4.74 2.32	29.06			
TP			5.05 2.21	24.01	
	5.14 2.12	29.15			

LEVELS CONT'D P. 74

Comments

M HUDSON
T MORRISON
P GRAYSON

Bm 002 P. 090 (ERROR 0.00)

S 21 T 47 R 28

Bm 003 P. 71

Handwritten initials

Levels cont'd pg. 73

STA	#	HI	-	red	BLU
		29.15			
IP			1.79		24.36
	4.95	29.31	2.47		
	2.31				
IPM			2.92		26.37
	2.88		4.34		26.637 NGVD29
	4.38	29.27			25.327 NAVD88
IPM			3.84		
	4.01		3.42		25.43
	3.25	29.44			
IP			5.07		24.37
	6.71		2.19		25.667 NGVD29
	1.55	30.08			24.367 NAVD88
IP			5.01		25.07
	3.15		2.25		
	4.11	28.22			
IP			4.96		23.26
	5.12		2.30		
	2.14	28.38			
IP			5.20		23.18
	4.94		2.06		
	2.32	28.12			
IP			1.78		23.34
	2.32		2.48		
	4.90				
	2.30	28.30			

Levels cont'd pg. 75

Comments

W. HODSON
T. GRAHAM
D. MOOREHEAD

A 1" NODD CUT IN NORTH TOP OF 2" PINE DOWEL
IN A 6" RC CASTING OF DOWEL # HFB

RR SPIKE SET IN DR SIDE OF A 12" PINE TREE
± 10' N.W. OF DOWEL HFB 1000' NORTH OF CR.
BLU ON EAST SIDE OF DOWEL GRADE IN
SEC. 21 T. 5P 47S R. 6E 28E

Using the differences between the original level run and the 2003 Consul-Tech elevations at CC8 of:
 0.247 NGVD29 - (Add to the field values)
 -1.31 to NAVD88 from the new NGVD29 value

Using the above differences at CC8
 And applying a simple difference in elevation (DE)

Benchmark	Original El. NGVD29	revised NGVD29	NAVD88
CC	21.76	22.007	20.697
CC1	23.42	23.667	22.357
CC2	24.985	25.232	23.922
CC3	24.42	24.667	23.357
CC4	23.56	23.807	22.497
CC5	22.99	23.237	21.927
CC6	22.055	22.302	20.992
CC7	22.925	23.172	21.862
CC8	22.045	22.292	20.982
RR Spike	25.43	25.667	24.367

[Handwritten signature]

LEVELS CONT'D P. 74

STA	+	HT	-	Elev	Bm
		28.30			
TP			5.25	23.05	
			2.01		
	5.22	28.27			
	2.04				
TP			4.96	23.31	
			2.30		
	5.13	28.44			
	2.13				
TP			4.80	23.64	
			2.46		
	4.104	28.28			
	2.62				
TP			4.44	23.84	
			2.82		
	4.50	28.34			
	2.76				
Bm			4.78	23.56	23.56
			2.48		

RETURN LEVELS

	4.09	28.25			
	2.57				
TP			4.41	23.84	
			2.85		
	4.30	28.20			
	2.90				
TP			4.61	23.59	
			2.05		
	4.85	28.47			
	2.38				

RETURN LEVELS CONT'D P. 76

COMMENTS

At Aveson
T. Greenway
& Wallace!

23.807 NGVD29
22.497 NAVD88

Bm '004' A Alum cap's F.D.M.D. in a 1 1/4" I.P.
Set in CONC. 0.3' BILDED GRND. MARK IS LOCATED
@ THE NORTH END OF DUNDEN GRADE 1.0 MILE
NORTH OF CR. 246, SET IN THE N.D. COR OF AN
INTERSECTION OF ROADS LEADING TO GREENFIELDS IN
SEC. 21 TWP. 47S R44.23E

[Handwritten signature]

RETURN LEVELS FB 75

STA	+	HE	-	Calc.	Sum
		28.47			
19			5.15	23.32	
	4.89	28.21	2.11		
	2.37				
19			5.21	23.00	
	5.28	28.28	2.05		
	1.98				
19			5.04	23.24	
	4.91	28.15	2.22		
	2.35				
19			5.00	23.15	
	5.15	28.30	2.26		
	2.11				
19			5.10	23.20	
	4.92	28.12	2.16		
	2.34				
19			3.09	25.03	
	5.01	30.04	4.17		
	2.25				
19			5.70	24.34	
	5.06	29.40	1.56		
	2.20				
19/16			3.97	25.43	
	3.74		3.29		
	3.52	29.17			

RETURN LEVELS Cont'd FB 77

Comments

Hudson
+ Graham
+ Morriss!

AM

RETURN LEVELS CONTD FR. 70

STA	+	HE	-	SEAL	Bm
		27.17			
1A			5.13 2.13	24.04	
	5.07 2.19	29.11			
1A			5.01 2.25	24.10	
	5.12 2.14	29.22			
1A			5.07 2.19	24.15	
	4.92 2.34	29.07			
Bm			4.65 2.61	24.42	24.42 ✓

END RETURN LEVELS

LEVELS CONTD FR. Bm 004 TO 005

Bm					23.50 ✓
	4.27 2.99	27.83			
1A			4.69 2.57	23.14	
	4.57 2.69	27.71			

LEVELS CONTD FR. 73

Comments

at Hudson
T & BOUAW
φ Morriset

Bm 003 7.71 (illol 0.00')

Bm 004 7.75

BOB

LEVELS CONT'D P. 77

STA	+	HT	-	INSTR	Bm
		27.71			
IP			4.60 2.66	23.11	
	4.83 2.43	27.94			
IP			4.71 2.55	23.23	
	4.67 2.59	27.90			
IP			4.49 2.77	23.41	
	4.87 2.39	28.28			
Bm			5.29 1.97	22.99	22.99

RETURN LEVELS

	5.20 2.00	28.25			
IP			4.84 2.42	23.41	
	4.50 2.76	27.91			
IP			4.60 2.60	23.25	
	4.77 2.49	28.02			
IP			4.86 2.40	23.16	
	4.52 2.74	27.68			

RETURN LEVELS CONT'D P. 79

COMMENTS

W HOBSON
H MORRISON
D GRIFFIN

23.237 NGVD29
21.927 NAVD88

Bm C&S SET, A S&W. AD. LWM CAP. IN A 1 1/4" IP SET IN CODE, MARK IS ± 2000' DIST OF Bm C&A (P. 75) ON NORTH SIDE OF A E.W. FARM RD. OFF DIMENSION GRADE, 1.0 MILE NORTH OF C&E 8410 ± 11.2' SOUTH OF A METAL DIS. POST. IN SEC. 21 TWP. 47S R6E 28E

RETURN LEVELS CONT'D IN FB 78

STA	+	HI	-	ELEV.	Bm
"		27.68	4.48	23.20	
	2.69		2.78		
	2.57	27.89			
Bm			4.33	23.56	23.56
			2.93		

END RETURN LEVELS

LEVELS TO ESTAB. VERT. CONTROL FOR DENS & H3 & H5

Bm				22.99	
	4.77	27.76			
	2.49				
Bm			1.87	25.89	25.89
			5.39		
	1.83	27.72			
	5.43				
Bm			2.44	25.28	25.28
			4.82		
	2.41	27.69			
	4.85				
Bm			4.70	22.99	22.99
			2.56		

END LEVELS FOR DENS H3 & H5

LEVELS CONT'D IN 308 FB # 83 Pg 1

COMMENTS

Hudson
MOLLISSET
GRAHAM

Bm U4 FB 75 (Error 0.00')

23.237 NGVD29
21.927 NAVD88

Bm U5 FB 78

26.137 NGVD29
24.827 NAVD88

A V. NOTCH CUT IN THE NORTH TOP OF A 2" PVC WELL IN A 8" PVC CASTING. WELL # H5, IN COW PASTURE

25.527 NGVD29
24.217 NAVD88

A V. NOTCH CUT IN THE NORTH TOP OF A 2" PVC WELL IN A 8" PVC CASTING. WELL # H3, IN LIGHT FOND

Bm U5 (Error 0.00')

23.237 NGVD29
21.927 NAVD88

[Handwritten signature]

16 47/28

Levels Contd Fr. Bob B 82 To 79

Levels Contd Fr Bm CC4 To Bm CC6

STA	+	Hz	-	Elev.
Bm				23.56
	1.05	27.61		
	3.21			
TP			4.52	23.09
			2.74	
	4.47	27.56		
	2.79			
TP			4.76	22.80
			2.50	
	4.52	27.32		
	2.74			
TP			4.55	22.77
			2.71	
	4.53	27.30		
	2.73			
TP			4.75	22.55
			2.51	
	4.60	27.15		
	2.60			
TP			4.63	22.52
			2.63	
	4.83	27.35		
	2.43			
TP			4.80	22.49
			2.40	
	4.70	27.27		
	2.48			

Levels Contd Fr. 2

Hudson
T. Graham
of Messrs!

Comments

Bm CC4 Bob B 82 To 75

Handwritten signature

LEVELS CONT'D R. 1

STA	+	Hz	-	and	Bm
		27.27			
IP			4.15 3.11		23.12
	4.68 2.58	27.80			
IP			5.00 2.26		22.80
	4.64 2.62	27.84			
IP			4.58 2.68		22.86
	4.60 2.66	27.46			
Bm			5.40 1.86		22.06

~~22.055~~
(405)

REVEN LEVELS

	5.30 1.96	27.36			
IP			4.50 2.76		22.80
	4.43 2.83	27.29			
IP			4.56 2.70		22.73
	5.12 2.14	27.85			

REVEN LEVELS CONT'D R. 3

Comments

H HUDSON
T GEORHAM
& MORRISSE!

22.302 NGVD29
20.992 NAVD88

Bm CLO SET, A S.F.W.M.D. ALUM CAP IN A 1 1/4" I. P. SET IN CONK. STAMPED "Bm CLO 1998"
TO REPEAT: FROM THE INTERSECTION OF CR. 246 & OILWELL GRADE, GO NORTH ON OILWELL GRADE 1/10 MILE TO SET OF A EAST/WEST RD. GO EAST ON E/W RD 0.5 MILE TO A 90° BEND IN RD, CONTINUE AROUND BEND, HEADING NORTH, FOR 0.2 MILE TO STA LOCATION. MARK IS IN WEST EDGE OF RD, IN LINE W/ THE PROJECTED C. OF A EAST BOUND FARM RD. 3.0' EAST OF A METAL D.P. POST 0.3 BELOW GROUND IN SEC 16 T4P 47S R2E 28E

[Handwritten signature]

RETURN LEVELS CONTD FR. P. 2

STA	+	HC	-	Elev.	Bm
		27.85			
IP			4.50 2.70	23.35	
	3.73 3.53	27.08			
IP			4.03 2.63	22.45	
	4.84 2.42	27.29			
IP			4.81 2.45	22.48	
	4.58 2.68	27.06			
IP			4.58 2.68	22.48	
	4.57 2.69	27.05			
IP			4.29 2.97	22.76	
	4.44 2.82	27.20			
IP			4.44 2.82	22.76	
	4.72 2.54	27.48			
IP			4.46 2.80	23.02	
	4.51 2.75	27.53			
Bm			3.76 3.80	23.57	23.56 ✓

END RETURN LEVELS
LEVELS CONTD FR. A

Comments

At Hudson
T. GRAHAM
of MORRIS!

Bm CCA P. 1 (Error 0.01')

(4)

Bob

83

10-23-78

LEVELS CONT'D To Bm CCL6, To Bm CCL7

STA	+ HI	-	ELEV.	Bm ✓
Bm	5.58 1.68	27.04		22.06
TP			4.73 2.53	22.91
TP	4.97 2.29	27.88	4.84 2.42	23.04
TP	4.77 2.49	27.81	4.69 2.57	23.12
TP	4.73 2.53	27.85	4.93 2.33	22.92
TP	5.01 2.25	27.93	4.79 2.47	23.14
TP	4.45 2.81	27.59	4.58 2.68	23.01
TP	4.78 2.48	27.79	4.45 2.81	23.34
TP	4.60 2.66	27.94		

LEVELS CONT'D To Bm CCL5

Bob

83

10-23-78

(4)

Comments

Bm CCL6 To 2

W Horizon
N GRAVITY
MORRISSE!

LEVELS CONT'D P. 4

STA	+	HI	-	ELVD	Bm
		27.94			
TP			4.74 2.52	23.20	
	4.96 2.30	28.16			
TP			4.56 2.70	23.60	
	4.165 2.161	23.25			
TP			5.34 1.92	22.91	
	4.47 2.79	27.38			
TP			4.96 2.30	22.42	
	5.46 1.30	27.88			
Bm			4.95 2.31	22.93	22.925 (ADS)

RETURN LEVELS

	4.85 2.41	27.78			
TP			5.36 1.90	22.42	
	4.90 2.36	27.32			
TP			4.40 2.86	22.92	
	5.33 1.93	28.25			

RETURN LEVELS CONT'D P. 6

COMMENTS

RT HUDSON
K GRAHAM
φ MOERISSEY

23.172 NGVD29
21.862 NAVD88

Bm CCT SET, A S.F.W.M.D ALUM CAP SET IN N.E. COR OF EQUIPMENT BARN ON NORTH END OF FARM FIELD. STAMPED "Bm CCT 1998"

TO REACH: FR. C.R. 840 & OILWELL GRADE, GO NORTH ON OILWELL GRADE 1.0 MILE TO A EAST/WEST FARM RD. GO EAST ON FARM RD. 0.5 MILE TO A 90° BEND IN RD., CONTINUE AROUND BEND, HEADING NORTH FOR ≈ 1.0 MILE TO A WEST BOUND BEND IN RD, EQUIPMENT YARD & STA. LOCATION. MARK IS SET IN CONC. PAD @ N.E. COR. OF BARN. IN SEC. 9 TWP 47S R2E Z3E

Beb

RETURN LEVELS CONT'D Pg. 5

SP	+	HT	-	ELEV.	Bm
1A		28.25	4.67 2.59	23.58	
	4.47 2.79	28.05			
1A			4.85 2.41	23.20	
	4.77 2.49	27.97			
1A			4.04 2.62	23.33	
	4.49 2.77	27.82			
1A			4.89 2.37	22.93	
	4.63 2.63	27.50			
1A			4.42 2.84	23.14	
	4.75 2.51	27.89			
1A			5.03 2.23	22.80	
	4.85 2.41	27.71			
1A			4.60 2.66	23.11	
	4.74 2.52	27.85			
1A			4.98 2.28	22.87	
	5.20 2.00	28.07			

RETURN LEVELS CONT'D Pg. 7

COMMENTS

W HUDSON
T GRAHAM
O MORRISSE!

Revised Levels Cont'd Fr. P. 6

STA	+	HI	-	ELEV.	Bm
		28.07			
TP			5.18	22.89	
			2.08		
	4.77	27.00			
	2.49				
Bm			5.59	22.07	22.06 ✓
			1.07		

END Revised Levels

Levels Cont'd Fr. Bm CC7 to Bm CC8

Bm				22.93 ✓ (405)
	5.09	28.02		
	2.17			
TP			4.70	23.32
			2.56	
	4.01	27.93		
	2.65			
TP			4.85	23.08
			2.41	
	4.44	27.52		
	2.82			
TP			4.94	22.58
			2.32	
	4.89	27.47		
	2.37			
TP			4.87	22.60
			2.39	
	4.70	27.30		
	2.56			

Levels Cont'd P. 8

Comments

Bm CC6 P. 2 (Elev 0.01)

Bm CC7 P. 5

JEM

LEVELS CONTD FB 7

STA	+	HE	-	ELEV.	Bm
		27.30			
12			4.51 2.75	22.79	
	4.88 2.38	27.67			
12			4.15 3.11	23.52	
	4.49 2.77	28.01			
12			5.57 1.69	22.44	
	4.90 2.36	27.34			
12			4.69 2.57	22.65	
	4.68 2.58	27.33			
Bm			5.28 1.98	22.05	22.045 (ADS)

RETURN LEVELS

	5.48 1.78	27.53			
12			4.93 2.33	22.60	
	4.70 2.36	27.30			
12			4.91 2.35	22.39	
	5.67 1.39	28.06			

RETURN LEVELS CONTD FB 9

Comments

M HOSON
T MORRISSE
& GRAYSON

22.292 NGVD29*
20.982 NAVD88*
* This mark is included in
Consul-Tech's level run
from the 2003 Report
(27-feb-03)

Bm CUB SET, A S.F.D.M.D ALUM CAP IN A 1/4" I.P SET IN CONC. 0.3 BEYOND GEND STAMPED "Bm CUB 1993" TO REACH MARK, FB. THE INTERSECTION OF CR. 846 & OIL WELL GEPDE, GO NORTH ON OIL WELL GEPDE FOR 1.0 MILE TO A EAST/WEST FARM RD. GO EAST ON FARM RD 0.5 MILE TO A 90° BEND IN RD. CONTINUE AROUND BEND, LEADING NORTH, FOR 1.0 MILE TO A FORK IN RD. @ EQUIPMENT BARN, GO LEFT TO FORK, LEADING WEST ON FARM RD FOR 0.53 MILE TO A WOODS RD LEADING NORTH @ STA LOCATION. MARK IS IN NORTH EDGE OF EAST/WEST RD, @ IN LINE W E OF WOODS RD. LEADING NORTH. IN SEC 9 TWP 47S RGE 28E

[Handwritten signature]

RETURN LEVELS CONT'D Pg. 8

STA	+	HE	-	ELV.	Bm
		28.00			
19			4.31	23.75	
	3.98	27.73	2.95		
	3.28				
19			4.71	23.02	
	4.28	27.30	2.55		
	2.93				
19			4.55	22.75	
	4.70	27.45	2.71		
	2.50				
19			4.72	22.73	
	4.76	27.49	2.54		
	2.50				
19			4.22	23.27	
	4.77	28.04	3.04		
	2.49				
19			4.48	23.50	
	4.55	28.11	2.78		
	2.71				
Bm			5.17	22.94	22.93
			2.09		

END RETURN LEVELS

LEVELS CONT'D Pg. 10

Comments

M. Hodson
 T. Morrissey
 G. Graham

Bm CCT 7.5 (Error 0.01')

DM

Levels to establish vertical control for H#2, H#4, H#7, H#6 & H#1 monitoring wells on North end of Head Farms

STA	+	HE	-	RED.	Bm
Bm	4.95 2.31	27.00			22.05 (205)
IP	4.96 2.30	26.79	5.17 2.67	21.83	
Bm	2.90 4.36	26.74	2.95 4.31	23.84	24.087 NGVD29 22.777 NAVD88
IP	4.27 2.99	26.10	4.91 2.35	21.83	
IP	4.73 2.53	25.77	5.06 2.20	21.02	
Bm	1.32 5.94	24.73	2.30 4.90	23.41	23.657 NGVD29 22.347 NAVD88
IP	4.12 3.14	24.90	3.95 3.31	20.78	
Bm	0.21 7.05	24.85	0.26 7.00	24.04	24.887 NGVD29 23.577 NAVD88

Levels cont'd pg. 11

Comments
Bm CBS 7. 6

W. Wilson
1. measured
of station

22.292 NGVD29*
20.982 NAVD88*

* This mark is included in Consul-Tech's level run from the 2003 Report (27-feb-03)

A 1" CUT IN SOUTH TOP OF A 2" PVC WELL IN A 8" PVC CASTING OF WELL # H#2

0.247 NGVD29 - (Add to the field values)
-1.31 to NAVD88 from the new NGVD29 value

A 1" CUT IN EAST TOP OF A 2" PVC WELL IN A 8" PVC CASTING OF WELL # H#4

A 1" CUT IN NORTH TOP OF A 2" PVC WELL IN A 8" PVC CASTING OF WELL # H#7

W

LEVELS CONTD FB. Pg. 10

STA	+	HE	-	Elev.	Bm
		24.85			
IP			3.71	21.14	
	5.24	26.33	3.55		
	2.02				
IP			4.47	21.91	
	5.09	27.00	2.79		
	2.17				
Bm			2.95	24.05	
	3.06	27.11	4.31		
	4.20				

24.297 NGVD29*
22.987 NAVD88*

0.247 NGVD29 - (Add to the field values)
-1.31 to NAVD88 from the new NGVD29 value

A.V. CUT IN SOUTH TOP OF A 2" PVC DOWEL IN A 3" RE CASTING OF DOWEL & HFLG

Bm			5.19	21.92	
			2.07		
	5.16	27.08			
	2.10				

22.167 NGVD29*
20.857 NAVD88*

A.V. CUT IN SOUTH TOP OF A 2" PVC DOWEL IN A 3" RE CASTING OF DOWEL & HFLG

Bm			5.03	22.05	22.05
			2.23		

Bm CC8 FOR B (Error 0.00')

22.292 NGVD29*
20.982 NAVD88*
* This mark is included in Consul-Tech's level run from the 2003 Report (27-feb-03)

END LEVELS FOR HUMAN PREMISES DOWLS

LEVELS CONTD FB. Pg. 12

Comments

Using the differences between the original level run and the 2003 Consul-Tech elevations at CC8 of:
0.247 NGVD29 - (Add to the field values)
-1.31 to NAVD88 from the new NGVD29 value

Using the above differences at CC8
And applying a simple difference in elevation (DE)

Benchmark	Original El. NGVD29	revised NGVD29	NAVD88
CC	21.76	22.007	20.697
CC1	23.42	23.667	22.357
CC2	24.985	25.232	23.922
CC3	24.42	24.667	23.357
CC4	23.56	23.807	22.497
CC5	22.99	23.237	21.927
CC6	22.055	22.302	20.992
CC7	22.925	23.172	21.862
CC8	22.045	22.292	20.982
RR Spike	25.43	25.667	24.367

Handwritten initials/signature



Survey Data Entry and Retrieval Application (SDERA) Print Output

Control Point Search Results

Derived Data - Denoted By:
**

Designation	CC8	Record State	ACCEPTED
NGS PID			
Project Name	HF1, HF2, HF4, HF6 & HF7 WELL SITES	Date Entered/Updated	08/20/2016
Updated By	hehmke	Status	MARK NOT FOUND
Party Chief		Type	V
Monument Set By	SOUTH FLORIDA WATER MANAGEMENT DISTRICT	Date Established	01/01/1998
County	COLLIER COUNTY	Section	9
Township	47	Range	28
Quadrangle	CORKSCREW	Offset (29 to 88)	
NGS Source BM		CCR Link	
Ctrl Pt Source(s)			

<u>Horizontal</u>	<u>NAD 1927</u>	<u>NAD 1983</u>	<u>Vertical</u>	<u>NGVD 1929</u>	<u>NAVD 1988</u>
Latitude		26 23 43.8	Class		
Longitude		81 31 34.8	Order	3	3
Northing(Y)			Elevation	22.292	20.982
Easting(X)			Measurement Unit	Feet	Feet
Class					
Order					
NAD83 Adj Year					

Field Book
BCB #83

Field Book Pages
8

Stamping
BM CC8 1998

How to Reach
Old SFWMD El. 22.045 NGVD29
***** Recovery Note *****
2/28/2008 Surveyor Wallen, Bowyer- Singleton & Assoc. Mark not found
2003 Consul-Tech shows this benchmark in the level run. Level Line field notes not available.

From the junction of County Road 846 and State Road 29 in Immokalee, go South, Southwest 8.0miles more or less, to Oil Well Grade; turn Northerly on Oil Well Grade and go 0.84 of a mile to an East/West farm fields road; turn right and go 0.5 of a mile to a 90^ bend in road; Proceed Northerly for 1.0 mile to equipment barn on left; turn left and go 0.53 of a mile to a Jeep trail and station location.
Station is a SFWMD aluminum disc stamped BM CC8 1998, set in a 1-1/4-inch iron pipe with a concrete collar and recessed 0.4 feet below ground. Mark is located on the North edge of the dirt road and the centerline of the jeep road leading North.

Level Adjustment: 03-19-2003 10:12:36

From file: 30201--2.LIN

Project: Project: SFWMD LEE-COLLIER WELLS

Entered by: M. HOLT 03-12-2003 11:28:02

BM ADJ EL(M)	SUM DIST	UNADJ ELEV	CORRECTION	ADJ EL(FT)
Y 534 7.007	0.000	22.989		22.989
TP 1 7.404	441.000	24.292	0.001	24.293
TP 2 7.573	862.000	24.845	0.001	24.846
TP 3 7.522	1306.000	24.675	0.002	24.677
TP 4 7.786	1745.000	25.542	0.003	25.545
TP 5 7.810	2188.000	25.619	0.003	25.622
TP 6 7.931	2619.000	26.016	0.004	26.020
TP 7 7.855	3035.000	25.766	0.005	25.771
TP 8 7.947	3471.000	26.066	0.005	26.071
TP 9 7.999	3908.000	26.239	0.006	26.245
TP 10 7.994	4343.000	26.222	0.006	26.228
TP 11 7.961	4775.000	26.112	0.007	26.119
TP 12 7.570	5176.000	24.829	0.008	24.837
TP 13 7.408	5539.000	24.296	0.008	24.304

TP 14 7.432	5968.000	24.373	0.009	24.382
. 7.401	6398.000	24.273	0.009	24.282
TP 16 7.451	6839.000	24.436	0.010	24.446
TP 17 7.564	7271.000	24.806	0.011	24.817
TP 18 7.496	7710.000	24.583	0.011	24.594
TP 19 7.131	8144.000	23.383	0.012	23.395
TP 20 7.110	8574.000	23.313	0.013	23.326
TP 21 7.148	9016.000	23.439	0.013	23.452
TP 22 7.367	9430.000	24.155	0.014	24.169
TP 23 7.292	9847.000	23.908	0.015	23.923
TP 24 7.368	10263.000	24.158	0.015	24.173
TP 25 7.191	10697.000	23.578	0.016	23.594
TP 26 7.155	10999.000	23.458	0.016	23.474
TP 27 7.150	11433.000	23.442	0.017	23.459
TP 28 7.204	11870.000	23.619	0.018	23.637
TP 29 7.160	12309.000	23.472	0.018	23.490
TP 30 7.221	12745.000	23.672	0.019	23.691
TP 31 7.599	12879.000	24.912	0.019	24.931

COLL-49 6.858	13077.000	22.482	0.019	22.501
TP 32 7.253	13476.000	23.775	0.020	23.795
TP 33 7.179	13921.000	23.532	0.021	23.553
TP 34 7.069	14365.000	23.172	0.021	23.193
TP 35 7.166	14795.000	23.488	0.022	23.510
TP 36 7.261	15240.000	23.801	0.023	23.824
TP 37 7.060	15686.000	23.141	0.023	23.164
TP 38 7.033	16136.000	23.051	0.024	23.075
TP 39 7.003	16568.000	22.951	0.025	22.976
TP 40 7.008	17007.000	22.968	0.025	22.993
TP 41 6.927	17446.000	22.701	0.026	22.727
TP 42 6.915	17876.000	22.661	0.027	22.688
TP 43 7.211	17978.000	23.631	0.027	23.658
TP 44 6.998	18406.000	22.931	0.027	22.958
TP 45 7.043	18835.000	23.078	0.028	23.106
TP 46 7.049	19273.000	23.098	0.029	23.127
TP 47 7.119	19699.000	23.328	0.029	23.357
TP 48 7.022	20143.000	23.008	0.030	23.038

TP 49 6.950	20568.000	22.771	0.030	22.801
TP 50 7.103	20988.000	23.271	0.031	23.302
TP 51 7.157	21429.000	23.448	0.032	23.480
TP 52 7.181	21857.000	23.528	0.032	23.560
TP 53 7.212	22283.000	23.628	0.033	23.661
TP 54 7.092	22722.000	23.235	0.034	23.269
TP 55 6.962	23149.000	22.808	0.034	22.842
GPS A060 6.734	23425.000	22.058	0.035	22.093
TP 56 7.027	23811.000	23.018	0.035	23.053
TP 57 7.139	24230.000	23.385	0.036	23.421
TP 58 6.989	24653.000	22.892	0.037	22.929
TP 59 6.973	25090.000	22.839	0.037	22.876
TP 60 7.004	25541.000	22.942	0.038	22.980
TP 61 7.165	25956.000	23.469	0.038	23.507
TP 62 6.788	26409.000	22.232	0.039	22.271
TP 63 6.928	26852.000	22.689	0.040	22.729

CC-8 6.795	27179.000	22.252	0.040	22.292
---------------	-----------	--------	-------	--------

COLL-46 6.739	27338.000	22.069	0.041	22.110
------------------	-----------	--------	-------	--------

TP 64 6.550	27784.000	21.449	0.041	21.490
COLL-45 6.646	27869.000	21.762	0.041	21.803
TP 65 6.563	28039.000	21.492	0.042	21.534
TP 66 6.740	28401.000	22.072	0.042	22.114
TP 67 7.009	28831.000	22.952	0.043	22.995
TP 68 6.928	29290.000	22.685	0.043	22.728
TP 69 7.198	29741.000	23.572	0.044	23.616
TP 70 6.988	30183.000	22.882	0.045	22.927
TP 71 6.967	30633.000	22.812	0.045	22.857
TP 72 7.023	31079.000	22.996	0.046	23.042
TP 73 7.129	31525.000	23.342	0.047	23.389
TP 74 7.083	31977.000	23.192	0.047	23.239
TP 75 7.260	32419.000	23.772	0.048	23.820
TP 76 7.049	32860.000	23.079	0.049	23.128
TP 77 7.202	33294.000	23.579	0.049	23.628
TP 78 7.201	33732.000	23.575	0.050	23.625
TP 79 7.167	34195.000	23.462	0.051	23.513
TP 80 7.108	34648.000	23.269	0.051	23.320

TP 81 7.016	35093.000	22.966	0.052	23.018
TP 82 7.063	35541.000	23.120	0.053	23.173
TP 83 7.099	36004.000	23.237	0.053	23.290
TP 84 7.067	36445.000	23.130	0.054	23.184
CC-6 6.798	36539.000	22.250	0.054	22.304
TP 85 7.082	36979.000	23.180	0.055	23.235
TP 86 7.133	37430.000	23.347	0.056	23.403
TP 87 7.212	37670.000	23.607	0.056	23.663
TP 88 6.933	38097.000	22.690	0.056	22.746
TP 89 6.868	38539.000	22.476	0.057	22.533
TP 90 6.969	38967.000	22.806	0.058	22.864
TP 91 7.074	39416.000	23.149	0.058	23.207
TP 92 7.144	39880.000	23.379	0.059	23.438
TP 93 7.477	40333.000	24.472	0.060	24.532
TP 94 7.213	40788.000	23.605	0.060	23.665
TP 95 7.247	41246.000	23.715	0.061	23.776
TP 96 7.144	41708.000	23.375	0.062	23.437
TP 97 7.092	42160.000	23.205	0.063	23.268

TP 98 7.160	42642.000	23.429	0.063	23.492
TP 99 7.182	43082.000	23.499	0.064	23.563
TP 100 7.594	43524.000	24.849	0.065	24.914
TP 101 7.523	43943.000	24.616	0.065	24.681
TP 102 7.570	44408.000	24.769	0.066	24.835
TP 103 7.511	44857.000	24.576	0.067	24.643
TP 104 7.518	45292.000	24.599	0.067	24.666
TP 105 7.496	45743.000	24.526	0.068	24.594
X 534 7.681	45858.000	25.133	0.068	25.201

Closure : 0.068
 Max Allowed: 0.147 (MTS)
 Max Allowed: 0.074 (Second Order, Class II)

Distance : 45858
 Turns : 112
 Error per Turn : 0.00061

Project:
 Entered by: 03-13-2003 10:10:03

BM ADJ EL(M)	SUM DIST	UNADJ ELEV	CORRECTION	ADJ EL(FT)	--
-----	-----	-----	-----	-----	---
TP 31 7.599	0.000	24.931		24.931	
HF 5 7.960	421.000	26.114	0.001	26.115	
TP 7.098	819.000	23.284	0.002	23.286	
HF 3 8.469	1003.000	27.784	0.002	27.786	

HF 3G 1189.000 25.494 0.002 25.496
7.771

COLL-49 1439.000 22.498 0.003 22.501
6.858

Closure : 0.003
Max Allowed: 0.026 (MTS)
Max Allowed: 0.013 (Second Order, Class II)

Distance : 1439
Turns : 5
Error per Turn : 0.00060

BM ADJ EL(M)	SUM DIST	UNADJ ELEV	CORRECTION	ADJ EL(FT)	--
----- ----- COLL-46 6.739	0.000	22.110		22.110	
HF 6G 7.403	176.000	24.290	-0.000	24.290	
HF 1G 6.752	255.000	22.153	-0.001	22.152	
HF 1 7.686	332.000	25.216	-0.001	25.215	
TP 1 6.808	545.000	22.339	-0.002	22.337	
TP 2 6.873	654.000	22.552	-0.002	22.550	
HF 2G 7.340	758.000	24.082	-0.002	24.080	
HF 2 8.150	864.000	26.742	-0.002	26.740	
TP 3 6.849	970.000	22.472	-0.003	22.469	
TP 4 6.592	1150.000	21.632	-0.003	21.629	
HF 4G 7.211	1406.000	23.662	-0.004	23.658	
HF 4 7.999	1655.000	26.249	-0.005	26.244	

HF 7	1966.000	24.886	-0.005	24.881
7.584				

COLL-45	2147.000	21.809	-0.006	21.803
6.646				

Closure : -0.006
Max Allowed: 0.032 (MTS)
Max Allowed: 0.016 (Second Order, Class II)

Distance : 2147
Turns : 13
Error per Turn : -0.00046

HF001 well data fb BCB83 p11 a V cut in the north top of a 2-inch PVC well in an 8-inch PVC casting of well HF002 El. 21.92 NGVD 1929.

HF002 well data fb BCB83 p10 a V cut in the south top of a 2-inch PVC well in an 8-inch PVC casting of well HF002 El. 23.84 NGVD 1929.

HF004 well data fb BCB83 p10 a V cut in the east top of a 2-inch PVC well in an 8-inch PVC casting of well HF004 El. 23.41 NGVD 1929.

HF006 well data fb BCB83 p11 a V cut in the south top of a 2-inch PVC well in an 8-inch PVC casting of well HF006 El. 24.05 NGVD 1929.

HF007 well data fb BCB83 p10 a v cut in the north top of a 2-inch PVC well in a 8-inch PVC casting of well HF004 El. 2.4.64 NGVD 1929.

Description

A 1-1/4-inch iron pipe with a concrete collar and recessed 0.4 feet below ground.

DISCLAIMER:

The South Florida Water Management District (hereinafter referred to as the DISTRICT) shall not be held liable for improper or incorrect use of the data, information, apparatus, products, processes or materials described and/or contained herein. These data, information, apparatus, products, processes, materials and related graphics are not legal documents and are not intended to be used as such. The user hereby recognizes that the information, data, apparatus, products, processes and materials are dynamic and may change over time without notice. However, the DISTRICT makes no commitment to update the information, data, apparatus, products, processes or materials contained herein.



South Florida Water Management District Benchmark Database

Report run on: March 8, 2008 1:35 PM

Designation: CC8
County: COLLIER
USGS Quad: CORKSCREW
Project: HF1, HF2, HF4, HF6 & HF7 WELL SITES
Sec: 9 Twp: 47 Rge: 28
Status: MARK NOT FOUND

Latitude: 262343.800
Longitude: 813134.800
Monument By: SFWMD
Year: 1998
Type: V
Stamping: BM CC8 1998
Party Chief: HUDSON
Field Book BCB #83
Page: 8

Scaled values only

NAD 1927 Coordinates:

N =
E =

Adjustment:

NAD 1983 Coordinates:

X =
Y =

Adjustment:

Order:
Class:

NGVD 1929

Elevation: ~~22.045~~ **22.292 ***

Order: 3
Class:

NAVD 1988

Elevation: **20.982 ***

Order:
Class:

*** This mark is included in
Consul-Tech's level run
from the 2003 Report
(27-feb-03)**

Description:

*****RECOVERY NOTE*****

2/28/2008 SURVEYOR WALLEN, BOWYER- SINGLETON & ASSOC. MARK NOT FOUND

FROM THE JUNCTION OF COUNTY ROAD 846 AND STATE ROAD 29 IN IMMOKALEE, GO SOUTH, SOUTHWEST 8.0MILES +/-, TO OIL WELL GRADE, TURN NORTHERLY ON OIL WELL GRADE AND GO 0.84 MILE TO EAST/WEST FARM FIELDS ROADS ,TURN RIGHT AND GO 0.5 MILE TO A 90^ BEND IN ROAD , PROCEED NORTHERLY FOR 1.0 MILE TO EQUIPMENT BARN ON LEFT, TURN LEFT AND GO 0.53 MILE TO JEEP TRAIL AND STATION LOCATION. BM IS A SFWMD ALUMINUM DISC STAMPED BM CC8 1998, SET IN A 1 1/4" IRON PIPE WITH A CONCRETE COLLAR AND RECESSED 0.4 FT BELOW GROUND. MARK IS LOCATED ON THE NORTH EDGE OF THE DIRT ROAD AND THE CENTERLINE OF THE JEEP ROAD LEADING NORTH.

HF001 WELL DATA FB BCB83 P11 A "V" CUT IN THE NORTH TOP OF A 2-INCH PVC WELL IN A 8-INCH PVC CASTING OF WELL HF002 EL. 21.92 NGVD 1929

HF002 WELL DATA FB BCB83 P10 A "V" CUT IN THE SOUTH TOP OF A 2-INCH PVC WELL IN A 8-INCH PVC CASTING OF WELL HF002 EL. 23.84 NGVD 1929

HF004 WELL DATA FB BCB83 P10 A "V" CUT IN THE EAST TOP OF A 2-INCH PVC WELL IN A 8-INCH PVC CASTING OF WELL HF004 EL. 23.41 NGVD 1929

HF006 WELL DATA FB BCB83 P11 A "V" CUT IN THE SOUTH TOP OF A 2-INCH PVC WELL IN A 8-INCH PVC CASTING OF WELL HF006 EL. 24.05 NGVD 1929

HF007 WELL DATA FB BCB83 P10 A "V" CUT IN THE NORTH TOP OF A 2-INCH PVC WELL IN A 8-INCH PVC CASTING OF WELL HF004 EL. 24.64 NGVD 1929

Level Adjustment: 03-13-2003 10:37:11

From file: 30201-10-88.LIN

Project: Project: SFWMD LEE-COLLIER WELLS

Entered by: M. HOLT 03-12-2003 11:28:02

BM	SUM DIST	UNADJ ELEV	CORRECTION	ADJ EL(FT)
ADJ EL(M)				

Y 534	0.000	21.680		21.680
6.608				

TP 1	441.000	22.983	0.001	22.984
7.005				

TP 2	862.000	23.536	0.001	23.537
7.174				

TP 3	1306.000	23.366	0.002	23.368
7.123				

TP 4	1745.000	24.233	0.003	24.236
7.387				

TP 5	2188.000	24.310	0.003	24.313
7.411				

TP 6	2619.000	24.707	0.004	24.711
7.532				

TP 7	3035.000	24.457	0.004	24.461
7.456				

TP 8	3471.000	24.757	0.005	24.762
7.547				

TP 9	3908.000	24.930	0.006	24.936
7.600				

TP 10	4343.000	24.913	0.006	24.919
7.595				

TP 11	4775.000	24.803	0.007	24.810
7.562				

TP 12	5176.000	23.520	0.007	23.527
7.171				

TP 13	5539.000	22.987	0.008	22.995
7.009				

TP 14 7.033	5968.000	23.064	0.009	23.073
. 7.002	6398.000	22.964	0.009	22.973
TP 16 7.052	6839.000	23.127	0.010	23.137
TP 17 7.165	7271.000	23.497	0.010	23.507
TP 18 7.097	7710.000	23.274	0.011	23.285
TP 19 6.732	8144.000	22.074	0.012	22.086
TP 20 6.711	8574.000	22.004	0.012	22.016
TP 21 6.749	9016.000	22.130	0.013	22.143
TP 22 6.968	9430.000	22.846	0.014	22.860
TP 23 6.893	9847.000	22.599	0.014	22.613
TP 24 6.969	10263.000	22.849	0.015	22.864
TP 25 6.792	10697.000	22.269	0.015	22.284
TP 26 6.756	10999.000	22.149	0.016	22.165
TP 27 6.751	11433.000	22.133	0.016	22.149
TP 28 6.805	11870.000	22.310	0.017	22.327
TP 29 6.761	12309.000	22.163	0.018	22.181
TP 30 6.822	12745.000	22.363	0.018	22.381
TP 31 7.200	12879.000	23.603	0.019	23.622

COLL-49 6.459	13077.000	21.173	0.019	21.192
TP 32 6.854	13476.000	22.466	0.019	22.485
TP 33 6.780	13921.000	22.223	0.020	22.243
TP 34 6.670	14365.000	21.863	0.021	21.884
TP 35 6.767	14795.000	22.179	0.021	22.200
TP 36 6.862	15240.000	22.492	0.022	22.514
TP 37 6.661	15686.000	21.832	0.023	21.855
TP 38 6.634	16136.000	21.742	0.023	21.765
TP 39 6.604	16568.000	21.642	0.024	21.666
TP 40 6.609	17007.000	21.659	0.024	21.683
TP 41 6.528	17446.000	21.392	0.025	21.417
TP 42 6.516	17876.000	21.352	0.026	21.378
TP 43 6.812	17978.000	22.322	0.026	22.348
TP 44 6.598	18406.000	21.622	0.026	21.648
TP 45 6.643	18835.000	21.769	0.027	21.796
TP 46 6.650	19273.000	21.789	0.028	21.817
TP 47 6.720	19699.000	22.019	0.028	22.047
TP 48 6.623	20143.000	21.699	0.029	21.728

TP 49 6.551	20568.000	21.462	0.030	21.492
TP 50 6.703	20988.000	21.962	0.030	21.992
TP 51 6.757	21429.000	22.139	0.031	22.170
TP 52 6.782	21857.000	22.219	0.031	22.250
TP 53 6.813	22283.000	22.319	0.032	22.351
TP 54 6.693	22722.000	21.926	0.033	21.959
TP 55 6.563	23149.000	21.499	0.033	21.532
GPS A060 6.335	23425.000	20.749	0.034	20.783
TP 56 6.627	23811.000	21.709	0.034	21.743
TP 57 6.739	24230.000	22.076	0.035	22.111
TP 58 6.589	24653.000	21.583	0.035	21.618
TP 59 6.573	25090.000	21.530	0.036	21.566
TP 60 6.605	25541.000	21.633	0.037	21.670
TP 61 6.766	25956.000	22.160	0.037	22.197
TP 62 6.389	26409.000	20.923	0.038	20.961
TP 63 6.528	26852.000	21.380	0.039	21.419
CC-8 6.395	27179.000	20.943	0.039	20.982
COLL-46 6.340	27338.000	20.760	0.039	20.799

TP 64 6.151	27784.000	20.140	0.040	20.180
COLL-45 6.246	27869.000	20.453	0.040	20.493
TP 65 6.164	28039.000	20.183	0.040	20.223
TP 66 6.341	28401.000	20.763	0.041	20.804
TP 67 6.609	28831.000	21.643	0.041	21.684
TP 68 6.528	29290.000	21.376	0.042	21.418
TP 69 6.799	29741.000	22.263	0.043	22.306
TP 70 6.589	30183.000	21.573	0.043	21.616
TP 71 6.568	30633.000	21.503	0.044	21.547
TP 72 6.624	31079.000	21.687	0.045	21.732
TP 73 6.730	31525.000	22.033	0.045	22.078
TP 74 6.684	31977.000	21.883	0.046	21.929
TP 75 6.861	32419.000	22.463	0.047	22.510
TP 76 6.650	32860.000	21.770	0.047	21.817
TP 77 6.803	33294.000	22.270	0.048	22.318
TP 78 6.801	33732.000	22.266	0.049	22.315
TP 79 6.767	34195.000	22.153	0.049	22.202
TP 80 6.709	34648.000	21.960	0.050	22.010

TP 81 6.616	35093.000	21.657	0.051	21.708
TP 82 6.664	35541.000	21.811	0.051	21.862
TP 83 6.699	36004.000	21.928	0.052	21.980
TP 84 6.667	36445.000	21.821	0.052	21.873
CC-6 6.399	36539.000	20.941	0.053	20.994
TP 85 6.683	36979.000	21.871	0.053	21.924
TP 86 6.734	37430.000	22.038	0.054	22.092
TP 87 6.813	37670.000	22.298	0.054	22.352
TP 88 6.534	38097.000	21.381	0.055	21.436
TP 89 6.469	38539.000	21.167	0.055	21.222
TP 90 6.569	38967.000	21.497	0.056	21.553
TP 91 6.674	39416.000	21.840	0.057	21.897
TP 92 6.744	39880.000	22.070	0.057	22.127
TP 93 7.078	40333.000	23.163	0.058	23.221
TP 94 6.814	40788.000	22.296	0.059	22.355
TP 95 6.847	41246.000	22.406	0.059	22.465
TP 96 6.744	41708.000	22.066	0.060	22.126
TP 97 6.692	42160.000	21.896	0.061	21.957

TP 98 6.761	42642.000	22.120	0.061	22.181
TP 99 6.782	43082.000	22.190	0.062	22.252
TP 100 7.194	43524.000	23.540	0.063	23.603
TP 101 7.123	43943.000	23.307	0.063	23.370
TP 102 7.170	44408.000	23.460	0.064	23.524
TP 103 7.111	44857.000	23.267	0.065	23.332
TP 104 7.119	45292.000	23.290	0.065	23.355
TP 105 7.097	45743.000	23.217	0.066	23.283

X 534 7.282	45858.000	23.824	0.066	23.890
----------------	-----------	--------	-------	--------

Closure : 0.066
 Max Allowed: 0.147 (MTS)
 Max Allowed: 0.074 (Second Order, Class II)

Distance : 45858
 Turns : 112
 Error per Turn : 0.00059

Project:
 Entered by: 03-13-2003 10:10:03

BM ADJ EL(M)	SUM DIST	UNADJ ELEV	CORRECTION	ADJ EL(FT)
-----	-----	-----	-----	-----
TP 31 7.200	0.000	23.622		23.622
HF 5 7.561	421.000	24.805	0.001	24.806
TP 6.699	819.000	21.975	0.002	21.977
HF 3 8.070	1003.000	26.475	0.002	26.477

HF 3G 1189.000 24.185 0.002 24.187
7.372

COLL-49 1439.000 21.189 0.003 21.192
6.459

Closure : 0.003
Max Allowed: 0.026 (MTS)
Max Allowed: 0.013 (Second Order, Class II)

Distance : 1439
Turns : 5
Error per Turn : 0.00060

BM ADJ EL(M)	SUM DIST	UNADJ ELEV	CORRECTION	ADJ EL(FT)	--
----- ----- COLL-46 6.340	0.000	20.799		20.799	
HF 6G 7.004	176.000	22.979	-0.000	22.979	
HF 1G 6.352	255.000	20.842	-0.001	20.841	
HF 1 7.286	332.000	23.905	-0.001	23.904	
TP 1 6.409	545.000	21.028	-0.001	21.027	
TP 2 6.474	654.000	21.241	-0.002	21.239	
HF 2G 6.940	758.000	22.771	-0.002	22.769	
HF 2 7.751	864.000	25.431	-0.002	25.429	
TP 3 6.449	970.000	21.161	-0.002	21.159	
TP 4 6.193	1150.000	20.321	-0.003	20.318	
HF 4G 6.812	1406.000	22.351	-0.003	22.348	
HF 4 7.600	1655.000	24.938	-0.004	24.934	

HF 7	1966.000	23.575	-0.005	23.570
7.184				

COLL-45	2147.000	20.498	-0.005	20.493
6.246				

Closure : -0.005
Max Allowed: 0.032 (MTS)
Max Allowed: 0.016 (Second Order, Class II)

Distance : 2147
Turns : 13
Error per Turn : -0.00038

Level Adjustment: 03-19-2003 10:12:36

From file: 30201--2.LIN

Project: Project: SFWMD LEE-COLLIER WELLS

Entered by: M. HOLT 03-12-2003 11:28:02

BM	SUM DIST	UNADJ ELEV	CORRECTION	ADJ EL(FT)
ADJ EL(M)				

Y 534	0.000	22.989		22.989
7.007				

TP 1	441.000	24.292	0.001	24.293
7.404				

TP 2	862.000	24.845	0.001	24.846
7.573				

TP 3	1306.000	24.675	0.002	24.677
7.522				

TP 4	1745.000	25.542	0.003	25.545
7.786				

TP 5	2188.000	25.619	0.003	25.622
7.810				

TP 6	2619.000	26.016	0.004	26.020
7.931				

TP 7	3035.000	25.766	0.005	25.771
7.855				

TP 8	3471.000	26.066	0.005	26.071
7.947				

TP 9	3908.000	26.239	0.006	26.245
7.999				

TP 10	4343.000	26.222	0.006	26.228
7.994				

TP 11	4775.000	26.112	0.007	26.119
7.961				

TP 12	5176.000	24.829	0.008	24.837
7.570				

TP 13	5539.000	24.296	0.008	24.304
7.408				

TP 14 7.432	5968.000	24.373	0.009	24.382
. 7.401	6398.000	24.273	0.009	24.282
TP 16 7.451	6839.000	24.436	0.010	24.446
TP 17 7.564	7271.000	24.806	0.011	24.817
TP 18 7.496	7710.000	24.583	0.011	24.594
TP 19 7.131	8144.000	23.383	0.012	23.395
TP 20 7.110	8574.000	23.313	0.013	23.326
TP 21 7.148	9016.000	23.439	0.013	23.452
TP 22 7.367	9430.000	24.155	0.014	24.169
TP 23 7.292	9847.000	23.908	0.015	23.923
TP 24 7.368	10263.000	24.158	0.015	24.173
TP 25 7.191	10697.000	23.578	0.016	23.594
TP 26 7.155	10999.000	23.458	0.016	23.474
TP 27 7.150	11433.000	23.442	0.017	23.459
TP 28 7.204	11870.000	23.619	0.018	23.637
TP 29 7.160	12309.000	23.472	0.018	23.490
TP 30 7.221	12745.000	23.672	0.019	23.691
TP 31 7.599	12879.000	24.912	0.019	24.931

COLL-49 6.858	13077.000	22.482	0.019	22.501
TP 32 7.253	13476.000	23.775	0.020	23.795
TP 33 7.179	13921.000	23.532	0.021	23.553
TP 34 7.069	14365.000	23.172	0.021	23.193
TP 35 7.166	14795.000	23.488	0.022	23.510
TP 36 7.261	15240.000	23.801	0.023	23.824
TP 37 7.060	15686.000	23.141	0.023	23.164
TP 38 7.033	16136.000	23.051	0.024	23.075
TP 39 7.003	16568.000	22.951	0.025	22.976
TP 40 7.008	17007.000	22.968	0.025	22.993
TP 41 6.927	17446.000	22.701	0.026	22.727
TP 42 6.915	17876.000	22.661	0.027	22.688
TP 43 7.211	17978.000	23.631	0.027	23.658
TP 44 6.998	18406.000	22.931	0.027	22.958
TP 45 7.043	18835.000	23.078	0.028	23.106
TP 46 7.049	19273.000	23.098	0.029	23.127
TP 47 7.119	19699.000	23.328	0.029	23.357
TP 48 7.022	20143.000	23.008	0.030	23.038

TP 49 6.950	20568.000	22.771	0.030	22.801
TP 50 7.103	20988.000	23.271	0.031	23.302
TP 51 7.157	21429.000	23.448	0.032	23.480
TP 52 7.181	21857.000	23.528	0.032	23.560
TP 53 7.212	22283.000	23.628	0.033	23.661
TP 54 7.092	22722.000	23.235	0.034	23.269
TP 55 6.962	23149.000	22.808	0.034	22.842
GPS A060 6.734	23425.000	22.058	0.035	22.093
TP 56 7.027	23811.000	23.018	0.035	23.053
TP 57 7.139	24230.000	23.385	0.036	23.421
TP 58 6.989	24653.000	22.892	0.037	22.929
TP 59 6.973	25090.000	22.839	0.037	22.876
TP 60 7.004	25541.000	22.942	0.038	22.980
TP 61 7.165	25956.000	23.469	0.038	23.507
TP 62 6.788	26409.000	22.232	0.039	22.271
TP 63 6.928	26852.000	22.689	0.040	22.729

CC-8 6.795	27179.000	22.252	0.040	22.292
---------------	-----------	--------	-------	--------

COLL-46 6.739	27338.000	22.069	0.041	22.110
------------------	-----------	--------	-------	--------

TP 64 6.550	27784.000	21.449	0.041	21.490
COLL-45 6.646	27869.000	21.762	0.041	21.803
TP 65 6.563	28039.000	21.492	0.042	21.534
TP 66 6.740	28401.000	22.072	0.042	22.114
TP 67 7.009	28831.000	22.952	0.043	22.995
TP 68 6.928	29290.000	22.685	0.043	22.728
TP 69 7.198	29741.000	23.572	0.044	23.616
TP 70 6.988	30183.000	22.882	0.045	22.927
TP 71 6.967	30633.000	22.812	0.045	22.857
TP 72 7.023	31079.000	22.996	0.046	23.042
TP 73 7.129	31525.000	23.342	0.047	23.389
TP 74 7.083	31977.000	23.192	0.047	23.239
TP 75 7.260	32419.000	23.772	0.048	23.820
TP 76 7.049	32860.000	23.079	0.049	23.128
TP 77 7.202	33294.000	23.579	0.049	23.628
TP 78 7.201	33732.000	23.575	0.050	23.625
TP 79 7.167	34195.000	23.462	0.051	23.513
TP 80 7.108	34648.000	23.269	0.051	23.320

TP 81 7.016	35093.000	22.966	0.052	23.018
TP 82 7.063	35541.000	23.120	0.053	23.173
TP 83 7.099	36004.000	23.237	0.053	23.290
TP 84 7.067	36445.000	23.130	0.054	23.184
CC-6 6.798	36539.000	22.250	0.054	22.304
TP 85 7.082	36979.000	23.180	0.055	23.235
TP 86 7.133	37430.000	23.347	0.056	23.403
TP 87 7.212	37670.000	23.607	0.056	23.663
TP 88 6.933	38097.000	22.690	0.056	22.746
TP 89 6.868	38539.000	22.476	0.057	22.533
TP 90 6.969	38967.000	22.806	0.058	22.864
TP 91 7.074	39416.000	23.149	0.058	23.207
TP 92 7.144	39880.000	23.379	0.059	23.438
TP 93 7.477	40333.000	24.472	0.060	24.532
TP 94 7.213	40788.000	23.605	0.060	23.665
TP 95 7.247	41246.000	23.715	0.061	23.776
TP 96 7.144	41708.000	23.375	0.062	23.437
TP 97 7.092	42160.000	23.205	0.063	23.268

TP 98 7.160	42642.000	23.429	0.063	23.492
TP 99 7.182	43082.000	23.499	0.064	23.563
TP 100 7.594	43524.000	24.849	0.065	24.914
TP 101 7.523	43943.000	24.616	0.065	24.681
TP 102 7.570	44408.000	24.769	0.066	24.835
TP 103 7.511	44857.000	24.576	0.067	24.643
TP 104 7.518	45292.000	24.599	0.067	24.666
TP 105 7.496	45743.000	24.526	0.068	24.594
X 534 7.681	45858.000	25.133	0.068	25.201

Closure : 0.068
 Max Allowed: 0.147 (MTS)
 Max Allowed: 0.074 (Second Order, Class II)

Distance : 45858
 Turns : 112
 Error per Turn : 0.00061

Project:
 Entered by: 03-13-2003 10:10:03

BM ADJ EL(M)	SUM DIST	UNADJ ELEV	CORRECTION	ADJ EL(FT)	--
-----	-----	-----	-----	-----	---
TP 31 7.599	0.000	24.931		24.931	
HF 5 7.960	421.000	26.114	0.001	26.115	
TP 7.098	819.000	23.284	0.002	23.286	
HF 3 8.469	1003.000	27.784	0.002	27.786	

HF 3G 1189.000 25.494 0.002 25.496
7.771

COLL-49 1439.000 22.498 0.003 22.501
6.858

Closure : 0.003
Max Allowed: 0.026 (MTS)
Max Allowed: 0.013 (Second Order, Class II)

Distance : 1439
Turns : 5
Error per Turn : 0.00060

BM ADJ EL(M)	SUM DIST	UNADJ ELEV	CORRECTION	ADJ EL(FT)	--
----- ----- COLL-46 6.739	0.000	22.110		22.110	
HF 6G 7.403	176.000	24.290	-0.000	24.290	
HF 1G 6.752	255.000	22.153	-0.001	22.152	
HF 1 7.686	332.000	25.216	-0.001	25.215	
TP 1 6.808	545.000	22.339	-0.002	22.337	
TP 2 6.873	654.000	22.552	-0.002	22.550	
HF 2G 7.340	758.000	24.082	-0.002	24.080	
HF 2 8.150	864.000	26.742	-0.002	26.740	
TP 3 6.849	970.000	22.472	-0.003	22.469	
TP 4 6.592	1150.000	21.632	-0.003	21.629	
HF 4G 7.211	1406.000	23.662	-0.004	23.658	
HF 4 7.999	1655.000	26.249	-0.005	26.244	

HF 7	1966.000	24.886	-0.005	24.881
7.584				

COLL-45	2147.000	21.809	-0.006	21.803
6.646				

Closure : -0.006
Max Allowed: 0.032 (MTS)
Max Allowed: 0.016 (Second Order, Class II)

Distance : 2147
Turns : 13
Error per Turn : -0.00046