



RMBAKER LLC

WELL: IMWI-NO2
LOG STAGE: PRE-ABANDONMENT

Geology and Geophysics

8600 Oldbridge Lane
Orlando, FL 32819
mobile ph 407-733-8958
fax 407-370-4129

LOGS PROVIDED:
CALIPER
NATURAL GAMMA
CALCULATED VOLUMES

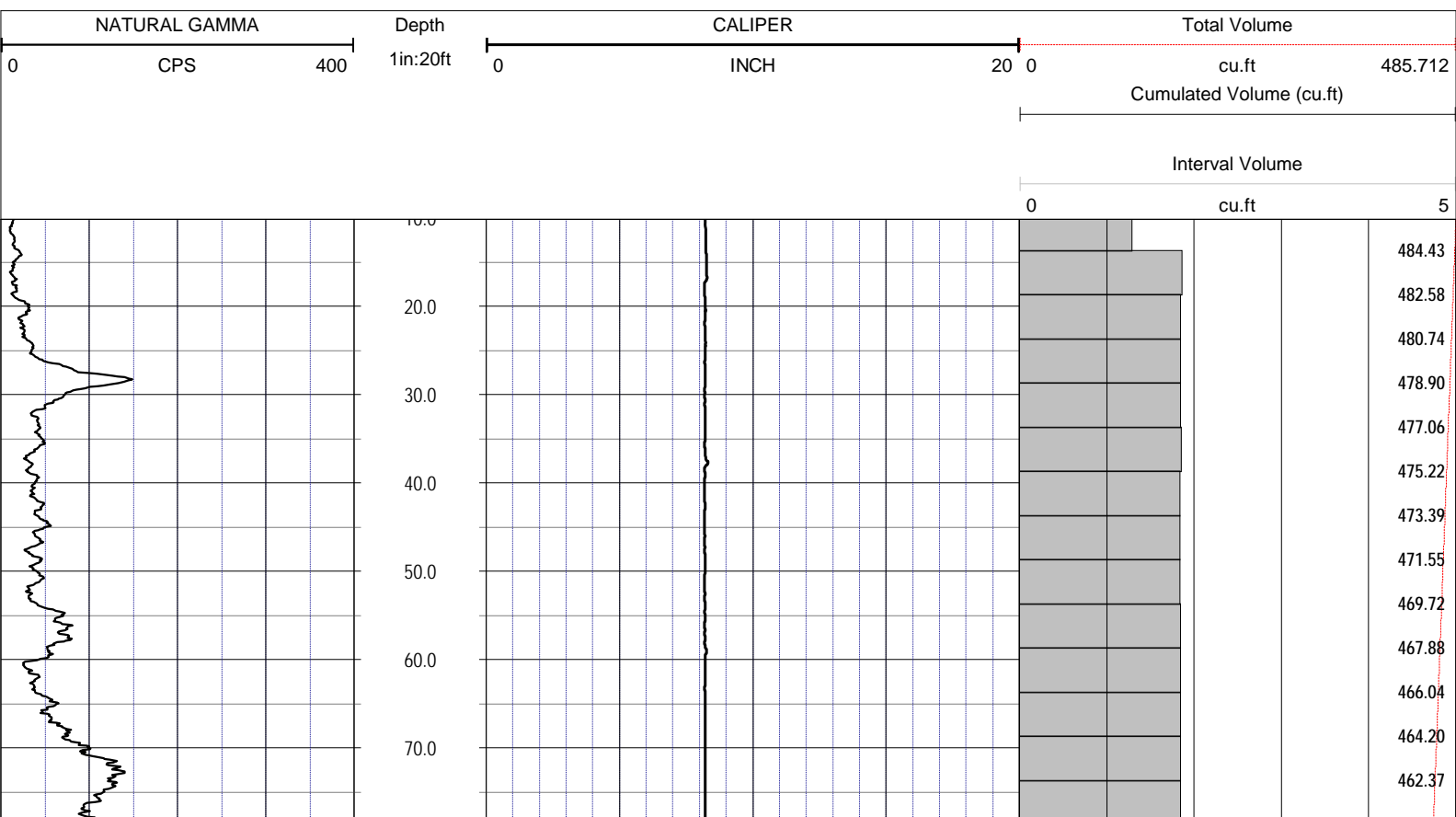
rob@rmbaker.com
www.rmbaker.com

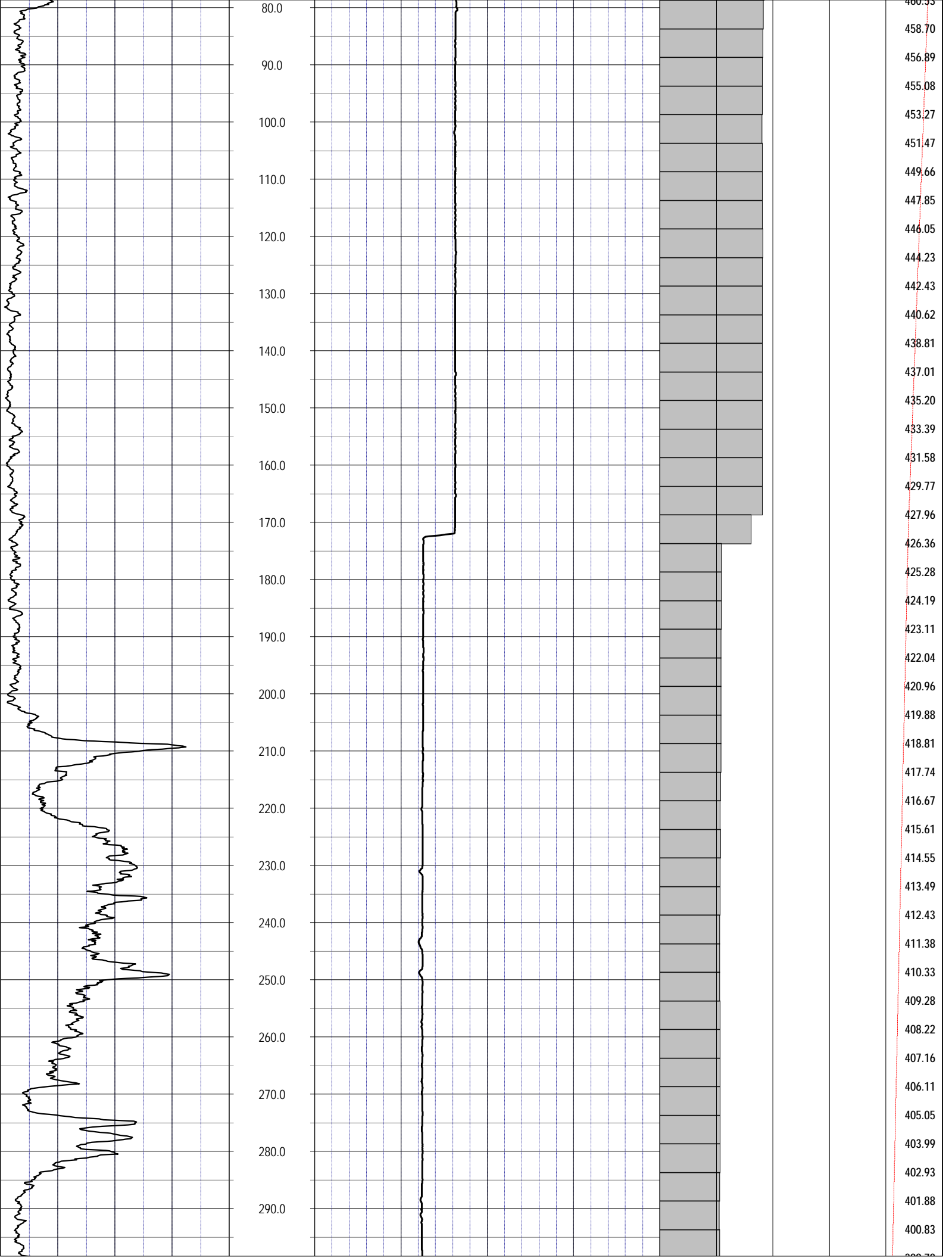
Licensed and Insured

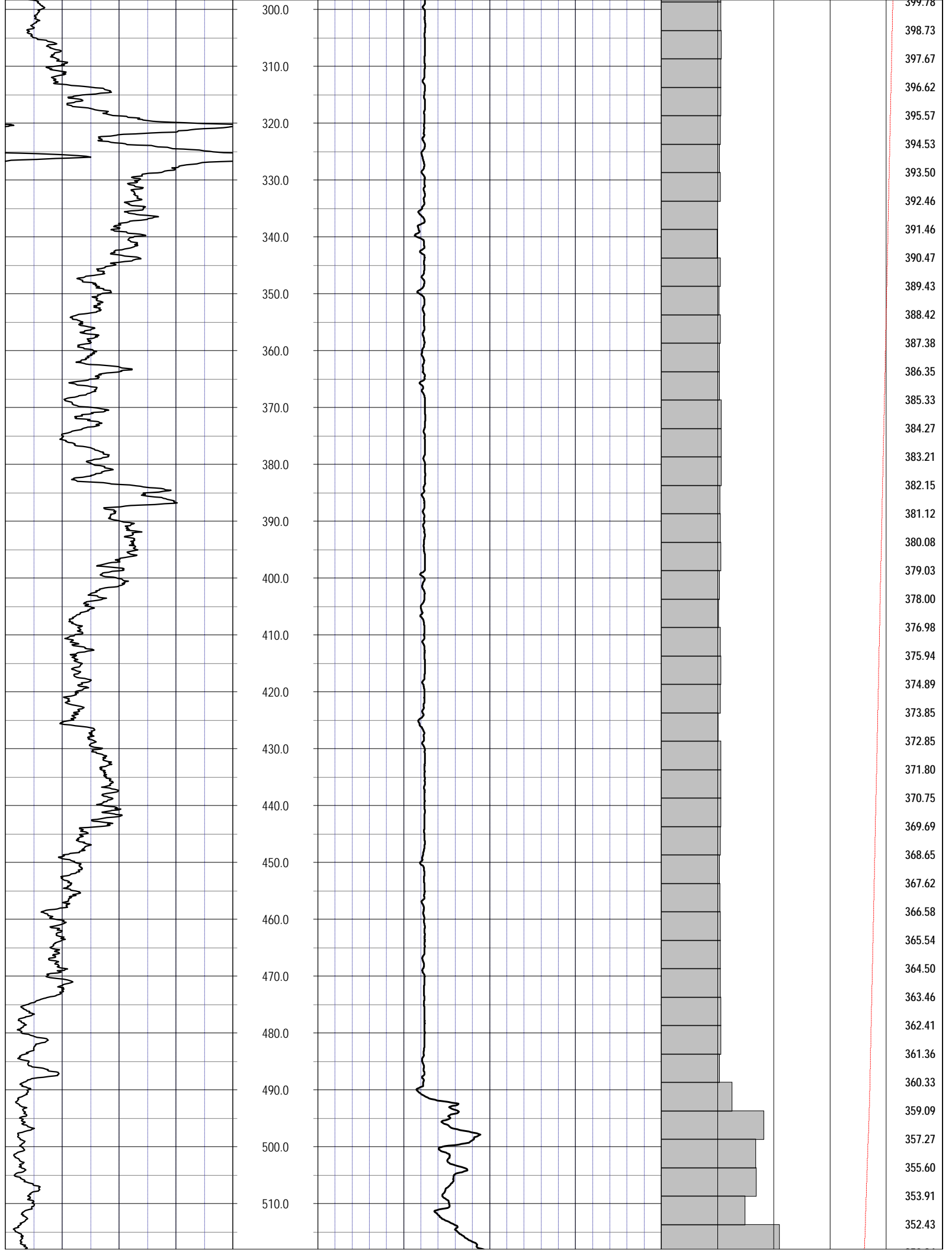
SRVC	RMBAKER LLC	COMPANY:	RMBAKER LLC
UWI	IMWI-NO2	WELL NAME:	IMWI-NO2
FLD	IMWI	FIELD:	IMWI
PROV	FL	COUNTRY:	USA
CTY	HIGHLANDS	STATE:	FL
		COUNTY:	HIGHLANDS
LOC:	N/A	ALL SERVICES:	CALIPER NATURAL GAMMA FLUID COND & TEMP VIDEO-PARTIAL ELECTRIC-PARTIAL
NOTES:	CASING REDUCED FROM 8 TO 6 INCHES AT 272 FEET	COORDINATES:	27.288213 -81.277208
PERMANENT DATUM:	ELEVATION:		
LOG MEAS. FROM:	GROUND SURFACE - 1.25 FEET BELOW TOP OF CASING		
DRILLING MEAS. FROM:			

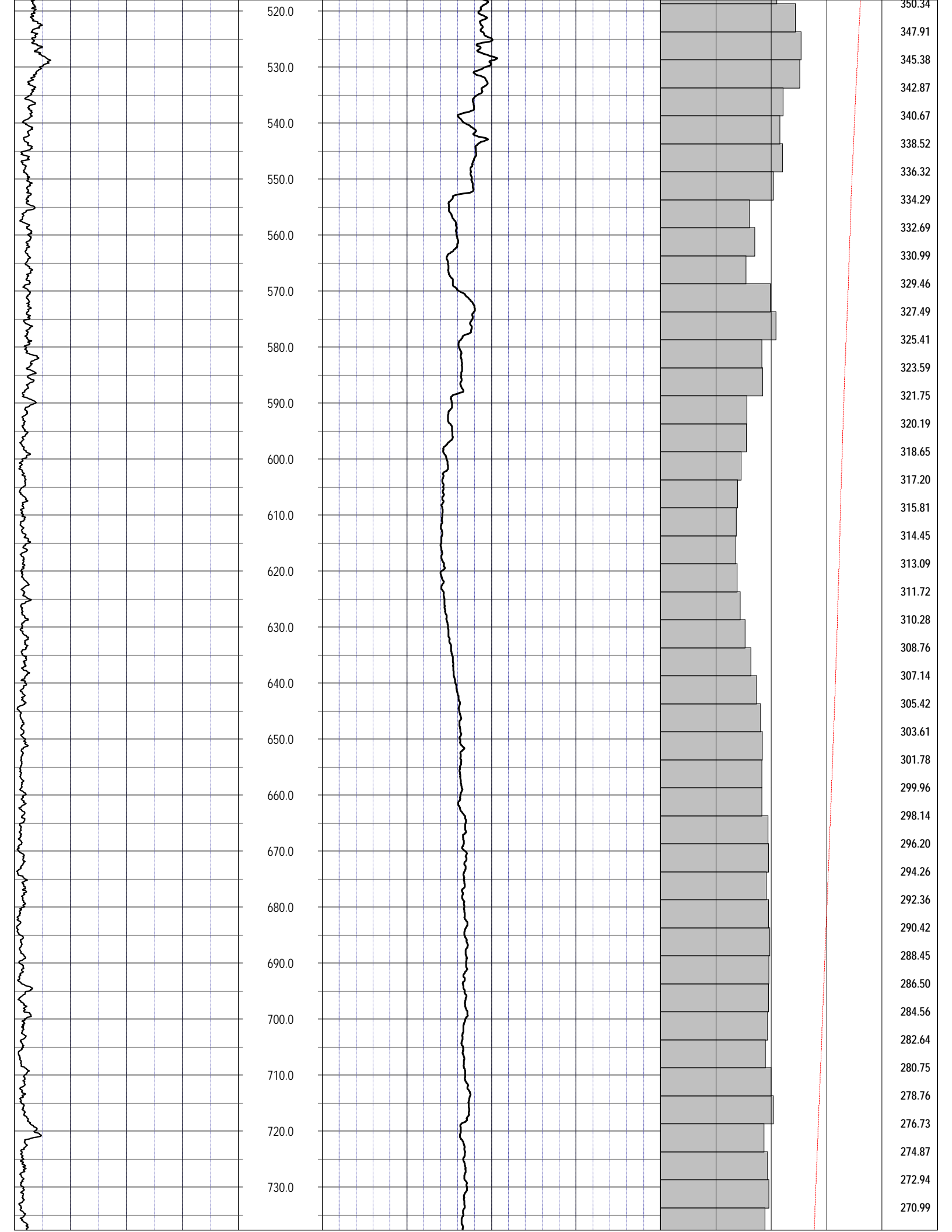
DATE	15 Aug 14	TYPE FLUID IN HOLE	WATER
RUN No	1	SALINITY	
TYPE LOG	CALIPER	DENSITY LEVEL	
DEPTH-DRILLER	1250	MAX. REC. TEMP.	
DEPTH-LOGGER	1429.55	LOGGING SPEED (FT/MIN)	30
BTM LOGGED INTERVAL		TROLLING DIRECTION	UP
TOP LOGGED INTERVAL		PUMPING RATE (GPM)	
DRILLER		ARTESIAN FLOW	
RECORDED BY	RMBAKER LLC		
WITNESSED BY	B. VERRASTRO		

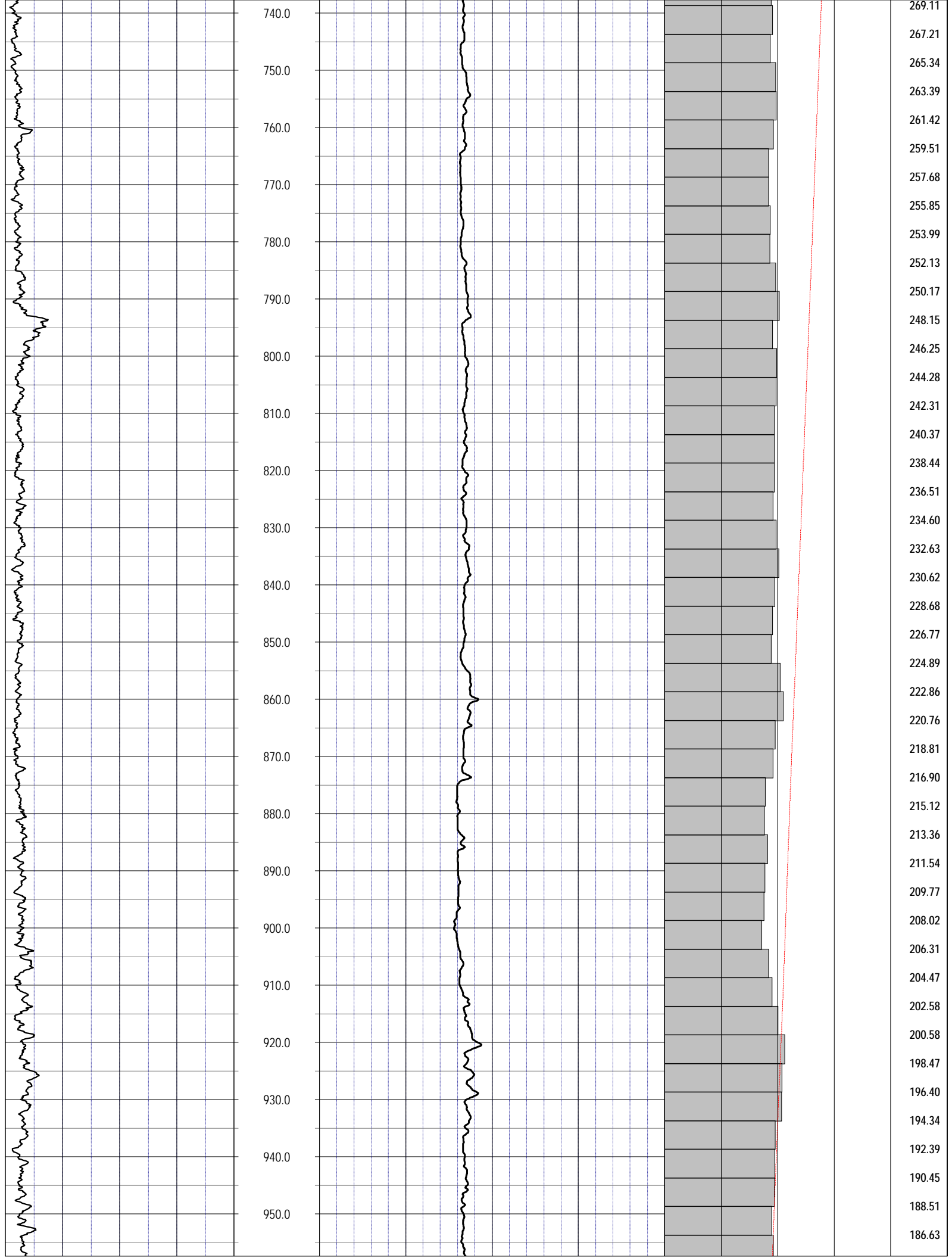
BOREHOLE RECORD				CASING RECORD			
RUN NO.	BIT	FROM	TO	SIZE	MAT.	FROM	TO
1	7.875	490	1429.55	8	STEEL	0	272
				6	STEEL	272	490

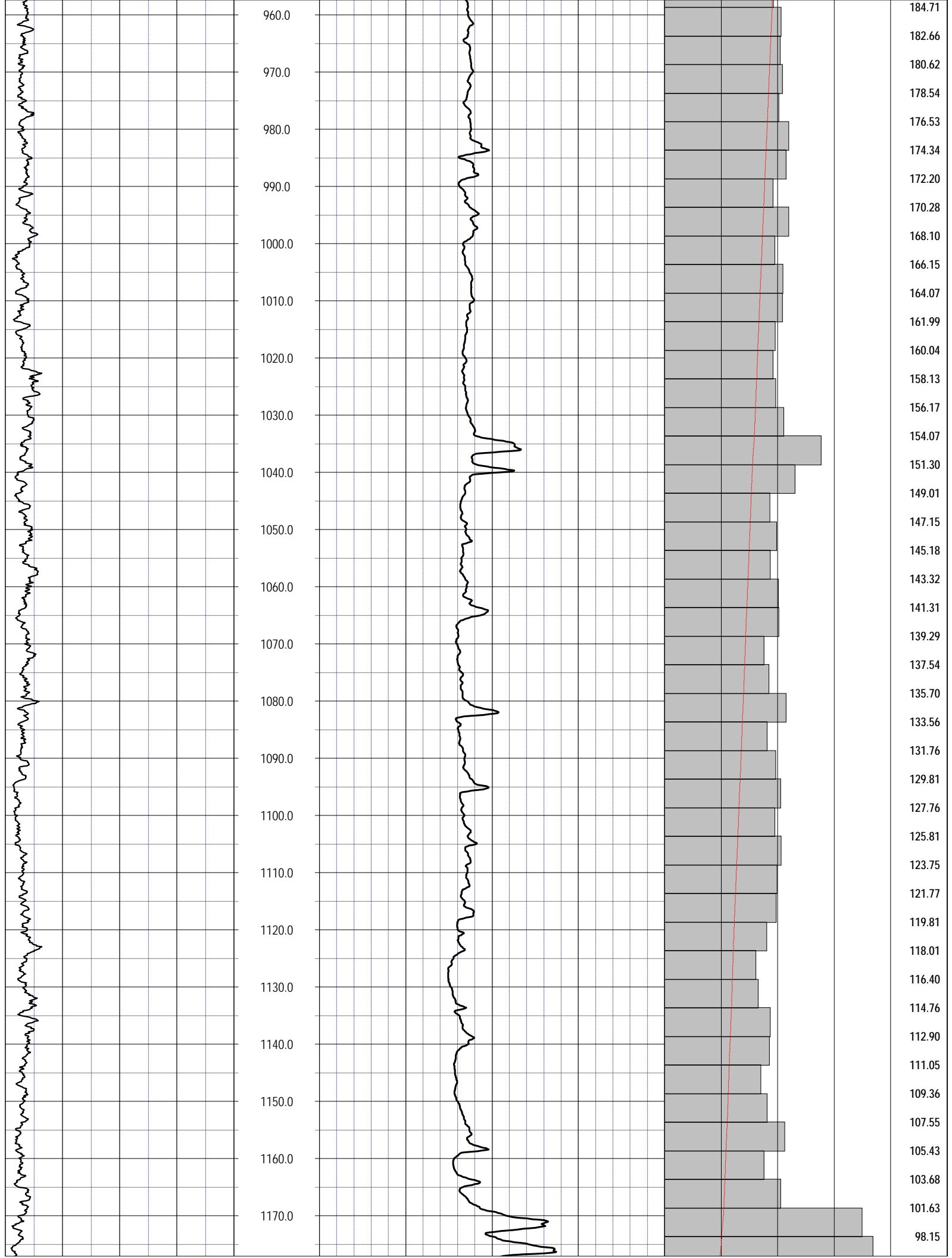


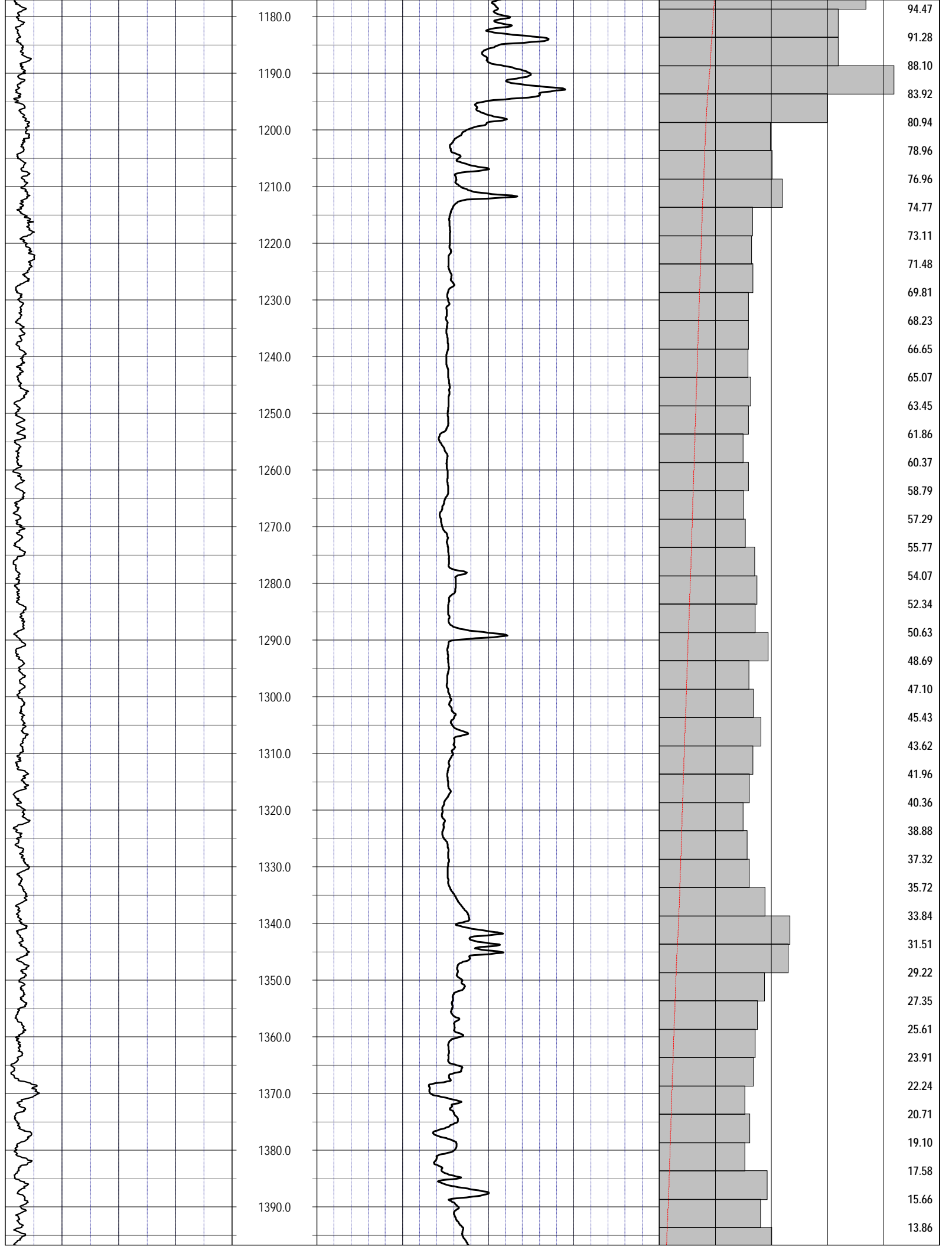


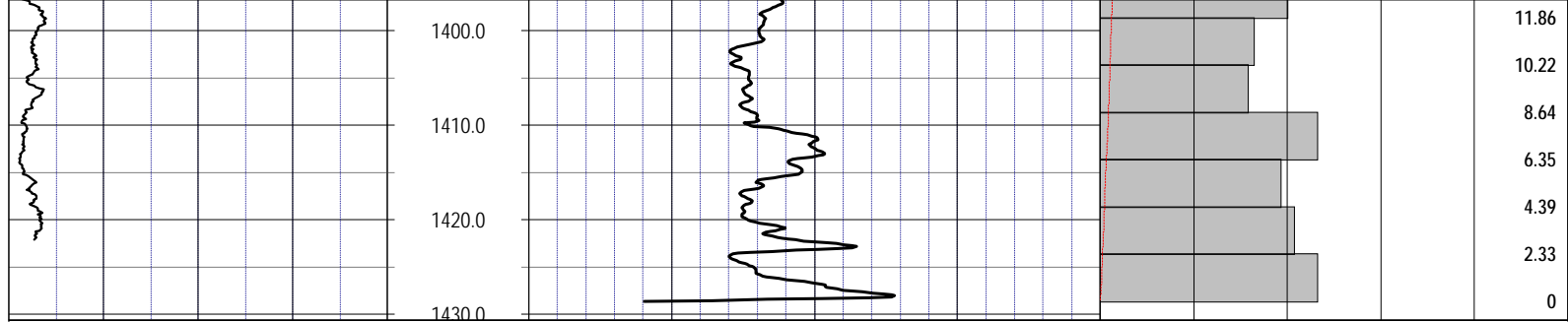












Interval Volume	0	5
cu.ft	0	5
Cumulated Volume (cu.ft)	0	485.712
Total Volume	0	485.712

NOTES:

While due care has been exercised in the performance of these measurements and observations, in accordance with methodologies utilized by the general practitioner, RIMBAKER LLC can make no representations, warranties, or guarantees with respect to latent or concealed conditions that may exist, which may be beyond the detection capabilities of the methodologies used, or that may extend beyond the areas and depths surveyed. The geophysical well logs show subsurface conditions as they existed at the dates and locations shown, and it is not warranted that they are representative of subsurface conditions at other locations and times. If, at any time, different subsurface conditions from those observed are determined to be present, we must be advised and allowed to review and revise our observations if necessary.

Certificate of Authorization GB 458

END OF LOG



RMBAKER LLC

Geology and Geophysics

WELL: IMWI-NO2
LOG STAGE: PRE-ABANDONMENT

8600 Oldbridge Lane
Orlando, FL 32819
mobile ph 407-733-8958
fax 407-370-4129

LOGS PROVIDED:
NORMAL RESISTIVITIES
NATURAL GAMMA
SPONTANEOUS POTENTIAL
SINGLE POINT RESISTIVITY

rob@rmbaker.com
www.rmbaker.com

Licensed and Insured

SRVC	RMBAKER LLC	COMPANY:	RMBAKER LLC
UWI	IMWI-NO2	WELL NAME:	IMWI-NO2
FLD	IMWI	FIELD:	IMWI
PROV	FL	COUNTRY:	USA
CTY	HIGHLANDS	STATE:	FL
		COUNTY:	HIGHLANDS
LOC:	N/A	NOTES:	ALL SERVICES: CALIPER NATURAL GAMMA FLUID COND & TEMP VIDEO-PARTIAL ELECTRIC-PARTIAL
SEC	TWP	RGE	COORDINATES:
			27.288213 -81.277208

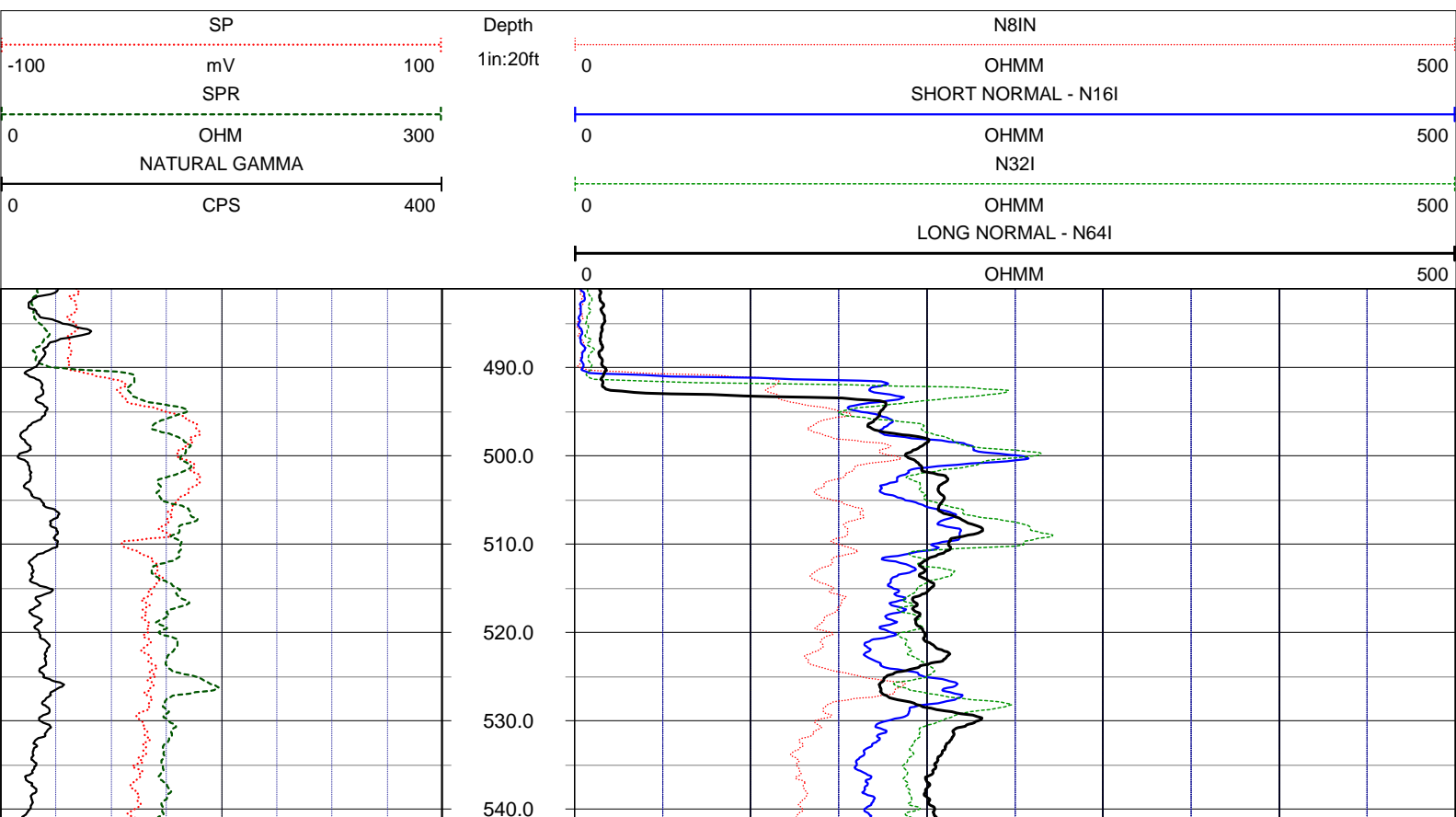
PERMANENT DATUM: ELEVATION:

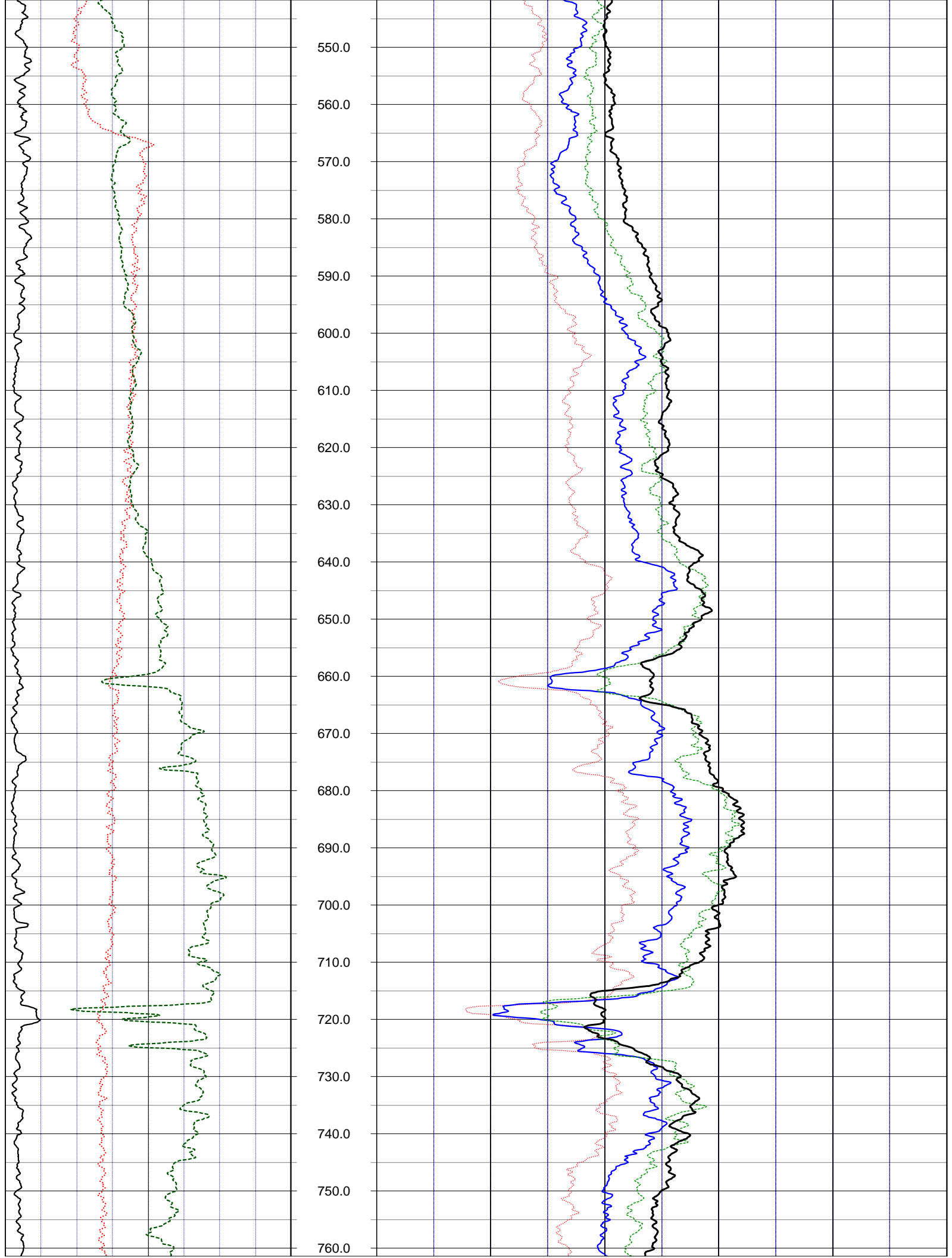
LOG MEAS. FROM: GROUND SURFACE - 1.25 FEET BELOW TOP OF CASING

DRILLING MEAS. FROM:

DATE	15 Aug 14	TYPE FLUID IN HOLE	WATER
RUN No	1	SALINITY	
TYPE LOG	ELECTRIC	DENSITY	
DEPTH-DRILLER	1250	LEVEL	
DEPTH-LOGGER	1429.55	MAX. REC. TEMP.	
BTM LOGGED INTERVAL		LOGGING SPEED (FT/MIN)	30
TOP LOGGED INTERVAL		TROLLING DIRECTION	UP
DRILLER		PUMPING RATE (GPM)	
RECORDED BY	RMBAKER LLC	ARTESIAN FLOW	
WITNESSED BY	B. VERRASTRO		

BOREHOLE RECORD				CASING RECORD			
RUN NO.	BIT	FROM	TO	SIZE	MAT.	FROM	TO
1	7.875	490	1429.55	8	STEEL	0	272
				6	STEEL	272	490







RMBAKER LLC

Geology and Geophysics

WELL: IMWI-NO2

LOG STAGE: PRE-ABANDONMENT

8600 Oldbridge Lane
Orlando, FL 32819
mobile ph 407-733-8958
fax 407-370-4129

LOGS PROVIDED:

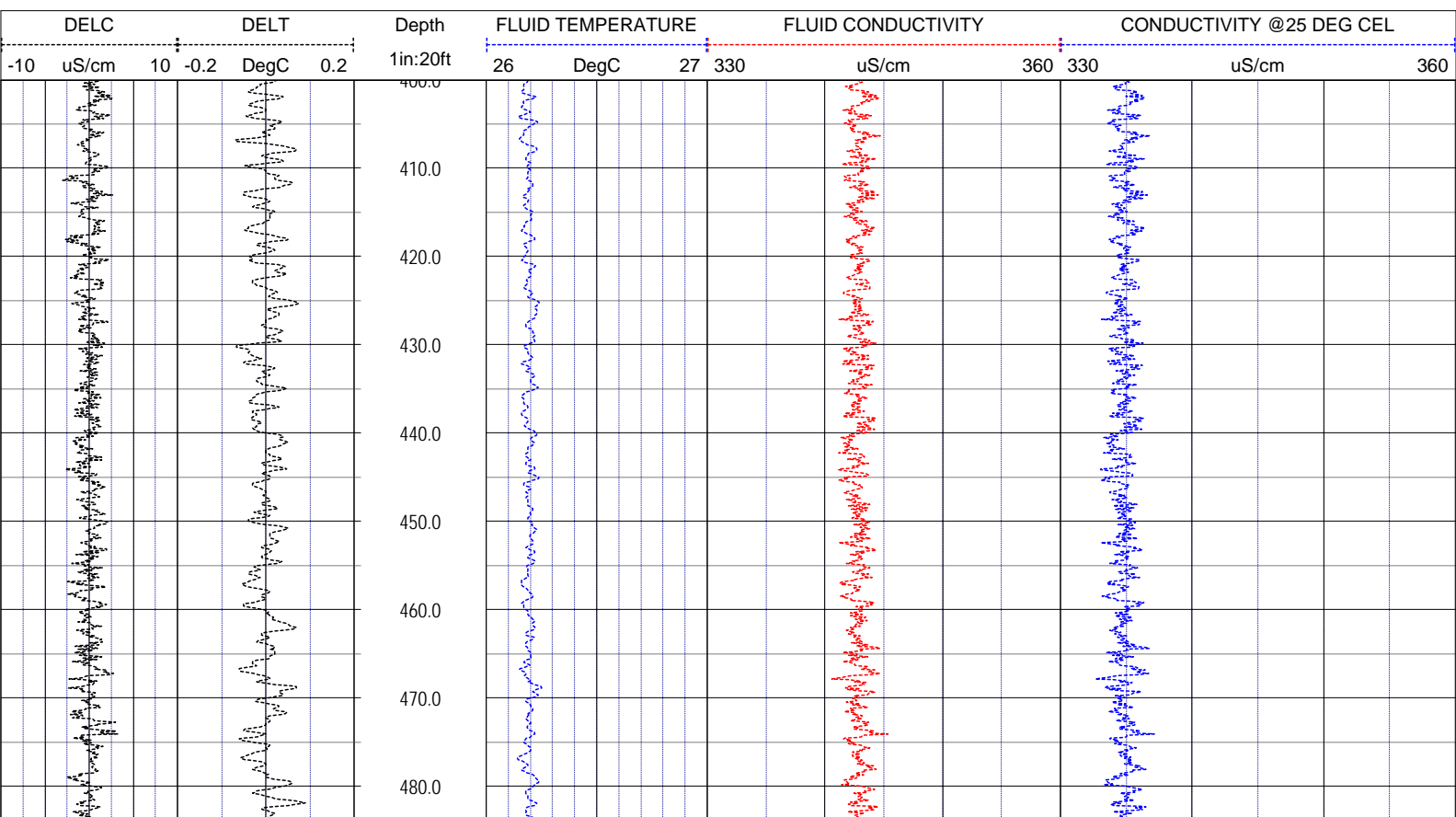
- FLUID CONDUCTIVITY
- FLUID TEMPERATURE
- DIFFERENTIAL CONDUCTIVITY
- DIFFERENTIAL TEMPERATURE
- CONDUCTIVITY AT 25 DEG CEL

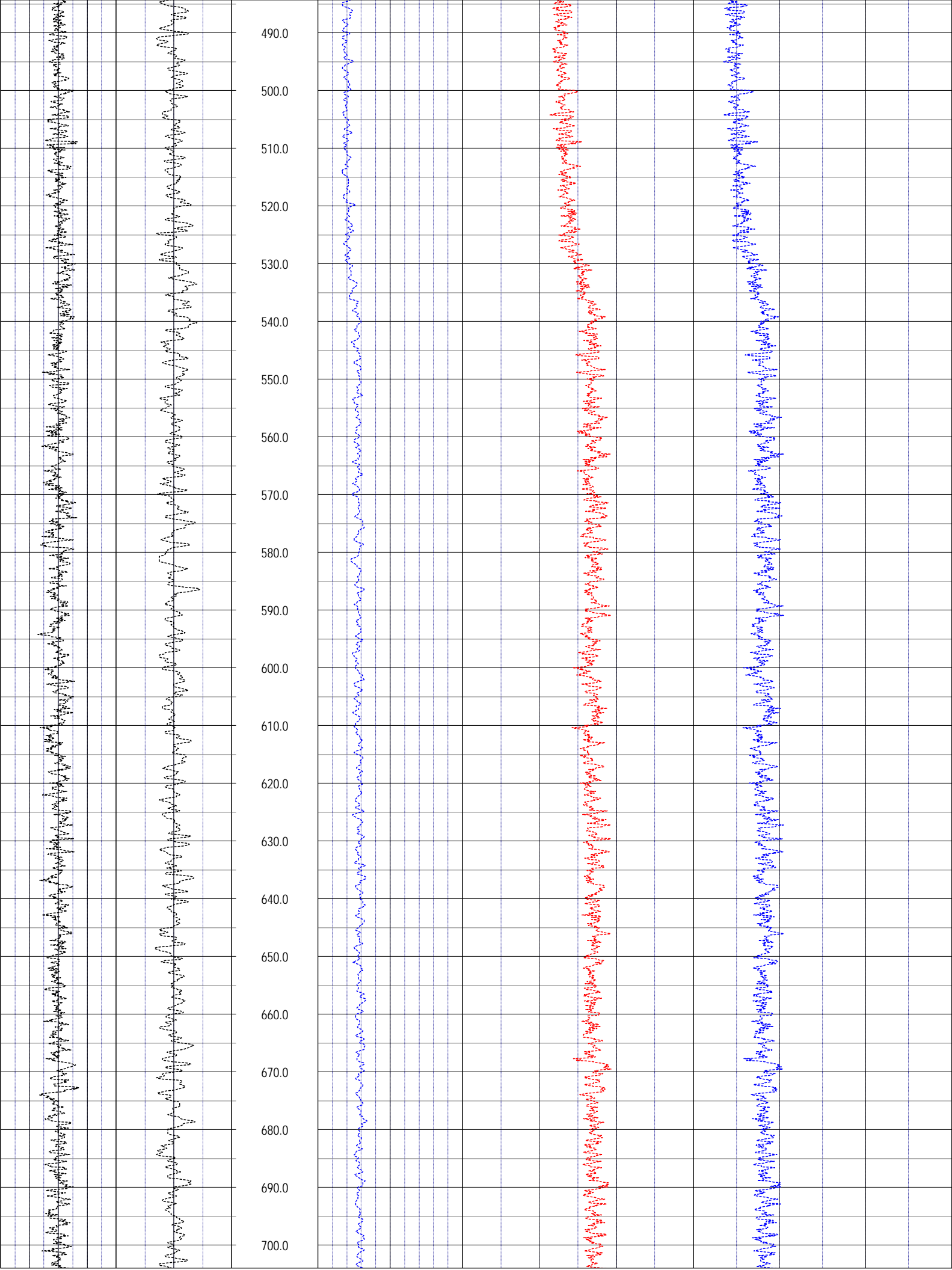
rob@rmbaker.com
www.rmbaker.com

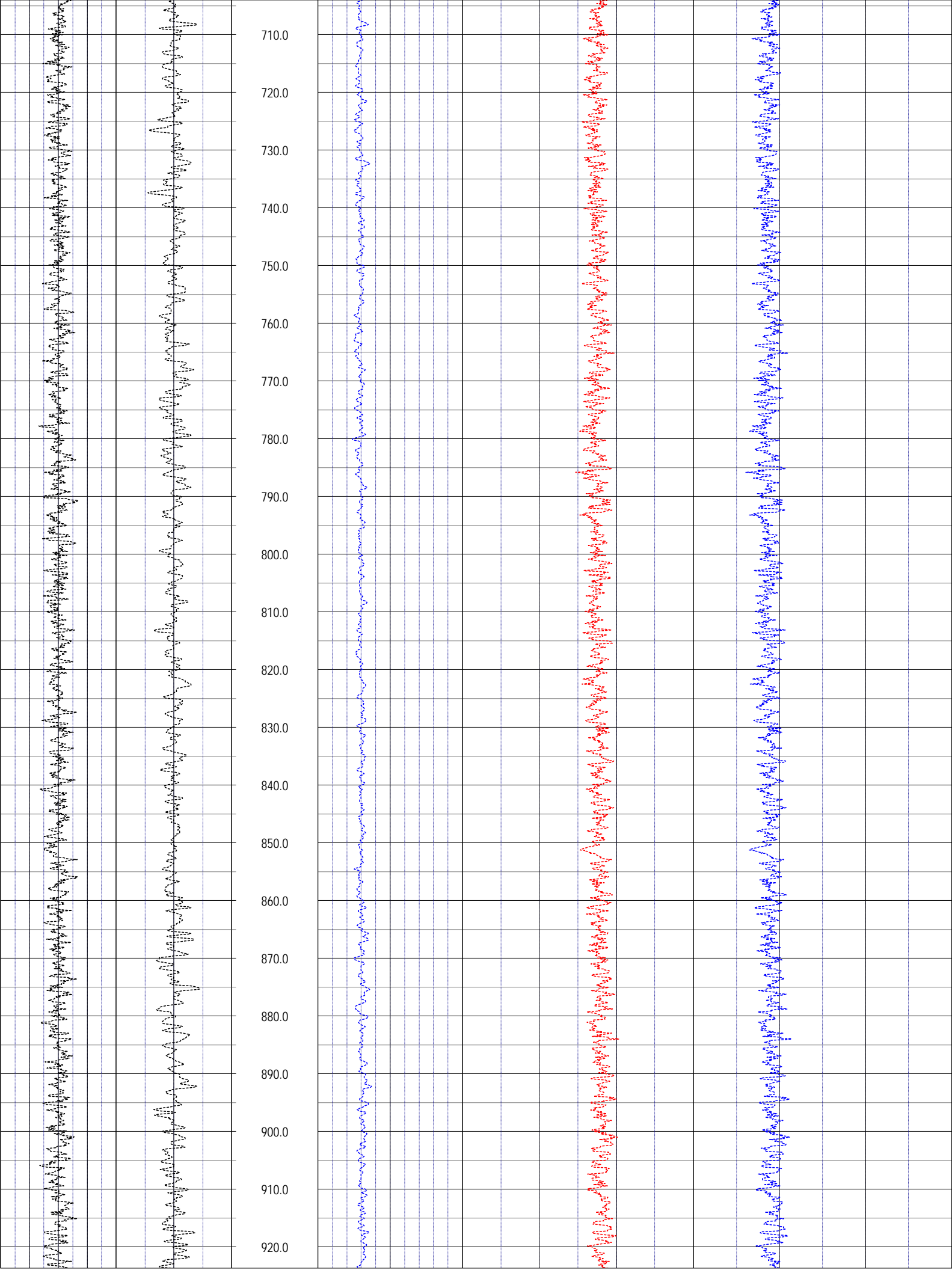
Licensed and Insured

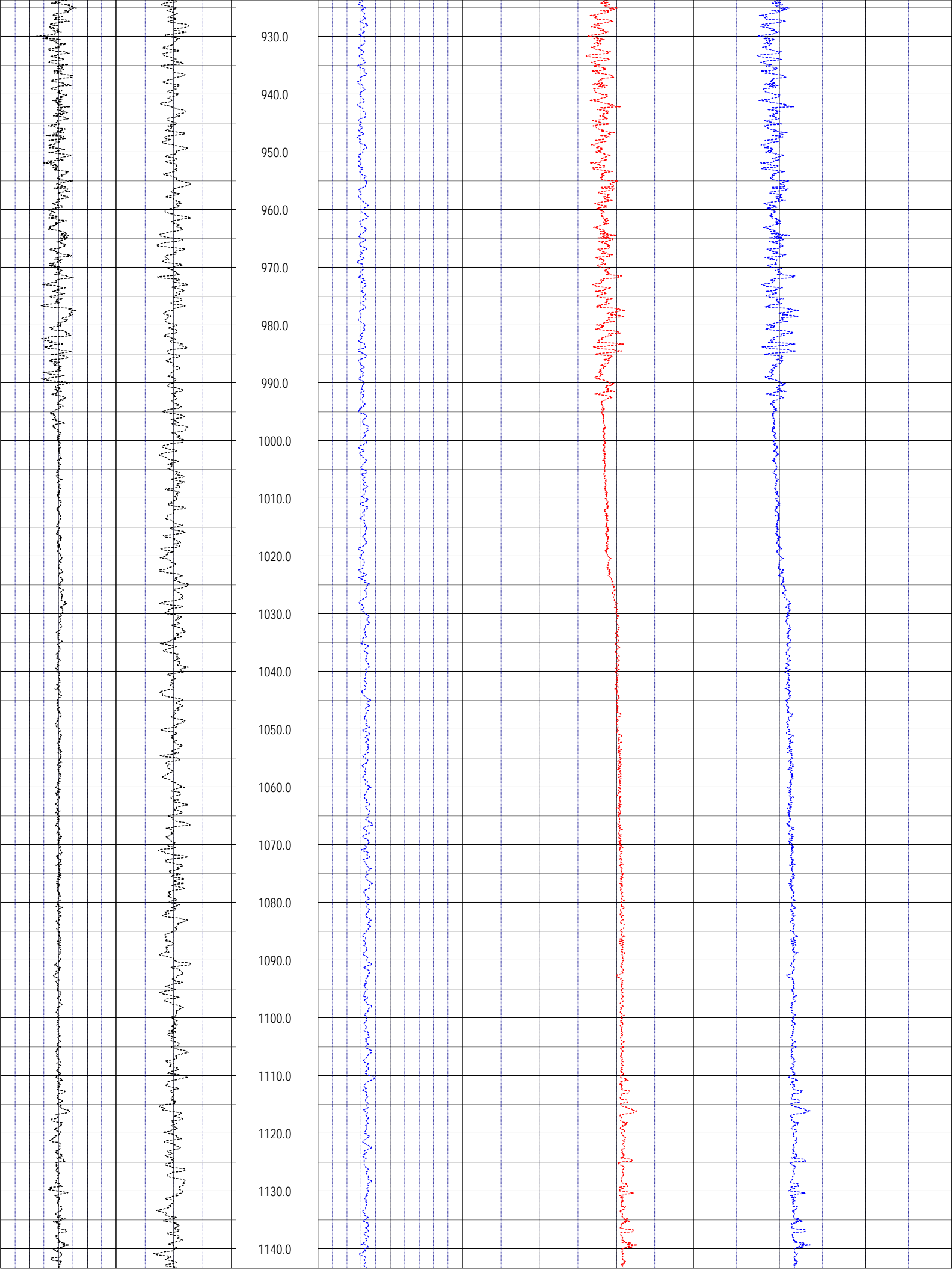
SRVC	RMBAKER LLC	COMPANY:	RMBAKER LLC
UWI	IMWI-NO2	WELL NAME:	IMWI-NO2
FLD	IMWI	FIELD:	IMWI
PROV	FL	COUNTRY:	USA
CTY	HIGHLANDS	STATE:	FL
		COUNTY:	HIGHLANDS
PERMANENT DATUM:	ELEVATION:	LOC:	ALL SERVICES:
		N/A	CALIPER
			NATURAL GAMMA
			FLUID COND & TEMP
			VIDEO-PARTIAL
			ELECTRIC-PARTIAL
LOG MEAS. FROM: GROUND SURFACE - 1.25 FEET BELOW TOP OF CASING	COORDINATES:	NOTES:	
		CASING REDUCED FROM 8 TO 6 INCHES AT 272 FEET	
DRILLING MEAS. FROM:			
DATE	15 Aug 14	TYPE FLUID IN HOLE	WATER
RUN No	1	SALINITY	
TYPE LOG	FLUID COND & TEMP	DENSITY	
DEPTH-DRILLER	1250	LEVEL	
DEPTH-LOGGER	1429.55	MAX. REC. TEMP.	
BTM LOGGED INTERVAL		LOGGING SPEED (FT/MIN)	35
TOP LOGGED INTERVAL		TROLLING DIRECTION	DOWN
DRILLER		PUMPING RATE (GPM)	ARTESIAN FLOW
RECORDED BY	RMBAKER LLC		
WITNESSED BY	B. VERRASTRO		

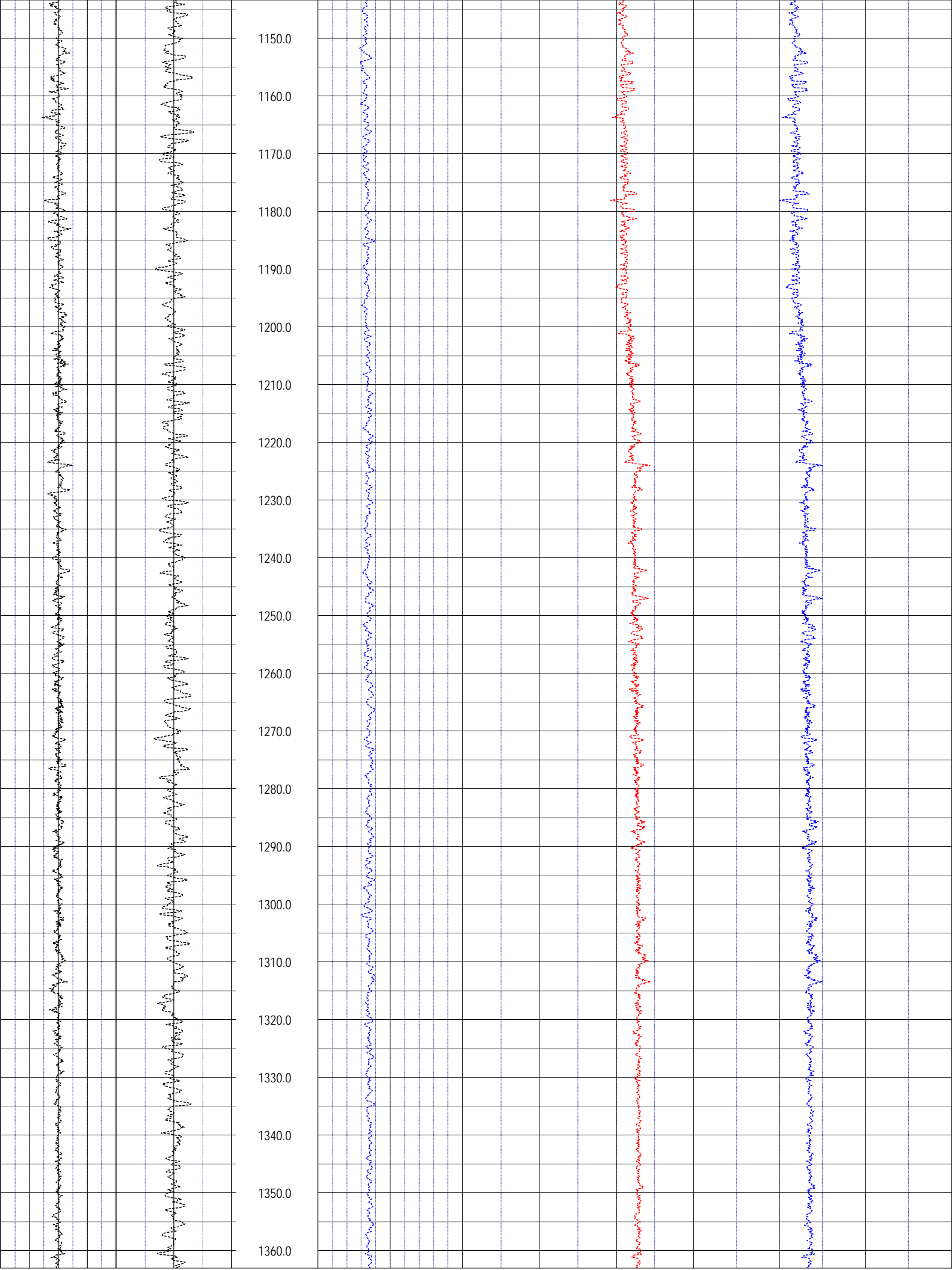
BOREHOLE RECORD				CASING RECORD			
RUN NO.	BIT	FROM	TO	SIZE	MAT.	FROM	TO
1	7.875	490	1429.55	8	STEEL	0	272
				6	STEEL	272	490

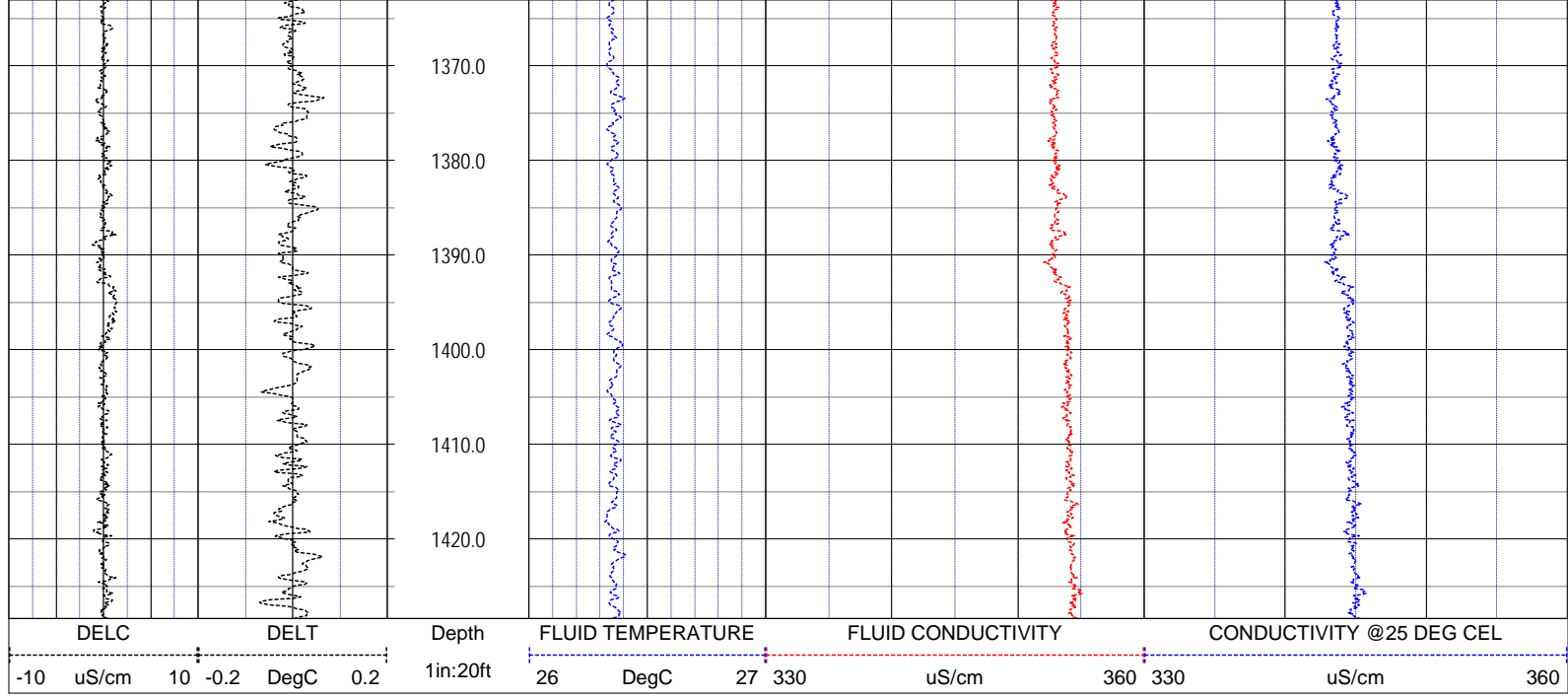












NOTES:

While due care has been exercised in the performance of these measurements and observations, in accordance with methodologies utilized by the general practitioner, RMBAKER LLC can make no representations, warranties, or guarantees with respect to latent or concealed conditions that may exist, which may be beyond the detection capabilities of the methodologies used, or that may extend beyond the areas and depths surveyed. The geophysical well logs show subsurface conditions as they existed at the dates and locations shown, and it is not warranted that they are representative of subsurface conditions at other locations and times. If, at any time, different subsurface conditions from those observed are determined to be present, we must be advised and allowed to review and revise our observations if necessary.

Certificate of Authorization GB 458

END OF LOG