

hec. 33 TWP 40 Rge 40

Bm Tie H-547 - Apix - 7 BRP 1969 @ Bee Line Hwy SR 710 & Indian Town Rd CR 706

HTA	+	H.I.	-	Elev	Remarks
Bm H-547	4.90	29.65		24.75	FND Good.
Bm-Apix			4.538	25.112	FND Good.
Bm 7 BRP 1969			5.04	24.61	FND Good.
Bm Apix	5.16	30.272		25.112	
7 BRP 1969			5.166	24.612	
Bm H-547			5.52	24.752	

hec. 24 TWP 40 Rge 42

Verify Bm JD-3 1993 Elevation & Check well JDSP MW3.

HTA	+	H.I.	-	Elev	Remarks
Bm JDSP MW3 2010	4.65			6.35	FND 2.65 N
Bm JD-3 1993		11.00	4.44	6.56	FND 2.70's
JDSP MW3 well			1.49	9.51	TAG 8.81 NAVD83 ✓
			<u>RF</u>		
JD-3 1993	4.60			6.56	
JDSP MW3 2010		11.16	4.81	6.35	✓

LEVELS FOR ELEVATION ON MONITORING WELL IN  
 JONATHAN DICKINSON STATE PARK IN SEC 24  
 TWP 40S RGE 42 MONITORING WELL JDSP MW3

STA + HI - ELEV. BMELEV

BM H&VD 29  
12.92

2.476  
4.81 15.38

T.P. 6.29  
0.98 9.09

3.57  
3.70 12.66

T.P. 5.19  
2.08 7.47

4.44  
2.83 11.91

T.P. 3.42  
3.85 8.49

4.91  
2.36 13.40

MONITORING WELL 3.89  
5.38 9.51  
 JDSP MW3

3.82 RETURN  
3.45 13.33

T.P. 4.84  
2.43 8.49

3.30  
3.97 11.79

COMMENTS

BM NG5 A170 1956 - BM FROM SFWMD. DATA BASE  
 RECOVERED IN GOOD CONDITION

PVC  
 A BLACK MAGIC X MARK ON WELL PLATFORM CASING  
 MARK IS ON N.W. SIDE OF PIPE.  
 UNABLE TO ATTACH BRASS TAG - PLACED TAG  
 ON RECORDER PLATFORM

CONT'D FROM Pg-32

STA	+	HI	-	ELEV.	BM ELEV.
T.P.		11.79		4.05 2.22	7.74
	4.93 2.34	12.67			
T.P.				2.13 5.14	10.54
	5.53 1.74	16.07			
BM.				3.16 <del>3.8</del> 4.12	12.91 12.92

COMMENTS

B.M. A 170 1950 SEE Pg-32

LEVELS FROM NGS BENCHMARK "M 34" 1933  
TO NGS BENCHMARK "A-170" 1965 FOR  
ELEVATION TO MONITORING WELL JDSP MW03 ON  
PG-32

STA + HI - ELEV BMELEV.

BM NGVD 29  
12.54

1.49  
5.78 14.03

T.P. 6.17 7.86  
1.10

6.39  
0.88 14.25

T.P. 1.88 12.37  
5.59

5.47  
1.80 17.84

T.P. 6.26 11.58  
1.01

1.83  
5.39 13.46

T.P. 6.20 7.26  
1.07

4.29  
2.98 11.55

T.P. 3.79 7.76  
3.48

4.18  
3.27 11.94

LEVEL - ZEISS NI-2 SERIAL # 163109  
REG TESTED 3-15-10 SEE PG-23 THIS BOOK

COMMENTS SECTION 24 TOWNSHIP 40S RANGE 42E

B.M. "M34" 1933 REGISTERED IN GOOD CONDITION  
ELEVATION FROM SFWMD DATA BASE

CONT'D FROM PG-34

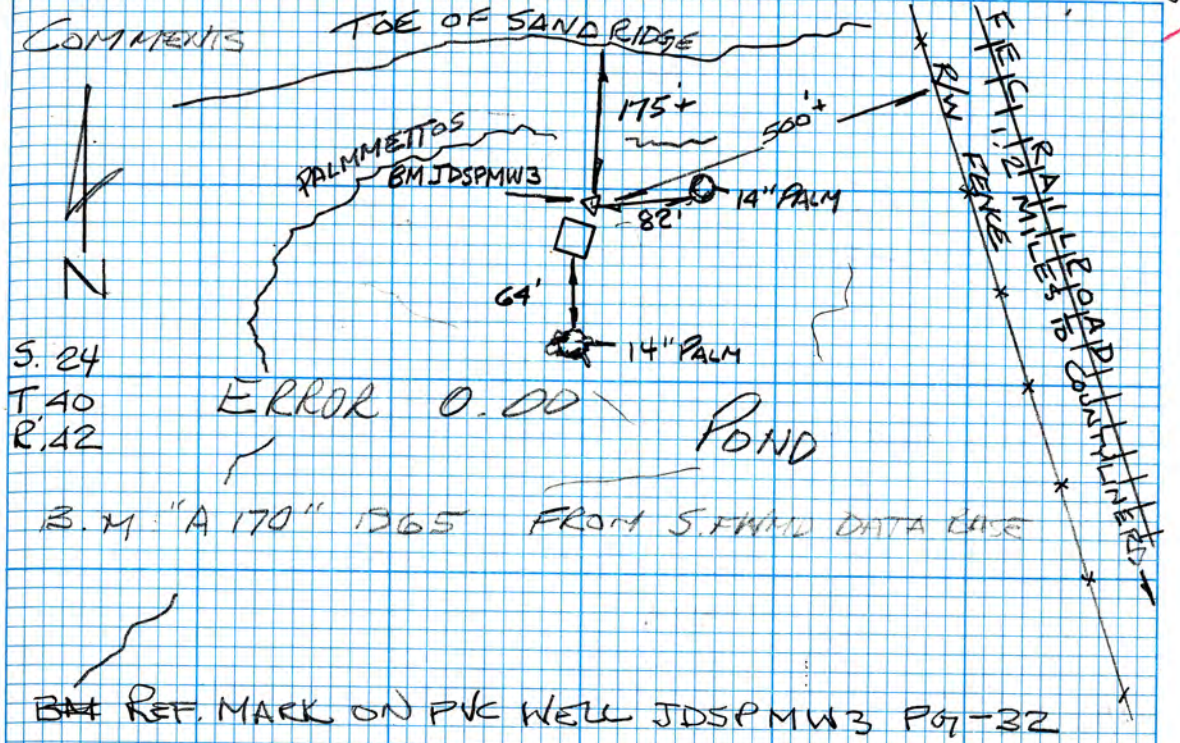
STA	+	HI	-	ELEV.	BN ELEV.
T.P.		11.94		4.50	7.44
	0.21 1.06	13.65			
T.P.				3.24	10.41
				4.03	
	3.70 3.57	14.11			
T.P.				4.33	9.78
				2.94	
	6.15 1.12	15.93			
T.P.				0.86	15.07
				6.41	
	6.66 0.01	21.73			
T.P.				4.31	17.42
				2.96	
	1.69 5.58	19.11			
T.P.				6.59	12.52
				0.03	
	2.91 4.36	15.43			
T.P.				6.42	9.01
				0.85	
	4.55 2.72	13.56			

COMMENTS

STA	+	HI	-	ELEV	BM ELEV.
		13.56			
T.P.			4.41	9.15	
			2.86		
	5.39	14.54			
	1.88				
T.P.			3.11	11.43	
			4.16		
	5.07	16.50			
	2.20				
B.M.			3.58	12.92	NGD29
			3.69	12.92	

LEVELS TO SET B.M. @ JDSPMW3

REF MARK				
			9.51	
	2.08	11.59		
	5.19			
BM			5.24	6.35
			2.03	
RETURN LEVELS				
			6.35	
	5.20	11.55		
	2.07			
BM			2.04	9.51
			5.23	9.51



BM JDSPMW3 IS A 1 1/4" X 12" GALV. IRON PIPE W/ A 8" CONC. COLLAR W/ A S.F.W.M.D ALONG DISK STAMPED BM JDSPMW3 2010 AND SET @ GROUND LEVEL. TO REACH FROM THE INTERSECTION OF US-1 AND COUNTY LINE RD @ THE MARTIN/PALM BEACH COUNTY LINE GO WEST ON COUNTY LINE RD 0.4 MILES TO THE F.E.C. RAILROAD. THEN GO NORTH ON EAST SIDE OF RAILROAD 1.2 MILES TO A SAND RIDGE ON W. SIDE OF RAILROAD. THEN BY FOOT GO 500' WEST OF THE W. R.R. R/W FENCE & 175' S. OF THE TOE OF SAND RIDGE AND STATION LOCATION. STATION IS 64' N OF A LONE 14" PALM, 82' WSW OF A LONE 14" PALM, 1.8' N.E. OF THE N. SIDE OF RECORDER AND 1.8' S.W. OF A 2" PVC PIPE BALLARD

M T HOLLIN  
 Ø GIANNARCO  
 Ø REICHERT

REFERENCE ELEVATION ON MONITORING WELL JDSPMW3  
 SEE PG-32 THIS BOOK

SOUTH FLORIDA WATER MANAGEMENT DISTRICT



Survey Data Entry and Retrieval Application (SDERA) Print Output

Control Point Search Results

Derived Data - Denoted By: \*\*

Designation	JDSPMW3	Record State	ACCEPTED
NGS PID			
Project Name	JDSPMW3 WELL SITE	Date Entered/Updated	10/13/2015
Updated By	hehmke	Status	
Party Chief	HOLLIN JR, ARTHUR	Type	V
Monument Set By	SOUTH FLORIDA WATER MANAGEMENT DISTRICT	Date Established	
County	MARTIN COUNTY	Section	24
Township	40	Range	42
Quadrangle		Offset (29 to 88)	1.486
NGS Source BM		CCR Link	
Ctrl Pt Source(s)			

Horizontal	NAD 1927	NAD 1983	Vertical	NGVD 1929	NAVD 1988
Latitude		26 59 02.09	Class		
Longitude		80 06 11.01	Order		
Northing(Y)			Elevation	6.355	5.057
Easting(X)			Measurement Unit	Feet	Feet
Class					
Order					
NAD83 Adj Year					

Field Book

Misc 6J

Field Book Pages

36

Stamping

JDSPMW3 2010



How to Reach

Benchmark JDSPMW3 is a 1-1/4 inch galvanized iron pipe with an 8-inch concrete collar with a South Florida Water Management District aluminum disk stamped BM JDSPMW3 2010 and set at ground level.

To reach: From the intersection of United States Highway 1 (US 1) and County Line Road at the Martin/Palm Beach County line, go West on County Line Road 0.4 of a mile to the F.E.C. Railroad; then go North on the east side of the railroad, 1.2 miles to a sand ridge on the West side of the railroad; then by foot go 500 feet more or less West of the West railroad right of way fence and 175 feet more or less South of the toe of the sand ridge and station location.

Station is 64 feet North of a lone 12-inch Palm tree, 82 feet West Southwest of a lone 14-inch Palm tree, 1.8 feet Northeast of the North side of the recorder and 1.8 feet Southwest of a 4-inch PVC Pipe bollard.

Description

a 1-1/4-inch galvanized iron pipe with an 8-inch concrete collar with a South Florida Water Management District aluminum disk.

DISCLAIMER:

The South Florida Water Management District (hereinafter referred to as the DISTRICT ) shall

not be held liable for improper or incorrect use of the data, information, apparatus, products, processes or materials described and/or contained herein. These data, information, apparatus, products, processes, materials and related graphics are not legal documents and are not intended to be used as such. The user hereby recognizes that the information, data, apparatus, products, processes and materials are dynamic and may change over time without notice. However, the DISTRICT makes no commitment to update the information, data, apparatus, products, processes or materials contained herein.



**SOUTH FLORIDA WATER MANAGEMENT DISTRICT**



Survey Data Entry  
and Retrieval Application

Survey Data Entry and Retrieval Application (SDERA) Print Output

**Control Point Search Results**

Derived Data - Denoted By: \*\*

Designation	JD3	Record State	ACCEPTED
NGS PID			
Project Name	JONATHAN DICKINSON STATE PARK	Date Entered/Updated	10/13/2015
Updated By	hehmke	Status	
Party Chief	SCHAFFER, ROBERT	Type	V
Monument Set By	SOUTH FLORIDA WATER MANAGEMENT DISTRICT	Date Established	05/28/1993
County	PALM BEACH COUNTY	Section	24
Township	40	Range	42
Quadrangle	JUPITER	Offset (29 to 88)	1.496
NGS Source BM		CCR Link	
Ctrl Pt Source(s)			

<u>Horizontal</u>	<u>NAD 1927</u>	<u>NAD 1983</u>	<u>Vertical</u>	<u>NGVD 1929</u>	<u>NAVD 1988</u>
Latitude		26 59 02.0	Class		
Longitude		80 06 11.0	Order		
Northing(Y)			Elevation	6.553	5.057
Easting(X)			Measurement Unit	Feet	Feet
Class					
Order					
NAD83 Adj Year					

Field Book  
Martin County Wells 8

Field Book Pages  
63

Stamping  
JD 3 1993

**How to Reach**  
From the intersection of United State Highway 1 and County Line Road, go West on County Line Road a distance of 0.4 of a mile to the railroad tracts; thence go Northerly along the railroad tracts a distance of 1.1 miles; thence westerly approximately 1000 feet to South Florida Water Management District (SFWMD) Well JDSP#3 and benchmark location.  
The mark is SFWMD aluminum disk set in concrete on the South side of the Well.



**Description**  
A South Florida Water Management District aluminum disk in concrete.

**DISCLAIMER:**  
The South Florida Water Management District (hereinafter referred to as the DISTRICT ) shall not be held liable for improper or incorrect use of the data, information, apparatus, products, processes or materials described and/or contained herein. These data, information, apparatus, products, processes, materials and related graphics are not legal documents and are not intended to be used as such. The user hereby recognizes that the information, data, apparatus, products, processes and materials are dynamic and may change over time without notice. However, the DISTRICT makes no commitment to update the information, data, apparatus, products, processes or materials contained herein.

# The NGS Data Sheet

See file [dsdata.txt](#) for more information about the datasheet.



```

PROGRAM = datasheet95, VERSION = 8.8
1      National Geodetic Survey,  Retrieval Date = OCTOBER
AD3007 *****
AD3007 DESIGNATION - A 170
AD3007 PID - AD3007
AD3007 STATE/COUNTY- FL/MARTIN
AD3007 COUNTRY - US
AD3007 USGS QUAD - JUPITER (1983)
AD3007
AD3007 *CURRENT SURVEY CONTROL
AD3007
AD3007* NAD 83(1986) POSITION- 26 58 55. (N) 080 05 56. (W) SCALED
AD3007* NAVD 88 ORTHO HEIGHT - 3.485 (meters) 11.43 (feet) ADJUSTED
AD3007
AD3007 GEOID HEIGHT - -27.510 (meters) GEOID12B
AD3007 DYNAMIC HEIGHT - 3.480 (meters) 11.42 (feet) COMP
AD3007 MODELED GRAVITY - 979,092.8 (mgal) NAVD 88
AD3007
AD3007 VERT ORDER - FIRST CLASS I
AD3007
AD3007.The horizontal coordinates were scaled from a topographic map and have
AD3007.an estimated accuracy of +/- 6 seconds.
AD3007.
AD3007.The orthometric height was determined by differential leveling and
AD3007.adjusted by the NATIONAL GEODETIC SURVEY
AD3007.in June 1991.
AD3007
AD3007.Significant digits in the geoid height do not necessarily reflect accuracy.
AD3007.GEOID12B height accuracy estimate available here.
AD3007
AD3007.The dynamic height is computed by dividing the NAVD 88
AD3007.geopotential number by the normal gravity value computed on the
AD3007.Geodetic Reference System of 1980 (GRS 80) ellipsoid at 45
AD3007.degrees latitude (g = 980.6199 gals.).
AD3007
AD3007.The modeled gravity was interpolated from observed gravity values.
AD3007
AD3007;
AD3007;SPC FL E - 293,720. 289,450. MT (+/- 180 meters Scaled)
AD3007
AD3007 SUPERSEDED SURVEY CONTROL
AD3007
AD3007 NGVD 29 (??/??/92) 3.938 (m) 12.92 (f) ADJ UNCH 1 1
AD3007
AD3007.Superseded values are not recommended for survey control.
AD3007
AD3007.NGS no longer adjusts projects to the NAD 27 or NGVD 29 datums.
AD3007.See file dsdata.txt to determine how the superseded data were derived.
AD3007
AD3007_U.S. NATIONAL GRID SPATIAL ADDRESS: 17RNK894847(NAD 83)
AD3007
AD3007_MARKER: DB = BENCH MARK DISK
AD3007_SETTING: 7 = SET IN TOP OF CONCRETE MONUMENT
AD3007_STAMPING: A 170 1956
AD3007_MARK LOGO: CGS
AD3007_MAGNETIC: N = NO MAGNETIC MATERIAL
AD3007_STABILITY: C = MAY HOLD, BUT OF TYPE COMMONLY SUBJECT TO

```

AD3007+STABILITY: SURFACE MOTION

AD3007\_SATELLITE: THE SITE LOCATION WAS REPORTED AS NOT SUITABLE FOR

AD3007+SATELLITE: SATELLITE OBSERVATIONS - April 26, 2001

AD3007

AD3007	HISTORY	- Date	Condition	Report By
AD3007	HISTORY	- 1956	MONUMENTED	CGS
AD3007	HISTORY	- 1972	GOOD	NGS
AD3007	HISTORY	- 1980	GOOD	FLDNR
AD3007	HISTORY	- 19910122	GOOD	NGS
AD3007	HISTORY	- 20010426	GOOD	GCYI

AD3007

AD3007 STATION DESCRIPTION

AD3007

AD3007'DESCRIBED BY NATIONAL GEODETIC SURVEY 1972

AD3007'3.3 MI N FROM JUPITER.

AD3007'ABOUT 3.3 MILES NORTH ALONG THE FLORIDA EAST COAST RAILWAY FROM  
AD3007'THE FREIGHT STATION AT JUPITER, IN SECTION 24, R 42 E, T 40 S,  
AD3007'0.85 MILE NORTH OF THE COUNTY LINE ROAD, 90 FEET EAST OF AND  
AD3007'ACROSS THE TRACK FROM MILEPOST 280, 74 FEET SOUTHWEST OF THE  
AD3007'CENTER LINE OF A BLACK TOP ROAD PARALLELING THE TRACK, 36.5 FEET  
AD3007'EAST OF THE EAST RAIL, 37 1/2 FEET SOUTHEAST OF A TELEPHONE POLE,  
AD3007'1 FOOT NORTHWEST OF A METAL WITNESS POST, 2 FEET BELOW THE LEVEL  
AD3007'OF THE TRACK AND SET IN THE TOP OF A CONCRETE POST PROJECTING  
AD3007'3 INCHES ABOVE THE LEVEL OF THE GROUND. NOTE-- A NEW MILEPOST  
AD3007'280 HAS BEEN ESTABLISHED AND THE MARK IS 80 FEET EAST OF AND  
AD3007'ACROSS THE TRACK FROM IT - INSTEAD OF 90. ONLY THE STUMP OF THE  
AD3007'TELEPHONE POLE REMAINS. THE TEMPORARY HEADQUARTERS OF THE JUPITER  
AD3007'HILLS GOLF CLUB ARE IMMEDIATELY EAST OF THE MARK.

AD3007

AD3007 STATION RECOVERY (1980)

AD3007

AD3007'RECOVERY NOTE BY FL DEPT OF NAT RES 1980

AD3007'RECOVERED IN GOOD CONDITION.

AD3007

AD3007 STATION RECOVERY (1991)

AD3007

AD3007'RECOVERY NOTE BY NATIONAL GEODETIC SURVEY 1991

AD3007'2.0 KM (1.2 MI) NORTHERLY ALONG U.S. HIGHWAY 1 FROM THE JUNCTION OF  
AD3007'STATE HIGHWAY 811 (INDIANTOWN ROAD) IN JUPITER, THENCE 0.5 KM (0.3  
AD3007'MI) WESTERLY ALONG COUNTY LINE ROAD, THENCE 1.4 KM (0.9 MI) NORTHERLY  
AD3007'ALONG THE FLORIDA EAST COAST RAILROAD, ACROSS THE TRACKS FROM A LARGE  
AD3007'ANTENNA, 11.1 M (36.4 FT) NORTHEAST OF THE NEAR RAIL, 0.6 M (2.0 FT)  
AD3007'BELOW THE LEVEL OF THE TRACK, 0.4 M (1.3 FT) NORTHWEST OF A WITNESS  
AD3007'POST, AND THE MONUMENT PROJECTS 0.1 M (0.3 FT) ABOVE THE GROUND  
AD3007'SURFACE.

AD3007

AD3007 STATION RECOVERY (2001)

AD3007

AD3007'RECOVERY NOTE BY G.C.Y., INCORPORATED 2001

AD3007'RECOVERED AS DESCRIBED.

\*\*\* retrieval complete.

Elapsed Time = 00:00:02

# The NGS Data Sheet

See file [dsdata.txt](#) for more information about the datasheet.



```

PROGRAM = datasheet95, VERSION = 8.8
1      National Geodetic Survey,  Retrieval Date =
AD3008 *****
AD3008 DESIGNATION - M 34
AD3008 PID - AD3008
AD3008 STATE/COUNTY- FL/MARTIN
AD3008 COUNTRY - US
AD3008 USGS QUAD - JUPITER (1983)
AD3008
AD3008 *CURRENT SURVEY CONTROL
AD3008
AD3008* NAD 83(1986) POSITION- 26 59 43. (N) 080 06 22. (W) SCALED
AD3008* NAVD 88 ORTHO HEIGHT - 3.367 (meters) 11.05 (feet) ADJUSTED
AD3008
AD3008 GEOID HEIGHT - -27.529 (meters) GEOID12B
AD3008 DYNAMIC HEIGHT - 3.362 (meters) 11.03 (feet) COMP
AD3008 MODELED GRAVITY - 979,093.5 (mgal) NAVD 88
AD3008
AD3008 VERT ORDER - FIRST CLASS I
AD3008
AD3008.The horizontal coordinates were scaled from a topographic map and have
AD3008.an estimated accuracy of +/- 6 seconds.
AD3008.
AD3008.The orthometric height was determined by differential leveling and
AD3008.adjusted by the NATIONAL GEODETIC SURVEY
AD3008.in June 1991.
AD3008
AD3008.WARNING-Repeat measurements at this control monument indicate possible
AD3008.vertical movement.
AD3008
AD3008.Significant digits in the geoid height do not necessarily reflect accuracy.
AD3008.GEOID12B height accuracy estimate available here.
AD3008
AD3008.The dynamic height is computed by dividing the NAVD 88
AD3008.geopotential number by the normal gravity value computed on the
AD3008.Geodetic Reference System of 1980 (GRS 80) ellipsoid at 45
AD3008.degrees latitude (g = 980.6199 gals.).
AD3008
AD3008.The modeled gravity was interpolated from observed gravity values.
AD3008
AD3008;
AD3008;SPC FL E - North East Units Estimated Accuracy
AD3008; 295,200. 288,720. MT (+/- 180 meters Scaled)
AD3008
AD3008 SUPERSEDED SURVEY CONTROL
AD3008
AD3008 NGVD 29 (??/??/92) 3.823 (m) 12.54 (f) ADJ UNCH 1 1
AD3008
AD3008.Superseded values are not recommended for survey control.
AD3008
AD3008.NGS no longer adjusts projects to the NAD 27 or NGVD 29 datums.
AD3008.See file dsdata.txt to determine how the superseded data were derived.
AD3008
AD3008_U.S. NATIONAL GRID SPATIAL ADDRESS: 17RNK886862(NAD 83)
AD3008
AD3008_MARKER: DB = BENCH MARK DISK
AD3008_SETTING: 7 = SET IN TOP OF CONCRETE MONUMENT
AD3008_STAMPING: M 34 1933 12.516

```

## DATASHEETS

AD3008\_MARK LOGO: CGS  
 AD3008\_MAGNETIC: N = NO MAGNETIC MATERIAL  
 AD3008\_STABILITY: C = MAY HOLD, BUT OF TYPE COMMONLY SUBJECT TO  
 AD3008+STABILITY: SURFACE MOTION

AD3008

AD3008	HISTORY	- Date	Condition	Report By
AD3008	HISTORY	- 1933	MONUMENTED	CGS
AD3008	HISTORY	- 1965	GOOD	CGS
AD3008	HISTORY	- 1972	GOOD	NGS
AD3008	HISTORY	- 1980	GOOD	FLDNR
AD3008	HISTORY	- 20010426	GOOD	GCYI

AD3008

AD3008 STATION DESCRIPTION

AD3008

AD3008'DESCRIBED BY COAST AND GEODETIC SURVEY 1965

AD3008'4.3 MI N FROM JUPITER.

AD3008'ABOUT 4.3 MILES NORTH ALONG THE FLORIDA EAST COAST RAILWAY FROM

AD3008'THE FREIGHT STATION AT JUPITER, IN SECTION 13, R 42 E, T 40 S,

AD3008'0.35 MILE SOUTH OF A ROAD CROSSING, 64 FEET NORTHEAST OF AND

AD3008'ACROSS THE TRACK FROM MILEPOST 279, 37.9 FEET NORTHEAST OF THE

AD3008'NORTHEAST RAIL, 75 FEET SOUTHWEST OF THE CENTER LINE OF A BLACK

AD3008'TOP ROAD, 50 YARDS SOUTHEAST OF A SMALL POND, 1.3 FEET SOUTHEAST

AD3008'OF A METAL WITNESS POST, 1 FOOT BELOW THE LEVEL OF THE TRACK

AD3008'AND SET IN THE TOP OF A CONCRETE POST PROJECTING 2 INCHES

AD3008'ABOVE THE LEVEL OF THE GROUND. NOTE-- THE MARK IS 65.5 FEET

AD3008'NORTHEAST OF AND ACROSS THE TRACK FROM MILEPOST 279, INSTEAD

AD3008'OF 64 FEET. ALSO, THERE IS A DIM TRAIL 13 FEET SOUTH OF THE

AD3008'MARK BUT IT DOES NOT CROSS THE RAILROAD.

AD3008

AD3008 STATION RECOVERY (1972)

AD3008

AD3008'RECOVERY NOTE BY NATIONAL GEODETIC SURVEY 1972

AD3008'RECOVERED IN GOOD CONDITION.

AD3008

AD3008 STATION RECOVERY (1980)

AD3008

AD3008'RECOVERY NOTE BY FL DEPT OF NAT RES 1980

AD3008'RECOVERED IN GOOD CONDITION.

AD3008

AD3008 STATION RECOVERY (2001)

AD3008

AD3008'RECOVERY NOTE BY G.C.Y., INCORPORATED 2001

AD3008'RECOVERED AS DESCRIBED.

\*\*\* retrieval complete.

Elapsed Time = 00:00:02



LEVELS TO ESTAB. ELEV @ WELL SITE #  
J.D.S.P. #2

### Jonathan Dickenson State Park

STA	+	H1	-	ELEV.	B.M. ELEV.
B.M.	4.69 (D)	17.23			(12.54)
M-34	2.58 (R)				
T.P.			7.19 (D)	10.04	
			0.08 (R)		
	11.16 (D)	21.20			
	2.11 (R)				
T.P.			5.41 (D)	15.79	
			1.86 (R)		
	0.24 (D)	16.03			
	7.03 (R)				
T.P.			6.81 (D)	9.22	
			0.46 (R)		
	4.54 (D)	13.76			
	2.73 (R)				
B.M.			6.14 (D)	7.62	1.000
J.D.#2			1.13 (R)		

### RETURN LEVELS

B.M.	6.57 (D)	14.19			(7.62)
	0.70 (R)				

CNTD. NEXT P.G.

MS

SCHAFFER  
HUSSEY

### COMMENT.

B.M. M-34 CEGS BRASS CAP IN CONC  
STAMPED M-34 1933 ELEV. = 16.516'

B.M. SET SWAMP ALLUM. CAP 6" X 18" I-PIPE IN CONC.  
INCASER IN AN 8" X 12" P.V.C. PIPE FLUSH W/ GROUND  
STAMPED (B.M. JD-2 1993)

B.M. # J.D.-2

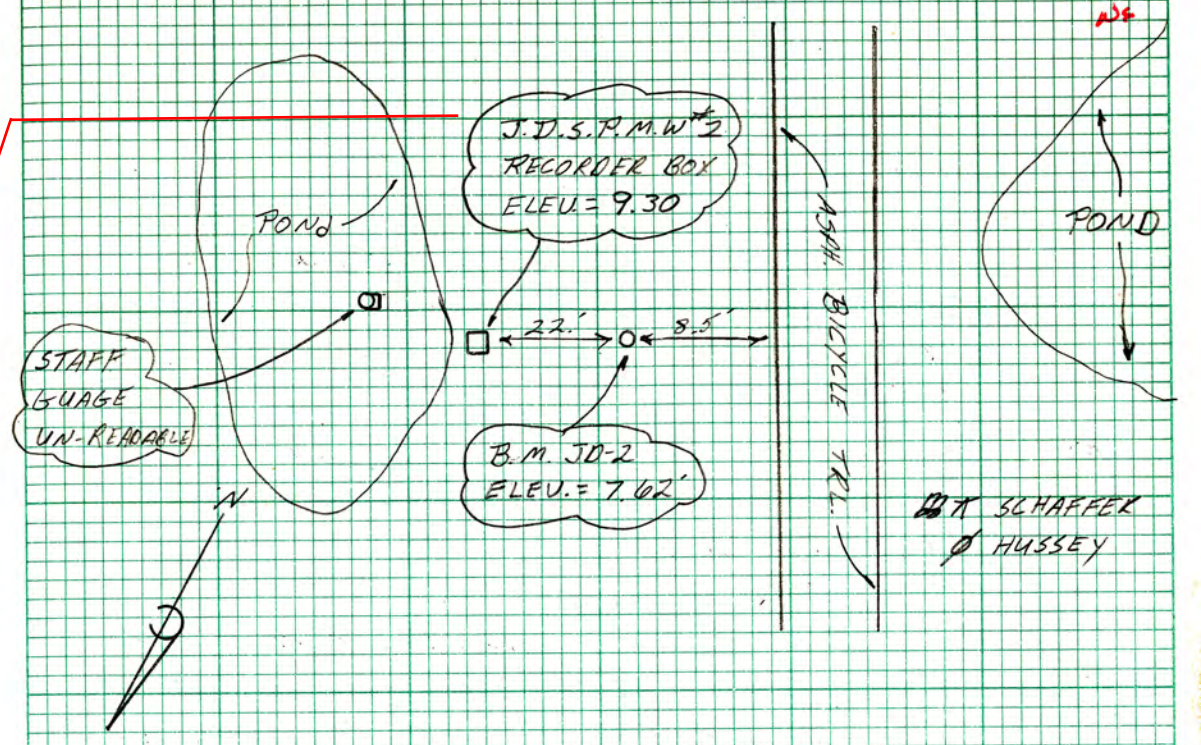
LEVELS CNTD.

STA	F	HI	-	ELEV.	BM ELEV.
		(14.19)			
T.P.			4.97 (D) 2.30 (R)	9.22	
	6.91 (D) 0.36 (R)	16.13			
T.P.			0.97 (D) 0.30 (R)	15.16	
	6.49 (D) 0.78 (R)	21.65			
T.P.			11.25 (D) 2.02 (R)	10.40	
	6.93 (D) 0.34 (R)	17.33			
B.M. m-34			7.79 (D) 2.48 (R)	12.54	(12.54) JD

WELL SITE # J.D.S.P. # 1

B.M.	5.39 (D) 1.88 (R)	13.01		(7.62)
w/s			8.18 (D) 4.83 (R)	✓
T.B.M.			3.71 (D) 3.56 (R)	9.30
		RETURN LEVELS		
T.B.M.	3.17 (D) 4.10 (R)	12.47		(9.30)
B.M.			4.85 (D) 2.42 (R)	7.62 ✓ (7.62)

SECT = 13 TWP = 40S RANG. = 42E.



B.M. m-34 SEE (PAGE 57)

B.M. J.D.#2

w/s STAFF GAUGE READS; ? .7? UN-READABLE

T.B.M. ON N.W. SIDE OF CUT OUT ON ALLUM RECORDER "X" MARK BOX BASE ASSUMED ELEV. = 25.00'

T.B.M. RECORDER BOX

B.M. J.D.-2



LEVELS TO ESTAB. ELEV. @ WELL SITE # JDSP #3

STA	HI	ELEV.	BM. ELEV.
B.M. M-34	2.30 (D) 4.77 (R)	15.04	12.54
T.P.		7.80 (D) 5.47 (R)	7.24
	5.10 (D) 2.17 (R)	12.34	
T.P.		1.42 (D) 5.85 (R)	10.92
	5.88 (D) 1.39 (R)	16.80	
T.P.		4.98 (D) 2.29 (R)	11.82
	2.69 (D) 4.58 (R)	14.51	
T.P.		8.25 (D) 5.02 (R)	6.26
	4.48 (D) 2.79 (R)	10.74	
T.P.		2.75 (D) 4.52 (R)	7.99
	2.76 (D) 4.51 (R)	10.75 ✓	✓

B.M. M-34 SEE PG # 57

(60) MARTIN CO. WELLS FB # 8 05/28/93

LEVELS CNTD.

STA	H1	ELEV.	B.M. ELEV.
	(10.75)		
T.P.		4.38 (D) 2.89 (R)	6.37
	9.19 (D) 4.08 (R)		15.56
T.P.		7.45 (D) 5.82 (R)	8.11
	5.79 (D) 1.48 (R)		13.90
T.P.		1.80 (D) 5.47 (R)	12.10
	8.94 (D) 4.33 (R)		21.04
T.P.		2.80 (D) 4.47 (R)	18.24
	1.01 (D) 6.26 (R)		19.25
T.P.		12.36 (D) 0.91 (R)	6.89
	3.90 (D) 3.37 (R)		10.79
T.P.		4.28 (D) 2.99 (R)	6.51
	6.00 (D) 1.27 (R)		12.51
B.M.		5.96 (D)	6.55 ✓
J.P. + 3		1.81 (R)	

RETURN LEVELS NEXT PG.

MARTIN CO. WELLS FB # 8 05/28/93 (60)

COMMENT

NS

B.M. SET SF WMD ALUM. CAP 1" X 18" I-PIPE IN CONC. UNCASED IN AN 8 X 12 P.V.C. PIPE STAMPED (B.M. JP-3 1993)

RETURN LEVELS

STA	T	H1	-	ELEV.	B.M. ELEV.
B.M.	6.35 (D)	12.90			(6.35)
J.P.-3	0.92 (R)				
T.P.			6.15 (D)	6.75	
			1.12 (R)		
	3.87 (D)	10.62			
	3.40 (R)				
T.P.			3.72 (D)	16.90	
			3.55 (R)		
	12.23 (D)	19.13			
	1.04 (R)				
T.P.			1.14 (D)	17.99	
			16.13 (R)		
	2.95 (D)	20.94			
	4.32 (R)				
T.P.			7.86 (D)	13.08	
			5.41 (R)		
	1.24 (D)	14.32			
	6.03 (R)				
T.P.			5.59 (D)	8.73	
			1.68 (R)		
	6.48 (D)	15.21			
	0.79 (R)				
T.P.			8.37 (D)	16.84	
			4.90 (R)		
	4.39 (D)	11.23 ✓			
	2.88 (R)				

JD

NS

COMMENT

B.M. JD-3

LEVELS CONTD.

STA + HI - ELEV. BM. ELEV.

(11.23)

T.P. 3.43 (D) 7.80  
3.84 (R)

3.27 (D) 11.07  
4.00 (R)

T.P. 4.90 (D) 6.17  
2.37 (R)

9.30 (D) 15.47  
3.97 (R)

T.P. 3.66 (D) 11.81  
3.61 (R)

4.68 (D) 16.49  
2.59 (R)

T.P. 5.56 (D) 10.93  
1.71 (R)

1.23 (D) 12.16  
6.04 (R)

T.P. 4.13 (D) 8.03  
3.14 (R)

6.57 (D) 14.60  
0.70 (R)

B.M. 2.06 (D) 12.54 ✓ (12.54)  
M-34 5.21 (R)

SD

MS

COMMENT

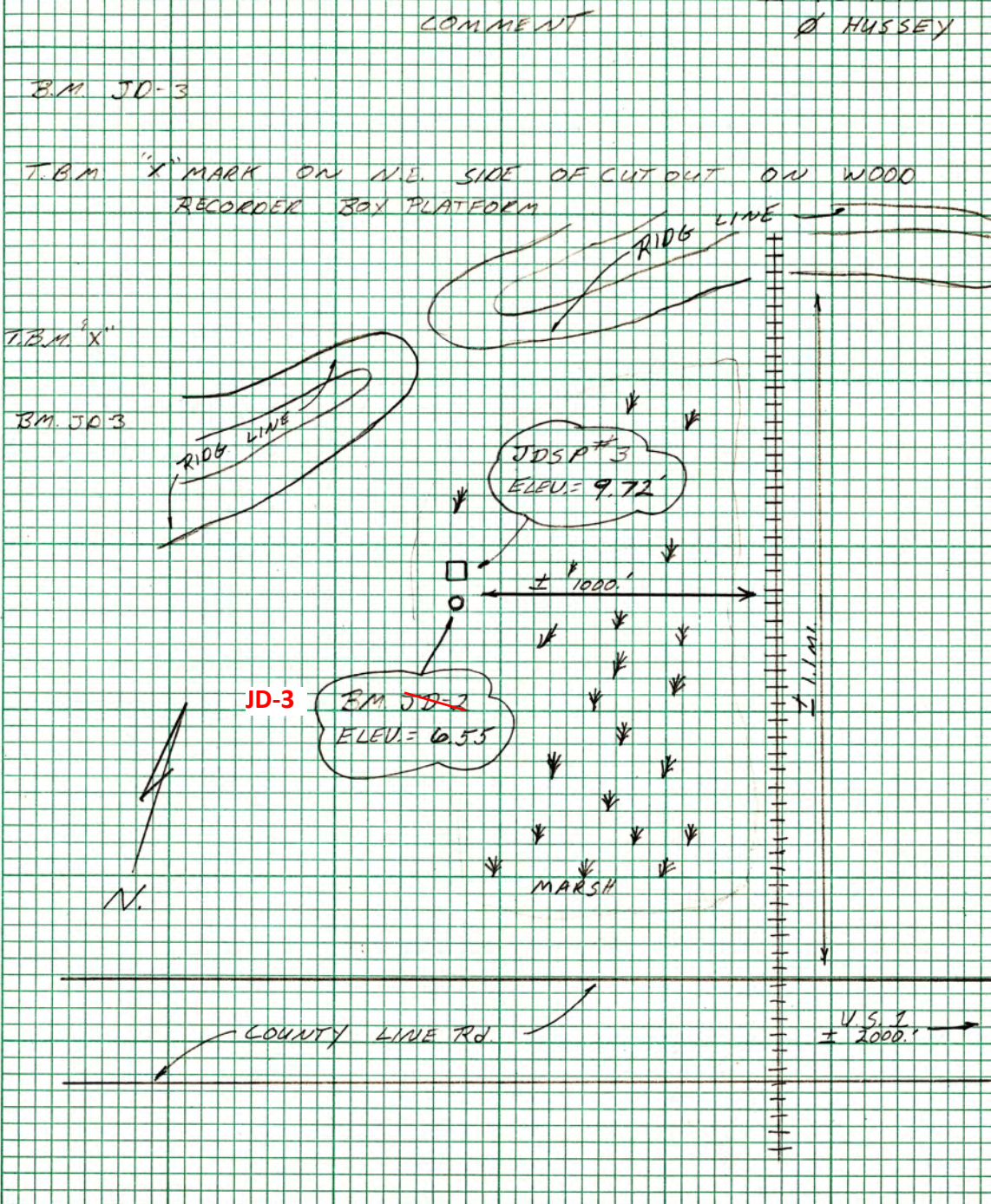
B.M. M-34 SEE (PG 57)

WELL SITE JDSP #3

STA	+	HI	-	ELEV.	B.M. ELEV.
B.M.	4.57	(⊕)	11.12		(6.55)
JD-3	2.70	(R)			
T.B.M.			1.40	(⊕)	9.72
			5.87	(R)	
RETURN LEVELS					
T.B.M.	0.87	(⊕)	10.59		
	6.40	(R)			
B.M.			4.04	(⊕)	6.55 ✓ JD
JD-3			3.23	(R)	

SECT. = 24 TWP. = 40S R. 16. = 42E

BY T. SCHAFFER  
O. HUSSEY



# The NGS Data Sheet

See file [dsdata.txt](#) for more information about the datasheet.



```

PROGRAM = datasheet95, VERSION = 8.8
1      National Geodetic Survey,  Retrieval Date =
AD3008 *****
AD3008 DESIGNATION - M 34
AD3008 PID - AD3008
AD3008 STATE/COUNTY- FL/MARTIN
AD3008 COUNTRY - US
AD3008 USGS QUAD - JUPITER (1983)
AD3008
AD3008 *CURRENT SURVEY CONTROL
AD3008
AD3008* NAD 83(1986) POSITION- 26 59 43. (N) 080 06 22. (W) SCALED
AD3008* NAVD 88 ORTHO HEIGHT - 3.367 (meters) 11.05 (feet) ADJUSTED
AD3008
AD3008 GEOID HEIGHT - -27.529 (meters) GEOID12B
AD3008 DYNAMIC HEIGHT - 3.362 (meters) 11.03 (feet) COMP
AD3008 MODELED GRAVITY - 979,093.5 (mgal) NAVD 88
AD3008
AD3008 VERT ORDER - FIRST CLASS I
AD3008
AD3008.The horizontal coordinates were scaled from a topographic map and have
AD3008.an estimated accuracy of +/- 6 seconds.
AD3008.
AD3008.The orthometric height was determined by differential leveling and
AD3008.adjusted by the NATIONAL GEODETIC SURVEY
AD3008.in June 1991.
AD3008
AD3008.WARNING-Repeat measurements at this control monument indicate possible
AD3008.vertical movement.
AD3008
AD3008.Significant digits in the geoid height do not necessarily reflect accuracy.
AD3008.GEOID12B height accuracy estimate available here.
AD3008
AD3008.The dynamic height is computed by dividing the NAVD 88
AD3008.geopotential number by the normal gravity value computed on the
AD3008.Geodetic Reference System of 1980 (GRS 80) ellipsoid at 45
AD3008.degrees latitude (g = 980.6199 gals.).
AD3008
AD3008.The modeled gravity was interpolated from observed gravity values.
AD3008
AD3008;
AD3008;SPC FL E - North East Units Estimated Accuracy
AD3008; 295,200. 288,720. MT (+/- 180 meters Scaled)
AD3008
AD3008 SUPERSEDED SURVEY CONTROL
AD3008
AD3008 NGVD 29 (??/??/92) 3.823 (m) 12.54 (f) ADJ UNCH 1 1
AD3008
AD3008.Superseded values are not recommended for survey control.
AD3008
AD3008.NGS no longer adjusts projects to the NAD 27 or NGVD 29 datums.
AD3008.See file dsdata.txt to determine how the superseded data were derived.
AD3008
AD3008_U.S. NATIONAL GRID SPATIAL ADDRESS: 17RNK886862(NAD 83)
AD3008
AD3008_MARKER: DB = BENCH MARK DISK
AD3008_SETTING: 7 = SET IN TOP OF CONCRETE MONUMENT
AD3008_STAMPING: M 34 1933 12.516

```

## DATASHEETS

AD3008\_MARK LOGO: CGS  
 AD3008\_MAGNETIC: N = NO MAGNETIC MATERIAL  
 AD3008\_STABILITY: C = MAY HOLD, BUT OF TYPE COMMONLY SUBJECT TO  
 AD3008+STABILITY: SURFACE MOTION

AD3008

AD3008	HISTORY	- Date	Condition	Report By
AD3008	HISTORY	- 1933	MONUMENTED	CGS
AD3008	HISTORY	- 1965	GOOD	CGS
AD3008	HISTORY	- 1972	GOOD	NGS
AD3008	HISTORY	- 1980	GOOD	FLDNR
AD3008	HISTORY	- 20010426	GOOD	GCYI

AD3008

AD3008 STATION DESCRIPTION

AD3008

AD3008'DESCRIBED BY COAST AND GEODETIC SURVEY 1965

AD3008'4.3 MI N FROM JUPITER.

AD3008'ABOUT 4.3 MILES NORTH ALONG THE FLORIDA EAST COAST RAILWAY FROM

AD3008'THE FREIGHT STATION AT JUPITER, IN SECTION 13, R 42 E, T 40 S,

AD3008'0.35 MILE SOUTH OF A ROAD CROSSING, 64 FEET NORTHEAST OF AND

AD3008'ACROSS THE TRACK FROM MILEPOST 279, 37.9 FEET NORTHEAST OF THE

AD3008'NORTHEAST RAIL, 75 FEET SOUTHWEST OF THE CENTER LINE OF A BLACK

AD3008'TOP ROAD, 50 YARDS SOUTHEAST OF A SMALL POND, 1.3 FEET SOUTHEAST

AD3008'OF A METAL WITNESS POST, 1 FOOT BELOW THE LEVEL OF THE TRACK

AD3008'AND SET IN THE TOP OF A CONCRETE POST PROJECTING 2 INCHES

AD3008'ABOVE THE LEVEL OF THE GROUND. NOTE-- THE MARK IS 65.5 FEET

AD3008'NORTHEAST OF AND ACROSS THE TRACK FROM MILEPOST 279, INSTEAD

AD3008'OF 64 FEET. ALSO, THERE IS A DIM TRAIL 13 FEET SOUTH OF THE

AD3008'MARK BUT IT DOES NOT CROSS THE RAILROAD.

AD3008

AD3008 STATION RECOVERY (1972)

AD3008

AD3008'RECOVERY NOTE BY NATIONAL GEODETIC SURVEY 1972

AD3008'RECOVERED IN GOOD CONDITION.

AD3008

AD3008 STATION RECOVERY (1980)

AD3008

AD3008'RECOVERY NOTE BY FL DEPT OF NAT RES 1980

AD3008'RECOVERED IN GOOD CONDITION.

AD3008

AD3008 STATION RECOVERY (2001)

AD3008

AD3008'RECOVERY NOTE BY G.C.Y., INCORPORATED 2001

AD3008'RECOVERED AS DESCRIBED.

\*\*\* retrieval complete.

Elapsed Time = 00:00:02











FLA. WATER MANAGEMENT DIST.  
SURVEY  
JUL 2  
MARKER  
DS 190





SFWMD







STN JDSP MW3  
ELEV. 8.01  
DATE 10 8 15  
BY EE AR  
NAVD 88  
OFFSET +1.50 NGVD



WATER MANAGEMENT  
SURVEY  
J 15  
MARKER





FLA. WATER MANAGEMENT DIST.  
SURVEY  
B.M.  
J.D. - 3  
OS MARKER  
993



WATER MANAGEMENT DISTRICT  
SURVEY  
BM  
DSPMW 3  
2010  
MARKER.



