



# RMBAKER

Geology and Geophysics

8600 Oldbridge Lane  
Orlando, FL 32819  
mobile ph 407-733-8958

**rob@rmbaker.com**  
**www.rmbaker.com**

**WELL L-1968**  
**UWI L-1968**

**PROFESSIONAL LICENSES**  
Geologist PG2186  
Licensed Geology Business

HEADER NOTES:

COMP SFWMD  
LOC GUNNERY ROAD N & CENTENNIAL BLVD  
FLD LOWER WEST COAST  
CNTY LEE  
STAT FL  
PROV FL  
CTRY USA

LATI	X
LONG	Y
GDAT	WGS84
SEC	ELEV
TWP	V DAT
RGE	

ALL SERVICES:  
DUAL INDUCTION  
NATURAL GAMMA  
CALIPER

PERMANENT DATUM:  
LOG MEASURED FROM: GROUND SURFACE-2.08 FT BELOW TOC

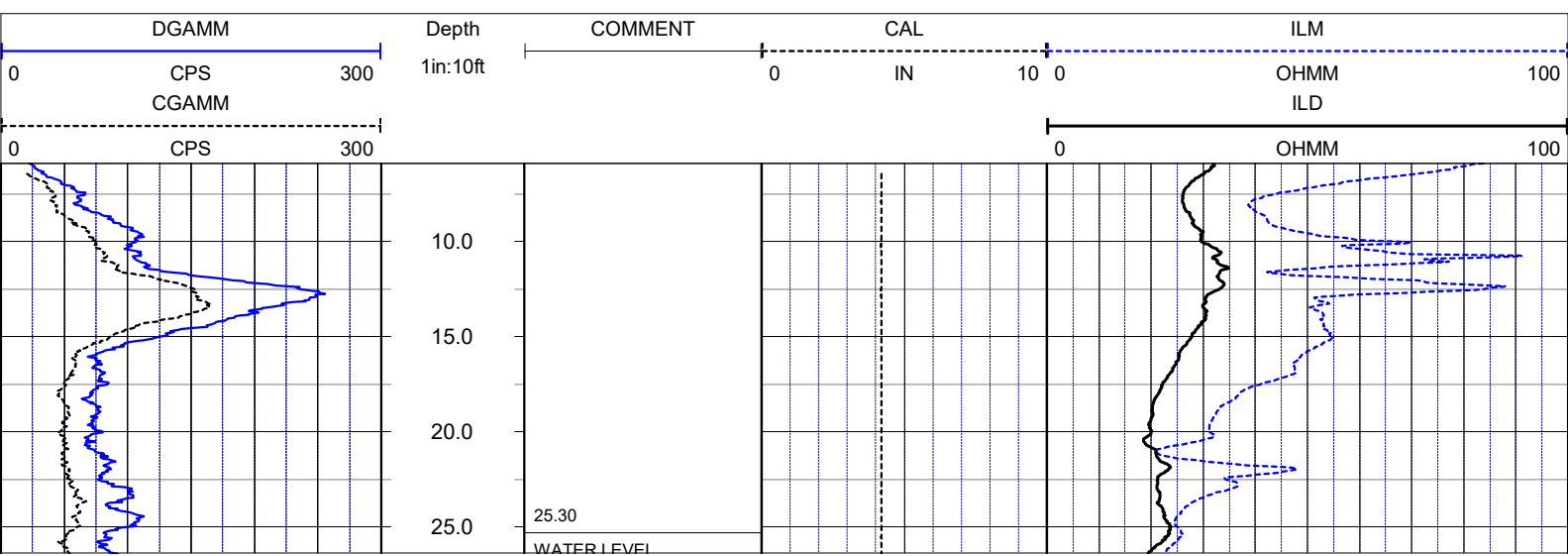
DRILLING MEASURED FROM:

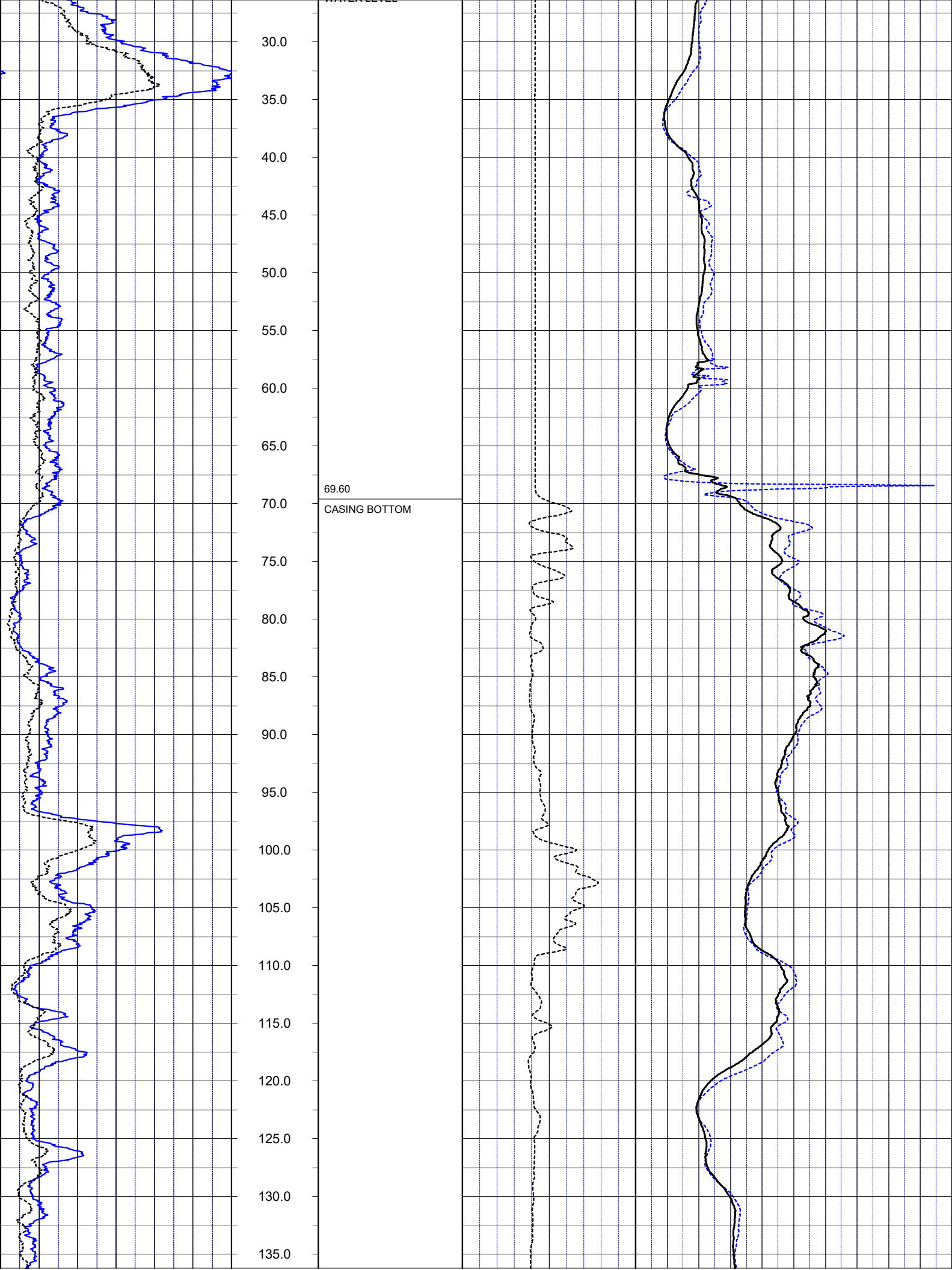
DATE	03 Mar 21	TYPE FLUID IN HOLE	WATER
RUN No	1	LOGGING SPEED (FT/MIN)	25
TYPE LOG	DUIN+CALIPER	TROLLING DIRECTION	UP
DEPTH-DRILLER	165	PUMPING RATE (GPM)	N/A
DEPTH-LOGGER	150.2		
DRILLER	N/A		
RECORDED BY	RMB		
SRVC	RMBAKER LLC	API	N/A
WITNESSED BY	SFWMD	LIC	N/A

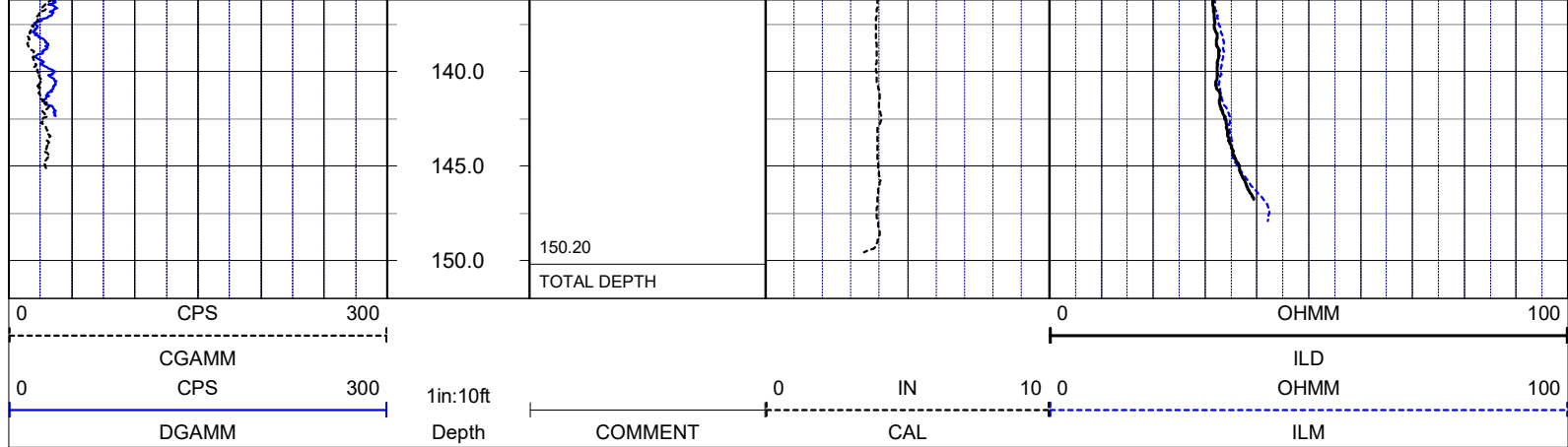
BOREHOLE RECORD		CASING RECORD					
RUN NO.	BIT FROM	TO	SIZE	MAT.	FROM	TO	
1	4	69.6	150.2	4	PVC	0	69.6

## LOG CODES

3-arm caliper	<b>CAL</b>	long normal resistivity	<b>RLN</b>	deep induction conductivity	<b>IDC</b>
natural gamma (CPS)	<b>GAMM</b>	8 inch resistivity	<b>R8</b>	shallow induction conductivity	<b>ISC</b>
spontaneous potential	<b>ESP</b>	32 inch resistivity	<b>R32</b>	sonic interval velocity	<b>DT</b>
single point resistance	<b>RES</b>	deep induction resistivity	<b>ILD</b>	sonic porosity (RHG method)	<b>SPHI</b>
short normal resistivity	<b>RSN</b>	shallow induction resistivity	<b>ILM</b>	repeat designation	<b>R</b>







**NOTES:**  
 While due care has been exercised in the performance of these measurements and observations, in accordance with methodologies utilized by the general practitioner, RMLBAKER LLC can make no representations, warranties, or guarantees with respect to latent or concealed conditions that may exist, which may be beyond the detection capabilities of the methodologies used, or that may extend beyond the areas and depths surveyed.  
 The geophysical well logs show subsurface conditions as they existed at the dates and locations shown, and it is not warranted that they are representative of subsurface conditions at other locations and times. If, at any time, different subsurface conditions from those observed are determined to be present, we must be advised and allowed to review and revise our observations if necessary.

Florida Geology Business Licenced by PG2186

**END OF LOG**