



# RMBAKER LLC

WELL L-56668R  
UWI L-56668R

Geology and Geophysics

8600 Oldbridge Lane  
Orlando, FL 32819  
mobile ph 407-733-8958

LOG STAGE EXPLORATORY

rob@rmbaker.com  
www.rmbaker.com

HEADER NOTES:  
STEEL CENTRALIZER IMPACT ON INDUCTION CURVES

COMP RMBAKER LLC  
LOC LEE COUNTY  
FLD LOWER WEST COAST  
CNTY LEE  
STAT FL  
PROV FL  
CTRY USA

LATI 26.420245 X  
LONG -81.789008 Y  
GDAT WGS84 HDAT  
SEC ELEV  
TWP V DAT  
RGE

ALL SERVICES:  
DUAL INDUCTION  
NATURAL GAMMA

PERMANENT DATUM:  
LOG MEASURED FROM: GROUND SURFACE

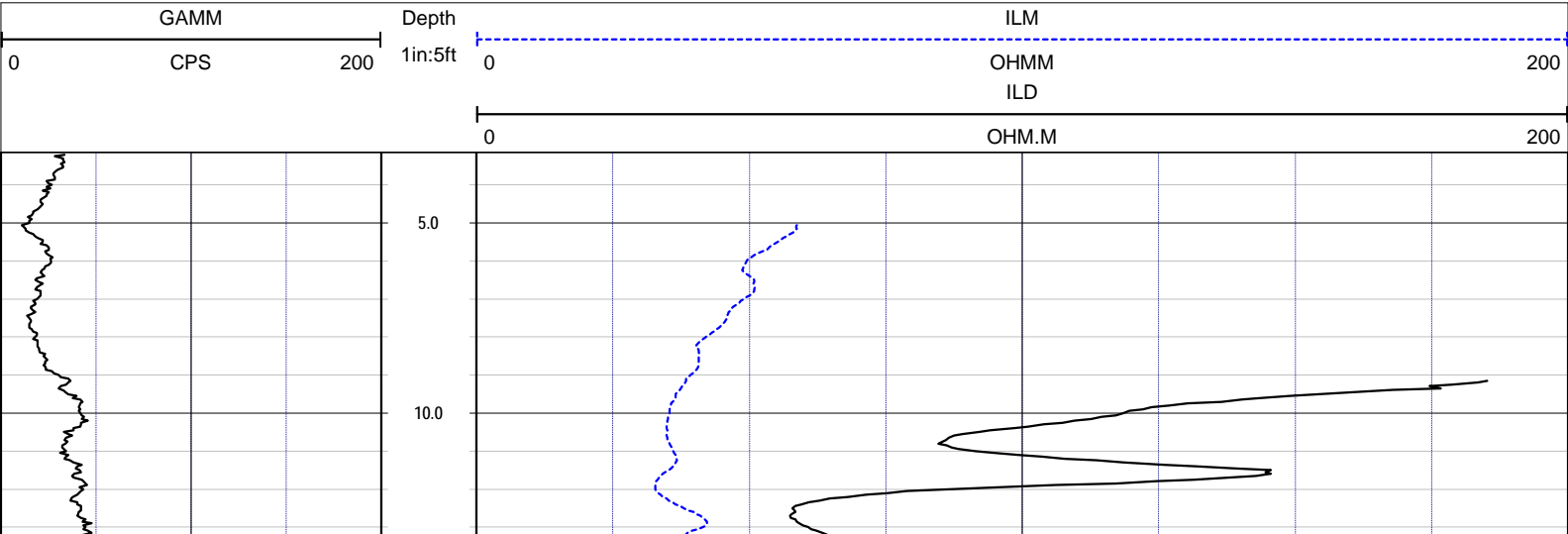
DRILLING MEASURED FROM:

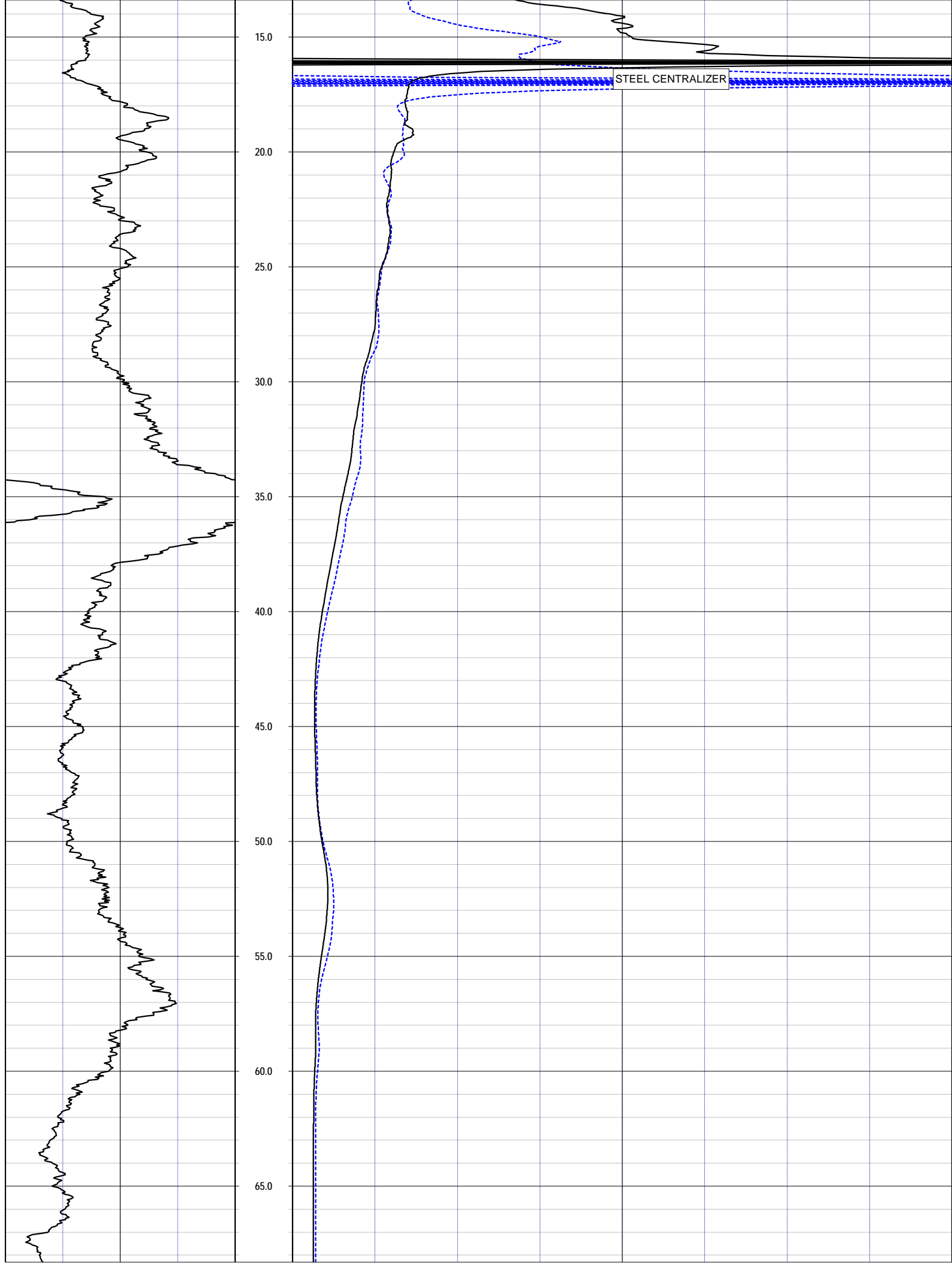
DATE	28 Jul 15	TYPE FLUID IN HOLE	WATER
RUN No	1	LOGGING SPEED (FT/MIN)	30
TYPE LOG	DUAL INDUCTION	TROLLING DIRECTION	UP
DEPTH-DRILLER		PUMPING RATE (GPM)	N/A
DEPTH-LOGGER	157.15		
DRILLER			
RECORDED BY	RMB		
SRVC	RMBAKER LLC	API	N/A
WITNESSED BY	E. GEDDES	LIC	N/A

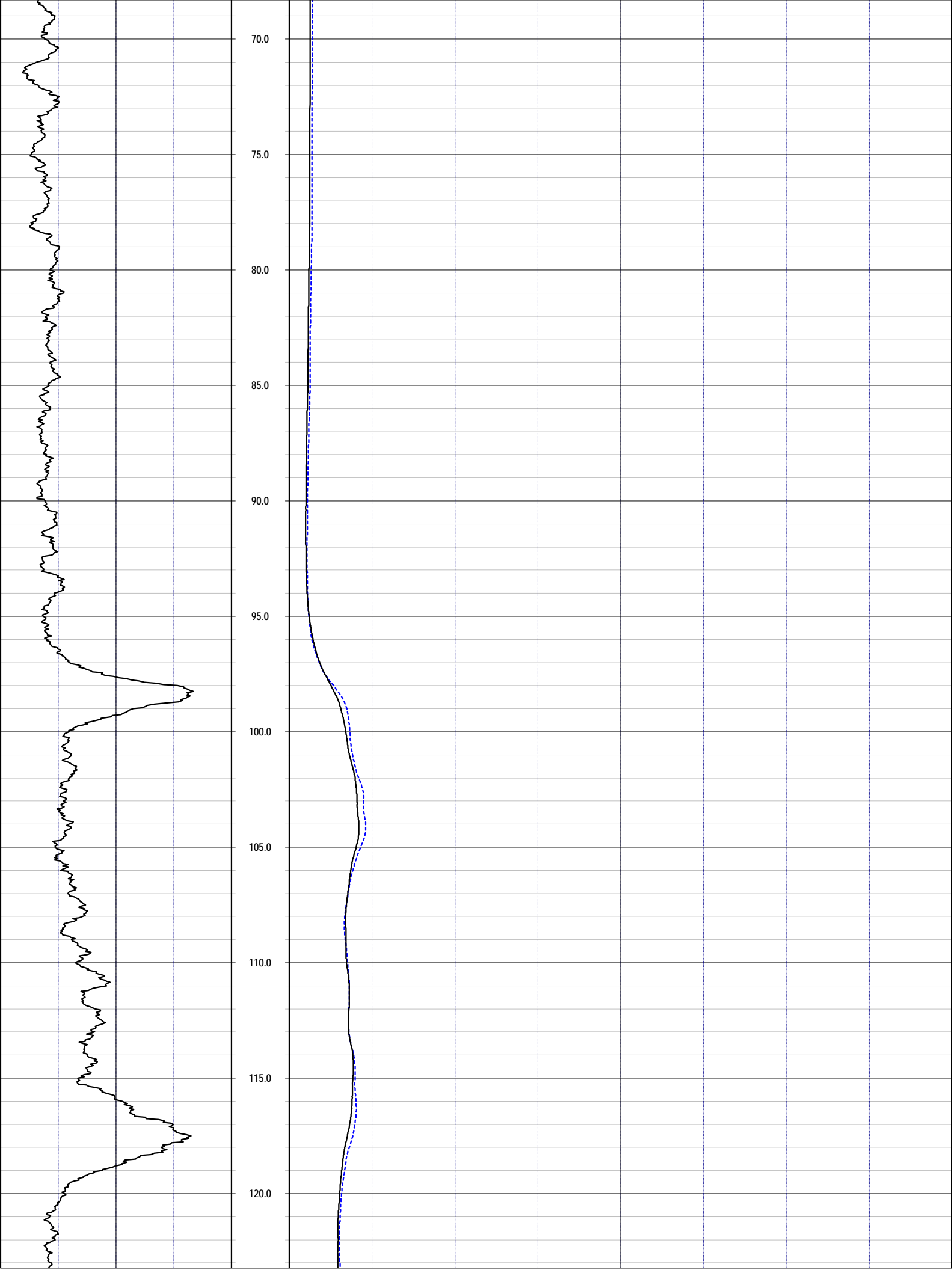
BOREHOLE RECORD		CASING RECORD				
RUN NO.	BIT FROM	TO	SIZE	MAT.	FROM	TO
1			4	PVC	0	157.15

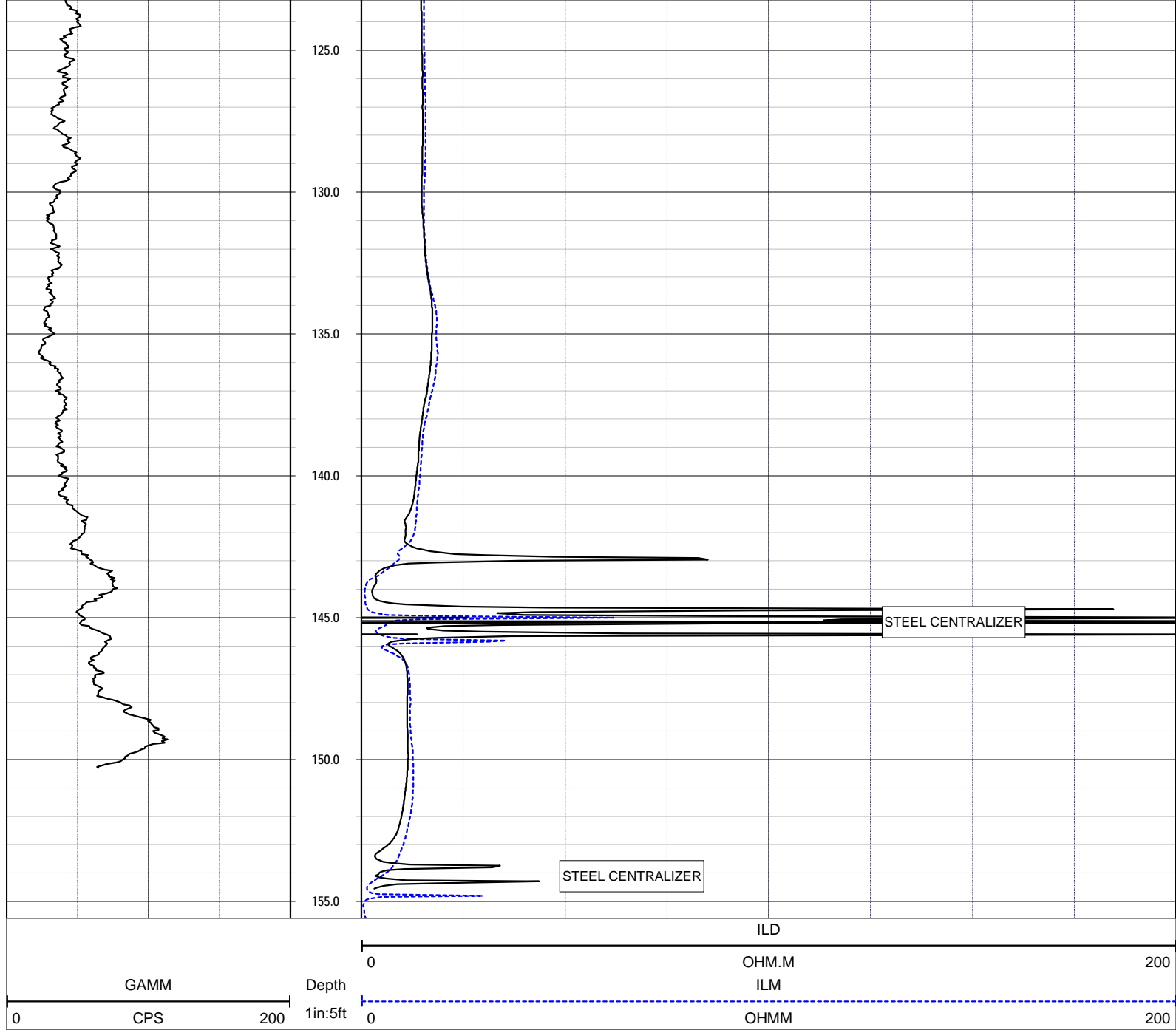
## LOG CODES

3-arm caliper	CAL	long normal resistivity	RLN	deep induction conductivity	IDC
natural gamma (CPS)	GAMM	8 inch resistivity	R8	shallow induction conductivity	ISC
spontaneous potential	ESP	32 inch resistivity	R32	sonic interval velocity	DT
single point resistance	RES	deep induction resistivity	ILD	sonic porosity (RHG method)	SPHI
short normal resistivity	RSN	shallow induction resistivity	ILM	repeat designation	R









**NOTES:**

While due care has been exercised in the performance of these measurements and observations, in accordance with methodologies utilized by the general practitioner, RIMBAKER LLC can make no representations, warranties, or guarantees with respect to latent or concealed conditions that may exist, which may be beyond the detection capabilities of the methodologies used, or that may extend beyond the areas and depths surveyed. The geophysical well logs show subsurface conditions as they existed at the dates and locations shown, and it is not warranted that they are representative of subsurface conditions at other locations and times. If, at any time, different subsurface conditions from those observed are determined to be present, we must be advised and allowed to review and revise our observations if necessary.

Certificate of Authorization GB 458

END OF LOG