

COMPLETION REPORT FOR  
LEE COUNTY REGIONAL WATER SUPPLY AUTHORITY  
ASR TEST WELL #LM-3982,  
EAST LEE COUNTY, FLORIDA

Prepared for:

Lee County Regional Water Supply Authority  
1617 Hendry Street  
Fort Myers, Florida 33901

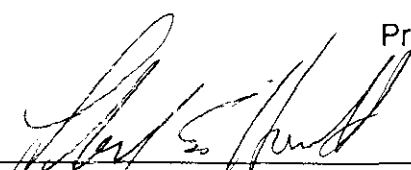
November, 1994

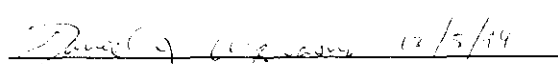
ViroGroup, Inc.  
428 Pine Island Road, S.W.  
Cape Coral, Florida 33991

and

Camp, Dresser, and McKee, Inc.  
8191 College Parkway, Suite 206  
Fort Myers, Florida 33919

Project Number 01-02303.00

  
\_\_\_\_\_  
Lloyd E. Horvath, P.E., Vice President  
Licensed Professional Engineer #25260

  
\_\_\_\_\_  
Daniel J. Acquaviva, P.G., Senior Hydrogeologist  
Licensed Professional Geologist #1066

**CORKSCREW ASR  
EXPANSION PROJECT  
WELL COMPLETION REPORT**

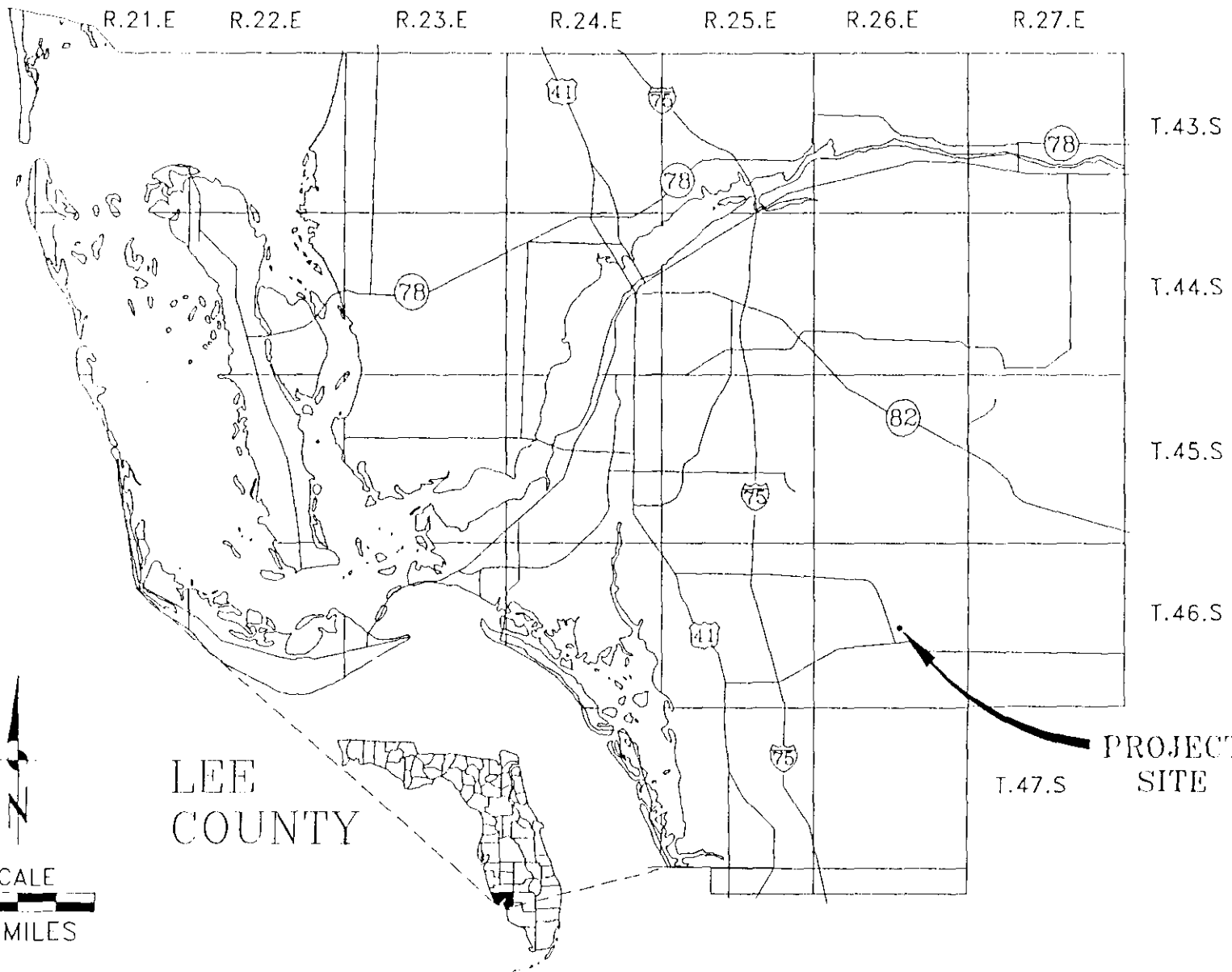
**Prepared for:**

**Lee County Utilities  
P.O. Box 398  
Fort Myers, Florida 33902**

**September 1999**

**Prepared By:**

**Water Resource Solutions, Inc.  
428 Pine Island Road, S.W.  
Cape Coral, Florida 33991**



LEE  
COUNTY

PROJECT  
SITE

**ViroGroup**

*AIR • WATER • SOIL TECHNOLOGY*

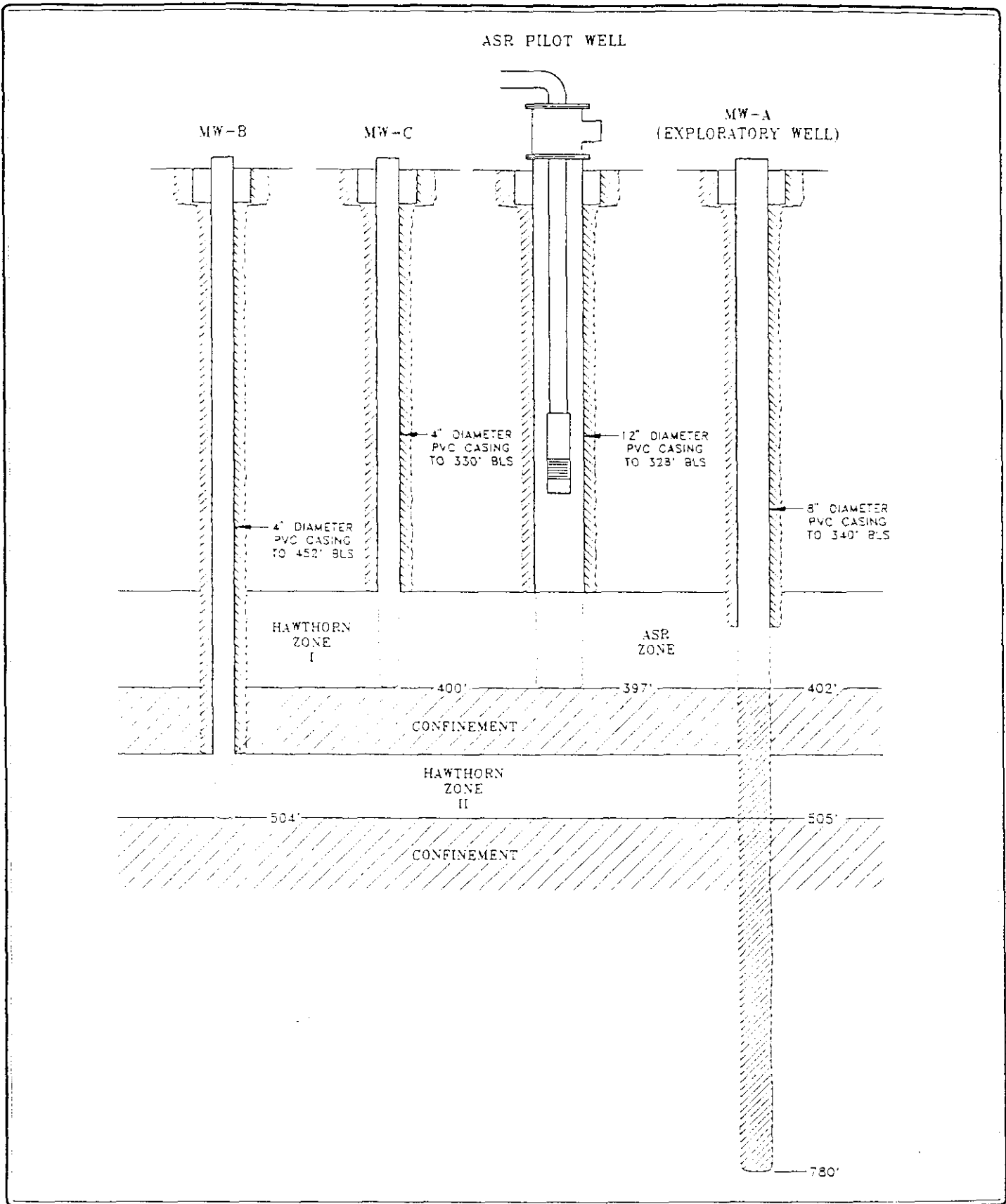
DRN. BY: CAM DWG NO. A-012303FA-1 DATE: 9/16/94

PROJECT NAME: LCRWSA - ASR

PROJECT NUMBER: 01-02303.00

FLORIDA  
DIVISION

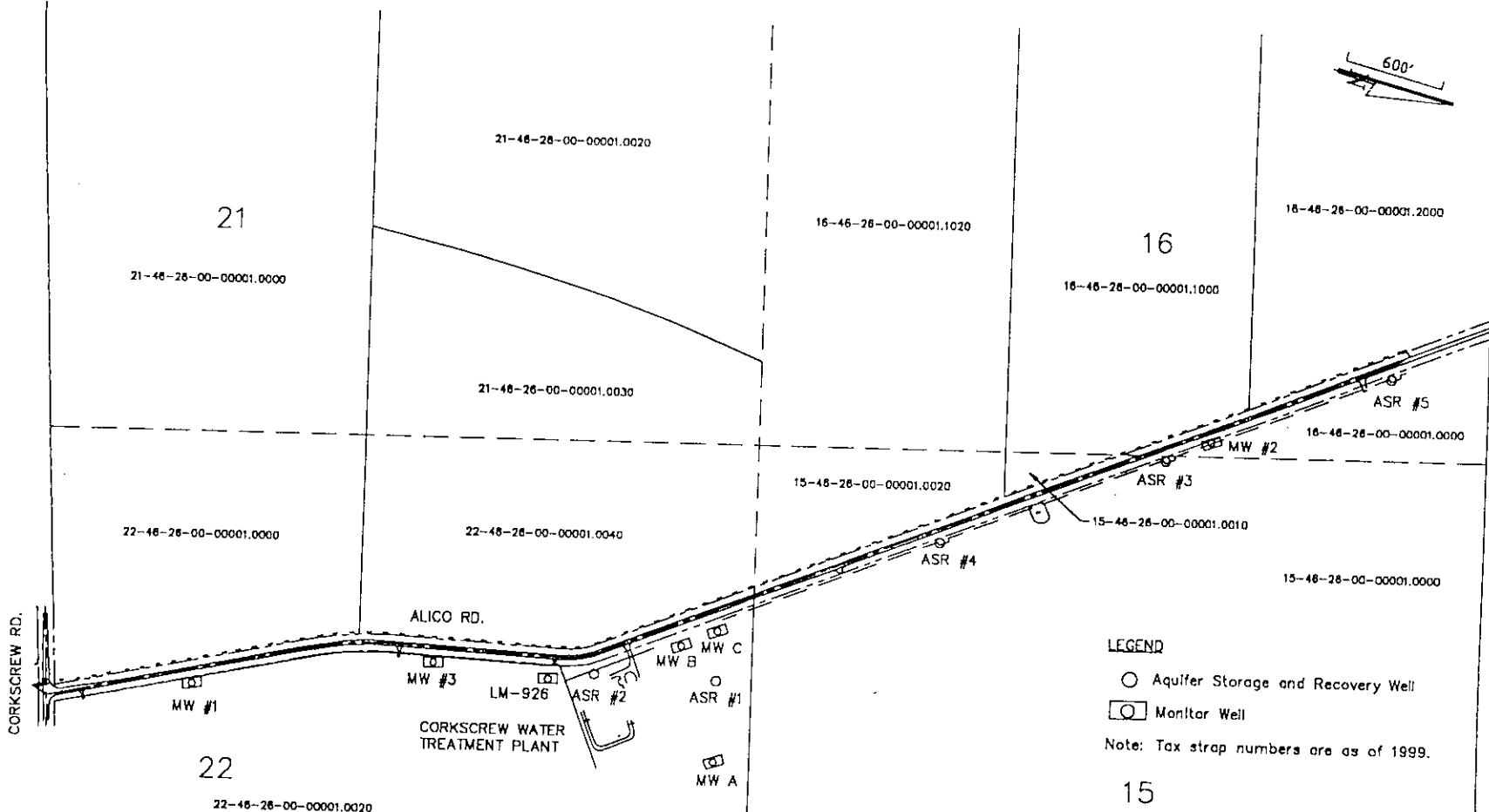
FIGURE 1-1. MAP SHOWING PROJECT SITE LOCATION.



<b>ViroGroup</b>	<i>AIR • WATER • SOIL TECHNOLOGY</i>		
	DRN BY: CAM	DWG. NO. A-012303NH-1	DATE: 12/2/96
	PROJECT NAME: CORKSCREW		NUMBER: 01-02303.00

FIGURE 1. PILOT ASR AND MONITOR WELL CONSTRUCTION SCHEMATIC.

COPIED from FDEP file



**LEGEND**

- Aquifer Storage and Recovery Well
- Monitor Well

Note: Tax strap numbers are as of 1999.

15

**COORDINATE DATA**

**FDEP PERMIT NO.**

ASR	Northing	Easting	FDEP PERMIT NO.
#1	10746.50214	6662.85107	UC 36-264777
#2	9999.53039	6541.37052	142222-002-UC
#3	13436.24706	5273.52264	142222-003-UC
#4	12079.18566	5800.58455	142222-004-UC
#5	14792.76633	4747.96505	142222-005-UC

*Water Resource Solutions*

PROJECT NAME: CORKSCREW  
PROJECT NUMBER: 01-04052.LC

DWG. NUMBER: A-014052F8-1  
DATE: 9/19/01

FIGURE 1-1. SITE PLAN.

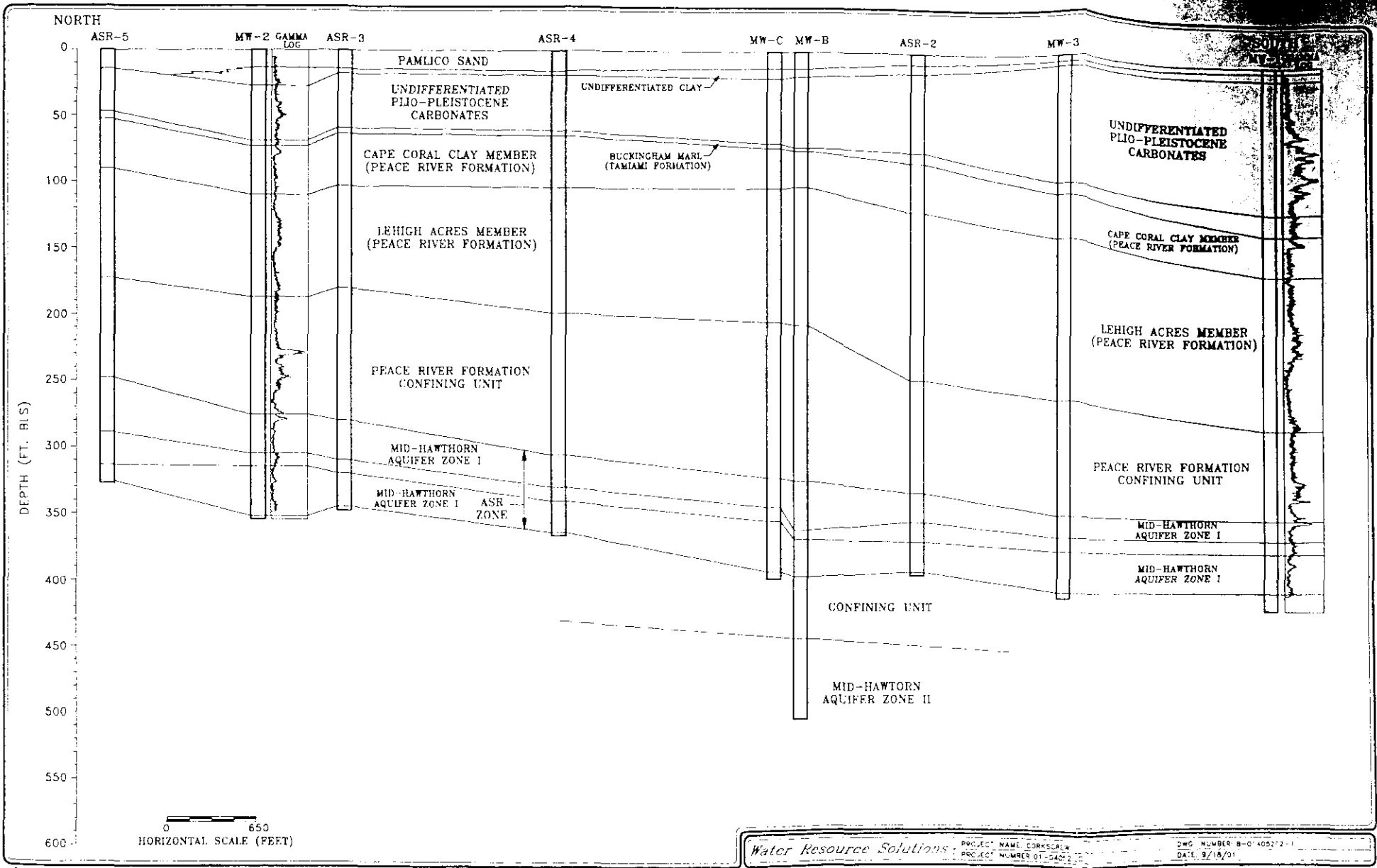


FIGURE 2-2. GEOLOGIC CROSS-SECTION, ASR WELL ALIGNMENT.

COPIED from FDEP file