

COMPLETION REPORT FOR  
LEE COUNTY REGIONAL WATER SUPPLY AUTHORITY  
ASR TEST WELL #LM-3982,  
EAST LEE COUNTY, FLORIDA

Prepared for:

Lee County Regional Water Supply Authority  
1617 Hendry Street  
Fort Myers, Florida 33901

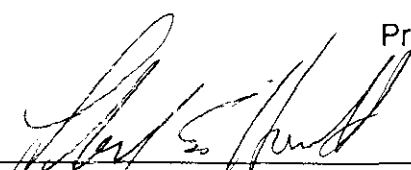
November, 1994

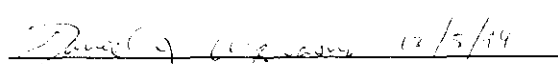
ViroGroup, Inc.  
428 Pine Island Road, S.W.  
Cape Coral, Florida 33991

and

Camp, Dresser, and McKee, Inc.  
8191 College Parkway, Suite 206  
Fort Myers, Florida 33919

Project Number 01-02303.00

  
Lloyd E. Horvath, P.E., Vice President  
Licensed Professional Engineer #25260

  
Daniel J. Acquaviva, P.G., Senior Hydrogeologist  
Licensed Professional Geologist #1066

**CORKSCREW ASR  
EXPANSION PROJECT  
WELL COMPLETION REPORT**

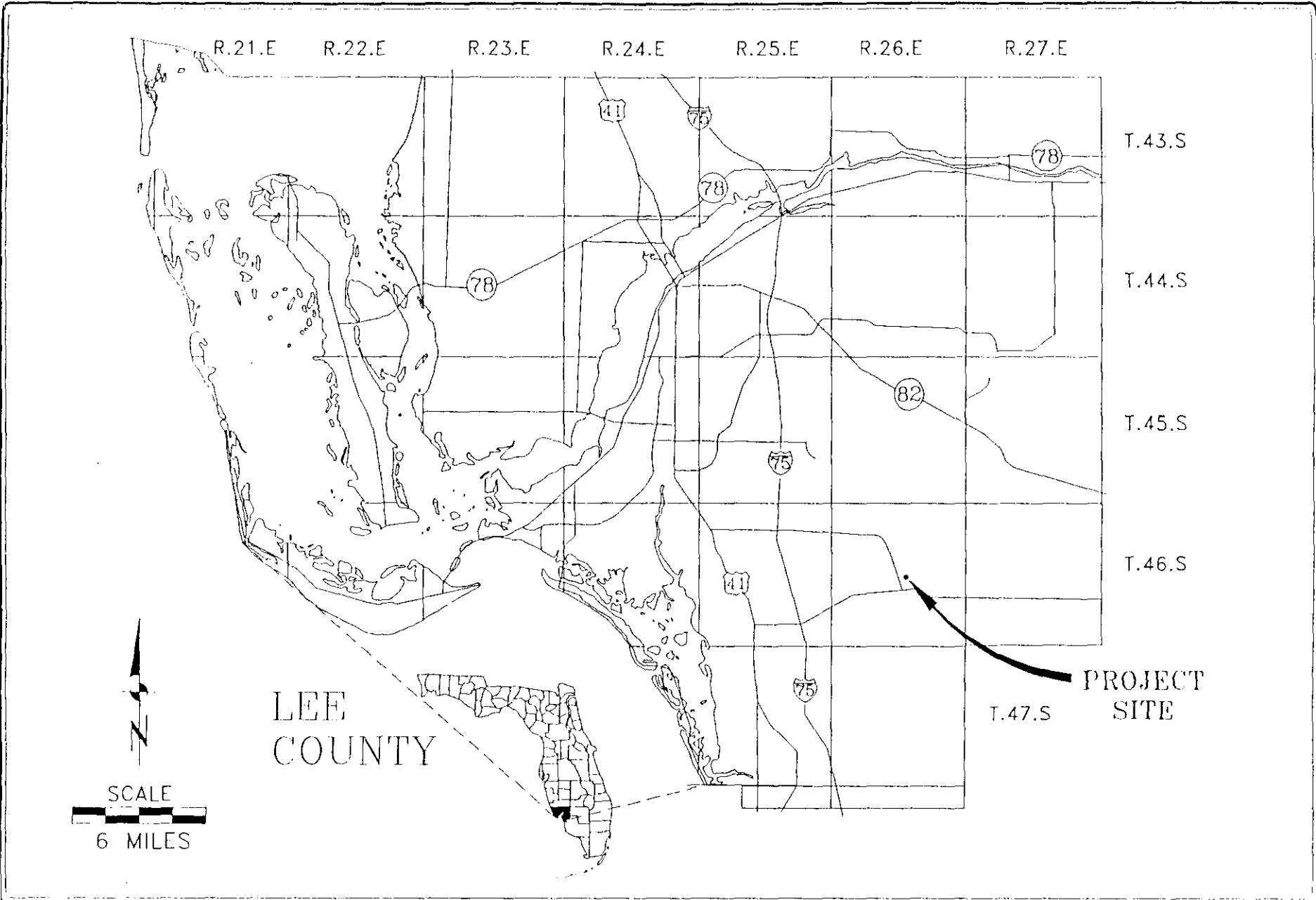
**Prepared for:**

**Lee County Utilities  
P.O. Box 398  
Fort Myers, Florida 33902**

**September 1999**

**Prepared By:**

**Water Resource Solutions, Inc.  
428 Pine Island Road, S.W.  
Cape Coral, Florida 33991**



**ViroGroup**

*AIR • WATER • SOIL TECHNOLOGY*

DRN. BY: CAM DWG NO. A-012303FA-1 DATE: 9/16/94

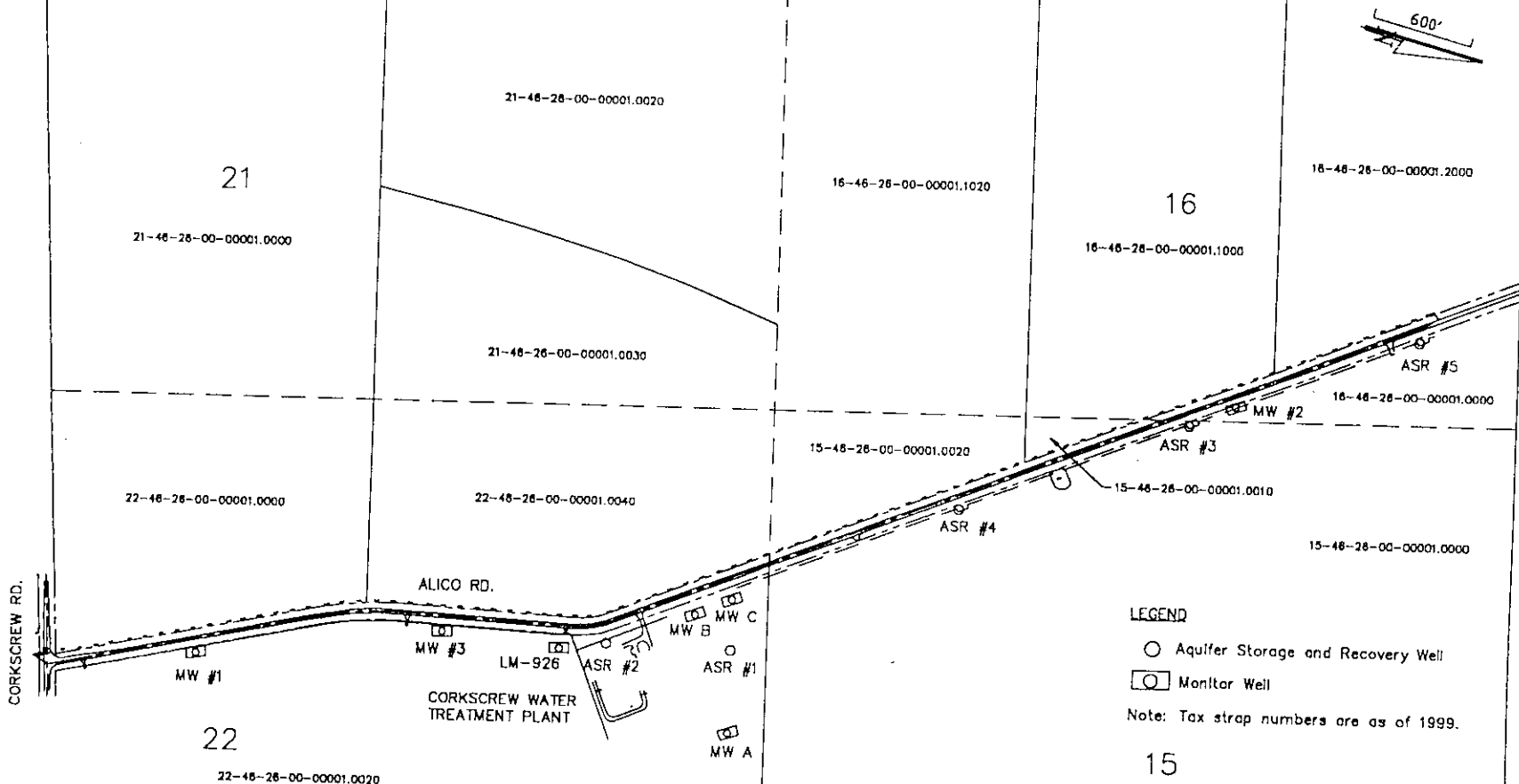
PROJECT NAME: LCRWSA - ASR

PROJECT NUMBER: 01-02303.00

FLORIDA  
DIVISION

FIGURE 1-1. MAP SHOWING PROJECT SITE LOCATION.

COPIED from FDEP file



LEGEND

- Aquifer Storage and Recovery Well
- Monitor Well

Note: Tax strap numbers are as of 1999.

15

COORDINATE DATA

FDEP PERMIT NO.

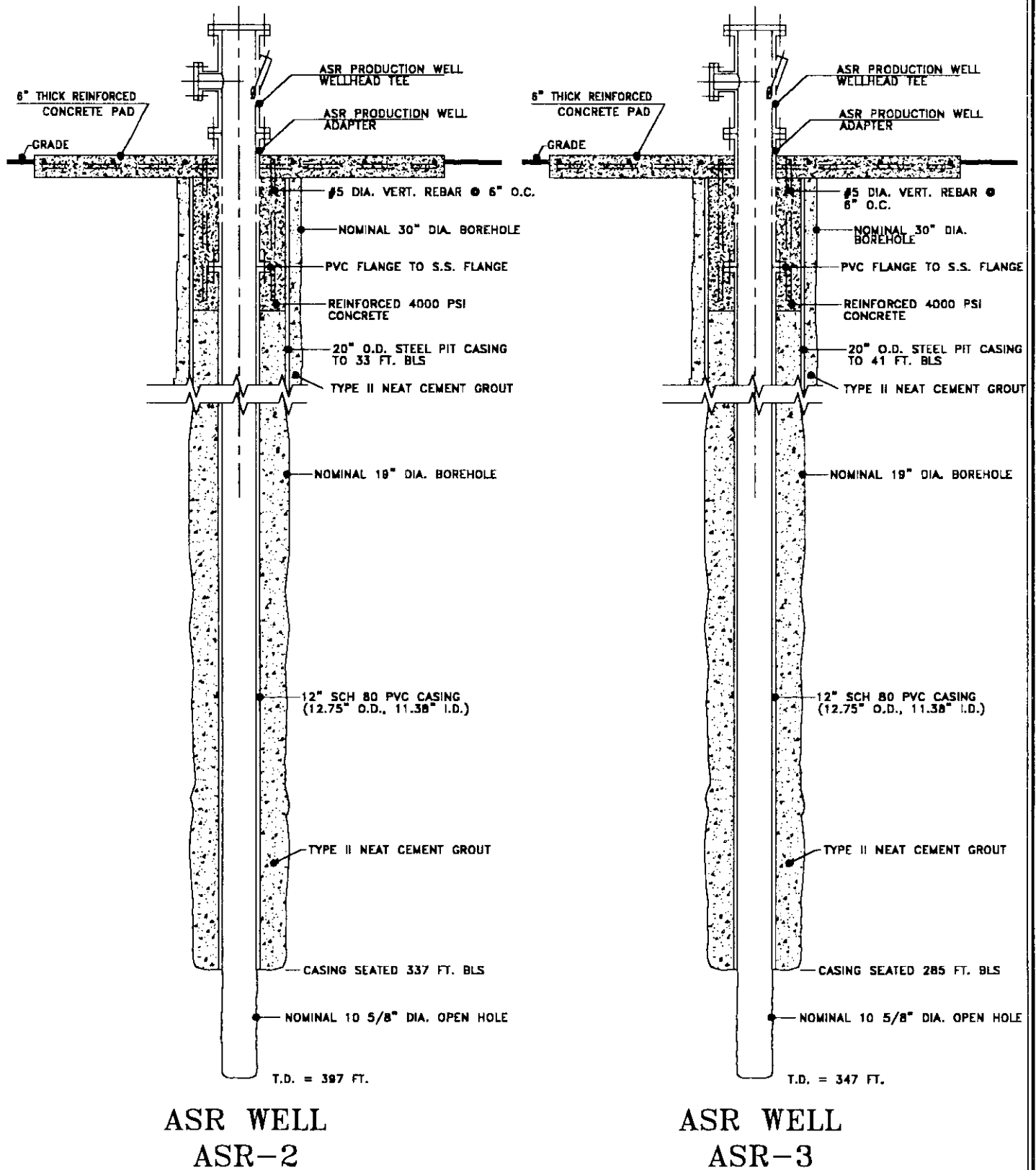
| ASR | Northing    | Easting    | FDEP PERMIT NO. |
|-----|-------------|------------|-----------------|
| #1  | 10746.50214 | 6662.85107 | UC 36-264777    |
| #2  | 9999.53039  | 6541.37052 | 142222-002-UC   |
| #3  | 13436.24706 | 5273.52264 | 142222-003-UC   |
| #4  | 12079.18566 | 5800.58455 | 142222-004-UC   |
| #5  | 14792.76633 | 4747.96505 | 142222-005-UC   |

Water Resource Solutions

PROJECT NAME: CORKSCREW  
PROJECT NUMBER: 01-04052.LC

DWG. NUMBER: A-014052F8-1  
DATE: 9/19/01

FIGURE 1-1. SITE PLAN.



Water Resource  
Solutions

LCU CORKSCREW ASR EXPANSION

DRAWING NO.: A-013880W1-2

PROJECT NO.: 01-03880.HO

DATE: 9/15/99

PITMAN ▼ HARTENSTEIN  
& ASSOCIATES, INC.

FIGURE F-1. AS-BUILT DRAWING OF ASR WELLS ASR-2 AND ASR-3.

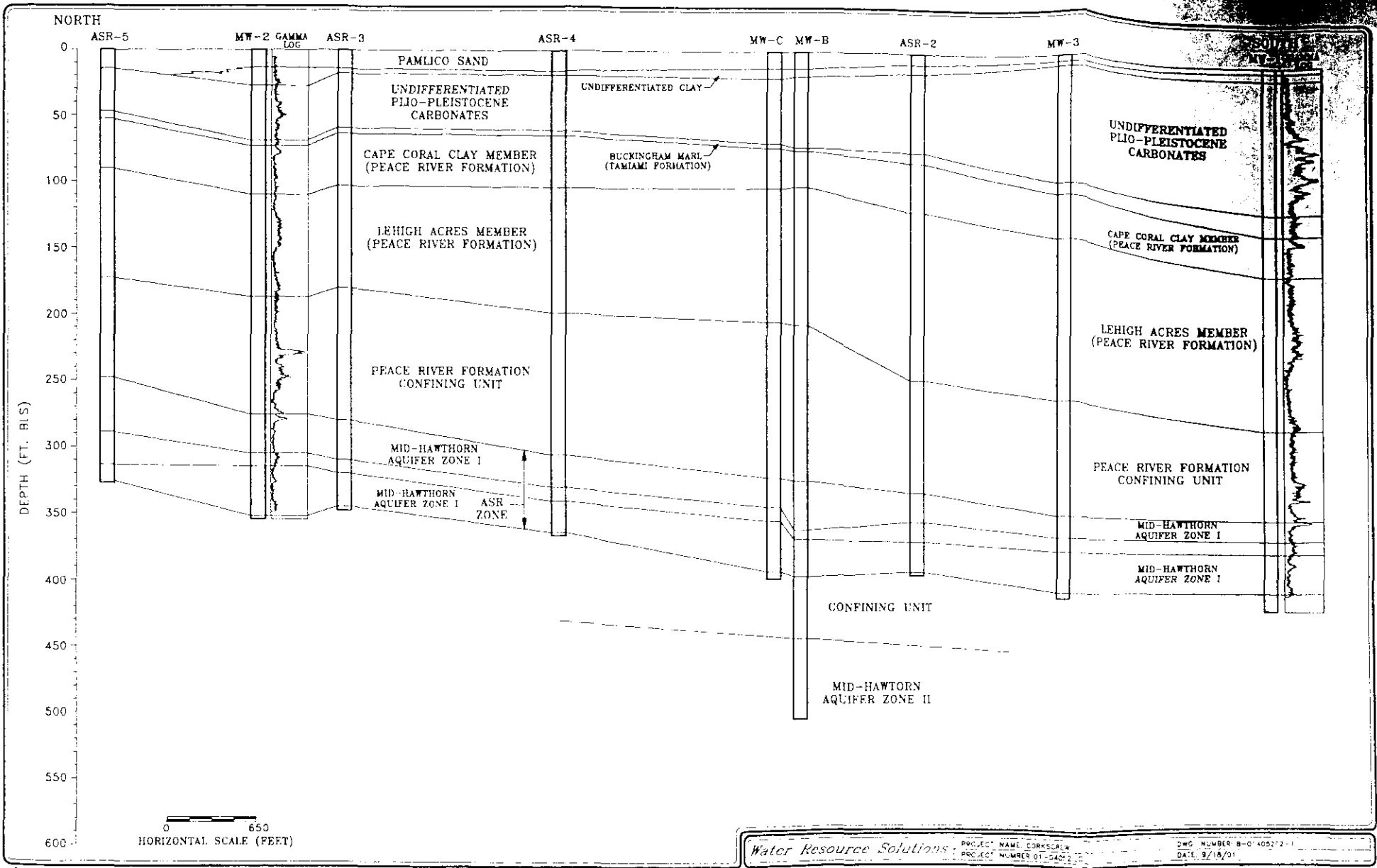


FIGURE 2-2. GEOLOGIC CROSS-SECTION, ASR WELL ALIGNMENT.

COPIED from FDEP file