



RMBAKER
Geology and Geophysics

WELL L-738
UWI L-738

8600 Oldbridge Lane
Orlando, FL 32819
mobile ph 407-733-8958

PROFESSIONAL LICENSES
Geologist PG2186
Licensed Geology Business

rob@rmbaker.com
www.rmbaker.com

HEADER NOTES:

COMP SFWMD
LOC FELTS AND CHILDERS STREET
FLD LOWER WEST COAST
CNTY LEE
STAT FL
PROV FL
CTRY USA

LATI	26.3397	X
LONG	-81.7781	Y
GDAT	WGS84	HDAT
SEC		ELEV
TWP		V DAT
RGE		

ALL SERVICES:
CALIPER
NATURAL GAMMA
DUAL INDUCTION

PERMANENT DATUM:
LOG MEASURED FROM: GROUND SURFACE - 1.5 FT BELOW TOC

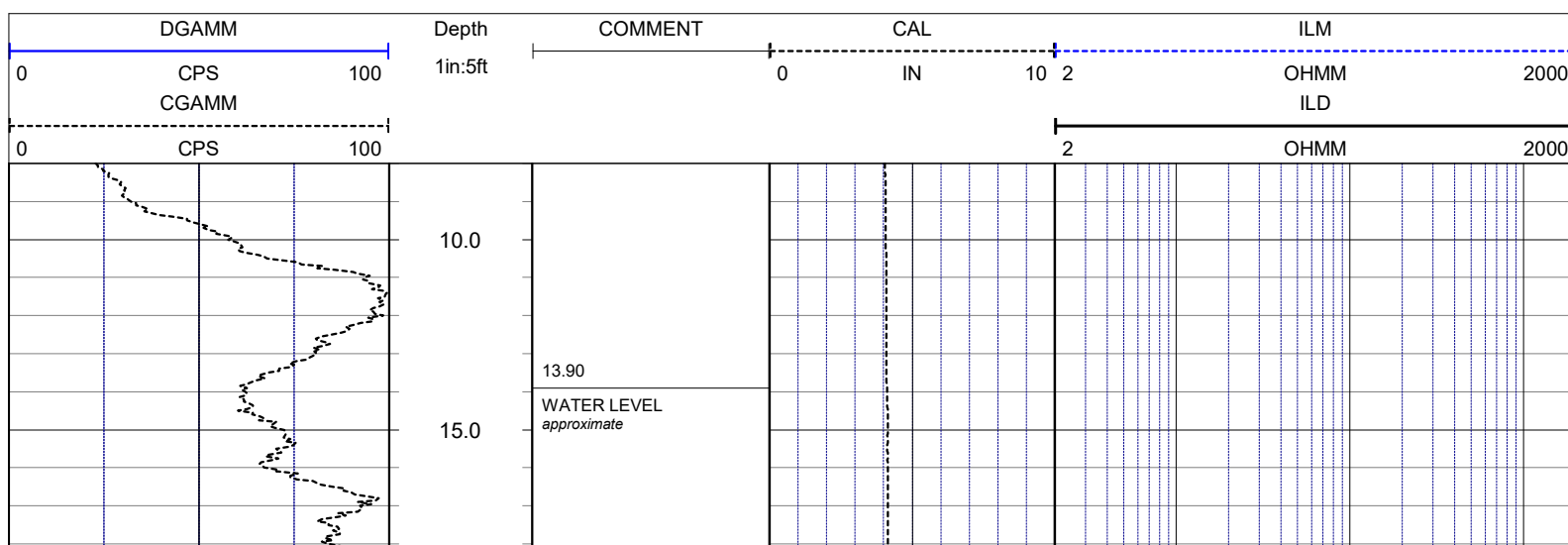
DRILLING MEASURED FROM:

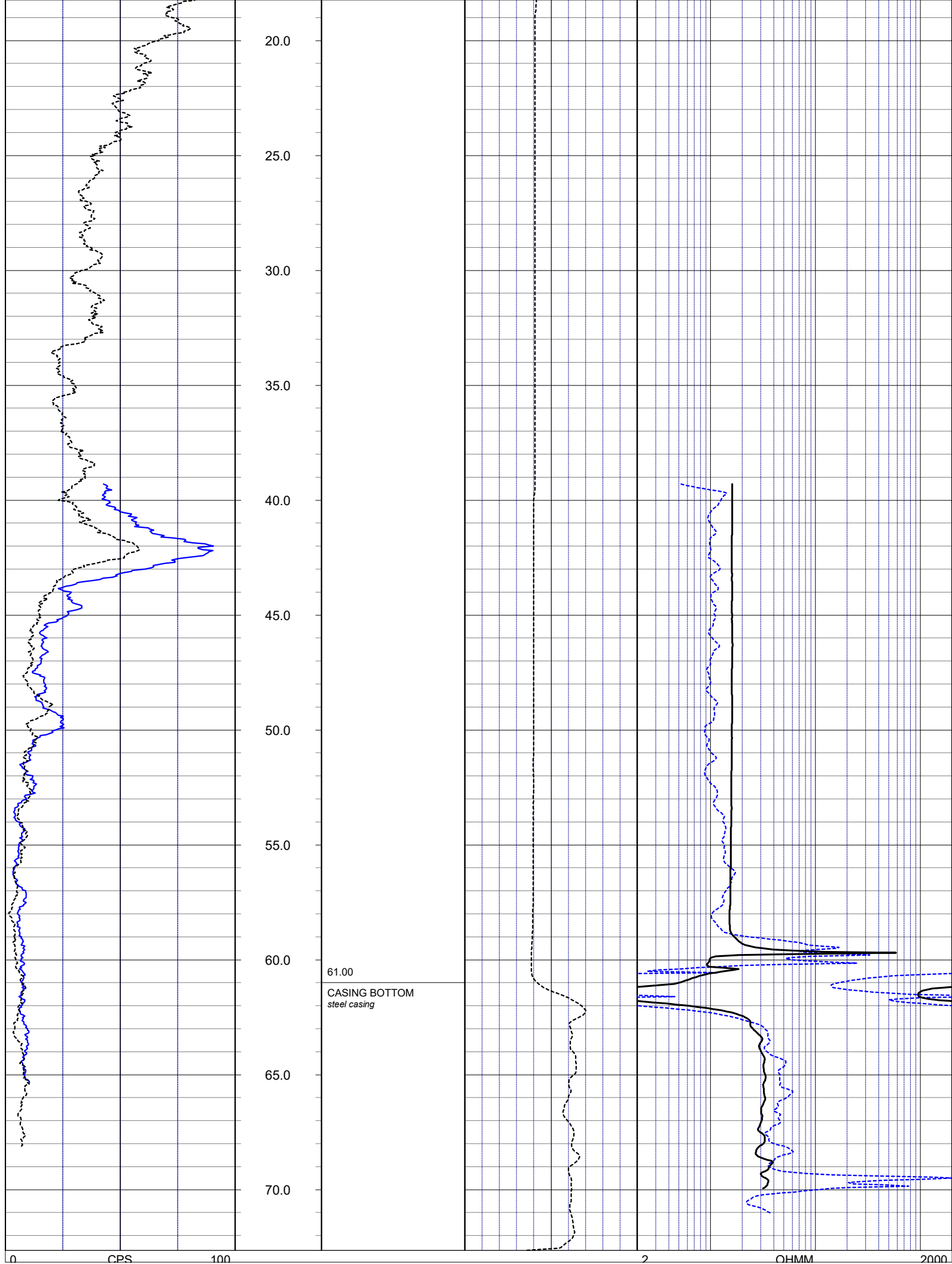
DATE	28 Apr 21	TYPE FLUID IN HOLE	WATER
RUN No	1	LOGGING SPEED (FT/MIN)	25
TYPE LOG	COMPOSITE	TROLLING DIRECTION	UP
DEPTH-DRILLER	75	PUMPING RATE (GPM)	N/A
DEPTH-LOGGER	73.2		
DRILLER	N/A		
RECORDED BY	RMB		
SRVC	RMBAKER LLC	API	N/A
WITNESSED BY	SFWMD	LIC	N/A

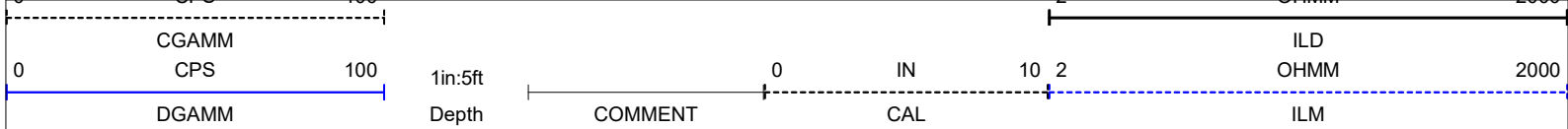
BOREHOLE RECORD		CASING RECORD					
RUN NO.	BIT	FROM	TO	SIZE	MAT.	FROM	TO
1	3.875	50	73.2	4	STEEL	0	50

LOG CODES

3-arm caliper	CAL	long normal resistivity	RLN	deep induction conductivity	IDC
natural gamma (CPS)	GAMM	8 inch resistivity	R8	shallow induction conductivity	ISC
spontaneous potential	ESP	32 inch resistivity	R32	sonic interval velocity	DT
single point resistance	RES	deep induction resistivity	ILD	sonic porosity (RHG method)	SPHI
short normal resistivity	RSN	shallow induction resistivity	ILM	repeat designation	R







NOTES:

While due care has been exercised in the performance of these measurements and observations, in accordance with methodologies utilized by the general practitioner, RMLBAKER LLC can make no representations, warranties, or guarantees with respect to latent or concealed conditions that may exist, which may be beyond the detection capabilities of the methodologies used, or that may extend beyond the areas and depths surveyed.

The geophysical well logs show subsurface conditions as they existed at the dates and locations shown, and it is not warranted that they are representative of subsurface conditions at other locations and times. If, at any time, different subsurface conditions from those observed are determined to be present, we must be advised and allowed to review and revise our observations if necessary.

Florida Geology Business Licenced by PG2186

END OF LOG