



SURVEY REPORT

L-31 LEVEE ROAD WELLS Miami-Dade County, FL

Cardno

5670 Zip Drive
Fort Myers, FL 33905
USA

Phone: +1 239 277 0722
Fax: +1 239 277 7179

www.cardno.com

PROJECT NUMBER: E2150-428.00

REPORT DATE: October 20, 2015

REVISED DATE:

SUBMITTAL: Final

PREPARED FOR: Cardno, Inc.
Natural Resources & Health Sciences
Division

PROJECT MANAGER: Scott Urquhart, PSM

PROJECT MANAGER: David Hire, Project Scientist / Staff
Hydrologist

TABLE OF CONTENTS

Certification	3
Abbreviations	4
Purpose of Survey	5
Scope of Work	6
Methodology	6
Accuracy	6
Project Personnel	6
Appendix A	Well Pictures
Appendix B	Well Value Spreadsheet
Appendix C	Benchmark Information

SURVEY REPORT

**According to the:
STATE OF FLORIDA
STANDARDS OF PRACTICE
CHAPTER 472.027 Florida Statutes
Chapter 5J-17, Florida Administrative Code**

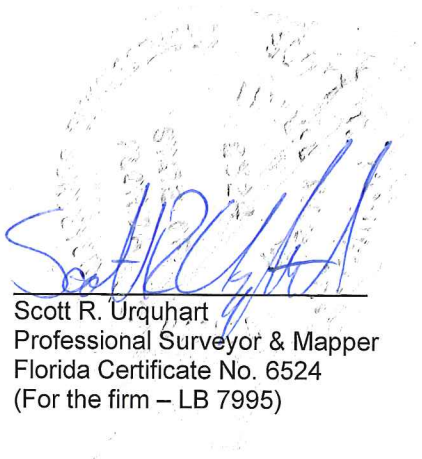
This report and copies thereof are not valid without the signature and original raised seal of a Florida Licensed Surveyor and Mapper. This report is not valid without the attached compact disc referenced in this report.

Additions or deletions to the report by other than the signing party are prohibited without written consent of the signing party.

Date of last fieldwork: October 15, 2015 as recorded in Field Book 425, Pages 43-49.

All field work was performed by:

Cardno, Inc., LB00007975
5670 Zip Drive
Fort Myers, Florida 33905
Phone: (239) 277-0722 Fax: (239) 277-7179
Scott Urquhart, PSM 6524 (Surveyor and Mapper in Responsible Charge)



Scott R. Urquhart
Professional Surveyor & Mapper
Florida Certificate No. 6524
(For the firm – LB 7995)

10/26/15
Date Signed

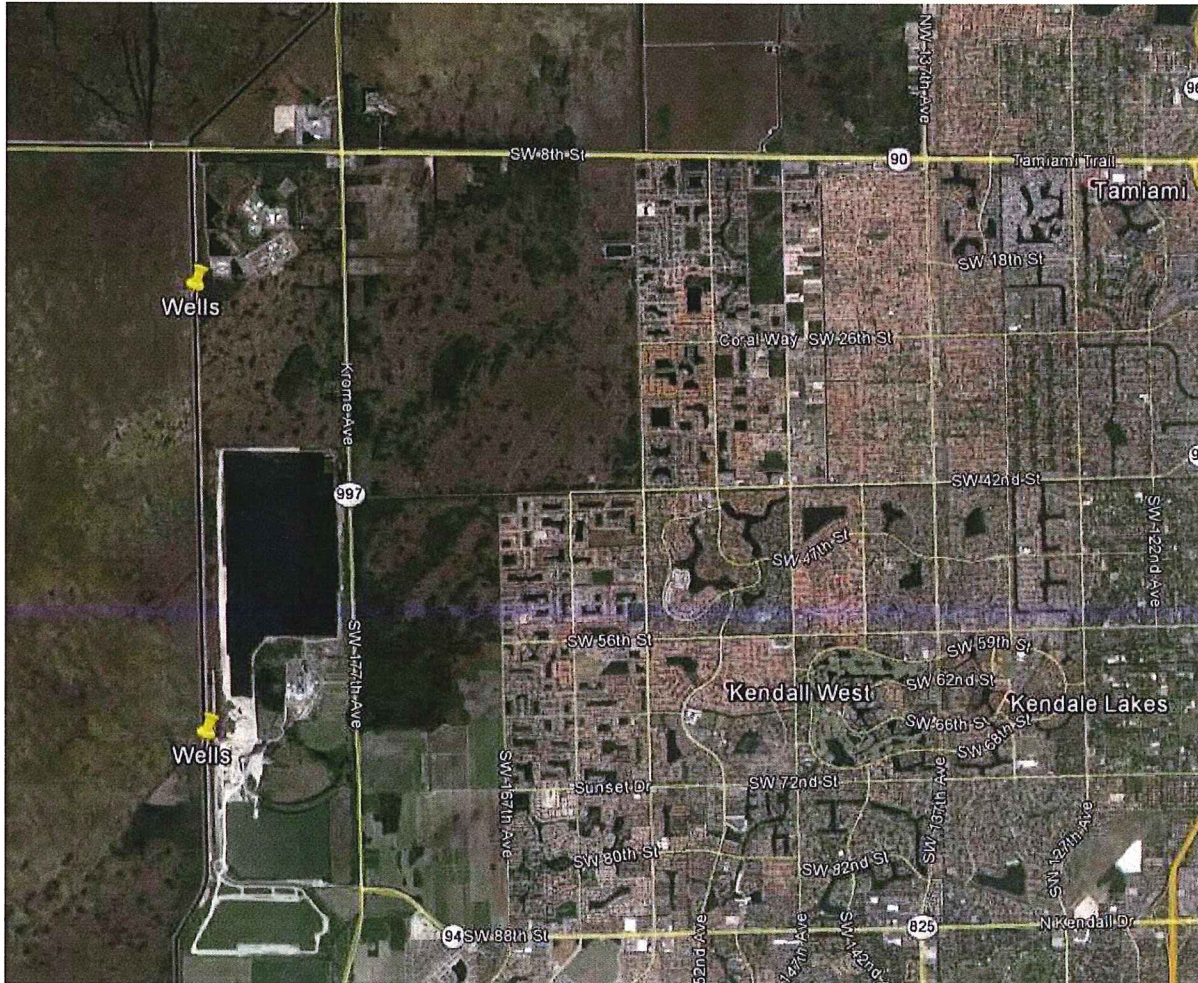
ABBREVIATIONS

GPS	Global Positioning System
INC.	Incorporated
LB	Florida Licensed Business Number
NGS	National Geodetic Survey
PSM	Professional Surveyor and Mapper
NAVD	North American Vertical Datum
CONT PT	Control Point
LAT	Latitude
LONG	Longitude
ELEV	Elevation

PURPOSE OF SURVEY

The Specific Purpose of this survey was to establish elevations on the measuring points of six (6) wells located in two separate clusters on the top of a levee road running along the west side of the L-31 canal, Miami-Dade, Florida. (See Figure 1 below)

Figure 1. Project Map



SCOPE OF WORK

Cardno, Inc. was to establish vertical values on a specified measuring point on each of the six (6) wells. The wells are identified as L31NNGW3, L31NNGW4, L31NSGW1, L31NSGW2, L31NSGW3 and L31NSGW4. Horizontal values were also obtained for each well. All of the points were geo-referenced to the following Horizontal Datum: Florida State Plane Coordinate System, East Zone, Units - U.S. Survey Feet, North American Datum of 1983. Orthometric heights were derived using GEOID 2012A and are referenced to the North American Vertical Datum of 1988 (NAVD 88). Values shown in the National Geodetic Vertical Datum of 1929 (NGVD29) were converted using the values as shown on the South Florida Water Management District control point sheets (+1.56 feet from NAVD88 to NGVD29).

METHODOLOGY

The horizontal positional data of the wells was collected utilizing Real Time Kinematic Global Positioning System (RTK GPS) procedures. All GPS points were collected using a Trimble R8-Model II receiver / antenna mounted on fixed-height rods using the Trimble VRS Network. All points were occupied for a ten second duration collecting positional data at a rate of one (1) position per second.

Two (2) benchmarks were recovered near each well site. The benchmarks used were "JBA 33", "JBA 31", "JBA 22" and "JBA 39R". Conventional three-wire leveling was then used to run an elevation between the benchmarks and through the well measuring points. See **Appendix C** for benchmark information.

Pictures were taken at each well to show the well site and a close-up of the measuring point location (See **Appendix A**).

All data was combined and entered into a spreadsheet (See **Appendix B**).

ACCURACY

The methods used to collect the horizontal values of the wells have been utilized and tested by this firm to have an expected accuracy of 0.20 or better.

Well measuring points elevated by 3-wire leveling procedures meet or exceed 3rd Order accuracy as set forth by the Federal Geodetic Control Committee, Standards and Specifications for Geodetic Control Networks, September 1984.

PROJECT PERSONNEL

Office Personnel:

Scott Urquhart, PSM – Project Manager

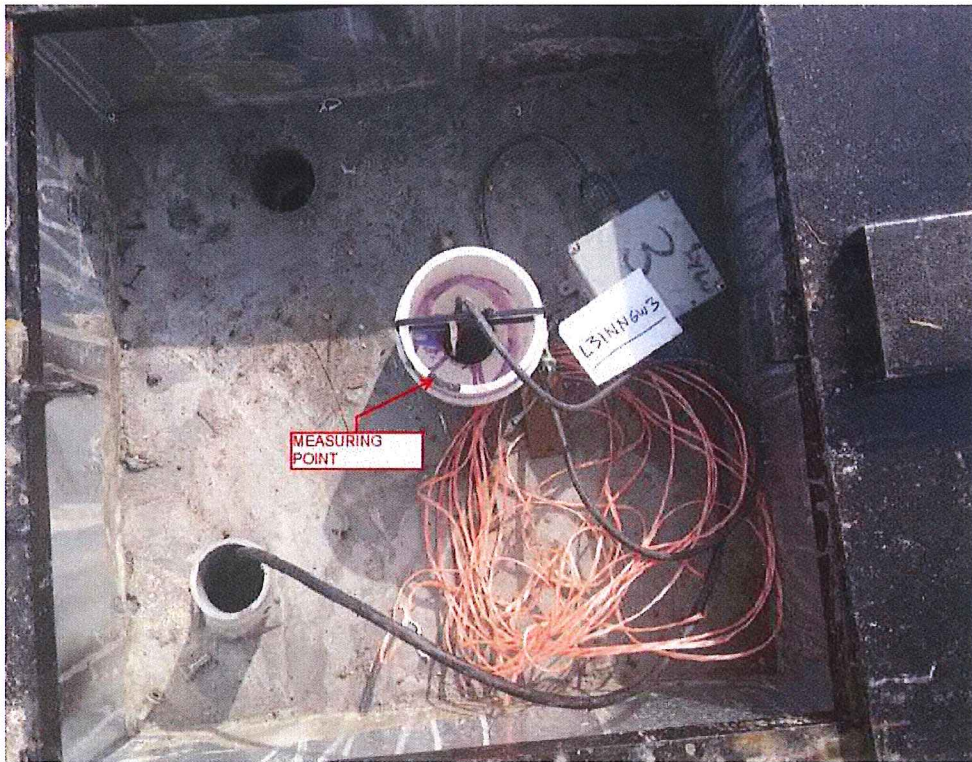
Field Personnel:

Josh Haywood – Crew Chief

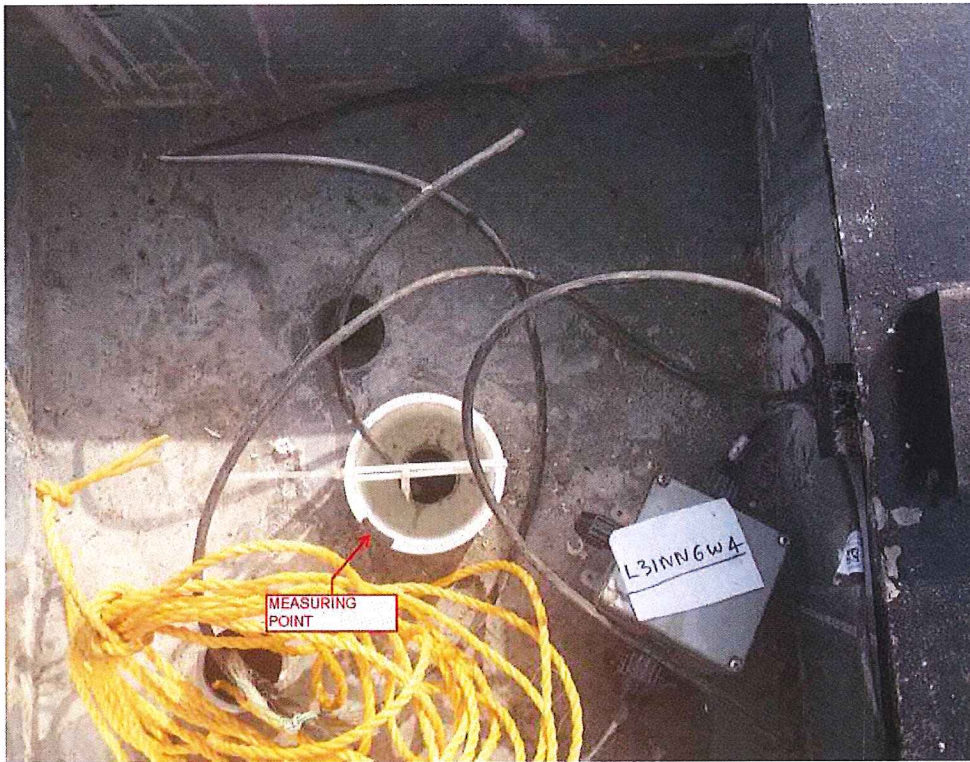
James Connors – Instrument Man

Appendix A

WELL: L31NNGW3



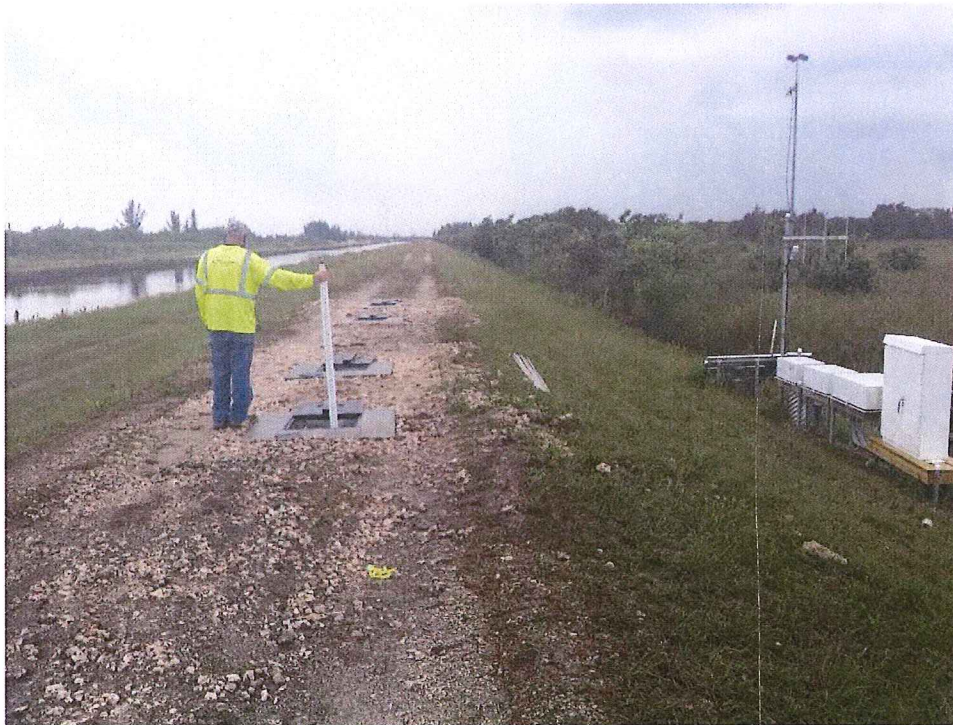
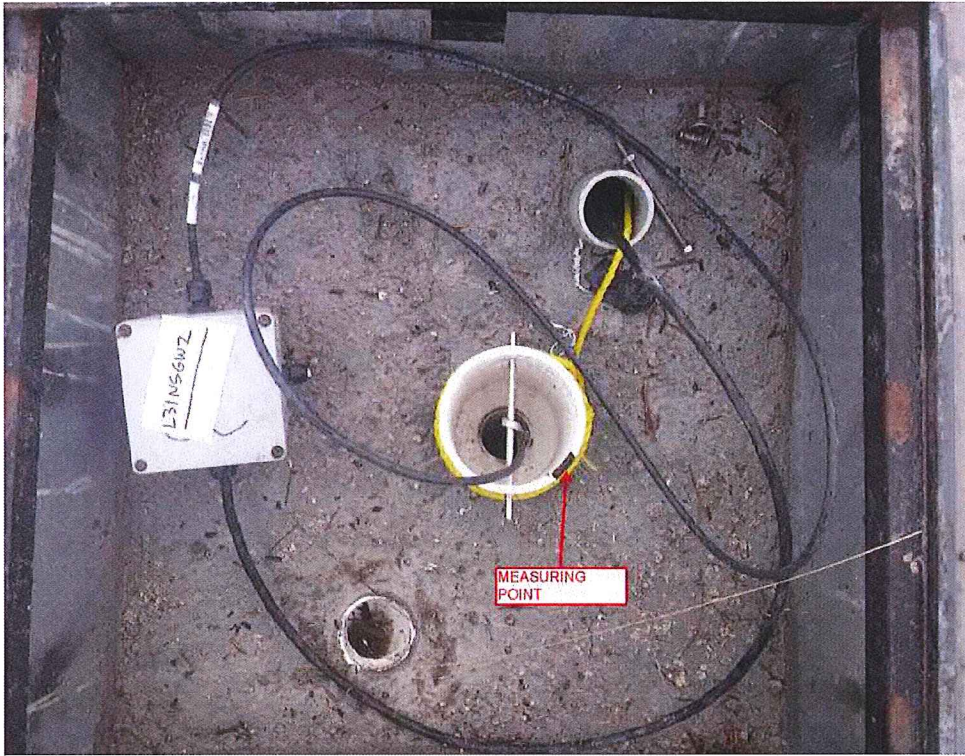
WELL: L31NNGW4



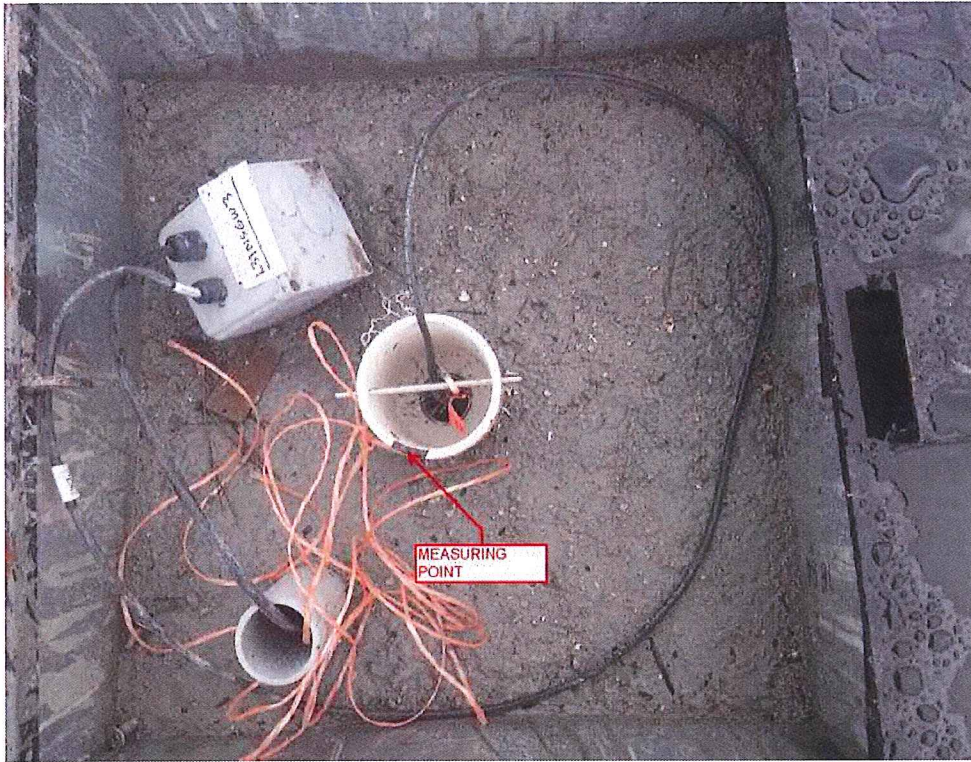
WELL: L31NSGW1



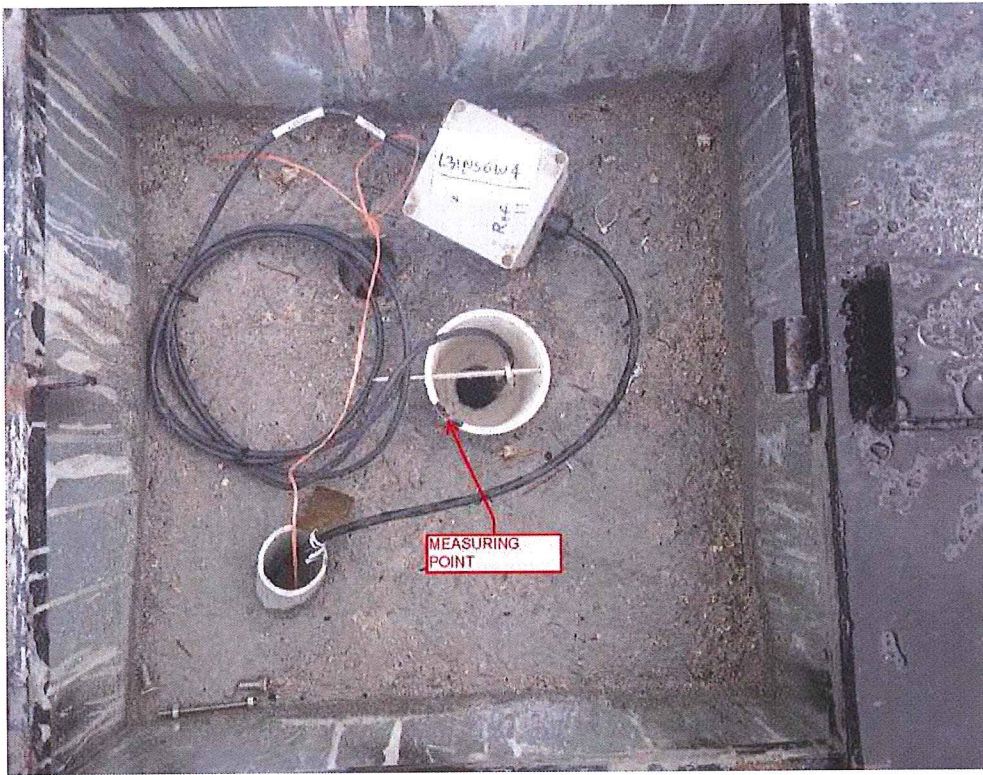
WELL: L31NSGW2



WELL: L31NSGW3



WELL: L31NSGW4



Appendix B

WELL ID.	LATITUDE	LONGITUDE	NORTHING	EASTING	MEASURING POINT ELEVATION (NGVD29)	MEASURING POINT ELEVATION (NAVD88)
L31NNGW3	N 25°44'46.47"	W 80°29'52.33"	513777.2	821445.3	15.92	14.36
L31NNGW4	N 25°44'46.24"	W 80°29'52.31"	513753.9	821447.2	15.91	14.35
L31NSGW2	N 25°42'07.36"	W 80°29'46.27"	497715.1	822061.3	15.44	13.88
L31NSGW1	N 25°42'07.25"	W 80°29'46.26"	497704.7	822062.2	15.57	14.01
L31NSGW3	N 25°42'07.05"	W 80°29'46.25"	497683.9	822063.3	15.50	13.94
L31NSGW4	N 25°42'06.93"	W 80°29'46.24"	497672.3	822063.7	15.32	13.76

Appendix C



EDMAN & ASSOC
SERVICE



J B A 3.3

BENCHM

NATIONAL

L P P A R K

The NGS Data Sheet

See file [dsdata.txt](#) for more information about the datasheet.

```

PROGRAM = datasheet95, VERSION = 8.7.1
1      National Geodetic Survey,  Retrieval Date = SEPTEMBER 30, 2015
AJ8370 *****
AJ8370 DESIGNATION - JBA 33
AJ8370 PID - AJ8370
AJ8370 STATE/COUNTY- FL/MIAMI-DADE
AJ8370 COUNTRY - US
AJ8370 USGS QUAD - SOUTH MIAMI NW (1988)
AJ8370
AJ8370 *CURRENT SURVEY CONTROL
AJ8370
AJ8370 *-----
AJ8370* NAD 83(1986) POSITION- 25 44 42. (N) 080 29 52. (W) SCALED
AJ8370* NAVD 88 ORTHO HEIGHT - 1.962 (meters) 6.44 (feet) ADJUSTED
AJ8370 *-----
AJ8370 GEOID HEIGHT - -24.68 (meters) GEOID12B
AJ8370 DYNAMIC HEIGHT - 1.958 (meters) 6.42 (feet) COMP
AJ8370 MODELED GRAVITY - 979,028.6 (mgal) NAVD 88
AJ8370
AJ8370 VERT ORDER - FIRST CLASS II
AJ8370
AJ8370.The horizontal coordinates were scaled from a topographic map and have
AJ8370.an estimated accuracy of +/- 6 seconds.
AJ8370.
AJ8370.The orthometric height was determined by differential leveling and
AJ8370.adjusted by the NATIONAL GEODETIC SURVEY
AJ8370.in June 2002.
AJ8370
AJ8370.The dynamic height is computed by dividing the NAVD 88
AJ8370.geopotential number by the normal gravity value computed on the
AJ8370.Geodetic Reference System of 1980 (GRS 80) ellipsoid at 45
AJ8370.degrees latitude (g = 980.6199 gals.).
AJ8370
AJ8370.The modeled gravity was interpolated from observed gravity values.
AJ8370
AJ8370; North East Units Estimated Accuracy
AJ8370;SPC FL E - 156,460. 250,390. MT (+/- 180 meters Scaled)
AJ8370
AJ8370 SUPERSEDED SURVEY CONTROL
AJ8370
AJ8370.No superseded survey control is available for this station.
AJ8370
AJ8370_U.S. NATIONAL GRID SPATIAL ADDRESS: 17RNJ503475(NAD 83)
AJ8370
AJ8370_MARKER: DB = BENCH MARK DISK
AJ8370_SETTING: 0 = UNSPECIFIED SETTING
AJ8370_STAMPING: JBA 33
AJ8370_MARK LOGO: BEDMEN
AJ8370_MAGNETIC: N = NO MAGNETIC MATERIAL
AJ8370_STABILITY: B = PROBABLY HOLD POSITION/ELEVATION WELL
AJ8370_SATELLITE: THE SITE LOCATION WAS REPORTED AS SUITABLE FOR
AJ8370+SATELLITE: SATELLITE OBSERVATIONS - January 17, 2008

```

AJ8370				
AJ8370	HISTORY	- Date	Condition	Report By
AJ8370	HISTORY	- UNK	MONUMENTED	BEDMEN
AJ8370	HISTORY	- 20010103	GOOD	FLDEP
AJ8370	HISTORY	- 20080117	GOOD	DCPWD

AJ8370

AJ8370

STATION DESCRIPTION

AJ8370

AJ8370'DESCRIBED BY FL DEPT OF ENV PRO 2001 (JLM)

AJ8370'THE MARK IS ABOUT 18.2 MI (29.3 KM) NORTH OF HOMESTEAD, 9.0 MI (14.5
 AJ8370'KM) NORTHWEST OF KENDALL, IN SECTION 11, TOWNSHIP 54 SOUTH, RANGE 38
 AJ8370'EAST. TO REACH THE MARK FROM THE JUNCTION OF STATE ROAD 997 (KROME
 AJ8370'AVENUE SW 177 AVENUE) AND U.S. HIGHWAY 41 (TAMIAMI TRAIL SW 8TH ST)
 AJ8370'ABOUT 10.0 MI (16.1 KM) SOUTHWEST OF HIALEAH, GO WEST ON U.S. HIGHWAY
 AJ8370'41 (TAMIAMI TRAIL SW 8TH ST) FOR 1.0 MI (1.6 KM) TO THE WEST END OF
 AJ8370'BRIDGE NUMBER 8705851979 AND THE JUNCTION OF A LEVEE ROAD (L-31N) ON
 AJ8370'THE WEST SIDE OF THE CANAL, TURN LEFT ON LEVEE ROAD (L-31N) AND GO
 AJ8370'SOUTH FOR 1.1 MI (1.8 KM) TO THE MARK ON THE LEFT, A 5/8-INCH
 AJ8370'STAINLESS STEEL ROD SET IN CONCRETE ENCASED IN A 4-INCH PVE PIPE
 AJ8370'PROJECTING 0.5 FT (15.2 CM) ABOVE THE LEVEL OF THE GROUND AND ABOVE
 AJ8370'THE LEVEL OF THE LEVEE ROAD. LOCATED 65.6 FT (20.0 M) EAST OF THE
 AJ8370'APPROXIMATE CENTERLINE OF THE LEVEE ROAD, 23.5 FT (7.2 M) EAST OF THE
 AJ8370'APPROXIMATE CENTERLINE OF A TURNOUT, 12.0 FT (3.7 M) WEST OF A U.S.
 AJ8370'GEOLOGICAL SURVEY STORM GAGE IN THE WATER, 2.7 FT (0.8 M) EAST OF THE
 AJ8370'SOUTHEAST CORNER OF A 4.0 FT (1.2 M) X 7.0 FT (2.1 M) BLOCK BUILDING
 AJ8370'AND 1.0 FT (0.3 M) WEST OF A CARSONITE WITNESS POST. NOTE FOR KEY
 AJ8370'CONTACT SOUTH FLORIDA WATER MANAGEMENT DISTRICT AT 2195 NORTHEAST 8TH
 AJ8370'STREET HOMESTEAD, FL 33033, PHONE 305-242-5955.

AJ8370

AJ8370

STATION RECOVERY (2008)

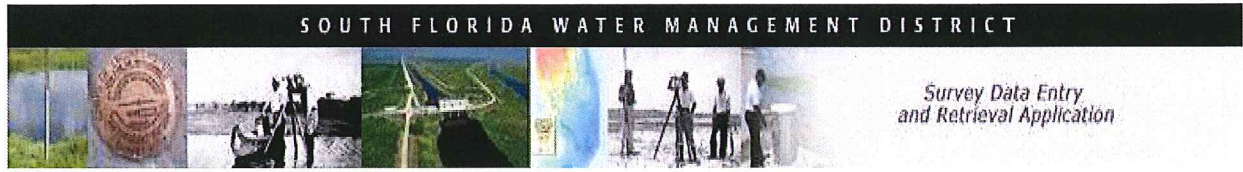
AJ8370

AJ8370'RECOVERY NOTE BY DADE COUNTY PUBLIC WORKS DEPARTMENT 2008 (MJW)
 AJ8370'RECOVERED IN GOOD CONDITION.

*** retrieval complete.

Elapsed Time = 00:00:02





Survey Data Entry and Retrieval Application (SDERA) Print Output

Control Point Search Results		Derived Data - Denoted By: **	
Designation	JBA31	Record State	ACCEPTED
NGS PID			
Project Name	L-031N	Date Entered/Updated	06/27/2009
Updated By	ATLAS DATA LOAD	Status	
Party Chief		Type	V
Monument Set By	JAMES BEADMAN & ASSOCIATES INC	Date Established	01/01/1995
County	MIAMI-DADE	Section	11
Township	54	Range	38
Quadrangle	SOUTH MIAMI NW	Offset (29 to 88)	
NGS Source BM		CCR Link	
Ctrl Pt Source(s)			

<u>Horizontal</u>	<u>NAD 1927</u>	<u>NAD 1983</u>	<u>Vertical</u>	<u>NGVD 1929</u>	<u>NAVD 1988</u>
Latitude		25 44 47.0	Class	II	II
Longitude		80 29 53.0	Order	2	2
Northing(Y)			Elevation	7.964	6.409
Easting(X)			Measurement Unit	Feet	Feet
Class					
Order					
NAD83 Adj Year					

Field Book

Field Book Pages

Stamping

JBA 31

How to Reach

Description

THE NATIONAL PARK SERVICE DESCRIPTION
 JAMES BEADMAN AND ASSOC, INC.
 CONSULTING SURVEYORS
 PHONE 305/252-0741
 VERTICAL AND HORIZONTAL CONTROL

MONUMENTS
FOR NATIONAL PARK SERVICE

DESIGNATION: JBA 031
PROJECT: ENP/L-31/WASD PID: NONE SSN: NONE
STATE: FLORIDA COUNTY: DADE USGS QUAD: SOUTH MIAMI NW
DATE SET: 3/28/1995 SET BY: JBA
LAST RECOVERED: 12/12/1997 LAST RECOVERED BY: JBA
VERTICAL ORDER: SECOND CLASS TWO
NGVD 29 FEET: 7.9641 NAVD 88 FEET: 6.409
NGVD 29 METERS 2.4275 88 MINUS 29: -0.474 IN METERS
NAD 1927 HORIZONTAL ORDER: HAND GPS
UTM EASTING: 550342.000 LATITUDE: 25 44 47 SPC EASTING:
UTM NORTHING: 2847532.000 LONGITUDE: 80 29 53 SPC NORTHING:
STAMPED: JBA 31

DESCRIPTION:

THE STATION MARK IS A 5/8 STAINLESS STEEL ROD WITH A 3 1/2 ALUMINUM DISK SET IN CONCRETE
IN A 4 PVC PIPE APPROX. 3.5 INCHES ABOVE GROUND LEVEL.

FROM THE INTERSECTION OF KROME AVENUE (SW 177TH AVENUE) AND THE TAMIAMI TRAIL (US 41), GO WEST
ON THE TAMIAMI TRAIL ONE MILE TO THE ENTRANCE OF LEVEE ROAD ALONG THE WESTERLY SIDE OF CANAL
L-31, THENCE SOUTHERLY ON SAID LEVEE ROAD 0.87 MILES TO DOCK ON WESTERLY EDGE OF LEVEE L-31,
THENCE APPROXIMATELY 6 FEET SOUTHEAST FROM P.K. NAIL ON DOCK. NEAR WELL T1-1.

DISCLAIMER:

The South Florida Water Management District (hereinafter referred to as the DISTRICT) shall not be held liable for improper or incorrect use of the data, information, apparatus, products, processes or materials described and/or contained herein. These data, information, apparatus, products, processes, materials and related graphics are not legal documents and are not intended to be used as such. The user hereby recognizes that the information, data, apparatus, products, processes and materials are dynamic and may change over time without notice. However, the DISTRICT makes no commitment to update the information, data, apparatus, products, processes or materials contained herein.



The NGS Data Sheet

See file [dsdata.txt](#) for more information about the datasheet.

```

PROGRAM = datasheet95, VERSION = 8.7.1
1      National Geodetic Survey, Retrieval Date = SEPTEMBER 30, 2015
AJ8374 *****
AJ8374 DESIGNATION - JBA 22
AJ8374 PID - AJ8374
AJ8374 STATE/COUNTY- FL/MIAMI-DADE
AJ8374 COUNTRY - US
AJ8374 USGS QUAD - SOUTH MIAMI NW (1988)
AJ8374
AJ8374 *CURRENT SURVEY CONTROL
AJ8374
AJ8374* NAD 83(1986) POSITION- 25 42 05. (N) 080 29 46. (W) SCALED
AJ8374* NAVD 88 ORTHO HEIGHT - 2.051 (meters) 6.73 (feet) ADJUSTED
AJ8374
AJ8374 GEOID HEIGHT - -24.69 (meters) GEOID12B
AJ8374 DYNAMIC HEIGHT - 2.047 (meters) 6.72 (feet) COMP
AJ8374 MODELED GRAVITY - 979,022.7 (mgal) NAVD 88
AJ8374
AJ8374 VERT ORDER - FIRST CLASS II
AJ8374
AJ8374.The horizontal coordinates were scaled from a topographic map and have
AJ8374.an estimated accuracy of +/- 6 seconds.
AJ8374.
AJ8374.The orthometric height was determined by differential leveling and
AJ8374.adjusted by the NATIONAL GEODETIC SURVEY
AJ8374.in June 2002.
AJ8374
AJ8374.The dynamic height is computed by dividing the NAVD 88
AJ8374.geopotential number by the normal gravity value computed on the
AJ8374.Geodetic Reference System of 1980 (GRS 80) ellipsoid at 45
AJ8374.degrees latitude (g = 980.6199 gals.).
AJ8374
AJ8374.The modeled gravity was interpolated from observed gravity values.
AJ8374
AJ8374; North East Units Estimated Accuracy
AJ8374;SPC FL E - 151,630. 250,570. MT (+/- 180 meters Scaled)
AJ8374
AJ8374 SUPERSEDED SURVEY CONTROL
AJ8374
AJ8374.No superseded survey control is available for this station.
AJ8374
AJ8374_U.S. NATIONAL GRID SPATIAL ADDRESS: 17RNJ505427(NAD 83)
AJ8374
AJ8374_MARKER: DD = SURVEY DISK
AJ8374_SETTING: 0 = UNSPECIFIED SETTING
AJ8374_STAMPING: JBA 22
AJ8374_MARK LOGO: BEDMEN
AJ8374_MAGNETIC: B = BAR MAGNET IMBEDDED IN MONUMENT
AJ8374_STABILITY: C = MAY HOLD, BUT OF TYPE COMMONLY SUBJECT TO
AJ8374+STABILITY: SURFACE MOTION
AJ8374_SATELLITE: THE SITE LOCATION WAS REPORTED AS SUITABLE FOR

```

AJ8374+SATELLITE: SATELLITE OBSERVATIONS - January 17, 2008

AJ8374

AJ8374	HISTORY	- Date	Condition	Report By
AJ8374	HISTORY	- UNK	MONUMENTED	BEDMEN
AJ8374	HISTORY	- 20010103	GOOD	FLDEP
AJ8374	HISTORY	- 20080117	GOOD	DCPWD

AJ8374

AJ8374

AJ8374

STATION DESCRIPTION

AJ8374'DESCRIBED BY FL DEPT OF ENV PRO 2001 (JLM)

AJ8374'THE MARK IS ABOUT 13.0 MI (20.9 KM) NORTH OF HOMESTEAD, 5.0 MI (8.0
 AJ8374'KM) WEST OF KENDALL, IN SECTION 35, TOWNSHIP 54 SOUTH, RANGE 38 EAST.
 AJ8374'TO REACH THE MARK FROM THE JUNCTION OF STATE ROAD 997 (KROME AVENUE SW
 AJ8374'177 AVENUE) AND U.S. HIGHWAY 41 (TAMIAMI TRAIL SW 8TH ST) ABOUT 10.0
 AJ8374'MI (16.1 KM) SOUTHWEST OF HIALEAH, GO WEST ON U.S. HIGHWAY 41
 AJ8374'(TAMIAMI TRAIL SW 8TH ST) FOR 1.0 MI (1.6 KM) TO THE WEST END OF
 AJ8374'BRIDGE NUMBER 8705851979 AND THE JUNCTION OF A LEVEE ROAD (L-31N) ON
 AJ8374'THE WEST SIDE OF THE CANAL, TURN LEFT ON LEVEE ROAD (L-31N) AND GO
 AJ8374'SOUTH FOR 4.1 MI (6.6 KM) TO THE MARK ON THE LEFT, A STAINLESS STEEL
 AJ8374'ROD WITH A 3 1/2-INCH ALUMINUM DISK SET IN CONCRETE IN A 4-INCH PVC
 AJ8374'PIPE PROJECTING 0.3 FT (9.1 CM) ABOVE THE LEVEL OF THE GROUND AND
 AJ8374'ABOVE THE LEVEL OF THE LOWER LEVEE ROAD (NEXT TO A 4.0 FT (1.2 M) X
 AJ8374'7.0 FT (2.1 M) BLOCK BUILDING USED TO HOUSE A U.S. GEOLOGICAL STORM
 AJ8374'GAGE) . LOCATED 3.7 FT (1.1 M) SOUTH OF A WOODEN DECK HOLDING A STORM
 AJ8374'GAGE IN THE WATER, 2.1 FT (0.6 M) EAST OF THE SOUTHEAST CORNER OF A
 AJ8374'4.0 FT (1.2 M) X 7.0 FT (2.1 M) BLOCK BUILDING AND 1.3 FT (0.4 M) WEST
 AJ8374'OF A CARSONITE WITNESS POST. NOTE A BAR MAGNETIC WAS PLACED ON THE
 AJ8374'SOUTH SIDE OF THE MONUMENT. NOTE FOR KEY CONTACT SOUTH FLORIDA WATER
 AJ8374'MANAGEMENT DISTRICT AT 2195 NORTHEAST 8TH STREET HOMESTEAD, FL 33033,
 AJ8374'PHONE 305-242-5955.

AJ8374

AJ8374

AJ8374

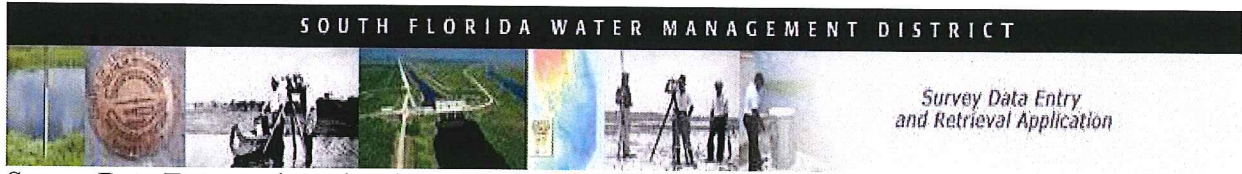
STATION RECOVERY (2008)

AJ8374'RECOVERY NOTE BY DADE COUNTY PUBLIC WORKS DEPARTMENT 2008 (MJW)
 AJ8374'RECOVERED IN GOOD CONDITION.

*** retrieval complete.

Elapsed Time = 00:00:01





Survey Data Entry and Retrieval Application (SDERA) Print Output

Control Point Search Results

Derived Data - Denoted
By: **

Designation	JBA39R	Record State	ACCEPTED
NGS PID			
Project Name	L-031N	Date Entered/Updated	06/27/2009
Updated By	ATLAS DATA LOAD	Status	
Party Chief		Type	V
Monument Set By	JAMES BEADMAN & ASSOCIATES INC	Date Established	01/01/1995
County	MIAMI-DADE	Section	35
Township	54	Range	38
Quadrangle	SOUTH MIAMI NW	Offset (29 to 88)	
NGS Source BM		CCR Link	
Ctrl Pt Source(s)			

<u>Horizontal</u>	<u>NAD 1927</u>	<u>NAD 1983</u>	<u>Vertical</u>	<u>NGVD 1929</u>	<u>NAVD 1988</u>
Latitude		25 42 09.0	Class	II	II
Longitude		80 29 48.0	Order	2	2
Northing(Y)			Elevation	9.405	7.85
Easting(X)			Measurement Unit	Feet	Feet
Class					
Order					
NAD83 Adj Year					

Field Book

Field Book Pages

Stamping

JBA 39R

How to Reach

Description

THE NATIONAL PARK SERVICE DESCRIPTION
 JAMES BEADMAN AND ASSOC, INC.
 CONSULTING SURVEYORS
 PHONE 305/252-0741
 VERTICAL AND HORIZONTAL CONTROL

MONUMENTS
FOR NATIONAL PARK SERVICE

DESIGNATION: JBA 039R
PROJECT: ENP/L-31/WASD PID: NONE SSN: NONE
STATE: FLORIDA COUNTY: DADE USGS QUAD: SOUTH MIAMI NW
DATE SET: 5/4/1995 SET BY: JBA
LAST RECOVERED: 5/4/1995 LAST RECOVERED BY: JBA
VERTICAL ORDER: SECOND CLASS TWO
NGVD 29 FEET: 9.405 NAVD 88 FEET: 7.850
NGVD 29 METERS 2.8667 88 MINUS 29: -0.474 IN METERS
NAD 1927 HORIZONTAL ORDER: HAND GPS
UTM EASTING: 550500.000 LATITUDE: 25 42 09 SPC EASTING:
UTM NORTHING: 2842673.000 LONGITUDE: 80 29 48 SPC NORTHING:
STAMPED: JBA 39R

DESCRIPTION:

MARK IS A 5/8 STAINLESS STEEL ROD WITH A 3 1/2 ALUMINUM DISK SET IN CONCRETE IN A 4
PVC
PIPE AT GROUND LEVEL.

FROM THE INTERSECTION OF KROME AVENUE (SW 177TH AVENUE) AND THE TAMiami
TRAIL (US 41), GO WEST
ON THE TAMiami TRAIL ONE MILE TO THE ENTRANCE TO THE LEVEE ROAD ALONG THE
WESTERLY SIDE OF
CANAL L-31, THENCE SOUTHERLY ON SAID LEVEE ROAD 3.90 MILES TO THE MARK, SAID
MARK BEING 7 FEET
EAST OF EAST END OF DOCK ON WEST SIDE OF LEVEE L-31. NEAR WELL T2-1.

DISCLAIMER:

The South Florida Water Management District (hereinafter referred to as the DISTRICT) shall not be held liable for improper or incorrect use of the data, information, apparatus, products, processes or materials described and/or contained herein. These data, information, apparatus, products, processes, materials and related graphics are not legal documents and are not intended to be used as such. The user hereby recognizes that the information, data, apparatus, products, processes and materials are dynamic and may change over time without notice. However, the DISTRICT makes no commitment to update the information, data, apparatus, products, processes or materials contained herein.