

MV Geophysical X-Y CALIPER GAMMA RAY LOG

Company: SE Drilling Services, Inc.
 Well: LR PW-5
 Field: Pahokee-Belle Glades
 County: Palm Beach
 State: Florida
 Location: Palm Beach County Water Utility Department
 Highway: 715 North of Belle Glades

Log Interval: 10' to 1200'
 Depth: 1120'
 Date: 11/16/06

Operator: [Name]
 Instrument: [Model]
 Date: [Date]

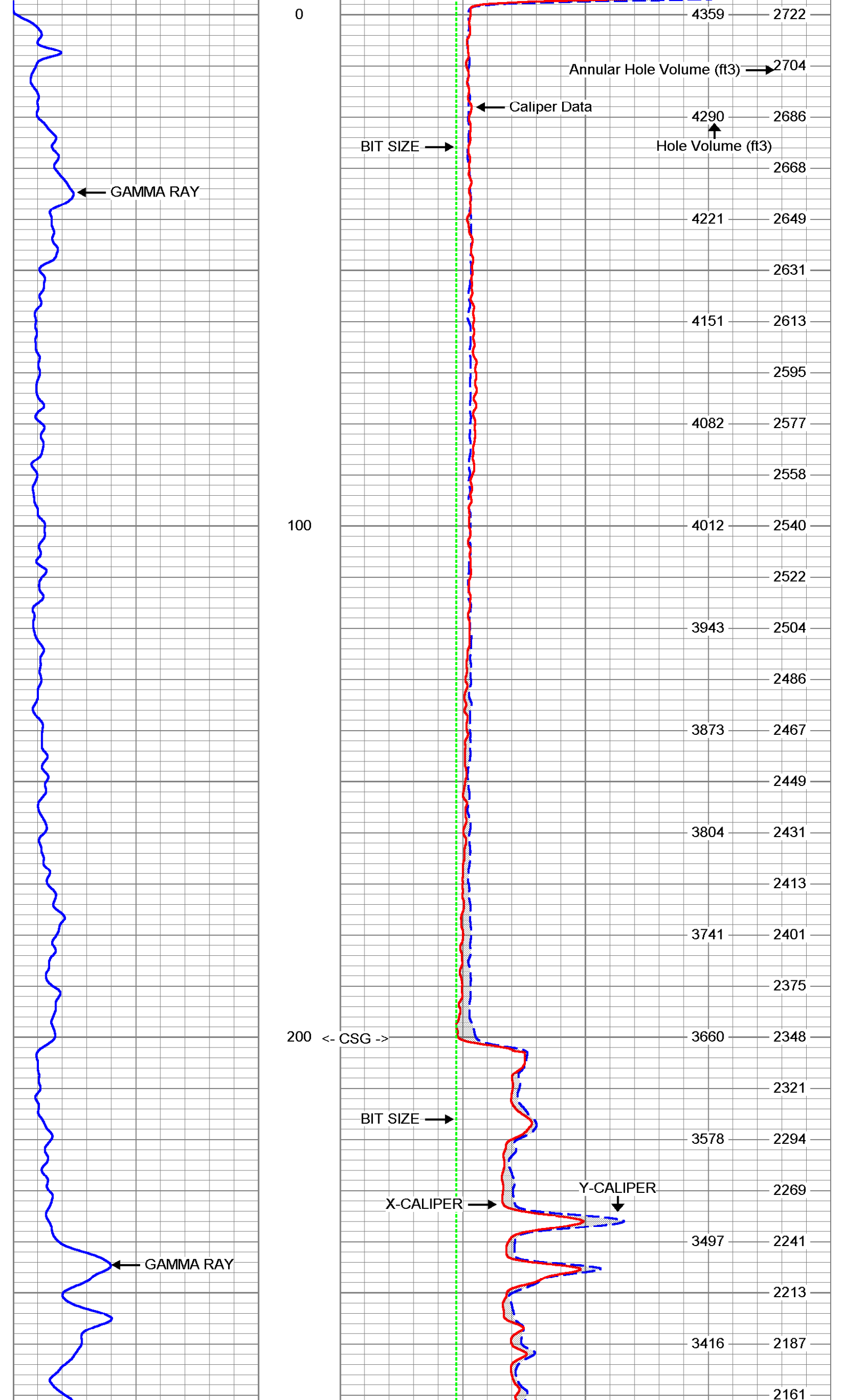
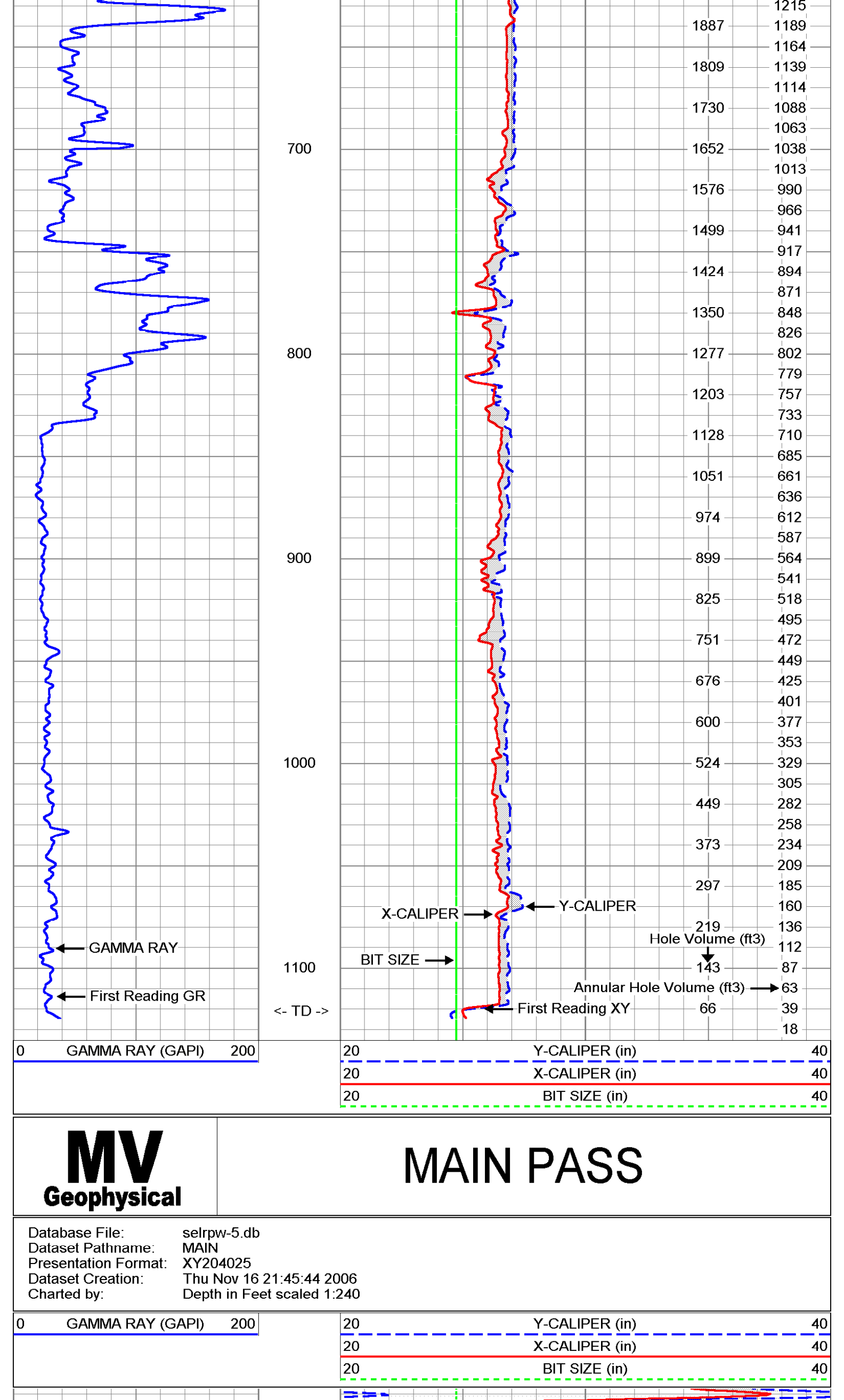
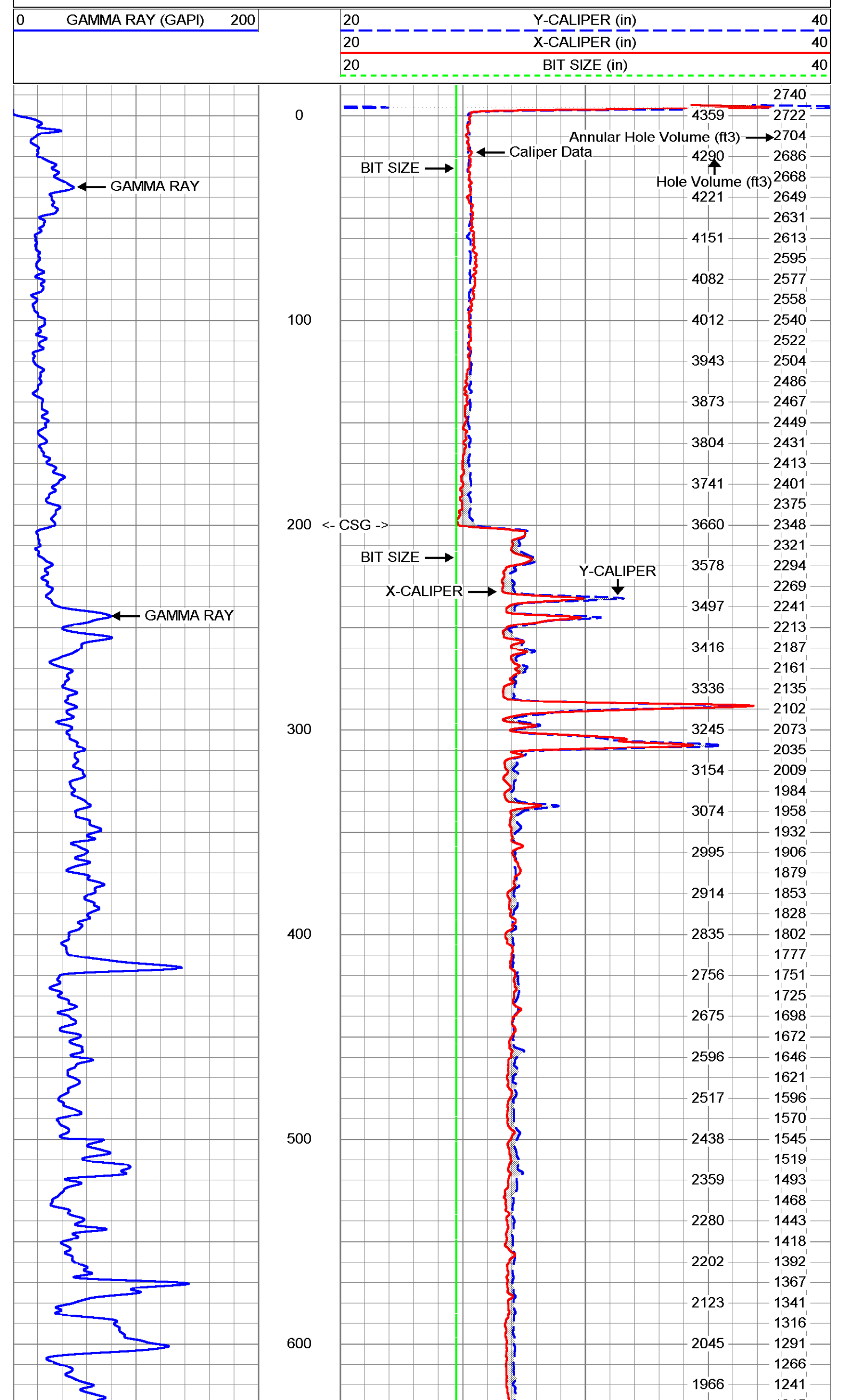
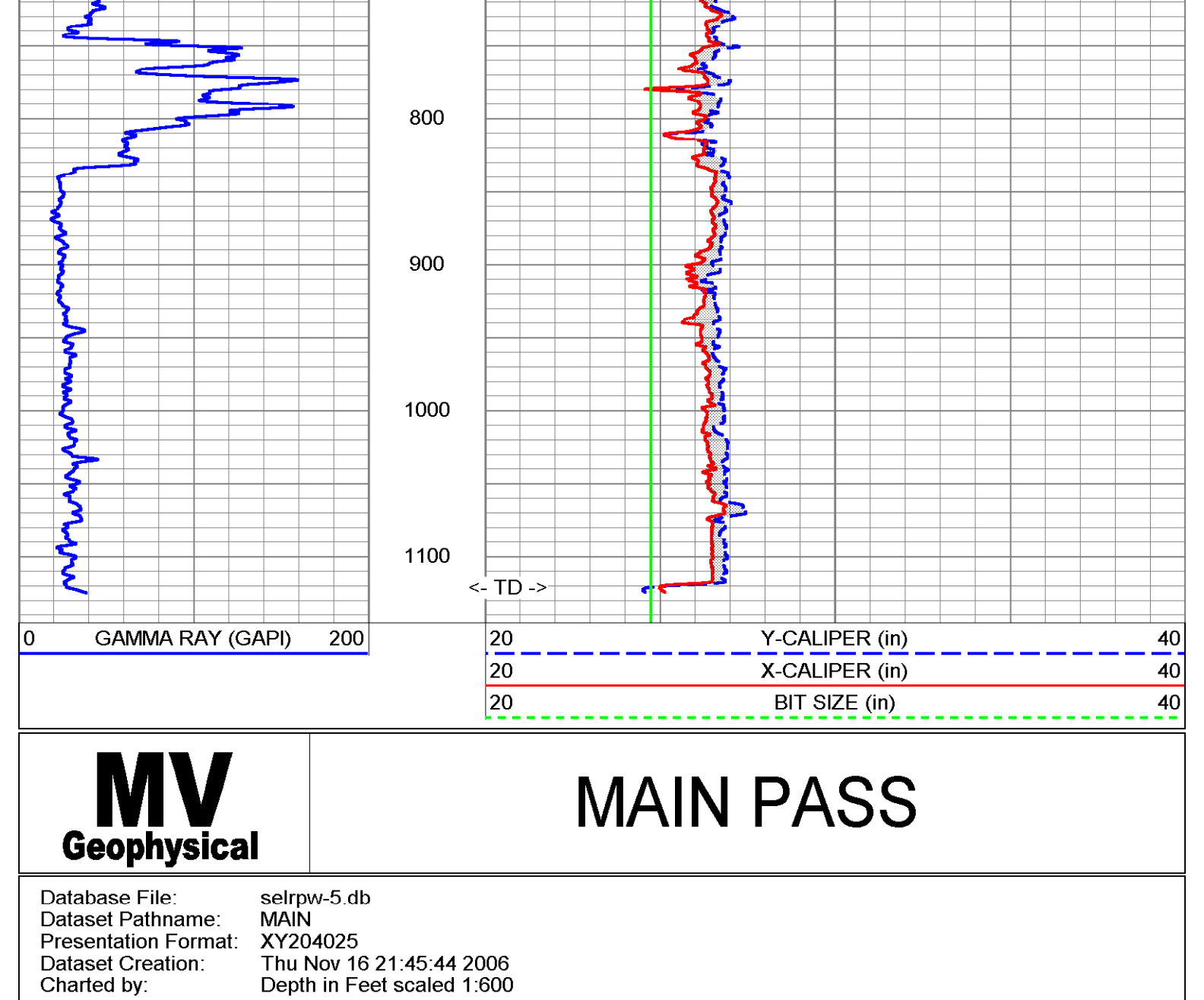
Log Interval: 10' to 1200'
 Depth: 1120'
 Date: 11/16/06

Log Interval: 10' to 1200'
 Depth: 1120'
 Date: 11/16/06

All interpretations are opinions based on inferences from electrical or other measurements and we cannot and do not guarantee the accuracy or correctness of any interpretation, and we shall not, except in the case of gross or willful negligence on our part, be liable or responsible for any loss, costs, damages, or expenses incurred or sustained by anyone resulting from any interpretation made by any of our officers, agents or employees. These interpretations are also subject to our general terms and conditions set out in our current Price Schedule.

Comments:

X-Y Caliper Arm Extensions: 51"
 FUTURE CASING SIZES:
 16" PVC 200-1150'
 17.4" PVC SURF to 200'

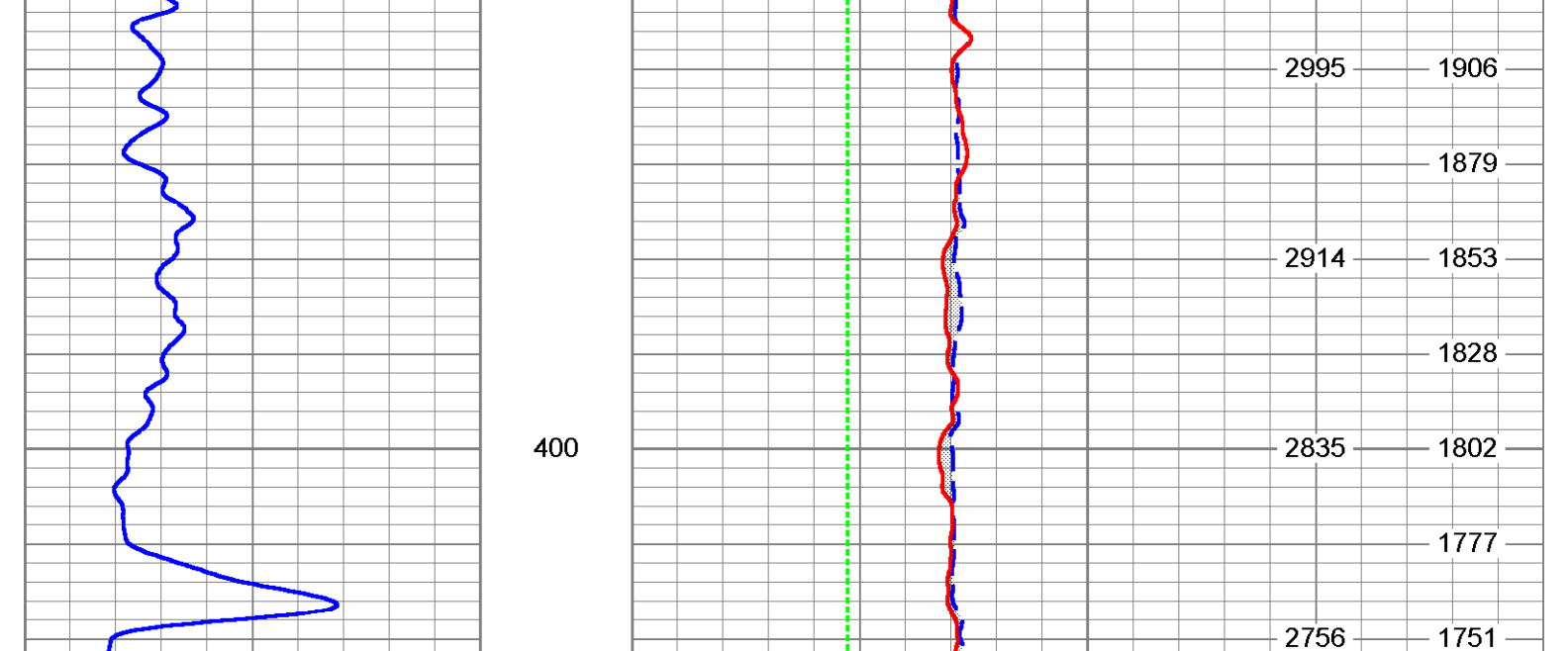


XY Caliper Calibration Report

Serial Number:	01L	
Tool Model:	XYCL	
Performed:	Fri Nov 03 19:54:08 2006	
Small Ring:	25.25	in
Large Ring:	51	in
	X Caliper	Y Caliper
Reading with Small Ring:	793.2	791.2
Reading with Large Ring:	1124	1071
Gain:	0.0778416	0.09203
Offset:	-36.494	-47.5642

Gamma Ray Calibration Report

Serial Number:	02	
Tool Model:	GROH	
Performed:	Fri Nov 16 20:21:05 2006	
Calibrator Value:	120	GAPI
Background Reading:	28.861	cps
Calibrator Reading:	152.558	cps
Sensitivity:	0.970112	GAPI/cps



Dataset: run1pass3
 Total Length: 9.35 ft
 Total Weight: 127.00 lb
 O.D.: 3.50 in

Company	SE Drilling Services, Inc.
Well	LR PW-5
Field	Pahokee-Belle Glades
County	Palm Beach
Location	Lakes Region Production Well Project Highway 715 (North of Belle Glade) Palm Beach County Water Utility Department
State/Prv	Florida
Other Services	XVYRS DILSR
Drill Bit	Permanent Datum
Log Measured From	Top of Casing
Log Measured From	Top of Casing
Depth (m)	16.40 (53.80)
Depth (ft)	11.22
Log Interval	20.0'
Open Hole Size	24.75"
Log Interval	min
Max. Recorded Temp.	na
Estimated Cement Top	15.15 119.00'
Time Log on Bottom	19:15 119.00'
Estimated Number	MASS-1
Recorded by	S. JAMES
Reviewed by	T. JAMES (BEO)
Charted by	BR. ZIGLER (SES)
Downed	8 GERMANS (SE)
Run Number	24.75'
OHF	20'
Bottom Record	116.0'
OHF	116.0'
Bottom Record	116.0'
OHF	116.0'
Bottom Record	20'
OHF	20'
Bottom Record	0.31'
OHF	0.31'
Bottom Record	20.0'
OHF	20.0'
Bottom Record	20.0'
OHF	20.0'

Charted by: 2006534

SP (mV) 5 -5
GR (GAP) 200 0

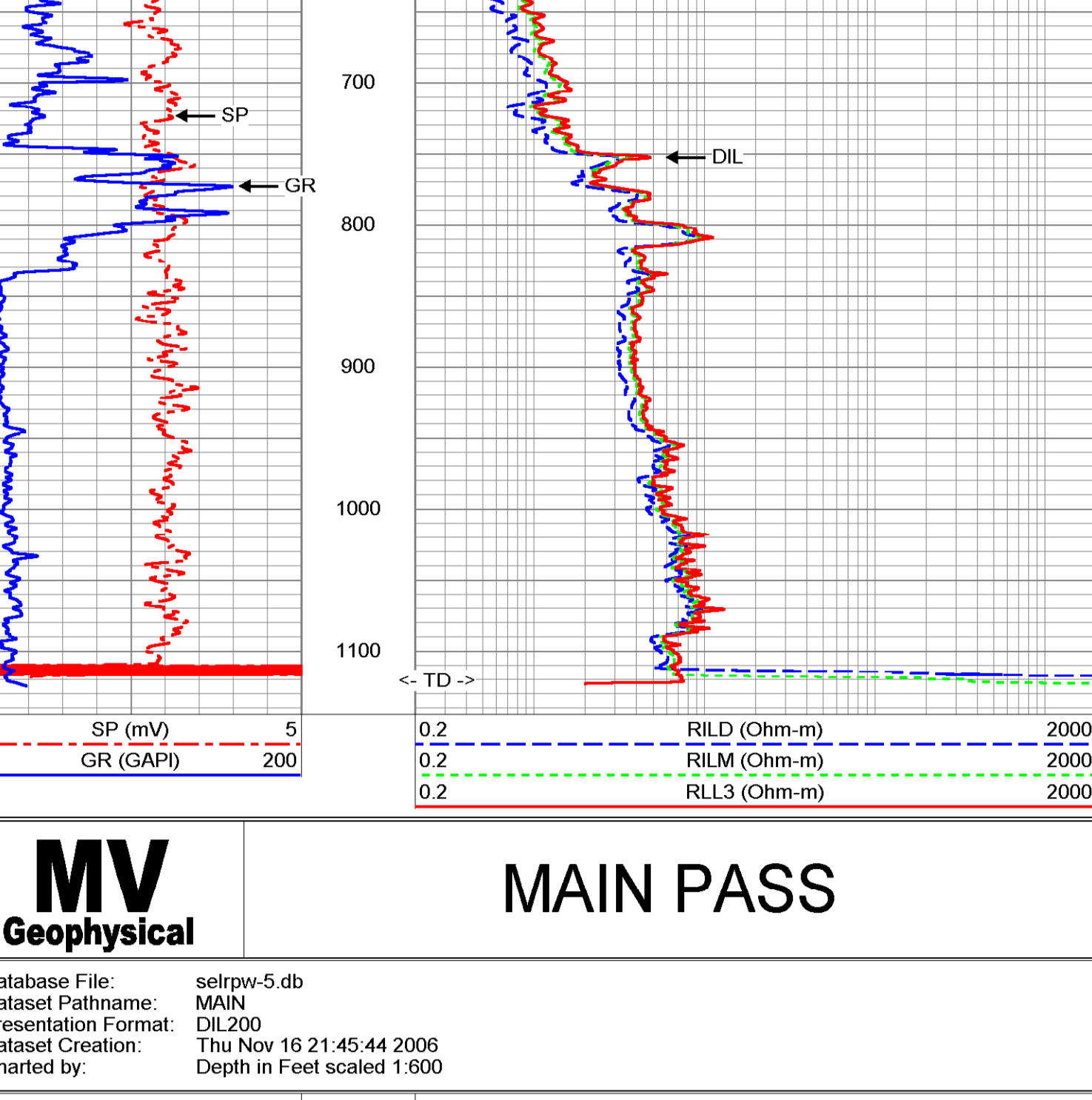
RILD (Ohm-m) 2000 0.2
RILM (Ohm-m) 2000 0.2
RLL3 (Ohm-m) 2000 0.2

Log Interval: min
Max. Recorded Temp: na
Estimated Cement Top: 15.15 119.00'
Time Log on Bottom: 19:15 119.00'
Estimated Number: MASS-1
Recorded by: S. JAMES
Reviewed by: T. JAMES (BEO)
Charted by: BR. ZIGLER (SES)
Downed: 8 GERMANS (SE)
Run Number: 24.75'
OHF: 20'
Bottom Record: 116.0'
OHF: 116.0'
Bottom Record: 20'
OHF: 20'
Bottom Record: 0.31'
OHF: 0.31'
Bottom Record: 20.0'
OHF: 20.0'

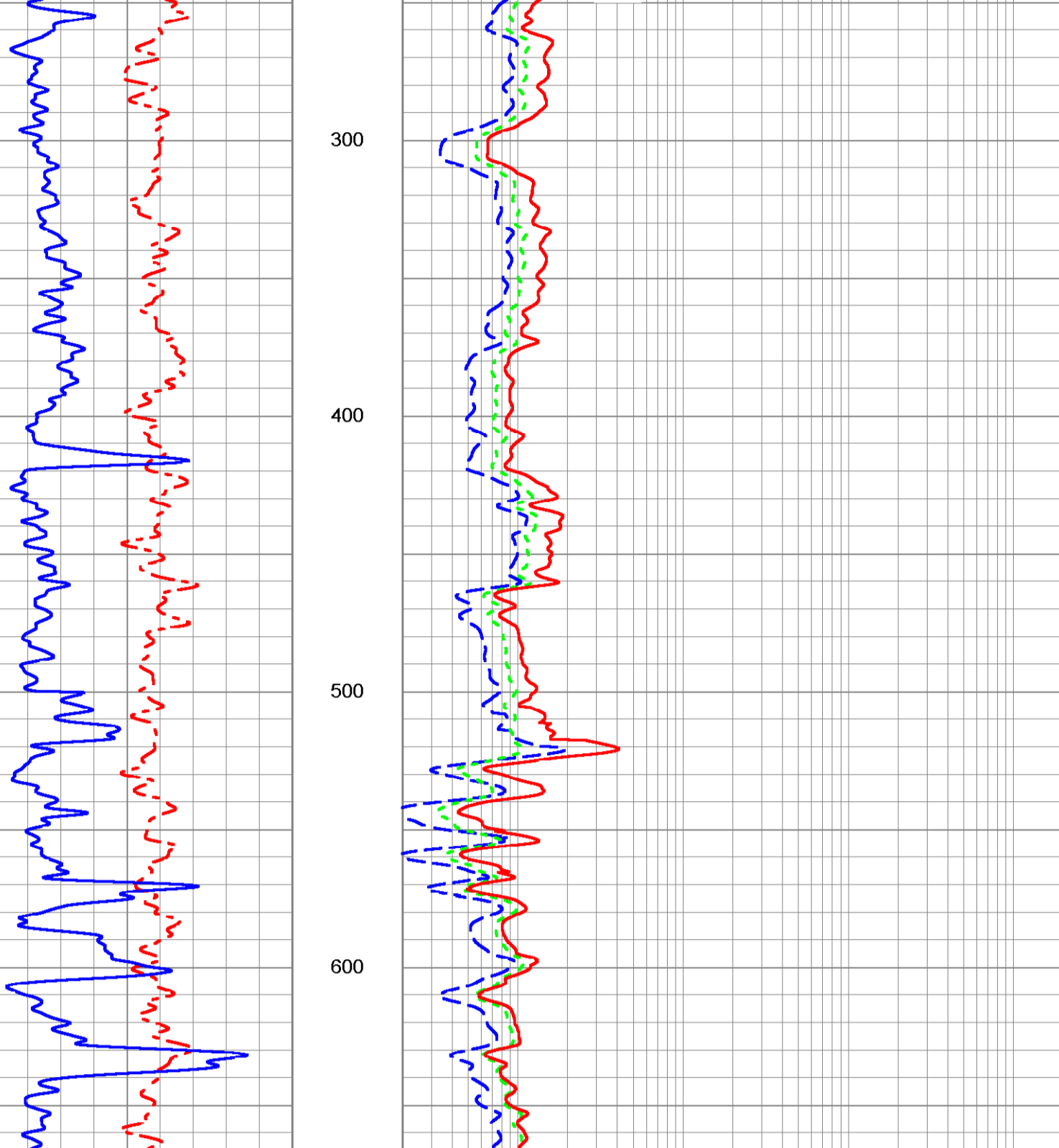
All interpretations are opinions based on inferences from electrical or other measurements and we cannot and do not guarantee the accuracy or correctness of any interpretation, and we shall not, except in the case of gross or willful negligence on our part, be liable or responsible for any loss, costs, damages, or expenses incurred or sustained by anyone resulting from any interpretation made by any of our officers, agents or employees. These interpretations are also subject to our general terms and conditions set out in our current Price Schedule.

Comments: Rm=4.641 ohm-m @ 81.4 degF

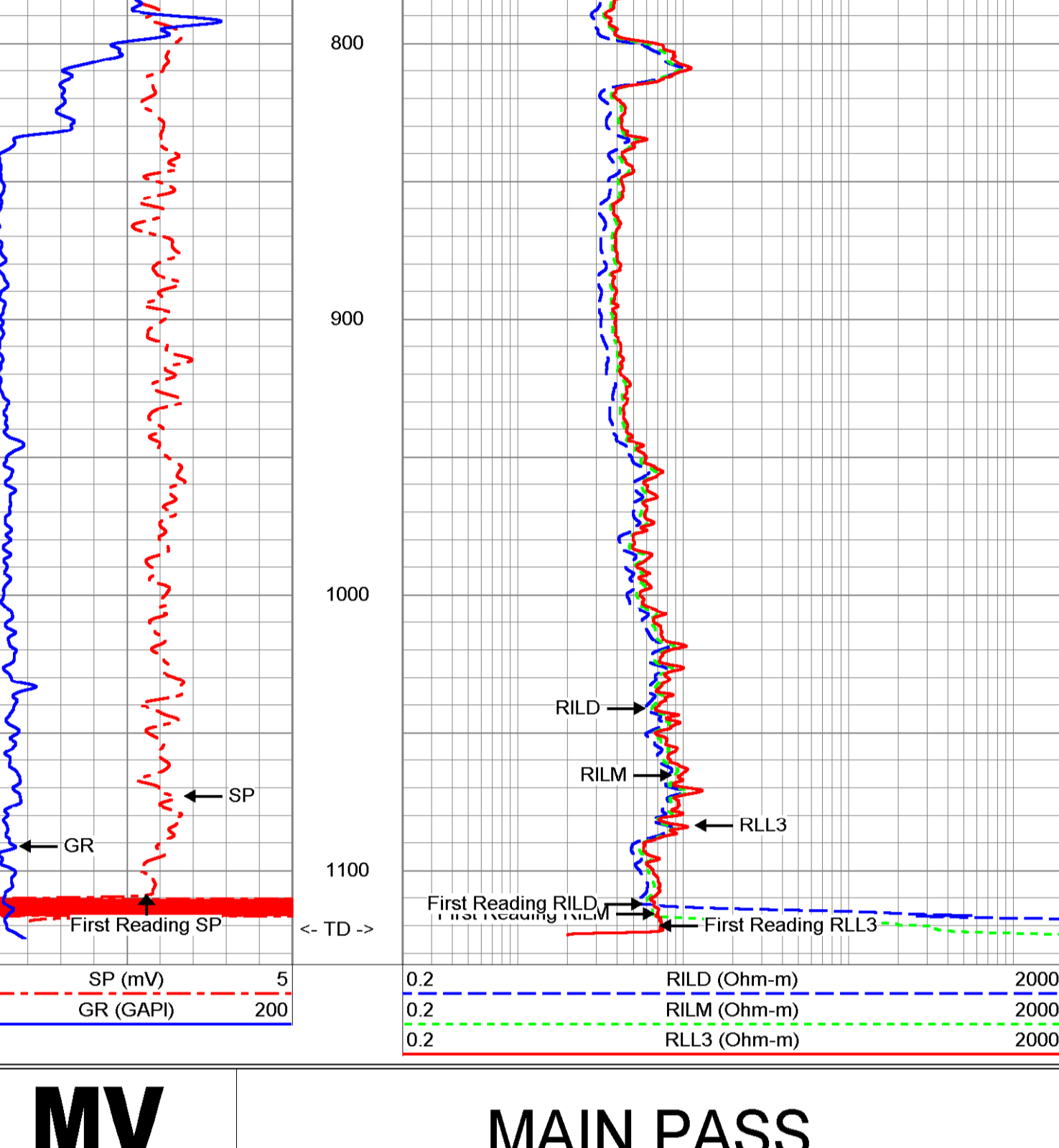
MAIN PASS



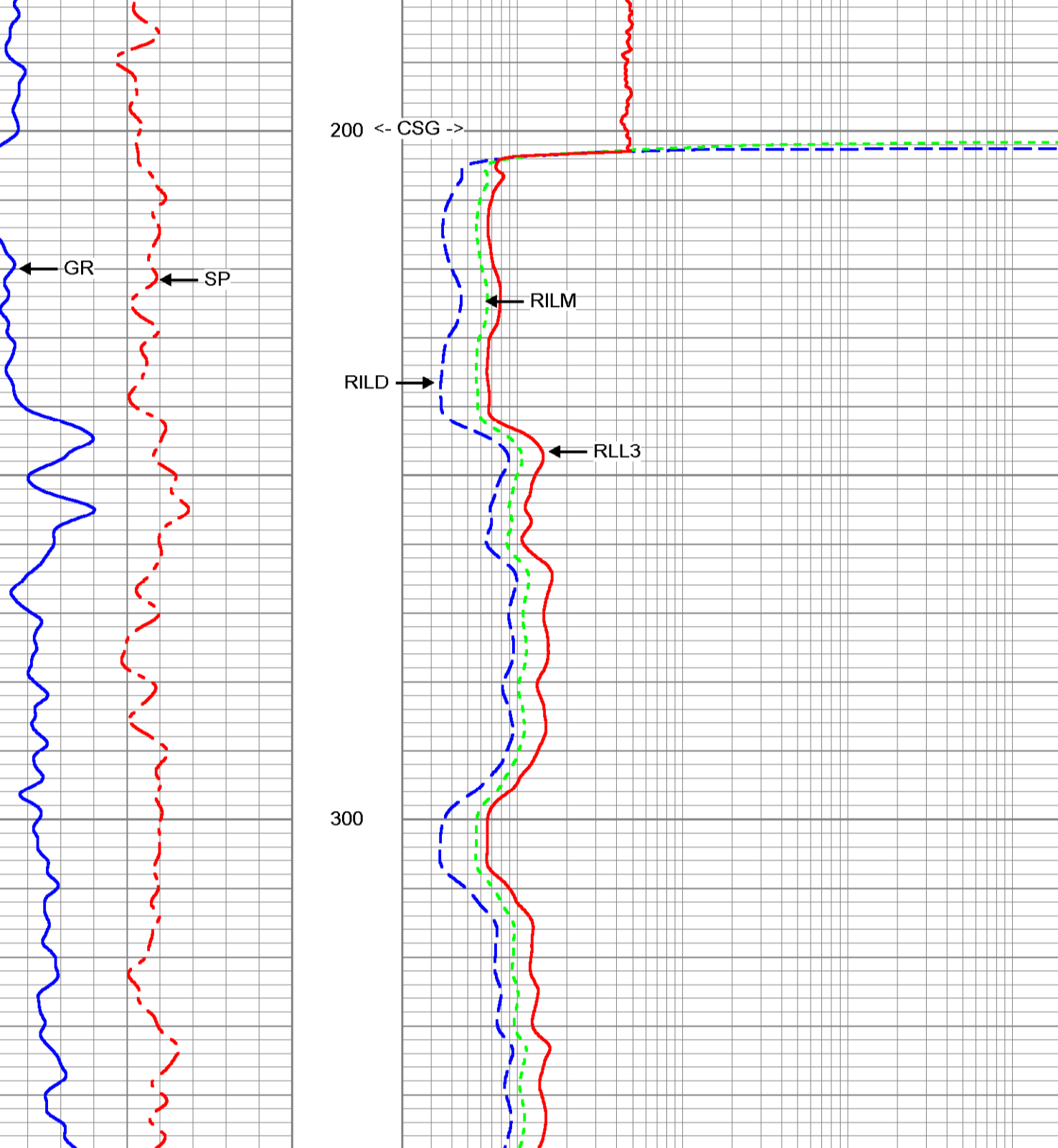
MAIN PASS



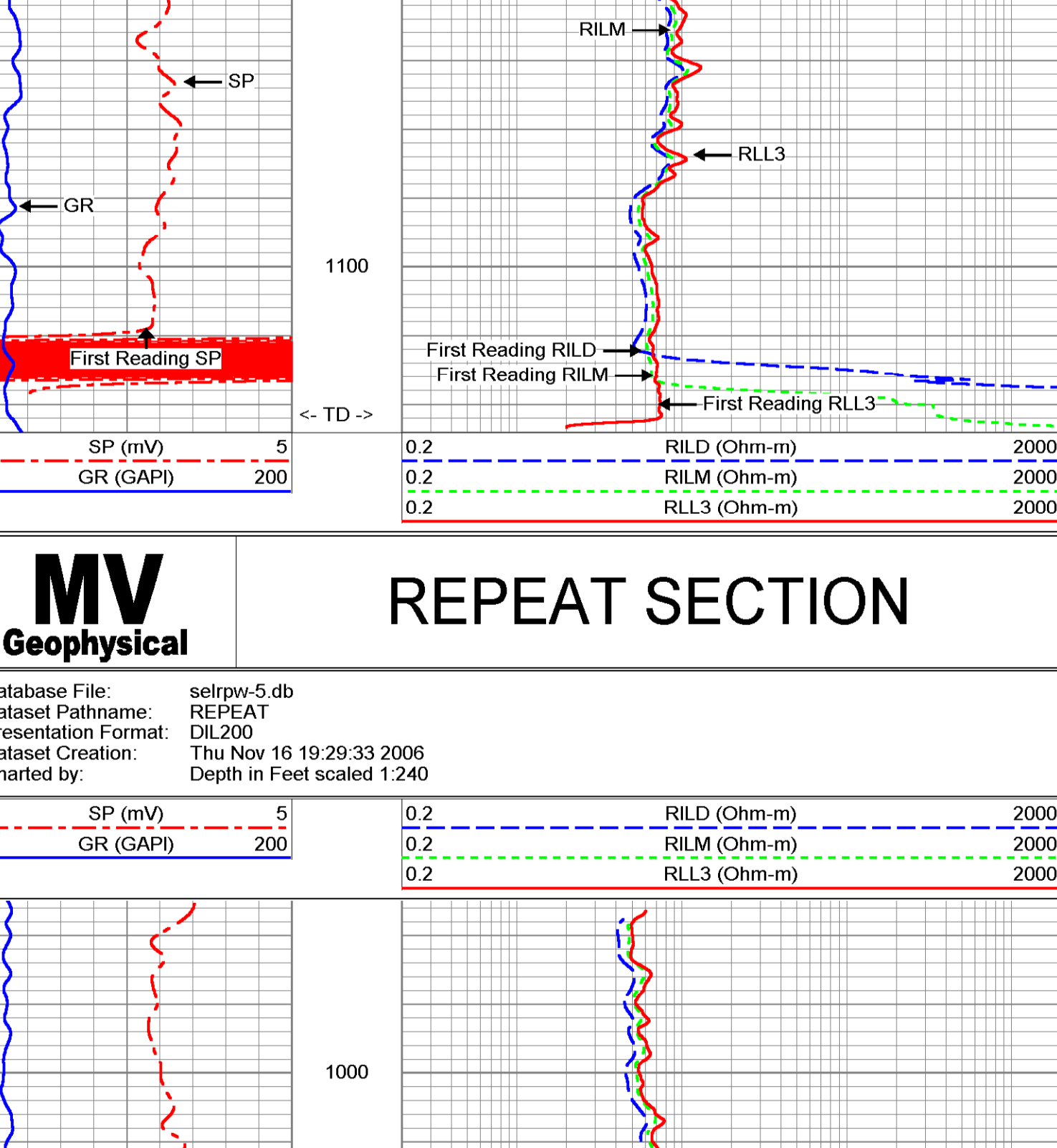
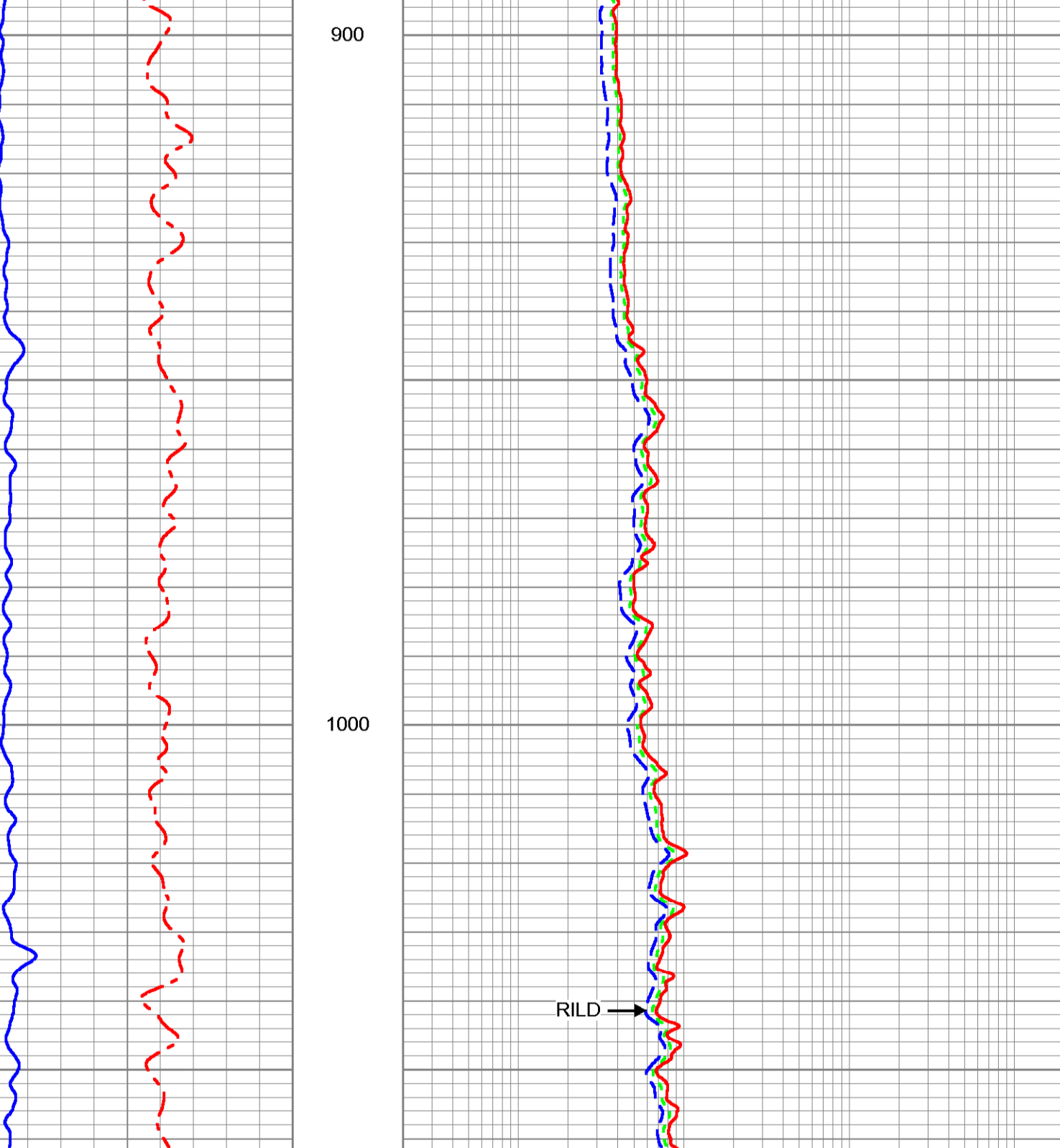
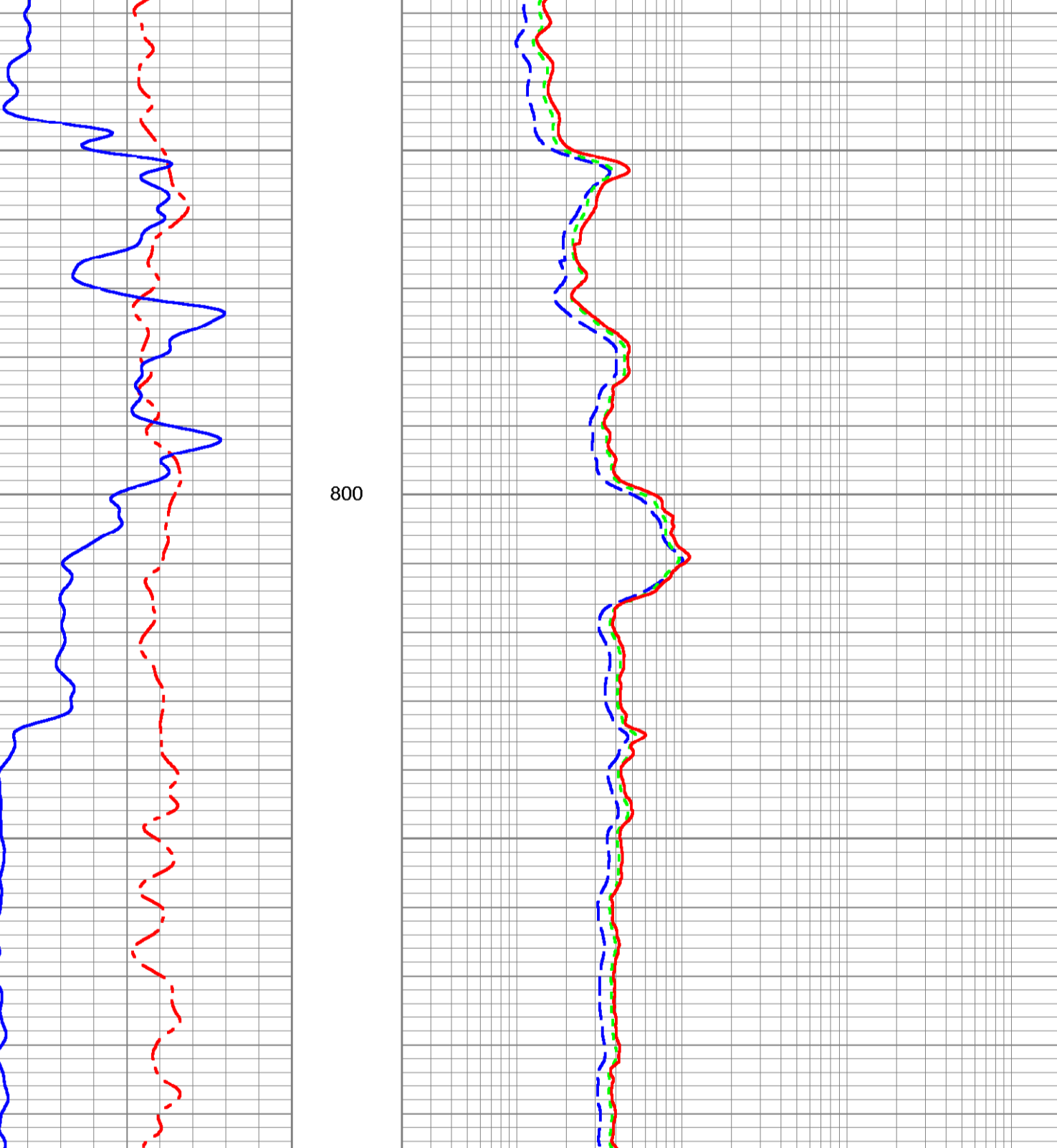
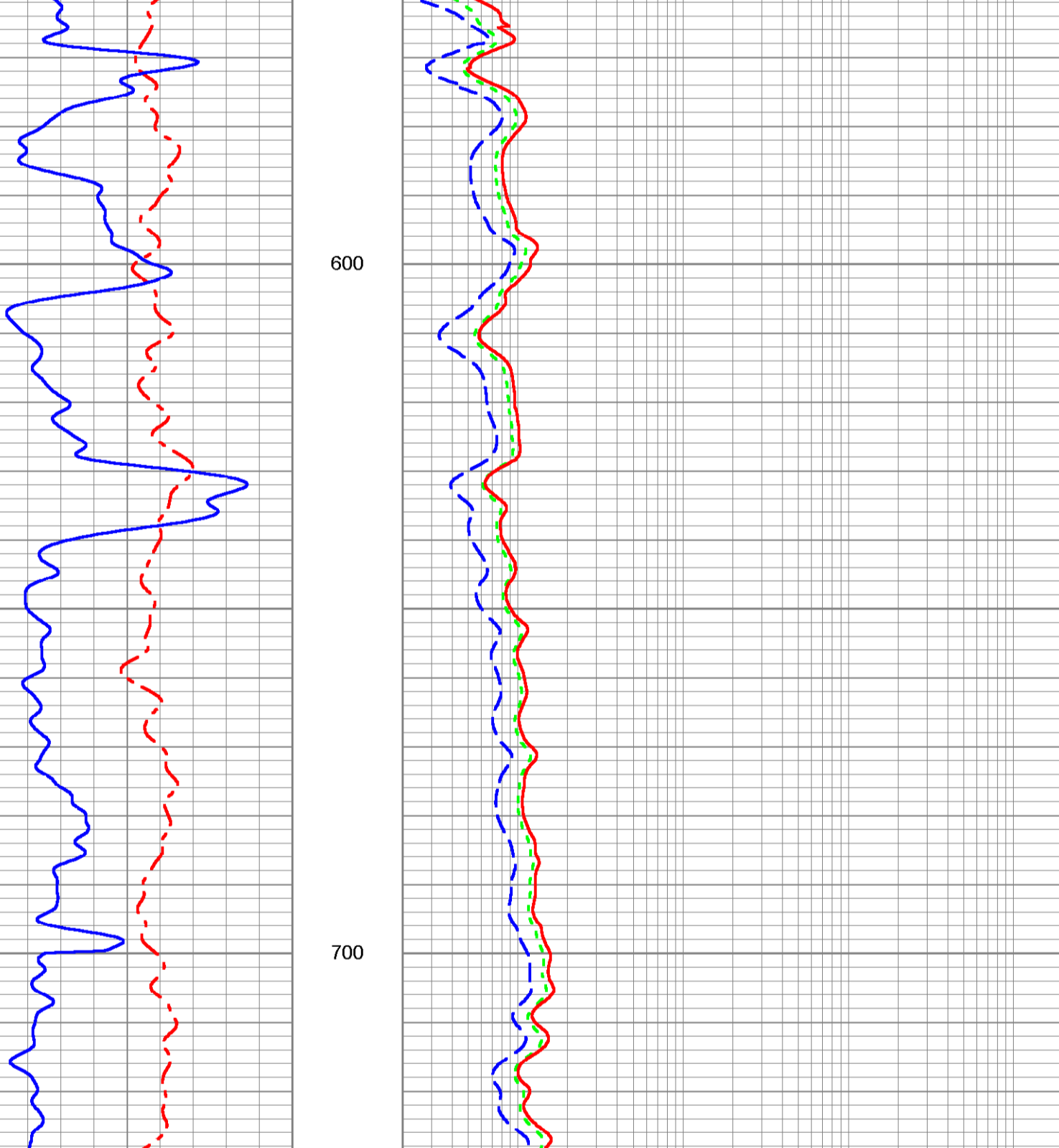
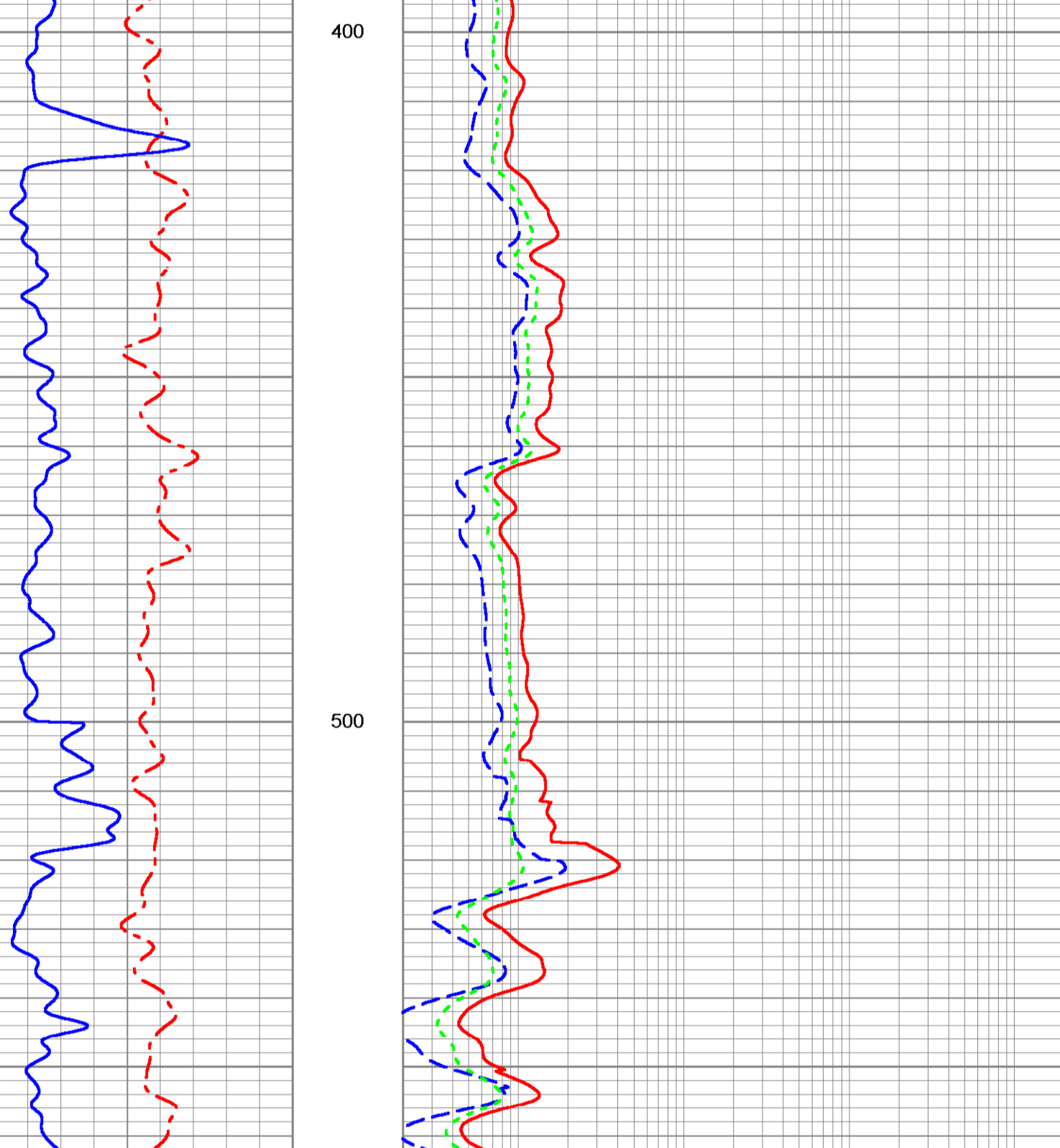
MAIN PASS



MAIN PASS



REPEAT SECTION



Company: Southeast Drilling Services, Inc.

Well: LR PW-5

Field: Pahokee-Belle Glades

County: Palm Beach

State/Prv: Florida

Location: Lakes Region Production Well Project Highway 715 (North of Belle Glade) Palm Beach County Water Utility Department

Other Services: DIL/BHC DHTV

Permanent Datum: Top of Casing Elevation

Log Measured From: Top of Casing

Drilling Measured From: Top of Casing

Date: 4-DEC-2006

Run Number: TMO

Depth Other: 1430'

Depth Logger: 1418'

Depth Interval: 1146'

Open Hole Size: 12.75"

Type Fluid: H2O

Density /Viscosity: na

Max. Recorded Temp: na

Estimated Cement Top: na

Time Well Ready on Bottom: 08:00 12/4/06

Time Logged on Bottom: 10:30 12/4/06

Location: MFL

Location Number: FTM

Recorded By: S. Miller

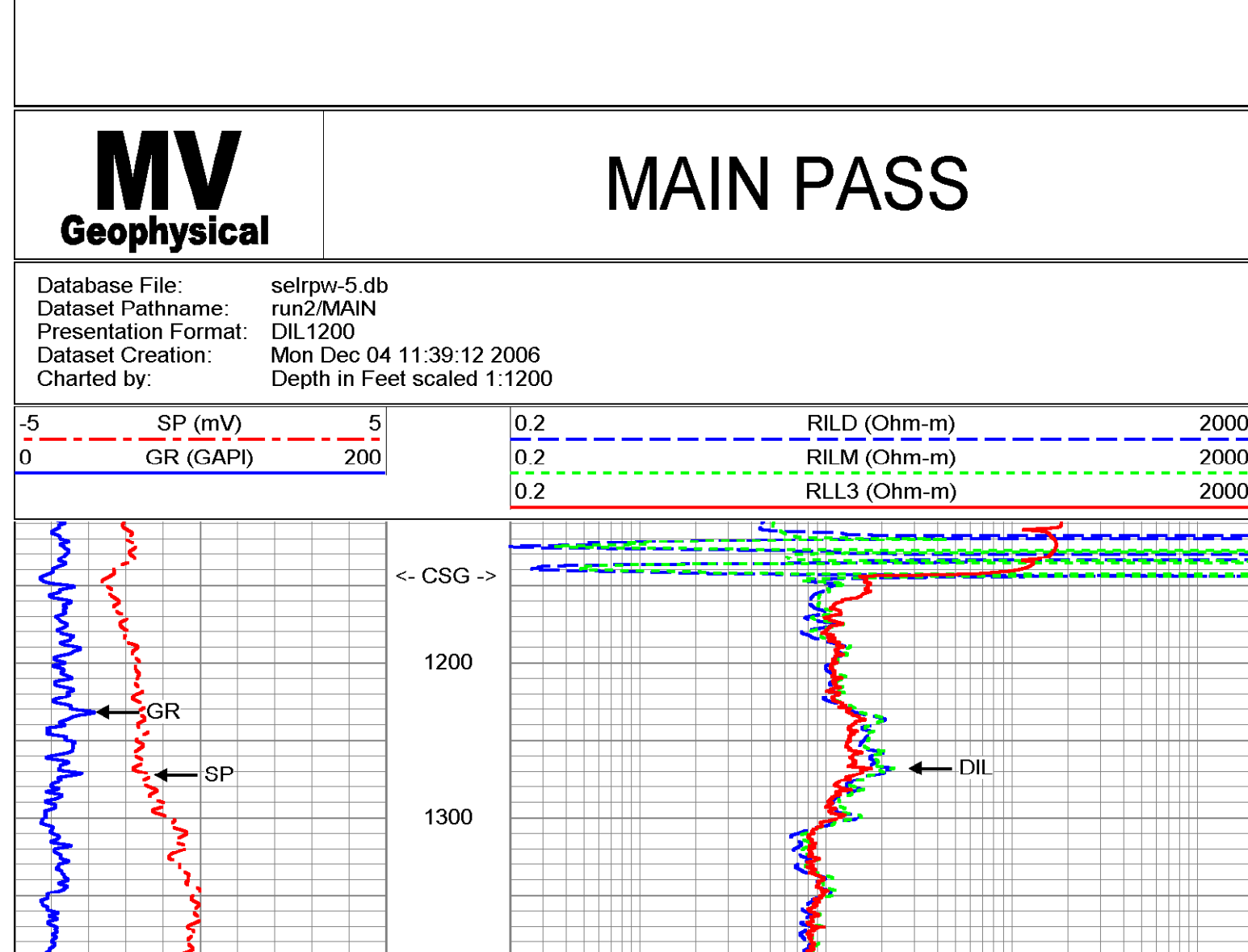
Witnessed By: T. Urm (P/O)

Recorded By: B. Garrison (SE)

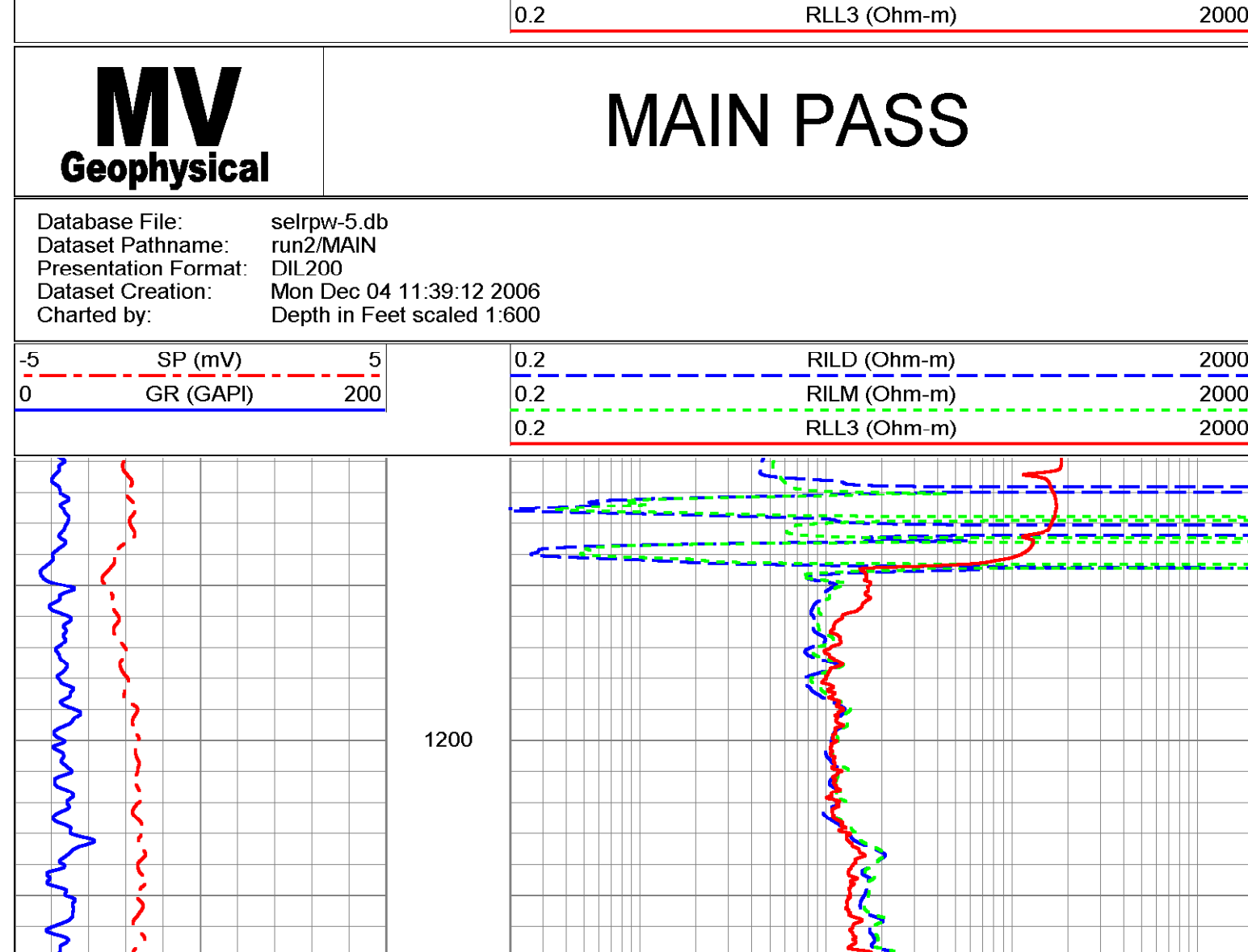
Witnessed By: T. Urm (P/O)

Comments: Rw=2.078 ohm-m @ 79.5 degF

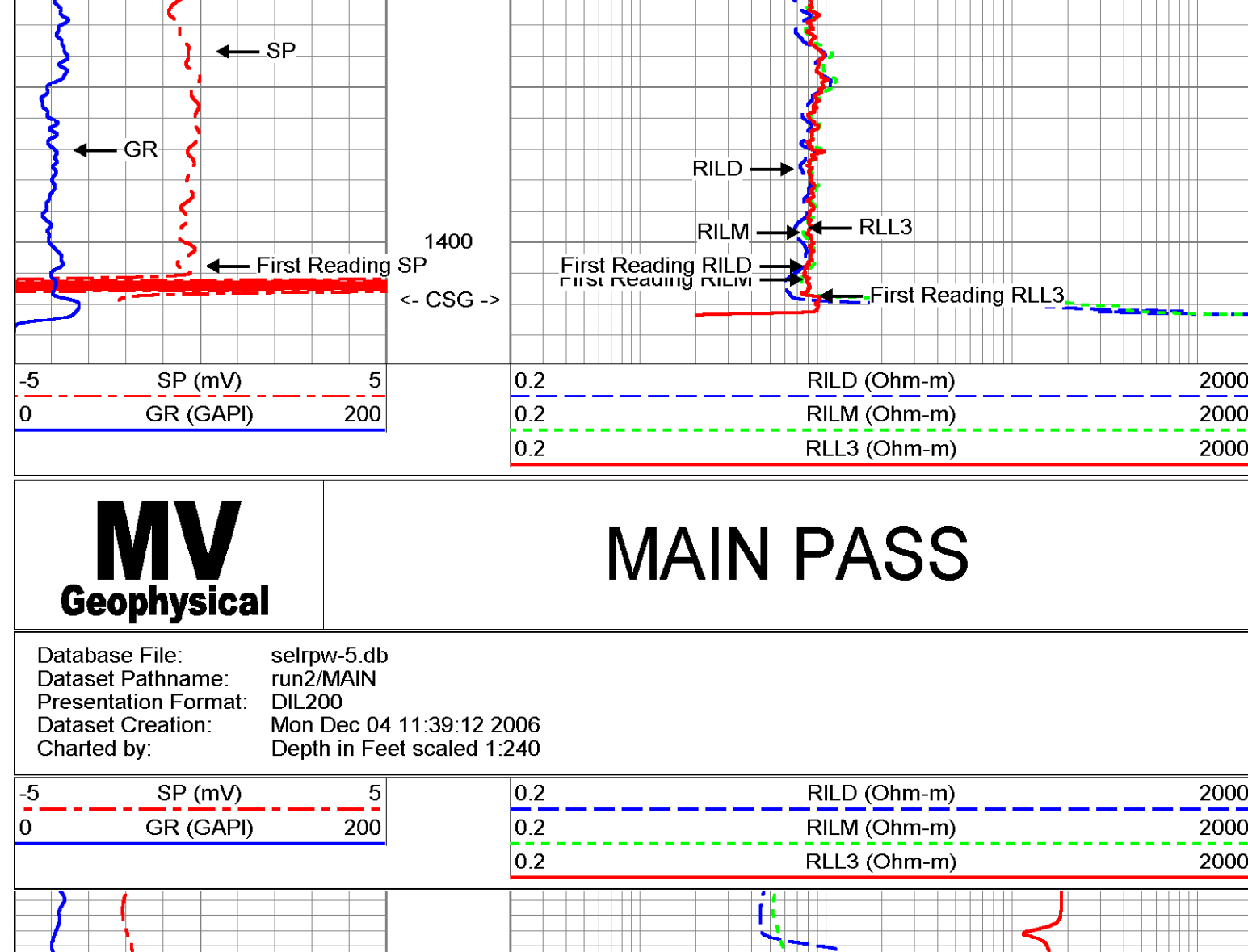
Database File: selrpw-5.db
Dataset Pathname: run2/MAIN
Presentation Format: DIL200
Dataset Creation: Mon Dec 04 11:39:12 2006
Charted by: Depth in Feet scaled 1:1200



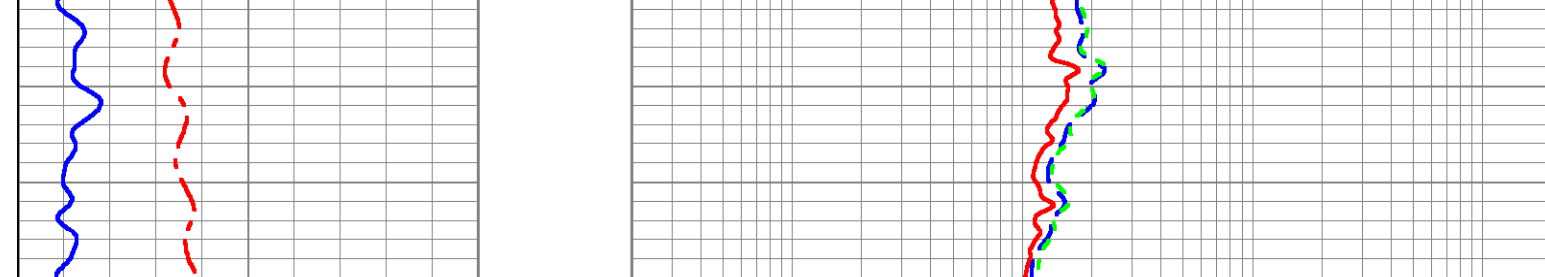
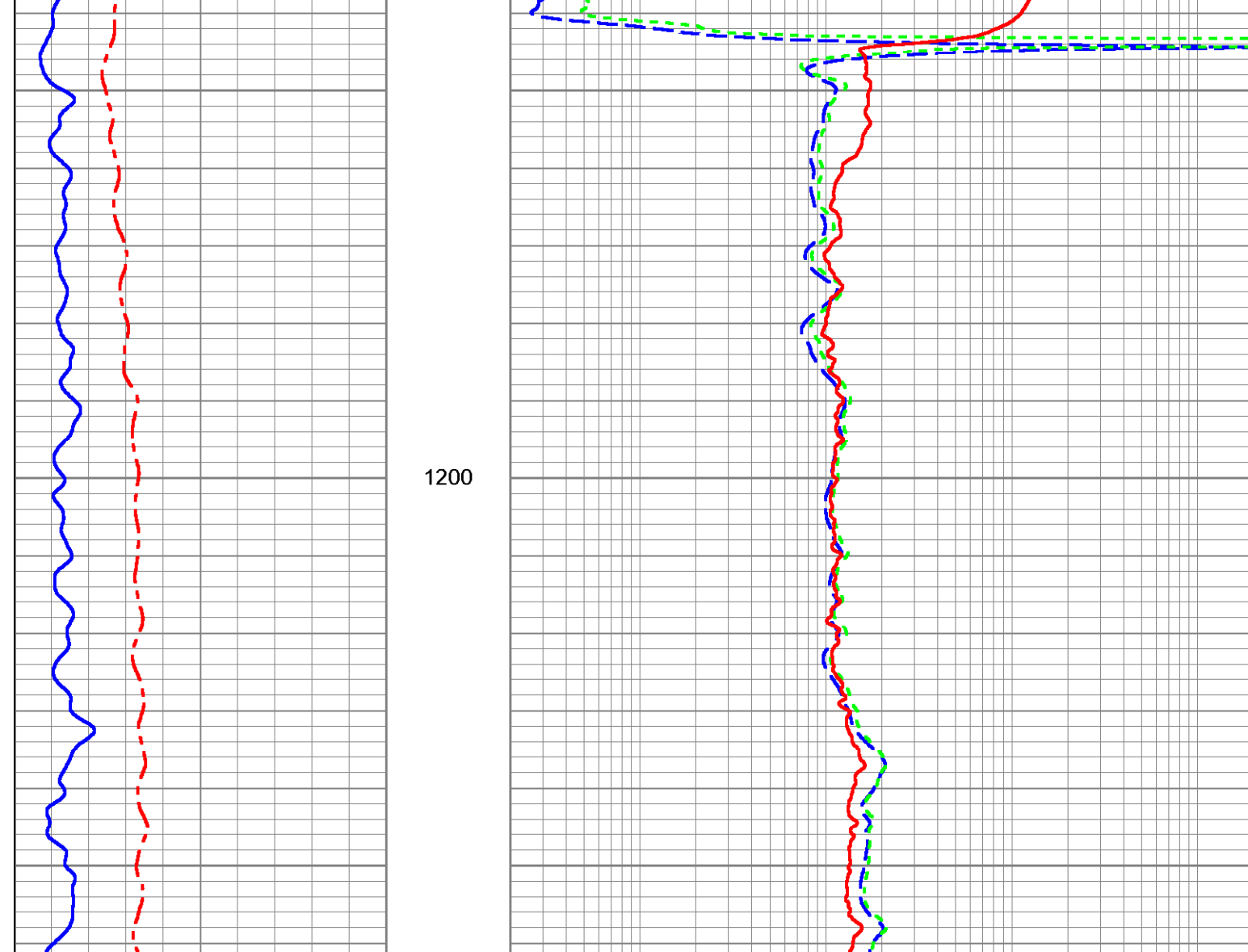
Database File: selrpw-5.db
Dataset Pathname: run2/MAIN
Presentation Format: DIL200
Dataset Creation: Mon Dec 04 11:39:12 2006
Charted by: Depth in Feet scaled 1:600



Database File: selrpw-5.db
Dataset Pathname: run2/MAIN
Presentation Format: DIL200
Dataset Creation: Mon Dec 04 11:39:12 2006
Charted by: Depth in Feet scaled 1:240



Database File: selrpw-5.db
Dataset Pathname: run2/REPEAT
Presentation Format: DIL200
Dataset Creation: Mon Dec 04 11:28:45 2006
Charted by: Depth in Feet scaled 1:240



DIL-R (5390)
345.00 lb 4.00 in OD 20.90 ft

Dataset: run1/pass3
Total Length: 20.90 ft
Total Weight: 345.00 lb
O.D.: 4.00 in

Company: **SE Drilling Services, Inc.**
Well: **LR PW-5**
Field: **Pahokee-Belle Glades**
County: **Palm Beach**
State/Priv: **Florida**

Location: **Lakes Region Production Well Project
Highway 715 (North of Belle Glade)**
County: **Palm Beach**
Water/Utility Department: **Palm Beach County**

Company: **Southeast Drilling Services, Inc.**
Well: **LR PW-5**
Field: **Pahokee-Belle Glades**
County: **Palm Beach**
State/Priv: **Florida**

Date: **11/30/2006**
Run Number: **11467**
Well: **LR PW-5**
Datum: **Top of Casing**
Bottom Logged Interval: **11467 - 11495**
Open Hole Size: **12.75"**
Type of Run: **R.O.C.**
Type of Log: **DT**
Type of Log: **DT**
Max Recorded Temp.: **na**
Estimated Cement Top: **na**

Time Well Ready: **08:00 12/14/06**
Time Logged on Bottom: **11:30 12/14/06**
Equipment Number: **MASS1**
Recorded By: **S.Miller**
Witnessed By: **T.Janni (P.G.)**
Borehole Record:
Run Number: **2575**
TWO: **12.75"**
TWO: **11.467"**
Size: **14.8 908R**
Casing Record:
Surface String: **25"**
Production String: **17.4" PVC**
Production String: **13.8" ID**

All interpretations are opinions based on inferences from electrical or other measurements and we cannot and do not guarantee the accuracy or correctness of any interpretation, and we shall not, except in the case of gross or willful negligence on our part, be liable or responsible for any loss, costs, damages, or expenses incurred or sustained by anyone resulting from any interpretation made by any of our officers, agents or employees. These interpretations are also subject to our general terms and conditions set out in our current Price Schedule.

Comments

Sonic Porosity was run on a Limestone Matrix (=47.5)

