

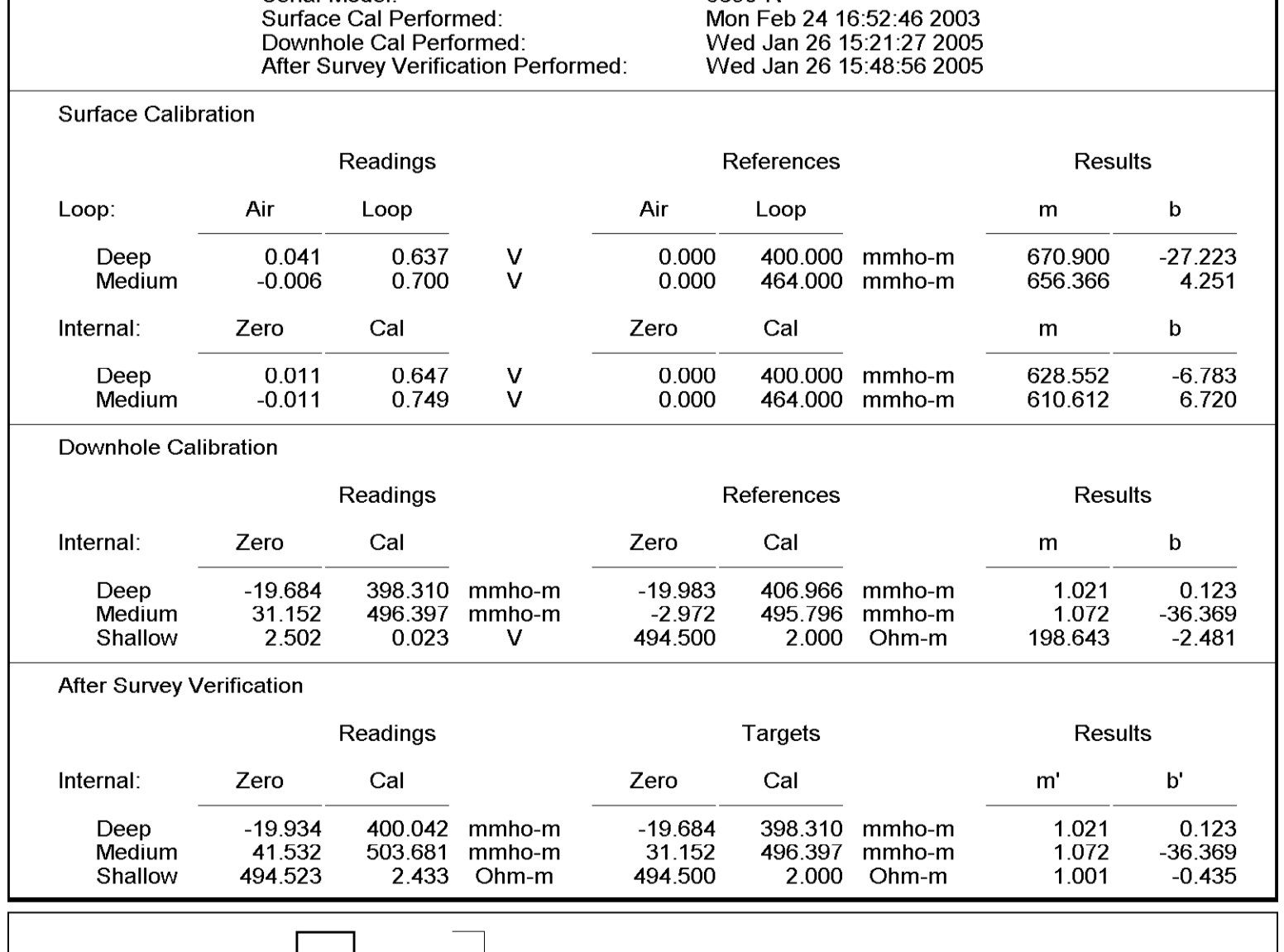
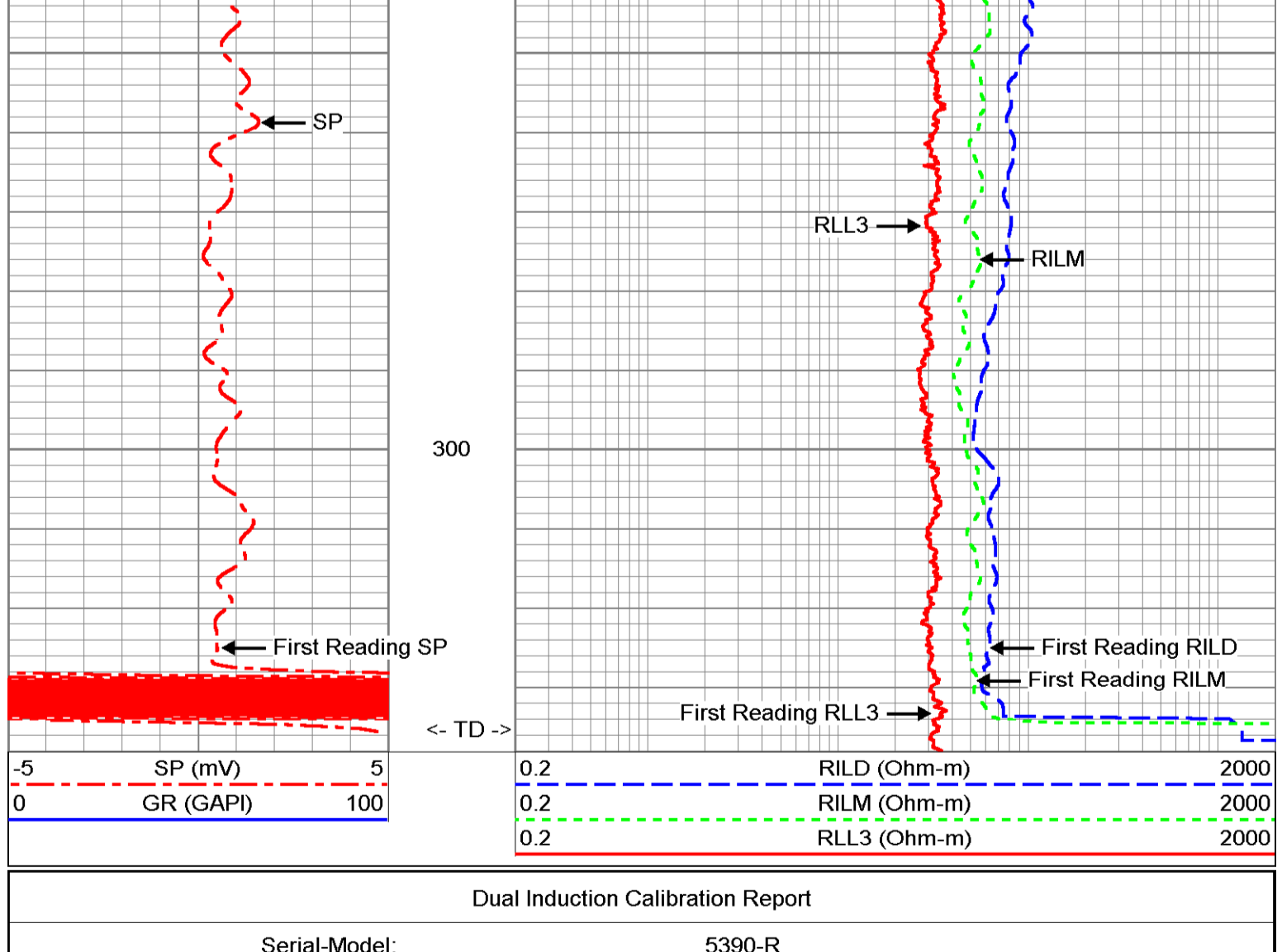
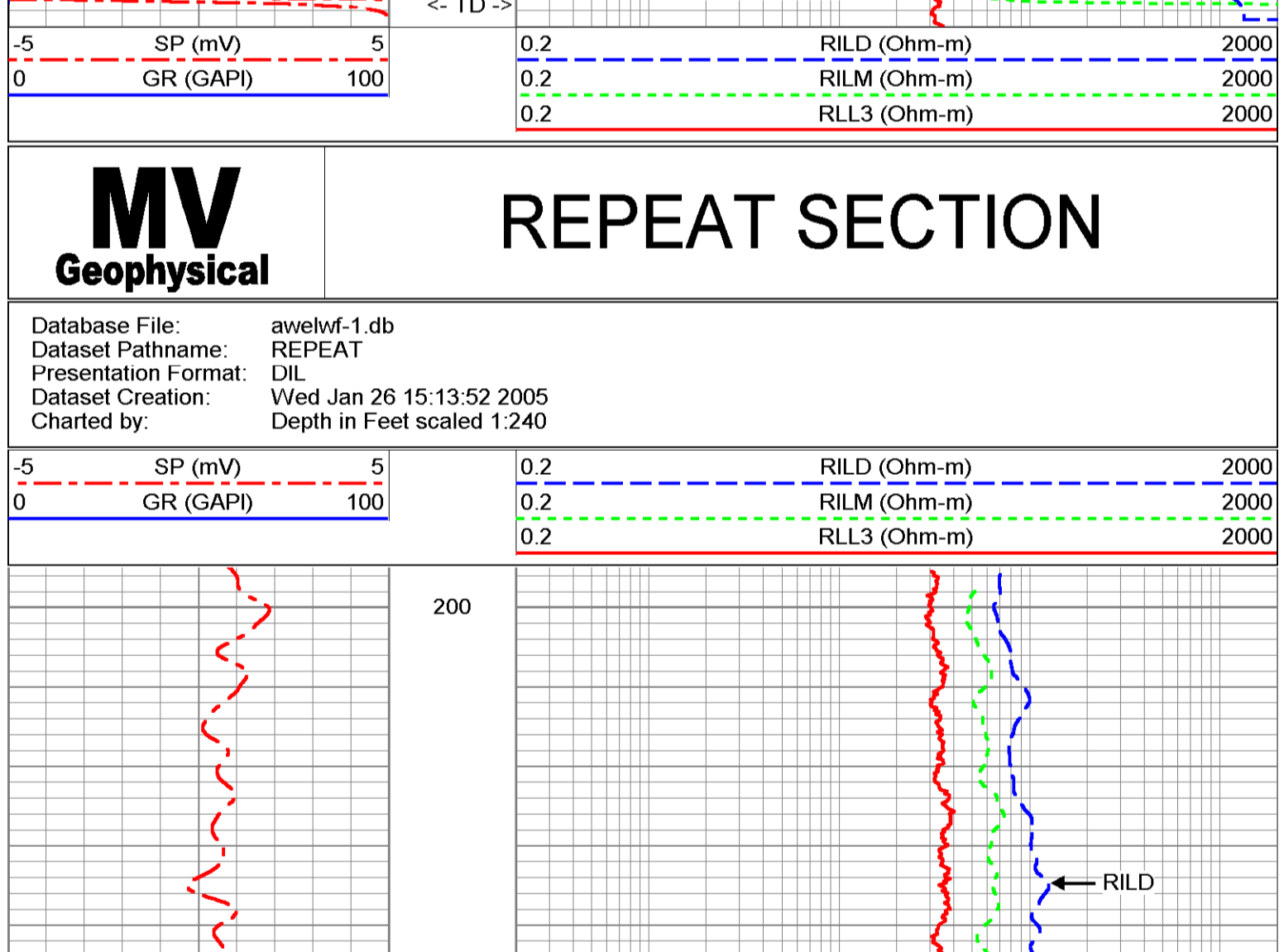
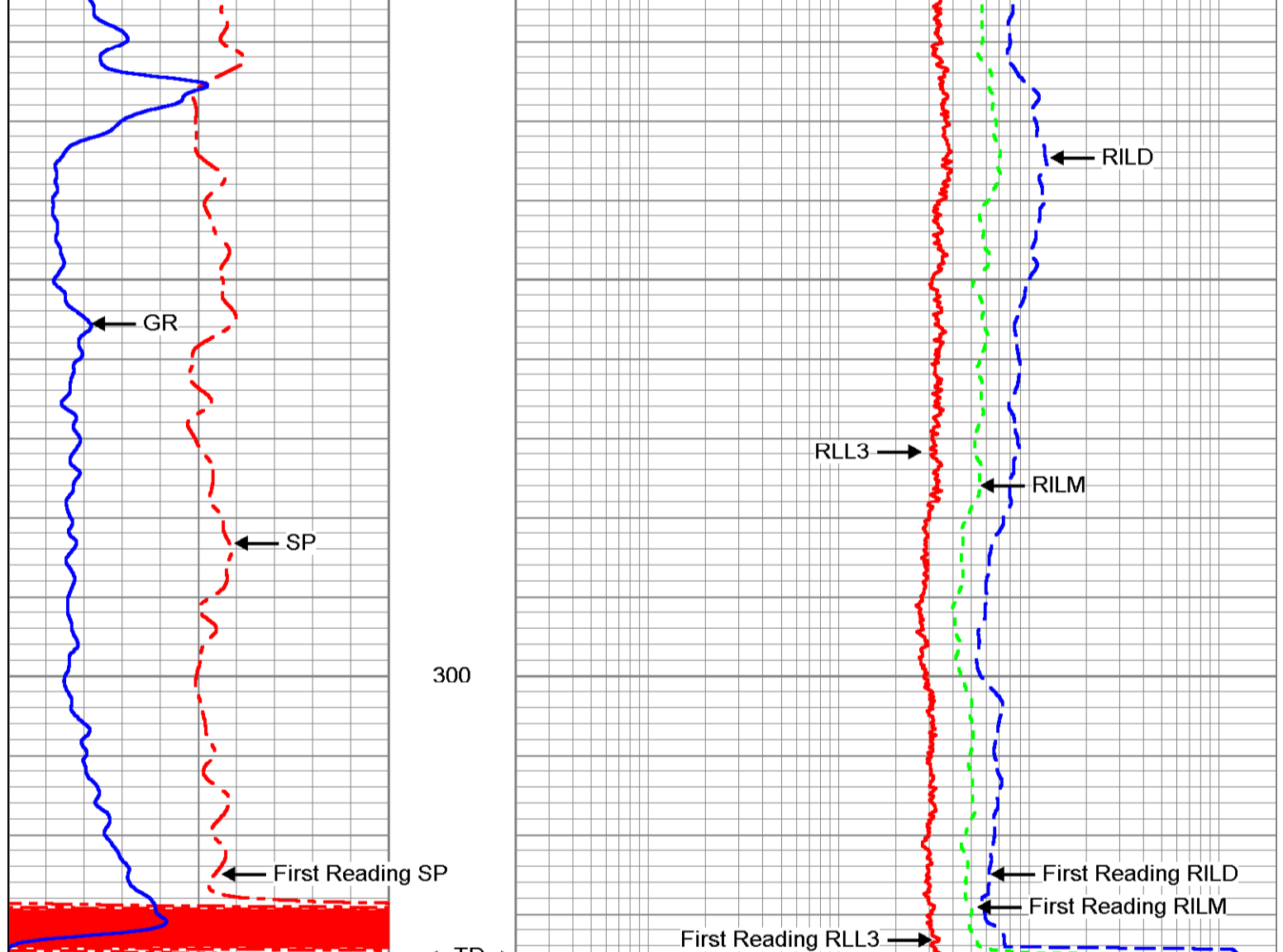
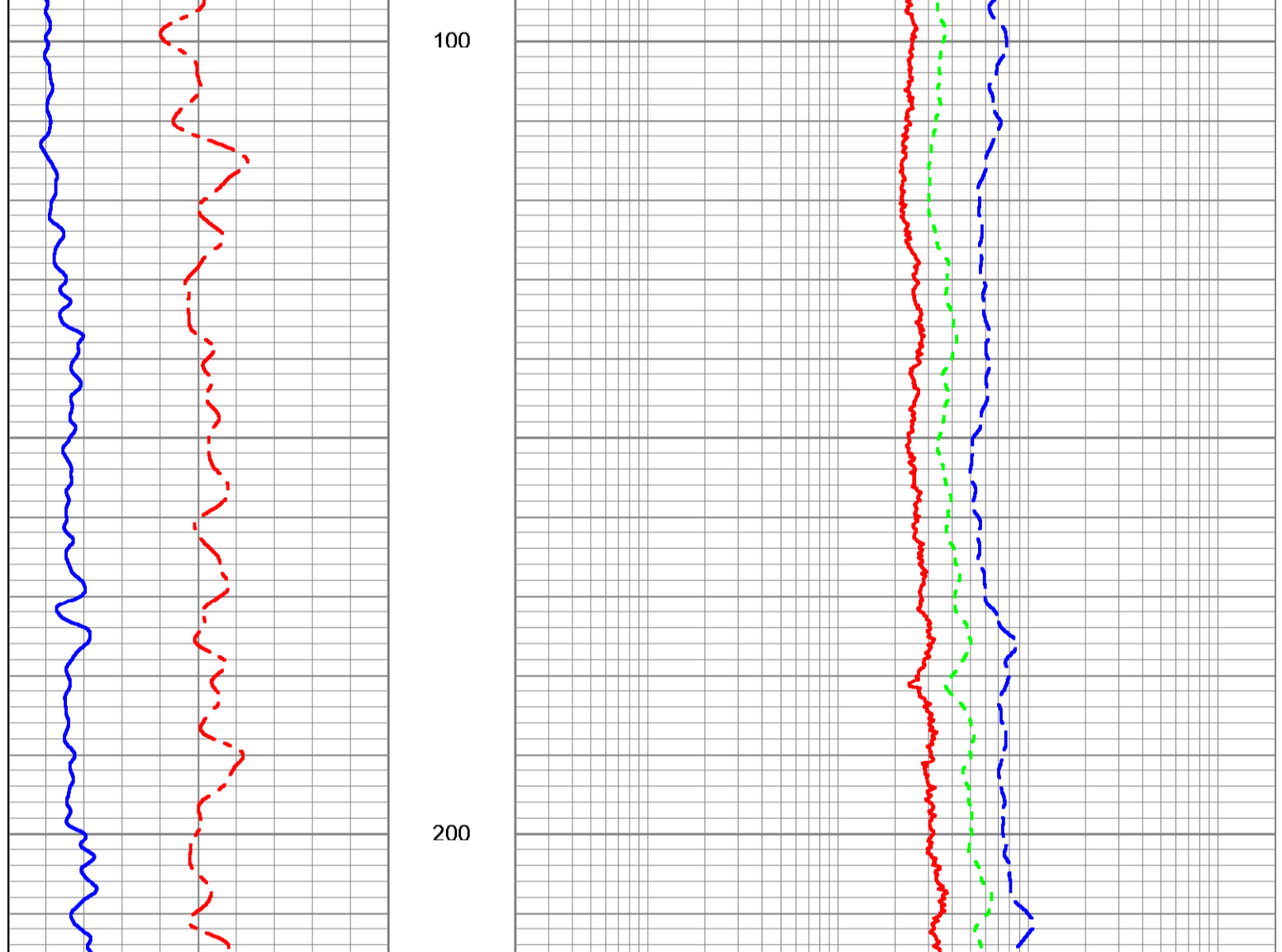
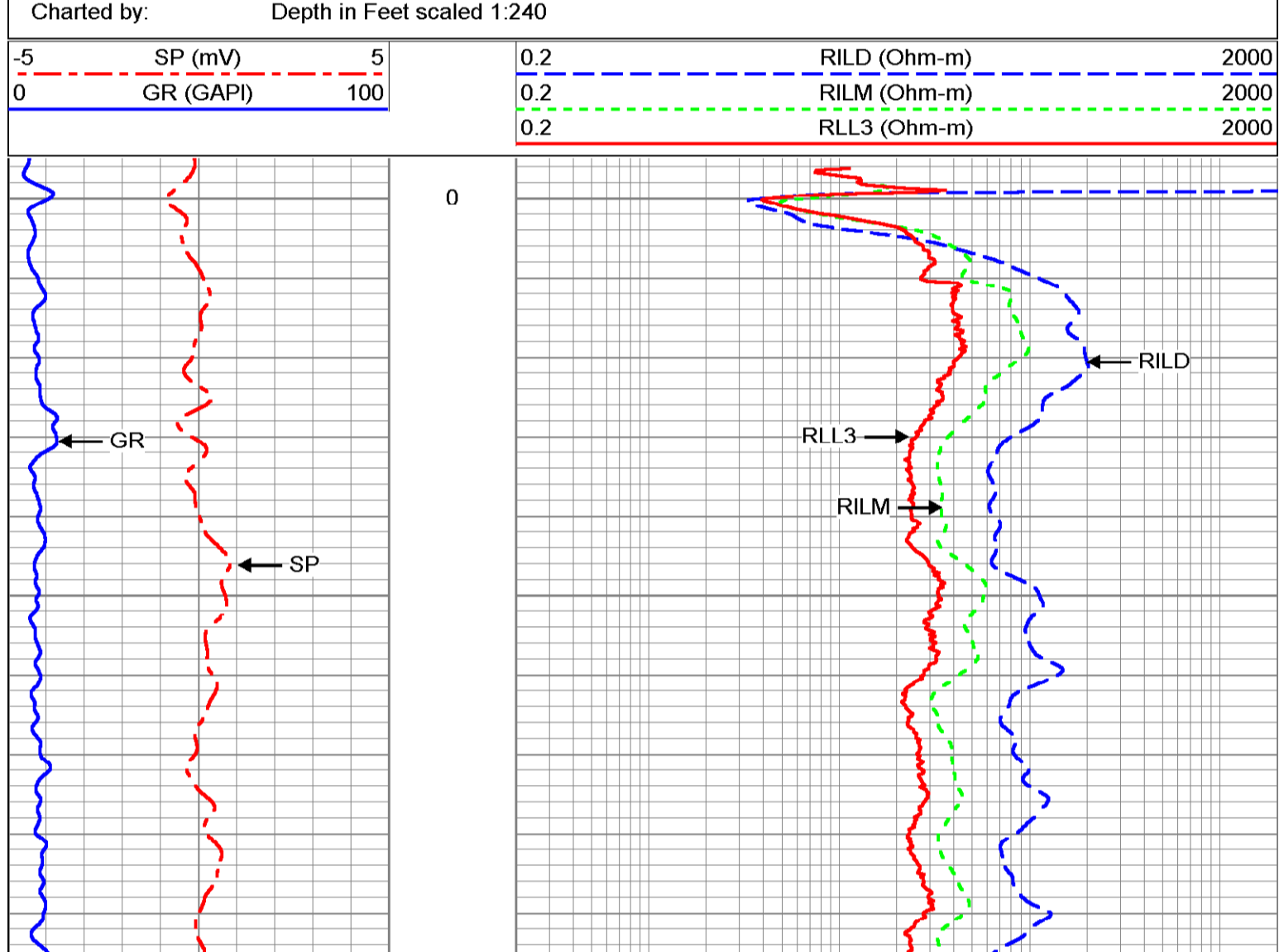
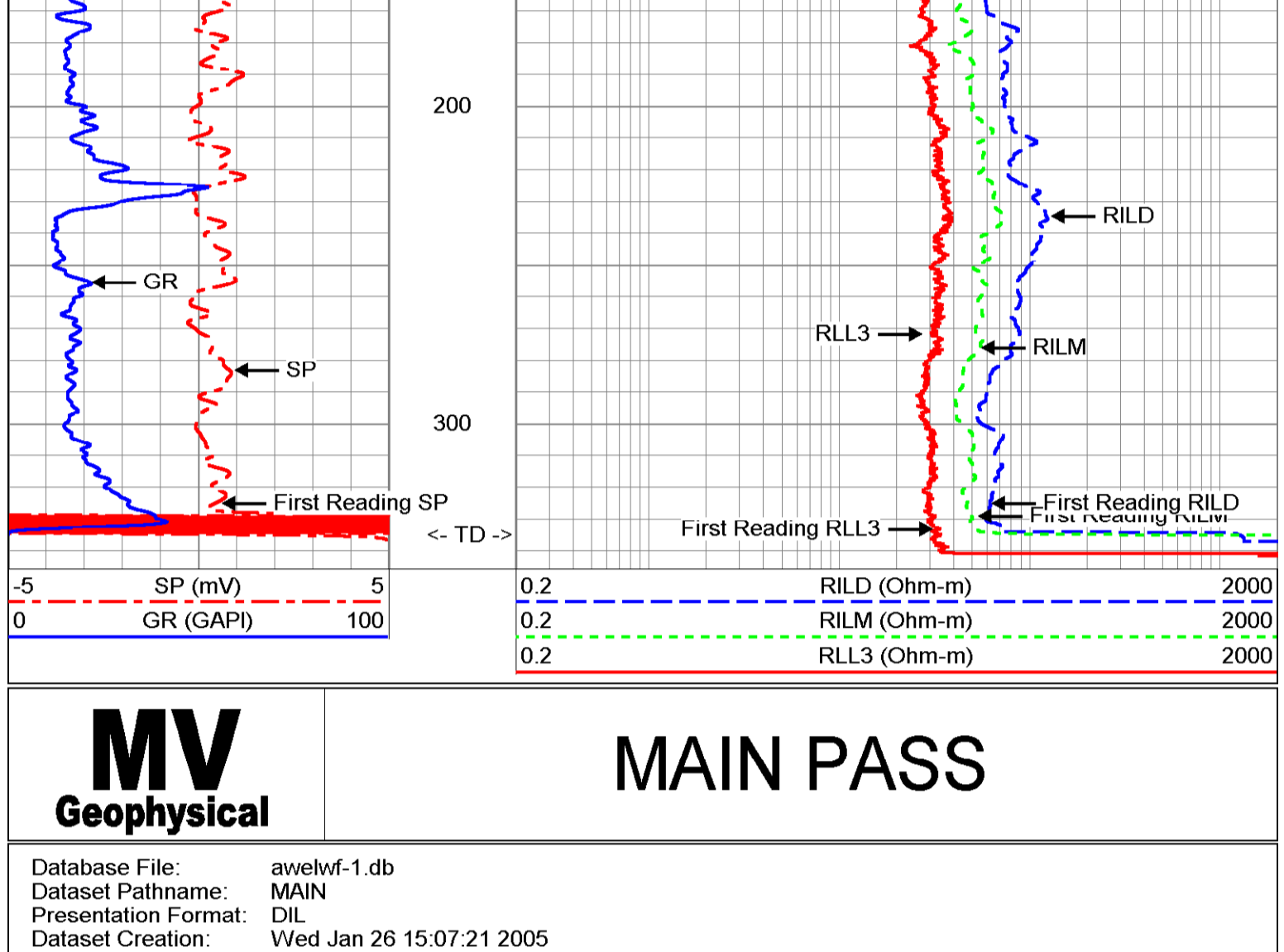
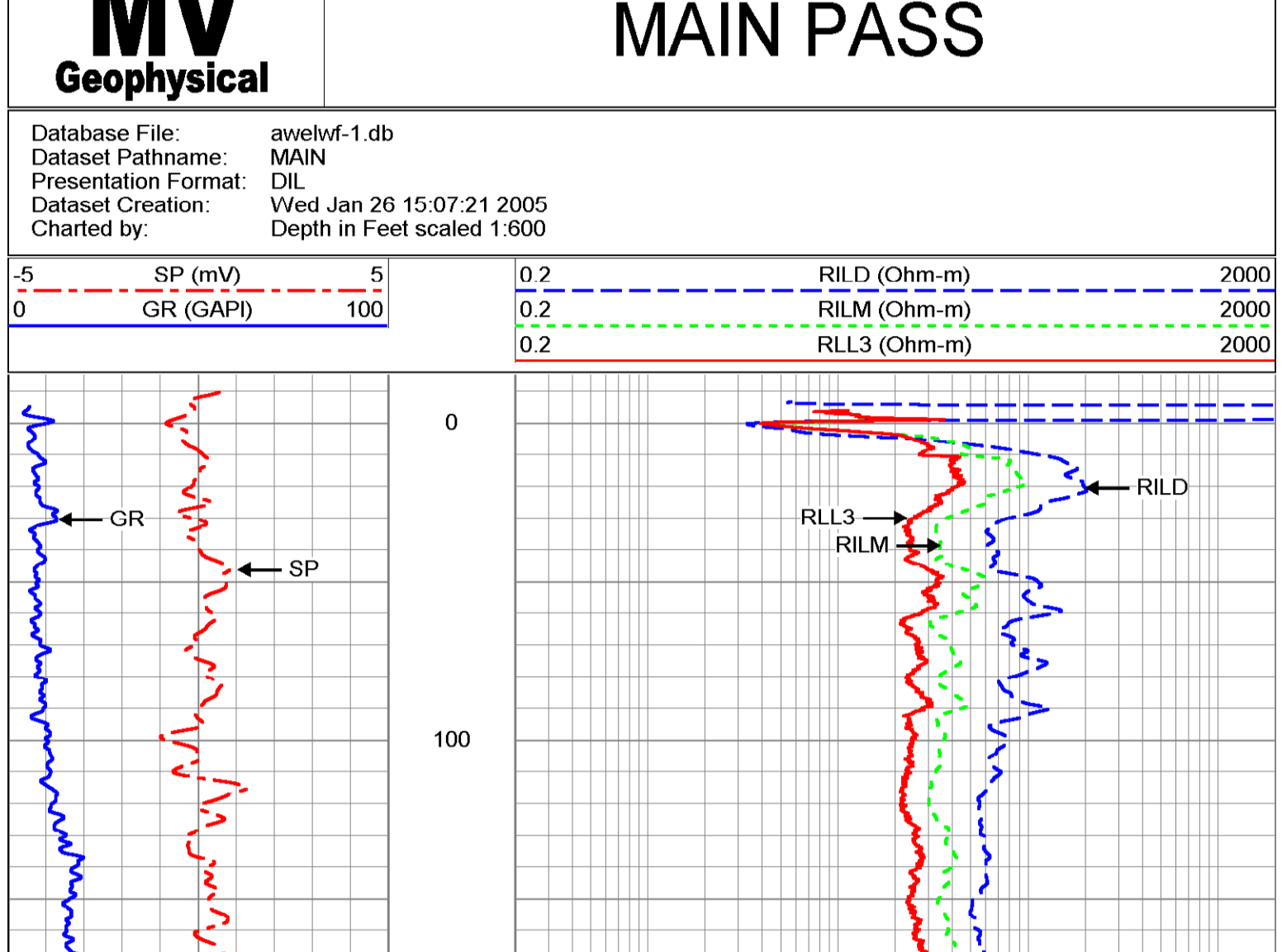
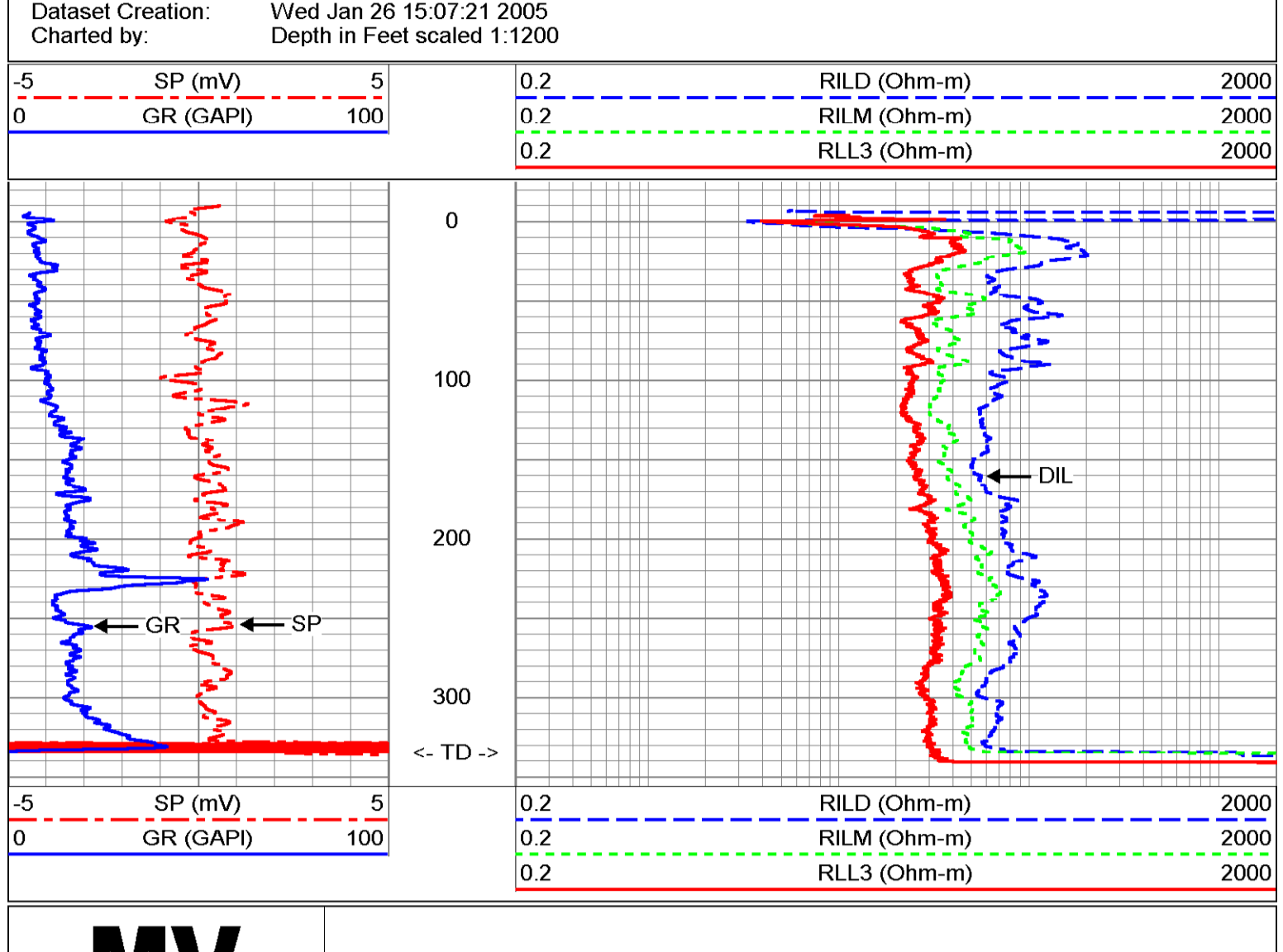
<<< Fold Here >>>

All interpretations are opinions based on inferences from electrical or other measurements and we cannot and do not guarantee the accuracy or correctness of any interpretation, and we shall not, except in the case of gross or willful negligence on our part, be liable or responsible for any loss, costs, damages, or expenses incurred or sustained by anyone resulting from any interpretation made by any of our officers, agents or employees. These interpretations are also subject to our general terms and conditions set out in our current Price Schedule.

Comments

Rm=6.766 ohm-m @ 83.7 degF

Drilling Contractor: All Webb Enterprises, Inc.



Dual Induction Calibration Report

Serial-Model:	5390-R	
Surface Cal Performed:	Mon Feb 24 16:52:46 2003	
Downhole Cal Performed:	Wed Jan 26 15:21:27 2005	
After Survey Verification Performed:	Wed Jan 26 15:48:56 2005	

Surface Calibration					
Loop:	Readings		References		Results
	Air	Loop	Air	Loop	m b
Deep	0.041	0.637	0.000	400.000	mmho-m 670.900 -27.223
Medium	-0.006	0.700	0.000	464.000	mmho-m 656.366 4.251
Internal:		Zero	Cal	m b	
Deep	0.011	0.647	0.000	400.000	mmho-m 628.552 -6.783
Medium	-0.011	0.749	0.000	464.000	mmho-m 610.612 6.720

Downhole Calibration					
Internal:	Readings		References		Results
	Zero	Cal	Zero	Cal	m b
Deep	-19.684	398.310	-19.983	406.966	mmho-m 1.072 0.123
Medium	31.152	496.397	-2.972	495.796	mmho-m 1.072 -36.369
Shallow	2.502	0.023	494.500	2.000	Ohm-m 198.643 -2.481

After Survey Verification					
Internal:	Readings		Targets		Results
	Zero	Cal	Zero	Cal	m' b'
Deep	-19.934	400.042	-19.684	398.310	mmho-m 1.021 0.123
Medium	41.532	503.681	31.152	496.397	mmho-m 1.072 -36.369
Shallow	494.523	2.433	494.500	2.000	Ohm-m 1.001 -0.435

