

Identification\_Information:  
Citation:

**Mike J. Bartholomew**  
**Biscayne Engineering**

Citation\_Information:  
Originator: Mike J. Bartholomew  
Publication\_Date: Unpublished material  
Publication\_Time: Unknown  
Title: Martin County Tape Down Wells (M1039)  
Edition: 1.0  
Series\_Information:  
Publication\_Information:  
Larger\_Work\_Citation:  
Citation\_Information:  
Series\_Information:  
Publication\_Information:

**Purpose**

Description:  
Abstract: Tequesta Park, Florida  
Purpose:  
To establish elevations on a disc set adjacent to the well and provide the results in NAVD-88 format in accordance with the CERP height modernization program  
Supplemental\_Information: Access to site is gained via entrance to public park

**Survey Date**

Time\_Period\_of\_Content:  
Time\_Period\_Information:  
Single\_Date/Time:  
Range\_of\_Dates/Times:  
Beginning\_Date: 20050801  
Ending\_Date: 20050901  
Multiple\_Dates/Times:  
Currentness\_Reference: Date and Time Range of Field/Office Work

Status:  
Progress: Complete  
Maintenance\_and\_Update\_Frequency: Unknown

Spatial\_Domain:  
Bounding\_Coordinates:  
West\_Bounding\_Coordinate: -080°05' 27"  
East\_Bounding\_Coordinate: -080°05' 27"  
North\_Bounding\_Coordinate: +26°58' 23"  
South\_Bounding\_Coordinate: +26°58' 23"

Keywords:  
Theme:  
Theme\_Keyword\_Thesaurus: None  
Theme\_Keyword: Well Site  
Theme\_Keyword: MARTIN  
Theme\_Keyword: M1039

Place:  
Place\_Keyword\_Thesaurus: None  
Place\_Keyword: Well Site  
Place\_Keyword: Martin County, Florida  
Place\_Keyword: Tequesta Park  
Place\_Keyword: Sec. 19, Twp. 40S, Rge 43E

Stratum:  
Temporal:  
Access\_Constraints: Access to site is gained via entrance to public park  
Use\_Constraints: None  
Point\_of\_Contact:

**Elvie Ebanks**  
**SFWMD**  
**DISTRICT**

Contact\_Information:  
Contact\_Person\_Primary:  
Contact\_Person: Elvie Ebanks  
Contact\_Organization: South Florida Water Management  
  
Contact\_Organization\_Primary:  
Contact\_Position: Project Manager  
Contact\_Address:  
Address\_Type: mailing and physical address  
Address: 3301 Gun Club Road  
City: West Palm Beach  
State\_or\_Province: FL  
Postal\_Code: 33406  
Country: USA

M1039.gen

Contact\_Voice\_Telephone: (561) 753-2400 x4717

Contact\_Facsimile\_Telephone: (561) 791-4093

Security\_Information:

Cross\_Reference:

Citation\_Information:

Series\_Information:

Publication\_Information:

Data\_Quality\_Information:

Attribute\_Accuracy:

Attribute\_Accuracy\_Report:

## Equipment Used

This Survey was prepared using GPS and Leveling instruments. The horizontal location of the well was established using GPS.

The vertical data was collected using Level Wild NA-2. Coordinates are based on the Florida State Plane Coordinate System, East Zone, NAD 83/90. Elevations based on NAVD88

Logical\_Consistency\_Report:

Horizontal data was established using NGS control points AJ5244 (GCY D01) and AJ5245 (GCY D02).

Vertical data was established using NGS benchmarks AD6243 (MAR 10 FLDNR) and AJ5245 (GCY D02).

Coordinates are based on the Florida State Plane Coordinate System, East Zone, NAD 83/90.

Elevations are based on NAVD88.

Completeness\_Report:

Horizontal location taken at approximate center of well.

## Project Results

Lat. +26°58' 22.685"

Long. -080°05' 26.584"

N 960411.138

E 952324.929

New leveled elevations.

New site benchmark "M1039" is a standard S.F.W.M.D.

aluminum disc in the concrete encasement for tape down well.

Disc elevation is 22.37' (NAVD88).

Top of pipe elevation is 22.69' (NAVD88)

based on NGS NAVD88 adjustment of vertical network.

Origin of NAVD88 elevation for BM "M1039" and well

"M1039" is closed bench level circuit through NGS

benchmarks AD6243 (MAR 10 FLDNR) and AJ5245

(GCY D02)

Well is situated West of U.S. 1 and North of County Line

Road in Section 19-T40S-R42E, Martin County, Florida

TO REACH the well from the intersection of US-1 and

County Line Road in Tequesta, Florida, travel West on

County Line Road for 0.2 miles to the entrance of

Tequesta Park on the right (North). Turn right and enter

the park. Immediately after entering the park, there is a

sandy trail to the right (east) which circles the park. Turn

right and follow the sandy trail for 0.2 miles to the well on

the left side of the trail. Well is a 2-1/2" diameter pipe

protruding 0.35' above a 1' diameter concrete/metal

encasement (encasement protrudes 0.75' above the

ground surface) lying 10 feet (more or less) West of the

centerline of said trail. Benchmark is a set aluminum

SFWMD disc set in the South side of the concrete

encasement (0.28' South and 0.04' West) of well pipe

Positional\_Accuracy:

Horizontal\_Positional\_Accuracy:

## Horizontal

Horizontal\_Positional\_Accuracy\_Report:

The horizontal position of the well "M1039" was

established using differential GPS. NGS points AJ5244

(GCY D01) and AJ5245 (GCY D02) were used as a source

of horizontal control.

Quantitative\_Horizontal\_Positional\_Accuracy\_Assessment:

Horizontal\_Positional\_Accuracy\_Value: 1 meter

Horizontal\_Positional\_Accuracy\_Explanation: The intended

horizontal positional accuracy for this survey is 1 meter

Vertical\_Positional\_Accuracy:

**Level Line**

M1039.gen

Vertical\_Positional\_Accuracy\_Report:

A level line was run originating on NGS control point AD6243 (MAR 10 FLDNR) with NAVD-88 elevation, running through well and disc "M1039" and terminated on point AJ5245 (GCY D02) in accordance with Florida Minimum Technical Standards.

Quantitative\_Vertical\_Positional\_Accuracy\_Assessment:

Vertical\_Positional\_Accuracy\_Value: 0.02 feet

Vertical\_Positional\_Accuracy\_Explanation: A bench level

circuit was performed between AD6243 (MAR 10 FLDNR) and AJ5245 (GCY D02), running through well "M1039" in accordance with Florida Minimum Technical Standards (Chapter 61G17-6, FAC). Length of benchmark run is 2.18 miles. Allowable error is 0.07 feet. Achieved Accuracy is 0.02 feet.

Lineage:

Source\_Information:

Source\_Citation:

Citation\_Information:

Series\_Information:

Publication\_Information:

Larger\_Work\_Citation:

Citation\_Information:

Series\_Information:

Publication\_Information:

Source\_Time\_Period\_of\_Content:

Time\_Period\_Information:

Single\_Date/Time:

Range\_of\_Dates/Times:

Multiple\_Dates/Times:

Process\_Step:

Process\_Description:

The horizontal work was performed using Ashtech GPS receivers. The vertical work was performed using level

Wild

N-A2

Process\_Date: 20050823

Process\_Time: 09000000

Process\_Contact:

Contact\_Information:

Contact\_Person\_Primary:

Contact\_Organization\_Primary:

Contact\_Address:

Spatial\_Data\_Organization\_Information:

Spatial\_Reference\_Information:

Horizontal\_Coordinate\_System\_Definition:

Geographic:

Planar:

Map\_Projection:

Albers\_Conical\_Equal\_Area:

Azimuthal\_Equidistant:

Equidistant\_Conic:

Equiangular:

General\_Vertical\_Near-sidereal\_Perspective:

Gnomonic:

Lambert\_Azimuthal\_Equal\_Area:

Lambert\_Conformal\_Conic:

Mercator:

Modified\_Stereographic\_for\_Alaska:

Miller\_Cylindrical:

Oblique\_Mercator:

Oblique\_Line\_Point:

Orthographic:

Polar\_Stereographic:

Polyconic:

Robinson:

Sinusoidal:

van\_der\_Grinten:

Space\_Oblique\_Mercator\_(Landsat):

Stereographic:

Transverse\_Mercator:

van\_der\_Grinten:

M1039.gen  
 Grid\_Coordinate\_System:  
   Universal\_Transverse\_Mercator:  
     Transverse\_Mercator:  
   Universal\_Polar\_Stereographic:  
     Polar\_Stereographic:  
   StatePlane\_Coordinate\_System:  
     Lambert\_Conformal\_Conic:  
     Transverse\_Mercator:  
     Oblique\_Mercator:  
       Oblique\_Line\_Point:  
     Polyconic:  
   ARC\_Coordinate\_System:  
     Equi\_rectangular:  
     Azimuthal\_Equidistant:  
   Local\_Planar:  
   Planar\_Coordinate\_Information:  
     Coordinate\_Representation:  
     Distance\_and\_Bearing\_Representation:  
   Local:  
   Geodetic\_Model:  
   Vertical\_Coordinate\_System\_Definition:  
     Altitude\_System\_Definition:  
     Depth\_System\_Definition:  
 Entity\_and\_Attribute\_Information:  
   Detailed\_Description:  
     Entity\_Type:  
     Attribute:  
       Attribute\_Domain\_Values:  
       Attribute\_Value\_Accuracy\_Information:  
   Overview\_Description:  
 Distribution\_Information:  
   Distributor:  
     Contact\_Information:  
       Contact\_Person\_Primary:  
       Contact\_Organization\_Primary:  
       Contact\_Address:  
   Standard\_Order\_Process:  
     Digital\_Form:  
       Digital\_Transfer\_Information:  
       Digital\_Transfer\_Option:  
         Online\_Option:  
           Computer\_Contact\_Information:  
           Network\_Address:  
           Delivery\_Instructions:  
     Offline\_Option:  
       Recording\_Capacity:  
   Available\_Time\_Period:  
     Time\_Period\_Information:  
       Single\_Date/Time:  
       Range\_of\_Dates/Times:  
       Multiple\_Dates/Times:  
 Metadata\_Reference\_Information:  
   Metadata\_Date: 20050823  
   Metadata\_Contact:  
     Contact\_Information:  
       Contact\_Person\_Primary:  
         Contact\_Person: Mike J. Bartholomew  
         Contact\_Organization: Biscayne Engineering Company, Inc.  
       Contact\_Organization\_Primary:  
         Contact\_Position: Project Surveyor  
       Contact\_Address:  
         Address\_Type: mailing and physical address  
         Address: 529 W. Flagler Street  
         City: Miami  
         State\_or\_Province: FL  
         Postal\_Code: 33130  
         Country: USA  
       Contact\_Voice\_Telephone: (305) 324-7671  
       Contact\_Facsimile\_Telephone: (305) 324-0809  
       Contact\_Electronic\_Mail\_Address: mi keb@biscayneengineering.com



M1039.gen

Hours\_of\_Service: 8:00 AM to 5:00 PM EST

Metadata\_Standard\_Name: FGDC Content Standards for Digital Geospatial Metadata

Metadata\_Standard\_Version: 1.0

Metadata\_Time\_Convention: Local time

Metadata\_Security\_Information:

**M-1039**



**Biscayne Engineering Company, Inc.  
Date of Photo: 09-12-05  
View: Looking Northeast at Service Road  
from entrance to Tequesta Park**



# M-1039



To WELL M1039

**Biscayne Engineering Company, Inc.**  
**Date of Photo: 09-12-05**  
**View: Looking Northeast at entrance to Service Road**



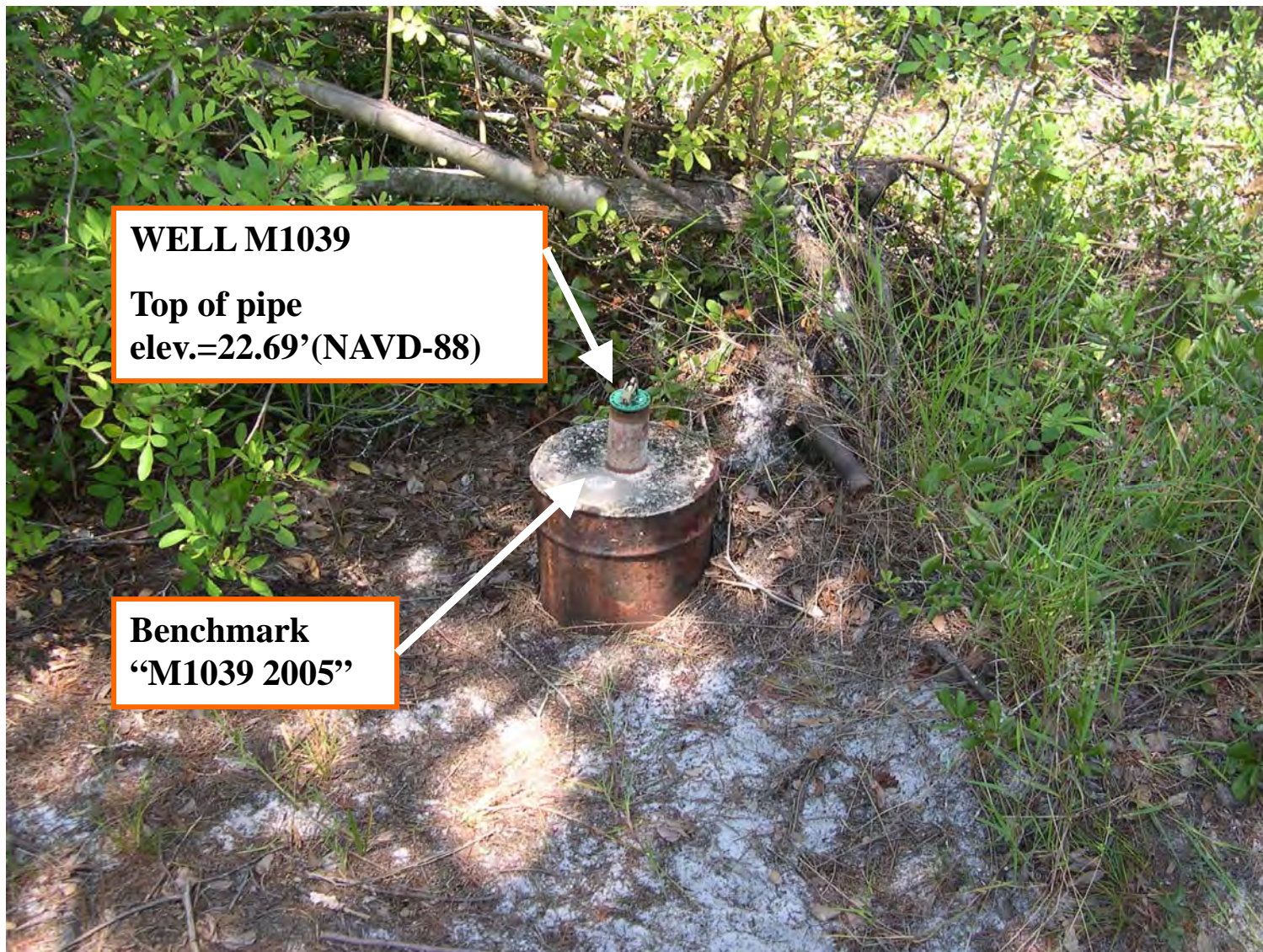
# M-1039



**Biscayne Engineering Company, Inc.**  
**Date of Photo: 09-12-05**  
**View: Looking North along Service Road**



# M-1039



**WELL M1039**

**Top of pipe  
elev.=22.69'(NAVD-88)**

**Benchmark  
"M1039 2005"**

**Biscayne Engineering Company, Inc.  
Date of Photo: 09-12-05  
View: Well M-1039**



**Benchmark "M1039 2005"**

**Elev.=22.37'(NAVD-88)**

**M-1039**



**Biscayne Engineering Company, Inc.**  
**Date of Photo: 09-12-05**  
**View: Benchmark M-1039 2005**

A. REDERO  
T. LOPEZ  
N. CEPEDA

#03-77478  
S.F.W.M.D  
"SITE-A"

8/3/05

( ESTABLISH  
ELEV. ON WELL  
M1039 )

STA	BS	MEAN	HI	FS	MEAN	ELEV	BM ELEV	DESC.
BM	9.370 7.410 5.450	7.410	22.440 ✓				15.03	NGS # AD 6243 FND DISC STAMPED MAR 10 FLDNR. 78.2' FT W. OF US 1 S.E. LANE 450' FT N. OF COUNTY LINE NAVD 88
TP # 1				1.330 0.720 0.110	0.720	21.720 ✓		SET CUT NL
SHAKE	8.170 6.690 5.210	6.690	28.410 ✓					SET CUT NL
TP # 2				10.790 9.350 7.710	9.350	19.060 ✓		SET CUT NL
SHAKE	3.810 2.260 0.710	2.260	21.320 ✓					SET CUT NL
TP # 3				8.920 7.400 5.850	7.400	13.920 ✓		SET CUT NL

SAME  
CREW

#03-77478  
S.F.W.M.D  
"SITE-A"

8/3/05

(ELEV. CONT.)

STA	BS	MEAN	HI	FS	MEAN	ELEV.	BM ELEV	DESC
SHAKE	5.540 4.685 3.830	4.685	18.605 ✓					SET CUT NL
TP#4				1.960 1.215 0.470	1.215	17.39 ✓		SET 80 D SPIKE
SHAKE	7.270 6.540 5.810	6.540	23.93 ✓					SET 80 D SPIKE
TP#5				5.500 4.060 2.620	4.060	19.87 ✓		SET 80 D SPIKE
SHAKE	5.585 4.640 3.695	4.64	24.51 ✓					SET 80 D SPIKE
TP#6				3.750 2.755 1.760	2.755	21.755 ✓		SET MAG NL IN TREE STUMP



SAME  
CREW

#03-77476  
S.F.W.M.D.  
"SITE-A"

3/3/05

(ELEV. CONT.)

STA	BS	MEAN	HI	FS	MEAN	ELEV	BM ELEV.	DESC.
SHAKE	3.470 2.980 2.490	2.980	24.735					SET MAG NL IN TREE TRUNK
M1039				2.770 2.050 2.220	2.050	22.685		TOP OF PIPE WELL = M1039
SHAKE	2.350 1.630 0.910	1.630	24.315					TOP OF PIPE WELL = M1039
TP # 7				3.070 2.555 2.365	2.555	21.760		MAG NL IN TREE TRUNK
SHAKE	3.640 2.650 1.660	2.650	24.410					MAG NL IN TREE TRUNK
TP # 8				5.480 4.530 2.590	4.530	19.880		SET 80 D SPIKE

SAME  
CREW

#03-77478  
S. F. W. M. D

8/3/05

"SITE - A"

(ELEV. CONT)

STA	BS	MEAN	III	FS	MEAN	ELEV	BM ELEV	DESC
SHAKE	5.510 4.070 2.630	4.070	33.750	✓				SET 80 D SPIKE
TP# 9				7.280 6.550 5.820	6.550	17.400	✓	SET 80 D SPIKE
SHAKE	2.340 1.650 0.960	1.650	19.050	✓				SET 80 D SPIKE
TP# 10				6.010 5.120 4.730	5.120	13.930	✓	SET CUT NL
SHAKE	7.130 5.710 4.290	5.710	19.640	✓				SET CUT NL
TP # 11				6.060 6.420 4.780	6.420	13.220	✓	SET CUT NL

2548/03

SAME  
CREW

#03-77478  
S.F.W.M.D.

2548 / 04

8/3/05

"SITE-A"

(ELEV. CONT)

STA	BS	MEAN	HI	FS	MEAN	ELEV	BM ELEV	DESC
SHAKE	5.950 4.495 3.040	4.495	17.715 ✓					SET CUT NL
TP#12				6.000 4.780 3.560	4.780	12.935 ✓		SET CUT NL
SHAKE	7.160 5.920 4.680	5.920	18.855 ✓					SET CUT NL
TP#13				11.750 10.050 8.350	10.050	8.805 ✓		SET CUT NL
SHAKE	6.590 5.290 3.990	5.290	14.095 ✓					SET CUT NL
TP#14				7.790 5.845 3.900	5.845	8.250 ✓		SET CUT NL

SAME  
CREIN

#03-77478  
S.F.W.M.D

8/3/05

"SITE-A"

(ELEV. CONT)

STA	BS	MEAN	HI	FS	MEAN	ELEV	EM ELEV	DESC
SHAKE	6.870 5.360 3.850	5.360	13.610	✓				SET CUT NL
TP#15				5.380 3.430 1.480	3.430	10.180	✓	SET CUT NL
SHAKE	4.330 2.820 1.310	2.820	13.000	✓				SET CUT NL
TP#16				7.460 5.660 3.860	5.660	7.340	✓	SET CUT NL
SHAKE	6.290 4.790 3.290	4.790	12.130	✓				SET CUT NL
TP#17				5.150 3.305 1.460	3.305	8.825	✓	SET CUT NL

SAME  
CREW

#03-77478  
S.F.V.M.D.

"SITE-A"

8/3/05

(ELEV. CONT.)

STA	BS	MEAN	HI	FS	MEAN	ELEV	BM ELEV	DESC
SHAKE	9.600 8.100 6.600	8.100	16.925	✓				SET CUT NL
TP # 18				12.750 10.560 8.370	10.560	6.365	✓	SET CUT NL
SHAKE	7.550 5.310 3.070	5.310	11.675	✓				SET CUT NL
TP # 19				7.750 5.825 3.900	5.825	5.850	✓	SET CUT NL
SHAKE	7.870 6.355 4.840	6.355	12.205	✓				SET CUT NL
TP # 20				5.870 3.870 1.850	3.870	8.335	✓	SET CUT NL

SAME  
CREW

#03-77478  
S.F.W.M.D

8/3/05

"SITE-A"

(ELEV CONT)

STA	BS	MEAN	HI	FS	MEAN
SHAKE	7.320 6.385 5.450	6.385	17.720 ✓		

BM				6.040 5.460 4.880	5.460
----	--	--	--	-------------------------	-------

BM	3.605 3.425 3.245	3.425	26.110 ✓		
----	-------------------------	-------	----------	--	--

DISC M1039				3.970 3.740 3.560	3.74
---------------	--	--	--	-------------------------	------

SHAKE	3.320 3.140 2.960	3.140	25.510 ✓		
-------	-------------------------	-------	----------	--	--

BM				3.865 3.755 3.645	3.755
----	--	--	--	-------------------------	-------

2548/07

ELEV	BM ELEV	DESC
------	------------	------

SET CUT NL

↓  
NGS # A55245  
FND DISC STAMPED  
GCY DOZ 2001  
29.6' W OF W. EDGE OF PAV.  
COUNTY LINE RD. NEAR HEAD W.  
NAVD 88

22.685 WELL = M1039

22.310 ↓		SET S.F.W.M.D DISC STAMPED M1039 2005
----------	--	--

21.755	21.755	TP #6	MAG NL IN STUMP
NO ERROR			



SAME  
CREW

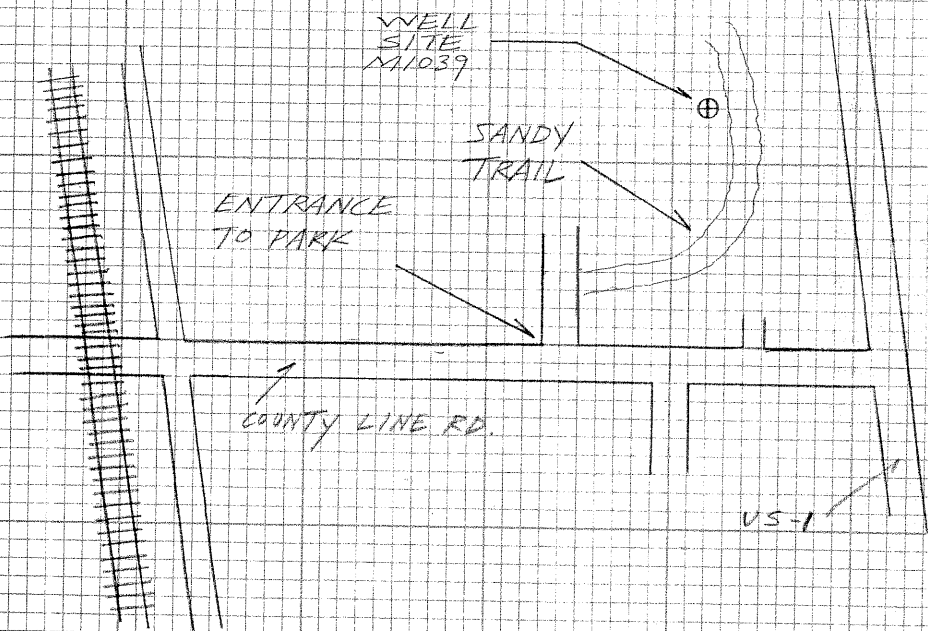
#03-77478  
S.F.W.M.D.

(SITE - A  
DESCRIPTION)

8/3/05

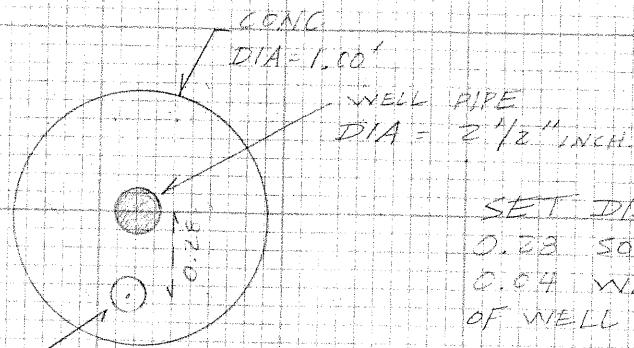
DIRECTIONS -

FROM THE INTERSECTION OF  
US-1 AND COUNTY LINE RD.  
TRAVEL WEST ON COUNTY  
LINE RD FOR 0.2 MILES  
TO THE ENTRANCE OF TERQUESTA  
PARK. TURN NORTH INTO  
PARK AND THEN EAST ONTO A  
SANDY TRAIL THAT CIRCLES  
AROUND FOR 0.2 MILES. THE  
WELL IS ON THE LEFT SIDE  
OF THE TRAIL.



2548/08  
SKETCH OF WELL SITE = M11039

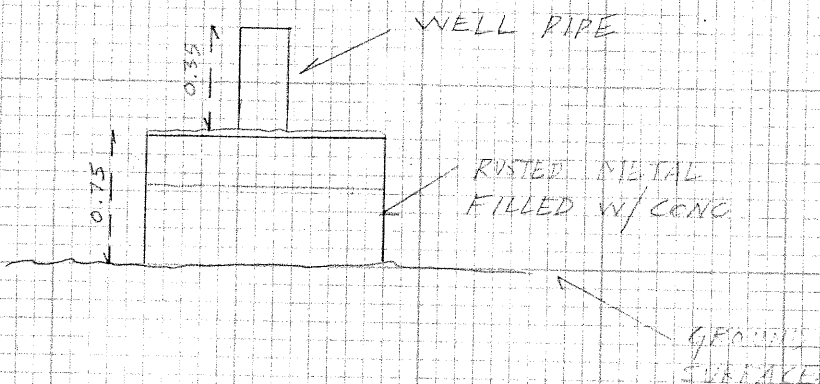
TOP VIEW



SET DISC  
0.28 SOUTH  
0.04 WEST  
OF WELL PIPE

SET  
S.F.W.M.D.  
DISC  
STAMPED  
M11039 2005

SIDE VIEW



SAME  
CREN

#03-77478  
S.F.W.M.D.

2548/09

3/3/05

"SITE - B"

(ESTABLISH  
ELEV ON WELL  
M1233)

STA	BS	MEAN HI	FS	MEAN
BM	4.675 4.530 4.385	4.530	12.250	
M1233			4.975 4.970 4.895	4.910
SHAKE	5.385 5.325 5.265	5.325	12.665	
BM			5.095 4.995 4.795	4.945

ELEV	BM ELEV	DESC
7.720		NGS # AJ 5644 END DISC STAMPED B SIG 2001 52.50' N. OF PROJ. & OF SE COUNTY WINE RD AND 4' W. OF PROJ. W. EDGE OF MAX. OF SE WOODEN BRIDGE LN.
7.340		TOP OF PIPE WELL = M1233
		TOP OF PIPE WELL = M1233
7.720	7.720	NGS # AJ 5644 END BRASS D. NAVD 88



SAME  
CREW

#03-77473  
S.F.W.M.D.

"SITE-B"

8/3/05

(ESTABLISH  
ELEV. ON WELL  
M1230)

STA	BS	MEAN	HI	FS	MEAN
BM	4.790 4.640 4.490	4.640	12.360		
M1230				5.010 4.925 4.640	4.925
SHAKE	5.300 5.215 5.130	5.215	12.650		
BM				5.080 4.930 4.780	4.930

2543/10

ELEV	BM ELEV	DESC
7.720	7.720	NGS # AJ5644 FND DISC. STAMPED 3 516 2001 52.50' N. OF PROJ. C. OF SE COUNTY LINE RD. 4' W. OF PROJ. W. EDGE OF PAV. SE. WOOLEN BRIDGE LN TOP OF PIPE WELL = M1230 NAVD 88
7.435		
		TOP OF PIPE WELL = M1230
7.720	7.720	NGS # AJ 5644 FND BRASS D. NAVD 88

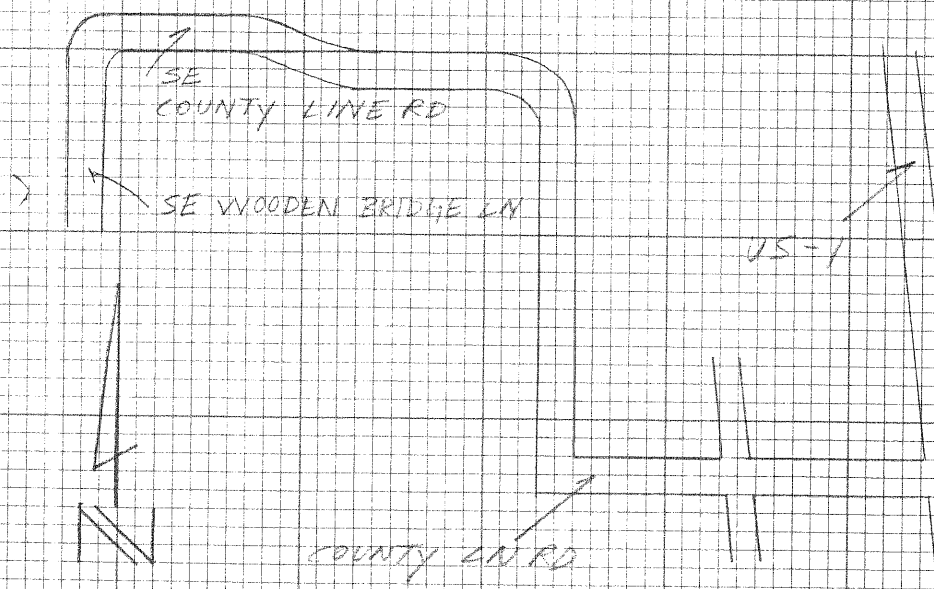
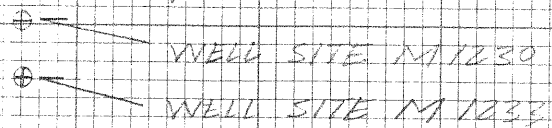
SAME  
CREW

#03-478  
S.F.W.M.D.

SITE - B  
DESCRIPTION

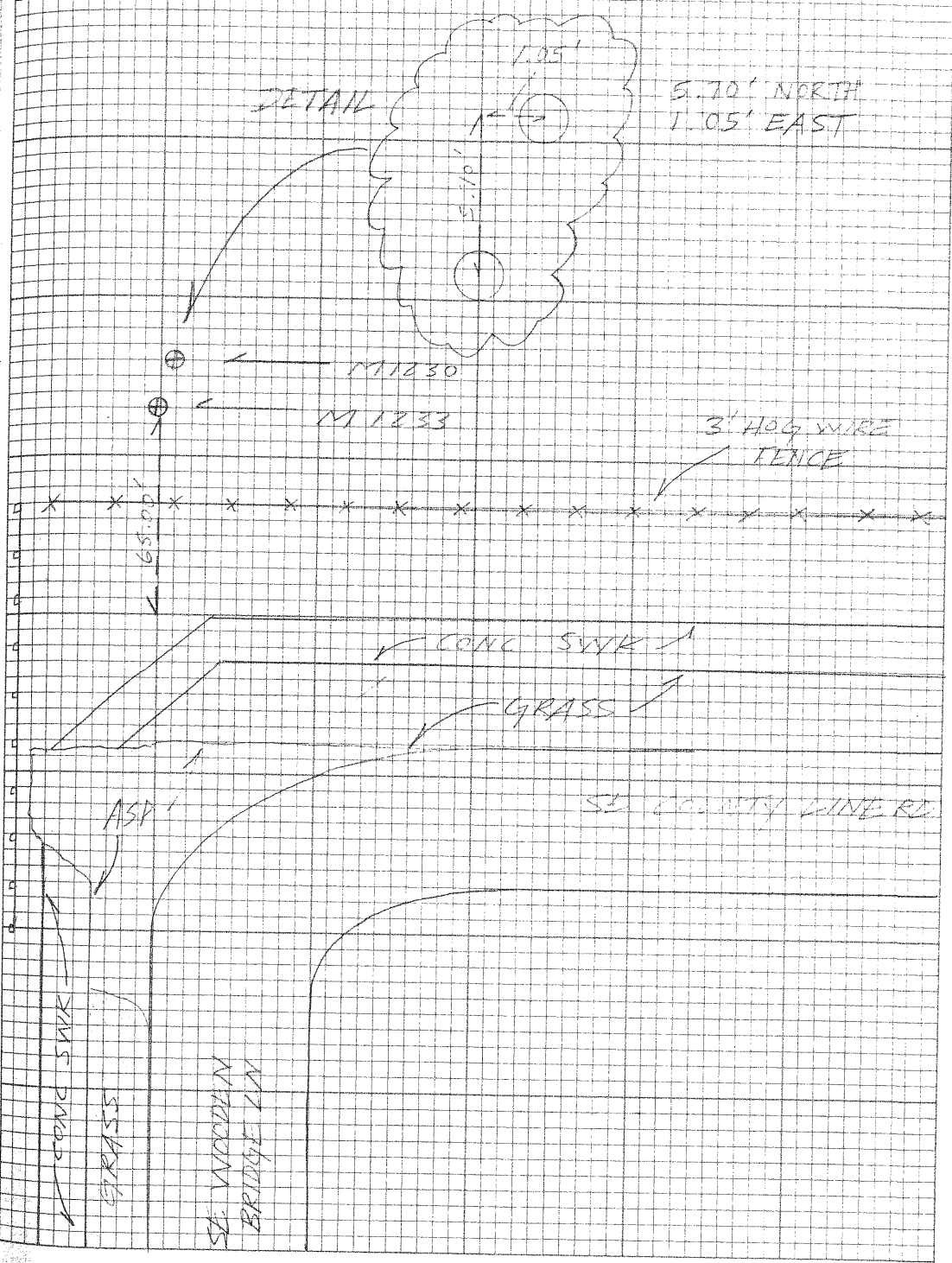
8/3/05

DIRECTIONS - FROM THE INTERSECTION OF US  
AND COUNTY LN RD. TRAVEL WEST  
ON COUNTY LN RD. FOR 1.3 MILE  
CONTINUE NORTH FOR 0.9 MILE  
AND CONTINUE WEST AGAIN FOR  
0.7 MILES ON SE. COUNTY LN RD WHERE  
IT TURNS SOUTH AND BECOMES  
SE WOODEN BRIDGE LN PARK ON SIDE  
OF RD. AND WALK NORTH INTO WOODS  
THE WELLS ARE 96' NORTH OF  
PROJECTED  $\phi$  OF SE COUNTY LN RD  
AND ARE ON LINE WITH THE WEST  
EDGE OF PAY. OF SE WOOD BRIDGE LN.



2548/11

DETAIL



A. REPERO  
T. LOPEZ  
N. CEPEDA

#03-17478  
S.F.W.M.D  
"SITE - C"

8/4/05

( ESTABLISH  
ELEV. ON WELLS  
M1229, M1232 )

STA	BS	MEAN	HI	FS	MEAN	ELEV	BM ELEV	DESC
BM	5.860 5.050 4.240	5.050	14.310	✓			9.260	NGS # AJ 5647 FND DISC STAMPED E. 516 2001 AT THE INTERSECTION OF PINE TREE ST AT MARTIN COUNTY & WEST PALM LINE. 13 FT NORTH OF WOOD POWER POLE SET CUT NL NAVD 88
TP#1				6.920 5.245 3.570	5.245	9.065	✓	
SHAKE	6.245 4.755 3.265	4.755	13.820	✓				SET CUT NL
TP#2				5.650 3.860 2.070	3.860	9.960	✓	SET CUT NL
SHAKE	7.000 5.270 3.540	5.270	15.230	✓				SET CUT NL
TP#3				8.720 7.010 5.300	7.010	8.220	✓	SET CUT NL

SAME  
CREW

#03-77978  
S.F.W.M.D.  
" SITE - C "

8/4/05

(ELEV CONT)

STA	ES	MEAN	HI	FS	MEAN	ELEV	BM ELEV	DESC
SHAKE	7.020 5.705 4.390	5.705	13.975	✓				SET CUT NL
TP# 4				6.565 5.065 3.565	5.065	8.860 ✓		SET CUT NL
SHAKE	6.900 4.930 2.960	4.930	13.770	✓				SET CUT NL
TP# 5				7.100 5.395 3.690	5.395	8.395 ✓		SET CUT NL
SHAKE	7.000 5.250 3.500	5.250	13.645	✓				SET CUT NL
TP# 6				5.705 5.705 1.705	3.705	9.940 ✓		SET CUT NL

SAME  
CREW

#03-77478  
S.F.W.M.D.

2548 / 14

8/4/05

"SITE-C"

(ELEV. CONT.)

STA	BS	MEAN	HI	FS	MEAN	ELEV	BM ELEV	DESC
SHAKE	6.610 4.555 2.500	4.555	14.495	✓				SET CUT NL
TP # 7				7.770 5.535 3.280	5.525	8.970	✓	SET CUT NL
SHAKE	7.280 5.175 3.070	5.175	14.145	✓				SET CUT NL
TP # 8				11.880 7.550 7.120	7.550	4.595	✓	SET CUT NL
SHAKE	7.1500 5.195 3.240	5.195	9.790	✓				SET CUT NL
TP # 9				3.980 2.180 0.380	2.180	7.610	✓	SET CUT NL



SAME  
CREW

#03 - 77478  
S.F.V.V.M.D

8/4/05

"SITE-C"

(ELEV. CONT)

STA	BS	MEAN	HI	FS	MEAN	ELEV	ZM ELEV	DESC
SHAKE	7.570 6.490 5.410	6.49	14.100					SET CUT NL
TP#10				6.490 5.150 3.870	5.180	8.920		SET CUT NL
SHAKE	5.740 4.705 3.670	4.705	13.625					SET CUT NL
TP #11				5.900 5.008 4.100	5.000	8.625		SET MAG NL & W
SHAKE	4.750 4.300 3.850	4.300	12.925					SET MAG NL & W
M 1232				5.190 4.740 4.290	4.740	8.185		TOP OF PIPE WELL = M1232

SAME  
OPEN #03-77478  
S.F.W.M.I.

"SITE-C"

8/4/05

(ELEV. CONT)

STA	BS	MEAN	HI	FS	MEAN	ELEV	BM ELEV	DESC
SHAKE	5.380 4.930 4.490	4.930	13.115 ✓					TOP OF PIPE WELL 1232
TR #11				5.270 4.350 4.430	4.850	8.265 ✓		TOP OF PIPE WELL 1229
SHAKE	4.890 4.450 4.020	4.450	12.715 ✓					TOP OF PIPE WELL 1229
TR #12				4.540 4.090 3.640	4.090	8.625 ✓		SET MAG NL & W
SHAKE	5.970 5.090 4.210	5.090	13.715 ✓					SET MAG NL & W
TR #13				5.850 4.800 3.750	4.800	8.915 ✓		SET CUT NL

SAME  
CREW

#03-77478  
S.F.W.M.D.  
"SITE - C"

8/4/05

(ELEV. CONT.)

STA	RS	MEAN	HL	FS	MEAN	ELEV	BM ELEV	DESC
SHAKE	6.640 5.335 4.030	5.335	14.250					SET CUT NL
TP#14				7.730 6.645 5.560	6.645	7.605		SET CUT NL
SHAKE	4.150 2.475 0.800	2.475	10.080					SET CUT NL
TP#15				7.570 5.490 3.410	5.490	4.590		SET CUT NL
SHAKE	11.450 9.175 6.940	9.175	13.785					SET CUT NL
TP#16				7.500 4.820 2.670	4.820	8.965		SET CUT NL



SAME  
CREW

#03-77478  
S.F.V.M.D  
"SITE-C"

8/4/05

(ELEV. CONT)

STA	BS	MEAN	HI	FS	MEAN	ELEV	BM ELEV	DESC
SHAKE	7.520 5.575 3.330	5.575	14.540					SET CUT NL
TP# 17				6.655 4.605 3.535	4.605	9.935 ✓		SET CUT NL
SHAKE	6.010 3.790 1.570	3.790	13.725 ✓					SET CUT NL
TP# 18				6.900 5.330 3.760	5.330	8.375 ✓		SET CUT NL
SHAKE	7.370 5.460 3.550	5.460	13.855 ✓					SET CUT NL
TP# 19				6.760 5.000 3.240	5.000	8.855 ✓		SET CUT NL

SAME  
CREW

#03-77473  
S.F.V.M.L.  
"SITE-C"

2/9/05

(ELEV. CONT)

STA	BS	MEAN HI	FS	MEAN	ELEV	BM ELEV.	DESC
SHAKE	6.820 5.320 5.920	5.320	14.175				SET CUT NL
TP#20				7.280 5.960 4.640	5.960	8.215	SET CUT NL
SHAKE	7.780 6.340 4.900	6.340	14.555				SET CUT NL
TP#21				9.230 6.920 4.610	6.920	7.635	SET CUT NL
SHAKE	2.520 1.325 0.130	1.325	8.760				SET CUT NL
TP#22				7.290 5.475 3.700	5.475	3.465	SET CUT NL

2543/19

SAME  
CREW

#03-77478  
S.F.W.M.D.  
"SITE - C"

8/4/05

(ELEV. CONT.)

2548/20

STA	BS	MEAN	HI	FS	MEAN	ELEV	BM ELEV	DESC
SHAKE	6.890 5.270 3.650	5.270	8.735	✓				SET CUT NL
TP# 23				6.690 5.160 3.640	5.760	3.575	✓	SET CUT NL
SHAKE	15.580 13.916 12.24	13.91	17.485	✓				SET CUT NL
TP# 24				10.200 7.700 5.200	7.700	9.785	✓	SET CUT NL
SHAKE	2.680 1.680 0.740	1.680	11.465	✓				SET CUT NL
TP# 25				5.840 4.490 3.140	4.490	6.975	✓	SET CUT NL

SAME  
CREW

#03-77478  
S.F.W.M.D

2548/21

8/4/05

"SITE - C"

(ELEV. CONT)

STA	BS	MEAN	HI	FS	MEAN	ELEV	BM ELEV	DESC
SHAKE	9.050 7.380 5.710	7.380	14.355					SET CUT NL
TP #26				7.380 6.190 5.000	6.190	8.165		SET CUT NL
SHAKE	5.910 5.690 5.570	5.690	13.855					SET CUT NL
BM				7.615 7.355 7.160	7.385	6.470	6.450	NGS # AJ 3646 END FLANGE - ENCASED STAINLESS STEEL PIPE STAMPING ID SIG 7001 INTERSECTION OF COUNTRY CLUB DRIVE AND ISLAND WAY. 13.7 FT N.W. OF FIRE HYDRANT. NAYD 88

ERR = 0.0204

SAME  
CREW

#03-77473  
S.F.W.M.D.

3/4/05

"SITE C"

2542/21

STA	BS	MEAN HI	FS	MEAN	ELEV	BM ELEV	DESC
	5.160						
BM	4.920 4.680	4.720	13.185			8.265	WELL=M/237
DISC M/237				4.930 4.685 4.440	4.685	8.500	SET S.F.W.M.D. DISC STAMPED M/237
SHAKE	4.720 4.465 4.310	4.465	12.965				" "
BM				4.785 4.340 3.955	4.340	8.625 8.625	TRAIL M/237 W. NO ERROR

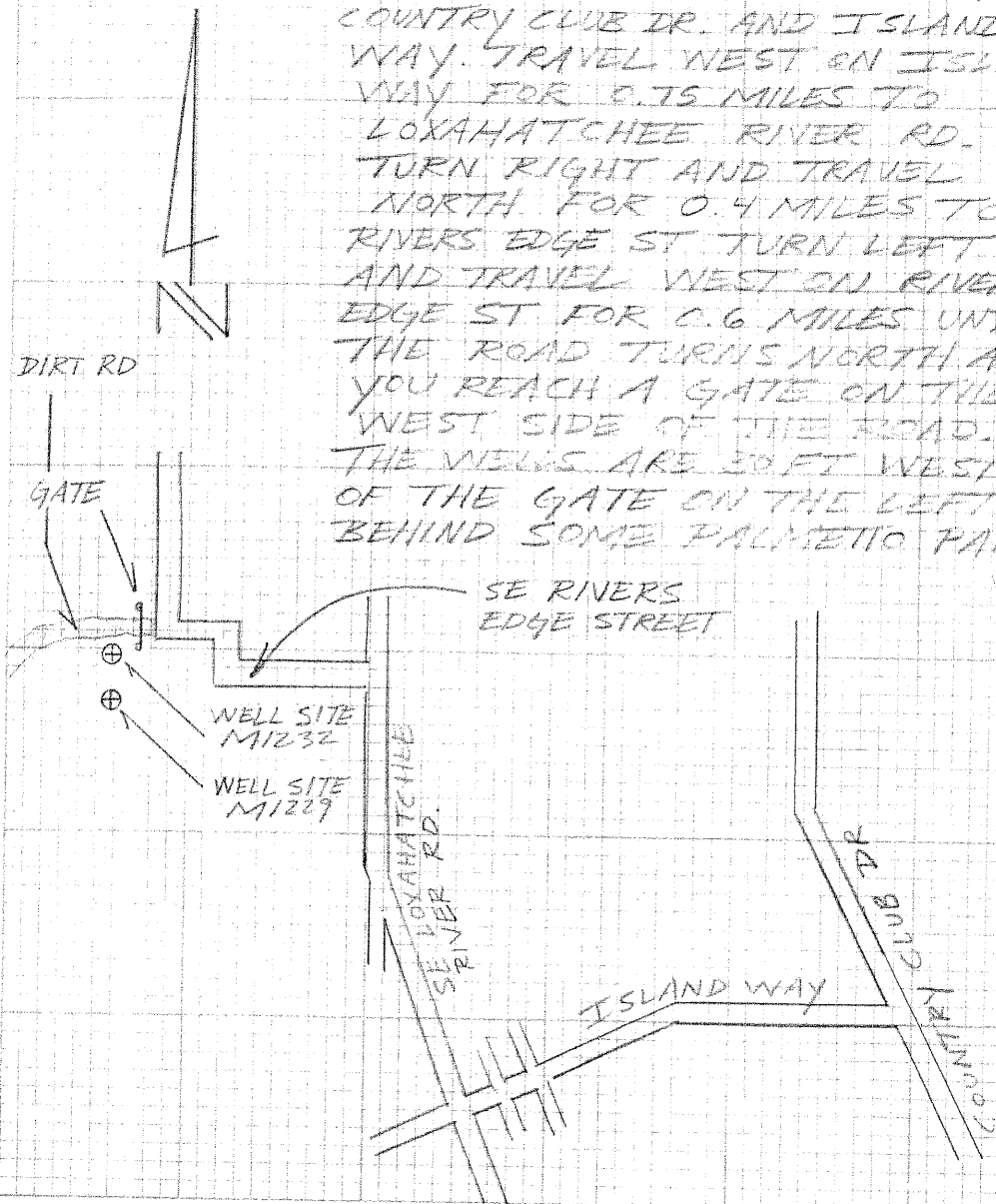
SAME  
CREW

#03-77478  
S.F.W.M.D

8/4/05

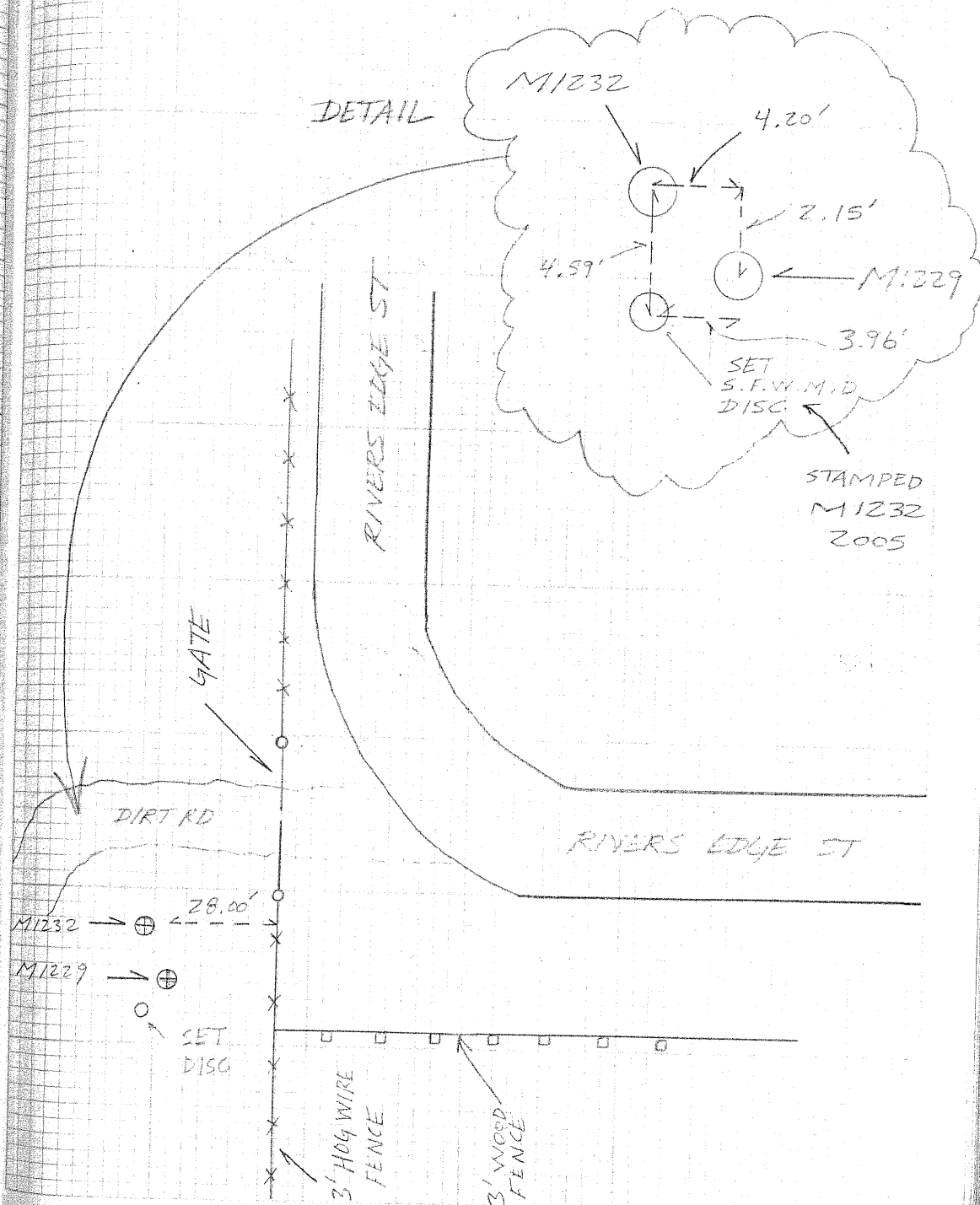
(SITE-C  
DESCRIPTION)

DIRECTIONS - FROM THE INTERSECTION OF  
COUNTRY CLUB DR. AND ISLAND  
WAY. TRAVEL WEST ON ISLAND  
WAY FOR 0.75 MILES TO  
LOXAHATCHEE RIVER RD.  
TURN RIGHT AND TRAVEL  
NORTH FOR 0.4 MILES TO  
RIVERS EDGE ST. TURN LEFT  
AND TRAVEL WEST ON RIVERS  
EDGE ST FOR 0.6 MILES UNTIL  
THE ROAD TURNS NORTH AND  
YOU REACH A GATE ON THE  
WEST SIDE OF THE ROAD.  
THE WELLS ARE 30 FT WEST  
OF THE GATE ON THE LEFT  
BEHIND SOME PALMETTO PALMS.



2548/23

DETAIL



A. PEDERO  
T. IOPPE  
N. CEDELA

#03-17478  
S.F.W.M.E.

"SITE-D9E"

3/9/05

(ESTABLISH  
ELEV. ON WELLS  
M1092; M1044, M1258)

STA	BS	MEAN	HI	FS	MEAN	ELEV	BM ELEV
BM	6.570 5.310 4.050	5.310	13.230				7.920
M1092				5.430 7.305 6.180	7.305	5.925	
SHAKE	7.380 6.720 3.610	6.730	12.655				
TP#1				5.090 3.740 2.370	3.740	8.915	
SHAKE	7.740 6.150 4.560	6.150	15.065				
TP#2				6.290 4.905 3.520	4.925	10.160	

BM  
ELEV  
DESC  
NGS# AF3053  
FND DISC STAMPED 0224 1965  
0.7 MILES SOUTHEAST FROM  
AIA AND SOUTHEAST BRIDGE RD.  
20.31' NORTHEAST OF POWER POLE.  
NAVD 83

TOP OF PIPE WELL = M1092

TOP OF PIPE WELL = M1092

SET CUT NL

SET CUT NL

SET CUT NL

SAME  
CREW

#03-77173  
S. F. V. M. D

3/8/05

" SITE - D/E "

(ELEV. CONT)

STA	ES	MEAN	MI	ES	MEAN	ELEV.	BM ELEV	DESC
SHAKE	5.540 4.680 3.920	4.680	14.340					SET CUT NL
M1044				6.480 5.740 2.600	5.740	9.100		TOP OF PIPE WELL = M1044
SHAKE	6.480 5.480 4.730	5.480	14.980					TOP OF PIPE WELL = M1044
M1258				6.150 5.720 4.930	5.720	8.850		TOP OF PIPE WELL = M1258
SHAKE	7.330 6.250 4.730	6.250	14.950					TOP OF PIPE WELL = M1258
TP#3				7.160 5.400 3.640	5.400	9.450		SET CUT NL



SAME  
CREW

#03-77478  
S.F.W.M.D

1548/26

5/8/05

"SITE DGE"

(ELEV. CONT)

STA	BS	MEAN	HI	FS	MEAN	ELEV	BM ELEV	DESC
SHAKE	6.750 5.730 5.710	5.730	14.68					SET CUT NL
TP#4				3.570 4.550 2.530	4.550	10.130		SET CUT NL
SHAKE	2.340 6.805 5.210	6.805	16.935					SET CUT NL
TP#5				4.260 2.495 0.730	2.495	14.440		SET CUT NL
SHAKE	7.010 7.470 5.730	7.470	21.910					SET CUT NL

EM

5.220  
3.910  
2.600

3.910

18.000  
18.000  
NO ERROR

NGS# AF7531  
FND FLANGE - ENCASED STAINLESS  
STEEL ROD  
STAMPING C403 1991  
147.6' NE OF AIA  
1.3' SE OF POWER POLE

SAME  
CREW

#03-77478  
S.F.W.M.D.

8/8/05

" SITE - E "

(ELEV. CONT.)

STA	ZS	MEAN	HI	FS	MEAN	ELEV	BM ELEV.	DESC
	6.160							
BM	5.295	5.295	14.395				9.100	WELL = M1044
	4.430							
DISC M1044				6.010	5.135	9.260		SET S.F.W.M.D. DISC STAMPED M1044 2005
				5.135				
				4.260				
SHAKE	6.300							
	5.430	5.430	14.690					
	4.560							
BM				5.260	4.530	10.160	10.160	TP # 2 CUT NL
				4.530				
				3.800				

NO ERROR

2548/27

SAIIE  
CREW

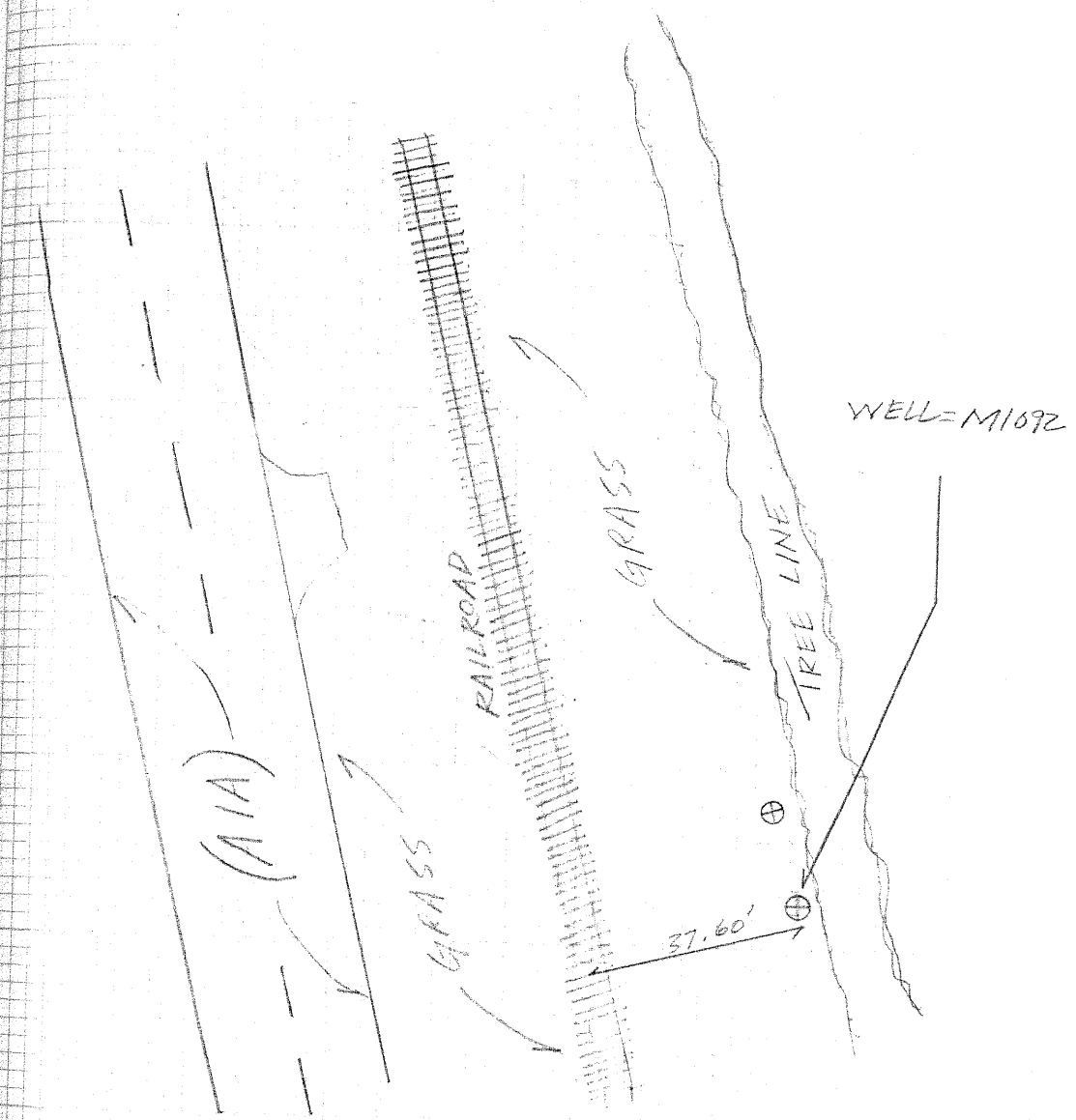
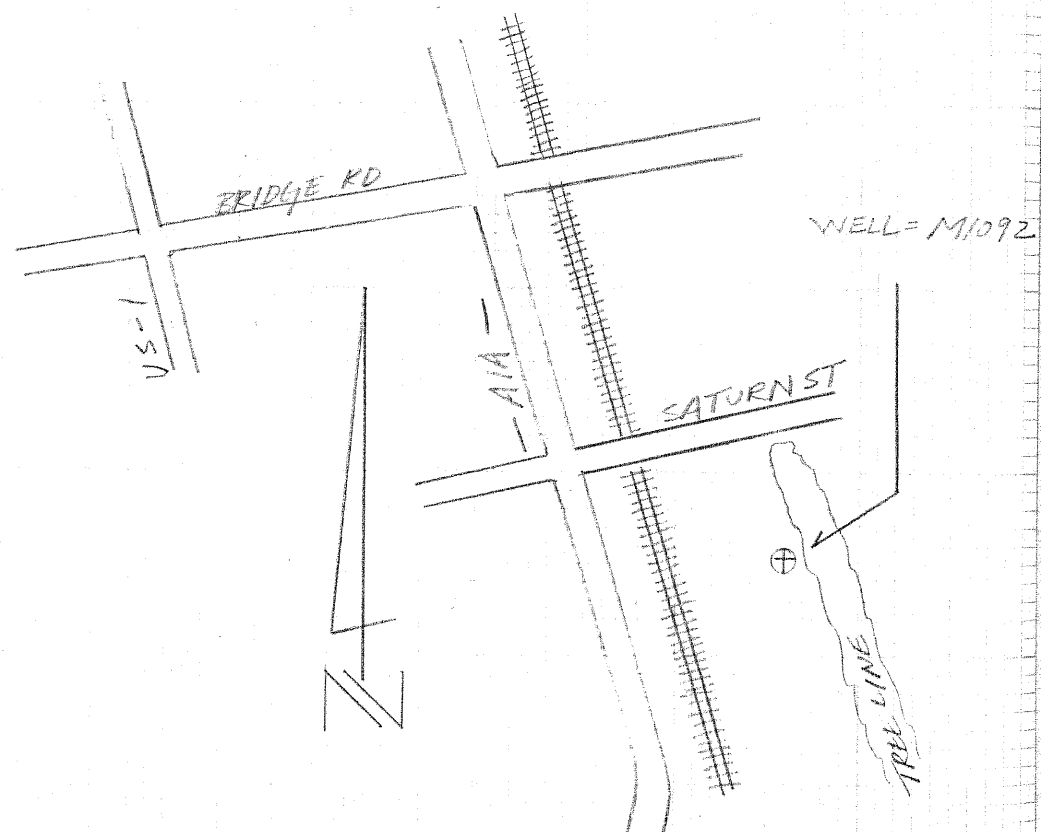
#03-77478  
S.F.W.M.D

2548/28

8/8/05

(SITE - D  
DESCRIPTION)

DIRECTIONS - FROM THE INTERSECTION OF  
BRIDGE RD. AND US-1 TRAVEL  
EAST ON BRIDGE RD. FOR 0.35  
MILES TO AIA. TURN SOUTH ON  
AIA AND TRAVEL FOR 0.7 MILES.  
PARK ON EAST SIDE OF ROAD.  
THE WELL IS 37.60 FT EAST  
OF CENTER OF RAILROAD TRACKS  
AT THE BASE OF TREE LINE  
BORDERING A TWO STORY BROWN  
HOUSE.



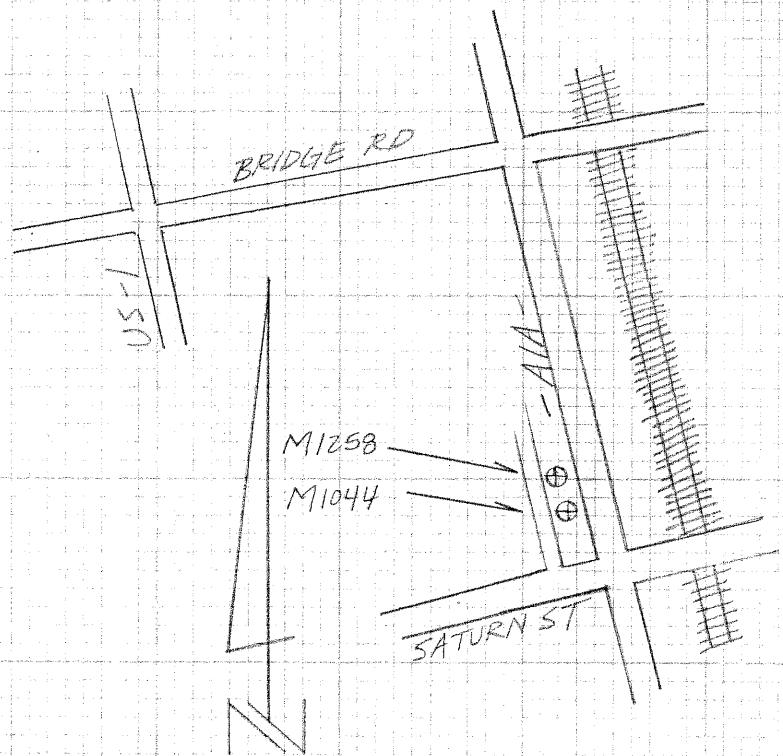
SAME  
CREW

#03-77478  
S.F.W.M.D.

8/8/05

(SITE-E  
DESCRIPTION)

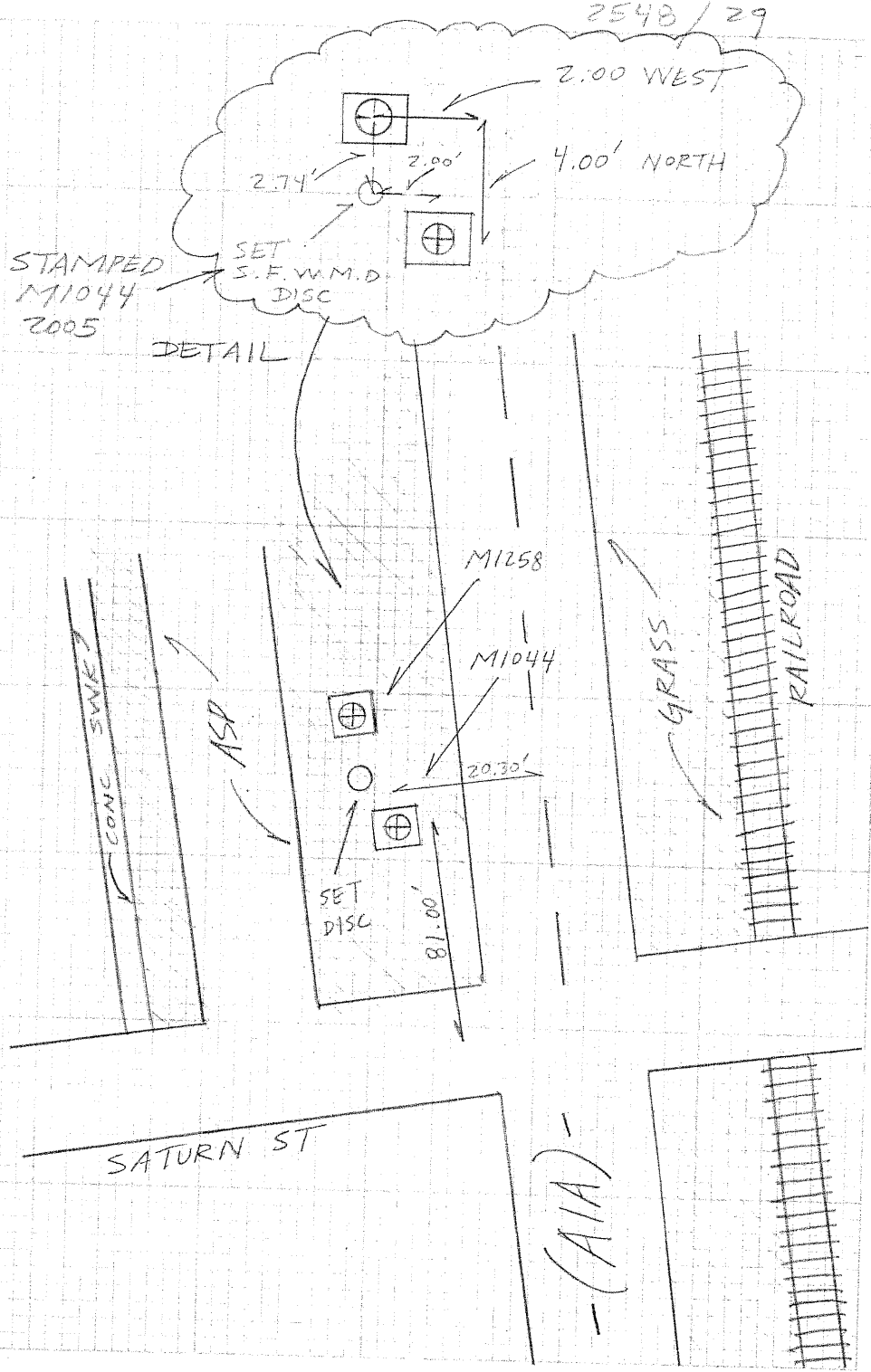
DIRECTIONS - FROM THE INTERSECTION OF  
BRIDGE RD AND US-1 TRAVEL  
EAST ON BRIDGE RD FOR 0.35  
MILES TO AIA. TURN SOUTH  
AND TRAVEL FOR 0.5 MILES  
TO SATURN ST. WELLS ARE  
JUST NORTH OF SATURN ST.  
ON THE WEST SIDE OF AIA.



2548/29

STAMPED  
M1044  
2005

DETAIL





SAME  
CREW

#03-77473  
S.F.W.M.D.  
"SITE-F"

8/8/05

(ESTABLISH  
ELEV. ON WELL  
M1057)

STA	BS	MEAN	HI	FS	MEAN	ELEV	BM ELEV
BM	8.080 5.555 5.030	6.555	11.365 ✓				4.810
TP#1				7.810 5.350 2.890	5.350	6.015 ✓	
SHAKE	9.840 8.225 6.660	8.250	14.265 ✓				
TP#2				3.770 1.930 0.190	1.930	12.285 ✓	
SHAKE	6.490 6.110 5.730	6.110	18.395 ✓				
M1057				4.325 3.990 3.655	3.990	14.405 ✓	

DESC  
N4 ~~S~~ 7555  
FIND DISC STAMPED 2414 H  
23' W. OF  $\phi$  OF GOMEZ AVE  
28' N. OF  $\phi$  OF PALM STREET  
IN NORTHWEST CORN. OF DRAINAGE  
BOX. NAVD 83

SET CUT NL  
  
SET CUT NL  
  
SET MAG NL  $\phi$  W  
  
SET MAG NL  $\phi$  W  
  
TOP OF PIPE WELL = M1057

SAME  
CREW

#03-77478  
S.F.W.M.D.  
"SITE-F"

8/8/05

(ELEV. CONT)

STA	BS	MEAN	HI	FS	MEAN	ELEV	BM ELEV	DESC
SHAKE	7.500 7.570 6.180	7.570	21.995					TOP OF PIPE WELL = M1057
TP#3				2.940 1.745 0.550	1.745	20.250		SET CUT NL
SHAKE	6.790 6.420 6.050	6.420	26.670					SET CUT NL
BM				6.250 5.600 4.950	5.600	21.070	21.040	ERR = 0.030

NGS # 6781  
FND DISC STAMPED PINE 1929 N03  
1980. 33.5' NW OF  $\phi$  OF SE  
GROSSRIP ST. 89.6' SW OF  
A1A  $\phi$ . 0.7' SE OF WITNESS POST.  
MAY 93



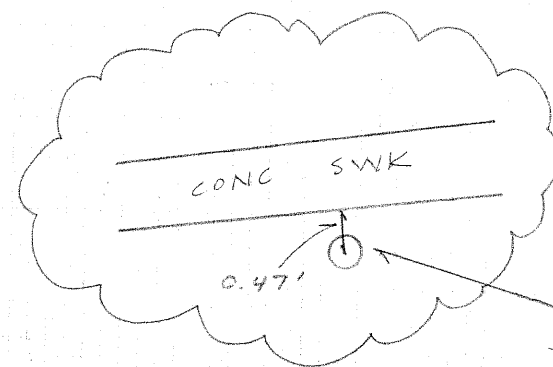
SAME  
CREW

#03-77478  
S.F.W.M.D.

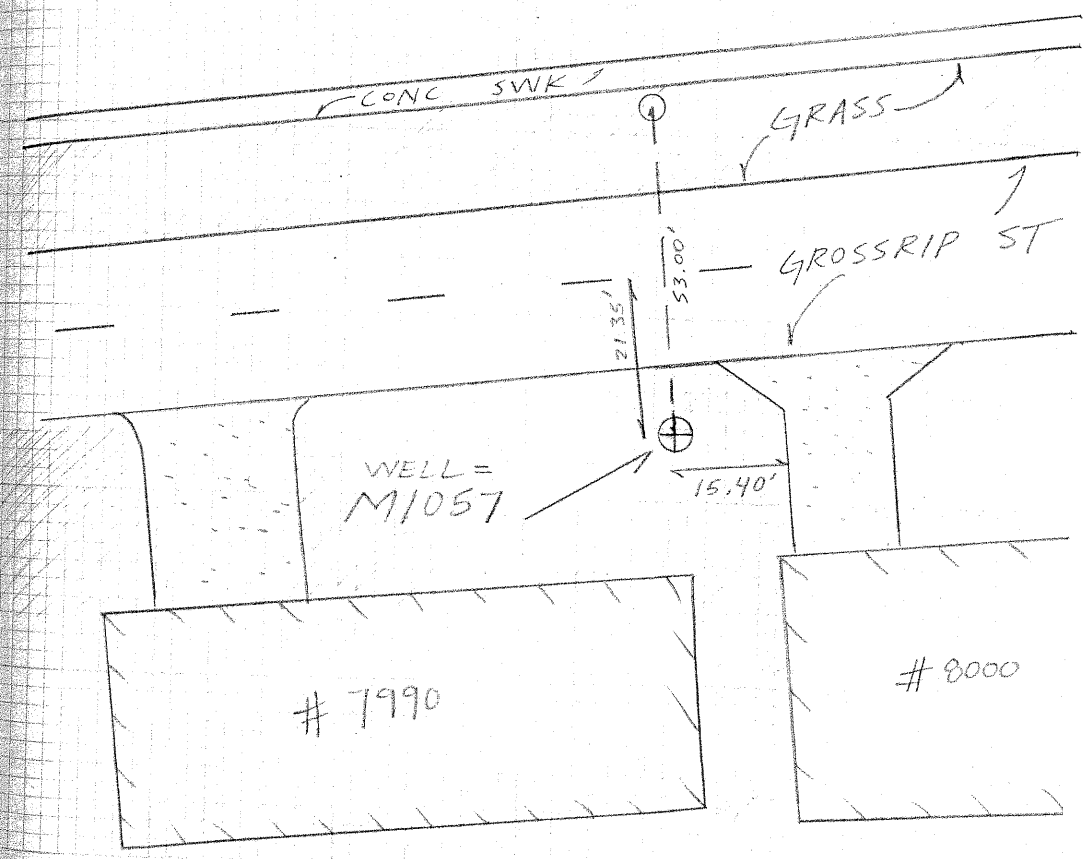
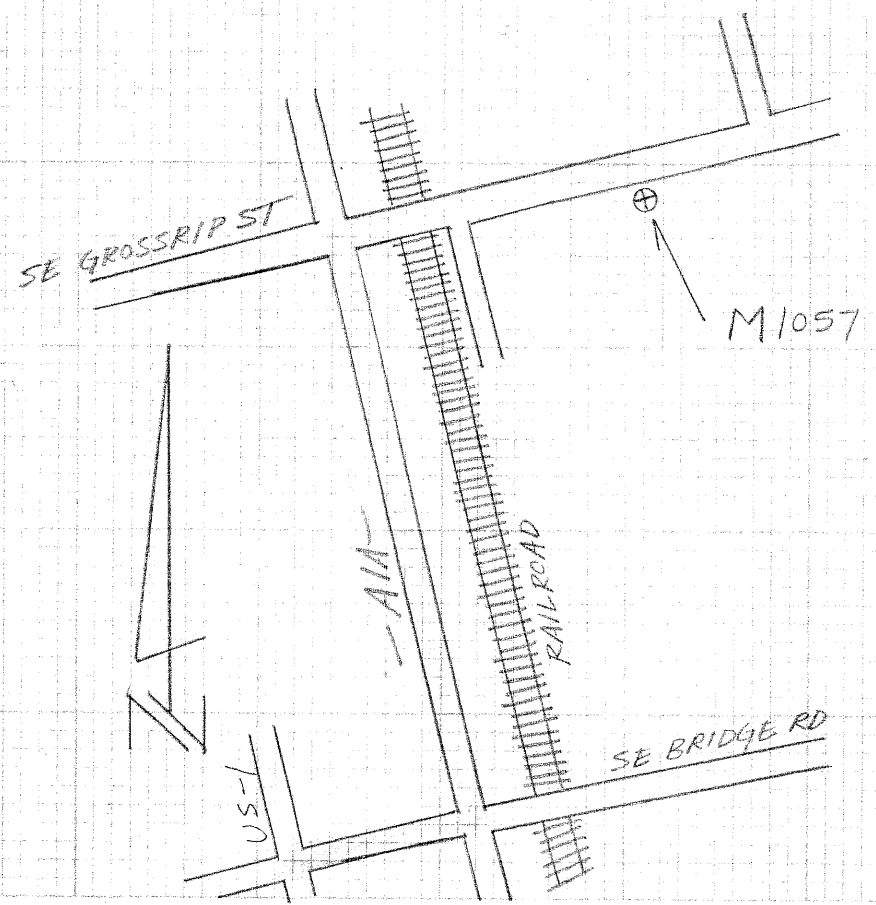
( SITE - F  
DESCRIPTION )

5/8/05

DIRECTIONS - FROM THE INTERSECTION OF US-1 AND  
BRIDGE RD. TRAVEL EAST FOR 0.35 M.  
TO AIA. TURN LEFT AND TRAVEL  
NORTH ON AIA FOR 2.5 MILES  
TO CROSSRIP ST. AT CROSSRIP  
STREET TURN RIGHT AND  
TRAVEL EAST FOR 0.15 MILES  
THE WELL IS ON SOUTH SIDE  
OF ROAD IN FRONT OF HOUSE  
# 7990.



SET S.F.W.M.D  
DISC  
STAMPED  
M1057 2005





A. REIERS  
T. LOPEZ  
C. CHENTLES

#03-77478  
S.F.W.M.D.  
"SITE-6"

8/15/05

(ESTABLISH  
ELEV ON WELL=  
M1269)

STA	BS	MEAN	HI.	FS	MEAN	ELEV	BM ELEV	DESC
	4.160							
BM	3.320 2.480	3.320	20.950				17.630	NGS# 435618 FIND DISC SIMIAPAL NS17 2001 250' S. OF TWIN RIVERS MOBILE HOME PARK ENTRANCE 3.8' NORTHWEST OF POWER POLE. NAVS 88
TP#1				5.920 4.635 3.350	4.635	16.315		SET CUT NL
SHAKE	7.320 5.845 4.370	5.845	22.160					SET CUT NL
TP#2				6.010 4.600 3.190	4.600	17.560		SET CUT NL
SHAKE	7.470 5.730 3.990	5.730	23.290					SET CUT NL
TP#3				5.415 4.125 2.835	4.125	19.165		SET CUT NL

SAME  
CREW

#03-77478  
S.F.W.M.D.

"SITE-4"

8/15/05

(ELEV. CONT)

STA	BS	MEAN	HI	FS	MEAN	ELEV	BM ELEV	DESC
SHAKE	6.045 5.745 5.445	5.745	24.910					SET CUT NL
M1269				7.370 6.915 6.460	6.915	17.995		TOP OF PIPE WELL = M1269
SHAKE	7.630 6.440 5.250	6.440	24.435					" "
TP # 4				6.420 4.800 3.130	4.800	19.635		SET CUT NL
SHAKE	6.660 4.890 3.120	4.890	24.525					SET CUT NL
TP # 5				6.900 5.610 4.320	5.610	18.915		SET CUT NL

SAME  
CREW

#03-77478  
S.F.W.M.D.  
"SITE-G"

540/36

8/15/05

(ELEV. CONT)

STA	BS	MEAN	HI	FS	MEAN ELEV	BM ELEV	DESC
SHAKE	5.760 4.180 2.600	4.180	23.095	✓			SET CUT NL
TP#6				6.800 5.290 3.780	5.290	17.805	✓ SET CUT NL
SHAKE	6.390 4.630 2.870	4.630	22.435	✓			SET CUT NL
TP#7				6.800 5.060 3.320	5.060	17.375	✓ SET CUT NL
SHAKE	6.480 4.975 3.470	4.975	22.350	✓			SET CUT NL
TP#8				6.370 4.995 3.600	4.995	17.355	✓ SET CUT NL

SAME  
CREW

#03-77478  
S.F.W.M.D.

8/15/05

"SITE - G"

(ELEV. CONT)

STA	BS	MEAN	HI	FS	MEAN	ELEV	BM ELEV	DESC
SHAKE	9.380 8.125 6.870	8.125	25.480					SET CUT NL
TP# 9				2.450 1.560 0.670	1.560	23.920		SET CUT NL
SHAKE	4.780 4.520 4.260	4.520	28.440					SET CUT NL
BM				6.170 5.925 5.680	5.925	22.515	22.480	

ERR = 0.035

NGS # AJ 5619  
FND DISC STAMPED LS17 2001  
180' NORTHWEST FROM  $\phi$  OF  
OSPREY ST. 11.2' NORTHEAST OF  
BARBED WIRE FENCE.  
NAVD 88



SAME  
CREW

#3-77473  
S.F.W.M.D.  
"SITE-4"

e/15/05

(ELEV. CONT)

STA	BS	MEAN	HL	FS	MEAN	ELEV.	EM ELEV	DESC
BM	6.940 6.910 6.750	6.610	24.605	✓			17.995	NELL = M1267
DISC. M1267				5.650 5.290 5.780	6.290	18.315	✓	SET S.F.W.M.D. DISC STAMPED M1267
SHAKE	6.800 6.460 6.180	6.460	24.775	✓				" "
EM				6.070 5.610 5.150	5.610	19.165	19.165	TRIP #3 CUT 12 NO ERROR

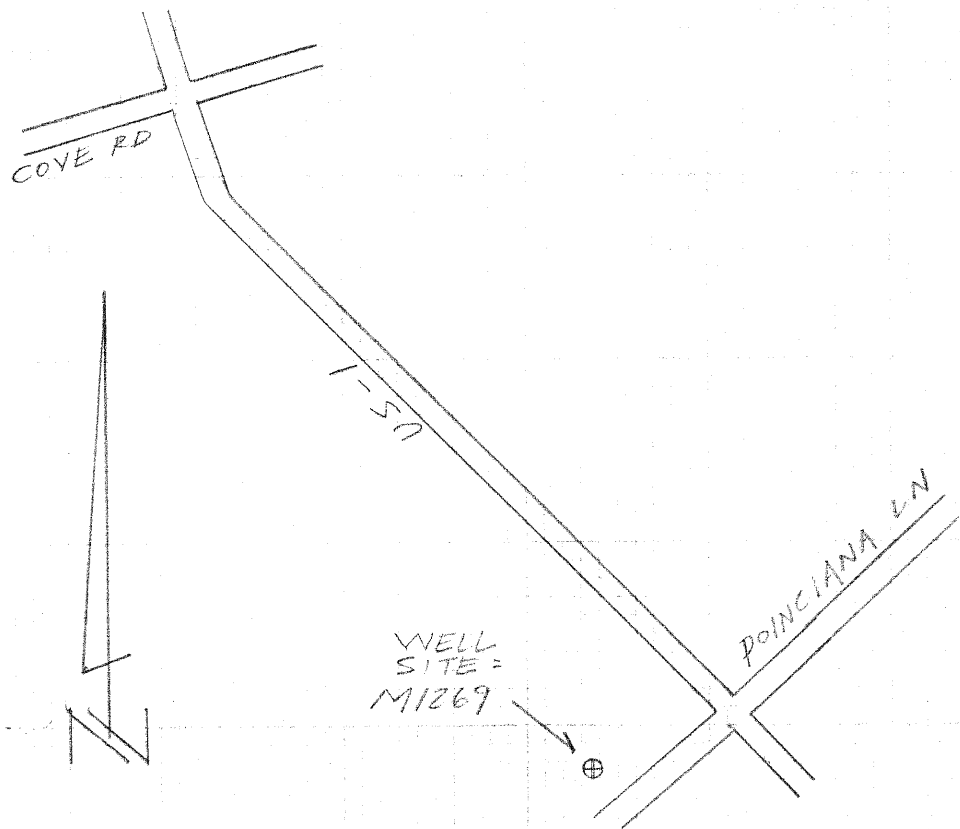
SAME  
CREW

#03-77478  
S.F.W.M.D.

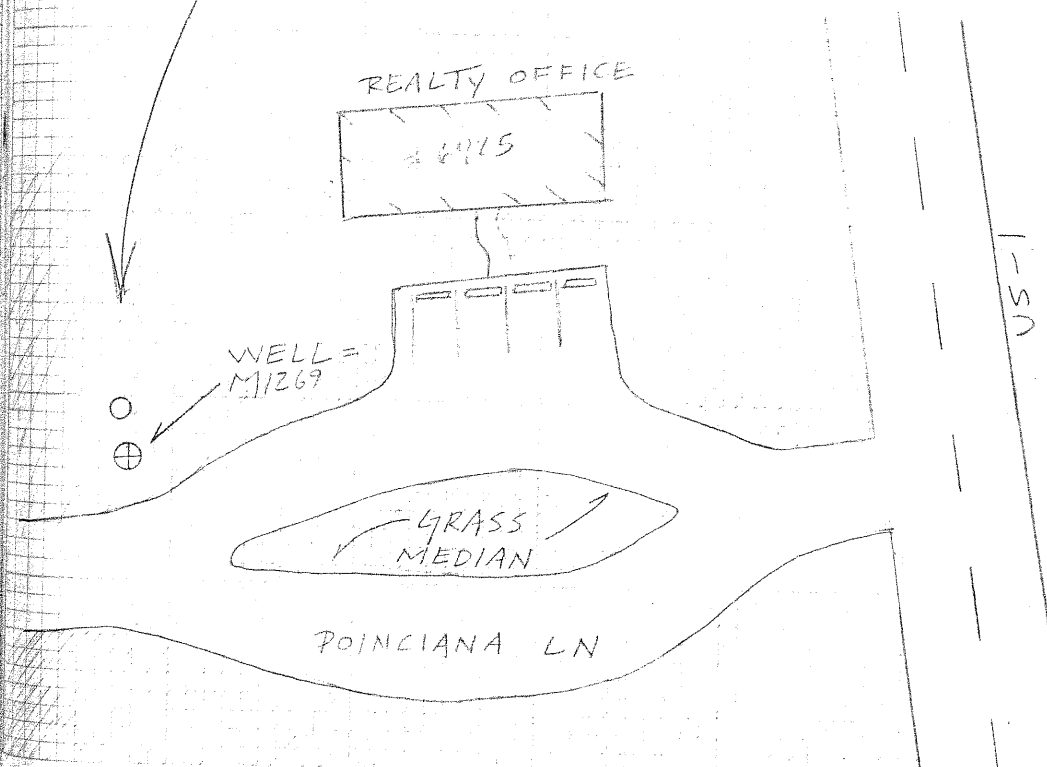
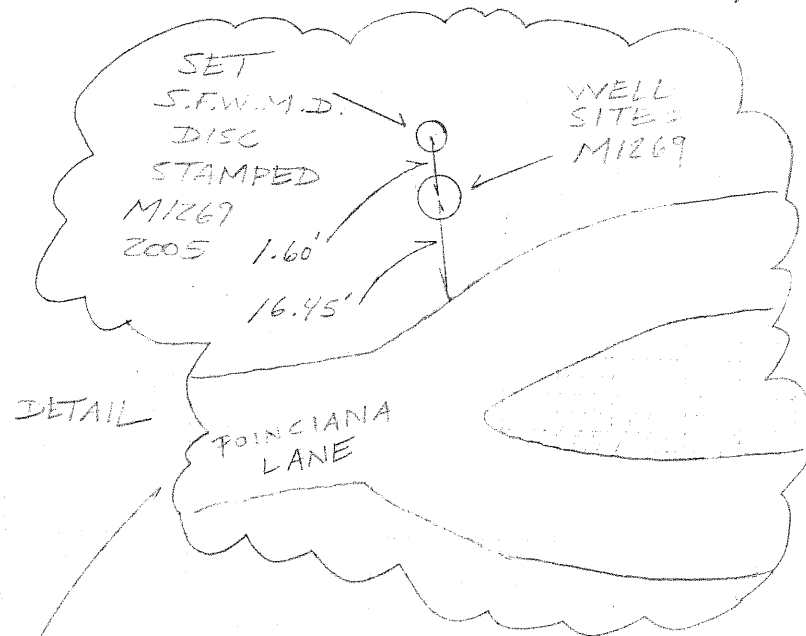
(SITE-G  
DESCRIPTION)

8/15/05

DIRECTIONS - FROM THE INTERSECTION OF  
US-1 AND COVE RD. TRAVEL  
SOUTH ON US-1 FOR 3.1 MILES  
TO POINCIANA LANE. TURN  
RIGHT AND TRAVEL WEST.  
THE WELL IS ON NORTH SIDE  
OF POINCIANA LANE RIGHT  
AFTER YOU PASS REALTY OFFICE  
AT THE END OF MEDIAN STRIP.



2548/39



A. REJERO  
T. LOPEZ  
A. SAITANA

#03-77478  
S. F. W. M. D.  
"SITE - H"

6/13/05

ESTABLISH  
ELEV. ON WELLS  
M1235, M1270

STA	BS	MEAN	HI	FS	MEAN ELEV	BM ELEV	DESC
BM	4.860 4.320 3.780	4.320	45.75 4.575			41.430	NGS # AC5345 725 BRASS STAMPED I 95 87 A BY REF MK 2. IN MEDIAN AT N. EDGE OF BRIDGE IN CONC. GUTTER 9.5' NORTH OF THE NW END OF SOUTHWEST BRIDGE. NAVD 83
TP#1				16.540 16.535 15.530	15.535	29.715	SET 3" I SPIKE
SHAKE	3.010 2.850 2.690	2.850	32.565				SET 5" I SPIKE
TP#2				14.630 14.310 13.990	14.310	18.255	SET CUT NL
SHAKE	7.360 5.970 4.580	5.970	24.225				SET CUT NL
TP#3				7.590 5.730 3.870	5.730	18.495	SET CUT NL

SAME  
CREVY

#03-71775  
S.F.W.M.D.  
"SITE - H"

8/18/05

(ELEV. CONT)

STA	BS	MEAN HI	FS	MEAN	ELEV	BM ELEV	DISC
SHAKE	7.070 5.475 3.830	5.475	23.970				SET CUT NL
TP#4							
				7.360 5.750 4.140	5.750	18.220	SET CUT NL
SHAKE	7.300 6.410 5.520	6.410	24.630				SET CUT NL
DISC M1235				8.940 8.490 8.040	8.490	16.140	SET S.F.W.M.D BRASS D. STAMPED M1235 2005
SHAKE	4.680 4.220 3.760	4.220	20.36				"
M1235				3.770 3.575 3.350	3.575	16.785	WELL = M1235

SAME  
CREW

# 3-70478  
STATION  
ELEVATION

3/13/05

(ELEV. CONT)

STA	BS	MEAN HI	FS	MEAN ELEV	B/M ELEV	SIDE
SHAKE	3.91 3.91 3.91	3.91	20.695			WELL = M1235
M1270			5.125 5.23 5.175	5.13	15.165	WELL = M1270
SHAKE	5.420 5.240 5.060	5.240	20.405			WELL = M1270
TP45			3.550 3.030 2.510	3.030	17.375	SET CUT NL
SHAKE	7.910 7.390 6.870	7.390	24.765			SET CUT NL
TP46			7.390 6.560 5.730	6.560	18.215	SET CUT NL



SAME  
CREW

#03-77478  
S.F.W.M.D.  
"SITE-H"

3/15/05

(ELEV. CONT)

STA	BS	MEAN	HI	FS	MEAN	ELEV	BM ELEV	DESC
	7.260							
SHAKE	5.790 4.320	5.790	24.005					SET CUT NL
TP#7				7.250 5.510 3.770	5.510	18.495		SET CUT NL
SHAKE	6.920 5.480 4.040	5.480	23.975					SET CUT NL
TP#8				7.510 5.710 3.910	5.710	18.265		SET CUT NL
SHAKE	13.030 12.715 12.460	12.745	31.010					SET CUT NL
TP#9				1.440 1.290 1.140	1.290	29.720		SET 60D SPIKE

SAME  
CREW

#03-77478  
S.F.W.M.D.  
"SITE-H"

8/18/05

(ELEV. CONT.)

STA	BS	MEAN	HI	FS	MEAN	ELEV	BM ELEV	DESC
-----	----	------	----	----	------	------	------------	------

	18.210							
SHAKE	17.750	17.750	47.470					SET 80 D SPIKE
	17.290							

BM		5.705						
		5.445	5.445		42.025	42.000		
		5.185						

ERR = 0.025

NGS # ACS343 FDOT BRASS I.D.  
STAMPED I 95 89 A 24  
IN MEDIAN AT NORTH END OF  
BRIDGE. 4.6' N. OF THE N.  
CONC. GUARDRAIL BETWEEN  
N. AND S. LANES.  
NAVD 88.

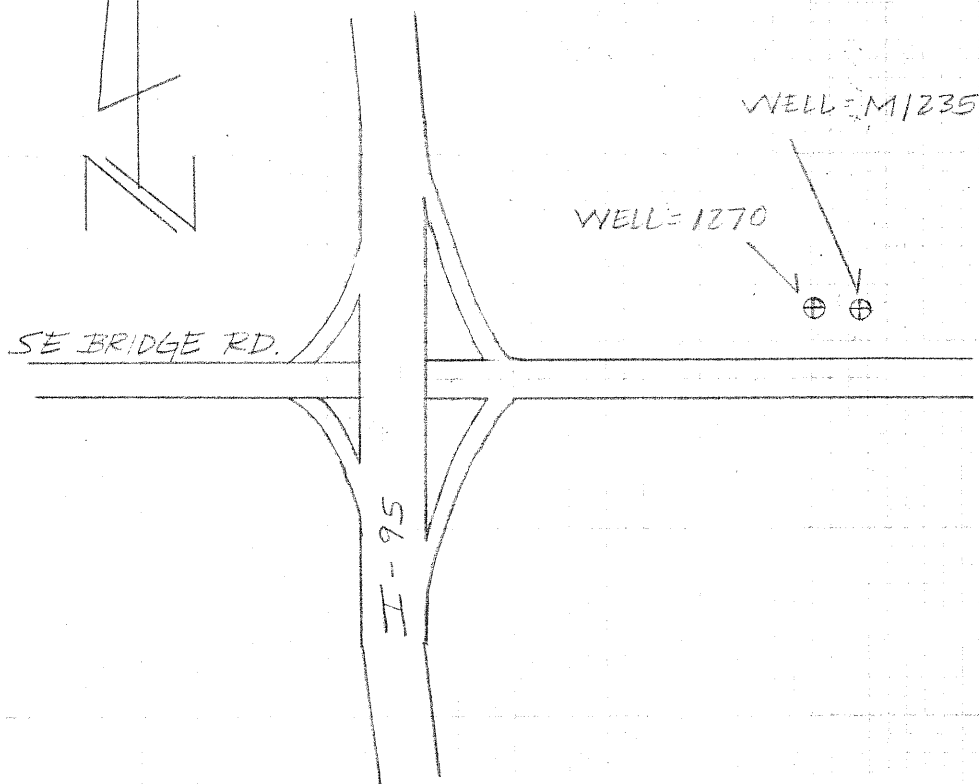
SAME  
CREW

#03-77478  
S.F.W.M.D

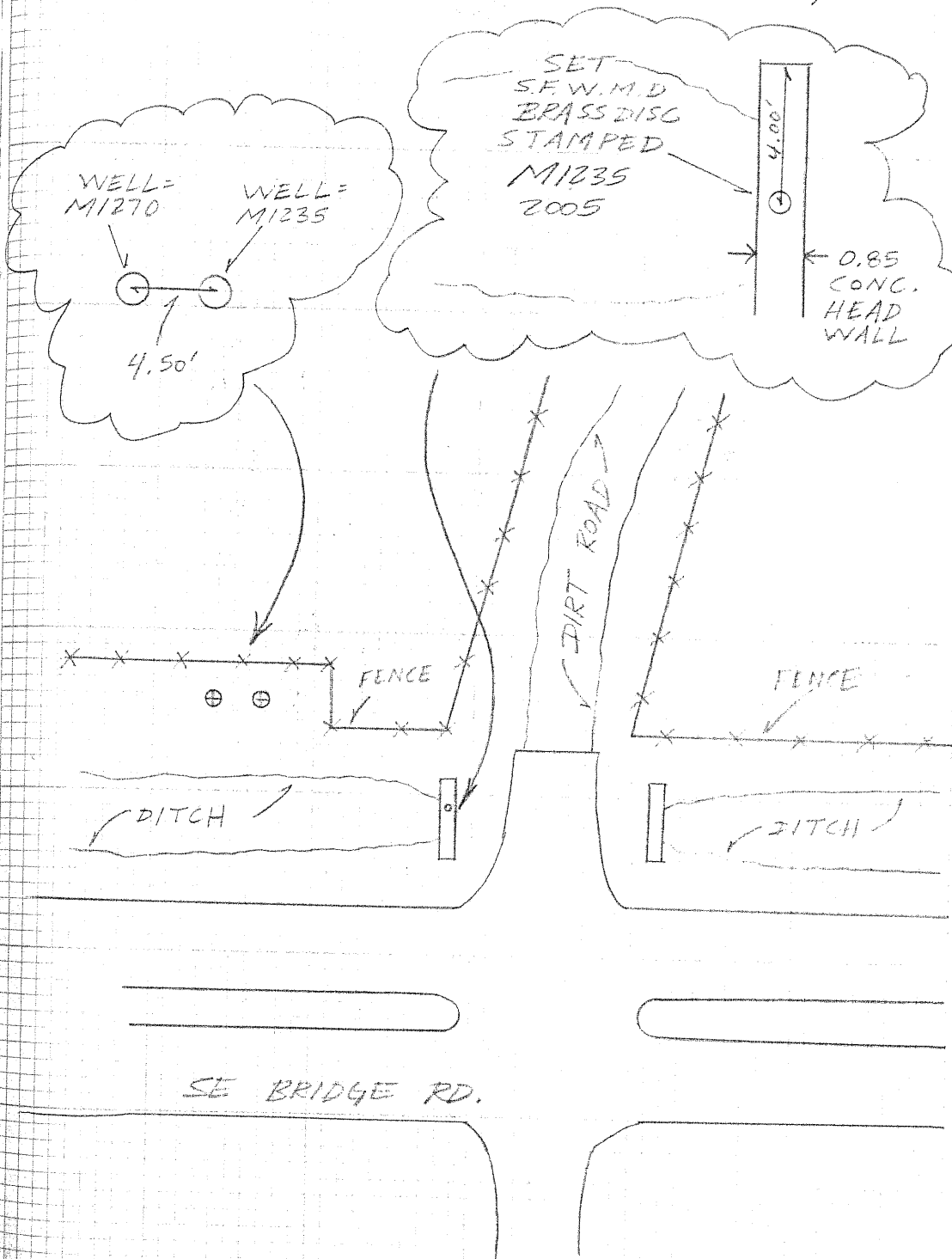
8/18/05

(SITE - H  
DESCRIPTION)

DIRECTIONS - FROM THE INTERSECTION OF  
I-95 AND BRIDGE RD. TRAVEL  
EAST ON BRIDGE RD. FOR 0.3  
MILES. TURN NORTH ON  
DIRT RD AND PARK IN BETWEEN  
DITCH AND FENCE LINE.  
THE WELL IS ON THE NORTH  
SIDE OF THE ACCESS RD. AND  
67' WEST OF DIRT RD.



2543 / 45



A. REJERO  
T. LOPEZ  
A. LOPEZ

#03-77478  
S.F.W.M.L.

3/19/05

"SITE - I"

(ESTABLISH  
ELEV ON WELL =  
M1081)

STA	BS	MEAN	HI	FS	MEAN	ELEV	BM ELEV	DESC
BM	8.520 7.140 5.760	7.140	32.270				25.130	NGS#AJ8248 FND DISC STAMPED NS22 2001 CERP 48.6 N. OF $\phi$ OF KANNER RD 37.0 S. OF POWER POLE W/ GUY WIRE ON W. SIDE OF GATE. NAVD 88
TP# 1				6.590 5.035 3.480	5.035	27.235		SET CUT NL
SHAKE	6.150 5.255 4.360	5.255	32.490					SET CUT NL
M1081				5.035 4.665 4.235	4.665	27.825		WELL # M1081
SHAKE	4.630 4.255 3.235	4.255	32.075					SET CUT NL
TP# 2				5.730 4.840 3.750	4.840	27.235		SET CUT NL

SAME  
CREW

#03-77478  
S.F.W.M.D

2548/47

8/19/05

"SITE - II"

(ELEV. CONT)

STA	BS	MEAN	HI	FS	MEAN	ELEV	BM ELEV	DESC
SHAKE	7.000 5.250 3.500	5.250	32.485					SET CUT NL
TP# 3				7.660 5.295 3.530	5.295	27.190		SET CUT NL
SHAKE	7.370 5.300 3.230	5.300	32.490					SET CUT NL
TP# 4				7.760 5.560 3.360	5.560	26.930		SET CUT NL
SHAKE	8.200 6.095 3.990	6.095	33.025					SET CUT NL
TP# 5				7.030 4.825 2.620	4.825	28.200		SET CUT NL



SAME  
CREW

#03-77478  
S. F. W. M. D

" SITE - I "

8/19/05

(ELEV. CONT)

STA	BS	MEAN	HI	FS	MEAN	ELEV	BM ELEV	DESC
SHAKE	6.520 4.190 1.860	4.190	32.390 ✓					SET CUT NL
TP# 6				7.450 5.210 2.970	5.210	27.180 ✓		SET CUT NL
SHAKE	7.460 4.720 1.980	4.720	31.900 ✓					SET CUT NL
TP# 7				7.000 4.945 2.890	4.945	26.955 ✓		SET CUT NL
SHAKE	7.170 5.330 3.490	5.330	32.785 ✓					SET CUT NL
TP# 8				7.640 5.370 3.100	5.370	26.915 ✓		SET CUT NL

SAME  
CREW

#03-77478  
S.F.W.M.D.

8/19/05

"SITE-I"

(ELEV. CONT)

STA	BS	MEAN	HI	FS	MEAN
SHAKE	6.620 4.800 2.980	4.800	31.715	✓	

BM

8.050  
6.810  
5.570

6.810

ELEV.	BM ELEV.	DESC
-------	-------------	------

SET CUT NL

24.905	24.870	
--------	--------	--

ERR = 0.035

NGS #AJ8247 END FLANGE  
ENCASED ROD STAMPING  
M 522 2001 CERP  
0.2 MILES WEST OF ENTRANCE  
TO PAYSON PARK, 120' S. OF  
C. OF ROAD, 4.0' NORTH OF  
WOODEN FENCE.  
NAVD 88

A. REISERD  
A. LOPEZ  
M. MOYA

7/2/05

#03-17478  
S.F.W.M.D.

"SITE II"

(ELEV CONT)

STA	BS	MEAN	HI	FB	MEAN
M1081	4.945 4.050 3.655	4.050	31.875		
DISC M1061				6.950 6.730 6.480	6.730
SHAKE	6.900 6.570 6.240	6.570	31.715		
TP # 1				5.110 4.480 3.850	4.480

2548/50

ZM  
ELEV DISC

27.825 WELL SITE = M1081

25.145 ✓

SET S.F.W.M.D BRASS D.  
STAMPED M1081 3005

27.235 27.235

OUT NL

No error ✓

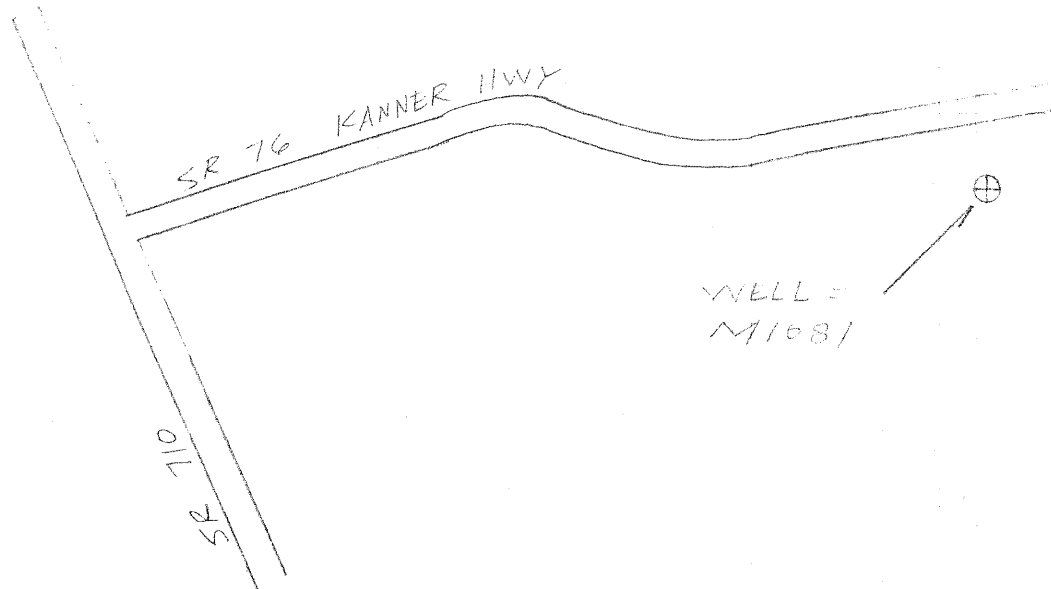
SAME  
CREW

#03-77473  
S.F.W.M.D.

( SITE - I  
DESCRIPTION )

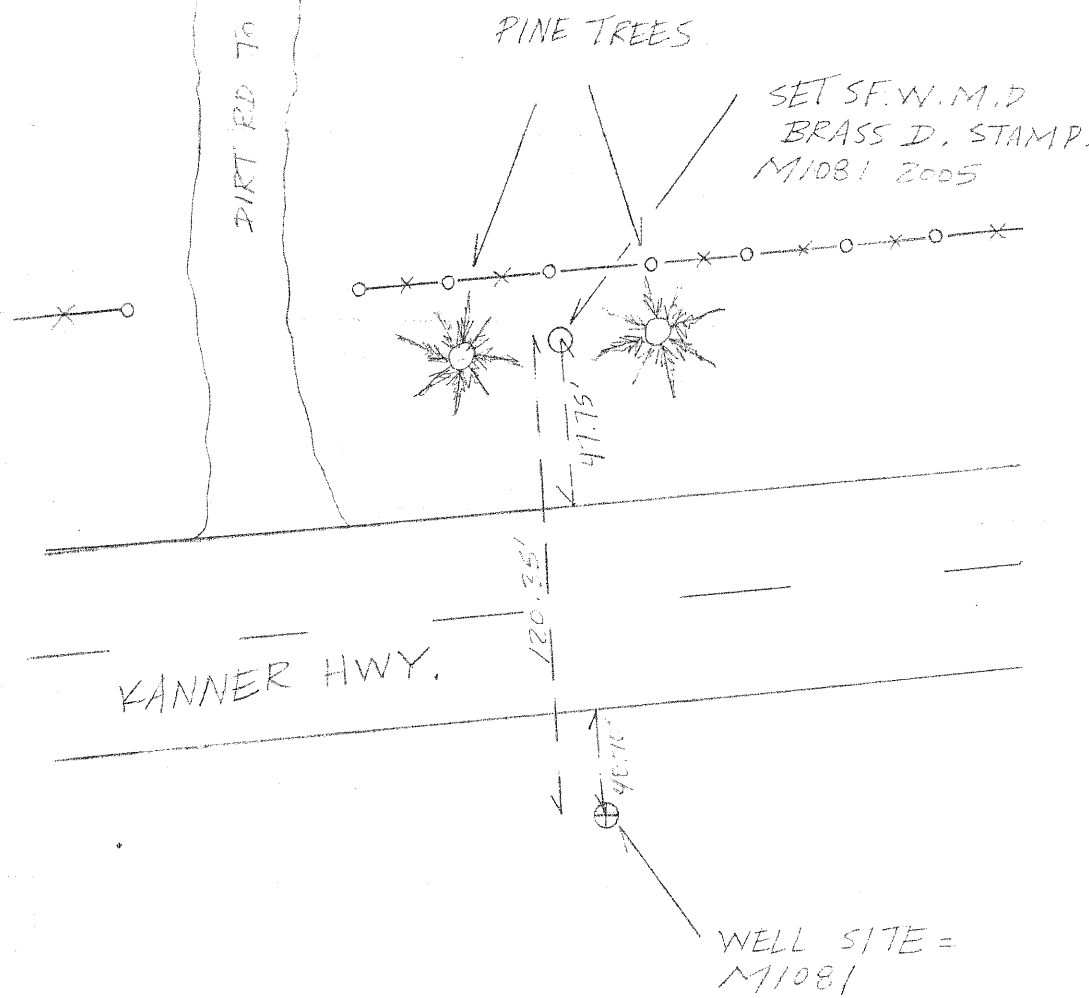
9/2/05

DIRECTIONS - FROM THE INTERSECTION  
OF BEELINE HWY (SR 710) AND  
KANNER HWY (SR 76) TRAVEL  
EAST ON KANNER HWY FOR  
5.35 MILES. THE WELL IS TO  
THE RIGHT IN THE SOUTHERN  
ROADSIDE EASEMENT, DIRECTLY  
ACROSS FROM HOUSE # 5025.  
ABOUT 40.75' SOUTH OF EP.



2545/51

DIRT RD TO HOUSE # 5025



SAME  
CREW

#02-11473  
S.F.W.M.D  
" SITE - I "

9/2/05

(ESTABLISH  
ELEV. ON WELL  
M1045)

STA	BS	MEAN HI	FS	MEAN	B.M. ELEV. ELEV	DESC
	6.755					
B.M.	5.010	5.010	30.740		25.730	M45 #AJ0864 TND DICK #347 40 EAST 595 N. 135 E TRENCH SR 700 AND SR 70 30.4' N OF A SH 110 17.5' S OF NUTBERRY TEST WAVE BR
	3.270					SET CUT NL
TP #1			5.540	4.090	26.650	
			4.970			
			2.640			
SHAPE	5.920	4.340	30.970			SET CUT NL
	4.340					
	2.760					
TP #2			5.280	4.380	26.630	SET CUT NL
			4.360			
			3.440			
SHAPE	4.510	4.135	30.765			SET CUT NL
	4.135					
	3.760					
M1045			6.710	6.315	24.450	TOP OF PIPE WELL - M1045
			3.315			
			5.920			



SAME  
CREW

# 23-77478  
SITE A.M.P

"SITE - J"

9/23/05  
1/1

BLIND GROUT

STA	BS	MEAN	HI	FS	MEAN
SHAKE	6.975 6.470 6.075	6.470	30.920		
TP # 3				4.665 4.285 3.905	4.285
SHAKE	6.000 4.535 3.050	4.535	31.170		
TP # 4				5.960 4.530 3.100	4.530
SHAKE	5.790 4.420 2.850	4.420	31.060		
TP # 5				5.720 4.285 2.850	4.285

ZM  
ELEV ELEV DEISC

TOP OF PIPE WELL = M1045

26.635 ✓ SET CUT NL

SET CUT NL

26.645 ✓ SET CUT NL

SET CUT NL

26.775 ✓ SET CUT NL

SAME  
CRSV.

#03-7713  
S.F.W.M.D.

2/2/05

"SITE-J"

(ELEV. CONT)

STA	BS	MEAN	HI	FS	MEAN	ELEV	BM ELEV	DESC
SHAKE	5.950 4.440 2.930	4.440	31.215	✓				SET CUT NL
TP# 6				5.860 4.340 2.800	4.340	26.875	✓	SET CUT NL
SHAKE	6.130 4.400 2.670	4.400	31.275	✓				SET CUT NL
TP# 7				6.070 4.505 2.940	4.505	26.770	✓	SET CUT NL
SHAKE	6.070 4.370 2.670	4.370	31.140	✓				SET CUT NL
TP# 8				6.320 4.465 2.610	4.465	26.675	✓	SET CUT NL

SADSE  
COPEN

#03-77473  
S. F. W. M. E

9/3/05

"SITE J"

(ELEV. CONT)

STA	BS	MEAN	HI	FS	MEAN	ELEV	BM ELEV	DESS
SHAKE	6.37 4.45 2.93	4.450	31.125					SET CUT NL
TP#9				6.200 4.470 2.740	4.470	26.655 ✓		SET CUT NL
SHAKE	6.385 4.340 2.300	4.340	30.995					SET CUT NL
TP#10				6.150 4.560 2.970	4.560	26.435 ✓		SET CUT NL
SHAKE	6.190 4.395 2.600	4.395	30.830					SET CUT NL
TP#11				5.660 4.215 2.770	4.215	26.615 ✓		SET CUT NL

SAME  
CROSS

#03-77478  
S. F. W. M. D.

"SITE - J"

(ELEV. CONT)

7/3/85

STA	BS	MEAN	HI	FS	MEAN	ELEV	BM ELEV	DESC
SHAKE	6.570 4.415 2.760	4.415	31.030 ✓					SET CUT NL
TP#12				5.720 4.500 3.270	4.500	26.530 ✓		SET CUT NL
SHAKE	5.736 4.210 2.690	4.210	30.740 ✓					SET CUT NL
BM				7.870 5.890 4.720	5.890	24.860 ✓	24.880	NG5# AJ8886 FND FLANGE ENCASED ROD. STAMP. E 247 GO EAST FOR 5 MILES FROM INTER. OF SR 710 AND SR 76. 20.7' N OF C. OF RD. 11.4' S. OF WITNESS POST NAME 88.
						ERR: 0.020		

A. FEDERO  
T. LOPEZ  
M. MOYA

#03-77478  
S.F.W.M.D

"SITE - J"

9/6/05

(ELEV. CONT.)

STA	BS	MEAN	HI	FS	MEAN	ELEV	BM ELEV	DESC
BM	6.550 6.140 5.730	6.140	30.590 ✓				24.450	TOP OF PIPE = M1045
DISC M1045				5.905 5.285 5.165	5.285	25.305 ✓		SET J.F.W.M.D BRASS D. STAMPED M1045 2005
SHAKE	5.910 5.735 5.660	5.735	31.090 ✓					" "
BM				4.670 4.460 4.250	4.460	26.630 ✓	26.630	TP #1 SET CUT NL NO ERROR



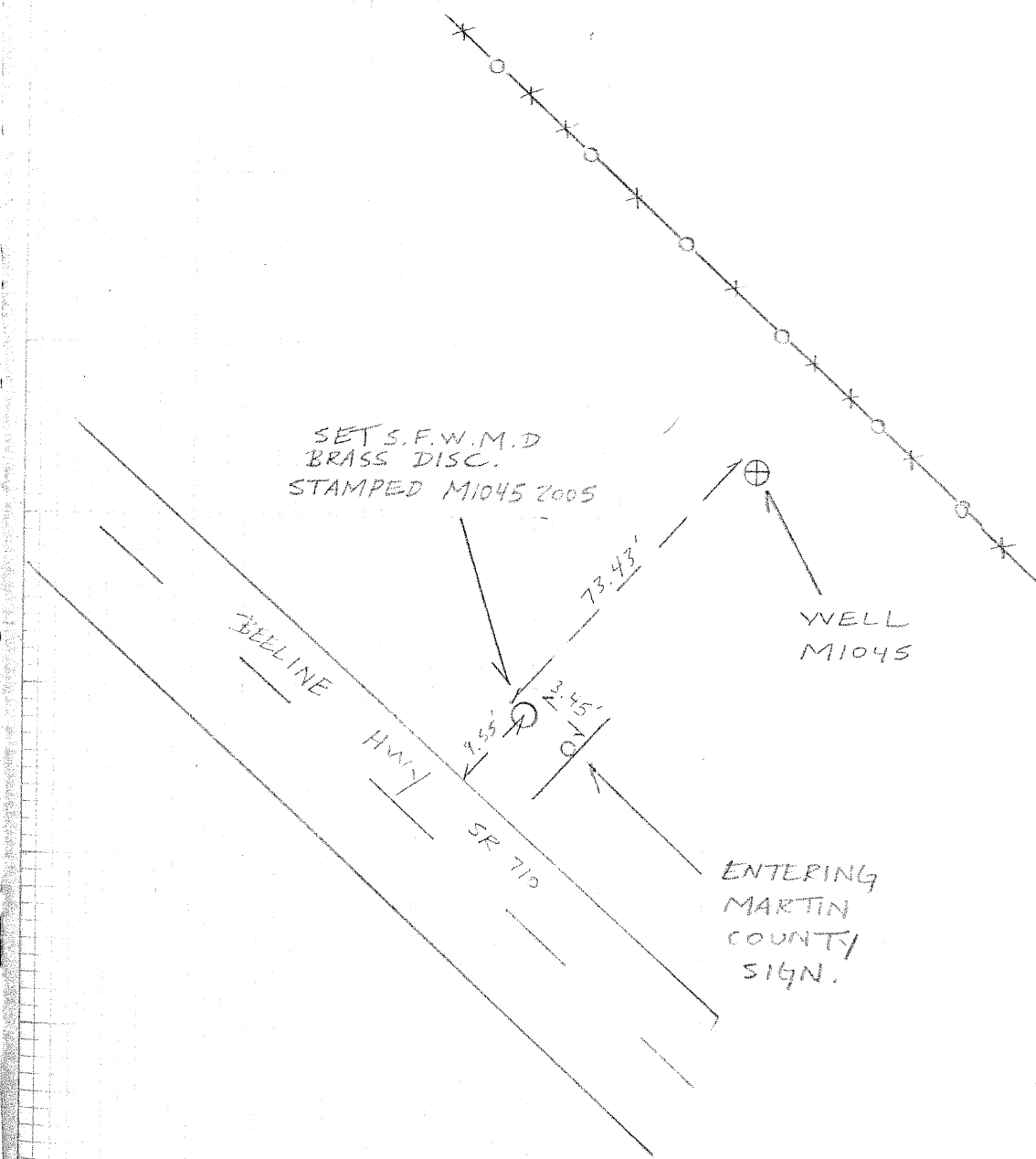
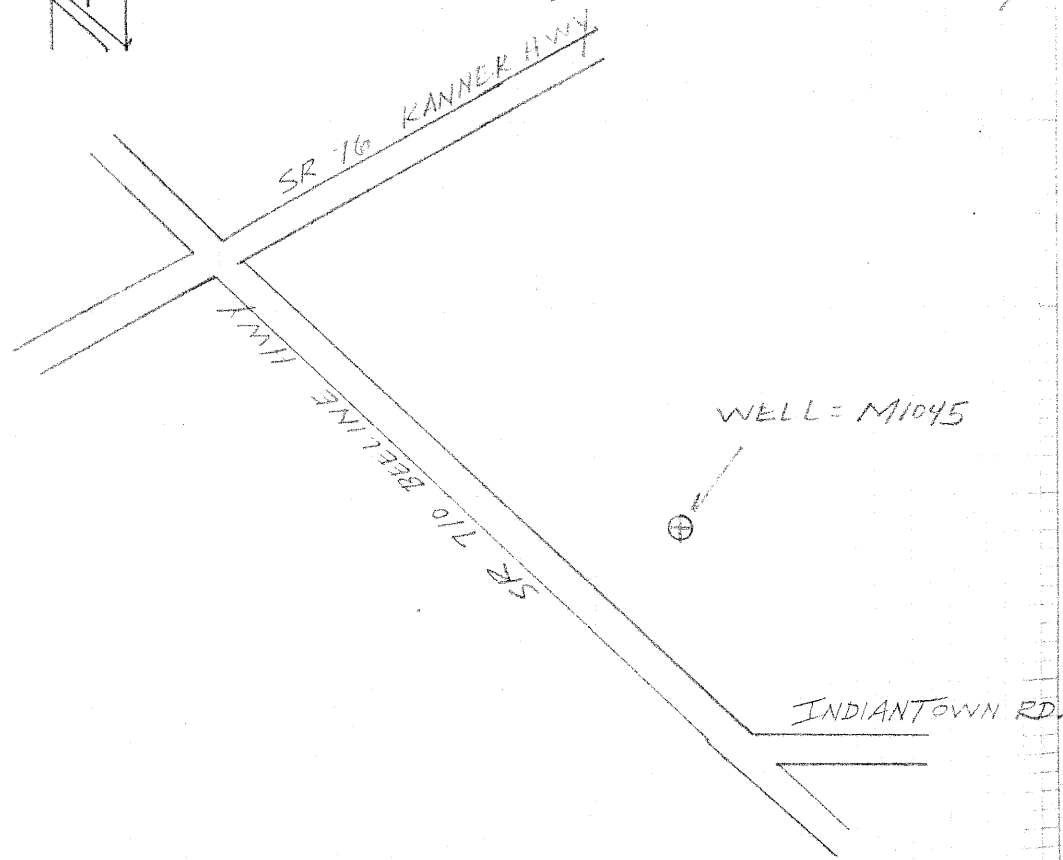
SAME  
CREW

#03-77478  
S.F.W.M.D.

( SITE - J  
DESCRIPTION )

9/6/05

DIRECTIONS - FROM THE INTERSECTION  
OF BEELINE HWY (SR 710)  
AND KANNER HWY (SR 16)  
TRAVEL SOUTHEAST ON  
BEELINE HWY FOR 6.05 MILES.  
THE WELL IS ON THE LEFT  
BY THE SIGN, ENTERING  
MARTIN COUNTY, 83.00' FT.  
NORTHEAST OF EDGE OF  
PAVEMENT, OF BEELINE HWY.

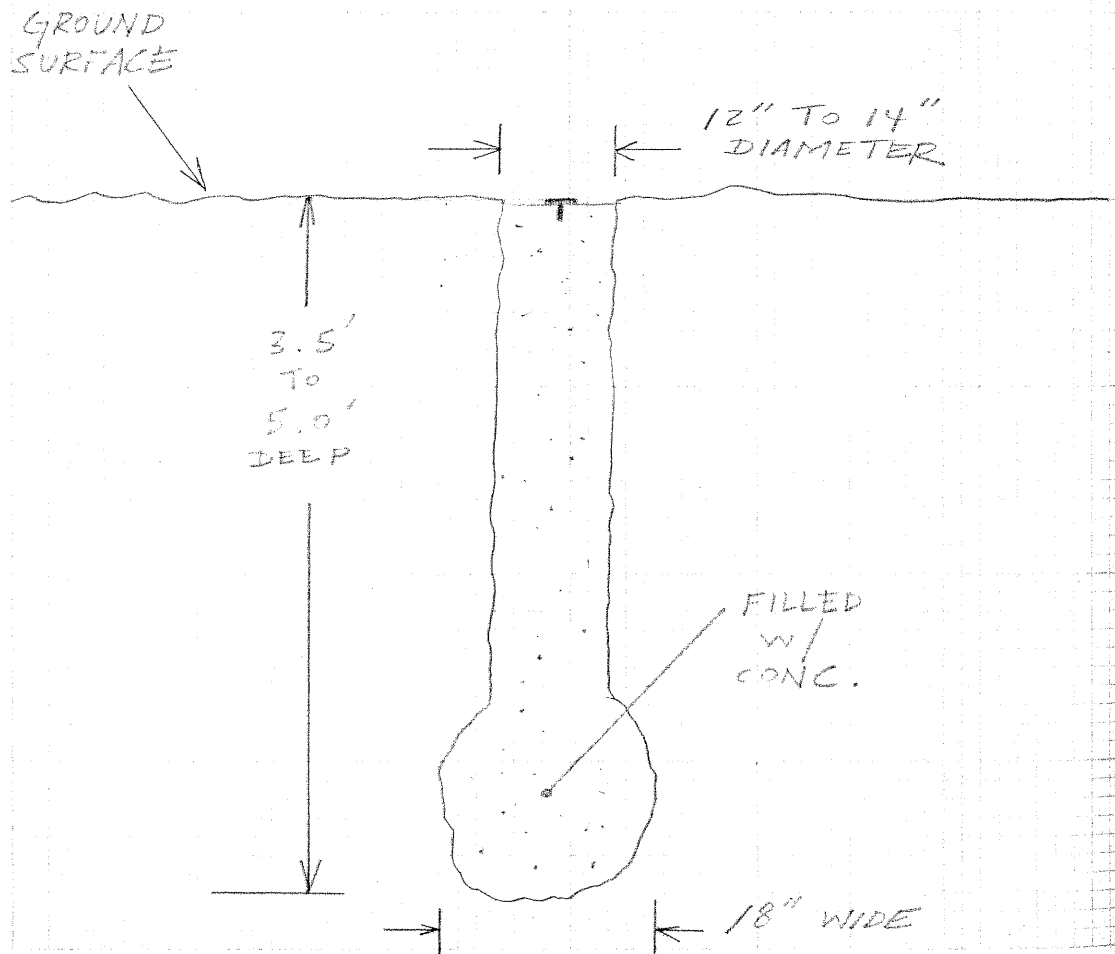


A. REDERO  
T. LOPEZ  
M. MOYA

#05-07718  
S.F.W.M.D.

9/12/05

NOTE: ALL CONCRETE MONUMENTS  
WHERE SET ACCORDING TO  
NGS STANDARDS.





SOUTH FLORIDA WATER MANAGEMENT DISTRICT

Rev. 10/10/05

COUNTY	MARTIN	PROJECT	TEQUESTA PARK	DESIGNATION	M1039 2005
SECTION	<u>19</u>	TOWNSHIP	<u>40S</u>	RANGE	<u>42E</u>
GEOGRAPHIC INDEX OF QUAD <u>Florida</u>					
Established by Biscayne Engineering Company, Inc.			NAME OF QUADRANGLE JUPITER		
SURVEYOR Mike J. Bartholomew DATE <u>09 / 26 / 2005</u>			FIELD BOOK <u>2548</u> PAGE <u>0</u>		
HORIZONTAL DATUM: 1927 <input type="checkbox"/> 1983 <input checked="" type="checkbox"/> Other _____ (circle one) ZONE <u>0901 (EAST)</u>					
VERTICAL DATUM: MSL 1929 <input type="checkbox"/> 1988 <input checked="" type="checkbox"/> Other _____ (circle one)					
CONTROL ACCURACY: HORIZONTAL 1 <input type="checkbox"/> 2 <input type="checkbox"/> 3 <input checked="" type="checkbox"/> SUB-METER (circle one) VERTICAL 1 <input type="checkbox"/> 2 <input type="checkbox"/> 3 <input checked="" type="checkbox"/>					
STATE PLANE COORDINATES M1039 (U.S. Survey feet)		X= <u>952324.89</u>	Y= <u>960410.86</u>	DISC EL.= <u>22.37'</u> (NAVD-88)	
LATITUDE M1039 26°58'22.682"N			LONGITUDE 080°05'26.584"W		
<b>DESCRIPTION</b>					
Benchmark is situated West of U.S. 1 and North of County Line Road in Section 19-T40S-R42E, Martin County, Florida					
<b>TO REACH</b> the benchmark from the intersection of US-1 and County Line Road in Tequesta, Florida, travel West on County Line Road for 0.2 miles to the entrance of Tequesta Park on the right (North). Turn right and enter the park. Immediately after entering the park, there is a sandy trail to the right (east) which circles the park. Turn right and follow the sandy trail for 0.2 miles to the benchmark on the left side of the trail. Benchmark is a standard aluminum SFWMD disc set in the South side of the concrete encasement for tape down well M1039, lying 10 feet (more or less) West of the centerline of said trail					
Note: Origin of NAVD88 elevation for BM "M1039" is closed bench level circuit through NGS benchmarks AD6243 (MAR 10 FLDNR) and AJ5245 (GCY D02)					

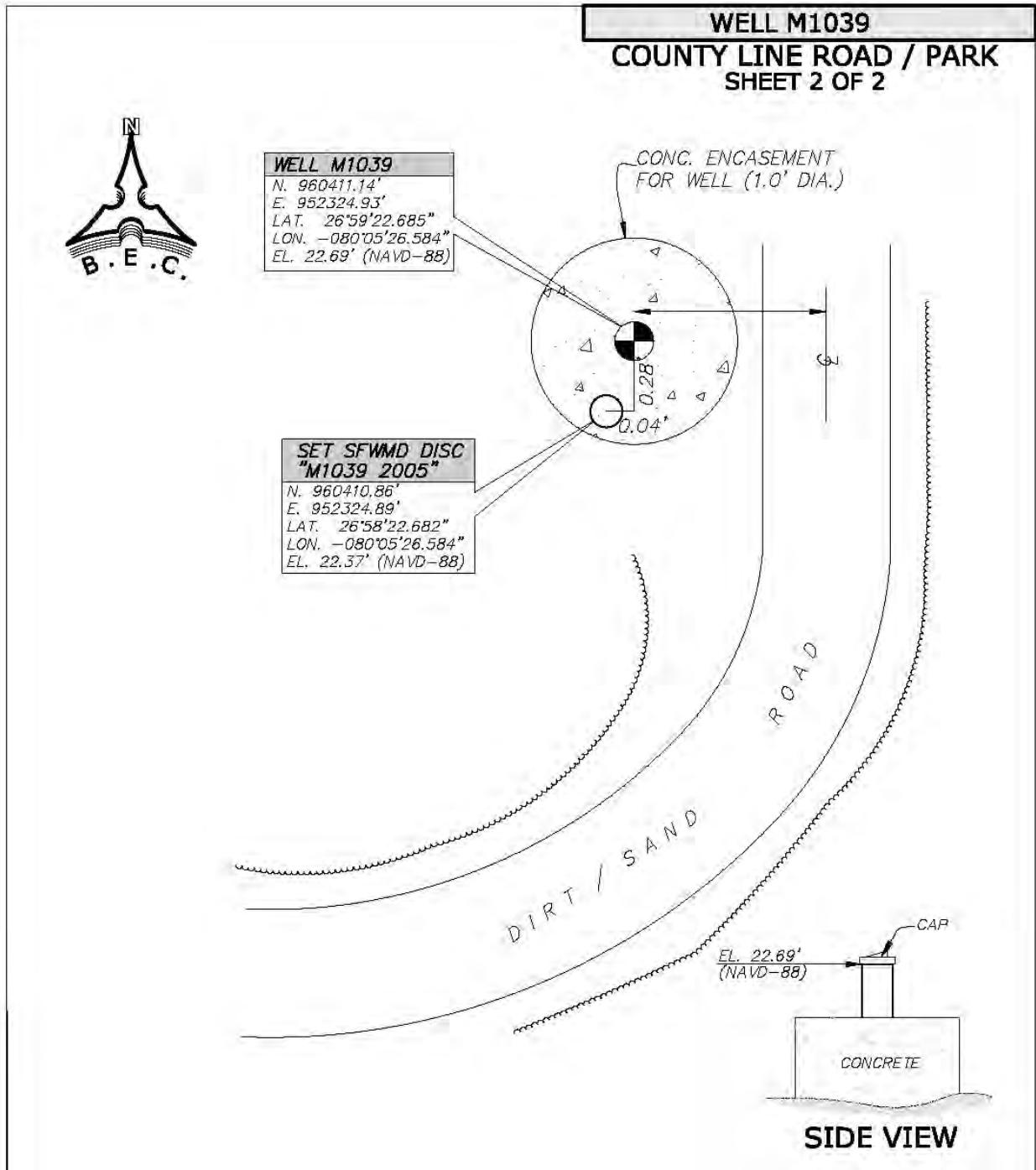
SKETCH: SEE PAGE 2 and 3






**SOUTH FLORIDA WATER MANAGEMENT DISTRICT**

Rev. 10/10/05



<b>WELL M1039</b>		<b>MARTIN COUNTY TAPE DOWN WELLS</b>	
PREPARED FOR: <b>SOUTH FLORIDA WATER MANAGEMENT DISTRICT</b>		FIELD BOOK: 2548	DATE: 10/10/05
		ORDER NO.: 03-77478	
PREPARED BY: <b>BISCAYNE ENGINEERING COMPANY, INC.</b> Consulting Engineers    Planners    Surveyors 529 WEST FLAGLER STREET, MIAMI, FL. 33130    TEL (305)324-7671    FAX (305)324-0809 LB #0129			

## The NGS Data Sheet

See file [dsdata.txt](#) for more information about the datasheet.

DATABASE = Sybase ,PROGRAM = datasheet, VERSION = 7.27

1 National Geodetic Survey, Retrieval Date = SEPTEMBER 20, 2005

AD6243 \*\*\*\*\*

AD6243 DESIGNATION - MAR 10 FLDNR

AD6243 PID - AD6243

AD6243 STATE/COUNTY- FL/MARTIN

AD6243 USGS QUAD - JUPITER (1983)

AD6243

AD6243 \*CURRENT SURVEY CONTROL

AD6243

AD6243\* NAD 83(1986)- 26 58 13. (N) 080 05 16. (W) SCALED

AD6243\* NAVD 88 - 4.582 (meters) 15.03 (feet) ADJUSTED

AD6243

AD6243 GEOID HEIGHT- -27.48 (meters) GEOID03

AD6243 DYNAMIC HT - 4.575 (meters) 15.01 (feet) COMP

AD6243 MODELED GRAV- 979,092.1 (mgal) NAVD 88

AD6243

AD6243 VERT ORDER - SECOND CLASS I

AD6243

AD6243.The horizontal coordinates were scaled from a topographic map and have  
AD6243.an estimated accuracy of +/- 6 seconds.

AD6243

AD6243.The orthometric height was determined by differential leveling  
AD6243.and adjusted by the National Geodetic Survey in June 1991.

AD6243

AD6243.The geoid height was determined by GEOID03.

AD6243

AD6243.The dynamic height is computed by dividing the NAVD 88

AD6243.geopotential number by the normal gravity value computed on the  
AD6243.Geodetic Reference System of 1980 (GRS 80) ellipsoid at 45

AD6243.degrees latitude (g = 980.6199 gals.).

AD6243

AD6243.The modeled gravity was interpolated from observed gravity values.

AD6243

AD6243; North East Units Estimated Accuracy

AD6243;SPC FL E - 292,440. 290,560. MT (+/- 180 meters Scaled)

AD6243

AD6243 SUPERSEDED SURVEY CONTROL

AD6243

AD6243 NGVD 29 (09/01/92) 5.036 (m) 16.52 (f) ADJUSTED 2 1

AD6243

AD6243.Superseded values are not recommended for survey control.

AD6243.NGS no longer adjusts projects to the NAD 27 or NGVD 29 datums.

AD6243.[See file dsdata.txt](#) to determine how the superseded data were derived.

AD6243

AD6243\_U.S. NATIONAL GRID SPATIAL ADDRESS: 17RNK905834(NAD 83)

AD6243\_MARKER: DB = BENCH MARK DISK

AD6243\_SETTING: 7 = SET IN TOP OF CONCRETE MONUMENT

AD6243\_SP\_SET: CONCRETE POST

AD6243\_STAMPING: MAR 10 1980 BSM

AD6243\_MARK LOGO: FLDNR

AD6243\_PROJECTION: FLUSH

AD6243\_STABILITY: C = MAY HOLD, BUT OF TYPE COMMONLY SUBJECT TO



AD6243+STABILITY: SURFACE MOTION

AD6243\_SATELLITE: THE SITE LOCATION WAS REPORTED AS SUITABLE FOR

AD6243+SATELLITE: SATELLITE OBSERVATIONS - October 02, 2003

AD6243

AD6243	HISTORY	- Date	Condition	Report By
AD6243	HISTORY	- 1980	MONUMENTED	FLDNR
AD6243	HISTORY	- 20031002	GOOD	USPSQD

AD6243

AD6243 STATION DESCRIPTION

AD6243

AD6243'DESCRIBED BY FL DEPT OF NAT RES 1980

AD6243'2.4 MI NORTH FROM JUPITER.

AD6243'BEGIN AT THE NORTH END OF THE U.S. HIGHWAY 1 BRIDGE OVER THE

AD6243'LOXAHATCHEE RIVER, PROCEED NORTH 1.65 MILES ALONG U.S. HIGHWAY 1 TO

AD6243'THE MARK. THE MARK BEARS 78.2 FEET WEST OF THE U.S. 1 SOUTHBOUND LANE

AD6243'CENTERLINE, 2.2 FEET EAST OF THE SOUTHEAST CORNER OF A 6-FOOT HIGH

AD6243'CHAIN-LINK FENCE, ABOUT 450 FEET NORTH OF THE MARTIN/PALM BEACH COUNTY

AD6243'LINE, AND 2.2 FEET EAST OF A WITNESS POST.

AD6243

AD6243 STATION RECOVERY (2003)

AD6243

AD6243'RECOVERY NOTE BY US POWER SQUADRON 2003 (AEP)

AD6243'RECOVERED IN GOOD CONDITION.

\*\*\* retrieval complete.

Elapsed Time = 00:00:00

From the "ngvd29.txt" file provided by NGS for the CERP Geodetic Vertical Control Project.  
 Line/Part: L26233 SSN+: mark floated, SSN\*: mark constrained, SSN#: mark floated & constrained

Mark ID SSN PID Designation Geopotential Elevation Codes  
 1684 9006 AJ5245 GCY D02 3.2186 3.2842

# The NGS Data Sheet

See file [dsdata.txt](#) for more information about the datasheet.

DATABASE = Sybase ,PROGRAM = datasheet, VERSION = 7.27

1 National Geodetic Survey, Retrieval Date = SEPTEMBER 20, 2005

AJ5245 \*\*\*\*\*

AJ5245 DESIGNATION - GCY D02

AJ5245 PID - AJ5245

AJ5245 STATE/COUNTY- FL/MARTIN

AJ5245 USGS QUAD - JUPITER (1983)

AJ5245

AJ5245 \*CURRENT SURVEY CONTROL

AJ5245

AJ5245\* NAD 83(1999)- 26 58 28.36610(N) 080 06 33.05005(W) ADJUSTED

AJ5245\* NAVD 88 - 2.830 (meters) 9.28 (feet) ADJUSTED

AJ5245

AJ5245 X - 977,059.668 (meters) COMP

AJ5245 Y - -5,603,600.599 (meters) COMP

AJ5245 Z - 2,875,691.177 (meters) COMP

AJ5245 LAPLACE CORR- -4.18 (seconds) DEFLEC99

AJ5245 ELLIP HEIGHT- -24.57 (meters) (09/27/01) GPS OBS

AJ5245 GEOID HEIGHT- -27.41 (meters) GEOID03

AJ5245 DYNAMIC HT - 2.826 (meters) 9.27 (feet) COMP

AJ5245 MODELED GRAV- 979,093.9 (mgal) NAVD 88

AJ5245

AJ5245 HORZ ORDER - FIRST

AJ5245 VERT ORDER - FIRST CLASS II

AJ5245 ELLP ORDER - FOURTH CLASS II

AJ5245

AJ5245.The horizontal coordinates were established by GPS observations

AJ5245.and adjusted by the National Geodetic Survey in September 2001.

AJ5245

AJ5245.The orthometric height was determined by differential leveling

AJ5245.and adjusted by the National Geodetic Survey in October 2001.

AJ5245.No vertical observational check was made to the station.

AJ5245

AJ5245.The X, Y, and Z were computed from the position and the ellipsoidal ht.

AJ5245

AJ5245.The Laplace correction was computed from DEFLEC99 derived deflections.

AJ5245

AJ5245.The ellipsoidal height was determined by GPS observations

AJ5245.and is referenced to NAD 83.

AJ5245

AJ5245.The geoid height was determined by GEOID03.

AJ5245

AJ5245.The dynamic height is computed by dividing the NAVD 88

AJ5245.geopotential number by the normal gravity value computed on the

AJ5245.Geodetic Reference System of 1980 (GRS 80) ellipsoid at 45

AJ5245.degrees latitude (g = 980.6199 gals.).

AJ5245

AJ5245.The modeled gravity was interpolated from observed gravity values.

AJ5245

AJ5245; North East Units Scale Factor Converg.

AJ5245;SPC FL E - 292,895.700 288,434.993 MT 1.00003769 +0 24 14.7

AJ5245;UTM 17 - 2,983,927.746 588,404.820 MT 0.99969648 +0 24 14.7

AJ5245

AJ5245! - Elev Factor x Scale Factor = Combined Factor  
 AJ5245!SPC FL E - 1.00000386 x 1.00003769 = 1.00004155  
 AJ5245!UTM 17 - 1.00000386 x 0.99969648 = 0.99970034  
 AJ5245  
 AJ5245: Primary Azimuth Mark Grid Az  
 AJ5245:SPC FL E - GCY D01 001 31 12.0  
 AJ5245:UTM 17 - GCY D01 001 31 12.0

AJ5245  
 AJ5245 |-----|  
 AJ5245 | PID Reference Object Distance Geod. Az |  
 AJ5245 | | | | dddmmss.s |  
 AJ5245 | AJ5244 GCY D01 APPROX. 0.7 KM 0015526.7 |  
 AJ5245 |-----|

AJ5245  
 AJ5245 SUPERSEDED SURVEY CONTROL  
 AJ5245  
 AJ5245.No superseded survey control is available for this station.  
 AJ5245

AJ5245\_U.S. NATIONAL GRID SPATIAL ADDRESS: 17RNK8840583928(NAD 83)  
 AJ5245\_MARKER: DH = HORIZONTAL CONTROL DISK  
 AJ5245\_SETTING: 7 = SET IN TOP OF CONCRETE MONUMENT  
 AJ5245\_STAMPING: GCY D02 2001  
 AJ5245\_MARK LOGO: FL-085  
 AJ5245\_PROJECTION: FLUSH  
 AJ5245\_MAGNETIC: M = MARKER EQUIPPED WITH BAR MAGNET  
 AJ5245\_STABILITY: C = MAY HOLD, BUT OF TYPE COMMONLY SUBJECT TO  
 AJ5245+STABILITY: SURFACE MOTION  
 AJ5245\_SATELLITE: THE SITE LOCATION WAS REPORTED AS SUITABLE FOR  
 AJ5245+SATELLITE: SATELLITE OBSERVATIONS - October 03, 2003

AJ5245  
 AJ5245 HISTORY - Date Condition Report By  
 AJ5245 HISTORY - 20010501 MONUMENTED GCYI  
 AJ5245 HISTORY - 20010718 GOOD GCYI  
 AJ5245 HISTORY - 20031003 GOOD USPSQD

AJ5245  
 AJ5245 STATION DESCRIPTION  
 AJ5245  
 AJ5245'DESCRIBED BY G.C.Y., INCORPORATED 2001 (MDL)  
 AJ5245'STATION IS LOCATED ABOUT 5.4 KM (3.3 MI) NORTHWEST OF JUPITER AND 9.2  
 AJ5245'KM (5.7  
 AJ5245'MI) SOUTHEAST OF HOBE SOUND IN SECTION 24, TOWNSHIP 40 SOUTH, RANGE 42  
 AJ5245'EAST.  
 AJ5245'  
 AJ5245'TO REACH THE STATION FROM THE INTERSECTION OF U.S. HIGHWAY 1 AND  
 AJ5245'COUNTY LINE ROAD IN TEQUESTA, GO WEST ON COUNTY LINE ROAD 2.15 KM  
 AJ5245'(1.34 MI)  
 AJ5245'THEN TURN NORTH ON COUNTY LINE ROAD AND GO 0.43 KM (0.27 MI) TO THE  
 AJ5245'STATION ON THE LEFT.  
 AJ5245'  
 AJ5245'THE STATION IS LOCATED 9.0 M (29.6 FT) WEST OF THE WEST EDGE OF  
 AJ5245'PAVEMENT  
 AJ5245'OF COUNTY LINE ROAD AND 2.5 M (8.2 FT) SOUTH OF A CARSONITE WITNESS  
 AJ5245'POST.  
 AJ5245'REFERENCES-  
 AJ5245'GCY, INC MAG NAIL AND WASHER IN EAST SIDE OF 10 INCH PINE TREE -30  
 AJ5245'DEG. MAG.  
 AJ5245'AZ.-  
 AJ5245'13.92 M (45.58 FT)  
 AJ5245'GCY, INC MAG NAIL AND WASHER IN EAST SIDE OF 8 INCH PINE TREE -145 DEG.  
 AJ5245'MAG.



From the "ngvd29.txt" file provided by NGS for the CERP Geodetic Vertical Control Project.  
 Line/Part: L26233 SSN+: mark floated, SSN\*: mark constrained, SSN#: mark floated  
 & constrained

Mark ID SSN PID Designation Geopotential Elevation Codes  
 1685 9007 AJ5244 GCY D01 3.4105 3.4801

## The NGS Data Sheet

See file [dsdata.txt](#) for more information about the datasheet.

DATABASE = Sybase ,PROGRAM = datasheet, VERSION = 7.27

1 National Geodetic Survey, Retrieval Date = SEPTEMBER 20, 2005

AJ5244 \*\*\*\*\*

AJ5244 DESIGNATION - GCY D01

AJ5244 PID - AJ5244

AJ5244 STATE/COUNTY- FL/MARTIN

AJ5244 USGS QUAD - JUPITER (1983)

AJ5244

AJ5244 \*CURRENT SURVEY CONTROL

AJ5244

AJ5244\* NAD 83(1999)- 26 58 50.56217(N) 080 06 32.21778(W) ADJUSTED

AJ5244\* NAVD 88 - 3.026 (meters) 9.93 (feet) ADJUSTED

AJ5244

AJ5244 X - 977,029.071 (meters) COMP

AJ5244 Y - -5,603,291.509 (meters) COMP

AJ5244 Z - 2,876,300.082 (meters) COMP

AJ5244 LAPLACE CORR- -4.19 (seconds) DEFLEC99

AJ5244 ELLIP HEIGHT- -24.39 (meters) (09/27/01) GPS OBS

AJ5244 GEOID HEIGHT- -27.44 (meters) GEOID03

AJ5244 DYNAMIC HT - 3.022 (meters) 9.91 (feet) COMP

AJ5244 MODELED GRAV- 979,093.8 (mgal) NAVD 88

AJ5244

AJ5244 HORZ ORDER - FIRST

AJ5244 VERT ORDER - FIRST CLASS II

AJ5244 ELLP ORDER - FOURTH CLASS II

AJ5244

AJ5244.The horizontal coordinates were established by GPS observations

AJ5244.and adjusted by the National Geodetic Survey in September 2001.

AJ5244

AJ5244.The orthometric height was determined by differential leveling

AJ5244.and adjusted by the National Geodetic Survey in October 2001.

AJ5244.No vertical observational check was made to the station.

AJ5244

AJ5244.The X, Y, and Z were computed from the position and the ellipsoidal ht.

AJ5244

AJ5244.The Laplace correction was computed from DEFLEC99 derived deflections.

AJ5244

AJ5244.The ellipsoidal height was determined by GPS observations

AJ5244.and is referenced to NAD 83.

AJ5244

AJ5244.The geoid height was determined by GEOID03.

AJ5244

AJ5244.The dynamic height is computed by dividing the NAVD 88

AJ5244.geopotential number by the normal gravity value computed on the

AJ5244.Geodetic Reference System of 1980 (GRS 80) ellipsoid at 45

AJ5244.degrees latitude (g = 980.6199 gals.).

AJ5244

AJ5244.The modeled gravity was interpolated from observed gravity values.

AJ5244

AJ5244; North East Units Scale Factor Converg.

AJ5244;SPC FL E - 293,579.036 288,453.125 MT 1.00003773 +0 24 15.4

AJ5244;UTM 17 - 2,984,610.849 588,422.945 MT 0.99969652 +0 24 15.4

AJ5244

AJ5244! - Elev Factor x Scale Factor = Combined Factor  
 AJ5244!SPC FL E - 1.00000383 x 1.00003773 = 1.00004156  
 AJ5244!UTM 17 - 1.00000383 x 0.99969652 = 0.99970035

AJ5244  
 AJ5244: Primary Azimuth Mark Grid Az  
 AJ5244:SPC FL E - GCY D02 181 31 11.6  
 AJ5244:UTM 17 - GCY D02 181 31 11.6

AJ5244  
 AJ5244 |-----|  
 AJ5244 | PID Reference Object Distance Geod. Az |  
 AJ5244 | | | | dddmmss.s |  
 AJ5244 | AJ5245 GCY D02 APPROX. 0.7 KM 1815527.0 |  
 AJ5244 |-----|

AJ5244  
 AJ5244 SUPERSEDED SURVEY CONTROL  
 AJ5244  
 AJ5244.No superseded survey control is available for this station.  
 AJ5244

AJ5244\_U.S. NATIONAL GRID SPATIAL ADDRESS: 17RNK8842384611(NAD 83)  
 AJ5244\_MARKER: F = FLANGE-ENCASED ROD  
 AJ5244\_SETTING: 49 = STAINLESS STEEL ROD W/O SLEEVE (10 FT.+)  
 AJ5244\_STAMPING: GCY D01 2001  
 AJ5244\_MARK LOGO: FL-085  
 AJ5244\_PROJECTION: FLUSH  
 AJ5244\_MAGNETIC: M = MARKER EQUIPPED WITH BAR MAGNET  
 AJ5244\_STABILITY: B = PROBABLY HOLD POSITION/ELEVATION WELL  
 AJ5244\_SATELLITE: THE SITE LOCATION WAS REPORTED AS SUITABLE FOR  
 AJ5244+SATELLITE: SATELLITE OBSERVATIONS - October 03, 2003  
 AJ5244\_ROD/PIPE-DEPTH: 16.5 meters

AJ5244  
 AJ5244 HISTORY - Date Condition Report By  
 AJ5244 HISTORY - 20010510 MONUMENTED GCYI  
 AJ5244 HISTORY - 20010718 GOOD GCYI  
 AJ5244 HISTORY - 20020606 GOOD JCLS  
 AJ5244 HISTORY - 20031003 GOOD USPSQD

AJ5244  
 AJ5244 STATION DESCRIPTION

AJ5244'DESCRIBED BY G.C.Y., INCORPORATED 2001 (KFK)  
 AJ5244'STATION IS LOCATED ABOUT 5.4 KM (3.3 MI) NORTHWEST OF JUPITER AND 9.2  
 AJ5244'KM (5.7  
 AJ5244'MI) SOUTHEAST OF HOBE SOUND IN SECTION 24, TOWNSHIP 40 SOUTH, RANGE 42  
 AJ5244'EAST.  
 AJ5244'  
 AJ5244'TO REACH THE STATION FROM THE INTERSECTION OF U.S. HIGHWAY 1 AND  
 AJ5244'COUNTY LINE ROAD IN TEQUESTA, GO WEST ON COUNTY LINE ROAD 2.15 KM  
 AJ5244'(1.34 MI)  
 AJ5244'THEN TURN NORTH ON COUNTY LINE ROAD AND GO 1.12 KM (0.69 MI) TO THE  
 AJ5244'STATION ON THE RIGHT.  
 AJ5244'  
 AJ5244'THE STATION IS LOCATED 3.6 M (11.7 FT) EAST OF THE EAST EDGE OF  
 AJ5244'PAVEMENT OF  
 AJ5244'COUNTY LINE ROAD AND 0.4 M (1.3 FT) WEST OF A CARSONITE WITNESS POST.  
 AJ5244'IN  
 AJ5244'FRONT OF MARTIN COUNTY FIRE STATION 36 AT 18405 COUNTY LINE ROAD.  
 AJ5244'REFERENCES-  
 AJ5244'GCY, INC MAG NAIL AND WASHER IN EAST SIDE OF 14 INCH PINE TREE - 201  
 AJ5244'DEG. MAG.  
 AJ5244'AZ.,  
 AJ5244'42.12 M (138.2 FT) GCY, INC MAG NAIL AND WASHER IN SOUTH SIDE OF 12



AJ5244' INCH PINE  
AJ5244'TREE - 291 DEG. MAG. AZ., 18.78 M (61.6 FT)- GCY, INC MAG NAIL AND  
AJ5244'WASHER IN WEST  
AJ5244'SIDE OF A WOOD POWER POLE - 357 DEG. MAG. AZ. - 30.78 M (101 FT).  
AJ5244'  
AJ5244'NOTE-  
AJ5244'DEEP ONE MAGNET PLACED IN PVC ON NORTH SIDE OF STAINLESS STEEL ROD.  
AJ5244'  
AJ5244'  
AJ5244'  
AJ5244'  
AJ5244'  
AJ5244  
AJ5244 STATION RECOVERY (2001)  
AJ5244  
AJ5244'RECOVERY NOTE BY G.C.Y., INCORPORATED 2001 (KFK)  
AJ5244'RECOVERED AS DESCRIBED.  
AJ5244  
AJ5244 STATION RECOVERY (2002)  
AJ5244  
AJ5244'RECOVERY NOTE BY JOHN CHANCE LAND SURVEYS INC 2002  
AJ5244'RECOVERED IN GOOD CONDITION.  
AJ5244  
AJ5244 STATION RECOVERY (2003)  
AJ5244  
AJ5244'RECOVERY NOTE BY US POWER SQUADRON 2003 (AEP)  
AJ5244'  
AJ5244'  
AJ5244'

\*\*\* retrieval complete.  
Elapsed Time = 00:00:00

**LEVEL RUN**

DATE	STA	BS	MEAN	HI	FS	MEAN	ELEV	BM ELEV. NAVD-88	NOTES
	NGS BM	9.37							
08/03/05	AD6243	7.41	7.41	22.44				15.03	
	MAR 10 FLDNR	5.45							
					1.33				
(FB 2548, PG 00...)	TP#1				0.72	0.72	21.72		
					0.11				
		8.17							
	SHAKE	6.69	6.69	28.41					
		5.21							
					10.79				
	TP#2				9.35	9.35	19.06		
					7.91				
		3.81							
	SHAKE	2.26	2.26	21.32					
		0.71							
					8.92				
	TP#3				7.40	7.40	13.92		
					5.88				
		5.54							
	SHAKE	4.69	4.69	18.61					
		3.83							
					1.96				
	TP#4				1.22	1.22	17.39		
					0.47				
		7.27							
	SHAKE	6.54	6.54	23.93					
		5.81							
					5.50				
	TP#5				4.06	4.06	19.87		
					2.62				
		5.59							
	SHAKE	4.64	4.64	24.51					
		3.70							
					3.75				
	TP#6				2.76	2.76	21.76		
					1.76				
		3.47							
	SHAKE	2.98	2.98	24.74					
		2.49							
	WELL				2.77				TOP OF PIPE
	M 1039				2.05	2.05	22.69		WELL
					1.33				M 1039
		2.35							
	SHAKE	1.63	1.63	24.32					
		0.91							
					3.05				
	TP#7				2.56	2.56	21.76		
					2.07				

LEVEL RUN

DATE	STA	BS	MEAN	HI	FS	MEAN	ELEV	BM ELEV. NAVD-88	NOTES
		3.64							
	<b>SHAKE</b>	2.65	2.65	24.41					
		1.66							
					5.48				
	<b>TP#8</b>				4.53	4.53	19.88		
					3.58				
		5.51							
	<b>SHAKE</b>	4.07	4.07	23.95					
		2.63							
					7.28				
	<b>TP#9</b>				6.55	6.55	17.40		
					5.82				
		2.34							
	<b>SHAKE</b>	1.65	1.65	19.05					
		0.96							
					6.01				
	<b>TP#10</b>				5.12	5.12	13.93		
					4.23				
		7.13							
	<b>SHAKE</b>	5.71	5.71	19.64					
		4.29							
					8.06				
	<b>TP#11</b>				6.42	6.42	13.22		
					4.78				
		5.95							
	<b>SHAKE</b>	4.50	4.50	17.72					
		3.04							
					6.00				
	<b>TP#12</b>				4.78	4.78	12.94		
					3.56				
		7.16							
	<b>SHAKE</b>	5.92	5.92	18.86					
		4.68							
					11.75				
	<b>TP#13</b>				10.05	10.05	8.81		
					8.35				
		6.59							
	<b>SHAKE</b>	5.29	5.29	14.10					
		3.99							
					7.79				
	<b>TP#14</b>				5.85	5.85	8.25		
					3.90				
		6.87							
	<b>SHAKE</b>	5.36	5.36	13.61					
		3.85							
					5.38				
	<b>TP#15</b>				3.43	3.43	10.18		
					1.48				

LEVEL RUN

DATE	STA	BS	MEAN	HI	FS	MEAN	ELEV	BM ELEV. NAVD-88	NOTES
		4.33							
	SHAKE	2.82	2.82	13.00					
		1.31							
					7.46				
	TP#16				5.66	5.66	7.34		
					3.86				
		6.29							
	SHAKE	4.79	4.79	12.13					
		3.29							
					5.15				
	TP#17				3.31	3.31	8.83		
					1.46				
		9.60							
	SHAKE	8.10	8.10	16.93					
		6.60							
					12.75				
	TP#18				10.56	10.56	6.37		
					8.37				
		7.55							
	SHAKE	5.31	5.31	11.68					
		3.07							
					7.75				
	TP#19				5.83	5.83	5.85		
					3.90				
		7.87							
	SHAKE	6.36	6.36	12.21					
		4.84							
					5.89				
	TP#20				3.87	3.87	8.34		
					1.85				
		7.32							
	SHAKE	6.39	6.39	14.72					
		5.45							
	NGS BM				6.04				ERROR
	AJ5245				5.46	5.46	9.26	9.28	0.020
	GCY D02				4.88				
		3.61							TOP OF PIPE
	WELL	3.43	3.43	26.11				22.69	WELL
	M 1039	3.25							M 1039
	BM				3.92				SET SFWMD
	DISC				3.74	3.74	22.37		DISK STAMPED
	M 1039				3.56				M 1039 2005
		3.32							
	SHAKE	3.14	3.14	25.51					
		2.96							
(FB-2548,					3.87				ERROR
PG 07)	BM				3.76	3.76	21.76	21.76	0.000
08/03/05	TP#6				3.65				