

Identification\_Information:  
Citation:

**Mike J. Bartholomew**  
**Biscayne Engineering**

Citation\_Information:  
Originator: Mike J. Bartholomew  
Publication\_Date: Unpublished material  
Publication\_Time: Unknown  
Title: Martin County Tape Down Wells (M1081)  
Edition: 1.0  
Series\_Information:  
Publication\_Information:  
Larger\_Work\_Citation:  
Citation\_Information:  
Series\_Information:  
Publication\_Information:

Description:

**Purpose**

Abstract: Kanner Highway, Martin County, Florida  
Purpose:  
To establish elevations on the well and on a disc set across the street and adjacent to the well and provide the results in NAVD-88 format in accordance with the CERP height modernization program

Supplemental\_Information: None

Time\_Period\_of\_Content:

Time\_Period\_Information:  
Single\_Date/Time:  
Range\_of\_Dates/Times:  
Beginning\_Date: 20050801  
Ending\_Date: 20050901

**Survey Date**

Multiple\_Dates/Times:  
Currentness\_Reference: Date and Time Range of Field/Office Work

Status:

Progress: Complete  
Maintenance\_and\_Update\_Frequency: Unknown

Spatial\_Domain:

Bounding\_Coordinates:  
West\_Bounding\_Coordinate: -080° 22' 18"  
East\_Bounding\_Coordinate: -080° 22' 18"  
North\_Bounding\_Coordinate: +27° 02' 23"  
South\_Bounding\_Coordinate: +27° 02' 23"

Keywords:

Theme:  
Theme\_Keyword\_Thesaurus: None  
Theme\_Keyword: Well Site  
Theme\_Keyword: MARTIN  
Theme\_Keyword: M1081

Place:

Place\_Keyword\_Thesaurus: None  
Place\_Keyword: Well Site  
Place\_Keyword: Martin County, Florida  
Place\_Keyword: Kanner Highway  
Place\_Keyword: Sec. 31, Twp. 39S, Rge. 40 E

Stratum:

Temporal:

Access\_Constraints: None

Use\_Constraints: None

Point\_of\_Contact:

Contact\_Information:

**Elvie Ebanks**  
**SFWMD**  
District

Contact\_Person\_Primary:  
Contact\_Person: Elvie Ebanks  
Contact\_Organization: South Florida Water Management

Contact\_Organization\_Primary:  
Contact\_Position: Project Manager  
Contact\_Address:

Address\_Type: mailing and physical address  
Address: 3301 Gun Club Road  
City: West Palm Beach  
State\_or\_Province: FL  
Postal\_Code: 33406

M1081.gen

Country: USA

Contact\_Voice\_Telephone: (561) 753-2400 x4717

Contact\_Facsimile\_Telephone: (561) 791-4093

Security\_Information:

Cross\_Reference:

Citation\_Information:

Series\_Information:

Publication\_Information:

Data\_Quality\_Information:

Attribute\_Accuracy:

Attribute\_Accuracy\_Report:

## Equipment Used

This Survey was prepared using GPS and Leveling instruments. The horizontal location of the well was established using GPS.

The vertical data was collected using Level Wild NA-2. Coordinates are based on the Florida State Plane Coordinate System, East Zone, NAD 83/90. Elevations based on NAVD88

Logical\_Consistency\_Report:

Horizontal data was established using NGS control points AJ8247 (M522 2001 CERP) and AJ8248 (N522 2001 CERP).

Vertical data was established using NGS benchmarks AJ8248 (N522 2001 CERP) and AJ8247 (M522 2001 CERP).

Coordinates are based on the Florida State Plane Coordinate System, East Zone, NAD 83/90.

Elevations are based on NAVD88.

Completeness\_Report:

Horizontal location taken at approximate center of well.

## Project Results

Lat. +27°02' 22.655"

Long. -080°22' 18.307"

N 984085.692

E 860667.242

New leveled elevations.

New site benchmark "M1081" is a standard S.F.W.M.D.

brass disc set in a standard concrete monument on the North side of Kanner Highway, adjacent to the well (which is on the South side).

Disc Elevation is 25.15' (NAVD88)

Top of Pipe (well M1081) Elevation is 27.83' (NAVD88)

based on NGS NAVD88 adjustment of vertical network.

Origin of NAVD88 elevation for BM "M1081" and well

"M1081" is closed bench level circuit through NGS benchmarks AJ8248 (N522 2001 CERP) and AJ8247 (M522 2001 CERP)

Well is situated on the South side of State Road 76

(Kanner Highway), East of State Road 710 (Beeline Highway),

West of Bridge Road (S.R. 708), in Section 31, Township

39 South, Range 40 East, Martin County, Florida

TO REACH the well from the intersection of State Road 76

(Kanner Highway) and State Road 710 (Beeline Highway) in

Indiantown, travel Northeast on State Road 76 (Kanner Highway)

for 5.25 (more or less) to a residence #8625 on the left

(Northwest) side of the road and the well on the right

(Southeast). Well is situated 40.7 feet (more or less) South of

the South edge of pavement for State Road 76, 120.4 feet

(more or less) South of a SFWMD disc stamped "M1081 2005"

(said disc situated between 2 pine trees on the North side

of State Road 76), East of the extended centerline of a

dirt drive leading to residence #8625 on the North. Well

is a metal pipe protruding 2 feet (more or less) above the ground.

Positional\_Accuracy:

Horizontal\_Positional\_Accuracy:

Horizontal\_Positional\_Accuracy\_Report:

The horizontal position of the well "M1081" was

established using differential GPS. NGS points

AJ8247 (M522 2001 CERP) and AJ8248 (N522 2001

CERP) were used as a source of horizontal control.

Quantitative\_Horizontal\_Positional\_Accuracy\_Assessment:

Horizontal\_Positional\_Accuracy\_Value: 1 meter

M1081.gen

Horizontal\_Positional\_Accuracy\_Explanation: The intended horizontal positional accuracy for this survey is 1 meter

Vertical\_Positional\_Accuracy:

## Level Line

Vertical\_Positional\_Accuracy\_Report:

A level line was run originating on NGS control point AJ8248 (N522 2001 CERP) with NAVD-88 elevation, running through well "M1081" and disc "M1081" and terminated on point AJ8247 (M522 2001 CERP) in accordance with Florida Minimum Technical Standards.

Quantitative\_Vertical\_Positional\_Accuracy\_Assessment:

Vertical\_Positional\_Accuracy\_Value: 0.02 feet

Vertical\_Positional\_Accuracy\_Explanation: A bench level circuit was performed between AJ8248 (N522 2001 CERP) and AJ8247 (M522 2001 CERP) running through well "M1081" in accordance with Florida Minimum Technical Standards (Chapter 61g17-6, FAC). Length of benchmark run is 1.295 miles. Allowable error is 0.06 feet. Achieved Accuracy is 0.035 feet.

Lineage:

Source\_Information:

Source\_Citation:

Citation\_Information:

Series\_Information:

Publication\_Information:

Larger\_Work\_Citation:

Citation\_Information:

Series\_Information:

Publication\_Information:

Source\_Time\_Period\_of\_Content:

Time\_Period\_Information:

Single\_Date/Time:

Range\_of\_Dates/Times:

Multiple\_Dates/Times:

Process\_Step:

Process\_Description:

The horizontal work was performed using Ashtech GPS receivers. The vertical work was performed using level

WILD

N-A2

Process\_Date: 20050823

Process\_Time: 09000000

Process\_Contact:

Contact\_Information:

Contact\_Person\_Primary:

Contact\_Organization\_Primary:

Contact\_Address:

Spatial\_Data\_Organization\_Information:

Spatial\_Reference\_Information:

Horizontal\_Coordinate\_System\_Definition:

Geographic:

Planar:

Map\_Projection:

Albers\_Conical\_Equal\_Area:

Azimuthal\_Equidistant:

Equidistant\_Conic:

Equiangular:

General\_Vertical\_Near-sidereal\_Perspective:

Gnomonic:

Lambert\_Azimuthal\_Equal\_Area:

Lambert\_Conformal\_Conic:

Mercator:

Modified\_Stereographic\_for\_Alaska:

Miller\_Cylindrical:

Oblique\_Mercator:

Oblique\_Line\_Point:

Orthographic:

Polar\_Stereographic:

Polyconic:

Robinson:

Sinusoidal:

van\_der\_Grinten:

Space\_Oblique\_Mercator\_(Landsat):

M1081.gen  
 Stereographic:  
 Transverse\_Mercator:  
 van\_der\_Grinten:  
 Grid\_Coordinate\_System:  
 Universal\_Transverse\_Mercator:  
 Transverse\_Mercator:  
 Universal\_Polar\_Stereographic:  
 Polar\_Stereographic:  
 StatePlane\_Coordinate\_System:  
 Lambert\_Conformal\_Conic:  
 Transverse\_Mercator:  
 Oblique\_Mercator:  
 Oblique\_Linear\_Points:  
 Polyconic:  
 ARC\_Coordinate\_System:  
 Equi\_rectangular:  
 Azimuthal\_Equidistant:  
 Local\_Planar:  
 Planar\_Coordinate\_Information:  
 Coordinate\_Representation:  
 Distance\_and\_Bearing\_Representation:  
 Local :  
 Geodetic\_Model :  
 Vertical\_Coordinate\_System\_Definition:  
 Altitude\_System\_Definition:  
 Depth\_System\_Definition:  
 Entity\_and\_Attribute\_Information:  
 Detailed\_Description:  
 Entity\_Type:  
 Attribute:  
 Attribute\_Domain\_Values:  
 Attribute\_Value\_Accuracy\_Information:  
 Overview\_Description:  
 Distribution\_Information:  
 Distributor:  
 Contact\_Information:  
 Contact\_Person\_Primary:  
 Contact\_Organization\_Primary:  
 Contact\_Address:  
 Standard\_Order\_Process:  
 Digital\_Form:  
 Digital\_Transfer\_Information:  
 Digital\_Transfer\_Option:  
 Online\_Option:  
 Computer\_Contact\_Information:  
 Network\_Address:  
 Dialup\_Instructions:  
 Offline\_Option:  
 Recording\_Capacity:  
 Available\_Time\_Period:  
 Time\_Period\_Information:  
 Single\_Date/Time:  
 Range\_of\_Dates/Times:  
 Multiple\_Dates/Times:  
 Metadata\_Reference\_Information:  
 Metadata\_Date: 20050823  
 Metadata\_Contact:  
 Contact\_Information:  
 Contact\_Person\_Primary:  
 Contact\_Person: Mike J. Bartholomew  
 Contact\_Organization: Biscayne Engineering Company, Inc.  
 Contact\_Organization\_Primary:  
 Contact\_Position: Project Surveyor  
 Contact\_Address:  
 Address\_Type: mailing and physical address  
 Address: 529 W. Flagler Street  
 City: Miami  
 State\_or\_Province: FL  
 Postal\_Code: 33130  
 Country: USA

M1081.gen

Contact\_Voice\_Telephone: (305) 324-7671

Contact\_Facsimile\_Telephone: (305) 324-0809

Contact\_Electronic\_Mail\_Address: mikel@biscayneengineering.com

Hours\_of\_Service: 8:00 AM to 5:00 PM EST

Metadata\_Standard\_Name: FGDC Content Standards for Digital Geospatial Metadata

Metadata\_Standard\_Version: 1.0

Metadata\_Time\_Convention: Local time

Metadata\_Security\_Information:

# M-1081



**Biscayne Engineering Company, Inc.**  
**Date of Photo: 04-25-05**  
**View: Looking Southeast across SR 76 (Well M-1081 near truck)**

# M-1081



**Biscayne Engineering Company, Inc.**  
**Date of Photo: 09-12-05**  
**View: Looking South at well M-1081**

# M-1081



**Biscayne Engineering Company, Inc.**  
**Date of Photo: 09-12-05**  
**View: Well M-1081 (with cap on)**



# M-1081



**Biscayne Engineering Company, Inc.**  
**Date of Photo: 09-12-05**  
**View: Looking Northeast-benchmark "M1081 2005" between 2 pine trees in background**

# M-1081



**Benchmark "M1081 2005"**

Elev. = 25.15' (NAVD-88)

**Biscayne Engineering Company, Inc.  
Date of Photo: 09-12-05  
View: Benchmark "M1081 2005"**

A. REDERO  
T. LOPEZ  
N. CEPEDA

#03-77478  
S.F.W.M.D  
"SITE-A"

8/3/05

( ESTABLISH  
ELEV. ON WELL  
M1039 )

STA	BS	MEAN	HI	FS	MEAN
BM	9.370 7.410 5.450	7.410	22.440 ✓		
TP#1				1.330 0.720 0.110	0.720
SHAKE	8.170 6.690 5.210	6.690	28.410 ✓		
TP#2				10.790 9.350 7.710	9.350
SHAKE	3.810 2.260 0.710	2.260	21.320 ✓		
TP#3				8.920 7.400 5.850	7.400

ELEV	BM ELEV	DESC.
	15.03	NGS # AD 6243 FND DISC STAMPED MAR 10 FLDNR. 78.2' FT W. OF US 1 S.E. LANE 450' FT N. OF COUNTY LINE NAVD 88
21.720 ✓		SET CUT NL
		SET CUT NL
19.060 ✓		SET CUT NL
		SET CUT NL
13.920 ✓		SET CUT NL

SAME  
CREW

#03-77478  
S.F.W.M.D  
"SITE-A"

8/3/05

(ELEV. CONT.)

STA	BS	MEAN	HI	FS	MEAN	ELEV.	BM ELEV	DESC
SHAKE	5.540 4.685 3.830	4.685	18.605 ✓					SET CUT NL
TP#4				1.960 1.215 0.470	1.215	17.39 ✓		SET 80 D SPIKE
SHAKE	7.270 6.540 5.810	6.540	23.93 ✓					SET 80 D SPIKE
TP#5				5.500 4.060 2.620	4.060	19.87 ✓		SET 80 D SPIKE
SHAKE	5.585 4.640 3.695	4.64	24.51 ✓					SET 80 D SPIKE
TP#6				3.750 2.755 1.760	2.755	21.755 ✓		SET MAG NL IN TREE STUMP

SAME  
CREW

#03-77476  
S.F.W.M.D.  
"SITE-A"

3/3/05

(ELEV. CONT.)

STA	BS	MEAN	HI	FS	MEAN	ELEV	BM ELEV.	DESC.
SHAKE	3.470 2.980 2.490	2.980	24.735					SET MAG NL IN TREE TRUNK
M1039				2.770 2.050 2.220	2.086	22.685		TOP OF PIPE WELL = M1039
SHAKE	2.350 1.630 0.910	1.630	24.315					TOP OF PIPE WELL = M1039
TP # 7				3.070 2.555 2.365	2.555	21.760		MAG NL IN TREE TRUNK
SHAKE	3.640 2.650 1.660	2.650	24.410					MAG NL IN TREE TRUNK
TP # 8				3.480 2.530 2.590	2.230	19.880		SET 80 D SPIKE

SAME  
CREW

#03-77478  
S. F. W. M. D

8/3/05

"SITE - A"

(ELEV. CONT)

STA	BS	MEAN	HI	FS	MEAN	ELEV	BM ELEV	DESC
SHAKE	5.510 4.070 2.630	4.070	33.750	✓				SET 80 D SPIKE
TP# 9				7.280 6.550 5.820	6.550	17.400	✓	SET 80 D SPIKE
SHAKE	2.340 1.650 0.960	1.650	19.050	✓				SET 80 D SPIKE
TP# 10				6.010 5.120 4.730	5.120	13.930	✓	SET CUT NL
SHAKE	7.130 5.710 4.290	5.710	19.640	✓				SET CUT NL
TP # 11				6.060 6.420 4.780	6.420	13.220	✓	SET CUT NL

2548/03

SAME  
CREW

#03-77478  
S.F.W.M.D.

2548 / 04

8/3/05

"SITE-A"

(ELEV. CONT)

STA	BS	MEAN	HI	FS	MEAN	ELEV	BM ELEV	DESC
SHAKE	5.950 4.495 3.040	4.495	17.715					SET CUT NL
TP#12				6.000 4.780 3.560	4.780	12.935		SET CUT NL
SHAKE	7.160 5.920 4.680	5.920	18.855					SET CUT NL
TP#13				11.750 10.050 8.350	10.050	8.805		SET CUT NL
SHAKE	6.590 5.290 3.990	5.290	14.095					SET CUT NL
TP#14				7.790 5.845 3.900	5.845	8.250		SET CUT NL

SAME  
CREIN

#03-77478  
S.F.W.M.D

8/3/05

"SITE-A"

(ELEV. CONT)

STA	BS	MEAN	HI	FS	MEAN	ELEV	EM ELEV	DESC
SHAKE	6.870 5.360 3.850	5.360	13.610	✓				SET CUT NL
TP#15				5.380 3.430 1.480	3.430	10.180	✓	SET CUT NL
SHAKE	4.330 2.820 1.310	2.820	13.000	✓				SET CUT NL
TP#16				7.460 5.660 3.860	5.660	7.340	✓	SET CUT NL
SHAKE	6.290 4.790 3.290	4.790	12.130	✓				SET CUT NL
TP#17				5.150 3.305 1.460	3.305	8.825	✓	SET CUT NL



SAME  
CREW

#03-77478  
S.F.V.M.D.

"SITE-A"

8/3/05

(ELEV. CONT.)

STA	BS	MEAN	HI	FS	MEAN	ELEV	BM ELEV	DESC
SHAKE	9.600 8.100 6.600	8.100	16.925	✓				SET CUT NL
TP # 18				12.750 10.560 8.370	10.560	6.365	✓	SET CUT NL
SHAKE	7.550 5.310 3.070	5.310	11.675	✓				SET CUT NL
TP # 19				7.750 5.825 3.900	5.825	5.850	✓	SET CUT NL
SHAKE	7.870 6.355 4.840	6.355	12.205	✓				SET CUT NL
TP # 20				5.870 3.870 1.850	3.870	8.335	✓	SET CUT NL

SAME  
CREW

# 03-77478  
S.F.W.M.D

8/3/05

"SITE-A"

(ELEV CONT)

STA	BS	MEAN	HI	FS	MEAN
SHAKE	7.320 6.385 5.450	6.385	17.720 ✓		

BM				6.040 5.460 4.880	5.460
----	--	--	--	-------------------------	-------

BM	3.605 3.425 3.245	3.425	26.110 ✓		
----	-------------------------	-------	----------	--	--

DISC M1039				3.970 3.740 3.560	3.74
---------------	--	--	--	-------------------------	------

SHAKE	3.320 3.140 2.960	3.140	25.510 ✓		
-------	-------------------------	-------	----------	--	--

BM				3.865 3.755 3.645	3.755
----	--	--	--	-------------------------	-------

2548/07

ELEV	BM ELEV	DESC
------	------------	------

SET CUT NL

↓  
NGS # A55245  
FND DISC STAMPED  
GCY DOZ 200,  
29.6' W OF W. EDGE OF PAV.  
COUNTY LINE RD. NEAR HEAD W.  
NAVD 88

22.685 WELL = M1039

22.310 ↓		SET S.F.W.M.D DISC STAMPED M1039 2005
----------	--	------------------------------------------

21.755	21.755	TP #6	MAG NL IN STUMP
NO ERROR			

SAME  
CREW

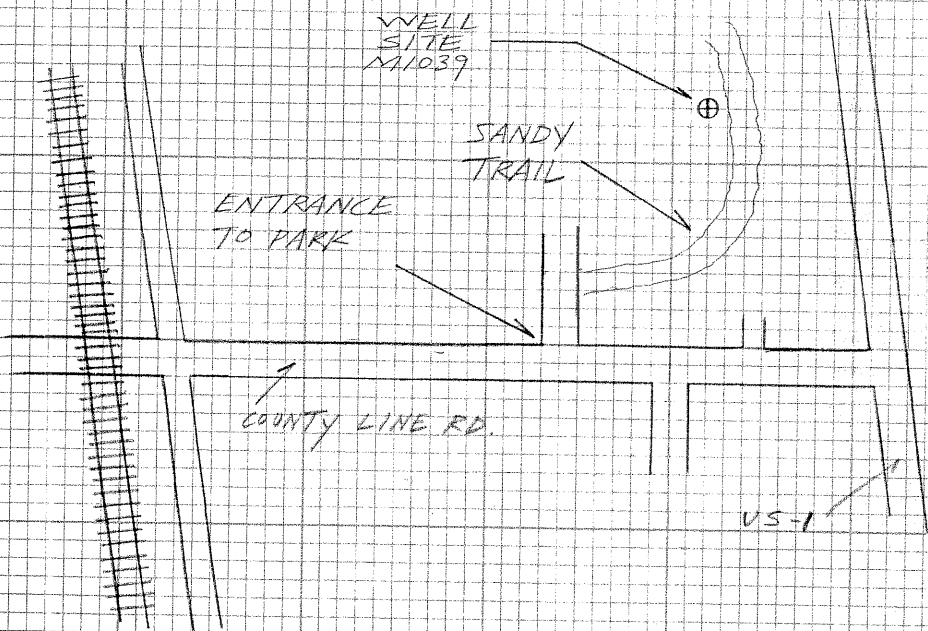
#03-77478  
S.F.W.M.D.

(SITE - A  
DESCRIPTION)

8/3/05

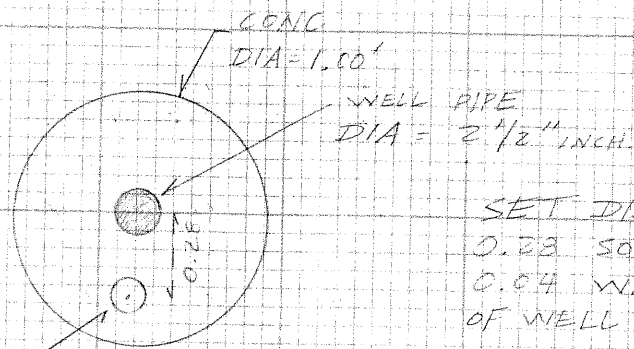
DIRECTIONS -

FROM THE INTERSECTION OF  
US-1 AND COUNTY LINE RD.  
TRAVEL WEST ON COUNTY  
LINE RD FOR 0.2 MILES  
TO THE ENTRANCE OF TERQUESTA  
PARK. TURN NORTH INTO  
PARK AND THEN EAST ONTO A  
SANDY TRAIL THAT CIRCLES  
AROUND FOR 0.2 MILES. THE  
WELL IS ON THE LEFT SIDE  
OF THE TRAIL.



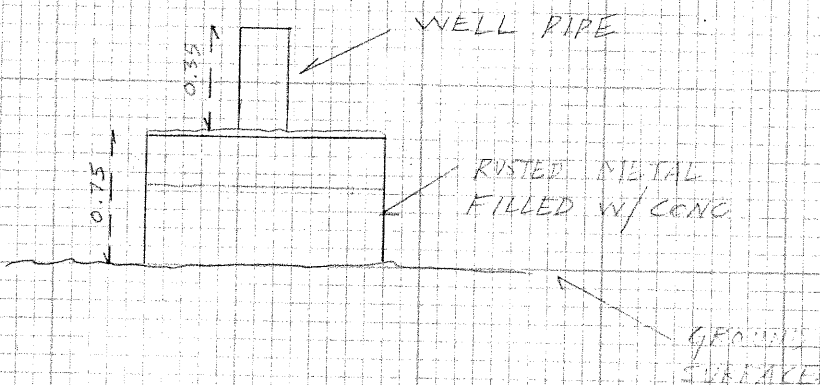
2548/08  
SKETCH OF WELL SITE = M11039

TOP VIEW



SET DISC  
0.28 SOUTH  
0.04 WEST  
OF WELL PIPE

SIDE VIEW



SAME  
CREN

#03-77478  
S.F.W.M.D.

"SITE - B"

3/3/05

(ESTABLISH  
ELEV ON WELL  
M1233)

STA	BS	MEAN HI	FS	MEAN
BM	4.675 4.530 4.385	4.530	12.250	✓
M1233			4.975 4.970 4.895	4.910
SHAKE	5.385 5.325 5.265	5.325	12.665	✓
BM			5.095 4.995 4.795	4.945

2548/09

ELEV	BM ELEV	DESC
7.720		NGS # AJ 5644 END DISC STAMPED B SIG 2001 52.50' N. OF PROJ. & OF SE COUNTY WINE RD AND 4' W. OF PROJ. W. EDGE OF MAX. OF SE WOODEN BRIDGE LN.
7.340		TOP OF PIPE NAVD88 WELL = M1233
		TOP OF PIPE WELL = M1233
7.720	7.720	NGS # AJ 5644 END BRASS D. NAV88

SAME  
CREW

#03-77473  
S.F.W.M.D.

"SITE-B"

8/3/05

ESTABLISH  
ELEV. ON WELL  
M1230

STA	BS	MEAN	HI	FS	MEAN
BM	4.790 4.640 4.490	4.640	12.360		
M1230				5.010 4.925 4.640	4.925
SHAKE	5.300 5.215 5.130	5.215	12.650		
BM				5.080 4.930 4.780	4.930

2543/10

ELEV	BM ELEV	DESC
7.720	7.720	NGS # AJ5644 FND DISC. STAMPED 3 516 2001 52.50' N. OF PROJ. C. OF SE COUNTY LINE RD. 4' W. OF PROJ. W. EDGE OF PAV. SE. WOOLEN BRIDGE LN TOP OF PIPE WELL = M1230 NAVD 88
7.435		
		TOP OF PIPE WELL = M1230
7.720	7.720	NGS # AJ 5644 FND BRASS D. NAVD 88

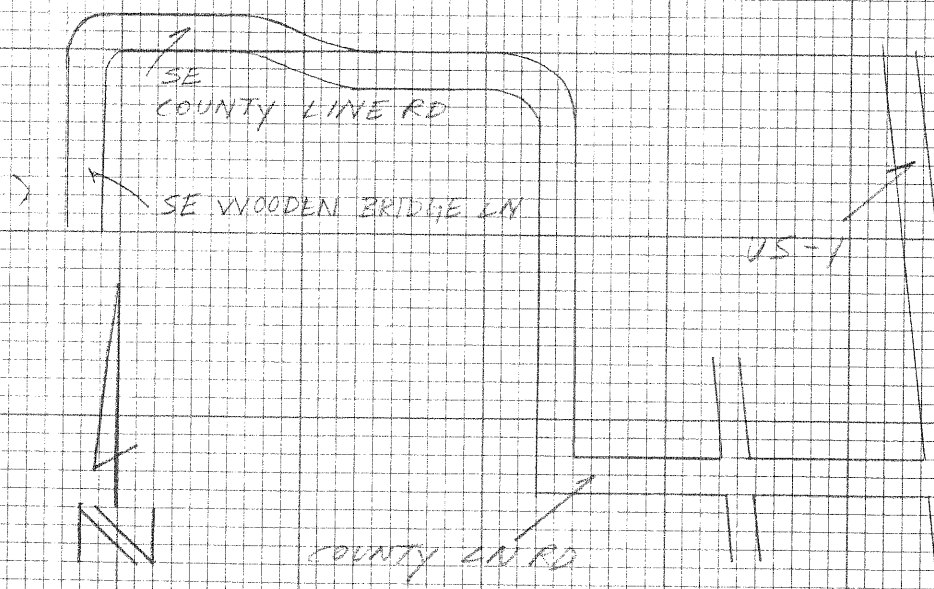
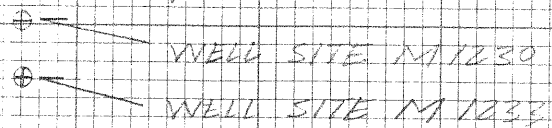
SAME  
CREW

#03-478  
S.F.W.M.D.

SITE - B  
DESCRIPTION

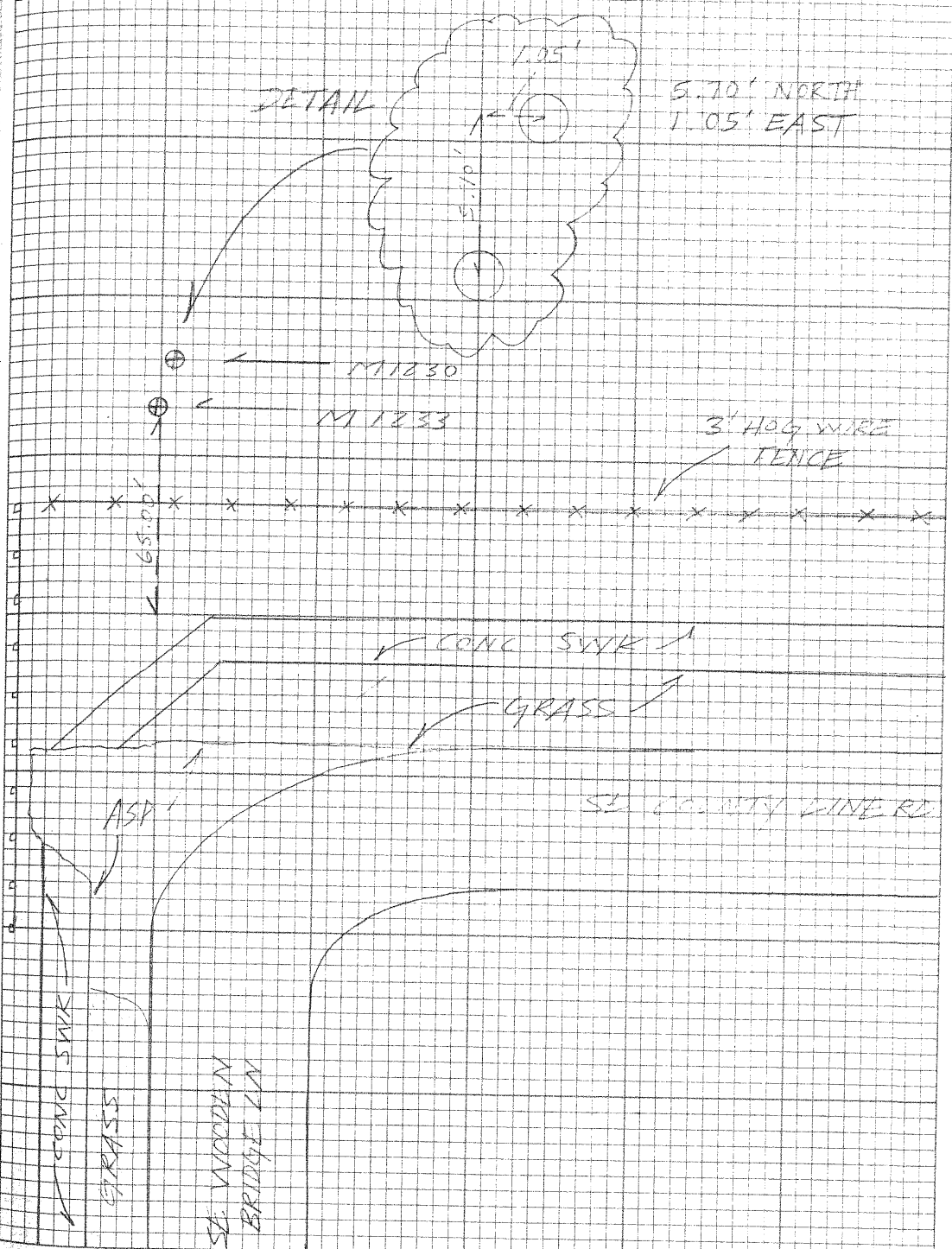
8/3/05

DIRECTIONS - FROM THE INTERSECTION OF US  
AND COUNTY LN RD. TRAVEL WEST  
ON COUNTY LN RD. FOR 1.3 MILE  
CONTINUE NORTH FOR 0.9 MILE  
AND CONTINUE WEST AGAIN FOR  
0.7 MILES ON SE. COUNTY LN RD WHERE  
IT TURNS SOUTH AND BECOMES  
SE WOODEN BRIDGE LN PARK ON SIDE  
OF RD. AND WALK NORTH INTO WOODS  
THE WELLS ARE 96' NORTH OF  
PROJECTED  $\phi$  OF SE COUNTY LN RD  
AND ARE ON LINE WITH THE WEST  
EDGE OF PAY. OF SE WOOD BRIDGE LN.



2548/11

DETAIL



A. REPERO  
T. LOPEZ  
N. CEPEDA

#03-17478  
S.F.W.M.D  
"SITE - C"

8/4/05

( ESTABLISH  
ELEV. ON WELLS  
M1229, M1232 )

STA	BS	MEAN	HI	FS	MEAN	ELEV	BM ELEV	DESC
BM	5.860 5.050 4.240	5.050	14.310	✓			9.260	NGS # AJ 5647 FND DISC STAMPED E. 516 2001 AT THE INTERSECTION OF PINE TREE ST AT MARTIN COUNTY & WEST PALM LINE. 13 FT NORTH OF WOOD POWER POLE SET CUT NL NAVD 88
TP#1				6.920 5.245 3.570	5.245	9.065	✓	SET CUT NL
SHAKE	6.245 4.755 3.265	4.755	13.820	✓				SET CUT NL
TP#2				5.650 3.860 2.070	3.860	9.960	✓	SET CUT NL
SHAKE	7.000 5.270 3.540	5.270	15.230	✓				SET CUT NL
TP#3				8.720 7.010 5.300	7.010	8.220	✓	SET CUT NL

SAME  
CREW

#03-77978  
S.F.W.M.D.  
" SITE - C "

8/4/05

(ELEV CONT)

STA	ES	MEAN	HI	FS	MEAN	ELEV	BM ELEV	DESC
SHAKE	7.020 5.705 4.390	5.705	13.975	✓				SET CUT NL
TP# 4				6.565 5.065 3.565	5.065	8.860 ✓		SET CUT NL
SHAKE	6.900 4.930 2.960	4.930	13.770	✓				SET CUT NL
TP# 5				7.100 5.395 3.690	5.395	8.395 ✓		SET CUT NL
SHAKE	7.000 5.250 3.500	5.250	13.645	✓				SET CUT NL
TP# 6				5.705 5.705 1.705	3.705	9.940 ✓		SET CUT NL



SAME  
CREW

#03-77478  
S.F.W.M.D.

2548 / 14

8/4/05

"SITE-C"

(ELEV. CONT.)

STA	BS	MEAN	HI	FS	MEAN	ELEV	BM ELEV	DESC
SHAKE	6.610 4.555 2.500	4.555	14.495	✓				SET CUT NL
TP # 7				7.770 5.535 3.280	5.525	8.970	✓	SET CUT NL
SHAKE	7.280 5.175 3.070	5.175	14.145	✓				SET CUT NL
TP # 8				11.880 7.550 7.120	7.550	4.595	✓	SET CUT NL
SHAKE	7.1500 5.195 3.240	5.195	9.790	✓				SET CUT NL
TP # 9				3.980 2.180 0.380	2.180	7.610	✓	SET CUT NL

SAME  
CREW

#03 - 77478  
S.F.V.V.M.D

8/4/05

"SITE-C"

(ELEV. CONT)

STA	BS	MEAN	HI	FS	MEAN	ELEV	ZM ELEV	DESC
SHAKE	7.570 6.490 5.410	6.49	14.100					SET CUT NL
TP#10				6.490 5.150 3.870	5.180	8.920		SET CUT NL
SHAKE	5.740 4.705 3.670	4.705	13.625					SET CUT NL
TP #11				5.900 5.008 4.100	5.000	8.625		SET MAG NL & W
SHAKE	4.750 4.300 3.850	4.300	12.925					SET MAG NL & W
M 1232				5.190 4.740 4.290	4.740	8.185		TOP OF PIPE WELL = M1232

SAME  
OPEN #03-77478  
S.F.W.M.I.

"SITE-C"

8/4/05

(ELEV. CONT)

STA	BS	MEAN	HI	FS	MEAN	ELEV	BM ELEV	DESC
SHAKE	5.380 4.930 4.490	4.930	13.115 ✓					TOP OF PIPE WELL 1232
TR #11				5.270 4.350 4.430	4.850	8.265 ✓		TOP OF PIPE WELL 1229
SHAKE	4.890 4.450 4.020	4.450	12.715 ✓					TOP OF PIPE WELL 1229
TR #12				4.540 4.090 3.640	4.090	8.625 ✓		SET MAG NL & W
SHAKE	5.970 5.090 4.210	5.090	13.715 ✓					SET MAG NL & W
TR #13				5.850 4.800 3.750	4.800	8.915 ✓		SET CUT NL

SAME  
CREW

#03-77478  
S.F.W.M.D.  
"SITE - C"

8/4/05

(ELEV. CONT.)

STA	ZS	MEAN	HL	FS	MEAN	ELEV	BM ELEV	DESC
SHAKE	6.640 5.335 4.030	5.335	14.250					SET CUT NL
TP#14				7.730 6.645 5.560	6.645	7.605		SET CUT NL
SHAKE	4.150 2.475 0.800	2.475	10.080					SET CUT NL
TP#15				7.570 5.490 3.410	5.490	4.590		SET CUT NL
SHAKE	11.450 9.175 6.940	9.175	13.785					SET CUT NL
TP#16				7.500 4.820 2.670	4.820	8.965		SET CUT NL

SAME  
CREW

#03-77478  
S.F.V.M.D  
"SITE-C"

8/4/05

(ELEV. CONT)

STA	BS	MEAN	HI	FS	MEAN	ELEV	BM ELEV	DESC
SHAKE	7.520 5.575 3.330	5.575	14.540					SET CUT NL
TP# 17				6.655 4.605 3.535	4.605	9.935 ✓		SET CUT NL
SHAKE	6.010 3.790 1.570	3.790	13.725 ✓					SET CUT NL
TP# 18				6.900 5.330 3.760	5.330	8.375 ✓		SET CUT NL
SHAKE	7.370 5.460 3.550	5.460	13.855 ✓					SET CUT NL
TP# 19				6.760 5.000 3.240	5.000	8.855 ✓		SET CUT NL

SAME  
CREW

#03-77473  
S.F.V. M.L.  
"SITE-C"

2/9/05

(ELEV. CONT)

STA	BS	MEAN HI	FS	MEAN	ELEV	BM ELEV.	DESC
SHAKE	6.820 5.320 5.920	5.320	14.175				SET CUT NL
TP#20				7.280 5.960 4.640	5.960	8.215	SET CUT NL
SHAKE	7.780 6.340 4.900	6.340	14.555				SET CUT NL
TP#21				9.230 6.920 4.610	6.920	7.635	SET CUT NL
SHAKE	2.520 1.325 0.130	1.325	8.760				SET CUT NL
TP#22				7.290 5.475 3.700	5.475	3.465	SET CUT NL

2543/19

SAME  
CREW

#03-77478  
S.F.W.M.D.  
"SITE - C"

8/4/05

(ELEV. CONT.)

2548/20

STA	BS	MEAN	HI	FS	MEAN	ELEV	BM ELEV	DESC
SHAKE	6.890 5.270 3.650	5.270	8.735	✓				SET CUT NL
TP# 23				6.690 5.160 3.640	5.760	3.575	✓	SET CUT NL
SHAKE	15.580 13.916 12.24	13.91	17.485	✓				SET CUT NL
TP# 24				10.200 7.700 5.200	7.700	9.785	✓	SET CUT NL
SHAKE	2.680 1.680 0.740	1.680	11.465	✓				SET CUT NL
TP# 25				5.840 4.490 3.140	4.490	6.975	✓	SET CUT NL

SAME  
CREW

#03-77478  
S.F.W.M.D

2548/21

8/4/05

"SITE - C"

(ELEV. CONT)

STA	BS	MEAN	HI	FS	MEAN	ELEV	BM ELEV	DESC
SHAKE	9.050 7.380 5.710	7.380	14.355					SET CUT NL
TP #26				7.380 6.190 5.000	6.190	8.165		SET CUT NL
SHAKE	5.910 5.690 5.570	5.690	13.855					SET CUT NL
BM				7.615 7.355 7.160	7.385	6.470	6.450	NGS # AJ 3646 END FLANGE - ENCASED STAINLESS STEEL PIPE STAMPING ID 516 7001 INTERSECTION OF COUNTRY CLUB DRIVE AND ISLAND WAY. 13.7 FT N.W. OF FIRE HYDRANT. NAYD 88

ERR = 0.0204



SAME  
CREW

#03-77473  
S.F.W.M.D.

2542/21

3/4/05

"SITE C"

STA	BS	MEAN HI	FS	MEAN	ELEV	BM ELEV	DESC
	5.160						
BM	4.920 4.680	4.720	13.185			8.265	WELL=M/237
DISC M/237				4.930 4.685 4.440	4.685	8.500	SET S.F.W.M.D. DISC STAMPED M/237
SHAKE	4.720 4.465 4.310	4.465	12.965				" "
BM				4.785 4.340 3.955	4.340	8.625	8.625 TRAIL M/237 W. NO ERROR

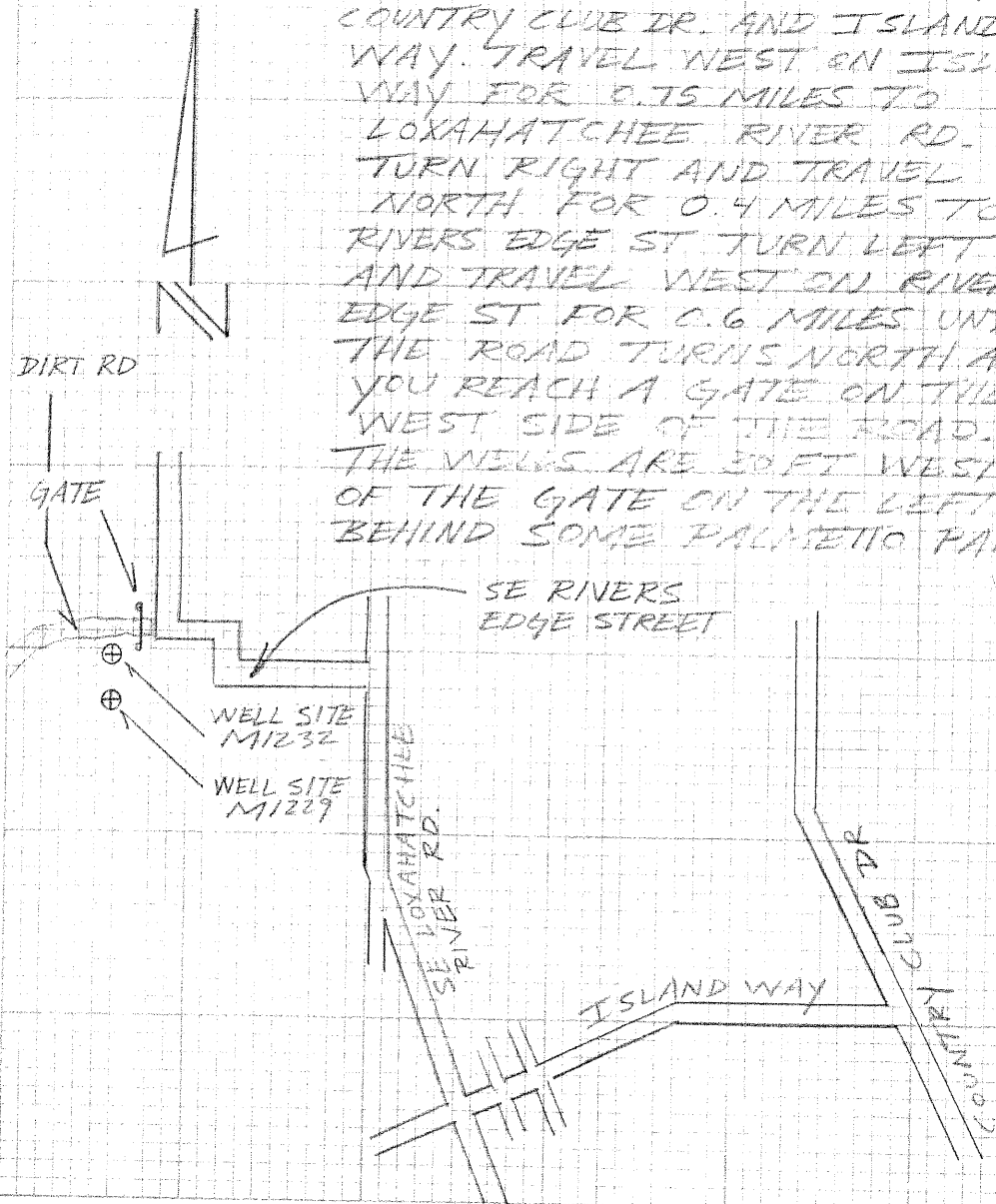
SAME  
CREW

#03-77478  
S.F.W.M.D

8/4/05

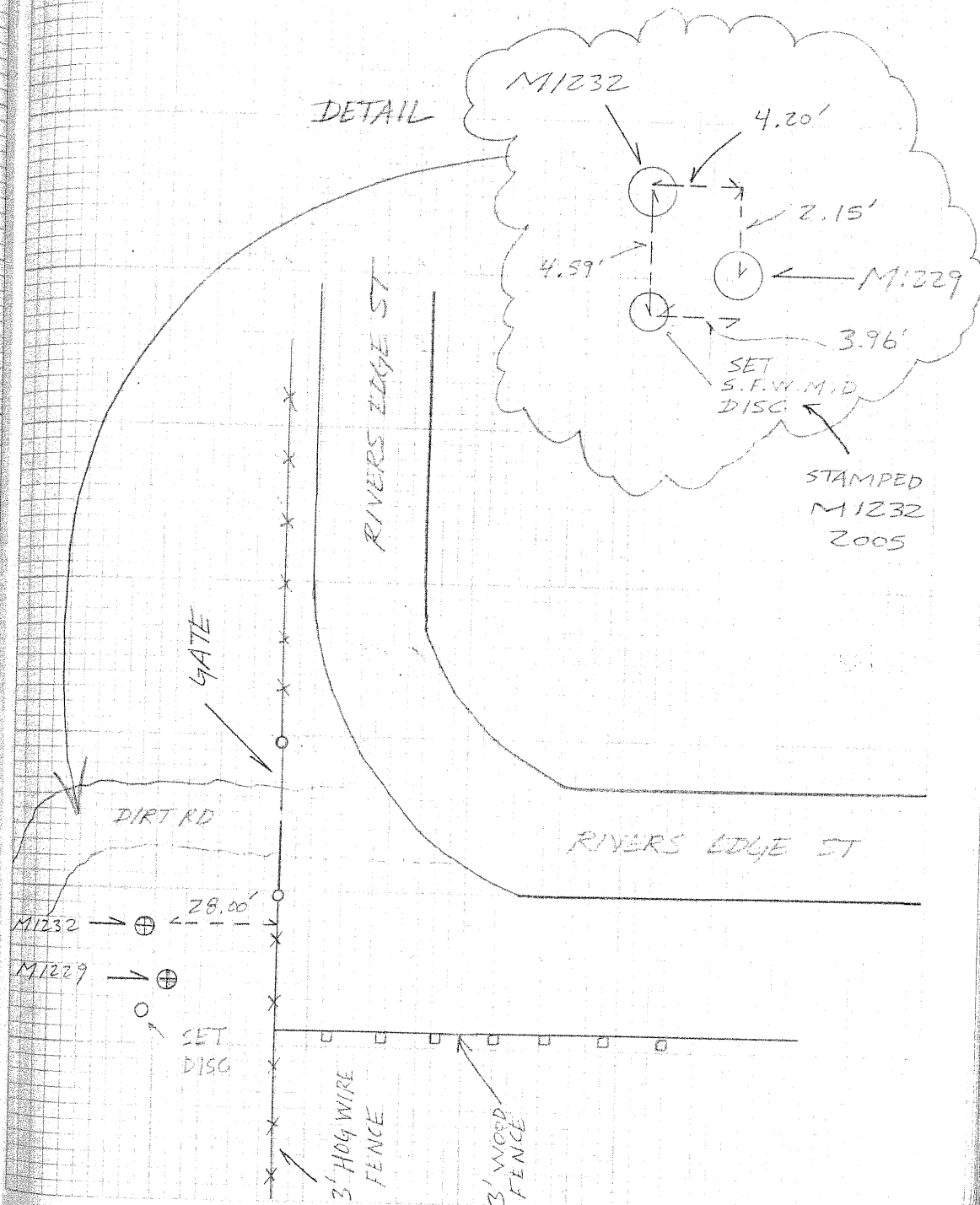
(SITE-C  
DESCRIPTION)

DIRECTIONS - FROM THE INTERSECTION OF  
COUNTRY CLUB DR. AND ISLAND  
WAY. TRAVEL WEST ON ISLAND  
WAY FOR 0.75 MILES TO  
LOXAHATCHEE RIVER RD.  
TURN RIGHT AND TRAVEL  
NORTH FOR 0.4 MILES TO  
RIVERS EDGE ST. TURN LEFT  
AND TRAVEL WEST ON RIVERS  
EDGE ST FOR 0.6 MILES UNTIL  
THE ROAD TURNS NORTH AND  
YOU REACH A GATE ON THE  
WEST SIDE OF THE ROAD.  
THE WELLS ARE 30 FT WEST  
OF THE GATE ON THE LEFT  
BEHIND SOME PALMETTO PALMS.



2548/23

DETAIL



A. PEDERO  
T. IOPTE  
N. CEDELA

#03-17478  
S. F. W. M. E.

"SITE-D9E"

3/9/05

(ESTABLISH  
ELEV. ON WELLS  
M1092; M1044, M1258)

STA	BS	MEAN	HI	FS	MEAN	ELEV	BM ELEV
BM	6.570 5.310 4.050	5.310	13.230				7.920
M1092				5.430 7.305 6.180	7.305	5.925	
SHAKE	7.380 6.720 3.610	6.730	12.655				
TP#1				5.090 3.740 2.370	3.740	8.915	
SHAKE	7.740 6.150 4.560	6.150	15.065				
TP#2				6.290 4.905 3.520	4.925	10.160	

BM  
ELEV  
DESC  
NGS# AF3053  
FND DISC STAMPED 0224 1965  
0.7 MILES SOUTHEAST FROM  
AIA AND SOUTHEAST BRIDGE RD.  
20.31' NORTHEAST OF POWER POLE.  
NAVD 83

TOP OF PIPE WELL = M1092

TOP OF PIPE WELL = M1092

SET CUT NL

SET CUT NL

SET CUT NL

SAME  
CREW

#03-77173  
S. F. V. M. D

3/8/05

" SITE - D/E "

(ELEV. CONT)

STA	ES	MEAN	MI	ES	MEAN	ELEV.	BM ELEV	DESC
SHAKE	5.540 4.680 3.920	4.680	14.340					SET CUT NL
M1044				6.480 5.740 5.000	5.740	9.100		TOP OF PIPE WELL = M1044
SHAKE	6.480 5.480 4.730	5.480	14.980					TOP OF PIPE WELL = M1044
M1258				6.150 5.720 4.930	5.720	8.850		TOP OF PIPE WELL = M1258
SHAKE	7.330 6.270 5.520	6.270	14.950					TOP OF PIPE WELL = M1258
TP#3				7.160 5.400 3.640	5.400	9.450		SET CUT NL

SAME  
CREW

#03-77478  
S.F.W.M.D

1548/26

5/8/05

"SITE DGE"

(ELEV. CONT)

STA	BS	MEAN	HI	FS	MEAN	ELEV	BM ELEV	DESC
SHAKE	6.750 5.730 5.710	5.730	14.68					SET CUT NL
TP#4				3.570 4.550 2.530	4.550	10.130		SET CUT NL
SHAKE	2.340 6.805 5.210	6.805	16.935					SET CUT NL
TP#5				4.260 2.495 0.730	2.495	14.440		SET CUT NL
SHAKE	7.010 7.470 5.730	7.470	21.910					SET CUT NL

EM

5.220  
3.910  
2.600

3.910

18.000  
18.000  
NO ERROR

NGS# AF7531  
FND FLANGE - ENCASED STAINLESS  
STEEL ROD  
STAMPING C403 1991  
147.6' NE OF AIA  
1.3' SE OF POWER POLE

SAME  
CREW

#03-77478  
S.F.W.M.D.

8/8/05

" SITE - E "

(ELEV. CONT.)

STA	ZS	MEAN	HI	FS	MEAN
	6.160				
BM	5.295	5.295	14.395		
	4.430				
				6.010	
				5.135	5.135
				4.260	
	6.300				
SHAKE	5.430	5.430	14.690		
	4.560				
				5.260	
				4.530	4.530
				3.800	
BM					

ELEV	BM ELEV.	DESC
	9.100	WELL = M1044
9.260		
10.160	10.160	TP # 2 CUT NL

WELL = M1044

SET S.F.W.M.D. DISC  
STAMPED M1044 2005

" " " "

10.160 10.160 TP # 2 CUT NL  
NO ERROR

2548/27

SAIIE  
CREW

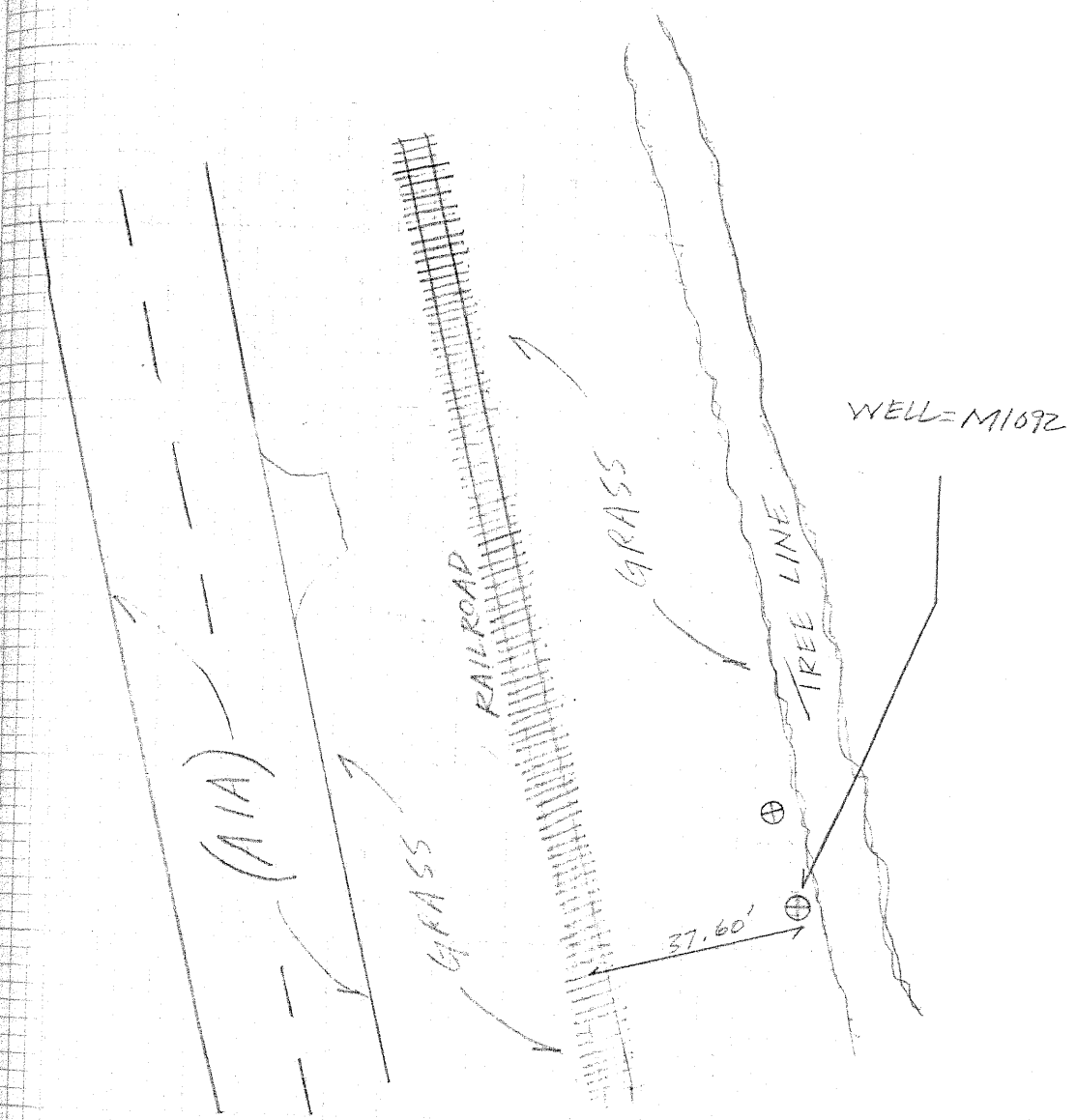
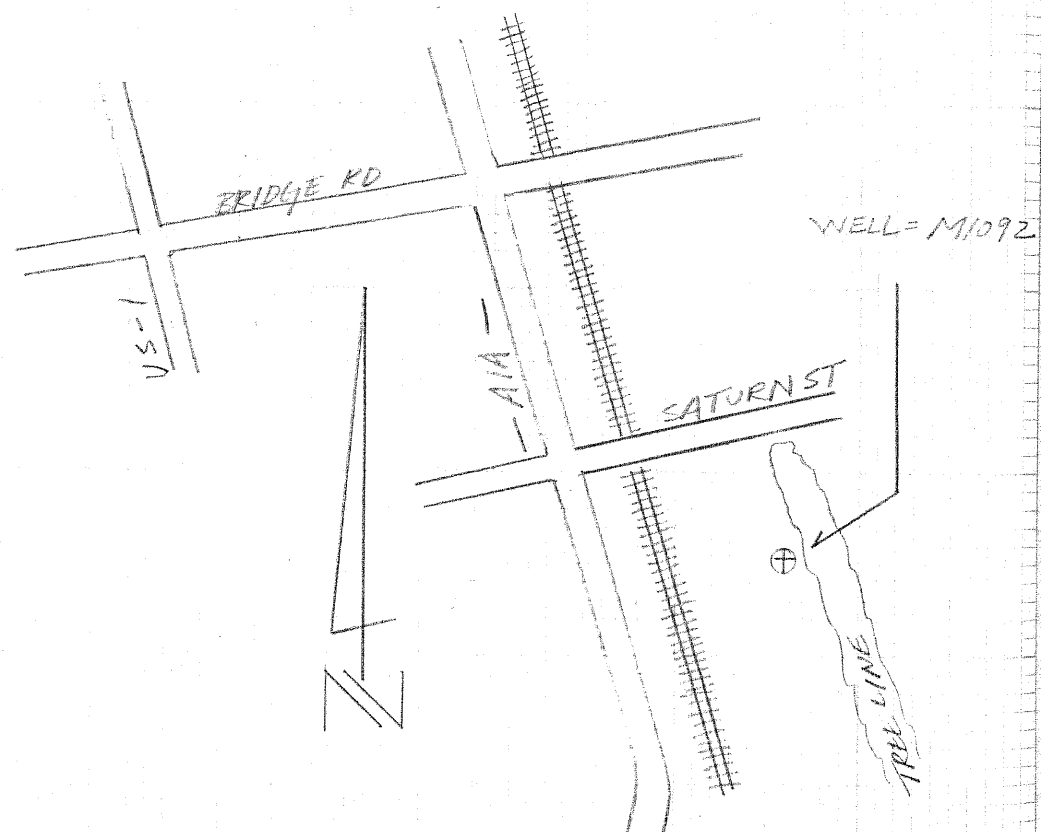
#03-77478  
S.F.W.M.D

2548/28

8/8/05

(SITE - D  
DESCRIPTION)

DIRECTIONS - FROM THE INTERSECTION OF  
BRIDGE RD. AND US-1 TRAVEL  
EAST ON BRIDGE RD. FOR 0.35  
MILES TO AIA. TURN SOUTH ON  
AIA AND TRAVEL FOR 0.7 MILES.  
PARK ON EAST SIDE OF ROAD.  
THE WELL IS 37.60 FT EAST  
OF CENTER OF RAILROAD TRACKS  
AT THE BASE OF TREE LINE  
BORDERING A TWO STORY BROWN  
HOUSE.



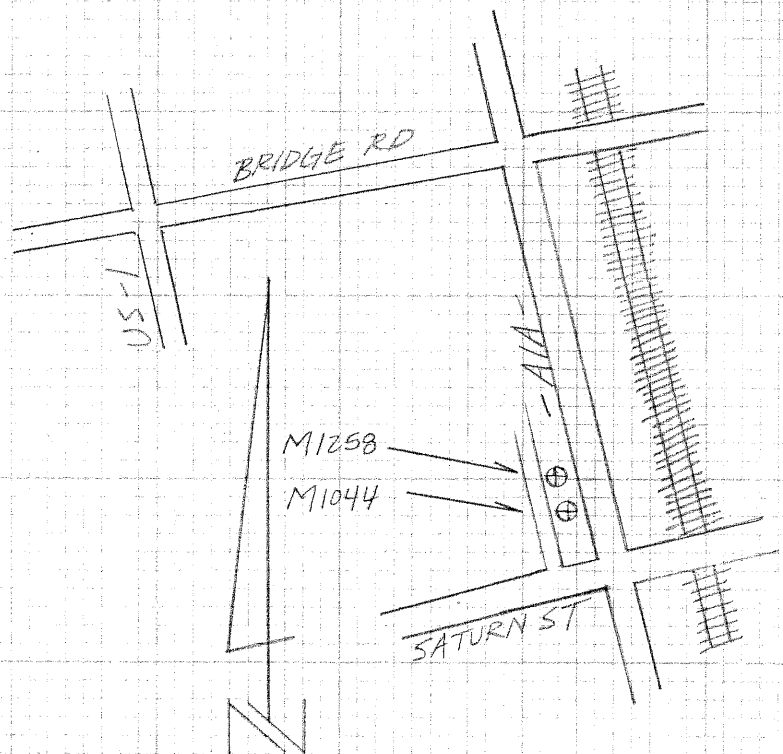
SAME  
CREW

#03-77478  
S.F.W.M.D.

8/8/05

SITE-E  
DESCRIPTION

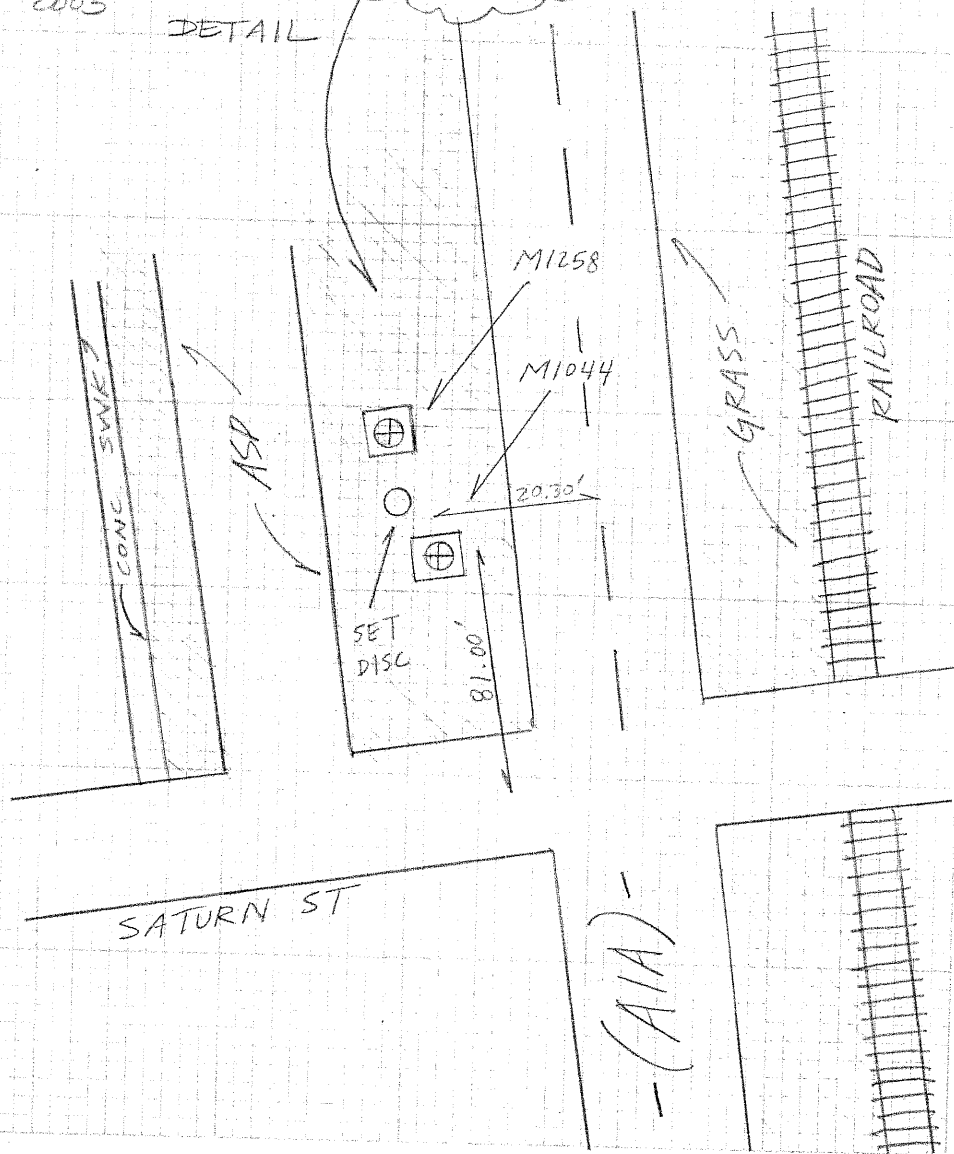
DIRECTIONS - FROM THE INTERSECTION OF  
BRIDGE RD AND US-1 TRAVEL  
EAST ON BRIDGE RD FOR 0.35  
MILES TO AIA. TURN SOUTH  
AND TRAVEL FOR 0.5 MILES  
TO SATURN ST. WELLS ARE  
JUST NORTH OF SATURN ST.  
ON THE WEST SIDE OF AIA.



2548/29

STAMPED  
M1044  
2005

DETAIL





SAME  
CREW

#03-77473  
S.F.W.M.D.  
"SITE-F"

8/8/05

(ESTABLISH  
ELEV. ON WELL  
M1057)

STA	BS	MEAN	HI	FS	MEAN	ELEV	BM ELEV
BM	8.080 5.555 5.030	6.555	11.365 ✓				4.810
TP#1				7.810 5.350 2.890	5.350	6.015 ✓	
SHAKE	9.840 8.225 6.660	8.250	14.265 ✓				
TP#2				3.770 1.930 0.190	1.930	12.285 ✓	
SHAKE	6.490 6.110 5.730	6.110	18.395 ✓				
M1057				4.325 3.990 3.655	3.990	14.405 ✓	

DESC  
N4 ~~S~~ 7555  
FIND DISC STAMPED 2414 H  
23' W. OF  $\phi$  OF GOMEZ AVE  
28' N. OF  $\phi$  OF PALM STREET  
IN NORTHWEST CORN. OF DRAINAGE  
BOX. NAVD 83

SET CUT NL  
  
SET CUT NL  
  
SET MAG NL  $\phi$  W  
  
SET MAG NL  $\phi$  W

TOP OF PIPE WELL = M1057

SAME  
CREW

#03-77478  
S.F.W.M.D.  
"SITE-F"

8/8/05

(ELEV. CONT)

STA	BS	MEAN	HI	FS	MEAN	ELEV	BM ELEV	DESC
SHAKE	7.500 7.570 6.180	7.570	21.995					TOP OF PIPE WELL = M1057
TP#3				2.940 1.745 0.550	1.745	20.250		SET CUT NL
SHAKE	6.790 6.420 6.050	6.420	26.670					SET CUT NL
BM				6.250 5.600 4.950	5.600	21.070	21.040	NGS # 6781 FND DISC STAMPED PINE 1929 N03 1980. 33.5' NW OF $\phi$ OF SE GROSSRIP ST. 89.6' SW OF AIA $\phi$ . 0.7' SE OF WITNESS POST. MAY 93



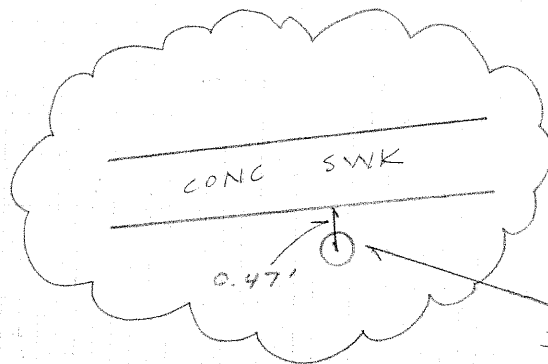
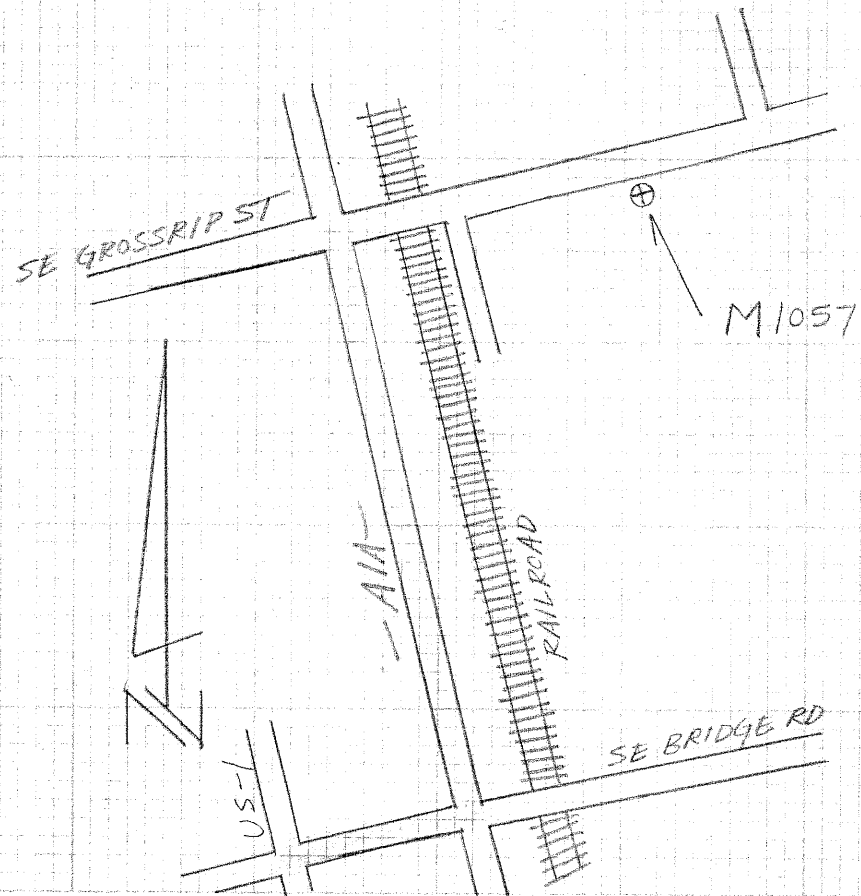
SAME  
CREW

#03-77478  
S.F.W.M.D.

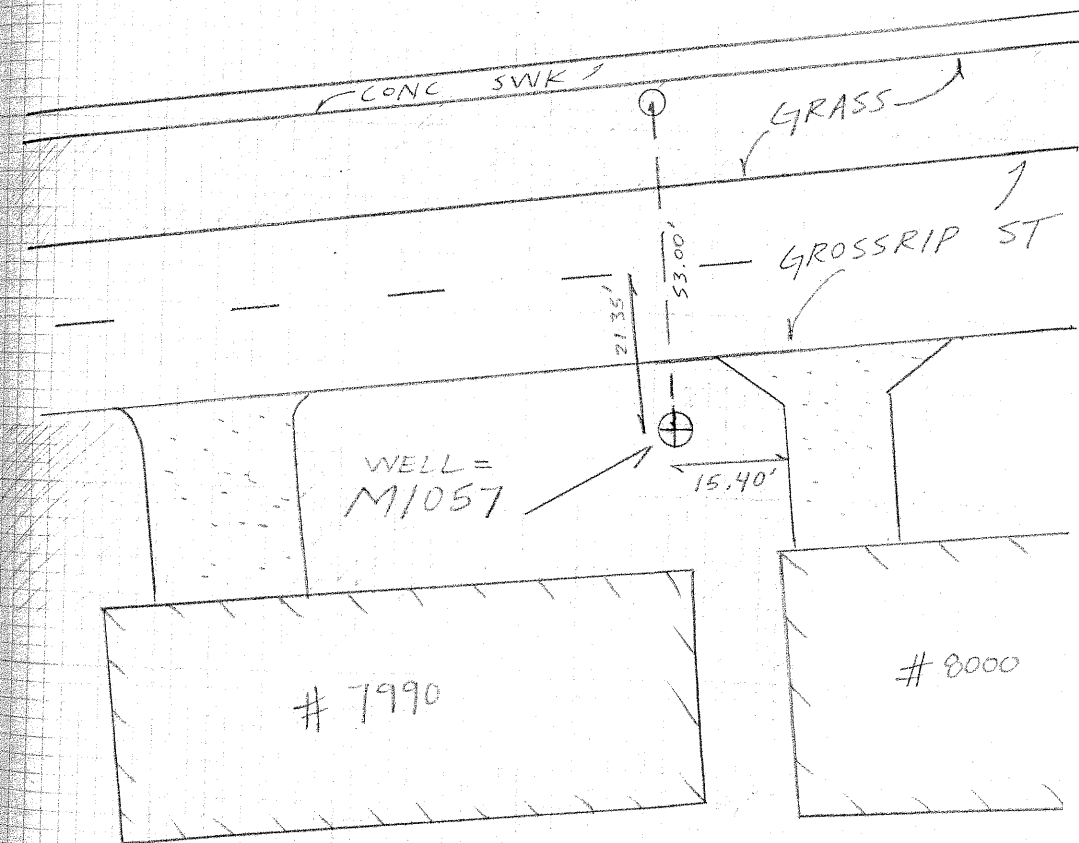
( SITE - F  
DESCRIPTION )

5/8/05

DIRECTIONS - FROM THE INTERSECTION OF US-1 AND  
BRIDGE RD. TRAVEL EAST FOR 0.35 M.  
TO AIA. TURN LEFT AND TRAVEL  
NORTH ON AIA FOR 2.5 MILES  
TO CROSSRIP ST. AT CROSSRIP  
STREET TURN RIGHT AND  
TRAVEL EAST FOR 0.15 MILES  
THE WELL IS ON SOUTH SIDE  
OF ROAD IN FRONT OF HOUSE  
# 7990.



SET S.F.W.M.D  
DISC  
STAMPED  
M1057 2005



A. REIERS  
T. LOPEZ  
C. CHENTLES

#03-77478  
S.F.W.M.D.  
"SITE - 6"

8/15/05

(ESTABLISH  
ELEV ON WELL=  
M1269)

STA	BS	MEAN	HI.	FS	MEAN	ELEV	BM ELEV	DESC
	4.160							
BM	3.320 2.480	3.320	20.950				17.630	NGS# 435618 FIND DISC SIMIAPAL NS17 2001 250' S. OF TWIN RIVERS MOBILE HOME PARK ENTRANCE 3.8' NORTHWEST OF POWER POLE. NAVS 88
TP#1				5.920 4.635 3.350	4.635	16.315		SET CUT NL
SHAKE	7.320 5.845 4.370	5.845	22.160					SET CUT NL
TP#2				6.010 4.600 3.190	4.600	17.560		SET CUT NL
SHAKE	7.470 5.730 3.990	5.730	23.290					SET CUT NL
TP#3				5.415 4.125 2.835	4.125	19.165		SET CUT NL

SAME  
CREW

#03-77478  
S.F.W.M.D.

"SITE-4"

6/15/05

(ELEV. CONT)

STA	BS	MEAN	HI	FS	MEAN	ELEV	BM ELEV	DESC
SHAKE	6.045 5.745 5.445	5.745	24.910					SET CUT NL
M1269				7.370 6.915 6.460	6.915	17.995		TOP OF PIPE WELL = M1269
SHAKE	7.630 6.440 5.250	6.440	24.435					" "
TP # 4				6.420 4.800 3.130	4.800	19.635		SET CUT NL
SHAKE	6.660 4.890 3.120	4.890	24.525					SET CUT NL
TP # 5				6.900 5.610 4.320	5.610	18.915		SET CUT NL

SAME  
CREW

#03-77478  
S.F.W.M.D.  
"SITE-G"

8/15/05

(ELEV. CONT)

STA	BS	MEAN	HI	FS	MEAN ELEV	BM ELEV	DESC
SHAKE	5.760 4.180 2.600	4.180	23.095	✓			SET CUT NL
TP#6				6.800 5.290 3.780	5.290	17.805	✓ SET CUT NL
SHAKE	6.390 4.630 2.870	4.630	22.435	✓			SET CUT NL
TP#7				6.800 5.060 3.320	5.060	17.375	✓ SET CUT NL
SHAKE	6.480 4.975 3.470	4.975	22.350	✓			SET CUT NL
TP#8				6.370 4.995 3.600	4.995	17.355	✓ SET CUT NL

SAME  
CREW

#03-77478  
S.F.W.M.D.

8/15/05

"SITE - G"

(ELEV. CONT)

STA	BS	MEAN	HI	FS	MEAN	ELEV	BM ELEV	DESC
SHAKE	9.380 8.125 6.870	8.125	25.480					SET CUT NL
TP# 9				2.450 1.560 0.670	1.560	23.920		SET CUT NL
SHAKE	4.780 4.520 4.260	4.520	28.440					SET CUT NL
BM				6.170 5.925 5.680	5.925	22.515	22.480	

ERR = 0.035

NGS # AJ 5619  
FND DISC STAMPED LS17 2001  
180' NORTHWEST FROM  $\phi$  OF  
OSPREY ST. 11.2' NORTHEAST OF  
BARBED WIRE FENCE.  
NAVD 88



SAME  
CREW

#03-77473  
S.F.W.M.D.  
"SITE-4"

e/15/05

(ELEV. CONT)

STA	BS	MEAN	HL	FS	MEAN	ELEV.	EM ELEV	DESC
BM	6.940 6.910 6.750	6.610	24.605	✓			17.995	NELL = M1267
DISC. M1267				5.650 5.290 5.780	6.290	18.315	✓	SET S.F.W.M.D. DISC STAMPED M1267
SHAKE	6.800 6.460 6.180	6.460	24.775	✓				" "
EM				6.070 5.610 5.150	5.610	19.165	19.165	TRIP #3 NO ERROR

254 / 30

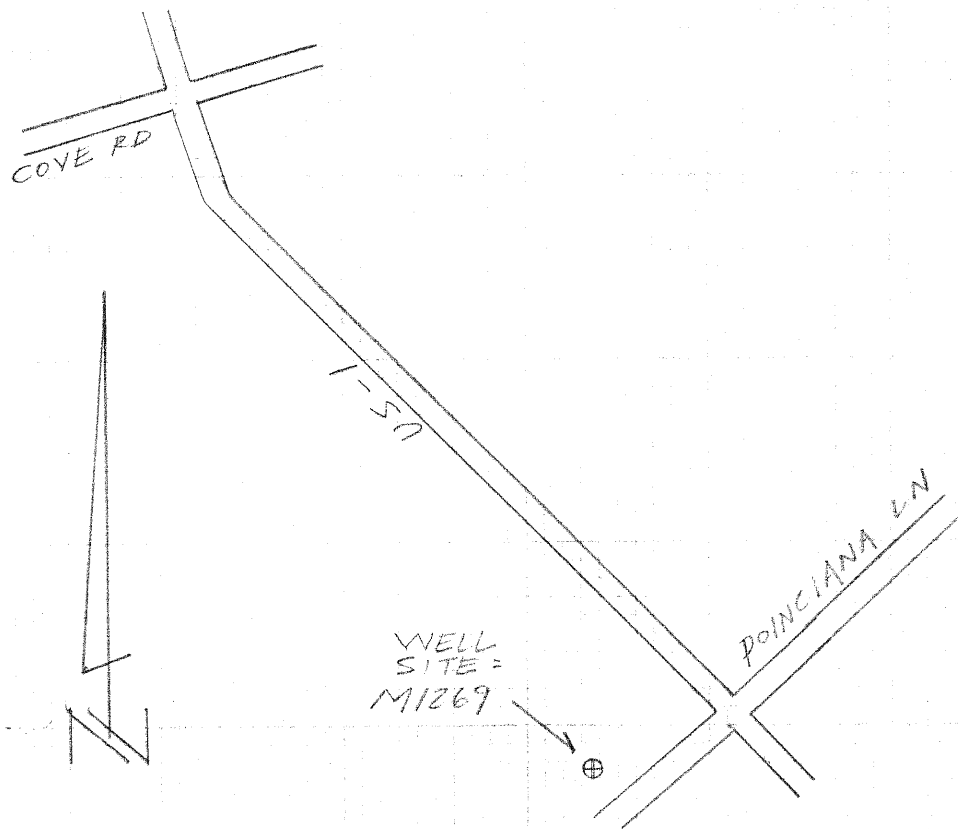
SAME  
CREW

#03-77478  
S.F.W.M.D.

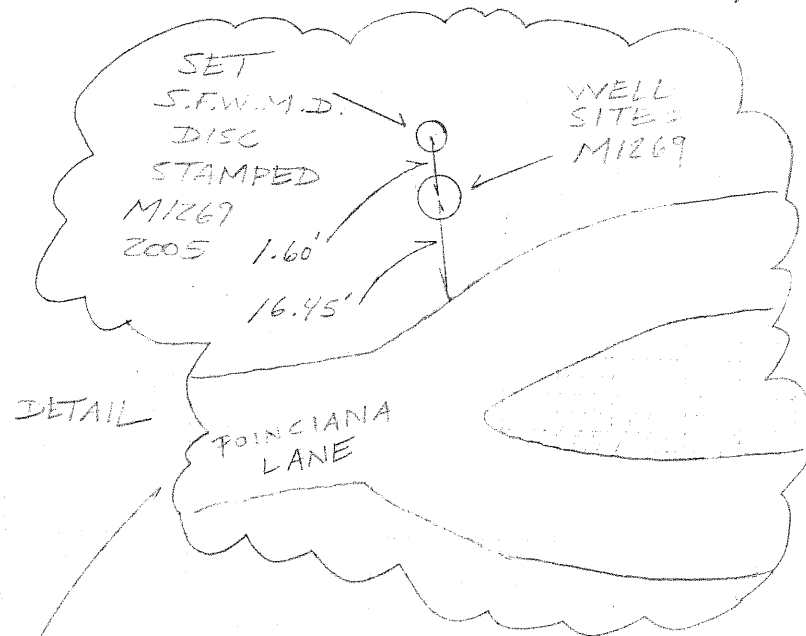
(SITE-G  
DESCRIPTION)

8/15/05

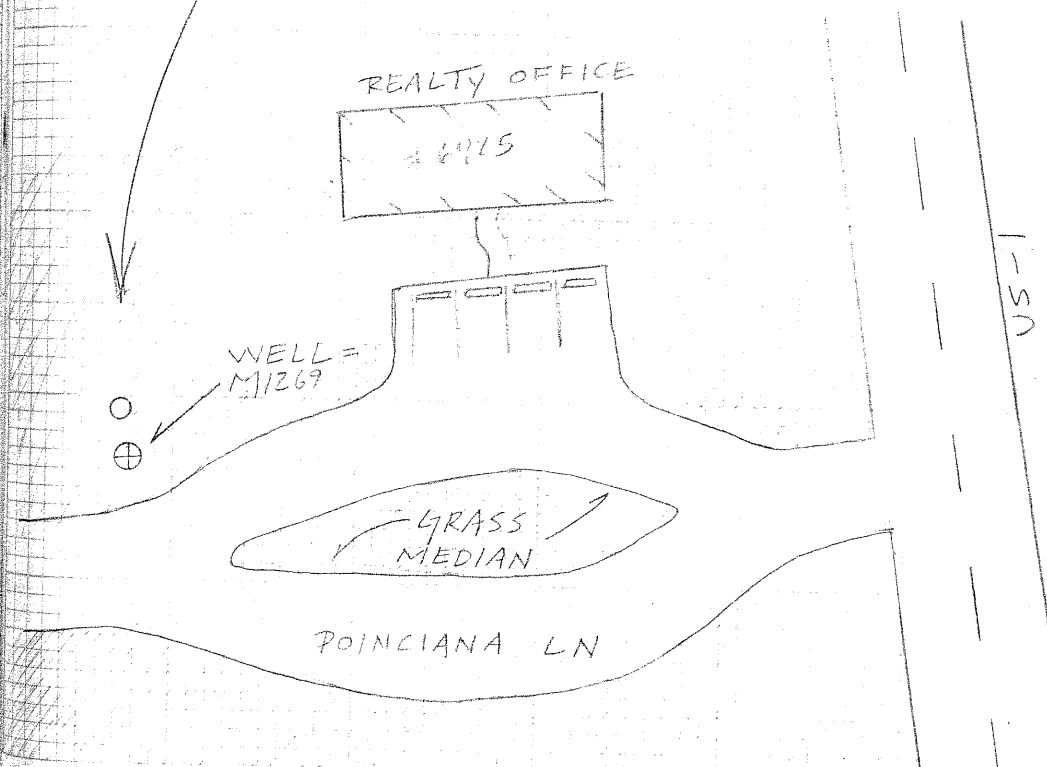
DIRECTIONS - FROM THE INTERSECTION OF  
US-1 AND COVE RD. TRAVEL  
SOUTH ON US-1 FOR 3.1 MILES  
TO POINCIANA LANE. TURN  
RIGHT AND TRAVEL WEST.  
THE WELL IS ON NORTH SIDE  
OF POINCIANA LANE RIGHT  
AFTER YOU PASS REALTY OFFICE  
AT THE END OF MEDIAN STRIP.



2548/39



DETAIL



A. REJERO  
T. LOPEZ  
A. SAITANA

#03-77478  
S. F. W. M. D.  
"SITE - H"

6/13/05

ESTABLISH  
ELEV. ON WELLS  
M1235, M1270

STA	BS	MEAN	HI	FS	MEAN	ELEV	BM ELEV	DESC
BM	4.860 4.320 3.780	4.320	45.75 4.575				✓ 41.430	NGS # AC5345 725 BRASS STAMPED I 95 87 A BY REF MK 2. IN MEDIAN AT N. EDGE OF BRIDGE IN CONC. GUTTER 9.5' NORTH OF THE NW END OF SOUTHWEST BRIDGE. NAVD 83
TP#1				16.540 16.535 15.530	15.535	29.715	✓	SET 3" I SPIKE
SHAKE	3.010 2.850 2.690	2.850	32.565					SET 5" I SPIKE
TP#2				14.630 14.310 13.990	14.310	18.255	✓	SET CUT NL
SHAKE	7.360 5.970 4.580	5.970	24.225					SET CUT NL
TP#3				7.590 5.730 3.870	5.730	18.495	✓	SET CUT NL



SAME  
CREW

#-3-70478  
STATION  
ELEVATION

3/13/05

(ELEV. CONT)

STA	BS	MEAN HI	FS	MEAN ELEV	B/M ELEV	SIDE
SHAKE	3.91 3.91 3.91	3.91	20.695			WELL = M1235
M1270			5.125 5.23 5.175	5.13	15.165	WELL = M1270
SHAKE	5.420 5.240 5.060	5.240	20.405			WELL = M1270
TP45			3.550 3.030 2.510	3.030	17.375	SET CUT NL
SHAKE	7.910 7.390 6.870	7.390	24.765			SET CUT NL
TP46			7.390 6.560 5.730	6.560	18.215	SET CUT NL

SAME  
CREW

#03-77478  
S.F.W.M.D.  
"SITE-H"

3/15/05

(ELEV. CONT)

STA	BS	MEAN	HI	FS	MEAN	ELEV	BM ELEV	DESC
	7.260							
SHAKE	5.790 4.320	5.790	24.005					SET CUT NL
TP#7				7.250 5.510 3.770	5.510	18.495		SET CUT NL
SHAKE	6.920 5.480 4.040	5.480	23.975					SET CUT NL
TP#8				7.510 5.710 3.910	5.710	18.265		SET CUT NL
SHAKE	13.030 12.715 12.460	12.745	31.010					SET CUT NL
TP#9				1.440 1.290 1.140	1.290	29.720		SET GOOD SPIKE

SAME  
CREW

#03-77478  
S.F.W.M.D.  
"SITE-H"

8/18/05

(ELEV. CONT.)

STA	BS	MEAN	HI	FS	MEAN	ELEV	BM ELEV	DESC
-----	----	------	----	----	------	------	------------	------

	18.210							
SHAKE	17.750	17.750	47.470					SET 80 D SPIKE
	17.290							

BM		5.705						
		5.445	5.445		42.025	42.000		
		5.185						

ERR = 0.025

NGS # ACS343 FDOT BRASS I.D.  
STAMPED I 95 89 A 24  
IN MEDIAN AT NORTH END OF  
BRIDGE. 4.6' N. OF THE N.  
CONC. GUARDRAIL BETWEEN  
N. AND S. LANES.  
NAVD 88.

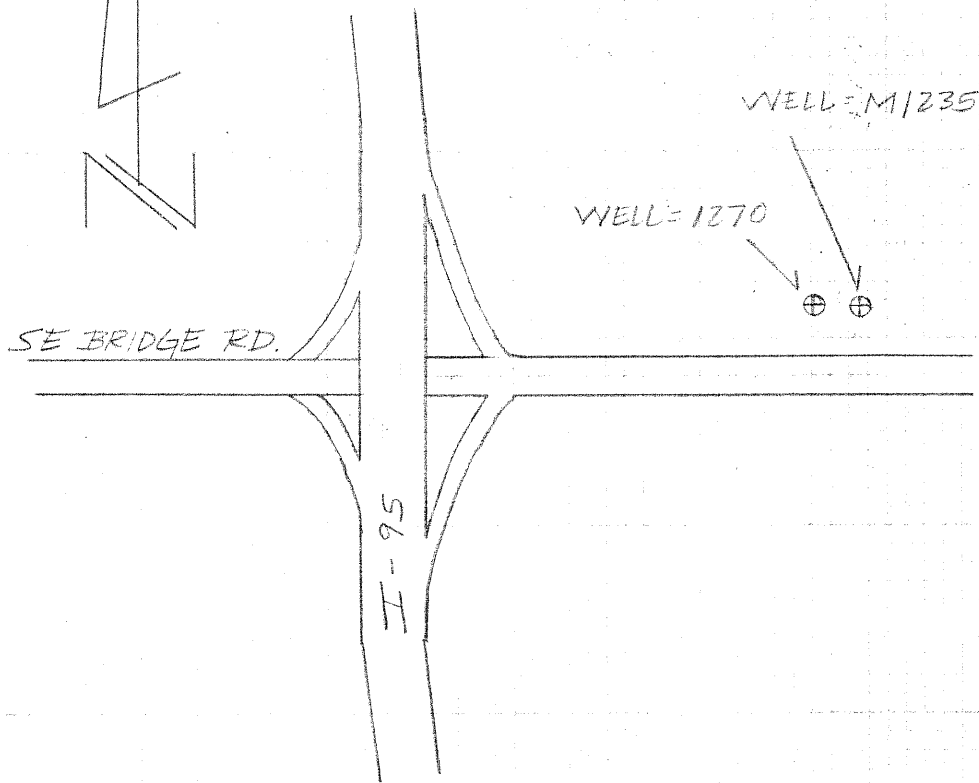
SAME  
CREW

#03-77478  
S.F.W.M.D

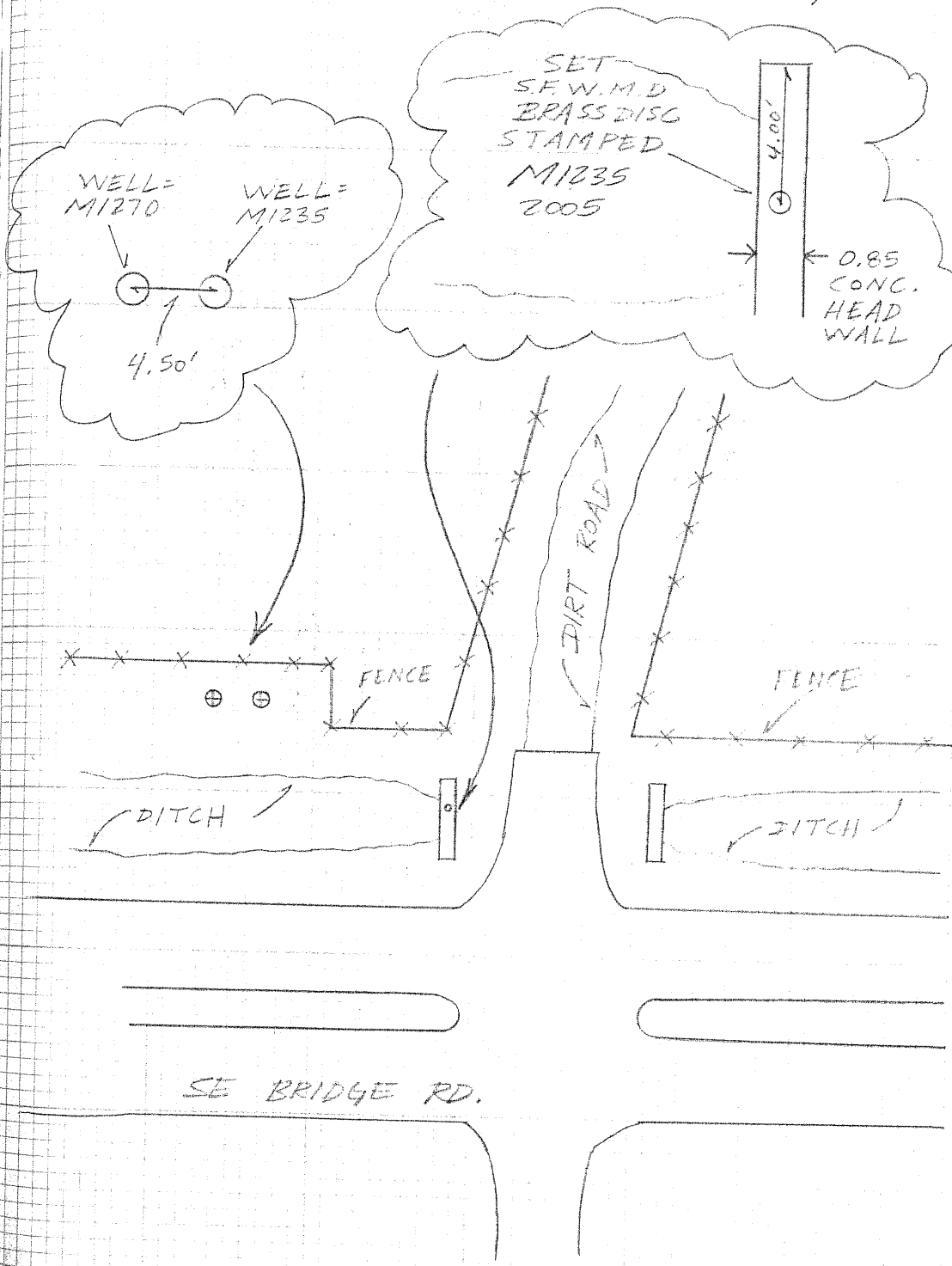
8/18/05

(SITE - H  
DESCRIPTION)

DIRECTIONS - FROM THE INTERSECTION OF  
I-95 AND BRIDGE RD. TRAVEL  
EAST ON BRIDGE RD. FOR 0.3  
MILES. TURN NORTH ON  
DIRT RD AND PARK IN BETWEEN  
DITCH AND FENCE LINE.  
THE WELL IS ON THE NORTH  
SIDE OF THE ACCESS RD. AND  
67' WEST OF DIRT RD.



2543 / 45





A. REJERO  
T. LOPEZ  
A. LOPEZ

#03-77478  
S.F.W.M.L.

3/19/05

"SITE - I"

(ESTABLISH  
ELEV ON WELL =  
M1081)

STA	BS	MEAN	HI	FS	MEAN	ELEV	BM ELEV	DESC
BM	8.520 7.140 5.760	7.140	32.270				25.130	NGS#AJ8248 FND DISC STAMPED NS22 2001 CERP 48.6 N. OF $\phi$ OF KANNER RD 37.0 S. OF POWER POLE W/ GUY WIRE ON W. SIDE OF GATE. NAVD 88
TP# 1				6.590 5.035 3.480	5.035	27.235		SET CUT NL
SHAKE	6.150 5.255 4.360	5.255	32.490					SET CUT NL
M1081				5.035 4.665 4.235	4.665	27.825		WELL # M1081
SHAKE	4.630 4.255 3.235	4.255	32.075					SET CUT NL
TP# 2				5.730 4.840 3.750	4.840	27.235		SET CUT NL

SAME  
CREW

#03-77478  
S.F.W.M.D

2548/47

8/19/05

"SITE - I"

(ELEV. CONT)

STA	BS	MEAN	HI	FS	MEAN	ELEV	BM ELEV	DESC
SHAKE	7.000 5.250 3.500	5.250	32.485					SET CUT NL
TP# 3				7.660 5.295 3.530	5.295	27.190		SET CUT NL
SHAKE	7.370 5.300 3.230	5.300	32.490					SET CUT NL
TP# 4				7.760 5.560 3.360	5.560	26.930		SET CUT NL
SHAKE	8.200 6.095 3.990	6.095	33.025					SET CUT NL
TP# 5				7.030 4.825 2.620	4.825	28.200		SET CUT NL

SAME  
CREW

#03-77478  
S. F. W. M. D

" SITE - I "

8/19/05

(ELEV. CONT)

STA	BS	MEAN	HI	FS	MEAN	ELEV	BM ELEV	DESC
SHAKE	6.520 4.190 1.860	4.190	32.390 ✓					SET CUT NL
TP# 6				7.450 5.210 2.970	5.210	27.180 ✓		SET CUT NL
SHAKE	7.460 4.720 1.980	4.720	31.900 ✓					SET CUT NL
TP# 7				7.000 4.945 2.890	4.945	26.955 ✓		SET CUT NL
SHAKE	7.170 5.330 3.490	5.330	32.785 ✓					SET CUT NL
TP# 8				7.640 5.370 3.100	5.370	26.915 ✓		SET CUT NL

SAME  
CREW

#03-77478  
S.F.W.M.D.

8/19/05

"SITE-I"

(ELEV. CONT)

STA	BS	MEAN	HI	FS	MEAN	ELEV	BM ELEV	DESC
	6.620							
SHAKE	4.800 2.980	4.800	31.715	✓				SET CUT NL
				8.050				
BM				6.810	6.810	24.905	24.870	
				5.570				

↓ ↓  
 24.905 24.870  
 \ /  
 ERR = 0.035 /  
 NGS # AJ8247 END FLANGE  
 ENCASED ROD STAMPING  
 M 522 2001 CERP  
 0.2 MILES WEST OF ENTRANCE  
 TO PAYSON PARK, 120' S. OF  
 C. OF ROAD, 4.0' NORTH OF  
 WOODEN FENCE.  
 NAVD 88

A. REISER  
 A. LOPEZ  
 M. MOYA

7/2/05

#03-17478  
 S.F.W.M.D.  
 "SITE II"

(ELEV CONT)

STA	BS	MEAN	HI	FB	MEAN
M1081	4.945 4.050 3.655	4.050	31.875		

DISC M1081				6.950 6.730 6.480	6.730	25.145
---------------	--	--	--	-------------------------	-------	--------

SHAKE	6.900 6.570 6.240	6.570	31.715			
-------	-------------------------	-------	--------	--	--	--

TP # 1				5.110 4.480 3.850	4.480	27.235
--------	--	--	--	-------------------------	-------	--------

ELEV	ZM ELEV	DESC
	27.825	WELL SITE = M1081

SET S.F.W.M.D BRASS D.  
 STAMPED M1081 3005

|| ||

	27.235	27.235	OUT NL
	No error		

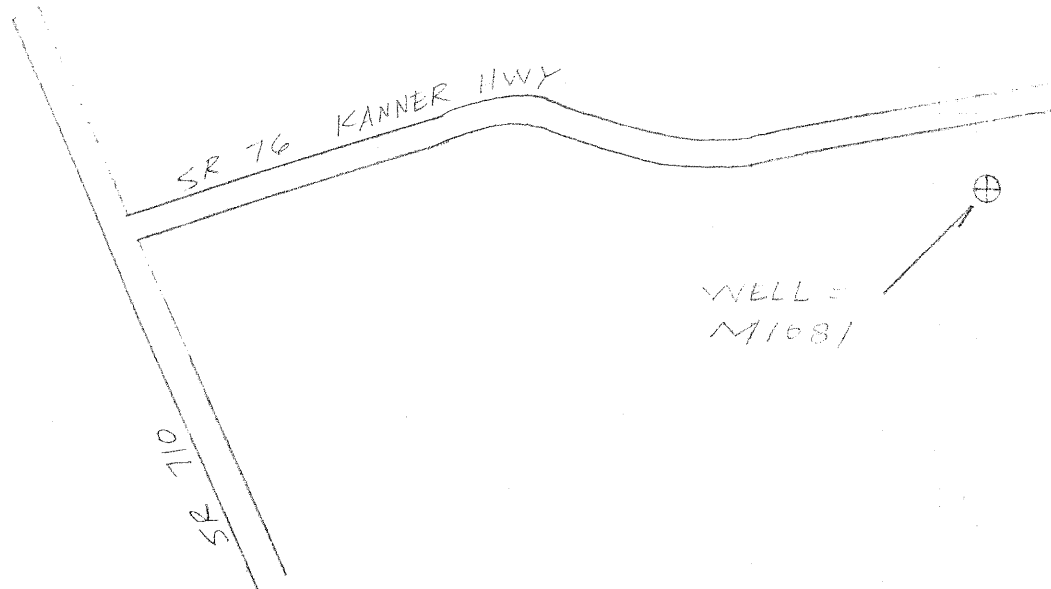
SAME  
CREW

#03-77473  
S.F.W.M.D.

( SITE - I  
DESCRIPTION )

9/2/05

DIRECTIONS - FROM THE INTERSECTION  
OF BEELINE HWY (SR 710) AND  
KANNER HWY (SR 76) TRAVEL  
EAST ON KANNER HWY FOR  
5.35 MILES. THE WELL IS TO  
THE RIGHT IN THE SOUTHERN  
ROADSIDE EASEMENT, DIRECTLY  
ACROSS FROM HOUSE # 3025.  
ABOUT 40.75' SOUTH OF EP.

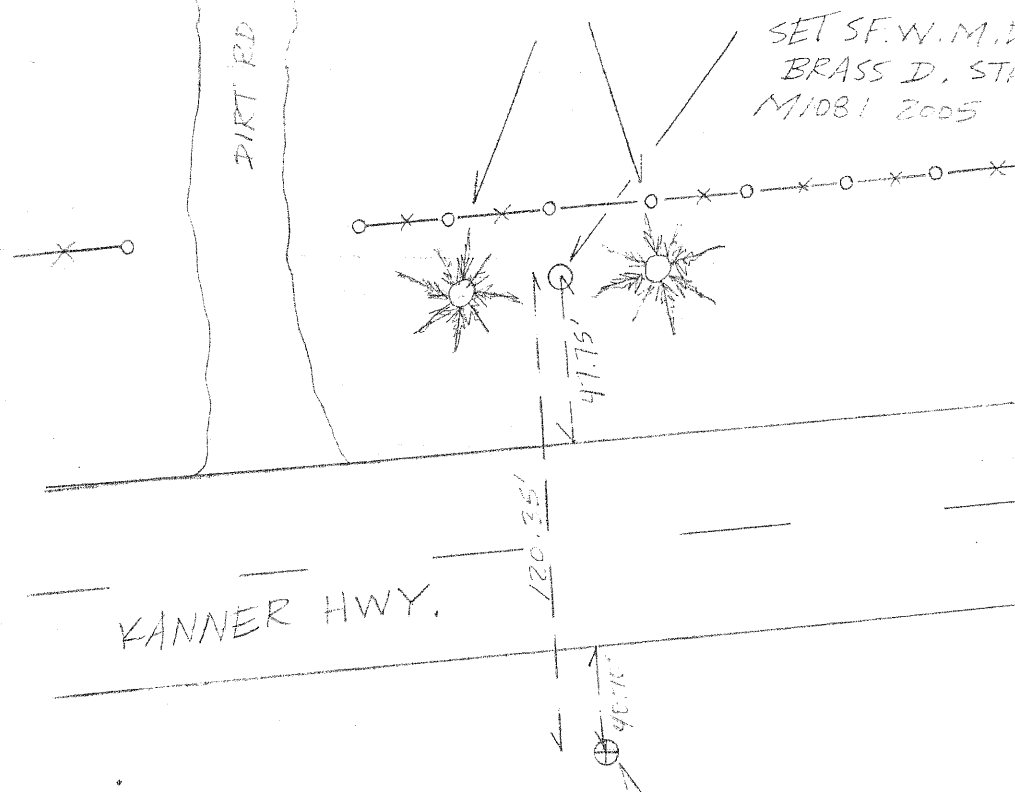


2545/51

DIRT RD TO HOUSE # 3025

PINE TREES

SET S.F.W.M.D.  
BRASS I.D. STAMP.  
M1081 2005



KANNER HWY.

WELL =  
M1081

WELL SITE =  
M1081

SAME  
CREW

#02-11473  
S.F.W.M.D  
" SITE - I "

9/2/05

(ESTABLISH  
ELEV. ON WELL  
M1045)

STA	BS	MEAN	HI	FS	MEAN	BM ELEV. ELEV	DESC
	6.755						
BM	5.010	5.010	30.740			25.730	M45 #4J0864 TND DICK #347 40 EAST 595 N. 135 E TRENCH SR TO AND SR TO 30.4' N OF A SH 110 17.5' S OF NUMBER 7511 NOTE BS
	3.270						SET CUT NL
TP #1				5.540	4.090	26.650	
				4.970			
				2.640			
SHAPE	5.920						
	4.340	4.340	30.970				SET CUT NL
	2.760						
TP #2				5.280	4.380	26.630	
				4.360			SET CUT NL
				3.440			
SHAPE	4.510						
	4.135	4.135	30.765				SET CUT NL
	3.760						
M1045				6.710	6.315	24.450	TOP OF PIPE WELL - M1045
				3.315			
				5.920			

SAME  
CREW

#23-77478  
SITE J

"SITE - J"

9/23/05

BLIND GROUT

STA	BS	MEAN	HI	FS	MEAN
SHAKE	6.975 6.470 6.075	6.470	30.920		
TP # 3				4.665 4.285 3.905	4.285
SHAKE	6.000 4.535 3.050	4.535	31.170		
TP # 4				5.960 4.530 3.100	4.530
SHAKE	5.790 4.420 2.850	4.420	31.060		
TP # 5				5.720 4.285 2.850	4.285

ZM  
ELEV ELEV DEISC

TOP OF PIPE WELL = M1045

26.635 ✓ SET CUT NL

SET CUT NL

26.645 ✓ SET CUT NL

SET CUT NL

26.775 ✓ SET CUT NL



SAME  
CRSV.

#03-7713  
S.F.W.M.D.

2/2/05

"SITE-J"

(ELEV. CONT)

STA	BS	MEAN	HI	FS	MEAN	ELEV	BM ELEV	DESC
SHAKE	5.950 4.440 2.930	4.440	31.215	✓				SET CUT NL
TP# 6				5.860 4.340 2.800	4.340	26.875	✓	SET CUT NL
SHAKE	6.130 4.400 2.670	4.400	31.275	✓				SET CUT NL
TP# 7				6.070 4.505 2.940	4.505	26.770	✓	SET CUT NL
SHAKE	6.070 4.370 2.670	4.370	31.140	✓				SET CUT NL
TP# 8				6.320 4.465 2.610	4.465	26.675	✓	SET CUT NL

SADSE  
COPEN

#03-77473  
S. F. W. M. E

9/2/05

"SITE J"

(ELEV. CONT)

STA	BS	MEAN	HI	FS	MEAN	ELEV	BM ELEV	DESS
SHAKE	6.37 4.45 2.93	4.450	31.125					SET CUT NL
TP#9				6.200 4.470 2.740	4.470	26.655 ✓		SET CUT NL
SHAKE	6.385 4.340 2.300	4.340	30.995					SET CUT NL
TP#10				6.150 4.560 2.970	4.560	26.435 ✓		SET CUT NL
SHAKE	6.190 4.395 2.600	4.395	30.830					SET CUT NL
TP#11				5.660 4.215 2.770	4.215	26.615 ✓		SET CUT NL

SAME  
CROSS

#03-77478  
S. F. W. M. D.

"SITE - J"

(ELEV. CONT)

7/3/85

STA	BS	MEAN	HI	FS	MEAN	ELEV	BM ELEV	DESC
SHAKE	6.570 4.415 2.760	4.415	31.030 ✓					SET CUT NL
TP#12				5.720 4.500 3.270	4.500	26.530 ✓		SET CUT NL
SHAKE	5.736 4.210 2.690	4.210	30.740 ✓					SET CUT NL
BM				7.870 5.890 4.720	5.890	24.860 ✓	24.880	NG5# AJ8886 FND FLANGE ENCASED ROD. STAMP. E 247 GO EAST FOR 5 MILES FROM INTER. OF SR 710 AND SR 76. 20.7' N OF C. OF RD. 11.4' S. OF WITNESS POST NAME 88.
						ERR: 0.020		

A. FEDERO  
T. LOPEZ  
M. MOYA

#03-77478  
S.F.W.M.D

"SITE - J"

9/6/05

(ELEV. CONT.)

STA	BS	MEAN	HI	FS	MEAN	ELEV	BM ELEV	DESC
BM	6.550 6.140 5.730	6.140	30.590 ✓				24.450	TOP OF PIPE = M1045
DISC M1045				5.905 5.285 5.165	5.285	25.305 ✓		SET J.F.W.M.D BRASS D. STAMPED M1045 2005
SHAKE	5.910 5.735 5.660	5.735	31.090 ✓					" "
BM				4.670 4.460 4.250	4.460	26.630 ✓	26.630	TP #1 SET CUT NL NO ERROR

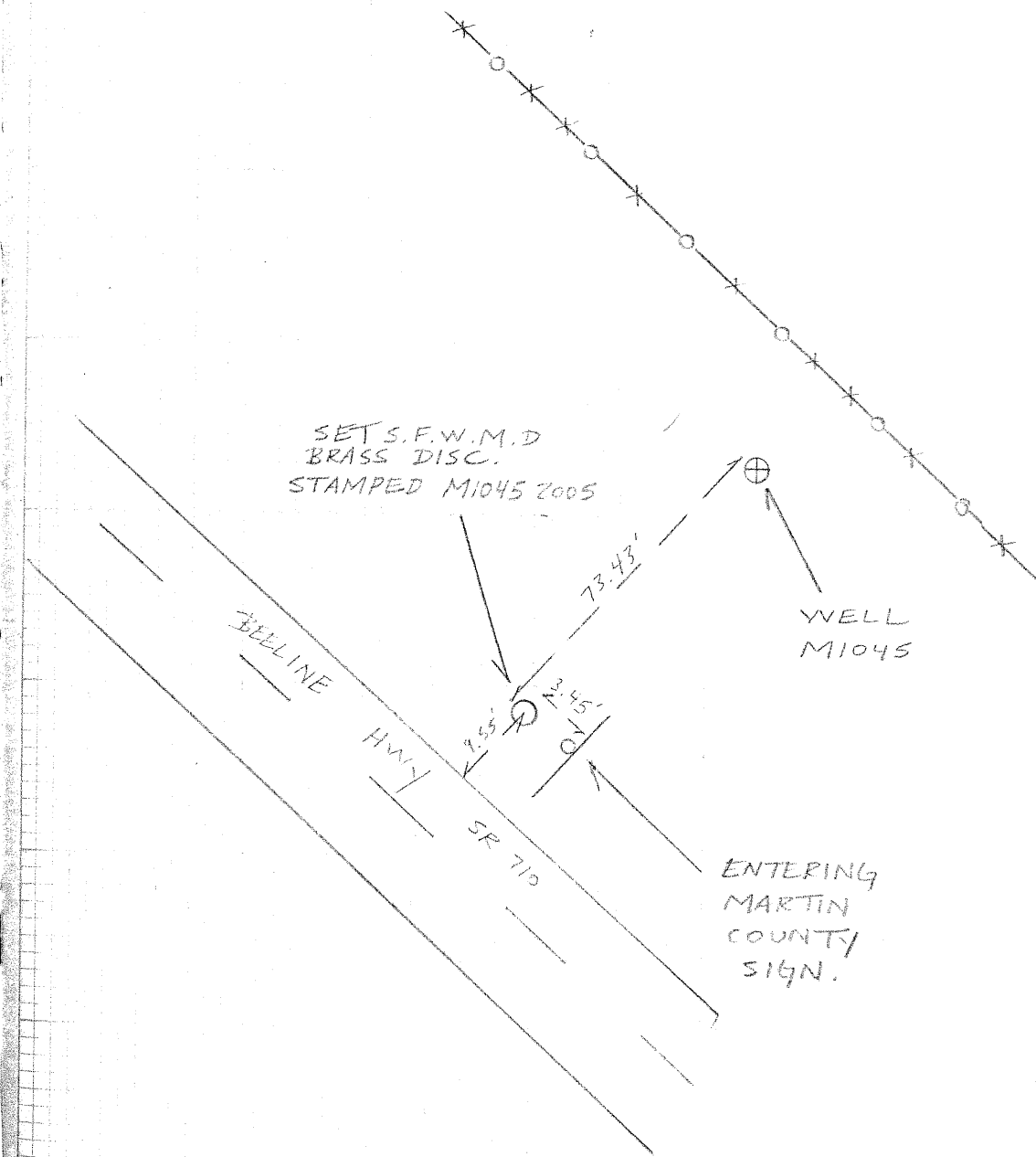
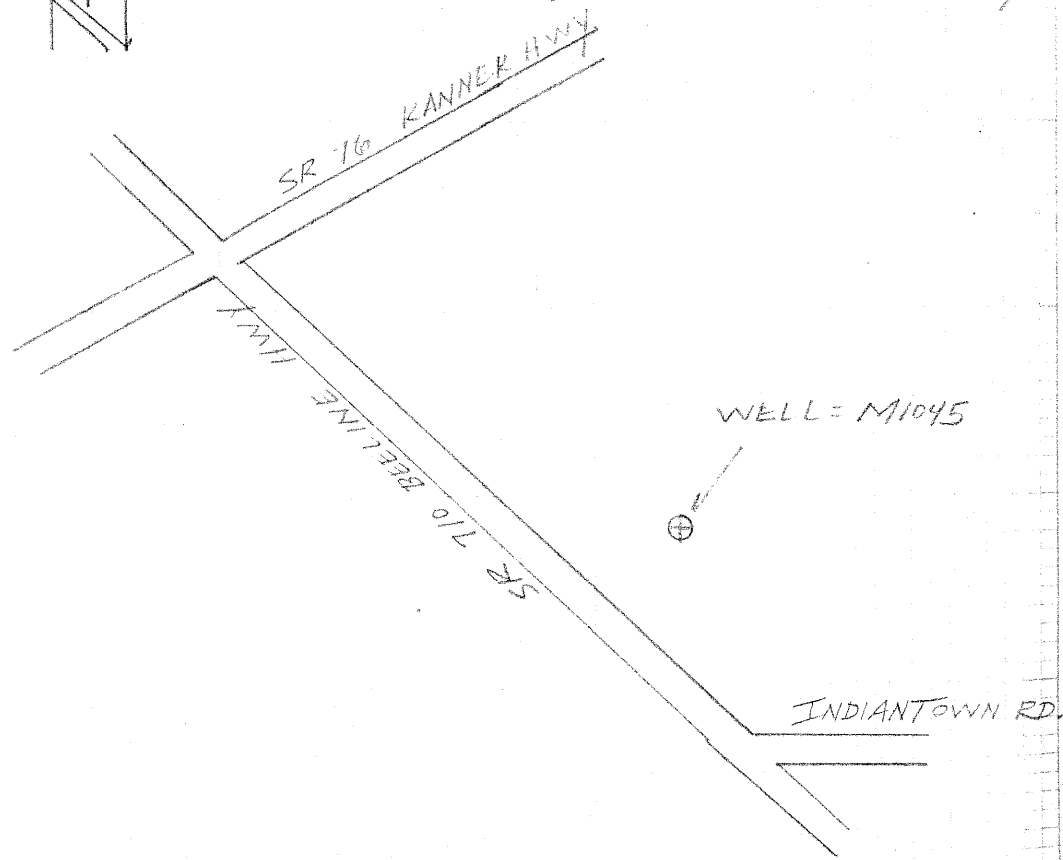
SAME  
CREW

#03-77478  
S.F.W.M.D.

( SITE - J  
DESCRIPTION )

9/6/05

DIRECTIONS - FROM THE INTERSECTION  
OF BEELINE HWY (SR 710)  
AND KANNER HWY (SR 16)  
TRAVEL SOUTHEAST ON  
BEELINE HWY FOR 6.05 MILES.  
THE WELL IS ON THE LEFT  
BY THE SIGN, ENTERING  
MARTIN COUNTY, 83.00' FT.  
NORTHEAST OF EDGE OF  
PAVEMENT, OF BEELINE HWY.

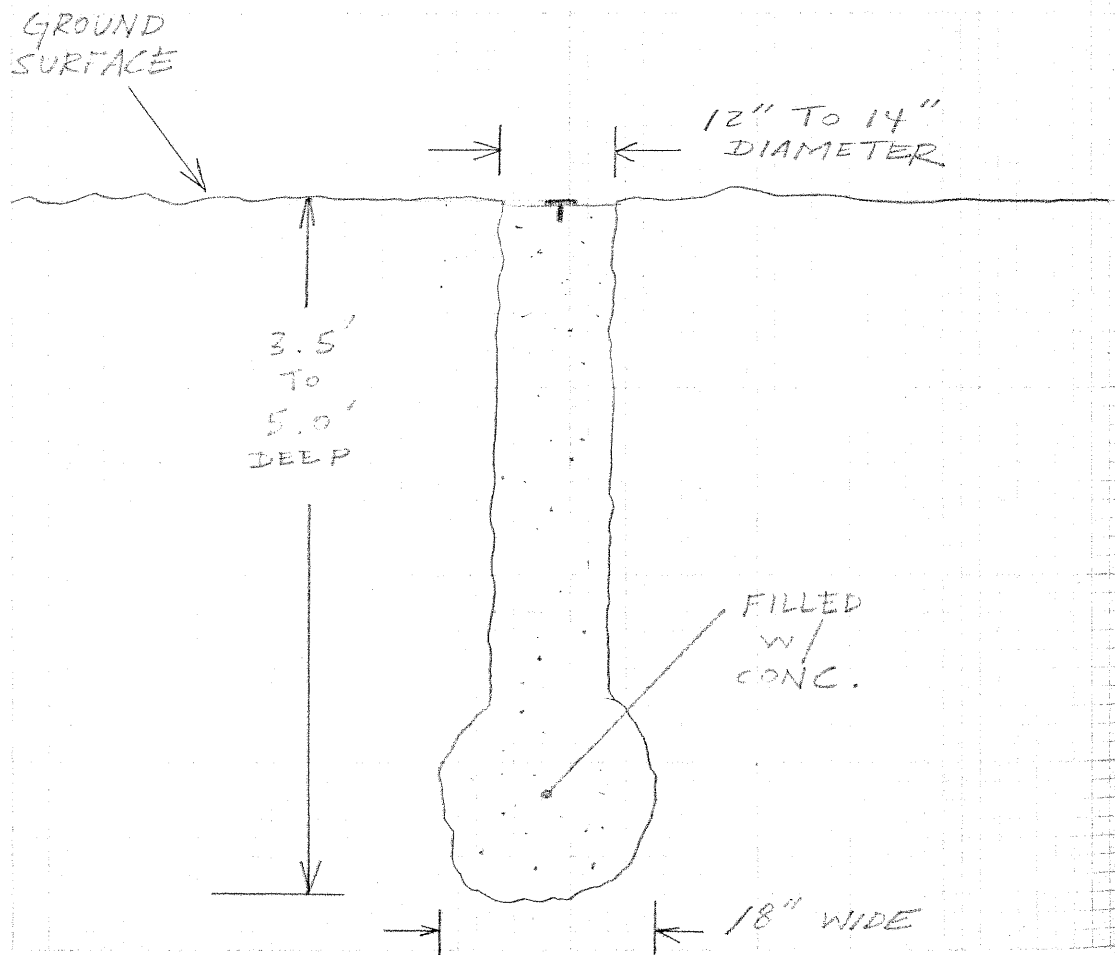


A. REDERO  
T. LOPEZ  
M. MOYA

#05-07718  
S.F.W.M.D.

9/12/05

NOTE: ALL CONCRETE MONUMENTS  
WHERE SET ACCORDING TO  
NGS STANDARDS.





SOUTH FLORIDA WATER MANAGEMENT DISTRICT

Rev. 10/10/05

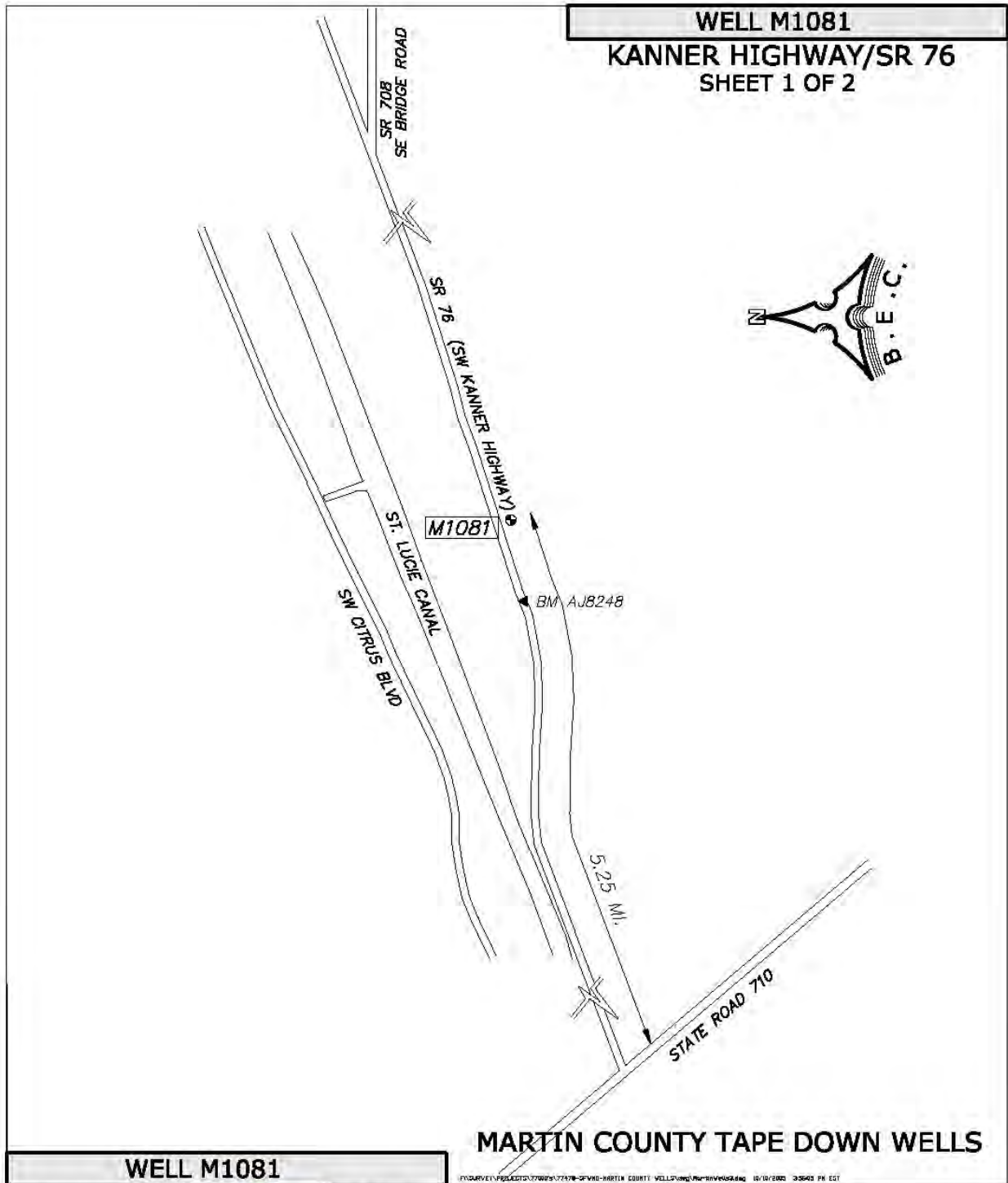
COUNTY	MARTIN	PROJECT	KANNER HWY	DESIGNATION	M1081 2005
SECTION	<u>31</u>	TOWNSHIP	<u>39S</u>	RANGE	<u>40E</u>
GEOGRAPHIC INDEX OF QUAD <u>Florida</u>					
Established by Biscayne Engineering Company, Inc.			NAME OF QUADRANGLE <u>INDIAN TOWN SE</u>		
SURVEYOR <u>Mike J. Bartholomew</u> DATE <u>09 / 26 / 2005</u>			FIELD BOOK <u>2548</u> PAGE <u>46</u>		
HORIZONTAL DATUM: 1927 <input type="checkbox"/> <b>1983</b> <input checked="" type="checkbox"/> Other _____ (circle one) ZONE <u>0901 (EAST)</u>					
VERTICAL DATUM: MSL 1929 <input type="checkbox"/> <b>1988</b> <input checked="" type="checkbox"/> Other _____ (circle one)					
CONTROL ACCURACY: HORIZONTAL 1 <input type="checkbox"/> 2 <input type="checkbox"/> 3 <input checked="" type="checkbox"/> <b>SUB-METER</b> (circle one) VERTICAL 1 <input type="checkbox"/> 2 <input type="checkbox"/> <b>3</b> <input checked="" type="checkbox"/>					
STATE PLANE COORDINATES <u>M1081 (U.S. Survey feet)</u>		X= <u>860628.33</u>		Y= <u>984199.04</u> DISC EL.= <u>25.15'</u> (NAVD-88)	
LATITUDE M1081 <u>27°02'23.780"N</u>			LONGITUDE <u>080°22'18.731"W</u>		
<b>DESCRIPTION</b>					
Benchmark is situated on the North side of State Road 76 (Kanner Highway), East of State Road 710 (Beeline Highway), West of Bridge Road (S.R. 708), in Section 31, Township 39 South, Range 40 East, Martin County, Florida					
<b>TO REACH</b> the benchmark from the intersection of State Road 76 (Kanner Highway) and State Road 710 (Beeline Highway) in Indiantown, travel Northeast on State Road 76 (Kanner Highway) for 5.25 (more or less) to residence #8625 and the benchmark on the left (Northwest) side of the road. Benchmark is situated 47.8 feet (more or less) North of the North edge of pavement for State Road 76, and 120.4 feet (more or less) North of well M1081. Benchmark is a standard SFWMD stamped "M1081 2005" set in a concrete monument between 2 pine trees, SE of the drive for residence #8625					
Origin of NAVD88 elevation for BM "M1081" is closed bench level circuit through NGS benchmarks AJ8248 (N522 2001 CERP) and AJ8247 (M522 2001 CERP)					

SKETCH: SEE PAGE 2 and 3



SOUTH FLORIDA WATER MANAGEMENT DISTRICT

Rev. 10/10/05



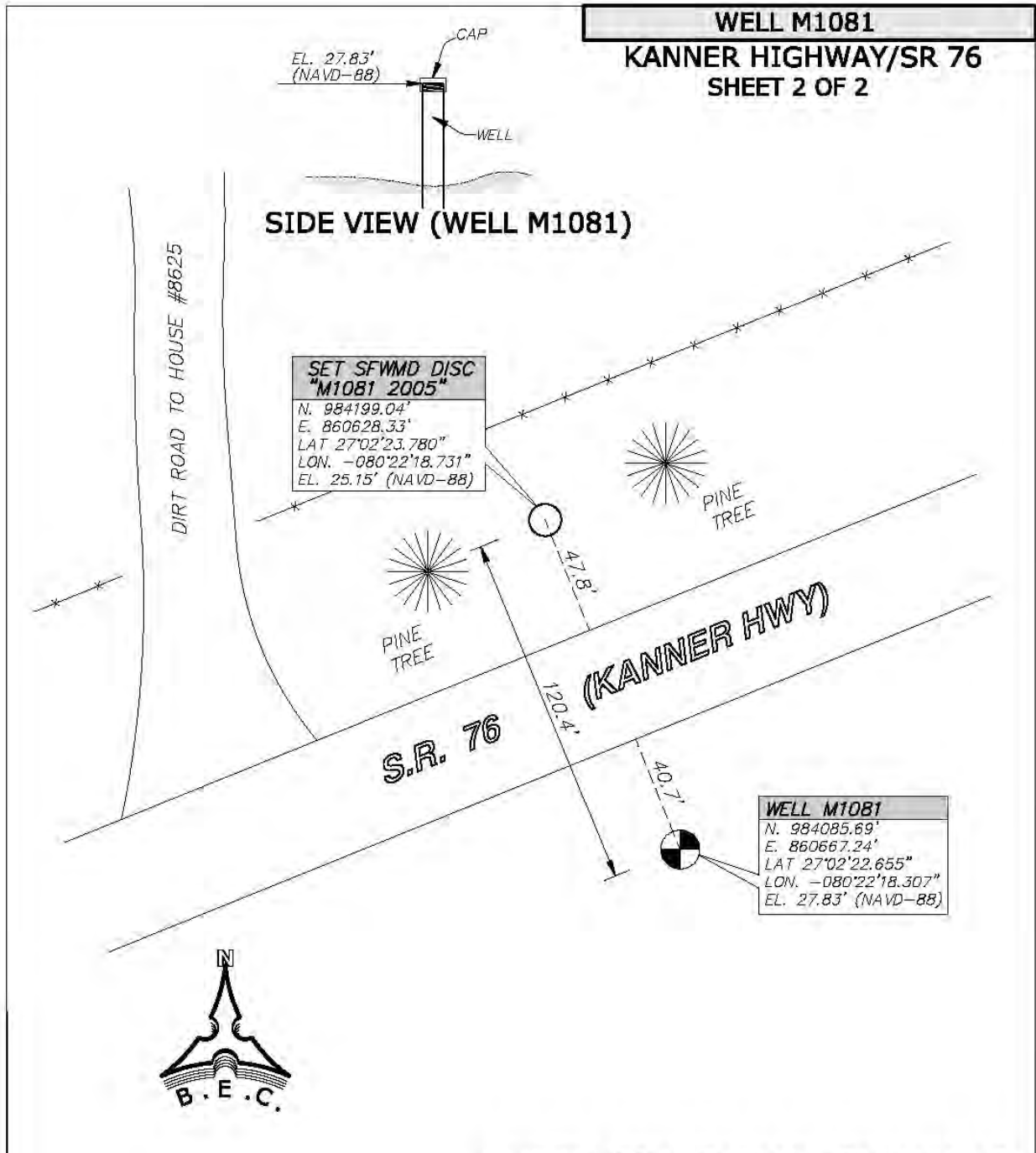
**WELL M1081**  
**KANNER HIGHWAY/SR 76**  
**SHEET 1 OF 2**

**WELL M1081**

**MARTIN COUNTY TAPE DOWN WELLS**

PREPARED FOR: <b>SOUTH FLORIDA WATER MANAGEMENT DISTRICT</b>		<b>FIELD BOOK:</b> 2548	<b>DATE:</b> 10/10/05	<b>ORDER NO.:</b> 03-77478
PREPARED BY: <b>BISCAYNE ENGINEERING COMPANY, INC.</b> Consulting Engineers Planners Surveyors 529 WEST FLAGLER STREET, MIAMI, FL. 33130 - TEL (305)324-7671 - FAX (305)324-0809 LB #0129				





MARTIN COUNTY TAPE DOWN WELLS

<b>WELL M1081</b>		<small>(\SURVEY\PROJECTS\7726\7726-SFWMD-MARTIN COUNTY WELLS\DWG\M1081\DWG1.DWG 10/10/2005 3:56:43 PM EDT)</small>	
PREPARED FOR:		FIELD BOOK: 2548	DATE: 10/10/05
<b>SOUTH FLORIDA WATER MANAGEMENT DISTRICT</b>		ORDER NO.: 03-77478	
		PREPARED BY: <b>BISCAYNE ENGINEERING COMPANY, INC.</b> Consulting Engineers Planners Surveyors 529 WEST FLAGLER STREET, MIAMI, FL. 33130 - TEL (305)324-7671 - FAX (305)324-0809 LB #0129	

From the "ngvd29.txt" file provided by NGS for the CERP Geodetic Vertical Control Project.  
 Line/Part: L26243 SSN+: mark floated, SSN\*: mark constrained, SSN#: mark floated  
 & constrained

Mark ID	SSN	PID	Designation	Geopotential	Elevation	Codes
1759	2919	AJ8247	M 522	7.8358	7.9957	
1760	2920	AJ8248	N 522	7.9196	8.0812	

## The NGS Data Sheet

See file [dsdata.txt](#) for more information about the datasheet.

DATABASE = Sybase ,PROGRAM = datasheet, VERSION = 7.27

1 National Geodetic Survey, Retrieval Date = SEPTEMBER 20, 2005

AJ8248 \*\*\*\*\*

AJ8248 DESIGNATION - N 522

AJ8248 PID - AJ8248

AJ8248 STATE/COUNTY- FL/MARTIN

AJ8248 USGS QUAD - INDIAN TOWN SE (1983)

AJ8248

AJ8248 \*CURRENT SURVEY CONTROL

AJ8248

AJ8248\* NAD 83(1999)- 27 02 21.33069(N) 080 22 26.67481(W) ADJUSTED

AJ8248\* NAVD 88 - 7.660 (meters) 25.13 (feet) ADJUSTED

AJ8248

AJ8248 X - 950,598.514 (meters) COMP

AJ8248 Y - -5,604,852.453 (meters) COMP

AJ8248 Z - 2,882,082.041 (meters) COMP

AJ8248 LAPLACE CORR- -1.85 (seconds) DEFLEC99

AJ8248 ELLIP HEIGHT- -19.21 (meters) (12/12/02) GPS OBS

AJ8248 GEOID HEIGHT- -26.88 (meters) GEOID03

AJ8248 DYNAMIC HT - 7.649 (meters) 25.10 (feet) COMP

AJ8248 MODELED GRAV- 979,098.2 (mgal) NAVD 88

AJ8248

AJ8248 HORZ ORDER - FIRST

AJ8248 VERT ORDER - FIRST CLASS II

AJ8248 ELLP ORDER - THIRD CLASS I

AJ8248

AJ8248.The horizontal coordinates were established by GPS observations

AJ8248.and adjusted by the National Geodetic Survey in December 2002.

AJ8248

AJ8248.The orthometric height was determined by differential leveling

AJ8248.and adjusted by the National Geodetic Survey in April 2002.

AJ8248

AJ8248.The X, Y, and Z were computed from the position and the ellipsoidal ht.

AJ8248

AJ8248.The Laplace correction was computed from DEFLEC99 derived deflections.

AJ8248

AJ8248.The ellipsoidal height was determined by GPS observations

AJ8248.and is referenced to NAD 83.

AJ8248

AJ8248.The geoid height was determined by GEOID03.

AJ8248

AJ8248.The dynamic height is computed by dividing the NAVD 88

AJ8248.geopotential number by the normal gravity value computed on the

AJ8248.Geodetic Reference System of 1980 (GRS 80) ellipsoid at 45

AJ8248.degrees latitude (g = 980.6199 gals.).

AJ8248

AJ8248.The modeled gravity was interpolated from observed gravity values.

AJ8248

AJ8248; North East Units Scale Factor Converg.

AJ8248;SPC FL E - 299,908.000 262,101.473 MT 0.99998877 +0 17 04.4

AJ8248;UTM 17 - 2,990,937.655 562,080.284 MT 0.99964758 +0 17 04.4

AJ8248

AJ8248! - Elev Factor x Scale Factor = Combined Factor

AJ8248!SPC FL E - 1.00000302 x 0.99998877 = 0.99999179  
 AJ8248!UTM 17 - 1.00000302 x 0.99964758 = 0.99965060

AJ8248

AJ8248 SUPERSEDED SURVEY CONTROL

AJ8248

AJ8248 NAVD 88 (12/12/02) 7.66 (m) 25.1 (f) LEVELING 3

AJ8248

AJ8248.Superseded values are not recommended for survey control.

AJ8248.NGS no longer adjusts projects to the NAD 27 or NGVD 29 datums.

AJ8248.[See file dsdata.txt](#) to determine how the superseded data were derived.

AJ8248

AJ8248\_U.S. NATIONAL GRID SPATIAL ADDRESS: 17RNK6208090938(NAD 83)

AJ8248\_MARKER: DD = SURVEY DISK

AJ8248\_SETTING: 7 = SET IN TOP OF CONCRETE MONUMENT

AJ8248\_STAMPING: N 522 2001 CERP

AJ8248\_MARK LOGO: USE

AJ8248\_PROJECTION: RECESSED 20 CENTIMETERS

AJ8248\_MAGNETIC: O = OTHER; SEE DESCRIPTION

AJ8248\_STABILITY: C = MAY HOLD, BUT OF TYPE COMMONLY SUBJECT TO

AJ8248+STABILITY: SURFACE MOTION

AJ8248\_SATELLITE: THE SITE LOCATION WAS REPORTED AS SUITABLE FOR

AJ8248+SATELLITE: SATELLITE OBSERVATIONS - April 24, 2002

AJ8248

AJ8248 HISTORY	- Date	Condition	Report By
AJ8248 HISTORY	- 20010904	MONUMENTED	FOST
AJ8248 HISTORY	- 20020424	GOOD	MAPTEC

AJ8248

AJ8248 STATION DESCRIPTION

AJ8248

AJ8248'DESCRIBED BY CHARLEY FOSTER AND ASSOCIATES 2001 (JB)

AJ8248'THE MONUMENT IS LOCATED 5.0 MILES (8.05 KM) EAST OF INDIANTOWN, FL.

AJ8248'AND 8.9 MILES (14.32 KM) WEST OF THE

AJ8248'I-95 AND STATE ROAD 76 INTERCHANGE SOUTHWEST OF STUART, FL., SECTION

AJ8248'31, TOWNSHIP 39 SOUTH,

AJ8248'RANGE 40 EAST.

AJ8248'

AJ8248'OWNERSHIP IS FLORIDA DEPARTMENT OF TRANSPORTATION.

AJ8248'

AJ8248'TO REACH MONUMENT FROM THE JUNCTION OF THE STATE ROAD 710 RAMP AND

AJ8248'STATE ROAD 76 IN

AJ8248'INDIANTOWN, GO EAST 5.0 MILES (8.05 KM) ALONG STATE ROAD 76 TO THE

AJ8248'MONUMENT LOCATION ON THE

AJ8248'NORTH (LEFT) SIDE OF THE ROAD IN THE RIGHT OF WAY. THE MONUMENT

AJ8248'LOCATION IS A CONCRETE POST SET

AJ8248'39.2 FEET (11.95 M) SOUTHWEST OF THE EAST GATE POST OF THE WESTERN

AJ8248'MOST ENTRANCE OF A NURSERY

AJ8248'AT 8775 SW KANNER ROAD (STATE ROAD 76).

AJ8248'

AJ8248'THE MONUMENT IS 48.6 FEET (14.81 M) NORTH OF THE CENTERLINE OF THE

AJ8248'ROAD, 37.0 FEET (11.28 M) SOUTH OF

AJ8248'A POWER POLE WITH GUY WIRE ON THE WEST SIDE OF ENTRANCE GATE AND 85.8

AJ8248'FEET (26.15 M) WEST OF THE

AJ8248'WEST END OF A DRIVEWAY CULVERT (8775 SW KANNER ROAD (STATE ROAD 76)).

AJ8248'NOTE A MAGNET WAS BURIED

AJ8248'NEARBY AT AN UNSPECIFIED POSITION.

AJ8248'

AJ8248

AJ8248 STATION RECOVERY (2002)

AJ8248

AJ8248'RECOVERY NOTE BY MAPTECH INCORPORATED 2002 (CDP)

AJ8248'THE MONUMENT IS LOCATED 5.0 MILES (8.05 KM) EAST OF INDIANTOWN, FL.  
AJ8248'AND 8.9 MILES (14.32 KM)  
AJ8248'WEST OF THE  
AJ8248'I-95 AND STATE ROAD 76 INTERCHANGE SOUTHWEST OF STUART, FL., SECTION  
AJ8248'31, TOWNSHIP 39  
AJ8248'SOUTH,  
AJ8248'RANGE 40 EAST.  
AJ8248'  
AJ8248'OWNERSHIP IS FLORIDA DEPARTMENT OF TRANSPORTATION.  
AJ8248'  
AJ8248'TO REACH MONUMENT FROM THE JUNCTION OF THE STATE ROAD 710 RAMP AND  
AJ8248'STATE ROAD 76 IN  
AJ8248'INDIANTOWN, GO EAST 5.0 MILES (8.05 KM) ALONG STATE ROAD 76 TO THE  
AJ8248'MONUMENT LOCATION ON  
AJ8248'THE  
AJ8248'NORTH (LEFT) SIDE OF THE ROAD IN THE RIGHT OF WAY. THE MONUMENT  
AJ8248'LOCATION IS A CONCRETE  
AJ8248'POST SET  
AJ8248'39.2 FEET (11.95 M) SOUTHWEST OF THE EAST GATE POST OF THE WESTERN  
AJ8248'MOST ENTRANCE OF A  
AJ8248'NURSERY  
AJ8248'AT 8775 SW KANNER ROAD (STATE ROAD 76).  
AJ8248'  
AJ8248'THE MONUMENT IS 48.6 FEET (14.81 M) NORTH OF THE CENTERLINE OF THE  
AJ8248'ROAD, 37.0 FEET (11.28 M)  
AJ8248'SOUTH OF  
AJ8248'A POWER POLE WITH GUY WIRE ON THE WEST SIDE OF ENTRANCE GATE AND 85.8  
AJ8248'FEET (26.15 M)  
AJ8248'WEST OF THE  
AJ8248'WEST END OF A DRIVEWAY CULVERT (8775 SW KANNER ROAD (STATE ROAD 76)).  
AJ8248'NOTE A MAGNET WAS  
AJ8248'BURIED  
AJ8248'NEARBY AT AN UNSPECIFIED POSITION.  
AJ8248'  
AJ8248'STATION RECOVERY (2002)  
AJ8248'RECOVERY NOTE BY MAPTECH, INCORPORATED 2002 (CDP)  
AJ8248'RECOVERED AS DESCRIBED.  
AJ8248'  
AJ8248'

\*\*\* retrieval complete.  
Elapsed Time = 00:00:00

From the "ngvd29.txt" file provided by NGS for the CERP Geodetic Vertical Control Project.  
 Line/Part: L26243 SSN+: mark floated, SSN\*: mark constrained, SSN#: mark floated & constrained

Mark ID	SSN	PID	Designation	Geopotential	Elevation	Codes
1759	2919	AJ8247	M 522	7.8358	7.9957	
1760	2920	AJ8248	N 522	7.9196	8.0812	

## The NGS Data Sheet

See file [dsdata.txt](#) for more information about the datasheet.

DATABASE = Sybase ,PROGRAM = datasheet, VERSION = 7.27

1 National Geodetic Survey, Retrieval Date = SEPTEMBER 20, 2005

AJ8247 \*\*\*\*\*

AJ8247 DESIGNATION - M 522

AJ8247 PID - AJ8247

AJ8247 STATE/COUNTY- FL/MARTIN

AJ8247 USGS QUAD - INDIANTOWN (1983)

AJ8247

AJ8247 \*CURRENT SURVEY CONTROL

AJ8247

AJ8247\* NAD 83(1999)- 27 02 11.05808(N) 080 23 21.06516(W) ADJUSTED

AJ8247\* NAVD 88 - 7.579 (meters) 24.87 (feet) ADJUSTED

AJ8247

AJ8247 X - 949,144.517 (meters) COMP

AJ8247 Y - -5,605,244.599 (meters) COMP

AJ8247 Z - 2,881,800.400 (meters) COMP

AJ8247 LAPLACE CORR- -1.73 (seconds) DEFLEC99

AJ8247 ELLIP HEIGHT- -19.25 (meters) (12/12/02) GPS OBS

AJ8247 GEOID HEIGHT- -26.84 (meters) GEOID03

AJ8247 DYNAMIC HT - 7.568 (meters) 24.83 (feet) COMP

AJ8247 MODELED GRAV- 979,097.1 (mgal) NAVD 88

AJ8247

AJ8247 HORZ ORDER - FIRST

AJ8247 VERT ORDER - FIRST CLASS II

AJ8247 ELLP ORDER - THIRD CLASS I

AJ8247

AJ8247.The horizontal coordinates were established by GPS observations

AJ8247.and adjusted by the National Geodetic Survey in December 2002.

AJ8247

AJ8247.The orthometric height was determined by differential leveling

AJ8247.and adjusted by the National Geodetic Survey in April 2002.

AJ8247

AJ8247.The X, Y, and Z were computed from the position and the ellipsoidal ht.

AJ8247

AJ8247.The Laplace correction was computed from DEFLEC99 derived deflections.

AJ8247

AJ8247.The ellipsoidal height was determined by GPS observations

AJ8247.and is referenced to NAD 83.

AJ8247

AJ8247.The geoid height was determined by GEOID03.

AJ8247

AJ8247.The dynamic height is computed by dividing the NAVD 88

AJ8247.geopotential number by the normal gravity value computed on the

AJ8247.Geodetic Reference System of 1980 (GRS 80) ellipsoid at 45

AJ8247.degrees latitude (g = 980.6199 gals.).

AJ8247

AJ8247.The modeled gravity was interpolated from observed gravity values.

AJ8247

AJ8247; North East Units Scale Factor Converg.

AJ8247;SPC FL E - 299,584.474 260,603.977 MT 0.99998650 +0 16 39.6

AJ8247;UTM 17 - 2,990,614.238 560,583.299 MT 0.99964531 +0 16 39.6

AJ8247

AJ8247! - Elev Factor x Scale Factor = Combined Factor

AJ8247!SPC FL E - 1.00000302 x 0.99998650 = 0.99998952  
 AJ8247!UTM 17 - 1.00000302 x 0.99964531 = 0.99964833

AJ8247

AJ8247 SUPERSEDED SURVEY CONTROL

AJ8247

AJ8247 NAVD 88 (12/12/02) 7.58 (m) 24.9 (f) LEVELING 3

AJ8247

AJ8247.Superseded values are not recommended for survey control.

AJ8247.NGS no longer adjusts projects to the NAD 27 or NGVD 29 datums.

AJ8247.[See file dsdata.txt](#) to determine how the superseded data were derived.

AJ8247

AJ8247\_U.S. NATIONAL GRID SPATIAL ADDRESS: 17RNK6058390614(NAD 83)

AJ8247\_MARKER: F = FLANGE-ENCASED ROD

AJ8247\_SETTING: 49 = STAINLESS STEEL ROD W/O SLEEVE (10 FT.+)

AJ8247\_STAMPING: M 522 2001 CERP

AJ8247\_MARK LOGO: NONE

AJ8247\_PROJECTION: RECESSED 8 CENTIMETERS

AJ8247\_MAGNETIC: O = OTHER; SEE DESCRIPTION

AJ8247\_STABILITY: B = PROBABLY HOLD POSITION/ELEVATION WELL

AJ8247\_SATELLITE: THE SITE LOCATION WAS REPORTED AS SUITABLE FOR

AJ8247+SATELLITE: SATELLITE OBSERVATIONS - April 24, 2002

AJ8247\_ROD/PIPE-DEPTH: 24.4 meters

AJ8247

AJ8247 HISTORY - Date Condition Report By

AJ8247 HISTORY - 20010903 MONUMENTED FOST

AJ8247 HISTORY - 20020424 GOOD MAPTEC

AJ8247

AJ8247 STATION DESCRIPTION

AJ8247

AJ8247'DESCRIBED BY CHARLEY FOSTER AND ASSOCIATES 2001 (JB)

AJ8247'THE MONUMENT IS LOCATED 4.05 MILES (6.52 KM) EAST OF INDIANTOWN, FL.

AJ8247'AND 9.85 MILES (15.85 KM) WEST OF

AJ8247'THE I-95 AND STATE ROAD 76 INTERCHANGE SOUTHWEST OF STUART, FL.,

AJ8247'SECTION 36, TOWNSHIP 39 SOUTH,

AJ8247'RANGE 39 EAST.

AJ8247'

AJ8247'OWNERSHIP IS FLORIDA DEPARTMENT OF TRANSPORTATION.

AJ8247'

AJ8247'TO REACH MONUMENT FROM THE JUNCTION OF THE STATE ROAD 710 RAMP AND

AJ8247'STATE ROAD 76 IN

AJ8247'INDIANTOWN, GO EAST 4.05 MILES (6.52 KM) ALONG STATE ROAD 76 TO THE

AJ8247'MONUMENT LOCATION ON THE

AJ8247'SOUTH (RIGHT) SIDE OF THE ROAD IN THE RIGHT OF WAY. THE MONUMENT

AJ8247'LOCATION IS 0.2 MILES (0.32 KM)

AJ8247'WEST OF THE ENTRANCE TO PAYSON PARK THOROBRED TRAINING CENTER.

AJ8247'

AJ8247'THE MONUMENT IS 120.0 FEET (35.58 M) SOUTH OF THE CENTERLINE OF THE

AJ8247'ROAD, 4.0 FEET (1.22 M) NORTH OF A

AJ8247'WOODEN FENCE, 142.5 FEET (43.43 M) EAST OF POWER POLE NO. 279, 101.7

AJ8247'FEET (31.00 M) EAST OF THE EASTERN

AJ8247'MOST OF TWO PALM TREES IN THE FENCELINE AND 73.6 FEET (22.43 M) SOUTH

AJ8247'OF TELEPHONE PEDESTAL

AJ8247'SL1A11. ACCESS TO THE DATUM POINT (TOP OF A STAINLESS STEEL ROD) IS

AJ8247'HAD THROUGH A 5 INCH LOGO CAP.

AJ8247'NOTE A MAGNET WAS PLACED INSIDE THE PVC PIPE.

AJ8247'

AJ8247

AJ8247 STATION RECOVERY (2002)

AJ8247

AJ8247'RECOVERY NOTE BY MAPTECH INCORPORATED 2002 (CDP)

AJ8247'THE MONUMENT IS LOCATED 4.05 MILES (6.52 KM) EAST OF INDIANTOWN, FL.  
AJ8247'AND 9.85 MILES (15.85 KM)  
AJ8247'WEST OF  
AJ8247'THE I-95 AND STATE ROAD 76 INTERCHANGE SOUTHWEST OF STUART, FL.,  
AJ8247'SECTION 36, TOWNSHIP 39  
AJ8247'SOUTH,  
AJ8247'RANGE 39 EAST.  
AJ8247'  
AJ8247'OWNERSHIP IS FLORIDA DEPARTMENT OF TRANSPORTATION.  
AJ8247'  
AJ8247'TO REACH MONUMENT FROM THE JUNCTION OF THE STATE ROAD 710 RAMP AND  
AJ8247'STATE ROAD 76 IN  
AJ8247'INDIANTOWN, GO EAST 4.05 MILES (6.52 KM) ALONG STATE ROAD 76 TO THE  
AJ8247'MONUMENT LOCATION ON  
AJ8247'THE  
AJ8247'SOUTH (RIGHT) SIDE OF THE ROAD IN THE RIGHT OF WAY. THE MONUMENT  
AJ8247'LOCATION IS 0.2 MILES (0.32  
AJ8247'KM)  
AJ8247'WEST OF THE ENTRANCE TO PAYSON PARK THOROBRED TRAINING CENTER.  
AJ8247'  
AJ8247'THE MONUMENT IS 120.0 FEET (35.58 M) SOUTH OF THE CENTERLINE OF THE  
AJ8247'ROAD, 4.0 FEET (1.22 M)  
AJ8247'NORTH OF A  
AJ8247'WOODEN FENCE, 142.5 FEET (43.43 M) EAST OF POWER POLE NO. 279, 101.7  
AJ8247'FEET (31.00 M) EAST OF THE  
AJ8247'EASTERN  
AJ8247'MOST OF TWO PALM TREES IN THE FENCELINE AND 73.6 FEET (22.43 M) SOUTH  
AJ8247'OF TELEPHONE  
AJ8247'PEDESTAL  
AJ8247'SL1A11. ACCESS TO THE DATUM POINT (TOP OF A STAINLESS STEEL ROD) IS  
AJ8247'HAD THROUGH A 5 INCH  
AJ8247'LOGO CAP.  
AJ8247'NOTE A MAGNET WAS PLACED INSIDE THE PVC PIPE.  
AJ8247'  
AJ8247'STATION RECOVERY (2002)  
AJ8247'RECOVERY NOTE BY MAPTECH, INCORPORATED 2002 (CDP)  
AJ8247'RECOVERED AS DESCRIBED.  
AJ8247'  
AJ8247'

\*\*\* retrieval complete.  
Elapsed Time = 00:00:00

LEVEL RUN

DATE	STA	BS	MEAN	HI	FS	MEAN	ELEV	BM ELEV. NAVD-88	NOTES
08/19/05	NGS BM	8.52							
(FB 2548,	AJ8248	7.14	7.14	32.27				25.13	
PG 40...)	N 522	5.76							
	TP#1				6.59				
					5.04	5.04	27.24		
					3.48				
		6.15							
	SHAKE	5.26	5.26	32.49					
		4.36							
					5.04				TOP OF PIPE
	WELL				4.67	4.67	27.83		WELL
	M 1081				4.30				M 1081
		4.62							
	SHAKE	4.25	4.25	32.08					
		3.88							
					5.73				
	TP#2				4.84	4.84	27.24		
					3.95				
		7.00							
	SHAKE	5.25	5.25	32.49					
		3.50							
					7.06				
	TP#3				5.30	5.30	27.19		
					3.53				
		7.37							
	SHAKE	5.30	5.30	32.49					
		3.23							
					7.76				
	TP#4				5.56	5.56	26.93		
					3.36				
		8.20							
	SHAKE	6.10	6.10	33.03					
		3.99							
					7.03				
	TP#5				4.83	4.83	28.20		
					2.62				



LEVEL RUN

DATE	STA	BS	MEAN	HI	FS	MEAN	ELEV	BM ELEV. NAVD-88	NOTES
		6.52							
	SHAKE	4.19	4.19	32.39					
		1.86							
					7.45				
	TP#6				5.21	5.21	27.18		
					2.97				
		7.46							
	SHAKE	4.72	4.72	31.90					
		1.98							
					7.00				
	TP#7				4.95	4.95	26.96		
					2.89				
		7.17							
	SHAKE	5.33	5.33	32.29					
		3.49							
					7.64				
	TP#8				5.37	5.37	26.92		
					3.10				
		6.62							
	SHAKE	4.80	4.80	31.72					
		2.98							
	NGS BM				8.05				ERROR
	AJ8247				6.81	6.81	24.91	24.87	-0.035
	M522				5.57				
		4.45							TOP OF PIPE
	WELL	4.05	4.05	31.88				27.83	WELL
	M 1081	3.66							M 1081
	BM				6.98				SET SFWMD
	DISC				6.73	6.73	25.15		DISC STAMPED
	M 1081				6.48				M 1081 2005
		6.90							
	SHAKE	6.57	6.57	31.72					
		6.24							
(FB 2548, PG 50...)	BM				5.11				ERROR
09/02/05	TP#1				4.48	4.48	27.24	27.24	0.000
					3.85				