

Identification\_Information:  
Citation:

**Mike J. Bartholomew**  
**Biscayne Engineering**

Citation\_Information:  
Originator: Mike J. Bartholomew  
Publication\_Date: Unpublished material  
Publication\_Time: Unknown  
Title: Martin County Tape Down Wells (M1230)  
Edition: 1.0  
Series\_Information:  
Publication\_Information:  
Larger\_Work\_Citation:  
Citation\_Information:  
Series\_Information:  
Publication\_Information:

Description:

**Purpose**

Abstract:  
SE County Line Road @ SE Wooden Bridge Road, Martin County, Florida  
Purpose:  
To establish elevations for well M1230 and provide the results in NAVD-88 format in accordance with the CERP height modernization program. A disc was not set at this location due to the proximity to existing benchmark

**Survey Date**

Supplemental\_Information: None  
Time\_Period\_of\_Content:  
Time\_Period\_Information:  
Single\_Date/Time:  
Range\_of\_Dates/Times:  
Beginning\_Date: 20050801  
Ending\_Date: 20050901  
Multiple\_Dates/Times:  
Currentness\_Reference: Date and Time Range of Field/Office Work

Status:

Progress: Complete  
Maintenance\_and\_Update\_Frequency: Unknown

Spatial\_Domain:

Bounding\_Coordinates:  
West\_Bounding\_Coordinate: -080°07' 16"  
East\_Bounding\_Coordinate: -080°07' 16"  
North\_Bounding\_Coordinate: +26°59' 08"  
South\_Bounding\_Coordinate: +26°59' 08"

Keywords:

Theme:  
Theme\_Keyword\_Thesaurus: None  
Theme\_Keyword: Well Site  
Theme\_Keyword: MARTIN  
Theme\_Keyword: M1230  
Place:  
Place\_Keyword\_Thesaurus: None  
Place\_Keyword: Well Site  
Place\_Keyword: Martin County, Florida  
Place\_Keyword: Tequesta  
Place\_Keyword: Sec. 14, Twp. 40S, Rge 42E

Stratum:  
Temporal:

Access\_Constraints: None

Use\_Constraints: None

Point\_of\_Contact:

**Elvie Ebanks**  
**SFWMD**

Contact\_Information:  
Contact\_Person\_Primary:  
Contact\_Person: Elvie Ebanks  
Contact\_Organization: South Florida Water Management

District

Contact\_Organization\_Primary:  
Contact\_Position: Project Manager  
Contact\_Address:  
Address\_Type: mailing and physical address  
Address: 3301 Gun Club Road  
City: West Palm Beach

M1230.gen

State\_or\_Province: FI

Postal\_Code: 33406

Country: USA

Contact\_Voice\_Telephone: (561) 753-2400 x4717

Contact\_Facsimile\_Telephone: (561) 791-4093

Security\_Information:

Cross\_Reference:

Citation\_Information:

Series\_Information:

Publication\_Information:

Data\_Quality\_Information:

Attribute\_Accuracy:

Attribute\_Accuracy\_Report:

## Equipment Used

This Survey was prepared using GPS and Leveling instruments. The horizontal location of the well was established using GPS.

The vertical data was collected using Level Wild NA-2.

Coordinates are based on the Florida State Plane Coordinate System, East Zone, NAD 83/90. Elevations based on NAVD88

Logical\_Consistency\_Report:

## Horizontal

Horizontal data was established using NGS control points AJ5244 (GCY D01) and AJ5245 (GCY D02).

Vertical data was established using NGS benchmark AJ5644 (B 516).

Coordinates are based on the Florida State Plane Coordinate System, East Zone, NAD 83/90.

Elevations are based on NAVD88.

Completeness\_Report:

## Project Results

Horizontal location taken at approximate center of well.

Lat. +26°59'08.157"

Long. -080°07'16.299"

N 964932.722

E 942366.202

New leveled elevations.

A site benchmark was not set at this location. BM AJ5644 serves as site BM

Disc elevation is 7.72' (NAVD88)

Top of pipe elevation is 7.44' (NAVD88)

based on NGS NAVD88 adjustment of vertical network.

Origin of NAVD88 elevation for well "M1230" is closed bench level circuit through NGS benchmark AJ5644 (B 516).

Well is situated approximately 1.75 miles West of U.S. 1 and North of County Line Road in Section 14-T40S-R42E, Martin County, Florida

TO REACH the well from the intersection of US-1 and County Line Road in Tequesta, Florida, travel West on County Line Road for 1.3 miles to a 90 degree bend in the road where County Line Road turns to the right (North).

Turn right and proceed North on County Line Road for 0.9 miles to a 90 degree bend in the road where County Line Road turns to the left (West). Turn left and proceed West

on S.E. County Line Road for 0.7 miles to the end of County Line Road at the intersection with S.E. Wooden Bridge Lane on the left and Well M1230 on the right. Well M1230

is situated 70.7 feet (more or less) North of the North back of sidewalk of S.E. County Line Road, along the Northerly prolongation (more or less) of the West edge of pavement of S.E. Wooden Bridge Lane, in the woods beyond a 3 foot high hog wire fence.

Well M1230 is approximately 5.7 feet North of and 1' East of Well M1233. Well (pipe) protrudes 2" (more or less) above the ground.

Positional\_Accuracy:

Horizontal\_Positional\_Accuracy:

## Horizontal

Horizontal\_Positional\_Accuracy\_Report:

The horizontal position of the well "M1230" was established using differential GPS. NGS points AJ5244 (GCY D01) and AJ5245 (GCY D02) were used as a source

M1230.gen  
of horizontal control.  
Quantitative\_Horizontal\_Positional\_Accuracy\_Assessment:  
Horizontal\_Positional\_Accuracy\_Value: 1 meter  
Horizontal\_Positional\_Accuracy\_Explanation: The intended  
horizontal positional accuracy for this survey is 1 meter  
Vertical\_Positional\_Accuracy:

**Level Line**

Vertical\_Positional\_Accuracy\_Report:  
A level line was run originating on NGS control point  
AJ5644 (B 516) with NAVD-88 elevation,  
running through well "M1230" and terminated on  
point AJ5644 (B 516) in accordance with Florida  
Minimum Technical Standards.  
Quantitative\_Vertical\_Positional\_Accuracy\_Assessment:  
Vertical\_Positional\_Accuracy\_Value: 0.01 feet  
Vertical\_Positional\_Accuracy\_Explanation: A bench level  
circuit was performed through AJ5644 (B 516) (onsite) and well "M1230" in accordance with  
Florida Minimum Technical Standards (Chapter 61g17-6, FAC). Length of benchmark run is 85  
feet. Allowable error is 0.01 feet. Achieved Accuracy is 0.00 feet.

Lineage:

Source\_Information:  
Source\_Citation:  
Citation\_Information:  
Series\_Information:  
Publication\_Information:  
Larger\_Work\_Citation:  
Citation\_Information:  
Series\_Information:  
Publication\_Information:  
Source\_Time\_Period\_of\_Content:  
Time\_Period\_Information:  
Single\_Date/Time:  
Range\_of\_Dates/Times:  
Multiple\_Dates/Times:

Process\_Step:

Process\_Description:  
The horizontal work was performed using Ashtech GPS  
receivers. The vertical work was performed using level

Wild

N-A2  
Process\_Date: 20050823  
Process\_Time: 09000000  
Process\_Contact:  
Contact\_Information:  
Contact\_Person\_Primary:  
Contact\_Organization\_Primary:  
Contact\_Address:

Spatial\_Data\_Organization\_Information:

Spatial\_Reference\_Information:  
Horizontal\_Coordinate\_System\_Definition:  
Geographic:  
Planar:

Map\_Projection:

Albers\_Conical\_Equal\_Area:  
Azimuthal\_Equidistant:  
Equidistant\_Conic:  
Equiangular:  
General\_Vertical\_Near-sidereal\_Perspective:  
Gnomonic:  
Lambert\_Azimuthal\_Equal\_Area:  
Lambert\_Conformal\_Conic:  
Mercator:  
Modified\_Stereographic\_for\_Alaska:  
Miller\_Cylindrical:  
Oblique\_Mercator:  
Oblique\_Line\_Point:  
Orthographic:  
Polar\_Stereographic:  
Polyconic:  
Robinson:  
Sinusoidal:

M1230.gen  
 van\_der\_Grinten:  
 Space\_Obl i que\_Mercator\_(Landsat):  
 Stereographi c:  
 Transverse\_Mercator:  
 van\_der\_Grinten:  
 Gri d\_Coordi nate\_System:  
 Uni versal \_Transverse\_Mercator:  
 Transverse\_Mercator:  
 Uni versal \_Pol ar\_Stereographi c:  
 Pol ar\_Stereographi c:  
 State\_PI ane\_Coordi nate\_System:  
 Lambert\_Conformal \_Coni c:  
 Transverse\_Mercator:  
 Obl i que\_Mercator:  
 Obl i que\_Li ne\_Poi nt:  
 Pol yconi c:  
 ARC\_Coordi nate\_System:  
 Equi rectangul ar:  
 Azi muthal \_Equi di stant:  
 Local \_PI anar:  
 PI anar\_Coordi nate\_I nformati on:  
 Coordi nate\_Representati on:  
 Di stance\_and\_Beari ng\_Representati on:  
 Local :  
 Geodeti c\_Model :  
 Verti cal \_Coordi nate\_System\_Defi ni ti on:  
 Al ti tude\_System\_Defi ni ti on:  
 Depth\_System\_Defi ni ti on:  
 Enti ty\_and\_Attri bute\_I nformati on:  
 Detai led\_Descri pti on:  
 Enti ty\_Type:  
 Attri bute:  
 Attri bute\_Domai n\_Val ues:  
 Attri bute\_Val ue\_Accuracy\_I nformati on:  
 Overvi ew\_Descri pti on:  
 Di stri buti on\_I nformati on:  
 Di stri butor:  
 Contact\_I nformati on:  
 Contact\_Person\_Pri mary:  
 Contact\_Organi zati on\_Pri mary:  
 Contact\_Address:  
 Standard\_Order\_Process:  
 Di gi tal \_Form:  
 Di gi tal \_Transfer\_I nformati on:  
 Di gi tal \_Transfer\_Opti on:  
 Onl i ne\_Opti on:  
 Computer\_Contact\_I nformati on:  
 Network\_Address:  
 Di al up\_I nstructi ons:  
 OffLi ne\_Opti on:  
 Recordi ng\_Capaci ty:  
 Avai l abl e\_Ti me\_Period:  
 Ti me\_Period\_I nformati on:  
 Si ngl e\_Date/Ti me:  
 Range\_of\_Dates/Ti mes:  
 Mul ti pl e\_Dates/Ti mes:  
 Metadata\_Reference\_I nformati on:  
 Metadata\_Date: 20050823  
 Metadata\_Contact:  
 Contact\_I nformati on:  
 Contact\_Person\_Pri mary:  
 Contact\_Person: Mi ke J. Barthol omew  
 Contact\_Organi zati on: Bi scayne Engi neeri ng Company, I nc.  
 Contact\_Organi zati on\_Pri mary:  
 Contact\_Posi ti on: Project Surveyor  
 Contact\_Address:  
 Address\_Type: mai l i ng and physi cal address  
 Address: 529 W. Fl agler Street  
 Ci ty: Mi ami  
 State\_or\_Provi nce: Fl

M1230.gen  
Postal\_Code: 33130  
Country: USA  
Contact\_Voice\_Telephone: (305) 324-7671  
Contact\_Facsimile\_Telephone: (305) 324-0809  
Contact\_Electronic\_Mail\_Address: mi keb@bi scayneengi neeri ng. com  
Hours\_of\_Service: 8:00 AM to 5:00 PM EST  
Metadata\_Standard\_Name: FGDC Content Standards for Digital Geospatial Metadata  
Metadata\_Standard\_Version: 1.0  
Metadata\_Time\_Convention: Local time  
Metadata\_Security\_Information:

# M-1230



**Biscayne Engineering Company, Inc.  
Date of Photo: 09-12-05  
View: Looking West from County Line Road**

# M-1230



**Biscayne Engineering Company, Inc.**  
**Date of Photo: 09-12-05**  
**View: Looking North from County Line Road**

# M-1230



**Biscayne Engineering Company, Inc.**  
**Date of Photo: 09-12-05**  
**View: Well M-1230**



A. REDERO  
T. LOPEZ  
N. CEPEDA

#03-77478  
S.F.W.M.D  
"SITE-A"

8/3/05

( ESTABLISH  
ELEV. ON WELL  
M1039 )

STA	BS	MEAN	HI	FS	MEAN
BM	9.370 7.410 5.450	7.410	22.440 ✓		
TP#1				1.330 0.720 0.110	0.720
SHAKE	8.170 6.690 5.210	6.690	28.410 ✓		
TP#2				10.790 9.350 7.710	9.350
SHAKE	3.810 2.260 0.710	2.260	21.320 ✓		
TP#3				8.920 7.400 5.850	7.400

ELEV	BM ELEV	DESC.
	15.03 ✓	NGS # AD 6243 FND DISC STAMPED MAR 10 FLDNR. 78.2' FT W. OF US 1 S.E. LANE 450' FT N. OF COUNTY LINE NAVD 88
21.720 ✓		SET CUT NL
		SET CUT NL
19.060 ✓		SET CUT NL
		SET CUT NL
13.920 ✓		SET CUT NL

SAME  
CREW

#03-77478  
S.F.W.M.D  
"SITE-A"

8/3/05

(ELEV. CONT.)

STA	BS	MEAN	HI	FS	MEAN	ELEV.	BM ELEV	DESC
SHAKE	5.540 4.685 3.830	4.685	18.605 ✓					SET CUT NL
TP#4				1.960 1.215 0.470	1.215	17.39 ✓		SET 80 D SPIKE
SHAKE	7.270 6.540 5.810	6.540	23.93 ✓					SET 80 D SPIKE
TP#5				5.500 4.060 2.620	4.060	19.87 ✓		SET 80 D SPIKE
SHAKE	5.585 4.640 3.695	4.64	24.51 ✓					SET 80 D SPIKE
TP#6				3.750 2.755 1.760	2.755	21.755 ✓		SET MAG NL IN TREE STUMP

SAME  
CREW

#03-77476  
S.F.W.M.D.  
"SITE-A"

3/3/05

(ELEV. CONT.)

STA	BS	MEAN	HI	FS	MEAN	ELEV	BM ELEV.	DESC.
SHAKE	3.470 2.980 2.490	2.980	24.735					SET MAG NL IN TREE TRUNK
M1039				2.770 2.050 2.220	2.050	22.685		TOP OF PIPE WELL = M1039
SHAKE	2.350 1.630 0.910	1.630	24.315					TOP OF PIPE WELL = M1039
TP # 7				3.070 2.555 2.365	2.555	21.760		MAG NL IN TREE TRUNK
SHAKE	3.640 2.650 1.660	2.650	24.410					MAG NL IN TREE TRUNK
TP # 8				5.480 4.530 2.590	4.530	19.880		SET 80 D SPIKE

SAME  
CREW

#03-77478  
S. F. W. M. D

8/3/05

"SITE - A"

(ELEV. CONT)

STA	BS	MEAN	HI	FS	MEAN	ELEV	BM ELEV	DESC
SHAKE	5.510 4.070 2.630	4.070	23.750	✓				SET 80 D SPIKE
TP# 9				7.280 6.550 5.820	6.550	17.400	✓	SET 80 D SPIKE
SHAKE	2.340 1.650 0.960	1.650	19.050	✓				SET 80 D SPIKE
TP# 10				6.010 5.120 4.730	5.120	13.930	✓	SET CUT NL
SHAKE	7.130 5.710 4.290	5.710	19.640	✓				SET CUT NL
TP # 11				6.060 6.420 4.780	6.420	13.220	✓	SET CUT NL

2548/03

SAME  
CREW

#03-77478  
S.F.W.M.D.

2548 / 04

8/3/05

"SITE-A"

(ELEV. CONT)

STA	BS	MEAN	HI	FS	MEAN	ELEV	BM ELEV	DESC
SHAKE	5.950 4.495 3.040	4.495	17.715 ✓					SET CUT NL
TP#12				6.000 4.780 3.560	4.780	12.935 ✓		SET CUT NL
SHAKE	7.160 5.920 4.680	5.920	18.855 ✓					SET CUT NL
TP#13				11.750 10.050 8.350	10.050	8.805 ✓		SET CUT NL
SHAKE	6.590 5.290 3.990	5.290	14.095 ✓					SET CUT NL
TP#14				7.790 5.845 3.900	5.845	8.250 ✓		SET CUT NL

SAME  
CREIN

#03-77478  
S.F.W.M.D

8/3/05

"SITE-A"

(ELEV. CONT)

STA	BS	MEAN	HI	FS	MEAN	ELEV	EM ELEV	DESC
SHAKE	6.870 5.360 3.850	5.360	13.610	✓				SET CUT NL
TP#15				5.380 3.430 1.480	3.430	10.180	✓	SET CUT NL
SHAKE	4.330 2.820 1.310	2.820	13.000	✓				SET CUT NL
TP#16				7.460 5.660 3.860	5.660	7.340	✓	SET CUT NL
SHAKE	6.290 4.790 3.290	4.790	12.130	✓				SET CUT NL
TP#17				5.150 3.305 1.460	3.305	8.825	✓	SET CUT NL

SAME  
CREW

#03-77478  
S.F.V.M.D.

"SITE-A"

8/3/05

(ELEV. CONT.)

STA	BS	MEAN	HI	FS	MEAN	ELEV	BM ELEV	DESC
SHAKE	9.600 8.100 6.600	8.100	16.925	✓				SET CUT NL
TP # 18				12.750 10.560 8.370	10.560	6.365	✓	SET CUT NL
SHAKE	7.550 5.310 3.070	5.310	11.675	✓				SET CUT NL
TP # 19				7.750 5.825 3.900	5.825	5.850	✓	SET CUT NL
SHAKE	7.870 6.355 4.840	6.355	12.205	✓				SET CUT NL
TP # 20				5.870 3.870 1.850	3.870	8.335	✓	SET CUT NL

SAME  
CREW

# 03-77478  
S.F.W.M.D

8/3/05

"SITE-A"

(ELEV CONT)

STA	BS	MEAN	HI	FS	MEAN
SHAKE	7.320 6.385 5.450	6.385	17.720 ✓		

BM				6.040 5.460 4.880	5.460
----	--	--	--	-------------------------	-------

BM	3.605 3.425 3.245	3.425	26.110 ✓		
----	-------------------------	-------	----------	--	--

DISC M1039				3.970 3.740 3.560	3.74
---------------	--	--	--	-------------------------	------

SHAKE	3.320 3.140 2.960	3.140	25.510 ✓		
-------	-------------------------	-------	----------	--	--

BM				3.865 3.755 3.645	3.755
----	--	--	--	-------------------------	-------

2548/07

ELEV	BM ELEV	DESC
------	------------	------

SET CUT NL

NGS # A55245  
FND DISC STAMPED  
GCY DOZ 2001  
29.6' W OF W. EDGE OF PAV.  
COUNTY LINE RD. NEAR HEAD W.  
NAVD 88

22.685 WELL = M1039

22.310 ↓		SET S.F.W.M.D DISC STAMPED M1039 2005
----------	--	--

21.755 ↓	21.755	TP #6 MARY NL IN STUMP NO ERROR
----------	--------	------------------------------------



SAME  
CREW

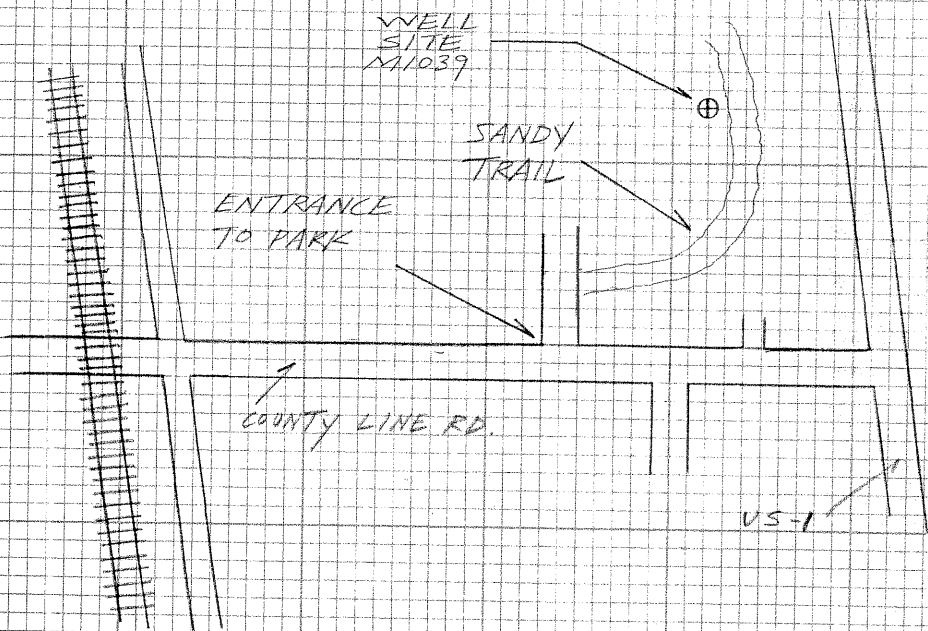
#03-77478  
S.F.W.M.D.

(SITE - A  
DESCRIPTION)

8/3/05

DIRECTIONS -

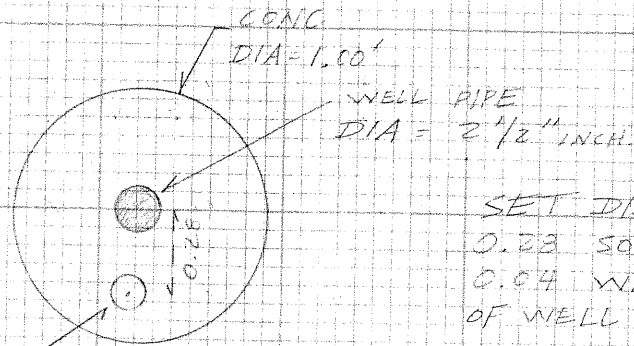
FROM THE INTERSECTION OF  
US-1 AND COUNTY LINE RD.  
TRAVEL WEST ON COUNTY  
LINE RD FOR 0.2 MILES  
TO THE ENTRANCE OF TERQUESTA  
PARK. TURN NORTH INTO  
PARK AND THEN EAST ONTO A  
SANDY TRAIL THAT CIRCLES  
AROUND FOR 0.2 MILES. THE  
WELL IS ON THE LEFT SIDE  
OF THE TRAIL.



2548/08

SKETCH OF WELL SITE = M11039

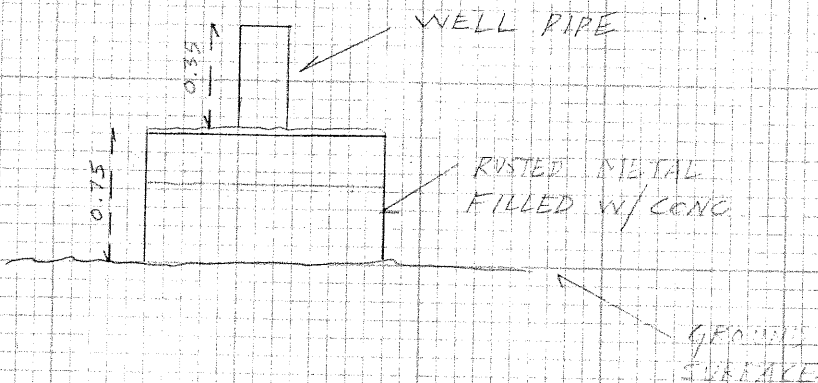
TOP VIEW



SET DISC  
0.28 SOUTH  
0.04 WEST  
OF WELL PIPE

SET  
S.F.W.M.D.  
DISC  
STAMPED  
M11039 2005

SIDE VIEW



SAME  
CREN

#03-77478  
S.F.W.M.D.

2548/09

3/3/05

"SITE - B"

(ESTABLISH  
ELEV ON WELL  
M1233)

STA	BS	MEAN HI	FS	MEAN
BM	4.675 4.530 4.385	4.530	12.250	
M1233			4.975 4.970 4.895	4.910
SHAKE	5.385 5.325 5.265	5.325	12.665	
BM			5.095 4.995 4.795	4.945

ELEV	BM ELEV	DESC
7.720		NGS # AJ 5644 END DISC STAMPED B SIG 2001 52.50' N. OF PROJ. & OF SE COUNTY LINE RD AND 4' W. OF PROJ. W. EDGE OF MAX. OF SE WOODEN BRIDGE LN.
7.340		TOP OF PIPE WELL = M1233
		TOP OF PIPE WELL = M1233
7.720	7.720	NGS # AJ 5644 END BRASS D. NAVD 88

SAME  
CREW

#03-77473  
S.F.W.M.D.

"SITE-B"

8/3/05

ESTABLISH  
ELEV. ON WELL  
M1230

STA	BS	MEAN	HI	FS	MEAN
BM	4.790 4.640 4.490	4.640	12.360		
M1230				5.010 4.925 4.640	4.925
SHAKE	5.300 5.215 5.130	5.215	12.650		
BM				5.080 4.930 4.780	4.930

2543/10

ELEV	BM ELEV	DESC
7.720		NGS # AJ5644 FND DISC. STAMPED 3 516 2001 52.50' N. OF PROJ. C. OF SE COUNTY LINE RD. 4' W. OF PROJ. W. EDGE OF PAV. SE. WOOLEN BRIDGE LN TOP OF PIPE WELL = M1230 NAVD 88
7.435		
7.720	7.720	TOP OF PIPE WELL = M1230
7.720	7.720	NGS # AJ 5644 FND BRASS D. NAVD 88

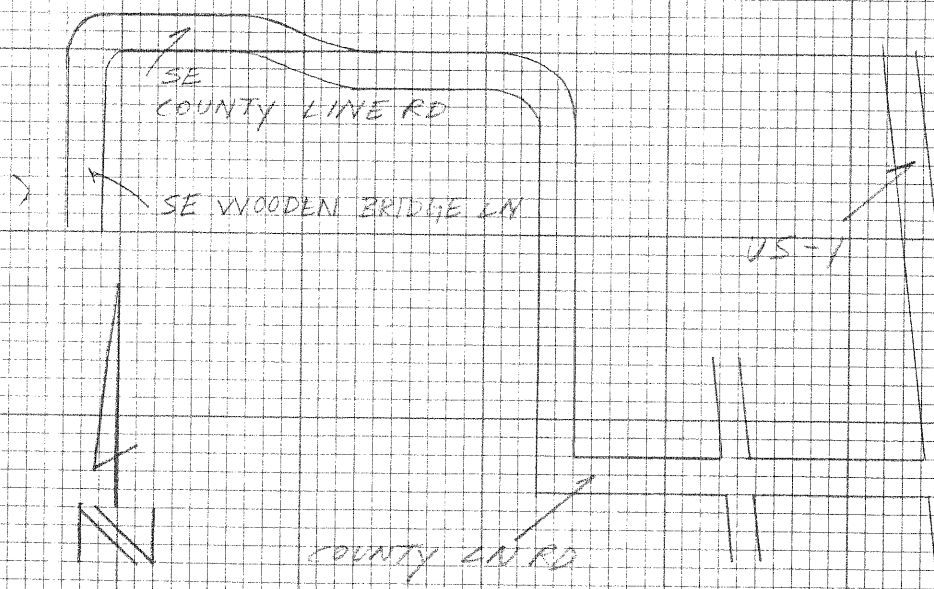
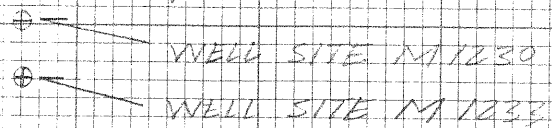
SAME  
CREW

#03-478  
S.F.W.M.D.

SITE - B  
DESCRIPTION

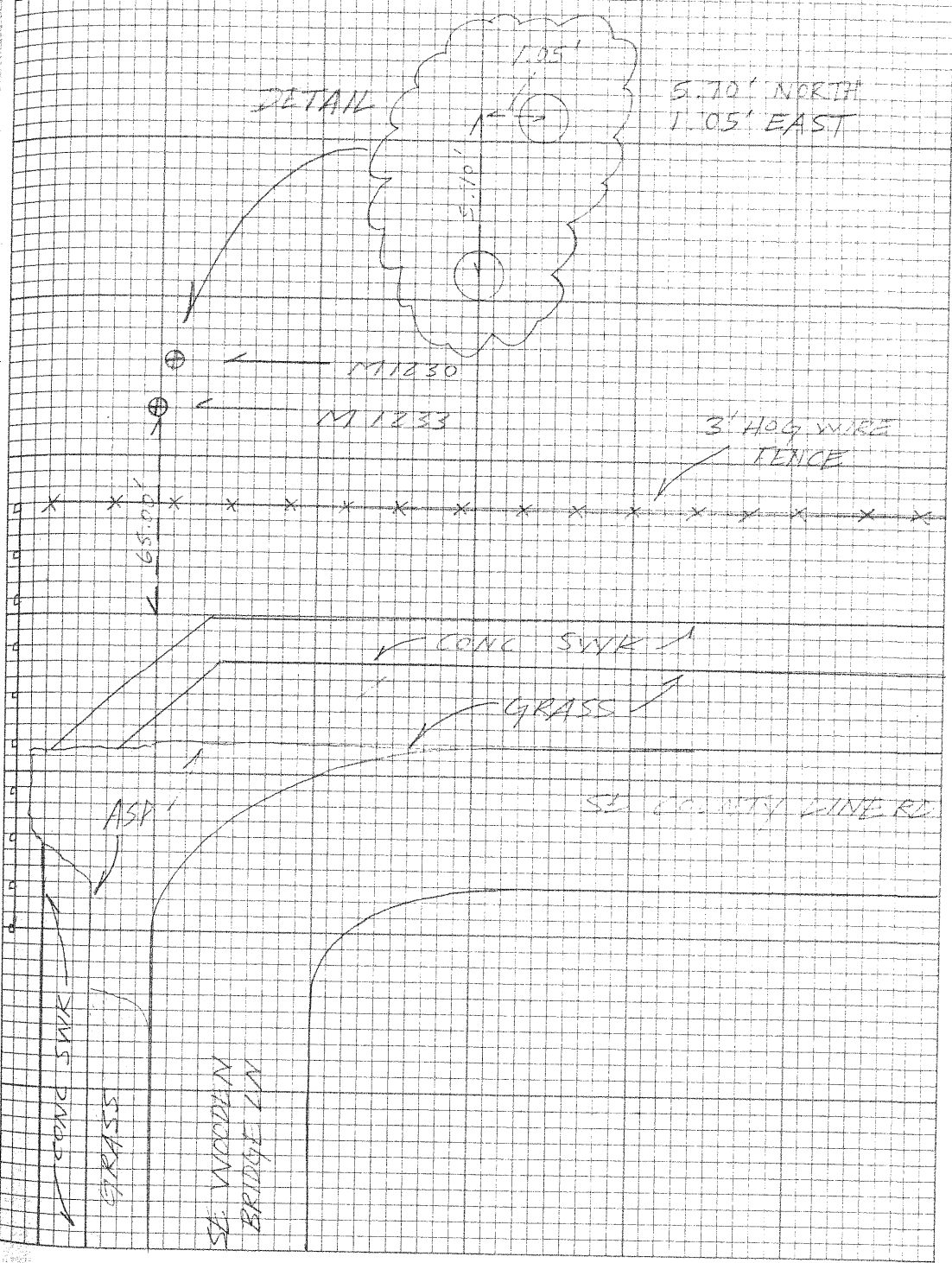
8/3/05

DIRECTIONS - FROM THE INTERSECTION OF US  
AND COUNTY LN RD. TRAVEL WEST  
ON COUNTY LN RD. FOR 1.3 MILE  
CONTINUE NORTH FOR 0.9 MILE  
AND CONTINUE WEST AGAIN FOR  
0.7 MILES ON SE. COUNTY LN RD WHERE  
IT TURNS SOUTH AND BECOMES  
SE WOODEN BRIDGE LN PARK ON SIDE  
OF RD. AND WALK NORTH INTO WOODS  
THE WELLS ARE 96' NORTH OF  
PROJECTED  $\phi$  OF SE COUNTY LN RD  
AND ARE ON LINE WITH THE WEST  
EDGE OF PAY. OF SE WOOD BRIDGE LN.



2548/11

DETAIL



A. REPERO  
T. LOPEZ  
N. CEPEDA

#03-17478  
S.F.W.M.D  
"SITE - C"

8/4/05

( ESTABLISH  
ELEV. ON WELLS  
M1229, M1232 )

STA	BS	MEAN	HI	FS	MEAN	ELEV	BM ELEV	DESC
BM	5.860 5.050 4.240	5.050	14.310	✓			9.260	NGS # AJ 5647 FND DISC STAMPED E. 516 2001 AT THE INTERSECTION OF PINE TREE ST AT MARTIN COUNTY & WEST PALM LINE. 13 FT NORTH OF WOOD POWER POLE SET CUT NL NAVD 88
TP#1				6.920 5.245 3.570	5.245	9.065	✓	SET CUT NL
SHAKE	6.245 4.755 3.265	4.755	13.820	✓				SET CUT NL
TP#2				5.650 3.860 2.070	3.860	9.960	✓	SET CUT NL
SHAKE	7.000 5.270 3.540	5.270	15.230	✓				SET CUT NL
TP#3				8.720 7.010 5.300	7.010	8.220	✓	SET CUT NL

SAME  
CREW

#03-77978  
S.F.W.M.D.  
" SITE - C "

8/4/05

(ELEV CONT)

STA	ES	MEAN	HI	FS	MEAN	ELEV	BM ELEV	DESC
SHAKE	7.020 5.705 4.390	5.705	13.975	✓				SET CUT NL
TP# 4				6.565 5.065 3.565	5.065	8.860 ✓		SET CUT NL
SHAKE	6.900 4.930 2.960	4.930	13.770	✓				SET CUT NL
TP# 5				7.100 5.395 3.690	5.395	8.395 ✓		SET CUT NL
SHAKE	7.000 5.250 3.500	5.250	13.645	✓				SET CUT NL
TP# 6				5.705 5.705 1.705	3.705	9.940 ✓		SET CUT NL

SAME  
CREW.

#03-77478  
S.F.W.M.D.

2548 / 14

8/4/05

" SITE-C "

(ELEV. CONT.)

STA	BS	MEAN	HI	FS	MEAN	ELEV	BM ELEV	DESC
SHAKE	6.610 4.555 2.500	4.555	14.495	✓				SET CUT NL
TP # 7				7.770 5.535 3.280	5.525	8.970	✓	SET CUT NL
SHAKE	7.280 5.175 3.070	5.175	14.145	✓				SET CUT NL
TP # 8				11.880 7.550 7.120	7.550	4.595	✓	SET CUT NL
SHAKE	7.1500 5.195 3.240	5.195	9.790	✓				SET CUT NL
TP # 9				3.980 2.180 0.380	2.180	7.610	✓	SET CUT NL

SAME  
CREW

#03 - 77478  
S.F.V.V.M.D

8/4/05

"SITE-C"

(ELEV. CONT)

STA	BS	MEAN	HI	FS	MEAN	ELEV	ZM ELEV	DESC
SHAKE	7.570 6.490 5.410	6.49	14.100					SET CUT NL
TP#10				6.490 5.150 3.870	5.180	8.920		SET CUT NL
SHAKE	5.740 4.705 3.670	4.705	13.625					SET CUT NL
TP #11				5.900 5.008 4.100	5.000	8.625		SET MAG NL & W
SHAKE	4.750 4.300 3.850	4.300	12.925					SET MAG NL & W
M 1232				5.190 4.740 4.290	4.740	8.185		TOP OF PIPE WELL = M1232



SAME  
OPEN #03-77478  
S.F.W.M.I.

"SITE-C"

8/4/05

(ELEV. CONT)

STA	BS	MEAN	HI	FS	MEAN	ELEV	BM ELEV	DESC
SHAKE	5.380 4.930 4.490	4.930	13.115 ✓					TOP OF PIPE WELL 1232
TR #11				5.270 4.350 4.430	4.850	8.265 ✓		TOP OF PIPE WELL 1229
SHAKE	4.890 4.450 4.020	4.450	12.715 ✓					TOP OF PIPE WELL 1229
TR #12				4.540 4.090 3.640	4.090	8.625 ✓		SET MAG NL & W
SHAKE	5.970 5.090 4.210	5.090	13.715 ✓					SET MAG NL & W
TR #13				5.850 4.800 3.750	4.800	8.915 ✓		SET CUT NL

SAME  
CREW

#03-77478  
S.F.W.M.D.  
"SITE - C"

8/4/05

(ELEV. CONT.)

STA	ZS	MEAN	HL	FS	MEAN	ELEV	BM ELEV	DESC
SHAKE	6.640 5.335 4.030	5.335	14.250					SET CUT NL
TP#14				7.730 6.645 5.560	6.645	7.605		SET CUT NL
SHAKE	4.150 2.475 0.800	2.475	10.080					SET CUT NL
TP#15				7.570 5.490 3.410	5.490	4.590		SET CUT NL
SHAKE	11.450 9.175 6.940	9.175	13.785					SET CUT NL
TP#16				7.500 4.820 2.670	4.820	8.965		SET CUT NL

SAME  
CREW

#03-77478  
S.F.V.M.D  
"SITE-C"

8/4/05

(ELEV. CONT)

1013/18

STA	BS	MEAN	HI	FS	MEAN	ELEV	BM ELEV	DESC
SHAKE	7.520 5.575 3.330	5.575	14.540					SET CUT NL
TP# 17				6.655 4.605 3.535	4.605	9.935 ✓		SET CUT NL
SHAKE	6.010 3.790 1.570	3.790	13.725 ✓					SET CUT NL
TP# 18				6.900 5.330 3.760	5.330	8.375 ✓		SET CUT NL
SHAKE	7.370 5.460 3.550	5.460	13.855 ✓					SET CUT NL
TP# 19				6.760 5.000 3.240	5.000	8.855 ✓		SET CUT NL

SAME  
CREW

#03-77473  
S.F.V.M.L.  
"SITE-C"

2/9/05

(ELEV. CONT)

STA	BS	MEAN	HI	FS	MEAN	ELEV	BM ELEV.	DESC
SHAKE	6.820 5.320 3.920	5.320	14.175					SET CUT NL
TP#20				7.280 5.780 4.640	5.960	8.215		SET CUT NL
SHAKE	7.780 6.340 4.900	6.340	14.555					SET CUT NL
TP#21				9.230 6.920 4.610	6.920	7.635		SET CUT NL
SHAKE	2.520 1.325 0.130	1.325	8.760					SET CUT NL
TP#22				7.290 5.475 3.700	5.475	3.465		SET CUT NL

2543/19

SAME  
CREW

#03-77478  
S.F.W.M.D.  
"SITE - C"

8/4/05

(ELEV. CONT.)

STA	BS	MEAN	HI	FS	MEAN	ELEV	BM ELEV	DESC
SHAKE	6.890 5.270 3.650	5.270	8.735	✓				SET CUT NL
TP# 23				6.690 5.160 3.640	5.760	3.575	✓	SET CUT NL
SHAKE	15.580 13.916 12.24	13.91	17.485	✓				SET CUT NL
TP# 24				10.200 7.700 5.200	7.700	9.785	✓	SET CUT NL
SHAKE	2.680 1.680 0.740	1.680	11.465	✓				SET CUT NL
TP# 25				5.840 4.490 3.140	4.490	6.975	✓	SET CUT NL

SAME  
CREW

#03-77478  
S.F.W.M.D

2549/21

8/4/05

"SITE - C"

(ELEV. CONT)

STA	BS	MEAN	HI	FS	MEAN	ELEV	BM ELEV	DESC
SHAKE	9.050 7.380 5.710	7.380	14.355					SET CUT NL
TP #26				7.380 6.190 5.000	6.190	8.165		SET CUT NL
SHAKE	5.910 5.690 5.570	5.690	13.855					SET CUT NL
BM				7.615 7.355 7.160	7.385	6.470	6.450	NGS # AJ 3646 END FLANGE - ENCASED STAINLESS STEEL PIPE STAMPING ID SIG 7001 INTERSECTION OF COUNTRY CLUB DRIVE AND ISLAND WAY. 13.7 FT N.W. OF FIRE HYDRANT. NAYD 88

ERR = 0.0204

SAME  
CREW

#03-77473  
S.F.W.M.D.

"SITE C"

3/4/05

2542/21

STA	BS	MEAN HI	FS	MEAN	ELEV	BM ELEV	DESC
	5.160						
BM	4.920 4.680	4.720	13.185			8.265	WELL=M/237
DISC M/237				4.930 4.685 4.440	4.685	8.500	SET S.F.W.M.D. DISC STAMPED M/237
SHAKE	4.720 4.465 4.310	4.465	12.965				" "
BM				4.785 4.340 3.955	4.340	8.625	8.625 TPAH M/237 W. NO ERROR

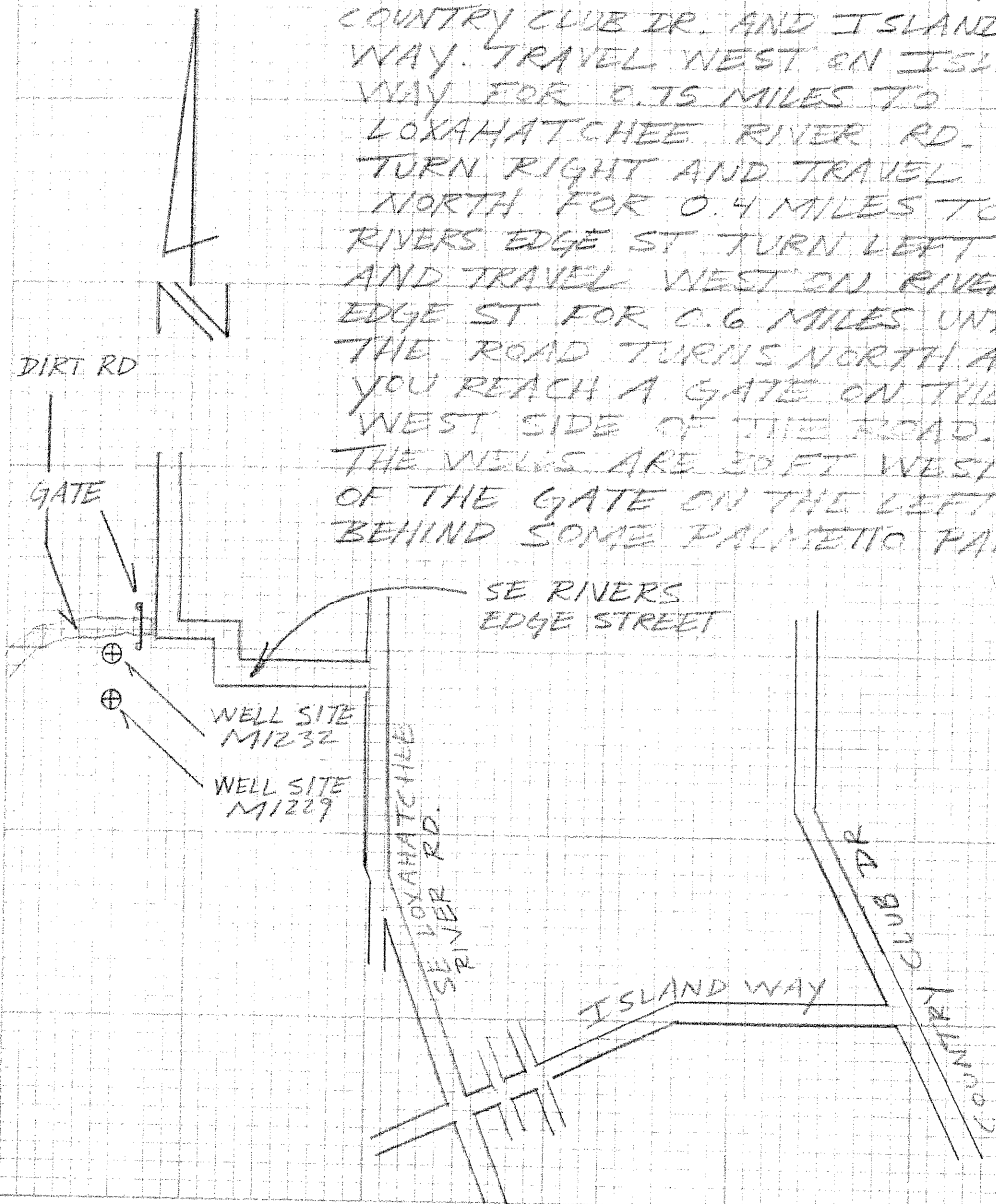
SAME  
CREW

#03-77478  
S.F.W.M.D

8/4/05

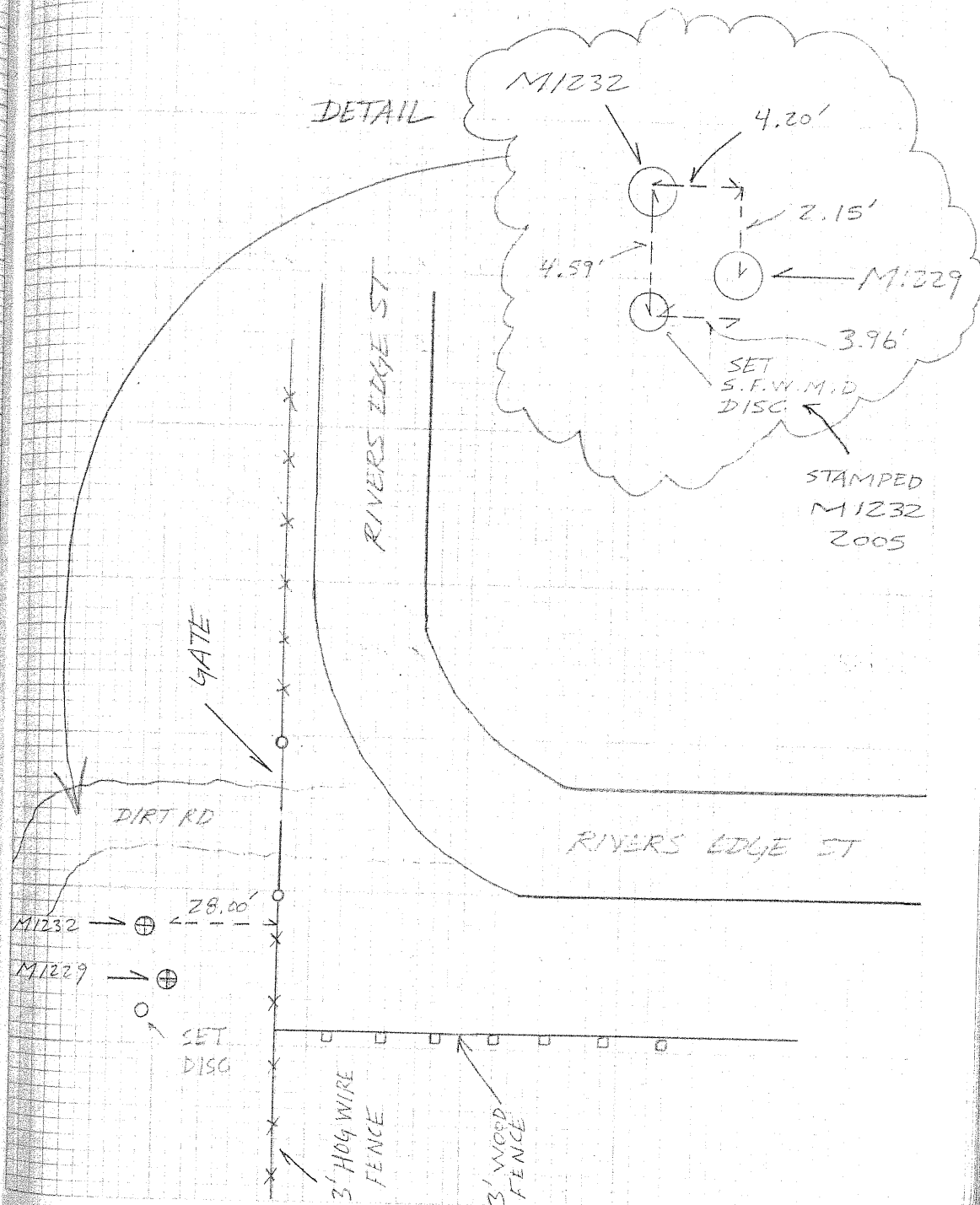
(SITE-C  
DESCRIPTION)

DIRECTIONS - FROM THE INTERSECTION OF  
COUNTRY CLUB DR. AND ISLAND  
WAY. TRAVEL WEST ON ISLAND  
WAY FOR 0.75 MILES TO  
LOXAHATCHEE RIVER RD.  
TURN RIGHT AND TRAVEL  
NORTH FOR 0.4 MILES TO  
RIVERS EDGE ST. TURN LEFT  
AND TRAVEL WEST ON RIVERS  
EDGE ST FOR 0.6 MILES UNTIL  
THE ROAD TURNS NORTH AND  
YOU REACH A GATE ON THE  
WEST SIDE OF THE ROAD.  
THE WELLS ARE 30 FT WEST  
OF THE GATE ON THE LEFT  
BEHIND SOME PALMETTO PALMS.



2548/23

DETAIL





A. PEDERO  
T. IOPTE  
N. CEDELA

#03-17478  
S.F.W.M.E.

"SITE-D9E"

(ESTABLISH  
ELEV. ON WELLS  
M1092; M1044, M128)

3/9/05

STA	BS	MEAN	HI	FS	MEAN	ELEV	BM ELEV
BM	6.570 5.310 4.050	5.310	13.230				7.920
M1092				5.430 7.305 6.180	7.305	5.925	
SHAKE	7.380 6.720 3.610	6.730	12.655				
TP#1				5.090 3.740 2.370	3.740	8.915	
SHAKE	7.740 6.150 4.560	6.150	15.065				
TP#2				6.290 4.905 3.520	4.925	10.160	

BM  
ELEV  
DESC  
NGS# AF3053  
FND DISC STAMPED 0224 1965  
0.7 MILES SOUTHEAST FROM  
AIA AND SOUTHEAST BRIDGE RD.  
20.31' NORTHEAST OF POWER POLE.  
NAVD 83

TOP OF PIPE WELL = M1092

TOP OF PIPE WELL = M1092

SET CUT NL

SET CUT NL

SET CUT NL

SAME  
CREW

#03-77173  
S. F. V. M. D

3/8/05

" SITE - D/E "

(ELEV. CONT)

STA	ES	MEAN	MI	ES	MEAN	ELEV.	BM ELEV	DESC
SHAKE	5.540 4.680 3.920	4.680	14.340					SET CUT NL
M1044				6.480 5.740 5.000	5.740	9.100		TOP OF PIPE WELL = M1044
SHAKE	6.480 5.480 4.730	5.480	14.980					TOP OF PIPE WELL = M1044
M1258				6.150 5.720 4.930	5.720	8.850		TOP OF PIPE WELL = M1258
SHAKE	7.330 6.270 5.520	6.270	14.950					TOP OF PIPE WELL = M1258
TP#3				7.160 5.400 3.640	5.400	9.450		SET CUT NL

SAME  
CREW

#03-77478  
S.F.W.M.D

5/8/05

"SITE DGE"

(ELEV. CONT)

STA	BS	MEAN	HI	FS	MEAN	ELEV	BM ELEV	DESC
SHAKE	6.750 5.730 5.710	5.230	14.68					SET CUT NL
TP#4				3.570 4.550 2.530	4.550	10.130		SET CUT NL
SHAKE	2.340 6.805 5.210	6.805	16.935					SET CUT NL
TP#5				4.260 2.495 0.730	2.495	14.440		SET CUT NL
SHAKE	7.010 7.470 5.730	7.470	21.910					SET CUT NL

EM

5.220  
3.910  
2.600

3.910

18.000 18.000  
NO ERROR

NGS# AF7531  
FND FLANGE - ENCASED STAINLESS  
STEEL ROD  
STAMPING C403 1991  
147.6' NE OF AIA  
1.3' SE OF POWER POLE

1548/26

SAME  
CREW

#03-77478  
S.F.W.M.D.

8/8/05

" SITE - E "

(ELEV. CONT.)

STA	ZS	MEAN	HI	FS	MEAN	ELEV	BM ELEV.	DESC
	6.160							
BM	5.295	5.295	14.395				9.100	WELL = M1044
	4.430							
DISC				6.010				
M1044				5.135	5.135	9.260		SET S.F.W.M.D. DISC STAMPED M1044 2005
				4.260				
	6.300							
SHAKE	5.430	5.430	14.690					" "
	4.560							
				5.260				
BM				4.530	4.530	10.160	10.160	TP # 2 CUT NL
				3.800				
								No ERROR

2548/27

SAME  
CREW

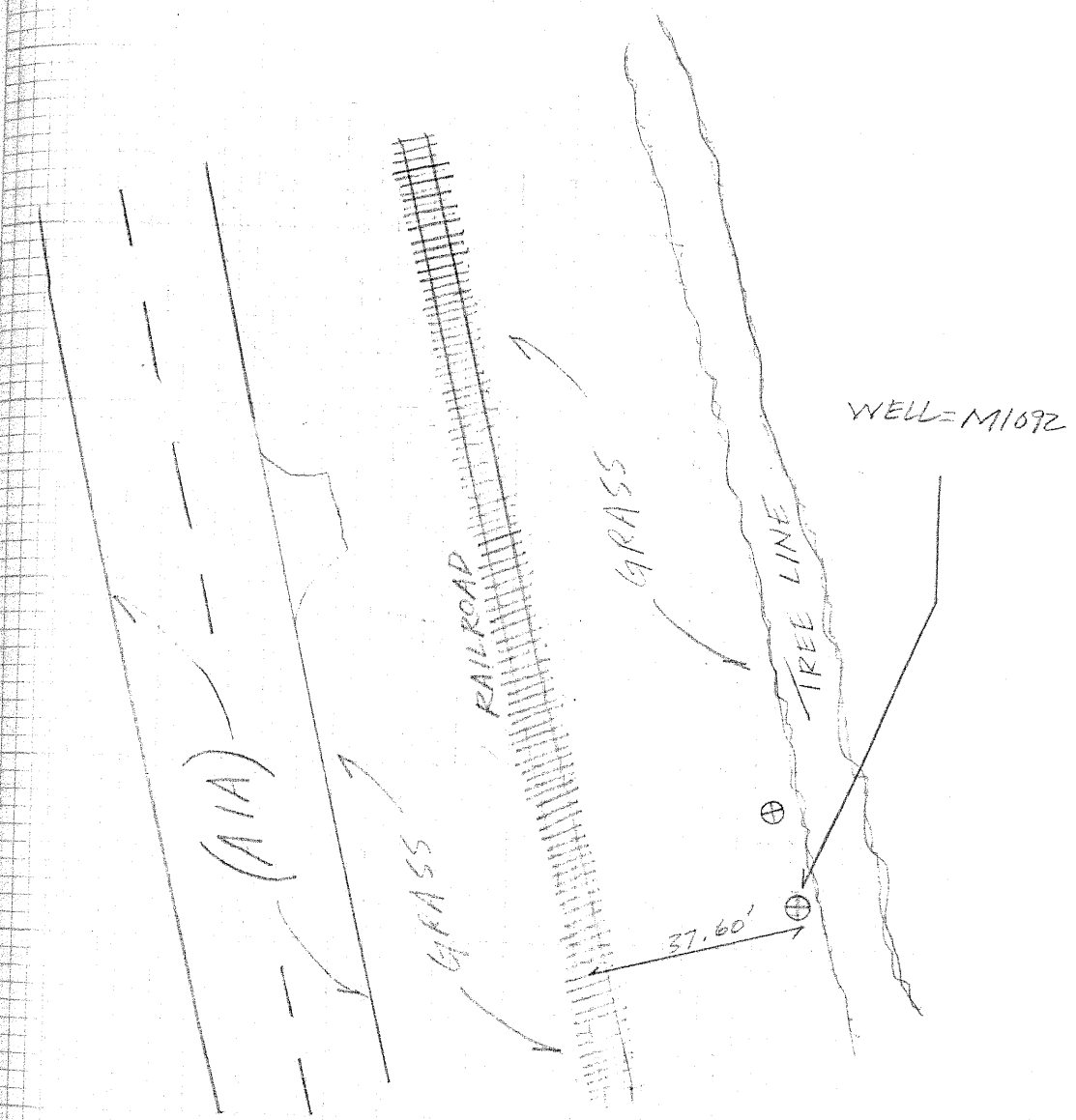
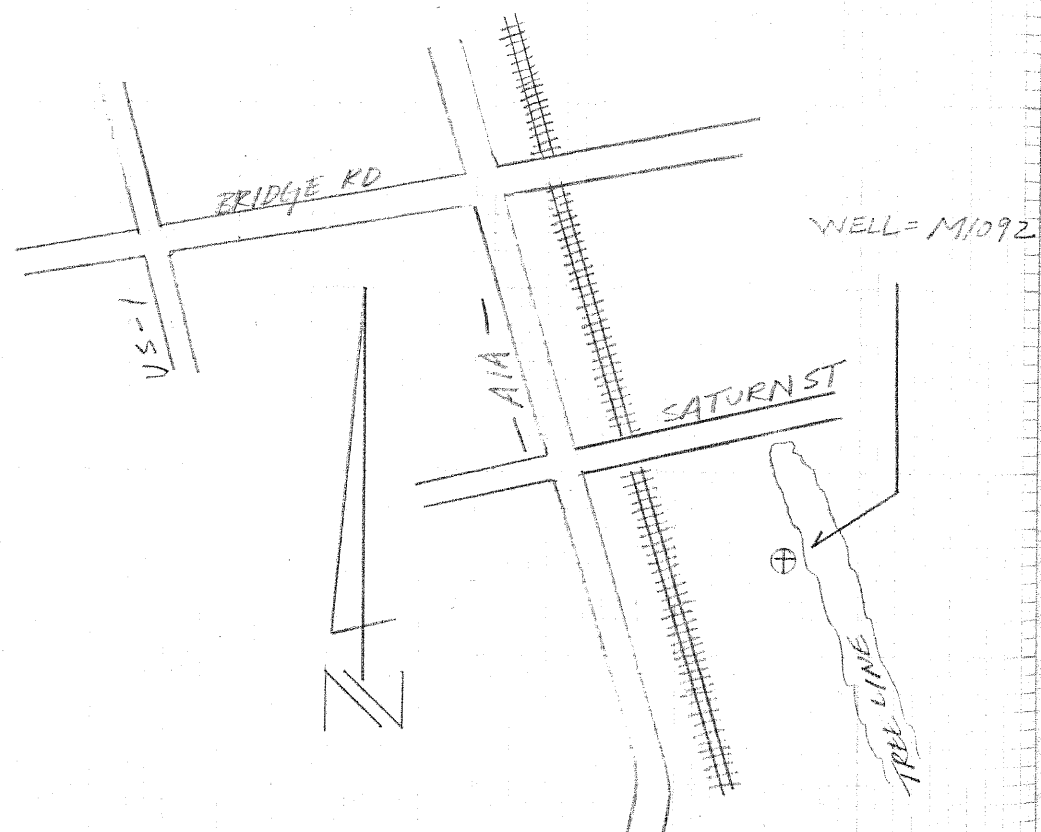
#03-77478  
S.F.W.M.D

2548/28

8/8/05

(SITE - D  
DESCRIPTION)

DIRECTIONS - FROM THE INTERSECTION OF  
BRIDGE RD. AND US-1 TRAVEL  
EAST ON BRIDGE RD. FOR 0.35  
MILES TO AIA. TURN SOUTH ON  
AIA AND TRAVEL FOR 0.7 MILES.  
PARK ON EAST SIDE OF ROAD.  
THE WELL IS 37.60 FT EAST  
OF CENTER OF RAILROAD TRACKS  
AT THE BASE OF TREE LINE  
BORDERING A TWO STORY BROWN  
HOUSE.



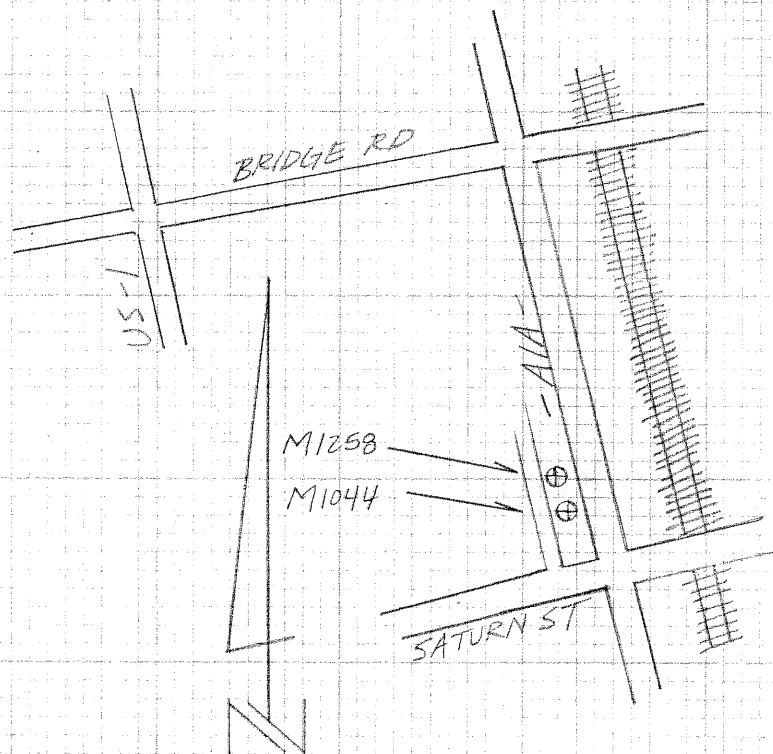
SAME  
CREW

#03-77478  
S.F.W.M.D.

8/8/05

SITE-E  
DESCRIPTION

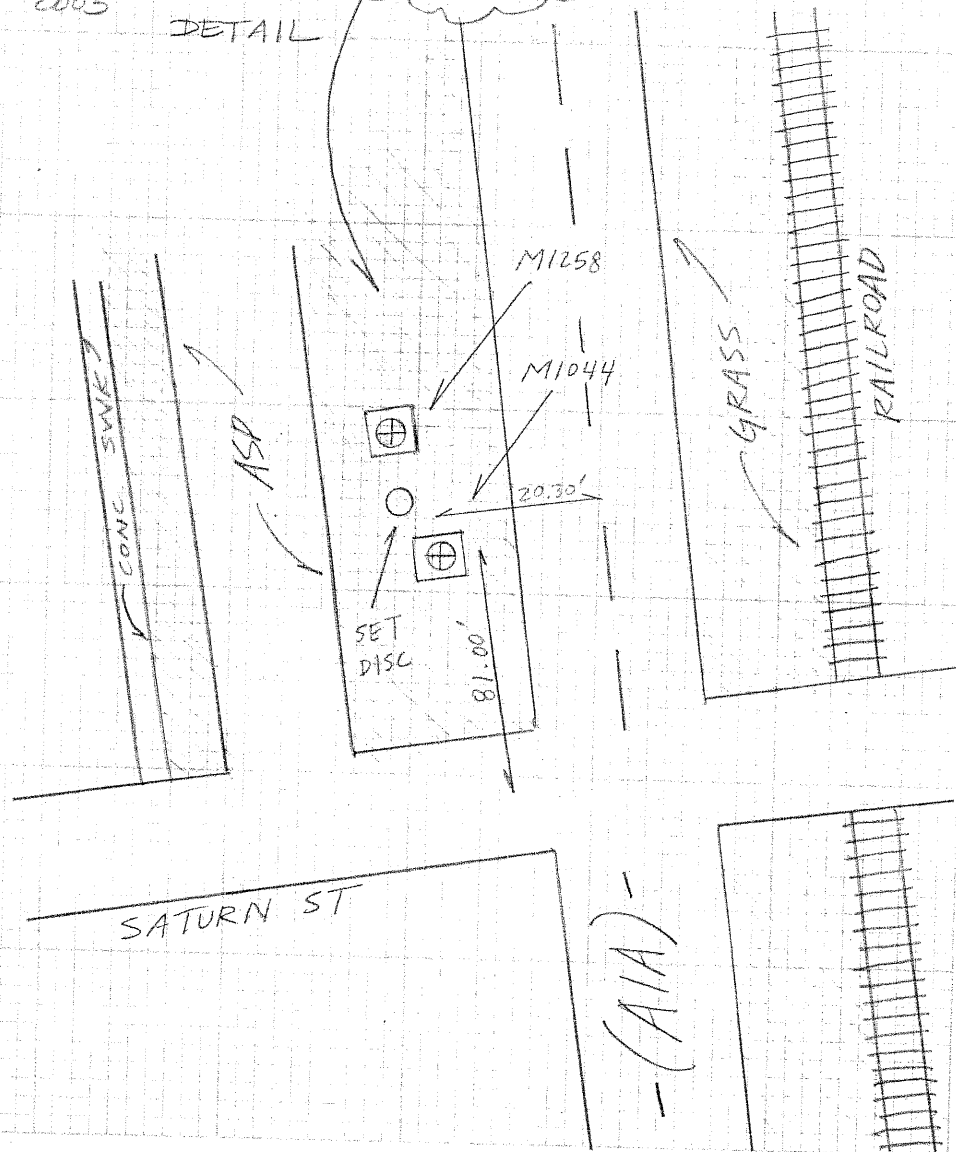
DIRECTIONS - FROM THE INTERSECTION OF  
BRIDGE RD AND US-1 TRAVEL  
EAST ON BRIDGE RD FOR 0.35  
MILES TO AIA. TURN SOUTH  
AND TRAVEL FOR 0.5 MILES  
TO SATURN ST. WELLS ARE  
JUST NORTH OF SATURN ST.  
ON THE WEST SIDE OF AIA.



2548/29

STAMPED  
M1044  
2005

DETAIL



SAME  
CREW

#03-77473  
S.F.W.M.D.  
"SITE-F"

8/3/05

(ESTABLISH  
ELEV. ON WELL  
M1057)

STA	BS	MEAN	HI	FS	MEAN	ELEV	BM ELEV
BM	8.080 5.555 5.030	6.555	11.365 ✓				4.810
TP#1				7.810 5.350 2.890	5.350	6.015 ✓	
SHAKE	9.840 8.225 6.660	8.250	14.265 ✓				
TP#2				3.770 1.930 0.190	1.930	12.285 ✓	
SHAKE	6.490 6.110 5.730	6.110	18.395 ✓				
M1057				4.325 3.990 3.655	3.990	14.405 ✓	

DESC  
N4 ~~S~~ 7555  
FIND DISC STAMPED 2414 H  
23' W. OF  $\phi$  OF GOMEZ AVE  
28' N. OF  $\phi$  OF PALM STREET  
IN NORTHWEST CORN. OF DRAINAGE  
BOX. NAVD 83

SET CUT NL  
  
SET CUT NL  
  
SET MAG NL  $\phi$  W  
  
SET MAG NL  $\phi$  W

TOP OF PIPE WELL = M1057

SAME  
CREW

#03-77478  
S.F.W.M.D.  
"SITE-F"

8/8/05

(ELEV. CONT)

STA	BS	MEAN	HI	FS	MEAN	ELEV	BM ELEV	DESC
SHAKE	7.500 7.570 6.180	7.570	21.995					TOP OF PIPE WELL = M1057
TP#3				2.940 1.745 0.550	1.745	20.250		SET CUT NL
SHAKE	6.790 6.420 6.050	6.420	26.670					SET CUT NL
BM				6.250 5.600 4.950	5.600	21.070	21.040	ERR = 0.030

NGS # 6781  
FND DISC STAMPED PINE 1929 N03  
1980. 33.5' NW OF  $\phi$  OF SE  
GROSSRIP ST. 89.6' SW OF  
A1A  $\phi$ . 0.7' SE OF WITNESS POST.  
MAY 93





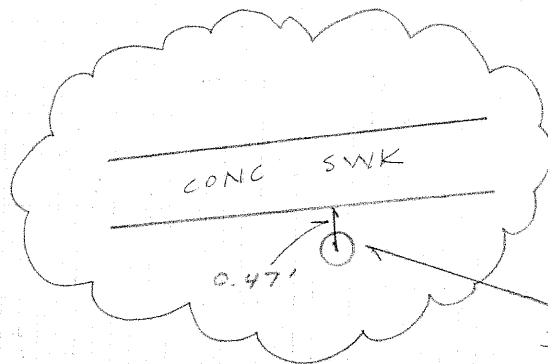
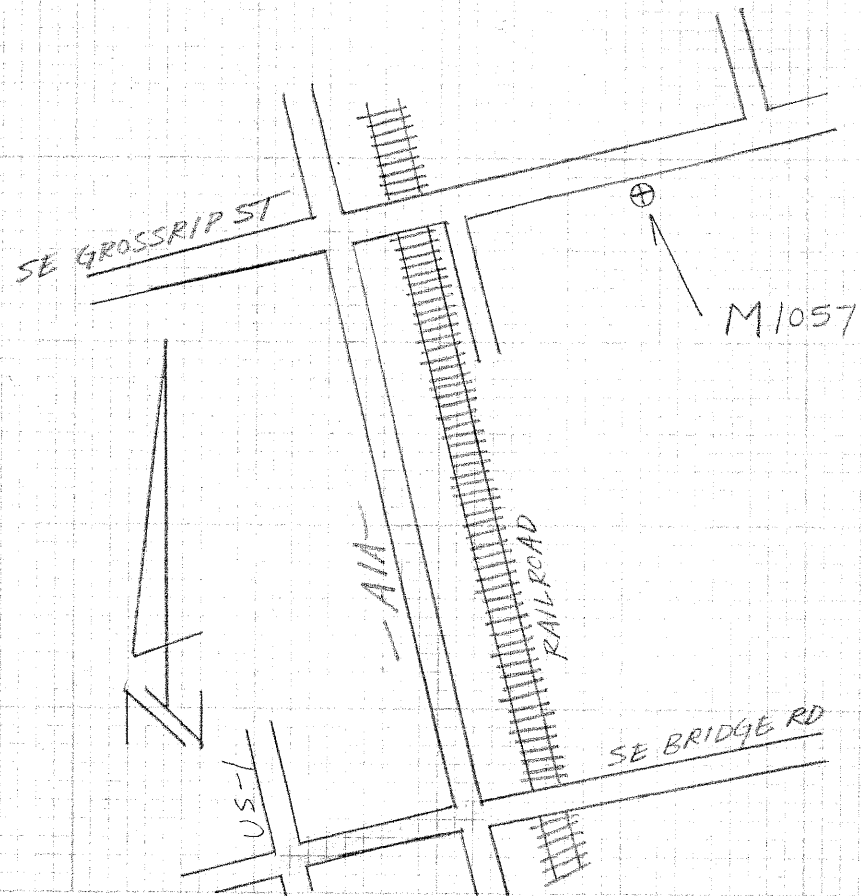
SAME  
CREW

#03-77478  
S.F.W.M.D.

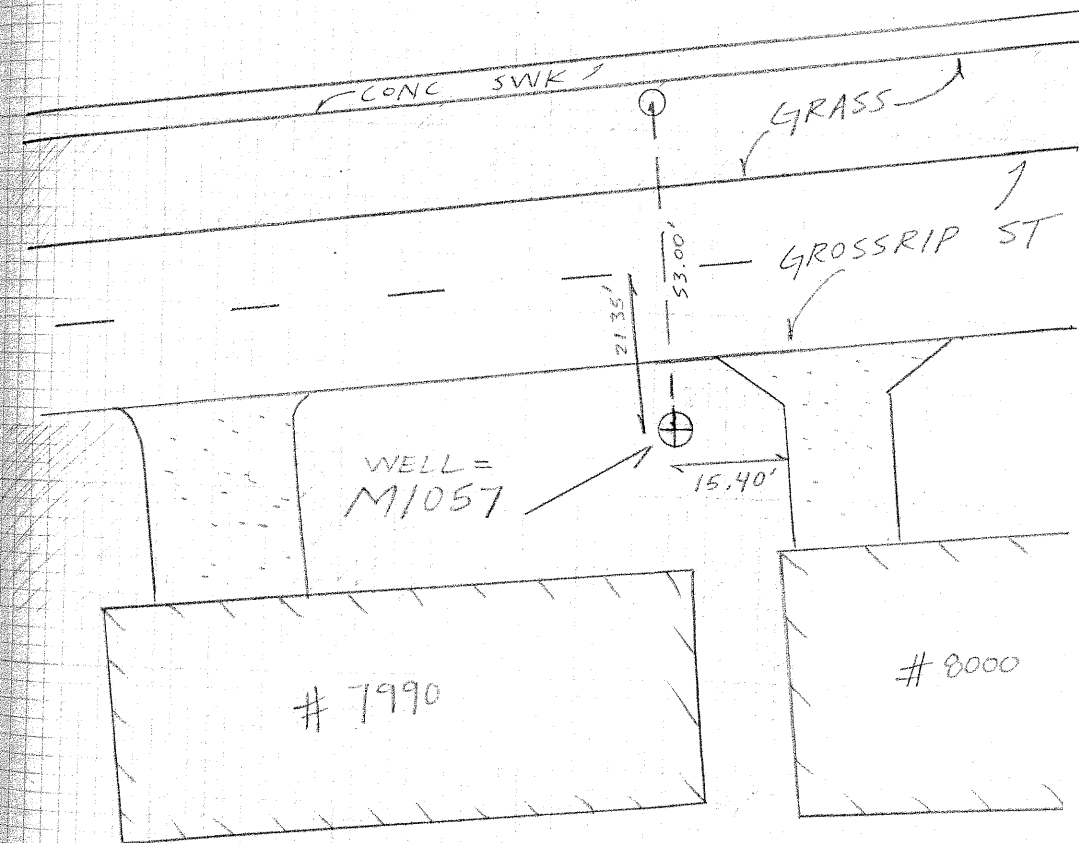
( SITE - F  
DESCRIPTION )

5/8/05

DIRECTIONS - FROM THE INTERSECTION OF US-1 AND  
BRIDGE RD. TRAVEL EAST FOR 0.35 M.  
TO AIA. TURN LEFT AND TRAVEL  
NORTH ON AIA FOR 2.5 MILES  
TO CROSSRIP ST. AT CROSSRIP  
STREET TURN RIGHT AND  
TRAVEL EAST FOR 0.15 MILES  
THE WELL IS ON SOUTH SIDE  
OF ROAD IN FRONT OF HOUSE  
# 7990.



SET S.F.W.M.D  
DISC  
STAMPED  
M1057 2005



A. REIERS  
T. LOPEZ  
C. CHENTLES

#03-77478  
S.F.W.M.D.  
"SITE - 4"

8/15/05

(ESTABLISH  
ELEV ON WELL=  
M1269)

STA	BS	MEAN	HI.	FS	MEAN	ELEV	BM ELEV	DESC
	4.160							
BM	3.320 2.480	3.320	20.950				17.630	NGS# 435618 FIND DISC SIMIAPAL NS17 2001 250' S. OF TWIN RIVERS MOBILE HOME PARK ENTRANCE 3.8' NORTHWEST OF POWER POLE. NAVS 88
TP#1				5.920 4.635 3.350	4.635	16.315		SET CUT NL
SHAKE	7.320 5.845 4.370	5.845	22.160					SET CUT NL
TP#2				6.010 4.600 3.190	4.600	17.560		SET CUT NL
SHAKE	7.470 5.730 3.990	5.730	23.290					SET CUT NL
TP#3				5.415 4.125 2.835	4.125	19.165		SET CUT NL

SAME  
CREW

#03-77478  
S.F.W.M.D.

"SITE-4"

8/15/05

(ELEV. CONT)

STA	BS	MEAN	HI	FS	MEAN	ELEV	BM ELEV	DESC
SHAKE	6.045 5.745 5.445	5.745	24.910					SET CUT NL
M1269				7.370 6.915 6.460	6.915	17.995		TOP OF PIPE WELL = M1269
SHAKE	7.630 6.440 5.250	6.440	24.435					" "
TP # 4				6.420 4.800 3.130	4.800	19.635		SET CUT NL
SHAKE	6.660 4.890 3.120	4.890	24.525					SET CUT NL
TP # 5				6.900 5.610 4.320	5.610	18.915		SET CUT NL

SAME  
CREW

#03-77478  
S.F.W.M.D.  
"SITE-G"

540/36

8/15/05

(ELEV. CONT)

STA	BS	MEAN	HI	FS	MEAN ELEV	BM ELEV	DESC
SHAKE	5.760 4.180 2.600	4.180	23.095	✓			SET CUT NL
TP#6				6.800 5.290 3.780	5.290	17.805	✓ SET CUT NL
SHAKE	6.390 4.630 2.870	4.630	22.435	✓			SET CUT NL
TP#7				6.800 5.060 3.320	5.060	17.375	✓ SET CUT NL
SHAKE	6.480 4.975 3.470	4.975	22.350	✓			SET CUT NL
TP#8				6.370 4.995 3.600	4.995	17.355	✓ SET CUT NL

SAME  
CREW

#03-77478  
S.F.W.M.D.

8/15/05

"SITE - G"

(ELEV. CONT)

STA	BS	MEAN	HI	FS	MEAN	ELEV	BM ELEV	DESC
SHAKE	9.380 8.125 6.870	8.125	25.480					SET CUT NL

TP# 9				2.450 1.560 0.670	1.560	23.920		SET CUT NL
-------	--	--	--	-------------------------	-------	--------	--	------------

SHAKE	4.780 4.520 4.260	4.520	28.440					SET CUT NL
-------	-------------------------	-------	--------	--	--	--	--	------------

BM				6.170 5.925 5.680	5.925	22.515	22.480	NGS # AJ 5619 FND DISC STAMPED LS17 2001 180' NORTHWEST FROM $\phi$ OF OSPREY ST. 11.2' NORTHEAST OF BARBED WIRE FENCE. NAVD 88
----	--	--	--	-------------------------	-------	--------	--------	--

ERR = 0.035

SAME  
CREW

#03-77473  
S.F.W.M.D.  
"SITE-4"

e/15/05

(ELEV. CONT)

STA	BS	MEAN	HL	FS	MEAN	ELEV.	EM ELEV	DESC
	6.940							
BM	6.310 6.750	6.610	24.605	✓			17.995	NELL = M1267
				5.600				
DISC.				5.290	6.290	18.315	✓	SET S.F.W.M.D. DISC STAMPED M1267
				5.780				
	6.800							
SHAKE	6.460 6.180	6.460	24.775	✓				" "
				6.070				
EM				5.610	5.610	19.165	19.165	TRIP #3 CUT #2
				5.150				NO ERROR

254 / 30

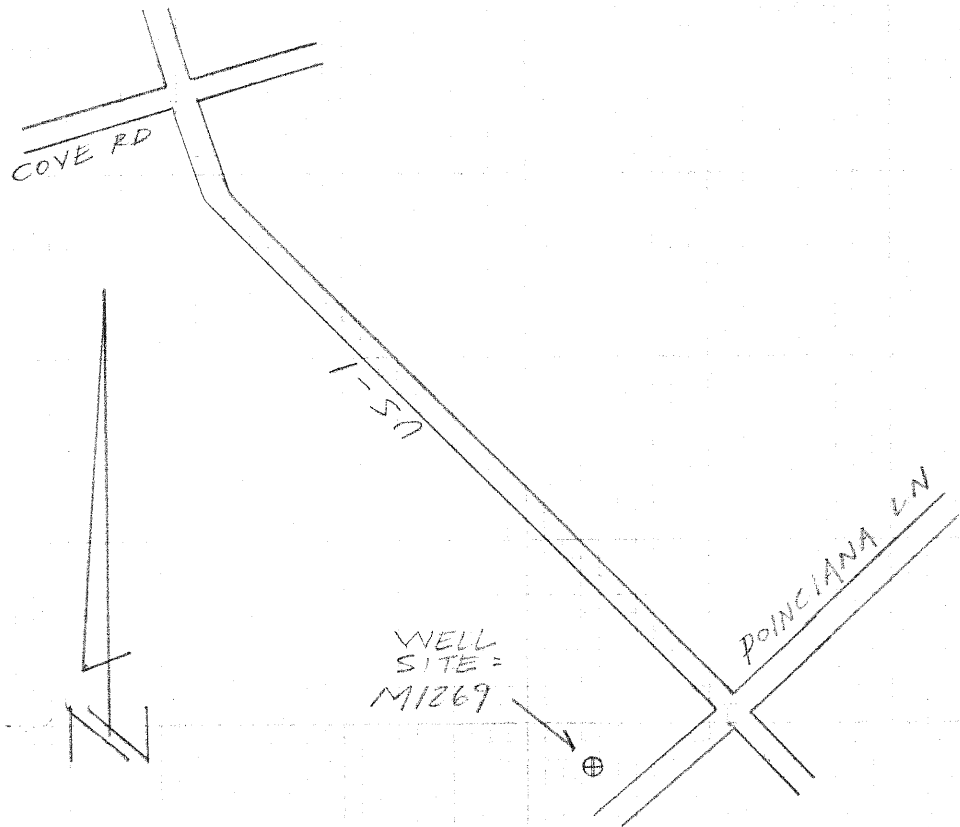
SAME  
CREW

#03-77478  
S.F.W.M.D.

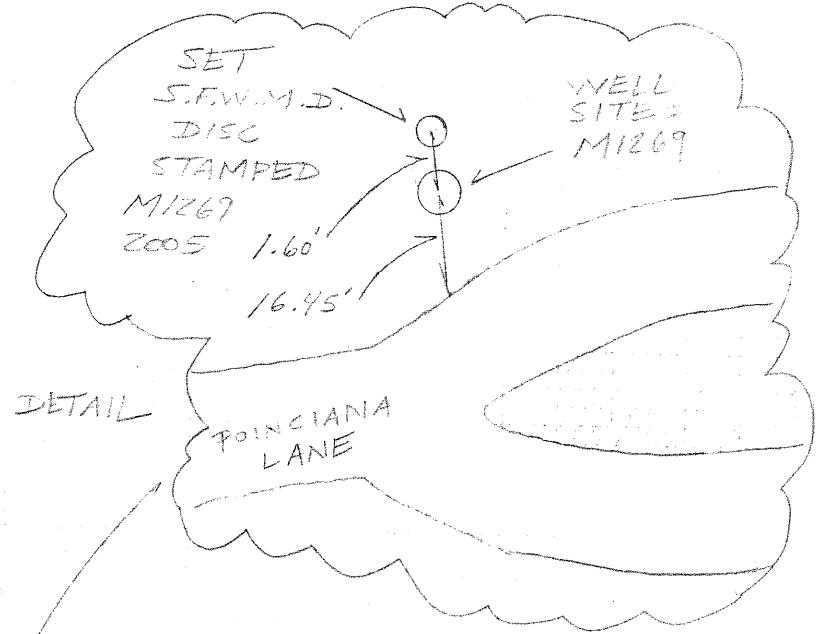
(SITE-G  
DESCRIPTION)

8/15/05

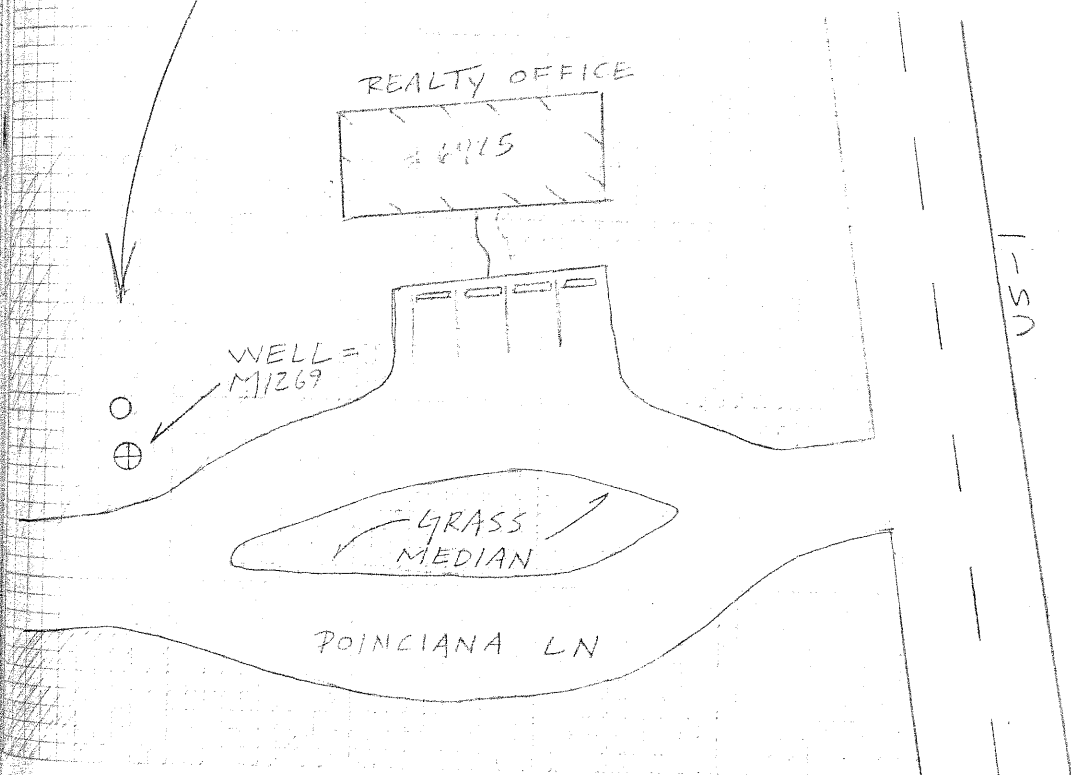
DIRECTIONS - FROM THE INTERSECTION OF  
US-1 AND COVE RD. TRAVEL  
SOUTH ON US-1 FOR 3.1 MILES  
TO POINCIANA LANE. TURN  
RIGHT AND TRAVEL WEST.  
THE WELL IS ON NORTH SIDE  
OF POINCIANA LANE RIGHT  
AFTER YOU PASS REALTY OFFICE  
AT THE END OF MEDIAN STRIP.



2548/39



DETAIL





A. REJERO  
T. LOPEZ  
A. SAITANA

#03-77478  
S. F. W. M. D.  
"SITE - H"

6/13/05

ESTABLISH  
ELEV ON WELLS  
M1235, M1270

STA	BS	MEAN	HI	FS	MEAN	ELEV	BM ELEV	DESC
BM	4.860 4.320 3.780	4.320	45.75 4.575				✓ 41.430	NGS # AC5345 725 BRASS STAMPED I 95 87 A BY REF MK 2. IN MEDIAN AT N. EDGE OF BRIDGE IN CONC. GUTTER 9.5' NORTH OF THE NW END OF SOUTHWEST BRIDGE. NAVD 83
TP#1				16.540 16.535 15.530	15.535	29.715	✓	SET 3" I SPIKE
SHAKE	3.010 2.850 2.690	2.850	32.565					SET 5" I SPIKE
TP#2				14.630 14.310 13.990	14.310	18.255	✓	SET CUT NL
SHAKE	7.360 5.770 4.550	5.770	24.225					SET CUT NL
TP#3				7.590 5.730 3.870	5.730	18.495	✓	SET CUT NL

SAME  
CREVY

#03-71775  
S.F.W.M.D.  
"SITE - H"

8/18/05

(ELEV. CONT)

STA	BS	MEAN HI	FS	MEAN	ELEV	BM ELEV	DISC
SHAKE	7.070 5.475 3.830	5.475	23.970				SET CUT NL
TP#4			7.360 5.750 4.140	5.750	18.220		SET CUT NL
SHAKE	7.300 6.410 5.520	6.410	24.630				SET CUT NL
DISC M1235			8.940 8.490 8.040	8.490	16.140		SET S.F.W.M.D BRASS D. STAMPED M1235 2005
SHAKE	4.680 4.220 3.760	4.220	20.36				"
M1235			3.770 3.575 3.380	3.575	16.785		WELL = M1235

SAME  
CREW

#-3-70478  
STATION  
ELEVATION

3/13/05

(ELEV. CONT)

STA	BS	MEAN HI	FS	MEAN ELEV	B/M ELEV	SIDE
SHAKE	3.91 3.91 3.91	3.91	20.695			WELL = M1235
M1270			5.125 5.23 5.175	5.13	15.165	WELL = M1270
SHAKE	5.420 5.240 5.060	5.240	20.405			WELL = M1270
TP45			3.550 3.030 2.510	3.030	17.375	SET CUT NL
SHAKE	7.910 7.390 6.870	7.390	24.765			SET CUT NL
TP46			7.390 6.560 5.730	6.560	18.215	SET CUT NL

SAME  
CREW

#03-77478  
S.F.W.M.D.  
"SITE-H"

3/15/05

(ELEV. CONT)

STA	BS	MEAN	HI	FS	MEAN	ELEV	BM ELEV	DESC
SHAKE	7.260 5.790 4.320	5.790	24.005					SET CUT NL
TP#7				7.250 5.510 3.770	5.510	18.495		SET CUT NL
SHAKE	6.920 5.480 4.040	5.480	23.975					SET CUT NL
TP#8				7.510 5.710 3.910	5.710	18.265		SET CUT NL
SHAKE	13.030 12.715 12.460	12.745	31.010					SET CUT NL
TP#9				1.440 1.290 1.140	1.290	29.720		SET 60D SPIKE

SAME  
CREW

#03-77478  
S.F.W.M.D.  
"SITE-H"

8/18/05

(ELEV. CONT.)

STA	BS	MEAN	HI	FS	MEAN	ELEV	BM ELEV	DESC
-----	----	------	----	----	------	------	------------	------

	18.210							
SHAKE	17.750	17.750	47.470					SET 80 D SPIKE
	17.290							

BM		5.705						
		5.445	5.445		42.025	42.000		
		5.185						

ERR = 0.025

NGS # ACS343 FDOT BRASS I.D.  
STAMPED I 95 89 A 24  
IN MEDIAN AT NORTH END OF  
BRIDGE. 4.6' N. OF THE N.  
CONC. GUARDRAIL BETWEEN  
N. AND S. LANES.  
NAVD 88.

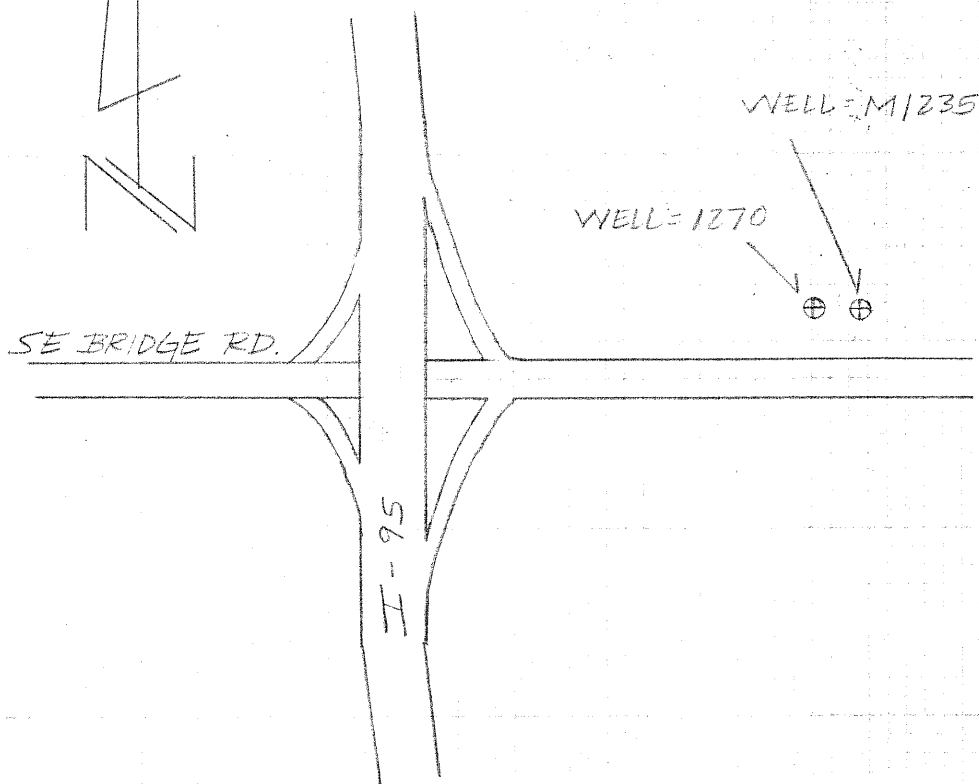
SAME  
CREW

#03-77478  
S.F.W.M.D

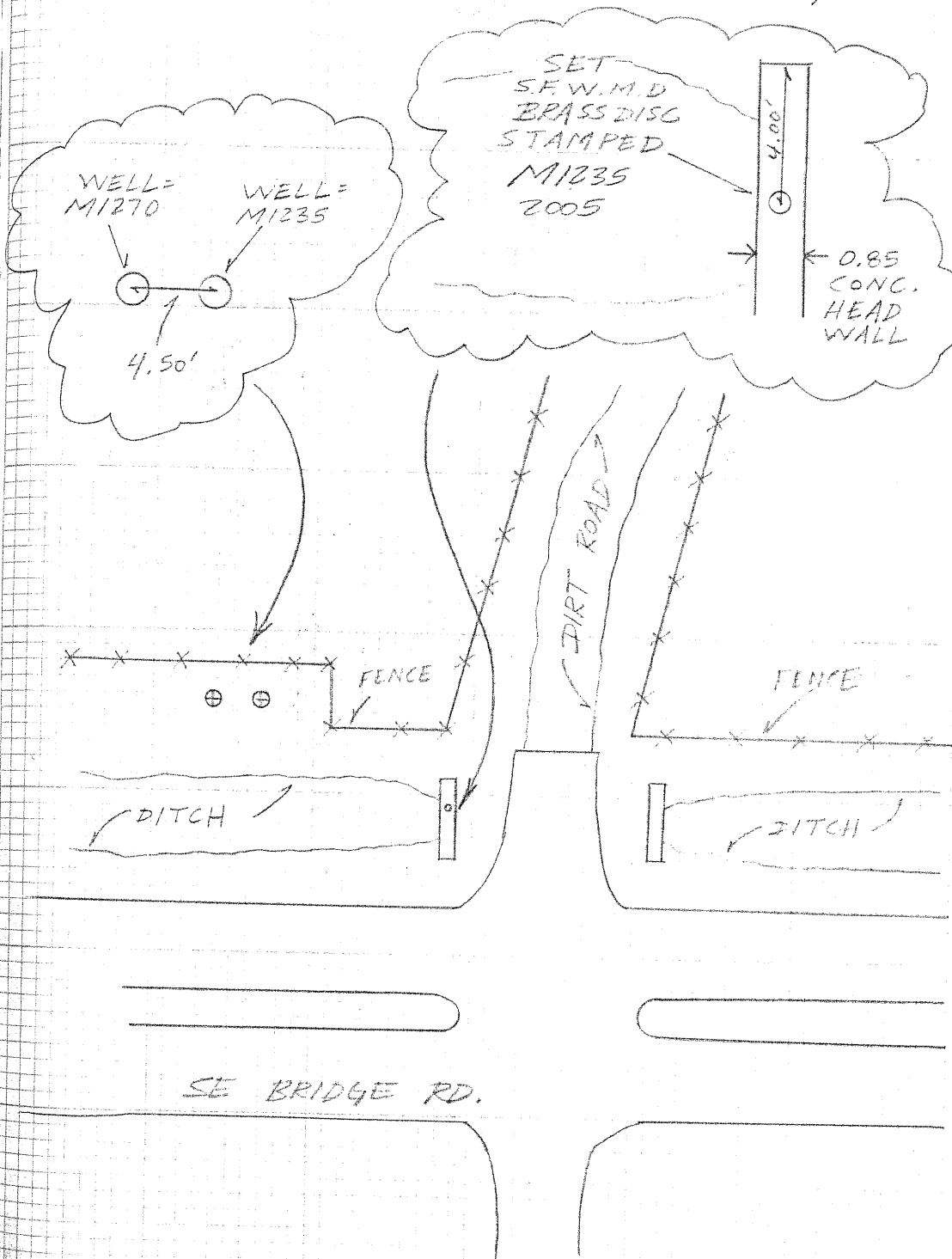
8/18/05

(SITE - H  
DESCRIPTION)

DIRECTIONS - FROM THE INTERSECTION OF  
I-95 AND BRIDGE RD. TRAVEL  
EAST ON BRIDGE RD. FOR 0.3  
MILES. TURN NORTH ON  
DIRT RD AND PARK IN BETWEEN  
DITCH AND FENCE LINE.  
THE WELL IS ON THE NORTH  
SIDE OF THE ACCESS RD. AND  
67' WEST OF DIRT RD.



2543/45



A. REJERO  
T. LOPEZ  
A. LOPEZ

#03-77478  
S.F.W.M.L.

3/19/05

"SITE - I"

(ESTABLISH  
ELEV ON WELL =  
M1081)

STA	BS	MEAN	HI	FS	MEAN	ELEV	BM ELEV	DESC
BM	8.520 7.140 5.760	7.140	32.270				25.130	NGS#AJ8248 FND DISC STAMPED NS22 2001 CERP 48.6 N. OF $\phi$ OF KANNER RD 37.0 S. OF POWER POLE W/ GUY WIRE ON W. SIDE OF GATE. NAVD 88
TP# 1				6.590 5.035 3.480	5.035	27.235		SET CUT NL
SHAKE	6.150 5.255 4.360	5.255	32.490					SET CUT NL
M1081				5.035 4.665 4.235	4.665	27.825		WELL # M1081
SHAKE	4.630 4.255 3.235	4.255	32.075					SET CUT NL
TP# 2				5.730 4.840 3.750	4.840	27.235		SET CUT NL

SAME  
CREW

#03-77478  
S.F.W.M.D

2548/47

8/19/05

"SITE - I"

(ELEV. CONT)

STA	BS	MEAN	HI	FS	MEAN	ELEV	BM ELEV	DESC
SHAKE	7.000 5.250 3.500	5.250	32.485					SET CUT NL
TP# 3				7.660 5.295 3.530	5.295	27.190		SET CUT NL
SHAKE	7.370 5.300 3.230	5.300	32.490					SET CUT NL
TP# 4				7.760 5.560 3.360	5.560	26.930		SET CUT NL
SHAKE	8.200 6.095 3.990	6.095	33.025					SET CUT NL
TP# 5				7.030 4.825 2.620	4.825	28.200		SET CUT NL



SAME  
CREW

#03-77478  
S. F. W. M. D

" SITE - I "

8/19/05

(ELEV. CONT)

STA	BS	MEAN	HI	FS	MEAN	ELEV	BM ELEV	DESC
SHAKE	6.520 4.190 1.860	4.190	32.390 ✓					SET CUT NL
TP# 6				7.450 5.210 2.970	5.210	27.180 ✓		SET CUT NL
SHAKE	7.460 4.720 1.980	4.720	31.900 ✓					SET CUT NL
TP# 7				7.000 4.945 2.890	4.945	26.955 ✓		SET CUT NL
SHAKE	7.170 5.330 3.490	5.330	32.785 ✓					SET CUT NL
TP# 8				7.640 5.370 3.100	5.370	26.915 ✓		SET CUT NL

SAME  
CREW

#03-77478  
S.F.W.M.D.

8/19/05

"SITE-I"

(ELEV. CONT)

STA	BS	MEAN	HI	FS	MEAN
SHAKE	6.620 4.800 2.980	4.800	31.715	✓	
BM				8.050 6.810 5.570	6.810

ELEV.	BM ELEV.	DESC
-------	----------	------

SET CUT NL

↓ ↓  
24.905 24.870  
ERR = 0.035

NGS #AJ8247 END FLANGE  
ENCASED ROD STAMPING  
M 522 2001 CERP  
0.2 MILES WEST OF ENTRANCE  
TO PAYSON PARK, 120' S. OF  
C. OF ROAD, 4.0' NORTH OF  
WOODEN FENCE.  
NAVJ 88



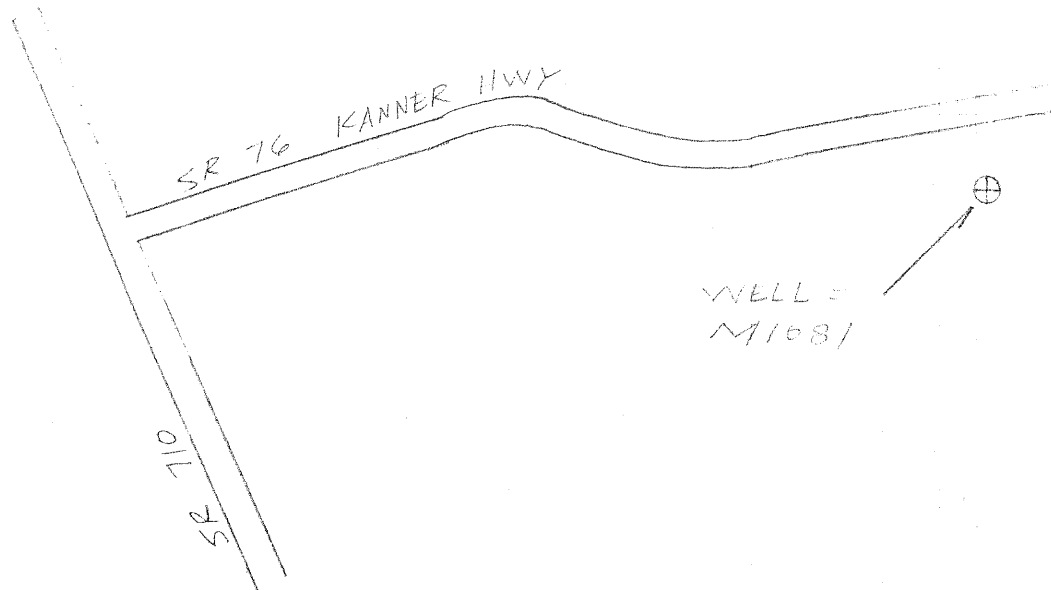
SAME  
CREW

#03-77473  
S.F.W.M.D.

( SITE - I  
DESCRIPTION )

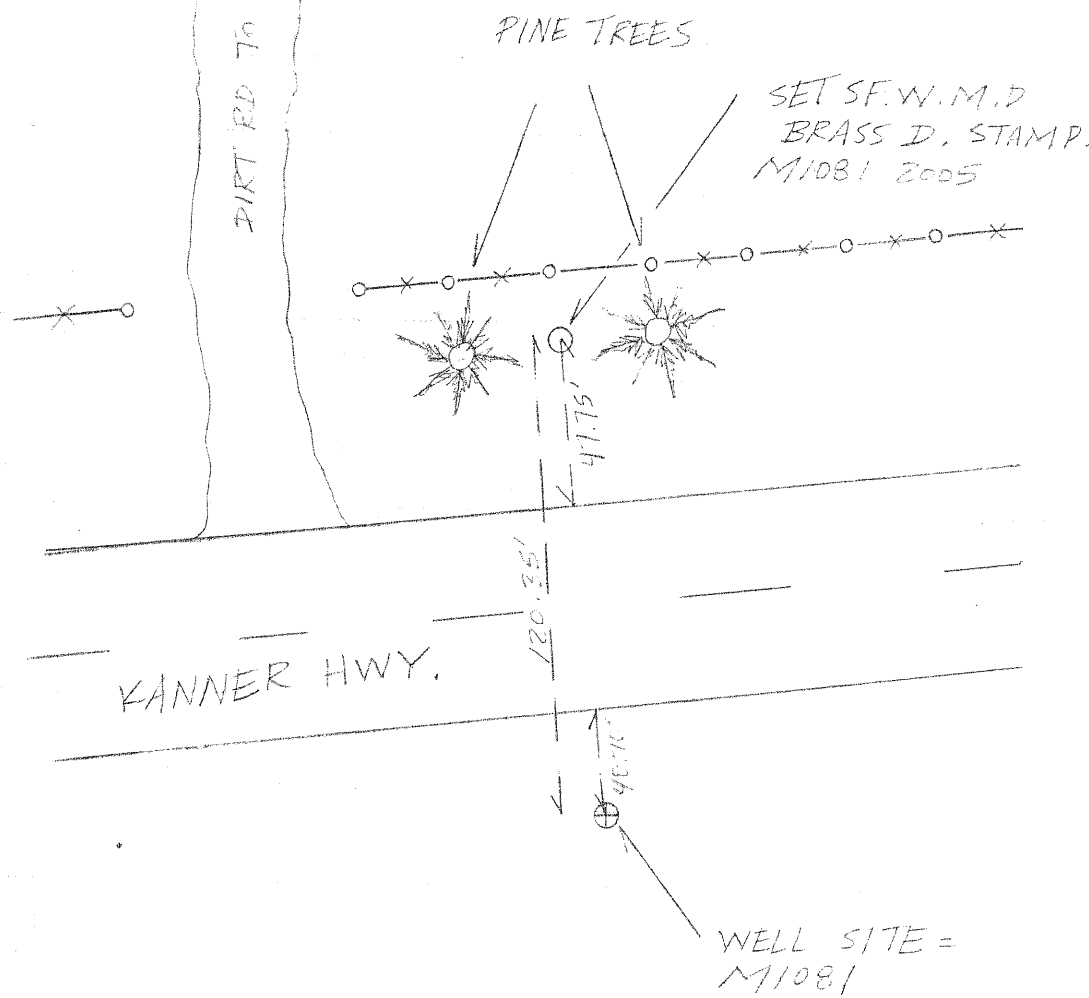
9/2/05

DIRECTIONS - FROM THE INTERSECTION  
OF BEELINE HWY (SR 710) AND  
KANNER HWY (SR 76) TRAVEL  
EAST ON KANNER HWY FOR  
5.35 MILES. THE WELL IS TO  
THE RIGHT IN THE SOUTHERN  
ROADSIDE EASEMENT, DIRECTLY  
ACROSS FROM HOUSE # 5025.  
ABOUT 40.75' SOUTH OF EP.



2545/51

DIRT RD TO HOUSE # 5025



SAME  
CREW

#02-11473  
S.F.W.M.D  
" SITE - I "

9/2/05

(ESTABLISH  
ELEV. ON WELL  
M1045)

STA	BS	MEAN HI	FS	MEAN	BM ELEV. ELEV	DESC
BM	6.755 5.010 3.270	5.010	30.740 ✓		25.730	M45 #AJ0864 TND DICK #347 40 EAST 595 N. 135 E TRENCH SR TO AND SR TO 30.4' N OF A SH 110 17.5' S OF N. TRENCH WEST NOTE BS
TP #1			5.540 4.970 2.640	4.090	26.650 ✓	SET CUT NL
SHAPE	5.920 4.340 2.760	4.340	30.970 ✓			SET CUT NL
TP #2			5.280 4.360 3.440	4.380	26.630 ✓	SET CUT NL
SHAPE	4.510 4.135 3.760	4.135	30.765 ✓			SET CUT NL
M1045			6.710 5.315 5.920	6.315	24.450 ✓	TOP OF PIPE WELL = M1045

SAME  
CREW

# 23-77478  
SITE A.M.P

"SITE - J"

9/23/05  
1/1

BLIND GROUT

STA	BS	MEAN	HI	FS	MEAN
SHAKE	6.975 6.470 6.075	6.470	30.920		
TP # 3				4.665 4.285 3.905	4.285
SHAKE	6.000 4.535 3.050	4.535	31.170		
TP # 4				5.960 4.530 3.100	4.530
SHAKE	5.790 4.420 2.850	4.420	31.060		
TP # 5				5.720 4.285 2.850	4.285

ZM  
ELEV ELEV DEISC

TOP OF PIPE WELL = M1045

26.635 ✓	SET CUT NL
26.645 ✓	SET CUT NL
26.775 ✓	SET CUT NL

SAME  
CREV.

#03-7713  
S.F.W.M.D.

2/2/05

"SITE-J"

(ELEV. CONT)

STA	BS	MEAN	HI	FS	MEAN	ELEV	BM ELEV	DESC
SHAKE	5.950 4.440 2.930	4.440	31.215	✓				SET CUT NL
TP# 6				5.860 4.340 3.300	4.340	26.875	✓	SET CUT NL
SHAKE	6.130 4.400 2.670	4.400	31.275	✓				SET CUT NL
TP# 7				6.070 4.505 2.940	4.505	26.770	✓	SET CUT NL
SHAKE	6.070 4.370 2.670	4.370	31.140	✓				SET CUT NL
TP# 8				6.320 4.465 2.610	4.465	26.675	✓	SET CUT NL

SADSE  
COPEN

#03-77473  
S. F. W. M. E

9/2/05

"SITE J"

(ELEV. CONT)

STA	BS	MEAN	HI	FS	MEAN	ELEV	BM ELEV	DESC
SHAKE	6.37 4.45 2.93	4.450	31.125					SET CUT NL
TP#9				6.200 4.470 2.740	4.470	26.655 ✓		SET CUT NL
SHAKE	6.385 4.340 2.300	4.340	30.995					SET CUT NL
TP#10				6.150 4.560 2.970	4.560	26.435 ✓		SET CUT NL
SHAKE	6.190 4.395 2.600	4.395	30.830					SET CUT NL
TP#11				5.660 4.215 2.770	4.215	26.615 ✓		SET CUT NL



SAME  
CROSS

#03-77478  
S. F. W. M. D.

"SITE - J"

(ELEV. CONT)

7/3/85

STA	BS	MEAN	HI	FS	MEAN	ELEV	BM ELEV	DESC
SHAKE	6.570 4.415 2.760	4.415	31.030 ✓					SET CUT NL
TP#12				5.720 4.500 3.270	4.500	26.530 ✓		SET CUT NL
SHAKE	5.736 4.210 2.690	4.210	30.740 ✓					SET CUT NL
BM				7.870 5.890 4.720	5.890	24.860 ✓	24.880	NG5# AJ8886 FND FLANGE ENCASED ROD. STAMP. E 247 GO EAST FOR 5 MILES FROM INTER. OF SR 710 AND SR 76. 20.7' N OF C. OF RD. 11.4' S. OF WITNESS POST NAME 88.
						ERR: 0.020		

A. FEDERO  
T. LOPEZ  
M. MOYA

#03-77478  
S.F.W.M.D

"SITE - J"

9/6/05

(ELEV. CONT.)

STA	BS	MEAN	HI	FS	MEAN	ELEV	BM ELEV	DESC
BM	6.550 6.140 5.730	6.140	30.590 ✓				24.450	TOP OF PIPE = M1045
DISC M1045				5.905 5.285 5.165	5.285	25.305 ✓		SET J.F.W.M.D BRASS D. STAMPED M1045 2005
SHAKE	5.910 5.735 5.660	5.735	31.090 ✓					" "
BM				4.670 4.460 4.250	4.460	26.630 ✓	26.630	TP #1 SET CUT NL NO ERROR

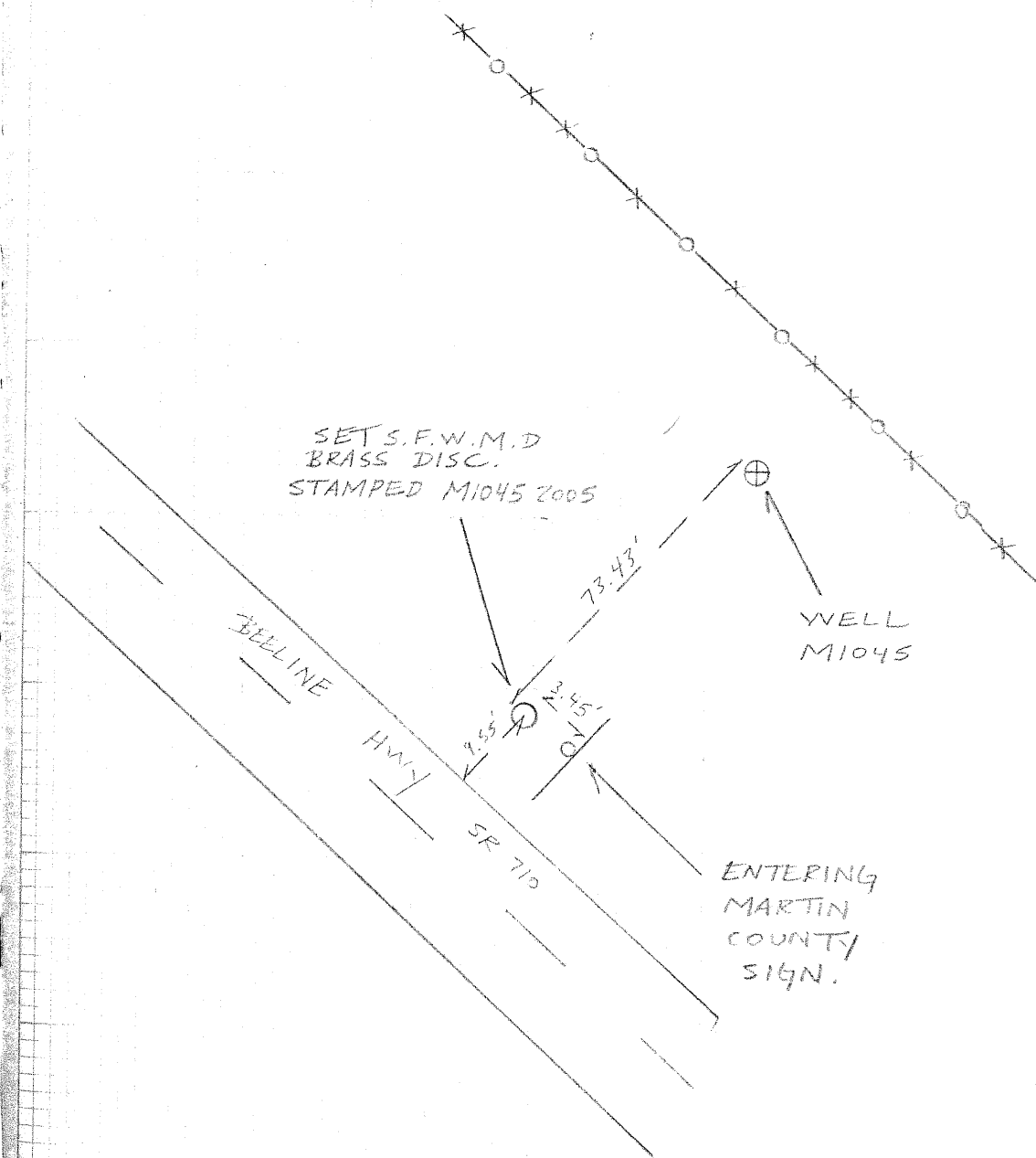
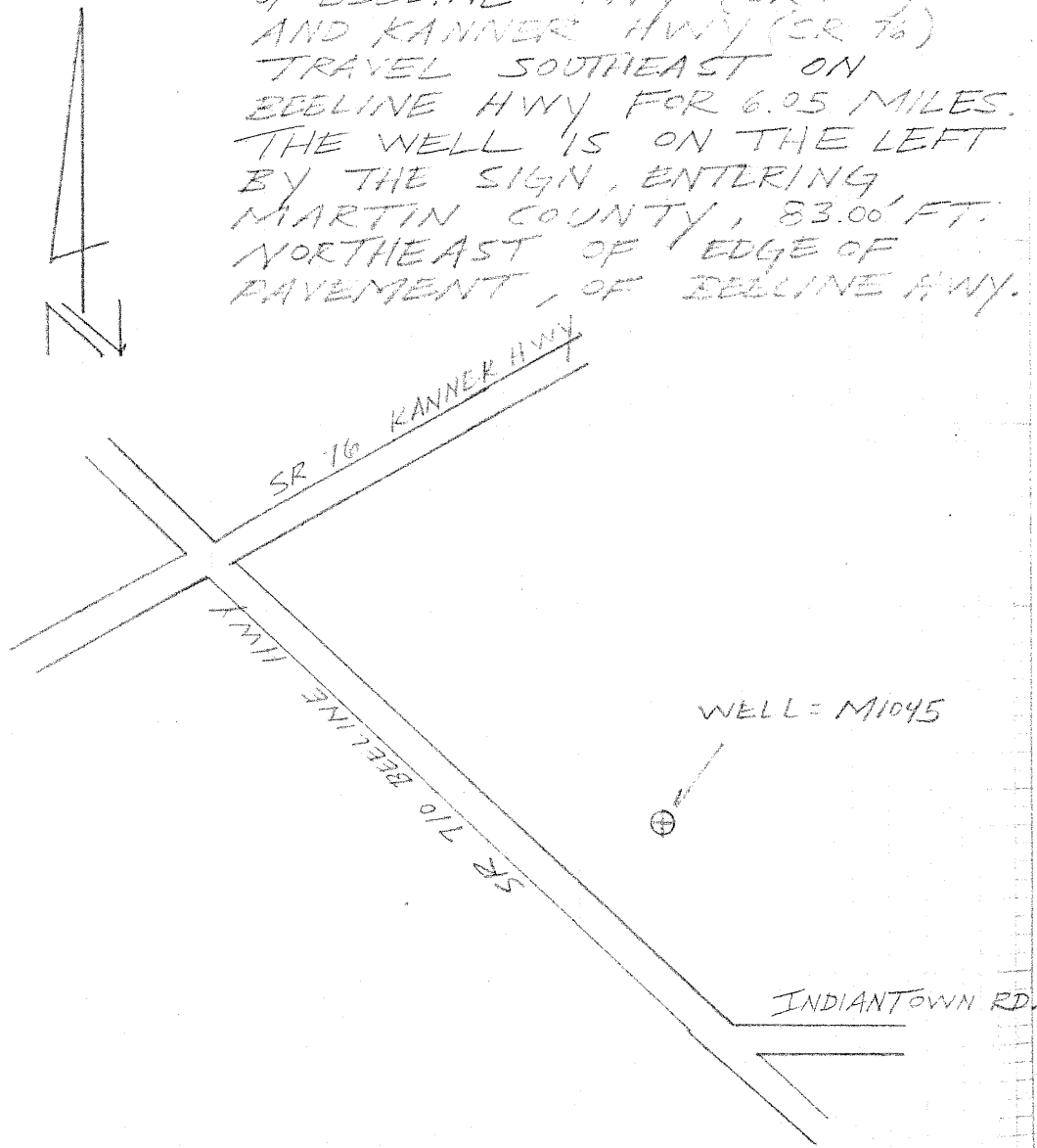
SAME  
CREW

#03-77478  
S.F.W.M.D.

( SITE - J  
DESCRIPTION )

9/6/05

DIRECTIONS - FROM THE INTERSECTION  
OF BEELINE HWY (SR 710)  
AND KANNER HWY (SR 16)  
TRAVEL SOUTHEAST ON  
BEELINE HWY FOR 6.05 MILES.  
THE WELL IS ON THE LEFT  
BY THE SIGN, ENTERING  
MARTIN COUNTY, 83.00' FT.  
NORTHEAST OF EDGE OF  
PAVEMENT, OF BEELINE HWY.

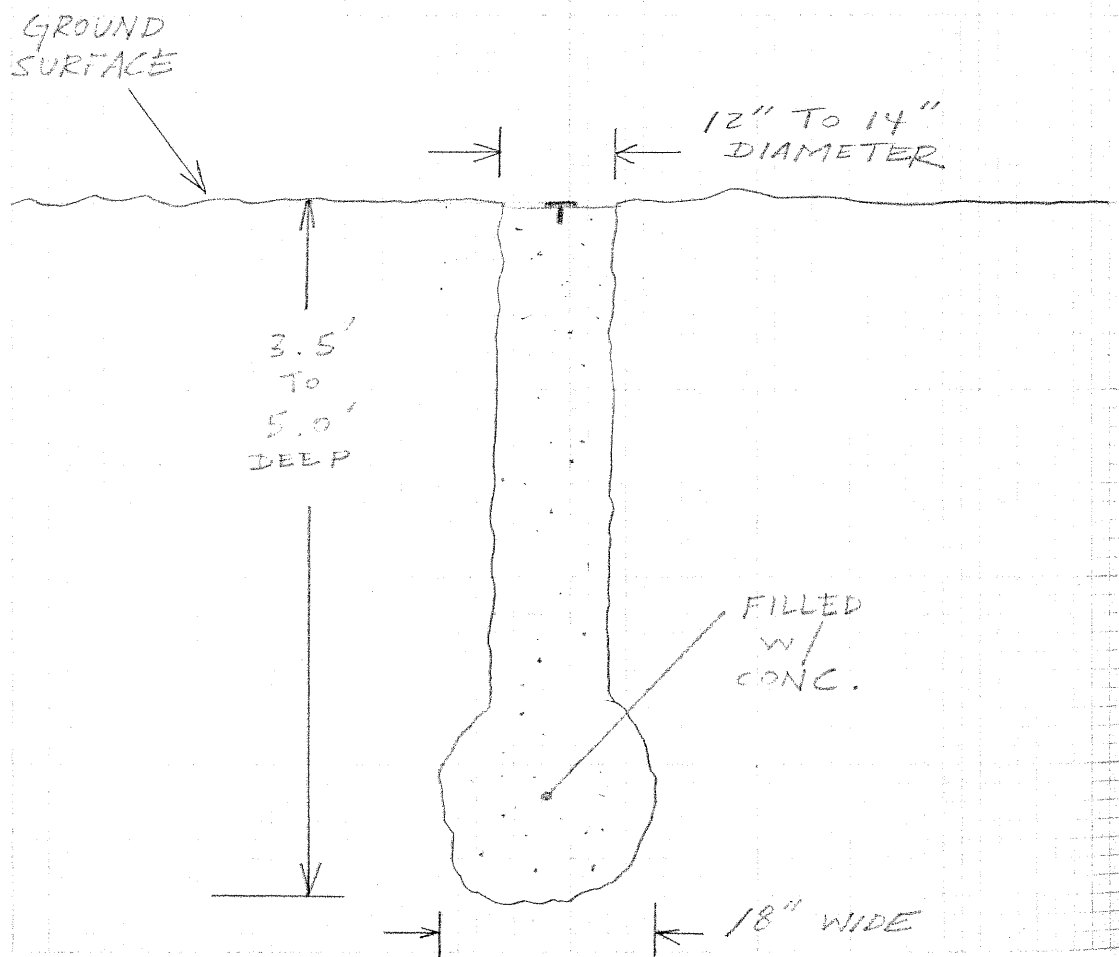


A. REDERO  
T. LOPEZ  
M. MOYA

#05-07718  
S.F.W.M.D.

9/12/05

NOTE: ALL CONCRETE MONUMENTS  
WHERE SET ACCORDING TO  
NGS STANDARDS.



From the "ngvd29.txt" file provided by NGS for the CERP Geodetic Vertical Control Project.  
 Line/Part: L26233 SSN+: mark floated, SSN\*: mark constrained, SSN#: mark floated & constrained

Mark ID	SSN	PID	Designation	Geopotential	Elevation	Codes
1686	9008	AJ5644	B 516	2.7496	2.8058	

## The NGS Data Sheet

See file [dsdata.txt](#) for more information about the datasheet.

DATABASE = Sybase ,PROGRAM = datasheet, VERSION = 7.27

1 National Geodetic Survey, Retrieval Date = SEPTEMBER 20, 2005

AJ5644 \*\*\*\*\*

AJ5644 DESIGNATION - B 516

AJ5644 PID - AJ5644

AJ5644 STATE/COUNTY- FL/MARTIN

AJ5644 USGS QUAD - JUPITER (1983)

AJ5644

AJ5644 \*CURRENT SURVEY CONTROL

AJ5644

AJ5644\* NAD 83(1986)- 26 59 08. (N) 080 07 16. (W) SCALED

AJ5644\* NAVD 88 - 2.352 (meters) 7.72 (feet) ADJUSTED

AJ5644

AJ5644 GEOID HEIGHT- -27.41 (meters) GEOID03

AJ5644 DYNAMIC HT - 2.348 (meters) 7.70 (feet) COMP

AJ5644 MODELED GRAV- 979,095.0 (mgal) NAVD 88

AJ5644

AJ5644 VERT ORDER - FIRST CLASS II

AJ5644

AJ5644.The horizontal coordinates were scaled from a topographic map and have an estimated accuracy of +/- 6 seconds.

AJ5644

AJ5644.The orthometric height was determined by differential leveling

AJ5644.and adjusted by the National Geodetic Survey in October 2001.

AJ5644.No vertical observational check was made to the station.

AJ5644

AJ5644.The geoid height was determined by GEOID03.

AJ5644

AJ5644.The dynamic height is computed by dividing the NAVD 88

AJ5644.geopotential number by the normal gravity value computed on the

AJ5644.Geodetic Reference System of 1980 (GRS 80) ellipsoid at 45

AJ5644.degrees latitude (g = 980.6199 gals.).

AJ5644

AJ5644.The modeled gravity was interpolated from observed gravity values.

AJ5644

AJ5644; North East Units Estimated Accuracy

AJ5644;SPC FL E - 294,110. 287,240. MT (+/- 180 meters Scaled)

AJ5644

AJ5644 SUPERSEDED SURVEY CONTROL

AJ5644

AJ5644.No superseded survey control is available for this station.

AJ5644

AJ5644\_U.S. NATIONAL GRID SPATIAL ADDRESS: 17RNK872851(NAD 83)

AJ5644\_MARKER: DD = SURVEY DISK

AJ5644\_SETTING: 7 = SET IN TOP OF CONCRETE MONUMENT

AJ5644\_STAMPING: B 516 2001

AJ5644\_MARK LOGO: FL-085

AJ5644\_PROJECTION: FLUSH

AJ5644\_MAGNETIC: M = MARKER EQUIPPED WITH BAR MAGNET

AJ5644\_STABILITY: C = MAY HOLD, BUT OF TYPE COMMONLY SUBJECT TO

AJ5644+STABILITY: SURFACE MOTION

AJ5644\_SATELLITE: THE SITE LOCATION WAS REPORTED AS SUITABLE FOR

AJ5644+SATELLITE: SATELLITE OBSERVATIONS - October 03, 2003

AJ5644  
AJ5644 HISTORY - Date Condition Report By  
AJ5644 HISTORY - 20010501 MONUMENTED GCYI  
AJ5644 HISTORY - 20031003 GOOD USPSQD

AJ5644  
AJ5644 STATION DESCRIPTION  
AJ5644

AJ5644'DESCRIBED BY G.C.Y., INCORPORATED 2001 (MDL)  
AJ5644'THE STATION IS LOCATED 8.5 KM (5.3 MI) SOUTH OF HOBE SOUND, 34.6 KM  
AJ5644'(21.5 MI)  
AJ5644'EAST OF INDIANTOWN AND 26.9 KM (16.7 MI) SOUTHEAST OF STUART IN  
AJ5644'SECTION 14,  
AJ5644'TOWNSHIP 40 SOUTH, RANGE 42 EAST, MARTIN COUNTY, FLORIDA.  
AJ5644'  
AJ5644'TO REACH THE STATION FROM THE INTERSECTION OF U.S. HIGHWAY 1 AND  
AJ5644'COUNTY LINE ROAD IN TEQUESTA, GO WEST ON COUNTY LINE ROAD 2.15 KM  
AJ5644'(1.34 MI)  
AJ5644'THEN TURN NORTH ON COUNTY LINE ROAD THEN WEST ON COUNTY LINE ROAD 2.7  
AJ5644'KM (1.7 MI) TO THE INTERSECTION WITH WOODBRIDGE LANE AND THE STATION  
AJ5644'ON  
AJ5644'THE RIGHT.  
AJ5644'  
AJ5644'THE STATION IS LOCATED 1.0 M (3.3 FT) SOUTH OF A CARSONITE WITNESS  
AJ5644'POST SET  
AJ5644'IN A BARBED WIRE FENCE, 7M (23 FT) SOUTHWEST OF A 10 INCH PINE TREE,  
AJ5644'11.6 M  
AJ5644'(38 FT) WEST OF A WOOD POWER POLE AND 4.4 M (14.5 FT) EAST OF A WOOD  
AJ5644'POWER POLE.  
AJ5644'  
AJ5644'NOTE - MAGNET BURIED AT NORTH SIDE OF MONUMENT.

AJ5644'  
AJ5644'  
AJ5644  
AJ5644 STATION RECOVERY (2003)  
AJ5644

AJ5644'RECOVERY NOTE BY US POWER SQUADRON 2003 (AEP)  
AJ5644'MARK IS AT INTERSECTION OF COUNTY LINE ROAD AND WOODEN BRIDGE WAY.  
AJ5644'  
AJ5644'  
AJ5644'

\*\*\* retrieval complete.  
Elapsed Time = 00:00:00

From the "ngvd29.txt" file provided by NGS for the CERP Geodetic Vertical Control Project.  
 Line/Part: L26233 SSN+: mark floated, SSN\*: mark constrained, SSN#: mark floated  
 & constrained

Mark ID	SSN	PID	Designation	Geopotential	Elevation	Codes
1684	9006	AJ5245	GCY D02	3.2186	3.2842	
1685	9007	AJ5244	GCY D01	3.4105	3.4801	

## The NGS Data Sheet

See file [dsdata.txt](#) for more information about the datasheet.

DATABASE = Sybase ,PROGRAM = datasheet, VERSION = 7.27

1 National Geodetic Survey, Retrieval Date = SEPTEMBER 20, 2005

AJ5245 \*\*\*\*\*

AJ5245 DESIGNATION - GCY D02

AJ5245 PID - AJ5245

AJ5245 STATE/COUNTY- FL/MARTIN

AJ5245 USGS QUAD - JUPITER (1983)

AJ5245

AJ5245 \*CURRENT SURVEY CONTROL

AJ5245

AJ5245\* NAD 83(1999)- 26 58 28.36610(N) 080 06 33.05005(W) ADJUSTED

AJ5245\* NAVD 88 - 2.830 (meters) 9.28 (feet) ADJUSTED

AJ5245

AJ5245 X - 977,059.668 (meters) COMP

AJ5245 Y - -5,603,600.599 (meters) COMP

AJ5245 Z - 2,875,691.177 (meters) COMP

AJ5245 LAPLACE CORR- -4.18 (seconds) DEFLEC99

AJ5245 ELLIP HEIGHT- -24.57 (meters) (09/27/01) GPS OBS

AJ5245 GEOID HEIGHT- -27.41 (meters) GEOID03

AJ5245 DYNAMIC HT - 2.826 (meters) 9.27 (feet) COMP

AJ5245 MODELED GRAV- 979,093.9 (mgal) NAVD 88

AJ5245

AJ5245 HORZ ORDER - FIRST

AJ5245 VERT ORDER - FIRST CLASS II

AJ5245 ELLP ORDER - FOURTH CLASS II

AJ5245

AJ5245.The horizontal coordinates were established by GPS observations

AJ5245.and adjusted by the National Geodetic Survey in September 2001.

AJ5245

AJ5245.The orthometric height was determined by differential leveling

AJ5245.and adjusted by the National Geodetic Survey in October 2001.

AJ5245.No vertical observational check was made to the station.

AJ5245

AJ5245.The X, Y, and Z were computed from the position and the ellipsoidal ht.

AJ5245

AJ5245.The Laplace correction was computed from DEFLEC99 derived deflections.

AJ5245

AJ5245.The ellipsoidal height was determined by GPS observations

AJ5245.and is referenced to NAD 83.

AJ5245

AJ5245.The geoid height was determined by GEOID03.

AJ5245

AJ5245.The dynamic height is computed by dividing the NAVD 88

AJ5245.geopotential number by the normal gravity value computed on the

AJ5245.Geodetic Reference System of 1980 (GRS 80) ellipsoid at 45

AJ5245.degrees latitude (g = 980.6199 gals.).

AJ5245

AJ5245.The modeled gravity was interpolated from observed gravity values.

AJ5245

AJ5245; North East Units Scale Factor Converg.

AJ5245;SPC FL E - 292,895.700 288,434.993 MT 1.00003769 +0 24 14.7

AJ5245;UTM 17 - 2,983,927.746 588,404.820 MT 0.99969648 +0 24 14.7

AJ5245

AJ5245! - Elev Factor x Scale Factor = Combined Factor  
 AJ5245!SPC FL E - 1.00000386 x 1.00003769 = 1.00004155  
 AJ5245!UTM 17 - 1.00000386 x 0.99969648 = 0.99970034  
 AJ5245  
 AJ5245: Primary Azimuth Mark Grid Az  
 AJ5245:SPC FL E - GCY D01 001 31 12.0  
 AJ5245:UTM 17 - GCY D01 001 31 12.0

AJ5245	PID	Reference Object	Distance	Geod. Az
AJ5245				ddmmss.s
AJ5245	AJ5244	GCY D01	APPROX. 0.7 KM	0015526.7

AJ5245  
 AJ5245 SUPERSEDED SURVEY CONTROL  
 AJ5245  
 AJ5245.No superseded survey control is available for this station.  
 AJ5245

AJ5245\_U.S. NATIONAL GRID SPATIAL ADDRESS: 17RNK8840583928(NAD 83)  
 AJ5245\_MARKER: DH = HORIZONTAL CONTROL DISK  
 AJ5245\_SETTING: 7 = SET IN TOP OF CONCRETE MONUMENT  
 AJ5245\_STAMPING: GCY D02 2001  
 AJ5245\_MARK LOGO: FL-085  
 AJ5245\_PROJECTION: FLUSH  
 AJ5245\_MAGNETIC: M = MARKER EQUIPPED WITH BAR MAGNET  
 AJ5245\_STABILITY: C = MAY HOLD, BUT OF TYPE COMMONLY SUBJECT TO  
 AJ5245+STABILITY: SURFACE MOTION  
 AJ5245\_SATELLITE: THE SITE LOCATION WAS REPORTED AS SUITABLE FOR  
 AJ5245+SATELLITE: SATELLITE OBSERVATIONS - October 03, 2003

AJ5245	HISTORY	Date	Condition	Report By
AJ5245	HISTORY	20010501	MONUMENTED	GCYI
AJ5245	HISTORY	20010718	GOOD	GCYI
AJ5245	HISTORY	20031003	GOOD	USPSQD

AJ5245  
 AJ5245 STATION DESCRIPTION  
 AJ5245  
 AJ5245'DESCRIBED BY G.C.Y., INCORPORATED 2001 (MDL)  
 AJ5245'STATION IS LOCATED ABOUT 5.4 KM (3.3 MI) NORTHWEST OF JUPITER AND 9.2  
 AJ5245'KM (5.7  
 AJ5245'MI) SOUTHEAST OF HOBE SOUND IN SECTION 24, TOWNSHIP 40 SOUTH, RANGE 42  
 AJ5245'EAST.  
 AJ5245'  
 AJ5245'TO REACH THE STATION FROM THE INTERSECTION OF U.S. HIGHWAY 1 AND  
 AJ5245'COUNTY LINE ROAD IN TEQUESTA, GO WEST ON COUNTY LINE ROAD 2.15 KM  
 AJ5245'(1.34 MI)  
 AJ5245'THEN TURN NORTH ON COUNTY LINE ROAD AND GO 0.43 KM (0.27 MI) TO THE  
 AJ5245'STATION ON THE LEFT.  
 AJ5245'  
 AJ5245'THE STATION IS LOCATED 9.0 M (29.6 FT) WEST OF THE WEST EDGE OF  
 AJ5245'PAVEMENT  
 AJ5245'OF COUNTY LINE ROAD AND 2.5 M (8.2 FT) SOUTH OF A CARSONITE WITNESS  
 AJ5245'POST.  
 AJ5245'REFERENCES-  
 AJ5245'GCY, INC MAG NAIL AND WASHER IN EAST SIDE OF 10 INCH PINE TREE -30  
 AJ5245'DEG. MAG.  
 AJ5245'AZ.-  
 AJ5245'13.92 M (45.58 FT)  
 AJ5245'GCY, INC MAG NAIL AND WASHER INEAST SIDE OF 8 INCH PINE TREE -145 DEG.  
 AJ5245'MAG.





From the "ngvd29.txt" file provided by NGS for the CERP Geodetic Vertical Control Project.  
 Line/Part: L26233 SSN+: mark floated, SSN\*: mark constrained, SSN#: mark floated & constrained

Mark ID	SSN	PID	Designation	Geopotential	Elevation	Codes
1684	9006	AJ5245	GCY D02	3.2186	3.2842	
1685	9007	AJ5244	GCY D01	3.4105	3.4801	

# The NGS Data Sheet

See file [dsdata.txt](#) for more information about the datasheet.

DATABASE = Sybase ,PROGRAM = datasheet, VERSION = 7.27

1 National Geodetic Survey, Retrieval Date = SEPTEMBER 20, 2005

AJ5244 \*\*\*\*\*

AJ5244 DESIGNATION - GCY D01

AJ5244 PID - AJ5244

AJ5244 STATE/COUNTY- FL/MARTIN

AJ5244 USGS QUAD - JUPITER (1983)

AJ5244

AJ5244 \*CURRENT SURVEY CONTROL

AJ5244

AJ5244\* NAD 83(1999)- 26 58 50.56217(N) 080 06 32.21778(W) ADJUSTED

AJ5244\* NAVD 88 - 3.026 (meters) 9.93 (feet) ADJUSTED

AJ5244

AJ5244 X - 977,029.071 (meters) COMP

AJ5244 Y - -5,603,291.509 (meters) COMP

AJ5244 Z - 2,876,300.082 (meters) COMP

AJ5244 LAPLACE CORR- -4.19 (seconds) DEFLEC99

AJ5244 ELLIP HEIGHT- -24.39 (meters) (09/27/01) GPS OBS

AJ5244 GEOID HEIGHT- -27.44 (meters) GEOID03

AJ5244 DYNAMIC HT - 3.022 (meters) 9.91 (feet) COMP

AJ5244 MODELED GRAV- 979,093.8 (mgal) NAVD 88

AJ5244

AJ5244 HORZ ORDER - FIRST

AJ5244 VERT ORDER - FIRST CLASS II

AJ5244 ELLP ORDER - FOURTH CLASS II

AJ5244

AJ5244.The horizontal coordinates were established by GPS observations

AJ5244.and adjusted by the National Geodetic Survey in September 2001.

AJ5244

AJ5244.The orthometric height was determined by differential leveling

AJ5244.and adjusted by the National Geodetic Survey in October 2001.

AJ5244.No vertical observational check was made to the station.

AJ5244

AJ5244.The X, Y, and Z were computed from the position and the ellipsoidal ht.

AJ5244

AJ5244.The Laplace correction was computed from DEFLEC99 derived deflections.

AJ5244

AJ5244.The ellipsoidal height was determined by GPS observations

AJ5244.and is referenced to NAD 83.

AJ5244

AJ5244.The geoid height was determined by GEOID03.

AJ5244

AJ5244.The dynamic height is computed by dividing the NAVD 88

AJ5244.geopotential number by the normal gravity value computed on the

AJ5244.Geodetic Reference System of 1980 (GRS 80) ellipsoid at 45

AJ5244.degrees latitude (g = 980.6199 gals.).

AJ5244

AJ5244.The modeled gravity was interpolated from observed gravity values.

AJ5244

AJ5244; North East Units Scale Factor Converg.

AJ5244;SPC FL E - 293,579.036 288,453.125 MT 1.00003773 +0 24 15.4

AJ5244;UTM 17 - 2,984,610.849 588,422.945 MT 0.99969652 +0 24 15.4

AJ5244

AJ5244! - Elev Factor x Scale Factor = Combined Factor  
 AJ5244!SPC FL E - 1.00000383 x 1.00003773 = 1.00004156  
 AJ5244!UTM 17 - 1.00000383 x 0.99969652 = 0.99970035

AJ5244  
 AJ5244: Primary Azimuth Mark Grid Az  
 AJ5244:SPC FL E - GCY D02 181 31 11.6  
 AJ5244:UTM 17 - GCY D02 181 31 11.6

AJ5244  
 AJ5244 |-----|  
 AJ5244 | PID Reference Object Distance Geod. Az |  
 AJ5244 | | | | dddmmss.s |  
 AJ5244 | AJ5245 GCY D02 APPROX. 0.7 KM 1815527.0 |  
 AJ5244 |-----|

AJ5244  
 AJ5244 SUPERSEDED SURVEY CONTROL  
 AJ5244  
 AJ5244.No superseded survey control is available for this station.  
 AJ5244

AJ5244\_U.S. NATIONAL GRID SPATIAL ADDRESS: 17RNK8842384611(NAD 83)  
 AJ5244\_MARKER: F = FLANGE-ENCASED ROD  
 AJ5244\_SETTING: 49 = STAINLESS STEEL ROD W/O SLEEVE (10 FT.+)  
 AJ5244\_STAMPING: GCY D01 2001  
 AJ5244\_MARK LOGO: FL-085  
 AJ5244\_PROJECTION: FLUSH  
 AJ5244\_MAGNETIC: M = MARKER EQUIPPED WITH BAR MAGNET  
 AJ5244\_STABILITY: B = PROBABLY HOLD POSITION/ELEVATION WELL  
 AJ5244\_SATELLITE: THE SITE LOCATION WAS REPORTED AS SUITABLE FOR  
 AJ5244+SATELLITE: SATELLITE OBSERVATIONS - October 03, 2003  
 AJ5244\_ROD/PIPE-DEPTH: 16.5 meters

AJ5244  
 AJ5244 HISTORY - Date Condition Report By  
 AJ5244 HISTORY - 20010510 MONUMENTED GCYI  
 AJ5244 HISTORY - 20010718 GOOD GCYI  
 AJ5244 HISTORY - 20020606 GOOD JCLS  
 AJ5244 HISTORY - 20031003 GOOD USPSQD

AJ5244  
 AJ5244 STATION DESCRIPTION  
 AJ5244  
 AJ5244'DESCRIBED BY G.C.Y., INCORPORATED 2001 (KFK)  
 AJ5244'STATION IS LOCATED ABOUT 5.4 KM (3.3 MI) NORTHWEST OF JUPITER AND 9.2  
 AJ5244'KM (5.7  
 AJ5244'MI) SOUTHEAST OF HOBE SOUND IN SECTION 24, TOWNSHIP 40 SOUTH, RANGE 42  
 AJ5244'EAST.  
 AJ5244'  
 AJ5244'TO REACH THE STATION FROM THE INTERSECTION OF U.S. HIGHWAY 1 AND  
 AJ5244'COUNTY LINE ROAD IN TEQUESTA, GO WEST ON COUNTY LINE ROAD 2.15 KM  
 AJ5244'(1.34 MI)  
 AJ5244'THEN TURN NORTH ON COUNTY LINE ROAD AND GO 1.12 KM (0.69 MI) TO THE  
 AJ5244'STATION ON THE RIGHT.  
 AJ5244'  
 AJ5244'THE STATION IS LOCATED 3.6 M (11.7 FT) EAST OF THE EAST EDGE OF  
 AJ5244'PAVEMENT OF  
 AJ5244'COUNTY LINE ROAD AND 0.4 M (1.3 FT) WEST OF A CARSONITE WITNESS POST.  
 AJ5244'IN  
 AJ5244'FRONT OF MARTIN COUNTY FIRE STATION 36 AT 18405 COUNTY LINE ROAD.  
 AJ5244'REFERENCES-  
 AJ5244'GCY, INC MAG NAIL AND WASHER IN EAST SIDE OF 14 INCH PINE TREE - 201  
 AJ5244'DEG. MAG.  
 AJ5244'AZ.,  
 AJ5244'42.12 M (138.2 FT) GCY, INC MAG NAIL AND WASHER IN SOUTH SIDE OF 12

AJ5244' INCH PINE  
AJ5244' TREE - 291 DEG. MAG. AZ., 18.78 M (61.6 FT)- GCY, INC MAG NAIL AND  
AJ5244' WASHER IN WEST  
AJ5244' SIDE OF A WOOD POWER POLE - 357 DEG. MAG. AZ. - 30.78 M (101 FT).  
AJ5244'  
AJ5244' NOTE-  
AJ5244' DEEP ONE MAGNET PLACED IN PVC ON NORTH SIDE OF STAINLESS STEEL ROD.  
AJ5244'  
AJ5244'  
AJ5244'  
AJ5244'  
AJ5244'  
AJ5244'  
AJ5244'  
AJ5244' STATION RECOVERY (2001)  
AJ5244'  
AJ5244' RECOVERY NOTE BY G.C.Y., INCORPORATED 2001 (KFK)  
AJ5244' RECOVERED AS DESCRIBED.  
AJ5244'  
AJ5244' STATION RECOVERY (2002)  
AJ5244'  
AJ5244' RECOVERY NOTE BY JOHN CHANCE LAND SURVEYS INC 2002  
AJ5244' RECOVERED IN GOOD CONDITION.  
AJ5244'  
AJ5244' STATION RECOVERY (2003)  
AJ5244'  
AJ5244' RECOVERY NOTE BY US POWER SQUADRON 2003 (AEP)  
AJ5244'  
AJ5244'  
AJ5244'

\*\*\* retrieval complete.  
Elapsed Time = 00:00:00

03-77478

## MARTIN COUNTY- WELL M1230

LEVEL RUN

DATE	STA	BS	MEAN	HI	FS	MEAN	ELEV	BM ELEV.	NOTES
								NAVD-88	
	NGS BM	4.79							
08/03/05	AJ5644	4.64	4.64	12.36				7.72	
	B 516	4.49							
					5.01				TOP OF PIPE
(FB 2548,	WELL				4.93	4.93	7.44		WELL
PG 10)	M1230				4.84				M 1230
		5.30							
	SHAKE	5.22	5.22	12.65					
		5.13							
	NGS BM				5.08				ERROR
	AJ5644				4.93	4.93	7.72	7.72	0.000
	B 516				4.78				

LEVEL RUN

DATE	STA	BS	MEAN	HI	FS	MEAN	ELEV	BM ELEV. NGVD-29	NOTES
	NGS BM	4.79							
08/03/05	AJ5644	4.64	4.64	13.85				9.21	
	B 516	4.49							
					5.01				TOP OF PIPE
(FB 2548, PG 10)	WELL M1230				4.93	4.93	8.92		WELL M 1230
		5.30							
	SHAKE	5.22	5.22	14.14					
		5.13							
	NGS BM				5.08				ERROR
	AJ5644				4.93	4.93	9.21	9.21	0.000
	B 516				4.78				