

MARTIN CO WELLS FB# 6 12/07/88

TIE TO MARTIN CO WELL # 1254

IN SEC 22 TWP 37 RGE 41

STA	+	H I	-	ELEV	BM ELEV
BM					18.10

3.37	21.47
3.89	

WELL		5.77	15.70	15.70
		1.49		

RETURN LEVELS

WELL M 1254			15.70	
-------------	--	--	-------	--

5.52	21.22
1.74	

BM		3.12	18.10	18.10
		4.14		

MARTIN CO WELLS FB# 6 12/07/88

MS

S

COMMENTS

BM SAVANNA RD #1 SEE PG-2

MARTIN CO. WELL # 1254 TOP + N SIDE OF A 2" PVC. WELL W/  
 CONC. COLLAR. ELEV. IS A "X" MARK PAINTED ORANGE AND IS 0.20'  
 ABOVE THE LEVEL OF THE GRND (SAND) AND (HILLY)  
 SEE PG-2 FOR SKETCH. WELL IS 37.0' EAST OF C OF SAVANNA  
 RD + 28.5' N.N.W. OF A 18" SLASH PINE + 500.0' +/- N. OF  
 C-707A

BM SAVANNA RD #1 SEE PG-2



MARTIN CO. WELLS LEVELS B.#6 12/07/88

LEVELS TO USGS MONITORING WELLS IN MARTIN CO  
 FOR KARIN M. ADAMS, (HYDROGEOLOGY DIVISION)  
 THERE ARE 47 SITES AND A TOTAL OF 65 WELLS

STA + HI - ELEV BM ELEV

SEC 15 TWP 37 RGE 41

BM 79.95

1.55  
5.71 81.50

TP 12.68  
0.58 68.82

1.42  
5.84 70.24

TP 8.54  
4.72 61.70

2.65  
4.61 64.35

TP 10.62  
2.65 53.73

0.54  
6.72 54.27

TP 7.74  
5.53 46.53

1.91  
5.35 48.44

TP 5.17  
2.09 43.27

1.90  
5.36 45.17

CONT'D ON PG-2

MARTIN CO. WELLS LEVELS B.#6

12/07/88

MS 1

COMMENTS

USCGS (NGS) MON CEMETERY 1934 IN GOOD CONDITION  
 RECOVERED AS DESCRIBED ELEV 79.951



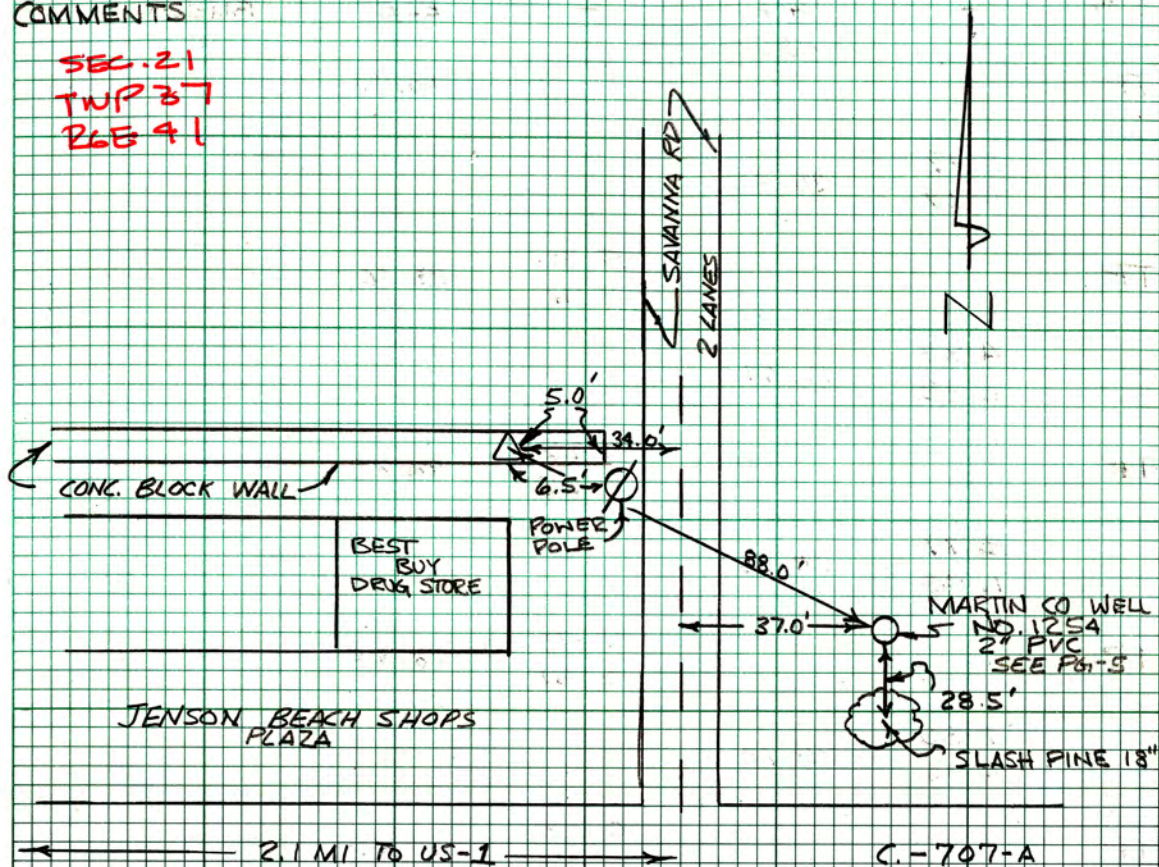
CONT'D FROM PG-1

STA	+	HI	-	ELEV	BMELEV
TP		45.17	4.46 2.80	40.71	
	0.12 7.14	40.83			
TP			5.13 2.14	35.70	
	0.37 6.89	36.07			
TP			11.58 1.68	24.49	
	0.71 6.55	25.20			
TP			6.32 0.94	18.88	
	1.36 5.90	20.24			
TP			5.27 1.99	14.97	
	4.63 2.63	19.60			
TP			4.88 2.38	14.72	
	5.29 1.98	20.01			
BM			1.91 5.35	18.10	

RETURN LEVELS ON PG-3

COMMENTS

SEC. 21  
TWP 37  
R6E 41



BM SAVANNA RD. #1 SET S.F.W.M.D. ALUM. DISK IN TOP OF CONC. BLOCK WALL 5.0' W. OF EAST END OF WALL ON SAVANNA RD, 0.1 MI N. OF COUNTY RD 707A, 2.1 MI EAST OF US. 1 BM IS 34.0' WEST OF THE C. OF SAVANNA RD, 6.5' W.N.W. OF A WOOD POWER POLE 272 AND 88.0' N.W. OF MARTIN CO WELL # 1254 SEE PG-5



RETURN LEVELS FROM PG-2

STA	+	HI	-	ELEV	BM/ELEV
-----	---	----	---	------	---------

BM				18.10	-
	1.97	20.07			
	5.29				
TP			5.35	19.72	
			1.91		
	4.94	19.66			
	2.32				
TP			4.69	14.97	
			2.57		
	5.36	20.33			
	1.90				
TP			1.45	18.88	
			5.81		
	6.30	25.18			
	0.96				
TP			0.69	24.49	
			6.57		
	11.61	36.10			
	1.65				
TP			0.42	35.68	
			6.84		
	5.16	40.84			
	2.10				
TP			3.41	37.43	
X			3.85		
	7.10	44.53			
	0.16				

CONT'D ON PG-4

COMMENTS

SAVANNA RD #1 SEE PG-2



CONT'D FROM PG. -3

STA	+	H I	-	ELEV	BNELEV
		44.53	1.27	43.26	
TP			5.99		
	5.39	48.65			
	1.87				
TP			2.49	46.16	
			4.77		
	8.49	54.65			
	4.78				
TP			0.93	53.72	
			6.33		
	10.68	64.40			
	2.58				
TP			2.71	61.69	
			4.55		
	8.50	70.19			
	4.76				
TP			1.38	63.81	
			5.88		
	13.17	81.98			
	0.09				
BM			2.04	79.94	79.95
			5.22		

COMMENTS

USCGS (NGS) MON. CEMETERY 1934 SEE PG - 1 ELEV 79.951



MARTIN CO WELLS FB# 6 12/07/88

TIE TO MARTIN CO WELL # 1254

IN SEC 22 TWP 37 RGE 41

STA	+	H I	-	ELEV	BM ELEV
BM					18.10

3.37	21.47
3.89	

WELL	5.77	15.70	15.70
	1.49		

RETURN LEVELS

WELL M 1254	15.70
-------------	-------

5.52	21.22
1.74	

BM	3.12	18.10	18.10
	4.14		

MARTIN CO WELLS FB# 6 12/07/88

MS

5

COMMENTS

BM SAVANNA RD #1 SEE PG-2

MARTIN CO. WELL # 1254 TOP + N SIDE OF A 2" PVC. WELL W/ CONC. COLLAR. ELEV. IS A "X" MARK PAINTED ORANGE AND IS 0.20' ABOVE THE LEVEL OF THE GRND (SAND) AND (HILLY)

SEE PG-2 FOR SKETCH. WELL IS 37.0' EAST OF C OF SAVANNA RD + 28.5' N.N.W. OF A 18" SLASH PINE + 500.0' +/- N. OF C-707A

BM SAVANNA RD #1 SEE PG-2



## Survey Monument BenchMark Database Search

Designation	Savannard1	Latitude	
County	Martin	Longitude	
Quad		Monument	Sfwmd
Project	Martin county wells	Year Set	1988
S/T/R	21    37    41	Type	V
Status		Stamping	
<b>NAD 1927</b>		Party Chief	Art hollin
N:		FB	Mcs6
E:		Pg	2
Adjustment		<b>NGVD 1929</b>	
<b>NAD 1983</b>		Elevation	18.1
N:		Order	3
E:		Class	
Adjustment		<b>NAVD 1988</b>	
Order		Elevation	
Class		Order	
		Class	

[Back](#)

TO REACH: FROM THE INTERSECTION OF UNITED STATES 1 AND COUNTY ROAD 707A, PROCEED EAST ALONG SAID CR 707A A DISTANCE OF 2.1 MILES TO SAVANNA ROAD; THENCE NORTH ON SAVANNA ROAD 0.1 MILE TO STATION LOCATION ON THE LEFT. STATION SAVANNA ROAD#1 IS A SFWMD ALUMINUM DISK IN THE TOP OF A CONCRETE BLOCK WALL, 5.0 FEET WEST OF THE EAST END OF A WALL NORTH OF BEST BUY DRUG STORE AND WEST OF SAVANNA ROAD. BENCH MARK IS 34.0 FEET WEST OF THE CENTER LINE OF SAVANNA ROAD, 6.5 FEET WEST NORTHWEST OF A WOOD POWER POLE 272 AND 88.0 FEET NORTHWEST OF MARTIN COUNTY WELL # 1254 .

# The NGS Data Sheet

See file [dsdata.txt](#) for more information about the datasheet.

```

PROGRAM = datasheet95, VERSION = 8.8
1      National Geodetic Survey,      Retrieval Date = OCTOBER 14, 2015
AF3171 *****
AF3171 DESIGNATION - CEMETERY RESET
AF3171 PID - AF3171
AF3171 STATE/COUNTY- FL/MARTIN
AF3171 COUNTRY - US
AF3171 USGS QUAD - EDEN (1983)
AF3171
AF3171 *CURRENT SURVEY CONTROL
AF3171
AF3171* NAD 83(1990) POSITION- 27 15 09.28055(N) 080 13 59.42955(W) ADJUSTED
AF3171* NAVD 88 ORTHO HEIGHT - 23.921 (meters) 78.48 (feet) ADJUSTED
AF3171
AF3171 LAPLACE CORR - -2.89 (seconds) DEFLECI2B
AF3171 GEOID HEIGHT - -27.603 (meters) GEOID12B
AF3171 DYNAMIC HEIGHT - 23.885 (meters) 78.36 (feet) COMP
AF3171 MODELED GRAVITY - 979,124.3 (mgal) NAVD 88
AF3171
AF3171 HORZ ORDER - SECOND
AF3171 VERT ORDER - FIRST CLASS I
AF3171
AF3171.The horizontal coordinates were established by classical geodetic methods
AF3171.and adjusted by the National Geodetic Survey in May 1991.
AF3171.
AF3171.The orthometric height was determined by differential leveling and
AF3171.adjusted by the NATIONAL GEODETIC SURVEY
AF3171.in June 1991.
AF3171
AF3171.Significant digits in the geoid height do not necessarily reflect accuracy.
AF3171.GEOID12B height accuracy estimate available here.
AF3171
AF3171.The Laplace correction was computed from DEFLECI2B derived deflections.
AF3171
AF3171.The dynamic height is computed by dividing the NAVD 88
AF3171.geopotential number by the normal gravity value computed on the
AF3171.Geodetic Reference System of 1980 (GRS 80) ellipsoid at 45
AF3171.degrees latitude (g = 980.6199 gals.).
AF3171
AF3171.The modeled gravity was interpolated from observed gravity values.
AF3171
AF3171. The following values were computed from the NAD 83(1990) position.
AF3171
AF3171; North East Units Scale Factor Converg.
AF3171;SPC FL E - 323,622.134 275,937.217 MT 1.00001233 +0 21 04.2
AF3171;SPC FL E - 1,061,750.28 905,304.02 sFT 1.00001233 +0 21 04.2
AF3171;UTM 17 - 3,014,643.697 575,911.308 MT 0.99967113 +0 21 04.2
AF3171
AF3171! - Elev Factor x Scale Factor = Combined Factor
AF3171!SPC FL E - 1.00000058 x 1.00001233 = 1.00001291
AF3171!UTM 17 - 1.00000058 x 0.99967113 = 0.99967171
AF3171
AF3171: Primary Azimuth Mark Grid Az
AF3171:SPC FL E - CEMETERY RM 2 AZIMUTH 264 21 36.8
AF3171:UTM 17 - CEMETERY RM 2 AZIMUTH 264 21 36.8
AF3171
AF3171|-----|

```



AF3171	PID	Reference Object	Distance	Geod. Az
AF3171				ddmmss.s
AF3171	AF0121	DRAWBRIDGE HOUSE	APPROX. 1.4 KM	0870650.6
AF3171	AF0160	COAST GUARD FLAGPOLE REFUGE	APPROX. 8.9 KM	1311640.0
AF3171	DE4154	CEMETERY RM OLD	9.830 METERS	15911
AF3171	DE4150	CEMETERY RM	9.815 METERS	15913
AF3171	AF0179	PORT SEWALL TANK	APPROX. 9.1 KM	1600353.4
AF3171	AF0194	STUART TANK	APPROX. 6.5 KM	1953548.5
AF3171	AF3173	CEMETERY RM 1	17.266 METERS	22635
AF3171	DE4152	CEMETERY RM 4	29.686 METERS	23845
AF3171	DE4151	CEMETERY RM 2 AZIMUTH		2644241.0
AF3171	DE4153	CEMETERY RM 5	21.709 METERS	30843
AF3171	AF3172	CEMETERY RM 3	16.548 METERS	34146

AF3171|-----|

AF3171

SUPERSEDED SURVEY CONTROL

AF3171

AF3171 NAD 83 (1986) - 27 15 09.28843 (N) 080 13 59.44217 (W) AD ( ) 2

AF3171 NAD 27 - 27 15 08.12252 (N) 080 14 00.26996 (W) AD ( ) 2

AF3171 USSD - 27 15 08.93000 (N) 080 14 00.30100 (W) AD ( ) 3

AF3171 NGVD 29 (??/??/92) 24.369 (m) 79.95 (f) ADJ UNCH 1 1

AF3171

AF3171.Superseded values are not recommended for survey control.

AF3171

AF3171.NGS no longer adjusts projects to the NAD 27 or NGVD 29 datums.

AF3171.[See file dsdata.txt](#) to determine how the superseded data were derived.

AF3171

AF3171\_U.S. NATIONAL GRID SPATIAL ADDRESS: 17RNL7591114643 (NAD 83)

AF3171

AF3171\_MARKER: DB = BENCH MARK DISK

AF3171\_SETTING: 7 = SET IN TOP OF CONCRETE MONUMENT

AF3171\_STAMPING: CEMETERY 1906 1934

AF3171\_PROJECTION: PROJECTING 13 CENTIMETERS

AF3171\_STABILITY: C = MAY HOLD, BUT OF TYPE COMMONLY SUBJECT TO

AF3171+STABILITY: SURFACE MOTION

AF3171

HISTORY	- Date	Condition	Report By
HISTORY	- 1934	MONUMENTED	CGS
HISTORY	- 1942	GOOD	CGS
HISTORY	- 1946	GOOD	CGS
HISTORY	- 1947	GOOD	CGS
HISTORY	- 1962	GOOD	CGS
HISTORY	- 1965	GOOD	CGS
HISTORY	- 1965	GOOD	CGS
HISTORY	- 1967	GOOD	CGS
HISTORY	- 1970	GOOD	NGS
HISTORY	- 1972	GOOD	NGS
HISTORY	- 1972	GOOD	NGS
HISTORY	- 1984	GOOD	USPSQD
HISTORY	- 1989	GOOD	USPSQD
HISTORY	- 1991	GOOD	USPSQD

AF3171

STATION DESCRIPTION

AF3171

AF3171'DESCRIBED BY COAST AND GEODETIC SURVEY 1934 (JB)

AF3171'THE ORIGINAL DESCRIPTION IS NO LONGER ADEQUATE SO A NEW DESCRIPTION

AF3171'FOLLOWS. SOME OF THE ADDITIONS MADE BY C.A.E. IN 1930 WERE

AF3171'CHECKED AND FOUND TO BE CORRECT.

AF3171'

AF3171'THE STATION MARK AND THE ORIGINAL REFERENCE MARK WERE FOUND IN

AF3171'GOOD CONDITION AND THE DISTANCE TO THE ORIGINAL REFERENCE MARK

AF3171'CHECKED. THE REFERENCE MARK SET BY C.A.E. IN 1930 WAS FOUND IN

AF3171'GOOD CONDITION AND THE DISTANCE MEASURED.

AF3171'

AF3171'THIS SECOND-ORDER STATION IS ON THE HIGHEST POINT OF THE FIRST

AF3171'RIDGE W OF THE INDIAN RIVER, ABOUT 1/2 MILE NW OF THE VILLAGE OF



AF3171'JENSEN ON THE FLORIDA EAST COAST RAILWAY, AND 1/2 MILE N OF A  
AF3171'PAVED ROAD WHICH RUNS W FROM JENSEN TO U.S. HIGHWAY 1. THE TOP  
AF3171'OF THE HILL IS ALMOST BARE EXCEPT FOR SEVERAL PALM TREES, AND  
AF3171'THERE IS NOT MUCH TRACE OF THE CEMETERY MENTIONED IN THE  
AF3171'ORIGINAL DESCRIPTION. IT IS ABOUT 120 METERS N OF TWO  
AF3171'SHACKS, 18.45 METERS NW OF THE NW CORNER OF A GRAVE TOP,  
AF3171'CONCRETE AND STEEL, MARKED HARDEE, AND 5.8 METERS E OF A  
AF3171'PALMETTO.

AF3171'

AF3171'THE ORIGINAL STATION MARK WAS REMOVED AND A NEW CONCRETE MARK  
AF3171'SET IN ITS PLACE, AND TWO NEW REFERENCE MARKS WERE ESTABLISHED.  
AF3171'

AF3171'THE NEW SURFACE, UNDERGROUND, AND REFERENCE MARKS ARE STANDARD  
AF3171'BRONZE DISKS SET IN CONCRETE.

AF3171'

AF3171'THE ORIGINAL REFERENCE MARK, REFERENCE MARK NO. 1, IS A HOLLOW  
AF3171'TILE PIPE PROJECTING ABOUT 5 INCHES AND IS STAMPED 1906, 1930, AND  
AF3171'1934. REFERENCE MARKS NO. 2 AND NO. 3, THE NEW ONES, ARE STAMPED  
AF3171'1906 AND 1934. THE STATION MARK IS STAMPED 1906 AND 1934.

AF3171'

AF3171'REFERENCE MARK NO. 2, (AZIMUTH MARK), IS APPROXIMATELY 0.2 MILE  
AF3171'W OF THE STATION, 10 PACES W OF A 6-INCH PINE TREE, 7 PACES E OF  
AF3171'THE CENTER LINE OF THE SANDY ROAD RUNNING N AND S ON THE W SIDE  
AF3171'OF THE RIDGE, AND 35 PACES NE OF THE NE CORNER OF A NEGRO SHACK.

AF3171'

AF3171'TO REACH THE STATION FROM FORT PIERCE, GO S FROM THE TRAFFIC  
AF3171'LIGHT FOR 15.3 MILES TO A PAVED T-ROAD E TO JENSEN. TURN LEFT ON  
AF3171'THIS ROAD AND FOLLOW IT 2.2 MILES TO A SANDY T-ROAD TO THE N. TURN  
AF3171'N ON THIS ROAD 0.5 MILE TO A SANDY TRAIL TO THE E. TAKE THIS  
AF3171'TRAIL E 0.2 MILE TO THE TOP OF THE RIDGE AND THE TWO SHACKS  
AF3171'AT THE END OF THE TRAIL.

AF3171'

AF3171'A 7-FOOT TOWER WAS USED AT THIS STATION CLEARED ALL LINES.

AF3171

AF3171

STATION RECOVERY (1942)

AF3171

AF3171'RECOVERY NOTE BY COAST AND GEODETIC SURVEY 1942 (KGC)

AF3171'THE FOLLOWING DISCREPANCIES WERE NOTED IN THE FIELD--

AF3171'

AF3171'1. DESCRIPTION FOR REACHING THE STATION WAS REWRITTEN FROM  
AF3171'STUART, INSTEAD OF FT. PIERCE.

AF3171'

AF3171'2. DISTANCE TO REFERENCE MARK NO. 3 WAS FOUND TO BE 16.60  
AF3171'METERS, INSTEAD OF 16.531 METERS.

AF3171'

AF3171'3. NO STAMPING WAS FOUND ON THE ORIGINAL REFERENCE MARK OF  
AF3171'HOLLOW TILE, INSTEAD OF THE STAMPING AS MENTIONED OF 1906, 1930  
AF3171'AND 1934.

AF3171'

AF3171'THE NEW DESCRIPTION FOLLOWS--

AF3171'

AF3171'THE STATION IS ON THE HIGHEST POINT OF THE FIRST RIDGE W OF  
AF3171'INDIAN RIVER, ABOUT 1/2 MILE NW OF THE VILLAGE OF JENSEN, ON THE  
AF3171'FLORIDA EAST COAST RAILWAY, AND 1/2 MILE N OF THE PAVED ROAD WHICH  
AF3171'RUNS W FROM JENSEN TO U.S. HIGHWAY 1. THE TOP OF THE HILL IS  
AF3171'ALMOST BARE EXCEPT FOR SEVERAL PALM TREES, AND THERE IS TRACE  
AF3171'ONLY, OF SEVERAL GRAVES IN THE VICINITY, ON THE HILL TOP. IT IS  
AF3171'ABOUT 120 METERS N OF TWO SHACKS, 18.45 METERS NW OF THE  
AF3171'NW CORNER OF A GRAVE TOP, CONCRETE AND STEEL, MARKED HARDEE, AND  
AF3171'5.8 METERS E OF A PALMETTO.

AF3171'

AF3171'CEMETERY, 1906 - 1934, IS A BRONZE DISK, STAMPED AS NAMED, SET  
AF3171'IN THE TOP OF AN 8-INCH CONCRETE POST EXTENDING 6 INCHES ABOVE  
AF3171'THE GROUND.

AF3171'

AF3171'CEMETERY, REFERENCE MARK, 1906 IS A HOLLOW 4-INCH TILE EXTENDING



AF3171'5 INCHES ABOVE THE GROUND AND IS AN ORIGINAL REFERENCE MARK SET  
AF3171'IN 1906, AND NO STAMPING IS ON THE TILE PIPE.

AF3171'

AF3171'CEMETERY, REFERENCE MARK NO. 2, 1906-1934, IS A BRONZE DISK,  
AF3171'STAMPED AS NAMED, AND IS THE AZIMUTH MARK. IT IS ABOUT 0.2 MILE  
AF3171'W OF THE STATION, ABOUT 125 FEET NE OF THE NE CORNER OF A SMALL  
AF3171'HOUSE, 100 FEET N OF THE CENTER LINE OF A T-INTERSECTION OF  
AF3171'A TRAIL TO THE E, 21 FEET E OF THE CENTER LINE OF A SAND ROAD.

AF3171'

AF3171'CEMETERY, REFERENCE MARK NO. 3, 1906-1934, IS A BRONZE DISK,  
AF3171'STAMPED AS NAMED, SET IN THE TOP OF AN 8-INCH SQUARE CONCRETE  
AF3171'POST, EXTENDING 4 INCHES ABOVE THE GROUND.

AF3171'

AF3171'A NEW SUBSURFACE MARK WAS SET IN 1934,  
AF3171'NOT VERIFIED BY THIS PARTY.

AF3171

AF3171

STATION RECOVERY (1946)

AF3171

AF3171'RECOVERY NOTE BY COAST AND GEODETIC SURVEY 1946 (FRG)

AF3171'THE STATION WAS RECOVERED AS DESCRIBED BY J.S. BILBY, JR., IN  
AF3171'1934. ALL CONCRETE MARKS WERE FOUND TO BE IN GOOD CONDITION. THE  
AF3171'DISTANCES TO REFERENCE MARKS 1 AND 3 WERE CHECKED AND FOUND TO BE  
AF3171'CORRECT. THE OLD PIPE REFERENCE MARK HAS BEEN DESTROYED. A  
AF3171'NUMBER OF CHANGES AT THE STATION SITE WERE FOUND AND A NEW  
AF3171'DESCRIPTION FOLLOWS--

AF3171'

AF3171'THE STATION IS ON THE HIGHEST POINT OF THE FIRST RIDGE W OF  
AF3171'THE INDIAN RIVER, ABOUT 0.5 MILE NW OF THE VILLAGE OF JENSEN ON  
AF3171'THE FLORIDA EAST COAST RAILROAD, AND 0.5 MILE N OF A PAVED ROAD  
AF3171'WHICH RUNS W FROM JENSEN TO U.S. HIGHWAY 1. THE STATION IS ON  
AF3171'THE PROPERTY OF MR. SEYMORE GIDDON. THE TOP OF THE HILL IS  
AF3171'ALMOST BARE EXCEPT FOR SEVERAL PALM TREES AND A NEW SMALL  
AF3171'CONCRETE BLOCK PUMPHOUSE. THE STATION IS 13 FEET NE OF THE NW  
AF3171'CORNER OF THE CONCRETE PUMPHOUSE AND 12 FEET NW OF THE NE  
AF3171'CORNER OF THE CONCRETE PUMPHOUSE. THE MARK IS A BRONZE  
AF3171'STATION DISK SET IN A CONCRETE MONUMENT STAMPED CEMETERY 1906  
AF3171'1934 AND PROJECTS ABOUT 6 INCHES.

AF3171'

AF3171'REFERENCE MARK 1 IS 56.44 FEET SW OF THE STATION, 37 FEET SW OF  
AF3171'THE SW CORNER OF THE PUMPHOUSE, AND 18 FEET S OF A PALM TREE. THE  
AF3171'MARK IS A BRONZE REFERENCE DISK SET IN A 12-INCH SQUARE CONCRETE  
AF3171'BLOCK AND STAMPED CEMETERY 1906 1930 NO 1 1934.

AF3171'

AF3171'REFERENCE MARK 2 (AZIMUTH MARK) IS ABOUT 0.2 MILE W OF THE STATION  
AF3171'ON THE E SIDE OF THE ROAD. IT IS 20 FEET E OF THE CENTER LINE OF  
AF3171'THE ROAD AND 12 FEET NE OF A PALM TREE. THE MARK IS A BRONZE  
AF3171'REFERENCE DISK SET IN A 12-INCH SQUARE BLOCK OF CONCRETE AND IS  
AF3171'STAMPED CEMETERY NO 2 1906 1934. THE MARK PROJECTS ABOUT 6  
AF3171'INCHES.

AF3171'

AF3171'REFERENCE MARK 3 IS 54.24 FEET NW OF THE STATION, 64 FEET NW OF  
AF3171'THE NW CORNER OF THE PUMPHOUSE, AND 55 FEET NE OF A PALM  
AF3171'TREE. THE MARK IS A BRONZE REFERENCE DISK SET IN CONCRETE AND  
AF3171'IS STAMPED CEMETERY NO 3 1906 1934. THE MARK PROJECTS 6 INCHES.

AF3171'

AF3171'TO REACH THE STATION FROM THE RAILROAD STATION IN JENSEN, GO N  
AF3171'AND W ON PAVED ROAD 0.7 MILE TO A SAND CROSSROAD AND A STUCCO  
AF3171'HOUSE ON THE NW CORNER, TURN RIGHT ON SAND ROAD AND GO N 0.5  
AF3171'MILE TO A SANDY TRAIL E AND THE AZIMUTH MARK. TURN RIGHT AND GO  
AF3171'E ABOUT 0.2 MILE TO TOP OF RIDGE TO A CONCRETE PUMPHOUSE AND  
AF3171'STATION.

AF3171

AF3171

STATION RECOVERY (1947)

AF3171

AF3171'RECOVERY NOTE BY COAST AND GEODETIC SURVEY 1947 (RAG)

AF3171'STATION AND REFERENCE MARKS FOUND IN GOOD CONDITION. DISTANCES



AF3171'FROM STATION TO REFERENCE MARKS WERE MEASURED AND CHECKED. THE  
AF3171'1942 DESCRIPTION IS ADEQUATE EXCEPT THE FOLLOWING ADDITION IS  
AF3171'SUGGESTED--A SMALL ROOFED CONCRETE RESERVOIR HAS BEEN BUILT ON  
AF3171'THE HILL AND THE STATION IS ABOUT 8.5 FEET N OF THIS BUILDING.

AF3171

AF3171

STATION RECOVERY (1962)

AF3171

AF3171'RECOVERY NOTE BY COAST AND GEODETIC SURVEY 1962 (VRS)

AF3171'THE SURFACE STATION MARK AND REFERENCE MARKS WERE RECOVERED IN  
AF3171'GOOD CONDITION. DISTANCES TO THE REFERENCE MARKS WERE NOT CHECKED.

AF3171'

AF3171'THE STATION IS LOCATED IN THE SKYLINE PARK SUBDIVISION, ON THE  
AF3171'HIGHEST POINT OF THE FIRST RIDGE WEST OF THE INDIAN RIVER, ABOUT  
AF3171'0.5 MILE NORTHWEST OF JENSEN BEACH, ON THE EAST SIDE OF SKYLINE  
AF3171'DRIVE ON PROPERTY OF SEYMORE GIDDON. IT IS 103 FEET EAST OF THE  
AF3171'CENTER OF SKYLINE DRIVE, 13 FEET NORTHEAST OF THE NORTHWEST  
AF3171'CORNER AND 12 FEET NORTHWEST OF THE NORTHEAST CORNER OF A  
AF3171'CONCRETE PUMP HOUSE.

AF3171'

AF3171'TO REACH THE STATION FROM THE INTERSECTION OF COMMERCIAL STREET  
AF3171'AND SKYLINE DRIVE IN JENSEN BEACH, GO NORTH ON SKYLINE DRIVE FOR  
AF3171'0.6 MILE TO THE TOP OF A HILL, A NEW CHURCH ON THE LEFT AND THE  
AF3171'STATION ON THE RIGHT.

AF3171'

AF3171'THE STATION MARK IS A STANDARD BRONZE DISK STAMPED CEMETERY  
AF3171'1906 1934, SET IN THE TOP OF A CONCRETE MONUMENT PROJECTING ABOUT  
AF3171'6 INCHES ABOVE GROUND.

AF3171'

AF3171'REFERENCE MARK 1 IS A STANDARD BRONZE DISK STAMPED CEMETERY NO  
AF3171'1 1934, SET IN THE TOP OF A CONCRETE MONUMENT FLUSH WITH THE  
AF3171'GROUND 37 FEET SOUTHWEST OF THE SOUTHWEST CORNER OF THE PUMP  
AF3171'HOUSE.

AF3171'

AF3171'REFERENCE MARK 2 (AZIMUTH MARK) IS ABOUT 0.2 MILE WEST OF THE  
AF3171'STATION ON THE EAST SIDE OF NORTH SAVANNAH ROAD. IT IS A  
AF3171'STANDARD DISK, STAMPED CEMETERY NO 2 1906 1934, SET IN THE TOP  
AF3171'OF A CONCRETE POST PROJECTING ABOUT 2 INCHES, 21 FEET EAST OF THE  
AF3171'CENTER OF SAVANNAH ROAD, 16 FEET NORTH OF A FENCE AND 2 FEET  
AF3171'NORTH OF A WITNESS SIGN.

AF3171'

AF3171'REFERENCE MARK 3 IS A STANDARD BRONZE DISK STAMPED CEMETERY NO  
AF3171'3 1906 1934, SET IN THE TOP OF A CONCRETE POST PROJECTING ABOUT  
AF3171'1 INCH, 82 FEET EAST OF THE CENTER OF SKYLINE DRIVE, 33 FEET  
AF3171'SOUTH OF A POWER POLE AND 64 FEET NORTHWEST OF THE NORTHWEST  
AF3171'CORNER OF THE POWER HOUSE.

AF3171'

AF3171'TO REACH THE AZIMUTH MARK (REFERENCE MARK 2) FROM THE  
AF3171'INTERSECTION OF COMMERCIAL STREET AND NORTH SAVANNAH ROAD ABOUT  
AF3171'0.5 MILE WEST OF THE RAILROAD STATION IN JENSEN BEACH, GO NORTH  
AF3171'ON NORTH SAVANNAH ROAD TO THE TOP OF A HILL AND THE MARK ON THE  
AF3171'RIGHT.

AF3171

AF3171

STATION RECOVERY (1965)

AF3171

AF3171'RECOVERY NOTE BY COAST AND GEODETIC SURVEY 1965 (RRG)

AF3171'THE STATION AND REFERENCE MARK NO. 2 AND 3 WERE RECOVERED AND IN  
AF3171'GOOD CONDITION. REFERENCE MARK NO. 1 WAS RECOVERED BUT IS  
AF3171'LEANING TO THE SOUTHWEST AND WAS NOT INCLUDED IN THE LEVELING.

AF3171'

AF3171'THE STATION MAY BE REACHED FROM THE SMALL VILLAGE OF JENSEN  
AF3171'BEACH (POST OFFICE) BY GOING 0.15 MILE WEST ALONG COMMERCIAL  
AF3171'STREET TO THE INTERSECTION OF SKYLINE DRIVE, THENCE NORTH FOR  
AF3171'0.7 MILE ALONG SKYLINE DRIVE TO THE SUMMIT OF A SHORT STEEP HILL,  
AF3171'THENCE 101 FEET EAST TO STATION SITE, 65 YARDS EAST OF AND ACROSS  
AF3171'SKYLINE DRIVE FROM THE JENSEN BEACH COMMUNITY CHURCH, 13.4 FEET  
AF3171'NORTHWEST OF THE NORTHEAST CORNER OF AN 11 FOOT SQUARE CONCRETE



AF3171'BUILDING, 1.4 FEET WEST OF A METAL WITNESS POST, SET IN THE  
AF3171'TOP OF A CONCRETE POST PROJECTING 4 INCHES ABOVE THE LEVEL OF  
AF3171'THE GROUND. IT IS STAMPED CEMETERY 1906 1934.

AF3171'

AF3171'REFERENCE MARK NO. 2 IS 0.2 MILE WEST OF THE STATION, ABOUT 0.15  
AF3171'MILE EAST OF THE SOUTH END OF THE JENSEN BEACH COMMUNITY CHURCH,  
AF3171'45 FEET SOUTHEAST OF AND ACROSS ROAD FROM A POWER LINE POLE, 16  
AF3171'FEET NORTH OF AN OLD FENCE LINE, 1.4 FEET NORTH OF A METAL  
AF3171'WITNESS POST, ABOUT 0.5 MILE NORTH ALONG SAVANNAH ROAD FROM ITS  
AF3171'JUNCTION WITH STATE HIGHWAY 707, 20-1/2 FEET EAST OF THE CENTER  
AF3171'LINE OF ROAD AND SET IN THE TOP OF A CONCRETE POST PROJECTING 1  
AF3171'INCH ABOVE THE LEVEL OF THE GROUND. IT IS STAMPED CEMETERY NO  
AF3171'2 1906 1934.

AF3171'

AF3171'REFERENCE MARK NO. 3 IS 54.2 FEET NORTH-NORTHWEST OF THE STATION,  
AF3171'ABOUT 63 YARDS EAST OF AND ACROSS SKYLINE DRIVE FROM THE JENSEN  
AF3171'BEACH COMMUNITY CHURCH, 49 FEET SOUTH OF THE SOUTHWEST CORNER OF  
AF3171'A STUCCO HOUSE, ABOUT LEVEL WITH SKYLINE DRIVE AND SET IN THE TOP  
AF3171'OF A CONCRETE POST PROJECTING 1 INCH ABOVE THE LEVEL OF THE  
AF3171'GROUND. IT IS STAMPED CEMETERY NO 3 1906 1934.

AF3171

STATION RECOVERY (1965)

AF3171

AF3171'RECOVERY NOTE BY COAST AND GEODETIC SURVEY 1965  
AF3171'5.4 MI N FROM STUART.

AF3171'ABOUT 4.6 MILES NORTH ALONG THE FLORIDA EAST COAST RAILWAY FROM  
AF3171'THE STATION AT STUART, THENCE 0.8 MILE NORTH ALONG SKY LINE DR.,  
AF3171'IN SECTION 15, R 41 E, T 37 S, ABOUT 0.2 MILE WEST AND ACROSS  
AF3171'COUNTY FROM MILEPOST 256, AT JENSEN BEACH, ABOUT 65 YARDS EAST  
AF3171'AND ACROSS SKY LINE DRIVE FROM THE NORTHEAST CORNER OF THE JENSEN  
AF3171'BEACH COMMUNITY CHURCH, ON THE TOP OF THE HIGHEST HILL IN THE  
AF3171'VICINITY, 101 FEET EAST OF THE CENTER LINE OF SKY LINE DRIVE,  
AF3171'13.4 FEET NORTHWEST OF THE NORTHEAST CORNER OF AN 11-FOOT SQUARE  
AF3171'CONCRETE BUILDING, 1.4 FEET WEST OF A METAL WITNESS POST, ABOUT  
AF3171'LEVEL WITH SKY LINE DR. AND SET IN THE TOP OF A CONCRETE POST  
AF3171'PROJECTING 4 INCHES ABOVE THE LEVEL OF THE GROUND. NOTE-- MARK  
AF3171'IS ON PROPERTY OF JOHN KALLOCH 410 SKYLINE DR.

AF3171

STATION RECOVERY (1967)

AF3171

AF3171'RECOVERY NOTE BY COAST AND GEODETIC SURVEY 1967 (JB)

AF3171'ABOUT A MILE AIR LINE NNW OF THE MAIN CORNER IN JENSEN BEACH OR  
AF3171'ABOUT 0.3 MILE W ALONG COMMERCIAL STREET OR NO. S 707 A FLORIDA  
AF3171'HWY. FROM ITS T-JUNCTION WITH INDIAN RIVER DRIVE AND TURN RIGHT,  
AF3171'THENCE 0.7 MILE N ALONG SKYLINE DRIVE TO TOP OF HILL AND THE  
AF3171'STATION ON THE RIGHT, 101 FEET E OF CENTER LINE OF 18-FOOT  
AF3171'PAVEMENT OF SKYLINE DRIVE, ON APPARENTLY HIGHEST POINT IN THE  
AF3171'VICINITY, ON PROPERTY OF MR. JOE HOFF OF NO. 410 SKYLINE DRIVE,  
AF3171'STANDARD DISKS WITH THE SURFACE MARK  
AF3171'PROJECTING 0.3 FOOT AND THE DISKS STAMPED CEMETERY 1906 1934.

AF3171'

AF3171'R.M. NO. 1 WAS FOUND APPARENTLY SLIGHTLY LEANING SOUTHERLY AND WAS  
AF3171'RESET AS NO. 4 R.M. ALL OTHER WERE FOUND IN GOOD CONDITION, THO  
AF3171'THE NO. 2 R.M. (AZIMUTH MARK) IS NOW OBSTRUCTED BY MAIN BODY OF  
AF3171'JENSEN BEACH COMMUNITY CHURCH BUILDING JUST ACROSS SKYLINE DRIVE.

AF3171'

AF3171'NO. 3 R.M. IS

AF3171'33-1/2 FEET SSW OF TRANSFORMER POWER POLE, 10 YARDS NE OF THE  
AF3171'CREST OF THE RIDGE, AND PROJECTS 0.1 FOOT.

AF3171'

AF3171'NO. 4 R.M. IS 23 FEET E OF C/L OF SKYLINE DRIVE, 1.2 FEET NW OF  
AF3171'LOT CORNER MONUMENT, AND PROJECTS 0.2 FOOT.

AF3171'

AF3171'R.M. STAMPED CEMETERY NO 2 1906 1934, PROJECTS 0.2

AF3171'FOOT, IS ABOUT 0.2 MILE W FROM

AF3171'THE STATION, AND REACHED FROM JUNCTION OF SKYLINE DRIVE AND NO. S



AF3171'707 A HWY. BY GOING W ON HWY. ABOUT 0.3 MILE TO CROSSROADS AND  
AF3171'TURN RIGHT, THENCE 0.6 MILE TO MARK ON RIGHT, ABOUT 150 YARDS N  
AF3171'OF CEMETERY ON LEFT (W) OF ROAD, ABOUT 45 YARDS N OF ROAD  
AF3171'SUMMIT, 20 FEET E OF CENTER LINE OF 18-FOOT PAVEMENT OF SAVANNAH  
AF3171'ROAD, 0.5 FOOT HIGHER THAN SAME, ABOUT 5 YARDS N OF LINE  
AF3171'BETWEEN FIELD AND WOODS (PROPERTY LINE), AND 1.5 FEET N OF  
AF3171'STEEL WITNESS POST. THE MARK IS BELIEVED TO HAVE BEEN  
AF3171'INCLUDED IN THE LEVEL NET IN 1967---THERE IS A PAINTED + ON  
AF3171'NEARBY POLE.

AF3171'

AF3171'THE CEMETERY ALLUDED TO IN PREVIOUS DESCRIPTIONS AS ON THE HILL  
AF3171'AT THE STATION IS EVIDENTLY THAT OF A REPORTEDLY STILLBORN  
AF3171'INFANT. THAT GRAVE IS NOW OUTLINED ONLY BY A BORDER OF BRICK AND  
AF3171'POSSIBLY MAY BE MOVED IN TIME.

AF3171'

AF3171'AIRLINE DISTANCE AND DIRECTION FROM NEAREST TOWN  
AF3171'ABOUT A MILE NNW OF CENTER OF JENSEN BEACH.

AF3171

AF3171 STATION RECOVERY (1970)

AF3171

AF3171'RECOVERY NOTE BY NATIONAL GEODETIC SURVEY 1970 (LFS)  
AF3171'STATION MARK, REFERENCE MARKS NO. 3 AND 4 AND THE AZIMUTH MARK  
AF3171'WERE RECOVERED IN GOOD CONDITION. REFERENCE MARK NO. 5 WAS SET  
AF3171'AND REFERENCE MARK NO. 3 DESTROYED AT THE REQUEST OF THE PROPERTY  
AF3171'OWNER TO MAKE WAY FOR THE CONSTRUCTION OF A NEW HOUSE. THE  
AF3171'AZIMUTH MARK IS NO LONGER VISIBLE FROM THE STATION, DUE TO  
AF3171'CONSTRUCTION OF A CHURCH ALONG THE WEST SIDE OF SKYLINE DRIVE.  
AF3171'NO DISTANT OBJECTS WERE VISIBLE FROM THE STATION TO SET A NEW  
AF3171'AZIMUTH MARK.

AF3171'

AF3171'A COMPLETE NEW DESCRIPTION FOLLOWS---

AF3171'

AF3171'STATION IS LOCATED ABOUT 1 MILE NORTH-NORTHWEST OF THE CENTER OF  
AF3171'JENSEN BEACH, ALONG THE EAST SIDE OF SKYLINE DRIVE AND IN THE  
AF3171'FRONT LAWN OF A RESIDENCE WHICH IS OWNED BY MR. JOE HOFF OF  
AF3171'NO. 410 SKYLINE DRIVE. 52 FEET EAST OF A POWERLINE POLE, 27 FEET  
AF3171'WEST-SOUTHWEST OF THE NORTHWEST CORNER OF MR. HOFFS HOUSE, 35  
AF3171'FEET SOUTHWEST OF THE SOUTHWEST CORNER OF MR. FRANK BARTONS  
AF3171'HOUSE AND 1 FOOT SOUTH OF A WITNESS SIGN. THE MARK IS A  
AF3171'STANDARD DISK SET IN THE TOP OF A SQUARE CONCRETE POST AND  
AF3171'STAMPED CEMETERY 1906 1934. THE MARK PROJECTS ABOUT 5  
AF3171'INCHES AND IS SURROUNDED BY A ROUND CONCRETE SLAB WHICH IS  
AF3171'ABOUT 5 FEET IN DIAMETER.

AF3171'

AF3171'TO REACH FROM THE JUNCTION OF INDIAN RIVER DRIVE AND STATE  
AF3171'HIGHWAY S 707 A IN JENSEN BEACH, GO WEST ON STATE S 707A FOR 0.3  
AF3171'MILE TO SKYLINE DRIVE. TURN RIGHT AND GO NORTHERLY ON SKYLINE  
AF3171'DRIVE FOR 0.7 MILE TO TOP OF HILL AND STATION ON RIGHT AS  
AF3171'DESCRIBED.

AF3171'

AF3171'REFERENCE MARK NO. 4, A STANDARD DISK SET IN THE TOP OF A SQUARE  
AF3171'CONCRETE POST AND STAMPED CEMETERY 1906 1930 NO 4 1967 IS 28 FEET  
AF3171'SOUTH OF CENTERLINE OF DRIVEWAY, 13 FEET NORTH OF THE CENTERLINE  
AF3171'OF ANOTHER DRIVEWAY AND 22 FEET EAST OF THE CENTERLINE OF SKYLINE  
AF3171'DRIVE. THE MARK PROJECTS ABOUT 2 INCHES.

AF3171'

AF3171'REFERENCE MARK NO. 5, A STANDARD DISK SET IN THE TOP OF A ROUND  
AF3171'CONCRETE POST AND STAMPED CEMETERY 1906 NO 5 1970 IS 45-1/2 FEET  
AF3171'NORTHWEST OF THE SOUTHWEST CORNER OF GARAGE, 42 FEET EAST OF  
AF3171'SKYLINE DRIVE, 34 FEET NORTH OF A POWERLINE POLE, 33 FEET NORTH  
AF3171'OF PROPERTY LINE, 5 FEET NORTHEAST OF SABOL PALM TREE AND 1 FOOT  
AF3171'SOUTH OF A WITNESS POST. THE MARK IS FLUSH WITH THE GROUND.

AF3171'

AF3171'AZIMUTH MARK IS A STANDARD REFERENCE MARK DISK STAMPED CEMETERY  
AF3171'NO 2 1906 1934. IT IS 20 FEET EAST OF THE CENTERLINE OF SAVANNA  
AF3171'ROAD 150 YARDS NORTH OF A SMALL CEMETERY, 0.2 MILE WEST OF THE



AF3171'STATION AND 1.5 FEET NORTH OF A WITNESS POST.

AF3171'

AF3171'AIRLINE DISTANCE AND DIRECTION FROM NEAREST TOWN

AF3171'ABOUT 1 MILE NNW OF JENSEN BEACH.

AF3171

AF3171 STATION RECOVERY (1972)

AF3171

AF3171'RECOVERY NOTE BY NATIONAL GEODETIC SURVEY 1972 (WHS)

AF3171'STATION MARK, R.M. NO. 4 AND THE AZIMUTH MARK (R.M. NO. 2) WERE

AF3171'FOUND IN GOOD CONDITION AS WAS A NEW REFERENCE MARK, NO. 5. THIS

AF3171'NEW MARK IS IN THE FRONT YARD OF MR. BARTONS RESIDENCE AT 412

AF3171'SKYLINE DRIVE.

AF3171'

AF3171'THE 1967 DESCRIPTION BY J. BULL IS ADEQUATE EXCEPT PROPERTY IS

AF3171'NOW OWNED BY MR. JOHN KALLOCH INSTEAD OF JOE HOFF.

AF3171

AF3171 STATION RECOVERY (1972)

AF3171

AF3171'RECOVERY NOTE BY NATIONAL GEODETIC SURVEY 1972

AF3171'RECOVERED IN GOOD CONDITION.

AF3171

AF3171 STATION RECOVERY (1984)

AF3171

AF3171'RECOVERY NOTE BY US POWER SQUADRON 1984 (FGH)

AF3171'THESE FOUR ROTATED MARKS WERE RECOVERED AS DESCRIBED HEREIN--PAGE

AF3171'1 THROUGH 29.

AF3171'

AF3171'1. U.S.C. AND G.S. TRIANGULATION STATION - CEMETERY.

AF3171'

AF3171'2. U.S.C. AND G.S.-CEMETERY REFERENCE MARK NO 2 (AZIMUTH MARK).

AF3171'

AF3171'3. U.S.C. AND G.S.-CEMETERY REFERENCE MARK NO 4.

AF3171'

AF3171'4. U.S.C. AND G.S.-CEMETERY REFERENCE MARK NO 5.

AF3171

AF3171 STATION RECOVERY (1989)

AF3171

AF3171'RECOVERY NOTE BY US POWER SQUADRON 1989 (DHF)

AF3171'RECOVERED IN GOOD CONDITION.

AF3171

AF3171 STATION RECOVERY (1991)

AF3171

AF3171'RECOVERY NOTE BY US POWER SQUADRON 1991 (DHF)

AF3171'RECOVERED IN GOOD CONDITION.

\*\*\* retrieval complete.

Elapsed Time = 00:00:03



