

Identification_Information:

Citation:

Citation_Information:

**Mike J. Bartholomew
Biscayne Engineering**

Originator: Mike J. Bartholomew
Publication_Date: Unpublished material
Publication_Time: Unknown
Title: Martin County Tape Down Wells (M1258)
Edition: 1.0
Series_Information:
Publication_Information:
Larger_Work_Citation:
Citation_Information:
Series_Information:
Publication_Information:

Description:

Purpose

Abstract: A1A, Martin County, Florida
Purpose:

the well

To establish elevations on the well and on a disc set adjacent to
and provide the results in NAVD-88 format in accordance
with the CERP height modernization program

Supplemental_Information: None

Time_Period_of_Content:

Time_Period_Information:

Survey Date

Single_Date/Time:

Range_of_Dates/Times:

Beginning_Date: 20050801

Ending_Date: 20050901

Multiple_Dates/Times:

Currentness_Reference: Date and Time Range of Field/Office Work

Status:

Progress: Complete

Maintenance_and_Update_Frequency: Unknown

Spatial_Domain:

Bounding_Coordinates:

West_Bounding_Coordinate: -080°07' 32"

East_Bounding_Coordinate: -080°07' 32"

North_Bounding_Coordinate: +27°03' 22"

South_Bounding_Coordinate: +27°03' 22"

Keywords:

Theme:

Theme_Keyword_Thesaurus: None

Theme_Keyword: Well Site

Theme_Keyword: MARTIN

Theme_Keyword: M1258

Place:

Place_Keyword_Thesaurus: None

Place_Keyword: Well Site

Place_Keyword: Martin County, Florida

Place_Keyword: A1A

Place_Keyword: Gomez Grant

Stratum:

Temporal:

Access_Constraints: None

Use_Constraints: None

Point_of_Contact:

Elvie Ebanks

Contact_Information:

Contact_Person_Primary:

Contact_Person: Elvie Ebanks

Contact_Organization: South Florida Water Management

SFWMD

District

Contact_Organization_Primary:

Contact_Position: Project Manager

Contact_Address:

Address_Type: mailing and physical address

Address: 3301 Gun Club Road

City: West Palm Beach

State_or_Province: FL

Postal_Code: 33406

Country: USA

M1258.gen

Contact_Voice_Telephone: (561) 753-2400 x4717

Contact_Facsimile_Telephone: (561) 791-4093

Security_Information:

Cross_Reference:

Citation_Information:

Series_Information:

Publication_Information:

Data_Quality_Information:

Attribute_Accuracy:

Attribute_Accuracy_Report:

Equipment Used

This Survey was prepared using GPS and Leveling instruments. The horizontal location of the well was established using GPS.

The vertical data was collected using Level Wild NA-2. Coordinates are based on the Florida State Plane Coordinate System, East Zone, NAD 83/90. Elevations based on NAVD88

Logical_Consistency_Report:

Horizontal data was established using NGS control points AF7531 (C 403) and AJ5261 (GCY D19).

Vertical data was established using NGS benchmarks AF3053 (U 224 1965) and AF7531 (C 403 1991).

Coordinates are based on the Florida State Plane Coordinate System, East Zone, NAD 83/90.

Elevations are based on NAVD88.

Completeness_Report:

Horizontal location taken at approximate center of well.

Lat. +27°03' 21.645"

Long. -080°07' 32.120"

N 990520.229

E 940757.375

New leveled elevations.

New site benchmark "M1044" is a standard S.F.W.M.D. aluminum disc set in a concrete monument adjacent to the well.

Disc Elevation is 9.26' (NAVD88)

Top of Pipe (well M1258) Elevation is 8.83' (NAVD88) based on NGS NAVD88 adjustment of vertical network.

Origin of NAVD88 elevation for BM "M1044" and well "M1258" is closed bench level circuit through NGS benchmarks AF3053 (U 224 1965) and AF7531 (C 403 1991)

Well is situated South of S.E. Bridge Road (S.R. 708), North of Jonathan Dickinson State Park, East of U.S. 1 (S.E. Federal Highway), in the Gomez Grant, Martin County, Florida TO REACH the well from the intersection of Bridge Road (S.R. 708) and U.S. 1 (S.E. Federal Highway), travel East on Bridge Road for 0.35 miles to the intersection with A1A (S.E. Dixie Highway). Turn right and proceed South on A1A for 0.5 miles to Saturn Street, and the well on the right. Well M1258 is situated 85 feet (more or less) North of the centerline of Saturn Street and 22.3 feet (more or less) West of the centerline of A1A in a grass median. Well M1258 is

approximately

4 feet North of and 2 feet West of Well M1044. Well M1258 is approximately

2.7 feet North of a SFWMD disc stamped "M1044 2005". Top of well is beneath the ground surface inside of a valve box which is flush with the ground.

Positional_Accuracy:

Horizontal_Positional_Accuracy:

Horizontal

Horizontal_Positional_Accuracy_Report:

The horizontal position of the well "M1258" was established using differential GPS. NGS points AF7531 (C 403) and AJ5261 (GCY D19) were used as a source of horizontal control.

Quantitative_Horizontal_Positional_Accuracy_Assessment:

Horizontal_Positional_Accuracy_Value: 1 meter

Horizontal_Positional_Accuracy_Explanation: The intended

horizontal positional accuracy for this survey is 1 meter

M1258.gen

Vertical_Positional_Accuracy:

Level Line

Vertical_Positional_Accuracy_Report:

A level line was run originating on NGS control point AF3053 (U 224 1965) with NAVD-88 elevation, running through well "M1258" and terminated on point AF7531 (C 403 1991) in accordance with Florida Minimum Technical Standards.

Quantitative_Veritical_Positional_Accuracy_Assessment:

Vertical_Positional_Accuracy_Value: 0.02 feet

Vertical_Positional_Accuracy_Expl anati on: A bench level circuit was performed between AF3053 (U 224 1965) and AF7531 (C 403 1991), running through well "M1258" in accordance with Florida Minimum Technical Standards (Chapter 61g17-6, FAC). Length of benchmark run is 0.90 miles. Allowable error is 0.05 feet. Achieved Accuracy is 0.00 feet.

Lineage:

Source_Information:

Source_Citation:

Citation_Information:

Series_Information:

Publication_Information:

Larger_Work_Citation:

Citation_Information:

Series_Information:

Publication_Information:

Source_Time_Period_of_Content:

Time_Period_Information:

Single_Date/Time:

Range_of_Dates/Times:

Multiple_Dates/Times:

Process_Step:

Process_Description:

The horizontal work was performed using Ashtech GPS receivers. The vertical work was performed using level

Wild

N-A2

Process_Date: 20050823

Process_Time: 09000000

Process_Contact:

Contact_Information:

Contact_Person_Primary:

Contact_Organization_Primary:

Contact_Address:

Spatial_Data_Organization_Information:

Spatial_Reference_Information:

Horizontal_Coordinate_System_Definition:

Geographic:

Planar:

Map_Projection:

Albers_Conical_Equal_Area:

Azimuthal_Equidistant:

Equidistant_Conic:

Equiangular:

General_Veritical_Near-sided_Perspective:

Gnomonic:

Lambert_Azimuthal_Equal_Area:

Lambert_Conformal_Conic:

Mercator:

Modified_Stereographic_for_Alaska:

Miller_Cylindrical:

Oblique_Mercator:

Oblique_Line_Point:

Orthographic:

Polar_Stereographic:

Polyconic:

Robinson:

Sinusoidal:

van_der_Grinten:

Space_Oblique_Mercator_(Landsat):

Stereographic:

Transverse_Mercator:

M1258.gen
 van_der_Grinten:
 Grid_Coordinate_System:
 Universal_Transverse_Mercator:
 Transverse_Mercator:
 Universal_Polar_Stereographic:
 Polar_Stereographic:
 State_Plane_Coordinate_System:
 Lambert_Conformal_Conic:
 Transverse_Mercator:
 Oblique_Mercator:
 Oblique_Line_Point:
 Polyconic:
 ARC_Coordinate_System:
 Equi_rectangular:
 Azimuthal_Equidistant:
 Local_Planar:
 Planar_Coordinate_Information:
 Coordinate_Representation:
 Distance_and_Bearing_Representation:
 Local:
 Geodetic_Model:
 Vertical_Coordinate_System_Definition:
 Altitude_System_Definition:
 Depth_System_Definition:
 Entity_and_Attribute_Information:
 Detailed_Description:
 Entity_Type:
 Attribute:
 Attribute_Domain_Values:
 Attribute_Value_Accuracy_Information:
 Overview_Description:
 Distribution_Information:
 Distributor:
 Contact_Information:
 Contact_Person_Primary:
 Contact_Organization_Primary:
 Contact_Address:
 Standard_Order_Process:
 Digital_Form:
 Digital_Transfer_Information:
 Digital_Transfer_Option:
 Online_Option:
 Computer_Contact_Information:
 Network_Address:
 DisplayInstructions:
 Offline_Option:
 Recording_Capacity:
 Available_Time_Period:
 Time_Period_Information:
 Single_Date/Time:
 Range_of_Dates/Times:
 Multiple_Dates/Times:
 Metadata_Reference_Information:
 Metadata_Date: 20050823
 Metadata_Contact:
 Contact_Information:
 Contact_Person_Primary:
 Contact_Person: Mike J. Bartholomew
 Contact_Organization: Biscayne Engineering Company, Inc.
 Contact_Organization_Primary:
 Contact_Position: Project Surveyor
 Contact_Address:
 Address_Type: mailing and physical address
 Address: 529 W. Flagler Street
 City: Miami
 State_or_Province: FL
 Postal_Code: 33130
 Country: USA
 Contact_Voice_Telephone: (305) 324-7671
 Contact_Facsimile_Telephone: (305) 324-0809

M1258.gen

Contact_Electronic_Mail_Address: mi keb@bi scayneengi neeri ng. com

Hours_of_Service: 8:00 AM to 5:00 PM EST

Metadata_Standard_Name: FGDC Content Standards for Digital Geospatial Metadata

Metadata_Standard_Version: 1.0

Metadata_Time_Convention: Local time

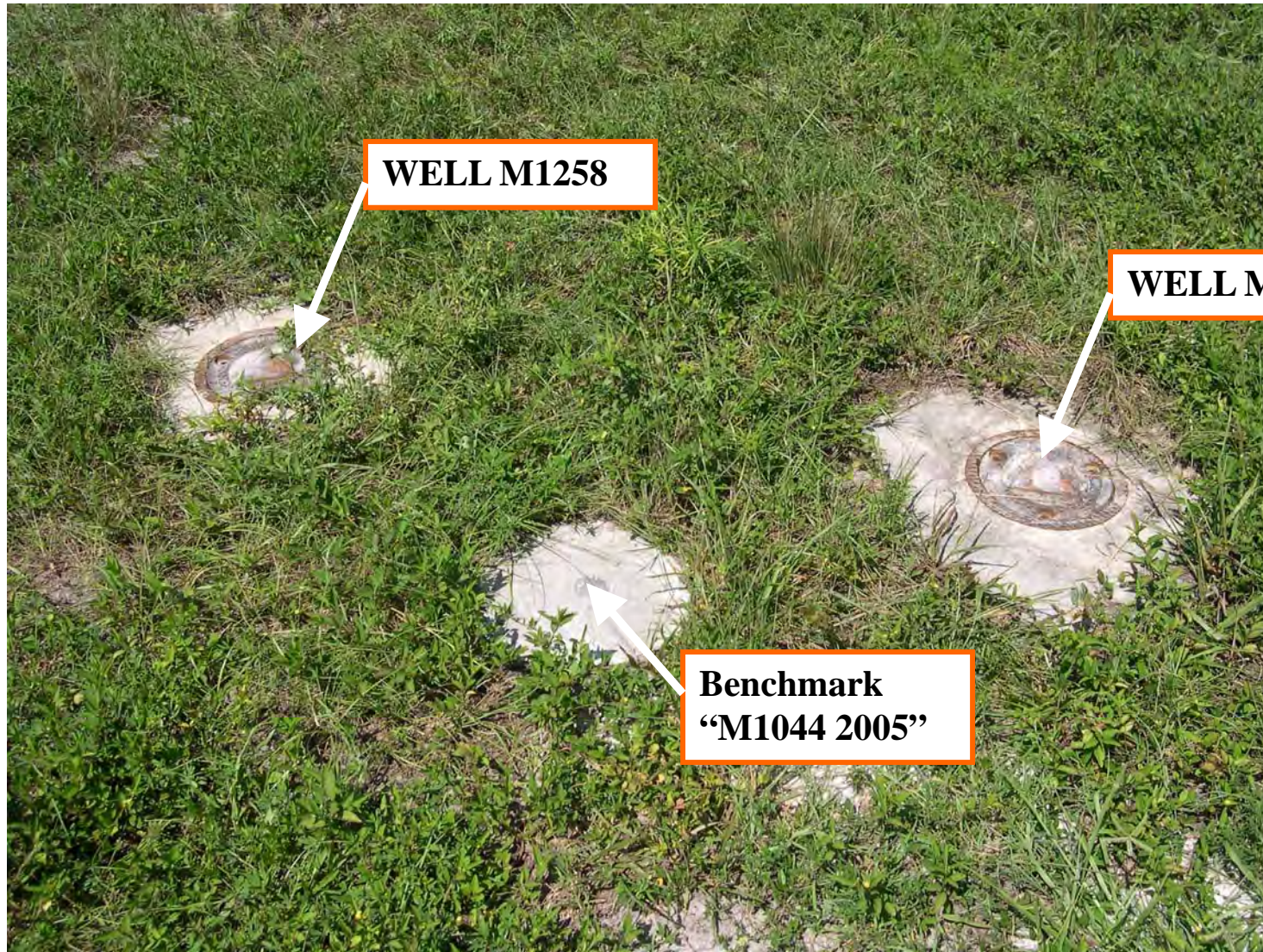
Metadata_Security_Information:

M-1258



Biscayne Engineering Company, Inc.
Date of Photo: 09-12-05
View: Looking Northwest from Saturn St. (A1A
on right of median). Well M-1258 near truck

M-1258



Biscayne Engineering Company, Inc.
Date of Photo: 09-12-05
View: Facing Northeast, Well M-1258 at left,
Well M-1044 at right, and BM "M1004-2005" in
center

M-1258



WELL M1258

**Top of pipe
elev.=8.83'(NAVD-88)**

**Biscayne Engineering Company, Inc.
Date of Photo: 09-12-05
View: Well M-1258**

M-1258



Benchmark "M1044 2005"

Elev.=9.26' (NAVD-88)

**Biscayne Engineering Company, Inc.
Date of Photo: 09-12-05
View: Benchmark "M-1044 2005"**

A. REDERO
T. LOPEZ
N. CEFEDA

#03-77478
S.F.W.M.D
"SITE-A"

8/3/05

(ESTABLISH
ELEV. ON WELL
M1039)

STA	BS	MEAN	HI	FS	MEAN
BM	9.370 7.410 5.450	7.410	22.440 ✓		
TP#1				1.330 0.720 0.110	0.720
SHAKE	8.170 6.690 5.210	6.690	28.410 ✓		
TP#2				10.790 9.350 7.710	9.350
SHAKE	3.810 5.220 0.710	2.260	21.320 ✓		
TP#3				8.920 7.400 5.850	7.400

ELEV	BM ELEV	DESC
	15.03	NGS # AD 6243 FND DISC STAMPED MAR 10 FLDNR. 78.2' FT W. OF US 1 S.E. LANE 450' FT N. OF COUNTY LINE NAVD 83
21.720 ✓		SET CUT NL
		SET CUT NL
19.060 ✓		SET CUT NL
		SET CUT NL
13.920 ✓		SET CUT NL

SAME
CREW

#03-77478

S. F. W. M. D

"SITE-A"

8/3/05

(ELEV. CONT.)

STA	BS	MEAN	HI	FS	MEAN	ELEV.	BM ELEV	DESC
SHAKE	5.540 4.685 3.830	4.685	18.605 ✓					SET CUT NL
TP#4				1.960 1.215 0.470	1.215	17.39 ✓		SET 80 D SPIKE
SHAKE	7.270 6.540 5.810	6.540	23.93 ✓					SET 80 D SPIKE
TP#5				5.500 4.060 2.620	4.060	19.87 ✓		SET 80 D SPIKE
SHAKE	5.585 4.640 3.695	4.64	24.51 ✓					SET 80 D SPIKE
TP#6				3.750 2.755 1.760	2.755	21.755 ✓		SET MAG NL IN TREE STUMP

SAME
CREW

#03-77478
S.F.W.M.D.
"SITE-A"

3/3/05

(ELEV. CONT.)

STA	BS	MEAN	HI	FS	MEAN
SHAKE	2.470 2.780 2.490	2.980	24.735		
M1039				2.770 2.555 2.265	2.555
SHAKE	2.350 1.630 0.910	1.630	24.315		
TP # 7				2.555 2.555 2.265	2.555
SHAKE	3.640 2.650 1.660	2.650	24.570		
TP # 8				5.480 7.510 5.260	7.230

ELEV	BM ELEV.	DESC.
		SET MAG NL IN TREE TRUNK
22.685		TOP OF PIPE WELL = M1039
		TOP OF PIPE WELL = M1039
21.760		MAG NL IN TREE TRUNK
		MAG NL IN TREE TRUNK
19.880		SET 80 D SPIKE

SAME
CREW

#03-77478
S. F. W. M. D

8/3/05

"SITE - A"

(ELEV. CONT)

STA	BS	MEAN	HI	FS	MEAN	ELEV	BM ELEV	DESC
SHAKE	5.510 4.070 2.630	4.070	23.750	✓				SET 80 D SPIKE
TP # 9				7.280 6.550 5.820	6.550	17.400	✓	SET 80 D SPIKE
SHAKE	2.340 1.650 0.960	1.650	19.050	✓				SET 80 D SPIKE
TP # 10				6.010 5.120 4.730	5.120	13.930	✓	SET CUT NL
SHAKE	7.130 5.710 4.290	5.710	19.640	✓				SET CUT NL
TP # 11				6.060 6.420 4.780	6.420	13.220	✓	SET CUT NL

2548/03

SAME
CREW

#03-77478
S.F.W.M.D.

"SITE-A"

8/3/05

(ELEV. CONT)

2548/04

STA	BS	MEAN	HI	FS	MEAN	ELEV	BM ELEV	DESC
SHAKE	5.950 4.495 3.040	4.495	17.715					SET CUT NL
TP#12				6.000 4.780 3.560	4.780	12.935		SET CUT NL
SHAKE	7.160 5.920 4.680	5.920	18.855					SET CUT NL
TP#13				11.750 10.050 8.350	10.050	8.805		SET CUT NL
SHAKE	6.590 5.290 3.990	5.290	14.095					SET CUT NL
TP#14				7.790 5.845 3.900	5.845	8.250		SET CUT NL

SAME
CREW

#03-77478
S.F.W.M.D

8/3/05

"SITE - A"

(ELEV. CONT)

STA	BS	MEAN	HI	#S	MEAN
	6.870				
SHAKE	5.360	5.360	13.610	✓	
	3.850				

				5.380	
TP#15				3.430	3.430
				1.480	

	4.330				
SHAKE	2.820	2.820	13.000	✓	
	1.310				

				7.460	
TP#16				5.660	5.660
				3.860	

	6.290				
SHAKE	4.790	4.790	12.130	✓	
	3.270				

				5.150	
TP#17				3.305	3.305
				1.460	

2548/05

BM	DESC
ELEV	
	SET CUT NL

10.180	✓	SET CUT NL
--------	---	------------

	SET CUT NL
--	------------

7.340	✓	SET CUT NL
-------	---	------------

	SET CUT NL
--	------------

8.825	✓	SET CUT NL
-------	---	------------

SAME
CREW

#03-77478
S.F.M.M.D.

8/3/05

"SITE-A"

(ELEV. CONT.)

STA	BS	MEAN	HI	FS	MEAN	BLEN	BM ELEV	DESC
SHAKE	9.620 8.100 6.600	8.700	16.925	✓				SET CUT NL
TP # 18				12.750 10.560 8.370	10.560	6.365	✓	SET CUT NL
SHAKE	7.550 5.310 3.070	5.310	11.675	✓				SET CUT NL
TP # 19				7.750 5.925 3.900	5.825	5.850	✓	SET CUT NL
SHAKE	7.870 6.355 4.840	6.355	12.205	✓				SET CUT NL
TP # 20				5.870 3.870 1.850	3.870	8.335	✓	SET CUT NL

SAME
CREW

#03-77478
S.F.W.M.D.

8/3/05

"SITE-A"

(ELEV CONT)

STA	BS	MEAN	HI	FS	MEAN
SHAKE	7.320 6.385 5.450	6.385	17.720		

BM				6.040 5.460 4.880	5.460
----	--	--	--	-------------------------	-------

BM	3.605 3.425 3.245	3.425	26.110		
----	-------------------------	-------	--------	--	--

DISC M1039				3.920 3.740 3.560	3.74
---------------	--	--	--	-------------------------	------

SHAKE	3.320 3.140 2.960	3.140	25.510		
-------	-------------------------	-------	--------	--	--

BM				3.865 3.755 3.645	3.755
----	--	--	--	-------------------------	-------

2548/07

ELEV	BM ELEV	DESC.
------	------------	-------

SET CUT NIL

↓
9.260 9.780
/ /
ERR = 0.020

NGS # A55245
END DISC STAMPED
GCY DOZ 2001
296 W OF W EDGE OF PAV.
COUNTY LINE RD NEAR HEAD W
NAVD 88

22.685 WELL = M1039

22.310 ↓

SET S.F.W.M.D. DISC
STAMPED M1039 2005

↓
21.755 21.755 TP #16 MARY NIL IN STUMP
NO ERROR

SAME
CREW

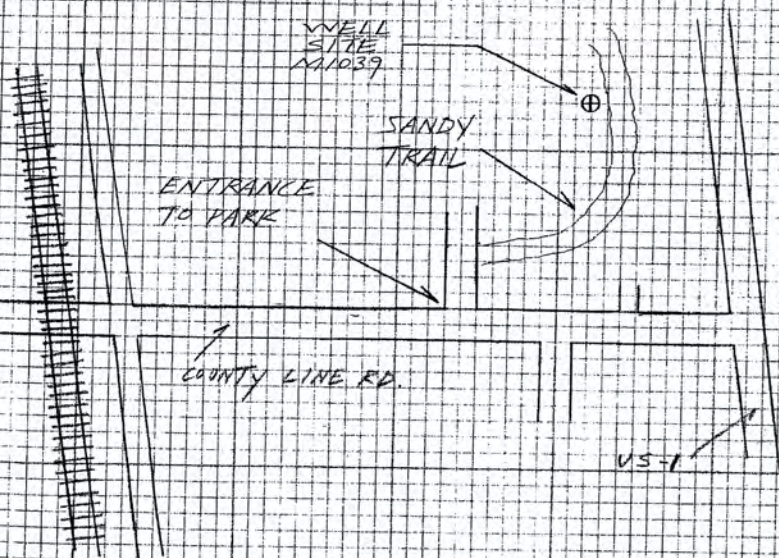
#03-77478
S.F.W.M.D.

(SITE - A
DESCRIPTION)

8/3/05

DIRECTIONS -

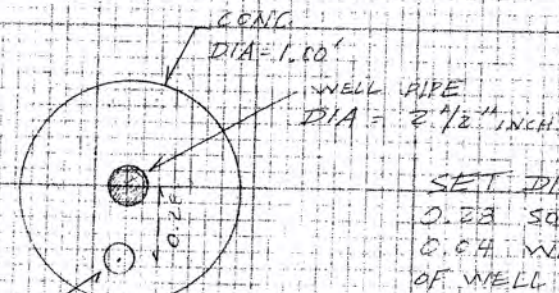
FROM THE INTERSECTION OF
US-1 AND COUNTY LINE RD.
TRAVEL WEST ON COUNTY
LINE RD FOR 0.2 MILES
TO THE ENTRANCE OF TERVESTA
PARK TURN NORTH INTO
PARK AND THEN EAST ONTO A
SANDY TRAIL THAT CIRCLES
AROUND FOR 0.2 MILES THE
WELL IS ON THE LEFT SIDE
OF THE TRAIL



2548/08

SKETCH OF WELL SITE = M1039

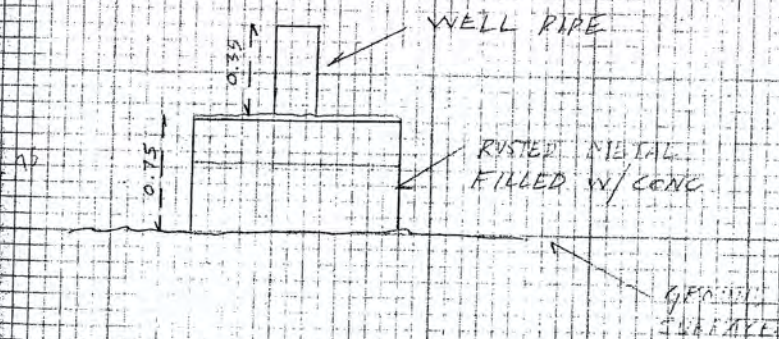
TOP VIEW



SET DISC
0.28 SOUTH
0.04 WEST
OF WELL PIPE

SET
S.F.W.M.D.
DISC
STAMPED
M1039 2005

SIDE VIEW



SAME
CREN

#03-77478
S.F.W.M.D.

8/3/05

"SITE-B"

(ESTABLISH
ELEV ON WELL
M1233)

STA	BS	MEAN HI	FS	MEAN
BM	4.675 4.530 4.385	4.530	12.250	✓
M1233			4.975 4.910 4.845	4.910
SHAKE	5.385 5.325 5.265	5.325	12.665	✓
BM			5.095 4.945 4.795	4.945

2548/09

ELEV	BM ELEV	DESC
7.720		NGS # AJ 5644 END DISC STAMPED B 516 2001 52.50' N. OF PROT. $\frac{1}{4}$ OF SE COUNTY LINE RD AND 4' W. OF PROT. W. EDGE OF EAV. OF SE WOODEN BRIDGE L.M.
7.340		TOP OF PIPE NAVD 88 WELL = M1233
		TOP OF PIPE WELL = M1233
7.720	7.720	NGS # AJ 5644 END BRASS D. NAV 88

SAME
CREW

#03-77473
S.F.W.M.D.

"SITE-B"

8/3/05

ESTABLISH
ELEV. ON WELL
M1230

STA	BS	MEAN	HI	FS	MEAN
BM	4.790 4.640 4.490	4.640	12.360		
M1230				5.010 4.925 4.840	4.925
SHAKE	5.300 5.215 5.130	5.215	12.650		
BM				5.080 4.930 4.780	4.930

2548/10

ELEV	BM ELEV	DESC
7.720	7.720	NGS # AJ5644 FND DISC. STAMPED 3516 2001 52.50' N. OF PROJ. C. OF SE COUNTY LINE RD 4' W. OF PROJ. W. EDGE OF FAV. SE. WOOLEN BRIDGE LN TOP OF PIPE NAVD 89 WELL = M1230
7.435		
7.720	7.720	TOP OF PIPE WELL = M1230
7.720	7.720	NGS # AJ 5644 FND BRASS D. NAVD 89

SAME
CREW

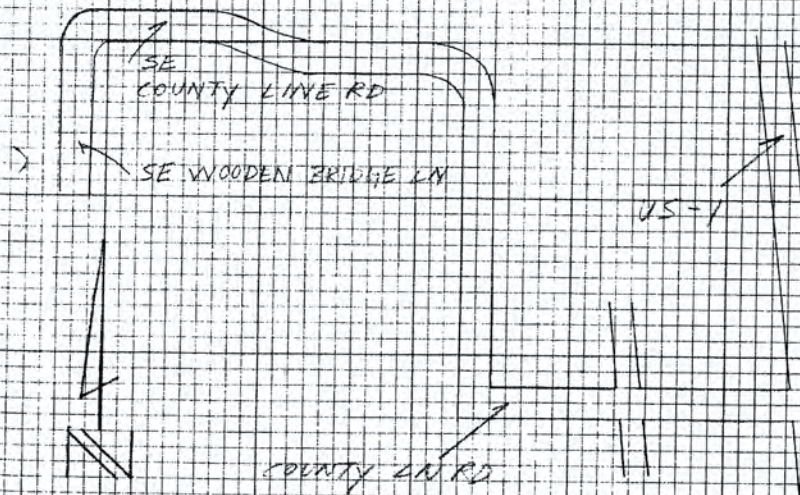
#03-1478
S.F.W.M.D.

(SITE - B
DESCRIPTION)

8/3/05

DIRECTIONS - FROM THE INTERSECTION OF US
AND COUNTY LN RD. TRAVEL WEST
ON COUNTY LN RD FOR 1.3 MILE
CONTINUE NORTH FOR 0.9 MILE
AND CONTINUE WEST AGAIN FOR
0.7 MILES ON SE COUNTY LN RD WHERE
IT TURNS SOUTH AND BECOMES
SE WOODEN BRIDGE LN PARK ON SIDE
OF RD AND WALK NORTH INTO WOODS
THE WELLS ARE 96 ± NORTH OF
PROJECTED ϕ OF SE COUNTY LN RD
AND ARE ON LINE WITH THE WEST
EDGE OF PAY. OF SE WOOD BRIDGE LN.

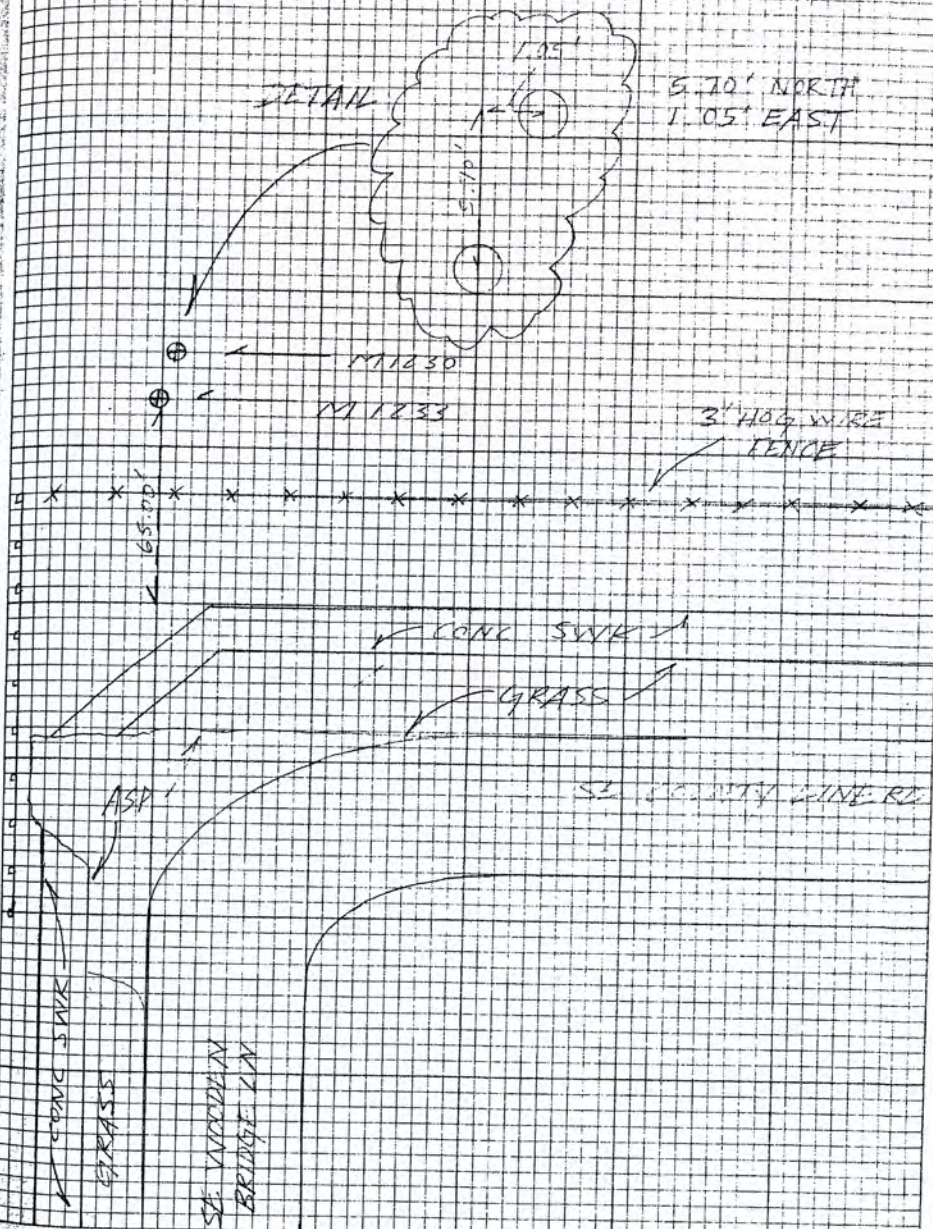
- ⊙ WELL SITE M1230
- ⊙ WELL SITE M1233



2548/11

DETAIL

5.70' NORTH
1.05' EAST



A. REPERO
T. LOPEZ
N. CEPEDA

#03-17478
S.F.W.M.D
"SITE - C"

8/4/05

(ESTABLISH
ELEV. ON WELLS
M1229, M1232)

STA	BS	MEAN	HI	FS	MEAN	BM ELEV	BM ELEV	DESC.
BM	5.860 5.050 4.240	5.050	14.310				9.260	NGS # AJ 5647 FND DISC STAMPED E. 516.2001 AT THE INTERSECTION OF PINE TREE ST AT MARTIN COUNTY & WEST PALM LINE 13 FT NORTH OF WOOD POWER POLE SET CUT NL NAVD 88
TP#1				6.920 5.245 3.570	5.245		9.065	SET CUT NL
SHAKE	6.245 4.755 3.265	4.755	13.820					SET CUT NL
TP#2				5.250 3.869 2.070	3.869		9.960	SET CUT NL
SHAKE	7.000 5.270 3.540	5.270	15.230					SET CUT NL
TP#3				8.720 7.010 5.300	7.010		8.220	SET CUT NL

2543/12

SAME CREW #03-17418
S.F.W.M.D.
"SITE-C"

8/4/05

(ELEV CONT)

STA	BS	MEAN	HI	FS	MEAN	ELEV	EM ELEV	DESC
SHAKE	7.000 5.705 4.390	5.705	13.925 ✓					SET CUT NL
TP#4				6.565 5.065 3.565	5.065	8.860 ✓		SET CUT NL
SHAKE	6.900 4.930 2.960	4.930	13.730 ✓					SET CUT NL
TP#5				7.100 5.395 3.690	5.395	8.395 ✓		SET CUT NL
SHAKE	7.000 5.250 3.500	5.250	13.645 ✓					SET CUT NL
TP#6				5.705 3.705 1.705	3.705	7.940 ✓		SET CUT NL

SAME
CREW

#03-77478
S.F.W.M.D.

2548/14

8/4/05

"SITE-C"

(ELEV. CONT.)

STA	BS	MEAN	HI	FS	MEAN	ELEV	BM ELEV	DESC
SHAKE	6.610 4.555 2.500	4.555	14.495					SET CUT NL
TP # 7				7.710 5.535 3.280	5.525	8.970		SET CUT NL
SHAKE	7.280 5.175 3.070	5.175	14.145					SET CUT NL
TP # 8				11.880 7.550 7.120	7.550	4.595		SET CUT NL
SHAKE	7.1500 5.195 3.240	5.195	9.790					SET CUT NL
TP # 9				3.930 2.180 0.380	2.180	7.610		SET CUT NL

SAME
CREW#03 - 77478
S.F.W.M.D

3/4/05

"SITE-C"

(ELEV. CONT)

STA	BS	MEAN	HI	FS	MEAN	ELEV	BM ELEV	DESC
SHAKE	7.570 6.490 5.410	6.49	14.100					SET CUT NL
TP#10				6.490 5.180 3.870	5.180	8.920		SET CUT NL
SHAKE	5.740 4.705 3.670	4.705	13.625					SET CUT NL
TP #11				5.900 5.000 4.100	5.000	8.625		SET MAG NL & W
SHAKE	4.750 4.300 3.850	4.300	12.925					SET MAG NL & W
M 1232				5.190 4.740 4.290	4.740	8.185		TOP OF PIPE WELL = M1232

SAME
OPEN

#03-77478
S.F.W.M.E.

"SITE - C"

2/4/05

(ELEV. CONT)

STA	BS	MEAN	HI	FS	MEAN	ELEV	BM ELEV	DESC
SHAKE	5.380 4.930 4.490	4.930	13.115					TOP OF PIPE WELL 1232
TP #11				5.270 4.850 4.430	4.850	8.265		TOP OF PIPE WELL 1229
SHAKE	4.850 4.450 4.020	4.450	12.715					TOP OF PIPE WELL 1229
TP #12				4.540 4.090 3.640	4.090	8.625		SET MAG NL & W
SHAKE	5.970 5.090 4.210	5.090	13.715					SET MAG NL & W
TP #13				5.850 4.800 3.750	4.800	8.915		SET CUT NL

SAME
CREW

#03-77478
S.F.W.M.D.
SITE - C

8/4/05

(ELEV. CONT.)

STA	ZS	MEAN	HL	FS	MEAN	ELEV	BM ELEV	DESC
SHAKE	6.640 5.335 4.030	5.335	14.350					SET CUT NL
-TP#14				7.730 6.645 5.580	6.645	7.605		SET CUT NL
SHAKE	4.150 2.475 0.800	2.475	10.080					SET CUT NL
-TP#15				7.570 5.470 3.410	5.470	4.590		SET CUT NL
SHAKE	11.450 9.175 6.940	9.175	13.785					SET CUT NL
TP#16				7.000 4.820 2.570	4.820	8.965		SET CUT NL

CAME
CREV

#03-77478
S.F. V. M. 2
"SITE-C"

13/18

8/4/05

(ELEV. SCNT)

STA	BS	MEAN	HI	FS	MEAN	ELEV	BM ELEV	DESC
SHAKE	7.820 5.575 3.330	5.575	14.540					SET CUT NL
TP#17				6.655 4.605 2.555	4.605	9.935		SET CUT NL
SHAKE	6.010 3.790 1.570	3.790	13.725					SET CUT NL
TP#18				6.900 5.330 3.760	5.330	8.575		SET CUT NL
SHAKE	7.370 5.460 3.550	5.460	13.855					SET CUT NL
TP#19				6.700 5.000 2.240	5.000	8.055		SET CUT NL

SAME
CREW

#03-71473
S.F.W.M.L.
"SITE-C"

7/4/05

(ELEV. CONT)

STA	BS	MEAN	HI	FS	MEAN	ELEV	BM ELEV.	DESC
SHAKE	6.820 5.320 5.870	5.360	14.175					SET CUT NL
TP#20				7.280 5.280 4.690	5.960	8.215		SET CUT NL
SHAKE	7.780 6.340 4.900	6.340	14.555					SET CUT NL
TP#21				9.230 6.920 4.610	6.920	7.635		SET CUT NL
SHAKE	7.520 1.325 0.130	1.325	2.760					SET CUT NL
TP#22				7.290 5.495 3.700	5.495	3.465		SET CUT NL

2542/19

SAME
CREW

#03-77478
S.F.W.M.D.
"SITE - C"

8/4/05

(ELEV. CONT.)

STA	BS	MEAN	HI	FS	MEAN	ELEV	BM ELEV	DESC
SHAKE	6.890 5.270 3.650	5.270	8.735	✓				SET CUT NL
TP# 23				6.680 5.150 3.640	5.760	3.575	✓	SET CUT NL
SHAKE	15.580 13.910 12.24	13.91	17.485	✓				SET CUT NL
TP# 24				10.200 7.700 5.200	7.700	9.785	✓	SET CUT NL
SHAKE	7.620 1.680 0.740	1.680	11.465	✓				SET CUT NL
TP# 25				5.840 4.490 3.140	4.490	6.975	✓	SET CUT NL

SAME
CREW

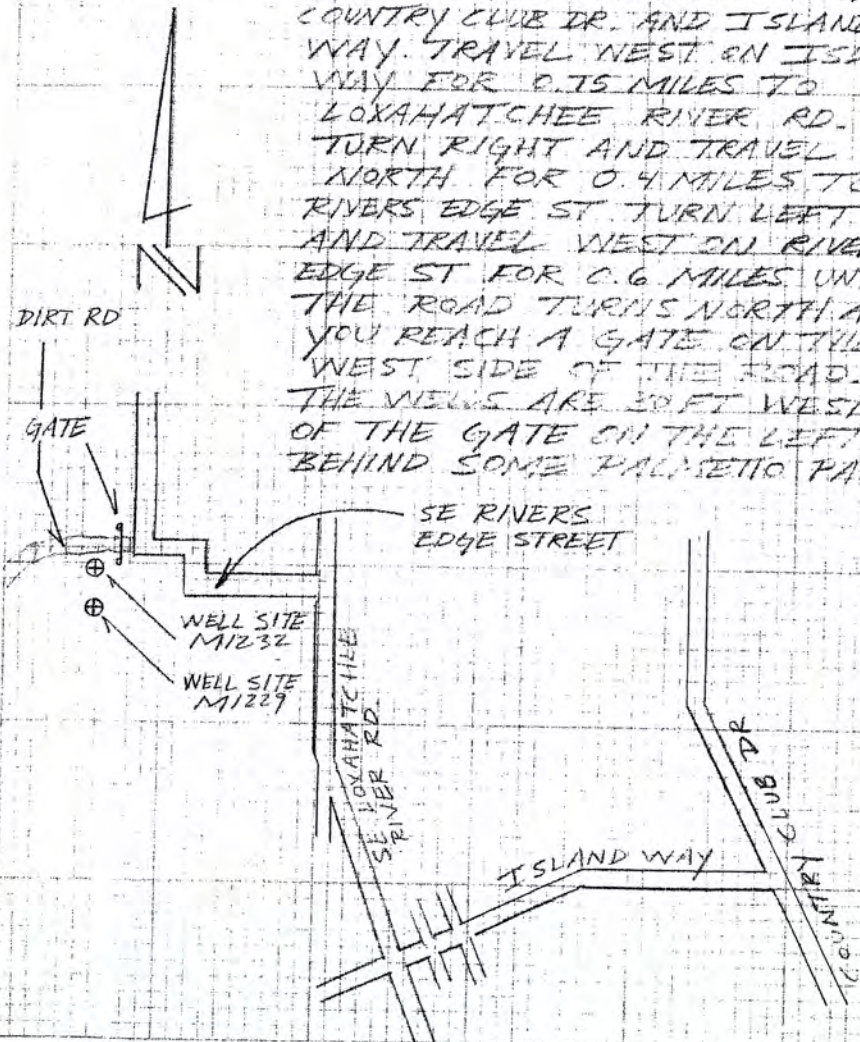
#03-77478
S.F.W.M.D

8/4/05

(SITE-C
DESCRIPTION)

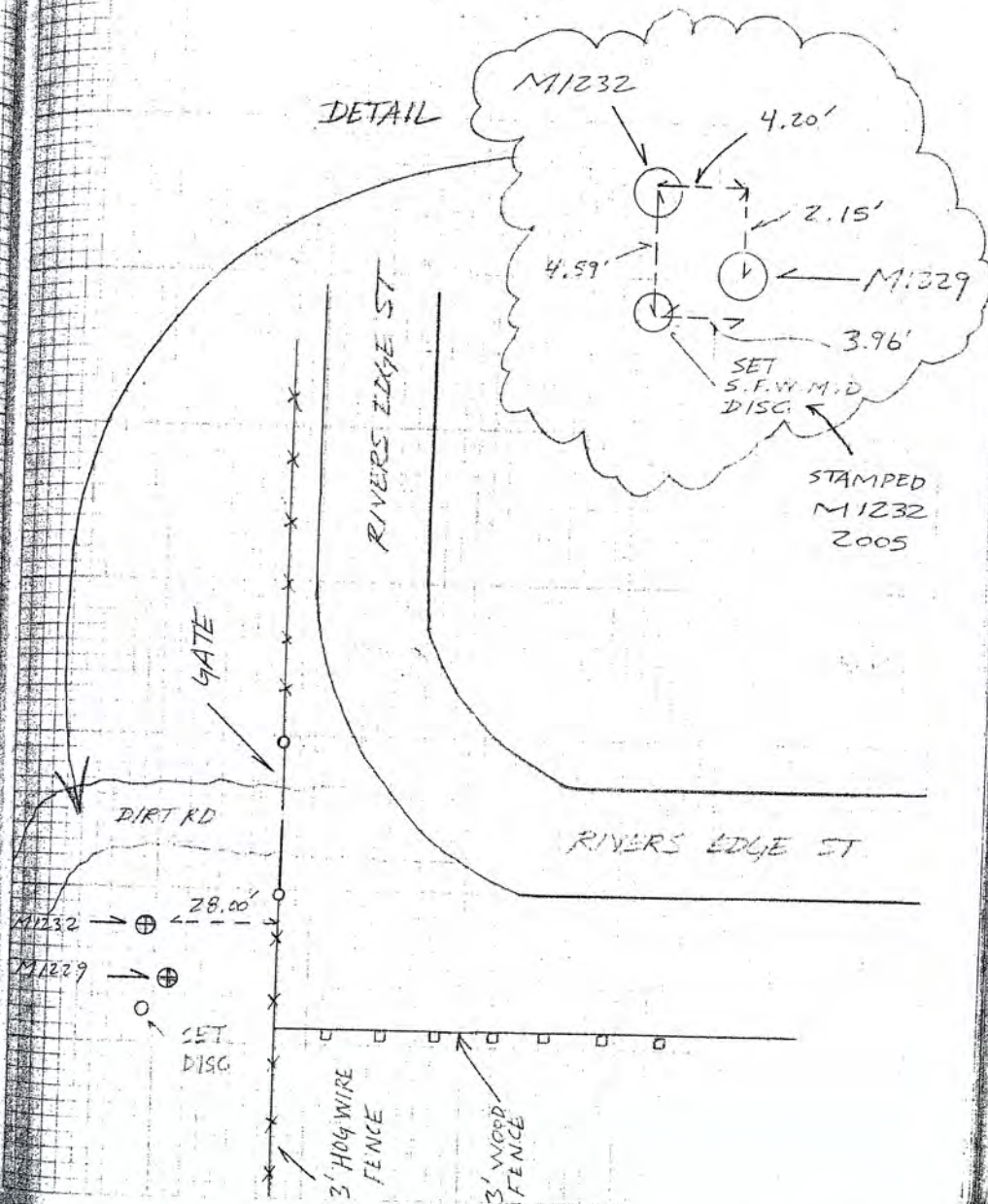
DIRECTIONS -

FROM THE INTERSECTION OF
COUNTRY CLUB DR. AND ISLAND
WAY. TRAVEL WEST ON ISLAND
WAY FOR 0.75 MILES TO
LOXAHATCHEE RIVER RD.
TURN RIGHT AND TRAVEL
NORTH FOR 0.4 MILES TO
RIVERS EDGE ST. TURN LEFT
AND TRAVEL WEST ON RIVERS
EDGE ST FOR 0.6 MILES UNTIL
THE ROAD TURNS NORTH AND
YOU REACH A GATE ON THE
WEST SIDE OF THE ROAD.
THE WELLS ARE 30 FT WEST
OF THE GATE ON THE LEFT
BEHIND SOME PALMETTO PALMS.



2548/23

DETAIL



STAMPED
M1232
2005

A. PEDRO
T. IOPTE
W. CEBELA

#03-77478
S. F. W. M. E.

"SITE-D9E"

ESTABLISH
ELEV. ON WELLS
M1092; M1044, M. 358

3/2/05

STA	BS	MEAN	HI	FS	MEAN	ELEV	BM ELEV	DESC
	6.570							
BM	5.310	5.310	13.330				7.920	NGS# AF3053 FND LISC STAMPED 0224 1965 0.7 MILES SOUTHEAST FROM AIA AND SOUTHEAST RIVER RD. 20.3' NORTHEAST OF POWER PILE. NAVC 32
	4.050							
M1092				5.930 7.305 6.180	7.305	5.925		16" PIPE WELL = M1092
	7.351							
SHAKE	6.730 5.610	6.730	12.065					TOP OF PIPE WELL = M1092
TP#1				5.290 3.740 2.370	3.740	8.915		SET CUT NL
SHAKE	7.740 6.150 4.560	6.150	15.065					SET CUT NL
TP#2				6.290 4.705 3.520	4.705	10.160		SET CUT NL

SAME
CREW

#03-77, ITS
S.F.V.M.D

3/8/05

" SITE-DIE "
(ELEV. CONT)

STA	ES	MEAN	HI	ES	MEAN	ELEV.	BM ELEV	DESC
SHAKE	5.540 4.680 3.820	4.680	14.340					SET CUT NL
M1044				6.480 5.740 5.000	5.740	9.100		TOP OF PIPE WELL - M1044
SHAKE	5.480 4.730	5.480	14.580					TOP OF PIPE WELL - M1044
M1058				6.210 5.780 4.930	5.780	8.850		TOP OF PIPE WELL - M1058
SHAKE	7.330 6.470 5.730	6.470	14.950					TOP OF PIPE WELL - M1058
TP#3				7.160 5.400 3.640	5.400	9.450		SET CUT NL

SAME
CREV

#00.1002
S.F.W.M.D

3/9/5

"SITE 29B"

(ELEV. CONT)

STA	BS	MEAN	HI	FS	MEAN	ELEV	EM ELEV	DESC
SHAKE	6.750 5.720 5.710	5.730	14.63					SET CUT NL
TP#4				2.570 1.550 2.570	1.550	10.130		SET CUT NL
SHAKE	2.340 2.330 5.270	6.895	16.935					SET CUT NL
TP#5				4.260 2.495 0.730	2.475	14.440		SET CUT NL
SHAKE	7.510 7.470 5.720	7.470	21.910					SET CUT NL
EM				5.220 3.910 2.600	3.910	18.000	18.000	

NO ERROR

NYS # AF7531
END FLANGE ENCASED STAINLESS
STEEL ROD
STAMPING C403 1971
147.6' NE OF AIA
1.3' SE OF POWER POLE

SAME
CREW

#03-77478
S.F.W.M.D.

8/2/05

" SITE - E "

(ELEV. CONT.)

STA	BS	MEAN	HI	FS	MEAN	ELEV	BM ELEV.	DESC
BM	6.160 5.295 4.430	5.295	14.395				9.100	WELL = M1044
DISC M1044				6.010 5.135 4.260	5.135	9.260		SET S.F.W.M.D. DISC STAMPED M1044 2005
SHAKE	6.300 5.430 4.560	5.430	14.690					" "
BM				5.260 4.530 3.800	4.530	10.160	10.160	TP # 2 CUT NL No ERROR

SAME
CPEW

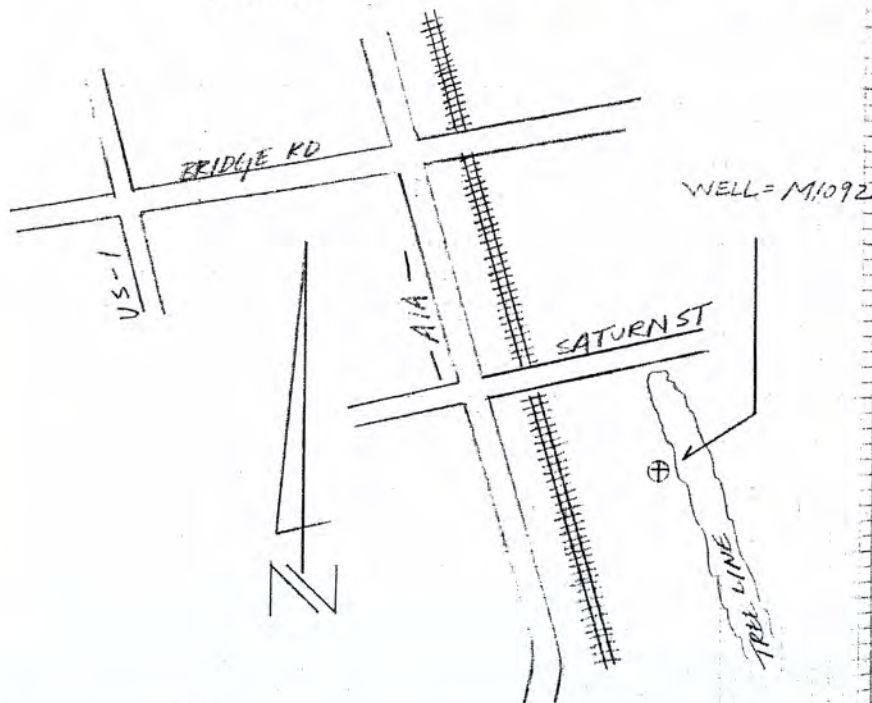
#03-77478
S.F.W.M.D

2548/28

8/9/05

(SITE-D
DESCRIPTION)

DIRECTIONS - FROM THE INTERSECTION OF
BRIDGE RD. AND US-1 TRAVEL
EAST ON BRIDGE RD. FOR 0.35
MILES TO AIA. TURN SOUTH ON
AIA AND TRAVEL FOR 5.7 MILES.
PARK ON EAST SIDE OF ROAD.
THE WELL IS 37.60 FT EAST
OF CENTER OF RAILROAD TRACKS
AT THE BASE OF TREE LINE
BORDERING A TWO STORY BROWN
HOUSE.



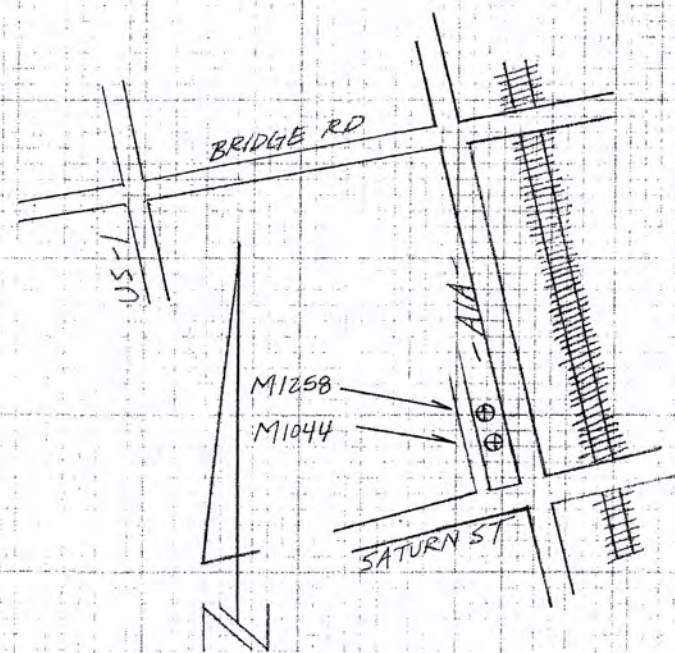
SAME
CREW

#03-77478
S.F.W.M.D.

8/8/05

(SITE-E
DESCRIPTION)

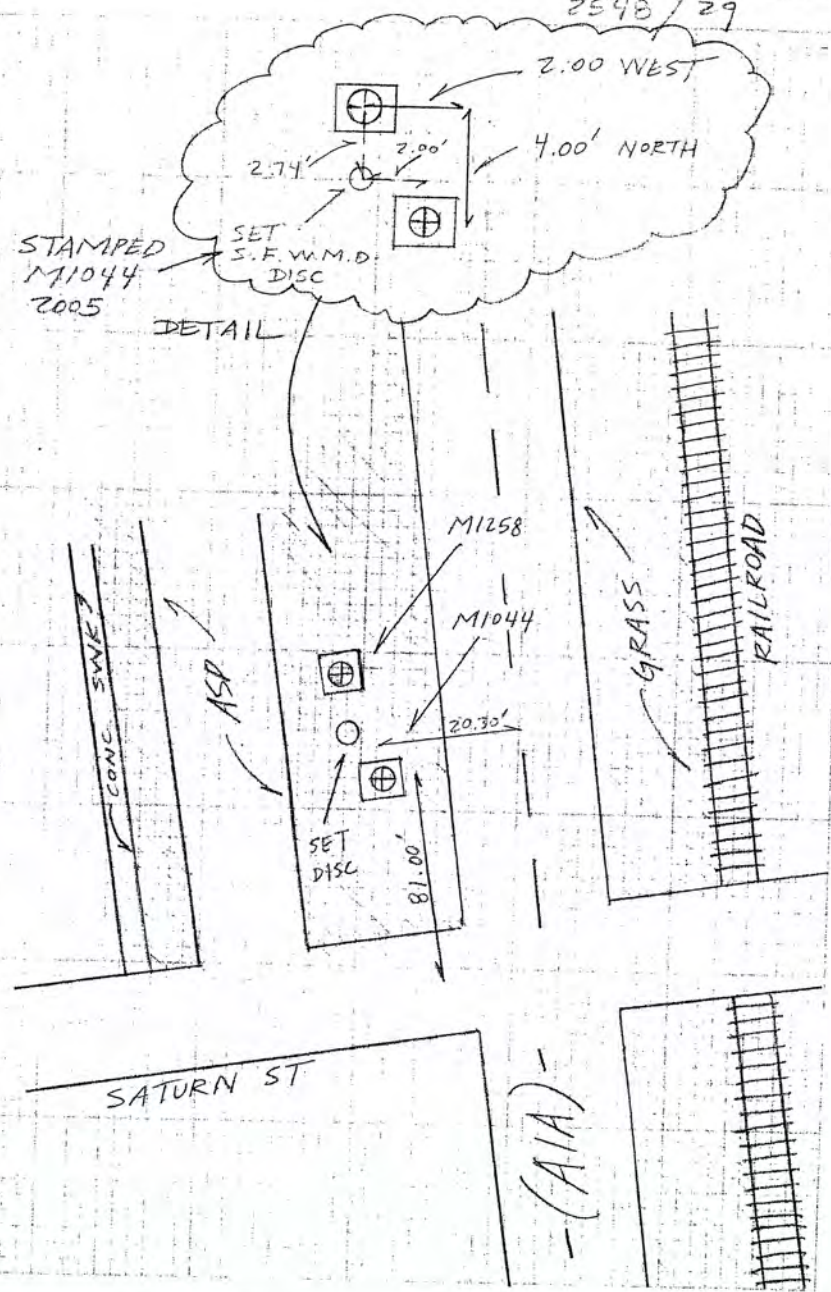
DIRECTIONS - FROM THE INTERSECTION OF
BRIDGE RD AND US-1 TRAVEL
EAST ON BRIDGE RD. FOR 0.35
MILES TO AIA. TURN SOUTH
AND TRAVEL FOR 0.5 MILES
TO SATURN ST. WELLS ARE
JUST NORTH OF SATURN ST.
ON THE WEST SIDE OF AIA.



2548/29

STAMPED
M1044
2005

DETAIL



-(AIA)-

SAME
CREW

#03-77473
S.F.W.M.D.
"SITE-F"

8/8/05

(ESTABLISH
ELEV. ON WELL
M1057)

STA	BS	MEAN	HI	FS	MEAN	ELEV	BM ELEV	DESC
BM	8.080 5.555 5.330	6.555	11.365	✓			4.810	DESC NGS 7555 THE DIS STAMPED 2414 H 23' W. OF E OF GOMEZ AVE 28' N. OF E OF PALM STREET IN NORTHWEST CORN. OF DRAINAGE BOX. NAVD 98
TP#1				7.810 5.350 2.890	5.750	11.015	✓	SET CUT NL
SHAKE	9.840 8.250 6.660	8.250	14.265	✓				SET CUT NL
TP#2				3.770 1.930 0.190	1.930	17.285	✓	SET MAG NL & W
SHAKE	6.470 6.110 5.730	6.110	18.395	✓				SET MAG NL & W
M1057				4.325 3.990 3.655	3.990	14.405	✓	TOP OF PIPE WELL = M1057

SAME
CREW

#03-77478
S.F.W.M.D.
"SITE-F"

8/8/05

(ELEV. CONT)

STA	BS	MEAN	HI	FS	MEAN	ELEV	BM ELEV	DESC
BM	4.406 4.080 3.760	4.030	18.485 ✓				14.405	WELL = M1057
DISC M1057				4.390 4.160 3.930	4.160	14.325 ✓		SET S.F.W.M.D DISC STAMPED = M1057 2005
SHAKE	4.470 4.230 3.990	4.230	18.555 ✓					" "
BM				6.670 6.270 5.870	6.270	12.285 12.285		TP#2 MAG N.E.W. NO ERROR

SAME
CREW

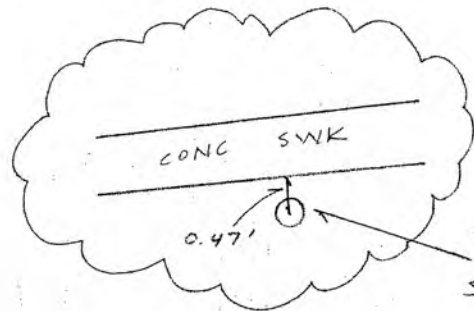
#03-77478
S.F.W.M.D.

2548 / 33

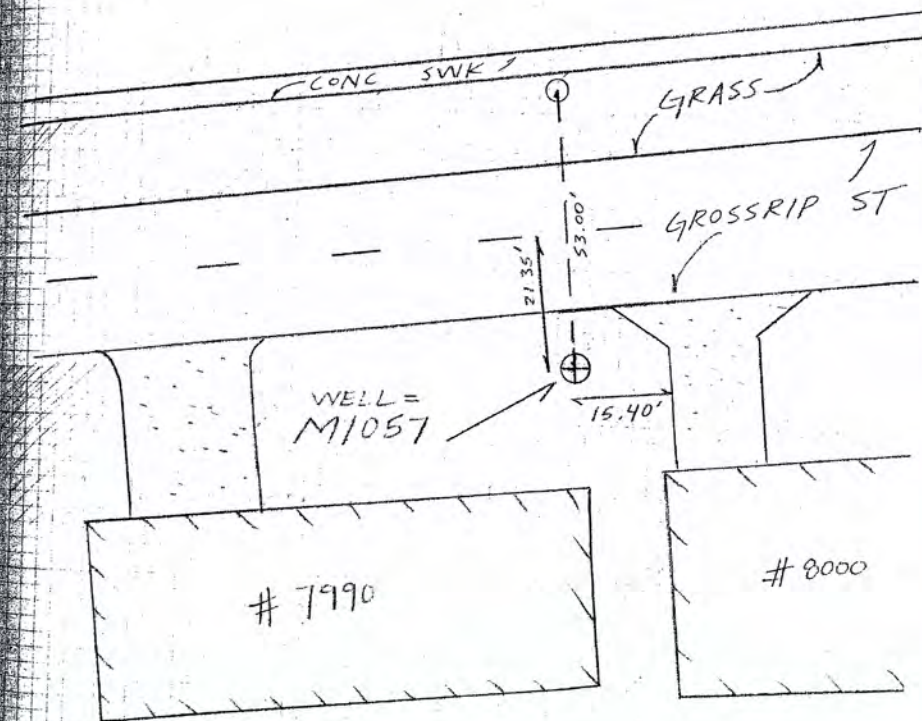
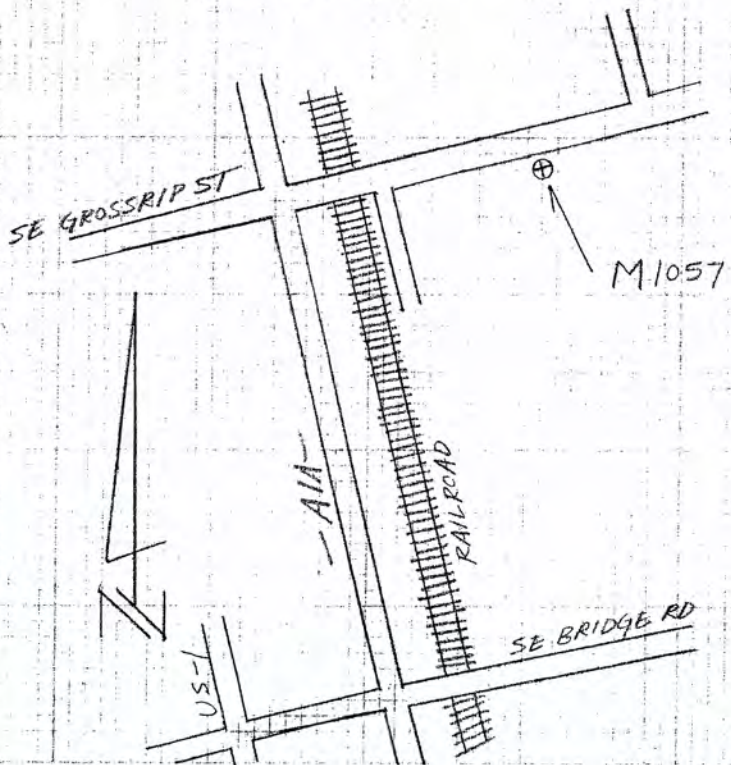
3/8/05

(SITE - F
DESCRIPTION)

DIRECTIONS - FROM THE INTERSECTION OF US-1 AND
BRIDGE RD. TRAVEL EAST FOR 0.35M
TO AIA. TURN LEFT AND TRAVEL
NORTH ON AIA FOR 2.5 MILES
TO GROSSRIP ST. AT GROSSRIP
STREET TURN RIGHT AND
TRAVEL EAST FOR 0.15 MILES
THE WELL IS ON SOUTH SIDE
OF ROAD IN FRONT OF HOUSE
7990.



SET S.F.W.M.D
DISC
STAMPED
M1057 2005



A. REIDERS
T. LOPEZ
C. CHESTER

#03-77478
S.F.W.M.I.
"SITE - 6"

8/15/05

(ESTABLISH
ELEV ON WELL=
141269)



STA	BS	MEAN	HI	FS	MEAN	ELEV	BM	ELEV	DESC
	4.160								
BM	3.320 2.480	3.320	20.950				17.630		NGS# 135612 FIND DISC SURVEYED 1957 2001 250' S. OF TWIN RIVERS MOBILE HOME PARK ENTRANCE 3.9' NORTHWEST OF HOWLER SOLE. NAV. 83
TP #1				5.920 4.635 3.390	4.635	16.315			SET CUT NL
SHAKE	7.320 5.845 4.370	5.845	22.160						SET CUT NL
TP #2				6.010 4.600 3.190	4.600	17.560			SET CUT NL
SHAKE	7.470 5.730 3.990	5.730	23.290						SET CUT NL
TP #3				5.415 4.125 2.835	4.125	19.165			SET CUT NL

SAME
CRIV.

#03-77478
S.F.W.M.D.
"SITE - G"

8/15/05

(ELEV. CONT)

STA	BS	MEAN	HI	FS	MEAN	ELEV	BM ELEV	DESC
SHAKE	6.045 5.745 5.445	5.745	24.910					SET CUT NL
M1269				7.370 6.915 6.460	6.915	17.995		TOP OF PIPE WELL = M1269
SHAKE	7.630 6.440 5.250	6.440	24.435					" "
TP # 4				6.420 4.800 3.130	4.800	19.635		SET CUT NL
SHAKE	6.660 4.890 3.120	4.890	24.525					SET CUT NL
TP # 5				6.900 5.610 4.320	5.610	18.915		SET CUT NL

SAME
CREW

#03-77478
S.F.W.M.D.
"SITE-G"

8/15/05

(ELEV. CONT)

STA	BS	MEAN	HI	FS	MEAN	ELEV	BM ELEV	DESC
SHAKE	5.760 4.180 2.600	4.180	23.095	✓				SET CUT NL
TP#6				6.800 5.290 3.780	5.290	17.805	✓	SET CUT NL
SHAKE	6.390 4.630 2.870	4.630	22.435	✓				SET CUT NL
TP#7				6.800 5.060 3.320	5.060	17.375	✓	SET CUT NL
SHAKE	6.480 4.975 3.470	4.975	22.350	✓				SET CUT NL
TP#8				6.370 4.975 3.620	4.975	17.355	✓	SET CUT NL

540/36

SAME
CREW

#03-77478
S.F.W.M.D.

2548/37

8/15/05

"SITE - G"

(ELEV. CONT)

STA	BS	MEAN	HI	FS	MEAN ELEV	BM ELEV	DESC
SHAKE	9.380 8.125 6.870	8.125	25.480 ✓				SET CUT NL

TP# 9				2.450 1.560 0.670	1.560	23.920 ✓	SET CUT NL
-------	--	--	--	-------------------------	-------	----------	------------

SHAKE	4.780 4.520 4.260	4.520	28.440 ✓				SET CUT NL
-------	-------------------------	-------	----------	--	--	--	------------

BM				6.170 5.925 5.680	5.925	22.515 22.480	NGS# AJ 5619 FND DISC STAMPED LS17 200/ 180' NORTHWEST FROM ϕ OF OSPREY ST. 11.2' NORTHEAST OF BARBED WIRE FENCE. NAVD 88
----	--	--	--	-------------------------	-------	------------------	---

ERR = 0.035 ✓

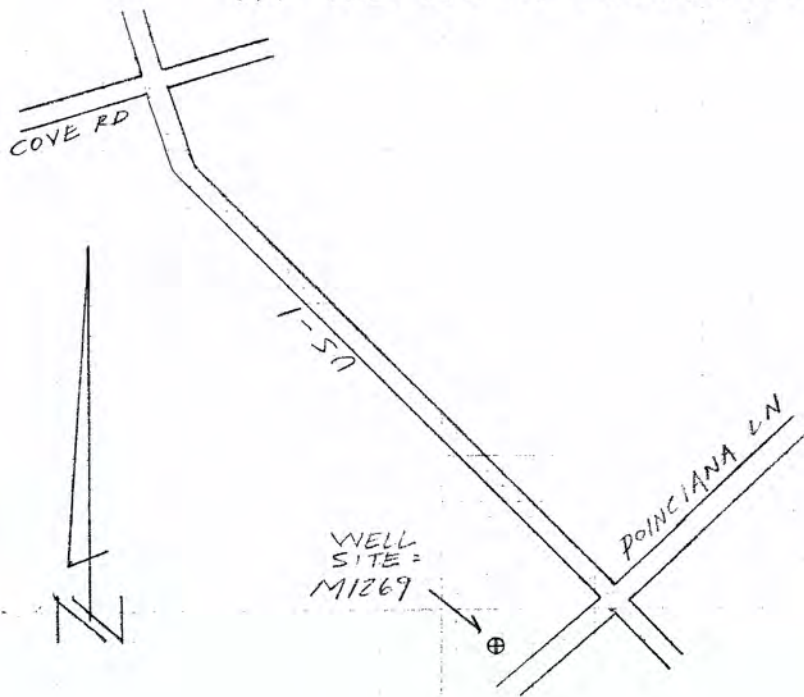
SAME
CREW

#03-77478
S.F.W.M.D.

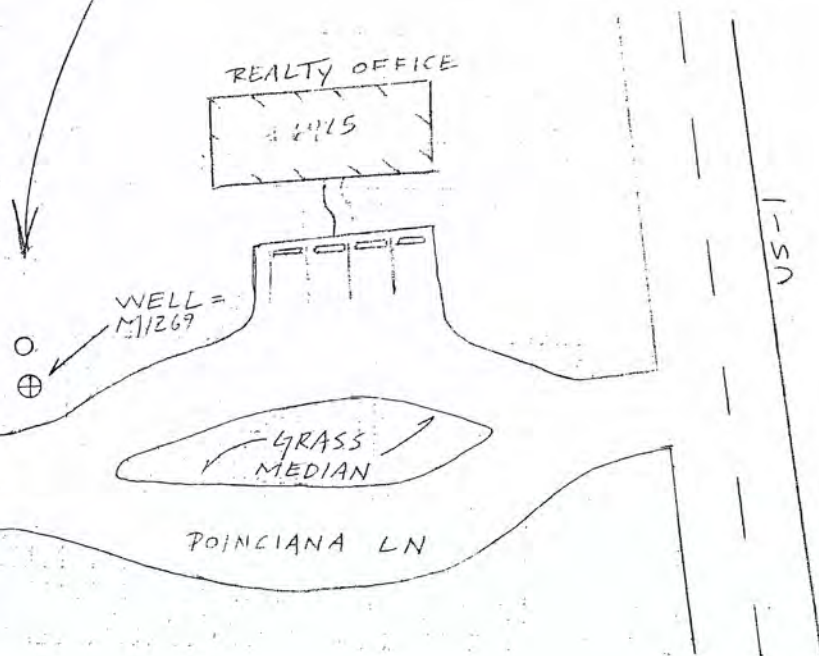
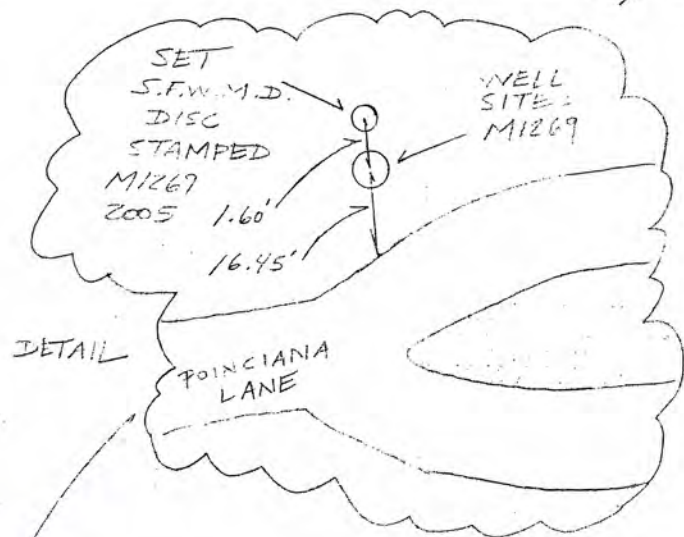
(SITE-G
DESCRIPTION)

8/15/05

DIRECTIONS - FROM THE INTERSECTION OF
US-1 AND COVE RD. TRAVEL
SOUTH ON US-1 FOR 3.1 MILES
TO POINCIANA LANE. TURN
RIGHT AND TRAVEL WEST.
THE WELL IS ON NORTH SIDE
OF POINCIANA LANE RIGHT
AFTER YOU PASS REALTY OFFICE
AT THE END OF MEDIAN STRIP.



2548/39



A. REJERO
T. LOPEZ
A. SANTIANA

#03-7747A
S.F.W.M.D.
"SITE - H"

5/18/05

ESTABLISHED
ELEV ON WELLS
19123E, 19127D

STA	BS	MEAN	HI	FS	MEAN	ELEV	3M ELEV	DESC
BM	4.860 4.320 3.780	4.320	45.75 4.575				✓ 41.430	NGS # AC5315 T277 BRASS STAMPED I 95 BY A 31 BT MMS. IN PLACE AT N. EDGE OF BRIDGE IN CONC. GUTTER 9.5' NORTH OF THE NW CORNER OF EXISTING BRIDGE. NAVD 88
TP#1				16.540 16.185 15.930	15.215	29.715	✓	SET 3" 2" WIRE
SHAPE	3.010 2.850 2.690	2.850	32.565	✓				SET 3" 2" WIRE
TP#2				14.630 14.310 13.990	14.310	18.255	✓	SET CUT NL
SHAPE	7.360 5.770 4.550	5.770	24.225	✓				SET CUT NL
TP#3				7.590 5.730 3.870	5.730	18.495	✓	SET CUT NL

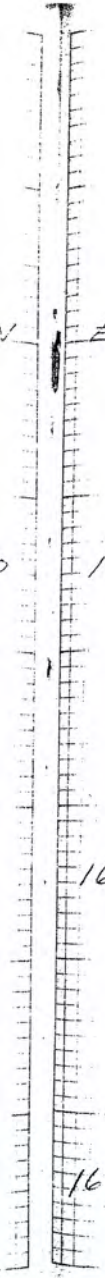
SAME
CFLVY

#03-71775
S.F.W. M.D.
"SITE - 11"

8/18/05

(ELEV CUT)

STA	BS	MEAN	HI	FS	MEAN	ELEV	BM ELEV	DESC
SHAKE	7.070 5.475 3.930	5.475	23.970					SET CUT NL
TP#4				7.360 5.750 4.140	5.750	18.220		SET CUT NL
SHAKE	7.300 6.410 5.520	6.410	24.630					SET CUT NL
DISC M1235				8.940 8.490 8.040	8.490	16.140		SET S.F.W. M.D. BRASS D. STAMPED M1235 2005
SHAKE	4.680 4.220 3.760	4.220	20.36					
M1235				3.770 3.975 3.370	3.975	16.785		WELL = M1235



SAME
CREST

3-1116
11.1.2.2
11.1.2.2

3/13/05

(ELEV. CONT)

STA	BS	MEAN	HI	FS	MEAN	ELEV	BM ELEV	SET
SHAKE	3.91 3.91	3.91	20.695					WELL = M1235
M1270				5.23 5.23	5.23	15.165		WELL = M1270
SHAKE	5.240 5.240 5.060	5.240	20.405					WELL = M1270
TP4 S				3.550 3.530 3.510	3.530	17.375		SET CUT NL
SHAKE	7.910 7.390 6.870	7.390	24.765					SET CUT NL
TP4 G				7.330 6.560 5.730	6.560	18.215		SET CUT NL

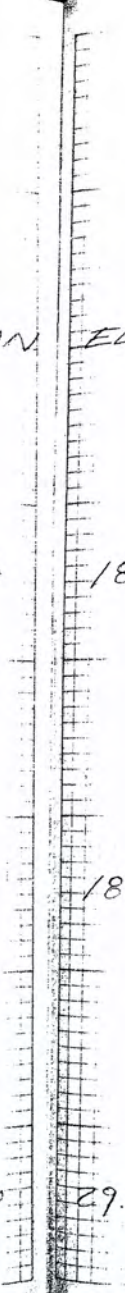
SAME
CREW

#03-77478
S.F.W.M.E.
"SITE-H"

8/15/05

(ELEV. CONT.)

STA	BS	MEAN HI	FS	MEAN ELEV	BM ELEV	DESC
SHAKE	7.260 5.790 4.320	5.790	24.005			SET CUT NL
TP#7			7.250 5.510 3.770	5.510	18.495	SET CUT NL
SHAKE	6.920 5.480 4.040	5.480	23.975			SET CUT NL
TP#8			7.510 5.710 3.910	5.710	18.265	SET CUT NL
SHAKE	13.030 12.745 12.460	12.745	31.010			SET CUT NL
TP#9			1.440 1.290 1.140	1.290	29.720	SET 80 D SPIKE



SAME
CREW

#03-77478
S.F.W.M.D.
"SITE-H"

3/18/05

(ELEV. CONT.)

STA	BS	MEAN	HI	FS	MEAN	ELEV	BM ELEV	DESC
-----	----	------	----	----	------	------	------------	------

	18.210							
SHAKE	17.750	17.750	47.470					
	17.290							

SET 80 D SPIKE

BM

5.705
5.445
5.185

5.445

42.025 42.000

ERR = 0.025

NGS # ACS343 FOOT BRASS I.D.
STAMPED I 95 89 A 24
IN MEDIAN AT NORTH END OF
BRIDGE. 4.6' N. OF THE N.
CONC. GUARDRAIL BETWEEN
N. AND S. LANES.
NAVD 88.

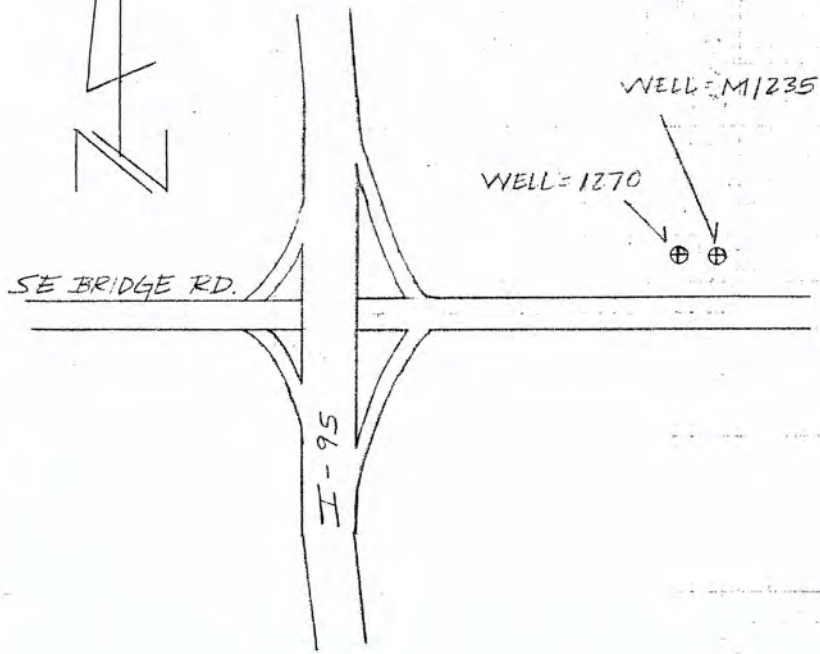
SAME
CREW

#03-77478
S.F.W.M.D

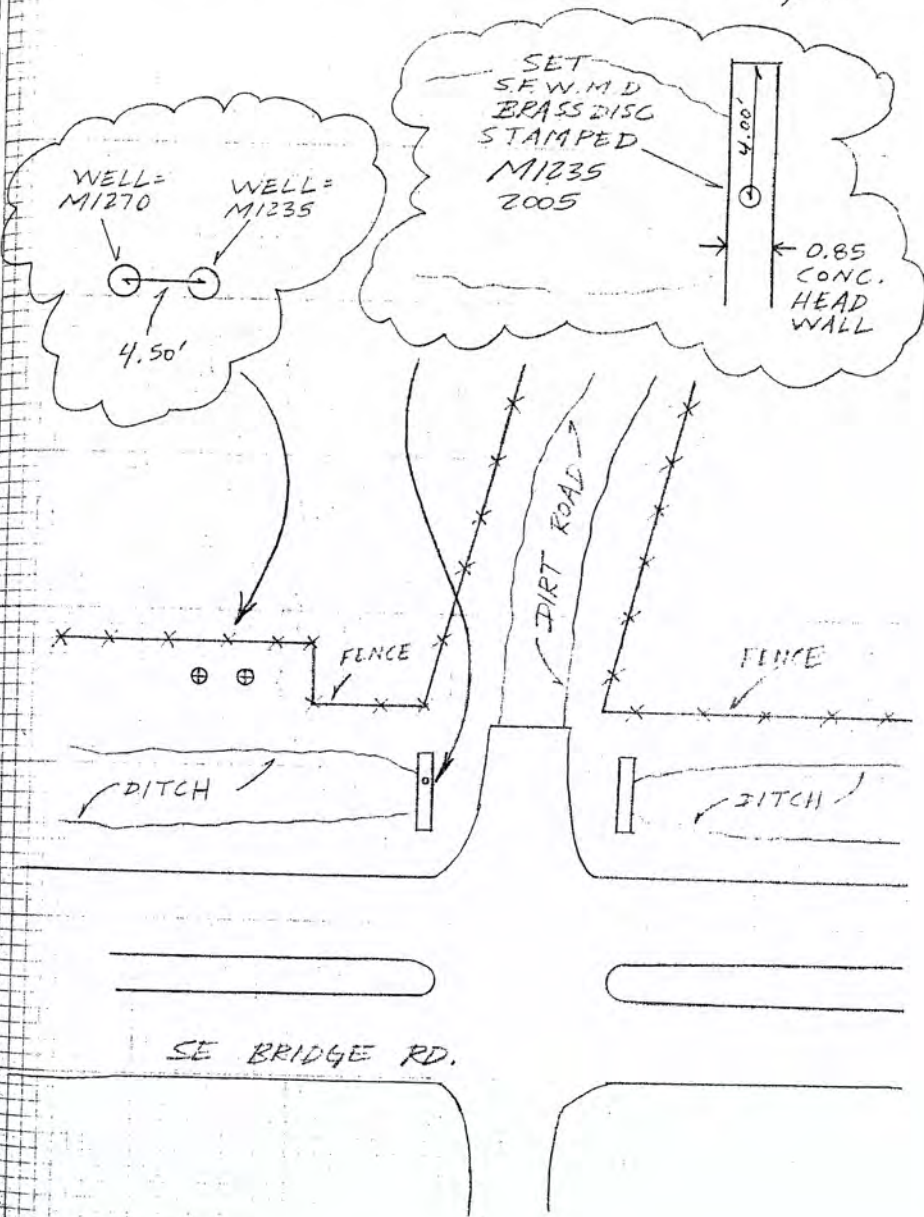
8/18/05

(SITE - H
DESCRIPTION)

DIRECTIONS - FROM THE INTERSECTION OF
I-95 AND BRIDGE RD. TRAVEL
EAST ON BRIDGE RD. FOR 0.3
MILES. TURN NORTH ON
DIRT RD AND PARK IN BETWEEN
DITCH AND FENCE LINE.
THE WELL IS ON THE NORTH
SIDE OF THE ACCESS RD. AND
67' WEST OF DIRT RD.



2548 / 45



A. REBERS
T. LOPEZ
A. LOPEZ

#03-111478
S.F.W.M.S.

"SITE - I"

3/19/05

(ESTABLISH
ELEV ON WELL =
M1081)

STA	BS	MEAN	HI	FS	MEAN	ELEV	BM ELEV	DESC
	8.620							
BM	7.140	7.140	32.270				25.130	NGS# AJ8248 FND DISC STAMPED NS22 2001 CERP 48.6 N. OF E OF KANNER RD 37.0 S. OF POWER POLE W/ GUY WIRE ON W. SIDE OF GATE. NAV83
	5.760							
				6.590				
TP# 1				5.035	5.035	27.235		SET CUT NL
				3.480				
	6.150							
SHAKE	5.255	5.255	32.490					SET CUT NL
	4.360							
				5.075				
M1081				4.665	4.665	27.825		WELL M1081
				4.195				
	4.630							
SHAKE	4.250	4.250	32.075					SET CUT NL
	3.350							
				5.730				
TP# 2				4.840	4.840	27.235		SET CUT NL
				3.750				

SAME
CREW#03-77478
S.F.W.M.D

8/19/05

"SITE - II"

(ELEV. CONT)

STA	BS	MEAN	HL	FS	MEAN	ELEV	BM ELEV	DESC
SHAKE	7.000 5.250 3.500	5.250	32.485					SET CUT NL
TP# 3				7.060 5.275 3.530	5.295	27.190		SET CUT NL
SHAKE	7.570 5.300 3.230	5.300	32.490					SET CUT NL
TP# 4				7.760 5.560 3.360	5.560	26.930		SET CUT NL
SHAKE	8.200 6.095 3.990	6.095	33.025					SET CUT NL
TP# 5				7.030 4.825 2.620	4.825	28.200		SET CUT NL

SAME
CREW

#03-77478
S. F. V. M. D

" SITE - I "

8/19/05

(ELEV. CONT)

STA	BS	MEAN	HI	FS	MEAN	ELEV	BM ELEV	DESC
SHAKE	6.520 4.190 1.860	4.190	32.390 ✓					SET CUT NL
TP# 6				7.450 5.210 2.970	5.210	27.180 ✓		SET CUT NL
SHAKE	7.460 4.720 1.980	4.720	31.900 ✓					SET CUT NL
TP# 7				7.000 4.945 2.890	4.945	26.955 ✓		SET CUT NL
SHAKE	7.170 5.330 3.490	5.330	32.785 ✓					SET CUT NL
TP# 8				7.640 5.370 3.100	5.370	26.915 ✓		SET CUT NL

SAME
CREW

#03-77478
S.F.W.M.D.

2543/49

8/19/05

"SITE-I"

(ELEV. CONT)

STA	BS	MEAN	HI	FS	MEAN
SHAKE	6.620 4.800 2.980	4.800	31.715	✓	

BM

8.050	
6.810	6.810
5.570	

ELEV.	BM ELEV.	DESC
-------	-------------	------

SET CUT NL

24.905	24.870	NGS # AJ8247 FND FLANGE ENCASED ROD STAMPING M 522 2001 CERP 0.2 MILES WEST OF ENTRANCE TO PAYSON PARK, 120' S. OF C. OF ROAD, 4.0' NORTH OF WOODEN FENCE. NAVL 88
--------	--------	---

ERR = 0.035

A. KLEBER
A. LOPEZ
M. MOYA

7/2/05

#03-1715
S.F. ...
"SITE II"

(ELEVATION)

STA	BS	INSTR	HI	SP	NEW
M1081	11.005 4.050 2.055		4.050	31.875	

2150 M1081				6.750 6.750 6.480	6.730
---------------	--	--	--	-------------------------	-------

SHAKE	6.900 6.570 6.240		6.570	31.715	
-------	-------------------------	--	-------	--------	--

TP # 1				5.110 4.450 3.850	4.450
--------	--	--	--	-------------------------	-------

ELEV	BM	DESC
27.825	2150	WELL SITE = M1081

25.145 ✓ SET S.F. Y.M.D BRAND D.
STAMPED M108 2005

11 11

27.235 27.235 OUT NL
NO ERROR ✓

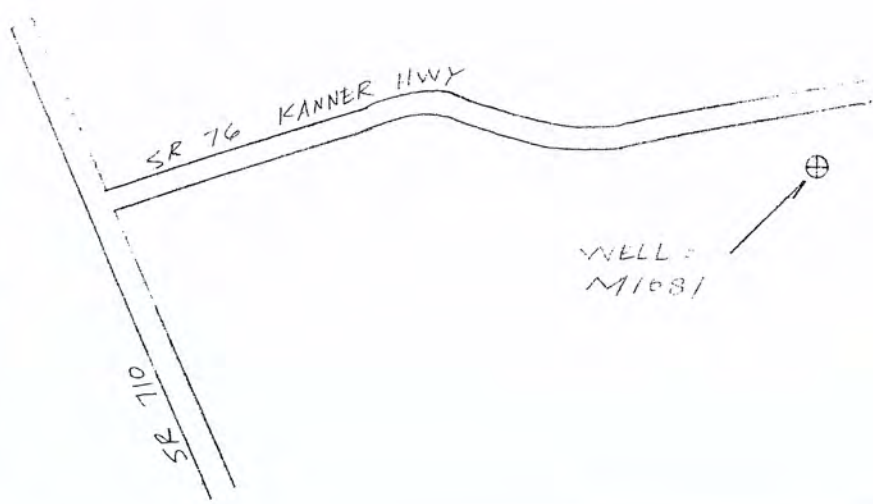
SAME
CREW

#03-77478
S.F.W.M.D.

(SITE - II
DESCRIPTION)

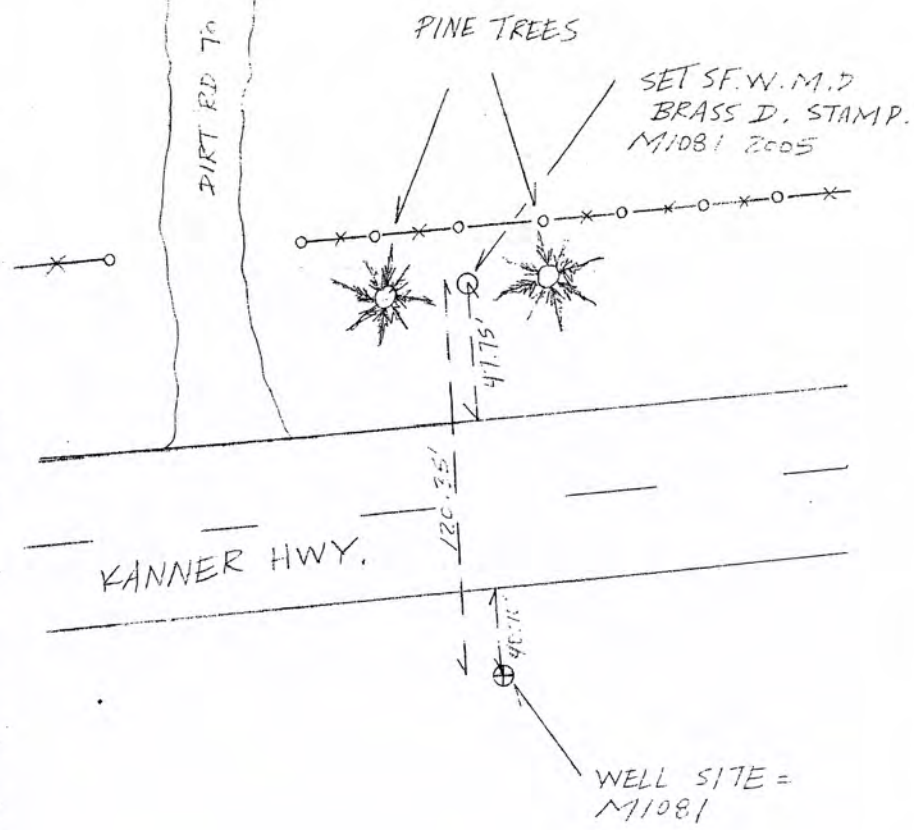
9/2/05

DIRECTIONS - FROM THE INTERSECTION
OF BEEHIVE HWY (SR 710) AND
KANNER HWY (SR 76) TRAVEL
EAST ON KANNER HWY FOR
5.35 MILES. THE WELL IS TO
THE RIGHT IN THE SOUTHERN
ROADSIDE EASEMENT, DIRECTLY
ACROSS FROM HOUSE # 5625.
ABOUT 45.7' SOUTH OF EP.



2549/51

5295 # 25001 TO HOUSE # 5625



SAME
OPEN

#027473
S.F. W.M.E.
" SITE - I "

7/2/05

(ESTABLISH
ELEV. ON WELL
M1045)

STA	BS	MEAN	HI	FS	MEAN	ELEV	BM ELEV	DESC
	5.755							
BM1	5.010	5.010	30.740				25.730	N45 # AJ0851 FIND MARK # 547 40 EAST END OF TIE SR TO AND SR TO 30.4' N OF & SR TO 17.5' S OF TIE SET M1045
	3.270							SET CUT NL
TP#1				5.540	4.090		26.650	SET CUT NL
				4.270				
				3.640				
SHAPE	5.970							
	4.340	4.340	30.970					SET CUT NL
	3.760							
TP#2				5.200	4.220		26.630	SET CUT NL
				4.380				
				3.410				
SHAPE	4.510							
	4.135	4.135	30.765					SET CUT NL
	3.760							
M1045				6.710	6.715		24.450	TOP OF PIPE WELL M1045
				5.215				
				5.920				

SAME
CREW

APPROXIMATE
ELEVATION

"SITE - J"

3.8.105

ELEV. DATA

STA	BS	MEAN	HI	FS	MEAN
SHAKE	6.971 6.478 6.071	6.478	30.920		

ZM
ELEV ELEV ZEGG

TOP OF PIPE WELL = 11045

TP # 3				4.665 4.285 3.905	4.285
--------	--	--	--	-------------------------	-------

26.635 ✓

SET CUT NL

SHAKE	6.080 4.535 3.050	4.535	31.170		
-------	-------------------------	-------	--------	--	--

SET CUT NL

TP # 4				5.960 4.530 3.100	4.530
--------	--	--	--	-------------------------	-------

26.645 ✓

SET CUT NL

SHAKE	5.790 4.420 2.850	4.420	31.060		
-------	-------------------------	-------	--------	--	--

SET CUT NL

TP # 5				5.720 4.285 2.850	4.285
--------	--	--	--	-------------------------	-------

26.775 ✓

SET CUT NL

SAME
CPLV.

#03-TTTR
S.F.W.M.D.

2548 / 54

9/2/05

"SITE-J"

(ELEV. CONT)

STA	BS	MEAN	HI	FS	MEAN	ELEV	BM ELEV	DESC
SHAKE	5.950 4.440 2.930	4.440	31.215	✓				SET CUT NL
TP # 6				5.860 4.340 2.200	4.340	26.875	✓	SET CUT NL
SHAKE	6.130 4.400 2.670	4.400	31.275	✓				SET CUT NL
TP # 7				6.070 4.505 2.940	4.505	26.770	✓	SET CUT NL
SHAKE	6.070 4.370 2.670	4.370	31.140	✓				SET CUT NL
TP # 8				6.320 4.465 2.610	4.465	26.675	✓	SET CUT NL

SAME
SITE

#03-77473
S.F.V.V.M.I.E

9/2/05

"SITE J"

(ELEV. CONT)

STA	IS	MEAN	HL	FS	MEAN	ELEV	BM ELEV	DESC
SHAKE	6.37 4.45 2.53	4.450	31.125					SET CUT NL
TP# 9				6.200 4.470 2.740	4.470	26.655	✓	SET CUT NL
SHAKE	6.380 4.340 2.300	4.340	30.995					SET CUT NL
TP# 10				6.150 4.560 2.970	4.560	26.435	✓	SET CUT NL
SHAKE	6.190 4.375 2.500	4.395	30.830					SET CUT NL
TP# 11				5.660 4.215 2.770	4.215	26.615	✓	SET CUT NL

SAME
CPE 11

#03-77478
S. F. W. M. D.

2548/50

7/3/35

"SITE - J"

(ELEV. CONT)

STA	BS	MEAN	HI	FS	MEAN	LLEV	BM ELEV	DESC
SHAKE	6.570 4.415 2.760	4.415	31.030					SET CUT NL

TP#12				5.120 4.500 3.270	4.500	26.530		SET CUT NL
-------	--	--	--	-------------------------	-------	--------	--	------------

SHAKE	5.736 4.210 2.690	4.210	30.740					SET CUT ALL
-------	-------------------------	-------	--------	--	--	--	--	-------------

BM				7.440 5.880 4.320	5.880	24.860	24.880	
----	--	--	--	-------------------------	-------	--------	--------	--

ERR = 0.020

NGS# AJ8886 FND FLANGE
ENCASED FOR STAMP. E 217
GO EAST FOR 5 MILES FROM
INTER. OF SR 710 AND SR
TO POINT N OF $\frac{1}{2}$ OF RD.
11.4' S. OF WITNESS POST
NAME 83.

A. FEDER
T. LOPEZ
M. MOYA

#03-77478
S.F.W.M.D

" SITE - J "

9/6/05

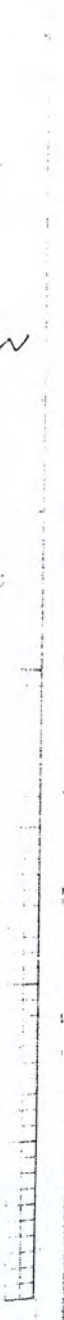
(ELEV. CONT.)

STA	BS	MEAN	HI	FS	MEAN	ELEV	BM ELEV	DESC
BM	6.550 6.140 5.730	6.140	30.590				24.450	TOP OF PIPE = M1045

DISC M1045				5.435 5.230 5.165	5.289	25.305		SET S.F.W.M.D BRASS IN. STAMPED M1045 2005
---------------	--	--	--	-------------------------	-------	--------	--	---

SHAKE	5.910 5.735 5.660	5.735	31.070					" "
-------	-------------------------	-------	--------	--	--	--	--	-----

BM				4.670 4.460 4.250	4.430	26.630	26.630	TOP OF SET CUT NL NO ERROR
----	--	--	--	-------------------------	-------	--------	--------	-------------------------------



SAME
CREW

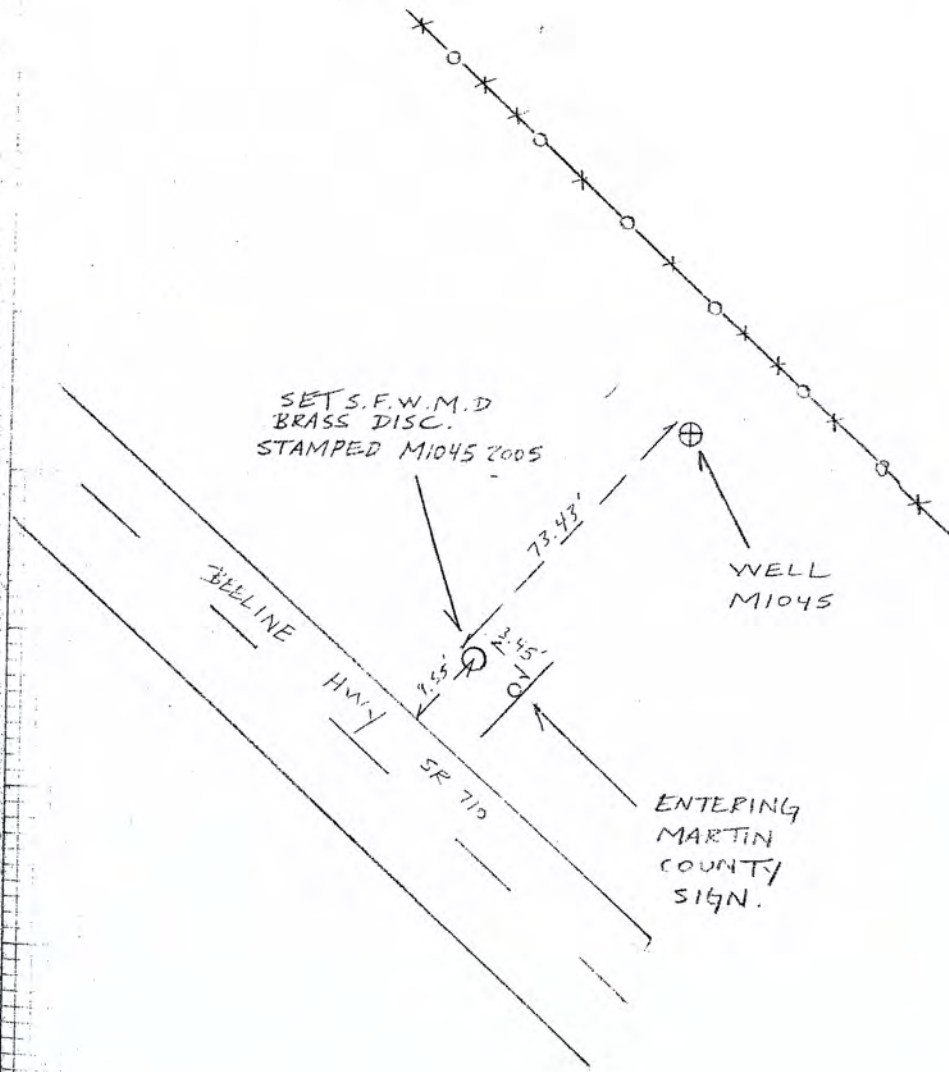
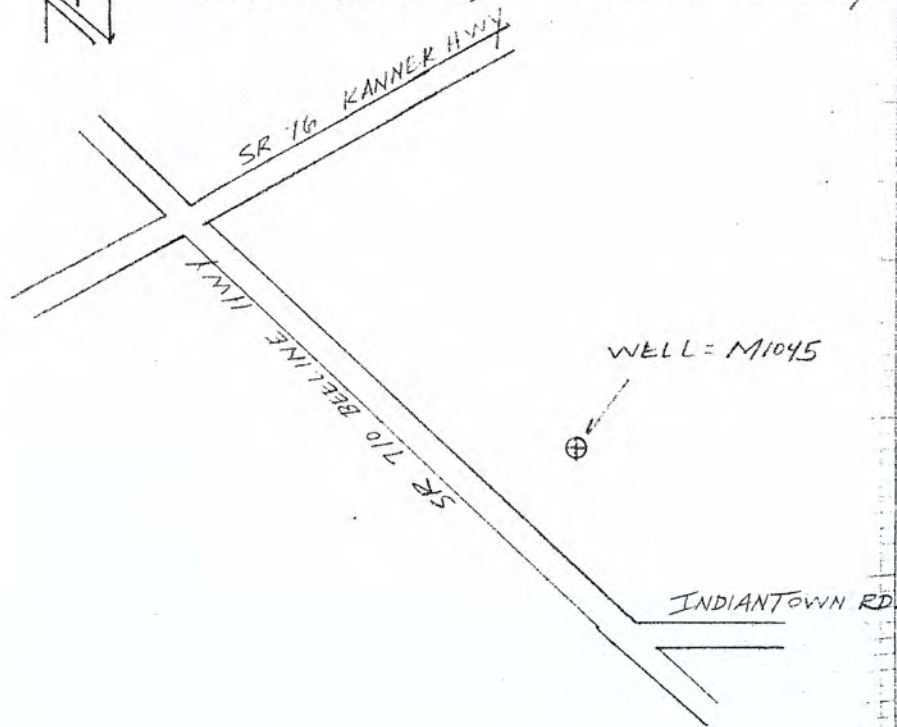
#03-77478
S.F.W.M.D.

2548 / 58

9/6/05

(SITE - J
DESCRIPTION)

DIRECTIONS - FROM THE INTERSECTION
OF BEELINE HWY (SR 710)
AND KANNER HWY (SR 16),
TRAVEL SOUTHEAST ON
BEELINE HWY FOR 6.05 MILES.
THE WELL IS ON THE LEFT
BY THE SIGN, ENTERING
MARTIN COUNTY, 83.00' FT.
NORTHEAST OF EDGE OF
PAVEMENT, OF BEELINE HWY.

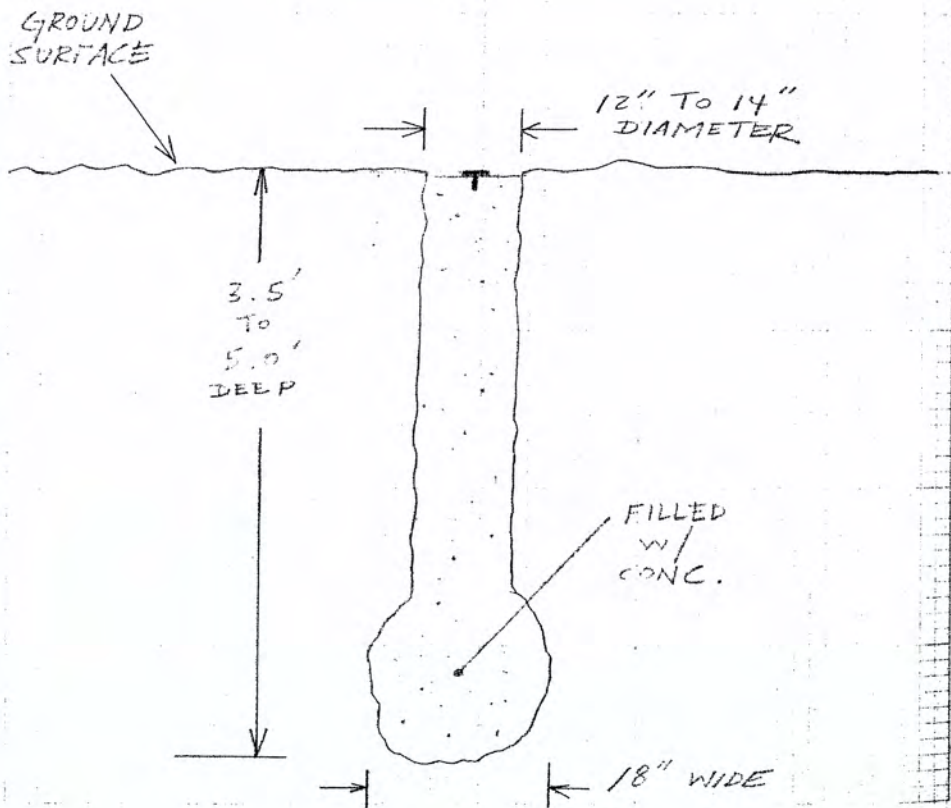


A. REDERO
T. LOPEZ
M. MORA

#100-1011F
S.F. W.M.D.

9/12/05

NOTE: ALL CONCRETE MONUMENTS
WERE SET ACCORDING TO
NGS STANDARDS.





SOUTH FLORIDA WATER MANAGEMENT DISTRICT

Rev. 10/10/05

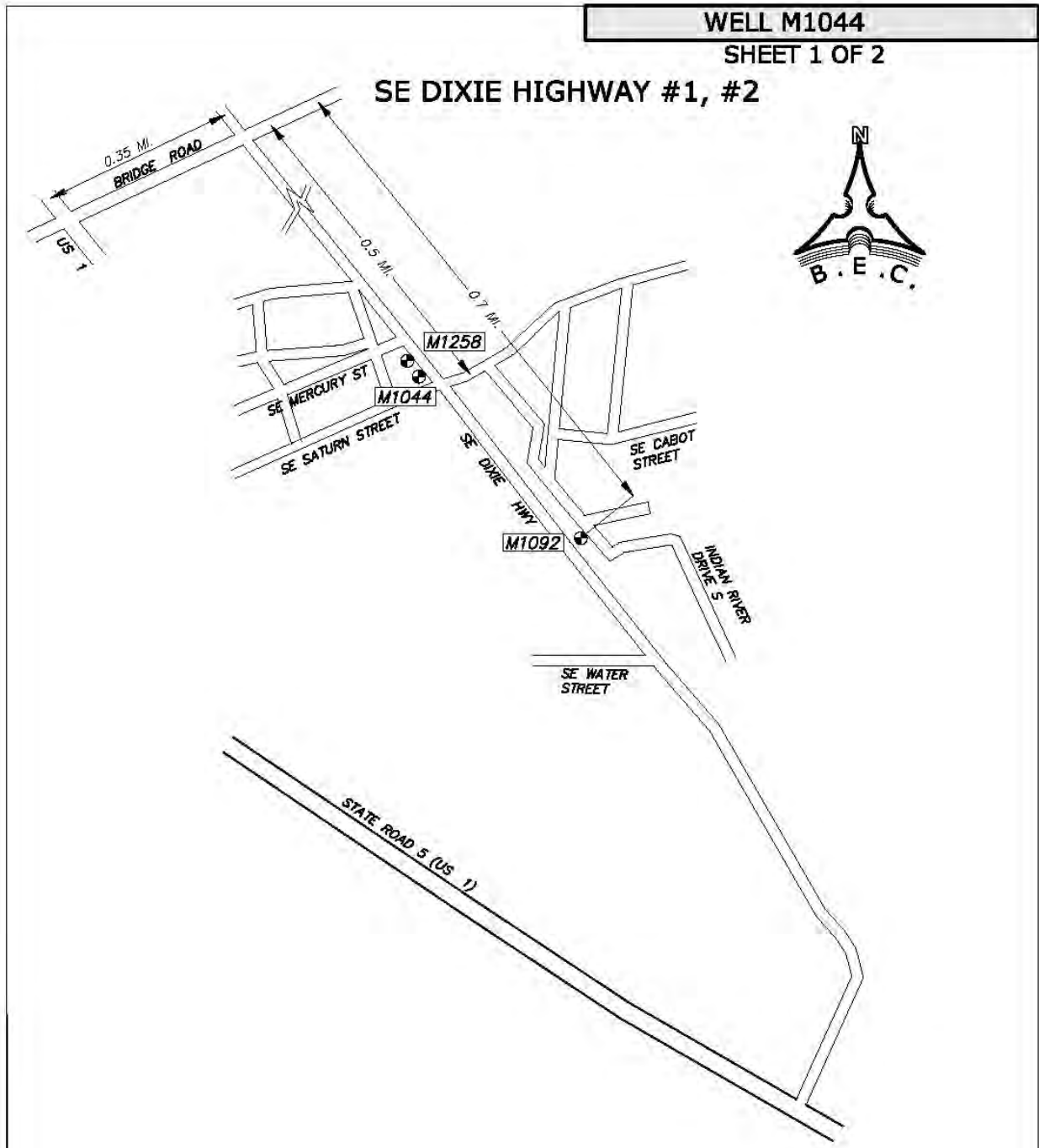
COUNTY	MARTIN	PROJECT	SE DIXIE HWY	DESIGNATION	M1044 2005
SECTION	<u>GOMEZ GRANT</u>	TOWNSHIP	----	RANGE	----
GEOGRAPHIC INDEX OF QUAD <u>Florida</u>					
Established by Biscayne Engineering Company, Inc.			NAME OF QUADRANGLE <u>GOMEZ</u>		
SURVEYOR <u>Mike J. Bartholomew</u> DATE <u>09 / 26 / 2005</u>			FIELD BOOK <u>2548</u> PAGE <u>24</u>		
HORIZONTAL DATUM: 1927 <input type="checkbox"/> 1983 <input checked="" type="checkbox"/> Other _____ (circle one) ZONE <u>0901 (EAST)</u>					
VERTICAL DATUM: MSL <input type="checkbox"/> 1929 <input checked="" type="checkbox"/> 1988 <input checked="" type="checkbox"/> Other _____ (circle one)					
CONTROL ACCURACY: HORIZONTAL 1 <input type="checkbox"/> 2 <input type="checkbox"/> 3 <input checked="" type="checkbox"/> SUB-METER (circle one) VERTICAL 1 <input type="checkbox"/> 2 <input type="checkbox"/> 3 <input checked="" type="checkbox"/>					
STATE PLANE COORDINATES <u>M1044</u> (U.S. Survey feet)		X= <u>940757.38</u>		Y= <u>990517.44</u> DISC EL.= <u>9.26'</u> (NAVD-88)	
LATITUDE M1044 <u>27°03'21.617"N</u>			LONGITUDE <u>080°07'32.120"W</u>		
DESCRIPTION					
Benchmark is situated South of S.E. Bridge Road (S.R. 708), North of Jonathan Dickinson State Park, East of U.S. 1 (S.E. Federal Highway), in the Gomez Grant, Martin County, Florida					
TO REACH the benchmark from the intersection of Bridge Road (S.R. 708) and U.S. 1 (S.E. Federal Highway), travel East on Bridge Road for 0.35 miles to the intersection with A1A (S.E. Dixie Highway). Turn right and proceed South on A1A for 0.5 miles to Saturn Street, and the benchmark on the right. Benchmark is situated 83 feet (more or less) North of the centerline of Saturn Street and 22 feet (more or less) West of the centerline of A1A in a grass median. Benchmark is a standard SFWMD set in concrete and stamped "M1044 2005", lying 2.7 feet South of well M1258					
Origin of NAVD88 elevation for BM "M1044" is a closed bench level circuit through NGS benchmarks AF3053 (U 224 1965) and AF7531 (C 403 1991)					

SKETCH: SEE PAGE 2 and 3



SOUTH FLORIDA WATER MANAGEMENT DISTRICT

Rev. 10/10/05



WELL M1044
SHEET 1 OF 2

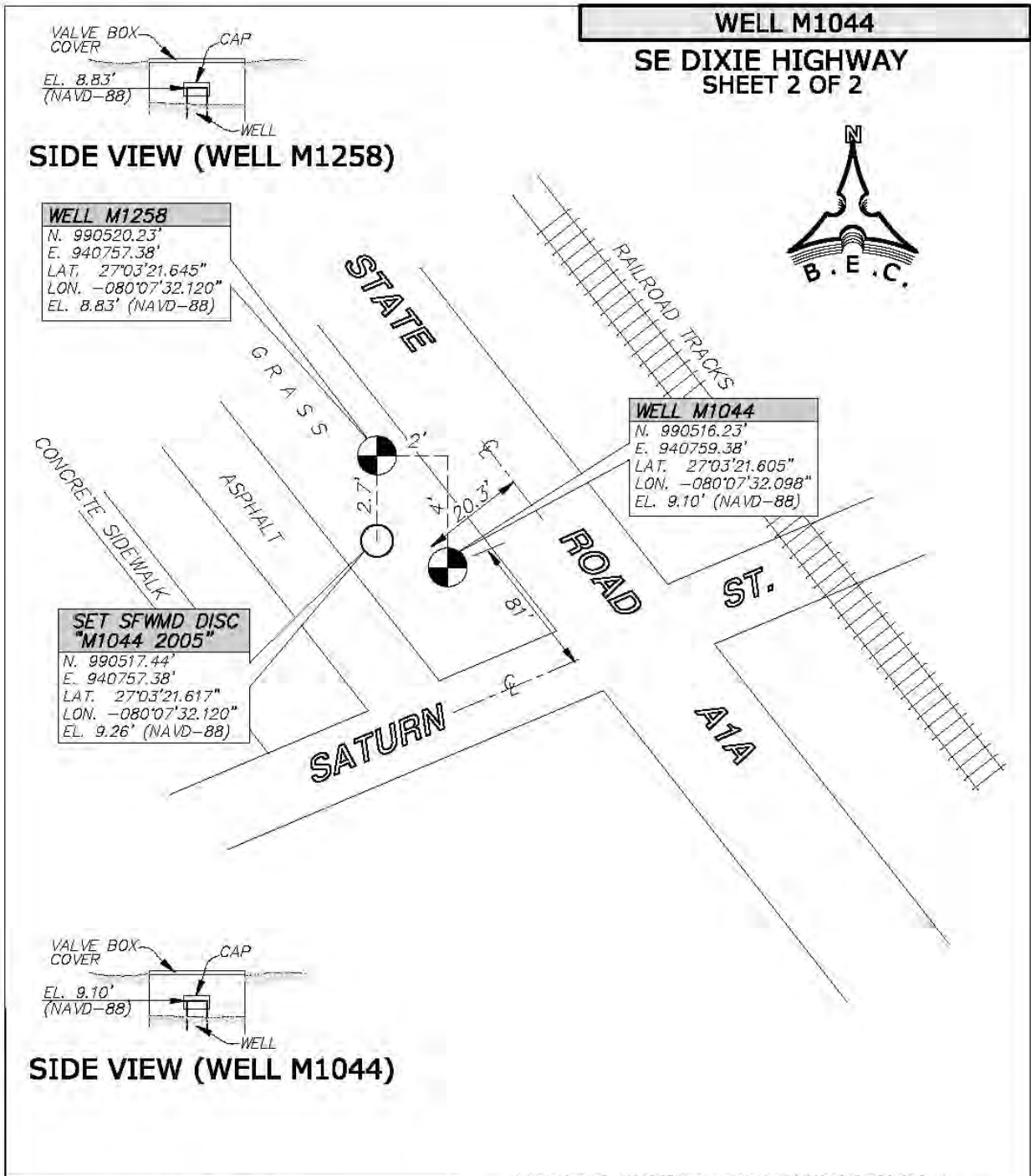
SE DIXIE HIGHWAY #1, #2



WELL M1044

MARTIN COUNTY TAPE DOWN WELLS

PREPARED FOR: SOUTH FLORIDA WATER MANAGEMENT DISTRICT		FIELD BOOK: 2548	DATE: 10/10/05	ORDER NO.: 03-77478
		PREPARED BY: BISCAYNE ENGINEERING COMPANY, INC. Consulting Engineers Planners Surveyors 529 WEST FLAGLER STREET, MIAMI, FL. 33130 - TEL (305)324-7671 - FAX (305)324-0809 LB #0129		



WELL M1044		MARTIN COUNTY TAPE DOWN WELLS	
PREPARED FOR:		FIELD BOOK: 2548	DATE: 10/10/05
<p>SOUTH FLORIDA WATER MANAGEMENT DISTRICT</p>		ORDER NO.: 03-77478	PREPARED BY:
		<p>BISCAYNE ENGINEERING COMPANY, INC. Consulting Engineers Planners Surveyors 529 WEST FLAGLER STREET, MIAMI, FL. 33130 - TEL (305)324-7671 - FAX (305)324-0809 LB #0129</p>	

The NGS Data Sheet

See file [dsdata.txt](#) for more information about the datasheet.

DATABASE = Sybase ,PROGRAM = datasheet, VERSION = 7.27

1 National Geodetic Survey, Retrieval Date = SEPTEMBER 20, 2005

AF3053 *****

AF3053 DESIGNATION - U 224

AF3053 PID - AF3053

AF3053 STATE/COUNTY- FL/MARTIN

AF3053 USGS QUAD - HOBE SOUND (1983)

AF3053

AF3053 *CURRENT SURVEY CONTROL

AF3053

AF3053* NAD 83(1986)- 27 03 13. (N) 080 07 23. (W) SCALED

AF3053* NAVD 88 - 2.415 (meters) 7.92 (feet) ADJUSTED

AF3053

AF3053 GEOID HEIGHT- -27.63 (meters) GEOID03

AF3053 DYNAMIC HT - 2.411 (meters) 7.91 (feet) COMP

AF3053 MODELED GRAV- 979,097.3 (mgal) NAVD 88

AF3053

AF3053 VERT ORDER - FIRST CLASS I

AF3053

AF3053.The horizontal coordinates were scaled from a topographic map and have
AF3053.an estimated accuracy of +/- 6 seconds.

AF3053

AF3053.The orthometric height was determined by differential leveling
AF3053.and adjusted by the National Geodetic Survey in May 1994.

AF3053

AF3053.The geoid height was determined by GEOID03.

AF3053

AF3053.The dynamic height is computed by dividing the NAVD 88

AF3053.geopotential number by the normal gravity value computed on the
AF3053.Geodetic Reference System of 1980 (GRS 80) ellipsoid at 45

AF3053.degrees latitude (g = 980.6199 gals.).

AF3053

AF3053.The modeled gravity was interpolated from observed gravity values.

AF3053

AF3053; North East Units Estimated Accuracy

AF3053;SPC FL E - 301,650. 287,000. MT (+/- 180 meters Scaled)

AF3053

AF3053 SUPERSEDED SURVEY CONTROL

AF3053

AF3053 NAVD 88 (06/15/91) 2.442 (m) 8.01 (f) UNKNOWN 1 1

AF3053 NGVD 29 (09/01/92) 2.869 (m) 9.41 (f) ADJUSTED 1 1

AF3053

AF3053.Superseded values are not recommended for survey control.

AF3053.NGS no longer adjusts projects to the NAD 27 or NGVD 29 datums.

AF3053.[See file dsdata.txt](#) to determine how the superseded data were derived.

AF3053

AF3053_U.S. NATIONAL GRID SPATIAL ADDRESS: 17RNK869926(NAD 83)

AF3053_MARKER: DB = BENCH MARK DISK

AF3053_SETTING: 7 = SET IN TOP OF CONCRETE MONUMENT

AF3053_SP_SET: CONCRETE POST

AF3053_STAMPING: U 224 1965

AF3053_MARK LOGO: CGS

AF3053_STABILITY: C = MAY HOLD, BUT OF TYPE COMMONLY SUBJECT TO

AF3053+STABILITY: SURFACE MOTION

AF3053_SATELLITE: THE SITE LOCATION WAS REPORTED AS SUITABLE FOR

AF3053+SATELLITE: SATELLITE OBSERVATIONS - November 10, 2003

AF3053

AF3053	HISTORY	- Date	Condition	Report By
AF3053	HISTORY	- 1965	MONUMENTED	CGS
AF3053	HISTORY	- 1970	GOOD	NGS
AF3053	HISTORY	- 1973	GOOD	NGS
AF3053	HISTORY	- 1988	GOOD	USPSQD
AF3053	HISTORY	- 1989	GOOD	USPSQD
AF3053	HISTORY	- 1990	GOOD	USPSQD
AF3053	HISTORY	- 19910124	GOOD	NGS
AF3053	HISTORY	- 20031110	GOOD	USPSQD

AF3053

AF3053 STATION DESCRIPTION

AF3053

AF3053'DESCRIBED BY NATIONAL GEODETIC SURVEY 1970

AF3053'AT HOBE SOUND.

AF3053'AT HOBE SOUND, ABOUT 0.65 MILE SOUTHEAST ALONG THE FLORIDA EAST

AF3053'COAST RAILWAY FROM THE CROSSING OF STATE HIGHWAY 707, ABOUT

AF3053'0.35 MILE SOUTHEAST ALONG STATE HIGHWAY A 1 A FROM THE POST

AF3053'OFFICE, 7 1/2 RAILS NORTHWEST OF THE CENTER OF THE CROSSING OF

AF3053'A PAVED ROAD, 85 FEET NORTHEAST AND ACROSS THE TRACK FROM THE

AF3053'NORTH CORNER OF A ONE-STORY CONCRETE BLOCK BUILDING MARKED

AF3053'VILLAGE PLAZA, 35 FEET NORTHEAST OF THE CENTER LINE OF STATE

AF3053'HIGHWAY A 1 A, 30 FEET SOUTHWEST OF THE SOUTHWEST RAIL, 1.6 FEET

AF3053'NORTHWEST OF A METAL WITNESS POST, 1 FOOT BELOW THE LEVEL OF

AF3053'THE TRACK, AND SET IN THE TOP OF A CONCRETE POST WHICH PROJECTS

AF3053'3 INCHES ABOVE THE LEVEL OF THE GROUND.

AF3053

AF3053 STATION RECOVERY (1973)

AF3053

AF3053'RECOVERY NOTE BY NATIONAL GEODETIC SURVEY 1973

AF3053'RECOVERED IN GOOD CONDITION.

AF3053

AF3053 STATION RECOVERY (1988)

AF3053

AF3053'RECOVERY NOTE BY US POWER SQUADRON 1988 (RBS)

AF3053'RECOVERED IN GOOD CONDITION.

AF3053

AF3053 STATION RECOVERY (1989)

AF3053

AF3053'RECOVERY NOTE BY US POWER SQUADRON 1989 (DHF)

AF3053'RECOVERED IN GOOD CONDITION.

AF3053

AF3053 STATION RECOVERY (1990)

AF3053

AF3053'RECOVERY NOTE BY US POWER SQUADRON 1990 (DHF)

AF3053'RECOVERED IN GOOD CONDITION.

AF3053

AF3053 STATION RECOVERY (1991)

AF3053

AF3053'RECOVERY NOTE BY NATIONAL GEODETIC SURVEY 1991

AF3053'1.1 KM (0.7 MI) SOUTHEASTERLY ALONG STATE HIGHWAY A1A (DIXIE HIGHWAY)

AF3053'FROM THE JUNCTION OF COUNTY ROAD 708 (SOUTHEAST BRIDGE ROAD) IN HOBE

AF3053'SOUND, 25.9 M (85.0 FT) NORTHEAST OF THE NORTH CORNER OF THE CLOUD

AF3053'900 BUILDING, 19.7 M (64.6 FT) EAST OF A 24-INCH PINE TREE (1991),

AF3053'13.0 M (42.7 FT) SOUTHWEST OF THE NEAR RAIL OF THE FLORIDA EAST COAST

AF3053'RAILROAD, 10.7 M (35.1 FT) NORTHEAST OF AND LEVEL WITH THE HIGHWAY

AF3053'CENTERLINE, 6.2 M (20.3 FT) NORTHEAST OF A UTILITY POLE, 0.3 M (1.0

AF3053'FT) SOUTHWEST OF A WITNESS POST, AND THE MONUMENT IS FLUSH WITH THE
AF3053'GROUND SURFACE.

AF3053

AF3053

STATION RECOVERY (2003)

AF3053

AF3053'RECOVERY NOTE BY US POWER SQUADRON 2003 (AEP)

AF3053'WITNESS POST MISSING. PAVED ROAD NO LONGER CROSSES TRACKS. CONCRETE

AF3053'BLOCK BUILDING IS NUMBER 12230. MARK IS 21 FEET NORTHEAST OF WOODEN

AF3053'POLE SUPPORTING TELEPHONE LINES.

AF3053'

*** retrieval complete.

Elapsed Time = 00:00:00

The NGS Data Sheet

See file [dsdata.txt](#) for more information about the datasheet.

DATABASE = Sybase ,PROGRAM = datasheet, VERSION = 7.27

1 National Geodetic Survey, Retrieval Date = SEPTEMBER 20, 2005

AF7531 *****

AF7531 DESIGNATION - C 403

AF7531 PID - AF7531

AF7531 STATE/COUNTY- FL/MARTIN

AF7531 USGS QUAD - GOMEZ (1983)

AF7531

AF7531 *CURRENT SURVEY CONTROL

AF7531

AF7531* NAD 83(1999)- 27 03 42.15135(N) 080 07 48.12002(W) ADJUSTED

AF7531* NAVD 88 - 5.486 (meters) 18.00 (feet) ADJUSTED

AF7531

AF7531 X - 974,268.504 (meters) COMP

AF7531 Y - -5,599,635.575 (meters) COMP

AF7531 Z - 2,884,296.152 (meters) COMP

AF7531 LAPLACE CORR- -4.26 (seconds) DEFLEC99

AF7531 ELLIP HEIGHT- -22.14 (meters) (12/12/02) GPS OBS

AF7531 GEOID HEIGHT- -27.62 (meters) GEOID03

AF7531 DYNAMIC HT - 5.477 (meters) 17.97 (feet) COMP

AF7531 MODELED GRAV- 979,098.1 (mgal) NAVD 88

AF7531

AF7531 HORZ ORDER - FIRST

AF7531 VERT ORDER - FIRST CLASS II

AF7531 ELLP ORDER - FOURTH CLASS I

AF7531

AF7531.The horizontal coordinates were established by GPS observations

AF7531.and adjusted by the National Geodetic Survey in December 2002.

AF7531

AF7531.The orthometric height was determined by differential leveling

AF7531.and adjusted by the National Geodetic Survey in May 1994.

AF7531

AF7531.The X, Y, and Z were computed from the position and the ellipsoidal ht.

AF7531

AF7531.The Laplace correction was computed from DEFLEC99 derived deflections.

AF7531

AF7531.The ellipsoidal height was determined by GPS observations

AF7531.and is referenced to NAD 83.

AF7531

AF7531.The geoid height was determined by GEOID03.

AF7531

AF7531.The dynamic height is computed by dividing the NAVD 88

AF7531.geopotential number by the normal gravity value computed on the

AF7531.Geodetic Reference System of 1980 (GRS 80) ellipsoid at 45

AF7531.degrees latitude (g = 980.6199 gals.).

AF7531

AF7531.The modeled gravity was interpolated from observed gravity values.

AF7531

AF7531; North East Units Scale Factor Converg.

AF7531;SPC FL E - 302,539.304 286,298.143 MT 1.00003308 +0 23 44.9

AF7531;UTM 17 - 2,993,568.061 586,268.698 MT 0.99969187 +0 23 44.9

AF7531

AF7531! - Elev Factor x Scale Factor = Combined Factor

AF7531!SPC FL E - 1.00000348 x 1.00003308 = 1.00003656
 AF7531!UTM 17 - 1.00000348 x 0.99969187 = 0.99969535

AF7531

AF7531 SUPERSEDED SURVEY CONTROL

AF7531

AF7531	NAVD 88 (12/12/02)	5.49	(m)	18.0	(f)	LEVELING	3
AF7531	NGVD 29 (09/01/92)	5.942	(m)	19.49	(f)	ADJUSTED	1 2

AF7531

AF7531.Superseded values are not recommended for survey control.

AF7531.NGS no longer adjusts projects to the NAD 27 or NGVD 29 datums.

AF7531.[See file dsdata.txt](#) to determine how the superseded data were derived.

AF7531

AF7531_U.S. NATIONAL GRID SPATIAL ADDRESS: 17RNK8626993568(NAD 83)

AF7531_MARKER: F = FLANGE-ENCASED ROD

AF7531_SETTING: 49 = STAINLESS STEEL ROD W/O SLEEVE (10 FT.+)

AF7531_SP_SET: STAINLESS STEEL ROD

AF7531_STAMPING: C 403 1991

AF7531_MARK LOGO: NGS

AF7531_PROJECTION: FLUSH

AF7531_MAGNETIC: M = MARKER EQUIPPED WITH BAR MAGNET

AF7531_STABILITY: B = PROBABLY HOLD POSITION/ELEVATION WELL

AF7531_SATELLITE: THE SITE LOCATION WAS REPORTED AS SUITABLE FOR

AF7531+SATELLITE: SATELLITE OBSERVATIONS - May 14, 2002

AF7531_ROD/PIPE-DEPTH: 15.2 meters

AF7531

HISTORY	Date	Condition	Report By
AF7531	1991	MONUMENTED	NGS
AF7531	20010718	GOOD	GCYI
AF7531	20020514	GOOD	MAPTEC

AF7531

AF7531 STATION DESCRIPTION

AF7531

AF7531'DESCRIBED BY NATIONAL GEODETIC SURVEY 1991

AF7531'IN HOBE SOUND, AT THE INTERSECTION OF STATE HIGHWAY A1A AND COUNTY

AF7531'ROAD 707, 45.0 M (147.6 FT) NORTHEAST OF THE HIGHWAY CENTERLINE, 5.2

AF7531'M (17.1 FT) SOUTHEAST OF AND LEVEL WITH THE ROAD CENTER, AND 0.4 M

AF7531'(1.3 FT) SOUTHEAST OF UTILITY POLE NUMBER 6-7648-6248-0-1 AND A

AF7531'WITNESS POST. NOTE--ACCESS TO THE DATUM POINT IS THROUGH A 5-INCH

AF7531'LOGO CAP.

AF7531

AF7531 STATION RECOVERY (2001)

AF7531

AF7531'RECOVERY NOTE BY G.C.Y., INCORPORATED 2001 (PA)

AF7531'RECOVERED AS DESCRIBED.

AF7531'

AF7531

AF7531 STATION RECOVERY (2002)

AF7531

AF7531'RECOVERY NOTE BY MAPTECH INCORPORATED 2002 (CDP)

AF7531'RECOVERED AS DESCRIBED.

AF7531'

*** retrieval complete.

Elapsed Time = 00:00:00

The NGS Data Sheet

See file [dsdata.txt](#) for more information about the datasheet.

DATABASE = Sybase ,PROGRAM = datasheet, VERSION = 7.27

1 National Geodetic Survey, Retrieval Date = SEPTEMBER 20, 2005

AJ5261 *****

AJ5261 DESIGNATION - GCY D19

AJ5261 PID - AJ5261

AJ5261 STATE/COUNTY- FL/MARTIN

AJ5261 USGS QUAD - GOMEZ (1983)

AJ5261

AJ5261 *CURRENT SURVEY CONTROL

AJ5261

AJ5261* NAD 83(1999)- 27 04 56.28433(N) 080 08 47.09898(W) ADJUSTED

AJ5261* NAVD 88 - 7.675 (meters) 25.18 (feet) ADJUSTED

AJ5261

AJ5261 X - 972,489.945 (meters) COMP

AJ5261 Y - -5,598,892.752 (meters) COMP

AJ5261 Z - 2,886,328.902 (meters) COMP

AJ5261 LAPLACE CORR- -4.03 (seconds) DEFLEC99

AJ5261 ELLIP HEIGHT- -19.92 (meters) (09/27/01) GPS OBS

AJ5261 GEOID HEIGHT- -27.62 (meters) GEOID03

AJ5261 DYNAMIC HT - 7.663 (meters) 25.14 (feet) COMP

AJ5261 MODELED GRAV- 979,100.1 (mgal) NAVD 88

AJ5261

AJ5261 HORZ ORDER - FIRST

AJ5261 VERT ORDER - FIRST CLASS II

AJ5261 ELLP ORDER - FOURTH CLASS II

AJ5261

AJ5261.The horizontal coordinates were established by GPS observations

AJ5261.and adjusted by the National Geodetic Survey in September 2001.

AJ5261

AJ5261.The orthometric height was determined by differential leveling

AJ5261.and adjusted by the National Geodetic Survey in November 2001.

AJ5261

AJ5261.The X, Y, and Z were computed from the position and the ellipsoidal ht.

AJ5261

AJ5261.The Laplace correction was computed from DEFLEC99 derived deflections.

AJ5261

AJ5261.The ellipsoidal height was determined by GPS observations

AJ5261.and is referenced to NAD 83.

AJ5261

AJ5261.The geoid height was determined by GEOID03.

AJ5261

AJ5261.The dynamic height is computed by dividing the NAVD 88

AJ5261.geopotential number by the normal gravity value computed on the

AJ5261.Geodetic Reference System of 1980 (GRS 80) ellipsoid at 45

AJ5261.degrees latitude (g = 980.6199 gals.).

AJ5261

AJ5261.The modeled gravity was interpolated from observed gravity values.

AJ5261

AJ5261;

	North	East	Units	Scale	Factor	Converg.
AJ5261;SPC FL E	- 304,809.942	284,657.450	MT	1.00002962	+0 23 19.1	
AJ5261;UTM 17	- 2,995,837.923	584,628.565	MT	0.99968841	+0 23 19.1	

AJ5261

AJ5261! - Elev Factor x Scale Factor = Combined Factor

AJ5261!SPC FL E - 1.00000313 x 1.00002962 = 1.00003275
 AJ5261!UTM 17 - 1.00000313 x 0.99968841 = 0.99969154

AJ5261

AJ5261: Primary Azimuth Mark Grid Az
 AJ5261:SPC FL E - GCY D18 322 34 52.6
 AJ5261:UTM 17 - GCY D18 322 34 52.6

AJ5261

PID	Reference Object	Distance	Geod. Az
			ddmmss.s
AJ5260	GCY D18	APPROX. 0.8 KM	3225811.7

AJ5261

AJ5261 SUPERSEDED SURVEY CONTROL

AJ5261

AJ5261.No superseded survey control is available for this station.

AJ5261

AJ5261_U.S. NATIONAL GRID SPATIAL ADDRESS: 17RNK8462995838(NAD 83)

AJ5261_MARKER: DH = HORIZONTAL CONTROL DISK

AJ5261_SETTING: 7 = SET IN TOP OF CONCRETE MONUMENT

AJ5261_STAMPING: GCY D19 2001

AJ5261_MARK LOGO: FL-085

AJ5261_PROJECTION: FLUSH

AJ5261_MAGNETIC: M = MARKER EQUIPPED WITH BAR MAGNET

AJ5261_STABILITY: C = MAY HOLD, BUT OF TYPE COMMONLY SUBJECT TO

AJ5261+STABILITY: SURFACE MOTION

AJ5261_SATELLITE: THE SITE LOCATION WAS REPORTED AS SUITABLE FOR

AJ5261+SATELLITE: SATELLITE OBSERVATIONS - July 18, 2001

AJ5261

HISTORY	Date	Condition	Report By
AJ5261 HISTORY	- 20010517	MONUMENTED	GCYI
AJ5261 HISTORY	- 20010718	GOOD	GCYI

AJ5261

AJ5261 STATION DESCRIPTION

AJ5261

AJ5261'DESCRIBED BY G.C.Y., INCORPORATED 2001 (MDL)

AJ5261'THE STATION IS LOCATED 16.5 KM (10.2 MI) SOUTHEAST OF STUART AND 2.8

AJ5261'KM (1.7

AJ5261'MI) NORTHWEST OF HOBE SOUND NEAR THE EASTERLY RIGHT OF- WAY OF U.S.

AJ5261'HIGHWAY 1 IN THE GOMEZ GRANT, MARTIN COUNTY, FLORIDA.

AJ5261'

AJ5261'TO REACH THE STATION FROM THE INTERSECTION OF U.S. HIGHWAY 1 AND C.R.

AJ5261'708

AJ5261'IN HOBE SOUND, GO NORTHWEST ON U.S. HIGHWAY 1, 2.7 KM (1.7 MI) TO THE

AJ5261'STATION ON THE LEFT.

AJ5261'

AJ5261'STATION IS LOCATED IN FRONT OF THE POST OFFICE IN HOBE SOUND, 10.44 M

AJ5261'(34.25FT) NORTHEAST OF THE NORTHEASTERLY EDGE OF PAVEMENT OF THE

AJ5261'NORTHBOUND LANES OF U.S. HIGHWAY 1 AND 1.25 M (4.10 FT) SOUTHWEST OF A

AJ5261'CARSONITE WITNESS POST AND WEST OF A CONCRETE SIDEWALK.

AJ5261'REFERENCES-

AJ5261'GCY, INC. MAG NAIL AND WASHER IN EASTERLY EDGE OF PAVEMENT OF U.S.

AJ5261'HIGHWAY 1-294 DEG. MAG. AZ.-14.55 M (47.75 FT)

AJ5261'GCY, INC. MAG NAIL AND WASHER IN EASTERLY EDGE OF PAVEMENT OF U.S.

AJ5261'HIGHWAY 1-231 DEG. MAG. AZ. - 10.00 M (32.80 FT)

AJ5261'CONCRETE POWER POLE - 167 DEG MAG. AZ. - 46.33 M (152.0 FT).

AJ5261'GCY, INC. MAG NAIL AND WASHER IN WESTERLY EDGE OF PAVEMENT OF POST

AJ5261'OFFICE ROAD-69 DEG MAG AZ-3.55 M (11.65 FT)

AJ5261'GCY, INC. MAG NAIL AND WASHER IN WESTERLY EDGE OF PAVEMENT OF POST

AJ5261'OFFICE ROAD-116 DEG MAG AZ-5.46 M (17.90 FT)

AJ5261'
AJ5261'NOTE-
AJ5261'DEEP ONE MAGNET BURIED AT NORTH SIDE OF MONUMENT.
AJ5261'
AJ5261'
AJ5261
AJ5261 STATION RECOVERY (2001)
AJ5261
AJ5261'RECOVERY NOTE BY G.C.Y., INCORPORATED 2001 (MDL)
AJ5261'RECOVERED AS DESCRIBED.
AJ5261'
AJ5261'
AJ5261'
AJ5261'
AJ5261'
AJ5261'

*** retrieval complete.
Elapsed Time = 00:00:00

LEVEL RUN

DATE	STA	BS	MEAN	HI	FS	MEAN	ELEV	BM ELEV. NAVD-88	NOTES
08/08/05	NGS BM	6.57							
(FB 2548,	AF3053	5.31	5.31	13.23				7.92	
PG 24...)	U 224	4.05							
					5.09				
	TP#1				3.74	3.74	8.92		
					2.39				
		7.74							
	SHAKE	6.15	6.15	15.07					
		4.56							
					6.29				
	TP#2				4.91	4.91	10.16		
					3.52				
		5.54							
	SHAKE	4.68	4.68	14.84					
		3.82							
	WELL				6.52				TOP OF PIPE
	M1258				5.75	5.75	8.83		WELL
					4.98				M 1258
		7.32							
	SHAKE	6.02	6.02	14.85					
		4.72							
					7.16				
	TP#3				5.40	5.40	9.45		
					3.64				
		6.75							
	SHAKE	5.23	5.23	14.68					
		3.71							
					6.57				
	TP#4				4.55	4.55	10.13		
					2.53				
		8.34							
	SHAKE	6.81	6.81	16.94					
		5.27							
					4.26				
	TP#5				2.50	2.50	14.44		
					0.73				
		9.01							
	SHAKE	7.47	7.47	21.91					
		5.93							
	NGS BM				5.22				ERROR
	AF7531				3.91	3.91	18.00	18.00	0.000
	C 403				2.60				

LEVEL RUN

DATE	STA	BS	MEAN	HI	FS	MEAN	ELEV	BM ELEV.	NOTES
								NAVD-88	
		6.16							TOP OF PIPE
	WELL	5.30	5.30	14.40				9.10	WELL
	M 1044	4.43							M 1044
	BM				6.01				SET SFWMD
	DISC				5.14	5.14	9.26		DISC STAMPED
	M 1044				4.26				M 1044 2005
		6.30							
	SHAKE	5.43	5.43	14.69					
		4.56							
(FB 2548,	BM				5.26				ERROR
PG 27)	TP#2				4.53	4.53	10.16	10.16	0.000
08/08/05					3.80				