

TIE TO WELLS M-1259 + M 1260 CONT'D FROM Pg. 17

STA	+	HI	-	ELEV	BM ELEV
BM					16.11
		3.82			
		3.44		19.93	
WELL# M 1260				5.20	14.73
				2.06	
		5.36			
		1.90		20.09	
WELL# M 1259				5.22	14.87
				2.04	
		4.52			
		2.74		19.39	
BM				3.28	16.11
				3.98	16.11

COMMENTS

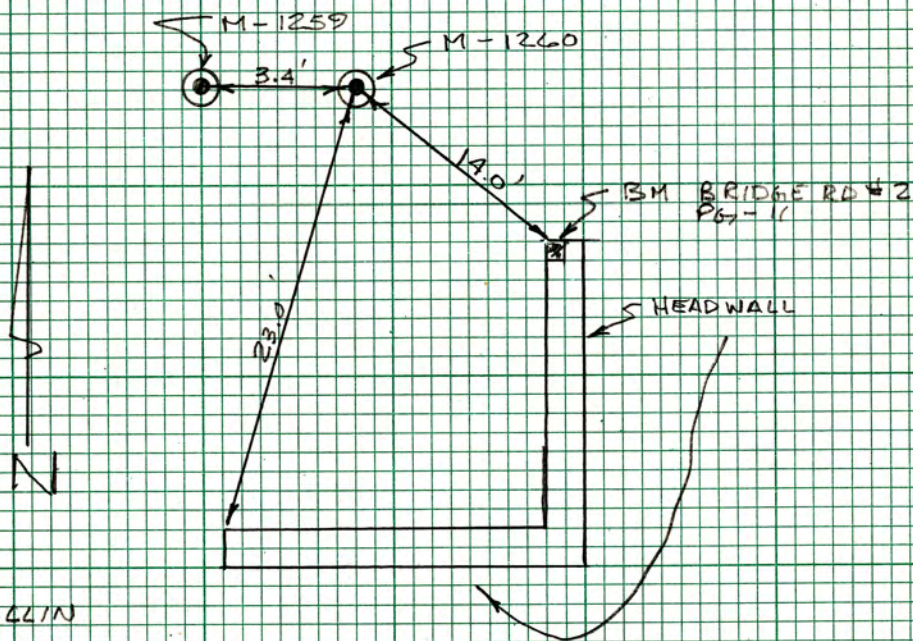
BM BRIDGE RD # 2 SEE Pg. 15

TOP + N. SIDE OF E. MOST 2" PVC WELL IN 12" ROUND GREEN IRR BOX. ELEV IS A X-MARK ON TOP OF 2" PVC PIPE WHICH IS 0.4' BELOW GRND LEVEL. WELL IS 2.1 MI WEST OF US-1 ON BRIDGE RD ON N.W. SIDE OF PAVED RD 14.0' N.W. OF THE N. END OF A N. + S ENDWALL W/ BM BRIDGE # 2 + 23.0' N. OF A E/W END WALL

**M-1259** TOP + N- SIDE OF W. MOST 2" PVC WELL IN 12" ROUND GREEN IRR BOX ELEV IS A X-MARK ON TOP OF 2" PVC PIPE WHICH IS 0.5' BELOW GRND LEVEL. WELL IS 3.4' W. OF

**WELL # M-1260**

SEE SKETCH ON Pg. 15 FOR LOCATION



HOLLIN  
PINDER  
STRICKLAND  
VANDEGRIFT

SEG - 29 TWP 39 R6E42



MARTIN CO WELL LEVELS FR# 9 2/28/89

LEVELS TO WELLS M-1259 + M-1260					
STA	+	H I	-	ELEV	BM/ELEV
BM					9.52
	6.00	15.52			
	1.26				
TP			4.20	11.32	
			3.06		
	5.56	16.88			
	1.70				
TP			5.76	11.12	
			1.50		
	5.43	16.55			
	1.88				
TP			2.41	14.12	
			4.85		
	8.72	22.86			
	4.54				
TP			4.26	18.60	
			3.00		
	8.48	27.08			
	4.78				
TP			1.17	25.91	
			6.09		
	6.22	32.13			
	1.04				
TP			9.20	22.93	
			4.06		
	3.90	26.83			
	3.36				

CONT'D <sup>ON</sup> FROM Page 6

MARTIN CO WELL LEVELS FR# 9 02/28/89 MS 5

COMMENTS

BM USCGS MON. U-224 1965 IN GOOD CONDITION  
RECOVERED AS DESCRIBED ELEV 9.524

U224 (AF3053  
7.92321249999' (2.415m) NAVD88  
9.4159916666' (2.870m) NGVD29  
superseded value  
9.52425916666' (2.903m) NGVD29



MARTIN CO WELL LEVELS FB# 9 02/28/89

CONT'D FROM Pg-5

STA	F	H I	-	ELEV	BMELEV
TP		26.83	1.83 5.38	24.95	
	6.95 0.31	31.90			
TP			4.66 2.60	27.24	
	6.25 1.01	33.49			
TP			6.39 0.87	27.10	
	4.09 3.17	31.19			
TP			4.12 3.14	27.07	
	5.24 2.02	32.31			
TP			7.20 0.06	25.11	
	4.53 2.73	29.64			
TP			5.56 1.70	24.08	
	4.84 2.92	28.92			
TP			4.72 2.54	24.20	
	5.54 1.72	29.74			

CONT'D ON Pg-7

MARTIN CO WELL LEVELS FB# 9 02/28/89

MSG

COMMENTS

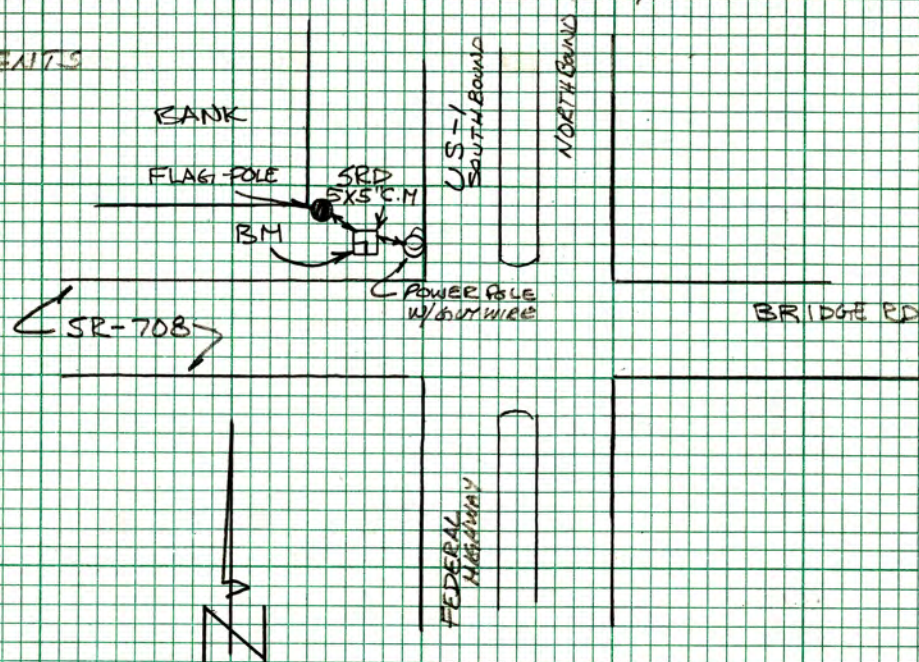


CONT'D FROM PG. 6

STA	+	H I	-	ELEV	BM/ELEV
TP		29.74	4.50	25.24	
	5.38		2.76		
	1.88	30.62			
TP			6.80	23.82	
			0.46		
	5.45				
	1.81	29.27			
TP			5.81	23.46	
			1.95		
	5.83				
	1.43	29.29			
BM			2.42	26.87	
			4.84		
RETURN LEVELS					
BM				26.87	
	2.56				
	4.70	29.43			
TP			5.97	23.46	
			1.29		
	6.00				
	1.26	29.46			
TP			5.66	23.80	
			1.60		
	6.62				
	0.64	30.42			

CONT'D ON PG. 8

COMMENTS



BM BRIDGE RD#1 IS A SRD 5X5" CONC RW MON AT THE N.W. COR OF US-1 (FEDERAL HIGHWAY) + SR-708 (BRIDGE RD) ELEV. IS ON TOP OF S.W. COR. OF MON. MON IS 2' ABOVE GRND LEVEL AT THE SE. COR. OF BANK PARKING LOT MON IS 120' S.E. OF A FLAG POLE AND 70' N.W. OF A POWER POLE W/ GUY WIRE



CONT'D FROM PG-7

STA	+	#1	-	ELEV	BM ELEV
TP		30.42	5.11 2.15	25.31	
	6.02 1.24	31.33			
TP			4.24 3.02	27.09	
	5.09 2.17	32.18			
TP			4.01 3.25	28.17	
	4.15 3.11	32.32			
TP			6.51 0.75	25.81	
	2.27 4.99	28.08			
TP			8.08 5.18	20.00	
	1.88 5.38	21.88			
TP			5.38 1.88	16.50	
	3.184 4.12	19.64			
TP			4.69 2.57	14.95	
	2.94 4.32	17.89			

CONT'D ON PG-9

COMMENTS



CONT'D FROM PG-8

STA	+	HI	-	ELEV	BM ELEV
TP		17.89	4.05 3.21	13.84	
	3.85 3.41	17.69			
TP			4.42 2.84	13.27	
	3.76 3.50	17.03			
TP			4.15 3.11	12.88	
	3.85 3.41	16.73			
TP			4.38 2.88	12.35	
	3.91 3.35	16.26			
TP			4.43 2.83	11.83	
	3.54 3.72	15.37			
BM			5.85 1.41	9.52	9.52

LEVELS CONT'D TO WEST

BM					26.87
	0.17 7.09	27.04			

CONT'D ON PG-10

COMMENTS

BM USCGS MON. U-22A 1965 GOOD CONDITION  
RECOVERED AS DESCRIBED ELEV 9.524

BM BRIDGE RD#1 SEE PG-7



CONT'D FROM Pg-9

STA	+	#1	-	ELEV	B.M. ELEV
TP		27.04	6.41 0.85	20.63	
	5.11 2.15	25.74			
TP			4.15 3.11	21.59	
	6.08 1.18	27.67			
TP			6.47 0.79	21.20	
	4.39 2.67	25.59			
TP			3.32 3.94	22.27	
	5.59 1.67	27.86			
TP			6.75 0.51	21.11	
	4.31 2.95	25.42			
TP			6.25 1.01	19.17	
	3.87 3.39	23.04			
TP			5.02 2.24	18.02	
	4.84 2.40	22.33			

CONT'D ON PG-

COMMENTS:



CONT'D FROM Pg. 10

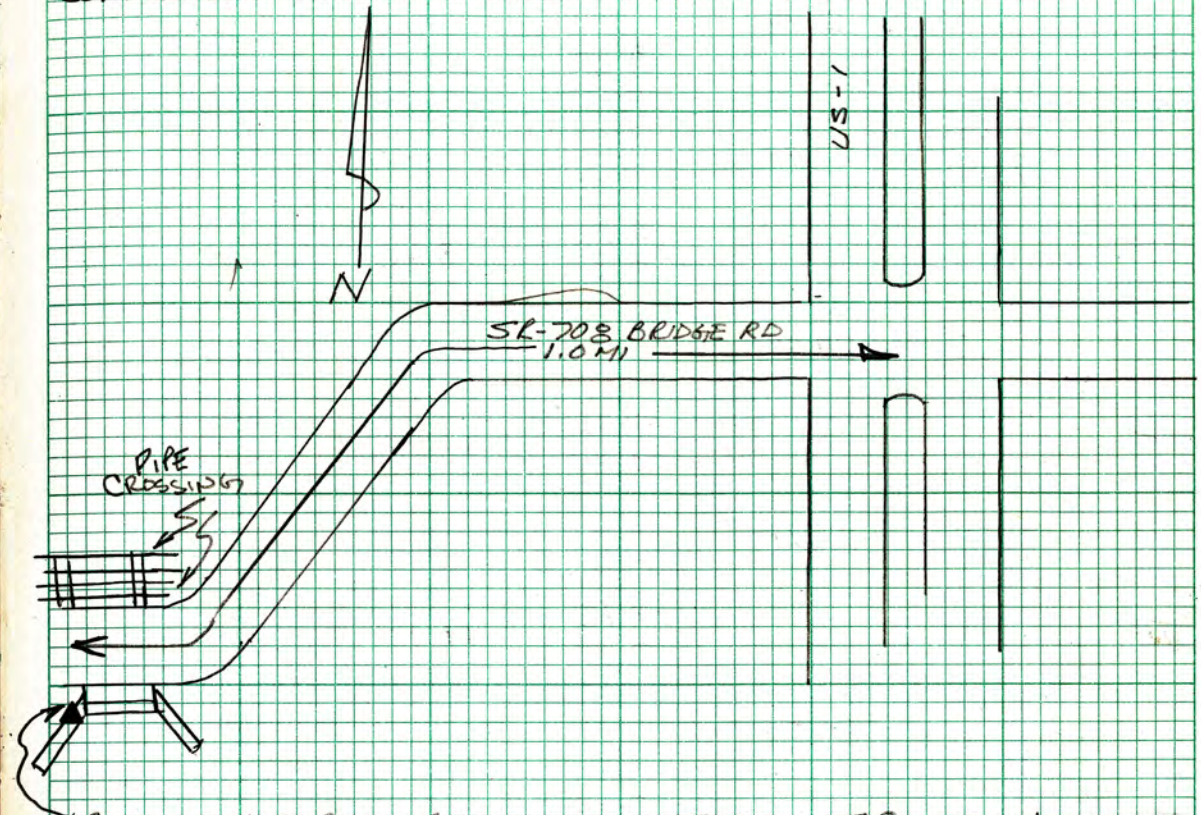
STA	+	HI	-	ELEV	BMELEV
TP		22.88	5.05 2.21	17.83	
	5.55 1.71	23.38			
TP			4.92 2.34	18.46	
	4.79 2.47	23.25			
TP			6.98 0.28	16.27	
	5.13 2.13	21.40			
TP			3.39 3.87	18.01	
	5.56 1.70	23.57			
BM			7.02 0.24	16.55	16.59 ADJ

RETURN LEVELS

BM				16.55	
	6.71 0.55	23.26			
TP			5.25 2.01	18.01	
	3.54 3.72	21.55			

CONT'D ON Pg. 12

COMMENTS



BM IS A S.P.D BRASS DISK SET IN TOP OF WEST WING WALL OF A BOX CULVERT ON SOUTH SIDE BRIDGE RD 1.0 MI WEST OF U.S.-1



CONT'D FROM Pg-11

STA	+	HI	-	ELEV	BMELEV
TP		21.55	4.37 2.89	17.18	
	5.68 1.58	22.86			
TP			4.22 3.04	18.64	
	5.59 1.67	24.23			
TP			3.33 3.93	20.90	
	5.31 1.95	26.21			
TP			5.12 2.14	21.09	
	5.17 2.09	26.26			
TP			6.24 1.02	20.02	
	5.78 1.48	25.80			
TP			3.70 3.56	22.10	
	6.08 1.18	28.18			
TP			5.90 1.36	22.28	
	3.50 3.76	25.78			

CONT'D ON Pg-13

COMMENTS



CONT'D FROM PG - 12

STA	+	#1	-	ELEV	BM ELEV
TP		25.78	4.76 2.50	21.02	
	6.37 0.89	27.39			
TP			6.98 0.28	20.41	
	5.26 2.00	25.67			
TP			4.72 2.54	20.95	
	6.46 0.80	27.41			
BM			0.52 6.74	26.89	26.87

LEVELS CONT'D WEST TO WELL

BM				16.54	
	7.12 0.14	26.66			
TP			5.85 1.41	17.81	
	4.02 3.24	21.83			
TP			5.09 2.17	16.74	
	5.24 2.02	21.98			

CONT'D ON PG - 14

COMMENTS

BM BRIDGE RD #1 SEE PG - 7

BM S RD BRASS DISK DISK SEE PG - 11



CONT'D FROM PG-13

STA	+	HI	-	ELEV	BMELEV
		21.98	5.56	16.42	
TP			1.70		
	4.95	21.37			
	2.31				
TP			4.80	16.57	
			2.46		
	5.30	21.87			
	1.96				
TP			5.49	16.44	
			1.83		
	5.26	21.70			
	2.00				
TP			4.82	16.88	
			2.44		
	4.80	21.68			
	2.46				
TP			5.23	16.45	
			2.03		
	5.46	21.91			
	1.90				
TP			5.41	16.50	
			1.85		
	5.32	21.82			
	1.94				
TP			5.06	16.76	
			2.00		
	5.42	22.18			
	1.84				

CONT'D ON PG-15

COMMENTS



CONT'D FROM PG-14

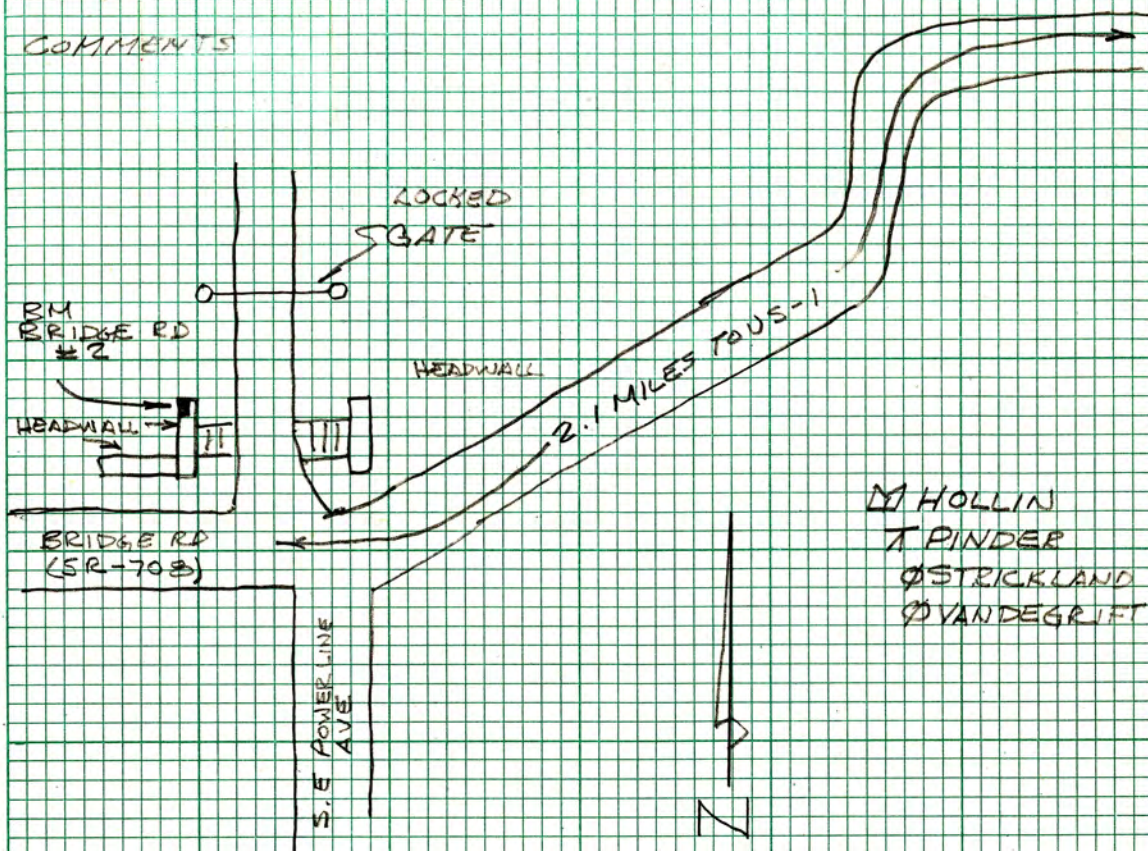
STA	+	H1	-	ELEV	BM ELEV
TP		22.18	5.16 2.10	17.02	
	5.26 2.00	22.28			
TP			5.10 2.16	17.18	
	5.67 1.59	22.85			
TP			5.22 2.04	17.63	
	4.88 2.38	22.51			
TP			4.60 2.66	17.91	
	5.26 2.00	23.17			
TP			4.87 2.39	18.30	
	3.36 3.90	21.66			
BM			5.55 1.71	16.11	

RETURN LEVELS

BM				16.11	
	5.51 1.75	21.62			

CONT'D ON PG-

COMMENTS



SEC 29 TWP 89 RGE 40

BM BRIDGE RD #2 IS A SQ CUT ON THE N.W. COR. OF THE N. END OF THE WEST HEADWALL. BM IS 2.1 MI WEST OF U.S.1 ON BRIDGE RD (SR-708) AND ON THE WEST SIDE OF A PAVED ACCESS RD TO N. AT CURVE



MARTIN Co WELL LEVELS FB# 9 03/01/89

CONT'D FROM Pg-15

STA	+	H I	-	ELEV	RMELEV
TP		21.62	4.18 3.08	17.44	
	5.47 1.79	22.91			
TP			5.15 2.13	17.78	
	4.81 2.45	22.59			
TP			4.99 2.27	17.60	
	4.83 2.43	22.43			
TP			5.19 2.07	17.24	
	4.89 2.37	22.13			
TP			5.17 2.09	16.96	
	4.93 2.33	21.89			
TP			5.01 2.25	16.88	
	5.07 2.19	21.95			
TP			5.00 2.26	16.95	
	4.98 2.28	21.93			

CONT'D ON Pg-17

MARTIN Co WELL LEVELS FB# 9 03/01/89

MS 16

COMMENTS



MARTIN CO WELLS LEVELS FR #3 03/01/89

CONT'D FROM Pg. -16

STA	+	HI	-	ELEV	BM ELEV
TP	5.24 2.02	21.93	5.23 2.03	16.70	
TP	5.12 2.14	21.94	5.17 2.09	16.77	
TP	4.90 2.36	21.89	5.18 2.08	16.71	
TP	4.93 2.33	21.61	4.93 2.28	16.63	
TP	5.43 1.83	21.56	5.00 2.26	16.56	
TP	4.61 2.65	21.99	5.21 2.05	16.78	
TP	5.02 2.24	21.39	5.50 1.76	15.89	
BM		20.91	4.37 2.89	16.54	16.54

TVE TO WELL ON PG -18

MARTIN CO WELLS LEVELS FR #3 03/01/89

MS 17

COMMENTS

BM S.R.D BRASS DISK SEE PG -11



TIE TO WELLS M-1259 + M 1260 CONT'D FROM Pg. 17

STA	+	HI	-	ELEV	BM ELEV
BM					16.11
		3.82			
		3.44		19.93	
WELL# M 1260				5.20	14.73
				2.06	
		5.36			
		1.90		20.09	
WELL# M 1259				5.22	14.87
				2.04	
		4.52			
		2.74		19.39	
BM				3.28	16.11
				3.98	16.11

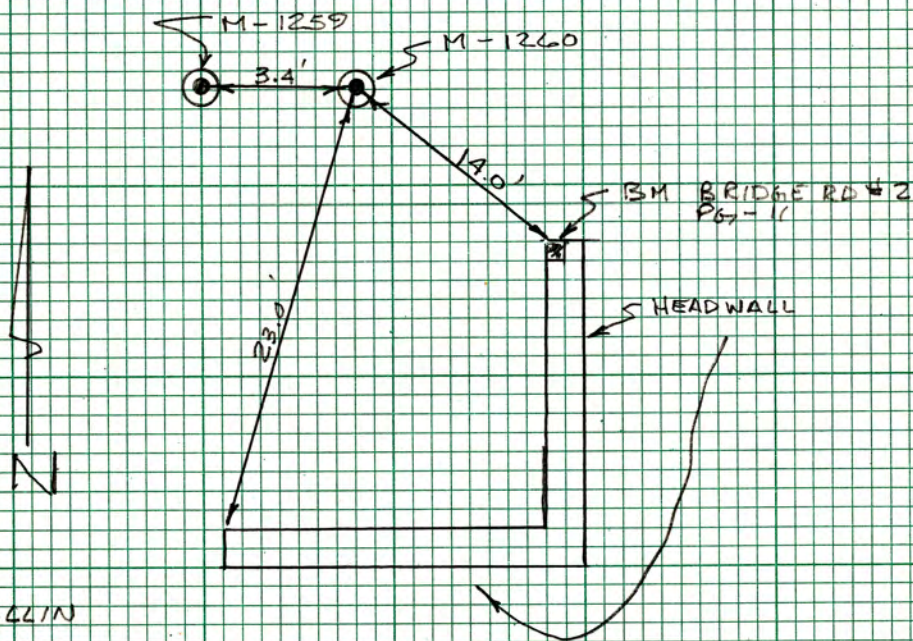
COMMENTS

BM BRIDGE RD # 2 SEE PG-15

TOP + N. SIDE OF E. MOST 2" PVC WELL IN 12" ROUND GREEN IRR BOX. ELEV IS A X-MARK ON TOP OF 2" PVC PIPE WHICH IS 0.4' BELOW GRND LEVEL. WELL IS 2.1 MI WEST OF US-1 ON BRIDGE RD ON N.W. SIDE OF PAVED RD 14.0' N.W. OF THE N. END OF A N. + S END WALL W/ BM BRIDGE # 2 + 23.0' N. OF A E/W END WALL

M-1259 TOP + N- SIDE OF W. MOST 2" PVC WELL IN 12" ROUND GREEN IRR BOX ELEV IS A X-MARK ON TOP OF 2" PVC PIPE WHICH IS 0.5' BELOW GRND LEVEL. WELL IS 3.4' W. OF WELL # M-1260

SEE SKETCH ON PG. 15 FOR LOCATION



HOLLIN  
PINDER  
STRICKLAND  
VANDEGRIFT

SEG-29 TWP 39 R6E42





# SOUTH FLORIDA WATER MANAGEMENT DISTRICT

Rev. 8/07

DESIGNATION: BRIDGE RD. 2	PROJECT M1259 & M1260 Wells
ESTABLISHED BY: South Florida Water Management District	SURVEYOR: Arthur Hollin
RECOVERED BY	DATE: <u>March 1, 1989</u>

### GEOGRAPHIC POSITION

SECTION 29	TOWNSHIP 39	RANGE 42
COUNTY: Martin	NAME OF QUADRANGLE: GOMEZ GEOGRAPHIC INDEX OF QUAD	
HORIZONTAL DATUM: 1927    1983    Other _____ (circle one)    ZONE E or W		
VERTICAL DATUM: MSL    1929    1988    Other _____ (circle one)		
CONTROL ACCURACY: HORIZONTAL 1 2 3 _____ (circle one)    VERTICAL 1 2 3		
STATE PLANE COORDINATES	X	Y
		NAVD 88 EL. 15.984 NGVD 29 EL. 14.491
LATITUDE: 27° 02' 37.8" N		LONGITUDE: 80° 09' 46.9" W

### RECOVERY DESCRIPTION

**Stamping: None**

**To Reach:** From the intersection of U.S. 1 SR-708 (Bridge Road); Go West on SR-708 for 2.0 miles to a bend in the road and SE Powerline Road to the left (South) and a paved access road to the right (North); turn right and cross over the culvert bridge and the station location. The station is a square cut in the northwest corner of the north end of the west headway, 14.0' southeast of well M1260.

NGS Source Benchmark: U224 (AF3053)

**Notable Land marks:**

**FIELD BOOK** Martin County Wells 9    **PAGE 15**

### SKETCH



# The NGS Data Sheet

See file [dsdata.txt](#) for more information about the datasheet.

```

PROGRAM = datasheet95, VERSION = 8.8
1      National Geodetic Survey,   Retrieval Date = OCTOBER 30, 2015
AF3053 *****
AF3053 DESIGNATION - U 224
AF3053 PID - AF3053
AF3053 STATE/COUNTY- FL/MARTIN
AF3053 COUNTRY - US
AF3053 USGS QUAD - HOBE SOUND (1983)
AF3053
AF3053 *CURRENT SURVEY CONTROL
AF3053
AF3053* NAD 83(1986) POSITION- 27 03 14.8 (N) 080 07 25.1 (W) HD HELD2
AF3053* NAVD 88 ORTHO HEIGHT - 2.415 (meters) 7.92 (feet) ADJUSTED
AF3053
AF3053 GEOID HEIGHT - -27.651 (meters) GEOID12B
AF3053 DYNAMIC HEIGHT - 2.411 (meters) 7.91 (feet) COMP
AF3053 MODELED GRAVITY - 979,097.3 (mgal) NAVD 88
AF3053
AF3053 VERT ORDER - FIRST CLASS I
AF3053
AF3053.The horizontal coordinates were established by autonomous hand held GPS
AF3053.observations and have an estimated accuracy of +/- 10 meters.
AF3053.
AF3053.The orthometric height was determined by differential leveling and
AF3053.adjusted by the NATIONAL GEODETIC SURVEY
AF3053.in May 1994.
AF3053
AF3053.Significant digits in the geoid height do not necessarily reflect accuracy.
AF3053.GEOID12B height accuracy estimate available here.
AF3053
AF3053.The dynamic height is computed by dividing the NAVD 88
AF3053.geopotential number by the normal gravity value computed on the
AF3053.Geodetic Reference System of 1980 (GRS 80) ellipsoid at 45
AF3053.degrees latitude (g = 980.6199 gals.).
AF3053
AF3053.The modeled gravity was interpolated from observed gravity values.
AF3053
AF3053;
AF3053;SPC FL E - North East Units Estimated Accuracy
AF3053; 301,702. 286,938. MT (+/- 10 meters HH2 GPS)
AF3053
AF3053 SUPERSEDED SURVEY CONTROL
AF3053
AF3053 NAVD 88 (06/15/91) 2.442 (m) 8.01 (f) SUPERSEDED 1 1
AF3053 NGVD 29 (??/??/92) 2.903 (m) 9.52 (f) SUPERSEDED 1 1
AF3053 NGVD 29 (09/01/92) 2.870 (m) 9.42 (f) ADJUSTED 1 1
AF3053
AF3053.Superseded values are not recommended for survey control.
AF3053
AF3053.NGS no longer adjusts projects to the NAD 27 or NGVD 29 datums.
AF3053.See file dsdata.txt to determine how the superseded data were derived.
AF3053
AF3053_U.S. NATIONAL GRID SPATIAL ADDRESS: 17RNK8690892730 (NAD 83)
AF3053
AF3053_MARKER: DB = BENCH MARK DISK
AF3053_SETTING: 7 = SET IN TOP OF CONCRETE MONUMENT
AF3053_STAMPING: U 224 1965
AF3053_MARK LOGO: CGS

```



AF3053\_STABILITY: C = MAY HOLD, BUT OF TYPE COMMONLY SUBJECT TO  
 AF3053+STABILITY: SURFACE MOTION  
 AF3053\_SATELLITE: THE SITE LOCATION WAS REPORTED AS SUITABLE FOR  
 AF3053+SATELLITE: SATELLITE OBSERVATIONS - November 10, 2003

AF3053

AF3053	HISTORY	- Date	Condition	Report By
AF3053	HISTORY	- 1965	MONUMENTED	CGS
AF3053	HISTORY	- 1970	GOOD	NGS
AF3053	HISTORY	- 1973	GOOD	NGS
AF3053	HISTORY	- 1988	GOOD	USPSQD
AF3053	HISTORY	- 1989	GOOD	USPSQD
AF3053	HISTORY	- 1990	GOOD	USPSQD
AF3053	HISTORY	- 19910124	GOOD	NGS
AF3053	HISTORY	- 20031110	GOOD	USPSQD

AF3053

AF3053 STATION DESCRIPTION

AF3053

AF3053'DESCRIBED BY NATIONAL GEODETIC SURVEY 1970

AF3053'AT HOBE SOUND.

AF3053'AT HOBE SOUND, ABOUT 0.65 MILE SOUTHEAST ALONG THE FLORIDA EAST

AF3053'COAST RAILWAY FROM THE CROSSING OF STATE HIGHWAY 707, ABOUT

AF3053'0.35 MILE SOUTHEAST ALONG STATE HIGHWAY A 1 A FROM THE POST

AF3053'OFFICE, 7 1/2 RAILS NORTHWEST OF THE CENTER OF THE CROSSING OF

AF3053'A PAVED ROAD, 85 FEET NORTHEAST AND ACROSS THE TRACK FROM THE

AF3053'NORTH CORNER OF A ONE-STORY CONCRETE BLOCK BUILDING MARKED

AF3053'VILLAGE PLAZA, 35 FEET NORTHEAST OF THE CENTER LINE OF STATE

AF3053'HIGHWAY A 1 A, 30 FEET SOUTHWEST OF THE SOUTHWEST RAIL, 1.6 FEET

AF3053'NORTHWEST OF A METAL WITNESS POST, 1 FOOT BELOW THE LEVEL OF

AF3053'THE TRACK, AND SET IN THE TOP OF A CONCRETE POST WHICH PROJECTS

AF3053'3 INCHES ABOVE THE LEVEL OF THE GROUND.

AF3053

AF3053 STATION RECOVERY (1973)

AF3053

AF3053'RECOVERY NOTE BY NATIONAL GEODETIC SURVEY 1973

AF3053'RECOVERED IN GOOD CONDITION.

AF3053

AF3053 STATION RECOVERY (1988)

AF3053

AF3053'RECOVERY NOTE BY US POWER SQUADRON 1988 (RBS)

AF3053'RECOVERED IN GOOD CONDITION.

AF3053

AF3053 STATION RECOVERY (1989)

AF3053

AF3053'RECOVERY NOTE BY US POWER SQUADRON 1989 (DHF)

AF3053'RECOVERED IN GOOD CONDITION.

AF3053

AF3053 STATION RECOVERY (1990)

AF3053

AF3053'RECOVERY NOTE BY US POWER SQUADRON 1990 (DHF)

AF3053'RECOVERED IN GOOD CONDITION.

AF3053

AF3053 STATION RECOVERY (1991)

AF3053

AF3053'RECOVERY NOTE BY NATIONAL GEODETIC SURVEY 1991

AF3053'1.1 KM (0.7 MI) SOUTHEASTERLY ALONG STATE HIGHWAY A1A (DIXIE HIGHWAY)

AF3053'FROM THE JUNCTION OF COUNTY ROAD 708 (SOUTHEAST BRIDGE ROAD) IN HOBE

AF3053'SOUND, 25.9 M (85.0 FT) NORTHEAST OF THE NORTH CORNER OF THE CLOUD

AF3053'900 BUILDING, 19.7 M (64.6 FT) EAST OF A 24-INCH PINE TREE (1991),

AF3053'13.0 M (42.7 FT) SOUTHWEST OF THE NEAR RAIL OF THE FLORIDA EAST COAST

AF3053'RAILROAD, 10.7 M (35.1 FT) NORTHEAST OF AND LEVEL WITH THE HIGHWAY

AF3053'CENTERLINE, 6.2 M (20.3 FT) NORTHEAST OF A UTILITY POLE, 0.3 M (1.0

AF3053'FT) SOUTHWEST OF A WITNESS POST, AND THE MONUMENT IS FLUSH WITH THE

AF3053'GROUND SURFACE.

AF3053

AF3053 STATION RECOVERY (2003)

AF3053



AF3053'RECOVERY NOTE BY US POWER SQUADRON 2003 (AEP)  
AF3053'WITNESS POST MISSING. PAVED ROAD NO LONGER CROSSES TRACKS. CONCRETE  
AF3053'BLOCK BUILDING IS NUMBER 12230. MARK IS 21 FEET NORTHEAST OF WOODEN  
AF3053'POLE SUPPORTING TELEPHONE LINES.  
AF3053'

\*\*\* retrieval complete.  
Elapsed Time = 00:00:02



PROJECT:  
LINE FROM U 224 TO BRIDGE 2

FIELD BOOK MCW 9 p 5-  
PARTY CHIEF HOLLIN

ORDER 3<sup>RD</sup>  
COUNTY MARTIN

ADJ. BY HJE  
DATE 10/30/15

MCW 10 - p 29 -

SECTION	DISTANCE	F B	SUM ROD READINGS		DIFF. ELEV.	MEAN DIFF.	ELEVATIONS			REMARKS
			BACK +	FWD. -			UNADJ.	CORR.	ADJ.	
									9.416	U 224
		F	98.41	81.06	+ 7.35				7.923	(88) → (2.870m) 29 (2.415m) 88
		B	59.624	76.93	- 17.306					(-1.492779166')
BRIDGE RD #1						+ 17.328			26.744	
		F	55.41	65.73	- 10.32					
		B	65.45	55.11	+ 10.34					
SRD BR. PSK						- 10.33			16.414	
		F	77.32	77.75	- 0.43					
		B	75.74	75.31	+ 0.43					
BRIDGE RD #2						- 0.43			15.984	15.9839916666
									14.491	(88) 14.4912125
<u>MCW 10 P. 29</u>										
		F	69.29	70.17	- 0.88					
		B	71.57	70.65	+ 0.92					
JDPWET 9						- 0.90			15.084	15.0839916666
									13.591	13.59121250666
		F	57.66	58.81	- 1.15					
		B	59.30	58.16	+ 1.14					
JDPWET 10						- 1.145			13.939	13.9389916666
									12.446	(88) 12.44621250666