



RMBAKER LLC

WELL L63N
UWI L63N

Geology and Geophysics

PROFESSIONAL LICENSES
Geologist PG2186
Licensed Geology Business

8600 Oldbridge Lane
Orlando, FL 32819
mobile ph 407-733-8958

rob@rmbaker.com
www.rmbaker.com

HEADER NOTES:

COMP SFWMD
LOC L63N CONTINUOUS CORE
FLD L63N CONTINUOUS CORE
CNTY OKEECHOBEE
STAT FL
PROV FL
CTRY USA

LATI X
LONG Y
GDAT WGS84 HDAT
SEC ELEV
TWP V DAT
RGE
ALL SERVICES:
CALIPER
NATURAL GAMMA
ELECTRIC
DUAL INDUCTION
SONIC
WATER QUALITY
FLOWMETER

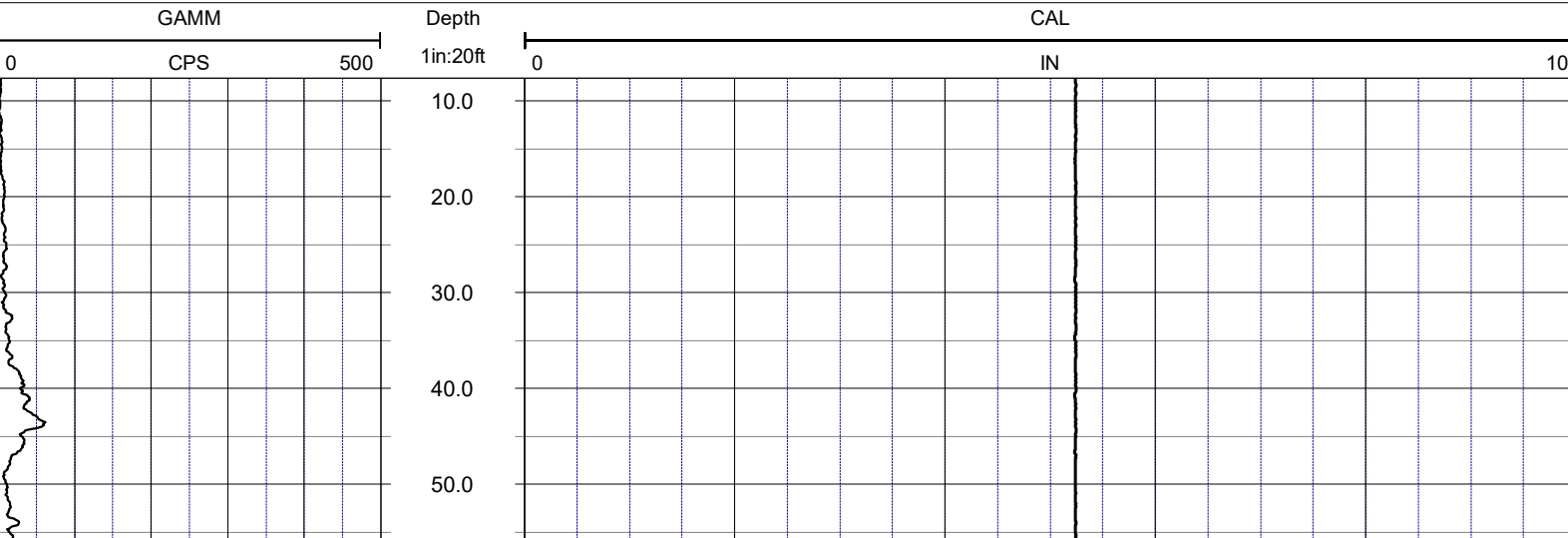
PERMANENT DATUM:

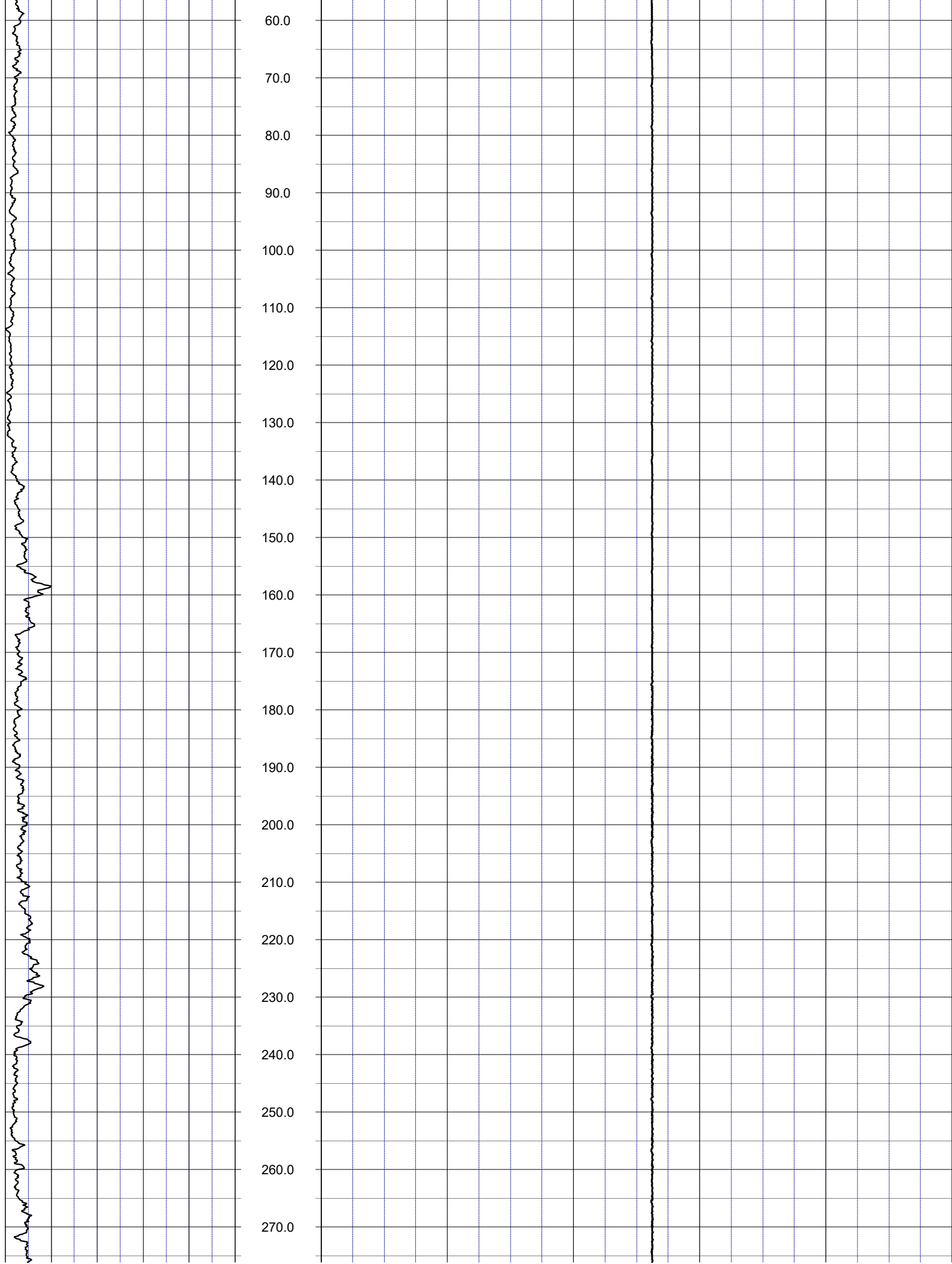
LOG MEASURED FROM: GROUND SURFACE
DRILLING MEASURED FROM: FLOW CONTROL FLANGE-29 INCHES A.G.

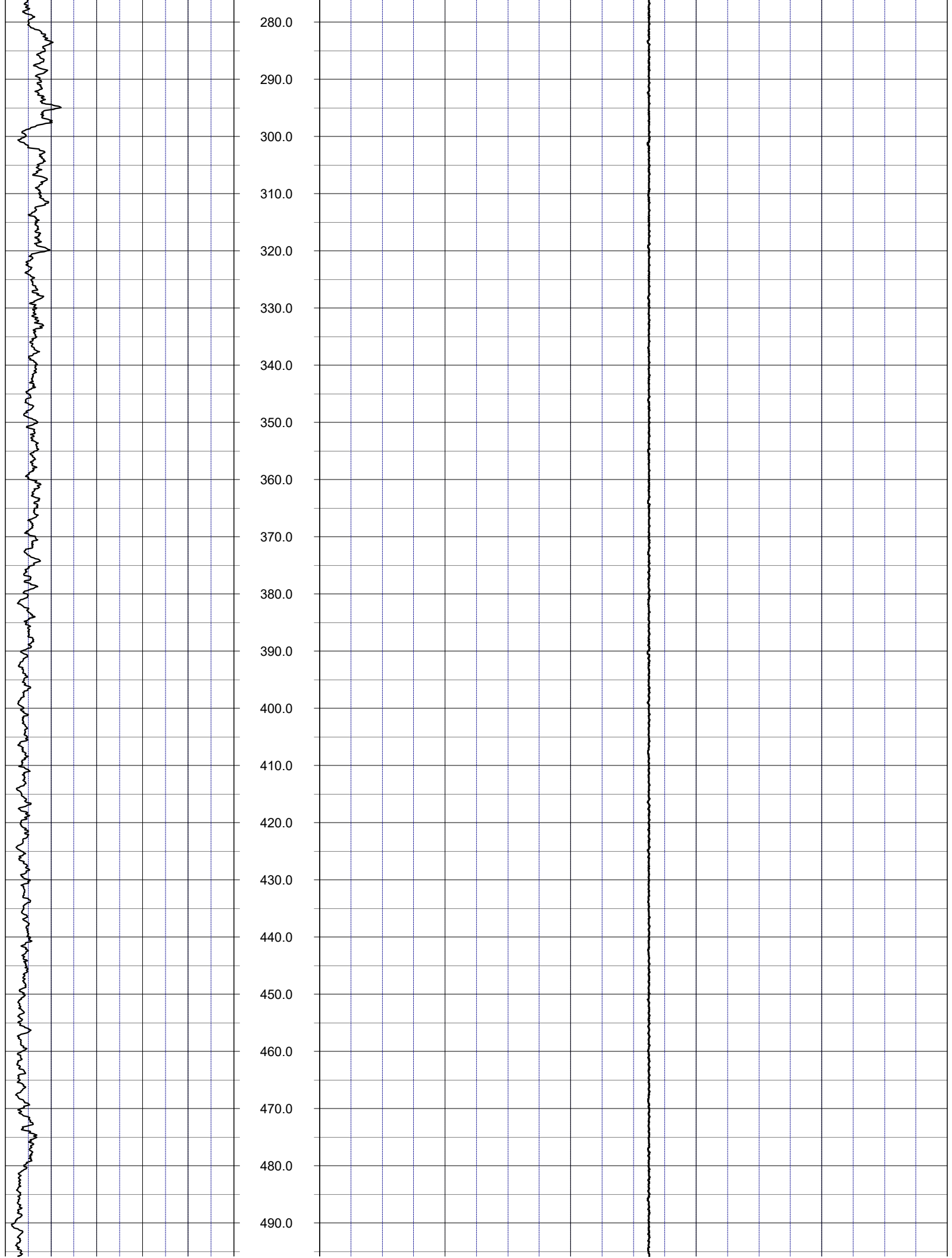
DATE	26 Mar 21	TYPE FLUID IN HOLE	WATER			
RUN No	2	LOGGING SPEED (FT/MIN)	40			
TYPE LOG	CALIPER	TROLLING DIRECTION	UP			
		PUMPING RATE (GPM)	N/A			
DEPTH-DRILLER	1360					
DEPTH-LOGGER	1357.05					
DRILLER	HUSS DRILLING					
RECORDED BY	RMB					
SRVC	RMBAKER LLC	API	N/A			
WITNESSED BY	STANTEC	LIC	N/A			
BOREHOLE RECORD						
RUN NO.	BIT FROM	TO	CASING RECORD			
	SIZE	MAT.	FROM	TO		
1	5.875	165	6	STEEL	0	165
2	4.875	701	5	STEEL	0	701

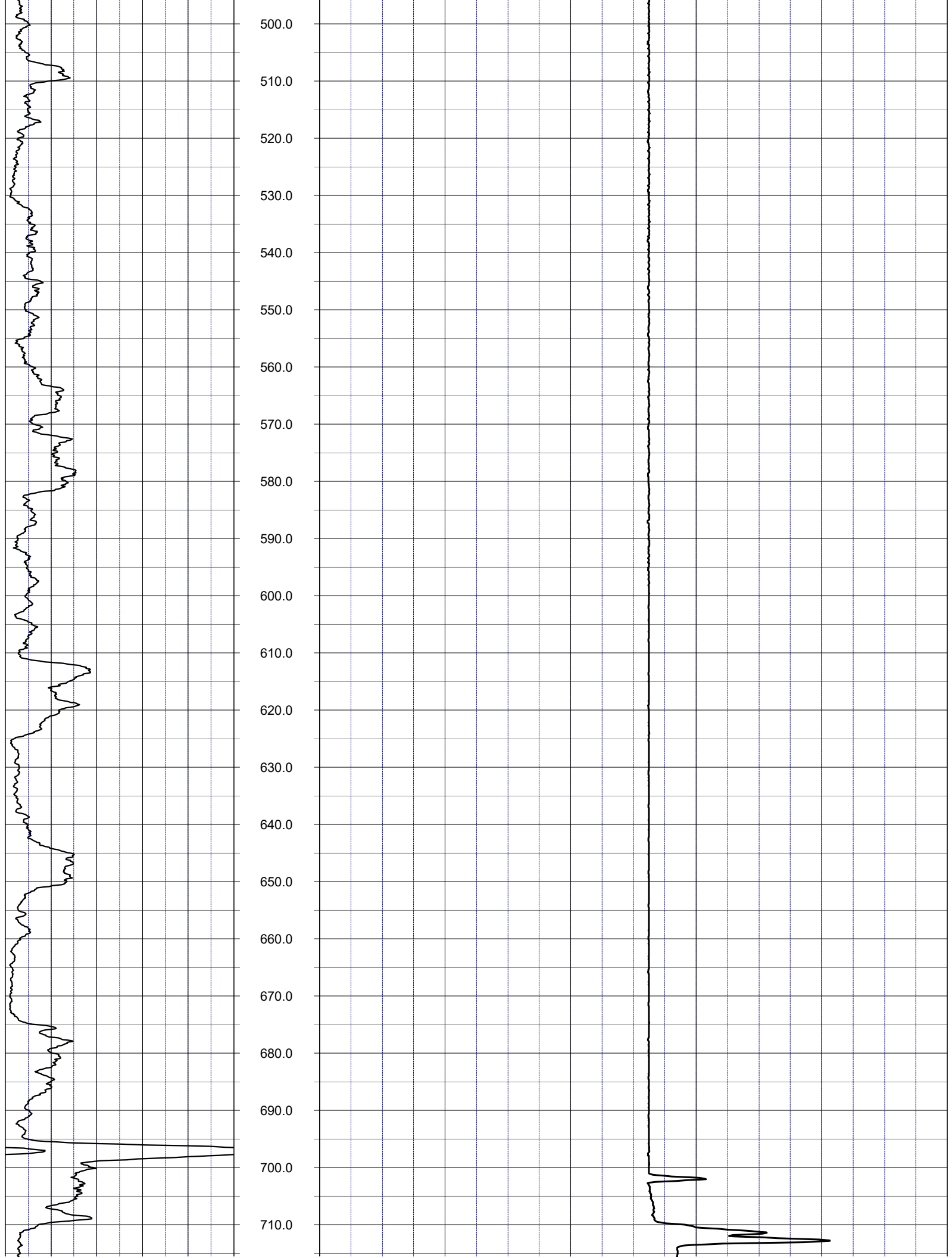
LOG CODES

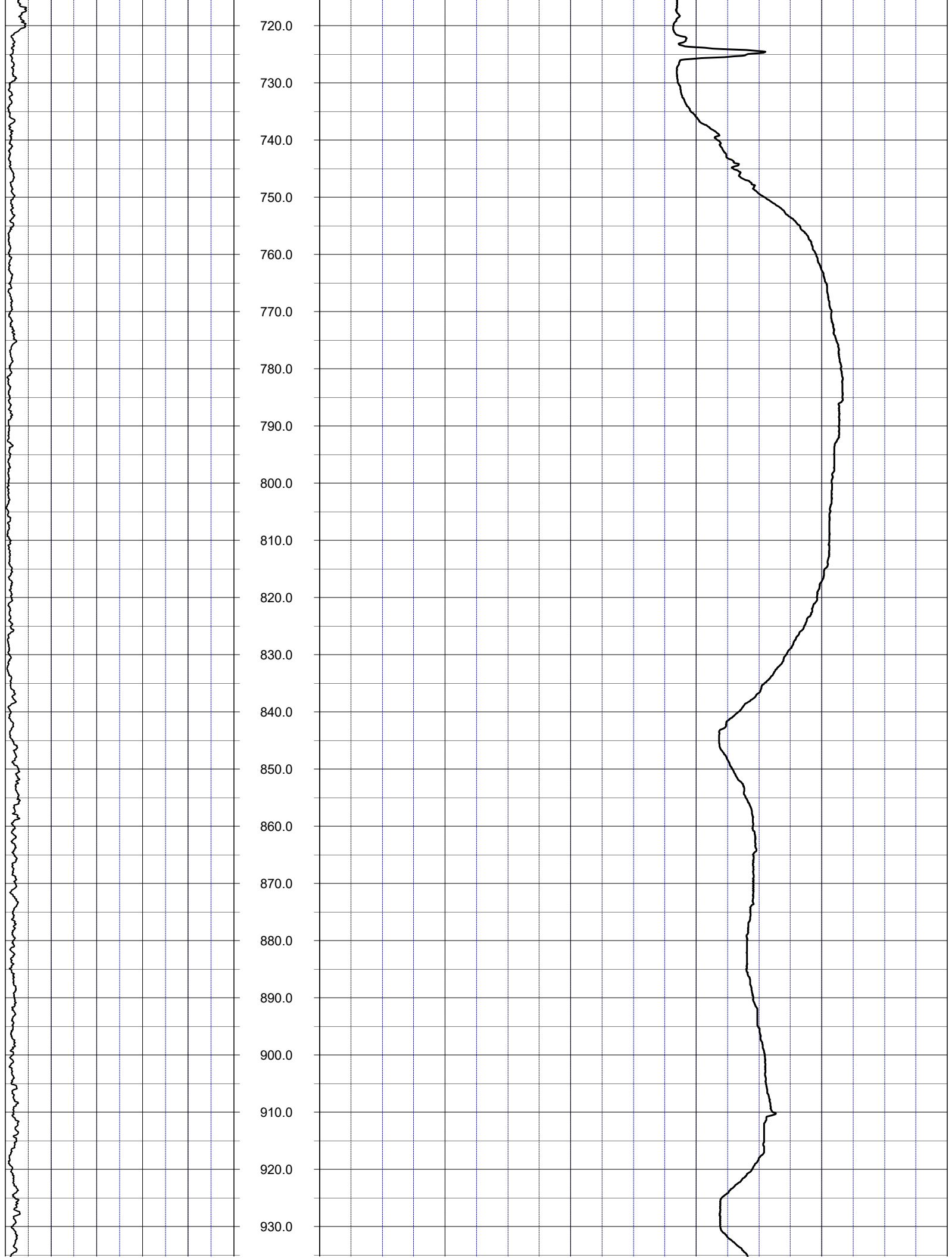
3-arm caliper	CAL	long normal resistivity	RLN	deep induction conductivity	IDC
natural gamma (CPS)	GAMM	8 inch resistivity	R8	shallow induction conductivity	ISC
spontaneous potential	ESP	32 inch resistivity	R32	sonic interval velocity	DT
single point resistance	RES	deep induction resistivity	ILD	sonic porosity (RHG method)	SPHI
short normal resistivity	RSN	shallow induction resistivity	ILM	repeat designation	R



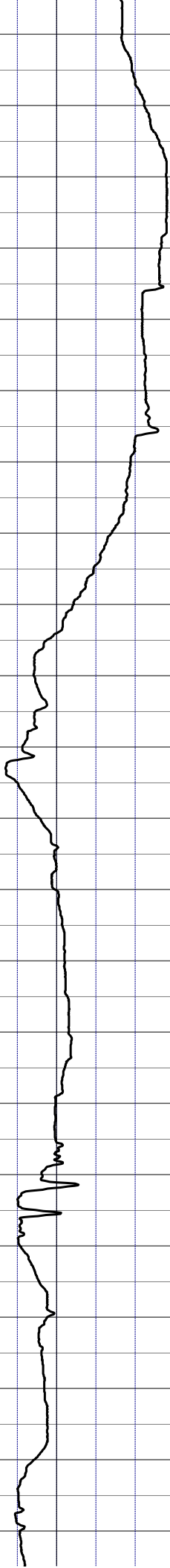
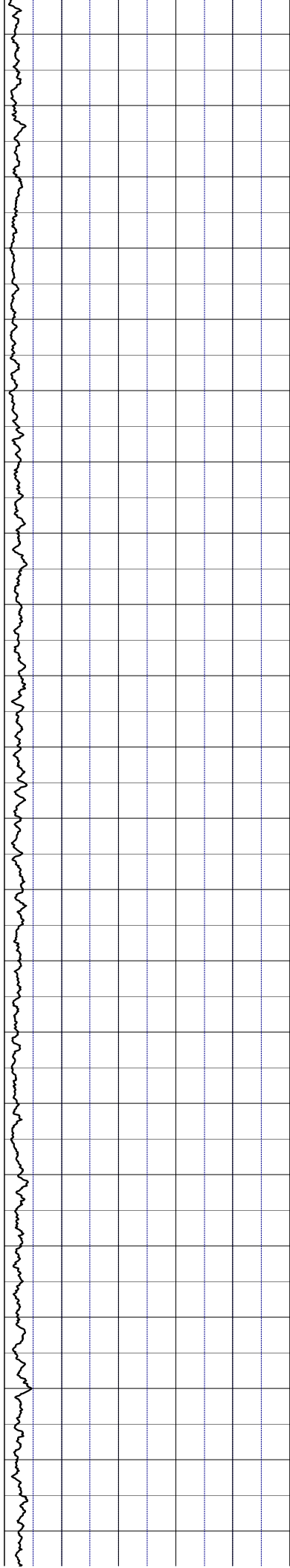


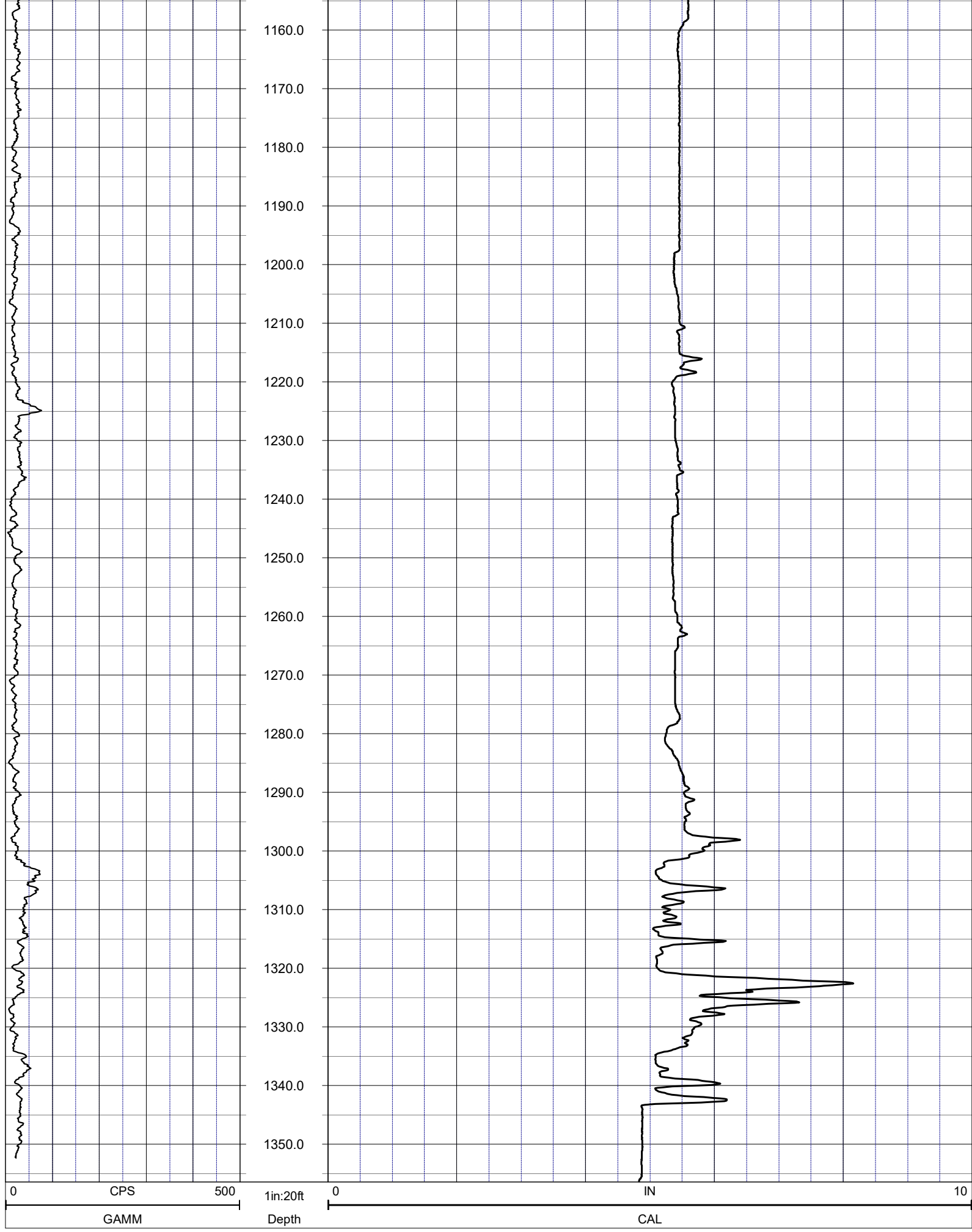






940.0
950.0
960.0
970.0
980.0
990.0
1000.0
1010.0
1020.0
1030.0
1040.0
1050.0
1060.0
1070.0
1080.0
1090.0
1100.0
1110.0
1120.0
1130.0
1140.0
1150.0





NOTES:

While due care has been exercised in the performance of these measurements and observations, in accordance with methodologies utilized by the general practitioner, RMLBAKER LLC can make no representations, warranties, or guarantees with respect to latent or concealed conditions that may exist, which may be beyond the detection capabilities of the methodologies used, or that may extend beyond the areas and depths surveyed.

The geophysical well logs show subsurface conditions as they existed at the dates and locations shown, and it is not warranted that they are representative of subsurface conditions at other locations and times. If, at any time, different subsurface conditions from those observed are determined to be present, we must be advised and allowed to review and revise our observations if necessary.

Florida Geology Business Licenced by PG2186

END OF LOG
