


PROJECT SITE: **MARTIN COUNTY UTILITY, JENSEN BEACH, FLORIDAN AQUIFER WELL RO-2**

FIGURE TITLE: **SITE MAP**

JLA Geosciences, Inc.

| | | |
|--------------------|---------------|--------------|
| DATE: 12-30-08 | DRAWN BY: JWF | FIGURE NO: 1 |
| PROJECT NO: 07-020 | | |
| SCALE: AS SHOWN | | |



**X-Y CALIPER
GAMMA RAY
LOG**

Company MARTIN COUNTY UTILITIES
Well RO #2
Field NORTH WATER TREATMENT PLANT
County MARTIN
State FLORIDA
Location: COUNTY MARTIN State FLORIDA
APR #:
Permanent diam. PAD
Log Measured from PAD
Logging Measured from PAD
Date Number 22-OCT-2008
Depth Unit 1700'
Depth Loggers Interval 1700'
Open Hole Size 12"
Bit Size 11"

Company MARTIN COUNTY UTILITIES
Well RO #2
Field NORTH WATER TREATMENT PLANT
County MARTIN
State FLORIDA
Location: COUNTY MARTIN State FLORIDA
APR #:
Permanent diam. PAD
Log Measured from PAD
Logging Measured from PAD
Date Number 22-OCT-2008
Depth Unit 1700'
Depth Loggers Interval 1700'
Open Hole Size 12"
Bit Size 11"

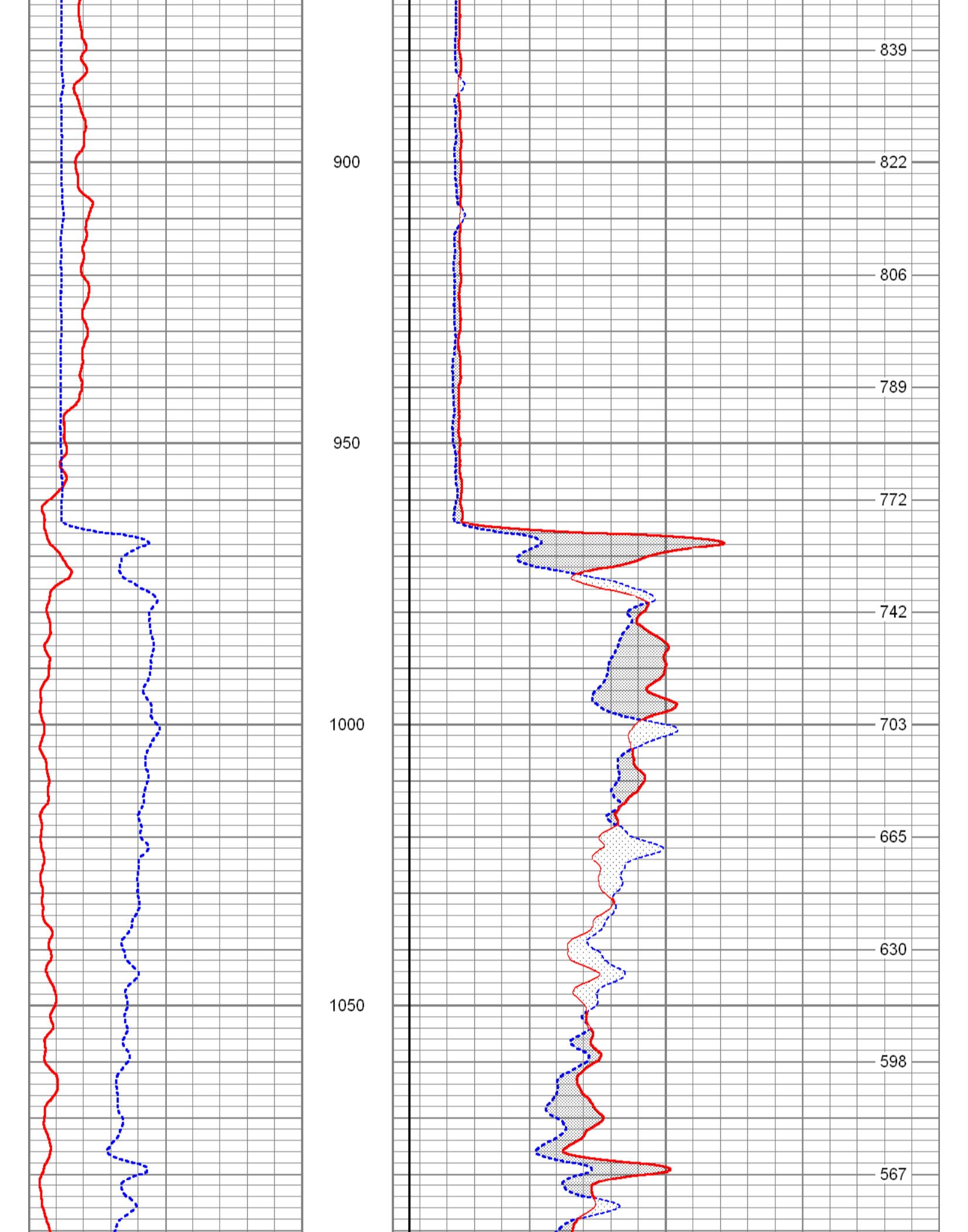
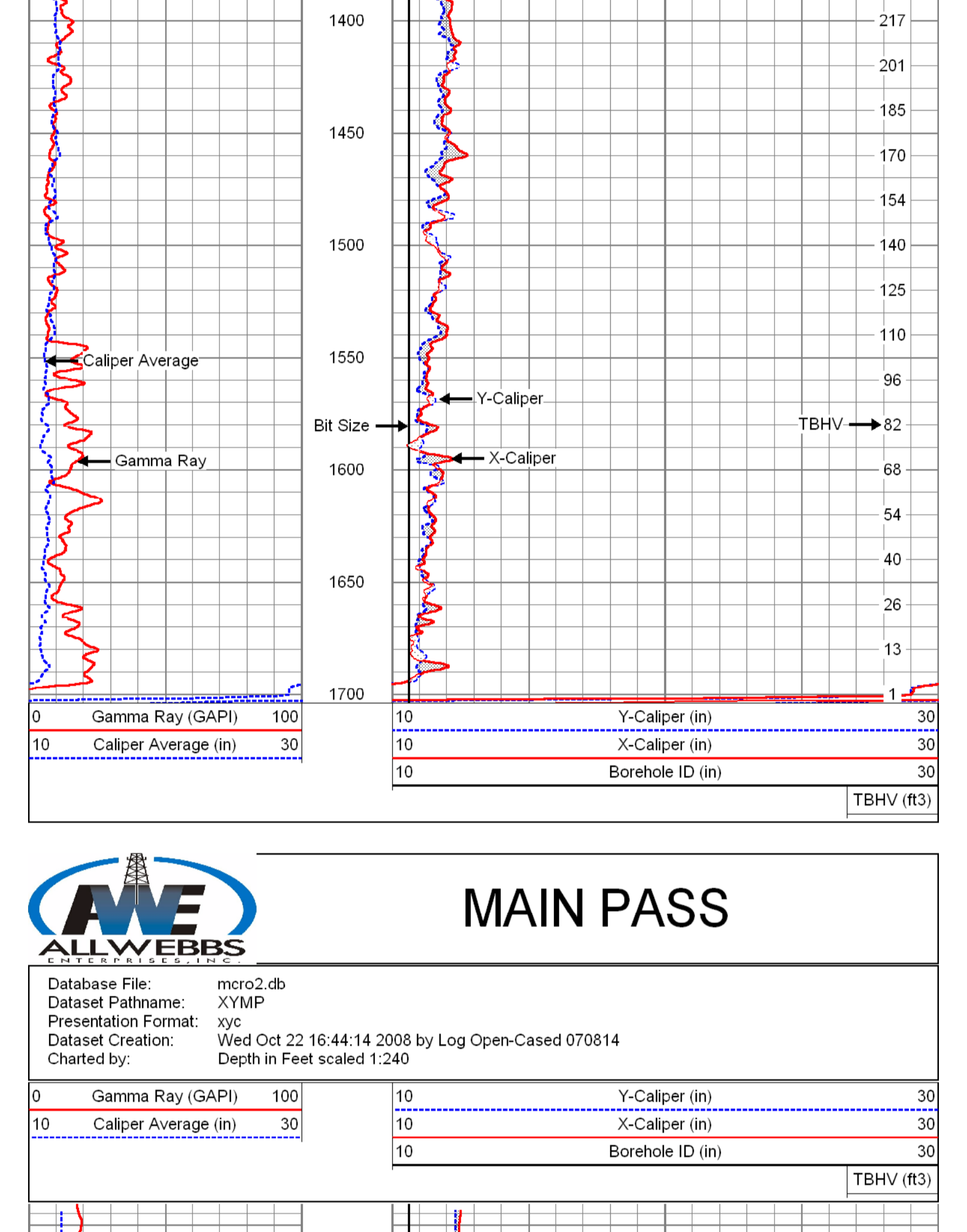
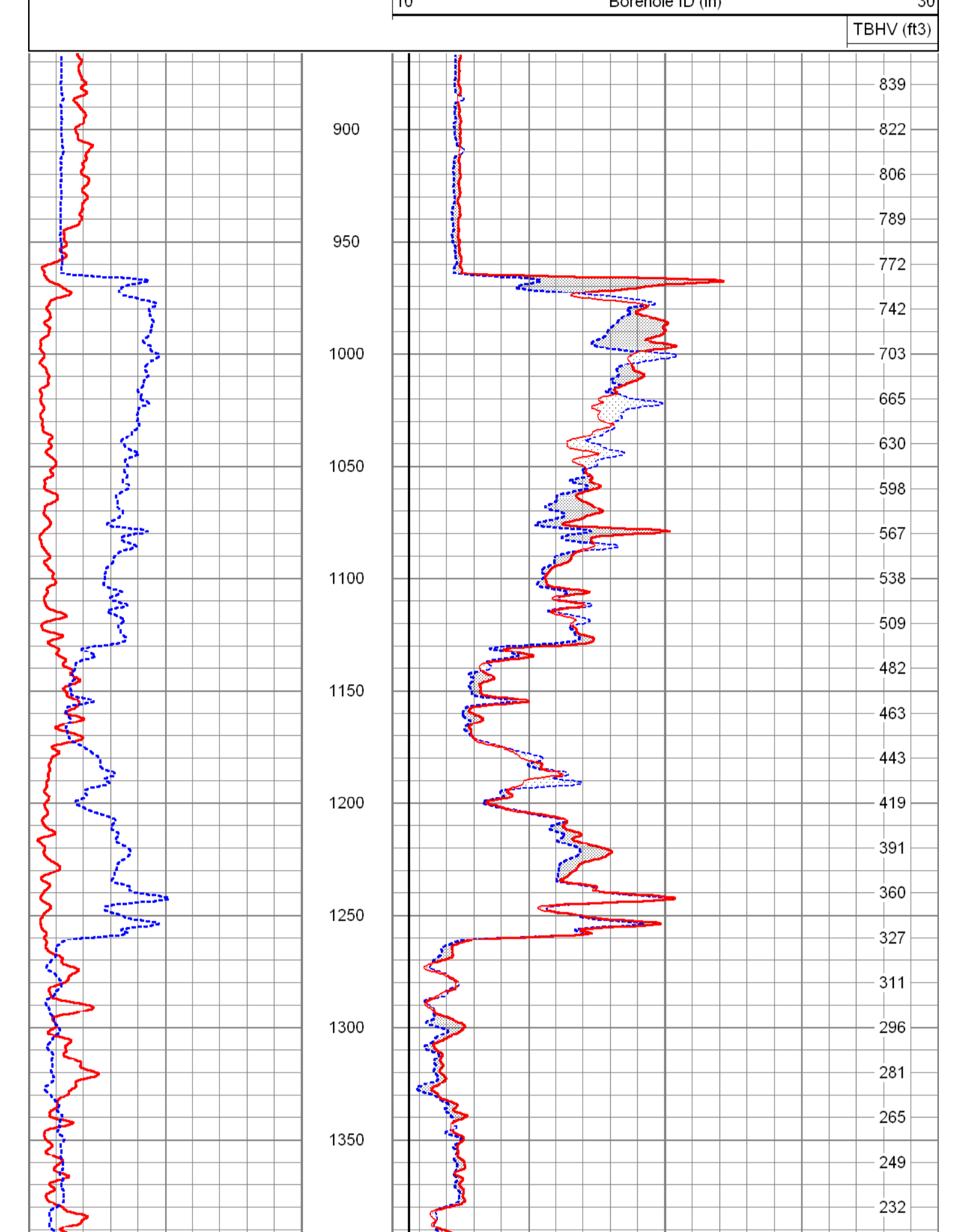
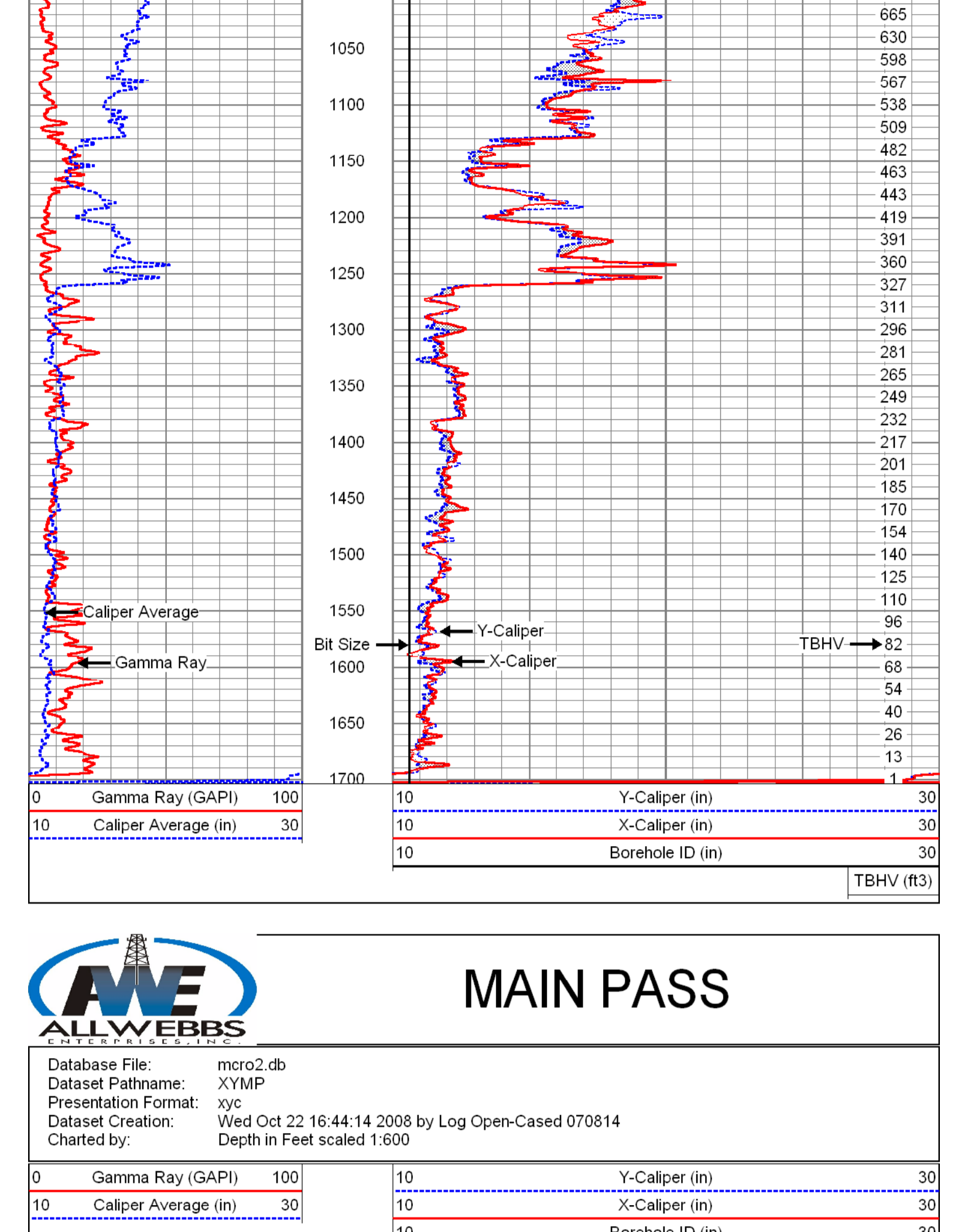
| | |
|-------------------------|-------------|
| Type of Fluid | WATER |
| True Recorded Temp. | WATER |
| Estimated Cement Top | DEEG |
| Estimated Cement Bottom | NA |
| Equipment Number | VA-03 |
| Recorded By | JUPITER |
| Reviewed By | JUPITER |
| Unreleased By | R. SMITH |
| Run Number | 1 |
| Begin/End Record | 10825 12807 |
| Run Length | 1982 |
| Run Date | 10/22/08 |
| Run Time | 11:00 |
| Run Location | RO #2 |
| Run Well | WATER |
| Run Depth | 1700' |
| Run Interval | 1700' |
| Run Size | 12" |
| Run Bit Size | 11" |
| Run Loggers | WATER |
| Run Loggers Interval | 1700' |
| Run Open Hole Size | 12" |
| Run Bit Size | 11" |
| Run Loggers | WATER |
| Run Loggers Interval | 1700' |
| Run Open Hole Size | 12" |
| Run Bit Size | 11" |

<<< Fold Here >>>

All interpretations are opinions based on inferences from electrical or other measurements and we cannot and do not guarantee the accuracy or correctness of any interpretation, and we shall not, except in the case of gross or willful negligence on our part, be liable or responsible for any loss, costs, damages, or expenses incurred or sustained by anyone resulting from any interpretation made by any of our officers, agents or employees. These interpretations are also subject to our general terms and conditions set out in our current Price Schedule.

Comments

FCT
DILL3/SP
FLOWMETER



Calibration Report

Database File: micro2.db
Dataset Pathname: XYMP
Dataset Creation: Wed Oct 22 16:44:14 2008 by Log Open-Cased 070814

XY Caliper Calibration Report

| | | | |
|----------------------|--------------------------|-------------|-------------|
| Serial Number/Model: | SDSDMO-XY | | |
| Performed: | Sat Oct 11 15:22:15 2008 | | |
| Ring | X Caliper | Y Caliper | |
| 1: | 7.75 in | 368.478 cps | 348.913 cps |
| 2: | 11.75 in | 413.696 cps | 401.522 cps |
| 3: | 42 in | 907.283 cps | 912.391 cps |
| 4: | in | cps | cps |
| 5: | in | cps | cps |
| 6: | in | cps | cps |

Gamma Ray Calibration Report

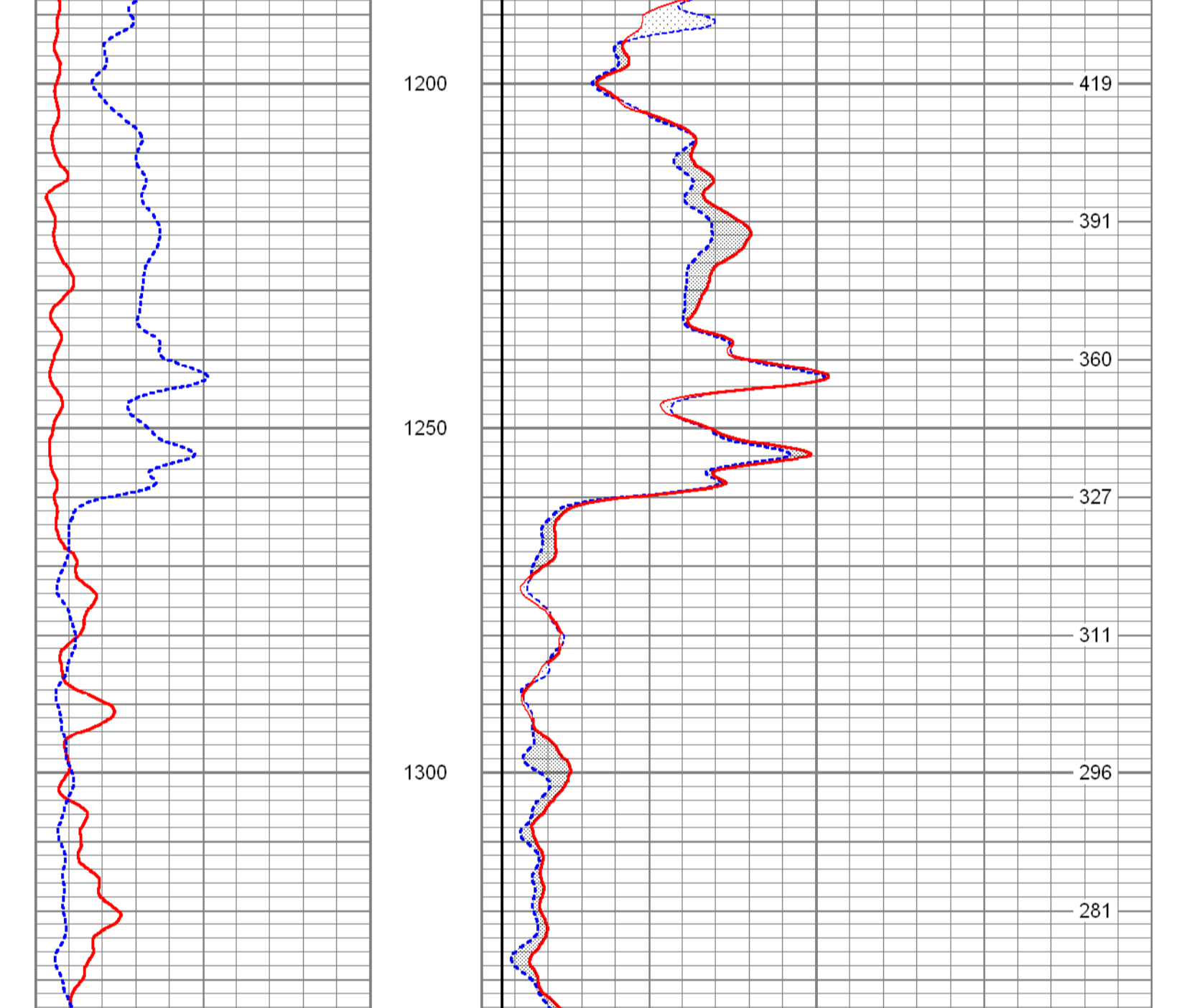
Serial Number: SDS
Tool Model: SDSGR
Performed: Sat Aug 30 08:06:45 2008

Calibrator Value: 120.0 GAPI

Background Reading: 85.9 cps

Calibrator Reading: 869.9 cps

Sensitivity: 0.1531 GAPI/cps



Dataset: micro2.db; field/well/run/XYMP
Total Length: 10.67 ft
Total Weight: 155.00 lb
O.D.: 3.50 in



FLOWMETER LOG

| | | | | | |
|------------------------|-----------------------------|-------------------|-----------------------------|----------------|-------------------------|
| Company | MARTIN COUNTY UTILITIES | Well | RO #2 | Company | MARTIN COUNTY UTILITIES |
| Field | NORTH WATER TREATMENT PLANT | Location | | Well | RO #2 |
| County | MARTIN | Field | NORTH WATER TREATMENT PLANT | County | MARTIN |
| State | FLORIDA | Location | | State | FLORIDA |
| SEC | TWP | API #: | | Other Services | |
| Permament Datum | PA/D | Log Measured From | PA/D | COMMENTS | |
| Drilling Measured From | PA/D | Elevation | | | |
| Date | 2-20-2008 | K.B. | | | |
| Run Number | ONE | D.F. | | | |
| Depth | 1700 | G.L. | | | |
| Open Hole Interval | 1700 | | | | |
| Bottom | 1700 | | | | |
| Top Log Interval | CASING | | | | |
| Open Hole Size | 12" | | | | |
| Type Fluid | WATER | | | | |
| Density / Viscosity | NA | | | | |
| Estimated Cement Top | DEGF. | | | | |
| Max. Recorded Temp. | 000 | | | | |
| Time Logger on Bottom | 0000 | | | | |
| Equipment Number | VA-203 | | | | |
| Location | JUPITER | | | | |
| Recorded By | LEE | | | | |
| Witnessed By | R. SMITH | | | | |
| Run Number | 12 | Size | 1260' | Timing Record | |
| Run Number | 10625 | Size | 1700' | From | To |
| Cement Record | 30" | Waters | | | |
| Surface String | 16" | 3.75 W/T | | | |
| Production String | 12" | FRP | | | |
| Bottom | 200' | SURFACE | | | |
| | 140' | SURFACE | | | |
| | 140' | | | | |
| | 967' | | | | |

All interpretations are opinions based on inferences from electrical or other measurements and we cannot and do not guarantee the accuracy or correctness of any interpretation, and we shall not, except in the case of gross or willful negligence on our part, be liable or responsible for any loss, costs, damages, or expenses incurred or sustained by anyone resulting from any interpretation made by any of our officers, agents or employees. These interpretations are also subject to our general terms and conditions set out in our current Price Schedule.

Comments

FCT
XYC/GR
DIL/LL3/SP

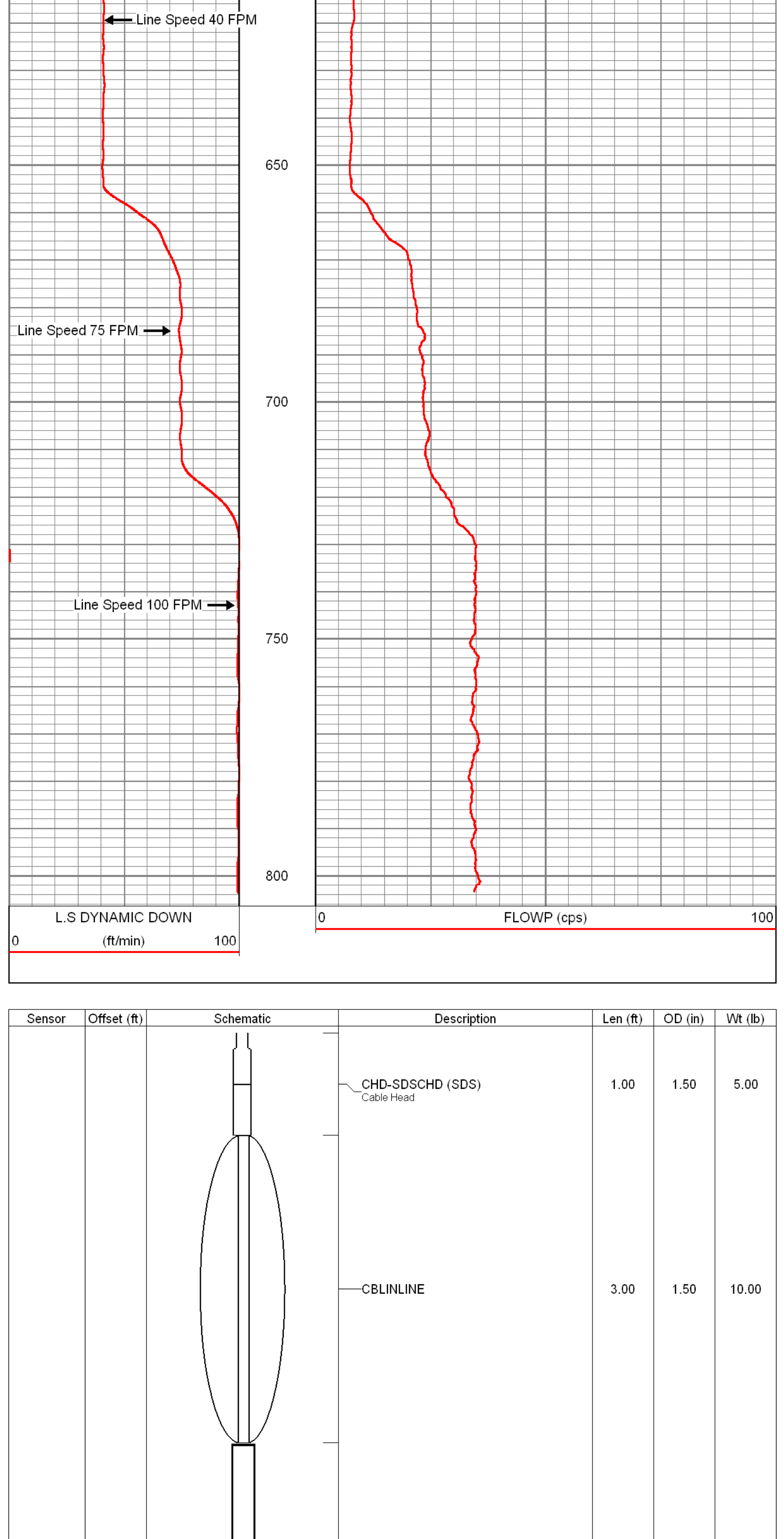
FLOWRATE = 1,663 GPM

Database File: mcr02.db
 Dataset Pathname: FMD
 Presentation Format: flow_mg
 Dataset Creation: Wed Oct 22 20:56:10 2008 by Log Open-Cased 070814
 Charted by: Depth in Feet scaled 1:240



CALS 40, 60 & 100 FPM

Database File: mcr02.db
 Dataset Pathname: FMCAL1
 Presentation Format: flow_mg
 Dataset Creation: Wed Oct 22 21:17:24 2008 by Log Open-Cased 070814
 Charted by: Depth in Feet scaled 1:240



| Sensor | Offset (ft) | Schematic | Description | Len (ft) | OD (in) | Wt (lb) |
|--------|-------------|-----------|---------------------------------------|----------|---------|---------|
| | | | CHD-SDSCHED (SDS) Cable Head | 1.00 | 1.50 | 5.00 |
| | | | CBLINE | 3.00 | 1.50 | 10.00 |
| | | | FLOWMETER-TITAN (TITAN_3") TITN_3" | 3.00 | 1.69 | 25.00 |

Dataset: mcr02.db: field/well/run1/FMCAL1
 Total Length: 7.00 ft
 Total Weight: 40.00 lb
 O.D.: 1.69 in

