



X-Y CALIPER
GAMMA RAY
LOG

Company	Seacoast Utility Authority	Country	USA
Well	NPB-1B	Field	North Palm Beach
County	Palm Beach	State	Florida
Location	Richard Road Water Treatment Plant North Palm Beach Wellfield Expansion	AP #	
SEC	JLA Geosciences, Inc.	TW/P	RGE
Log Measured From	G.L.	Elevation	
Drilling Measured From	G.L.	K/B	
Date	9-MAY-2013	D/F	G.L.
Run Number	ONE		
Depth Driller	205'		
Bottom Logged Interval	204'		
Top Log Interval			
Open Hole Size	SURFACE		
Type Fluid	WWD		
Density / Viscosity	NANA		
Max. Recorded Temp.	NA		
Estimated Cement Top	NA		
Time Well Ready	16:00 2/6/2013		
Equipment Number	16:00 2/6/2013		
Log Measured From	16:00 2/6/2013		
Log Measured To	16:00 2/6/2013		
Recorded By	S. Miller/C. Miller		
Witnessed By	A. Sullivan (JLA)		
Bohrlog Record	J. Friedrichs (JLA)		
Run Number	ONE		
Bit	7.875"		
From	8'		
To	205'		
Size	8"		
Weight	8" ID		
Top	SURFACE		
Bottom	8"		
Casing Record			
Surface String			
Prod. String			
Production String			
Choice No.	2013063		
	2x6x9x6x14x5		
	wseac-1b.db		
	FIELD PRINT		

<<< Fold Here >>>

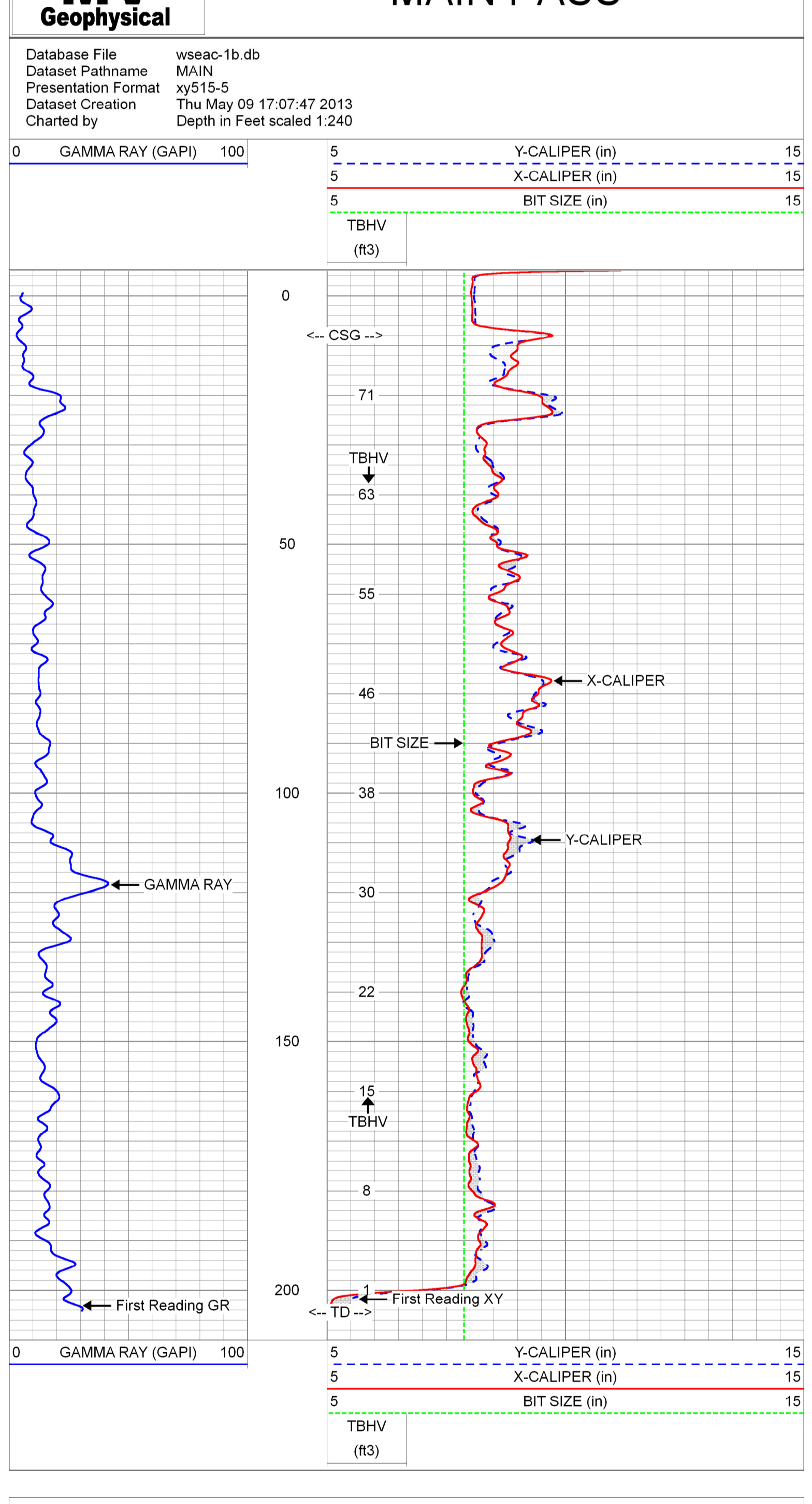
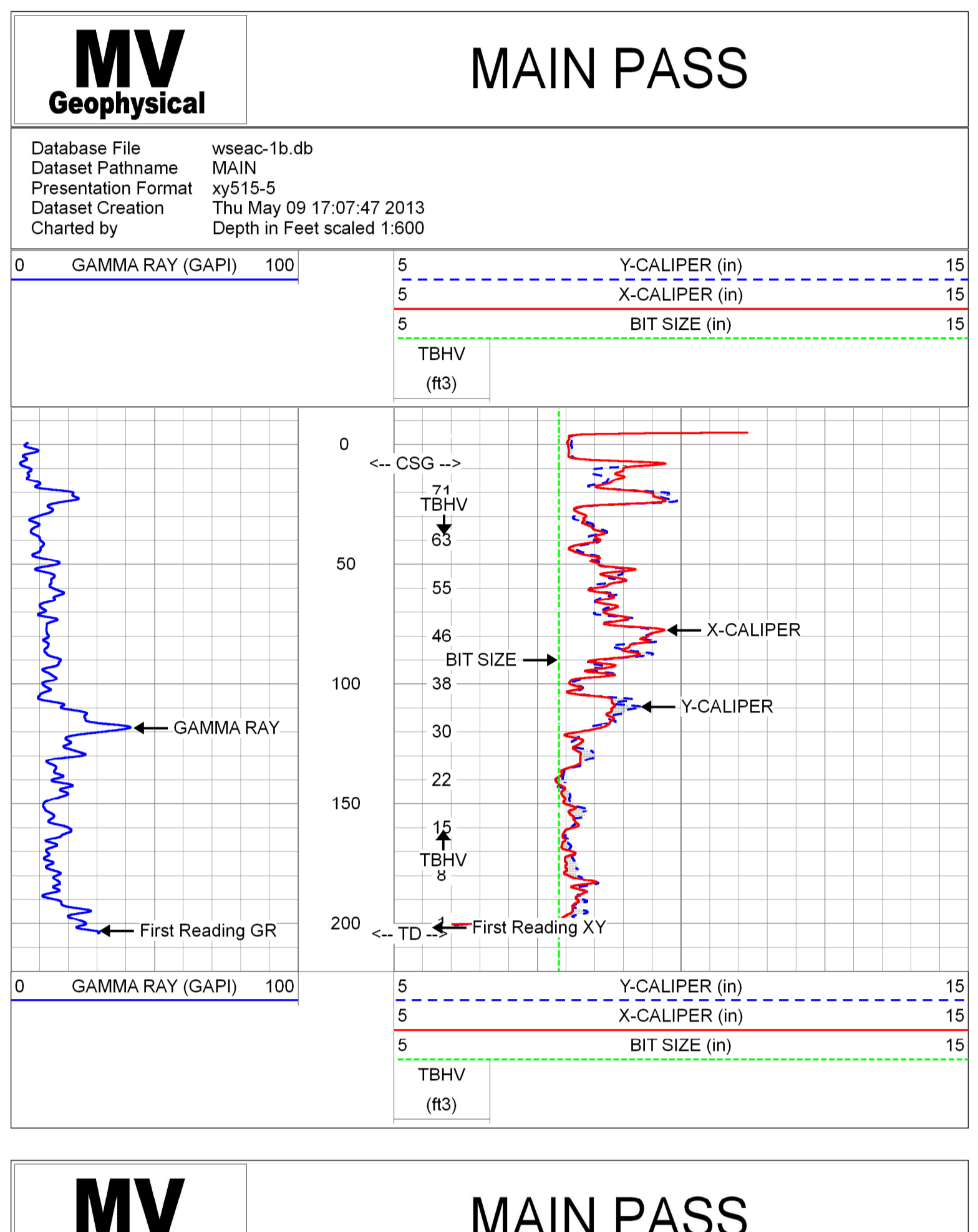
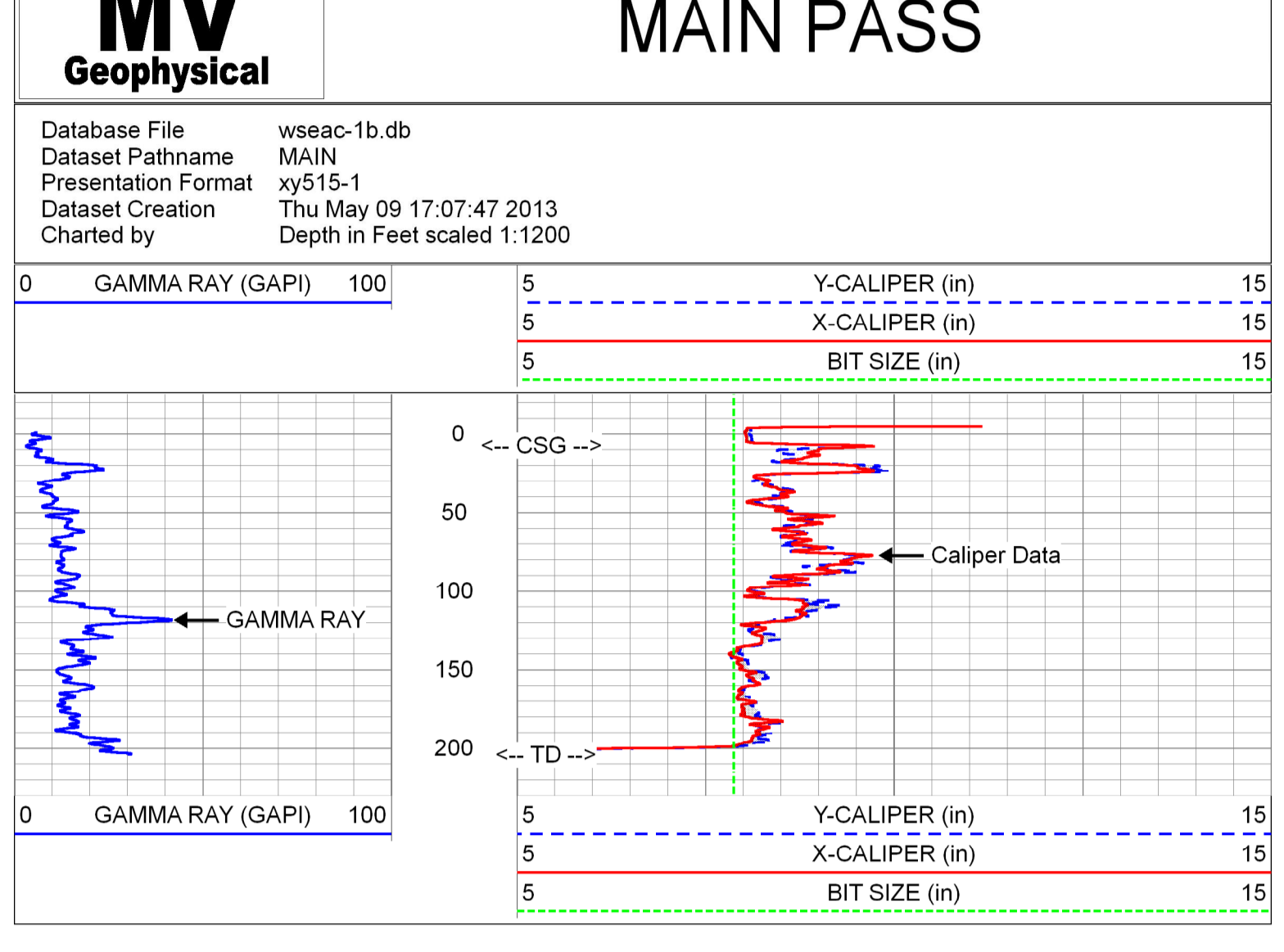
All interpretations are opinions based on inferences from electrical or other measurements and we cannot and do not guarantee the accuracy or correctness of any interpretation, and we shall not, except in the case of gross or willful negligence on our part, be liable or responsible for any loss, costs, damages, or expenses incurred or sustained by anyone resulting from any interpretation made by any of our officers, agents or employees. These interpretations are also subject to our general terms and conditions set out in our current Price Schedule.

Comments

MAXIMUM ARM EXTENSION: 33"

BOREHOLE VOLUMES IN CUBIC FEET

Drilling Contractors: Wells & Water Systems, Inc.
and American Drilling Services, Inc.



Calibration Report

Database File wseac-1b.db
Dataset Pathname pass4
Dataset Creation Thu May 09 16:14:50 2013

XY Caliper Calibration Report

Serial Number:	01S
Tool Model:	XYCS
Performed:	Thu May 09 16:17:39 2013
Small Ring:	7.875 in
Large Ring:	33 in
Reading with Small Ring:	X Caliper
Reading with Large Ring:	Y Caliper
Gain:	0.0482431
Offset:	-21.6739

Gamma Ray Calibration Report

Serial Number:	01
Tool Model:	GROH
Performed:	Tue May 07 09:59:57 2013
Calibrator Value:	120.0 GAPI
Background Reading:	14.2 cps
Calibrator Reading:	134.8 cps
Sensitivity:	0.9954 GAPI/cps

Sensor	Offset (ft)	Schematic	Description	Length (ft)	O.D. (in)	Weight (lb)
			GR-GROH (01)	2.75	3.50	40.00
GR	5.00					
			XYC-XYCS (01S)	6.60	3.50	110.00
YCAL	0.50					
XCAL	0.50					

Dataset: wseac-1b.db: field/well/run1/pass4
Total length: 9.35 ft
Total weight: 150.00 lb
O.D.: 3.50 in