

Company	Seacoast Utility Authority	Country	USA
Well	NPB-2B	Field	North Palm Beach
County	Palm Beach	State	Florida
Location	Richard Road Water Treatment Plant North Palm Beach Wellfield Expansion JLA Geotechnics, Inc.	AP#	
SEC	T/V/R	RSGE	
Permanent Datum	G.L.	Elevation	
Log Measured From	G.L.	K.B.	
Drilling Measured From	G.L.	D.F.	
Date	13-MAY-2013	Run Number	ONE
Depth Drier	205'	Depth Logger	205'
Tool Joint Interval	205'	Tool Joint Interval	205'
Open Hole Size	SURFACE	Type Fluid	MUD
Type Fluid	MUD	Density / Viscosity	NNNA
Density / Viscosity	NNNA	Max. Recorded Temp.	NA
Estimated Cement Top	17:00 5/13/2013	Time Well Ready	17:15 5/13/2013
Equipment Number	FW515-1	Recorded By	S. Miller/C. Miller
Witnessed By	A. Giuliano (JLA)	Run Number	ONE
Run Number	ONE	Bit Size	8"
Run Number	ONE	From	205'
Run Number	ONE	To	205'
Run Number	ONE	Weight	
Run Number	ONE	Tubing Record	
Run Number	ONE	From	
Run Number	ONE	To	
Run Number	ONE	Size	8"
Run Number	ONE	Wt/Ft	
Run Number	ONE	8" ID	
Run Number	ONE	SURFACE	
Run Number	ONE	Top	
Run Number	ONE	Bottom	
Run Number	ONE	8"	
Run Number	ONE	FIELD PRINT	
Run Number	ONE	20130965	
Run Number	ONE	2489cdcllas	
Run Number	ONE	wseac-2b.db	

<<< Fold Here >>>

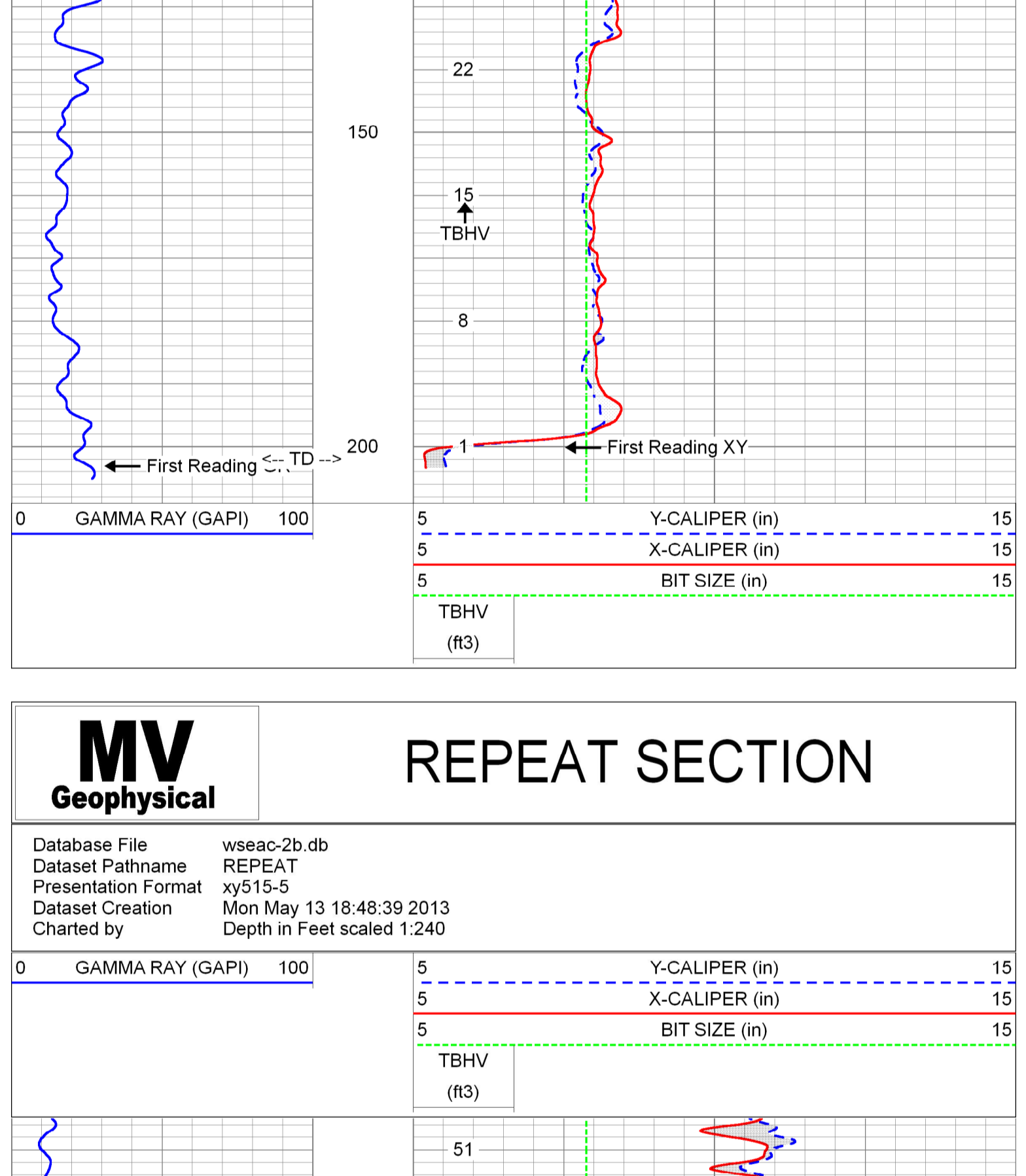
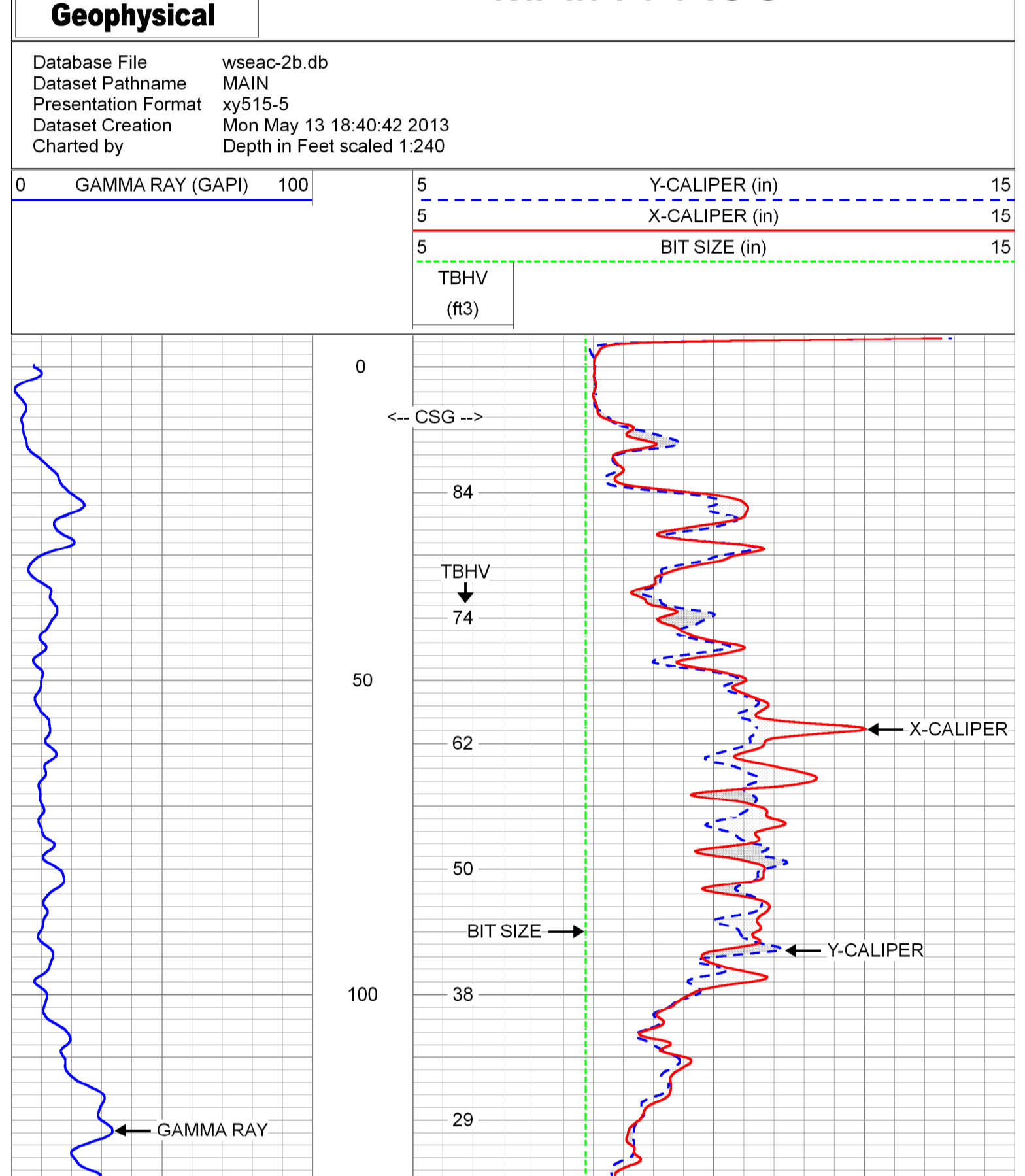
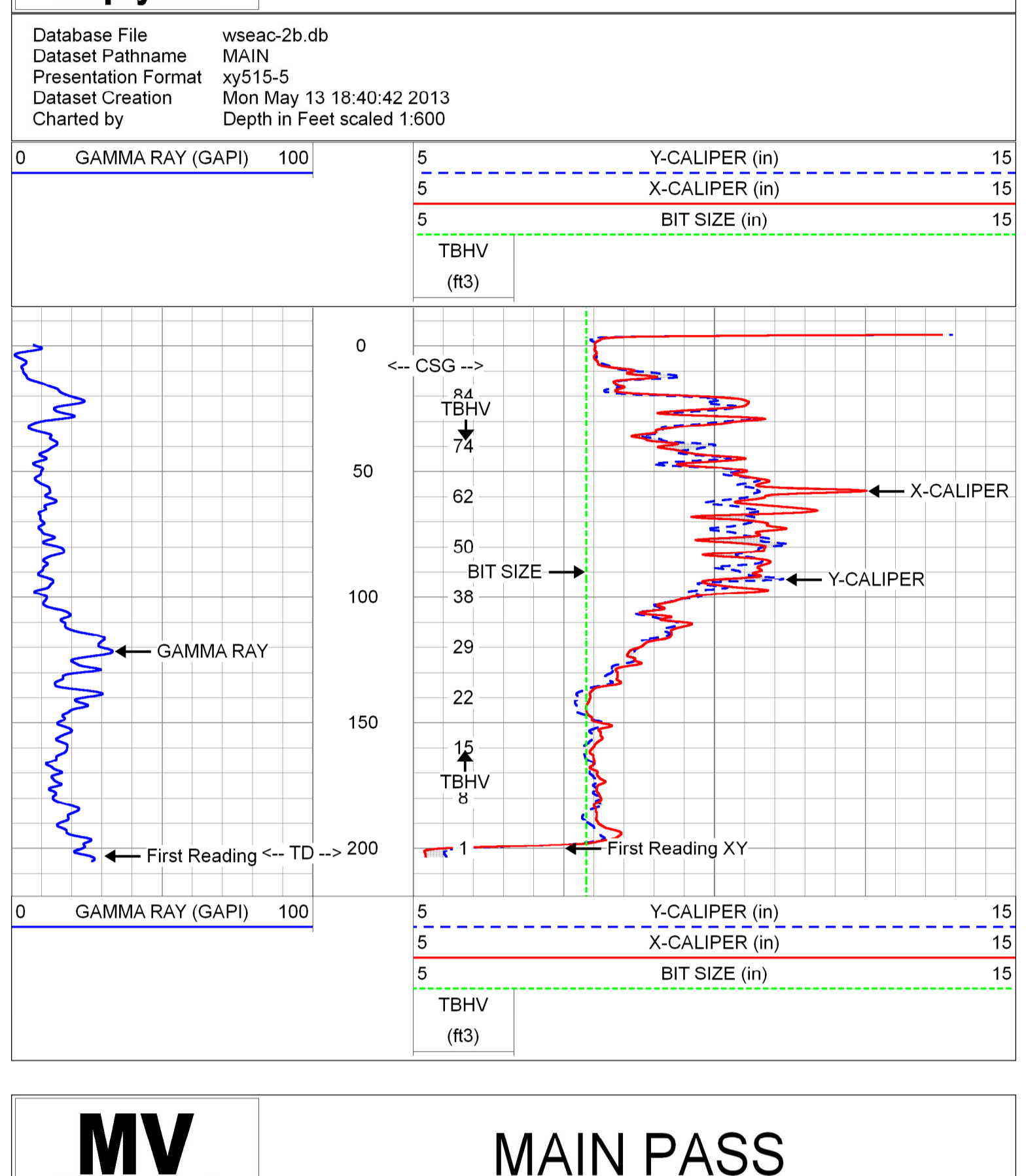
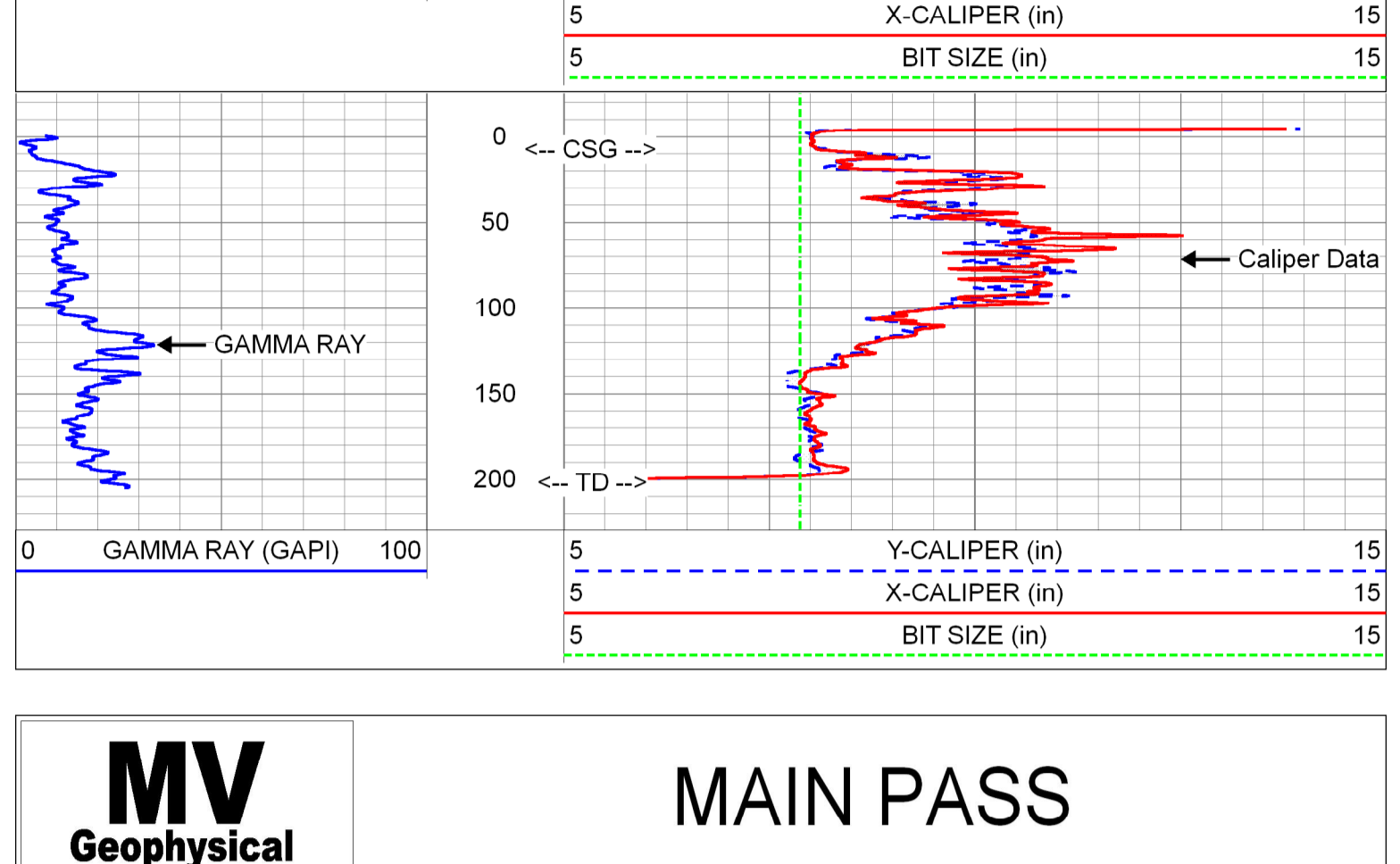
All interpretations are opinions based on inferences from electrical or other measurements and we cannot and do not guarantee the accuracy or correctness of any interpretation, and we shall not, except in the case of gross or other negligence on our part, be liable or responsible for any loss, costs, damages, or expenses incurred or sustained by anyone resulting from any interpretation made by any of our officers, agents or employees. These interpretations are also subject to our general terms and conditions set out in our current Price Schedule.

**Comments**

MAXIMUM ARM EXTENSION: 33"

BOREHOLE VOLUMES IN CUBIC FEET

Drilling Contractors: Wells & Water Systems, Inc.  
and American Drilling Services, Inc.



**Calibration Report**

Database File: wseac-2b.db  
Dataset Pathname: pass4  
Dataset Creation: Mon May 13 17:50:19 2013

**XY Caliper Calibration Report**

Serial Number: 01S  
Tool Model: XYCS  
Performed: Mon May 13 17:45:34 2013

Small Ring: 7.875 in  
Large Ring: 3.3 in

Reading with Small Ring: 607.5 cps  
Reading with Large Ring: 1133.3 cps

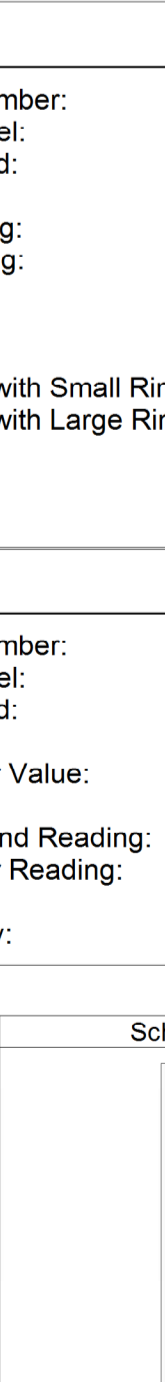
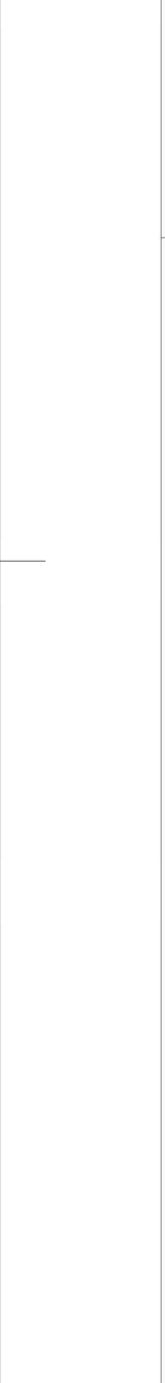
Gain: 0.0477843  
Offset: -21.154

**Gamma Ray Calibration Report**

Serial Number: 01  
Tool Model: GROH  
Performed: Mon May 13 17:36:28 2013

Calibrator Value: 120.0 GAPI  
Background Reading: 15.7 cps  
Calibration Reading: 135.7 cps

Sensitivity: 0.9996 GAPI/cps

Sensor	Offset (ft)	Schematic	Description	Length (ft)	O.D. (in)	Weight (lb)
GR	5.00		GR-GROH (01)	2.75	3.50	40.00
YCAL XCAL	0.50 0.50		XYC-XYCS (01S)	6.60	3.50	110.00

Dataset: wseac-1b.db: field/well/run1/pass4  
Total length: 9.35 ft  
Total weight: 150.00 lb  
O.D.: 3.50 in