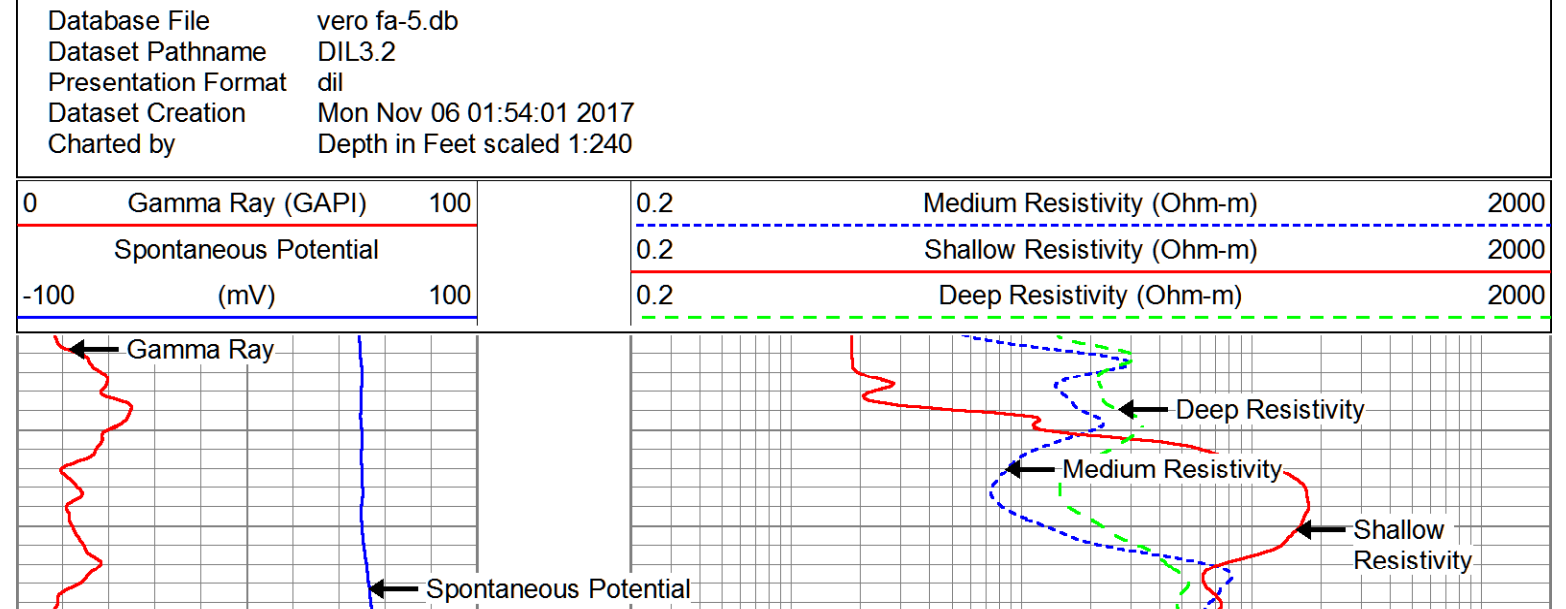
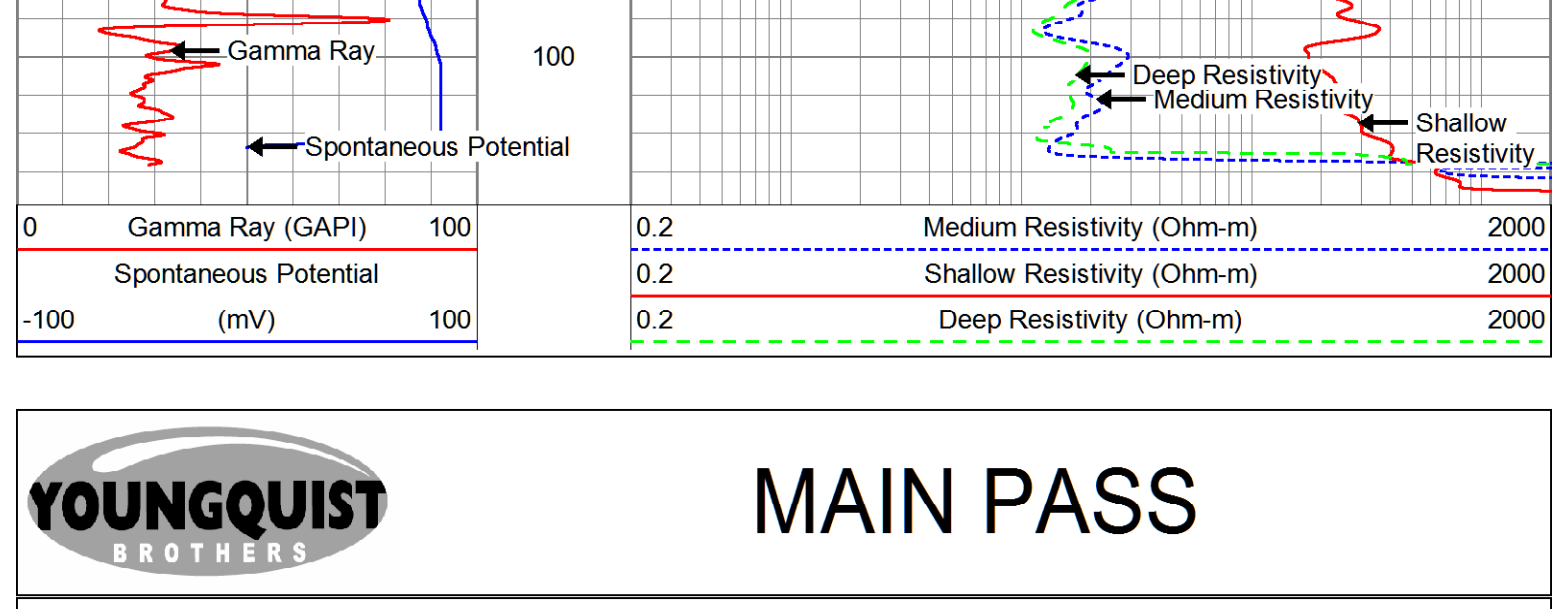
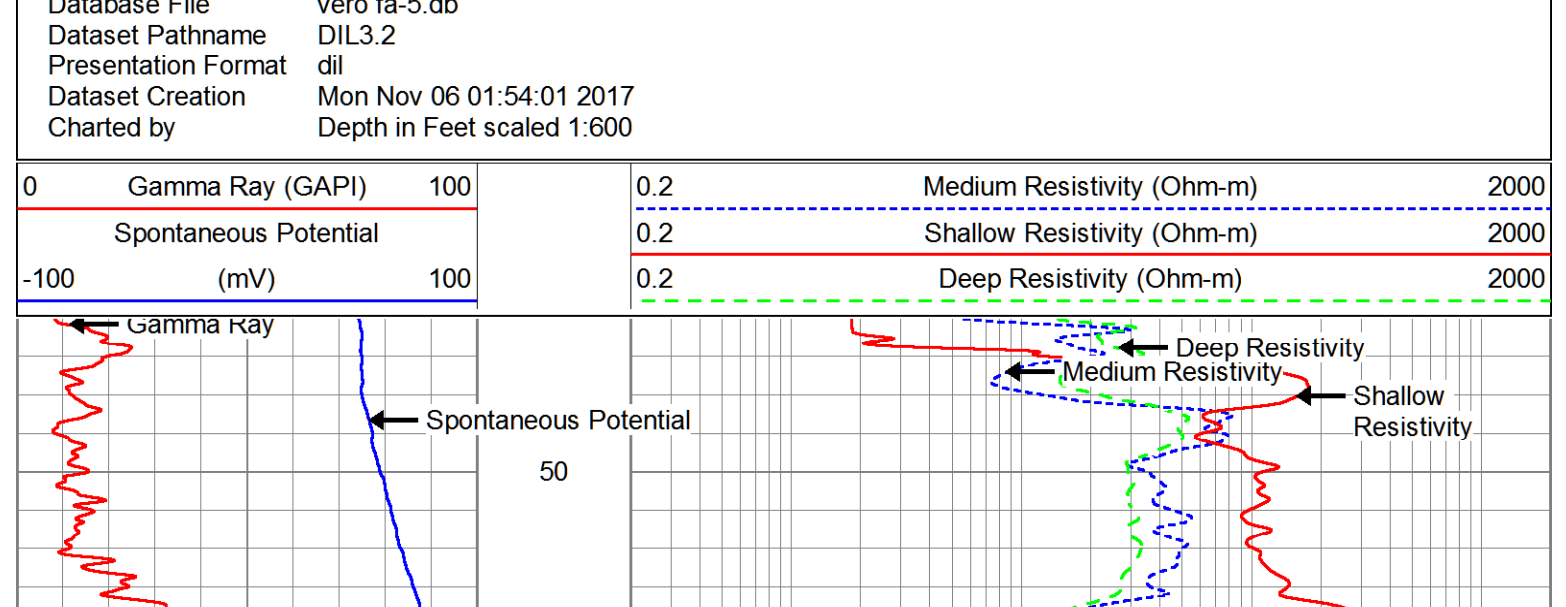
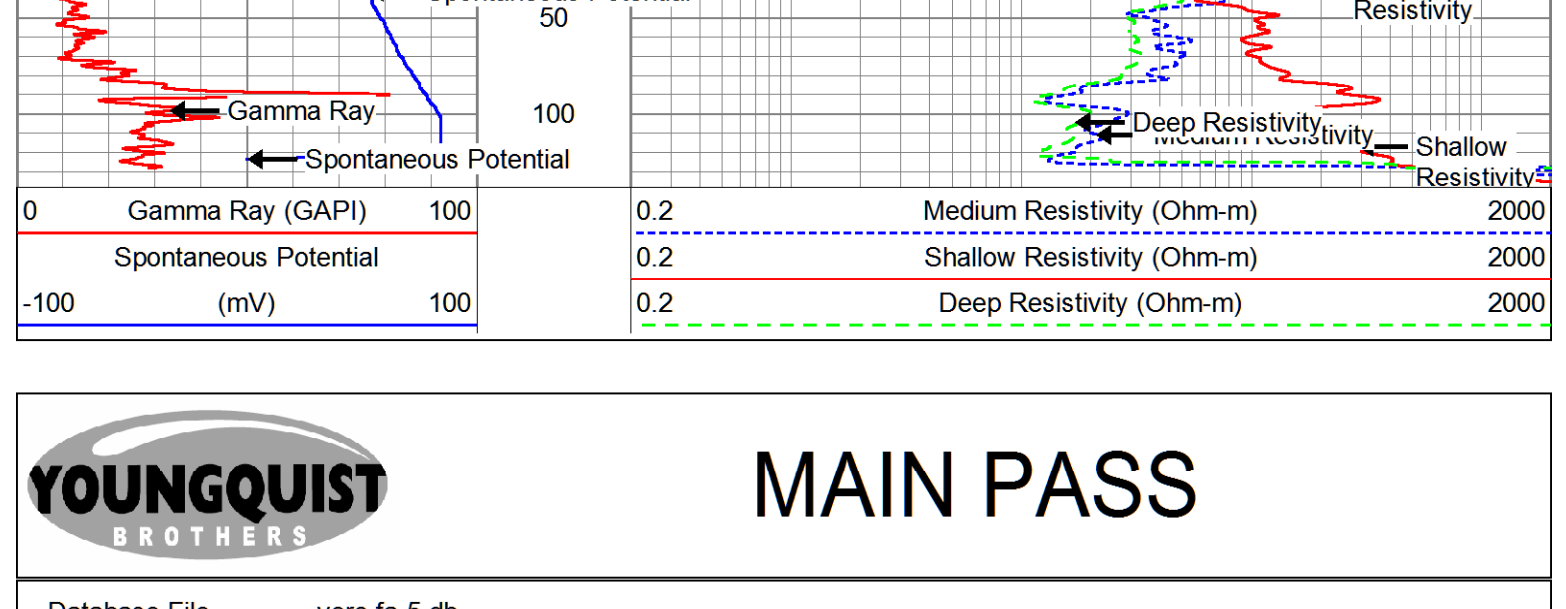


Company	FP&L	Well	FA-5	Field	OCEC	County	OKEECHOBEE	State	FLORIDA
Date	NOVEMBER 6 2017	Location:	API #:	SEC	TWP	RGE	Elevation	Other Services	
Well Number	137	Permanent Datum	STATE ROAD 80	M.M.	5.5	SEE COMMENTS		SEE COMMENTS	
Depth Logger	137	Log Measured From		K.F.		Elevation		SEE COMMENTS	
Bottom Logged Interval	SURFACE	Drilling Measured From		D.L.		G.L.		SEE COMMENTS	
Top Log Interval	12.25'	Run Number	ONE	Date					
Open Hole Size	6.00"	Run Number	TWO	Date					
Type Fluid	NA	Run Number	THREE	Date					
Fluid Viscosity	NA	Run Number	FOUR	Date					
Estimated Cement Top	NA	Run Number	FIVE	Date					
Time Logger on Bottom	00:00 HRS	Run Number	SIX	Date					
Equipment Number	FT100	Run Number	SEVEN	Date					
Recorded By	E. ANDERSON	Run Number	EIGHT	Date					
Witnessed By	R. MILLER	Run Number	NINE	Date					
Run Number	ONE	Run Number	TEN	Date					
Run Date	12/23	Run Number	ELEVEN	Date					
Run Time	07:15	Run Number	TWELVE	Date					
Run From	0	Run Number	THIRTEEN	Date					
Run To	130	Run Number	FOURTEEN	Date					
Run By	BM	Run Number	FIFTEEN	Date					
Run By	BM	Run Number	SIXTEEN	Date					
Run By	BM	Run Number	SEVENTEEN	Date					
Run By	BM	Run Number	EIGHTEEN	Date					
Run By	BM	Run Number	NINETEEN	Date					
Run By	BM	Run Number	TWENTY	Date					
Run By	BM	Run Number	TWENTYONE	Date					
Run By	BM	Run Number	TWENTYTWO	Date					
Run By	BM	Run Number	TWENTYTHREE	Date					
Run By	BM	Run Number	TWENTYFOUR	Date					
Run By	BM	Run Number	TWENTYFIVE	Date					
Run By	BM	Run Number	TWENTYSIX	Date					
Run By	BM	Run Number	TWENTYSEVEN	Date					
Run By	BM	Run Number	TWENTYEIGHT	Date					
Run By	BM	Run Number	TWENTYNINE	Date					
Run By	BM	Run Number	THIRTY	Date					
Run By	BM	Run Number	THIRTYONE	Date					
Run By	BM	Run Number	THIRTYTWO	Date					
Run By	BM	Run Number	THIRTYTHREE	Date					
Run By	BM	Run Number	THIRTYFOUR	Date					
Run By	BM	Run Number	THIRTYFIVE	Date					
Run By	BM	Run Number	THIRTYSIX	Date					
Run By	BM	Run Number	THIRTYSEVEN	Date					
Run By	BM	Run Number	THIRTYEIGHT	Date					
Run By	BM	Run Number	THIRTYNINE	Date					
Run By	BM	Run Number	FOURTY	Date					
Run By	BM	Run Number	FOURTYONE	Date					
Run By	BM	Run Number	FOURTYTWO	Date					
Run By	BM	Run Number	FOURTYTHREE	Date					
Run By	BM	Run Number	FOURTYFOUR	Date					
Run By	BM	Run Number	FOURTYFIVE	Date					
Run By	BM	Run Number	FOURTYSIX	Date					
Run By	BM	Run Number	FOURTYSEVEN	Date					
Run By	BM	Run Number	FOURTYEIGHT	Date					
Run By	BM	Run Number	FOURTYNINE	Date					
Run By	BM	Run Number	FIFTY	Date					
Run By	BM	Run Number	FIFTYONE	Date					
Run By	BM	Run Number	FIFTYTWO	Date					
Run By	BM	Run Number	FIFTYTHREE	Date					
Run By	BM	Run Number	FIFTYFOUR	Date					
Run By	BM	Run Number	FIFTYFIVE	Date					
Run By	BM	Run Number	FIFTYSIX	Date					
Run By	BM	Run Number	FIFTYSEVEN	Date					
Run By	BM	Run Number	FIFTYEIGHT	Date					
Run By	BM	Run Number	FIFTYNINE	Date					
Run By	BM	Run Number	SIXTY	Date					
Run By	BM	Run Number	SIXTYONE	Date					
Run By	BM	Run Number	SIXTYTWO	Date					
Run By	BM	Run Number	SIXTYTHREE	Date					
Run By	BM	Run Number	SIXTYFOUR	Date					
Run By	BM	Run Number	SIXTYFIVE	Date					
Run By	BM	Run Number	SIXTYSIX	Date					
Run By	BM	Run Number	SIXTYSEVEN	Date					
Run By	BM	Run Number	SIXTYEIGHT	Date					
Run By	BM	Run Number	SIXTYNINE	Date					
Run By	BM	Run Number	SEVENTY	Date					
Run By	BM	Run Number	SEVENTYONE	Date					
Run By	BM	Run Number	SEVENTYTWO	Date					
Run By	BM	Run Number	SEVENTYTHREE	Date					
Run By	BM	Run Number	SEVENTYFOUR	Date					
Run By	BM	Run Number	SEVENTYFIVE	Date					
Run By	BM	Run Number	SEVENTYSIX	Date					
Run By	BM	Run Number	SEVENTYSEVEN	Date					
Run By	BM	Run Number	SEVENTYEIGHT	Date					
Run By	BM	Run Number	SEVENTYNINE	Date					
Run By	BM	Run Number	EIGHTY	Date					
Run By	BM	Run Number	EIGHTYONE	Date					
Run By	BM	Run Number	EIGHTYTWO	Date					
Run By	BM	Run Number	EIGHTYTHREE	Date					
Run By	BM	Run Number	EIGHTYFOUR	Date					
Run By	BM	Run Number	EIGHTYFIVE	Date					
Run By	BM	Run Number	EIGHTYSIX	Date					
Run By	BM	Run Number	EIGHTYSEVEN	Date					
Run By	BM	Run Number	EIGHTYEIGHT	Date					
Run By	BM	Run Number	EIGHTYNINE	Date					
Run By	BM	Run Number	NINETY	Date					
Run By	BM	Run Number	NINETYONE	Date					
Run By	BM	Run Number	NINETYTWO	Date					
Run By	BM	Run Number	NINETYTHREE	Date					
Run By	BM	Run Number	NINETYFOUR	Date					
Run By	BM	Run Number	NINETYFIVE	Date					
Run By	BM	Run Number	NINETYSIX	Date					
Run By	BM	Run Number	NINETYSEVEN	Date					
Run By	BM	Run Number	NINETYEIGHT	Date					
Run By	BM	Run Number	NINETYNINE	Date					
Run By	BM	Run Number	HUNDRED	Date					

All interpretations are opinions based on inferences from electrical or other measurements and we cannot and do not guarantee the accuracy or correctness of any interpretation, and we shall not, except in the case of gross or willful negligence on our part, be liable or responsible for any loss, costs, damages, or expenses incurred or sustained by anyone resulting from any interpretation made by any of our officers, agents or employees. These interpretations are also subject to our general terms and conditions set out in our current Price Schedule.

Comments

OTHER SERVICES
GAMMA RAY WITH X Y CALIPER



Calibration Report

Database File: vero fa-5.db
Dataset Pathname: DIL
Dataset Creation: Mon Nov 06 01:17:22 2017

Dual Induction Calibration Report

Serial-Model: 1010-C
Surface Cal Performed: Fri May 17 09:36:49 2013
Downhole Cal Performed: Mon Nov 06 01:07:44 2017
After Survey Verification Performed: Mon Nov 06 01:07:44 2017

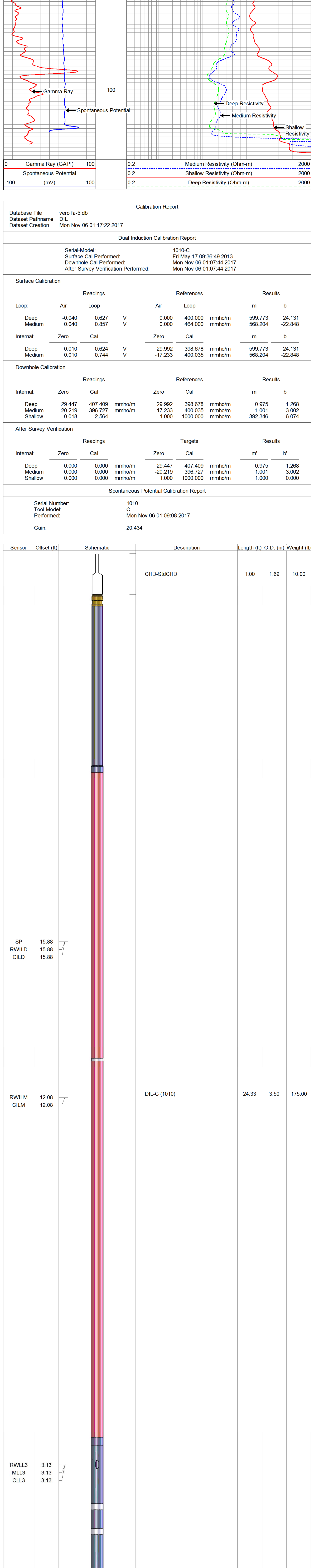
Surface Calibration		Readings		References		Results	
Loop:		Air	Loop	Air	Loop	m	b
Deep		-0.040	0.627	0.000	400.000	599.773	24.131
Medium		0.040	0.857	0.000	464.000	568.204	-22.848
Internal:		Zero	Cal	Zero	Cal	m	b
Deep		0.010	0.624	29.992	398.678	599.773	24.131
Medium		0.010	0.744	-17.233	400.035	568.204	-22.848

Downhole Calibration		Readings		References		Results	
Internal:		Zero	Cal	Zero	Cal	m	b
Deep		29.447	407.409	29.992	398.678	0.975	1.268
Medium		-20.219	396.727	-17.233	400.035	1.001	3.002
Shallow		0.018	2.564	1.000	1000.000	392.346	-6.074

After Survey Verification		Readings		Targets		Results	
Internal:		Zero	Cal	Zero	Cal	m'	b'
Deep		0.000	0.000	29.447	407.409	0.975	1.268
Medium		0.000	0.000	-20.219	396.727	1.001	3.002
Shallow		0.000	0.000	1.000	1000.000	1.000	0.000

Spontaneous Potential Calibration Report

Serial Number: 1010
Tool Model: C
Performed: Mon Nov 06 01:09:08 2017
Gain: 20.434



Dataset: vero fa-5.db; field/well/run1/DIL3.2
Total length: 25.33 ft
Total weight: 185.00 lb
O.D.: 3.50 in



XY-CALIPER GAMMA-RAY LOG

Company	FP&L	Well	FA-5	Field	OCEC	County	OKEECHOBEE	State	FLORIDA
Location:	STATE ROAD 80		M.M. 5.5						
SEC	TMP	RCE	Elevation						
Log Measured From	Permanent Datum	Log Measured From	Drilling Measured From						
Date	Run Number	Depth	Bottom	Bottom	Top	Top	Top	Top	Top
NOVEMBER 6, 2017	ONE	135'	137'	137'	137'	137'	137'	137'	137'
Open Hole Interval	Surface	Open Hole Size	WID	WID	WID	WID	WID	WID	WID
12.25"	12.25"	12.25"	8.975"	8.975"	8.975"	8.975"	8.975"	8.975"	8.975"
Type Fluid	WUD	Density / Viscosity	NA	NA	NA	NA	NA	NA	NA
Estimated Cement Top	Estimated Cement Top	Estimated Cement Top	Estimated Cement Top	Estimated Cement Top	Estimated Cement Top	Estimated Cement Top	Estimated Cement Top	Estimated Cement Top	Estimated Cement Top
Time Well Head Bottom	Time Well Head Bottom	Time Well Head Bottom	Time Well Head Bottom	Time Well Head Bottom	Time Well Head Bottom	Time Well Head Bottom	Time Well Head Bottom	Time Well Head Bottom	Time Well Head Bottom
0000 HRS	0000 HRS	0000 HRS	0000 HRS	0000 HRS	0000 HRS	0000 HRS	0000 HRS	0000 HRS	0000 HRS
Location Number	Location Number	Location Number	Location Number	Location Number	Location Number	Location Number	Location Number	Location Number	Location Number
107	107	107	107	107	107	107	107	107	107
Recorded By	Recorded By	Recorded By	Recorded By	Recorded By	Recorded By	Recorded By	Recorded By	Recorded By	Recorded By
E. ANDERSON	E. ANDERSON	E. ANDERSON	E. ANDERSON	E. ANDERSON	E. ANDERSON	E. ANDERSON	E. ANDERSON	E. ANDERSON	E. ANDERSON
Witnessed By	Witnessed By	Witnessed By	Witnessed By	Witnessed By	Witnessed By	Witnessed By	Witnessed By	Witnessed By	Witnessed By
R. MILLER	R. MILLER	R. MILLER	R. MILLER	R. MILLER	R. MILLER	R. MILLER	R. MILLER	R. MILLER	R. MILLER
Run Number	Run Number	Run Number	Run Number	Run Number	Run Number	Run Number	Run Number	Run Number	Run Number
ONE	ONE	ONE	ONE	ONE	ONE	ONE	ONE	ONE	ONE
Bit	Bit	Bit	Bit	Bit	Bit	Bit	Bit	Bit	Bit
12.25"	12.25"	12.25"	12.25"	12.25"	12.25"	12.25"	12.25"	12.25"	12.25"
From	From	From	From	From	From	From	From	From	From
0'	0'	0'	0'	0'	0'	0'	0'	0'	0'
To	To	To	To	To	To	To	To	To	To
138'	138'	138'	138'	138'	138'	138'	138'	138'	138'
Run No	Run No	Run No	Run No	Run No	Run No	Run No	Run No	Run No	Run No
1	1	1	1	1	1	1	1	1	1
Bit	Bit	Bit	Bit	Bit	Bit	Bit	Bit	Bit	Bit
From	From	From	From	From	From	From	From	From	From
0'	0'	0'	0'	0'	0'	0'	0'	0'	0'
To	To	To	To	To	To	To	To	To	To
138'	138'	138'	138'	138'	138'	138'	138'	138'	138'
Size	Size	Size	Size	Size	Size	Size	Size	Size	Size
WYFT	WYFT	WYFT	WYFT	WYFT	WYFT	WYFT	WYFT	WYFT	WYFT
Top	Top	Top	Top	Top	Top	Top	Top	Top	Top
Bottom	Bottom	Bottom	Bottom	Bottom	Bottom	Bottom	Bottom	Bottom	Bottom
138'	138'	138'	138'	138'	138'	138'	138'	138'	138'

<<< Fold Here >>>

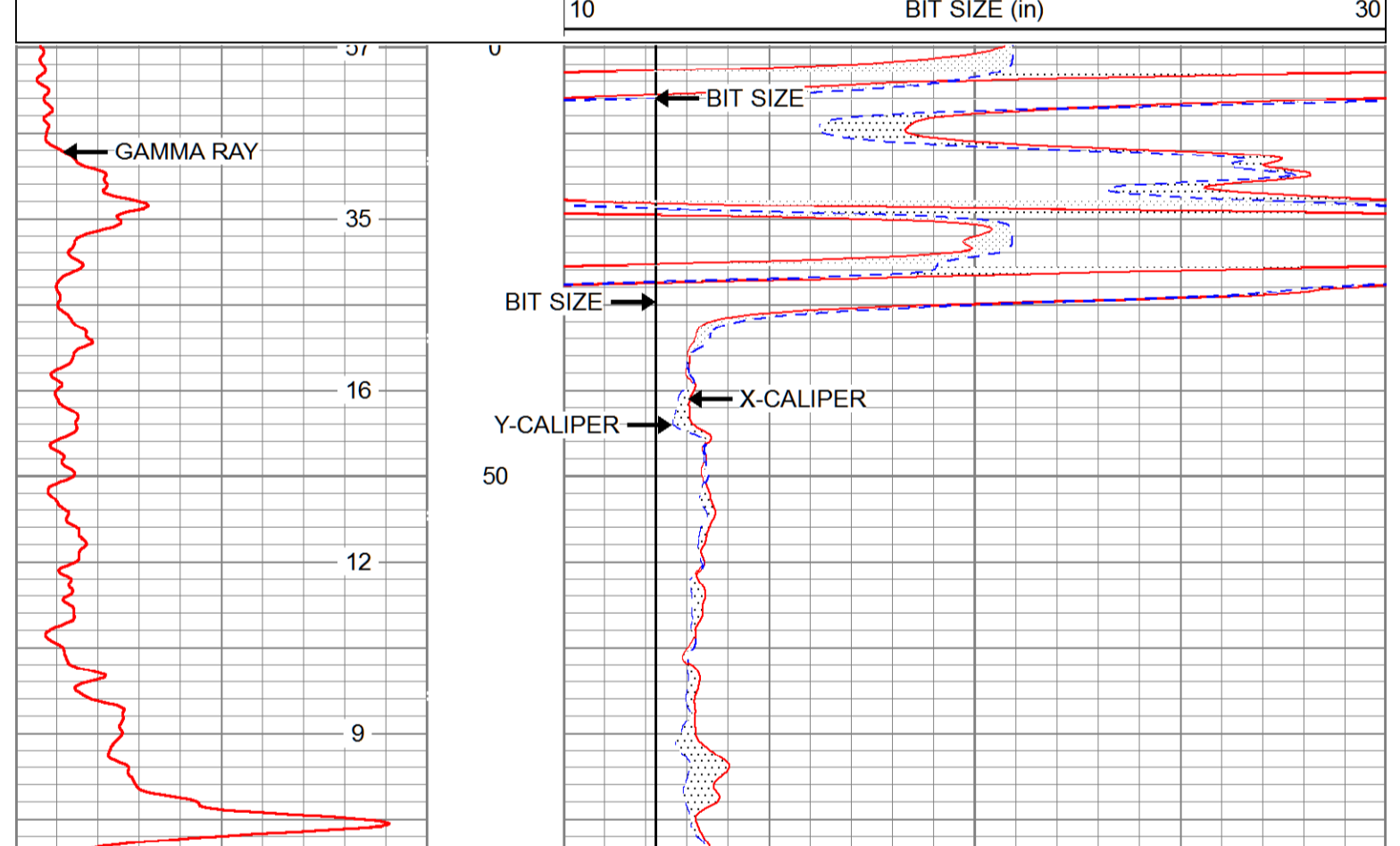
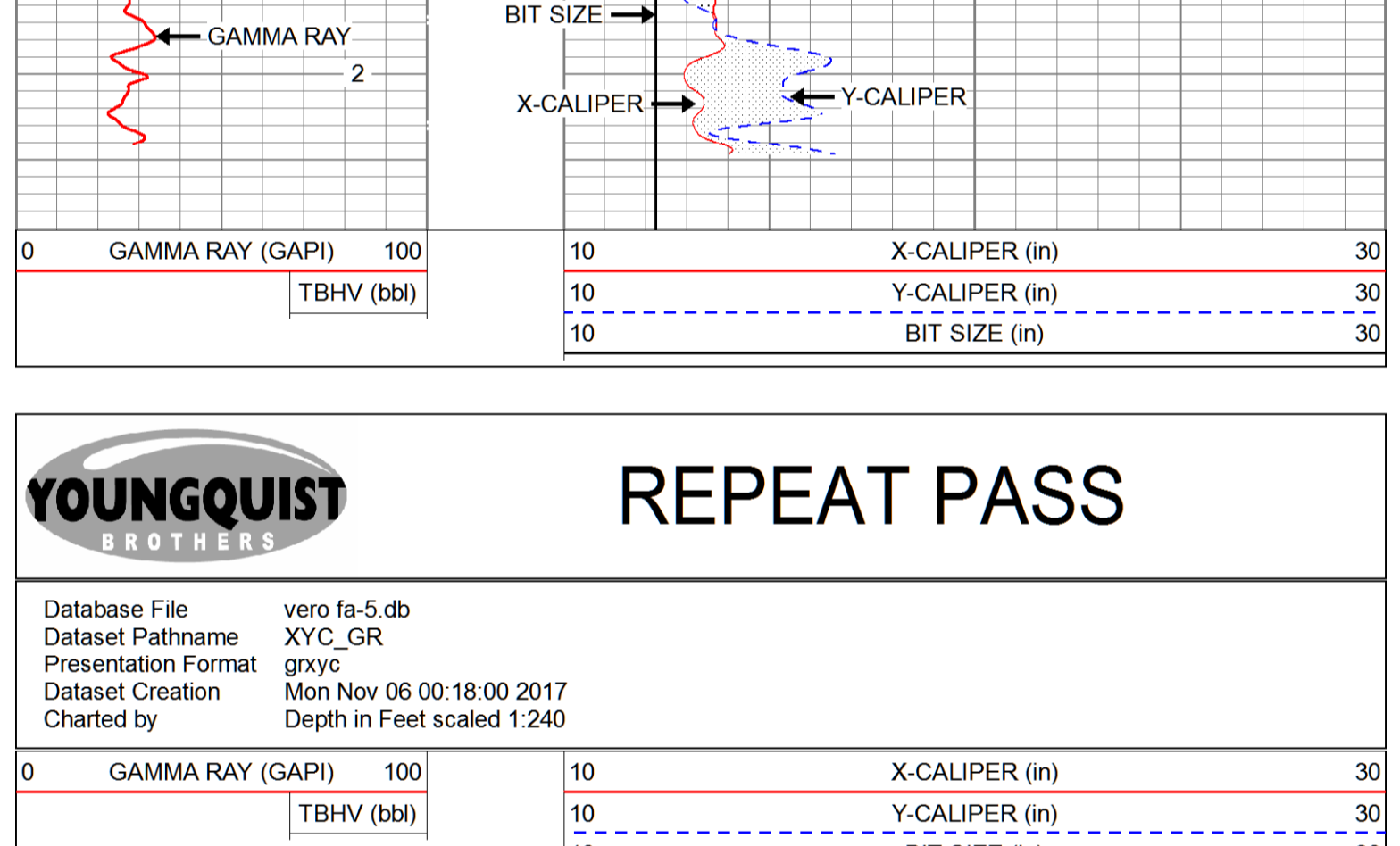
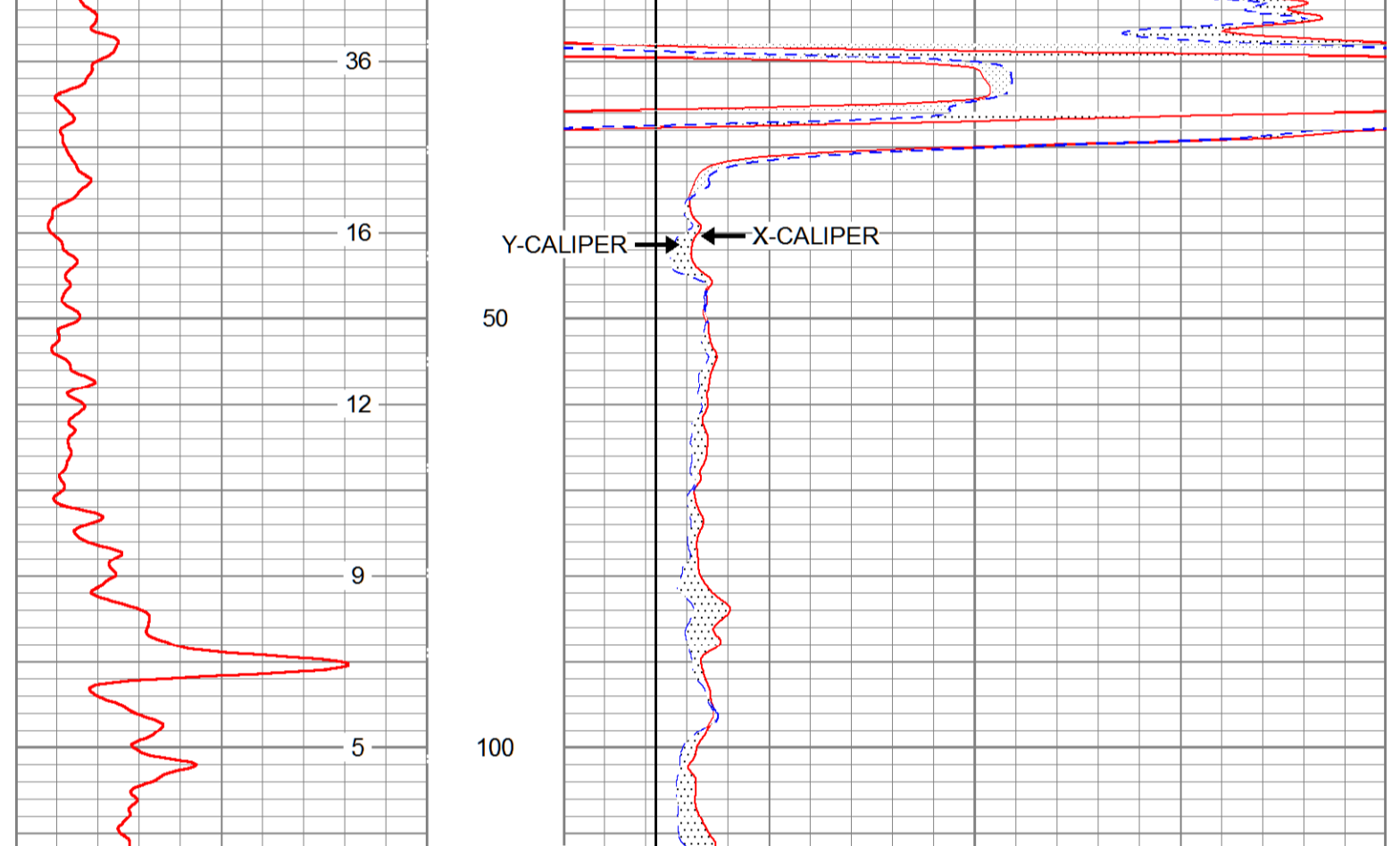
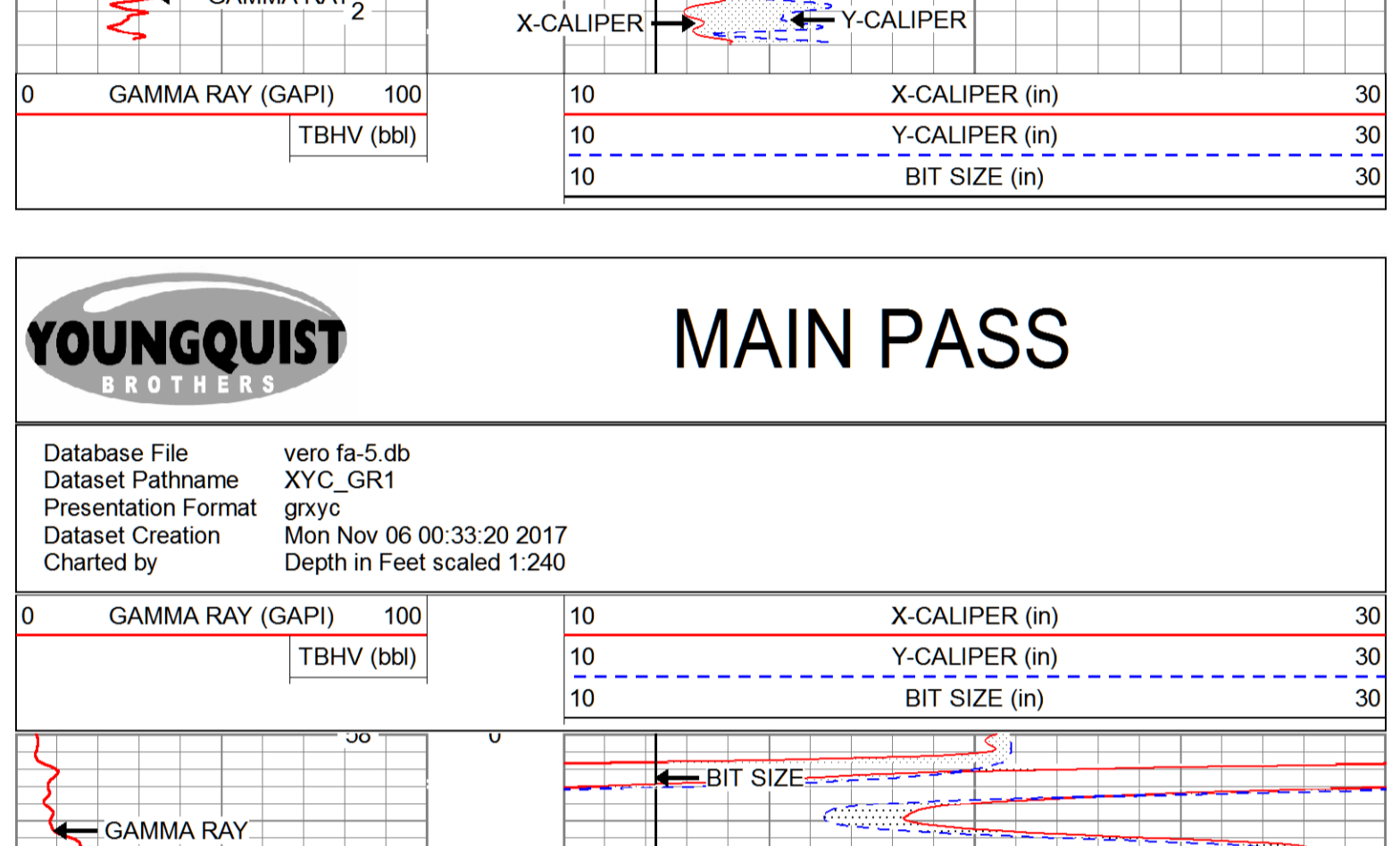
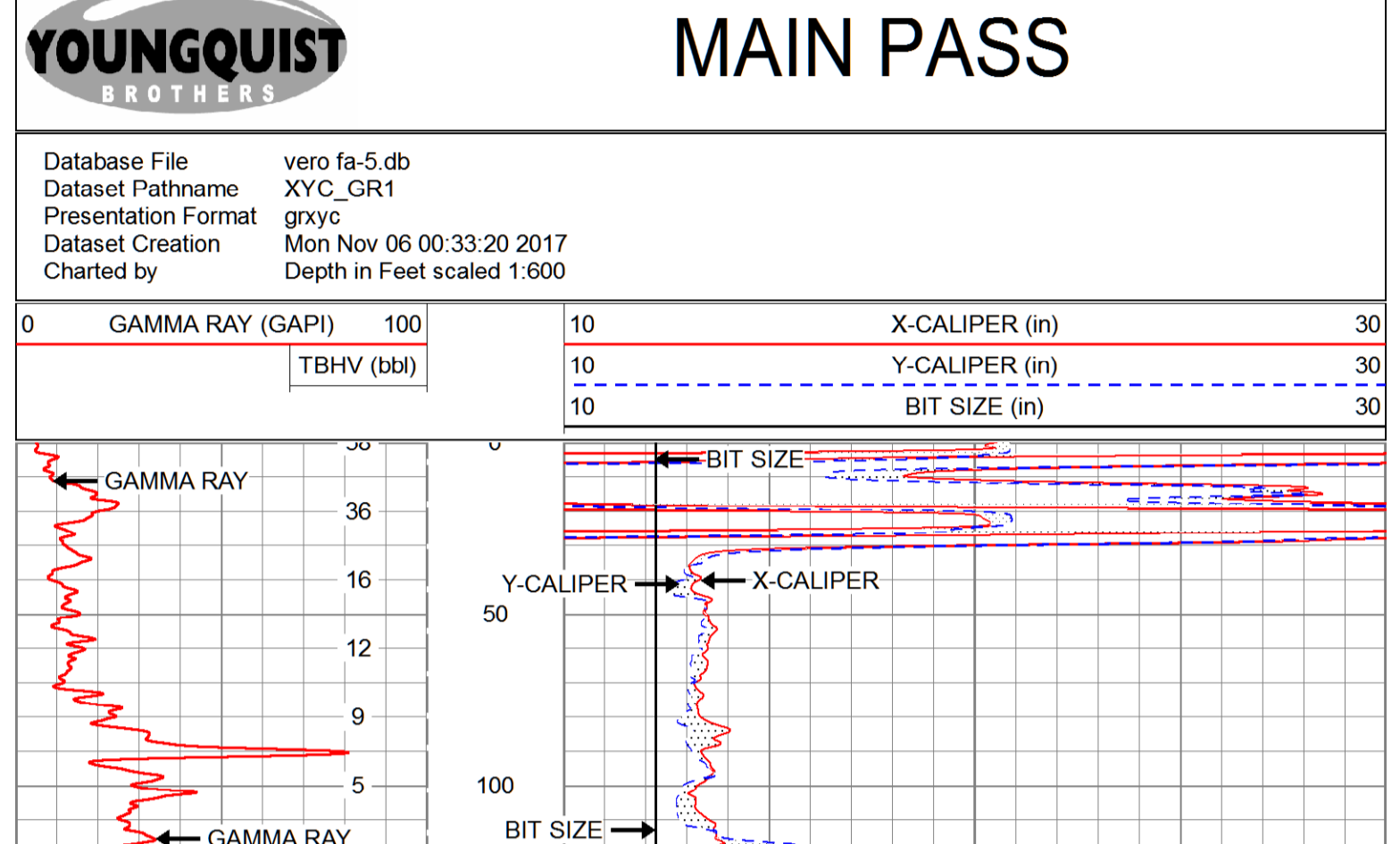
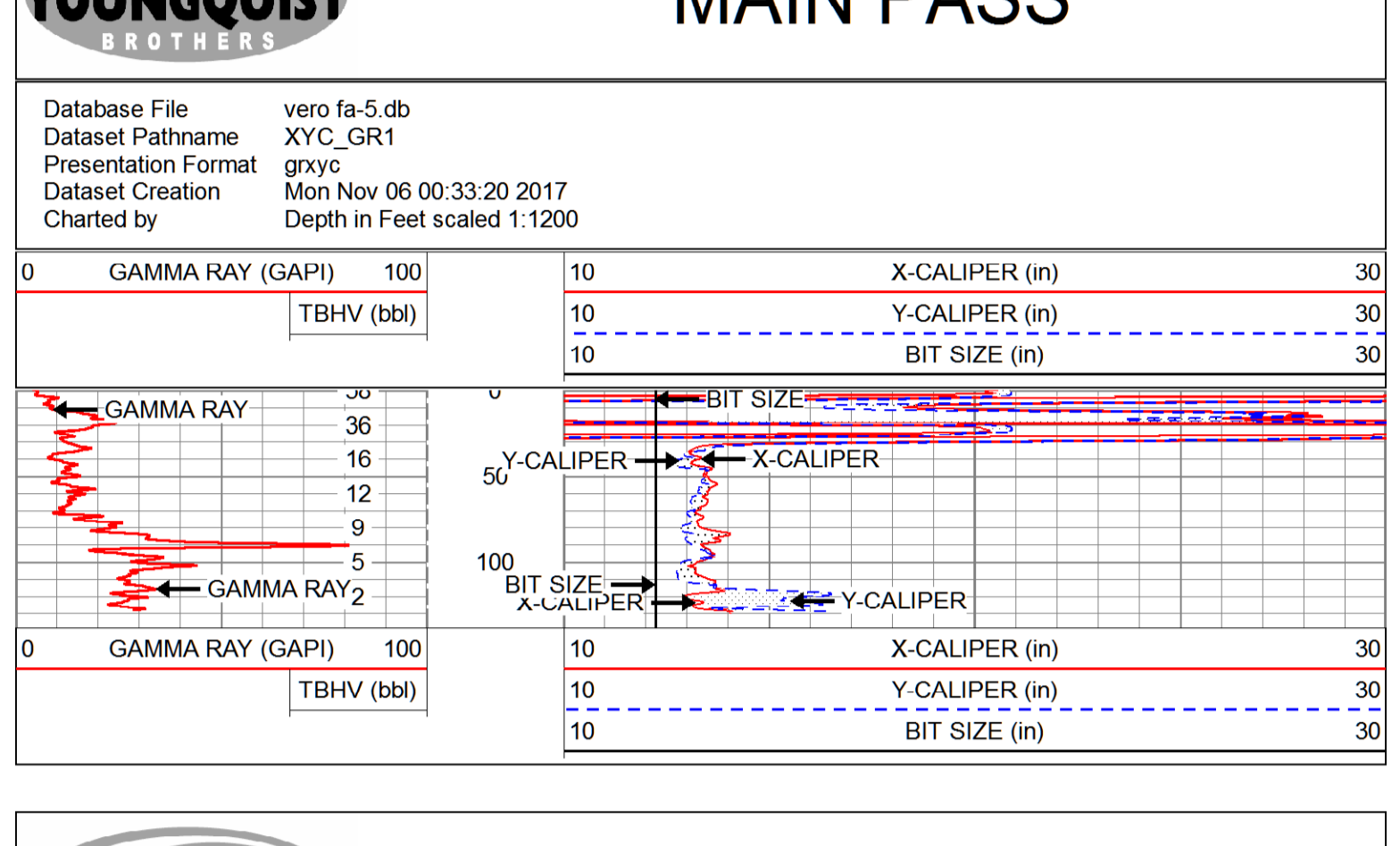
All interpretations are opinions based on inferences from electrical or other measurements and we cannot and do not guarantee the accuracy or correctness of any interpretation, and we shall not, except in the case of gross or willful negligence on our part, be liable or responsible for any loss, costs, damages, or expenses incurred or sustained by anyone resulting from any interpretation made by any of our officers, agents or employees. These interpretations are also subject to our general terms and conditions set out in our current Price Schedule.

Comments

CALIPER MAX ARM READING 41"

OTHER SERVICES

DUAL INDUCTION WITH SP



Calibration Report

Database File: vero fa-5.db
 Dataset Pathname: XYC_GR
 Dataset Creation: Mon Nov 06 00:18:00 2017

XY Caliper Calibration Report

Serial Number/Model: 46SM-XYCSM
 Performed: Mon Nov 06 00:10:44 2017

Ring	X Caliper	Y Caliper
1: 10 in	892.174 cps	932.717 cps
2: 20 in	1102.5 cps	1177.93 cps
3: 30 in	1364.11 cps	1456.65 cps
4: 40 in	1611.78 cps	1761.3 cps
5: 41 in	1612.72 cps	1794.13 cps
6: in	cps	cps
7: in	cps	cps
8: in	cps	cps
9: in	cps	cps
10: in	cps	cps

Gamma Ray Calibration Report

Serial Number: 13
 Tool Model: GROH
 Performed: Tue May 08 13:24:57 2012

Calibrator Value: 90.0 GAPI

Background Reading: 30.4 cps
 Calibrator Reading: 103.6 cps

Sensitivity: 1.2303 GAPI/cps

Sensor	Offset (ft)	Schematic	Description	Length (ft)	O.D. (in)	Weight (lb)
			CHD-StdCHD	1.00	1.69	10.00
GR	7.60		GR-GROH (13)	2.75	3.50	40.00
YCAL XCAL	3.50 3.50		XYC-XYCSM (46SM)	6.60	3.50	87.00

Dataset: vero fa-5.db: field/well/run1/XYC_GR
 Total length: 10.35 ft
 Total weight: 137.00 lb
 O.D.: 3.50 in



XY-CALIPER
GAMMA-RAY
LOG

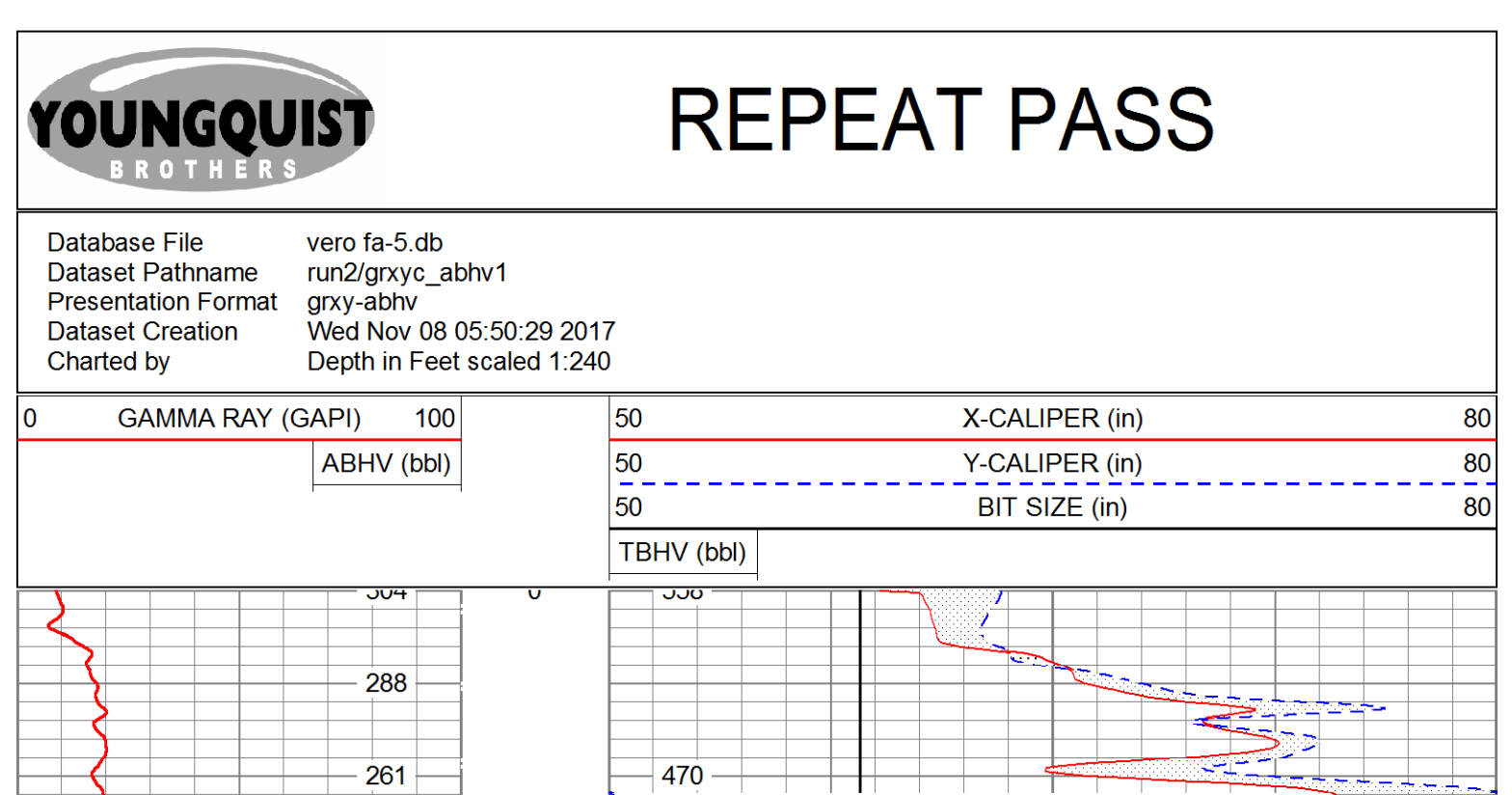
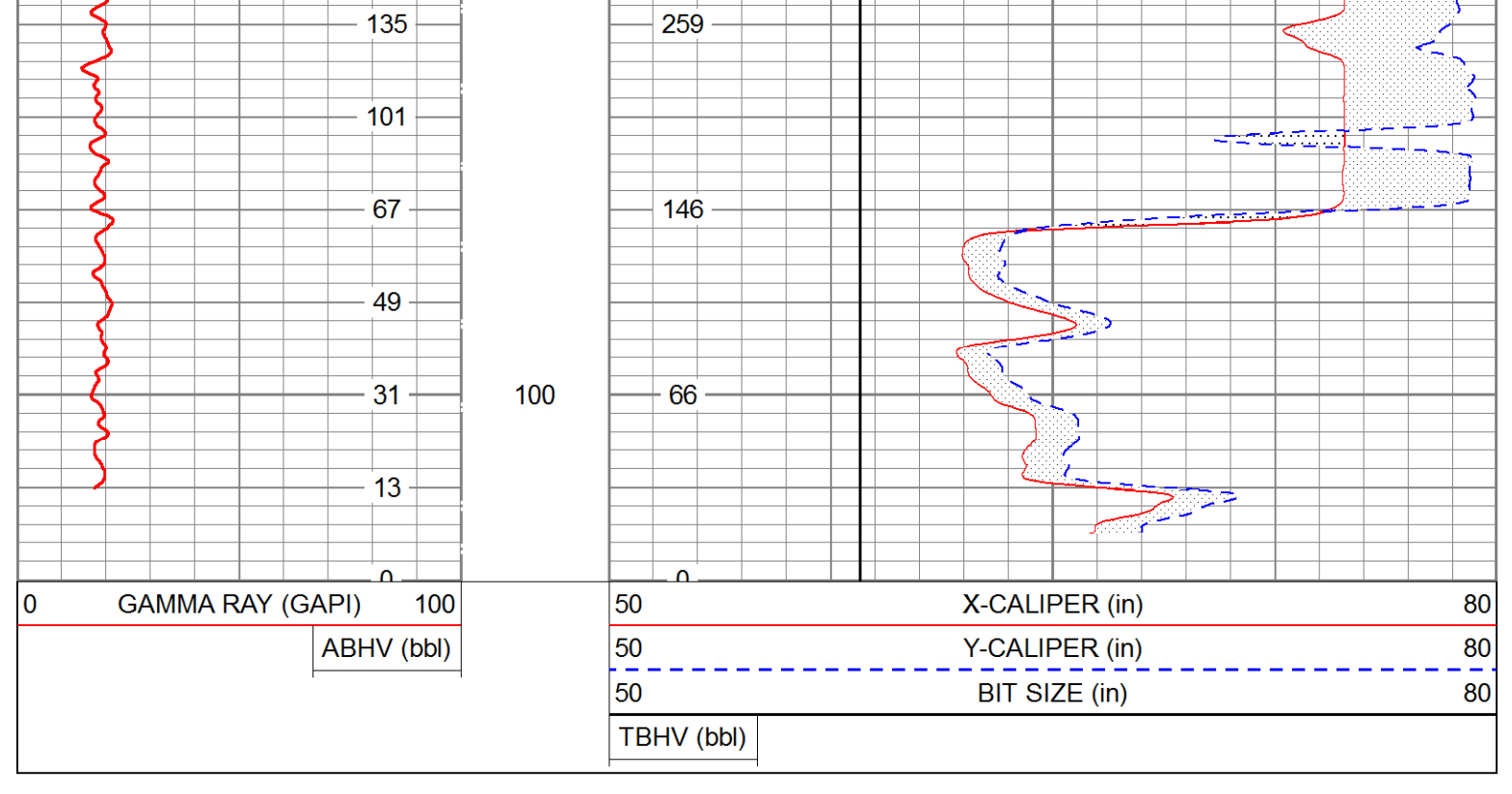
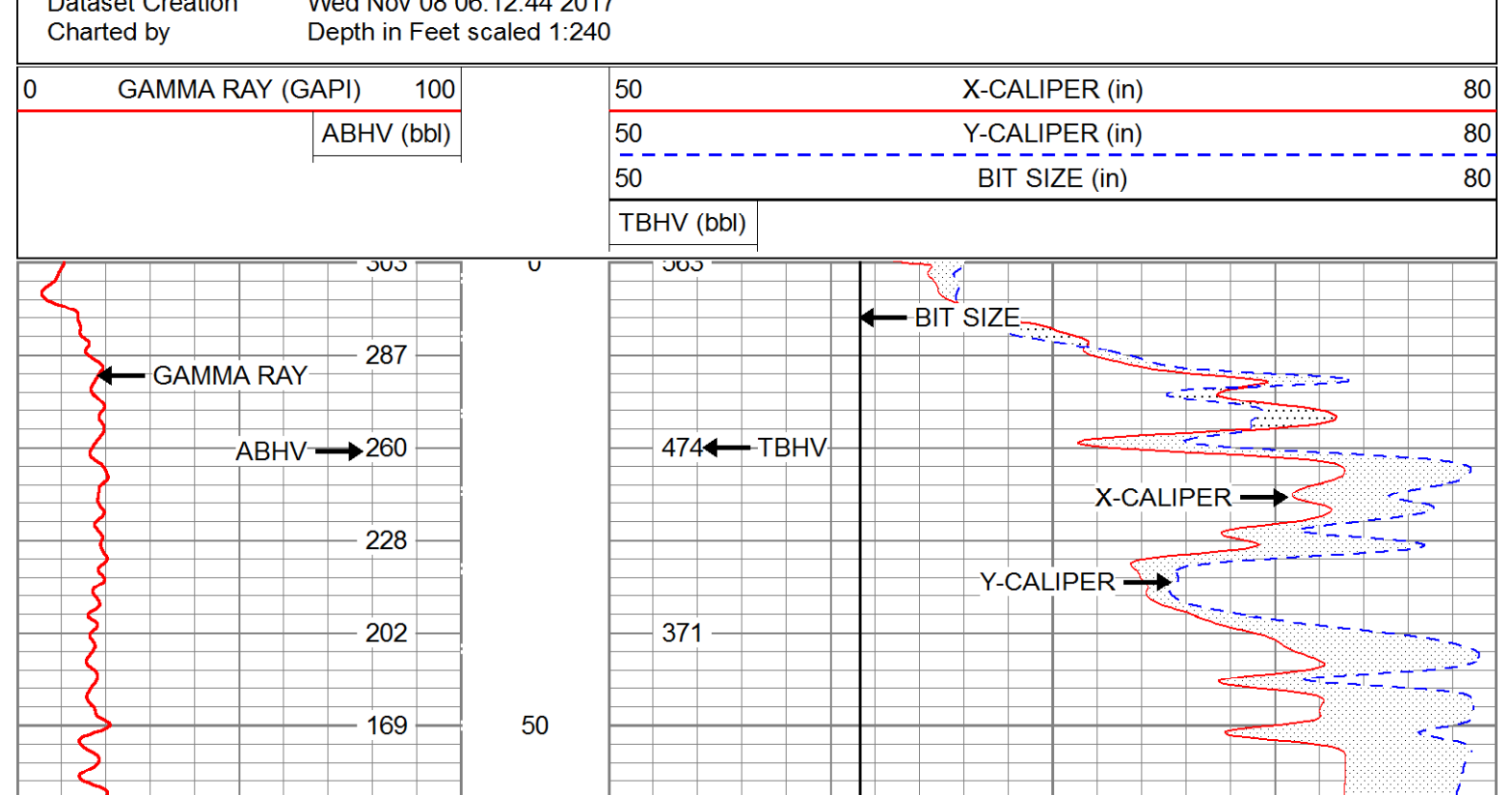
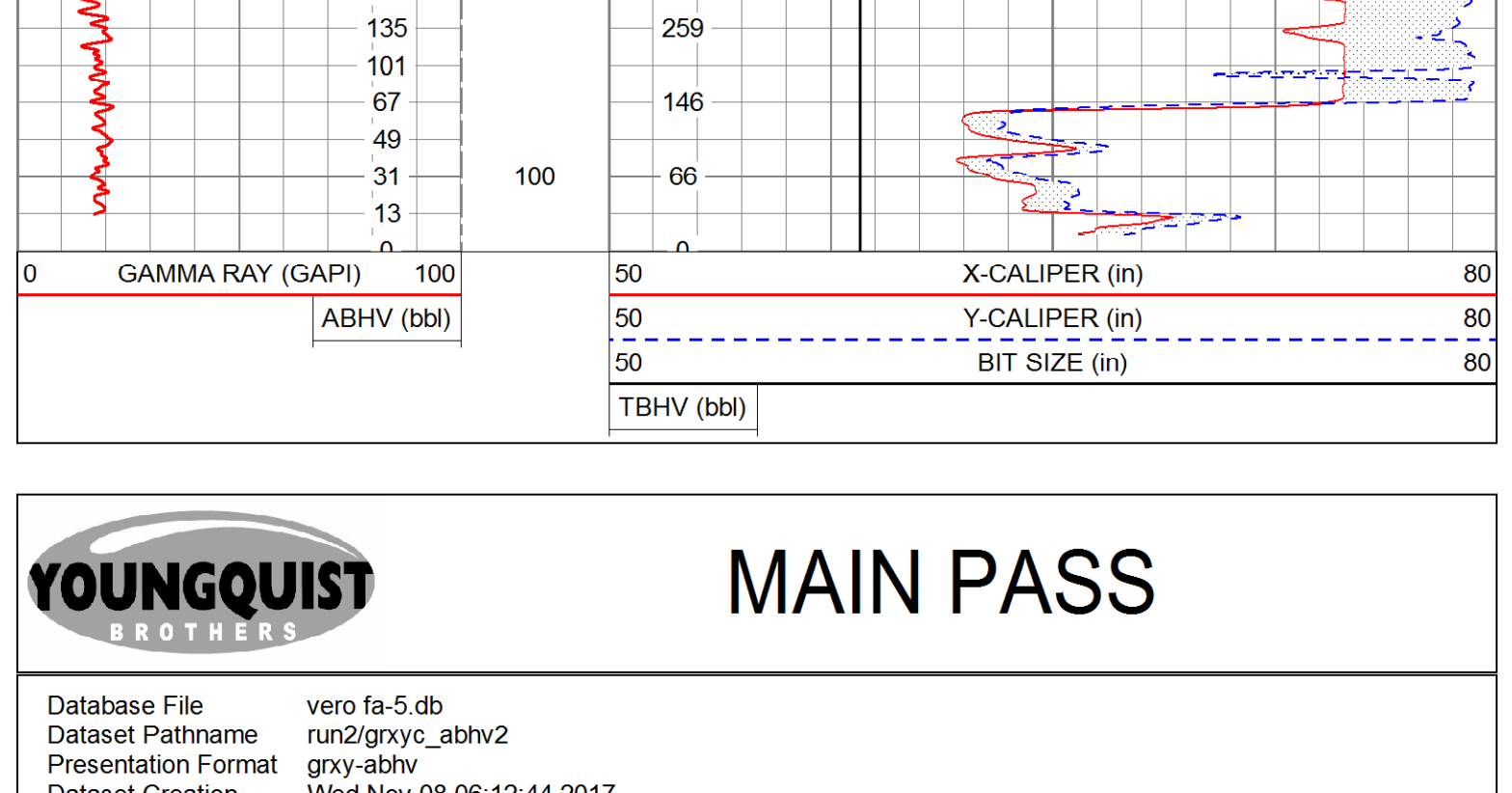
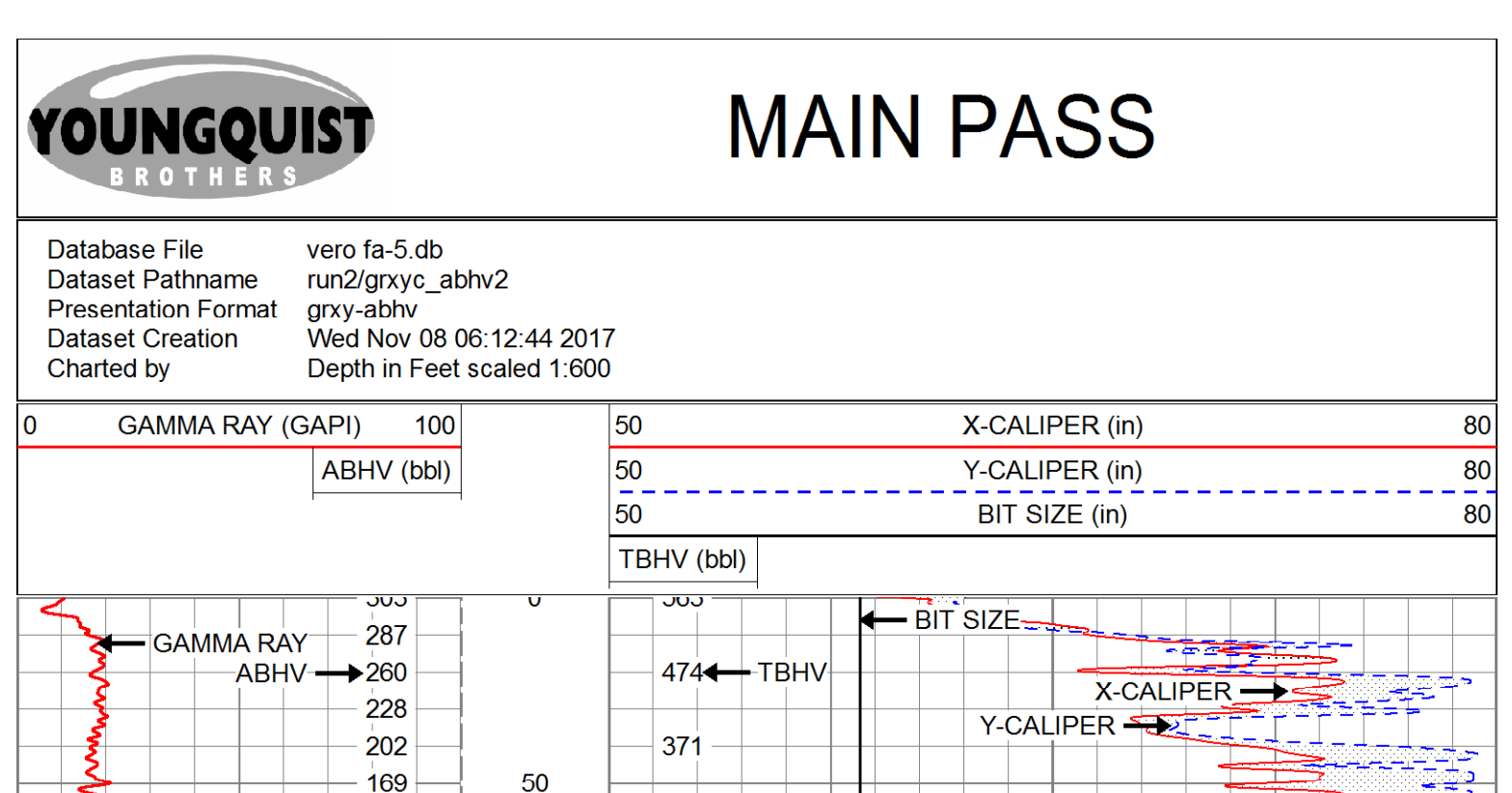
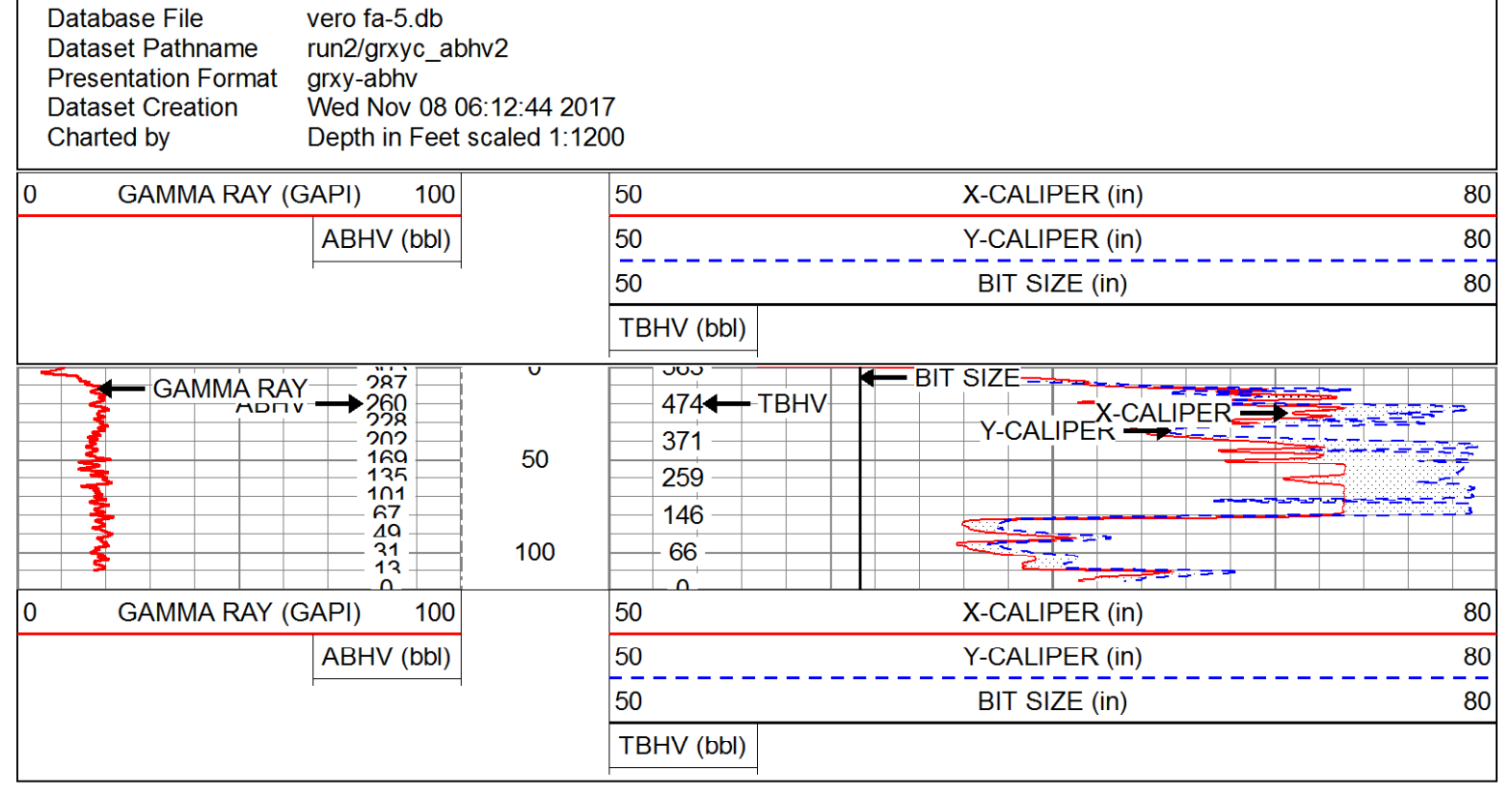
Company	FP&L	Well	FA-5
Field	OCEC	County	OKEECHOBEE
Location:	STATE ROAD 80 M.M. 5.5	State	FLORIDA
API #:		Other Services	SEE COMMENTS
Log Measured From	SEC TWP RGE	Elevation	K.B. D.F. G.L.
Drilling Measured From			
Date	NOVEMBER 8, 2017		
Run Number	TWO		
Depth	122'		
Bottom Logged Interval	120'		
Top Log Interval	SURFACE		
Open Hole Size	38.5"		
Type Fluid	MWD		
Density / Viscosity	8.9/7.5		
Max Recorded Temp.	NA		
Estimated Cement Top	NA		
Time Well Read Bottom	ON ARRIVAL		
Estimated Log Bottom	0645 HRS		
Location Number	104		
Recorded By	E. ANDERSON		
Witnessed By	C. SMITH		
Run Number	ONE	Run No.	136
Bit	12.25"	From	136'
TWO	50.5"	To	122'
Size		Waypoint	Top
Bottom			Bottom

<<< Fold Here >>>

All interpretations are opinions based on inferences from electrical or other measurements and we cannot and do not guarantee the accuracy or correctness of any interpretation, and we shall not, except in the case of gross or willful negligence on our part, be liable or responsible for any loss, costs, damages, or expenses incurred or sustained by anyone resulting from any interpretation made by any of our officers, agents or employees. These interpretations are also subject to our general terms and conditions set out in our current Price Schedule.

Comments

CALIPER MAX ARM READING 78"



Calibration Report

Database File: vero fa-5.db
Dataset Pathname: run2/grxyc_abhv2
Dataset Creation: Wed Nov 08 06:12:44 2017

XY Caliper Calibration Report

Serial Number/Model: 14XL-XYCLM
Performed: Wed Nov 08 05:45:30 2017

Ring	X Caliper	Y Caliper
1: 10 in	620 cps	589.622 cps
2: 20 in	785.081 cps	758.27 cps
3: 30 in	974.239 cps	933.804 cps
4: 40 in	1173.51 cps	1140.54 cps
5: 50 in	1378.49 cps	1363.35 cps
6: 60 in	1591.41 cps	1593.26 cps
7: 70 in	1832.22 cps	1821.73 cps
8: 74 in	1928.8 cps	1868.26 cps
9: in	cps	cps
10: in	cps	cps

Gamma Ray Calibration Report

Serial Number: 12
Tool Model: GROH
Performed: Mon Oct 09 07:45:49 2017

Calibrator Value: 69.0 GAPI

Background Reading: 32.2 cps
Calibrator Reading: 91.5 cps

Sensitivity: 1.1626 GAPI/cps

Sensor	Offset (ft)	Schematic	Description	Length (ft)	O.D. (in)	Weight (lb)
			CHD-StdCHD	1.00	1.69	10.00
GR	7.60		GR-GROH (12)	2.75	3.50	40.00
YCAL XCAL	0.50 0.50		XYCLM (14XL)	6.60	3.50	87.00

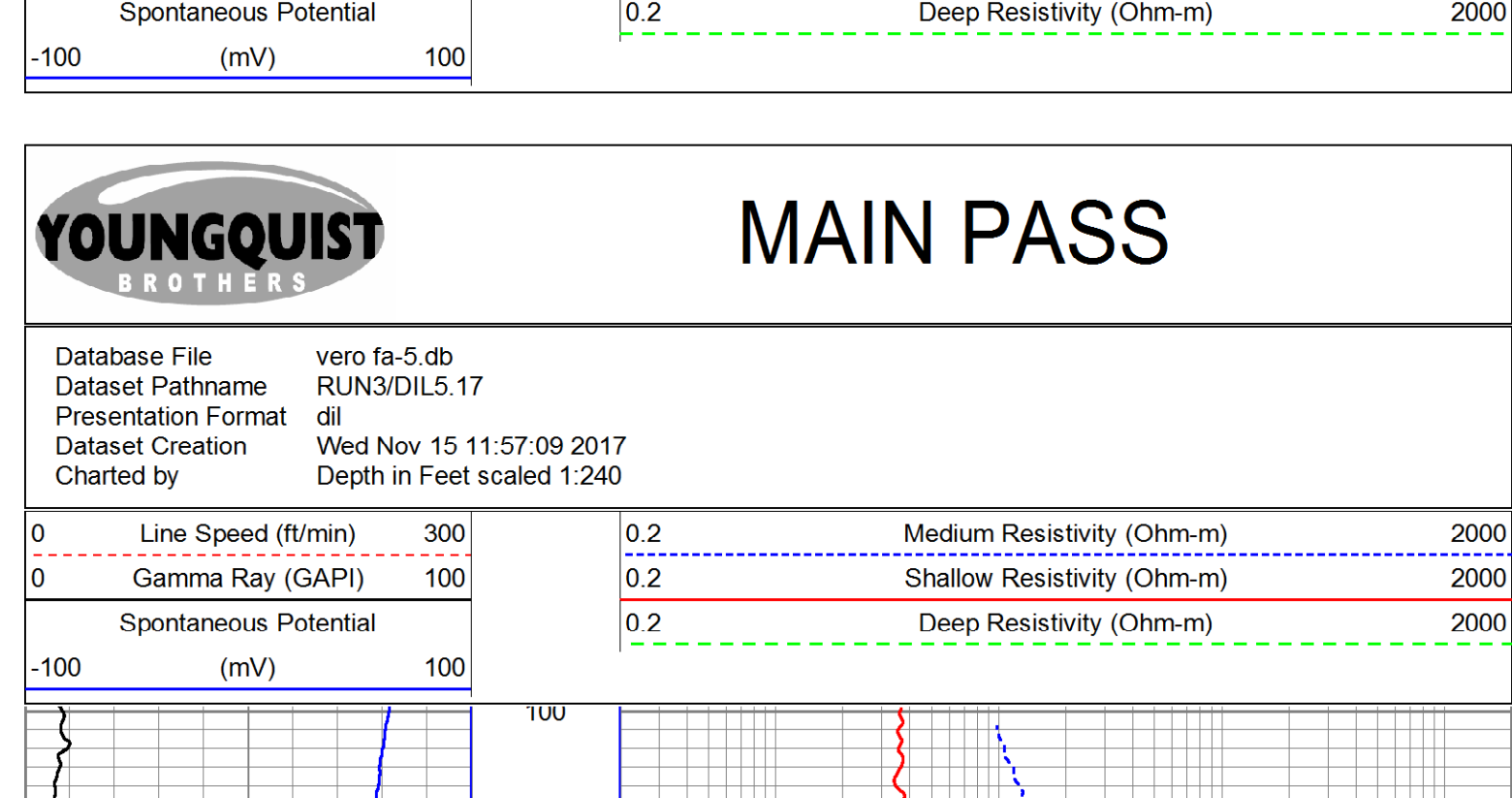
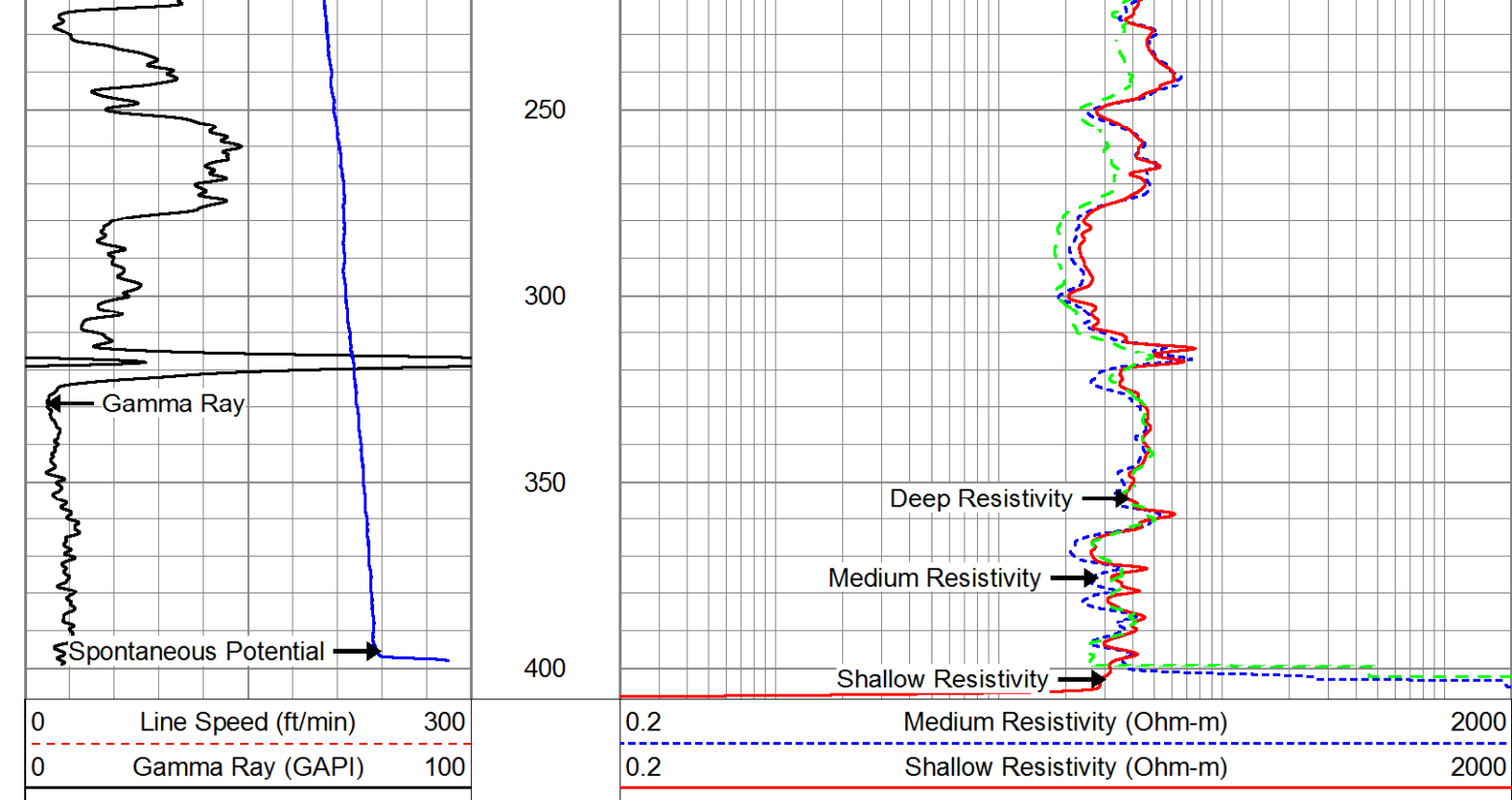
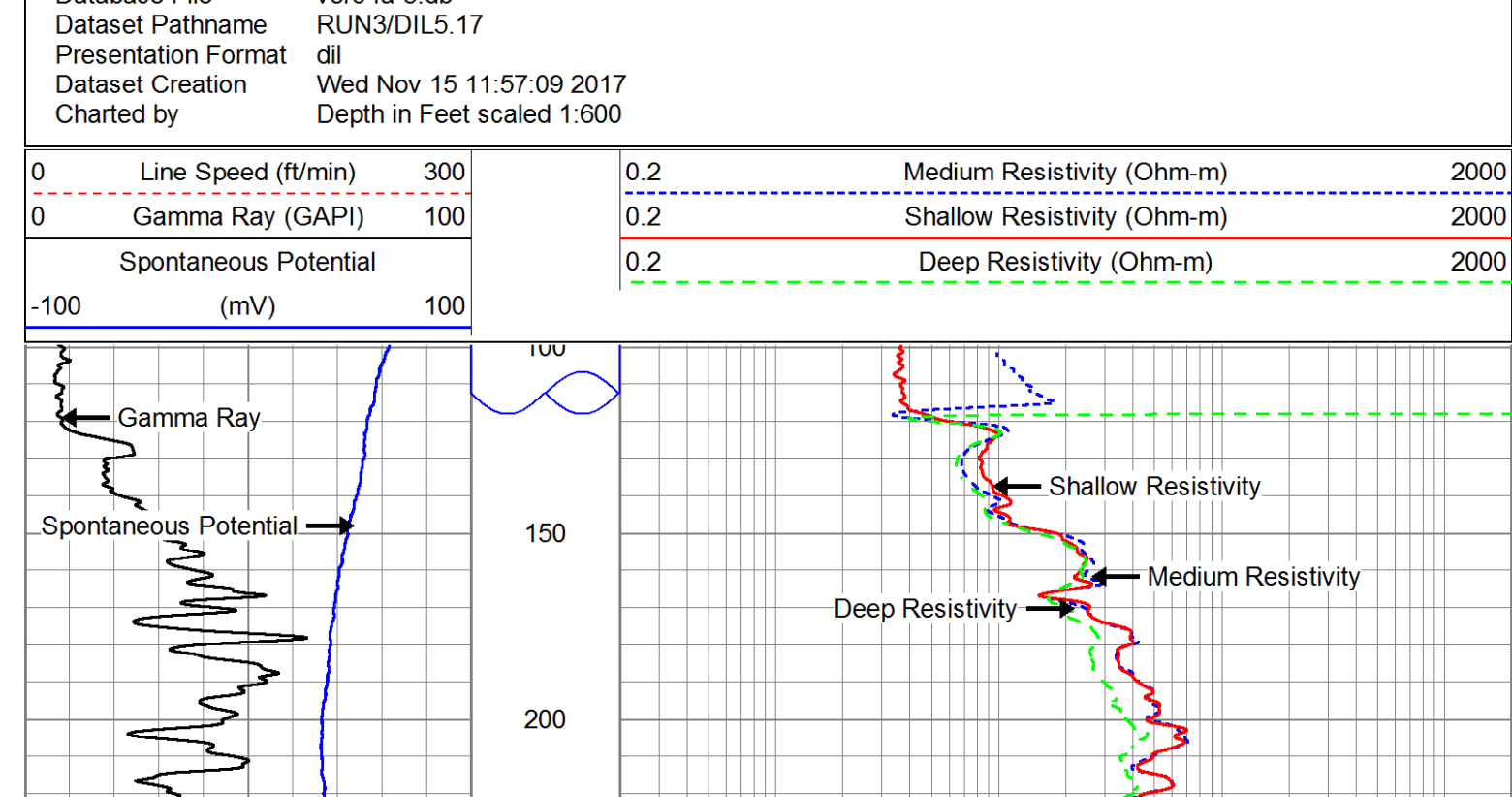
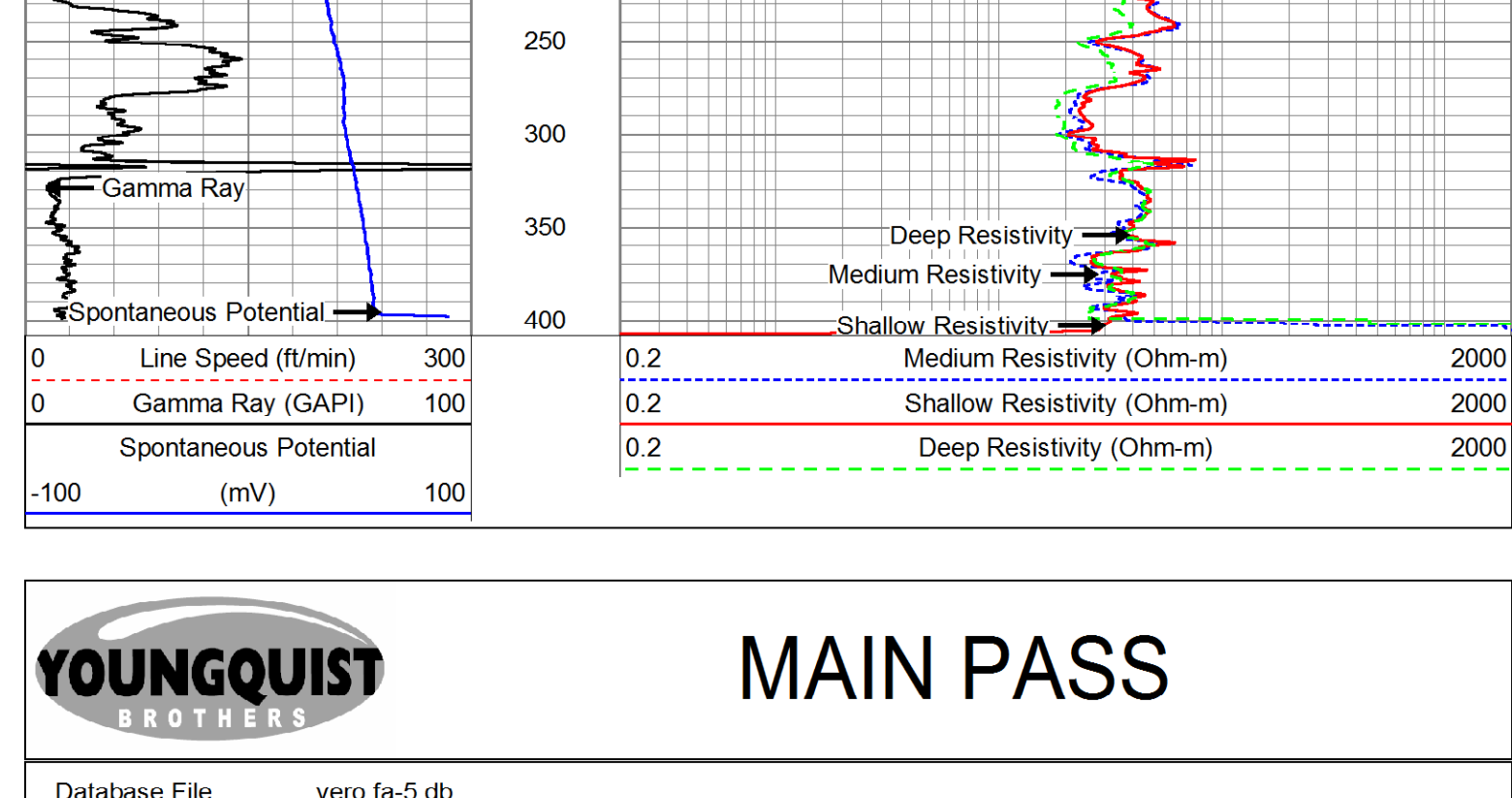
Dataset: vero fa-5.db: field/well/run2/grxyc_abhv2
Total length: 10.35 ft
Total weight: 137.00 lb
O.D.: 3.50 in

Company	FP&L	Well	FA-5	County	OKEECHOBEE	State	FLORIDA
Field	FA-5	Location	STATE ROAD 80 M.M. 313	SEC	T1M	RGE	
Field	OCEC	Permanent Datum	SEE COMMENTS	Dilling Measured From	NA	Elevation	
Company	FP&L	Date	11-15-2017	Log Number	THREE		
Well	FA-5	Depth	405'	Bottom Logger	405'		
Field	OCEC	Top Log Interval	100'	Open Hole Size	14.25"		
County	OKEECHOBEE	Bottom Logged Interval	100'	Density / viscosity	8.37/5		
State	FLORIDA	Estimated Cement Top	NA	Max. Recorded Temp.	NA		
Location	STATE ROAD 80 M.M. 313	Time Last Read	04/19/15	Line	ON		
SEC	T1M	Recorded By	R. CAULFIELD	Run Number	12.29		
RGE		Recorded By	FT MYERS	Bit	136"		
Elevation		Washed By	R. CAULFIELD	From	136"		
SEE COMMENTS				Spontaneous Potential	10		
				From	10		
				Line	ON		
				Run Number	12.29		
				Bit	136"		
				From	136"		
				Spontaneous Potential	10		
				From	10		
				Line	ON		
				Run Number	12.29		
				Bit	136"		
				From	136"		
				Spontaneous Potential	10		
				From	10		
				Line	ON		
				Run Number	12.29		
				Bit	136"		
				From	136"		
				Spontaneous Potential	10		
				From	10		
				Line	ON		
				Run Number	12.29		
				Bit	136"		
				From	136"		
				Spontaneous Potential	10		
				From	10		

All interpretations are opinions based on inferences from electrical or other measurements and we cannot and do not guarantee the accuracy or correctness of any interpretation, and we shall not, except in the case of gross or willful negligence on our part, be liable or responsible for any loss, costs, damages, or expenses incurred or sustained by anyone resulting from any interpretation made by any of our officers, agents or employees. These interpretations are also subject to our general terms and conditions set out in our current Price Schedule.

Comments

OTHER SERVICES=
XY CALIPER WITH GAMMA RAY



Calibration Report

Database File: vero fa-5.db
Dataset Pathname: RUN3/DIL5.17
Dataset Creation: Wed Nov 15 11:57:09 2017

Dual Induction Calibration Report

Serial Model: 27-GEAR
Surface Cal Performed: Wed Oct 04 13:22:25 2017
Downhole Cal Performed: Wed Nov 15 09:57:29 2017
After Survey Verification Performed: Wed Nov 15 09:57:29 2017

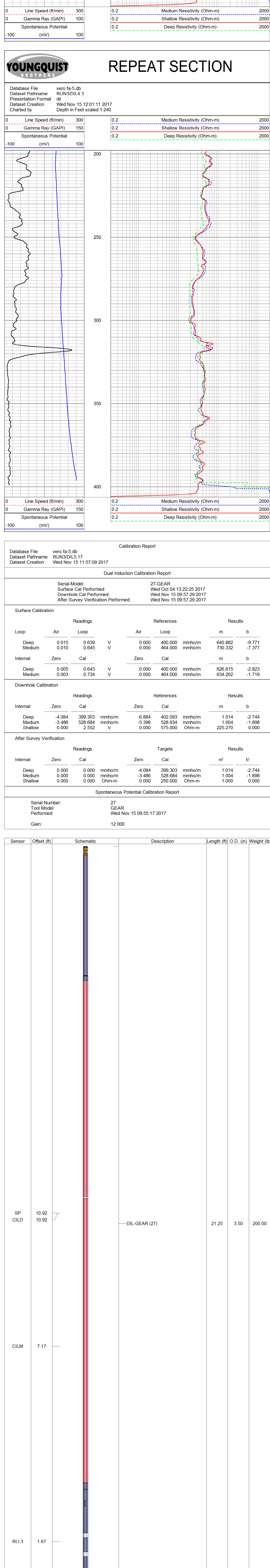
Surface Calibration									
Loop:	Readings			V	References			Results	
	Air	Loop			Air	Loop	m	b	
Deep	0.015	0.639		0.000	400.000	mmho/m	640.882	-9.771	
Medium	0.010	0.645		0.000		mmho/m	730.332	-7.377	
Internal:	Zero				Cal			m	
Deep	0.005	0.643	V	0.000	400.000	mmho/m	626.815	-2.823	
Medium	0.003	0.734	V	0.000	464.000	mmho/m	634.202	-1.719	

Downhole Calibration									
Internal:	Readings			V	References			Results	
	Zero	Cal			Zero	Cal	m	b	
Deep	-4.084	399.303	mmho/m	-6.884	402.093	mmho/m	1.014	-2.744	
Medium	-3.486	528.684	mmho/m	-5.398	528.934	mmho/m	1.004	-1.898	
Shallow	0.000	2.552	V	0.000	575.000	Ohm-m	225.270	0.000	

After Survey Verification									
Internal:	Readings			V	Targets			Results	
	Zero	Cal			Zero	Cal	m'	b'	
Deep	0.000	0.000	mmho/m	-4.084	399.303	mmho/m	1.014	-2.744	
Medium	0.000	0.000	mmho/m	-3.486	528.684	mmho/m	1.004	-1.898	
Shallow	0.000	0.000	Ohm-m	0.000	250.000	Ohm-m	1.000	0.000	

Spontaneous Potential Calibration Report

Serial Number: 27
Tool Model: GEAR
Performed: Wed Nov 15 09:55:17 2017
Gain: 12.000





XY-CALIPER
GAMMA-RAY
LOG

Company	FP&L	Well	FA-5	Field	OCEC	County	OKEECHOBEE	State	FLORIDA
Location:	STATE ROAD 60 M.M. 5.5		AP#:						
SEC	TWP	RGE	Elevation	Other Services SEE COMMENTS					
Date	NOVEMBER 20, 2017	Run Number	FOUR	Log Measured From	Permanent Datum				
Depth Driller	363	Bottom Logger	364	Bottom Logged Interval	SURFACE				
Open Hole Size	46.5"	Type Fluid	MUD	Denisty / Viscosity	NA				
Max. Recorded Temp.	NA	Estimated Cement Top	NA	Time Well Head on Bottom	ON ARRIVAL				
Location Number	0445 HRS	Location	J DIXON	Recorded By	R PIERSON				
Missessed By	R MILLER								
Run Number	12.25"	Bit	135'	Run No	From	Bit	From	To	
ONE	50.5"	0	122'						
TWO	12.25"	124'	404'						
THREE	46.5"	118'	364'						
FOUR	48"	5							
Casing Record									
Surface String									
Production String									

<<< Fold Here >>>

All interpretations are opinions based on inferences from electrical or other measurements and we cannot and do not guarantee the accuracy or correctness of any interpretation, and we shall not, except in the case of gross or willful negligence on our part, be liable or responsible for any loss, costs, damages, or expenses incurred or sustained by anyone resulting from any interpretation made by any of our officers, agents or employees. These interpretations are also subject to our general terms and conditions set out in our current Price Schedule.

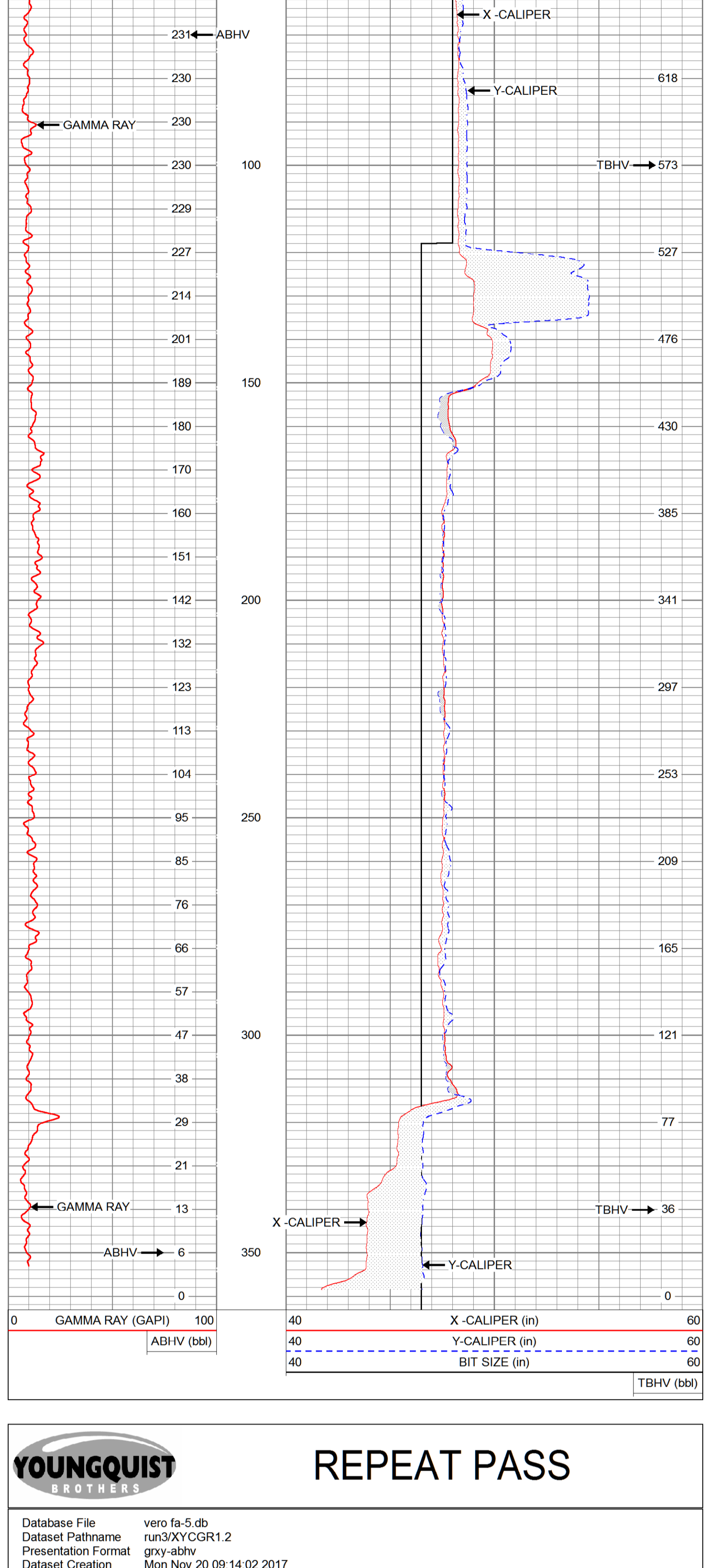
Comments

CALIPER MAX ARM READING 61"

CEMENT VOLUME FIGURED ON 36" CASING

MAIN PASS

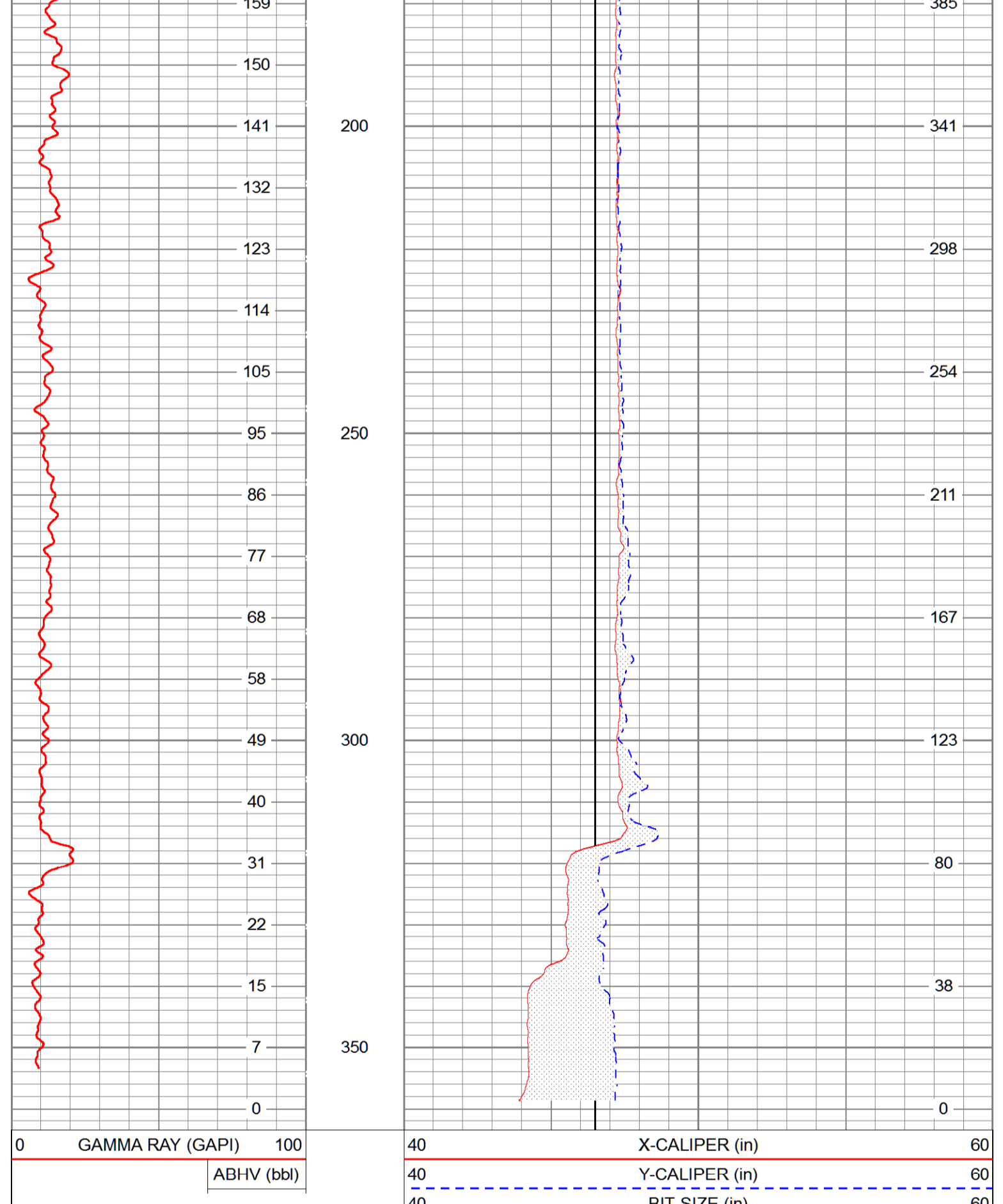
Database File	vero fa-5.db
Dataset Pathname	run3/XYCGR2.4
Presentation Format	grxy-abv
Dataset Creation	Mon Nov 20 09:09:11 2017
Charted by	Depth in Feet scaled 1:240



0	GAMMA RAY (GAPI)	100	40	X-CALIPER (in)	60
	ABHV (bbl)		40	Y-CALIPER (in)	60
			40	BIT SIZE (in)	60
					TBHV (bbl)

REPEAT PASS

Database File	vero fa-5.db
Dataset Pathname	run3/XYCGR1.2
Presentation Format	grxy-abv
Dataset Creation	Mon Nov 20 09:14:02 2017
Charted by	Depth in Feet scaled 1:240



0	GAMMA RAY (GAPI)	100	40	X-CALIPER (in)	60
	ABHV (bbl)		40	Y-CALIPER (in)	60
			40	BIT SIZE (in)	60
					TBHV (bbl)

Calibration Report

Database File	vero fa-5.db
Dataset Pathname	run3/XYCGR2.3
Dataset Creation	Mon Nov 20 05:55:09 2017

XY Caliper Calibration Report

Serial Number/Model:	46LM-XYCLM	
Performed:	Mon Nov 20 04:39:53 2017	
Ring	X Caliper	Y Caliper
1: 10 in	856.649 cps	900.216 cps
2: 20 in	984 cps	1033.3 cps
3: 30 in	1121.63 cps	1181.85 cps
4: 40 in	1267.07 cps	1338.15 cps
5: 50 in	1422.61 cps	1508.59 cps
6: in	cps	cps
7: in	cps	cps
8: in	cps	cps
9: in	cps	cps
10: in	cps	cps

Gamma Ray Calibration Report

Serial Number:	13
Tool Model:	GROH
Performed:	Tue May 08 13:24:57 2012
Calibrator Value:	90.0 GAPI
Background Reading:	30.4 cps
Calibrator Reading:	103.6 cps
Sensitivity:	1.2303 GAPI/cps

Sensor	Offset (ft)	Schematic	Description	Length (ft)	O.D. (in)	Weight (lb)
			CHD-StdCHD	1.00	1.69	10.00
GR	7.60		GR-GROH (13)	2.75	3.50	40.00
YCAL XCAL	0.50 0.50		XYC-XYCLM (46LM)	6.60	3.50	87.00

Dataset: vero fa-5.db; field/well/run3/XYCGR2.3
 Total length: 10.35 ft
 Total weight: 137.00 lb
 O.D.: 3.50 in



FLUID CONDUCTIVITY/ TEMPERATURE

Company	FP&L	Well	FA-5	Field	OCEC	County	OKEECHOBEE	State	FLORIDA
Location:	STATE ROAD 80 M.M. 5.5			AP#:					
SEC	TWP	RGE	Elevation	Other Services	SEE COMMENTS				
Permanent Datum	Log Measured From	Drilling Measured From	Elevation	K/B	D.F. G.L.				
Date	DECEMBER 01, 2017								
Run Number	FIVE	Depth Driller	811	Bottom Logger	813	Bottom Logged Interval	SURFACE	Top Log Interval	14.75'
Open Hole Size	14.75'	Type Fluid	WATER	Density / Viscosity	NA	Estimated Cement top	NA	Max Recorded temp.	22.70
Time Well Read on Bottom	22:30	Estimated Cement top	NA	Time Well Read on Bottom	22:30	Estimated Cement top	NA	Time Well Read on Bottom	22:30
Location Number	407	Location	J. DIXON	Recorded By	R. PIERSON	Missessed By	R. MILLER		
Run Number	ONE	Run Number	TWO	Run Number	THREE	Run Number	FOUR		
Bit	12.25"	From	0'	To	135'	From	0'	To	14.75'
Bit	12.25"	From	0'	To	122'	From	0'	To	364'
Bit	12.25"	From	0'	To	404'	From	0'	To	811'
Bit	12.25"	From	0'	To	465'	From	0'	To	118'
Surface String	48'	Surface String	38'	Surface String	118'	Surface String	118'	Surface String	118'
Production String	3'	Production String	0'	Production String	0'	Production String	0'	Production String	0'

<<< Fold Here >>>

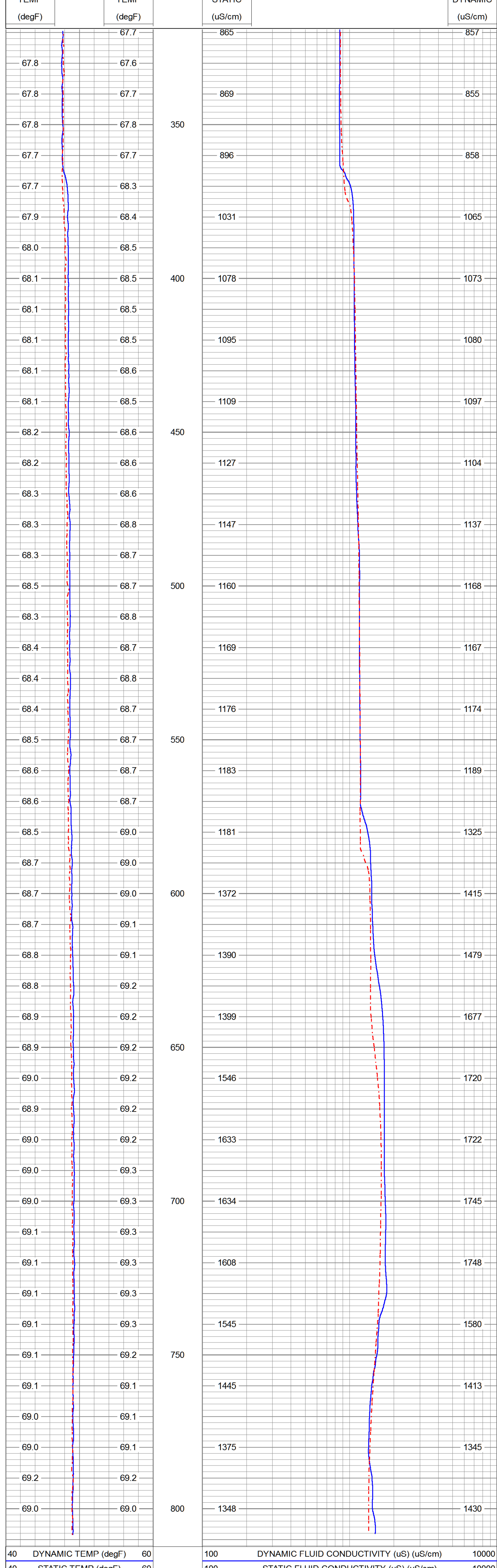
All interpretations are opinions based on inferences from electrical or other measurements and we cannot and do not guarantee the accuracy or correctness of any interpretation, and we shall not, except in the case of gross or willful negligence on our part, be liable or responsible for any loss, costs, damages, or expenses incurred or sustained by anyone resulting from any interpretation made by any of our officers, agents or employees. These interpretations are also subject to our general terms and conditions set out in our current Price Schedule.

Comments

OTHER SERVICES:
XY CALIPER W/ GAMMA RAY
DUAL INDUCTION W/ SP
FLOW



Database File: vero fa-5.db
 Dataset Pathname: run5/XYC_GR22.1
 Presentation Format: fcond_mg
 Dataset Creation: Sat Dec 02 03:30:31 2017
 Charted by: Depth in Feet scaled 1:240



40	DYNAMIC TEMP (degF)	60	100	DYNAMIC FLUID CONDUCTIVITY (uS) (uS/cm)	10000
40	STATIC TEMP (degF)	60	100	STATIC FLUID CONDUCTIVITY (uS) (uS/cm)	10000
STATIC TEMP (degF)	DYNAMIC TEMP (degF)	F_COND STATIC (uS/cm)	F_COND DYNAMIC (uS/cm)		

Sensor	Offset (ft)	Schematic	Description	Length (ft)	O.D. (in)	Weight (lb)
			BARS-1.68	5.00	1.68	50.00
			CENT-8FTC	8.00	1.69	70.00
ACCZ	3.92					
ACCX	3.92					
F_COND	2.92		FCOND-Probe (FW1603-001) Fluid Conductivity Tool	5.83	1.69	50.00
TEMP	1.50					
FDIR	0.29					
FRATE	0.29					

Dataset: vero fa-5.db: field/well/run5/XYC_GR22.1
 Total length: 18.83 ft
 Total weight: 170.00 lb
 O.D.: 1.69 in

Company	FP&L	Well	FA-5	Field	OCEC	County	OKEECHOBEE	State	FLORIDA
Location:	STATE ROAD 80		M.M. 53		Other Services SEE COMMENTS				
API #:									
SEC	TWP	RGE	Elevation		Permanent Datum				
Log Measured From			Elevation		K.B. D.F. S.L.				
Drilling Measured From			Elevation		D.F. S.L.				
Date	DECEMBER 01, 2017								
Run Number	117								
Depth	813'								
Bottom Logged Interval	SURFACE								
Top Log Interval	SURFACE								
Open Hole Size	N/A								
Density/Viscosity	N/A								
Max. Recorded Temp.	N/A								
Estimated Cement Top	2210								
Time Valve Read Bottom	4:22:10								
Location	F1 MEVENS		R1 PIERSON		Borehole Record				
Equipment Number	107		107		10				
Recorded By	J. DIXON		R. MILLER		10				
Run Number	12.25'	0'	135'	0'	135'	0'	14.75'	364'	811'
ONE	12.25'	0'	135'	0'	135'	0'	14.75'	364'	811'
TWO	130.5'	124'	4.22'	0'	130.5'	124'	4.22'	0'	130.5'
THREE	130.5'	124'	4.22'	0'	130.5'	124'	4.22'	0'	130.5'
FOUR	46.85'	118'	364'	0'	46.85'	118'	364'	0'	46.85'
CASTING RECORD	46.85'		118'		WQ/UF		1.0g		Bottom
SIZE	46.85'		118'		WQ/UF		1.0g		Bottom
PRODUCTION STRING	38"		5"		WQ/UF		1.0g		Bottom
LIENER	38"		5"		WQ/UF		1.0g		Bottom

All interpretations are opinions based on inferences from electrical or other measurements and we cannot and do not guarantee the accuracy or correctness of any interpretation, and we shall not, except in the case of gross or willful negligence on our part, be liable or responsible for any loss, costs, damages, or expenses incurred or sustained by anyone resulting from any interpretation made by any of our officers, agents or employees. These interpretations are also subject to our general terms and conditions set out in our current Price Schedule.

Comments

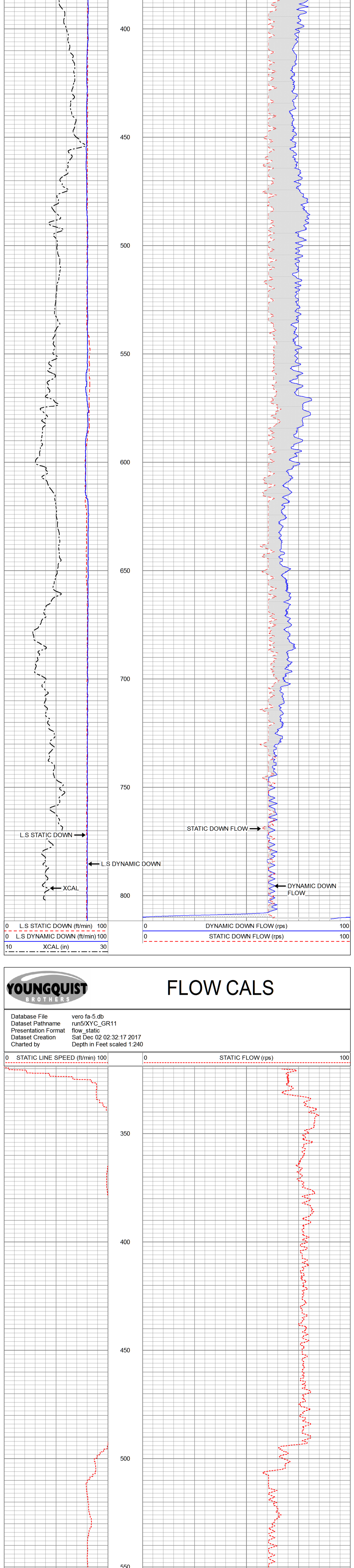
OTHER SERVICES:

XY CALIPER W/ GAMMA RAY
DUAL INDUCTION W/ SP
FLUID CONDUCTIVITY/TEMPERATURE

DYNAMIC FLOW RATE 492 GPM

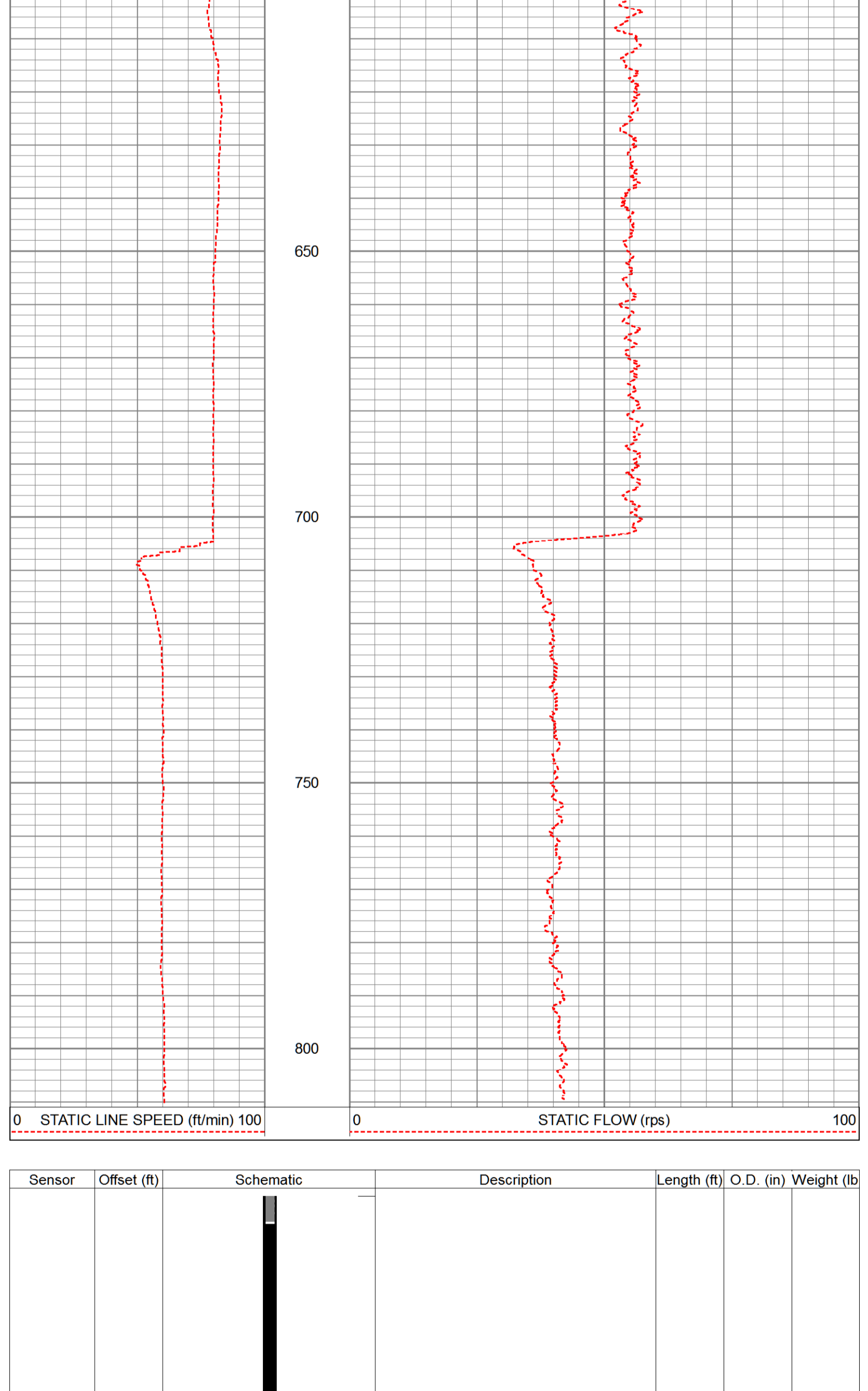
MERGED FLOW

Database File: vero fa-5.db
 Dataset Pathname: run5/XYC_GR22
 Presentation Format: flow_merge_down
 Dataset Creation: Sat Dec 02 03:23:35 2017
 Charted by: Depth in Feet scaled 1:240



FLOW CALS

Database File: vero fa-5.db
 Dataset Pathname: run5/XYC_GR11
 Presentation Format: flow_static
 Dataset Creation: Sat Dec 02 02:32:17 2017
 Charted by: Depth in Feet scaled 1:240



Sensor	Offset (ft)	Schematic	Description	Length (ft)	O.D. (in)	Weight (lb)
			BARS-1.68	5.00	1.68	50.00
			CENT-8FTC	8.00	1.69	70.00
ACCZ	3.92					
ACCY	3.92					
ACCX	3.92					
F_COND	2.92		FCOIND-Prrobe (FW1603-001) Fluid Conductivity Tool	5.83	1.69	50.00
TEMP	1.50					
FDIR	0.29					
FRATE	0.29					

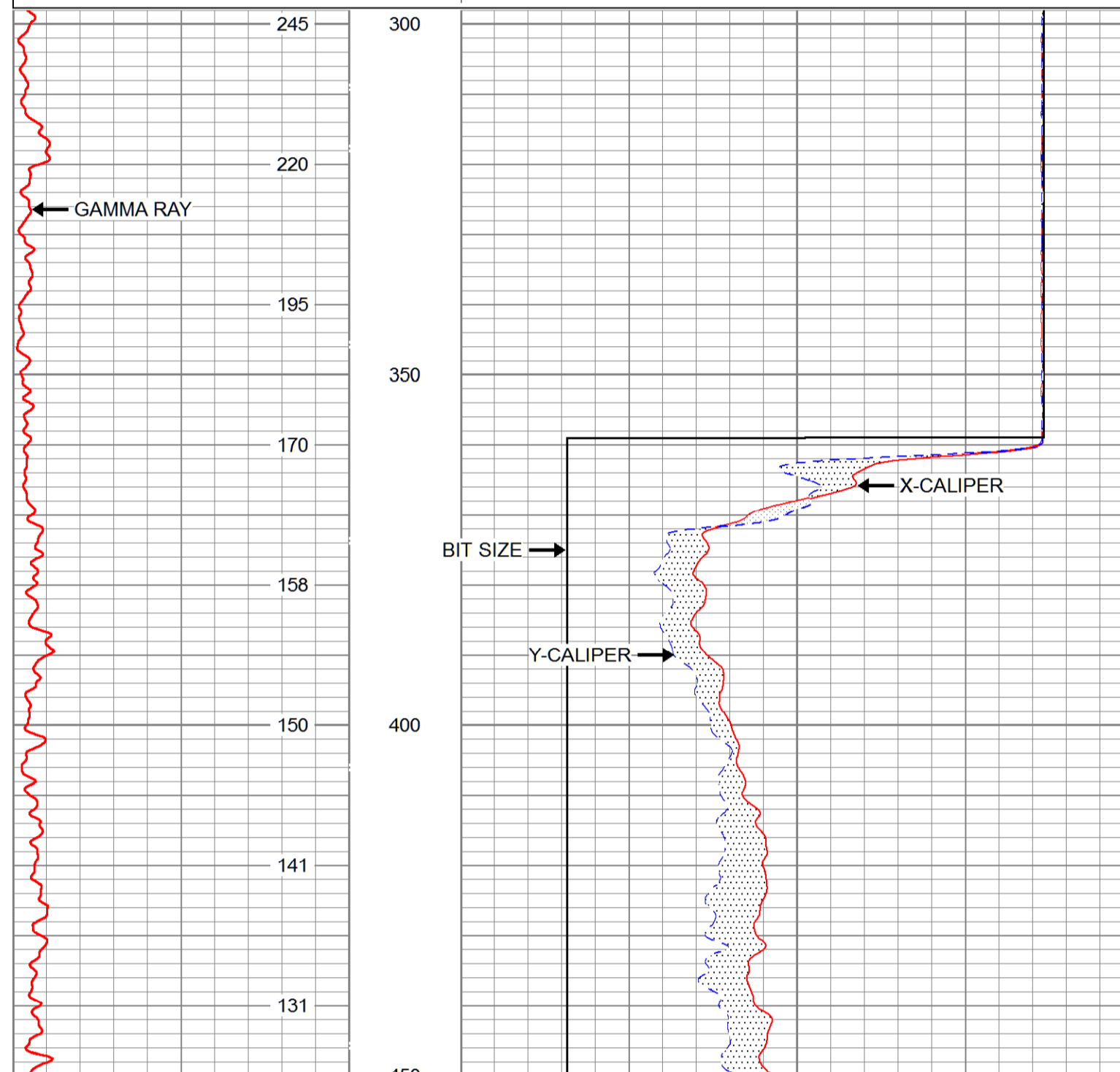
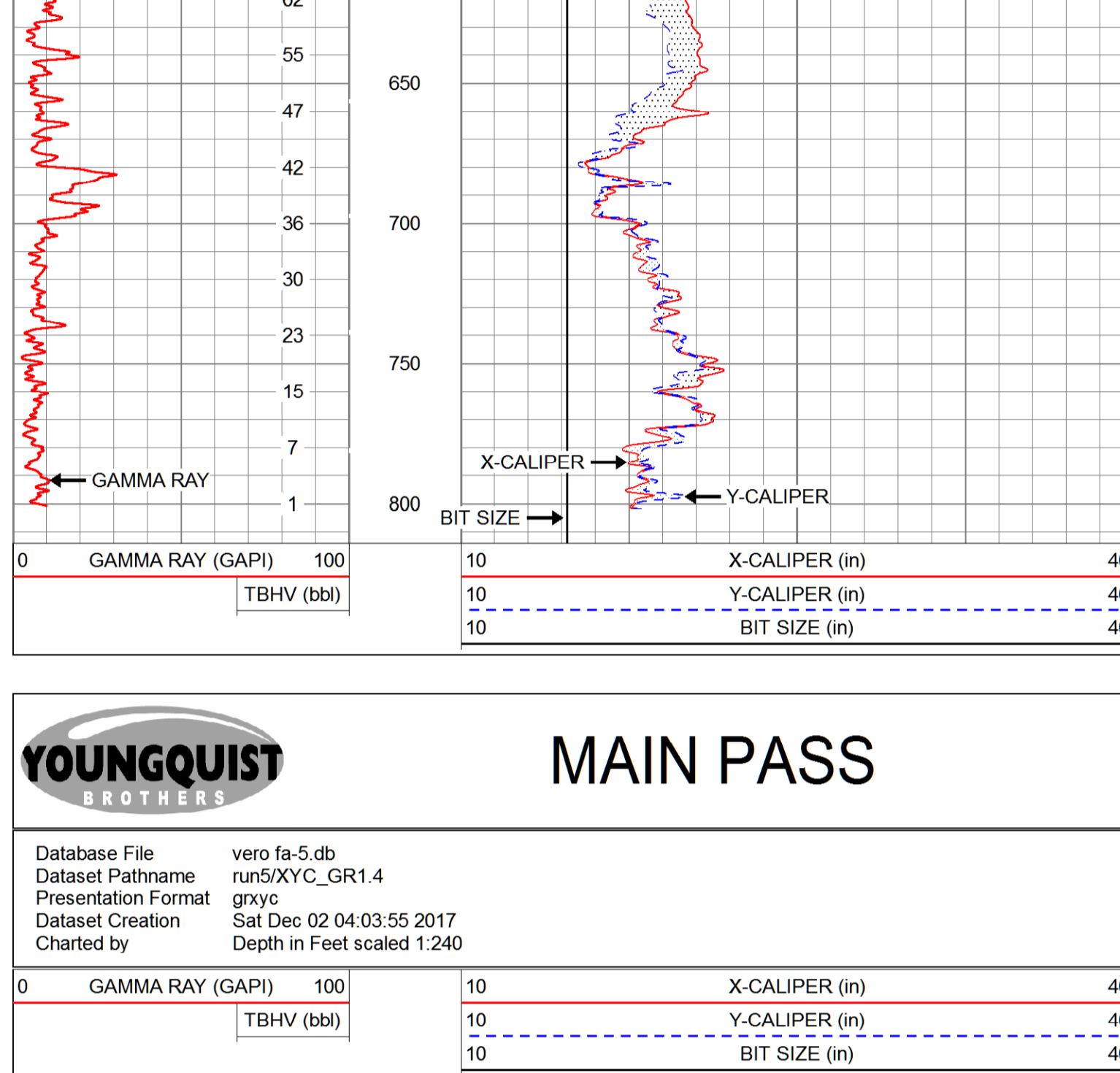
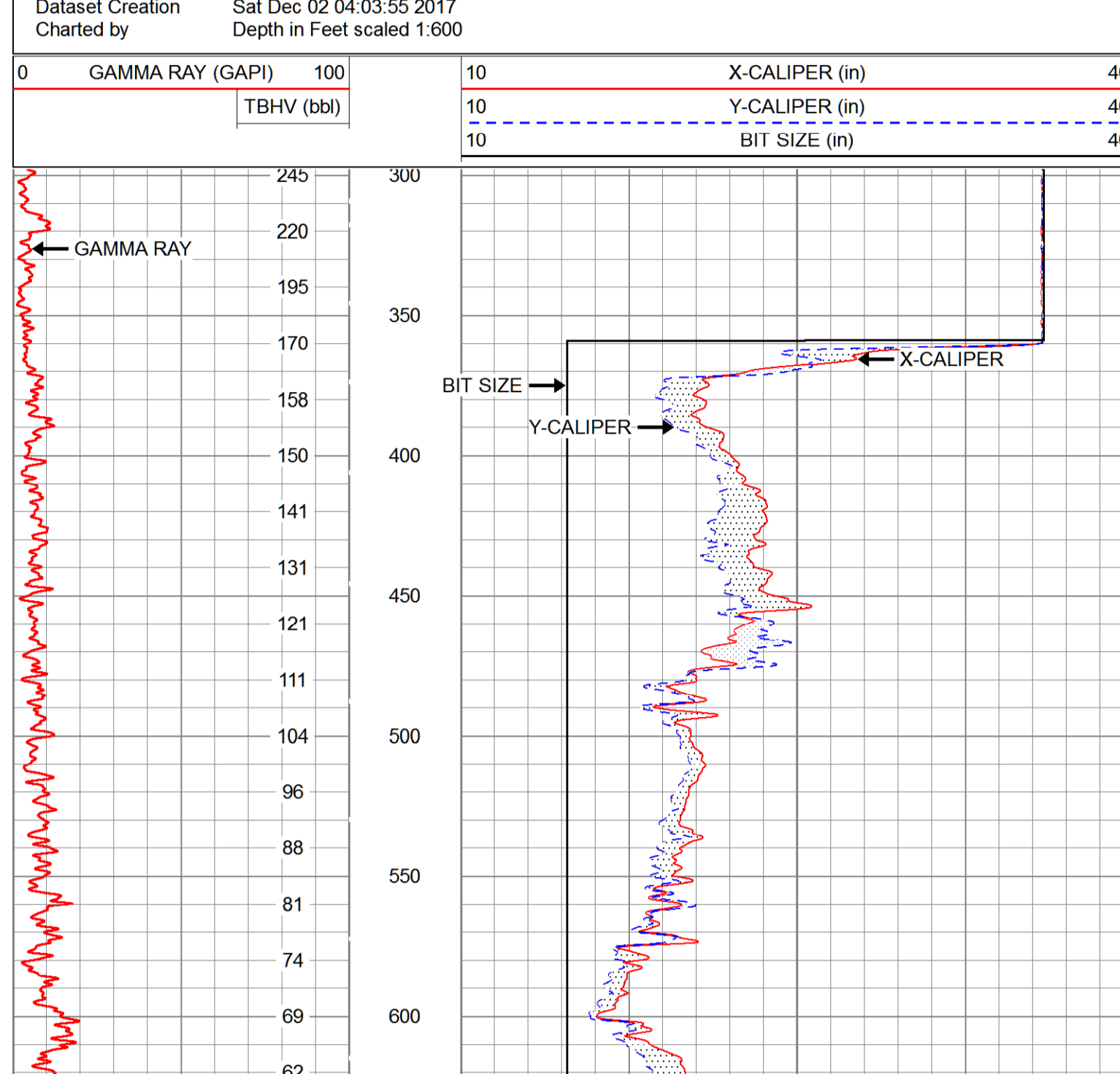
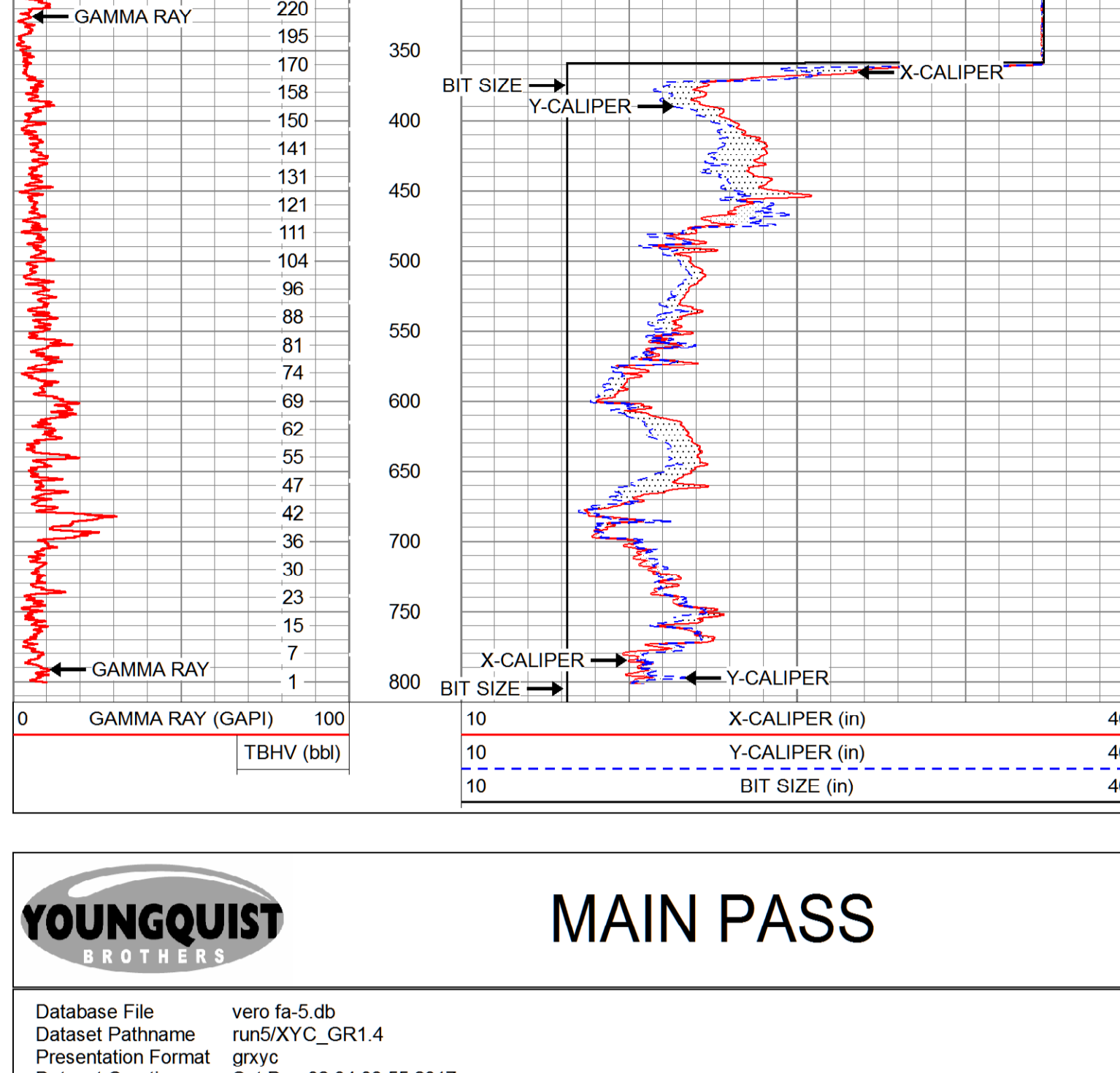
Dataset: vero fa-5.db: field/well/run5/XYC_GR22
 Total length: 18.83 ft
 Total weight: 170.00 lb
 O.D.: 1.69 in

Company	FP&L	Well	FA-5	Field	OCEC	County	OKEECHOBEE	State	FLORIDA	Other Services	SEE COMMENTS
Location	STATE ROAD 80	API #		Log Measured From	SEC	Permanent Datum	TWP	RGE		Elevation	
Drilling Measured From		State	FLORIDA	Log Measured From	M.M. 5.5	Bottom Logged Interval	SURFACE	Type Fluid	WATER	Density / Viscosity	N/A
Date	DECEMBER 01, 2017	Time Well Reached	22:10	Max. Recorded Temp.	N/A	Equipment Number	23-30	Recorded by	R. PIERSON	Wires	10
Well Number	115	Run Number	10	Run Date	11/17/17	Wires	10	Run No.	14715	Bottom Record	10
Well Name	FA-5	Run Date	11/17/17	Run Time	07:19	Run No.	14715	Run Date	11/17/17	Run Time	07:19
Well Depth	813	Run Time	07:19	Run Depth	36'	Run Depth	36'	Run Depth	36'	Run Depth	36'
Bottom Logged Interval	SURFACE	Run Depth	36'	Run Depth	36'	Run Depth	36'	Run Depth	36'	Run Depth	36'
Equipment Number	23-30	Run Depth	36'	Run Depth	36'	Run Depth	36'	Run Depth	36'	Run Depth	36'
Recorded by	R. PIERSON	Run Depth	36'	Run Depth	36'	Run Depth	36'	Run Depth	36'	Run Depth	36'
Wires	10	Run Depth	36'	Run Depth	36'	Run Depth	36'	Run Depth	36'	Run Depth	36'
Wires	10	Run Depth	36'	Run Depth	36'	Run Depth	36'	Run Depth	36'	Run Depth	36'
Wires	10	Run Depth	36'	Run Depth	36'	Run Depth	36'	Run Depth	36'	Run Depth	36'

All interpretations are opinions based on inferences from electrical or other measurements and we cannot and do not guarantee the accuracy or correctness of any interpretation, and we shall not, except in the case of gross or willful negligence on our part, be liable or responsible for any loss, costs, damages, or expenses incurred or sustained by anyone resulting from any interpretation made by any of our officers, agents or employees. These interpretations are also subject to our general terms and conditions set out in our current Price Schedule.

Comments
OTHER SERVICES:
DUAL INDUCTION W/ SP
FLUID CONDUCTIVITY/TEMPERATURE
FLOW

CALIPER MAX ARM READING 36"



Calibration Report
Database File: vero fa-5.db
Dataset Pathname: run5XYC_GR1.4
Dataset Creation: Sat Dec 02 04:03:55 2017

XY Caliper Calibration Report
Serial Number/Model: 46SM-XYCSM
Performed: Fri Dec 01 22:30:58 2017

Ring	X Caliper	Y Caliper
1: 10 in	918.696 cps	955 cps
2: 20 in	1182.5 cps	1236.96 cps
3: 30 in	1515.54 cps	1578.37 cps
4: 36 in	1633.22 cps	1793.33 cps
5: in	cps	cps
6: in	cps	cps
7: in	cps	cps
8: in	cps	cps
9: in	cps	cps
10: in	cps	cps

Gamma Ray Calibration Report
Serial Number: 13
Tool Model: GROH
Performed: Tue May 08 13:24:57 2012

Calibrator Value: 90.0 GAPI
Background Reading: 30.4 cps
Calibrator Reading: 103.6 cps
Sensitivity: 1.2303 GAPI/cps

Sensor	Offset (ft)	Schematic	Description	Length (ft)	O.D. (in)	Weight (lb)
			CHD-StdCHD	1.00	1.69	10.00
GR	7.60		GR-GROH (13)	2.75	3.50	40.00
YCAL XCAL	3.50 3.50		XYC-XYCSM (46SM)	6.60	3.50	87.00

Dataset: vero fa-5.db: field/well/run5XYC_GR1
Total length: 10.35 ft
Total weight: 137.00 lb
O.D.: 3.50 in