



XY-CALIPER
GAMMA-RAY
LOG

Company	FP&L	Well	FA-6	Location:	AP#:	Other Services
Field	OCEC	County	OKEECHOBEE	State	FLORIDA	SEE COMMENTS
City	OKEECHOBEE	State	FLORIDA	Location:	STATE ROAD 80 M.M. 5.5	
Permian Datum	SEC	TWP	RGE	Elevation		
Log Measured From	Drilling Measured From					
Date	AUGUST 22, 2017	Run Number	ONE	Run Number	ONE	
Well	FA-6	Depth Driller	136	Depth Driller	136	
Bottom Logged Interval	136'	Bottom Logged Interval	136'	Bottom Logged Interval	136'	
Top Log Interval	136'	Top Log Interval	136'	Top Log Interval	136'	
Open Hole Size	12.25"	Open Hole Size	12.25"	Open Hole Size	12.25"	
Type Fluid	MUD	Type Fluid	MUD	Type Fluid	MUD	
Density / Viscosity	NA	Density / Viscosity	NA	Density / Viscosity	NA	
Max. Recorded Temp.	NA	Max. Recorded Temp.	NA	Max. Recorded Temp.	NA	
Estimated Cement Top	1111 HRS	Estimated Cement Top	1111 HRS	Estimated Cement Top	1111 HRS	
Time Well Read on Bottom	107	Time Well Read on Bottom	107	Time Well Read on Bottom	107	
Elevation Number	FTMAYERS	Elevation Number	FTMAYERS	Elevation Number	FTMAYERS	
Location Number	E ANDERSON	Location Number	E ANDERSON	Location Number	E ANDERSON	
Recorded By	C SMITH	Recorded By	C SMITH	Recorded By	C SMITH	
Missed By		Missed By		Missed By		
Bottoms Record	From	Bottoms Record	To	Bottoms Record	From	To
Run Number	ONE	Run Number	ONE	Run Number	ONE	ONE
Bit	12.25"	Bit	136'	Bit	136'	136'
Size	WYFRT	Size	WYFRT	Size	WYFRT	WYFRT
Casing Record		Casing Record		Casing Record		
Surface String		Surface String		Surface String		
Production String		Production String		Production String		
Line		Line		Line		

<<< Fold Here >>>

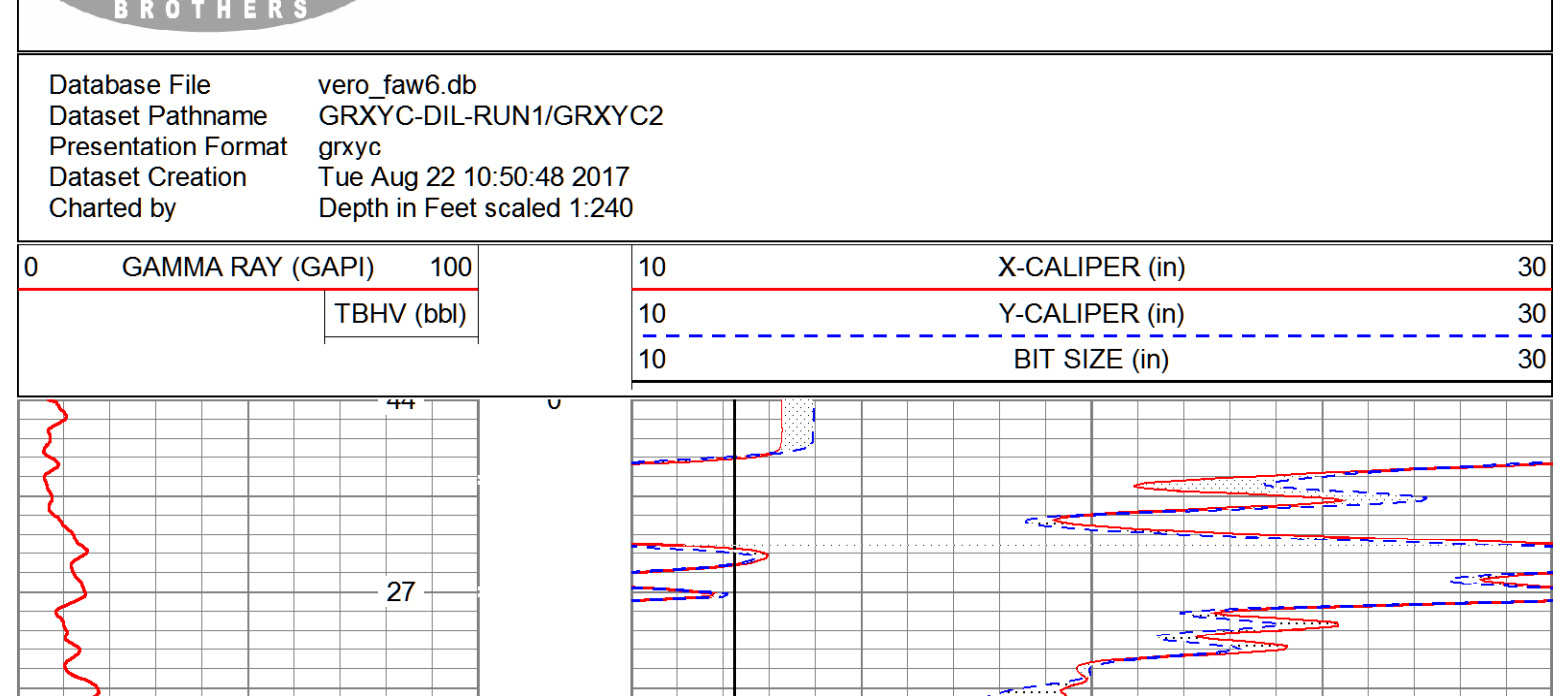
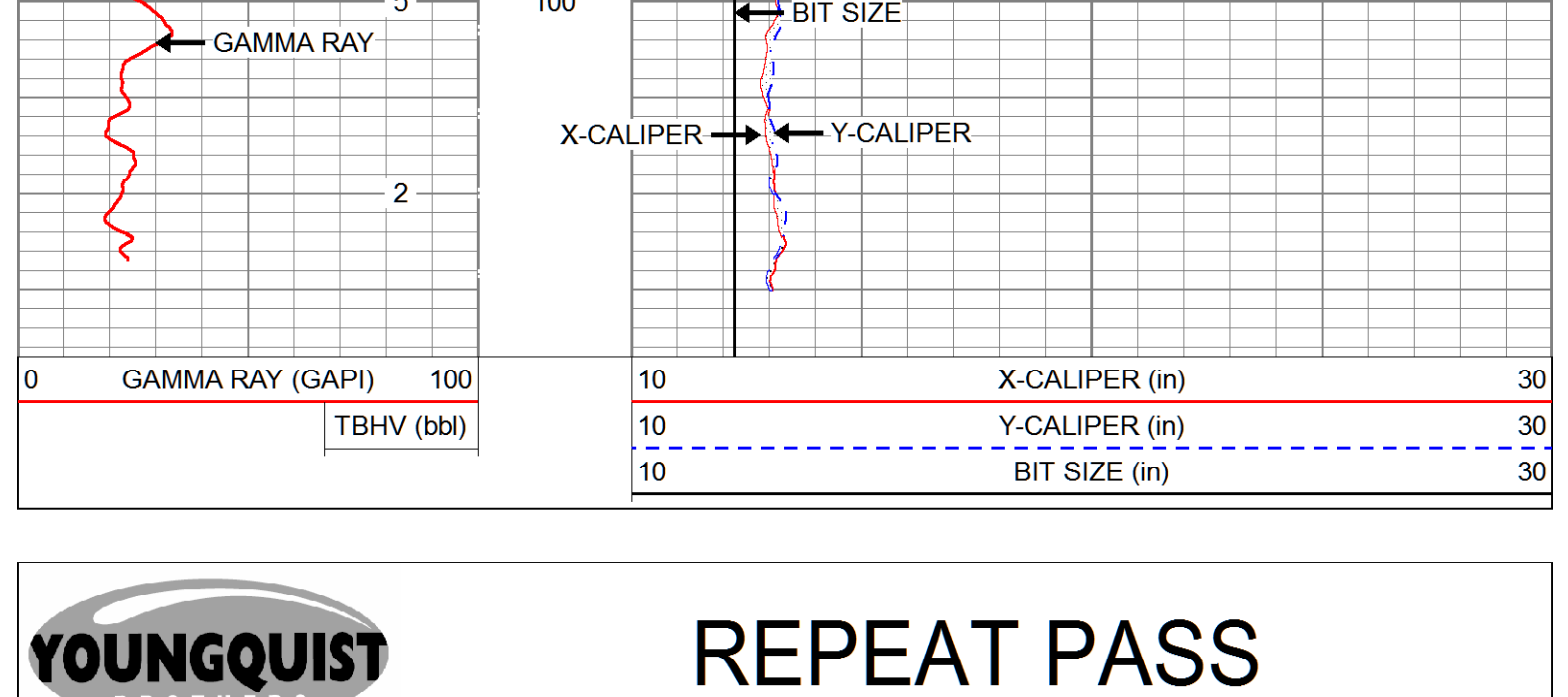
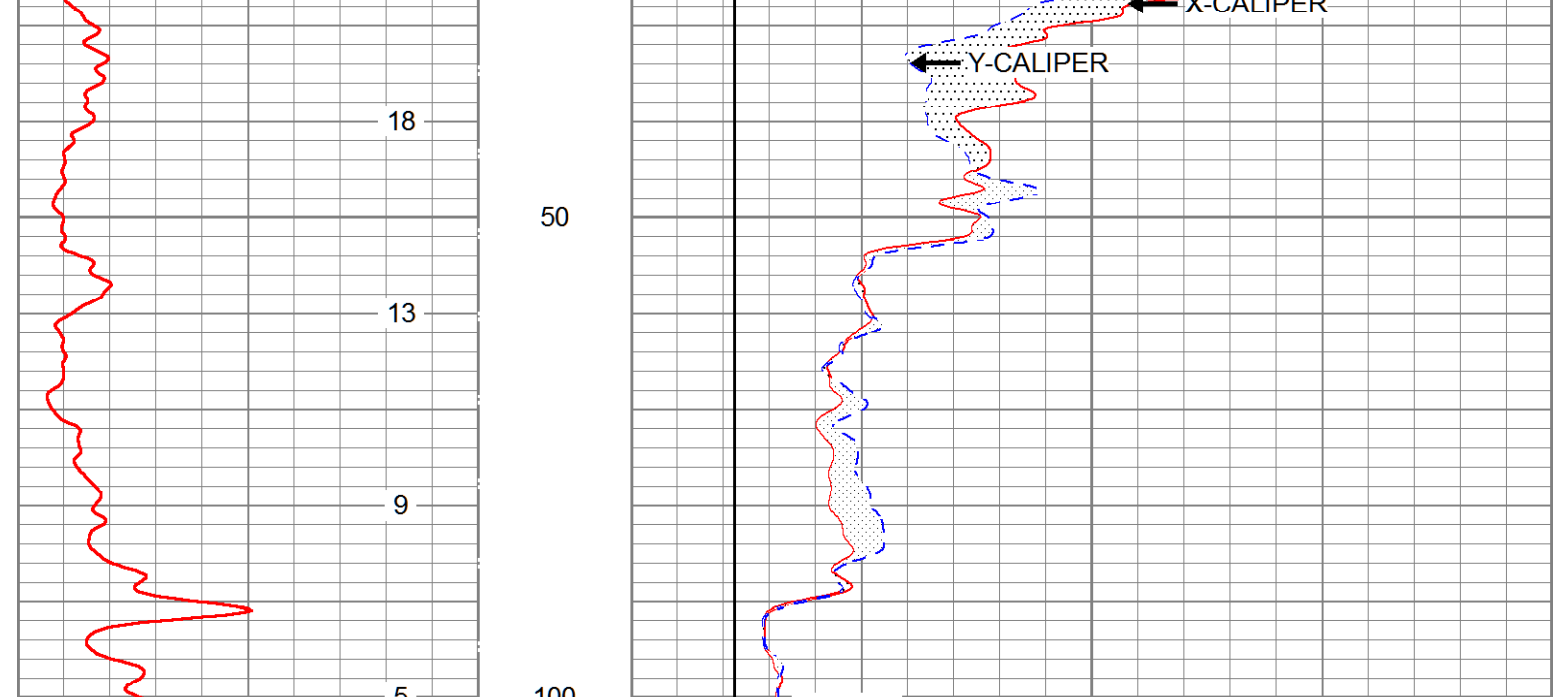
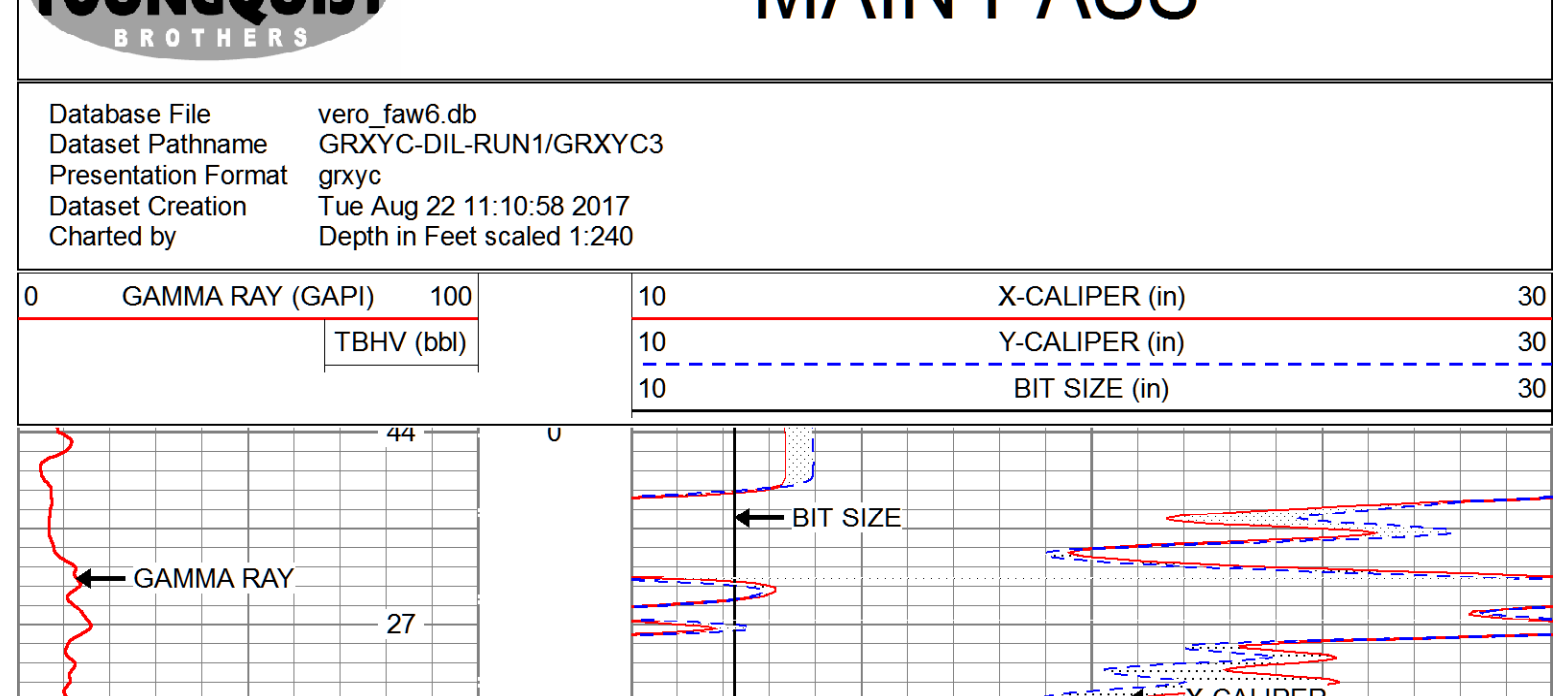
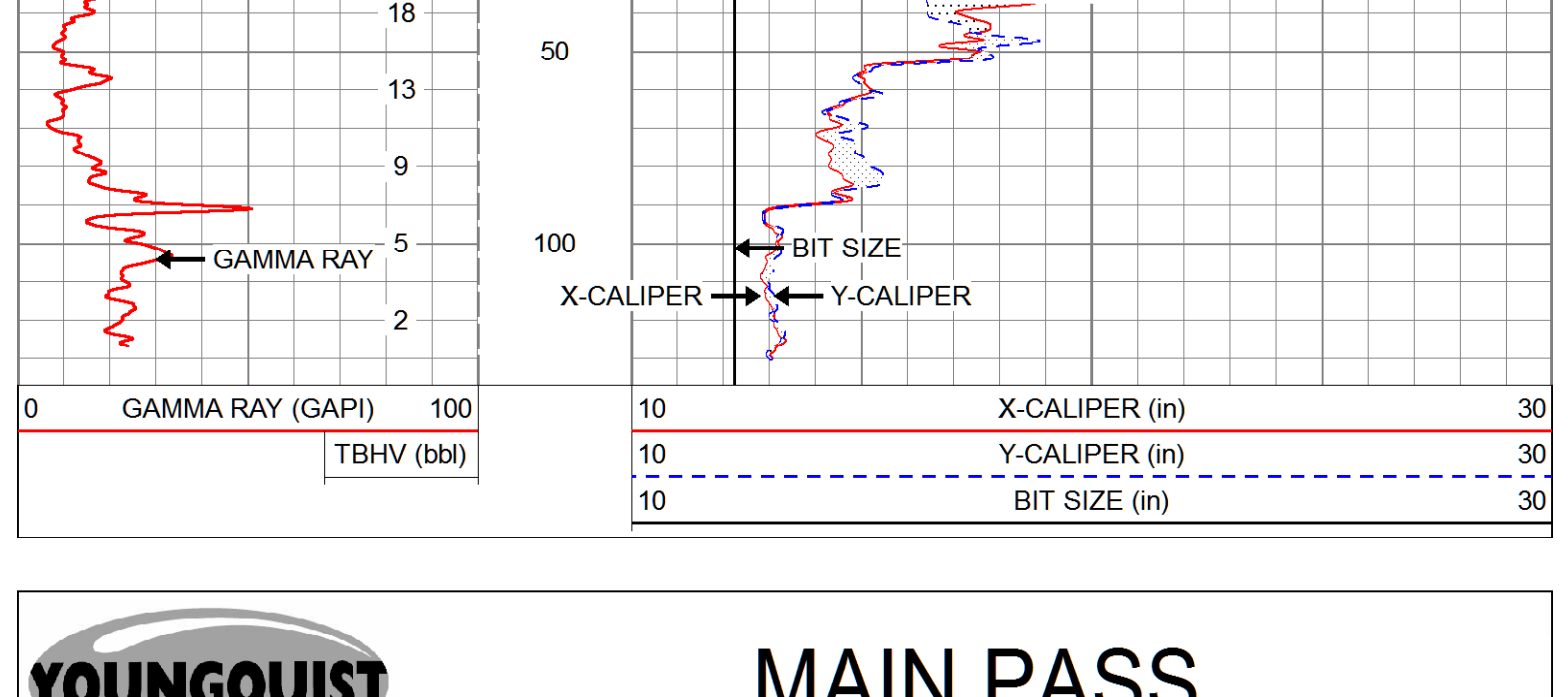
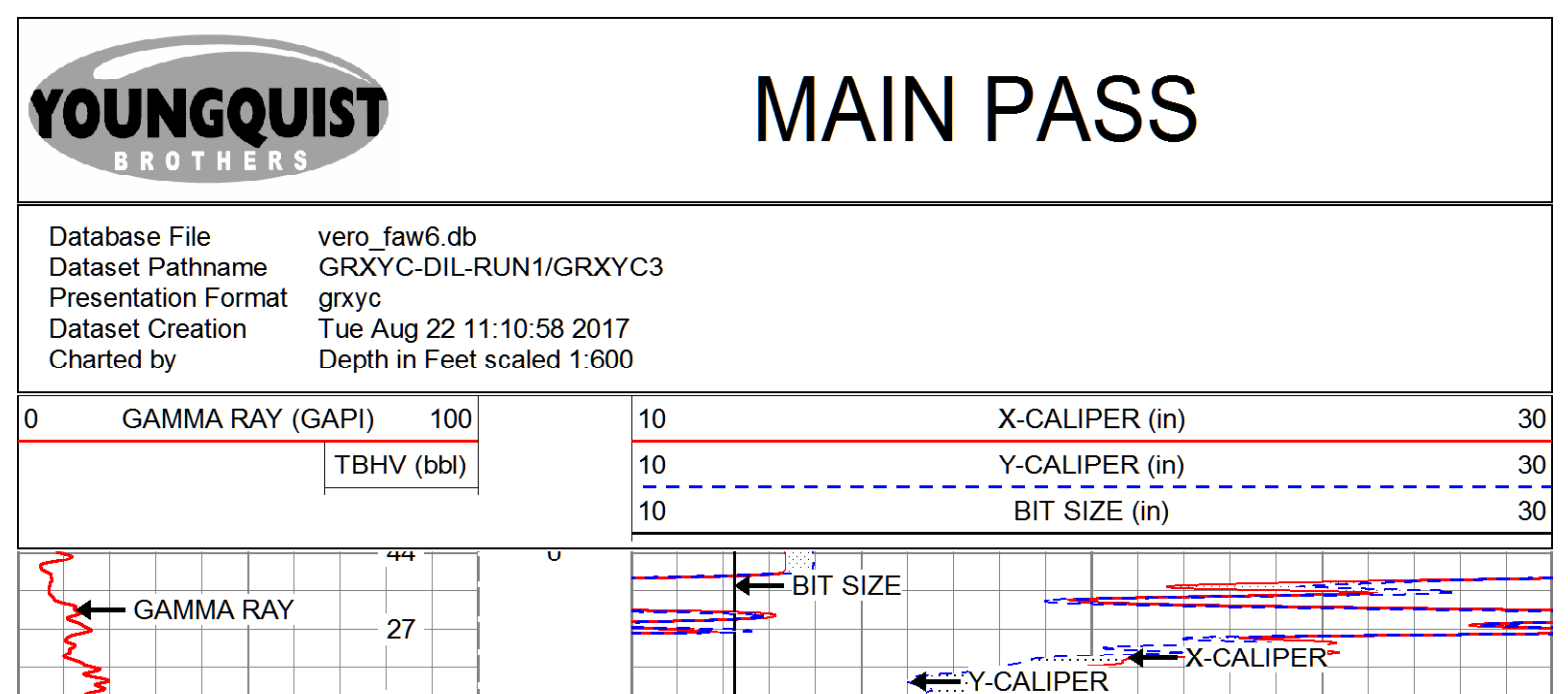
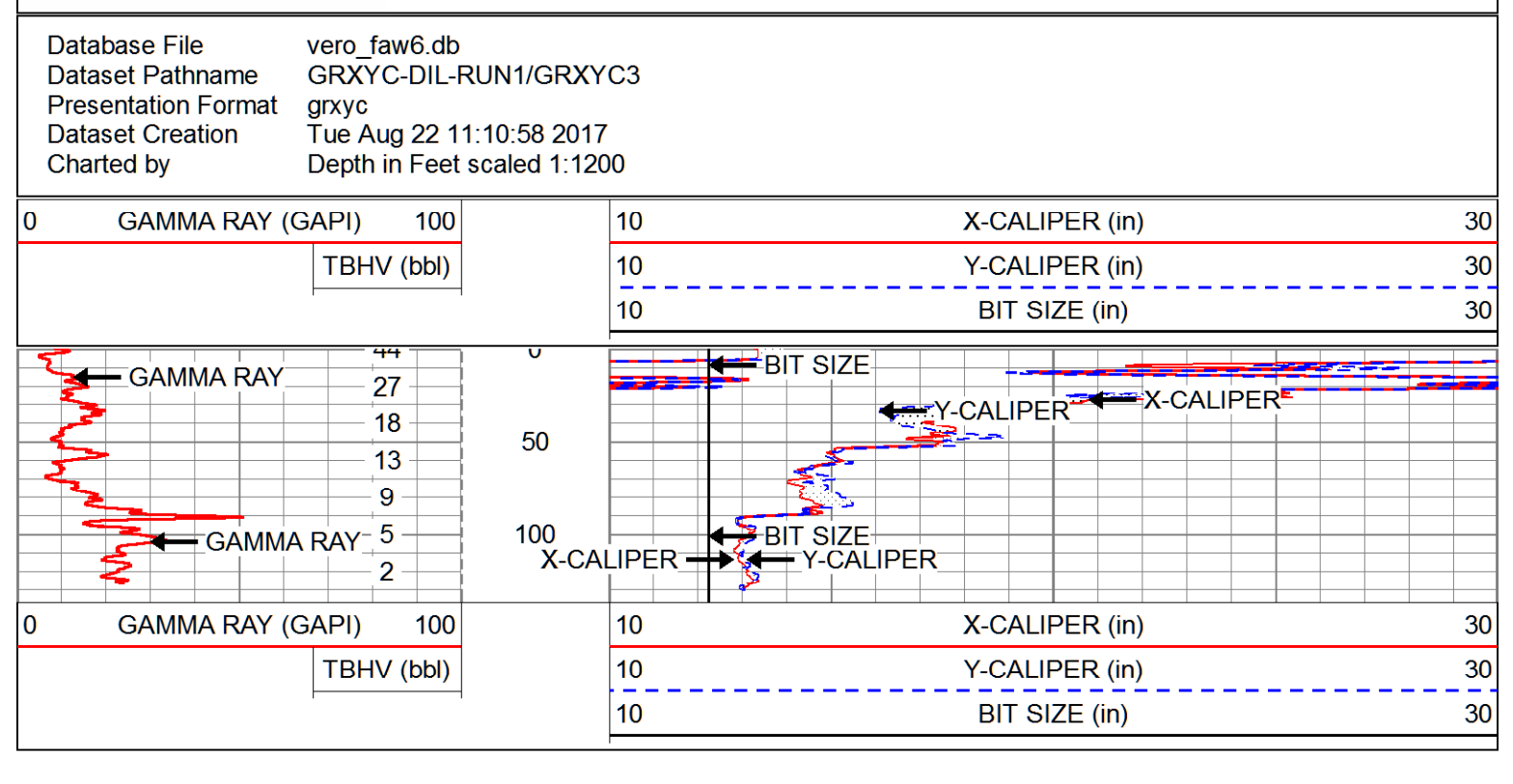
All interpretations are opinions based on inferences from electrical or other measurements and we cannot and do not guarantee the accuracy or correctness of any interpretation, and we shall not, except in the case of gross or willful negligence on our part, be liable or responsible for any loss, costs, damages, or expenses incurred or sustained by anyone resulting from any interpretation made by any of our officers, agents or employees. These interpretations are also subject to our general terms and conditions set out in our current Price Schedule.

Comments

CALIPER MAX ARM READING 34"

OTHER SERVICES

DUAL INDUCTION WITH SP



Calibration Report

Database File: vero_faw6.db
Dataset Pathname: GRXYC-DIL-RUN1/GRXYC3
Dataset Creation: Tue Aug 22 11:10:58 2017

XY Caliper Calibration Report

Serial Number/Model: 46LM-XYCLM
Performed: Tue Aug 22 10:16:33 2017

Ring	X Caliper	Y Caliper
1: 10 in	899.674 cps	944.891 cps
2: 20 in	1161.3 cps	1229.67 cps
3: 30 in	1482.5 cps	1560.22 cps
4: 34 in	1633.41 cps	1792.32 cps
5: in	cps	cps
6: in	cps	cps
7: in	cps	cps
8: in	cps	cps
9: in	cps	cps
10: in	cps	cps

Gamma Ray Calibration Report

Serial Number: 13
Tool Model: GROH
Performed: Fri Aug 04 07:59:24 2017

Calibrator Value: 69.0 GAPI

Background Reading: 5.5 cps
Calibrator Reading: 73.0 cps

Sensitivity: 1.0066 GAPI/cps

Sensor	Offset (ft)	Schematic	Description	Length (ft)	O.D. (in)	Weight (lb)
GR	7.60		GR-GROH (13)	2.75	3.50	40.00
YCAL XCAL	1.50 1.50		XYC-XYCLM (46LM)	6.60	3.50	87.00

Dataset: vero_faw6.db; field/well/GRXYC-DIL-RUN1/GRXYC3
Total length: 9.35 ft
Total weight: 127.00 lb
O.D.: 3.50 in

