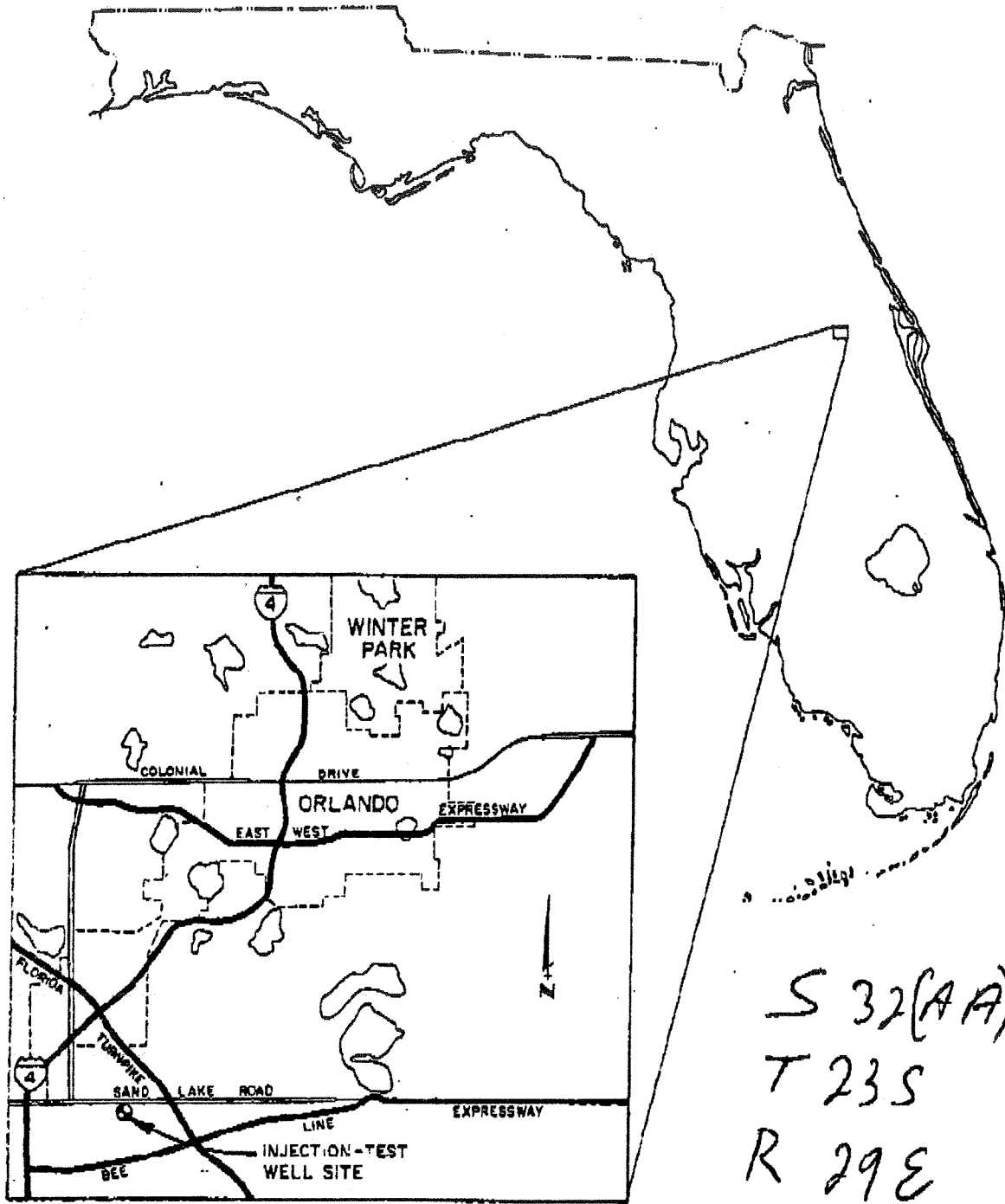


SAND LAKE WELL



S 32(AA)-?
 T 23S
 R 29E

Figure 1. Injection-test well site location.

$28^{\circ} 26' 50'' N$ $81^{\circ} 26' 25'' W$
 $X = 358514$ $Y = 1495497$
 358496



BIRDWELL

Density
Density Compensated

COMPANY LAURE ATLANTIC 0950000013
ORF-5D

WELL DEEP WELL INJECTION TEST PROGRAM
FIELD ORANGE
COUNTY ORANGE
STATE FLORIDA

LOCATION: LAKE WESSON #1 #2
OTHER SERVICES: TS-TRC-V3D
TR-CA3

PERMANENT DATUM (SECOND LEVEL) ELEV. 10.0
LOG MEASURED FROM (GROUND LEVEL) ELEV. 10.0
SHALING MEASURED FROM (GROUND LEVEL) ELEV. 10.0

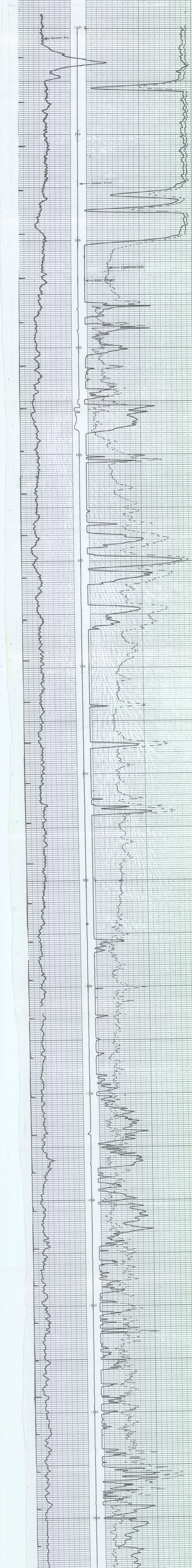
DATE	8-22-76
RUN NO.	2527
DEPTH-LOGGER	2527
BITM. LOG INTER.	2528
TOP LOG INTER.	1201
CASING-OUTER	1201
CASING-INNER	1201
BIT SIZE	12 1/4"
TYPE FLUID IN HOLE	FRESH WATER
LIQUID LEVEL	
PH FLUID LOSS	
SOURCE OF SAMPLE	
DETS. VISC.	
PH FLUID LOSS	
SOURCE OF SAMPLE	
Rm @ MEAS. TEMP.	
Rmf @ MEAS. TEMP.	
Rmc @ MEAS. TEMP.	
SOURCE Rm / Rmf	
Rm @ B.H.T.	
Rmf @ B.H.T.	
Rmc @ B.H.T.	
REMARKS:	

CHANGES IN MUD TYPE OR ADDITIONAL SAMPLES	
DATE SAMPLE NO.	
DEPTH-DRILLER	
TYPE FLUID IN HOLE	
LIQUID LEVEL	
DETS. VISC.	
PH FLUID LOSS	
SOURCE OF SAMPLE	
DETS. VISC.	
PH FLUID LOSS	
SOURCE OF SAMPLE	
Rm @ MEAS. TEMP.	
Rmf @ MEAS. TEMP.	
Rmc @ MEAS. TEMP.	
SOURCE Rm / Rmf	
Rm @ B.H.T.	
Rmf @ B.H.T.	
Rmc @ B.H.T.	
REMARKS:	

EQUIPMENT DATA	
RUN NO.	ONE
DEN. PANEL MOD. NO.	LAJA-1001
DEN. PANEL SER. NO.	1
DEN. SONDE MOD. NO.	LAJA-8001
DEN. SONDE SER. NO.	5
DEN. SOURCE NO.	CS-319
DEN. CAL. MOD. NO.	LMCC-2001
DEN. CAL. SER. NO.	3
GR. SONDE MOD. NO.	LAAB-6001
GR. SONDE SER. NO.	31
SERVICE ORDER/INV.	516253
SCALE CHANGES:	
TYPE LOG	DEPTH
SCALE UP HOLE	
SCALE DOWN HOLE	

BOREHOLE & CASING RECORD	
BIT SIZE	FROM TO
CGSIZE	WT.
FROM	TO

LOGGING DATA	
DEPTHS	FROM TO
DENSITY	MATRIX DENSITY FLUID DENSITY HOLE FLUID T.C. SEC. A.P.U. PER LOG DIV. GAMMA RAY T.C. SEC. 250 DIV LEFT



MAX. REC. TEM. 29.99
 RECORD BY R. HARRIS
 WITNESSED BY P. HARRIS



BIRDWELL

16" Induction

DR-5205

COMPANY LARIE ATLANTIC OHS000013

WELL ORT-50 DEEP WELL INSPECTION TEST PROGRAM

COUNTY ORANGE STATE FLORIDA

LOCATION: *Tract 7-550 8 1/2' 100' 000' OTHER SERVICES:*

PERMANENT DATUM GUNTER TOWER

DATE 8-22-76

DEPTH-DRILLER 2327

DEPTH-LOGGER 2327

TOP LOG INTER. 120'

CASING-DRILLER 59' @ 120'

BR SIZE 120' / 4"

PH FLUID LOSS ml

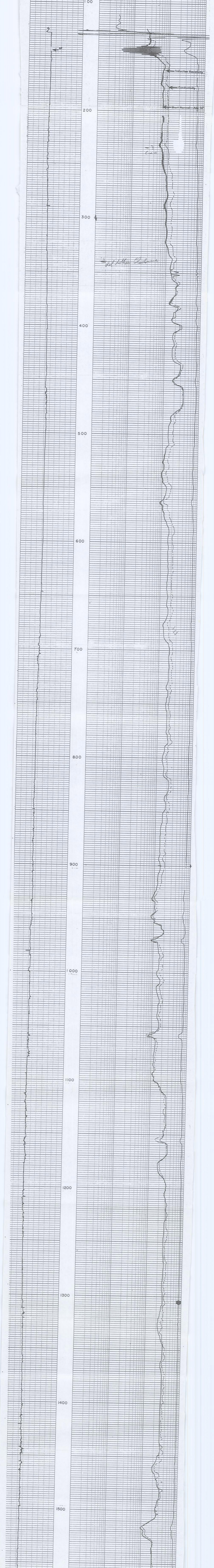
SOURCE OF SAMPLE

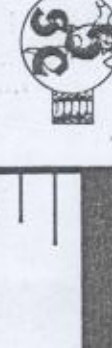
TIME SINCE CING. 35

RECORDED BY P. HACKETT

CHANGES IN MUD TYPE OR ADDITIONAL SAMPLES		EQUIPMENT & LOGGING DATA	
DATE SAMPLE NO.		RUN NO.	ONE
DEPTH DRILLER		PANEL MODEL NO.	LBFF-1001
TYPE FLUID IN HOLE		PANEL SERIAL NO.	4
DENS.		SONDE MODEL NO.	LBFF-6001
VISC.		SONDE SERIAL NO.	7
PH FLUID LOSS	ml	STANDOFF INCHES	2
SOURCE OF SAMPLE		LOGGING SPEED F.P.M.	70
Rm @ Meas. Temp.	⊙	SER. ORDER/INV. NO.	516253
Rm @ Meas. Temp.	⊙	SCALE CHANGES:	
Rm @ Meas. Temp.	⊙	TYPE LOG	DEPTH
SOURCE: Rm Rmc	⊙	SCALE UP HOLE	SCALE DOWN HOLE
Rm @ B.H.T.	⊙		
Rmf @ B.H.T.	⊙		
Rmc @ B.H.T.	⊙		

SPONTANEOUS-POTENTIAL MILLIVOLTS	DEPTHS	RESISTIVITY OHMS M ² /M	CONDUCTIVITY MILLIMHOS/M = OHMS M ² /M
		16" NORMAL	INDUCTION 6 COIL 40"
		40" INDUCTION RESISTIVITY	
		0	100
		1000	





BIRDWELL

Gamma Ray-Caliper Temperature

ORF-50-01-52001-520013
ORF-50-01

COMPANY LARRE ATLANTIC 095000013
WELL DEEP WELL INJECTION PROGRAM

FIELD ORANGE STATE FLORIDA
COUNTY ORANGE

LOCATION: *Line 7534m x 6m*
32 29
SEC. TWP. RGE. ELEV. K.E. N.M.
PERMANENT DATUM (GROUND) LEVEL. GCS-DIG-15
LOG MEASURED FROM K.B. GROUND LEVEL. *87.0* DIA. N.A.
DRILLING MEASURED FROM *87.0* GROUND LEVEL

DATE 3-22-75
RUN NO. ONE

DEPTH - DRILLER 230'
BTL. LOG. INTER. 2328'
TOP LOG. INTER. 130'
TYPE FLUID IN HOLE FRESH WATER
SALINITY PPM CL. FRESH WATER
SALINITY % SOL. FRESH WATER
LEVEL 1.5' 0.0% FILL
MAX. REC. TEMP. -°F. 96 HRS
RECORDED BY J. H. HARRIS
OPER. RIG TIME 5 HOURS
LOCATION CLARKSBURG, T. VA.

BORE HOLE RECORD
RUN NO. BHT FROM TO SITE WGT. SURF. TO
1 12 1/4 2136" 5.02 130"

EQUIPMENT DATA				WELL DATA			
GR. SONDE MOD. NO.	ONE	ORIGINAL T.D.		F.B.T.D.			
GR. SONDE SER. NO.		TYPE WELL		PROD.	<input type="checkbox"/> OR INJ.	<input type="checkbox"/> RATE	
DIAMETER		WELL HEAD PRESSURE		DRILLED WITH: ROTARY	<input type="checkbox"/> CABLE TOOL	<input type="checkbox"/>	
CAL. SONDE MOD. NO.	1 FFA-6003	CEMENTING SHOE @		OPEN HOLE SHOT WITH:			
CAL. SONDE SER. NO.	2	AMOUNT	FROM	TO			
DIAMETER	3 5/8"	AMOUNT	FROM	TO			
ARM LENGTH	15"	AMOUNT	FROM	TO			
ARM DIAM. MIN.-MAX.	3 5/8-33	AMOUNT	FROM	TO			
CENT. SIZE RANGE		AMOUNT	FROM	TO			
THERMISTOR MOD. NO.		AMOUNT	FROM	TO			
TRUCK NO.	2099						
SERVICE ORDER/INV.	516253						

LOGGING DATA				REMARKS:			
DEPTH	SPEED	T.C.	CPM	ZERO DIV.	API UNITS	INCHES	
FROM	TO	FT./MIN.	SEC.	FULL SCALE	L OR R.	/LOG DIV.	

