



RMBAKER LLC

WELL: OSF60_GW2
LOG STAGE:

Geology and Geophysics

8600 Oldbridge Lane
Orlando, FL 32819
mobile ph 407-733-8958
fax 407-370-4129

LOGS PROVIDED:
CALIPER
NATURAL GAMMA

rob@rmbaker.com
www.rmbaker.com

Licensed and Insured

SRVC RMBAKER LLC
UWI TPKDOT OSF60_GW2
FLD TPKDOT
PROV FL
CTY OSCEOLA

COMPANY: RMBAKER LLC
WELL NAME: TPKDOT OSF60_GW2
FIELD: TPKDOT
COUNTRY: USA STATE: FL COUNTY: OSCEOLA
LOC: N/A
NOTES:

ALL SERVICES:
CALIPER
NATURAL GAMMA

PERMANENT DATUM:

ELEVATION:

COORDINATES:

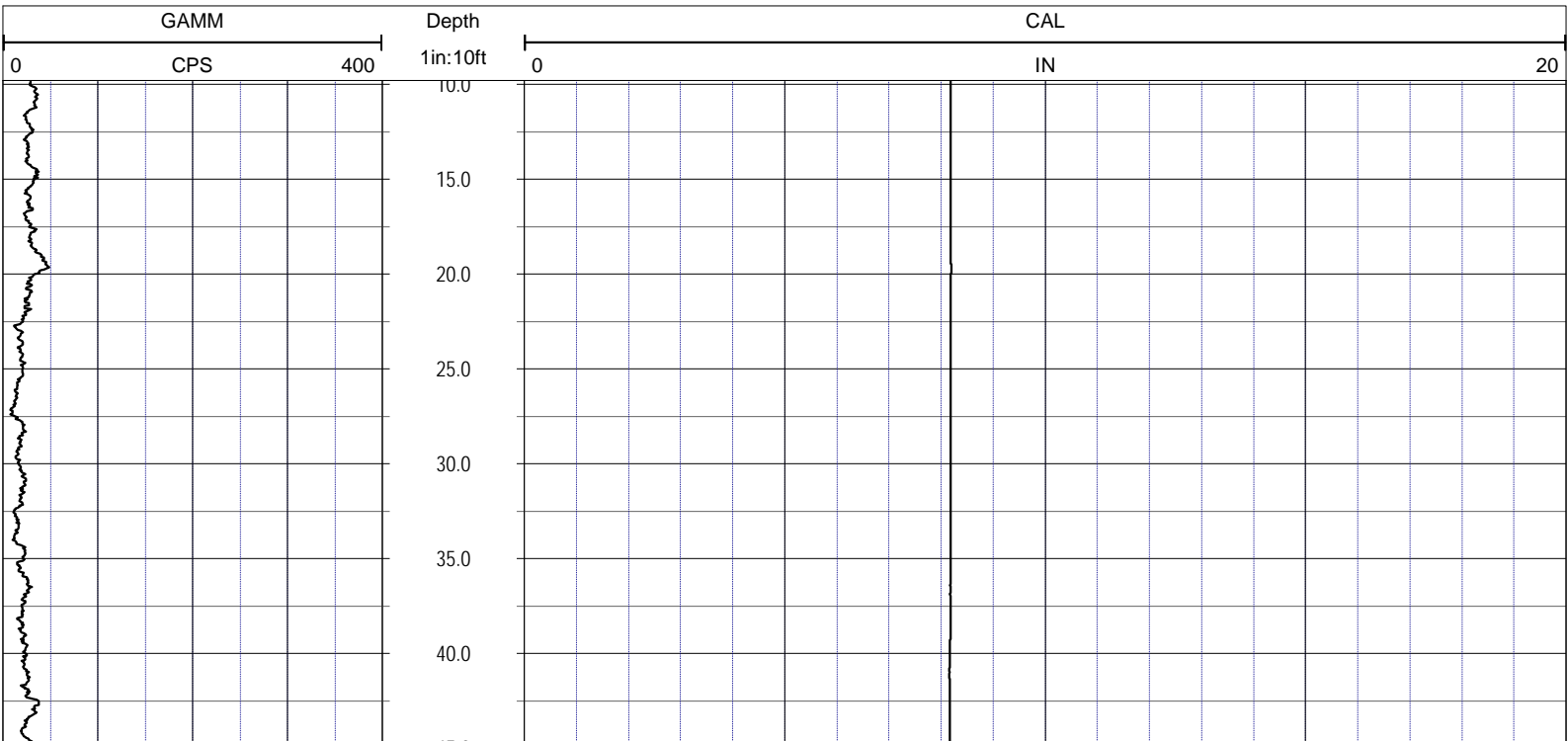
LOG MEAS. FROM: TOC

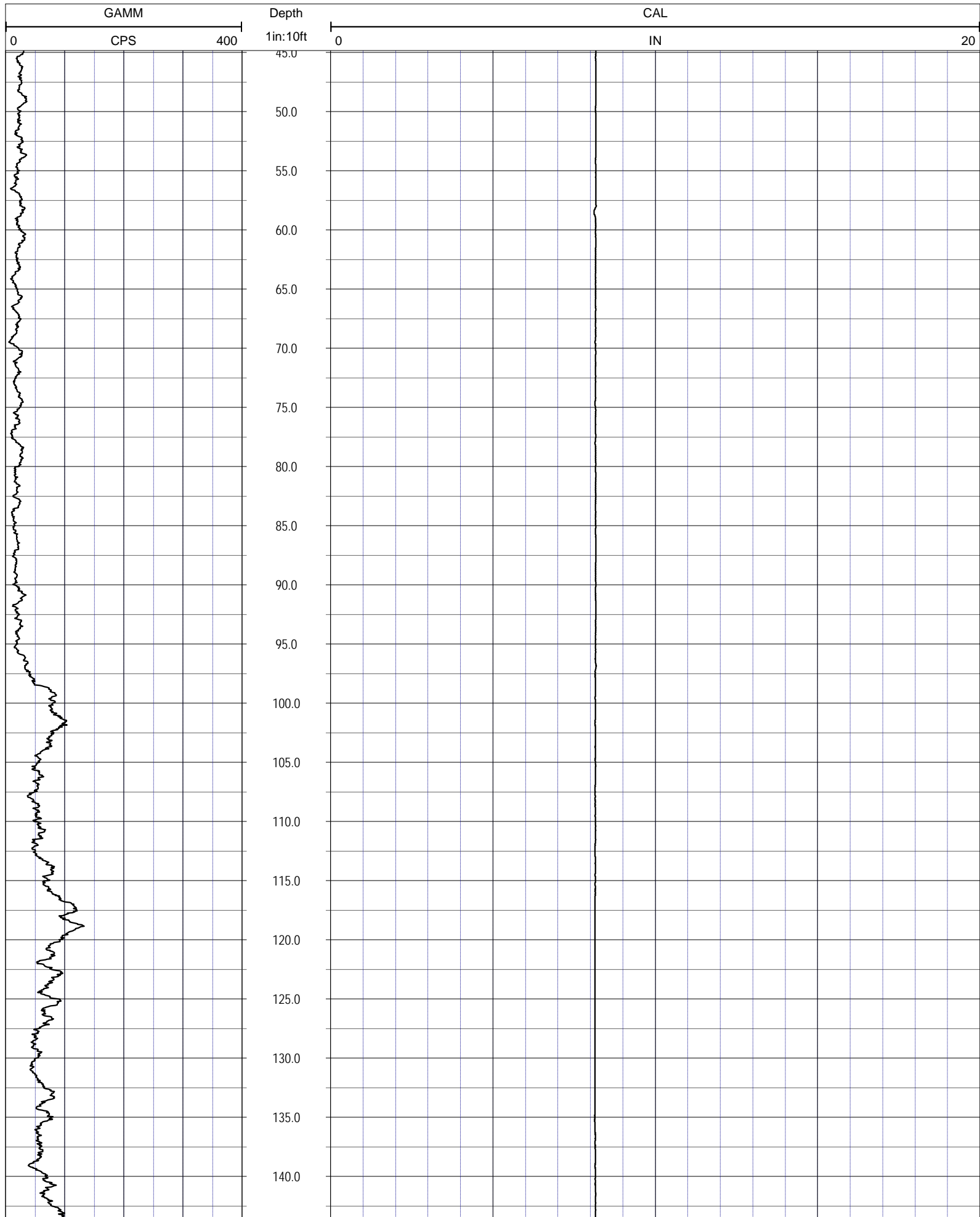
689767.825
1222465

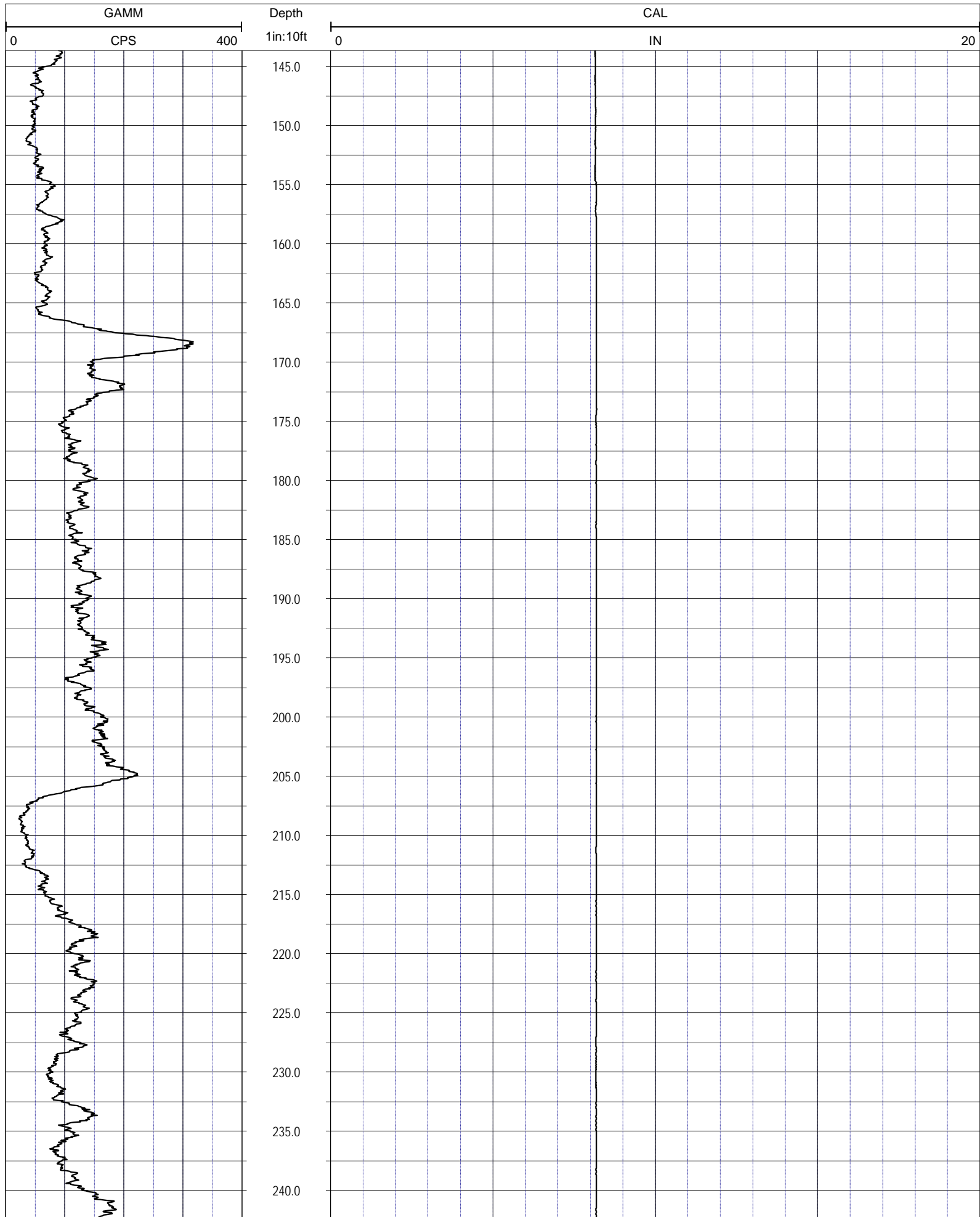
DRILLING MEAS. FROM:

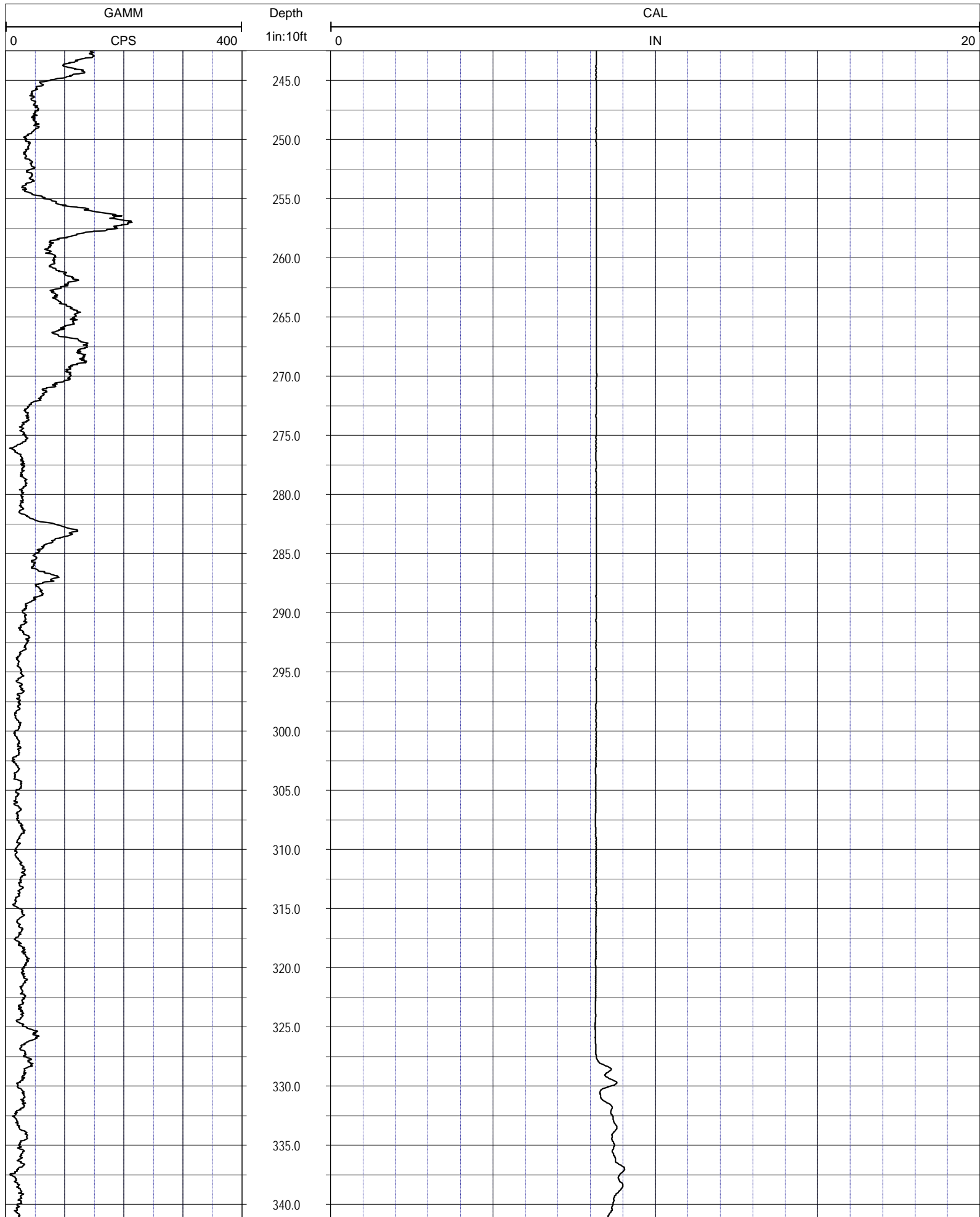
DATE	20 Jun 12	TYPE FLUID IN HOLE	
RUN No	1	SALINITY	
TYPE LOG		DENSITY	
DEPTH-DRILLER		LEVEL	
DEPTH-LOGGER	590.1	MAX. REC. TEMP.	
BTM LOGGED INTERVAL		LOGGING SPEED (FT/MIN)	30
TOP LOGGED INTERVAL		TROLLING DIRECTION	UP
DRILLER		PUMPING RATE (GPM)	
RECORDED BY	RMBAKER LLC		
WITNESSED BY			

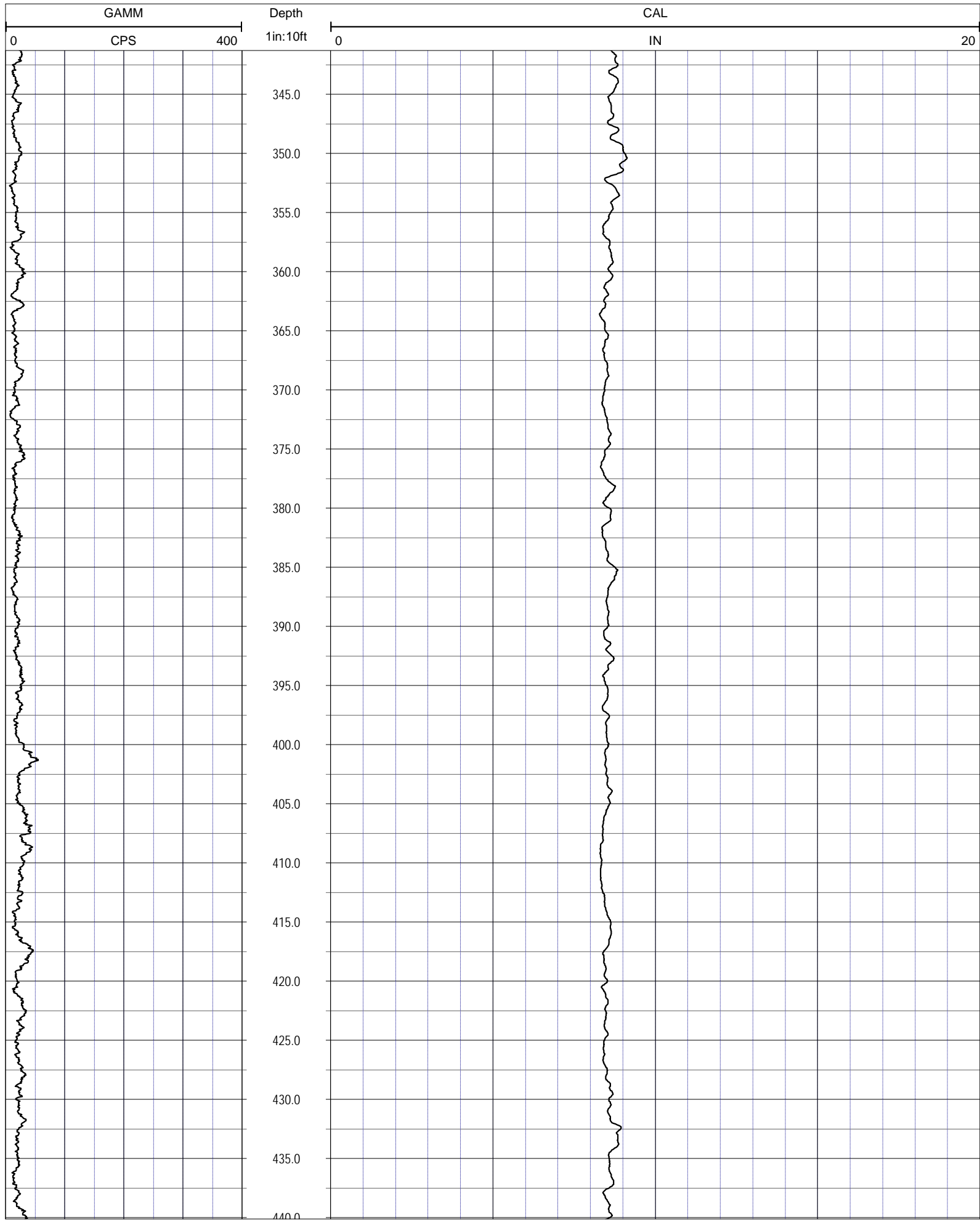
BOREHOLE RECORD				CASING RECORD			
NO.	BIT	FROM	TO	SIZE	MAT.	FROM	TO
				8	PVC	0	327.9

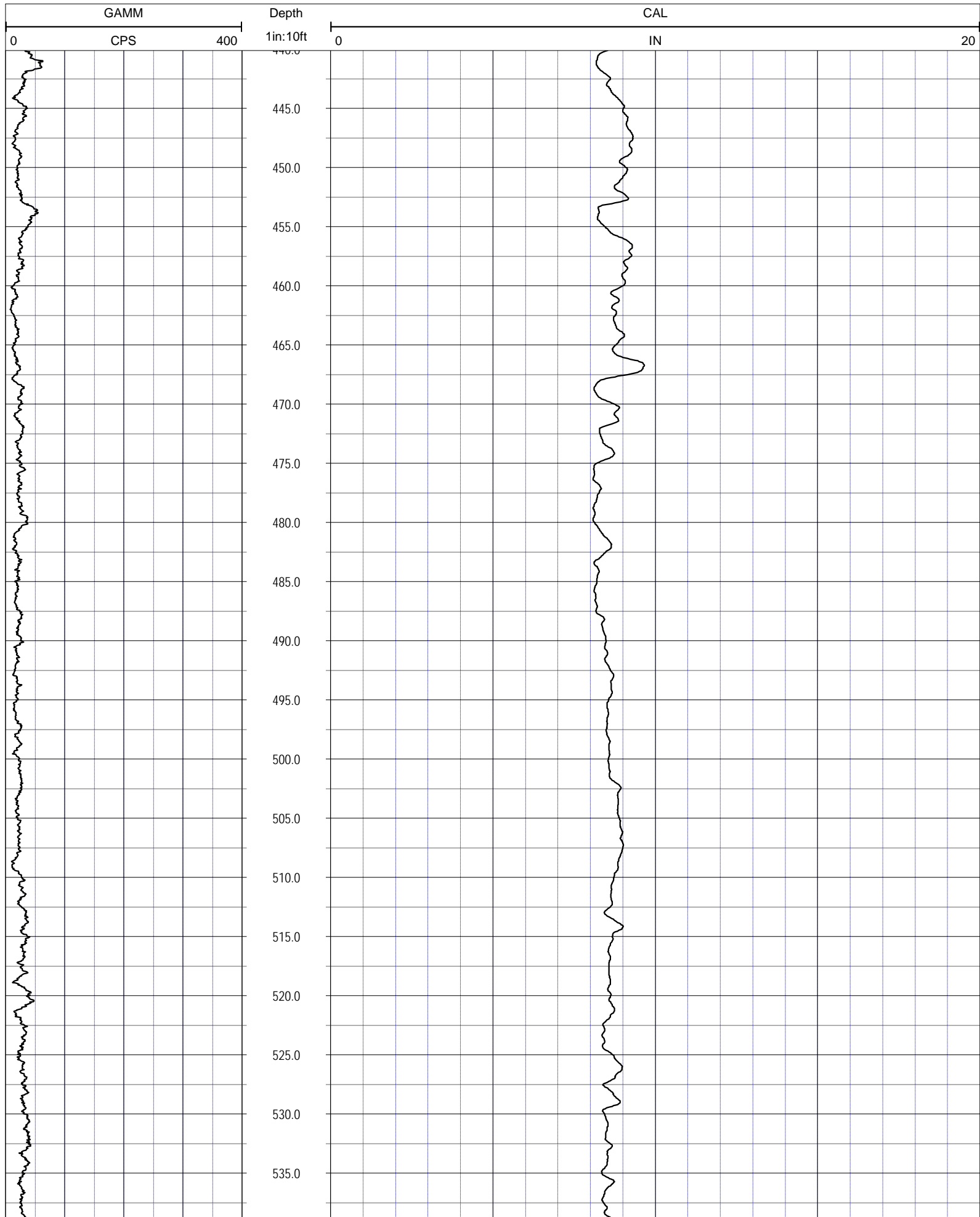


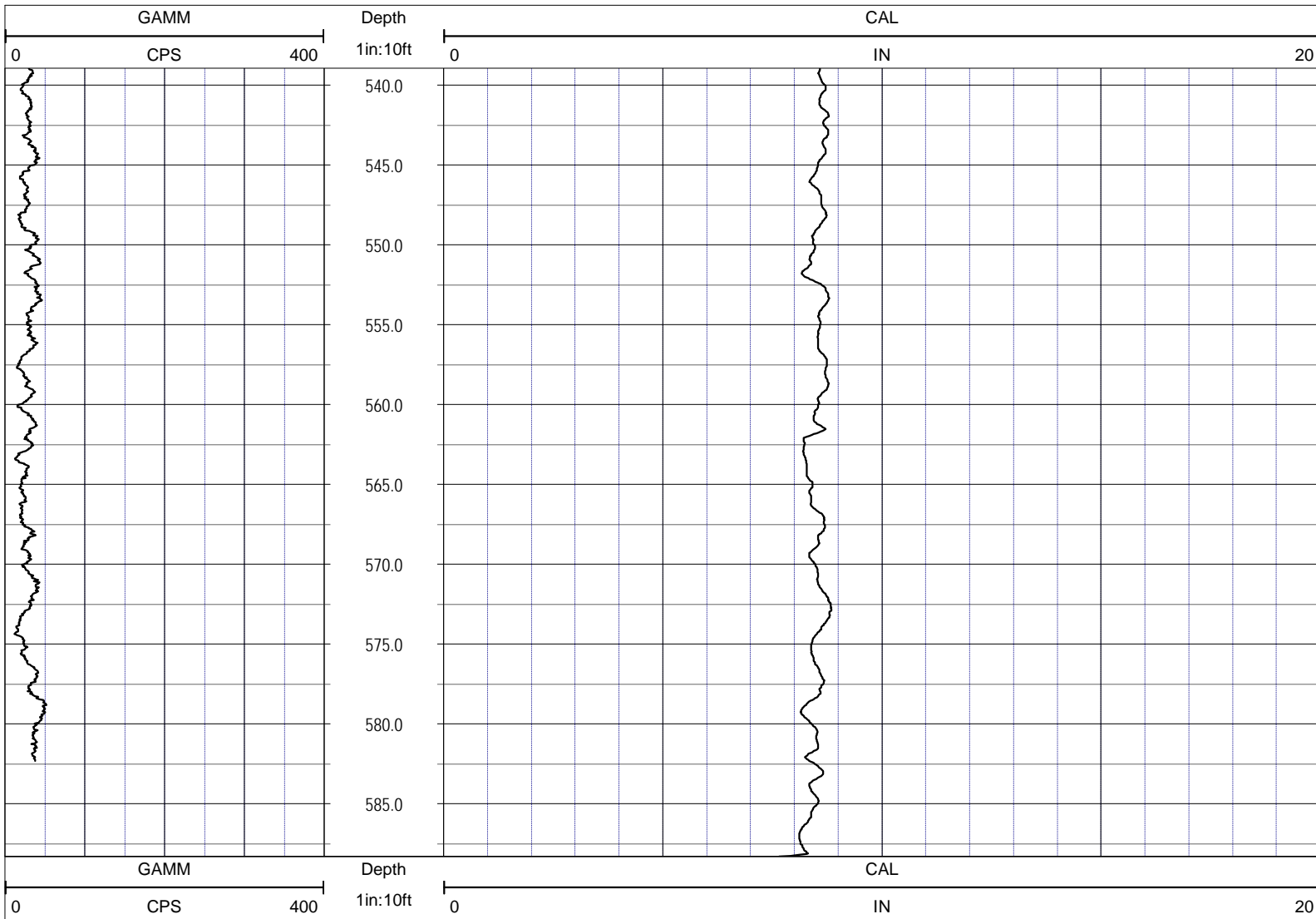












NOTES:

While due care has been exercised in the performance of these measurements and observations, in accordance with methodologies utilized by the general practitioner, RMBAKER LLC can make no representations, warranties, or guarantees with respect to latent or concealed conditions that may exist, which may be beyond the detection capabilities of the methodologies used, or that may extend beyond the areas and depths surveyed.

The geophysical well logs show subsurface conditions as they existed at the dates and locations shown, and it is not warranted that they are representative of subsurface conditions at other locations and times.

If, at any time, different subsurface conditions from those observed are determined to be present, we must be advised and allowed to review and revise our observations if necessary.

Certificate of Authorization GB 458

END OF LOG