



SOUTH FLORIDA WATER MANAGEMENT DISTRICT

Rev. 1/16

SCADA RTU Station Name: INRCTYE	DB Hydro Station Name: OSF99R	DB Hydro Site Name: OSF99R	Agency: S.F.W.M.D	Dates of Field Work: 06/11/2020
Party Chief: N. Strickland	Field Book: MISC 7G	Page(s): 58	Report Prepared by: A.SCHAUER	
Surveyors Notes:		Surveyor's Certification:		

SITE SPECIFIC DATA

Reference Elevation(s) (NAVD88): 70.78 feet	Site Benchmark(s)/Elevation(s) (NAVD88): OSFWELLSBM1 = 67.68 feet	Source Benchmark(s) /Elev(s) (NAVD88):		
Calibration Port Elev(s) (NAVD88): N/A	Ground Elevation (NAVD88): NE Ground = 67.5 feet SE Ground = 67.9 feet SW Ground = 67.7 feet NW Ground = 67.6 feet	Pad Elevation (NAVD88): NE Pad = 68.03 feet SE Pad = 68.06 feet SW Pad = 68.08 feet NW Pad = 68.06 feet	Corpscon 6.0.1 Conversion Factor (NAVD88 to NGVD29): +0.94 feet	

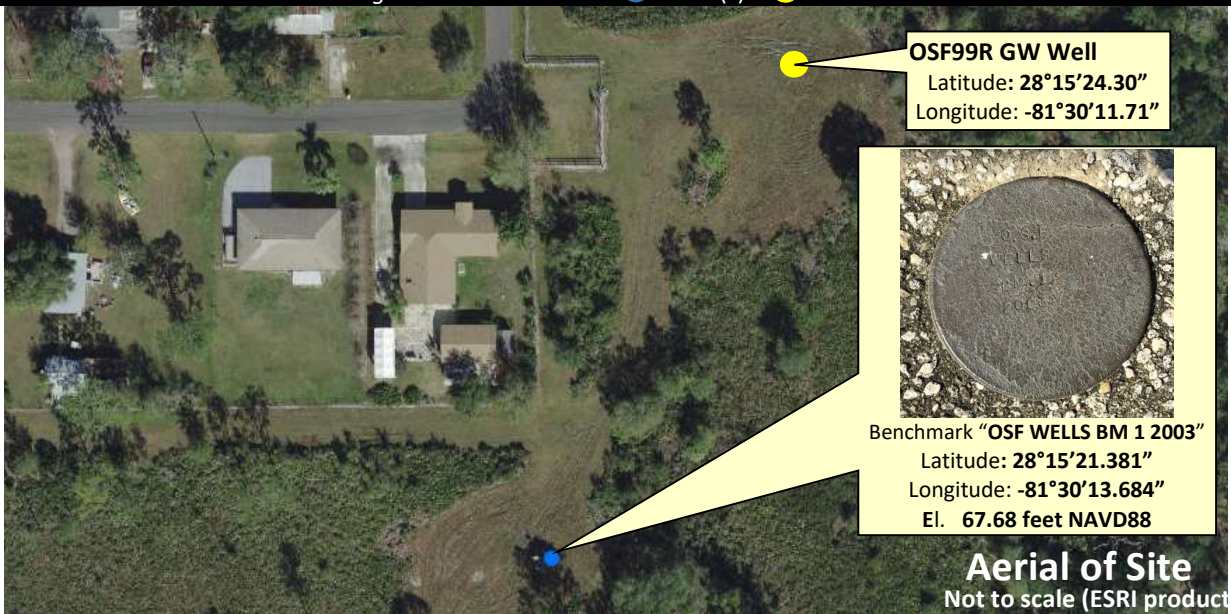
GEOGRAPHIC DATA

Section 3 Township 26 South Range 28 East				
<input checked="" type="checkbox"/> Well(s) <input type="checkbox"/> Gate(s) <input type="checkbox"/> Benchmark(s)	Latitude: 28°15'24.30"	Longitude: -81°30'11.71"	Northing (Y): N/A	Easting (X): N/A
Position (horizontal) Source: ESRI Pick Point & Garmin Handheld GPSMAP78				

Notes: NAVD88 – North American Vertical Datum of 1988; NGVD29- National Geodetic Vertical Datum of 1929; Corpscon 6.0.1 - A U.S. Army Corps of Engineers Engineering Research and Development Center Topographic Engineering Center Alexandria, Virginia Windows-based program to convert coordinates and elevations between datum's using vertcon05.txt and vertcon05.05 files supplied by the U.S. Army Corps of Engineers South Atlantic Division, Jacksonville Fl.

PICTURES

Legend: SFWMD Disk = ● Well(s) = ●

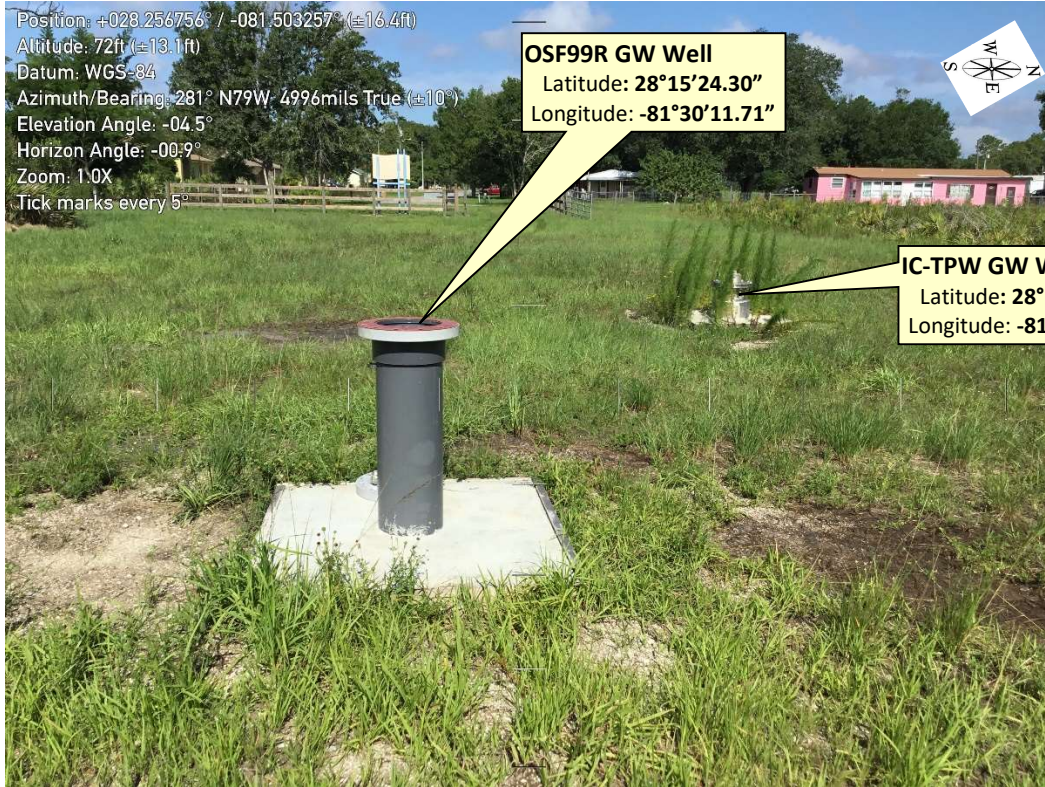




SOUTH FLORIDA WATER MANAGEMENT DISTRICT

Rev. 1/16

OSF99R GW Well Site



Position: +028 256756° / -081 503257° (±16.4ft)
Altitude: 72ft (±13.1ft)
Datum: WGS-84
Azimuth/Bearing: 281° N79W 4996mils True (±10°)
Elevation Angle: -04.5°
Horizon Angle: -00.9°
Zoom: 1.0X
Tick marks every 5°

OSF99R GW Well
Latitude: 28°15'24.30"
Longitude: -81°30'11.71"

IC-TPW GW Well
Latitude: 28°15'24.37"
Longitude: -81°30'11.95"



Position: +028 256756° / -081 503258° (±16.4ft)
Altitude: 69ft (±13.1ft)
Datum: WGS-84
Azimuth/Bearing: 211° S31W 3751mils True (±10°)
Elevation Angle: -90.0°
Horizon Angle: -99.9°
Zoom: 1.0X
Tick marks every 5°

OSF99R GW Well
Reference Elev. = 70.78 feet NAVD88



RTU INRCT YE W
STN OSF99R
ELEV 70.78 NAVD88
DATE 6 11 2020
BY NS MW
OFFSET+ 0.94

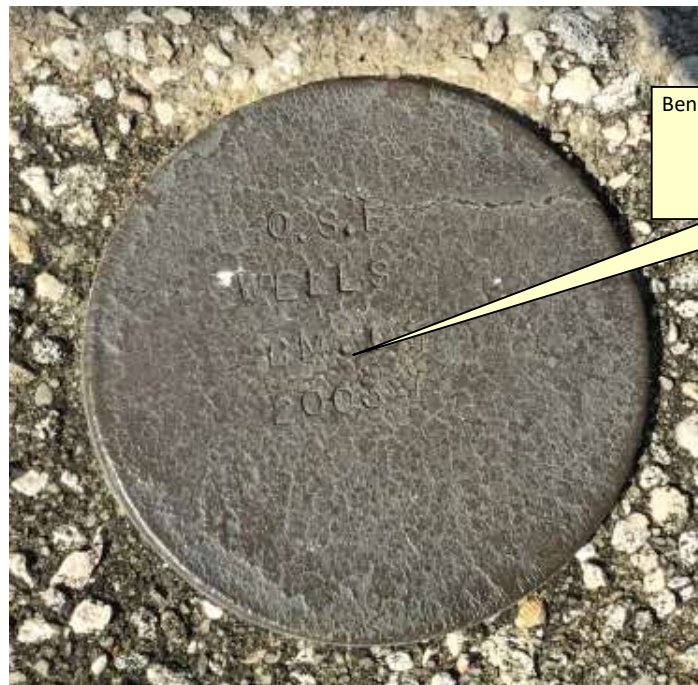


SOUTH FLORIDA WATER MANAGEMENT DISTRICT

Rev. 1/16

OSF99R SITE BENCHMARK "OSF WELLS BM 1 2003" El. = 67.68 feet (NAVD88)

Position: +028.255887° / -081.503902° (± 16.4 ft)
Altitude: 87ft (± 13.1 ft)
Datum: WGS-84
Azimuth/Bearing: 019° N19E 0338mils True ($\pm 10^\circ$)
Elevation Angle: +01.2°
Horizon Angle: -02.3°
Zoom: 1.0X
Tick marks every 5°



Benchmark "OSF WELLS BM 1 2003"
Latitude: 28°15'21.381"
Longitude: -81°30'13.684"
El. 67.68 feet NAVD88



SOUTH FLORIDA WATER MANAGEMENT DISTRICT

Rev. 1/16

DESIGNATION: OSFWELLSBM1	PROJECT: CFWI DMIT Wetland Intercession City
ESTABLISHED BY: SOUTH FLORIDA WATER MANAGEMENT DISTRICT	SURVEYOR: Gregory A. Prather
RECOVERED BY: PICKETT AND ASSOCIATES, INC.	DATE: June 25, 2018

GEOGRAPHIC POSITION

SECTION 03	TOWNSHIP 26 SOUTH	RANGE 28 EAST
COUNTY: Osceola	NAME OF QUADRANGLE: Intercession City GEOGRAPHIC INDEX OF QUAD: 3513	
HORIZONTAL DATUM: 1927 (1983) 2022 Other ___ (circle one) ZONE (E) or W		
VERTICAL DATUM: MSL 1929 (1988) 2022 Other ___ (circle one)		
VERTICAL ACCURACY: 1 2 (3)		
STATE PLANE COORDINATE	(N) Y= 1426092.27	(E) X= 493979.69
		NAVD 88 EL. 67.680 NGVD 29 EL. 68.618

CORPSCON 6.0.1 CONVERSION FACTOR (NAVD88 TO NGVD29): **0.938'**

(A U.S. Army Corps of Engineers Engineering Research and Development Center Topographic Engineering Center Alexandria, Virginia Windows-based program to convert coordinates and elevations between datum's using vertcon05.txt and vertcon05.05 files supplied by the U.S. Army Corps of Engineers South Atlantic Division, Jacksonville FL.)

ACTUAL NGS or (ngvd29.txt file)

OPUS Ortho Height

LATITUDE: **28° 15' 21.38148" (N)** LONGITUDE: **81° 30' 13.68407" (W)** (OPUS – NAD_83 (2011) EPOCH:2010.0000)

RECOVERY DATA

Stamping: OSFWELLSBM1

To Reach: From the intersection of US17/92 & Tallahassee Blvd, East on US 17/19 0.25 Miles to intersection of Shepherd Ln & Nocatee St, South on Shepherd Ln 0.25 Miles to Wile Rd, East on Wile Road 0.125 Miles to a gate, thru the gate and south 250 ft to the mark set in a concrete slab.

NOTABLE LAND MARKS:

NGS-SOURCE BENCHMARK:

FIELD BOOK **928 PAGE 7-8**

PICTURES

Aerial Overall Site



Google Earth

© 2018 Google



SOUTH FLORIDA WATER MANAGEMENT DISTRICT

Rev. 1/16



Looking West (Oblique not to scale) (July 28, 2018)

No Tag found at this well site



Top View (Not to Scale) (July 28, 2018)

SEC 3 TWP 26 RGE 28

ESTABLISH ELEV ON NEW WELL OSF-99

STA	+	HI	-	ELEV	BM EL
BM	4.94	72.62			67.68 NAVD 88
BM			4.85	67.77	
REF "X"			1.84	70.78	70.78
NE CONC		4.59		68.03	
SE "		4.56		68.06	
SW "		4.54		68.08	
NW "		4.56		68.06	
NE GRND		5.1		67.52	
SE "		4.7		67.92	
SW "		4.9		67.72	
NW "		5.0		67.62	

* NOTE: USED ELEV 67.68 NAVD 88 FROM ALEXIS SCHAUER & PICKETT SURVEY JULY 28, 2018 SEE REF

* THE SFWMD VERTICAL CONTROL DATA SHEET STATES NAVD 88 ELEV = 67.51

CONT'D NEXT PAGE

WIND LEVEL

STRICKLAND

* REF: CFWI DMIT WETLAND INTERCESSION CITY; CAD FILE # 18679 DWG LD6377 SHEETS 1-2 7-28-18

COMMENTS

BM OSF WELL BM1 2003 FID 3" DIA BRASS DISK GOOD COND

BM IC - TPW 2019 FID SFWMD ALUM CAP IN THE NE CORNER of 4'x4' CONC PAD of SS WELL SITE IC-SAS WELL THAT IS LABELED "IC-SAS" WITH SHARPIE IS ACTUALLY WELL "IC-TPW"

REF "X" LOCATED @ SSW SIDE of 10" PVC PIPE OSF-99

NE CORNER CONC PAD 4'x4'

SE " " " "

SW " " " "

NW " " " "

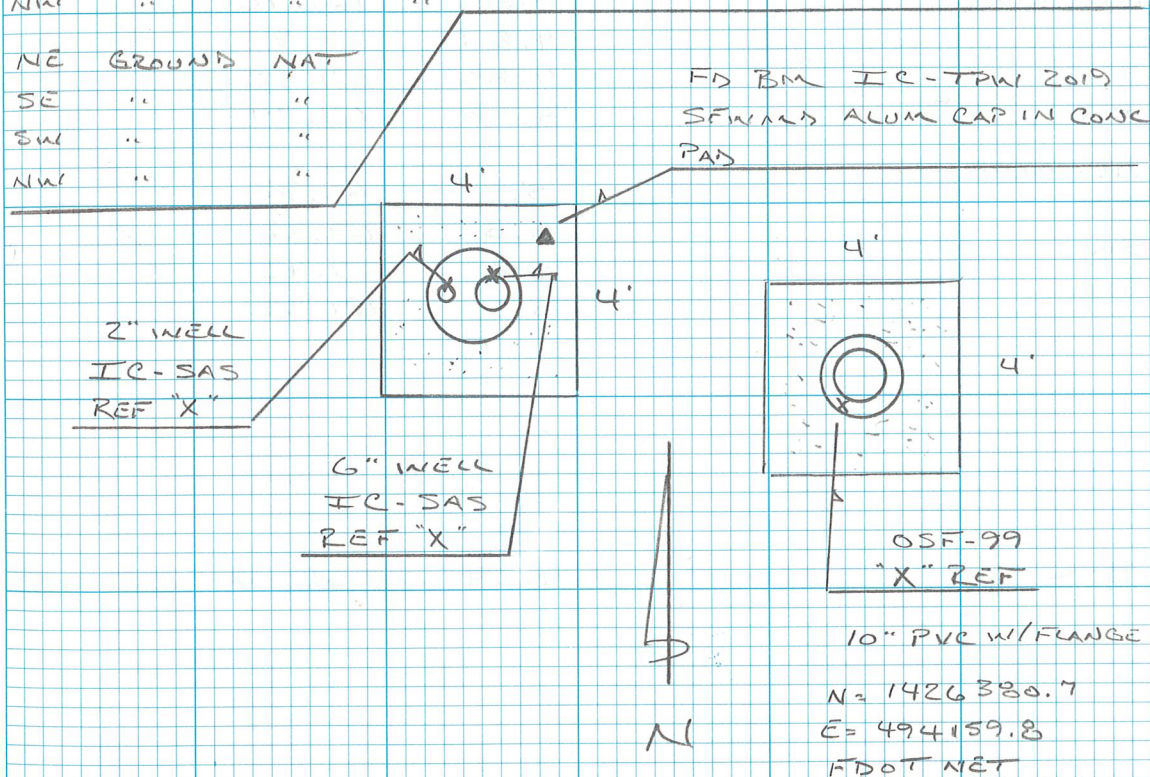
NE GROUND NAT

SE " " " "

SW " " " "

NW " " " "

FID BM IC-TPW 2019 SFWMD ALUM CAP IN CONC PAD



SEC 3 TWP 26 RGE 28

CONT'D FROM PG-58

ESTABLISH ELEV ON SS WELL IC-SAS

STA	+	HI	-	ELEV	BM EL
		72.62			

REF "X"		3.21		69.41	69.41
6" SS					

REF "X"		3.35		69.27	69.27
2" SS					

NE CONC		4.86		67.76	
SE		4.87		67.75	
SW		4.86		67.76	
NW		4.88		67.74	

NE BRNS		5.3		67.32	
SE		5.3		67.32	
SW		5.2		67.42	
NW		5.3		67.32	

BM		4.94		67.68	67.68
----	--	------	--	-------	-------

N III STRICKLAND
N WISE

COMMENTS

REF "X" LOCATED @ N. LIP of 6" SS COUPLER IC-SAS WELL ON 18" DIA SS FLANGE WELL THAT IS LABELED "IC-SAS" WITH SHARPIE IS ACTUALLY WELL "IC-TPW"

REF "X" LOCATED @ N. LIP of 2" SS COUPLER IC-SAS WELL ON 18" DIA SS FLANGE WELL THAT IS LABELED "IC-SAS" WITH SHARPIE IS ACTUALLY WELL "IC-TPW"

NE CORNER CONC PAD	4'x4'
SE	"
SW	"
NW	"

NE BRNS	NAT
SE	"
SW	"
NW	"

BM OSF WELL BM 1 2003 PG-58