



PB 710		Elevation:	11.83 ft	(NAVD 88)	13.34 ft	(NGVD 29)
Bench Mark 1:	J 305		15.90 ft	(NAVD 88)	17.42 ft	(NGVD 29)
Bench Mark 2:	H 305		20.89 ft	(NAVD 88)	22.41 ft	(NGVD 29)
Monitoring Well:	PB 710		14.92 ft	(NAVD 88)	16.43 ft	(NGVD 29)
Length of Run:	2.57 km		To Reach PB 710: FROM US HWY 1 & A1A/JUNO ISLES BLVD. JUNCTION, GO NORTH ON A1A FOR 0.55 MILES TO SUNSET WAY. CONCRETE MONUMENT WILL BE ON RIGHT 6.0' EAST OF EDGE OF PAVEMENT OF OCEAN DRIVE, 22.5' EAST OF CENTERLINE OCEAN DRIVE, 23' SOUTH OF PALM TREE WITH PK NAIL AND DISK (LB 4318), 8.5' NORTH OF PALM TREE WITH PK NAIL AND DISK (LB 4318). MAGNET SET 1' NORTH OF CONCRETE MONUMENT.			
Max Allowable Misclosure:	13 mm					
Actual Misclosure:	2 mm					
						

PB 715		Elevation:	23.19 ft	(NAVD 88)	24.64 ft	(NGVD 29)
Bench Mark 1:	X 537		23.29 ft	(NAVD 88)	24.74 ft	(NGVD 29)
Bench Mark 2:	W 537		21.14 ft	(NAVD 88)	22.59 ft	(NGVD 29)
Monitoring Well:	PB 715		23.34 ft	(NAVD 88)	24.79 ft	(NGVD 29)
Length of Run:	1.58 km		To Reach PB 715: FROM INTERSECTION NORTHLAKE BLVD. & SEMINOLE PRATT WHITNEY. GO NORTH ON SEMINOLE PRATT WHITNEY ROAD R 2.8 MILES TO MARK ON LEFT. 17.55' NORTH OF NORTHEAST COR OF PLATFORM PC19 CULVERT, 14.9' SOUTH OF END OF GUARDRAIL AROUND SMALL POND, 13.5' WEST OF CENTERLINE DIRT ROAD, AND 65.35' SOUTHWEST OF MONITORING WELL PB715. SET MAGNET 1' NORTH OF CONCRETE MONUMENT.			
Max Allowable Misclosure:	10 mm					
Actual Misclosure:	0 mm					
						

PB-710



**Nick Miller, Inc.
Date of Photo: May 12, 2005
View: Looking at the well PB-710 facing west**

PB-710



Nick Miller, Inc.
Date of Photo: May 12, 2005
View: Close-up of the well PB-710 showing the contractor's markings

PB-710



Nick Miller, Inc.
Date of Photo: May 12, 2005
View: Looking at the benchmark facing east

PB-710



Nick Miller, Inc.
Date of Photo: May 12, 2005
View: A top view of the benchmark

1078

SFWMTD

SET CONC. MONUMENT
AT WELL SITE ~~PB 596~~ PB 710

PB 710

- SET POURED - IN - PLACE CONC. MONUMENT
- SET MAGNET 1' NORTH OF CONC. MON.

- SET CONC. MON. 6.0' EAST OF EDGE OF PAVEMENT ^{OCEAN DRIVE}
- " " " 22.5' EAST OF ϕ OCEAN DRIVE
- " " " 23' SOUTH OF PALM TREE w/ ^{PK NAIL & DISK} LB 4318
- " " " 8.5' NORTH OF PALM TREE w/ ^{PK NAIL & DISK} LB 4318

~~STAMPED~~

STAMPED PB 710
2005

COORDINATES ON CONC. MONUMENT

STATE PLANE 83

N. 281461.063

E. 294133.055

WGS 84

N. 26° 52' 15." 52765

E. 080° 03' 09." 54214

COORDINATES ON MONITORING WELL PB 710

STATE PLANE 83

N. 281467.057

E. 294094.390

WGS 84

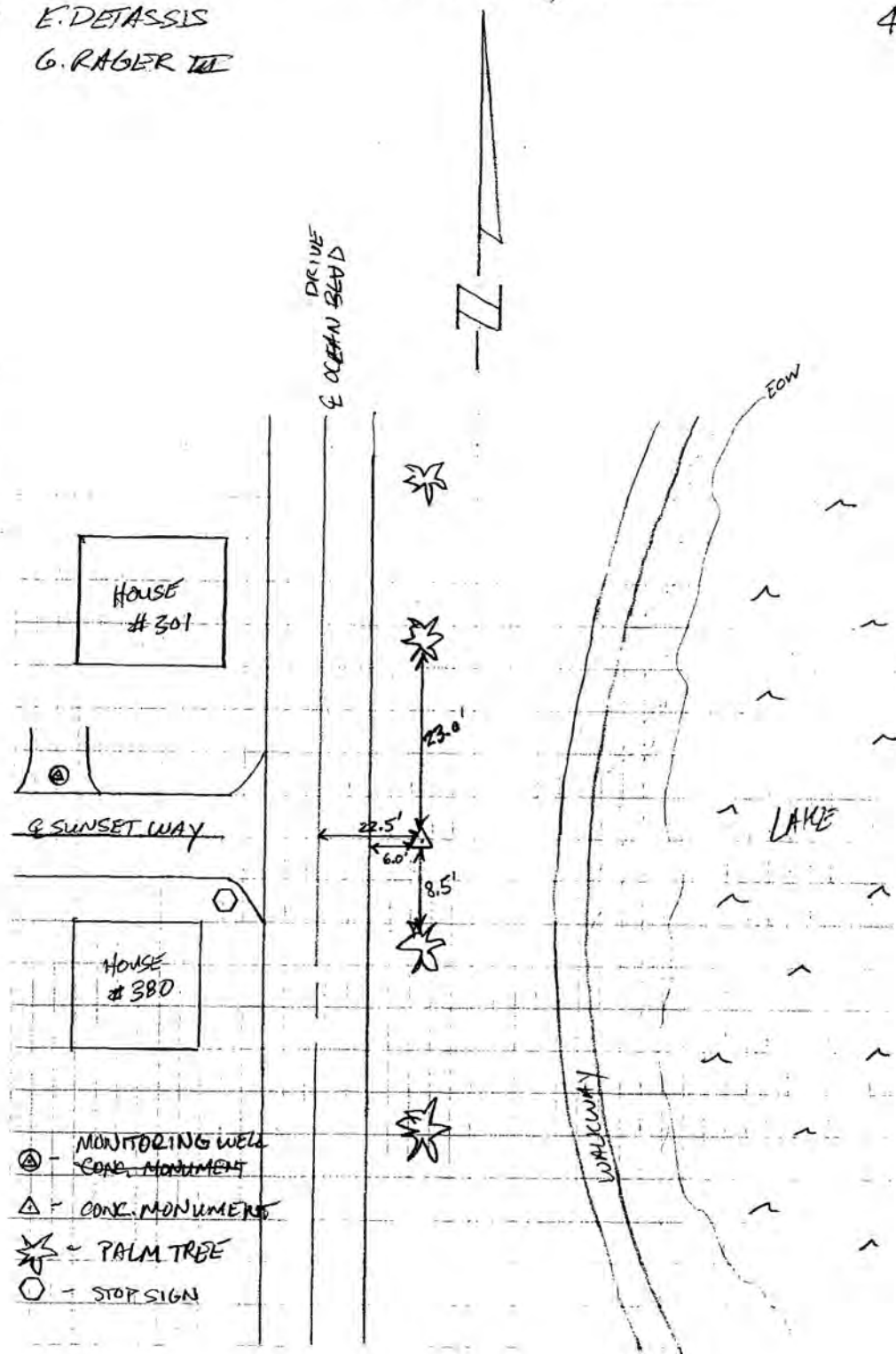
N. 26° 52' 15." 73903

E. 080° 03' 10." 93177

E. DETASSIS
G. RAGER III

THRU. MAY 12, 2005

4-58





SOUTH FLORIDA WATER MANAGEMENT DISTRICT

Rev. 4/01

COUNTY PALM BEACH	PROJECT Hydrology – Palm Beach County Wells	DESIGNATION PB 710 2005
SECTION 28	TOWNSHIP 41 SOUTH	RANGE 43 EAST
GEOGRAPHIC INDEX OF QUAD		
Established by <u>Nick Miller Inc.</u> Recovered by	NAME OF QUADRANGLE Riviera Beach	
SURVEYOR <u>Stephen M. Gordon</u> DATE <u>5/12/2005</u>	FIELD BOOK <u>4</u> PAGE <u>58</u>	
HORIZONTAL DATUM: 1927 <input checked="" type="radio"/> 1983 Other _____ (circle one) ZONE <input checked="" type="radio"/> E or W		
STATE PLANE COORDINATES	E 965,003 ft	N 923,428 ft
LATITUDE: N 26.87098°	LONGITUDE: W 80.05265°	
VERTICAL DATUM: MSL 1929 <input checked="" type="radio"/> 1988 Other _____ (circle one)	EL. 11.83 ft	
VERTICAL DATUM: MSL <input checked="" type="radio"/> 1929 1988 Other _____ (circle one)	EL. 13.35 ft	
CONTROL ACCURACY: HORIZONTAL 1 2 3 <input checked="" type="radio"/> SUB-METER (circle one) VERTICAL 1 2 <input checked="" type="radio"/> 3		
DESCRIPTION		
<p>To Reach:</p> <p>FROM US HWY 1 & A1A/JUNO ISLES BLVD. JUNCTION, GO NORTH ON A1A FOR 0.55 MILES TO SUNSET WAY. CONCRETE MONUMENT WILL BE ON RIGHT 6.0 FEET EAST OF EDGE OF PAVEMENT OF OCEAN DRIVE, 22.5 FEET EAST OF CENTERLINE OCEAN DRIVE, 23 FEET SOUTH OF PALM TREE WITH PK NAIL AND DISK (LB 4318), 8.5 FEET NORTH OF PALM TREE WITH PK NAIL AND DISK (LB 4318). MAGNET SET 1 FOOT NORTH OF CONCRETE MONUMENT.</p> <p>Benchmarks Used: J 305 and H 305</p> <p>Notable Land marks:</p>		



SOUTH FLORIDA WATER MANAGEMENT DISTRICT

Rev. 4/01

SKETCH

1078

SFWMD

E. DETASSIS
G. RAGER III

THRU. MAY 12, 2005

4-58

SET CONC. MONUMENT
AT WELL SITE ~~PB 576~~ PB 710

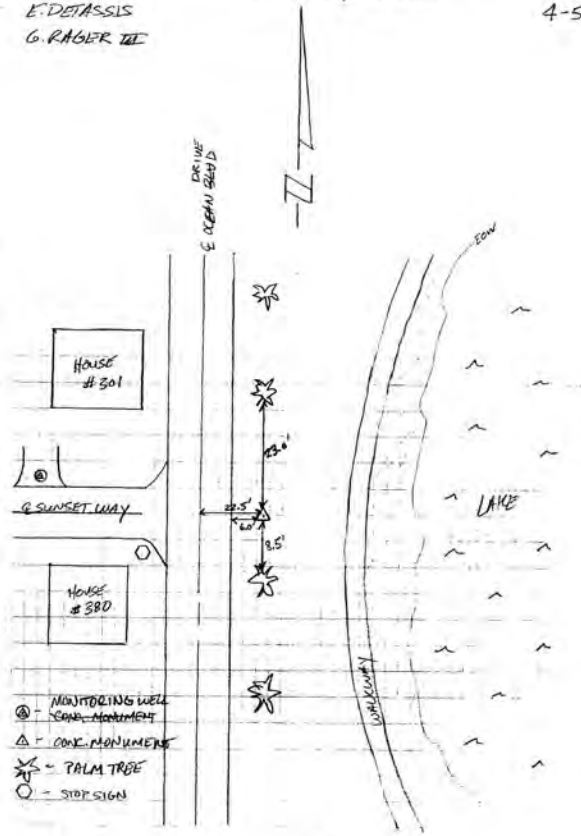
PB 710

- SET POURED - IN - PLACE CONC. MONUMENT
- SET MAGNET 1' NORTH OF CONC. MON.
- SET CONC. MON. 6.0' EAST OF EDGE OF PAVEMENT ^{ORLANDO} DRIVE
- " " " 22.5' EAST OF E OCEAN DRIVE
- " " " 23' SOUTH OF PALM TREE w/ LE 4318 ^{PALM TREE}
- " " " 8.5' NORTH OF PALM TREE w/ LE 4318 ^{PALM TREE}

STAMPED
STAMPED PB 710
2005

COORDINATES ON CONC. MONUMENT	
STATE PLANE 83	WGS 84
N. 281461.063	N. 26° 52' 15.82765
E. 294132.055	W. 080° 03' 09.34214

COORDINATES ON MONITORING WELL PB 710	
STATE PLANE 83	WGS 84
N. 281467.057	N. 26° 52' 15.72903
E. 294094.330	W. 080° 03' 10.93177



- ⊗ - MONITORING WELL
- △ - CONC. MONUMENT
- ★ - PALM TREE
- - STOP SIGN

PB-715



Nick Miller, Inc.

Date of Photo: May 23, 2005

View: Looking at the well PB-715 (west well) facing north

PB-715



Nick Miller, Inc.
Date of Photo: May 23, 2005
View: Close-up of the well PB-715 showing the contractor's markings

PB-715



Nick Miller, Inc.

Date of Photo: May 23, 2005

View: Looking at the benchmark facing south

PB-715



Nick Miller, Inc.
Date of Photo: May 23, 2005
View: A top view of the benchmark

1078

SFWMD

SET CONC. MONUMENT AT THE
SITE ~~END~~ OF MONITORING WELL PB 715

PB 715

- SET POURED-IN-PLACE CONC. MONUMENT
- SET MAGNET 1' NORTH OF CONC. MON.
- SET CONC. MON. 17.56' NORTH OF ^{NE} ~~NO~~ COR OF PLATFORM ^{PC 19} CULVERT
- " " " 14.9' SOUTH OF END OF GUARDRAIL AROUND ^{SMALL} POND
- " " " 13.5' WEST OF E DIRT ROAD
- " " " 65.35' SW OF M.W. PB 715

STAMPED PB 715
2005

COORDINATES ON CONC. MON.

STATE PLANE 83	WGS 84
N. 279451.195 m	N. 26° 51' 15.27218"
E. 270382.423 m	W. 80° 17' 30.38899"

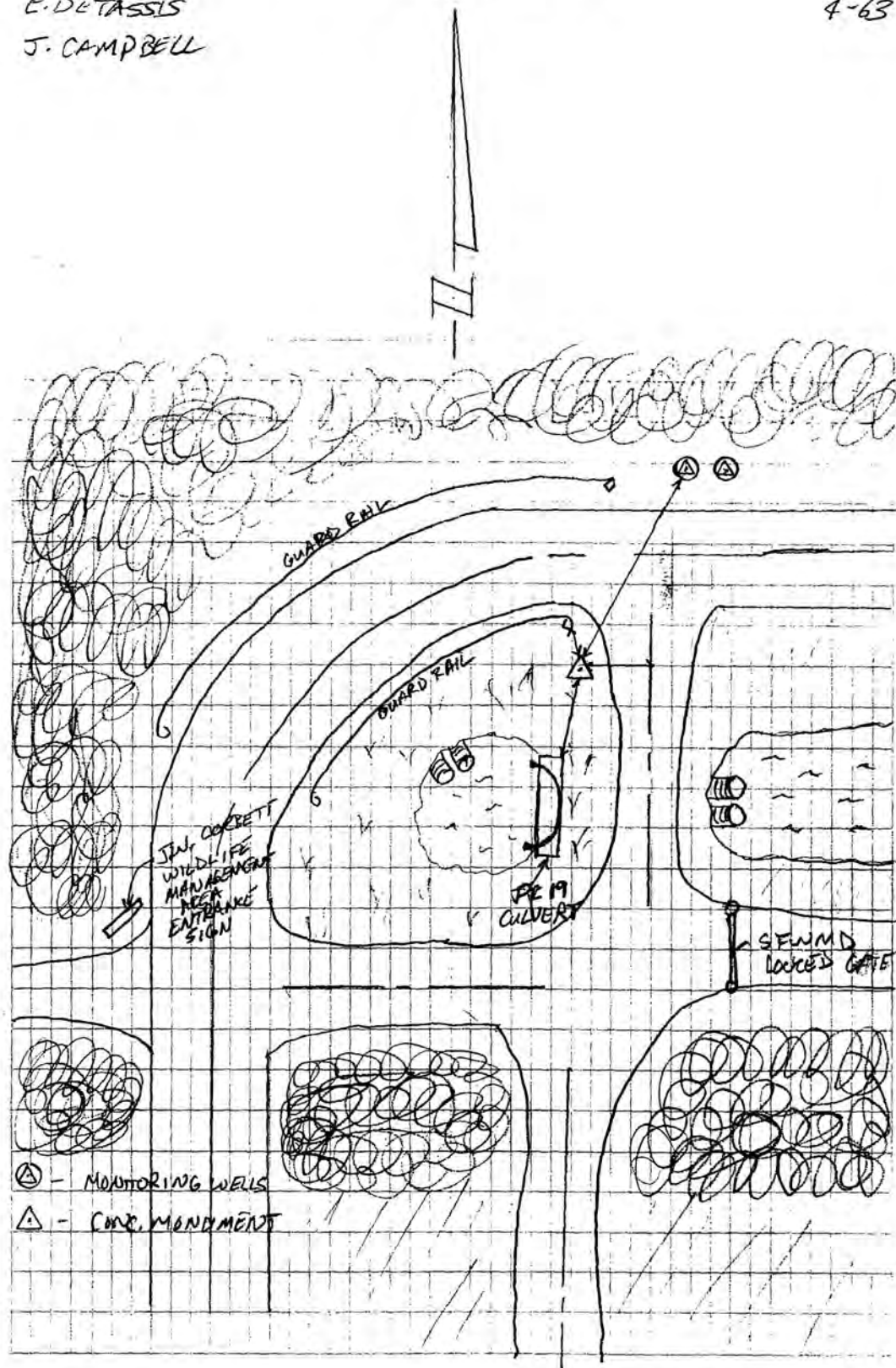
COORDINATES ON MON. WELL PB 715

STATE PLANE 83	WGS 84
N. 279470.862 m	N. 26° 51' 15.86636"
E. 270389.816 m	W. 80° 17' 30.15674"

MON. MAY 23, 2005

E. DETASSIS
J. CAMPBELL

4-63





SOUTH FLORIDA WATER MANAGEMENT DISTRICT

Rev. 4/01

COUNTY	PALM BEACH	PROJECT	Hydrology – Palm Beach County Wells	DESIGNATION	PB 715 2005
SECTION	36	TOWNSHIP	41 SOUTH	RANGE	40 EAST
GEOGRAPHIC INDEX OF QUAD					
Established by <u>Nick Miller Inc.</u> Recovered by			NAME OF QUADRANGLE West of Delta		
SURVEYOR <u>Stephen M. Gordon</u> DATE <u>5/23/2005</u>			FIELD BOOK <u>4</u> PAGE <u>63</u>		
HORIZONTAL DATUM: 1927 <input checked="" type="radio"/> 1983 Other _____ (circle one) ZONE <input checked="" type="radio"/> E or W					
STATE PLANE COORDINATES		E 887,081 ft		N 916,834 ft	
LATITUDE: N 26.85424°		LONGITUDE: W 80.29177°			
VERTICAL DATUM: MSL 1929 <input checked="" type="radio"/> 1988 Other _____ (circle one)				EL. 23.19 ft	
VERTICAL DATUM: MSL <input checked="" type="radio"/> 1929 1988 Other _____ (circle one)				EL. 24.64 ft	
CONTROL ACCURACY: HORIZONTAL 1 2 3 <input checked="" type="radio"/> SUB-METER (circle one) VERTICAL 1 2 <input checked="" type="radio"/> 3					
DESCRIPTION					
To Reach:					
FROM INTERSECTION NORTHLAKE BLVD. & SEMINOLE PRATT WHITNEY. GO NORTH ON SEMINOLE PRATT WHITNEY ROAD R 2.8 MILES TO MARK ON LEFT. 17.55 FEET NORTH OF NORTHEAST CORNER OF PLATFORM PC19 CULVERT, 14.9 FEET SOUTH OF END OF GUARDRAIL AROUND SMALL POND, 13.5 FEET WEST OF CENTERLINE DIRT ROAD, AND 65.35 FEET SOUTHWEST OF MONITORING WELL PB715. SET MAGNET 1 FOOT NORTH OF CONCRETE MONUMENT.					
Benchmarks Used: X 537 and W 537					
Notable Land marks:					



SOUTH FLORIDA WATER MANAGEMENT DISTRICT

Rev. 4/01

SKETCH

1078 SFWMD

SET CONC. MONUMENT AT THE
SITE OF MONITORING WELL PB 715.

PB 715

- SET POURED-IN-PLACE CONC. MONUMENT
- SET MAGNET 1' NORTH OF CONC. MON.
- SET CONC. MON. 17.56' ^{NE} NORTH OF ^{PC 19} END OF PLATFORM CURVE
- " " " 14.9' SOUTH OF END OF GUARD RAIL ^{SMALL} AROUND POND
- " " " 13.5' WEST OF ^{DIRTY} ROAD
- " " " 65.35' SW OF ^{MIN.} MON. PB 715

STAMPED PB 715
2005

COORDINATES ON CONC. MON.

STATE PLANE 83	WGS 84
N. 279451.195 m	N. 26° 51' 15.27218"
E. 270382.423 m	W. 80° 17' 30.38899"

COORDINATES ON MON. WELL PB 715

STATE PLANE 83	WGS 84
N. 279470.862 m	N. 26° 51' 15.86636"
E. 270369.816 m	W. 80° 17' 30.15679"

MON. MAY 23, 2005

E. DETASSIS
J. CAMPBELL

4-63

SKETCH DESCRIPTION: The sketch shows a site layout with a north arrow pointing upwards. A curved line represents a 'GUARD RAIL' and 'PLATFORM CURVE'. A 'DIRTY ROAD' is shown below the curve. A 'MONITORING WELL' (PB 715) is marked with a circle containing a cross. A 'CONC. MONUMENT' is marked with a triangle. A 'SMALL AROUND POND' is indicated near the guard rail. A 'SEWERS LOOKED OFF' is shown on the right. A legend at the bottom identifies the symbols: a circle with a cross for 'MONITORING WELLS' and a triangle for 'CONC. MONUMENT'.

-*- FIELD ABSTRACT -*-
 050606-050606 HGZ L26803 8.0 MM ORDER 2 CLASS 2 PAGE 1
 SOUTH FLORIDA WATER MANAGEMENT DISTRICT
 PALM BEACH COUNTY MONITORING WELLS
 ESTABLISH BENCH MARK NEAR MONITORING MELL PB 715

FROM	TO	START	F/B	DIST TOTAL (KM)	ELEV DIFF (MT)	-(F+B) TOTAL (MM)	MEAN DIFF FLD ELEV (MT)	I C
0225 X 537							7.10000	
0225 X 537		6060845	F	0.79	-0.03309 *	0.00	-0.03309	1
0226 PB 715				0.79		0.00	7.06691	
0226 PB 715		6060940	F	0.79	-0.62452 *	0.13	-0.62446	1
0227 W 537		6061055	B	0.79	0.62439 *			1
				1.58		0.13	6.44245♀	

ELEVATION REJECTION AND ERROR CODES

- C - section elevation difference was rejected for cause
 ie. *43* record rejection code set to "F"
- R - section elevation difference was rejected by Halperin rejection algorithm
- @ - section elevation difference does not include refraction correction
- * - section elevation difference does not include rod correction

♀

INSTRUMENT CODE	INSTRUMENT	RODS
1	243 - 331132	396 - 111 396 - 222

♀
 LEVEL LINE SECTION RUNNING TREE

FROM	TO	N. LATITUDE	W. LONGITUDE	FIELD DISTANCE	VS. COMPUTED
0225		265115	0801701	0.00	0.00
0225	0226	265115	0801730	0.79	0.80
0226	0227♀	265049	0801731	0.79	0.80♀

SECTION
 FROM TO ERROR MESSAGES

The NGS Data Sheet

See file [dsdata.txt](#) for more information about the datasheet.

```

DATABASE = Sybase ,PROGRAM = datasheet, VERSION = 7.23
1 National Geodetic Survey, Retrieval Date = AUGUST 31, 2005
AJ8781 *****
AJ8781 DESIGNATION - X 537
AJ8781 PID - AJ8781
AJ8781 STATE/COUNTY- FL/PALM BEACH
AJ8781 USGS QUAD - WEST OF DELTA (1984)
AJ8781
AJ8781 *CURRENT SURVEY CONTROL
AJ8781
AJ8781* NAD 83(1999)- 26 51 15.91306(N) 080 17 01.68394(W) ADJUSTED
AJ8781* NAVD 88 - 7.100 (meters) 23.29 (feet) ADJUSTED
AJ8781
AJ8781 X - 960,994.675 (meters) COMP
AJ8781 Y - -5,612,495.613 (meters) COMP
AJ8781 Z - 2,863,825.157 (meters) COMP
AJ8781 LAPLACE CORR- -2.65 (seconds) DEFLEC99
AJ8781 ELLIP HEIGHT- -19.22 (meters) (12/12/02) GPS OBS
AJ8781 GEOID HEIGHT- -26.35 (meters) GEOID03
AJ8781 DYNAMIC HT - 7.089 (meters) 23.26 (feet) COMP
AJ8781 MODELED GRAV- 979,107.9 (mgal) NAVD 88
AJ8781
AJ8781 HORZ ORDER - FIRST
AJ8781 VERT ORDER - FIRST CLASS II
AJ8781 ELLP ORDER - THIRD CLASS I
AJ8781
AJ8781.The horizontal coordinates were established by GPS observations
AJ8781.and adjusted by the National Geodetic Survey in December 2002.
AJ8781
AJ8781.The orthometric height was determined by differential leveling
AJ8781.and adjusted by the National Geodetic Survey in May 2002.
AJ8781
AJ8781.The X, Y, and Z were computed from the position and the ellipsoidal ht.
AJ8781
AJ8781.The Laplace correction was computed from DEFLEC99 derived deflections.
AJ8781
AJ8781.The ellipsoidal height was determined by GPS observations
AJ8781.and is referenced to NAD 83.
AJ8781
AJ8781.The geoid height was determined by GEOID03.
AJ8781
AJ8781.The dynamic height is computed by dividing the NAVD 88
AJ8781.geopotential number by the normal gravity value computed on the
AJ8781.Geodetic Reference System of 1980 (GRS 80) ellipsoid at 45
AJ8781.degrees latitude (g = 980.6199 gals.).
AJ8781
AJ8781.The modeled gravity was interpolated from observed gravity values.
AJ8781
AJ8781; North East Units Scale Factor Converg.
AJ8781;SPC FL E - 279,475.376 271,174.473 MT 1.00000369 +0 19 24.7
AJ8781;UTM 17 - 2,970,512.002 571,150.188 MT 0.99966249 +0 19 24.7
AJ8781
AJ8781! Elev Factor x Scale Factor = Combined Factor
AJ8781!SPC FL E - 1.00000302 x 1.00000369 = 1.00000671
AJ8781!UTM 17 - 1.00000302 x 0.99966249 = 0.99966551
AJ8781
AJ8781 SUPERSEDED SURVEY CONTROL
AJ8781
AJ8781 NAVD 88 (12/12/02) 7.10 (m) 23.3 (f) LEVELING 3
AJ8781
AJ8781.Superseded values are not recommended for survey control.
AJ8781.NGS no longer adjusts projects to the NAD 27 or NGVD 29 datums.
AJ8781.See file dsdata.txt to determine how the superseded data were derived.
AJ8781
AJ8781_U.S. NATIONAL GRID SPATIAL ADDRESS: 17RNK7115070512(NAD 83)
AJ8781_MARKER: DD = SURVEY DISK
AJ8781_SETTING: 7 = SET IN TOP OF CONCRETE MONUMENT
AJ8781_STAMPING: X 537 2001 CERP
AJ8781_MARK LOGO: USE

```

AJ8781_PROJECTION: RECESSED 8 CENTIMETERS
 AJ8781_MAGNETIC: O = OTHER; SEE DESCRIPTION
 AJ8781_STABILITY: C = MAY HOLD, BUT OF TYPE COMMONLY SUBJECT TO
 AJ8781+STABILITY: SURFACE MOTION
 AJ8781_SATELLITE: THE SITE LOCATION WAS REPORTED AS SUITABLE FOR
 AJ8781+SATELLITE: SATELLITE OBSERVATIONS - January 29, 2004

AJ8781	HISTORY	- Date	Condition	Report By
AJ8781	HISTORY	- 20010925	MONUMENTED	MOREKL
AJ8781	HISTORY	- 20020420	GOOD	MAPTEC
AJ8781	HISTORY	- 20040129	GOOD	USPSQD

AJ8781
 AJ8781 STATION DESCRIPTION

AJ8781'DESCRIBED BY MORGAN AND EKLUND INC 2001 (MAB)
 AJ8781'THE STATION IS LOCATED ABOUT 26.8 KM (16.7 MILES) NORTHWEST OF THE
 AJ8781'PALM BEACH
 AJ8781'INTERNATIONAL AIRPORT, ABOUT 23.7 KM (14.7 MILES) WEST NORTHWEST OF
 AJ8781'RIVIERA BEACH, ABOUT
 AJ8781'7.8 KM (4.9 MILES) SOUTH SOUTHEAST OF THE PALM BEACH RACEWAY IN
 AJ8781'SECTION 31, TOWNSHIP 41
 AJ8781'SOUTH, RANGE 41 EAST.
 AJ8781'
 AJ8781'OWNERSHIP SOUTH FLORIDA WATER MANAGEMENT DISTRICT.
 AJ8781'
 AJ8781'TO REACH THE STATION FROM THE INTERSECTION OF STATE ROAD 76 AND STATE
 AJ8781'ROAD 710 ON THE
 AJ8781'BRIDGE OVER STATE ROAD 76 AND THE ST. LUCIE CANAL, GO EAST ON STATE
 AJ8781'ROAD 710 FOR 26.1 KM
 AJ8781'(16.2 MILES) TO THE WEST SIDE OF A BRIDGE OVER HUNGRYLAND SLOUGH
 AJ8781'CANAL, TURN RIGHT AND
 AJ8781'GO SOUTH ALONG THE DIRT ROAD ON THE WEST SIDE OF THE CANAL, CROSSING
 AJ8781'OVER RAILROAD
 AJ8781'TRACKS AND PASSING THROUGH ACCESS GATE FOR 4.5 KM (2.8 MILES) AND THE
 AJ8781'MARK ON THE RIGHT.
 AJ8781'
 AJ8781'THE MARK IS 22.7 METERS (74.5 FEET) NORTH OF THE NORTH TOP OF BANK OF
 AJ8781'HUNGRYLAND SLOUGH
 AJ8781'CANAL, 19.7 METERS (64.6 FEET) EAST OF THE CENTERLINE OF A DIRT ROAD
 AJ8781'LEADING NORTH, 6.5
 AJ8781'METERS (21.3 FEET) WEST SOUTHWEST OF A 14 INCH PINE TREE AND 1.2
 AJ8781'METERS (3.8 FEET) SOUTH OF
 AJ8781'A CARSONITE WITNESS POST.
 AJ8781'
 AJ8781'NOTE A MAGNET WAS PLACED 0.21 METERS (0.7 FEET) SOUTH OF AND 0.1
 AJ8781'METERS (0.3 FEET) BELOW
 AJ8781' THE MARK.

AJ8781'
 AJ8781'
 AJ8781'
 AJ8781'
 AJ8781'
 AJ8781' STATION RECOVERY (2002)

AJ8781'
 AJ8781'RECOVERY NOTE BY MAPTECH INCORPORATED 2002 (CDP)
 AJ8781'THE STATION IS LOCATED ABOUT 26.8 KM (16.7 MILES) NORTHWEST OF THE
 AJ8781'PALM BEACH
 AJ8781'INTERNATIONAL AIRPORT, ABOUT 23.7 KM (14.7 MILES) WEST NORTHWEST OF
 AJ8781'RIVIERA BEACH, ABOUT
 AJ8781'7.8 KM (4.9 MILES) SOUTH SOUTHEAST OF THE PALM BEACH RACEWAY IN
 AJ8781'SECTION 31, TOWNSHIP 41
 AJ8781'SOUTH, RANGE 41 EAST.
 AJ8781'
 AJ8781'OWNERSHIP SOUTH FLORIDA WATER MANAGEMENT DISTRICT.
 AJ8781'
 AJ8781'TO REACH THE STATION FROM THE INTERSECTION OF STATE ROAD 76 AND STATE
 AJ8781'ROAD 710 ON THE
 AJ8781'BRIDGE OVER STATE ROAD 76 AND THE ST. LUCIE CANAL, GO EAST ON STATE
 AJ8781'ROAD 710 FOR 26.1 KM
 AJ8781'(16.2 MILES) TO THE WEST SIDE OF A BRIDGE OVER HUNGRYLAND SLOUGH
 AJ8781'CANAL, TURN RIGHT AND
 AJ8781'GO SOUTH ALONG THE DIRT ROAD ON THE WEST SIDE OF THE CANAL, CROSSING
 AJ8781'OVER RAILROAD
 AJ8781'TRACKS AND PASSING THROUGH ACCESS GATE FOR 4.5 KM (2.8 MILES) AND THE
 AJ8781'MARK ON THE RIGHT.
 AJ8781'
 AJ8781'THE MARK IS 22.7 METERS (74.5 FEET) NORTH OF THE NORTH TOP OF BANK OF
 AJ8781'HUNGRYLAND SLOUGH
 AJ8781'CANAL, 19.7 METERS (64.6 FEET) EAST OF THE CENTERLINE OF A DIRT ROAD
 AJ8781'LEADING NORTH, 6.5
 AJ8781'METERS (21.3 FEET) WEST SOUTHWEST OF A 14 INCH PINE TREE AND 1.2
 AJ8781'METERS (3.8 FEET) SOUTH OF

DATASHEETS

AJ8781 'A CARSONITE WITNESS POST.

AJ8781 '

AJ8781 'NOTE A MAGNET WAS PLACED 0.21 METERS (0.7 FEET) SOUTH OF AND 0.1

AJ8781 'METERS (0.3 FEET) BELOW

AJ8781 ' THE MARK.

AJ8781 '

AJ8781 'STATION RECOVERY (2002)

AJ8781 'RECOVERY NOTE BY MAPTECH, INCORPORATED 2002 (CDP)

AJ8781 'RECOVERED AS DESCRIBED.

AJ8781 '

AJ8781 '

AJ8781 '

AJ8781

AJ8781

STATION RECOVERY (2004)

AJ8781

AJ8781 'RECOVERY NOTE BY US POWER SQUADRON 2004 (AEP)

AJ8781 'RECOVERED IN GOOD CONDITION.

*** retrieval complete.

Elapsed Time = 00:00:00

The NGS Data Sheet

See file [dsdata.txt](#) for more information about the datasheet.

DATABASE = Sybase ,PROGRAM = datasheet, VERSION = 7.23

1 National Geodetic Survey, Retrieval Date = AUGUST 31, 2005

AJ8780 *****

AJ8780 DESIGNATION - W 537
 AJ8780 PID - AJ8780
 AJ8780 STATE/COUNTY- FL/PALM BEACH
 AJ8780 USGS QUAD - WEST OF DELTA (1984)
 AJ8780
 AJ8780 *CURRENT SURVEY CONTROL
 AJ8780
 AJ8780 * NAD 83(1999)- 26 50 49.90315(N) 080 17 31.24887(W) ADJUSTED
 AJ8780 * NAVD 88 - 6.442 (meters) 21.14 (feet) ADJUSTED
 AJ8780
 AJ8780 X - 960,251.077 (meters) COMP
 AJ8780 Y - -5,612,989.153 (meters) COMP
 AJ8780 Z - 2,863,110.652 (meters) COMP
 AJ8780 LAPLACE CORR- -2.59 (seconds) DEFLEC99
 AJ8780 ELLIP HEIGHT- -19.84 (meters) (12/12/02) GPS OBS
 AJ8780 GEOID HEIGHT- -26.30 (meters) GEOID03
 AJ8780 DYNAMIC HT - 6.432 (meters) 21.10 (feet) COMP
 AJ8780 MODELED GRAV- 979,108.1 (mgal) NAVD 88

AJ8780
 AJ8780 HORZ ORDER - FIRST
 AJ8780 VERT ORDER - FIRST CLASS II
 AJ8780 ELLP ORDER - THIRD CLASS I

AJ8780.The horizontal coordinates were established by GPS observations
 AJ8780.and adjusted by the National Geodetic Survey in December 2002.

AJ8780.The orthometric height was determined by differential leveling
 AJ8780.and adjusted by the National Geodetic Survey in May 2002.

AJ8780.The X, Y, and Z were computed from the position and the ellipsoidal ht.

AJ8780.The Laplace correction was computed from DEFLEC99 derived deflections.

AJ8780.The ellipsoidal height was determined by GPS observations
 AJ8780.and is referenced to NAD 83.

AJ8780.The geoid height was determined by GEOID03.

AJ8780.The dynamic height is computed by dividing the NAVD 88
 AJ8780.geopotential number by the normal gravity value computed on the
 AJ8780.Geodetic Reference System of 1980 (GRS 80) ellipsoid at 45
 AJ8780.degrees latitude (g = 980.6199 gals.).

AJ8780.The modeled gravity was interpolated from observed gravity values.

AJ8780;

	North	East	Units	Scale	Factor	Converg.
AJ8780;SPC FL E	- 278,670.269	270,362.775	MT	1.00000227		+0 19 11.1
AJ8780;UTM 17	- 2,969,707.169	570,338.768	MT	0.99966108		+0 19 11.1

AJ8780!
 AJ8780!SPC FL E - Elev Factor x Scale Factor = Combined Factor
 AJ8780!SPC FL E - 1.00000312 x 1.00000227 = 1.00000539
 AJ8780!UTM 17 - 1.00000312 x 0.99966108 = 0.99966420

AJ8780
 AJ8780 SUPERSEDED SURVEY CONTROL

AJ8780 NAVD 88 (12/12/02) 6.44 (m) 21.1 (f) LEVELING 3

AJ8780
 AJ8780.Superseded values are not recommended for survey control.
 AJ8780.NGS no longer adjusts projects to the NAD 27 or NGVD 29 datums.
 AJ8780.[See file dsdata.txt](#) to determine how the superseded data were derived.

AJ8780
 AJ8780_U.S. NATIONAL GRID SPATIAL ADDRESS: 17RNK7033969707(NAD 83)
 AJ8780_MARKER: F = FLANGE-ENCASED ROD
 AJ8780_SETTING: 49 = STAINLESS STEEL ROD W/O SLEEVE (10 FT.)
 AJ8780_STAMPING: W 537 CERP 2001
 AJ8780_MARK LOGO: NONE

AJ8780_PROJECTION: RECESSED 13 CENTIMETERS
 AJ8780_MAGNETIC: O = OTHER; SEE DESCRIPTION
 AJ8780_STABILITY: B = PROBABLY HOLD POSITION/ELEVATION WELL
 AJ8780_SATELLITE: THE SITE LOCATION WAS REPORTED AS SUITABLE FOR
 AJ8780+SATELLITE: SATELLITE OBSERVATIONS - January 28, 2004
 AJ8780_ROD/PIPE-DEPTH: 24.4 meters

AJ8780	HISTORY	- Date	Condition	Report By
AJ8780	HISTORY	- 20010925	MONUMENTED	MOREKL
AJ8780	HISTORY	- 20020421	GOOD	MAPTEC
AJ8780	HISTORY	- 20040128	GOOD	USPSQD

AJ8780
 AJ8780 STATION DESCRIPTION

AJ8780'DESCRIBED BY MORGAN AND EKLUND INC 2001 (MAB)
 AJ8780'THE STATION IS LOCATED ABOUT 26.9 KM (16.7 MILES) NORTHWEST OF THE
 AJ8780'PALM BEACH
 AJ8780'INTERNATIONAL AIRPORT, ABOUT 24.2 KM (15.1 MILES) WEST NORTHWEST OF
 AJ8780'RIVIERA BEACH, ABOUT
 AJ8780'8.5 KM (5.3 MILES) SOUTH SOUTHEAST OF THE PALM BEACH RACEWAY IN
 AJ8780'SECTION 6, TOWNSHIP 42
 AJ8780'SOUTH, RANGE 41 EAST.
 AJ8780'
 AJ8780'OWNERSHIP PALM BEACH COUNTY.
 AJ8780'
 AJ8780'TO REACH THE STATION FROM THE INTERSECTION OF STATE ROAD 7 / U.S 441
 AJ8780'AND STATE ROAD 80 /
 AJ8780'U.S. 98 (SOUTHERN BLVD.), GO WEST ON STATE ROAD 80 / U.S. 441 FOR 10.8
 AJ8780'KM (6.7 MILES) TO THE
 AJ8780'INTERSECTION WITH SEMINOLE PRATT WHITNEY ROAD, TURN RIGHT AND GO NORTH
 AJ8780'ON SEMINOLE
 AJ8780'PRATT WHITNEY ROAD FOR 18.8 KM (11.7 MILES) TO THE MARK ON THE RIGHT.
 AJ8780'
 AJ8780'THE MARK IS 33.8 METERS (111.0 FEET) NORTH OF A 4 INCH PINE TREE, 13.3
 AJ8780'METERS (43.7 FEET)
 AJ8780'SOUTH OF A 7 INCH PINE, 6.1 METERS (20.0 FEET) EAST OF THE CENTERLINE
 AJ8780'OF SEMINOLE PRATT
 AJ8780'WHITNEY ROAD (DIRT ROAD), 1.7 METERS (5.6 FEET) EAST OF THE EAST EDGE
 AJ8780'OF A DIRT ROAD AND 1.3
 AJ8780'METERS (4.4 FEET) WEST OF A CARSONITE WITNESS POST. ACCESS TO THE
 AJ8780'DATUM POINT (TOP OF A
 AJ8780'STAINLESS STEEL ROD) IS HAD THROUGH A 5 INCH LOGO CAP.
 AJ8780'
 AJ8780'NOTE A MAGNET WAS PLACED INSIDE THE PVC ENCASMENT.

AJ8780'
 AJ8780'
 AJ8780'
 AJ8780'
 AJ8780 STATION RECOVERY (2002)

AJ8780 RECOVERY NOTE BY MAPTECH INCORPORATED 2002 (CDP)
 AJ8780 THE STATION IS LOCATED ABOUT 26.9 KM (16.7 MILES) NORTHWEST OF THE
 AJ8780 PALM BEACH
 AJ8780 INTERNATIONAL AIRPORT, ABOUT 24.2 KM (15.1 MILES) WEST NORTHWEST OF
 AJ8780 RIVIERA BEACH, ABOUT
 AJ8780 8.5 KM (5.3 MILES) SOUTH SOUTHEAST OF THE PALM BEACH RACEWAY IN
 AJ8780 SECTION 6, TOWNSHIP 42
 AJ8780 SOUTH, RANGE 41 EAST.
 AJ8780 '
 AJ8780 OWNERSHIP PALM BEACH COUNTY.
 AJ8780 '
 AJ8780 TO REACH THE STATION FROM THE INTERSECTION OF STATE ROAD 7 / U.S 441
 AJ8780 AND STATE ROAD 80 /
 AJ8780 U.S. 98 (SOUTHERN BLVD.), GO WEST ON STATE ROAD 80 / U.S. 441 FOR 10.8
 AJ8780 KM (6.7 MILES) TO THE
 AJ8780 INTERSECTION WITH SEMINOLE PRATT WHITNEY ROAD, TURN RIGHT AND GO NORTH
 AJ8780 ON SEMINOLE
 AJ8780 PRATT WHITNEY ROAD FOR 18.8 KM (11.7 MILES) TO THE MARK ON THE RIGHT.
 AJ8780 '
 AJ8780 THE MARK IS 33.8 METERS (111.0 FEET) NORTH OF A 4 INCH PINE TREE, 13.3
 AJ8780 METERS (43.7 FEET)
 AJ8780 SOUTH OF A 7 INCH PINE, 6.1 METERS (20.0 FEET) EAST OF THE CENTERLINE
 AJ8780 OF SEMINOLE PRATT
 AJ8780 WHITNEY ROAD (DIRT ROAD), 1.7 METERS (5.6 FEET) EAST OF THE EAST EDGE
 AJ8780 OF A DIRT ROAD AND 1.3
 AJ8780 METERS (4.4 FEET) WEST OF A CARSONITE WITNESS POST. ACCESS TO THE
 AJ8780 DATUM POINT (TOP OF A
 AJ8780 STAINLESS STEEL ROD) IS HAD THROUGH A 5 INCH LOGO CAP.
 AJ8780 '
 AJ8780 NOTE A MAGNET WAS PLACED INSIDE THE PVC ENCASMENT.
 AJ8780 '
 AJ8780 STATION RECOVERY (2002)

DATASHEETS

AJ8780'RECOVERY NOTE BY MAPTECH, INCORPORATED 2002 (CDP).
AJ8780'RECOVERED AS DESCRIBED.
AJ8780'
AJ8780'
AJ8780'
AJ8780
AJ8780 STATION RECOVERY (2004)
AJ8780
AJ8780'RECOVERY NOTE BY US POWER SQUADRON 2004 (AEP)
AJ8780'LOGO CAP COVER MISSING
AJ8780'

*** retrieval complete.
Elapsed Time = 00:00:00