



<b>PB 717</b>		Elevation:	<b>23.47 ft</b>	(NAVD 88)	24.88 ft	(NGVD 29)
Bench Mark 1:	M 547		23.88 ft	(NAVD 88)	25.29 ft	(NGVD 29)
Bench Mark 2:	N 547		24.02 ft	(NAVD 88)	25.44 ft	(NGVD 29)
Monitoring Well:	PB 717		22.84 ft	(NAVD 88)	24.26 ft	(NGVD 29)
Length of Run:	4.29 km		To Reach PB 717:  FROM INTERSECTION OF INDIANTOWN ROAD & SEMINOLE PRATT WHITNEY ROAD. GO SOUTH ON PRATT WHITNEY ROAD FOR 1.35 MILES CONCRETE MONUMENT WILL BE ON RIGHT. 12.6' EAST OF BARBED WIRE FENCE, 24.65' SOUTHEAST OF LIGHT POLE (#181D3), 26.9' WEST OF CENTERLINE PRATT WHITNEY ROAD, 13.45' NORTHEAST OF A "SOUTHERN BELL" CONCRETE POST (WARNING POST). MAGNET SET 1' NORTH OF MONUMENT.			
Max Allowable Misclosure:	17 mm					
Actual Misclosure:	2 mm					
						

<b>PB 733</b>		Elevation:	<b>16.34 ft</b>	(NAVD 88)	17.85 ft	(NGVD 29)
Bench Mark 1:	C 548		13.67 ft	(NAVD 88)	15.17 ft	(NGVD 29)
Bench Mark 2:	D 548		12.61 ft	(NAVD 88)	14.12 ft	(NGVD 29)
Monitoring Well 1:	PB 733		17.41 ft	(NAVD 88)	18.92 ft	(NGVD 29)
Monitoring Well 2:	PB 767		17.96 ft	(NAVD 88)	19.47 ft	(NGVD 29)
Monitoring Well 3:	PB 768		17.48 ft	(NAVD 88)	18.99 ft	(NGVD 29)
Length of Run:	7.65 km		To Reach PB 733:  FROM INTERSECTION OF 45 <sup>TH</sup> STREET & HAVERHILL ROAD. GO SOUTH ON HAVERHILL ROAD FOR 1.3 MILES TO EARNEST ROAD. GO WEST ON EARNEST ROAD FOR 0.4 MILE TO MARK ON LEFT. 17.7 FEET NORTH OF MONITORING WELL PB 733. 26.4' NORTHWEST OF PALM TREE PK NAIL & DISK (LB 4318), 17.6' SOUTH OF CENTERLINE EARNEST ROAD. SET MAGNET 1' NORTH OF CONCRETE MONUMENT.			
Max Allowable Misclosure:	22 mm					
Actual Misclosure:	1 mm					
						

**PB-717**



**Nick Miller, Inc.**  
**Date of Photo: July 5, 2005**  
**View: Looking at the well PB-717 facing west**



# PB-717



**Nick Miller, Inc.**  
**Date of Photo: July 5, 2005**  
**View: Close-up of the well PB-717 showing the contractor's markings**



**PB-717**



**Nick Miller, Inc.**

**Date of Photo: July 5, 2005**

**View: Looking at the benchmark facing west**

**PB-717**



**Nick Miller, Inc.**  
**Date of Photo: July 5, 2005**  
**View: A top view of the benchmark**



1078

SFUMD

SET CONC MONUMENT AT SITE  
OF MONITORING WELL PB 717.

PB 717

- SET PAURED-IN-PLACE CONCRETE MONUMENT W/ ALUMINUM DISK <sup>SFUMD</sup>
- SET MAGNET 1' NORTH OF CONC. MONUMENT
- SET CONC. MONUMENT 12.6' EAST OF BARBED WIRE FENCE
- " " " 24.65' SE OF LIGHT POLE (#181D3)
- " " " 26.9' WEST OF ♀ PRATT WHITNEY ROAD
- " " " 13.45' NE OF A "SOUTHERN BELL" CONCRETE POST (WARNING POST)

STAMPED PB 717  
2005

COORDINATES ON CONC. MON. PB 717

STATE PLANE 83	WGS 84
N. <del>129527.193</del> ft	N. 26° 55' 19".661
E. <del>32859.955</del> ft	W. 080° 17' 15".872

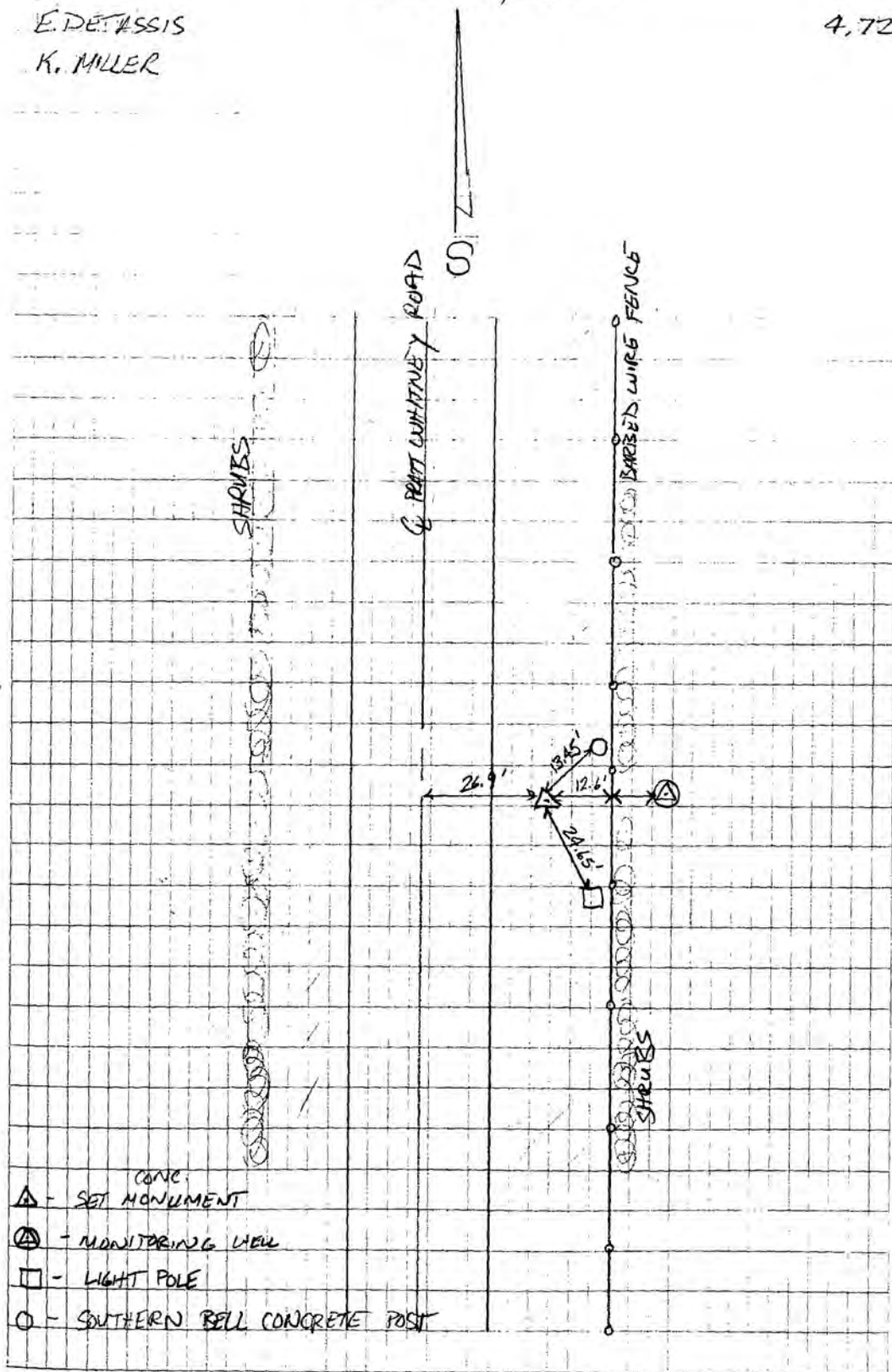
COORDINATES ON MONITORING WELL PB 717

STATE PLANE 83	WGS 84
N. <del>129525.918</del> ft	N. 26° 55' 19".644
E. <del>32844.611</del> ft	W. 080° 17' 16".040

TUES. JULY 5, 2005

4.72

E. DETASSIS  
K. MILLER





SOUTH FLORIDA WATER MANAGEMENT DISTRICT

Rev. 4/01

COUNTY	PALM BEACH	PROJECT	Hydrology – Palm Beach County Wells	DESIGNATION	PB 717 2005
SECTION	12	TOWNSHIP	41 SOUTH	RANGE	40 EAST
GEOGRAPHIC INDEX OF QUAD					
Established by <u>Nick Miller Inc.</u> Recovered by			NAME OF QUADRANGLE West of Road		
SURVEYOR <u>Stephen M. Gordon</u> DATE <u>7/28/2005</u>			FIELD BOOK <u>4</u> PAGE <u>72</u>		
HORIZONTAL DATUM: 1927 <input checked="" type="radio"/> 1983 Other _____ (circle one) ZONE <input checked="" type="radio"/> E or W					
STATE PLANE COORDINATES		E 888,256 ft		N 941,519 ft	
LATITUDE: N 26.92213°		LONGITUDE: W 80.28774°			
VERTICAL DATUM: MSL 1929 <input checked="" type="radio"/> 1988 Other _____ (circle one)			EL. 23.47 ft		
VERTICAL DATUM: MSL <input checked="" type="radio"/> 1929 1988 Other _____ (circle one)			EL. 24.88 ft		
CONTROL ACCURACY: HORIZONTAL 1 2 3 <input checked="" type="radio"/> SUB-METER (circle one) VERTICAL 1 2 <input checked="" type="radio"/> 3					
<b>DESCRIPTION</b>					
<p>To Reach:</p> <p>FROM INTERSECTION OF INDIANTOWN ROAD &amp; SEMINOLE PRATT WHITNEY ROAD. GO SOUTH ON PRATT WHITNEY ROAD FOR 1.35 MILES CONCRETE MONUMENT WILL BE ON RIGHT. 12.6 FEET EAST OF BARBED WIRE FENCE, 24.65 FEET SOUTHEAST OF LIGHT POLE (#181D3), 26.9 FEET WEST OF CENTERLINE PRATT WHITNEY ROAD, 13.45 FEET NORTHEAST OF A “SOUTHERN BELL” CONCRETE POST (WARNING POST). MAGNET SET 1 FOOT NORTH OF MONUMENT.</p> <p>Benchmarks Used: M 547 and N 547</p> <p>Notable Land marks:</p>					



SOUTH FLORIDA WATER MANAGEMENT DISTRICT

Rev. 4/01

SKETCH

1078

SFWMD

E. DETASSIS  
K. MILLER

4.72

SET CONC MONUMENT AT SITE  
OF MONITORING WELL PB 717.

PB 717

- SET BURED-IN-PLACE CONCRETE MONUMENT W/ALUMINUM DISC
- SET MAGNET 1' NORTH OF MON. MONUMENT
- SET CONC. ALIGNMENT 12.6' EAST OF BARBED WIRE FENCE
- " " " 24.65' SE OF LIGHT POLE (#1811DS)
- " " " 26.9' WEST OF G. PRATT WHITNEY ROAD
- " " " 13.45' NE OF SOUTHERN BELL CONCRETE POST (WARNING POST)

STAMPED PB 717  
2005

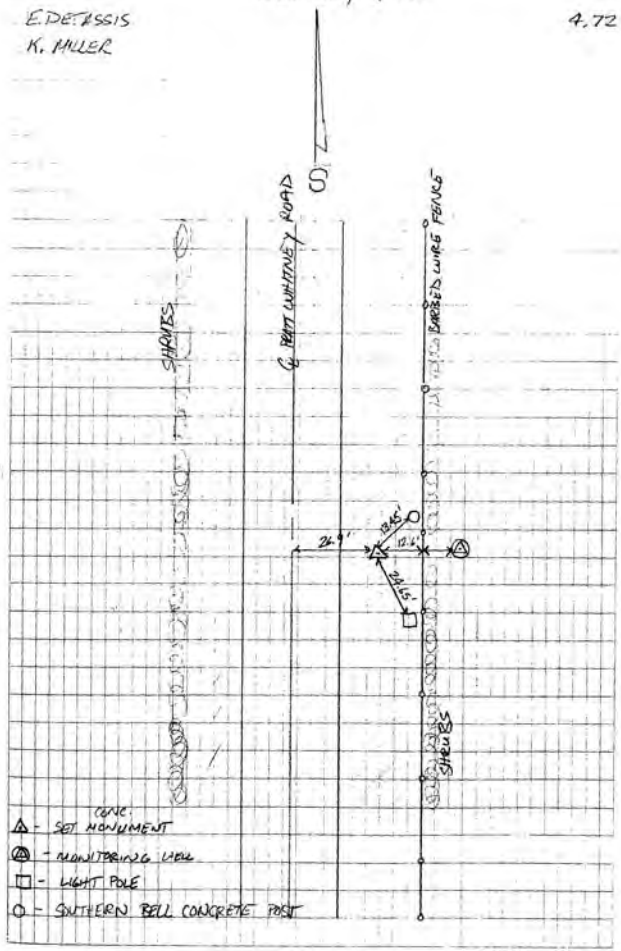
COORDINATES ON CONC. MON PB 717

STATE PLANE 83	WGS 84
N. 129,527.193 ft	N. 26° 55' 19" 66.1
E. 329,577.155 ft	W. 080° 17' 15" 872

COORDINATES ON MONITORING WELL PB 717

STATE PLANE 83	WGS 84
N. 129,525.918 ft	N. 26° 55' 19" 644
E. 329,574.611 ft	W. 080° 17' 16" 090

TUES. JULY 5, 2005



- △ - CONC. MONUMENT
- - MONITORING WELL
- - LIGHT POLE
- - SOUTHERN BELL CONCRETE POST



-\*- FIELD ABSTRACT -\*-

050707-050707 HGZ L26803 8.0 MM ORDER 2 CLASS 2 PAGE 1  
 SOUTH FLORIDA WATER MANAGEMENT DISTRICT  
 PALM BEACH COUNTY MONITORING WELLS  
 ESTABLISH BENCH MARK NEAR MONITORING WELL PB 717

FROM	TO	START	F/B	DIST TOTAL (KM)	ELEV DIFF (MT)	-(F+B) TOTAL (MM)	MEAN DIFF FLD ELEV (MT)	I C
0253 M 547							7.27900	
0253 M 547		7070908	F	1.59	0.04384 *	0.00	0.04384	1
0254 N 547				1.59		0.00	7.32284	
0254 N 547		7071146	F	2.71	-0.16779 *	-5.76	-0.17067	1
0252 PB 717		7071446	B	2.71	0.17355 *			1
				4.29		-5.76	7.15217♀	

ELEVATION REJECTION AND ERROR CODES

- C - section elevation difference was rejected for cause  
 ie. \*43\* record rejection code set to "F"
- R - section elevation difference was rejected by Halperin rejection algorithm
- @ - section elevation difference does not include refraction correction
- \* - section elevation difference does not include rod correction

♀

INSTRUMENT CODE	INSTRUMENT	RODS
1	243 - 332854	396 - 111 396 - 222

♀  
 LEVEL LINE SECTION RUNNING TREE

FROM	TO	N. LATITUDE	W. LONGITUDE	FIELD DISTANCE	VS. COMPUTED
0253		265430	0801758	0.00	0.00
0253	0254	265403	0801709	1.59	1.59
0254	0252	265519	0801715	2.71	2.35♀

SECTION  
 FROM TO ERROR MESSAGES

# The NGS Data Sheet

See file [dsdata.txt](#) for more information about the datasheet.

DATABASE = Sybase ,PROGRAM = datasheet, VERSION = 7.23

1 National Geodetic Survey, Retrieval Date = AUGUST 31, 2005

AJ8868 \*\*\*\*\*

AJ8868 DESIGNATION - M 547

AJ8868 PID - AJ8868

AJ8868 STATE/COUNTY- FL/PALM BEACH

AJ8868 USGS QUAD - WEST OF ROOD (1994)

AJ8868

AJ8868 \*CURRENT SURVEY CONTROL

AJ8868

AJ8868\* NAD 83(1999)- 26 54 30.17735(N) 080 17 58.10516(W) ADJUSTED

AJ8868\* NAVD 88 - 7.279 (meters) 23.88 (feet) ADJUSTED

AJ8868

AJ8868 X - 959,003.881 (meters) COMP

AJ8868 Y - -5,610,093.471 (meters) COMP

AJ8868 Z - 2,869,158.158 (meters) COMP

AJ8868 LAPLACE CORR- -2.50 (seconds) DEFLEC99

AJ8868 ELLIP HEIGHT- -19.26 (meters) (12/12/02) GPS OBS

AJ8868 GEOID HEIGHT- -26.52 (meters) GEOID03

AJ8868 DYNAMIC HT - 7.268 (meters) 23.85 (feet) COMP

AJ8868 MODELED GRAV- 979,105.8 (mgal) NAVD 88

AJ8868

AJ8868 HORZ ORDER - FIRST

AJ8868 VERT ORDER - FIRST CLASS II

AJ8868 ELLP ORDER - THIRD CLASS I

AJ8868

AJ8868.The horizontal coordinates were established by GPS observations

AJ8868.and adjusted by the National Geodetic Survey in December 2002.

AJ8868

AJ8868.The orthometric height was determined by differential leveling

AJ8868.and adjusted by the National Geodetic Survey in May 2002.

AJ8868

AJ8868.The X, Y, and Z were computed from the position and the ellipsoidal ht.

AJ8868

AJ8868.The Laplace correction was computed from DEFLEC99 derived deflections.

AJ8868

AJ8868.The ellipsoidal height was determined by GPS observations

AJ8868.and is referenced to NAD 83.

AJ8868

AJ8868.The geoid height was determined by GEOID03.

AJ8868

AJ8868.The dynamic height is computed by dividing the NAVD 88

AJ8868.geopotential number by the normal gravity value computed on the

AJ8868.Geodetic Reference System of 1980 (GRS 80) ellipsoid at 45

AJ8868.degrees latitude (g = 980.6199 gals.).

AJ8868

AJ8868.The modeled gravity was interpolated from observed gravity values.

AJ8868

AJ8868;

	North	East	Units	Scale	Factor	Converg.
AJ8868;SPC FL E	- 285,445.704	269,583.862	MT	1.00000093		+0 19 01.4
AJ8868;UTM 17	- 2,976,480.293	569,560.121	MT	0.99965973		+0 19 01.4

AJ8868

AJ8868!

	Elev Factor	x	Scale Factor	=	Combined Factor
AJ8868!SPC FL E	- 1.00000303	x	1.00000093	=	1.00000396
AJ8868!UTM 17	- 1.00000303	x	0.99965973	=	0.99966275

AJ8868

AJ8868

AJ8868

AJ8868

AJ8868

AJ8868 SUPERSEDED SURVEY CONTROL

AJ8868

AJ8868 NAVD 88 (12/12/02) 7.28 (m) 23.9 (f) LEVELING 3

AJ8868

AJ8868.Superseded values are not recommended for survey control.

AJ8868.NGS no longer adjusts projects to the NAD 27 or NGVD 29 datums.

AJ8868.[See file dsdata.txt](#) to determine how the superseded data were derived.

AJ8868

AJ8868\_U.S. NATIONAL GRID SPATIAL ADDRESS: 17RNK6956076480(NAD 83)

AJ8868\_MARKER: DD = SURVEY DISK

AJ8868\_SETTING: 7 = SET IN TOP OF CONCRETE MONUMENT

AJ8868\_STAMPING: M 547 2001 CERP

AJ8868\_MARK LOGO: USE



AJ8868\_PROJECTION: RECESSED 10 CENTIMETERS  
 AJ8868\_MAGNETIC: O = OTHER; SEE DESCRIPTION  
 AJ8868\_STABILITY: C = MAY HOLD, BUT OF TYPE COMMONLY SUBJECT TO  
 AJ8868+STABILITY: SURFACE MOTION  
 AJ8868\_SATELLITE: THE SITE LOCATION WAS REPORTED AS SUITABLE FOR  
 AJ8868+SATELLITE: SATELLITE OBSERVATIONS - December 27, 2003

AJ8868	HISTORY	- Date	Condition	Report By
AJ8868	HISTORY	- 20011004	MONUMENTED	MOREKL
AJ8868	HISTORY	- 20020419	GOOD	MAPTEC
AJ8868	HISTORY	- 20031227	GOOD	USPSQD

AJ8868 STATION DESCRIPTION

AJ8868 DESCRIBED BY MORGAN AND EKLUND INC 2001 (MAB)  
 AJ8868 THE STATION IS LOCATED ABOUT 44.7 KM (27.8 MILES) NORTHEAST OF BELLE  
 AJ8868 GLADE, ABOUT 20.7 KM  
 AJ8868 (12.9 MILES) WEST SOUTHWEST OF JUPITER, ABOUT 22.2 KM (13.8 MILES)  
 AJ8868 SOUTHEAST OF INDIANTOWN  
 AJ8868 IN SECTION 13, TOWNSHIP 41 SOUTH, RANGE 40 EAST.  
 AJ8868 OWNERSHIP PALM BEACH COUNTY (STATE ROAD 710 RIGHT OF WAY).  
 AJ8868 TO REACH THE STATION FROM THE INTERSECTION OF STATE ROAD 76 AND STATE  
 AJ8868 ROAD 710 ON THE  
 AJ8868 BRIDGE OVER STATE ROAD 76 AND THE ST. LUCIE CANAL, GO EAST 19.39 KM  
 AJ8868 (12.05 MILES) TO THE  
 AJ8868 MARK ON THE LEFT.  
 AJ8868 THE MARK IS 19.1 METERS (62.7 FEET) SOUTHEAST OF A WOOD UTILITY POLE,  
 AJ8868 9.7 METERS (31.9 FEET)  
 AJ8868 NORTHEAST OF A PK NAIL AND DISK LB4298 SET IN THE NORTH EDGE OF  
 AJ8868 PAVEMENT OF STATE ROAD  
 AJ8868 710, 7.0 METERS (23.0 FEET) SOUTH OF A CARSONITE WITNESS POST AND 2.1  
 AJ8868 METERS (6.9 FEET)  
 AJ8868 NORTH OF THE NORTH EDGE OF PAVEMENT (WEST BOUND LANES) OF STATE ROAD  
 AJ8868 710.  
 AJ8868 NOTE A MAGNET WAS PLACED INSIDE THE PVC ENCASUREMENT.

AJ8868 STATION RECOVERY (2002)

AJ8868 RECOVERY NOTE BY MAPTECH INCORPORATED 2002 (CDP)  
 AJ8868 THE STATION IS LOCATED ABOUT 44.7 KM (27.8 MILES) NORTHEAST OF BELLE  
 AJ8868 GLADE, ABOUT 20.7 KM  
 AJ8868 (12.9 MILES) WEST SOUTHWEST OF JUPITER, ABOUT 22.2 KM (13.8 MILES)  
 AJ8868 SOUTHEAST OF INDIANTOWN  
 AJ8868 IN SECTION 13, TOWNSHIP 41 SOUTH, RANGE 40 EAST.  
 AJ8868 OWNERSHIP PALM BEACH COUNTY (STATE ROAD 710 RIGHT OF WAY).  
 AJ8868 TO REACH THE STATION FROM THE INTERSECTION OF STATE ROAD 76 AND STATE  
 AJ8868 ROAD 710 ON THE  
 AJ8868 BRIDGE OVER STATE ROAD 76 AND THE ST. LUCIE CANAL, GO EAST 19.39 KM  
 AJ8868 (12.05 MILES) TO THE  
 AJ8868 MARK ON THE LEFT.  
 AJ8868 THE MARK IS 19.1 METERS (62.7 FEET) SOUTHEAST OF A WOOD UTILITY POLE,  
 AJ8868 9.7 METERS (31.9 FEET)  
 AJ8868 NORTHEAST OF A PK NAIL AND DISK LB4298 SET IN THE NORTH EDGE OF  
 AJ8868 PAVEMENT OF STATE ROAD  
 AJ8868 710, 7.0 METERS (23.0 FEET) SOUTH OF A CARSONITE WITNESS POST AND 2.1  
 AJ8868 METERS (6.9 FEET)  
 AJ8868 NORTH OF THE NORTH EDGE OF PAVEMENT (WEST BOUND LANES) OF STATE ROAD  
 AJ8868 710.  
 AJ8868 NOTE A MAGNET WAS PLACED INSIDE THE PVC ENCASUREMENT.

AJ8868 STATION RECOVERY (2002)

AJ8868 RECOVERY NOTE BY MAPTECH, INCORPORATED 2002 (CDP)  
 AJ8868 RECOVERED AS DESCRIBED.

AJ8868 STATION RECOVERY (2003)

AJ8868 RECOVERY NOTE BY US POWER SQUADRON 2003 (AEP)  
 AJ8868 ROAD RESURFACED AND WIDENED. MARK NOW 2.5 FEET NORTH OF NORTH EDGE OF  
 AJ8868 PAVEMENT.

AJ8868'

\*\*\* retrieval complete.  
Elapsed Time = 00:00:00



# The NGS Data Sheet

See file [dsdata.txt](#) for more information about the datasheet.

DATABASE = Sybase ,PROGRAM = datasheet, VERSION = 7.23

1 National Geodetic Survey, Retrieval Date = AUGUST 31, 2005

AJ8869 \*\*\*\*\*

AJ8869 DESIGNATION - N 547

AJ8869 PID - AJ8869

AJ8869 STATE/COUNTY- FL/PALM BEACH

AJ8869 USGS QUAD - WEST OF ROOD (1994)

AJ8869

AJ8869 \*CURRENT SURVEY CONTROL

AJ8869

AJ8869\* NAD 83(1999)- 26 54 03.59079(N) 080 17 09.26667(W) ADJUSTED

AJ8869\* NAVD 88 - 7.321 (meters) 24.02 (feet) ADJUSTED

AJ8869

AJ8869 X - 960,394.675 (meters) COMP

AJ8869 Y - -5,610,231.270 (meters) COMP

AJ8869 Z - 2,868,428.468 (meters) COMP

AJ8869 LAPLACE CORR- -2.59 (seconds) DEFLEC99

AJ8869 ELLIP HEIGHT- -19.20 (meters) (12/12/02) GPS OBS

AJ8869 GEOID HEIGHT- -26.53 (meters) GEOID03

AJ8869 DYNAMIC HT - 7.310 (meters) 23.98 (feet) COMP

AJ8869 MODELED GRAV- 979,106.2 (mgal) NAVD 88

AJ8869

AJ8869 HORZ ORDER - FIRST

AJ8869 VERT ORDER - FIRST CLASS II

AJ8869 ELLP ORDER - THIRD CLASS I

AJ8869

AJ8869.The horizontal coordinates were established by GPS observations

AJ8869.and adjusted by the National Geodetic Survey in December 2002.

AJ8869

AJ8869.The orthometric height was determined by differential leveling

AJ8869.and adjusted by the National Geodetic Survey in May 2002.

AJ8869

AJ8869.The X, Y, and Z were computed from the position and the ellipsoidal ht.

AJ8869

AJ8869.The Laplace correction was computed from DEFLEC99 derived deflections.

AJ8869

AJ8869.The ellipsoidal height was determined by GPS observations

AJ8869.and is referenced to NAD 83.

AJ8869

AJ8869.The geoid height was determined by GEOID03.

AJ8869

AJ8869.The dynamic height is computed by dividing the NAVD 88

AJ8869.geopotential number by the normal gravity value computed on the

AJ8869.Geodetic Reference System of 1980 (GRS 80) ellipsoid at 45

AJ8869.degrees latitude (g = 980.6199 gals.).

AJ8869

AJ8869.The modeled gravity was interpolated from observed gravity values.

AJ8869

AJ8869;

	North	East	Units	Scale	Factor	Converg.
AJ8869;SPC FL E	- 284,634.953	270,936.065	MT	1.00000327		+0 19 23.2
AJ8869;UTM 17	- 2,975,669.819	570,911.862	MT	0.99966208		+0 19 23.2

AJ8869;UTM 17 - 2,975,669.819 570,911.862 MT 0.99966208 +0 19 23.2

AJ8869

AJ8869! - Elev Factor x Scale Factor = Combined Factor

AJ8869!SPC FL E - 1.00000302 x 1.00000327 = 1.00000629

AJ8869!UTM 17 - 1.00000302 x 0.99966208 = 0.99966510

AJ8869

AJ8869 SUPERSEDED SURVEY CONTROL

AJ8869

AJ8869 NAVD 88 (12/12/02) 7.32 (m) 24.0 (f) LEVELING 3

AJ8869

AJ8869.Superseded values are not recommended for survey control.

AJ8869.NGS no longer adjusts projects to the NAD 27 or NGVD 29 datums.

AJ8869.[See file dsdata.txt](#) to determine how the superseded data were derived.

AJ8869

AJ8869\_U.S. NATIONAL GRID SPATIAL ADDRESS: 17RNK7091275670(NAD 83)

AJ8869\_MARKER: DD = SURVEY DISK

AJ8869\_SETTING: 7 = SET IN TOP OF CONCRETE MONUMENT

AJ8869\_STAMPING: N 547 2001 CERP

AJ8869\_MARK LOGO: USE

AJ8869\_PROJECTION: RECESSED 10 CENTIMETERS  
 AJ8869\_MAGNETIC: O = OTHER; SEE DESCRIPTION  
 AJ8869\_STABILITY: C = MAY HOLD, BUT OF TYPE COMMONLY SUBJECT TO  
 AJ8869+STABILITY: SURFACE MOTION  
 AJ8869\_SATELLITE: THE SITE LOCATION WAS REPORTED AS SUITABLE FOR  
 AJ8869+SATELLITE: SATELLITE OBSERVATIONS - April 19, 2002

AJ8869	HISTORY	- Date	Condition	Report By
AJ8869	HISTORY	- 20011004	MONUMENTED	MOREKL
AJ8869	HISTORY	- 20020419	GOOD	MAPTEC

## STATION DESCRIPTION

AJ8869 DESCRIBED BY MORGAN AND EKLUND INC 2001 (MAB)  
 AJ8869 THE STATION IS LOCATED ABOUT 45.5 KM (28.2 MILES) NORTHEAST OF BELLE  
 AJ8869 GLADE, ABOUT 19.6 KM  
 AJ8869 (12.2 MILES) WEST SOUTHWEST OF JUPITER, ABOUT 23.8 KM (14.8 MILES)  
 AJ8869 SOUTHEAST OF INDIANTOWN  
 AJ8869 IN SECTION 18, TOWNSHIP 41 SOUTH, RANGE 41 EAST.  
 AJ8869 OWNERSHIP PALM BEACH COUNTY (STATE ROAD 710 RIGHT OF WAY)  
 AJ8869 TO REACH THE STATION FROM THE INTERSECTION OF STATE ROAD 76 AND STATE  
 AJ8869 ROAD 710 ON THE  
 AJ8869 BRIDGE OVER STATE ROAD 76 AND THE ST. LUCIE CANAL, GO EAST ON STATE  
 AJ8869 ROAD 710 FOR 21.0 KM  
 AJ8869 (13.05 MILES) TO THE MARK ON THE LEFT.  
 AJ8869 THE MARK IS 10.2 METERS (33.5 FEET) SOUTH OF A 12 INCH PINE TREE, 9.6  
 AJ8869 METERS (31.4 FEET)  
 AJ8869 SOUTHEAST OF A 10 INCH PINE TREE, 8.2 METERS (27.0 FEET) SOUTH OF A  
 AJ8869 CARSONITE WITNESS POST,  
 AJ8869 8.4 METERS (27.6 FEET) NORTHWEST OF A PK NAIL AND DISK LB4298 SET IN  
 AJ8869 THE NORTH EDGE OF  
 AJ8869 PAVEMENT OF STATE ROAD 710 AND 4.2 METERS (13.9 FEET) NORTH OF THE  
 AJ8869 NORTH EDGE OF  
 AJ8869 PAVEMENT OF STATE ROAD 710.  
 AJ8869 A MAGNET WAS PLACED 0.21 METERS (0.7 FEET) SOUTH OF AND 0.1 METERS  
 AJ8869 (0.3 FEET) BELOW THE  
 AJ8869 MARK.

## STATION RECOVERY (2002)

AJ8869 RECOVERY NOTE BY MAPTECH INCORPORATED 2002 (CDP)  
 AJ8869 THE STATION IS LOCATED ABOUT 45.5 KM (28.2 MILES) NORTHEAST OF BELLE  
 AJ8869 GLADE, ABOUT 19.6 KM  
 AJ8869 (12.2 MILES) WEST SOUTHWEST OF JUPITER, ABOUT 23.8 KM (14.8 MILES)  
 AJ8869 SOUTHEAST OF INDIANTOWN  
 AJ8869 IN SECTION 18, TOWNSHIP 41 SOUTH, RANGE 41 EAST.  
 AJ8869 OWNERSHIP PALM BEACH COUNTY (STATE ROAD 710 RIGHT OF WAY)  
 AJ8869 TO REACH THE STATION FROM THE INTERSECTION OF STATE ROAD 76 AND STATE  
 AJ8869 ROAD 710 ON THE  
 AJ8869 BRIDGE OVER STATE ROAD 76 AND THE ST. LUCIE CANAL, GO EAST ON STATE  
 AJ8869 ROAD 710 FOR 21.0 KM  
 AJ8869 (13.05 MILES) TO THE MARK ON THE LEFT.  
 AJ8869 THE MARK IS 10.2 METERS (33.5 FEET) SOUTH OF A 12 INCH PINE TREE, 9.6  
 AJ8869 METERS (31.4 FEET)  
 AJ8869 SOUTHEAST OF A 10 INCH PINE TREE, 8.2 METERS (27.0 FEET) SOUTH OF A  
 AJ8869 CARSONITE WITNESS POST,  
 AJ8869 8.4 METERS (27.6 FEET) NORTHWEST OF A PK NAIL AND DISK LB4298 SET IN  
 AJ8869 THE NORTH EDGE OF  
 AJ8869 PAVEMENT OF STATE ROAD 710 AND 4.2 METERS (13.9 FEET) NORTH OF THE  
 AJ8869 NORTH EDGE OF  
 AJ8869 PAVEMENT OF STATE ROAD 710.  
 AJ8869 A MAGNET WAS PLACED 0.21 METERS (0.7 FEET) SOUTH OF AND 0.1 METERS  
 AJ8869 (0.3 FEET) BELOW THE  
 AJ8869 MARK.  
 AJ8869 STATION RECOVERY (2002)  
 AJ8869 RECOVERY NOTE BY MAPTECH, INCORPORATED 2002 (CDP)  
 AJ8869 RECOVERED AS DESCRIBED.  
 AJ8869  
 AJ8869



\*\*\* retrieval complete.  
Elapsed Time = 00:00:00

**PB-733**



**Nick Miller, Inc.**

**Date of Photo: July 19, 2005**

**View: Looking at the wells PB-733, PB-767, & PB-768 facing south**



# PB-733



**Nick Miller, Inc.**  
**Date of Photo: July 19, 2005**  
**View: Close-up of the well PB-733 showing the contractor's markings**



# PB-733



**Nick Miller, Inc.**  
**Date of Photo: July 19, 2005**  
**View: Close-up of the well PB-767 showing the contractor's markings**



# PB-733



**Nick Miller, Inc.**  
**Date of Photo: July 19, 2005**  
**View: Close-up of the well PB-768 showing the contractor's markings**



**PB-733**



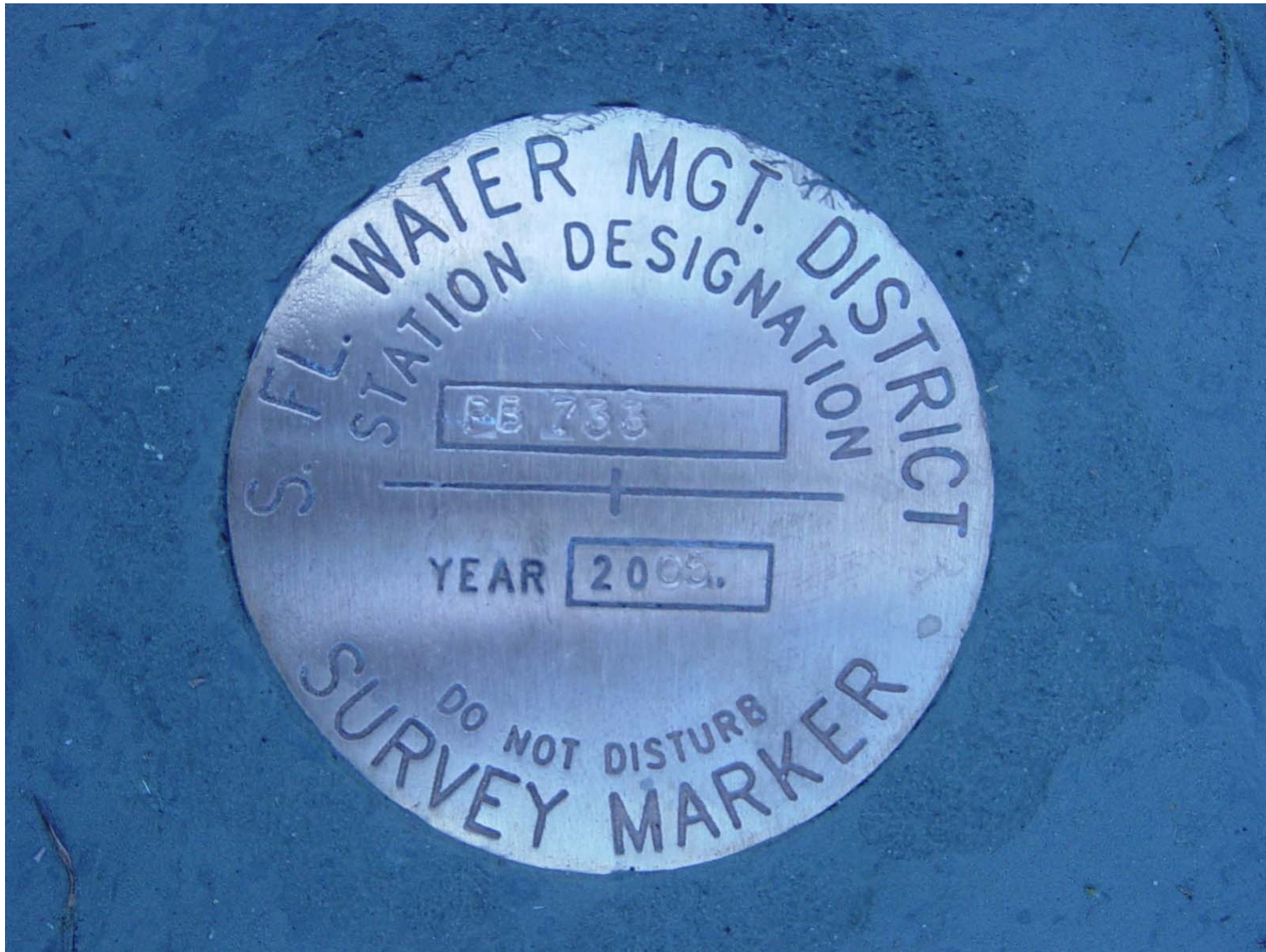
**Nick Miller, Inc.**

**Date of Photo: July 19, 2005**

**View: Looking at the benchmark PB-733 facing north**



**PB-733**



**Nick Miller, Inc.**

**Date of Photo: July 19, 2005**

**View: A top view of the benchmark PB-733**

**PB-733A**



**Nick Miller, Inc.**  
**Date of Photo: July 25, 2005**  
**View: Looking at benchmark PB-733A facing west**



# PB-733A

NAD83  
Y(N)= 269140.355m  
X(E)= 287899.276m  
NAVD88  
5.03018m (16.5032')



Nick Miller, Inc.  
Date of Photo: July 25, 2005  
View: A top view of the benchmark PB-733A





1078

SFWMD

RECON FOR MONITORING WELL  
PB 733/767

\* REFERENCE NGS DATA SHEETS FOR DESCRIPTIONS

- END C548 IN GOOD CONDITION
- END ~~D548~~ D548 IN GOOD CONDITION

(SECOND) FOR  
SET CONCRETE MONUMENT ~~FOR~~  
SITE OF MONITORING WELL PB 733

PB 733A

- SET POURED - IN-PLACE CONCRETE MONUMENT  
W/ <sup>BRASS</sup> ~~ALUM.~~ DISK (SFWMD)
- SET MAGNET 1' NORTH OF CONC. MONUMENT
- SET CONC. MONUMENT 8.4' NORTH OF EDGE OF PAVEMENT OF 45<sup>TH</sup> STREET
- " " " 39.5' WEST OF SW POST OF BUS STOP
- " " " 5.8' SOUTH OF FACE OF WALK
- " " " 99.7' SE OF SW COR. OF PALM LAKE BAPTIST  
ASS. SIGN

COORDINATES ON CONCRETE MONUMENT PB 733A

STATE PLANE 83

NGS 84

N. 269140.355 m

N. 26° 45' 36" 711

E. 287899.276 m

W. 080° 06' 58" 980

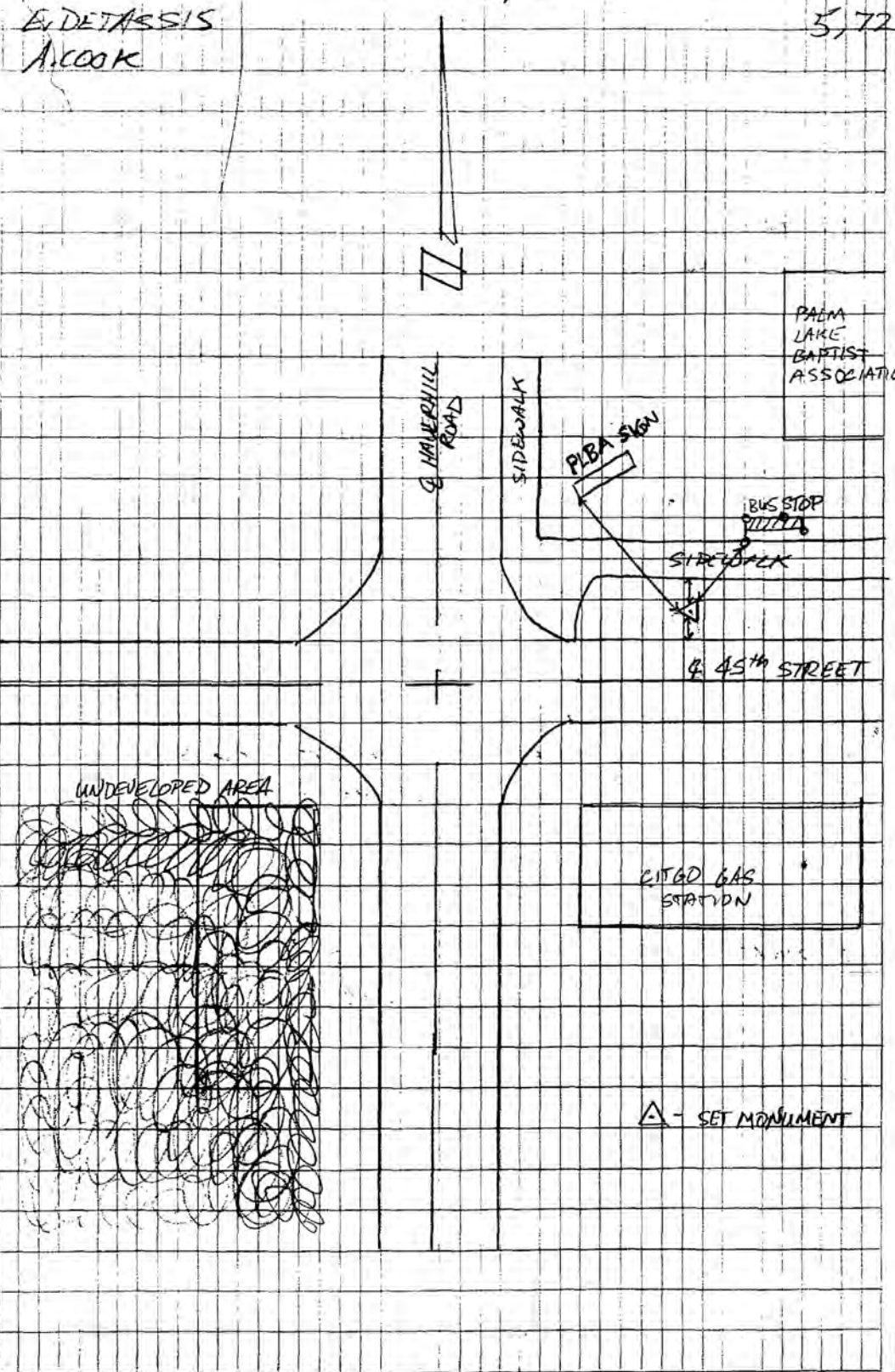
ADD

STAMPED PB 733A  
2005

MON. JULY 25, 2005

E. DETASSIS  
ACCOOK

5, 72





1078

SFWMD

SET THIRD CONCRETE MONUMENT  
FOR MONITORING WELL PR 733/767

PB 733B

- SET POURED-IN-PLACE CONCRETE MONUMENT  
W/ BRASS DISK
- SET MAGNET 1' NORTH OF OF CONC. MONUMENT
- SET CONC. MONUMENT 667' NORTH OF LP 69105-052A-27013
- " " " 7.2' EAST OF BLACK CHAINLINK FENCE
- " " " 61.6' WEST OF ♀ HAVERHILL ROAD
- " " " "

STAMPED ~~PB 733A~~ PB 733B  
2005

COORDINATES ON CONCRETE MONUMENT PB 733B

STATE PLANE 83

NAD 84

N. 267740.170 m

N.  $26^{\circ}44'51''.257$ 

E. 287734.091 m

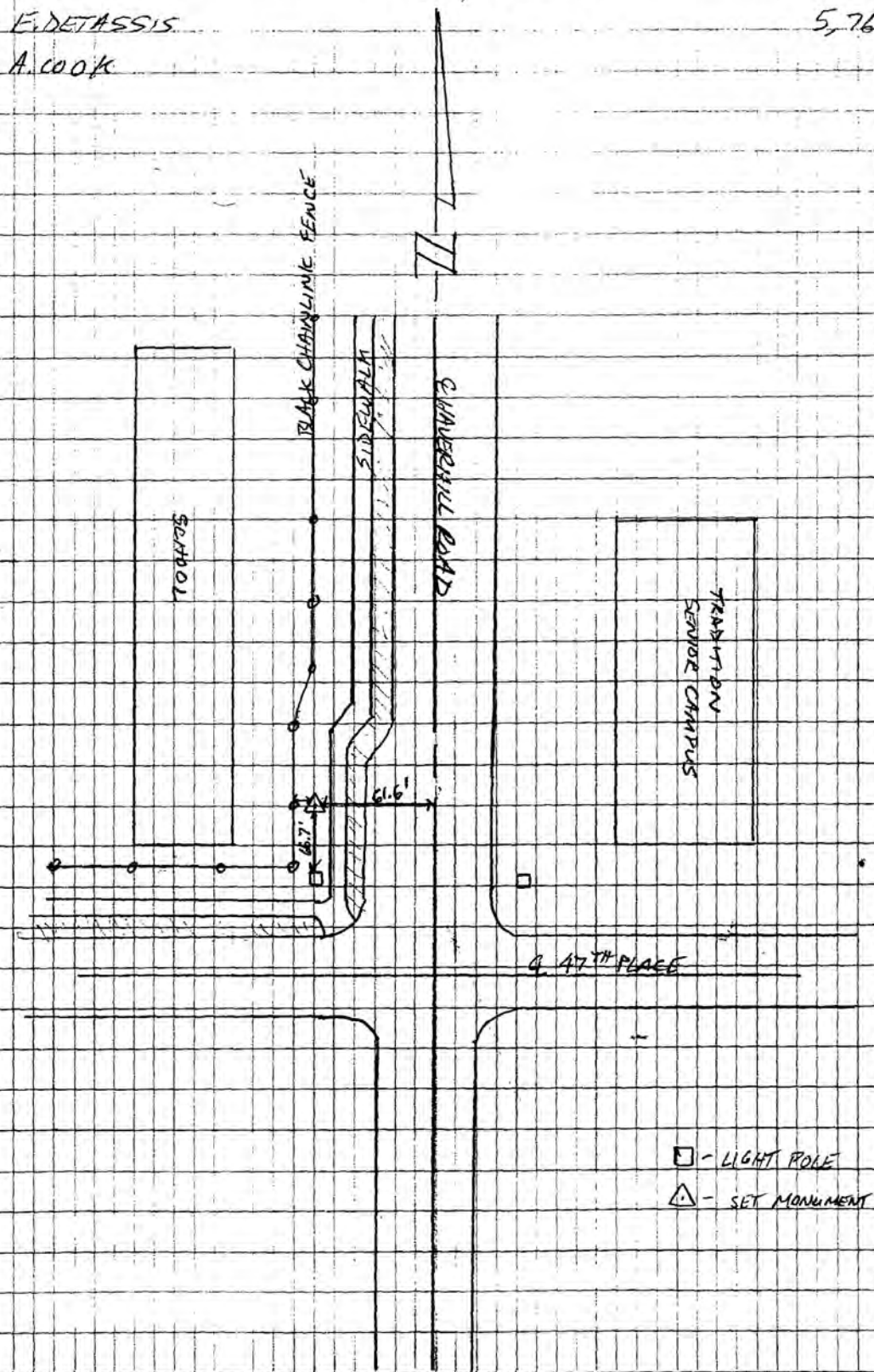
W.  $080^{\circ}07'04''.810$ 

FRI. JULY 29, 2005

E. DETASSIS

5, 76

A. COOK







SOUTH FLORIDA WATER MANAGEMENT DISTRICT

Rev. 4/01

COUNTY	PALM BEACH		PROJECT	Hydrology – Palm Beach County Wells		DESIGNATION	PB 733 2005	
SECTION	11		TOWNSHIP	43 SOUTH		RANGE	42 EAST	
GEOGRAPHIC INDEX OF QUAD								
Established by <u>Nick Miller Inc.</u> Recovered by				NAME OF QUADRANGLE Palm Beach Farms				
SURVEYOR <u>Stephen M. Gordon</u> DATE <u>8/26/2005</u>				FIELD BOOK <u>5</u> PAGE <u>71</u>				
HORIZONTAL DATUM: 1927 <input checked="" type="radio"/> 1983 Other _____ (circle one) ZONE <input checked="" type="radio"/> E or <input type="radio"/> W								
STATE PLANE COORDINATES			E 941,390 ft			N 875,677 ft		
LATITUDE: N 26.74010°			LONGITUDE: W 80.12608°					
VERTICAL DATUM: MSL 1929 <input checked="" type="radio"/> 1988 Other _____ (circle one)						EL. 16.34 ft		
VERTICAL DATUM: MSL <input checked="" type="radio"/> 1929 1988 Other _____ (circle one)						EL. 17.85 ft		
CONTROL ACCURACY: HORIZONTAL 1 2 3 <input checked="" type="radio"/> SUB-METER (circle one) VERTICAL 1 2 <input checked="" type="radio"/> 3								
<b>DESCRIPTION</b>								
To Reach:  FROM INTERSECTION OF 45 <sup>TH</sup> STREET & HAVERHILL ROAD. GO SOUTH ON HAVERHILL ROAD FOR 1.3 MILES TO EARNEST ROAD. GO WEST ON EARNEST ROAD FOR 0.4 MILE TO MARK ON LEFT. 17.7 FEET NORTH OF MONITORING WELL PB 733. 26.4' NORTHWEST OF PALM TREE PK NAIL & DISK (LB 4318), 17.6' SOUTH OF CENTERLINE EARNEST ROAD. SET MAGNET 1' NORTH OF CONCRETE MONUMENT.  Benchmarks Used: C 548 and D 548								
Notable Land marks:								



SOUTH FLORIDA WATER MANAGEMENT DISTRICT

Rev. 4/01

SKETCH

1078 SFWM D

SET CONCRETE MONUMENT AT  
SITE OF MONITORING WELL PB 733/767

PB 733/767

- SET PAIRED-IN-PLACE CONCRETE MONUMENT  
W/ ALUMINUM DISK (SFWM D)
- SET MAGNET 1' NORTH OF CON. MONUMENT

STAMPED PB 733  
2005

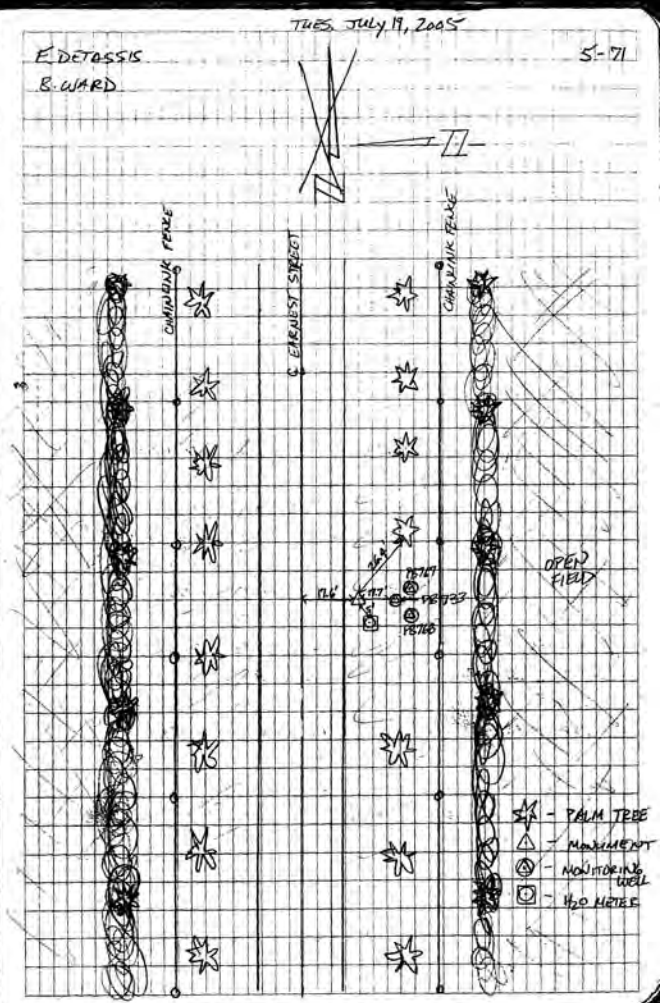
- SET CONG. MONUMENT 17.70' NORTH OF MONITORING WELL PB 733
- " " " 26.90' NW OF PALM TREE PK NAIL DISK (P. 733)
- " " " 5.0' NE OF NE COR CONG. PAD OF H2O METER
- " " " 17.60' SOUTH E EARNEST ROAD

COORDINATES ON CONCRETE MONUMENT PB 733  
STATE PLANE 83 WGS 84

N. 62365.95	ft	N. 26° 44' 29.36"
E. 85582.07	ft	W. 080° 07' 33" 86.87"

COORDINATES ON MONITORING WELL PB 733  
STATE PLANE 83 WGS 84

N. 62346.91	ft	N. 26° 44' 29.17"
E. 85581.65	ft	W. 080° 07' 33" 88"



-\*- FIELD ABSTRACT -\*-

050726-050802 HGZ L26803 8.0 MM ORDER 2 CLASS 2 PAGE 1  
 SOUTH FLORIDA WATER MANAGEMENT DISTRICT  
 PALM BEACH COUNTY MONITORING WELLS  
 ESTABLISH BENCH MARK NEAR MONITORING WELL PB 733

FROM	TO	START	F/B	DI ST TOTAL (KM)	ELEV DI FF (MT)	-(F+B) TOTAL (MM)	MEAN DI FF FLD ELEV (MT)	I C
0271 D 548							3.84300	
0271 D 548		7260900	F	1.58	0.32155 *	0.00	0.32155	1
0270 C 548				1.58		0.00	4.16455	
0270 C 548		7261200	F	2.95	0.86713 *	-3.01	0.86563	1
0272 PB 733	A	7271330	B	2.98	-0.86413 *			1
				4.53		-3.01	5.03018	
0272 PB 733	A	8011230	F	1.49	0.22259 *	1.50	0.22334	1
0277 PB 733	B	8021055	B	1.48	-0.22409 *			2
				6.00		-1.51	5.25352	
0277 PB 733	B	8011445	F	1.66	-0.27278 *	1.33	-0.27211	1
0269 PB 733		8020830	B	1.64	0.27145 *			2
				7.65		-0.17	4.98141♀	

ELEVATION REJECTION AND ERROR CODES

- C - section elevation difference was rejected for cause  
i.e. \*43\* record rejection code set to "F"
- R - section elevation difference was rejected by Halperin rejection algorithm
- @ - section elevation difference does not include refraction correction
- \* - section elevation difference does not include rod correction

♀

INSTRUMENT CODE	INSTRUMENT	RODS
1	243 - 332854	396 - 111      396 - 222
2	243 - 332854	396 - 111      396 - 333

♀

LEVEL LINE SECTION RUNNING TREE

FROM	TO	N. LATITUDE	W. LONGITUDE	FIELD DISTANCE	VS. COMPUTED
0271		264615	0800537	0.00	0.00
0270		264645	0800622	1.58	1.55
0270	0272	264536	0800658	2.95	2.35 **
0272	0277	264451	0800704	1.48	1.39
0277	0269♀	264424	0800733	1.64	1.15♀

SECTION FROM TO ERROR MESSAGES

0270 0272 \*\*\* Field distance exceeds computed distance by more than 0.50 KM!



From the NGS Adjustment file "ngvd29.txt" for the CERP Geodetic Vertical Control Project.  
 Line/Part: L26247 SSN+: mark floated, SSN\*: mark constrained, SSN#: mark floated & constrained

Mark ID	SSN	PID	Designation	Geopotential	Elevation	Codes
1841	3483	AJ8883	D 548	4.2174	4.3035	
1842	3482	AJ8882	C 548	4.5318	4.6242	

## The NGS Data Sheet

See file [dsdata.txt](#) for more information about the datasheet.

DATABASE = Sybase ,PROGRAM = datasheet, VERSION = 7.27

1 National Geodetic Survey, Retrieval Date = SEPTEMBER 15, 2005

AJ8883 \*\*\*\*\*

AJ8883 DESIGNATION - D 548  
 AJ8883 PID - AJ8883  
 AJ8883 STATE/COUNTY- FL/PALM BEACH  
 AJ8883 USGS QUAD - RIVIERA BEACH (1983)  
 AJ8883  
 AJ8883 \*CURRENT SURVEY CONTROL  
 AJ8883  
 AJ8883 \* NAD 83(1999)- 26 46 15.23186(N) 080 05 37.31098(W) ADJUSTED  
 AJ8883 \* NAVD 88 - 3.843 (meters) 12.61 (feet) ADJUSTED  
 AJ8883  
 AJ8883 X - 980,328.856 (meters) COMP  
 AJ8883 Y - -5,613,385.300 (meters) COMP  
 AJ8883 Z - 2,855,564.238 (meters) COMP  
 AJ8883 LAPLACE CORR- -3.95 (seconds) DEFLEC99  
 AJ8883 ELLIP HEIGHT- -22.70 (meters) (12/12/02) GPS OBS  
 AJ8883 GEOID HEIGHT- -26.55 (meters) GEOID03  
 AJ8883 DYNAMIC HT - 3.837 (meters) 12.59 (feet) COMP  
 AJ8883 MODELED GRAV- 979,117.2 (mgal) NAVD 88  
 AJ8883  
 AJ8883 HORZ ORDER - FIRST  
 AJ8883 VERT ORDER - FIRST CLASS II  
 AJ8883 ELLP ORDER - THIRD CLASS I  
 AJ8883

AJ8883.The horizontal coordinates were established by GPS observations  
 AJ8883.and adjusted by the National Geodetic Survey in December 2002.

AJ8883.The orthometric height was determined by differential leveling  
 AJ8883.and adjusted by the National Geodetic Survey in May 2002.

AJ8883.The X, Y, and Z were computed from the position and the ellipsoidal ht.

AJ8883.The Laplace correction was computed from DEFLEC99 derived deflections.

AJ8883.The ellipsoidal height was determined by GPS observations  
 AJ8883.and is referenced to NAD 83.

AJ8883.The geoid height was determined by GEOID03.

AJ8883.The dynamic height is computed by dividing the NAVD 88  
 AJ8883.geopotential number by the normal gravity value computed on the  
 AJ8883.Geodetic Reference System of 1980 (GRS 80) ellipsoid at 45  
 AJ8883.degrees latitude (g = 980.6199 gals.).

AJ8883.The modeled gravity was interpolated from observed gravity values.

	North	East	Units	Scale	Factor	Converg.
AJ8883;SPC FL E	- 270,341.729	290,133.482	MT	1.00004144		+0 24 29.7
AJ8883;UTM 17	- 2,961,381.471	590,102.728	MT	0.99970022		+0 24 29.7
AJ8883!	- Elev Factor	x Scale Factor	=	Combined Factor		
AJ8883!SPC FL E	- 1.00000357	x 1.00004144	=	1.00004501		
AJ8883!UTM 17	- 1.00000357	x 0.99970022	=	0.99970379		

AJ8883 SUPERSEDED SURVEY CONTROL

AJ8883 NAVD 88 (12/12/02) 3.84 (m) 12.6 (f) LEVELING 3

AJ8883.Superseded values are not recommended for survey control.

AJ8883.NGS no longer adjusts projects to the NAD 27 or NGVD 29 datums.

AJ8883.[See file dsdata.txt](#) to determine how the superseded data were derived.

AJ8883\_U.S. NATIONAL GRID SPATIAL ADDRESS: 17RNK9010361381(NAD 83)

AJ8883\_MARKER: DD = SURVEY DISK

AJ8883\_SETTING: 7 = SET IN TOP OF CONCRETE MONUMENT

AJ8883\_STAMPING: D 548 2001 CERP

AJ8883\_MARK LOGO: USE

AJ8883\_PROJECTION: RECESSED 10 CENTIMETERS  
 AJ8883\_MAGNETIC: O = OTHER; SEE DESCRIPTION  
 AJ8883\_STABILITY: C = MAY HOLD, BUT OF TYPE COMMONLY SUBJECT TO  
 AJ8883+STABILITY: SURFACE MOTION  
 AJ8883\_SATELLITE: THE SITE LOCATION WAS REPORTED AS SUITABLE FOR  
 AJ8883+SATELLITE: SATELLITE OBSERVATIONS - April 19, 2002

AJ8883	HISTORY	- Date	Condition	Report By
AJ8883	HISTORY	- 20011101	MONUMENTED	MOREKL
AJ8883	HISTORY	- 20020419	GOOD	MAPTEC

## STATION DESCRIPTION

AJ8883 DESCRIBED BY MORGAN AND EKLUND INC 2001 (MAB)  
 AJ8883 THE STATION IS LOCATED ABOUT 58.8 KM (36.5 MILES) EAST NORTHEAST OF  
 AJ8883 BELLE GLADE, ABOUT 19.0  
 AJ8883 KM (11.8 MILES) SOUTH OF JUPITER, ABOUT 47.7 KM (29.7 MILES) SOUTHEAST  
 AJ8883 OF INDIANTOWN IN  
 AJ8883 SECTION 31, TOWNSHIP 42 SOUTH, RANGE 43 EAST.  
 AJ8883 OWNERSHIP PALM BEACH COUNTY (STATE ROAD 710 RIGHT OF WAY).  
 AJ8883 TO REACH THE STATION FROM THE INTERSECTION OF INTERSTATE 95 AND COUNTY  
 AJ8883 ROAD 809A  
 AJ8883 (NORTHLAKE BLVD.), GO WEST ON COUNTY ROAD 809A FOR 5.5 KM (3.4 MILES)  
 AJ8883 TO THE INTERSECTION  
 AJ8883 OF COUNTY ROAD 809A AND STATE ROAD 710, TURN LEFT AND GO SOUTHEAST ON  
 AJ8883 STATE ROAD 710  
 AJ8883 FOR 7.4 KM (4.6 MILES) TO THE MARK ON THE LEFT.  
 AJ8883 THE MARK IS 25.6 METERS (84.1 FEET) NORTH OF THE NORTH EDGE OF  
 AJ8883 PAVEMENT OF STATE ROAD  
 AJ8883 710, 55.6 METERS (182.3 FEET) WEST OF A CONCRETE UTILITY POLE, 11.3  
 AJ8883 METERS (37.0 FEET)  
 AJ8883 SOUTHEAST OF A CONCRETE UTILITY POLE AND 9.2 METERS (30.3 FEET) SOUTH  
 AJ8883 OF A CARSONITE  
 AJ8883 WITNESS POST AND 8 FOOT CHAIN LINK FENCE.  
 AJ8883 NOTE A MAGNET WAS PLACED 0.21 METERS (0.7 FEET) SOUTH OF AND 0.1  
 AJ8883 METERS (0.3 FEET) BELOW  
 AJ8883 THE MARK.

## STATION RECOVERY (2002)

AJ8883 RECOVERY NOTE BY MAPTECH INCORPORATED 2002 (CDP)  
 AJ8883 THE STATION IS LOCATED ABOUT 58.8 KM (36.5 MILES) EAST NORTHEAST OF  
 AJ8883 BELLE GLADE, ABOUT 19.0  
 AJ8883 KM (11.8 MILES) SOUTH OF JUPITER, ABOUT 47.7 KM (29.7 MILES) SOUTHEAST  
 AJ8883 OF INDIANTOWN IN  
 AJ8883 SECTION 31, TOWNSHIP 42 SOUTH, RANGE 43 EAST.  
 AJ8883 OWNERSHIP PALM BEACH COUNTY (STATE ROAD 710 RIGHT OF WAY).  
 AJ8883 TO REACH THE STATION FROM THE INTERSECTION OF INTERSTATE 95 AND COUNTY  
 AJ8883 ROAD 809A  
 AJ8883 (NORTHLAKE BLVD.), GO WEST ON COUNTY ROAD 809A FOR 5.5 KM (3.4 MILES)  
 AJ8883 TO THE INTERSECTION  
 AJ8883 OF COUNTY ROAD 809A AND STATE ROAD 710, TURN LEFT AND GO SOUTHEAST ON  
 AJ8883 STATE ROAD 710  
 AJ8883 FOR 7.4 KM (4.6 MILES) TO THE MARK ON THE LEFT.  
 AJ8883 THE MARK IS 25.6 METERS (84.1 FEET) NORTH OF THE NORTH EDGE OF  
 AJ8883 PAVEMENT OF STATE ROAD  
 AJ8883 710, 55.6 METERS (182.3 FEET) WEST OF A CONCRETE UTILITY POLE, 11.3  
 AJ8883 METERS (37.0 FEET)  
 AJ8883 SOUTHEAST OF A CONCRETE UTILITY POLE AND 9.2 METERS (30.3 FEET) SOUTH  
 AJ8883 OF A CARSONITE  
 AJ8883 WITNESS POST AND 8 FOOT CHAIN LINK FENCE.  
 AJ8883 NOTE A MAGNET WAS PLACED 0.21 METERS (0.7 FEET) SOUTH OF AND 0.1  
 AJ8883 METERS (0.3 FEET) BELOW  
 AJ8883 THE MARK.

AJ8883 STATION RECOVERY (2002)  
 AJ8883 RECOVERY NOTE BY MAPTECH, INCORPORATED 2002 (CDP) . RECOVERED AS  
 AJ8883 DESCRIBED.  
 AJ8883  
 AJ8883

\*\*\* retrieval complete.  
Elapsed Time = 00:00:01



From the NGS Adjustment file "ngvd29.txt" for the CERP Geodetic Vertical Control Project.  
 Line/Part: L26247 SSN+: mark floated, SSN\*: mark constrained, SSN#: mark floated & constrained

Mark ID	SSN	PID	Designation	Geopotential	Elevation	Codes
1841	3483	AJ8883	D 548	4.2174	4.3035	
1842	3482	AJ8882	C 548	4.5318	4.6242	

## The NGS Data Sheet

See file [dsdata.txt](#) for more information about the datasheet.

DATABASE = Sybase ,PROGRAM = datasheet, VERSION = 7.27

1 National Geodetic Survey, Retrieval Date = SEPTEMBER 15, 2005

AJ8882 \*\*\*\*\*

AJ8882 DESIGNATION - C 548  
 AJ8882 PID - AJ8882  
 AJ8882 STATE/COUNTY- FL/PALM BEACH  
 AJ8882 USGS QUAD - RIVIERA BEACH (1983)  
 AJ8882  
 AJ8882 \*CURRENT SURVEY CONTROL  
 AJ8882  
 AJ8882\* NAD 83(1999)- 26 46 45.70594(N) 080 06 22.90129(W) ADJUSTED  
 AJ8882\* NAVD 88 - 4.166 (meters) 13.67 (feet) ADJUSTED  
 AJ8882  
 AJ8882 X - 979,015.568 (meters) COMP  
 AJ8882 Y - -5,613,185.884 (meters) COMP  
 AJ8882 Z - 2,856,401.740 (meters) COMP  
 AJ8882 LAPLACE CORR- -3.76 (seconds) DEFLEC99  
 AJ8882 ELLIP HEIGHT- -22.38 (meters) (12/12/02) GPS OBS  
 AJ8882 GEOID HEIGHT- -26.54 (meters) GEOID03  
 AJ8882 DYNAMIC HT - 4.159 (meters) 13.64 (feet) COMP  
 AJ8882 MODELED GRAV- 979,116.3 (mgal) NAVD 88  
 AJ8882  
 AJ8882 HORZ ORDER - FIRST  
 AJ8882 VERT ORDER - FIRST CLASS II  
 AJ8882 ELLP ORDER - THIRD CLASS I  
 AJ8882

AJ8882.The horizontal coordinates were established by GPS observations  
 AJ8882.and adjusted by the National Geodetic Survey in December 2002.

AJ8882.The orthometric height was determined by differential leveling  
 AJ8882.and adjusted by the National Geodetic Survey in May 2002.

AJ8882.The X, Y, and Z were computed from the position and the ellipsoidal ht.

AJ8882.The Laplace correction was computed from DEFLEC99 derived deflections.

AJ8882.The ellipsoidal height was determined by GPS observations  
 AJ8882.and is referenced to NAD 83.

AJ8882.The geoid height was determined by GEOID03.

AJ8882.The dynamic height is computed by dividing the NAVD 88  
 AJ8882.geopotential number by the normal gravity value computed on the  
 AJ8882.Geodetic Reference System of 1980 (GRS 80) ellipsoid at 45  
 AJ8882.degrees latitude (g = 980.6199 gals.).

AJ8882.The modeled gravity was interpolated from observed gravity values.

	North	East	Units	Scale	Factor	Converg.
AJ8882;SPC FL E	- 271,270.754	288,867.373	MT	1.00003864		+0 24 09.6
AJ8882;UTM 17	- 2,962,310.179	588,837.052	MT	0.99969743		+0 24 09.6
AJ8882!	- Elev Factor	x Scale Factor	=	Combined Factor		
AJ8882!SPC FL E	- 1.00000352	x 1.00003864	=	1.00004216		
AJ8882!UTM 17	- 1.00000352	x 0.99969743	=	0.99970094		

AJ8882 SUPERSEDED SURVEY CONTROL

AJ8882 NAVD 88 (12/12/02) 4.17 (m) 13.7 (f) LEVELING 3

AJ8882.Superseded values are not recommended for survey control.

AJ8882.NGS no longer adjusts projects to the NAD 27 or NGVD 29 datums.

AJ8882.[See file dsdata.txt](#) to determine how the superseded data were derived.

AJ8882\_U.S. NATIONAL GRID SPATIAL ADDRESS: 17RNK8883762310(NAD 83)

AJ8882\_MARKER: DD = SURVEY DISK

AJ8882\_SETTING: 7 = SET IN TOP OF CONCRETE MONUMENT

AJ8882\_STAMPING: C 548 2001 CERP

AJ8882\_MARK LOGO: USE

AJ8882\_PROJECTION: RECESSED 10 CENTIMETERS  
 AJ8882\_MAGNETIC: O = OTHER; SEE DESCRIPTION  
 AJ8882\_STABILITY: C = MAY HOLD, BUT OF TYPE COMMONLY SUBJECT TO  
 AJ8882+STABILITY: SURFACE MOTION  
 AJ8882\_SATELLITE: THE SITE LOCATION WAS REPORTED AS SUITABLE FOR  
 AJ8882+SATELLITE: SATELLITE OBSERVATIONS - April 19, 2002

AJ8882	HISTORY	- Date	Condition	Report By
AJ8882	HISTORY	- 20011101	MONUMENTED	MOREKL
AJ8882	HISTORY	- 20020419	GOOD	MAPTEC

## STATION DESCRIPTION

AJ8882 DESCRIBED BY MORGAN AND EKLUND INC 2001 (MAB)  
 AJ8882 THE STATION IS LOCATED ABOUT 57.7 KM (35.8 MILES) EAST NORTHEAST OF  
 AJ8882 BELLE GLADE, ABOUT 18.1  
 AJ8882 KM (11.2 MILES) SOUTH SOUTHWEST OF JUPITER, ABOUT 46.2 KM (28.7 MILES)  
 AJ8882 SOUTHEAST OF  
 AJ8882 INDIANTOWN IN SECTION 36, TOWNSHIP 42 SOUTH, RANGE 42 EAST.  
 AJ8882 OWNERSHIP PALM BEACH COUNTY (STATE ROAD 710 RIGHT OF WAY).  
 AJ8882 TO REACH THE STATION FROM THE INTERSECTION OF INTERSTATE 95 AND COUNTY  
 AJ8882 ROAD 809A  
 AJ8882 (NORTHLAKE BLVD.), GO WEST ON COUNTY ROAD 809A FOR 5.5 KM (3.4 MILES)  
 AJ8882 TO THE INTERSECTION  
 AJ8882 OF COUNTY ROAD 809A AND STATE ROAD 710, TURN LEFT AND GO SOUTHEAST ON  
 AJ8882 STATE ROAD 710  
 AJ8882 FOR 5.8 KM (3.6 MILES) TO THE MARK ON THE LEFT.  
 AJ8882 THE MARK IS 22.6 KM (74.0 FEET) SOUTHEAST OF A 16 INCH OAK TREE, 19.3  
 AJ8882 METERS (63.2 FEET) SOUTH  
 AJ8882 OF A CONCRETE BLOCK WALL, 13.8 KM (45.4 FEET) NORTH OF THE NORTH EDGE  
 AJ8882 OF PAVEMENT OF  
 AJ8882 STATE ROAD 710, 10.1 METERS (33.3 FEET) NORTHWEST OF THE WEST END OF A  
 AJ8882 CONCRETE CULVERT  
 AJ8882 AND 9.3 METERS (30.6 FEET) SOUTH OF A CARSONITE WITNESS POST AND WOOD  
 AJ8882 UTILITY POLE.  
 AJ8882 NOTE A MAGNET WAS PLACED 0.21 METERS (0.7 FEET) SOUTH OF AND 0.1  
 AJ8882 METERS (0.3 FEET) BELOW  
 AJ8882 THE MARK.

## STATION RECOVERY (2002)

AJ8882 RECOVERY NOTE BY MAPTECH INCORPORATED 2002 (CDP)  
 AJ8882 THE STATION IS LOCATED ABOUT 57.7 KM (35.8 MILES) EAST NORTHEAST OF  
 AJ8882 BELLE GLADE, ABOUT 18.1  
 AJ8882 KM (11.2 MILES) SOUTH SOUTHWEST OF JUPITER, ABOUT 46.2 KM (28.7 MILES)  
 AJ8882 SOUTHEAST OF  
 AJ8882 INDIANTOWN IN SECTION 36, TOWNSHIP 42 SOUTH, RANGE 42 EAST.  
 AJ8882 OWNERSHIP PALM BEACH COUNTY (STATE ROAD 710 RIGHT OF WAY).  
 AJ8882 TO REACH THE STATION FROM THE INTERSECTION OF INTERSTATE 95 AND COUNTY  
 AJ8882 ROAD 809A  
 AJ8882 (NORTHLAKE BLVD.), GO WEST ON COUNTY ROAD 809A FOR 5.5 KM (3.4 MILES)  
 AJ8882 TO THE INTERSECTION  
 AJ8882 OF COUNTY ROAD 809A AND STATE ROAD 710, TURN LEFT AND GO SOUTHEAST ON  
 AJ8882 STATE ROAD 710  
 AJ8882 FOR 5.8 KM (3.6 MILES) TO THE MARK ON THE LEFT.  
 AJ8882 THE MARK IS 22.6 KM (74.0 FEET) SOUTHEAST OF A 16 INCH OAK TREE, 19.3  
 AJ8882 METERS (63.2 FEET) SOUTH  
 AJ8882 OF A CONCRETE BLOCK WALL, 13.8 KM (45.4 FEET) NORTH OF THE NORTH EDGE  
 AJ8882 OF PAVEMENT OF  
 AJ8882 STATE ROAD 710, 10.1 METERS (33.3 FEET) NORTHWEST OF THE WEST END OF A  
 AJ8882 CONCRETE CULVERT  
 AJ8882 AND 9.3 METERS (30.6 FEET) SOUTH OF A CARSONITE WITNESS POST AND WOOD  
 AJ8882 UTILITY POLE.  
 AJ8882 NOTE A MAGNET WAS PLACED 0.21 METERS (0.7 FEET) SOUTH OF AND 0.1  
 AJ8882 METERS (0.3 FEET) BELOW  
 AJ8882 THE MARK.  
 AJ8882 STATION RECOVERY (2002)  
 AJ8882 RECOVERY NOTE BY MAPTECH, INCORPORATED 2002 (CDP)  
 AJ8882 RECOVERED AS DESCRIBED.  
 AJ8882

AJ8882'

\*\*\* retrieval complete.  
Elapsed Time = 00:00:00