



PB 834B		Elevation:	6.51 ft	(NAVD 88)	8.06 ft	(NGVD 29)
Bench Mark 1:	J 402		7.00 ft	(NAVD 88)	8.54 ft	(NGVD 29)
Bench Mark 2:	Z 34		8.89 ft	(NAVD 88)	10.44 ft	(NGVD 29)
Monitoring Well 1:	PB 834B		6.26 ft	(NAVD 88)	7.81 ft	(NGVD 29)
Monitoring Well 2:	PB 846		5.92 ft	(NAVD 88)	7.46 ft	(NGVD 29)
Length of Run:	1.18 km		To Reach PB 834B:			
Max Allowable Misclosure:		9 mm	FROM INTERSECTION HYPOLUXO ROAD AND FEDERAL HIGHWAY/US1, GO NORTH ON FEDERAL HWY/US 1 FOR 0.65 MILES. CONCRETE MONUMENT WILL BE ON RIGHT. 4.5' WEST OF EDGE OF PAVEMENT OF PARKING LOT. FOR TOWN OF LANTANA RECREATION CENTER, 5.45' EAST OF BACK OF SIDEWALK, 17.5' SOUTH OF PK NAIL & DISK LB4318 ON SOUTH SIDE OF TRUNK OF PALM TREE, 20.55' NORTH OF PK NAIL & DISK LB 4318 ON NORTH SIDE OF TRUNK OF PALM TREE, 29.3' NORTHWEST OF MONITORING WELL PB 834B. SET MAGNET 1' NORTH OF CONCRETE MONUMENT.			
Actual Misclosure:		7 mm				
						

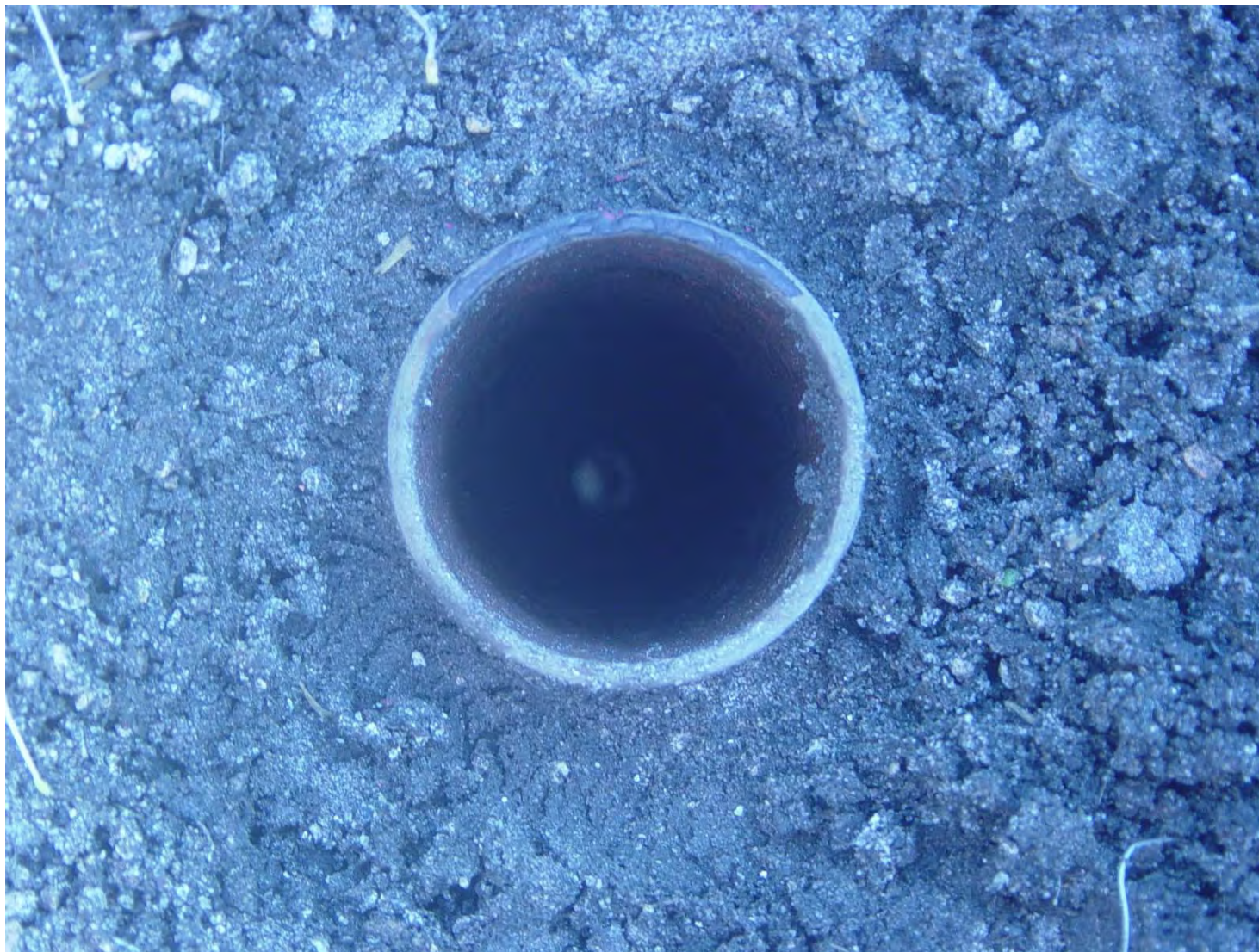
PB 847		Elevation:	3.67 ft	(NAVD 88)	5.19 ft	(NGVD 29)
Bench Mark 1:	L 233		18.71 ft	(NAVD 88)	20.23 ft	(NGVD 29)
Bench Mark 2:	M 233		16.89 ft	(NAVD 88)	18.41 ft	(NGVD 29)
Monitoring Well 1:	PB 847		3.19 ft	(NAVD 88)	4.71 ft	(NGVD 29)
Length of Run:	3.15 km		To Reach PB 847:			
Max Allowable Misclosure:		14 mm	FROM INTERSECTION SOUTHERN BLVD. AND WASHINGTON ROAD. GO NORTH ON WASHINGTON ROAD FOR 0.6 MILES TO STOP SIGN OF INTERSECTION WASHINGTON AVE AND ROYAL PALM ROAD. CONCRETE MONUMENT WILL BE ON RIGHT IN GEORGE S. PETTY PARK. 9.9' EAST OF BACK OF SIDEWALK. 47.9' NORTHEAST OF LIGHT POLE (68221030807). 24.0' SOUTH OF LARGE FICUS TREE. 18.3' WEST OF MONITORING WELL PB 847. SET MAGNET 1' NORTH OF CONCRETE MONUMENT.			
Actual Misclosure:		8 mm				
						

PB-834B/846



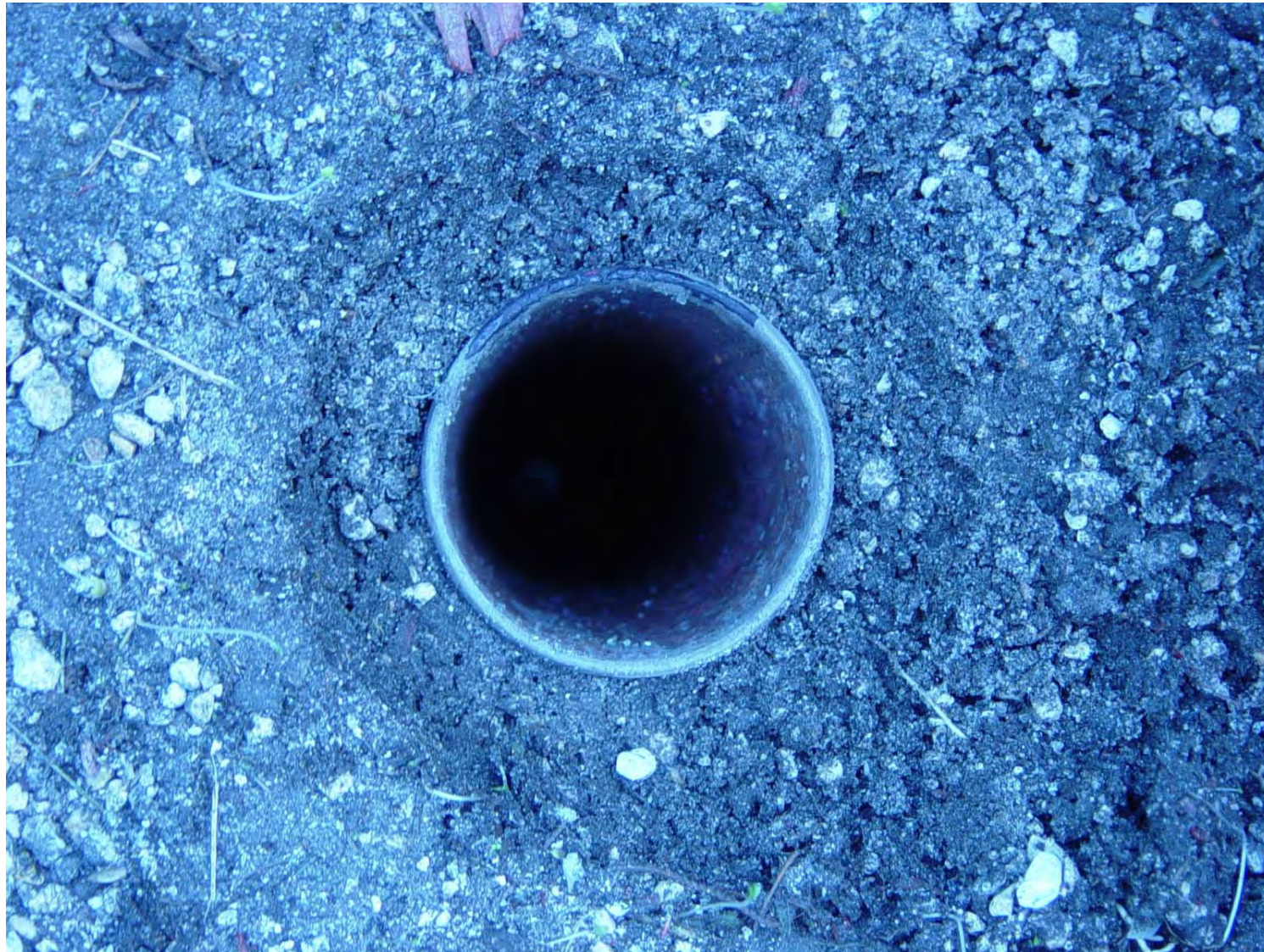
Nick Miller, Inc.
Date of Photo: May 31, 2005
View: Looking at the wells PB-834B (south well) & PB-846 (north well) facing north

PB-834B/846



Nick Miller, Inc.
Date of Photo: May 31, 2005
View: Close-up of the well PB-834B showing the contractor's markings

PB-834B/846



Nick Miller, Inc.

Date of Photo: May 31, 2005

View: Close-up of the well PB-846 showing the contractor's markings

PB-834B/846



Nick Miller, Inc.

Date of Photo: May 31, 2005

View: Looking at the benchmark facing north

PB-834B/846



Nick Miller, Inc.
Date of Photo: May 31, 2005
View: A top view of the benchmark

1078

SFUMD

SET CONC. MON. AT THE SITE
OF MONITORING WELL PB 834B/846

PB 834B/846

- SET POURED -IN- PLACE CONC. MONUMENT
- SET MAGNET 1' NORTH OF CONC. MON.
- SET CONC. MON. 4.5' WEST OF EDGE OF PAVEMENT OF PARKING LOT
- " " " 5.45' EAST OF BACK OF SIDEWALK
- " " " 17.5' SOUTH OF PK NAIL & DISK (B318) IN PALM TREE
- " " " 20.55' NORTH " " " " " "
- " " " 29.3' NW OF MON. WELL PB 834B

STAMPED PB 834B

2005

COORDINATES ON CONC. MON.

STATE PLANE 83

WGS 84

N. 29971.514 m

N. 26° 34' 52".918

E. 294413.313 m

W. 080° 03' 08".035

COORDINATES ON MON. WELL: PB 834B & PB 846

STATE PLANE 83

WGS 84

N. 299363.169 m

N. 26° 34' 52".647

E. 294417.406 m

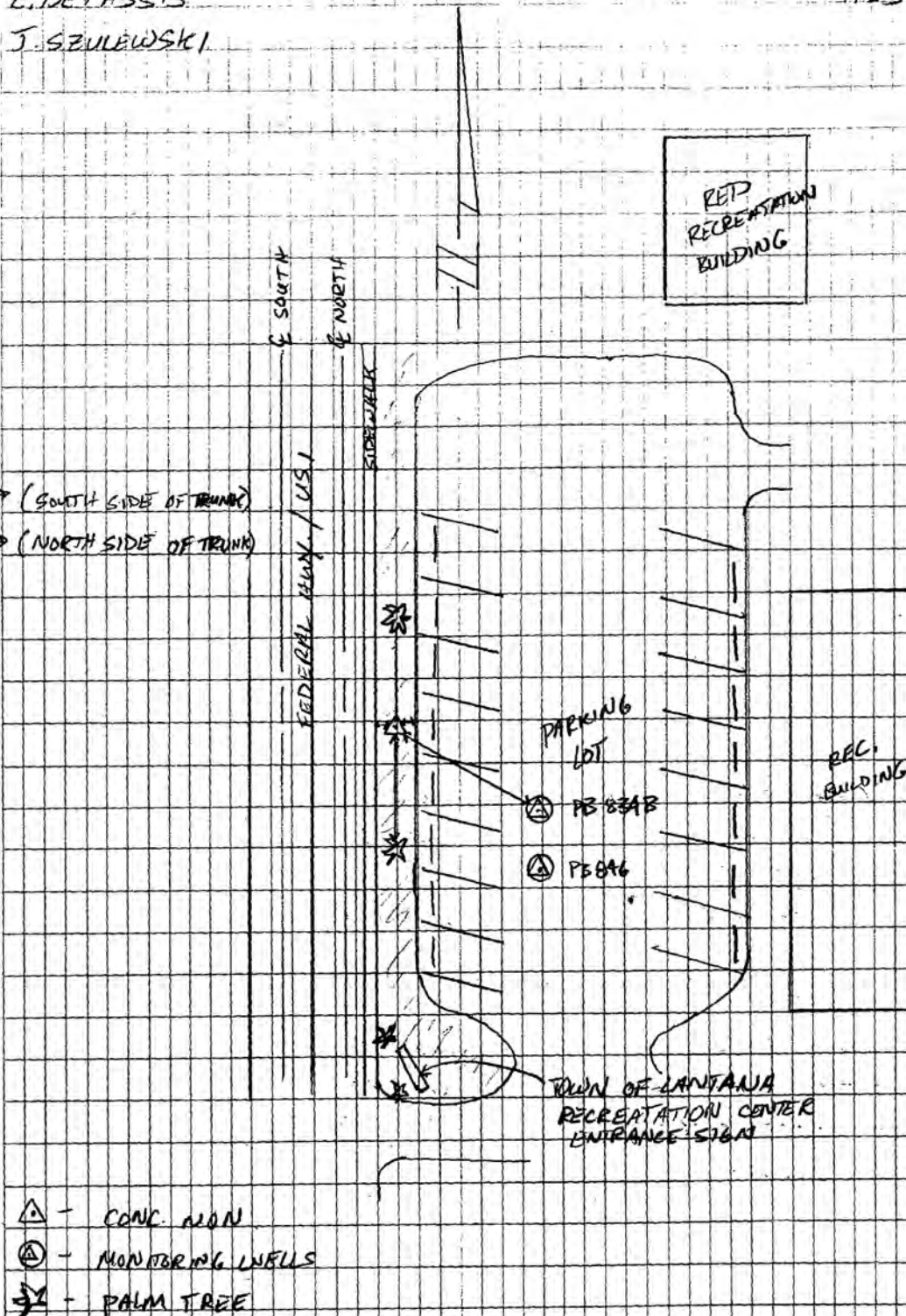
W. 080° 03' 07".896

MAY 31, 2005

E. DETASSIS

4.65

J. SZULEWSKI





SOUTH FLORIDA WATER MANAGEMENT DISTRICT

Rev. 4/01

COUNTY	PALM BEACH	PROJECT	Hydrology – Palm Beach County Wells	DESIGNATION	PB 834B 2005
SECTION	03	TOWNSHIP	45 SOUTH	RANGE	43 EAST
GEOGRAPHIC INDEX OF QUAD					
Established by <u>Nick Miller Inc.</u> Recovered by			NAME OF QUADRANGLE Lake Worth		
SURVEYOR <u>Stephen M. Gordon</u> DATE <u>5/31/2005</u>			FIELD BOOK <u>4</u> PAGE <u>65</u>		
HORIZONTAL DATUM: 1927 <input checked="" type="radio"/> 1983 Other _____ (circle one) ZONE <input checked="" type="radio"/> E or W					
STATE PLANE COORDINATES		E 965,921 ft		N 818,149 ft	
LATITUDE: N 26.58137°		LONGITUDE: W 80.05223°			
VERTICAL DATUM: MSL 1929 <input checked="" type="radio"/> 1988 Other _____ (circle one)			EL. 6.51 ft		
VERTICAL DATUM: MSL <input checked="" type="radio"/> 1929 1988 Other _____ (circle one)			EL. 8.05 ft		
CONTROL ACCURACY: HORIZONTAL 1 2 3 <input checked="" type="radio"/> SUB-METER (circle one) VERTICAL 1 2 <input checked="" type="radio"/> 3					
DESCRIPTION					
<p>To Reach:</p> <p>FROM INTERSECTION HYPOLUXO ROAD AND FEDERAL HIGHWAY/US1, GO NORTH ON FEDERAL HWY/US 1 FOR 0.65 MILES. CONCRETE MONUMENT WILL BE ON RIGHT. 4.5 FEET WEST OF EDGE OF PAVEMENT OF PARKING LOT. FOR TOWN OF LANTANA RECREATION CENTER, 5.45 FEET EAST OF BACK OF SIDEWALK, 17.5 FEET SOUTH OF PK NAIL & DISK LB4318 ON SOUTH SIDE OF TRUNK OF PALM TREE, 20.55 FEET NORTH OF PK NAIL & DISK LB 4318 ON NORTH SIDE OF TRUNK OF PALM TREE, 29.3 FEET NORTHWEST OF MONITORING WELL PB 834B. SET MAGNET 1FOOT NORTH OF CONCRETE MONUMENT.</p> <p>Benchmarks Used: J 402 and Z 34</p> <p>Notable Land marks:</p>					



SOUTH FLORIDA WATER MANAGEMENT DISTRICT

Rev. 4/01

SKETCH

107B

SFWMD

SET CONC. MON. AT THE SITE OF MONITORING WELL PB 834B/846

PB 834B/846

- SET TOURED - IN-PLACE CONC. MONUMENT
- SET MAGNET 1' NORTH OF CONC. MON.
- SET CONC. MON. 4.5' WEST OF EDGE OF PAVEMENT OF PARKING LOT
- " " " 5.85' EAST OF BACK OF SIDEWALK
- " " " 17.5' SOUTH OF TR. NAIL & DISK 1834B IN PALM TREE
- " " " 20.55' NORTH " " " " " " " "
- " " " 79.3' NW OF MON. WELL PB 834B

STAMPED PB 834B
2005

COORDINATES ON CONC. MON.

STATE PLANE 83	WGS 84
N. 29271.514 m	N. 26° 34' 52.918
E. 294413.313 m	W. 080° 03' 08.035

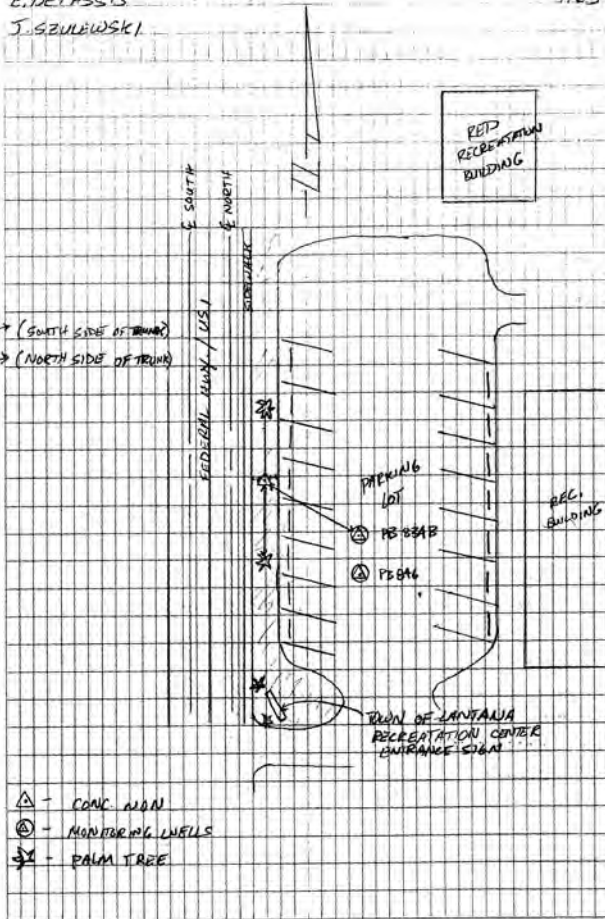
COORDINATES ON MON. WELL PB 834B & PB 846

STATE PLANE 83	WGS 84
N. 299363.169 m	N. 26° 24' 52.647
E. 294417.406 m	W. 080° 03' 07.896

MAY 31, 2005

E. DETYSSIS
J. SZULEWSKI

4.65



-*- FIELD ABSTRACT -*-

050606-050606 HGZ L26803 8.0 MM ORDER 2 CLASS 2 PAGE 1
SOUTH FLORIDA WATER MANAGEMENT DISTRICT
PALM BEACH COUNTY MONITORING WELLS
ESTABLISH BENCH MARK NEAR MONITORING WELL PB-834 AND PB-846

FROM TO	START	F/B	DIST TOTAL (KM)	ELEV DIFF (MT)	-(F+B) TOTAL (MM)	MEAN DIFF FLD ELEV (MT)	I C
0228 J 402						2.13400	
0228 J 402	6061348	F	0.40	-0.14862 *	-0.49	-0.14886	1
0229 PB 834 B	6061600	B	0.39	0.14911 *		1.98514	1
			0.39		-0.49		
0229 PB 834 B	6061435	F	0.79	0.73132 *	0.00	0.73132	1
0230 Z 34							
			1.18		-0.49	2.71646♀	

ELEVATION REJECTION AND ERROR CODES

- C - section elevation difference was rejected for cause i.e. *43* record rejection code set to "F"
- R - section elevation difference was rejected by Halperin rejection algorithm
- @ - section elevation difference does not include refraction correction
- * - section elevation difference does not include rod correction

♀

INSTRUMENT CODE	INSTRUMENT	RODS
1	243 - 331132	396 - 111 396 - 222

♀
LEVEL LINE SECTION RUNNING TREE

FROM	TO	N. LATITUDE	W. LONGITUDE	FIELD DISTANCE	VS. COMPUTED
0228		263504	0800307	0.00	0.00
0228	0229	263452	0800308	0.39	0.37
0229	0230	263430	0800312	0.79	0.69♀

SECTION FROM TO ERROR MESSAGES

The NGS Data Sheet

See file [dsdata.txt](#) for more information about the datasheet.

DATABASE = Sybase ,PROGRAM = datasheet, VERSION = 7.27

1 National Geodetic Survey, Retrieval Date = SEPTEMBER 15, 2005

AD8036 *****

AD8036 DESIGNATION - J 402

AD8036 PID - AD8036

AD8036 STATE/COUNTY- FL/PALM BEACH

AD8036 USGS QUAD - LAKE WORTH (1983)

AD8036

AD8036 *CURRENT SURVEY CONTROL

AD8036

AD8036* NAD 83(1999)- 26 35 04.32181(N) 080 03 07.73169(W) ADJUSTED

AD8036* NAVD 88 - 2.134 (meters) 7.00 (feet) ADJUSTED

AD8036

AD8036 X - 986,000.633 (meters) COMP

AD8036 Y - -5,621,803.004 (meters) COMP

AD8036 Z - 2,837,113.004 (meters) COMP

AD8036 LAPLACE CORR- -4.73 (seconds) DEFLEC99

AD8036 ELLIP HEIGHT- -24.09 (meters) (12/12/02) GPS OBS

AD8036 GEOID HEIGHT- -26.25 (meters) GEOID03

AD8036 DYNAMIC HT - 2.131 (meters) 6.99 (feet) COMP

AD8036 MODELED GRAV- 979,109.4 (mgal) NAVD 88

AD8036

AD8036 HORZ ORDER - FIRST

AD8036 VERT ORDER - FIRST CLASS II

AD8036 ELLP ORDER - FOURTH CLASS I

AD8036

AD8036.The horizontal coordinates were established by GPS observations

AD8036.and adjusted by the National Geodetic Survey in December 2002.

AD8036

AD8036.The orthometric height was determined by differential leveling

AD8036.and adjusted by the National Geodetic Survey in May 1994.

AD8036

AD8036.The X, Y, and Z were computed from the position and the ellipsoidal ht.

AD8036

AD8036.The Laplace correction was computed from DEFLEC99 derived deflections.

AD8036

AD8036.The ellipsoidal height was determined by GPS observations

AD8036.and is referenced to NAD 83.

AD8036

AD8036.The geoid height was determined by GEOID03.

AD8036

AD8036.The dynamic height is computed by dividing the NAVD 88

AD8036.geopotential number by the normal gravity value computed on the

AD8036.Geodetic Reference System of 1980 (GRS 80) ellipsoid at 45

AD8036.degrees latitude (g = 980.6199 gals.).

AD8036

AD8036.The modeled gravity was interpolated from observed gravity values.

AD8036

AD8036;

	North	East	Units	Scale	Factor	Converg.
AD8036;SPC FL E	- 249,722.529	294,419.293	MT	1.00005120	+0 25	27.2
AD8036;UTM 17	- 2,940,769.307	594,387.077	MT	0.99970999	+0 25	27.2

AD8036

AD8036!

	Elev Factor	x	Scale Factor	=	Combined Factor
AD8036!SPC FL E	- 1.00000378	x	1.00005120	=	1.00005498
AD8036!UTM 17	- 1.00000378	x	0.99970999	=	0.99971377

AD8036

AD8036

AD8036

AD8036

AD8036

AD8036 SUPERSEDED SURVEY CONTROL

AD8036

AD8036 NAVD 88 (12/12/02) 2.13 (m) 7.0 (f) LEVELING 3

AD8036 NGVD 29 (09/01/92) 2.603 (m) 8.54 (f) ADJUSTED 1 2

AD8036

AD8036.Superseded values are not recommended for survey control.

AD8036.NGS no longer adjusts projects to the NAD 27 or NGVD 29 datums.

AD8036.[See file dsdata.txt](#) to determine how the superseded data were derived.

AD8036

AD8036_U.S. NATIONAL GRID SPATIAL ADDRESS: 17RNK9438740769(NAD 83)

AD8036_MARKER: F = FLANGE-ENCASED ROD

AD8036_SETTING: 49 = STAINLESS STEEL ROD W/O SLEEVE (10 FT.+))

AD8036_SP_SET: STAINLESS STEEL ROD

DATASHEETS

AD8036_STAMPING: J 402 1991
 AD8036_MARK LOGO: NGS
 AD8036_PROJECTION: RECESSED 9 CENTIMETERS
 AD8036_MAGNETIC: M = MARKER EQUIPPED WITH BAR MAGNET
 AD8036_STABILITY: A = MOST RELIABLE AND EXPECTED TO HOLD
 AD8036+STABILITY: POSITION/ELEVATION WELL
 AD8036_SATELLITE: THE SITE LOCATION WAS REPORTED AS SUITABLE FOR
 AD8036+SATELLITE: SATELLITE OBSERVATIONS - February 10, 2005
 AD8036_ROD/PIPE-DEPTH: 8.1 meters

AD8036	HISTORY	- Date	Condition	Report By
AD8036	HISTORY	- 1991	MONUMENTED	NGS
AD8036	HISTORY	- 20020521	GOOD	MAPTEC
AD8036	HISTORY	- 20030919	GOOD	USPSQD
AD8036	HISTORY	- 20050210	GOOD	USPSQD

AD8036
 AD8036 STATION DESCRIPTION

AD8036 DESCRIBED BY NATIONAL GEODETIC SURVEY 1991
 AD8036 IN LANTANA, AT THE INTERSECTION OF THE FLORIDA EAST COAST RAILROAD
 AD8036 AND OCEAN AVENUE, 17.3 M (56.8 FT) WEST OF THE WEST CURB OF U.S.
 AD8036 HIGHWAY 1, 12.0 M (39.4 FT) NORTH OF AND LEVEL WITH THE AVENUE
 AD8036 CENTERLINE, 8.7 M (28.5 FT) EAST OF THE NEAR RAIL, 0.4 M (1.3 FT)
 AD8036 SOUTH OF A RIGHT-OF-WAY POST, AND 0.3 M (1.0 FT) NORTH OF A WITNESS
 AD8036 POST. NOTE--ACCESS TO THE DATUM POINT IS THROUGH A 5-INCH LOGO CAP.

AD8036
 AD8036 STATION RECOVERY (2002)

AD8036 RECOVERY NOTE BY MAPTECH INCORPORATED 2002 (CDP)
 AD8036 RECOVERED AS DESCRIBED.

AD8036
 AD8036 STATION RECOVERY (2003)

AD8036 RECOVERY NOTE BY US POWER SQUADRON 2003 (AAS)
 AD8036 RECOVERED IN GOOD CONDITION.

AD8036
 AD8036 STATION RECOVERY (2005)

AD8036 RECOVERY NOTE BY US POWER SQUADRON 2005 (AAS)
 AD8036 RECOVERED IN GOOD CONDITION.

*** retrieval complete.
 Elapsed Time = 00:00:01

The NGS Data Sheet

See file [dsdata.txt](#) for more information about the datasheet.

```

DATABASE = Sybase ,PROGRAM = datasheet, VERSION = 7.27
1 National Geodetic Survey, Retrieval Date = SEPTEMBER 15, 2005
AD2745 *****
AD2745 DESIGNATION - Z 34
AD2745 PID - AD2745
AD2745 STATE/COUNTY- FL/PALM BEACH
AD2745 USGS QUAD - LAKE WORTH (1983)
AD2745
AD2745 *CURRENT SURVEY CONTROL
AD2745
AD2745 * NAD 83(1986)- 26 34 30. (N) 080 03 12. (W) SCALED
AD2745 * NAVD 88 - 2.709 (meters) 8.89 (feet) ADJUSTED
AD2745
AD2745 GEOID HEIGHT- -26.23 (meters) GEOID03
AD2745 DYNAMIC HT - 2.705 (meters) 8.87 (feet) COMP
AD2745 MODELED GRAV- 979,108.4 (mgal) NAVD 88
AD2745
AD2745 VERT ORDER - FIRST CLASS II
AD2745
AD2745.The horizontal coordinates were scaled from a topographic map and have
AD2745.an estimated accuracy of +/- 6 seconds.
AD2745
AD2745.The orthometric height was determined by differential leveling
AD2745.and adjusted by the National Geodetic Survey in June 1991.
AD2745
AD2745.The geoid height was determined by GEOID03.
AD2745
AD2745.The dynamic height is computed by dividing the NAVD 88
AD2745.geopotential number by the normal gravity value computed on the
AD2745.Geodetic Reference System of 1980 (GRS 80) ellipsoid at 45
AD2745.degrees latitude (g = 980.6199 gals.).
AD2745
AD2745.The modeled gravity was interpolated from observed gravity values.
AD2745
AD2745; North East Units Estimated Accuracy
AD2745;SPC FL E - 248,670. 294,310. MT (+/- 180 meters Scaled)
AD2745
AD2745 SUPERSEDED SURVEY CONTROL
AD2745
AD2745 NGVD 29 (09/01/92) 3.182 (m) 10.44 (f) ADJUSTED 1 2
AD2745
AD2745.Superseded values are not recommended for survey control.
AD2745.NGS no longer adjusts projects to the NAD 27 or NGVD 29 datums.
AD2745.See file dsdata.txt to determine how the superseded data were derived.
AD2745
AD2745_U.S. NATIONAL GRID SPATIAL ADDRESS: 17RNK942397(NAD 83)
AD2745_MARKER: DB = BENCH MARK DISK
AD2745_SETTING: 7 = SET IN TOP OF CONCRETE MONUMENT
AD2745_SP_SET: CONCRETE POST
AD2745_STAMPING: Z 34 1933 10.440
AD2745_MARK LOGO: CGS
AD2745_STABILITY: C = MAY HOLD, BUT OF TYPE COMMONLY SUBJECT TO
AD2745+STABILITY: SURFACE MOTION
AD2745_SATELLITE: THE SITE LOCATION WAS REPORTED AS SUITABLE FOR
AD2745+SATELLITE: SATELLITE OBSERVATIONS - October 13, 2004
AD2745
AD2745 HISTORY - Date Condition Report By
AD2745 HISTORY - 1933 MONUMENTED CGS
AD2745 HISTORY - 1965 GOOD NGS
AD2745 HISTORY - 1973 GOOD NGS
AD2745 HISTORY - 1988 GOOD USPSQD
AD2745 HISTORY - 1989 GOOD USPSQD
AD2745 HISTORY - 19910110 GOOD NGS
AD2745 HISTORY - 20041013 GOOD USPSQD
AD2745
AD2745 STATION DESCRIPTION
AD2745'DESCRIBED BY NATIONAL GEODETIC SURVEY 1965
AD2745'0.7 MI S FROM LANTANA.

```

DATASHEETS

AD2745 'ABOUT 0.7 MILE SOUTH ALONG THE FLORIDA EAST COAST RAILWAY FROM
AD2745 'THE CROSSING OF LANTANA AVENUE AT LANTANA, AT MILEPOST 309,
AD2745 'IN SECTION 3, R 43 E, T 45 S, 50.0 FEET EAST OF AND ACROSS THE
AD2745 'TRACK FROM THE MILEPOST, 24.5 FEET WEST OF THE WEST CURB OF
AD2745 'U.S. HIGHWAY 1, 24.5 FEET EAST OF THE EAST RAIL OF THE NORTHBOUND
AD2745 'MAIN TRACK, 1.5 FEET SOUTH OF A METAL WITNESS POST, ABOUT 2
AD2745 'FEET BELOW THE LEVEL OF THE TRACK AND SET IN THE TOP OF A
AD2745 'CONCRETE POST PROJECTING 0.6 FOOT.

AD2745
AD2745 STATION RECOVERY (1973)

AD2745
AD2745 RECOVERY NOTE BY NATIONAL GEODETIC SURVEY 1973
AD2745 RECOVERED IN GOOD CONDITION.

AD2745
AD2745 STATION RECOVERY (1988)

AD2745
AD2745 RECOVERY NOTE BY US POWER SQUADRON 1988 (BJS)
AD2745 RECOVERED IN GOOD CONDITION.

AD2745
AD2745 STATION RECOVERY (1989)

AD2745
AD2745 RECOVERY NOTE BY US POWER SQUADRON 1989 (BJS)
AD2745 RECOVERED IN GOOD CONDITION.

AD2745
AD2745 STATION RECOVERY (1991)

AD2745
AD2745 RECOVERY NOTE BY NATIONAL GEODETIC SURVEY 1991
AD2745 '1.4 KM (0.9 MI) SOUTHERLY ALONG THE FLORIDA EAST COAST RAILROAD FROM
AD2745 'THE INTERSECTION OF LANTANA ROAD (STATE HIGHWAY 812) IN LANTANA, 0.3
AD2745 'KM (0.2 MI) NORTH OF THE INTERSECTION OF HYPOLUXO ROAD, 33.8 M (110.9
AD2745 'FT) SOUTH OF THE EXTENDED CENTER OF STERN STREET, 30.0 M (98.4 FT)
AD2745 'SOUTH-SOUTHWEST OF A UTILITY POLE, 18.8 M (61.7 FT) NORTH-NORTHWEST
AD2745 'OF UTILITY POLE NUMBER 89, 15.7 M (51.5 FT) WEST OF THE CENTERLINE OF
AD2745 'DIXIE HIGHWAY, 12.1 M (39.7 FT) EAST OF RAILROAD MILEPOST 309, 11.1 M
AD2745 '(36.4 FT) NORTH OF A UTILITY POLE WITH A METER BOX, 7.5 M (24.6 FT)
AD2745 'EAST OF THE NEAR RAIL, 3.2 M (10.5 FT) EAST OF THE SOUTHEAST CORNER
AD2745 'OF A POWER BOX, 0.8 M (2.6 FT) NORTHEAST OF A UTILITY PEDESTAL, 0.3 M
AD2745 '(1.0 FT) EAST OF A WITNESS POST, AND THE MONUMENT IS RECESSED 0.1 M
AD2745 '(0.3 FT) BELOW THE GROUND SURFACE.

AD2745
AD2745 STATION RECOVERY (2004)

AD2745
AD2745 RECOVERY NOTE BY US POWER SQUADRON 2004 (AAS)
AD2745 RECOVERED IN GOOD CONDITION.

*** retrieval complete.
Elapsed Time = 00:00:00

PB-847



Nick Miller, Inc.
Date of Photo: May 17, 2005
View: Looking at the well PB-847 facing east

PB-847



Nick Miller, Inc.
Date of Photo: May 17, 2005
View: Close-up of the well PB-847 showing the contractor's markings

PB-847



Nick Miller, Inc.
Date of Photo: May 17, 2005
View: Looking at the benchmark facing east

PB-847



Nick Miller, Inc.
Date of Photo: May 17, 2005
View: A top view of the benchmark

1078

SFUMD

SET CONC. MONUMENT AT
MON. WELL PB 847

PB 847

- SET POURED-IN-PLACE CONC. MONUMENT
- SET MAGNET 1' NORTH OF CONC. MON.
- SET CONC. MON. 9.9' EAST OF BACK OF SIDEWALK
- " " 47.9' NE OF LIGHT POLE (68221030807)
- " " 24' SOUTH OF DE LARGE FICUS TREE
- " " 18.3' WEST OF MONITORING WELL PB 847

STAMPED PB 847
2005

COORDINATES ON CONC. MONUMENT

STATE PLANE 83

NAD 83

N. 260801.929 m

N. 26°41'04".25873

E. 294565.304 m

W. 080°02'59".51574
59"

COORDINATES ON MONITORING WELL PB 847

N. 260802.050 m

N. 26°41'04".25811

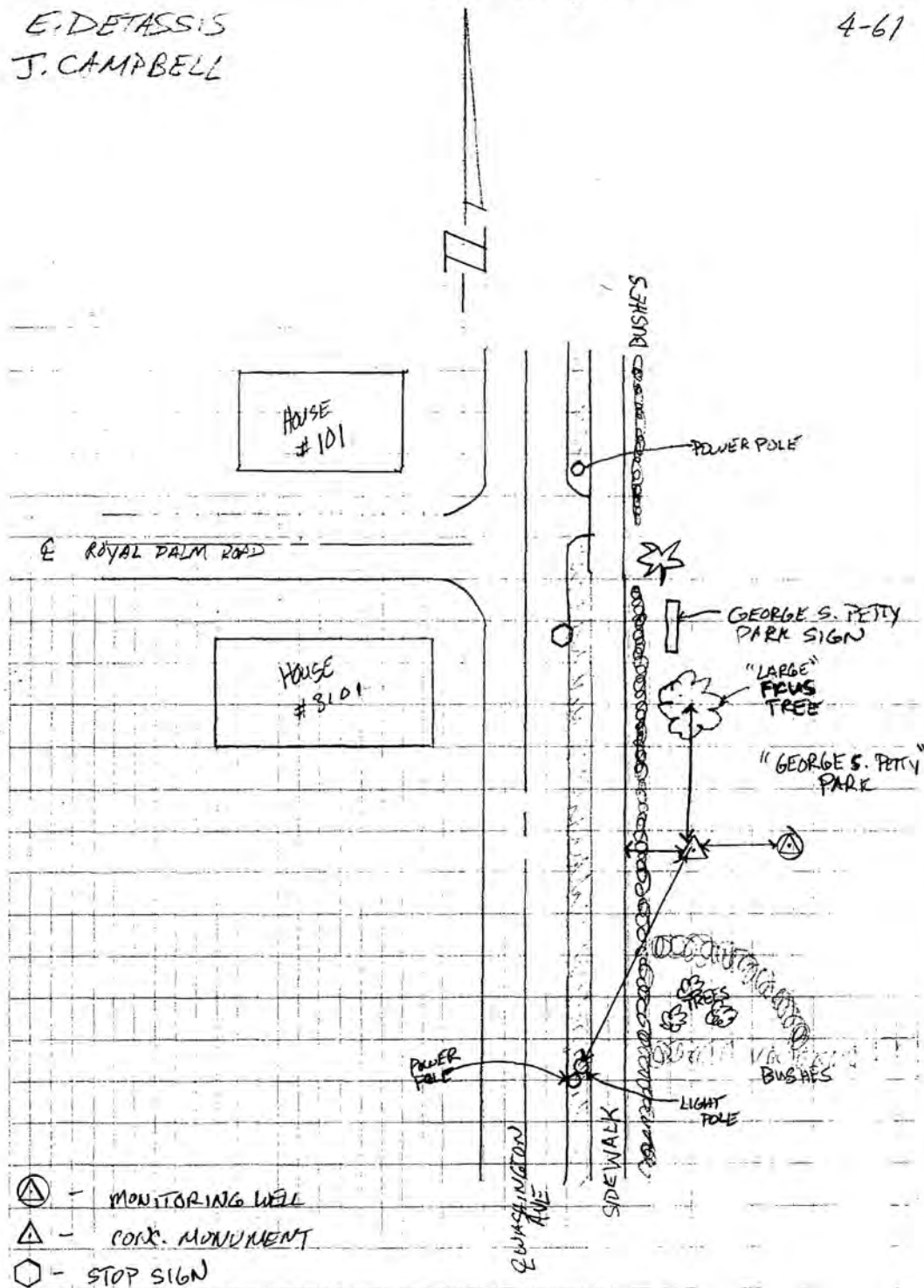
E. 294570.101 m

W. 080°02'59".31549

TUES. MAY 17, 2005

E. DETASSIS
J. CAMPBELL

4-61





SOUTH FLORIDA WATER MANAGEMENT DISTRICT

Rev. 4/01

COUNTY PALM BEACH	PROJECT Hydrology – Palm Beach County Wells	DESIGNATION PB 847 2005
SECTION 34	TOWNSHIP 43 SOUTH	RANGE 43 EAST
GEOGRAPHIC INDEX OF QUAD		
Established by <u>Nick Miller Inc.</u> Recovered by	NAME OF QUADRANGLE Palm Beach	
SURVEYOR <u>Stephen M. Gordon</u> DATE <u>8/26/2005</u>	FIELD BOOK <u>4</u> PAGE <u>61</u>	
HORIZONTAL DATUM: 1927 <input checked="" type="radio"/> 1983 Other _____ (circle one) ZONE <input checked="" type="radio"/> E or W		
STATE PLANE COORDINATES	E 966,410 ft	N 855,639 ft
LATITUDE: N 26.68452°	LONGITUDE: W 80.04987°	
VERTICAL DATUM: MSL 1929 <input checked="" type="radio"/> 1988 Other _____ (circle one)	EL. 3.67 ft	
VERTICAL DATUM: MSL <input checked="" type="radio"/> 1929 1988 Other _____ (circle one)	EL. 5.19 ft	
CONTROL ACCURACY: HORIZONTAL 1 2 3 <input checked="" type="radio"/> SUB-METER (circle one) VERTICAL 1 2 <input checked="" type="radio"/> 3		
DESCRIPTION		
<p>To Reach:</p> <p>FROM INTERSECTION SOUTHERN BLVD. AND WASHINGTON ROAD. GO NORTH ON WASHINGTON ROAD FOR 0.6 MILES TO STOP SIGN OF INTERSECTION WASHINGTON AVE AND ROYAL PALM ROAD. CONCRETE MONUMENT WILL BE ON RIGHT IN GEORGE S. PETTY PARK. 9.9' EAST OF BACK OF SIDEWALK. 47.9' NORTHEAST OF LIGHT POLE (68221030807). 24.0' SOUTH OF LARGE FICUS TREE. 18.3' WEST OF MONITORING WELL PB 847.</p> <p>Benchmarks Used: L 233 and M 233</p> <p>Notable Land marks:</p>		



SOUTH FLORIDA WATER MANAGEMENT DISTRICT

Rev. 4/01

SKETCH

1078

SFWMD

SET CONC. MONUMENT AT
MON. WELL PB 847

PB 847

- SET POURED-IN-PLACE CONC. MONUMENT
- SET MAGNET 1' NORTH OF CONC. MON.
- SET CONC. MON. 7.9' EAST OF EDGE OF SIDEWALK
- " " 47.7' NE OF LIGHT POLE (68221030807)
- " " 24' SOUTH OF LARGE FIGUS TREE
- " " 18.3' WEST OF MONITORING WELL PB 847

STAMPED PB 847
2005

COORDINATES ON CONC. MONUMENT

STATE PLANE 83	WGS 84
N. 260801.929 m	N. 26° 41' 04" 25873
E. 294565.304 m	W. 080° 02' 59" 31576

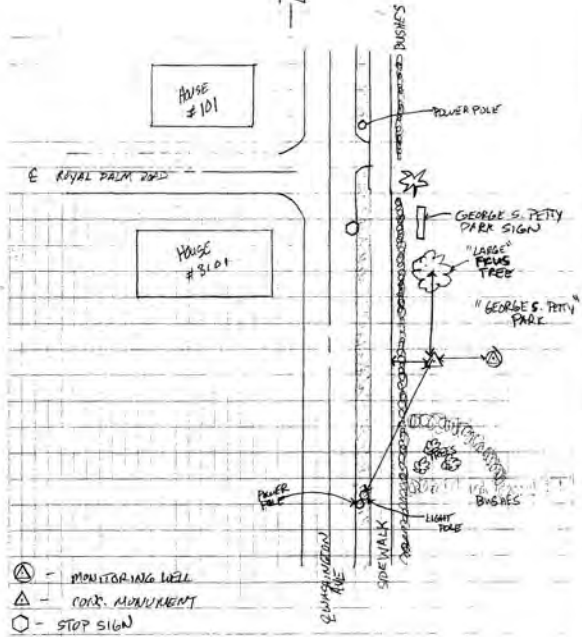
COORDINATES ON MONITORING WELL PB 847

N. 260802.050 m	N. 26° 41' 04" 25811
E. 294570.101 m	W. 080° 02' 59" 31547

E. DETASSIS
J. CAMPBELL

TUES. MAY 17, 2005

4-61



050713-050801 HGZ L26704 8.0 MM ORDER 2 CLASS 2 PAGE 1
 SOUTH FLORIDA WATER MANAGEMENT DISTRICT
 PALM BEACH COUNTY MONITORING WELLS
 ESTABLISH BENCH MARK NEAR MONITORING WELL PB 847

FROM	TO	START	F/B	DIST TOTAL (KM)	ELEV DIFF (MT)	-(F+B) TOTAL (MM)	MEAN DIFF FLD ELEV (MT)	I C
0263 L 233							5.70300	
0263 L 233		7131325	F	1.90	-4.58423 *	1.71	-4.58336	1
0262 PB 847		7190900	F	1.89	-4.58364 *			2
		8010815	B	1.90	4.58222 *			1
		SL 1		1.89		1.71	1.11964	
0263 L 233		7150900	B	1.26	0.54621 *	0.00	-0.54621	2
0264 M 233				1.26		0.00	5.15679♀	

ELEVATION REJECTION AND ERROR CODES

- C - section elevation difference was rejected for cause
 ie. *43* record rejection code set to "F"
- R - section elevation difference was rejected by Halperin rejection algorithm
- @ - section elevation difference does not include refraction correction
- * - section elevation difference does not include rod correction

♀

INSTRUMENT CODE	INSTRUMENT	RODS
1	243 - 332854	396 - 111 396 - 222
2	243 - 332854	396 - 333 396 - 444

♀
 LEVEL LINE SECTION RUNNING TREE

0263 (0262)
 0264♀

FROM	TO	N. LATITUDE	W. LONGITUDE	FIELD DISTANCE	VS. COMPUTED
	0263	264033	0800327	0.00	0.00
0263	0262	264104	0800259	1.89	1.23 **
0263	0264	263952	0800328	1.26	1.26♀

Windows Abstra Versi on 2.3 -- Jan 1, 2004 -- Mon Aug 01 17:22:57 2005

SECTION
 FROM TO ERROR MESSAGES

0263 0262 *** Field distance exceeds computed distance by more than 0.50 KM!

The NGS Data Sheet

See file [dsdata.txt](#) for more information about the datasheet.

```

DATABASE = Sybase ,PROGRAM = datasheet, VERSION = 7.27
1 National Geodetic Survey, Retrieval Date = SEPTEMBER 16, 2005
AD2805 *****
AD2805 DESIGNATION - L 233
AD2805 PID - AD2805
AD2805 STATE/COUNTY- FL/PALM BEACH
AD2805 USGS QUAD - PALM BEACH (1983)
AD2805
AD2805 *CURRENT SURVEY CONTROL
AD2805
AD2805 *-----*
AD2805 * NAD 83(1986)- 26 40 33. (N) 080 03 27. (W) SCALED
AD2805 * NAVD 88 - 5.703 (meters) 18.71 (feet) ADJUSTED
AD2805 *-----*
AD2805 GEOID HEIGHT- -26.39 (meters) GEOID03
AD2805 DYNAMIC HT - 5.694 (meters) 18.68 (feet) COMP
AD2805 MODELED GRAV- 979,117.1 (mgal) NAVD 88
AD2805
AD2805 VERT ORDER - FIRST CLASS I
AD2805
AD2805.The horizontal coordinates were scaled from a topographic map and have
AD2805.an estimated accuracy of +/- 6 seconds.
AD2805
AD2805.The orthometric height was determined by differential leveling
AD2805.and adjusted by the National Geodetic Survey in September 1992.
AD2805.WARNING-Repeat measurements at this control monument indicate possible
AD2805.vertical movement.
AD2805
AD2805.The geoid height was determined by GEOID03.
AD2805
AD2805.The dynamic height is computed by dividing the NAVD 88
AD2805.geopotential number by the normal gravity value computed on the
AD2805.Geodetic Reference System of 1980 (GRS 80) ellipsoid at 45
AD2805.degrees latitude (g = 980.6199 gals.).
AD2805
AD2805.The modeled gravity was interpolated from observed gravity values.
AD2805
AD2805; North East Units Estimated Accuracy
AD2805;SPC FL E - 259,840. 293,810. MT (+/- 180 meters Scaled)
AD2805
AD2805 SUPERSEDED SURVEY CONTROL
AD2805
AD2805 NAVD 88 (06/15/91) 5.715 (m) 18.75 (f) UNKNOWN 1 1
AD2805 NGVD 29 (09/01/92) 6.166 (m) 20.23 (f) ADJUSTED 1 1
AD2805
AD2805.Superseded values are not recommended for survey control.
AD2805.NGS no longer adjusts projects to the NAD 27 or NGVD 29 datums.
AD2805.See file dsdata.txt to determine how the superseded data were derived.
AD2805
AD2805_U.S. NATIONAL GRID SPATIAL ADDRESS: 17RNK937508(NAD 83)
AD2805_MARKER: DB = BENCH MARK DISK
AD2805_SETTING: 38 = SET IN THE ABUTMENT OR PIER OF A LARGE BRIDGE
AD2805_SP_SET: PIER
AD2805_STAMPING: L 233 1965
AD2805_MARK LOGO: CGS
AD2805_MAGNETIC: N = NO MAGNETIC MATERIAL
AD2805_STABILITY: B = PROBABLY HOLD POSITION/ELEVATION WELL
AD2805_SATELLITE: THE SITE LOCATION WAS REPORTED AS SUITABLE FOR
AD2805+SATELLITE: SATELLITE OBSERVATIONS - March 17, 1992
AD2805
AD2805 HISTORY - Date Condition Report By
AD2805 HISTORY - 1965 MONUMENTED CGS
AD2805 HISTORY - 1973 POOR NGS
AD2805 HISTORY - 1983 MARK NOT FOUND USPSQD
AD2805 HISTORY - 1987 MARK NOT FOUND USPSQD
AD2805 HISTORY - 19910114 GOOD NGS
AD2805 HISTORY - 19920317 GOOD NGS
AD2805 HISTORY - 20011110 GOOD USPSQD
AD2805 HISTORY - 20030304 GOOD USPSQD
AD2805 HISTORY - 20040417 GOOD USPSQD

```

AD2805 HISTORY - 20050422 GOOD USPSQD

AD2805

AD2805 STATION DESCRIPTION

AD2805

AD2805 DESCRIBED BY COAST AND GEODETIC SURVEY 1965

AD2805 AT WEST PALM BEACH.

AD2805 AT WEST PALM BEACH, ABOUT 2.95 MILES SOUTH ALONG THE FLORIDA EAST

AD2805 COAST RAILWAY FROM THE PASSENGER STATION, ABOUT 0.1 MILE NORTH

AD2805 OF MILEPOST 302, IN SECTION 34, R 43 E, T 44 S, AT THE U.S.

AD2805 HIGHWAY 98 OVERPASS, SET VERTICALLY IN THE WEST FACE NEAR THE

AD2805 NORTH END OF THE FIRST CONCRETE PIER EAST OF THE MAIN TRACK,

AD2805 1.2 FEET SOUTH OF THE NORTH END OF THE PIER, 8.5 FEET EAST OF THE

AD2805 EAST RAIL OF THE NORTHBOUND MAIN TRACK, ABOUT 3.0 FEET ABOVE THE

AD2805 LEVEL OF THE GROUND AND ABOUT 2 FEET ABOVE THE LEVEL OF THE

AD2805 TRACK. NOTE-- THE RAILWAY PASSENGER STATION NO LONGER EXISTS.

AD2805 MARK IS SECURELY IN PLACE BUT DISK HAS BEEN STRUCK WITH A HEAVY

AD2805 INSTRUMENT.

AD2805

AD2805 STATION RECOVERY (1973)

AD2805

AD2805 RECOVERY NOTE BY NATIONAL GEODETIC SURVEY 1973

AD2805 MARK RECOVERED IN POOR CONDITION.

AD2805

AD2805 STATION RECOVERY (1983)

AD2805

AD2805 RECOVERY NOTE BY US POWER SQUADRON 1983

AD2805 MARK NOT FOUND.

AD2805

AD2805 STATION RECOVERY (1987)

AD2805

AD2805 RECOVERY NOTE BY US POWER SQUADRON 1987 (JSS)

AD2805 MARK NOT FOUND.

AD2805

AD2805 STATION RECOVERY (1991)

AD2805

AD2805 RECOVERY NOTE BY NATIONAL GEODETIC SURVEY 1991

AD2805 IN WEST PALM BEACH, AT THE INTERSECTION OF THE FLORIDA EAST COAST

AD2805 RAILROAD AND U.S. HIGHWAY 98 (SOUTHERN BOULEVARD), SET VERTICALLY IN

AD2805 THE WEST FACE OF THE SECOND COLUMN SOUTH OF THE NORTH END OF THE

AD2805 FIRST PIER EAST OF THE MAIN TRACK OF THE HIGHWAY BRIDGE SPANNING THE

AD2805 RAILROAD, 3.5 M (11.5 FT) SOUTH OF THE NORTH END OF THE PIER, 2.7 M

AD2805 (8.9 FT) EAST OF THE NEAR RAIL, AND 0.9 M (3.0 FT) ABOVE THE GROUND

AD2805 SURFACE.

AD2805

AD2805 STATION RECOVERY (1992)

AD2805

AD2805 RECOVERY NOTE BY NATIONAL GEODETIC SURVEY 1992

AD2805 IN WEST PALM BEACH, AT THE INTERSECTION OF THE FLORIDA EAST COAST

AD2805 RAILROAD AND U.S. HIGHWAY 98 (SOUTHERN BOULEVARD) SET VERTICALLY IN

AD2805 THE WEST FACE OF THE SECOND COLUMN SOUTH OF THE NORTH END OF THE

AD2805 FIRST PIER EAST OF THE MAIN TRACK OF THE HIGHWAY BRIDGE SPANNING THE

AD2805 RAILROAD, 3.5 M (11.5 FT) SOUTH OF THE NORTH END OF THE PIER, 2.7 M

AD2805 (8.9 FT) EAST OF THE NEAR RAIL, AND 0.9 M (3.0 FT) ABOVE THE GROUND

AD2805 SURFACE.

AD2805

AD2805 STATION RECOVERY (2001)

AD2805

AD2805 RECOVERY NOTE BY US POWER SQUADRON 2001 (AAS)

AD2805 MARK PAINTED OVER BUT STILL LEGIBLE

AD2805

AD2805 STATION RECOVERY (2003)

AD2805

AD2805 RECOVERY NOTE BY US POWER SQUADRON 2003 (AAS)

AD2805 RECOVERED IN GOOD CONDITION.

AD2805

AD2805 STATION RECOVERY (2004)

AD2805

AD2805 RECOVERY NOTE BY US POWER SQUADRON 2004 (AAS)

AD2805 RECOVERED IN GOOD CONDITION.

AD2805

AD2805 STATION RECOVERY (2005)

AD2805

AD2805 RECOVERY NOTE BY US POWER SQUADRON 2005 (AAS)

AD2805 RECOVERED IN GOOD CONDITION.

*** retrieval complete.

Elapsed Time = 00:00:00

The NGS Data Sheet

See file [dsdata.txt](#) for more information about the datasheet.

```

PROGRAM = datasheet95, VERSION = 8.7.1
1      National Geodetic Survey,  Retrieval Date = AUGUST 27, 2015
AD2804 *****
AD2804 DESIGNATION - M 233
AD2804 PID - AD2804
AD2804 STATE/COUNTY- FL/PALM BEACH
AD2804 COUNTRY - US
AD2804 USGS QUAD - PALM BEACH (1983)
AD2804
AD2804 *CURRENT SURVEY CONTROL
AD2804
AD2804* NAD 83(1986) POSITION- 26 39 53. (N) 080 03 27. (W) SCALED
AD2804* NAVD 88 ORTHO HEIGHT - 5.147 (meters) 16.89 (feet) ADJUSTED
AD2804
AD2804 GEOID HEIGHT - -26.38 (meters) GEOID12B
AD2804 DYNAMIC HEIGHT - 5.139 (meters) 16.86 (feet) COMP
AD2804 MODELED GRAVITY - 979,116.2 (mgal) NAVD 88
AD2804
AD2804 VERT ORDER - FIRST CLASS II
AD2804
AD2804.The horizontal coordinates were scaled from a topographic map and have
AD2804.an estimated accuracy of +/- 6 seconds.
AD2804.
AD2804.The orthometric height was determined by differential leveling and
AD2804.adjusted by the NATIONAL GEODETIC SURVEY
AD2804.in January 2014.
AD2804
AD2804.The dynamic height is computed by dividing the NAVD 88
AD2804.geopotential number by the normal gravity value computed on the
AD2804.Geodetic Reference System of 1980 (GRS 80) ellipsoid at 45
AD2804.degrees latitude (g = 980.6199 gals.).
AD2804
AD2804.The modeled gravity was interpolated from observed gravity values.
AD2804
AD2804; North East Units Estimated Accuracy
AD2804;SPC FL E - 258,600. 293,820. MT (+/- 180 meters Scaled)
AD2804
AD2804 SUPERSEDED SURVEY CONTROL
AD2804
AD2804 NAVD 88 (09/04/92) 5.150 (m) 16.90 (f) SUPERSEDED 1 1
AD2804 NAVD 88 (06/15/91) 5.150 (m) 16.90 (f) SUPERSEDED 1 1
AD2804 NGVD 29 (??/??/92) 5.615 (m) 18.42 (f) SUPERSEDED 1 1
AD2804 NGVD 29 (09/01/92) 5.615 (m) 18.42 (f) ADJUSTED 1 1
AD2804
AD2804.Superseded values are not recommended for survey control.
AD2804
AD2804.NGS no longer adjusts projects to the NAD 27 or NGVD 29 datums.
AD2804.See file dsdata.txt to determine how the superseded data were derived.
AD2804
AD2804_U.S. NATIONAL GRID SPATIAL ADDRESS: 17RNK937496(NAD 83)
AD2804
AD2804_MARKER: DB = BENCH MARK DISK
AD2804_SETTING: 7 = SET IN TOP OF CONCRETE MONUMENT
AD2804_SP_SET: CONCRETE POST
AD2804_STAMPING: M 233 1965
AD2804_MARK LOGO: CGS
AD2804_PROJECTION: FLUSH

```

DATASHEETS

AD2804_MAGNETIC: M = MARKER EQUIPPED WITH BAR MAGNET
 AD2804_STABILITY: C = MAY HOLD, BUT OF TYPE COMMONLY SUBJECT TO
 AD2804+STABILITY: SURFACE MOTION
 AD2804_SATELLITE: THE SITE LOCATION WAS REPORTED AS SUITABLE FOR
 AD2804+SATELLITE: SATELLITE OBSERVATIONS - August 16, 2006

AD2804

AD2804	HISTORY	- Date	Condition	Report By
AD2804	HISTORY	- 1965	MONUMENTED	CGS
AD2804	HISTORY	- 1973	GOOD	NGS
AD2804	HISTORY	- 1983	GOOD	USPSQD
AD2804	HISTORY	- 1987	GOOD	USPSQD
AD2804	HISTORY	- 19910114	GOOD	NGS
AD2804	HISTORY	- 19920317	GOOD	NGS
AD2804	HISTORY	- 20030401	GOOD	USPSQD
AD2804	HISTORY	- 20040405	GOOD	USPSQD
AD2804	HISTORY	- 20041117	GOOD	FLDEP
AD2804	HISTORY	- 20050408	GOOD	USPSQD
AD2804	HISTORY	- 20060425	GOOD	USPSQD
AD2804	HISTORY	- 20060816	GOOD	FLDEP

AD2804

STATION DESCRIPTION

AD2804

AD2804'DESCRIBED BY COAST AND GEODETIC SURVEY 1965
 AD2804'AT WEST PALM BEACH.
 AD2804'AT WEST PALM BEACH, ABOUT 3.7 MILES SOUTH ALONG THE FLORIDA EAST
 AD2804'COAST RAILWAY FROM THE PASSENGER STATION, ABOUT 0.35 MILE NORTH
 AD2804'OF MILEPOST 303, NEAR THE CROSSING OF BUNKER ROAD, IN SECTION
 AD2804'3, R 43 E, T 44 S, BETWEEN THE SIDEWALK AND THE CURB OF BUNKER
 AD2804'ROAD, 149.0 FEET EAST OF THE EAST RAIL OF THE NORTHBOUND MAIN
 AD2804'TRACK, 120.0 FEET NORTH-NORTHWEST OF THE NORTHWEST CORNER OF THE
 AD2804'BUILDING HOUSING GERMAN MOTORS INC., 2.5 FEET SOUTH OF THE SOUTH
 AD2804'CURB OF THE ROAD, 3.3 FEET NORTH OF THE NORTH EDGE OF THE
 AD2804'SIDEWALK, 1.2 FEET SOUTH OF A SIGN READING NO PARKING, ABOUT LEVEL
 AD2804'WITH THE CURB AND SET IN THE TOP OF A CONCRETE POST FLUSH WITH
 AD2804'THE GROUND. NOTE-- THE RAILWAY PASSENGER STATION NO LONGER
 AD2804'EXISTS.

AD2804

STATION RECOVERY (1973)

AD2804

AD2804'RECOVERY NOTE BY NATIONAL GEODETIC SURVEY 1973
 AD2804'RECOVERED IN GOOD CONDITION.

AD2804

STATION RECOVERY (1983)

AD2804

AD2804'RECOVERY NOTE BY US POWER SQUADRON 1983
 AD2804'RECOVERED IN GOOD CONDITION.

AD2804

STATION RECOVERY (1987)

AD2804

AD2804'RECOVERY NOTE BY US POWER SQUADRON 1987 (JSS)
 AD2804'RECOVERED IN GOOD CONDITION.

AD2804

STATION RECOVERY (1991)

AD2804

AD2804'RECOVERY NOTE BY NATIONAL GEODETIC SURVEY 1991
 AD2804'IN WEST PALM BEACH, AT THE INTERSECTION OF THE FLORIDA EAST COAST
 AD2804'RAILROAD AND BUNKER ROAD, 45.3 M (148.6 FT) EAST OF THE NEAR RAIL,
 AD2804'36.7 M (120.4 FT) WEST OF THE NORTHWEST CORNER OF THE PALM BEACH BODY
 AD2804'SHOP, 26.9 M (88.3 FT) EAST OF THE EXTENDED CENTER OF NORTON AVENUE,
 AD2804'21.6 M (70.9 FT) EAST OF A CHAIN-LINK FENCE CORNER, 7.5 M (24.6 FT)
 AD2804'SOUTH OF AND LEVEL WITH THE ROAD CENTERLINE, 2.6 M (8.5 FT) NORTH OF
 AD2804'A WITNESS POST AND FENCE, 1.1 M (3.6 FT) NORTH OF THE NORTH EDGE OF A
 AD2804'SIDEWALK, 0.9 M (3.0 FT) SOUTH OF A CURB, AND THE MONUMENT IS FLUSH
 AD2804'WITH THE GROUND SURFACE.

AD2804

STATION RECOVERY (1992)

AD2804

AD2804

AD2804'RECOVERY NOTE BY NATIONAL GEODETIC SURVEY 1992
AD2804'IN WEST PALM BEACH, AT THE INTERSECTION OF THE FLORIDA EAST COAST
AD2804'RAILROAD AND BUNKER ROAD, 45.3 M (148.6 FT) EAST OF THE NEAR RAIL,
AD2804'36.7 M (120.4 FT) WEST OF THE NORTHWEST CORNER OF THE PALM BEACH BODY
AD2804'SHOP, 26.9 M (88.3 FT) EAST OF THE EXTENDED CENTER OF NORTON AVENUE,
AD2804'21.6 M (70.9 FT) EAST OF A CHAIN-LINK FENCE CORNER, 7.5 M (24.6 FT)
AD2804'SOUTH OF AND LEVEL WITH THE ROAD CENTERLINE, 2.6 M (8.5 FT) NORTH OF
AD2804'A WITNESS POST AND FENCE, 1.1 M (3.6 FT) NORTH OF THE NORTH EDGE OF A
AD2804'SIDEWALK, 0.9 M (3.0 FT) SOUTH OF THE SOUTH CURB OF THE ROAD, AND THE
AD2804'MONUMENT IS FLUSH WITH THE GROUND SURFACE.

AD2804

AD2804 STATION RECOVERY (2003)

AD2804

AD2804'RECOVERY NOTE BY US POWER SQUADRON 2003 (AAS)
AD2804'RECOVERED IN GOOD CONDITION.

AD2804

AD2804 STATION RECOVERY (2004)

AD2804

AD2804'RECOVERY NOTE BY US POWER SQUADRON 2004 (AAS)
AD2804'RECOVERED IN GOOD CONDITION.

AD2804

AD2804 STATION RECOVERY (2004)

AD2804

AD2804'RECOVERY NOTE BY FL DEPT OF ENV PRO 2004 (JLM)
AD2804'RECOVERED IN GOOD CONDITION.

AD2804'

AD2804'NOTE A MAGNET WAS IMBEDDED IN THE GROUND ON THE SOUTH SIDE OF THE
AD2804'MONUMENT.

AD2804

AD2804 STATION RECOVERY (2005)

AD2804

AD2804'RECOVERY NOTE BY US POWER SQUADRON 2005 (AAS)
AD2804'RECOVERED IN GOOD CONDITION.

AD2804

AD2804 STATION RECOVERY (2006)

AD2804

AD2804'RECOVERY NOTE BY US POWER SQUADRON 2006 (AAS)
AD2804'RECOVERED IN GOOD CONDITION.

AD2804

AD2804 STATION RECOVERY (2006)

AD2804

AD2804'RECOVERY NOTE BY FL DEPT OF ENV PRO 2006 (JRH)
AD2804'RECOVERED AS DESCRIBED.

*** retrieval complete.

Elapsed Time = 00:00:04