



PB 888		Elevation:	7.12 ft	(NAVD 88)	8.65 ft	(NGVD 29)
Bench Mark 1:	K 402		15.68 ft	(NAVD 88)	17.22 ft	(NGVD 29)
Bench Mark 2:	P 233		14.98 ft	(NAVD 88)	16.50 ft	(NGVD 29)
Bench Mark 3:	J 402		7.00 ft	(NAVD 88)	8.54 ft	(NGVD 29)
Monitoring Well:	PB 888		6.49 ft	(NAVD 88)	8.02 ft	(NGVD 29)
Monitoring Well:	PB 889		6.52 ft	(NAVD 88)	8.05 ft	(NGVD 29)
Length of Run:	4.35 km	To Reach PB 888: FROM INTERSECTION OF 6 TH AVE. AND US HWY 1. GO EAST ON 6 TH AVE FOR 0.40 MILE TO SOUTH PALMWAY. GO SOUTH ON SOUTH PALM WAY FOR +/- 150 FEET. CONCRETE MONUMENT WILL BE ON LEFT 7.9' WEST OF MONITORING WELL PB 888/889 52.3' SOUTH OF LIGHT POLE (SE 588 SU 30). 18.3' EAST OF CENTERLINE SOUTH PALM WAY. 31.25' NW OF STREET SIGN (STOP AHEAD). MAGNET SET 1' NORTH OF CONCRETE MONUMENT.				
Max Allowable Misclosure:	16 mm					
Actual Misclosure:	16 mm					
						

PB 1097		Elevation:	24.66 ft	(NAVD 88)	26.16 ft	(NGVD 29)
Bench Mark 1:	V 536		24.08 ft	(NAVD 88)	25.58 ft	(NGVD 29)
Bench Mark 2:	PB 41		19.06 ft	(NAVD 88)	20.56 ft	(NGVD 29)
Monitoring Well 1:	PB 1097		24.67 ft	(NAVD 88)	26.17 ft	(NGVD 29)
Monitoring Well 2:	PB 1632		25.13 ft	(NAVD 88)	26.63 ft	(NGVD 29)
Length of Run:	1.80 km	To Reach PB 1097: FROM INTERSECTION US 441 HWY & 120 TH STREET (ARTHUR R. MARSHALL WILDLIFE REFUGEE PARK ENTRANCE) GO WEST ON 120TH STREET FOR 1.0 MILE. GO THROUGH NORTH S.F.W.M.D. LOCKED GATE. GO NORTH ON LEVEE ROAD FOR 2.0 MILES TO MARK ON RIGHT. 3.5' WEST OF EAST TOP OF BANK, 110' SOUTH OF MONITORING WELLS PB 1097/1632. 22' EAST OF CENTERLINE LEVEE ROAD. SET MAGNET 1' NORTH OF CONCRETE MONUMENT.				
Max Allowable Misclosure:	10 mm					
Actual Misclosure:	3 mm					
						

PB-888/889



Nick Miller, Inc.
Date of Photo: May 5, 2005
View: Looking at the well facing south

PB-888/889



Nick Miller, Inc.
Date of Photo: May 5, 2005
View: Close-up of the well showing the contractor's markings

PB-888/889



Nick Miller, Inc.

Date of Photo: May 5, 2005

View: Looking at the benchmark facing south

PB-888/889



Nick Miller, Inc.
Date of Photo: May 5, 2005
View: A top view of the benchmark

107B

SFWMD

COLLECTING DATA ON MONITORING
WELLS

PB 1525

- CONCRETE POURED-IN-PLACE MONUMENT REF: PG. 6
- SFWMD ALUM. DISK SET IN MONUMENT
- MAGNET SET IN CONCRETE MONUMENT

ELEVATION ON MONITORING WELL PB 1525 1

STA	+	H.I.	-	R.	DESC.
BM	6.15	22.15		16.00	SFWMD ALUM. DISK
		6.03		16.12	M.W. PB 1525 (BLACK MARK)
		5.54		21.66	" " "
BM			5.66	16.00	SFWMD ALUM. DISK
BM	5.54	21.54 21.66		16.00	SFWMD ALUM. DISK
			5.41	16.13 16.25	M.W. PB 1525 (BLACK MARK)
		4.54		20.67 20.79	" " "
			4.67	16.0	" " "
BM			4.67	16.0	SFWMD ALUM. DISK

- BLACK MARK ON NORTH SIDE OF M.W. PVC PIPE

COORDINATES ON SET MONUMENT

US STATE PLANE 1983

METERS	US SURVEY FEET
N. 282694.199	N. 927473.217
E. 278554.693	E. 913891.734

NAD 1984

METERS	US SURVEY FEET
N. 26° 52' 59".064	N. 26° 52' 59".069
W. 080° 12' 33".629	W. 080° 12' 33".661

FRI. JANUARY 14, 2005

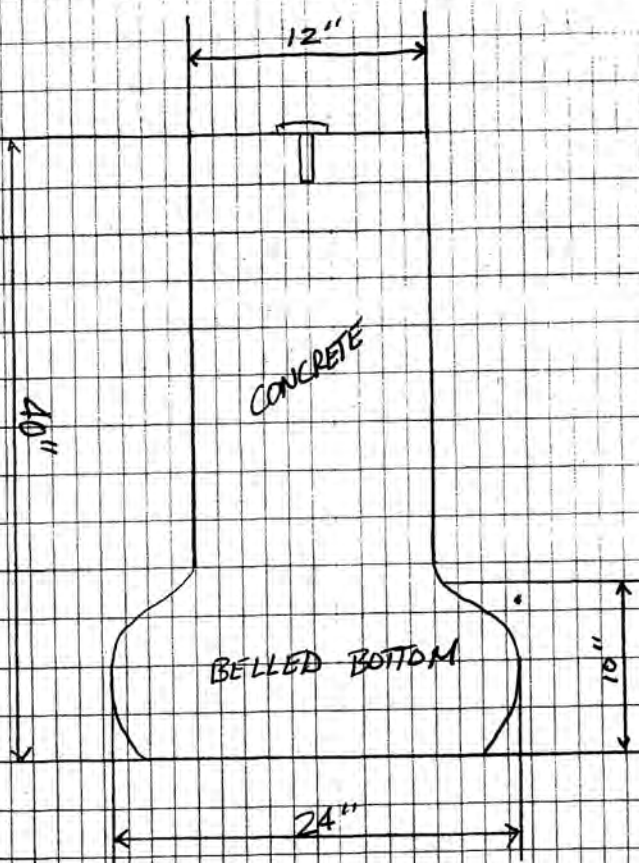
-33

J. SZULEWSKI

E. DETASSIS

G. RHEERTH

POURED-IN-PLACE CONCRETE MONUMENT



COORDINATES ON M.W. PB 1525

STATE PLANE 1983

METERS	US SURVEY FEET
282694.299	N. 927473.417
278556.528	E. 913897.589

NAD 1984

METERS	US SURVEY FEET
26° 52' 59".064	N. 26° 52' 59".073
080° 12' 33".562	W. 080° 12' 33".536

1078

SFWMD

SETTING CONC. MONUMENTS
AT MONITORING WELL SITE

889
PB 888/8889

REF: SFWMD FB. 1 PAGE 33

SET POURED-IN-PLACE CONC. MON. BY MONITORING WELLS

SET MAGNET 1' N. OF CONC. MON.

- SET CONC. MON. 7.9' WEST OF PB 888/889 MONITORING WELLS
- " " " 52.3' SOUTH OF LP (SEE 588 SU 30)
- " " " 18.3' EAST OF ♀ SOUTH PALMWAY
- SET CONC. MON. 31.25' NW OF STREET SIGN

STAMPED: PB 888
2005

COORDINATES ON MONITORING WELLS PB 888/889

STATE PLANE 1983

WGS 84

N. 252310.531 m

N. 26° 36' 28.38118"

E. 294509.808 m

W. 080° 03' 03.75481"

COORDINATES ON CONC. MONUMENT

STATE PLANE 1983

WGS 84

N. 252310.306 m

N. 26° 36' 28.37099"

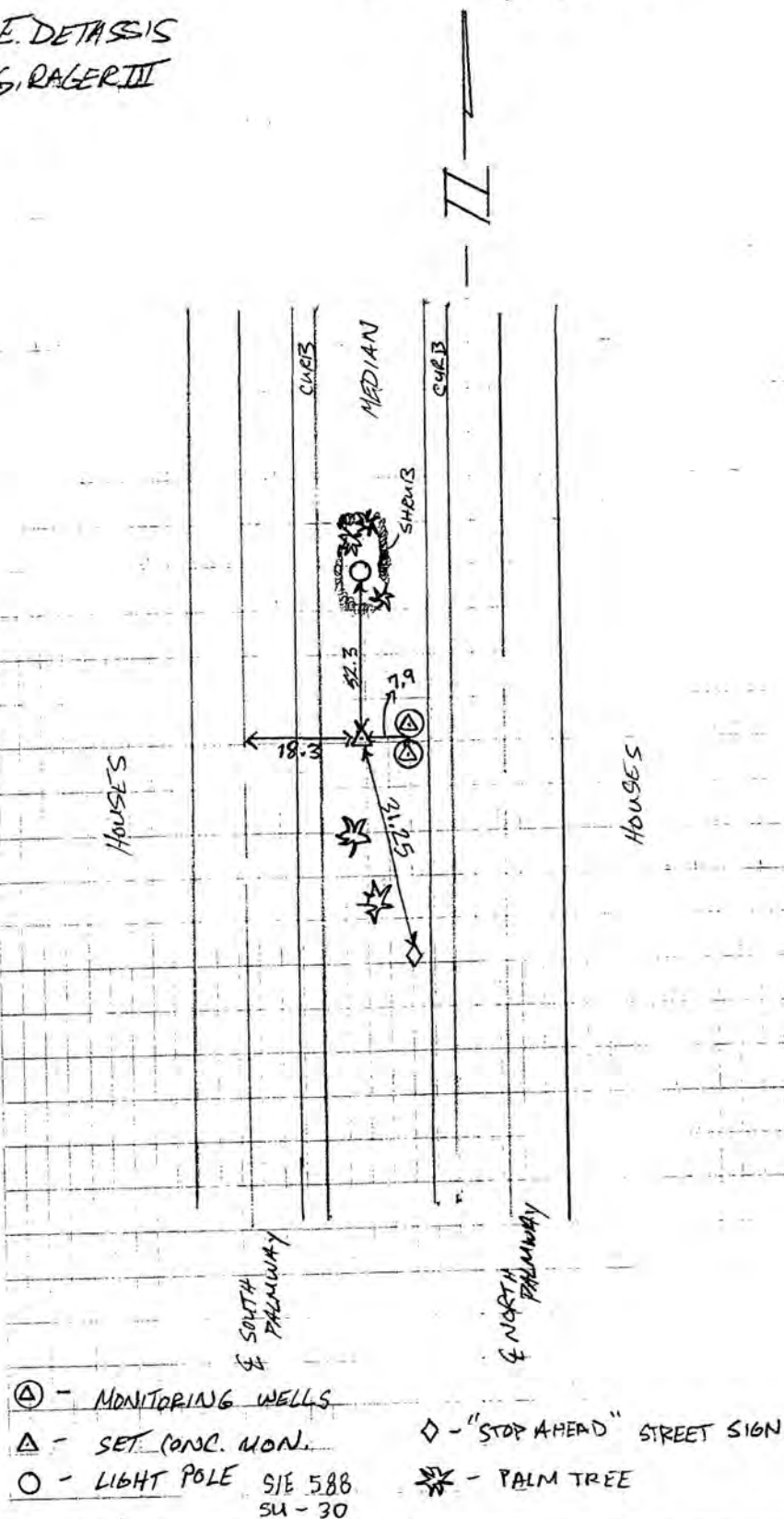
E. 294507.723 m

W. 080° 03' 03.84908"

THRU. MAY 5, 2005

4,44

E. DETASSIS
G. RALERT III



Ⓐ - MONITORING WELLS

△ - SET CONC. MON.

○ - LIGHT POLE S/E 588
SU - 30

◇ - "STOP AHEAD" STREET SIGN

★ - PALM TREE



SOUTH FLORIDA WATER MANAGEMENT DISTRICT

Rev. 4/01

COUNTY PALM BEACH		PROJECT Hydrology – Palm Beach County Wells		DESIGNATION PB 888 2005	
SECTION 27		TOWNSHIP 44 SOUTH		RANGE 43 EAST	
GEOGRAPHIC INDEX OF QUAD					
Established by <u>Nick Miller Inc.</u> Recovered by			NAME OF QUADRANGLE LAKE WORTH		
SURVEYOR <u>Stephen M. Gordon</u> DATE <u>5/5/2005</u>			FIELD BOOK <u>4</u> PAGE <u>44</u>		
HORIZONTAL DATUM: 1927 <input checked="" type="radio"/> 1983 Other _____ (circle one) ZONE <input checked="" type="radio"/> E or W					
VERTICAL DATUM: MSL 1929 <input checked="" type="radio"/> 1988 Other _____ (circle one)					
CONTROL ACCURACY: HORIZONTAL 1 2 3 <input checked="" type="radio"/> SUB-METER (circle one) VERTICAL 1 2 <input checked="" type="radio"/> 3					
STATE PLANE COORDINATES		E 827,788 ft	N 966,237 ft	EL. 7.12 ft	
LATITUDE N 26.60788°			LONGITUDE W 80.05107°		
DESCRIPTION					
To Reach: FROM INTERSECTION OF 6 TH AVE. AND US HWY 1. GO EAST ON 6 TH AVE FOR 0.40 MILE TO SOUTH PALMWAY. GO SOUTH ON SOUTH PALM WAY FOR +/- 150 FEET. CONCRETE MONUMENT WILL BE ON LEFT 7.9' WEST OF MONITORING WELL PB 888/889 52.3' SOUTH OF LIGHT POLE (SE 588 SU 30). 18.3' EAST OF CENTERLINE SOUTH PALM WAY. 31.25' NW OF STREET SIGN (STOP AHEAD). MAGNET SET 1' NORTH OF CONCRETE					
Notable Land marks:					



SOUTH FLORIDA WATER MANAGEMENT DISTRICT

Rev. 4/01

SKETCH

1078

SFWMD

SETTING CONC. MONUMENTS
AT MONITORING WELL SITE

⁸⁸⁹
PB 888/889

REF: K SFWMD FB. 1 PAGE X 33
SET POURED-IN-PLACE CONC. MON. BY MONITORING WELLS
SET MAGNET 1' N. OF CONC. MON.

- SET CONC. MON. 7.9' WEST OF PB888/889 MONITORING WELLS
- " " " 52.3' SOUTH OF LP (SE588 SU80)
- " " " 18.3' EAST OF E SOUTH PALMWAY
- SET CONC. MON. 31.25' N.W. OF STREET SIGN

STAMPED: PB 888
2005

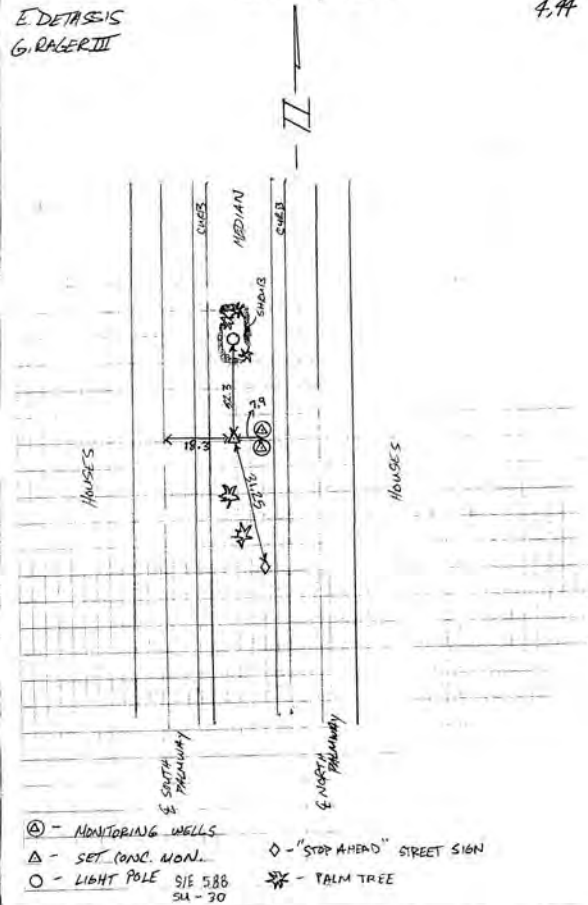
COORDINATES ON MONITORING WELLS PB888/889
STATE PLANE 1983 WGS 84
N. 252310.531 m N 26° 36' 28.32119"
E 294509.908 m W 080° 03' 03.75481"

COORDINATES ON CONC. MONUMENT
STATE PLANE 1983 WGS 84
N. 252310.306 m N 26° 36' 28.37099"
E 294507.723 m W 080° 03' 03.84908"

THRU. MAY 5, 2005

444

E. DETASSEIS
G. RAGER III



- ⊗ - MONITORING WELLS
- △ - SET CONC. MON.
- - LIGHT POLE S/E 588 SU-70
- ◇ - "STOP AHEAD" STREET SIGN
- ★ - PALM TREE

PB-1097 & 1632



Nick Miller, Inc.
Date of Photo: May 6, 2005
View: Looking at the well facing north

PB-1097 & 1632



Nick Miller, Inc.
Date of Photo: May 6, 2005
View: Looking at the benchmark facing south

PB-1097 & 1632



View: Close-up of the well PB-1097 showing the contractor's markings

**Nick Miller, Inc.
Date of Photo: May 6, 2005**

PB-1097 & 1632



View: Close-up of the well PB 1632 showing the contractor's markings

**Nick Miller, Inc.
Date of Photo: May 6, 2005**

PB-1097 & 1632



Nick Miller, Inc.
Date of Photo: May 6, 2005
View: A top view of the benchmark

1078

SFLWMD

SETTING CONC. MONUMENTS
AT WET MONITORING WELL SITES

PB 1097/1632

SET POURED-IN-PLACE CONC. MON BY MONITORING WELL
SET MAGNET 1' NORTH OF CONC. MON.

- SET CONC. MON. 3.5' WEST OF EAST TOP OF BANK
- " " " 11' SOUTH OF MONITORING WELL
- " " " 22' EAST OF E. LEVEE ROAD

STAMPED PB 1097
2005

COORDINATES ON MONITORING WELL PB 1097/1632

STATE PLANE 83

WGS 84

N. 243517.117 m

N. $26^{\circ} 31' 46''$.49472

E. 276913.964 m

W. $080^{\circ} 13' 41''$.65272

COORDINATES ON CONC. MON.

STATE PLANE 83

WGS 84

N. 243512.4594

N. $26^{\circ} 31' 46''$.36648

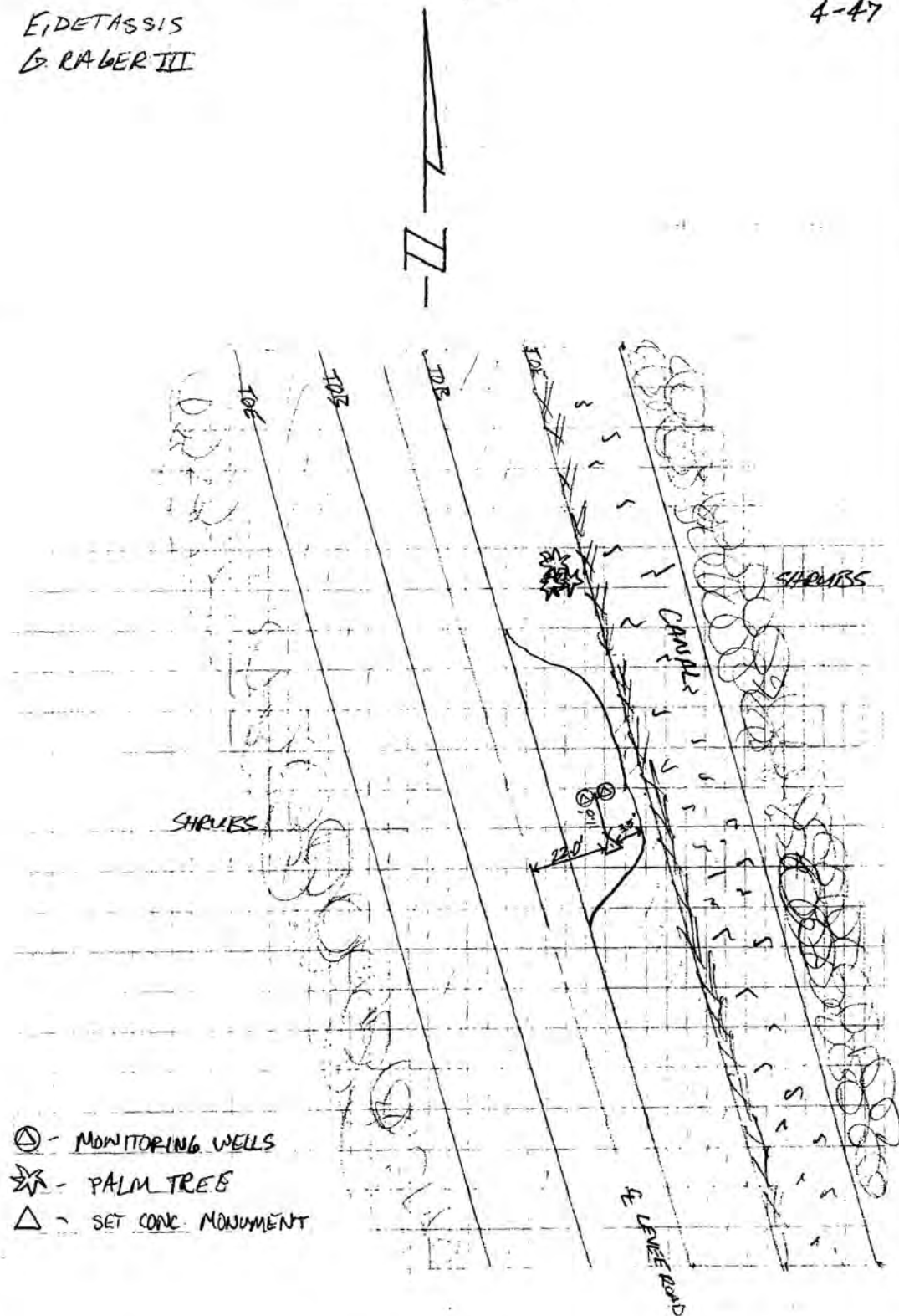
E. 276915.101

W. $080^{\circ} 13' 41''$.62132

FRI. MAY 6, 2005

4-47

EIDETASSIS
G. RABER III



- ⊗ - MONITORING WELLS
- ✱ - PALM TREE
- △ - SET CONC. MONUMENT



SOUTH FLORIDA WATER MANAGEMENT DISTRICT

Rev. 4/01

COUNTY	PALM BEACH		PROJECT	Hydrology – Palm Beach County Wells		DESIGNATION	PB 1097 2005	
SECTION	23		TOWNSHIP	45 SOUTH		RANGE	41 EAST	
GEOGRAPHIC INDEX OF QUAD								
Established by <u>Nick Miller Inc.</u> Recovered by				NAME OF QUADRANGLE GREENACRES CITY				
SURVEYOR <u>Stephen M. Gordon</u> DATE <u>5/6/2005</u>				FIELD BOOK <u>4</u> PAGE <u>47</u>				
HORIZONTAL DATUM: 1927 <input checked="" type="radio"/> 1983 Other _____ (circle one) ZONE <input checked="" type="radio"/> E or W								
STATE PLANE COORDINATES			E 798,924 ft			N 908,512 ft		
LATITUDE: N 26.52955°			LONGITUDE: W 80.22823°					
VERTICAL DATUM: MSL 1929 <input checked="" type="radio"/> 1988 Other _____ (circle one)						EL. 24.66 ft		
VERTICAL DATUM: MSL <input checked="" type="radio"/> 1929 1988 Other _____ (circle one)						EL. 26.16 ft		
CONTROL ACCURACY: HORIZONTAL 1 2 3 <input checked="" type="radio"/> SUB-METER (circle one) VERTICAL 1 2 <input checked="" type="radio"/> 3								
DESCRIPTION								
To Reach:								
FROM INTERSECTION US 441 HWY & 120 TH STREET (ARTHUR R. MARSHALL WILDLIFE REFUGEE PARK ENTRANCE) GO WEST ON 120TH STREET FOR 1.0 MILE. GO THROUGH NORTH S.F.W.M.D. LOCKED GATE. GO NORTH ON LEVEE ROAD FOR 2.0 MILES TO MARK ON RIGHT. 3.5 FEET WEST OF EAST TOP OF BANK, 110 FEET SOUTH OF MONITORING WELLS PB 1097/1632. 22 FEET EAST OF CENTERLINE LEVEE ROAD. SET MAGNET 1 FOOT NORTH OF CONCRETE MONUMENT.								
Benchmarks Used: V 536 and PB 41								
Notable Land marks:								



SOUTH FLORIDA WATER MANAGEMENT DISTRICT

Rev. 4/01

SKETCH

1078

STWMD

SETTING CONC. MONUMENTS
AT MT MONITORING WELL SITES

PB 1097/1632

SET POURED-IN-PLACE CONC. MON BY MONITORING WELL
SET MARKER 1' NORTH OF CONC. MON.

- SET CONC. MON. 3.5' WEST OF EAST TOP OF BANK
- " " " 11' SOUTH OF MONITORING WELL
- " " " 72' EAST OF E. LEVEE ROAD

STAMPED PB 1097
2005

COORDINATES ON MONITORING WELL PB 1097/1632

STATE PLANE 83	WGS 84
N. 242517.117 m	N. 26° 31' 46.49472
E. 276913.964 m	W. 090° 13' 41.65272

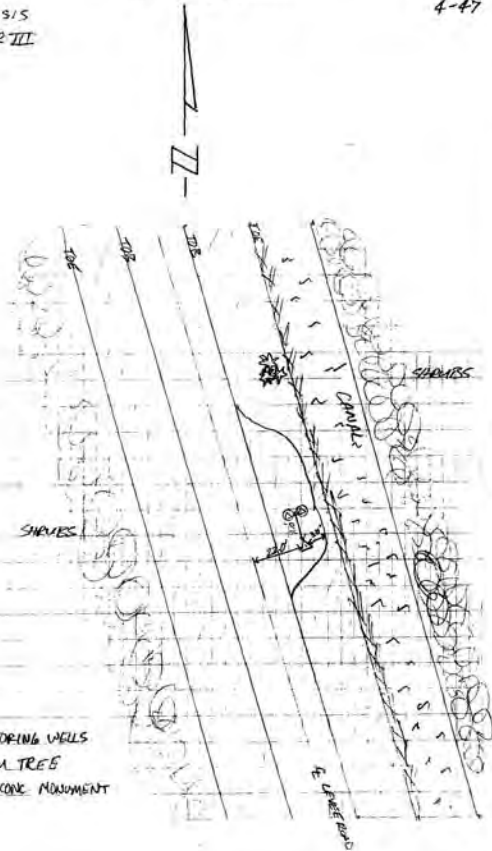
COORDINATES ON CONC. MON.

STATE PLANE 83	WGS 84
N. 243512.4594	N. 26° 31' 46.36648
E. 276915.101	W. 090° 13' 41.62132

FRI. MAY 6, 2005

E. DETASSIS
G. RAUER III

4-47



- ⊙ - MONITORING WELLS
- ★ - PALM TREES
- △ - SET CONC. MONUMENT

-*- FIELD ABSTRACT -*-

050511-050511 HGZ L26803 8.0 MM ORDER 2 CLASS 2 PAGE 1
 SOUTH FLORIDA WATER MANAGEMENT DISTRICT
 PALM BEACH COUNTY MONITORING WELLS
 ESTABLISH BENCH MARK NEAR MONITORING WELL PB-1097 AND PB-1632

FROM TO	START	F/B	DIST TOTAL (KM)	ELEV DIFF (MT)	-(F+B) TOTAL (MM)	MEAN DIFF FLD ELEV (MT)	I C
0212 V 536						7.34000	
0212 V 536	5111130	F	0.27	0.17514 *	-0.58	0.17485	1
0210 PB 1097	5111440	B	0.27	-0.17456 *		7.51485	1
			0.27		-0.58		
0210 PB 1097	5111300	F	1.53	-1.70185 *	0.00	-1.70185	1
0211 PB 41			1.80		-0.58	5.81300♀	

ELEVATION REJECTION AND ERROR CODES

- C - section elevation difference was rejected for cause i.e. *43* record rejection code set to "F"
- R - section elevation difference was rejected by Halperin rejection algorithm
- @ - section elevation difference does not include refraction correction
- * - section elevation difference does not include rod correction

♀

INSTRUMENT CODE	INSTRUMENT	RODS
1	243 - 331132	396 - 111 396 - 222

♀
 LEVEL LINE SECTION RUNNING TREE

FROM	TO	N. LATITUDE	W. LONGITUDE	FIELD DISTANCE	VS. COMPUTED
0212		263137	0801338	0.00	0.00
0210		263146	0801341	0.27	0.29
0211♀		263228	0801358	1.53	1.38♀

SECTION FROM TO ERROR MESSAGES

The NGS Data Sheet

See file [dsdata.txt](#) for more information about the datasheet.

DATABASE = Sybase ,PROGRAM = datasheet, VERSION = 7.27

1 National Geodetic Survey, Retrieval Date = SEPTEMBER 16, 2005

AJ8757 *****

AJ8757 DESIGNATION - V 536
 AJ8757 PID - AJ8757
 AJ8757 STATE/COUNTY- FL/PALM BEACH
 AJ8757 USGS QUAD - GREENACRES CITY (1983)
 AJ8757
 AJ8757 *CURRENT SURVEY CONTROL
 AJ8757
 AJ8757* NAD 83(1999)- 26 31 37.97053(N) 080 13 38.73099(W) ADJUSTED
 AJ8757* NAVD 88 - 7.340 (meters) 24.08 (feet) ADJUSTED
 AJ8757
 AJ8757 X - 969,280.799 (meters) COMP
 AJ8757 Y - -5,627,596.203 (meters) COMP
 AJ8757 Z - 2,831,434.795 (meters) COMP
 AJ8757 LAPLACE CORR- -2.61 (seconds) DEFLEC99
 AJ8757 ELLIP HEIGHT- -18.30 (meters) (12/12/02) GPS OBS
 AJ8757 GEOID HEIGHT- -25.62 (meters) GEOID03
 AJ8757 DYNAMIC HT - 7.328 (meters) 24.04 (feet) COMP
 AJ8757 MODELED GRAV- 979,101.9 (mgal) NAVD 88
 AJ8757
 AJ8757 HORZ ORDER - FIRST
 AJ8757 VERT ORDER - FIRST CLASS II
 AJ8757 ELLP ORDER - THIRD CLASS I
 AJ8757

AJ8757.The horizontal coordinates were established by GPS observations
 AJ8757.and adjusted by the National Geodetic Survey in December 2002.

AJ8757.The orthometric height was determined by differential leveling
 AJ8757.and adjusted by the National Geodetic Survey in May 2002.

AJ8757.The X, Y, and Z were computed from the position and the ellipsoidal ht.

AJ8757.The Laplace correction was computed from DEFLEC99 derived deflections.

AJ8757.The ellipsoidal height was determined by GPS observations
 AJ8757.and is referenced to NAD 83.

AJ8757.The geoid height was determined by GEOID03.

AJ8757.The dynamic height is computed by dividing the NAVD 88
 AJ8757.geopotential number by the normal gravity value computed on the
 AJ8757.Geodetic Reference System of 1980 (GRS 80) ellipsoid at 45
 AJ8757.degrees latitude (g = 980.6199 gals.).

AJ8757.The modeled gravity was interpolated from observed gravity values.

	North	East	Units	Scale	Factor	Converg.
AJ8757;SPC FL E	- 243,254.391	276,996.780	MT	1.00001434	+0 20	42.2
AJ8757;UTM 17	- 2,934,303.375	576,970.509	MT	0.99967314	+0 20	42.2
AJ8757!	- Elev Factor	x Scale Factor	=	Combined Factor		
AJ8757!SPC FL E	- 1.00000288	x 1.00001434	=	1.00001722		
AJ8757!UTM 17	- 1.00000288	x 0.99967314	=	0.99967601		

AJ8757
 AJ8757 SUPERSEDED SURVEY CONTROL

AJ8757 NAVD 88 (12/12/02) 7.34 (m) 24.1 (f) LEVELING 3

AJ8757.Superseded values are not recommended for survey control.
 AJ8757.NGS no longer adjusts projects to the NAD 27 or NGVD 29 datums.
 AJ8757.[See file dsdata.txt](#) to determine how the superseded data were derived.

AJ8757
 AJ8757_U.S. NATIONAL GRID SPATIAL ADDRESS: 17RNK7697134303(NAD 83)
 AJ8757_MARKER: DD = SURVEY DISK
 AJ8757_SETTING: 7 = SET IN TOP OF CONCRETE MONUMENT
 AJ8757_STAMPING: V 536 2001 CERP
 AJ8757_MARK LOGO: USE

AJ8757_PROJECTION: RECESSED 12 CENTIMETERS
 AJ8757_MAGNETIC: O = OTHER; SEE DESCRIPTION
 AJ8757_STABILITY: C = MAY HOLD, BUT OF TYPE COMMONLY SUBJECT TO
 AJ8757+STABILITY: SURFACE MOTION
 AJ8757_SATELLITE: THE SITE LOCATION WAS REPORTED AS SUITABLE FOR
 AJ8757+SATELLITE: SATELLITE OBSERVATIONS - April 21, 2002

AJ8757	HISTORY	- Date	Condition	Report By
AJ8757	HISTORY	- 20010918	MONUMENTED	MOREKL
AJ8757	HISTORY	- 20020205	GOOD	FLDEP
AJ8757	HISTORY	- 20020421	GOOD	MAPTEC

AJ8757
 AJ8757 STATION DESCRIPTION

AJ8757'DESCRIBED BY MORGAN AND EKLUND INC 2001 (MAB)
 AJ8757'THE STATION IS LOCATED ABOUT 26.7 KM (16.6 MILES) NORTH NORTHWEST OF
 AJ8757'DEERFIELD BEACH,
 AJ8757'ABOUT 15.8 KM (9.8 MILES) WEST OF BOYNTON BEACH, ABOUT 18.2 KM (11.3
 AJ8757'MILES) SOUTH SOUTHEAST
 AJ8757'OF LOXAHATCHEE IN SECTION 23, TOWNSHIP 45 SOUTH, RANGE 41 EAST.
 AJ8757'
 AJ8757'OWNERSHIP SOUTH FLORIDA WATER MANAGEMENT DISTRICT.
 AJ8757'
 AJ8757'TO REACH THE STATION FROM THE INTERSECTION OF STATE ROAD 804 (BOYNTON
 AJ8757'BEACH BLVD.) AND
 AJ8757'STATE ROAD 7 / U.S. 441, GO SOUTH ON STATE ROAD 7 / U.S. 441 FOR 3.2
 AJ8757'KM (2.0 MILES) TO THE
 AJ8757'INTERSECTION OF LEE ROAD AND STATE ROAD 7 / U.S. 441, TURN RIGHT AND
 AJ8757'GO WEST ON LEE ROAD
 AJ8757'FOR 1.6 KM (1.0 MILES) TO THE END AT THE ARTHUR R. MARSHALL
 AJ8757'LOXAHATCHEE WILDLIFE REFUGE,
 AJ8757'TURN RIGHT AND GO NORTH ON L-40 LEVEE, PASSING THROUGH ACCESS GATE FOR
 AJ8757'3.3 KM (2.05
 AJ8757'MILES) TO THE MARK IN THE CENTERLINE OF L-40 LEVEE.
 AJ8757'
 AJ8757'THE MARK IS 57.3 METERS (188.0 FEET) NORTH OF THE CENTERLINE OF A DIM
 AJ8757'ROAD LEADING EAST,
 AJ8757'50.3 METERS (165.0 FEET) NORTH OF A METAL WITNESS POST, 4.6 METERS
 AJ8757'(15.0 FEET) WEST OF A
 AJ8757'CARSONITE WITNESS POST AND 241 METERS (0.15 MILES) NORTH OF A FLOOD
 AJ8757'CONTROL STRUCTURE.
 AJ8757'
 AJ8757'NOTE A MAGNET WAS PLACED 0.21 METERS (0.7 FEET) SOUTH OF AND 0.1
 AJ8757'METERS (0.3 FEET) BELOW
 AJ8757' THE MARK.

AJ8757'
 AJ8757'
 AJ8757'
 AJ8757'
 AJ8757'
 AJ8757' STATION RECOVERY (2002)

AJ8757'RECOVERY NOTE BY FL DEPT OF ENV PRO 2002 (PBM)
 AJ8757'RECOVERED AS DESCRIBED.

AJ8757'
 AJ8757' STATION RECOVERY (2002)

AJ8757'RECOVERY NOTE BY MAPTECH INCORPORATED 2002 (CDP)
 AJ8757'THE STATION IS LOCATED ABOUT 26.7 KM (16.6 MILES) NORTH NORTHWEST OF
 AJ8757'DEERFIELD BEACH,
 AJ8757'ABOUT 15.8 KM (9.8 MILES) WEST OF BOYNTON BEACH, ABOUT 18.2 KM (11.3
 AJ8757'MILES) SOUTH SOUTHEAST
 AJ8757'OF LOXAHATCHEE IN SECTION 23, TOWNSHIP 45 SOUTH, RANGE 41 EAST.
 AJ8757'
 AJ8757'OWNERSHIP SOUTH FLORIDA WATER MANAGEMENT DISTRICT.
 AJ8757'
 AJ8757'TO REACH THE STATION FROM THE INTERSECTION OF STATE ROAD 804 (BOYNTON
 AJ8757'BEACH BLVD.) AND
 AJ8757'STATE ROAD 7 / U.S. 441, GO SOUTH ON STATE ROAD 7 / U.S. 441 FOR 3.2
 AJ8757'KM (2.0 MILES) TO THE
 AJ8757'INTERSECTION OF LEE ROAD AND STATE ROAD 7 / U.S. 441, TURN RIGHT AND
 AJ8757'GO WEST ON LEE ROAD
 AJ8757'FOR 1.6 KM (1.0 MILES) TO THE END AT THE ARTHUR R. MARSHALL
 AJ8757'LOXAHATCHEE WILDLIFE REFUGE,
 AJ8757'TURN RIGHT AND GO NORTH ON L-40 LEVEE, PASSING THROUGH ACCESS GATE FOR
 AJ8757'3.3 KM (2.05
 AJ8757'MILES) TO THE MARK IN THE CENTERLINE OF L-40 LEVEE.
 AJ8757'

AJ8757'THE MARK IS 57.3 METERS (188.0 FEET) NORTH OF THE CENTERLINE OF A DIM
 AJ8757'ROAD LEADING EAST,
 AJ8757'50.3 METERS (165.0 FEET) NORTH OF A METAL WITNESS POST, 4.6 METERS
 AJ8757'(15.0 FEET) WEST OF A

DATASHEETS

AJ8757' CARSONITE WITNESS POST AND 241 METERS (0.15 MILES) NORTH OF A FLOOD
AJ8757' CONTROL STRUCTURE.
AJ8757'
AJ8757' NOTE A MAGNET WAS PLACED 0.21 METERS (0.7 FEET) SOUTH OF AND 0.1
AJ8757' METERS (0.3 FEET) BELOW
AJ8757' THE MARK.
AJ8757'
AJ8757'
AJ8757' STATION RECOVERY (2002)
AJ8757' RECOVERY NOTE BY MAPTECH, INCORPORATED 2002 (CDP)
AJ8757' RECOVERED AS DESCRIBED.
AJ8757'
AJ8757'

*** retrieval complete.
Elapsed Time = 00:00:01

The NGS Data Sheet

See file [dsdata.txt](#) for more information about the datasheet.

DATABASE = Sybase ,PROGRAM = datasheet, VERSION = 7.27

1 National Geodetic Survey, Retrieval Date = SEPTEMBER 16, 2005

AJ8797 *****

AJ8797 DESIGNATION - PB 41

AJ8797 PID - AJ8797

AJ8797 STATE/COUNTY- FL/PALM BEACH

AJ8797 USGS QUAD - GREENACRES CITY (1983)

AJ8797

AJ8797 *CURRENT SURVEY CONTROL

AJ8797* NAD 83(1999)- 26 32 28.92108(N) 080 13 58.34001(W) ADJUSTED

AJ8797* NAVD 88 - 5.810 (meters) 19.06 (feet) ADJUSTED

AJ8797

AJ8797 X - 968,626.729 (meters) COMP

AJ8797 Y - -5,626,996.639 (meters) COMP

AJ8797 Z - 2,832,837.041 (meters) COMP

AJ8797 LAPLACE CORR- -2.55 (seconds) DEFLEC99

AJ8797 ELLIP HEIGHT- -19.80 (meters) (12/12/02) GPS OBS

AJ8797 GEOID HEIGHT- -25.62 (meters) GEOID03

AJ8797 DYNAMIC HT - 5.801 (meters) 19.03 (feet) COMP

AJ8797 MODELED GRAV- 979,103.2 (mgal) NAVD 88

AJ8797

AJ8797 HORZ ORDER - FIRST

AJ8797 VERT ORDER - FIRST CLASS II

AJ8797 ELLP ORDER - THIRD CLASS I

AJ8797

AJ8797.The horizontal coordinates were established by GPS observations

AJ8797.and adjusted by the National Geodetic Survey in December 2002.

AJ8797

AJ8797.The orthometric height was determined by differential leveling

AJ8797.and adjusted by the National Geodetic Survey in May 2002.

AJ8797

AJ8797.The X, Y, and Z were computed from the position and the ellipsoidal ht.

AJ8797

AJ8797.The Laplace correction was computed from DEFLEC99 derived deflections.

AJ8797

AJ8797.The ellipsoidal height was determined by GPS observations

AJ8797.and is referenced to NAD 83.

AJ8797

AJ8797.The geoid height was determined by GEOID03.

AJ8797

AJ8797.The dynamic height is computed by dividing the NAVD 88

AJ8797.geopotential number by the normal gravity value computed on the

AJ8797.Geodetic Reference System of 1980 (GRS 80) ellipsoid at 45

AJ8797.degrees latitude (g = 980.6199 gals.).

AJ8797

AJ8797.The modeled gravity was interpolated from observed gravity values.

AJ8797

AJ8797;

	North	East	Units	Scale	Factor	Converg.
AJ8797;SPC FL E	- 244,819.217	276,444.523	MT	1.00001330	+0 20	34.1
AJ8797;UTM 17	- 2,935,867.668	576,418.441	MT	0.99967210	+0 20	34.1

AJ8797;UTM 17 - 2,935,867.668 576,418.441 MT 0.99967210 +0 20 34.1

AJ8797

AJ8797! - Elev Factor x Scale Factor = Combined Factor

AJ8797!SPC FL E - 1.00000311 x 1.00001330 = 1.00001641

AJ8797!UTM 17 - 1.00000311 x 0.99967210 = 0.99967521

AJ8797

AJ8797

AJ8797 |-----|

AJ8797 | PID Reference Object Distance Geod. Az

AJ8797 | | | | dddmmss.s

AJ8797 | AD6707 BOSWELL 77.008 METERS 35205

AJ8797 |-----|

AJ8797

AJ8797 SUPERSEDED SURVEY CONTROL

AJ8797

AJ8797 NAVD 88 (12/12/02) 5.81 (m) 19.1 (f) LEVELING 3

AJ8797

AJ8797.Superseded values are not recommended for survey control.

AJ8797.NGS no longer adjusts projects to the NAD 27 or NGVD 29 datums.

AJ8797.[See file dsdata.txt](#) to determine how the superseded data were derived.

AJ8797
 AJ8797 U.S. NATIONAL GRID SPATIAL ADDRESS: 17RNK7641835868(NAD 83)
 AJ8797 MARKER: DD = SURVEY DISK
 AJ8797 SETTING: 36 = SET IN A MASSIVE STRUCTURE
 AJ8797 SP_SET: HEADWALL
 AJ8797 STAMPING: PB-41 1978 BM
 AJ8797 MARK LOGO: SFLWMD
 AJ8797 MAGNETIC: N = NO MAGNETIC MATERIAL
 AJ8797 STABILITY: B = PROBABLY HOLD POSITION/ELEVATION WELL
 AJ8797 SATELLITE: THE SITE LOCATION WAS REPORTED AS SUITABLE FOR
 AJ8797+SATELLITE: SATELLITE OBSERVATIONS - April 21, 2002

AJ8797	HISTORY	- Date	Condition	Report By
AJ8797	HISTORY	- 1978	MONUMENTED	SFLWMD
AJ8797	HISTORY	- 20011015	GOOD	MOREKL
AJ8797	HISTORY	- 20020421	GOOD	MAPTEC

AJ8797
 AJ8797 STATION DESCRIPTION

AJ8797 DESCRIBED BY MORGAN AND EKLUND INC 2001 (MAB)
 AJ8797 THE STATION IS LOCATED ABOUT 28.3 KM (17.6 MILES) NORTH NORTHWEST OF
 AJ8797 DEERFIELD BEACH,
 AJ8797 ABOUT 16.5 KM (10.2 MILES) WEST NORTHWEST OF BOYNTON BEACH, ABOUT 16.5
 AJ8797 KM (10.2 MILES)
 AJ8797 SOUTH SOUTHEAST OF LOXAHATCHEE IN SECTION 23, TOWNSHIP 45 SOUTH, RANGE
 AJ8797 41 EAST.

AJ8797 OWNERSHIP SOUTH FLORIDA WATER MANAGEMENT DISTRICT.

AJ8797 TO REACH THE STATION FROM THE INTERSECTION OF STATE ROAD 804 (BOYNTON
 AJ8797 BEACH BLVD.) AND
 AJ8797 STATE ROAD 7 / U.S. 441, GO SOUTH ON STATE ROAD 7 / U.S. 441 FOR 3.2
 AJ8797 KM (2.0 MILES) TO THE
 AJ8797 JUNCTION WITH LEE ROAD, TURN RIGHT AND GO WEST ON LEE ROAD FOR 1.6 KM
 AJ8797 (1 MILE) TO ITS END
 AJ8797 AT L-40 LEVEE AND THE LOXAHATCHEE NATIONAL WILDLIFE REFUGE, TURN RIGHT
 AJ8797 AND GO NORTH ON
 AJ8797 L-40 LEVEE, PASSING THROUGH ACCESS GATE FOR 4.9 KM (3.05 MILES) AND
 AJ8797 THE MARK ON THE LEFT.

AJ8797 THE MARK IS 11.3 METERS (37.0 FEET) WEST OF THE CENTERLINE OF L-40
 AJ8797 LEVEE, 4.6 METERS (15.0
 AJ8797 FEET) NORTH OF THE SOUTH END OF A 2.3 FOOT WIDE CONCRETE HEADWALL
 AJ8797 RUNNING NORTH TO
 AJ8797 SOUTH AT FLOOD CONTROL STRUCTURE G-94C, 0.4 METERS (1.2 FEET) SOUTH OF
 AJ8797 THE NORTH END OF
 AJ8797 A 2.3 FOOT WIDE CONCRETE HEADWALL RUNNING NORTH - SOUTH AT FLOOD
 AJ8797 CONTROL STRUCTURE
 AJ8797 G-94C AND 0.5 METERS (1.7 FEET) SOUTH OF A CARSONITE WITNESS POST.

AJ8797
 AJ8797
 AJ8797
 AJ8797
 AJ8797 STATION RECOVERY (2002)

AJ8797 RECOVERY NOTE BY MAPTECH INCORPORATED 2002 (CDP)
 AJ8797 THE STATION IS LOCATED ABOUT 28.3 KM (17.6 MILES) NORTH NORTHWEST OF
 AJ8797 DEERFIELD BEACH,
 AJ8797 ABOUT 16.5 KM (10.2 MILES) WEST NORTHWEST OF BOYNTON BEACH, ABOUT 16.5
 AJ8797 KM (10.2 MILES)
 AJ8797 SOUTH SOUTHEAST OF LOXAHATCHEE IN SECTION 23, TOWNSHIP 45 SOUTH, RANGE
 AJ8797 41 EAST.

AJ8797 OWNERSHIP SOUTH FLORIDA WATER MANAGEMENT DISTRICT.

AJ8797 TO REACH THE STATION FROM THE INTERSECTION OF STATE ROAD 804 (BOYNTON
 AJ8797 BEACH BLVD.) AND
 AJ8797 STATE ROAD 7 / U.S. 441, GO SOUTH ON STATE ROAD 7 / U.S. 441 FOR 3.2
 AJ8797 KM (2.0 MILES) TO THE
 AJ8797 JUNCTION WITH LEE ROAD, TURN RIGHT AND GO WEST ON LEE ROAD FOR 1.6 KM
 AJ8797 (1 MILE) TO ITS END
 AJ8797 AT L-40 LEVEE AND THE LOXAHATCHEE NATIONAL WILDLIFE REFUGE, TURN RIGHT
 AJ8797 AND GO NORTH ON
 AJ8797 L-40 LEVEE, PASSING THROUGH ACCESS GATE FOR 4.9 KM (3.05 MILES) AND
 AJ8797 THE MARK ON THE LEFT.

AJ8797 THE MARK IS 11.3 METERS (37.0 FEET) WEST OF THE CENTERLINE OF L-40
 AJ8797 LEVEE, 4.6 METERS (15.0
 AJ8797 FEET) NORTH OF THE SOUTH END OF A 2.3 FOOT WIDE CONCRETE HEADWALL
 AJ8797 RUNNING NORTH TO
 AJ8797 SOUTH AT FLOOD CONTROL STRUCTURE G-94C, 0.4 METERS (1.2 FEET) SOUTH OF

DATASHEETS

AJ8797'THE NORTH END OF
AJ8797'A 2.3 FOOT WIDE CONCRETE HEADWALL RUNNING NORTH - SOUTH AT FLOOD
AJ8797'CONTROL STRUCTURE
AJ8797'G-94C AND 0.5 METERS (1.7 FEET) SOUTH OF A CARSONITE WITNESS POST.
AJ8797'
AJ8797'
AJ8797'STATION RECOVERY (2002)
AJ8797'RECOVERY NOTE BY MAPTECH, INCORPORATED 2002 (CDP)
AJ8797'RECOVERED AS DESCRIBED.
AJ8797'
AJ8797'

*** retrieval complete.
Elapsed Time = 00:00:00