

Polk Co Wells

FB# 1

ELEV.

BM

5.06
2.21
7.27

4.56
2.73
7.29

55.69

TOTAL + = 34.41 ✓

TOTAL - = (31.85) ✓

DIFF + (2.56) ✓

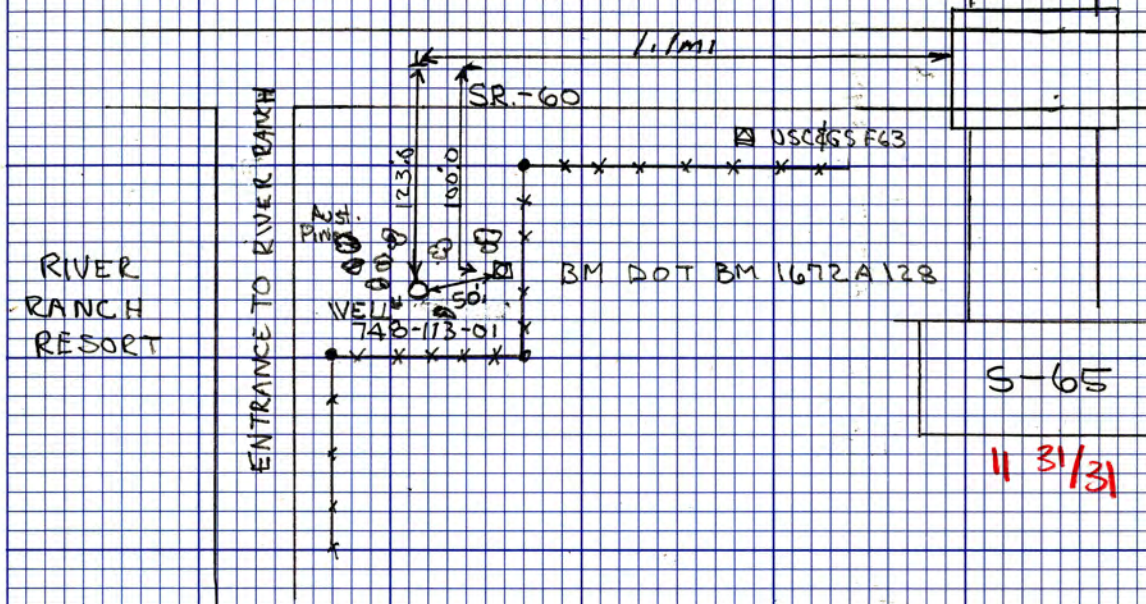
POLK CO WELLS FB# 1

2

BM 152 DOT BM MON# 1672A128 it is 1.1mi West of
the KISSIMMEE River Bridge on SR 60 100' S of Q SR-60
1.5 W of A NES Fence WELLS BENCH are in a CLUMP OF
AUSTRALIAN PINE

5/1/79

□ HOLLIN
○ SHARP
○ WELLS



S-65

11 3/31

NOTE

WELL HAS NO PUMP ON
it just a cap it is a 4" WELL
and rises 3" above natural
ground

POLK CO WELLS FB#1

+ π — ELEV
 RETURN LEVELS FROM WELL # 748-113-01
 TO USQ/GS F63

BM	5.59		4.48
IP	1.70		2.79
	<u>7.29</u>		<u>7.27</u>

	5.12		4.90
IP	2.15		2.39
	<u>7.27</u>		<u>7.29</u>

	4.71		5.16
IP	2.58		2.11
	<u>7.29</u>		<u>7.27</u>

	5.08		4.64
IP	2.19		2.65
	<u>7.27</u>		<u>7.29</u>

	5.09		5.99
IP	2.20		1.28
	<u>7.29</u>		<u>7.27</u>

BM DOT BM MON 1672A12B IS PER PG 2 THIS BOOK

POLK CO WELLS FB #1

	+	-	ELEV
B.M.	4.13	7.11	
	3.14	6.18	
	<u>7.27</u>	<u>13.29</u>	

TOTAL + = (29.72) TOTAL - = (32.28)

DIFF = - (2.56)

USG 865 MON FGS

TOTAL 1ST RUN = +2.56

TOTAL RET RUN = -2.56

ERROR = 0.00

SOUTH FLORIDA WATER MANAGEMENT DISTRICT



Survey Data Entry and Retrieval Application (SDERA) Print Output

Control Point Search Results

Derived Data - Denoted By: **

Designation	1672A128	Record State	ACCEPTED
NGS PID			
Project Name	POF5 WELL SITE	Date Entered/Updated	12/14/2015
Updated By	hehmke	Status	GOOD
Party Chief		Type	V
Monument Set By	FL DEPT OF TRANSPORTATION	Date Established	
County	POLK COUNTY	Section	15
Township	31	Range	31
Quadrangle	LAKE MARIAN SW	Offset (29 to 88)	
NGS Source BM		CCR Link	
Ctrl Pt Source(s)			

Horizontal	NAD 1927	NAD 1983	Vertical	NGVD 1929	NAVD 1988
Latitude		27 48 16.12	Class		
Longitude		81 13 01.53	Order	3	3
Northing(Y)			Elevation	55.69	54.492
Easting(X)			Measurement Unit	Feet	Feet
Class					
Order					
NAD83 Adj Year					

Field Book
Polk County Wells 2

Field Book Pages
2

Stamping

How to Reach
 ***** Recovery Note *****
 5/1/79 Hollin field book Polk County wells 1 page 2 BM is DOT BM mon #1672A128 is 1.1 miles West of the Kissimmee River bridge on State Road 60, 100 feet South of the center line of State Road 60, 1.8 feet West of a North/South fence, well and bench are in a clump of Australian pines. (9-apr-08 HJE)
 10/17/1977 Paul Rankin, field book Polk County Wells 4, page 1, BM 1672A128 DOT with SFWMD El. as per page 2 Polk County Wells field book 1

 Station is located on the South side of State Road 60, East of the intersection of said State Road 60 and River Ranch Acres Road; Said River Ranch Acres Road is approximately 1.2 miles West of the Kissimmee River.
 Source Benchmark NGS F63 (AF6116)

Description

DISCLAIMER:
The South Florida Water Management District (hereinafter referred to as the DISTRICT) shall

not be held liable for improper or incorrect use of the data, information, apparatus, products, processes or materials described and/or contained herein. These data, information, apparatus, products, processes, materials and related graphics are not legal documents and are not intended to be used as such. The user hereby recognizes that the information, data, apparatus, products, processes and materials are dynamic and may change over time without notice. However, the DISTRICT makes no commitment to update the information, data, apparatus, products, processes or materials contained herein.

The NGS Data Sheet

See file [dsdata.txt](#) for more information about the datasheet.

```

PROGRAM = datasheet95, VERSION = 8.8
1      National Geodetic Survey,      Retrieval Date = DECEMBER 14, 2015
AF6116 *****
AF6116 DESIGNATION - F 63
AF6116 PID - AF6116
AF6116 STATE/COUNTY- FL/POLK
AF6116 COUNTRY - US
AF6116 USGS QUAD - LAKE MARIAN SW (1972)
AF6116
AF6116 *CURRENT SURVEY CONTROL
AF6116
AF6116* NAD 83(1986) POSITION- 27 48 16. (N) 081 12 38. (W) SCALED
AF6116* NAVD 88 ORTHO HEIGHT - 15.829 (meters) 51.93 (feet) ADJUSTED
AF6116
AF6116 GEOID HEIGHT - -26.909 (meters) GEOID12B
AF6116 DYNAMIC HEIGHT - 15.806 (meters) 51.86 (feet) COMP
AF6116 MODELED GRAVITY - 979,150.6 (mgal) NAVD 88
AF6116
AF6116 VERT ORDER - FIRST CLASS II
AF6116
AF6116.The horizontal coordinates were scaled from a topographic map and have
AF6116.an estimated accuracy of +/- 6 seconds.
AF6116.
AF6116.The orthometric height was determined by differential leveling and
AF6116.adjusted by the NATIONAL GEODETIC SURVEY
AF6116.in May 2008.
AF6116
AF6116.Significant digits in the geoid height do not necessarily reflect accuracy.
AF6116.GEOID12B height accuracy estimate available here.
AF6116
AF6116.The dynamic height is computed by dividing the NAVD 88
AF6116.geopotential number by the normal gravity value computed on the
AF6116.Geodetic Reference System of 1980 (GRS 80) ellipsoid at 45
AF6116.degrees latitude (g = 980.6199 gals.).
AF6116
AF6116.The modeled gravity was interpolated from observed gravity values.
AF6116
AF6116; North East Units Estimated Accuracy
AF6116;SPC FL W - 384,790. 277,790. MT (+/- 180 meters Scaled)
AF6116
AF6116 SUPERSEDED SURVEY CONTROL
AF6116
AF6116 NAVD 88 (06/15/91) 15.827 (m) 51.93 (f) SUPERSEDED 2 0
AF6116 NGVD 29 (??/??/92) 16.194 (m) 53.13 (f) SUPERSEDED 2 0
AF6116 NGVD 29 (09/01/92) 16.194 (m) 53.13 (f) ADJUSTED 2 0
AF6116
AF6116.Superseded values are not recommended for survey control.
AF6116
AF6116.NGS no longer adjusts projects to the NAD 27 or NGVD 29 datums.
AF6116.See file dsdata.txt to determine how the superseded data were derived.
AF6116
AF6116_U.S. NATIONAL GRID SPATIAL ADDRESS: 17RML792755(NAD 83)
AF6116
AF6116_MARKER: DB = BENCH MARK DISK
AF6116_SETTING: 7 = SET IN TOP OF CONCRETE MONUMENT
AF6116_STAMPING: F 63 1934
AF6116_MARK LOGO: CGS

```


AF6116_PROJECTION: FLUSH
 AF6116_MAGNETIC: N = NO MAGNETIC MATERIAL
 AF6116_STABILITY: C = MAY HOLD, BUT OF TYPE COMMONLY SUBJECT TO
 AF6116+STABILITY: SURFACE MOTION
 AF6116_SATELLITE: THE SITE LOCATION WAS REPORTED AS SUITABLE FOR
 AF6116+SATELLITE: SATELLITE OBSERVATIONS - May 06, 2008

AF6116

HISTORY	- Date	Condition	Report By	
AF6116	HISTORY	- 1934	MONUMENTED	CGS
AF6116	HISTORY	- 1960	GOOD	CGS
AF6116	HISTORY	- 1973	GOOD	NGS
AF6116	HISTORY	- 1983	GOOD	FLDNR
AF6116	HISTORY	- 19970726	GOOD	FLDEP
AF6116	HISTORY	- 20070414	GOOD	FLDEP
AF6116	HISTORY	- 20080506	GOOD	PICKET

AF6116

AF6116 STATION DESCRIPTION

AF6116

AF6116'DESCRIBED BY COAST AND GEODETIC SURVEY 1960

AF6116'25.4 MI E FROM LAKE WALES.

AF6116'25.4 MILES EAST ALONG STATE HIGHWAY 60 FROM THE ATLANTIC COAST

AF6116'LINE RAILROAD STATION AT LAKE WALES, 0.7 MILE WEST OF THE WEST

AF6116'END OF THE CONCRETE HIGHWAY BRIDGE OVER KISSIMMEE RIVER, 0.3 MILE

AF6116'WEST OF A 30-FOOT BRIDGE OVER A SWAMP, BETWEEN THE 3RD. AND 4TH.

AF6116'TELEPHONE POLES WEST OF THE BRIDGE, 50 FEET SOUTH OF THE CENTER

AF6116'LINE OF HIGHWAY, 103 1/2 FEET WEST-NORTHWEST OF THE 4TH. POLE WEST

AF6116'OF THE BRIDGE, (POLE NO. 17-187), 14 FEET NORTH OF AN EAST-WEST

AF6116'FENCE LINE, 2 FEET WEST OF A CONCRETE WITNESS POST, ABOUT 4

AF6116'FEET BELOW THE LEVEL OF THE HIGHWAY, AND SET IN TOP OF A CONCRETE

AF6116'POST PROJECTING 1 INCH. STEEL WITNESS POST WAS SET NEARBY.

AF6116

AF6116 STATION RECOVERY (1973)

AF6116

AF6116'RECOVERY NOTE BY NATIONAL GEODETIC SURVEY 1973

AF6116'RECOVERED IN GOOD CONDITION.

AF6116

AF6116 STATION RECOVERY (1983)

AF6116

AF6116'RECOVERY NOTE BY FL DEPT OF NAT RES 1983

AF6116'RECOVERED IN GOOD CONDITION.

AF6116

AF6116 STATION RECOVERY (1997)

AF6116

AF6116'RECOVERY NOTE BY FL DEPT OF ENV PRO 1997 (JLM)

AF6116'THE MARK IS ABOUT 25.0 MI (40.2 KM) EAST-SOUTHEAST OF LAKE WALES, 55.0

AF6116'MI (88.5 KM) NORTH-NORTHWEST OF VERO BEACH ON STATE ROAD 60 IN SECTION

AF6116'10, TOWNSHIP 31 SOUTH, RANGE 31 EAST. TO REACH THE MARK FROM THE

AF6116'INTERSECTION OF STATE ROAD 27 AND STATE ROAD 60 IN LAKE WALES, GO

AF6116'EAST-SOUTHEAST ON STATE ROAD 60 FOR 25.7 MI (41.4 KM) TO THE JUNCTION

AF6116'OF RIVER RANCH BOULEVARD ON THE RIGHT, CONTINUE EAST ON STATE ROAD 60

AF6116'FOR 0.5 MI (0.8 KM) TO THE MARK ON THE RIGHT, SET IN TOP OF A ROUND

AF6116'CONCRETE MONUMENT FLUSH WITH THE GROUND AND 4.0 FT (1.2 M) BELOW THE

AF6116'LEVEL OF THE ROAD. LOCATED 257.3 FT (78.4 M) WEST OF POWER POLE NUMBER

AF6116'17-187, 87.4 FT (26.6 M) EAST OF POWER POLE NUMBER 17-188, 50.0 FT

AF6116'(15.2 M) SOUTH OF THE CENTERLINE OF STATE ROAD 60 AND 1.0 FT (0.3 M)

AF6116'SOUTH OF A METAL WITNESS POST.

AF6116

AF6116 STATION RECOVERY (2007)

AF6116

AF6116'RECOVERY NOTE BY FL DEPT OF ENV PRO 2007 (BPJ)

AF6116'RECOVERED AS DESCRIBED.

AF6116

AF6116 STATION RECOVERY (2008)

AF6116

AF6116'RECOVERY NOTE BY PICKETT AND ASSOCIATES 2008 (JS)

AF6116'RECOVERED IN GOOD CONDITION.

*** retrieval complete.
Elapsed Time = 00:00:02

From the "ngvd29.txt" file provided by NGS for the CERP Geodetic Vertical Control Project.

Line/Part: L26043

SSN+: mark floated, SSN*: mark constrained, SSN#: mark floated & constrained

Mark ID SSN PID Designation

Geopotential Elevation Codes

545 0131 AH8760 V 460

16.3977 16.7324

The NGS Data Sheet

See file [dsdata.txt](#) for more information about the datasheet.

```

PROGRAM = datasheet95, VERSION = 8.8
1      National Geodetic Survey,      Retrieval Date = DECEMBER 14, 2015
AH8760 *****
AH8760 DESIGNATION - V 460
AH8760 PID - AH8760
AH8760 STATE/COUNTY- FL/POLK
AH8760 COUNTRY - US
AH8760 USGS QUAD - LAKE MARIAN SW (1972)
AH8760
AH8760 *CURRENT SURVEY CONTROL
AH8760
AH8760* NAD 83(1986) POSITION- 27 48 17. (N) 081 13 01. (W) SCALED
AH8760* NAVD 88 ORTHO HEIGHT - 16.365 (meters) 53.69 (feet) ADJUSTED
AH8760
AH8760 GEOID HEIGHT - -26.912 (meters) GEOID12B
AH8760 DYNAMIC HEIGHT - 16.341 (meters) 53.61 (feet) COMP
AH8760 MODELED GRAVITY - 979,149.6 (mgal) NAVD 88
AH8760
AH8760 VERT ORDER - FIRST CLASS II
AH8760
AH8760.The horizontal coordinates were scaled from a topographic map and have
AH8760.an estimated accuracy of +/- 6 seconds.
AH8760.
AH8760.The orthometric height was determined by differential leveling and
AH8760.adjusted by the NATIONAL GEODETIC SURVEY
AH8760.in May 2008.
AH8760
AH8760.Significant digits in the geoid height do not necessarily reflect accuracy.
AH8760.GEOID12B height accuracy estimate available here.
AH8760
AH8760.The dynamic height is computed by dividing the NAVD 88
AH8760.geopotential number by the normal gravity value computed on the
AH8760.Geodetic Reference System of 1980 (GRS 80) ellipsoid at 45
AH8760.degrees latitude (g = 980.6199 gals.).
AH8760
AH8760.The modeled gravity was interpolated from observed gravity values.
AH8760
AH8760; North East Units Estimated Accuracy
AH8760;SPC FL W - 384,820. 277,160. MT (+/- 180 meters Scaled)
AH8760
AH8760 SUPERSEDED SURVEY CONTROL
AH8760
AH8760 NAVD 88 (07/21/99) 16.364 (m) 53.69 (f) SUPERSEDED 2 1
AH8760
AH8760.Superseded values are not recommended for survey control.
AH8760
AH8760.NGS no longer adjusts projects to the NAD 27 or NGVD 29 datums.
AH8760.See file dsdata.txt to determine how the superseded data were derived.
AH8760
AH8760_U.S. NATIONAL GRID SPATIAL ADDRESS: 17RML786755(NAD 83)
AH8760
AH8760_MARKER: F = FLANGE-ENCASED ROD
AH8760_SETTING: 49 = STAINLESS STEEL ROD W/O SLEEVE (10 FT.+)
AH8760_STAMPING: V 460 1997
AH8760_MARK LOGO: NGS
AH8760_PROJECTION: FLUSH
AH8760_MAGNETIC: N = NO MAGNETIC MATERIAL

```

DATASHEETS

AH8760_STABILITY: B = PROBABLY HOLD POSITION/ELEVATION WELL
 AH8760_SATELLITE: THE SITE LOCATION WAS REPORTED AS SUITABLE FOR
 AH8760+SATELLITE: SATELLITE OBSERVATIONS - May 06, 2008
 AH8760_ROD/PIPE-DEPTH: 12.5 meters

AH8760	HISTORY	- Date	Condition	Report By
AH8760	HISTORY	- 1997	MONUMENTED	FLDEP
AH8760	HISTORY	- 20000114	GOOD	FLDEP
AH8760	HISTORY	- 20010118	GOOD	FLDEP
AH8760	HISTORY	- 20070414	GOOD	FLDEP
AH8760	HISTORY	- 20080506	GOOD	PICKET

AH8760
 AH8760 STATION DESCRIPTION

AH8760'DESCRIBED BY FL DEPT OF ENV PRO 1997 (JLM)
 AH8760'THE MARK IS ABOUT 25.7 MI (41.4 KM) EAST-SOUTHEAST OF LAKE WHALES,
 AH8760'52.0 MI (83.7 KM) NORTH-NORTHWEST OF VERO BEACH ON STATE ROAD 60 IN
 AH8760'SECTION 10, TOWNSHIP 31 SOUTH, RANGE 31 EAST. TO REACH THE MARK FROM
 AH8760'THE INTERSECTION OF STATE ROAD 27 UNDERPASS AND STATE ROAD 60 IN LAKE
 AH8760'WALES, GO EAST-SOUTHEAST ON STATE ROAD 60 FOR 25.7 MI (41.4 KM) TO THE
 AH8760'JUNCTION ON RIVER RANCH BOULEVARD ON THE RIGHT, CONTINUE EAST ON STATE
 AH8760'ROAD 60 FOR 0.05 MI (0.08 KM) TO THE MARK ON THE RIGHT, A STAINLESS
 AH8760'STEEL ROD DRIVEN TO REFUSAL AT A DEPTH OF 41.0 FT (12.5 M) WITH A LOGO
 AH8760'CAP FLUSH WITH THE GROUND AND LEVEL WITH STATE ROAD 60, THE DATUM
 AH8760'POINT IS RECESSED 0.4 FT (12.2 CM) BELOW THE LEVEL OF THE LOGO CAP.
 AH8760'LOCATED ABOUT 500.0 FT (152.4 M) EAST OF RIVER RANCH BOULEVARD, 63.9
 AH8760'FT (19.5 M) NORTHEAST OF BENCH MARK FLDOT A 128 RESET, 55.1 FT (16.8
 AH8760'M) SOUTH OF THE APPROXIMATE CENTERLINE OF STATE ROAD 60, 1.7 FT (0.5
 AH8760'M) NORTH OF BARBWIRE FENCE AND 1.6 FT (0.5 M) NORTH OF A CARSONITE
 AH8760'WITNESS POST. NOTE ACCESS TO DATUM POINT IS HAD THROUGH A 5-INCH LOGO
 AH8760'CAP.

AH8760
 AH8760 STATION RECOVERY (2000)

AH8760'RECOVERY NOTE BY FL DEPT OF ENV PRO 2000 (JLM)
 AH8760'RECOVERED AS DESCRIBED.

AH8760
 AH8760 STATION RECOVERY (2001)

AH8760'RECOVERY NOTE BY FL DEPT OF ENV PRO 2001 (JLM)
 AH8760'RECOVERED AS DESCRIBED.

AH8760
 AH8760 STATION RECOVERY (2007)

AH8760'RECOVERY NOTE BY FL DEPT OF ENV PRO 2007 (BPJ)
 AH8760'RECOVERED AS DESCRIBED.

AH8760
 AH8760 STATION RECOVERY (2008)

AH8760'RECOVERY NOTE BY PICKETT AND ASSOCIATES 2008 (JS)
 AH8760'RECOVERED IN GOOD CONDITION.

*** retrieval complete.
 Elapsed Time = 00:00:01