

Company	Diversified Drilling Corp.	Company	Diversified Drilling Corporation
Well	RO-114	Well	RO-114
Field	Naples	Field	Naples
County	Collier	County	Collier
State/Prv	Florida	State/Prv	Florida
Location	Vanderbilt Road Extension North Collier Regional WTP Hazen & Sawyer, Inc.	Other Services	NONE
Permanent Datum	G.L.	Elevation	
Log Measured From	G.L.	K.B.	
Drilling Measured From	G.L.	D.F.	
Date	15-OCT-2004	Elevation	
Run Number	ONE	Depth Driller	164'
Depth Driller	164'	Bottom Logged Interval	156'
Bottom Logged Interval	156'	Top Log Interval	SURFACE
Open Hole Size	32"	Type Fluid	MUD
Density / Viscosity	NA/NA	Max. Recorded Temp.	NA
Estimated Cement Top	NA	Time Well Ready	11:00 11/6/04
Time Well Ready	11:00 11/6/04	Equipment Number	MMGS-1
Location	FI Meters	Recorded By	S. Miller
Recorded By	S. Miller	Witnessed By	J. Venable (H.S.)
Run Number	ONE	Run Number	ONE
Bit	32"	Bit	32"
From	SURFACE	From	SURFACE
To	158'	To	158'
Size	na	Size	na
Wt/ft		Wt/ft	
Top		Top	
Bottom		Bottom	
Invoice No.	2004159	Invoice No.	2004159
P.O. #.		P.O. #.	
Job No.		Job No.	

<<< Fold Here >>>

All interpretations are opinions based on inferences from electrical or other measurements and we cannot and do not guarantee the accuracy or correctness of any interpretation, and we shall not, except in the case of gross or willful negligence on our part, be liable or responsible for any loss, costs, damages, or expenses incurred or sustained by anyone resulting from any interpretation made by any of our officers, agents or employees. These interpretations are also subject to our general terms and conditions set out in our current Price Schedule.

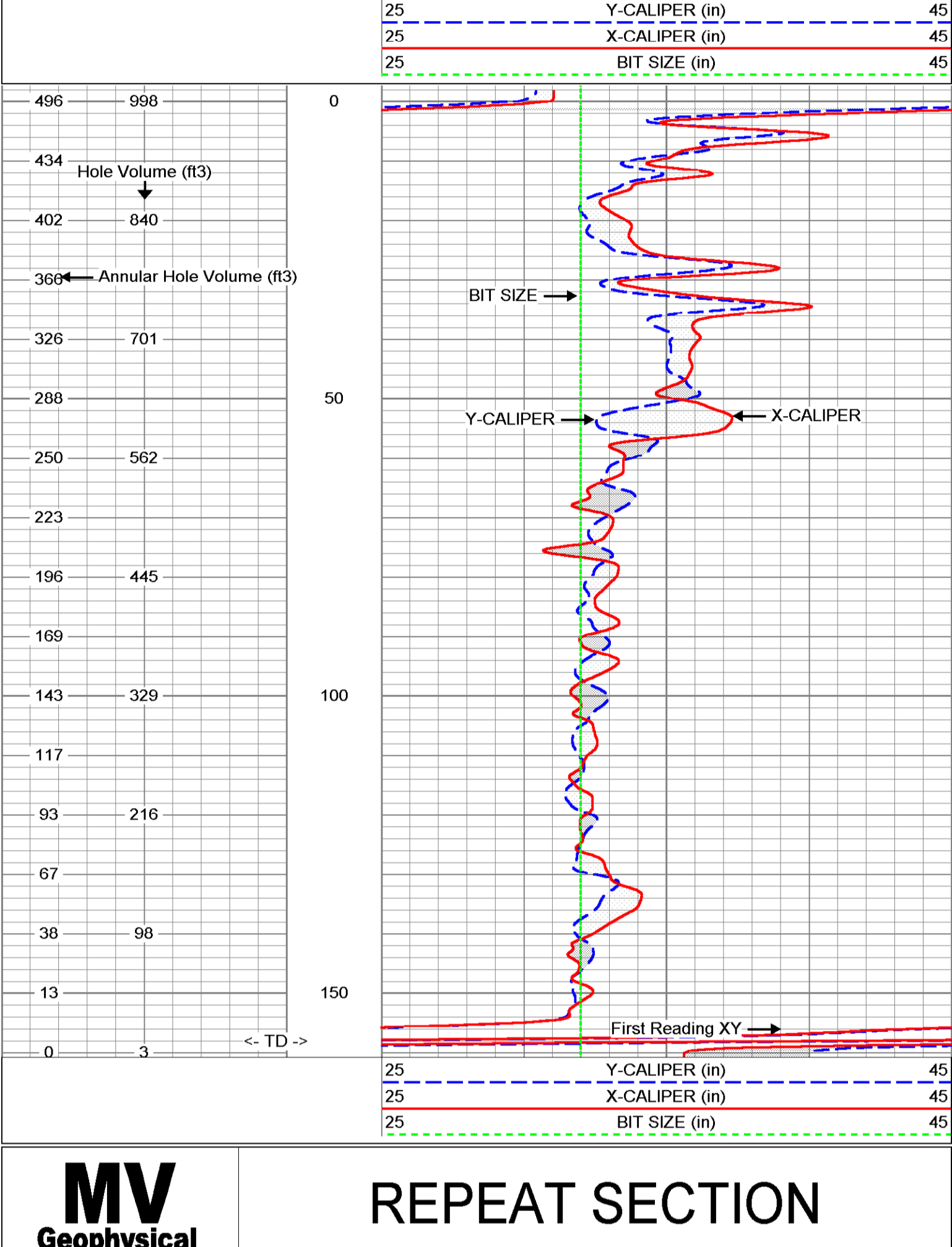
Comments

X-Y Caliper Arm Extensions: 51"

Future Casing Size: 24"

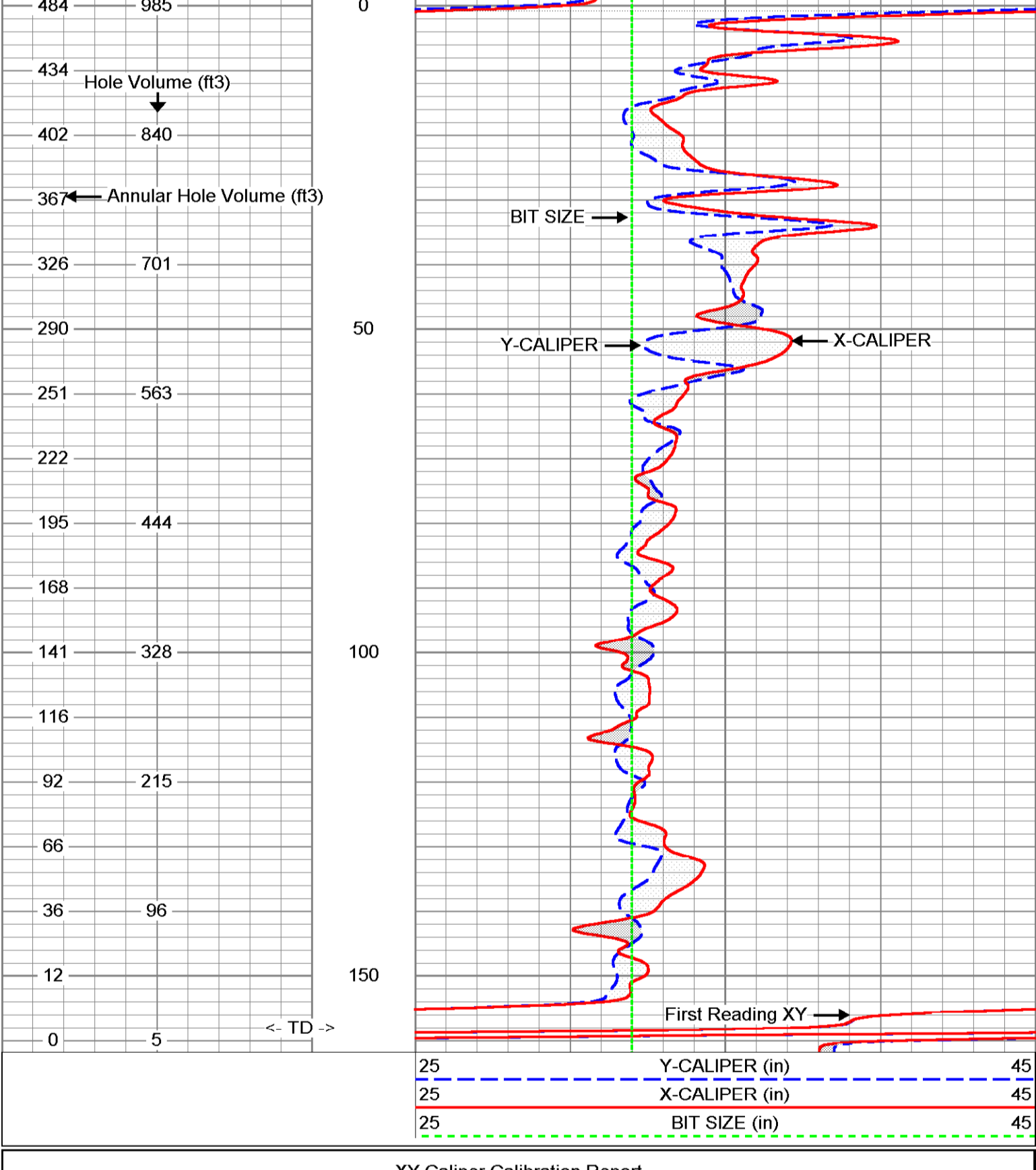
## MAIN PASS

Database File: ncr-114.db  
 Dataset Pathname: MAIN  
 Presentation Format: XY2545-5  
 Dataset Creation: Sat Nov 06 11:27:34 2004  
 Charted by: Depth in Feet scaled 1:240



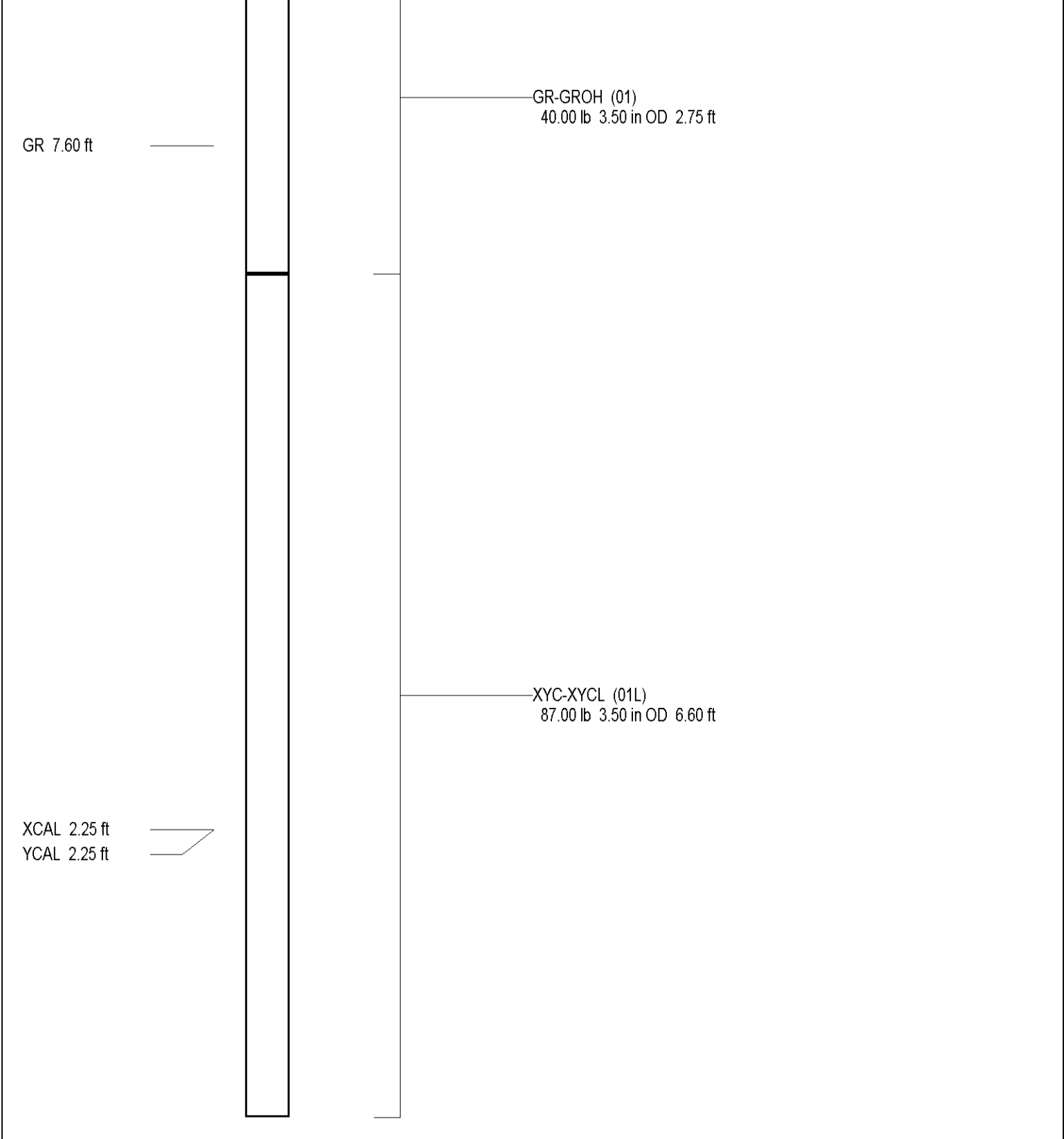
## REPEAT SECTION

Database File: ncr-114.db  
 Dataset Pathname: REPEAT  
 Presentation Format: XY2545-5  
 Dataset Creation: Sat Nov 06 11:20:58 2004  
 Charted by: Depth in Feet scaled 1:240



Serial Number:	01L
Tool Model:	XYCL
Performed:	Sat Nov 06 11:07:43 2004
Small Ring:	32 in
Large Ring:	51 in
Reading with Small Ring:	766.5 cps
Reading with Large Ring:	1024.71 cps
Gain:	0.0735835
Offset:	-24.4018

Serial Number:	01
Tool Model:	GROH
Performed:	Thu Nov 04 14:15:44 2004
Calibrator Value:	120 GAPI
Background Reading:	10.7107 cps
Calibrator Reading:	46.4703 cps
Sensitivity:	3.35574 GAPI/cps



Dataset: run1/pass2  
 Total Length: 9.35 ft  
 Total Weight: 127.00 lb  
 O.D.: 3.50 in

Company Diversified Drilling Corp.		Well RO-114		Company Diversified Drilling Corporation	
Field Naples		Location Vanderbilt Road Extension		Well RO-114	
County Collier		North Collier Regional WTP		Field Naples	
State/Prv Florida		Hazen & Sawyer, Inc.		County Collier	
Location		Elevation		State/Prv Florida	
Permanent datum G.L.		Log Measured From G.L.		Other Services NONE	
Drilling Measured From G.L.		Date 18-NOV-2004		Run Number TWO	
		Depth Driller 429'		Depth Logger 425'	
		Bottom Logged Interval SURFACE		Open Hole Size 23"	
		Type Fluid MWLD		Type Fluid MWLD	
		Density / viscosity NA		Density / viscosity NA	
		Max. recorded temp. NA		Max. recorded temp. NA	
		Estimated cement top 1320		Estimated cement top 1320	
		Time Last Ready Bottom 13:30 11/18/04		Time Last Ready Bottom 13:30 11/18/04	
		Equipment Number M/GS-4		Equipment Number M/GS-4	
		Location Ft. Myers		Location Ft. Myers	
		Recorded By S. Miller		Recorded By S. Miller	
		Witnessed By J. Wheatley (HS)		Witnessed By J. Wheatley (HS)	
		Name (DDC)		Name (DDC)	
Run Number		Bit		Tiding Record	
ONE		SURFACE		From	
TWO		SURFACE		To	
ONE		32"		159'	
TWO		23"		156'	
		425' logger		425' logger	
Casing Record		Size		Top	
Surface String		24"		VIGRIT	
Production String				SURFACE	
Liner				Bottom	
				198'	
2004162		P. O. #.		JOB No.:	
				*FIELD PRINT*	

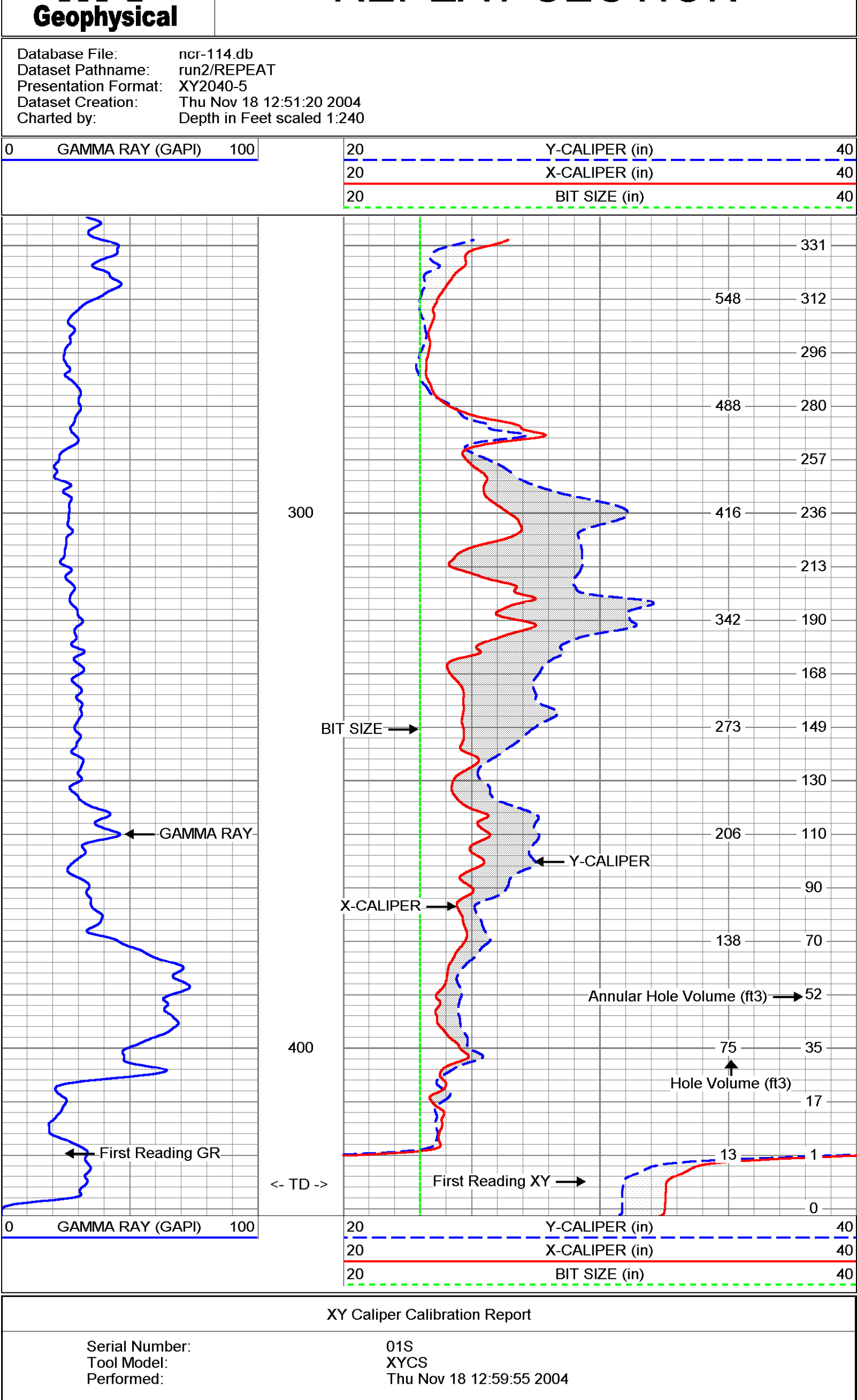
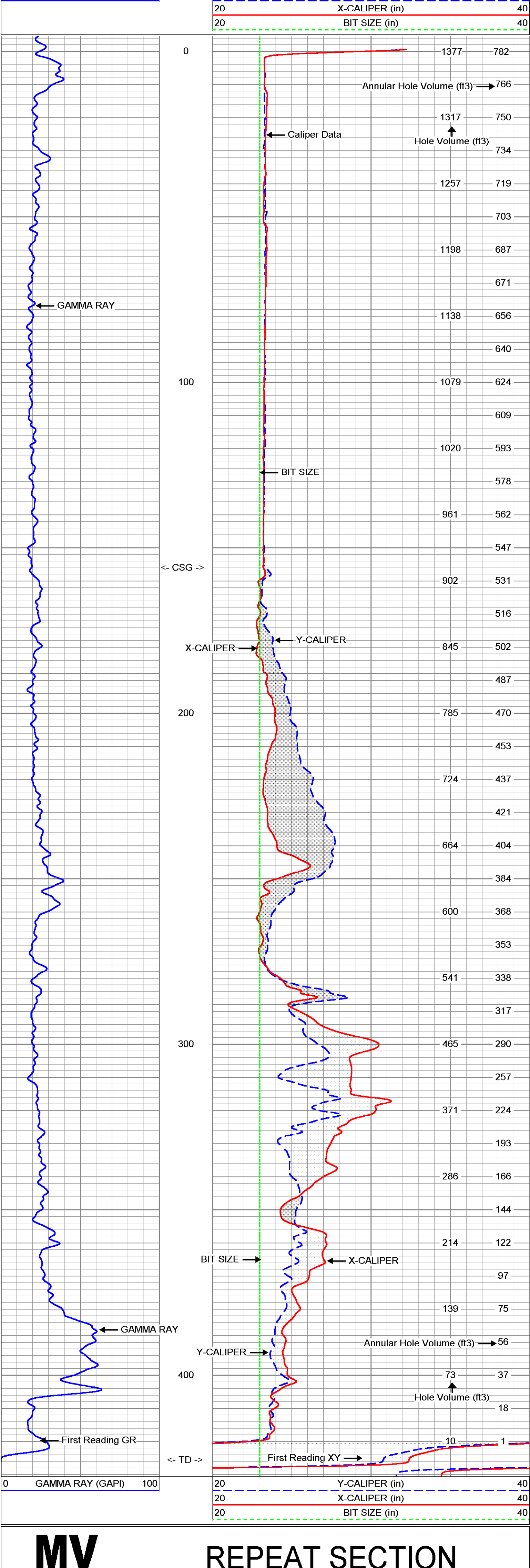
<<< Fold Here >>>

All interpretations are opinions based on inferences from electrical or other measurements and we cannot and do not guarantee the accuracy or correctness of any interpretation, and we shall not, except in the case of gross or willful negligence on our part, be liable or responsible for any loss, costs, damages, or expenses incurred or sustained by anyone resulting from any interpretation made by any of our officers, agents or employees. These interpretations are also subject to our general terms and conditions set out in our current Price Schedule.

Comments

X-Y Caliper Arm Extensions: 33"

Future Casing Size: 16"

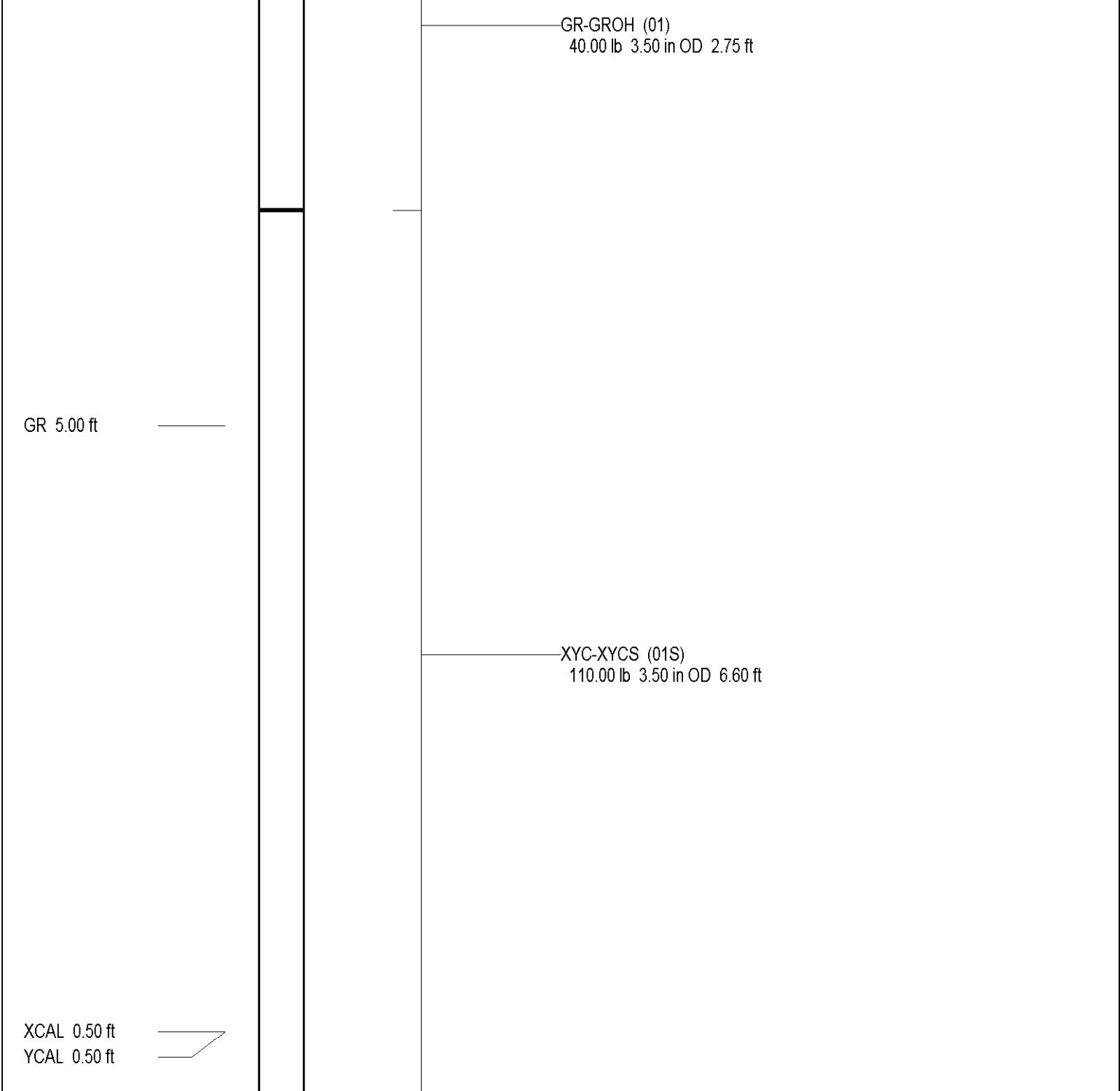


**XY Caliper Calibration Report**

Serial Number:	01S	XYCS	Performed:	Thu Nov 18 12:59:55 2004
Small Ring:	23.25	in		
Large Ring:	33	in		
Reading with Small Ring:	760	795.2	cps	
Reading with Large Ring:	1017.12	1040.11	cps	
Gain:	0.03792	0.0398105		
Offset:	-5.56923	-8.40735		

**Gamma Ray Calibration Report**

Serial Number:	01	GROH	Performed:	Thu Nov 18 12:25:53 2004
Calibrator Value:	120	GAPI		
Background Reading:	10.7106	cps		
Calibrator Reading:	126.471	cps		
Sensitivity:	1.03662	GAPI/cps		





DUAL INDUCTION  
LL3 / SP  
LOG

Company		Diversified Drilling Corp.	
Well	RO-114	County	Collier
Field	Collier	State/Pv	Florida
Company	Diversified Drilling Corporation	Location	Vanderbilt Road Extension North Collier Regional WTP Hazen & Sawyer, Inc.
Well	RO-114	Other Services	X/Y/GR FCI FLOW
Field	Naples	Location	State/Pv Florida
County	Collier	Permanent Datum	G.L.
Location	Collier	Log Measured From	G.L.
		Elevation	
		Drilling Measured From	G.L.
		Elevation	
		K.B.	
		D.F.	
		Elevation	
Date	2-DEC-2004	Run Number	THREE
Depth Driller	514'	Depth Logger	514'
Bottom Logged Interval	514'	Top Log Interval	412'
Open Hole Size	14.75"	Type Fluid	WATER
Density / Viscosity	NA	Max. Recorded Temp.	NA
Estimated Cement Top	NA	Time Well Ready	13:30 11/21/04
Time Well Ready	13:30 11/21/04	Time Logger on Bottom	14:30 11/21/04
Location	FL Myers	Equipment Number	MVGS-1
Witnessed By	J.Wheatley (HS)	Recorded By	S.Miller
Run Number	ONE	Borehole Record	
ONE	32"	From	158'
TWO	23"	From	158'
THREE	14.75"	From	158'
		To	158'
		Weight	
		From	
		To	
Casing Record	24"	Weight	
Surface String	16" FRP	From	
Production String	15.875" ID	From	
Liner	412'	From	
		To	
Job No.:			

<<< Fold Here >>>

All interpretations are opinions based on inferences from electrical or other measurements and we cannot and do not guarantee the accuracy or correctness of any interpretation, and we shall not, except in the case of gross or willful negligence on our part, be liable or responsible for any loss, costs, damages, or expenses incurred or sustained by anyone resulting from any interpretation made by any of our officers, agents or employees. These interpretations are also subject to our general terms and conditions set out in our current Price Schedule.

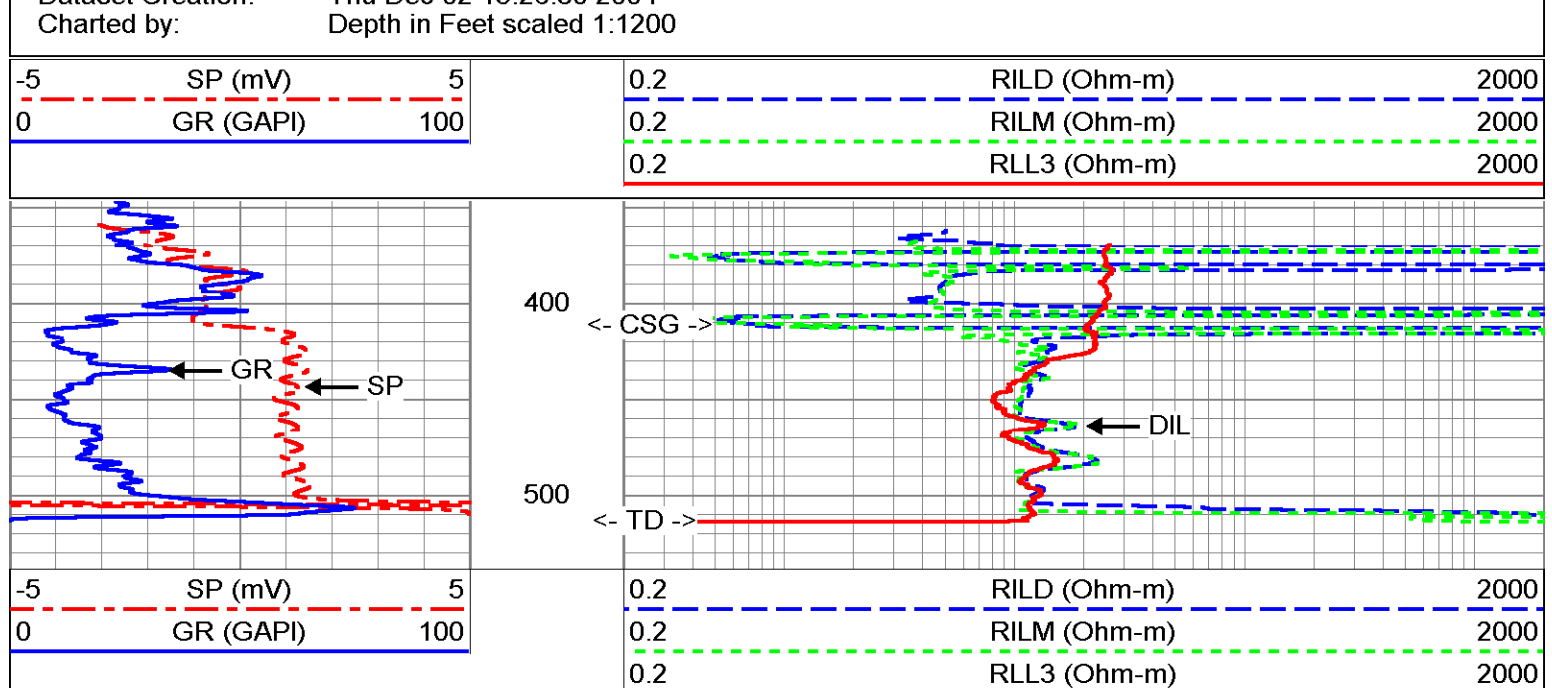
Comments

Rw=2.064 ohm-m @ 81.0 degF

**MV Geophysical**

## MAIN PASS

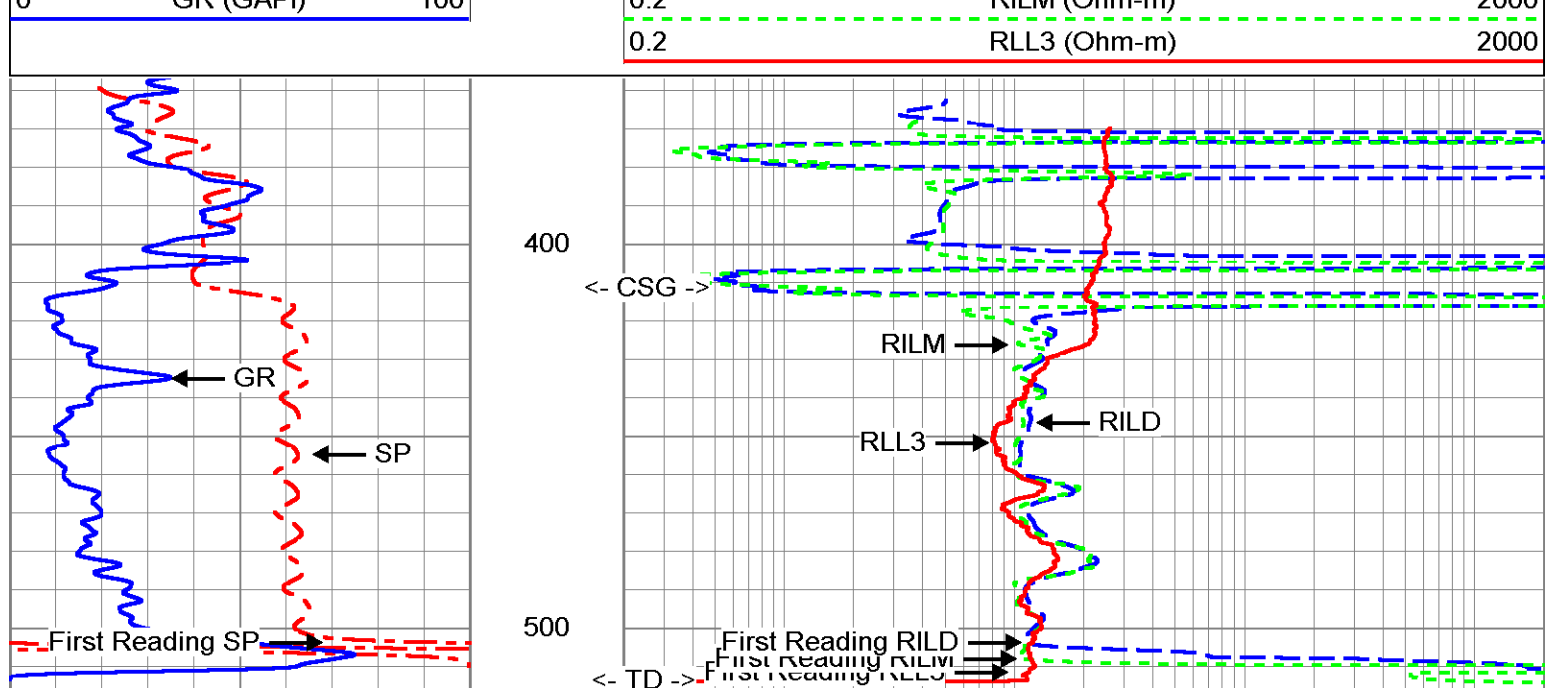
Database File: ncr-114.db  
 Dataset Pathname: run3/MAIN  
 Presentation Format: DIL-1  
 Dataset Creation: Thu Dec 02 15:26:30 2004  
 Charted by: Depth in Feet scaled 1:1200



**MV Geophysical**

## MAIN PASS

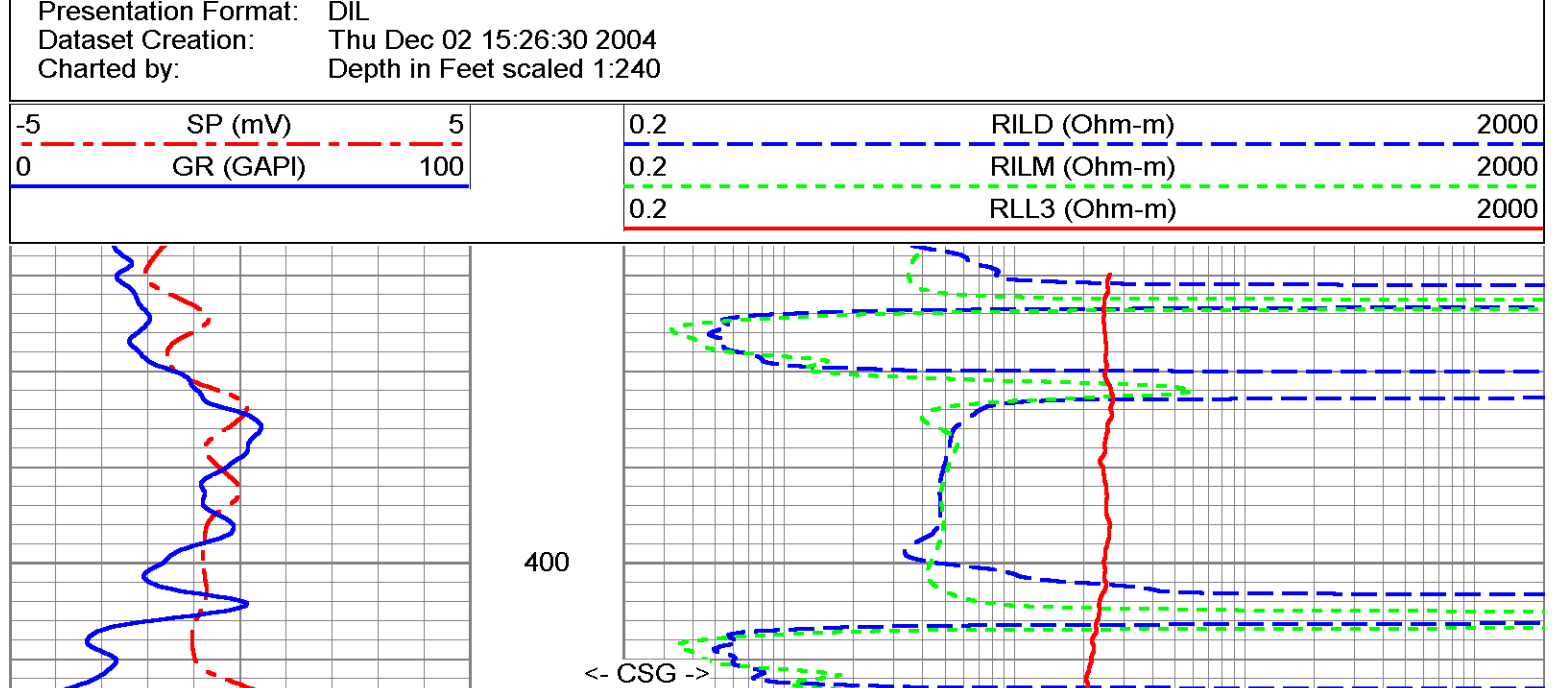
Database File: ncr-114.db  
 Dataset Pathname: run3/MAIN  
 Presentation Format: DIL  
 Dataset Creation: Thu Dec 02 15:26:30 2004  
 Charted by: Depth in Feet scaled 1:600



**MV Geophysical**

## MAIN PASS

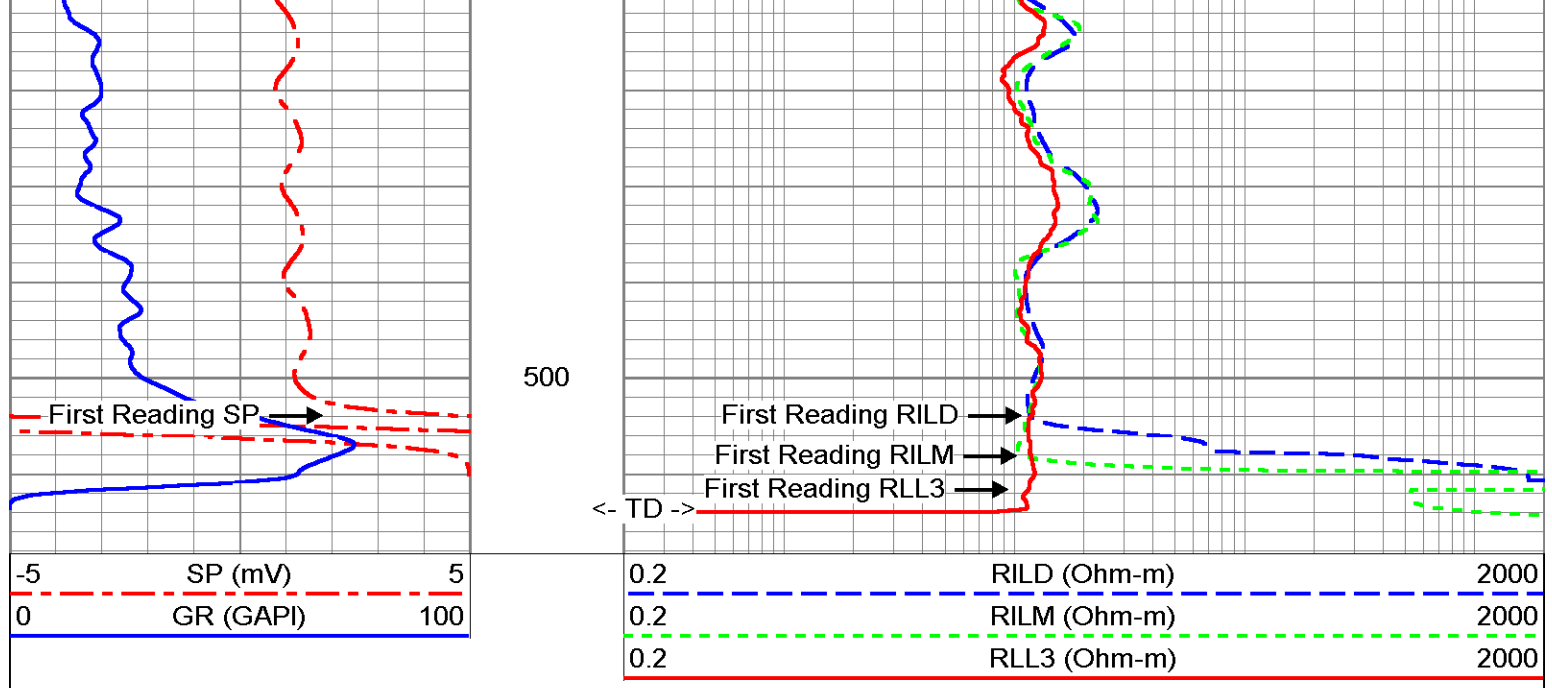
Database File: ncr-114.db  
 Dataset Pathname: run3/MAIN  
 Presentation Format: DIL  
 Dataset Creation: Thu Dec 02 15:26:30 2004  
 Charted by: Depth in Feet scaled 1:240



**MV Geophysical**

## REPEAT SECTION

Database File: ncr-114.db  
 Dataset Pathname: run3/REPEAT  
 Presentation Format: DIL  
 Dataset Creation: Thu Dec 02 13:58:04 2004  
 Charted by: Depth in Feet scaled 1:240



### Dual Induction Calibration Report

Serial-Model: 5390-R  
 Surface Cal Performed: Mon Feb 24 16:52:46 2003  
 Downhole Cal Performed: Thu Dec 02 14:25:22 2004  
 After Survey Verification Performed: Thu Dec 02 14:57:34 2004

#### Surface Calibration

Loop:	Readings			References		Results	
	Air	Loop		Air	Loop	m	b
Deep	0.041	0.637	V	0.000	400.000	mmho-m	670.900
Medium	-0.006	0.700	V	0.000	464.000	mmho-m	656.366

#### Internal:

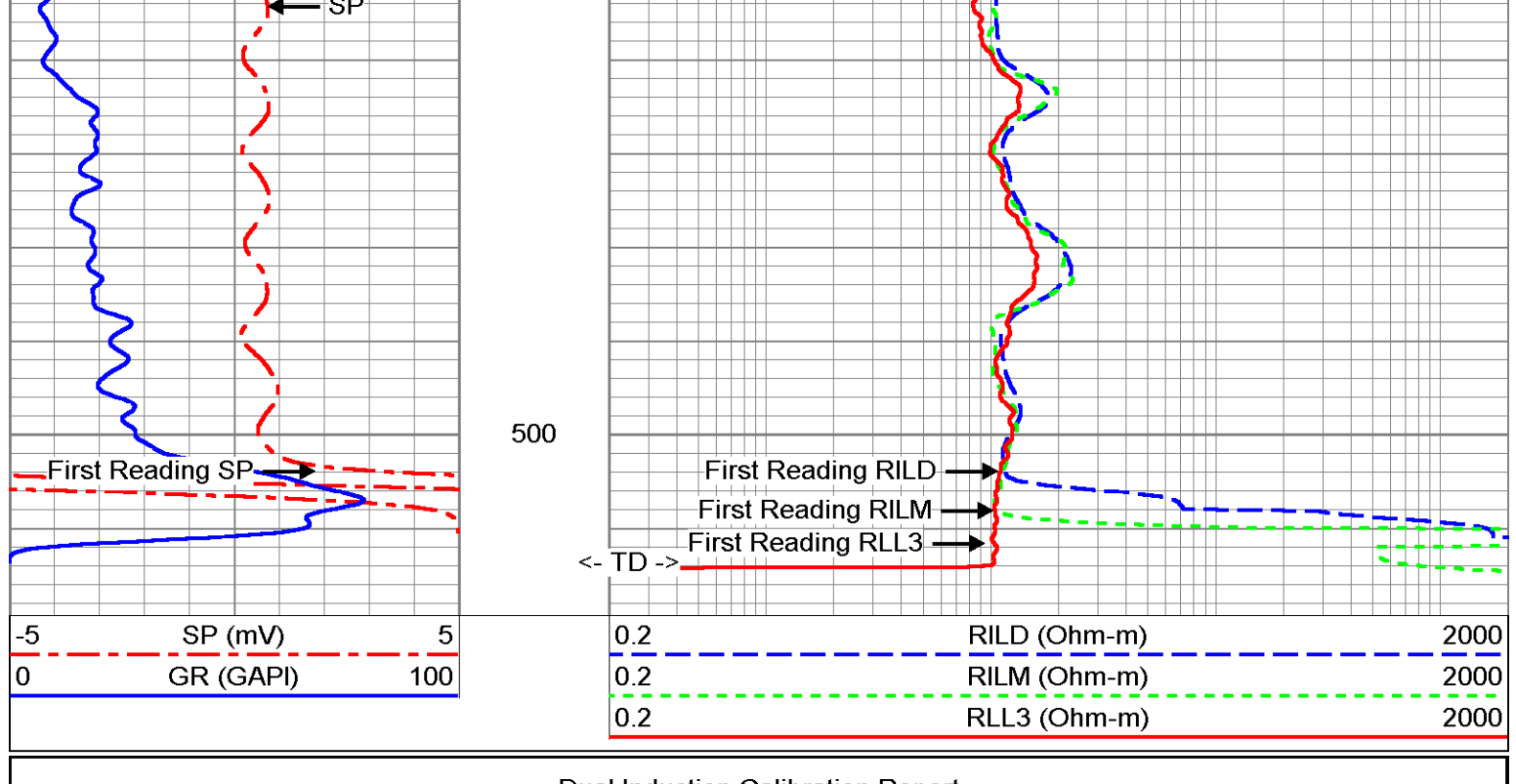
Deep	Zero			Cal		Results	
	Zero	Cal		Zero	Cal	m	b
Deep	0.011	0.647	V	0.000	400.000	mmho-m	628.552
Medium	-0.011	0.749	V	0.000	464.000	mmho-m	610.612

#### Downhole Calibration

Internal:	Readings			References		Results	
	Zero	Cal		Zero	Cal	m	b
Deep	-18.976	398.596	mmho-m	-19.983	406.966	mmho-m	1.022
Medium	12.988	488.449	mmho-m	-2.972	495.796	mmho-m	1.049
Shallow	2.503	0.023	V	494.500	2.000	Ohm-m	198.644

#### After Survey Verification

Internal:	Readings			Targets		Results	
	Zero	Cal		Zero	Cal	m'	b'
Deep	-18.009	400.243	mmho-m	-18.976	398.596	mmho-m	1.022
Medium	14.246	490.080	mmho-m	12.988	488.449	mmho-m	1.049
Shallow	494.619	2.541	Ohm-m	494.500	2.000	Ohm-m	1.001



Dataset: run3/pass5  
 Total Length: 20.90 ft  
 Total Weight: 345.00 lb  
 O.D.: 4.00 in



# FLUID CONDUCTIVITY TEMPERATURE LOG

Company Diversified Drilling Corp.		Company Diversified Drilling Corporation	
Well RO-114	Field Naples	Well RO-114	Field Naples
County Collier	State/Prv Florida	County Collier	State/Prv Florida
Location Vanderbilt Road Extension North Collier Regional WTP Hazen & Sawyer, Inc.		Other Services XY/GR DIL/SP FLOW	
Permanent Datum Log Measured From Drilling Measured From	G.L. G.L. G.L.	Elevation	K.B. D.F. G.L.
Date 2-DEC-2004	Run Number THREE	Depth Driller 514'	Depth Logger 514'
Bottom Logged Interval 514'	Top Log Interval 375'	Open Hole Size 14.75"	Type Fluid WATER
Density / Viscosity	Max. Recorded Temp.	Estimated Cement Top	Time Well Ready
na	na	NA	13:30 12/2/04
			15:00 12/2/04
			15:00 12/2/04
			MMGS-1
			Fi Myers
			S Miller
			J Wheatley (HS)
			Nate (DDC)
Run Number ONE	Bit From 32"	Size SURFACE	To 158'
TWO	32"	429'	156'
THREE	14.75"	412'	514'
Casing Record	Size	Wt/ft	Top
Surface String 24"	.375" WT	166'	SURFACE
Prof. String 18" FRP	15.875" ID	412'	SURFACE
Production String			
Invoice No. 2004168	P.O. #.	Job No.:	*FIELD PRINT*

<<< Fold Here >>>

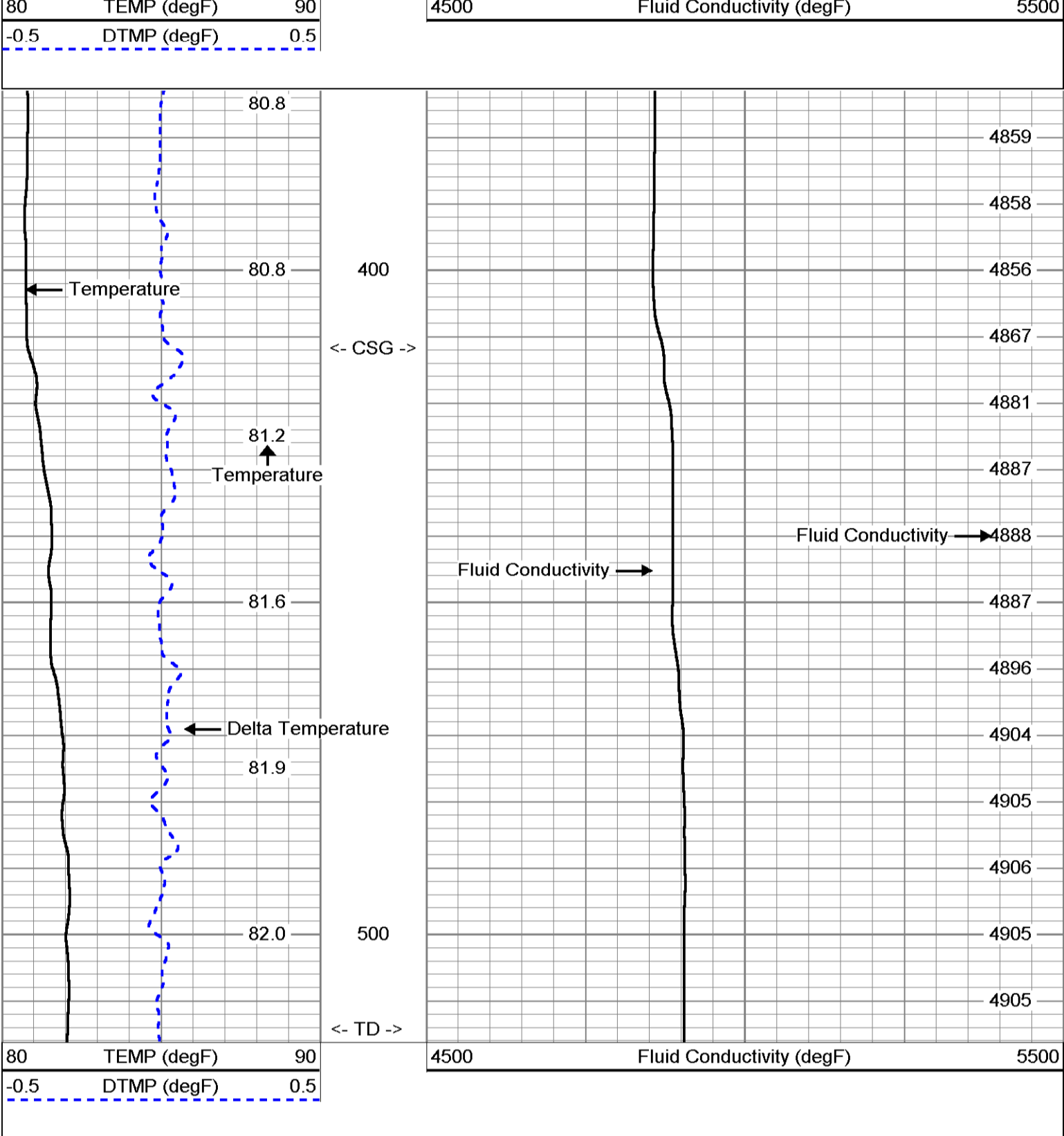
All interpretations are opinions based on inferences from electrical or other measurements and we cannot and do not guarantee the accuracy or correctness of any interpretation, and we shall not, except in the case of gross or willful negligence on our part, be liable or responsible for any loss, costs, damages, or expenses incurred or sustained by anyone resulting from any interpretation made by any of our officers, agents or employees. These interpretations are also subject to our general terms and conditions set out in our current Price Schedule.

Comments

STATIC and DYNAMIC DOWN passes were performed.  
 Cw=4844 uS/cm @ 81.0 degF (Dynamic Sample). Q ~330 gpm.  
 FLUID RESISTIVITY CALIBRATION REPORT (Performed: 16-AUG-04 13:00)  
 OHM-M CPS  
 820.1 4400.12  
 1525.1 3890.11  
 3315.0 3565.33  
 TEMPERATURE CALIBRATION REPORT (Performed: 16-AUG-04 13:45)  
 DEG-F CPS  
 34.6 2346.14  
 144.6 6955.44

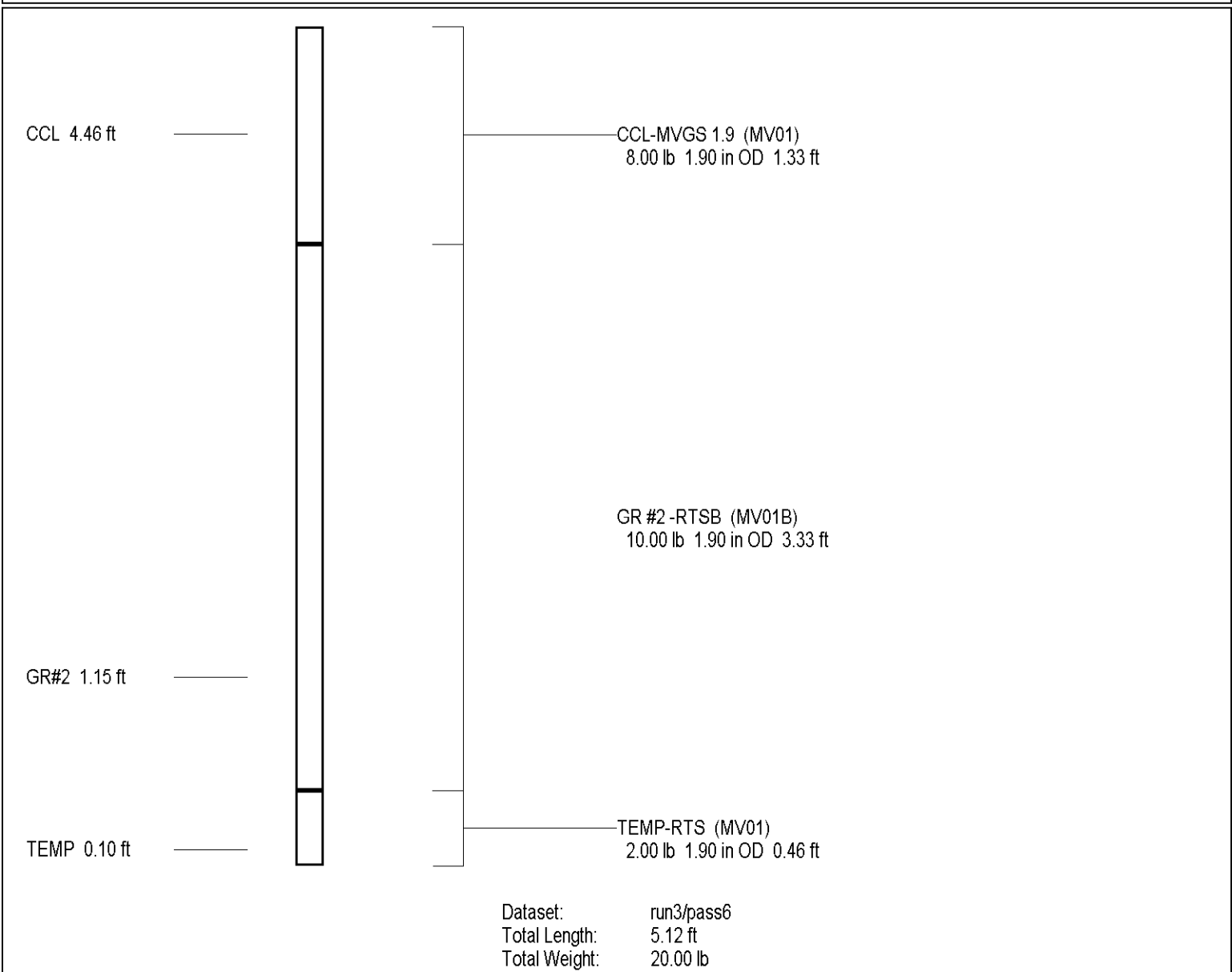
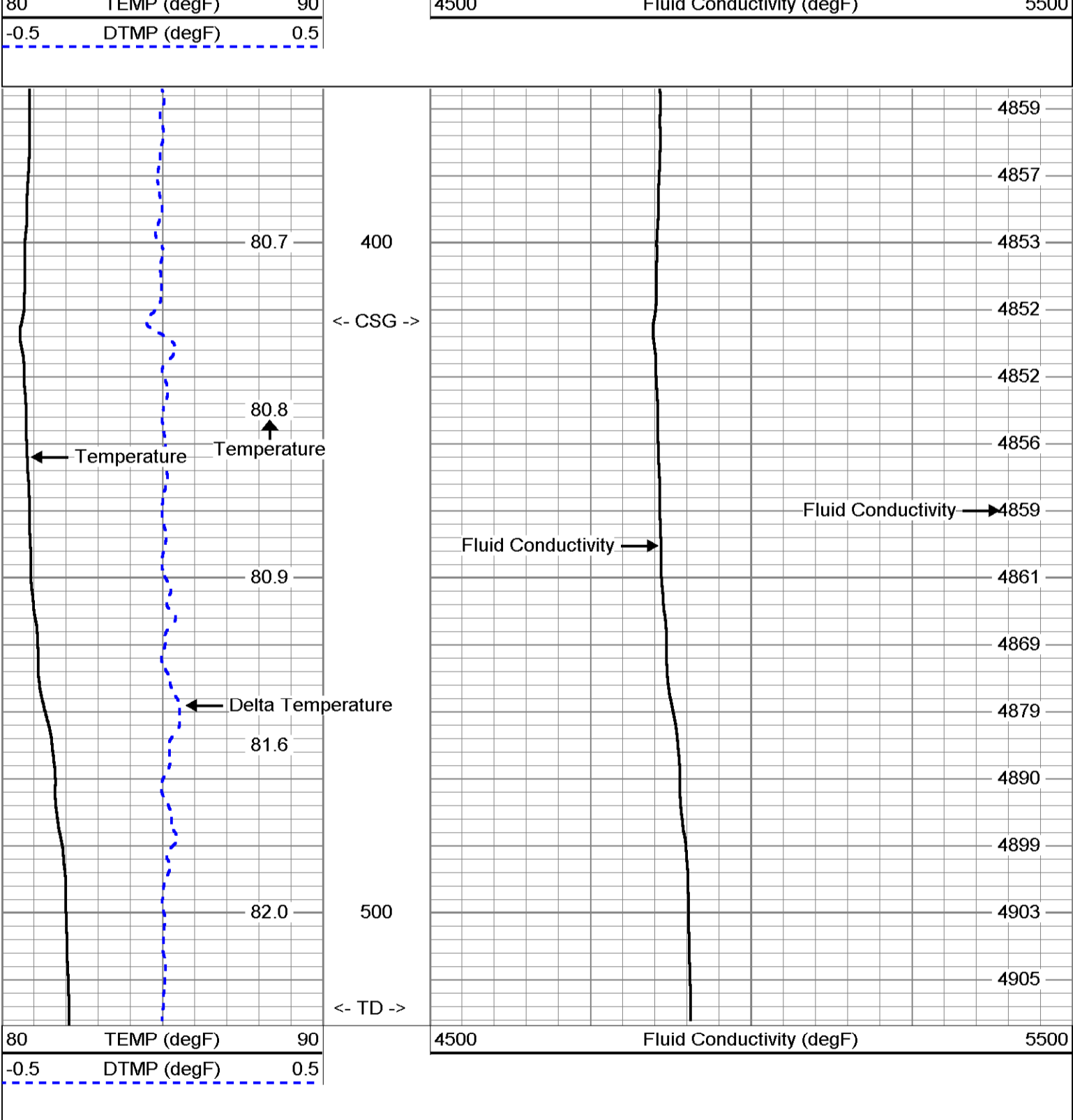
## MV Geophysical DYNAMIC FCT DOWN

Database File: ncr-114.db  
 Dataset Pathname: run3/DFCT  
 Presentation Format: FCT8  
 Dataset Creation: Thu Dec 02 17:58:19 2004  
 Charted by: Depth in Feet scaled 1:240



## MV Geophysical STATIC FCT DOWN

Database File: ncr-114.db  
 Dataset Pathname: run3/SFCT  
 Presentation Format: FCT8  
 Dataset Creation: Thu Dec 02 16:28:00 2004  
 Charted by: Depth in Feet scaled 1:240



Company Diversified Drilling Corp.		Company Diversified Drilling Corporation	
Well RO-114	Field Naples	Well RO-114	Field Naples
County Collier	State/Prv Florida	County Collier	State/Prv Florida
Location Vanderbilt Road Extension North Collier Regional WTP Hazen & Sawyer, Inc.		Other Services XY/CR DL/SP F-CI	
Permanent Datum	G.L.	Elevation	K.B.
Log Measured From	G.L.		D.F.
Drilling Measured From	G.L.		G.L.
Date	2-DEC-2004		
Run Number	THREE		
Depth Driller	514'		
Depth Logger	514'		
Bottom Logged Interval	514'		
Top Log Interval	345'		
Open Hole Size	14.75"		
Type Fluid	WATER		
Density / Viscosity	NA/NA		
Max. Recorded Temp.	na		
Estimated Cement Top	NA		
Time Well Ready	13:30 12/20/04		
Time Logger on Bottom	15:30 12/20/04		
Equipment Number	MWGS-1		
Location	Fl Myers		
Recorded By	S. Miller		
Witnessed By	J. Wheatley (HS)		
	Nate (DDC)		
Run Number	ONE	From SURFACE	To
TWO	THREE	From 156'	To 412'
		From 412'	To 514'
Casing Record	Size	Weight	From
Surface String	24"	37.9 W/L	196'
Prot. String	16" FRP		15.875' ID
Production String			
Liner	2004168		
Invoice No.		P.O. #	JOB No.:
			* FIELD PRINT *

<<< Fold Here >>>

All interpretations are opinions based on inferences from electrical or other measurements and we cannot and do not guarantee the accuracy or correctness of any interpretation, and we shall not, except in the case of gross or willful negligence on our part, be liable or responsible for any loss, costs, damages, or expenses incurred or sustained by anyone resulting from any interpretation made by any of our officers, agents or employees. These interpretations are also subject to our general terms and conditions set out in our current Price Schedule.

Comments

STATIC and DYNAMIC down passes were made at 50 fpm.

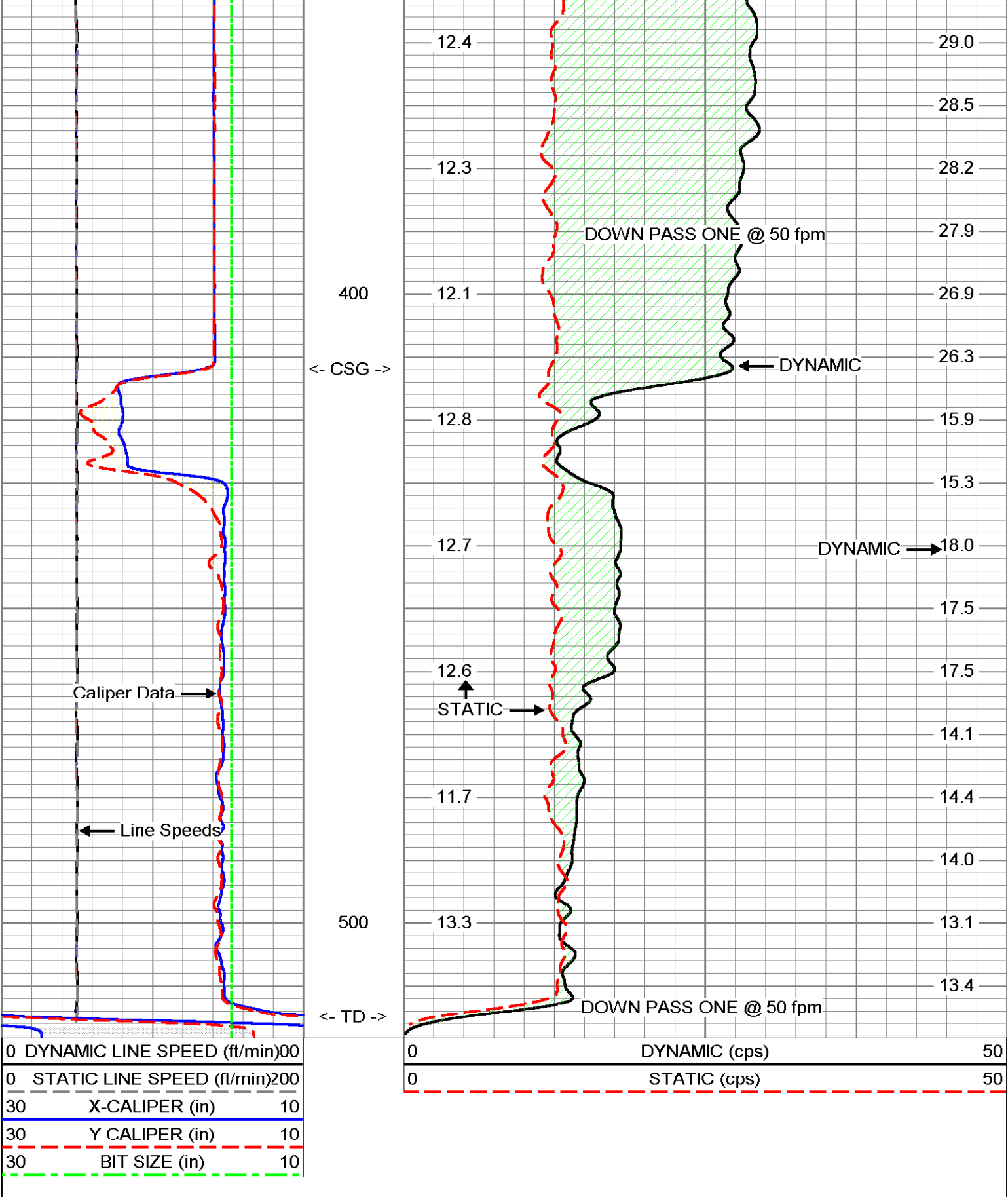
1 Station was performed.

Q ~500 gpm

## S/D DOWN @ 50 fpm

Database File: ncr-114.db  
 Dataset Pathname: run3/SD50  
 Presentation Format: Q-50  
 Dataset Creation: Thu Dec 02 16:25:55 2004  
 Charted by: Depth in Feet scaled 1:240

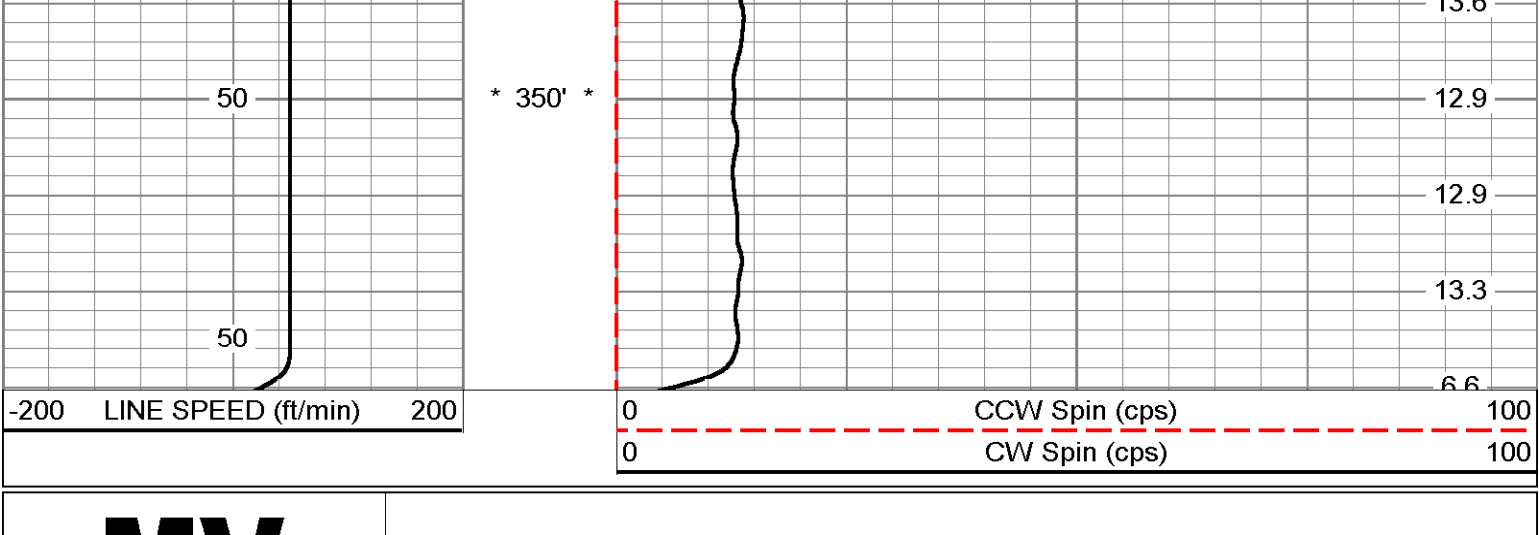
0 DYNAMIC LINE SPEED (ft/min)00	0	DYNAMIC (cps)	50
0 STATIC LINE SPEED (ft/min)200	0	STATIC (cps)	50
30 X-CALIPER (in)	10		
30 Y CALIPER (in)	10		
30 BIT SIZE (in)	10		



## Station #1: 350'

Database File: ncr-114.db  
 Dataset Pathname: run3/pass9  
 Presentation Format: FLOW  
 Dataset Creation: Thu Dec 02 17:06:52 2004 by Log VER\_5.3  
 Charted by: Depth in Feet scaled 1:240

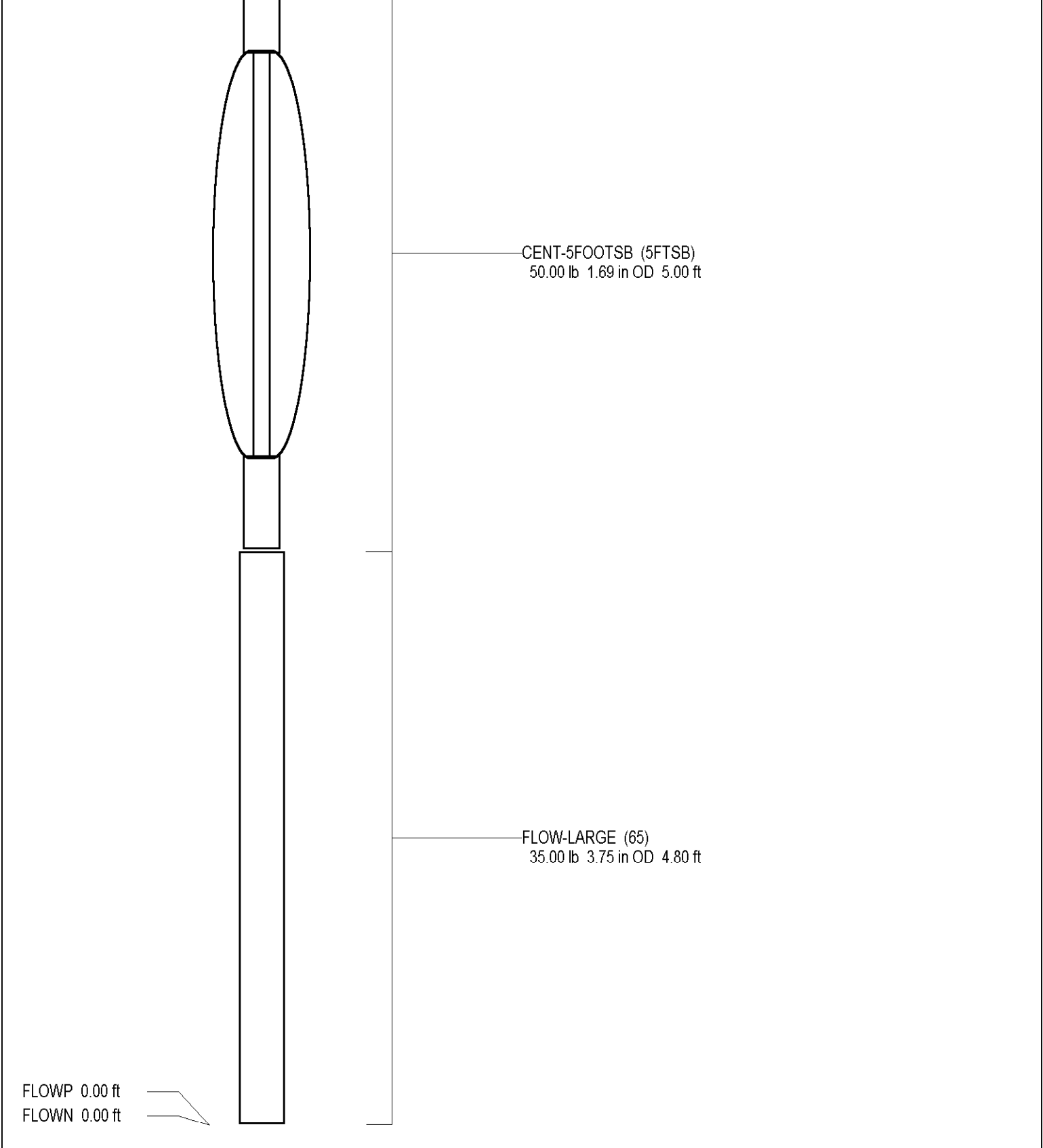
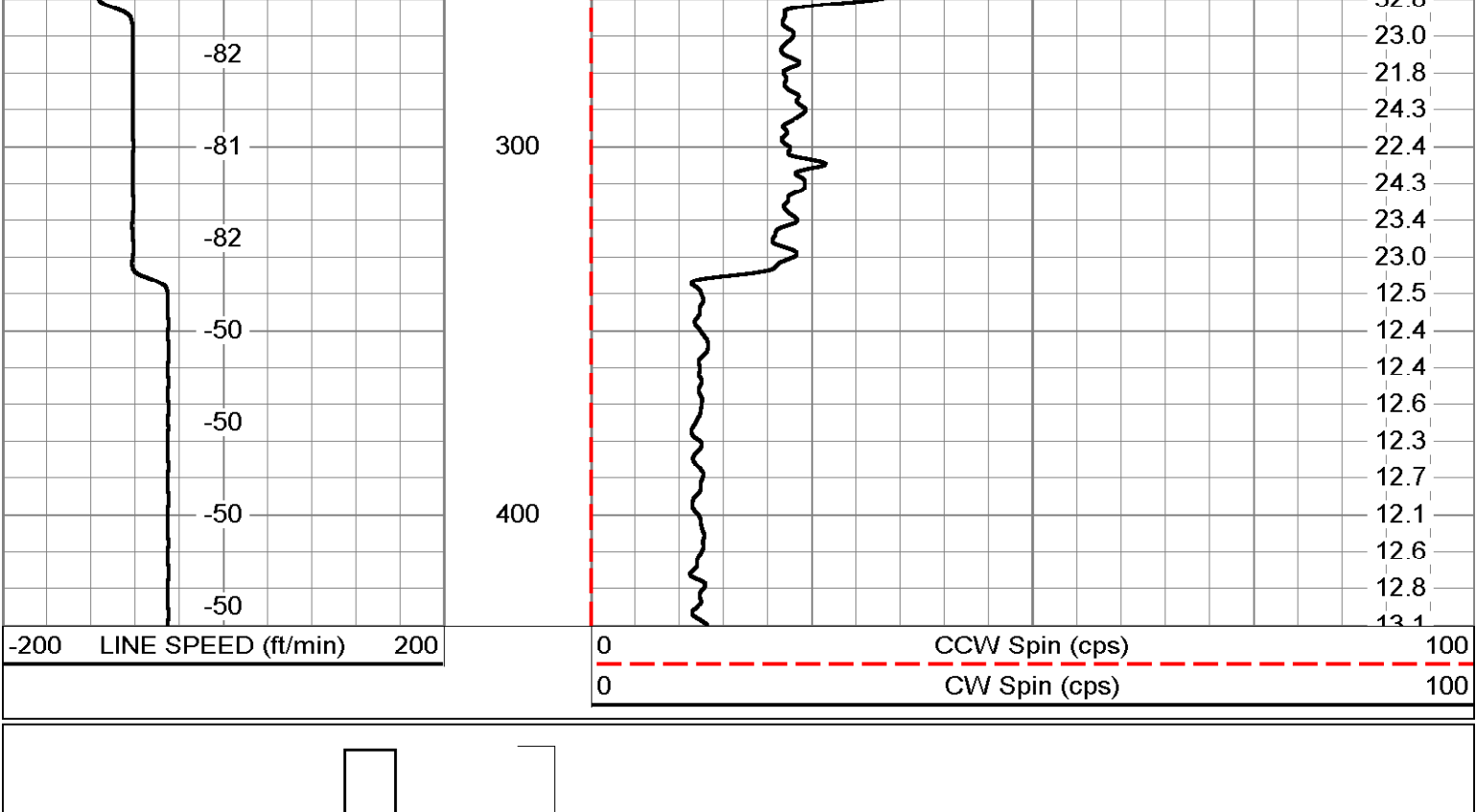
-200 LINE SPEED (ft/min) 200	0	CCW Spin (cps)	100
	0	CW Spin (cps)	100



## Q Calibration Down

Database File: ncr-114.db  
 Dataset Pathname: run3/pass7  
 Presentation Format: FLOW  
 Dataset Creation: Thu Dec 02 15:56:51 2004 by Log VER\_5.3  
 Charted by: Depth in Feet scaled 1:600

-200 LINE SPEED (ft/min) 200	0	CCW Spin (cps)	100
	0	CW Spin (cps)	100



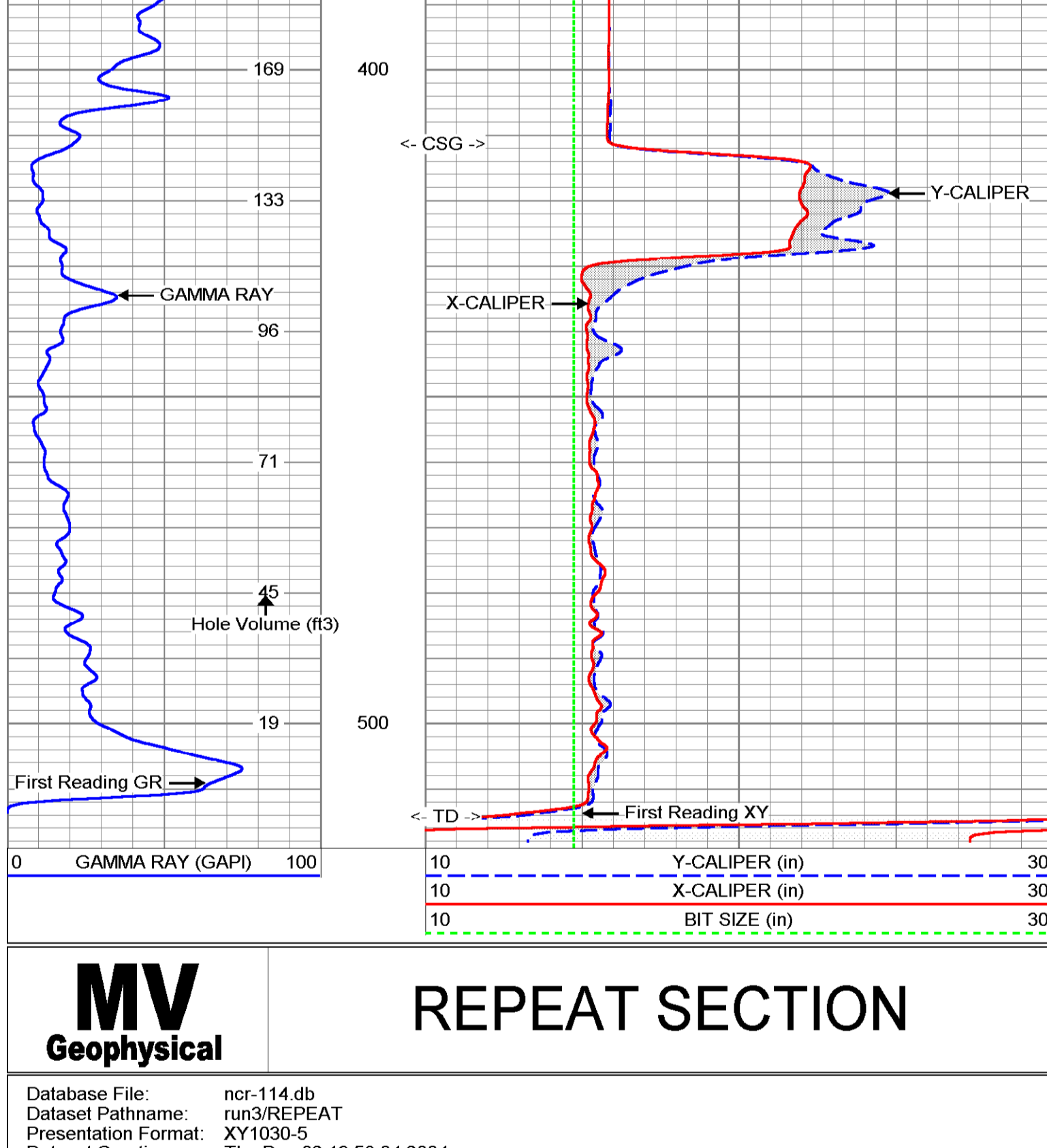
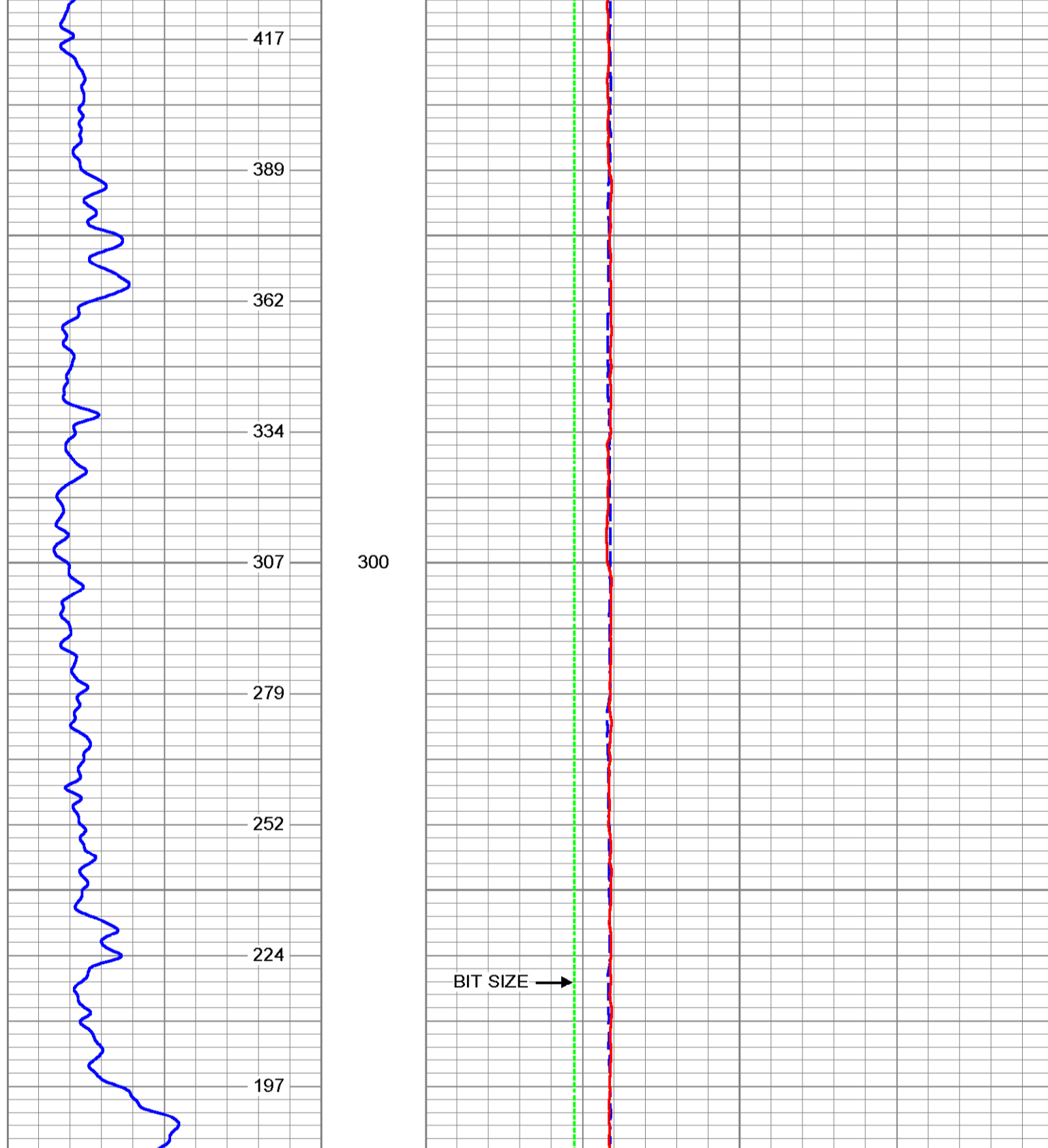
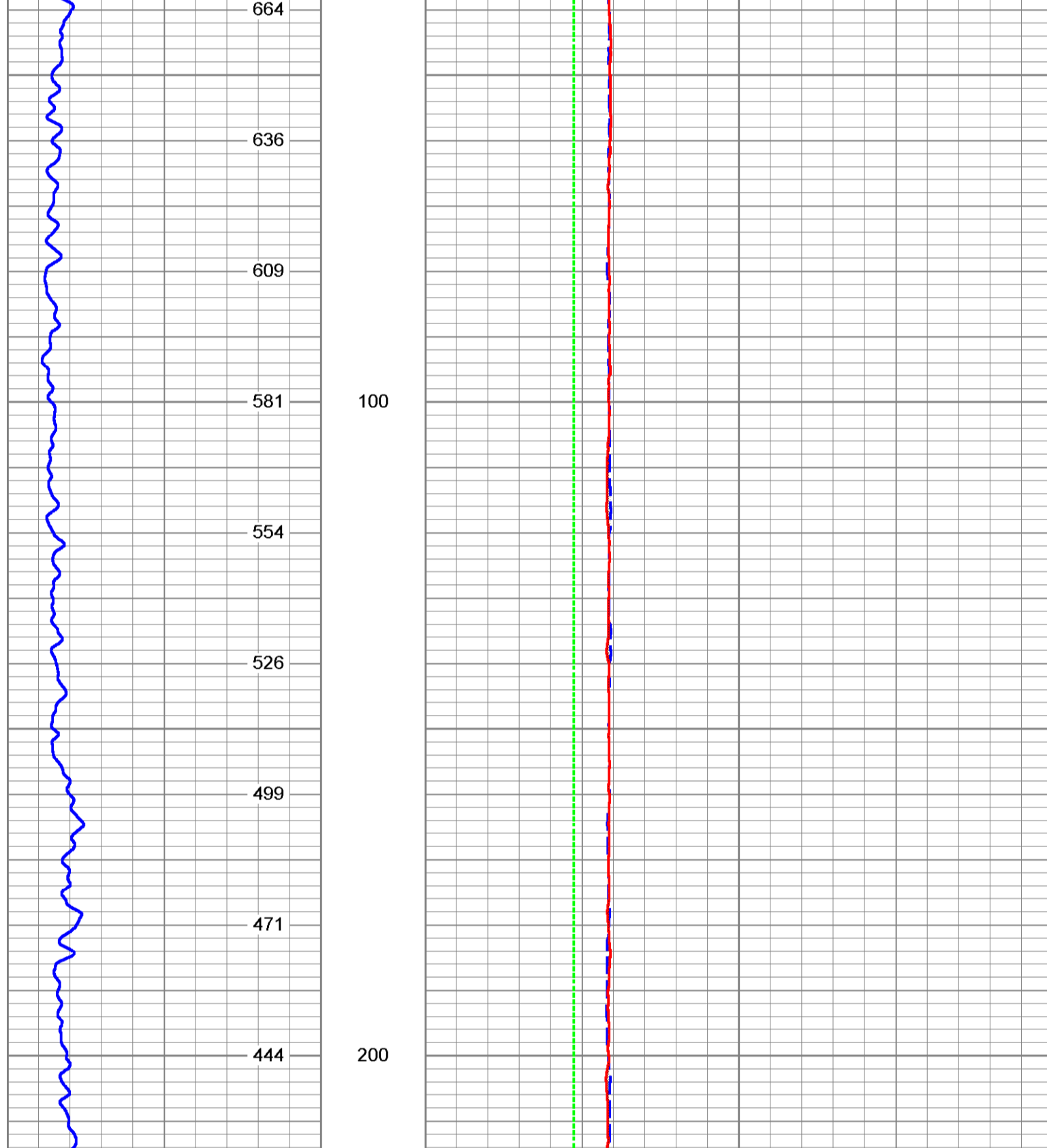
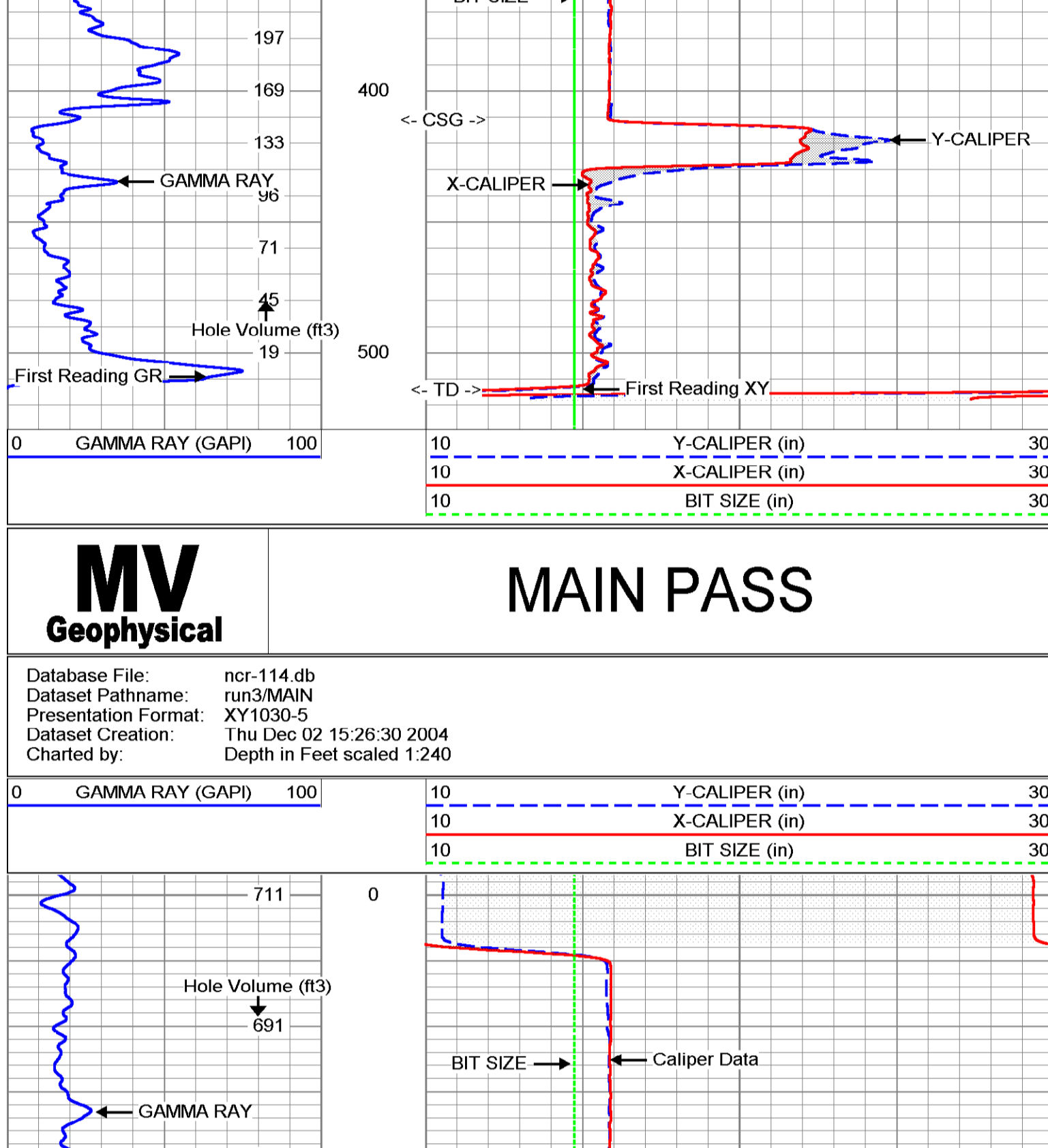
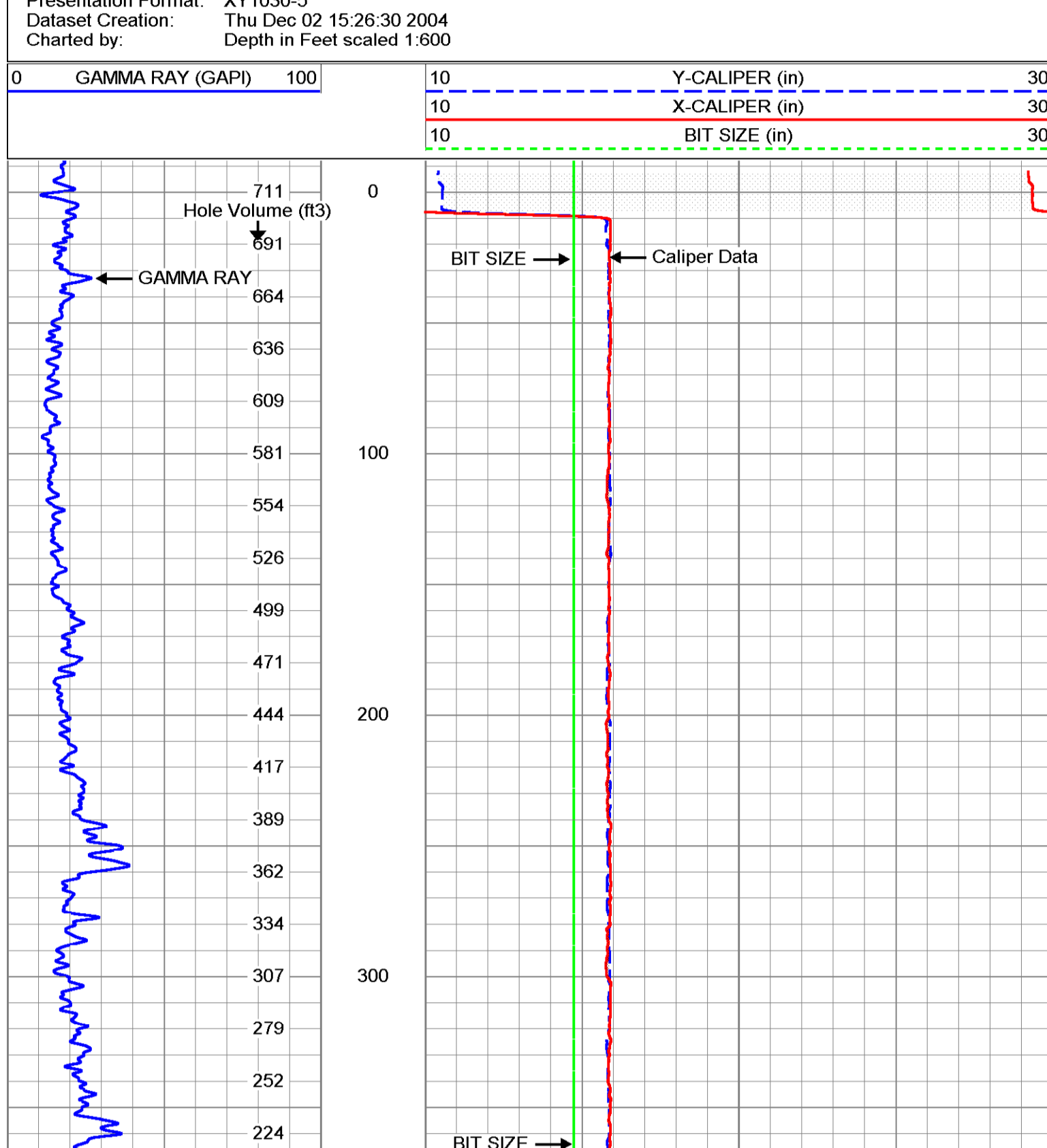
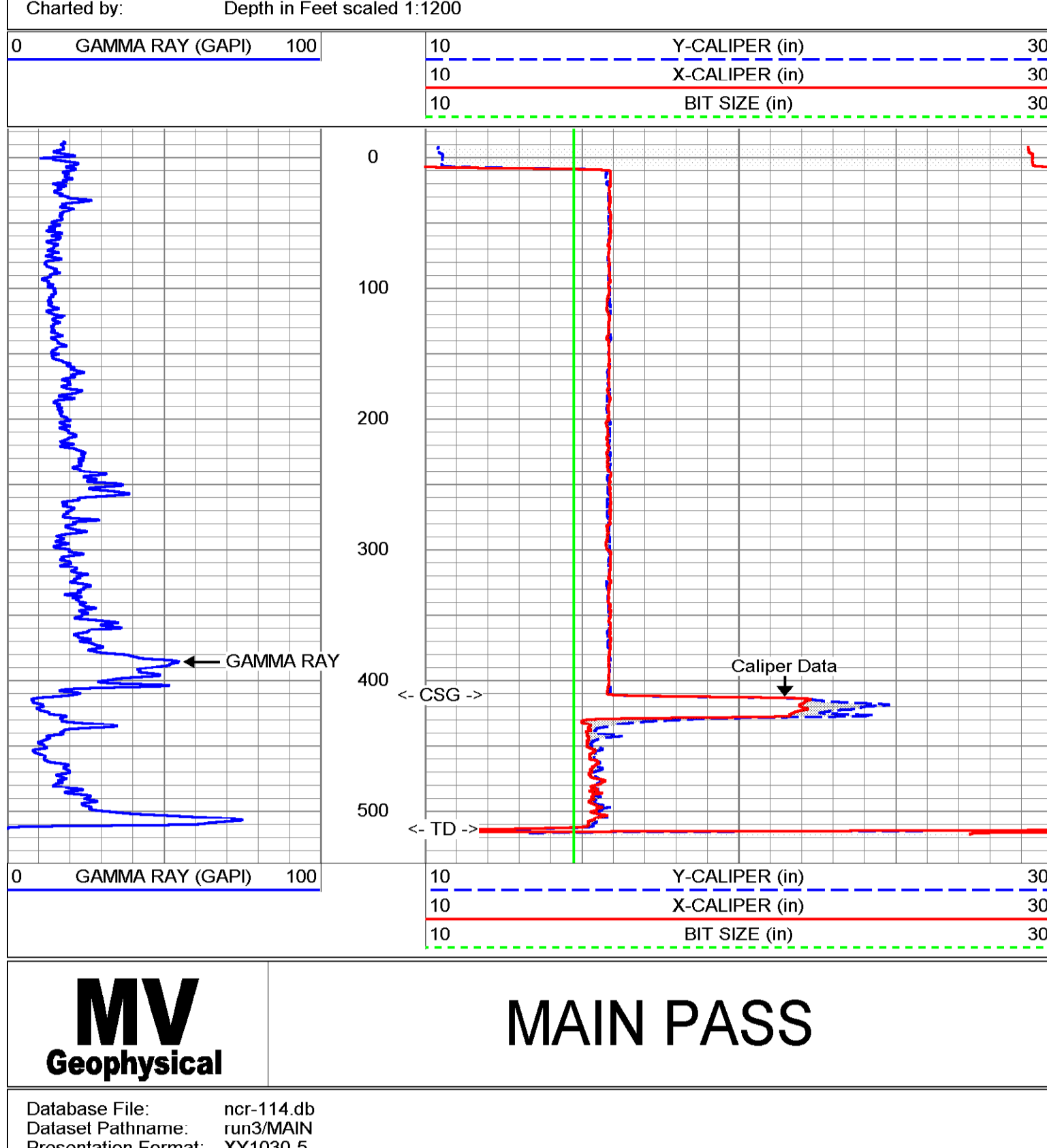
Company	Diversified Drilling Corp.	Well	RO-114	Company	Diversified Drilling Corporation
Field	Naples	County	Collier	Well	RO-114
Location	Permanent Datum	State/Prv	Florida	Field	Naples
Log Measured From	G.L.	County	Collier	County	Collier
Elevation	G.L.	Location	Vanderbilt Road Extension North Collier Regional WTP Hazen & Sawyer, Inc.	State/Prv	Florida
Date	2-DEC-2004	Other Services	FL/SP F/O/W		
Run Number	THREE	Drilling	G.L.		
Bottom Logged Interval	5'4"	Log Measured From	G.L.		
Open Hole Size	5 1/4"	Elevation	G.L.		
Type of Tool	WATER				
Estimated Cement Top	NA				
Time Well Ready	13:30:12/2004				
Equipment Number	FI 1305				
Recorded by	S. Miller				
Witnessed by	J. V. (Handley) (HS)				
Run Number	THREE				
Run Date	12/02/04				
Time of Day	14:25				
Tool Model	412"				
Surface String	15' FBSP				
Production String	15' FBSP				
Log Number	20041168				

<<< Fold Here >>>

All interpretations are opinions based on inferences from electrical or other measurements and we cannot and do not guarantee the accuracy or correctness of any interpretation, and we shall not, except in the case of gross or willful negligence on our part, be liable or responsible for any loss, costs, damages, or expenses incurred or sustained by anyone resulting from any interpretation made by any of our officers, agents or employees. These interpretations are also subject to our general terms and conditions set out in our current Price Schedule.

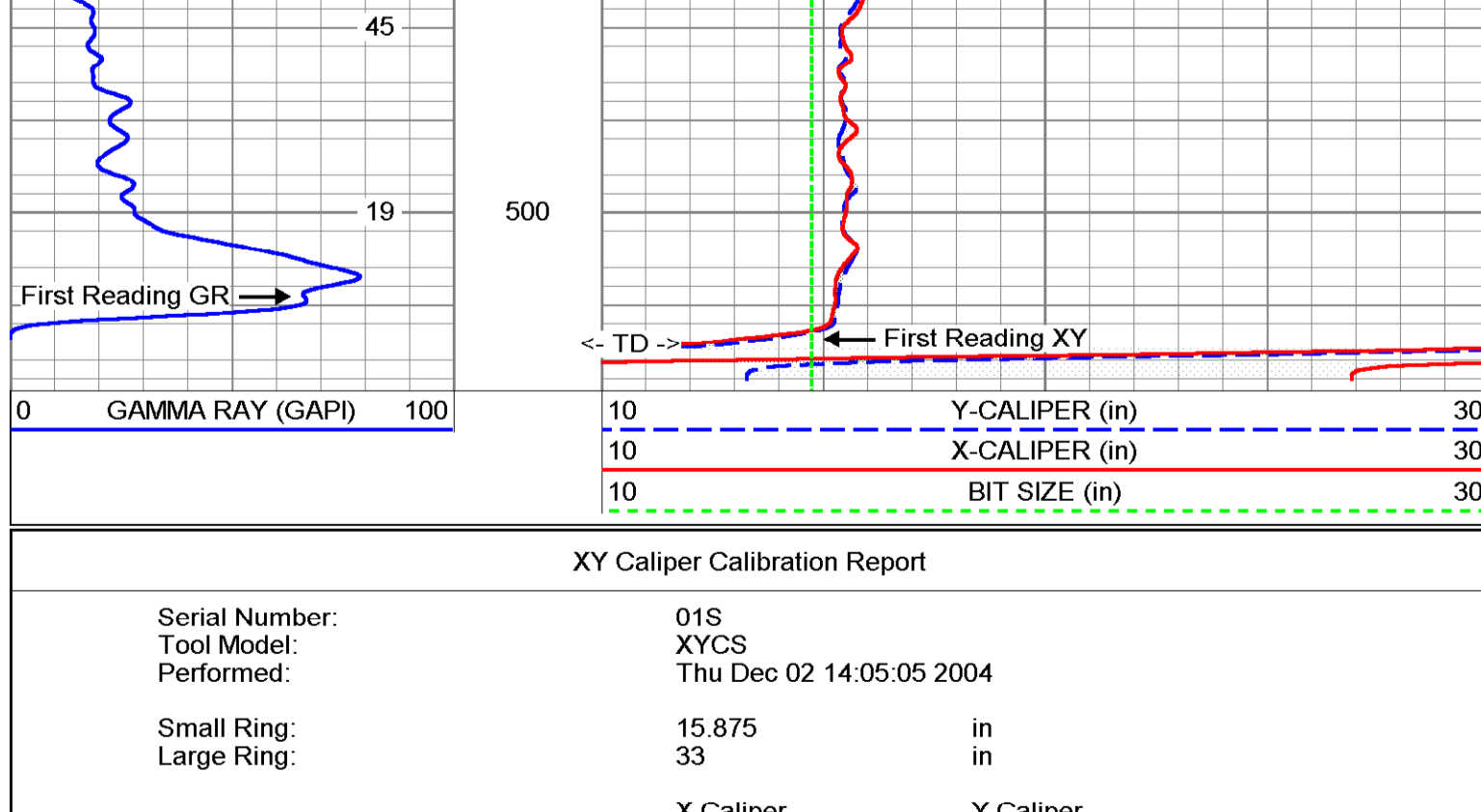
Comments

X-Y Caliper Arm Extensions: 33"



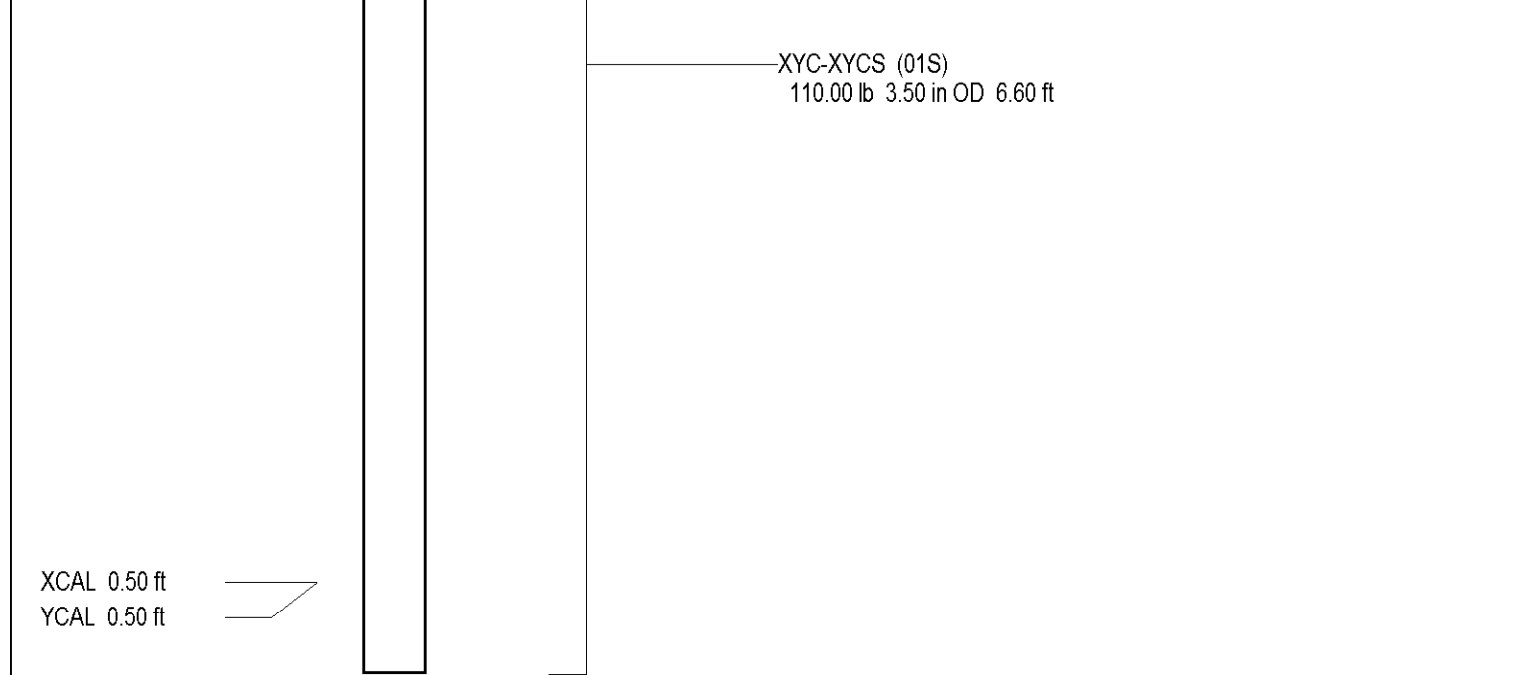
**REPEAT SECTION**

Database File:	ncr-114.db	Dataset Pathname:	run3/REPEAT
Presentation Format:	XY1030-5	Dataset Creation:	Thu Dec 02 13:58:04 2004
Charted by:		Depth in Feet scaled:	1.240



XY Caliper Calibration Report			
Serial Number:	01S	XYCS	
Tool Model:	THREE	Thu Dec 02 14:05:05 2004	
Performed:			
Small Ring:	15.875	in	
Large Ring:	33		
	X Caliper	Y Caliper	
Reading with Small Ring:	657.1	666	cps
Reading with Large Ring:	1051.7	1059.8	cps
Gain:	0.0433984	0.0339639	
Offset:	-12.6421	-6.74498	

Gamma Ray Calibration Report			
Serial Number:	01	GROH	
Tool Model:	THREE	Thu Dec 02 13:01:48 2004	
Performed:			
Calibrator Value:	120	GAPI	
Background Reading:	10.71	cps	
Calibrator Reading:	126.475	cps	
Sensitivity:	1.03658	GAPI/cps	



Dataset:	run3/pass2
Total Length:	9.35 ft
Total Weight:	150.00 lb
O.D.:	3.50 in