



# X-Y CALIPER LOG

Company	Diversified Drilling Corp.
Well	RO-116
Field	Naples
County	Collier
State/Prv	Florida
Location	Vanderbilt Road Extension North Collier Regional WTP Hazen & Sawyer, Inc.
Other Services	NONE
Permanant Datum	G.L.
Log Measured From	G.L.
Drilling Measured From	G.L.
Date	30-DEC-2004
Run Number	ONE
Depth Driller	150'
Depth Logger	155'
Bottom Logged Interval	155'
Top Log Interval	SURFACE
Open Hole Size	32"
Type Fluid	MUD
Density / Viscosity	NA/NA
Max. Recorded Temp.	na
Estimated Cement Top	na
Time Well Ready	08:00 12/30/04
Equipment Number	08:30 12/30/04
Location	FI MERS
Recorded By	S Miller / C Miller
Witnessed By	J Vinevalley (HS)
Run Number	ONE
Bit	32"
Surface	SURFACE
Size	150'
Weight	1800
From	Top
To	Bottom
Casing Record	na
Surface String	na
Prot. String	na
Production String	na
Liner	na
Invoice No.	2004185
P. O. #.	
Job No.	
* FIELD PRINT *	

Company	Diversified Drilling Corporation
Well	RO-116
Field	Naples
County	Collier
State/Prv	Florida
Location	Vanderbilt Road Extension North Collier Regional WTP Hazen & Sawyer, Inc.
Other Services	NONE
Permanant Datum	G.L.
Log Measured From	G.L.
Drilling Measured From	G.L.
Date	30-DEC-2004
Run Number	ONE
Depth Driller	150'
Depth Logger	155'
Bottom Logged Interval	155'
Top Log Interval	SURFACE
Open Hole Size	32"
Type Fluid	MUD
Density / Viscosity	NA/NA
Max. Recorded Temp.	na
Estimated Cement Top	na
Time Well Ready	08:00 12/30/04
Equipment Number	08:30 12/30/04
Location	FI MERS
Recorded By	S Miller / C Miller
Witnessed By	J Vinevalley (HS)
Run Number	ONE
Bit	32"
Surface	SURFACE
Size	150'
Weight	1800
From	Top
To	Bottom
Casing Record	na
Surface String	na
Prot. String	na
Production String	na
Liner	na
Invoice No.	2004185
P. O. #.	
Job No.	
* FIELD PRINT *	

<<< Fold Here >>>

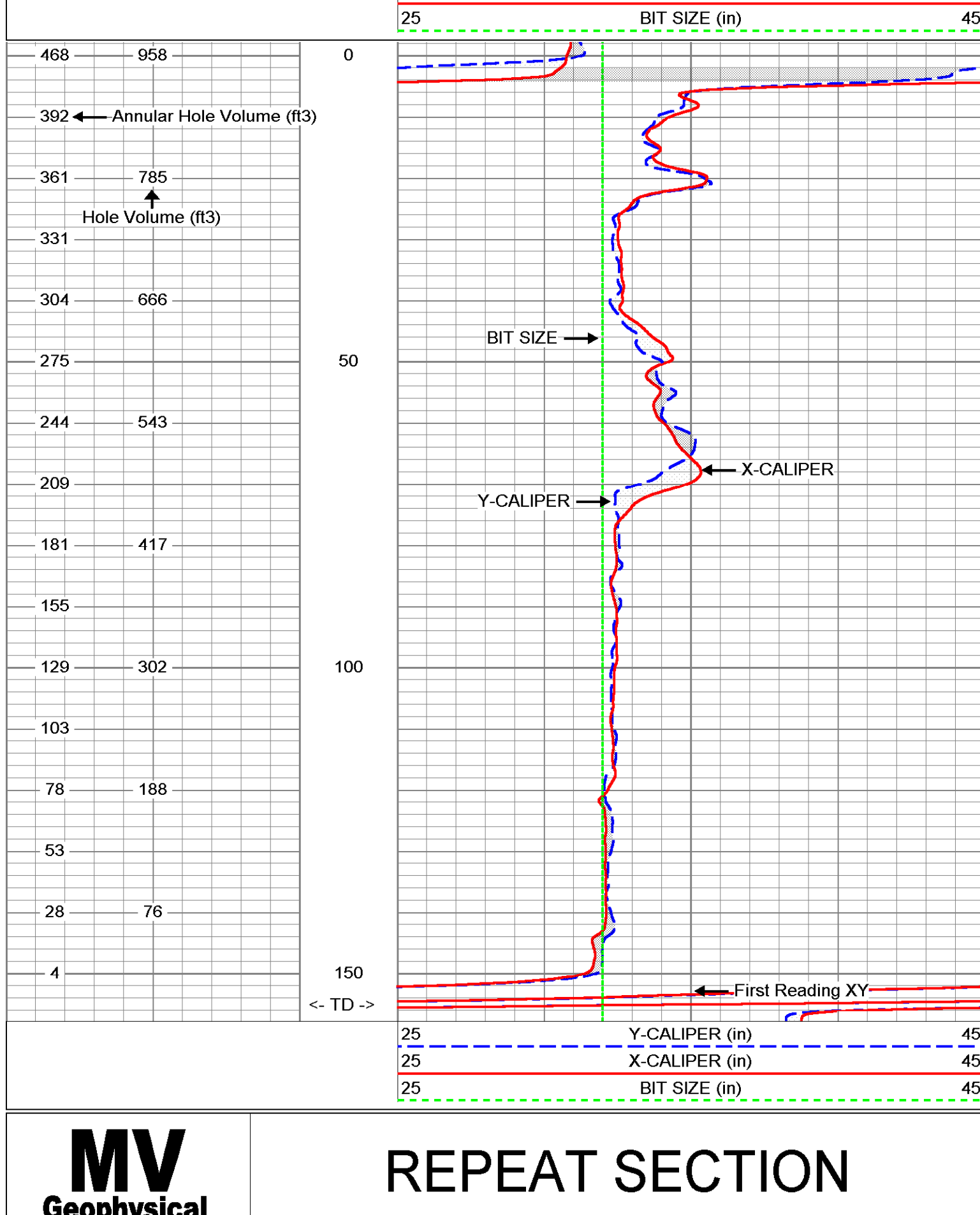
All interpretations are opinions based on inferences from electrical or other measurements and we cannot and do not guarantee the accuracy or correctness of any interpretation, and we shall not, except in the case of gross or willful negligence on our part, be liable or responsible for any loss, costs, damages, or expenses incurred or sustained by anyone resulting from any interpretation made by any of our officers, agents or employees. These interpretations are also subject to our general terms and conditions set out in our current Price Schedule.

## Comments

X-Y Caliper Arm Extensions: 51"  
Future Casing Size: 24"

# MAIN PASS

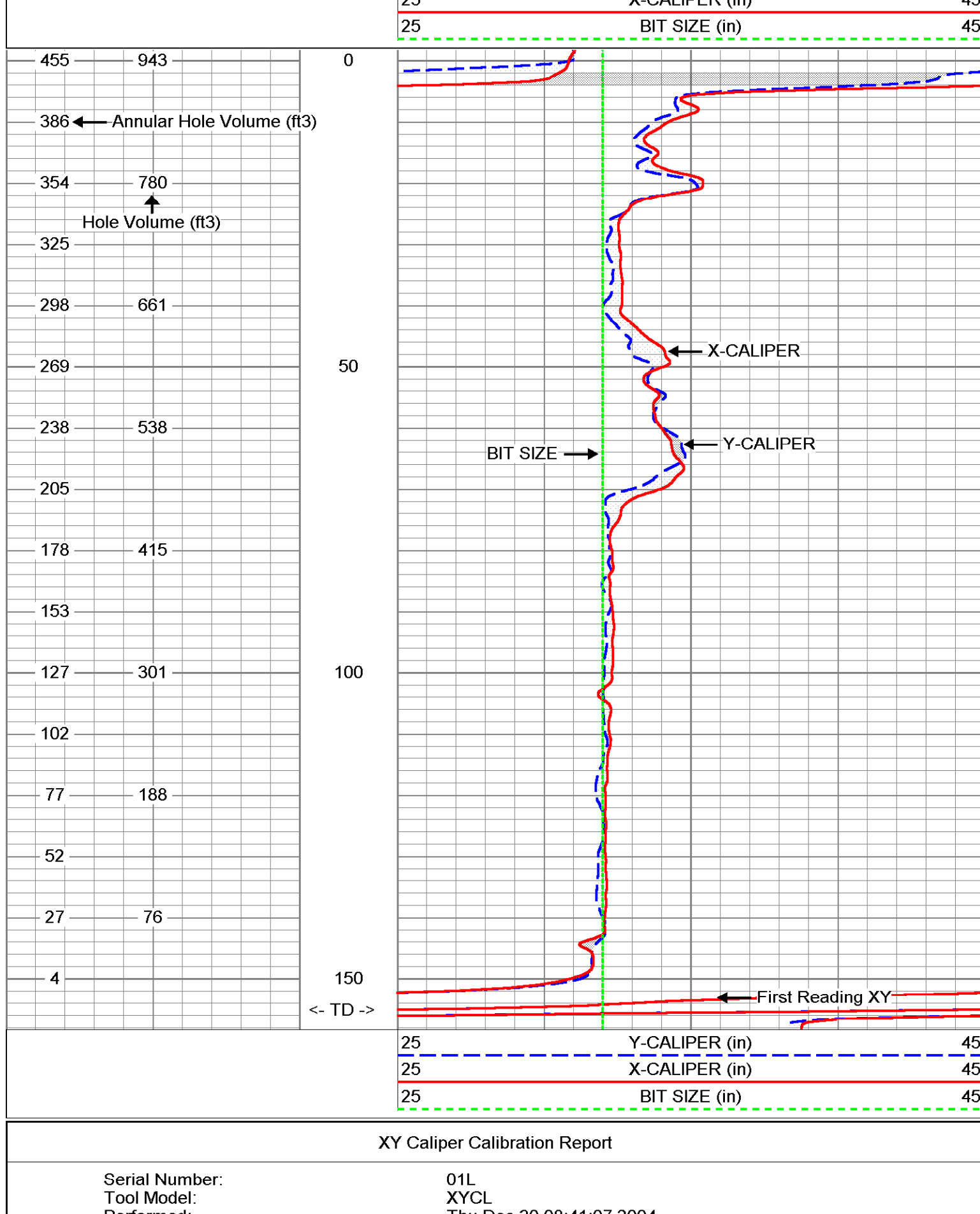
Database File: ncr-116.db  
Dataset Pathname: MAIN  
Presentation Format: XY2545-5  
Dataset Creation: Thu Dec 30 08:59:34 2004  
Charted by: Depth in Feet scaled 1:240



25	Y-CALIPER (in)	45
25	X-CALIPER (in)	45
25	BIT SIZE (in)	45

# REPEAT SECTION

Database File: ncr-116.db  
Dataset Pathname: REPEAT  
Presentation Format: XY2545-5  
Dataset Creation: Thu Dec 30 08:48:37 2004  
Charted by: Depth in Feet scaled 1:240

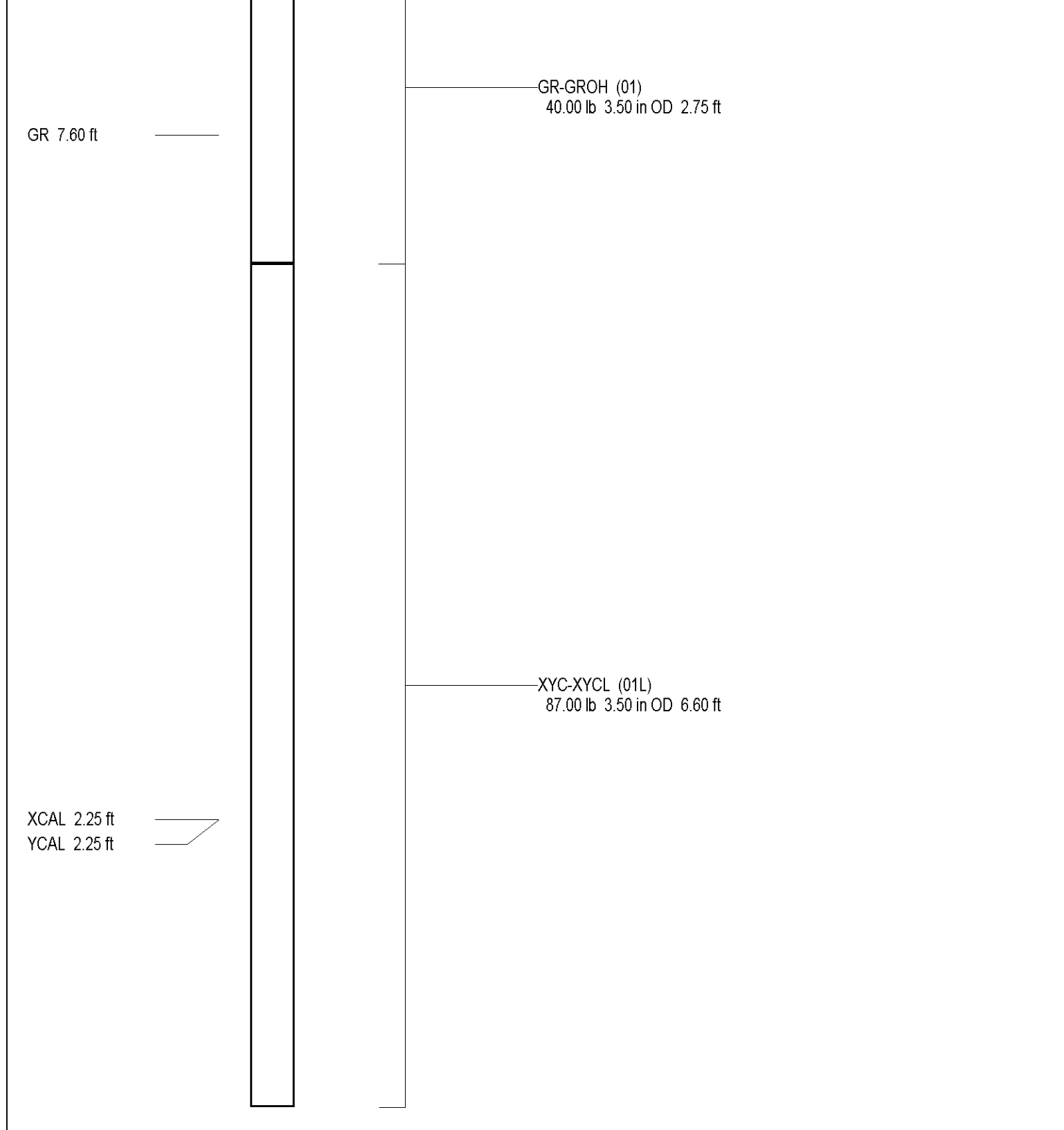


## XY Caliper Calibration Report

Serial Number:	01L
Tool Model:	XYCL
Performed:	Thu Dec 30 08:41:07 2004
Small Ring:	32 in
Large Ring:	51 in
Reading with Small Ring:	767
Reading with Large Ring:	1040.71
Gain:	0.0694165
Offset:	-21.2425
X Caliper	774
Y Caliper	1047.51
	cps
	cps

## Gamma Ray Calibration Report

Serial Number:	01
Tool Model:	GROH
Performed:	Sun Dec 19 13:56:58 2004
Calibrator Value:	120
Background Reading:	10.716 cps
Calibrator Reading:	126.47 cps
Sensitivity:	1.03668
	GAPI/cps



Dataset: run1/pass1  
Total Length: 9.35 ft  
Total Weight: 127.00 lb  
O.D.: 3.50 in

Company	Diversified Drilling Corp.	Well	RO-116
Field	Naples	County	Collier
State/Prv	Florida	Location	Vanderbilt Road Extension North Collier Regional WTP Hazen & Sawyer, Inc.
Company	Diversified Drilling Corporation	Well	RO-116
Field	Naples	County	Collier
State/Prv	Florida	Other Services	NONE
Location	Vanderbilt Road Extension North Collier Regional WTP Hazen & Sawyer, Inc.	Permanent Datum	G.L.
Run Number	TWO	Log Measured From	G.L.
Date	10-JAN-2005	Elevation	
Drilling Measured From	G.L.	K.B.	
Run Number	TWO	D.O.	G.L.
Depth Driller	435'	Drilling Interval	10-JAN-2005
Depth Logger	435'	Open Hole Size	2 1/2"
Bottom Logged Interval	433'	Type Fluid	WUD
Top Log Interval	SURFACE	Density / Viscosity	NAWD
Open Hole Size	2 1/2"	Max. recorded Temp.	NAWA
Type Fluid	WUD	Estimated cement top	NA
Density / Viscosity	NAWD	Estimated cement top	NA
Max. recorded Temp.	NAWA	Time Log Start Bottom	08:30 1/10/05
Estimated cement top	NA	Time Log End Bottom	09:00 1/10/05
Time Log Start Bottom	08:30 1/10/05	FI Meters	
Time Log End Bottom	09:00 1/10/05	Equipment Number	
FI Meters		Location	
Equipment Number		Recorded By	S Miller
Location		Witnessed By	J. Wheatley (HS)
Recorded By	S Miller	Bohndie Record	
Witnessed By	J. Wheatley (HS)	Run Number	ONE
Bohndie Record		Bit	3 1/2"
Run Number	ONE	From	SURFACE
Bit	3 1/2"	To	435'
From	SURFACE	Size	150'
To	435'	Weight	
Size	150'	From	
Weight		To	
From		Top	
To		Bottom	
Top		Surfacing	24"
Bottom		Stringing	31/32 WT
Surfacing	24"	Producting	
Stringing	31/32 WT	Line	
Producting		Phone No.	2006004
Line		P.O. #.	
Phone No.	2006004	JOB No.	
P.O. #.		*FIELD PRINT*	

<<< Fold Here >>>

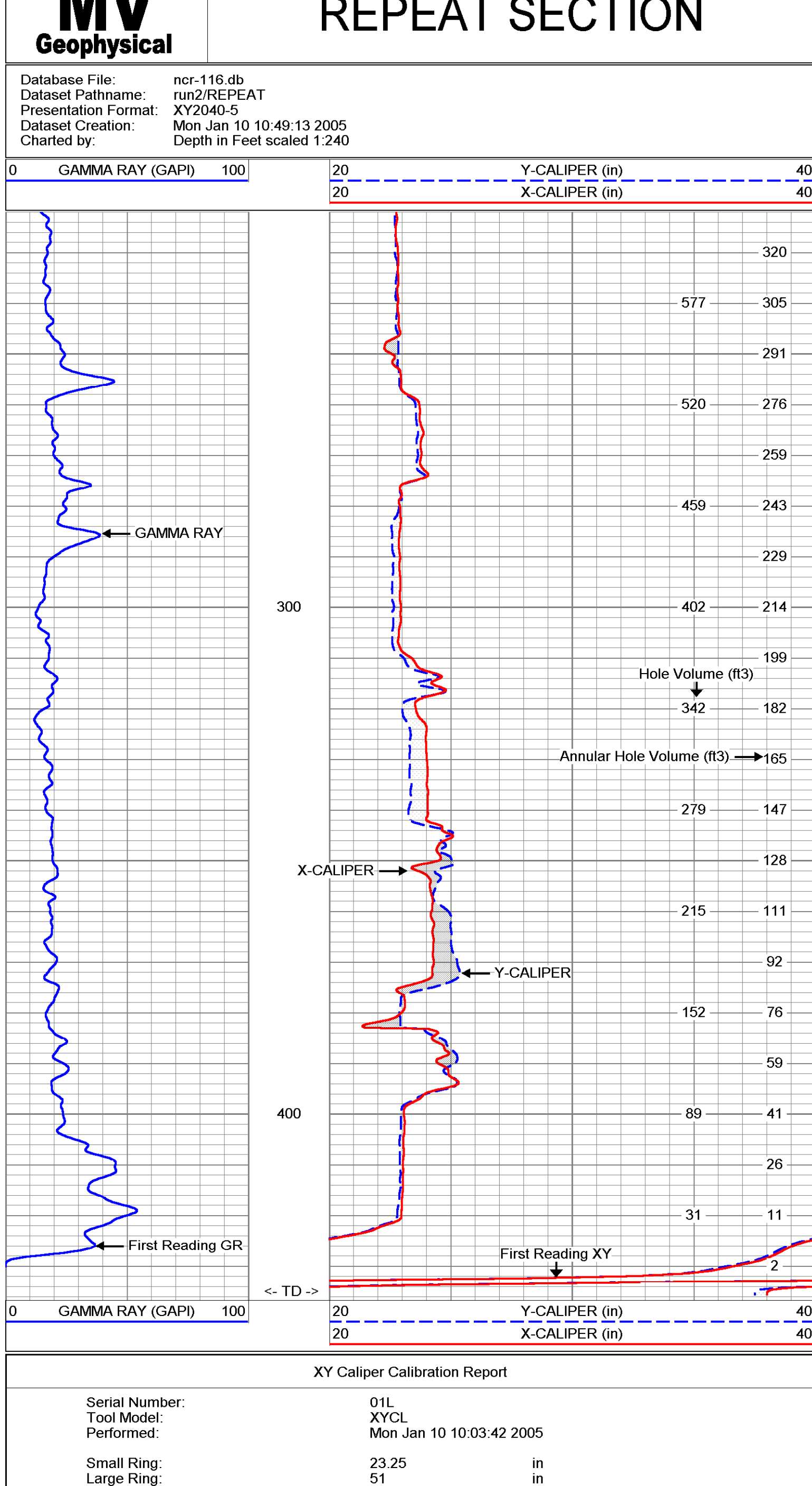
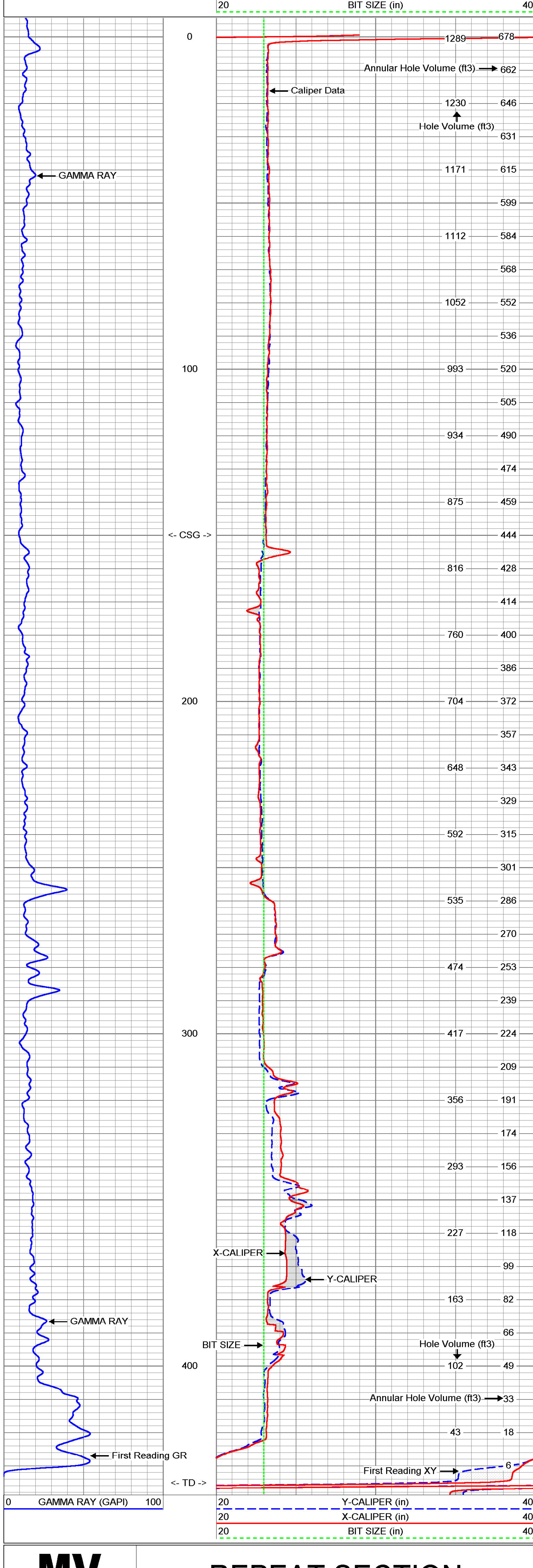
All interpretations are opinions based on inferences from electrical or other measurements and we cannot and do not guarantee the accuracy or correctness of any interpretation, and we shall not, except in the case of gross or willful negligence on our part, be liable or responsible for any loss, costs, damages, or expenses incurred or sustained by anyone resulting from any interpretation made by any of our officers, agents or employees. These interpretations are also subject to our general terms and conditions set out in our current Price Schedule.

**Comments**

X-Y Caliper Arm Extensions: 51"

Future Casing Size: 16"

Hole Volume Calculations in cubic feet.

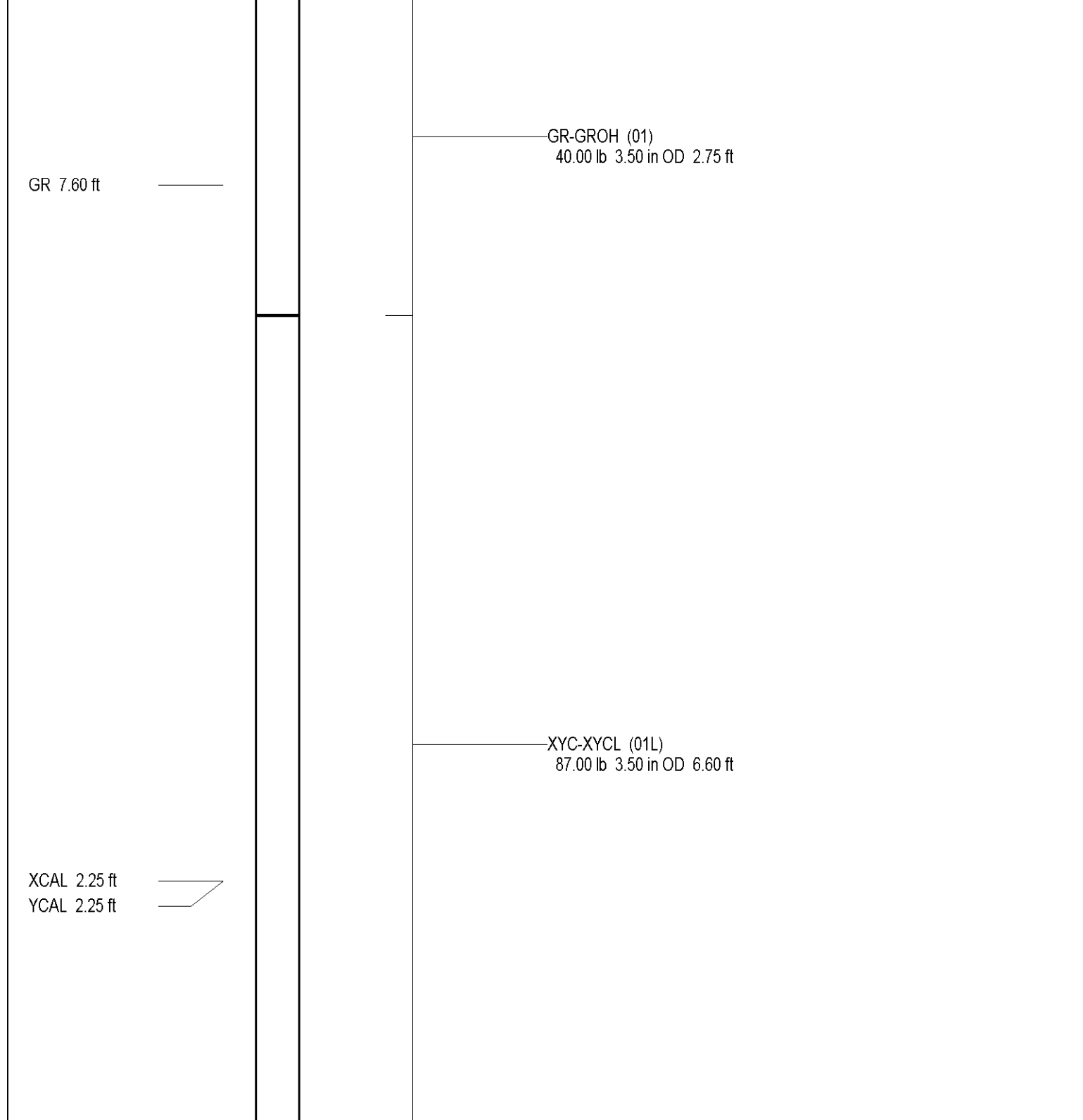


**XY Caliper Calibration Report**

Serial Number:	01L
Tool Model:	XYCL
Performed:	Mon Jan 10 10:03:42 2005
Small Ring:	23.25 in
Large Ring:	51 in
Reading with Small Ring:	680 cps
Reading with Large Ring:	1045.71 cps
Gain:	0.0758798
Offset:	-28.3483

**Gamma Ray Calibration Report**

Serial Number:	01
Tool Model:	GROH
Performed:	Mon Jan 10 09:22:29 2005
Calibrator Value:	120 GAPI
Background Reading:	10.715 cps
Calibrator Reading:	126.471 cps
Sensitivity:	1.03666 GAPI/cps



Dataset: run2/pass2  
 Total Length: 9.35 ft  
 Total Weight: 127.00 lb  
 O.D.: 3.50 in



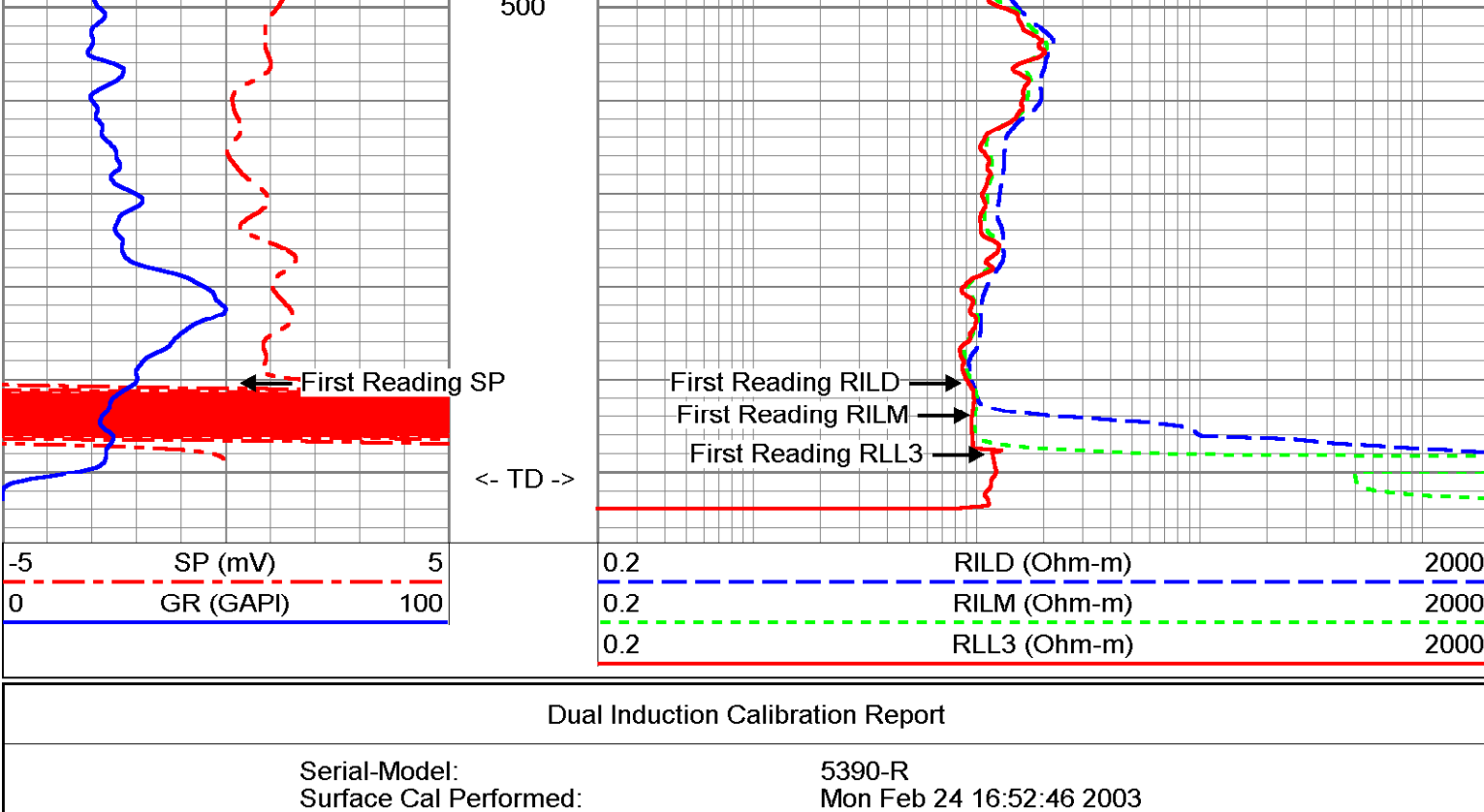
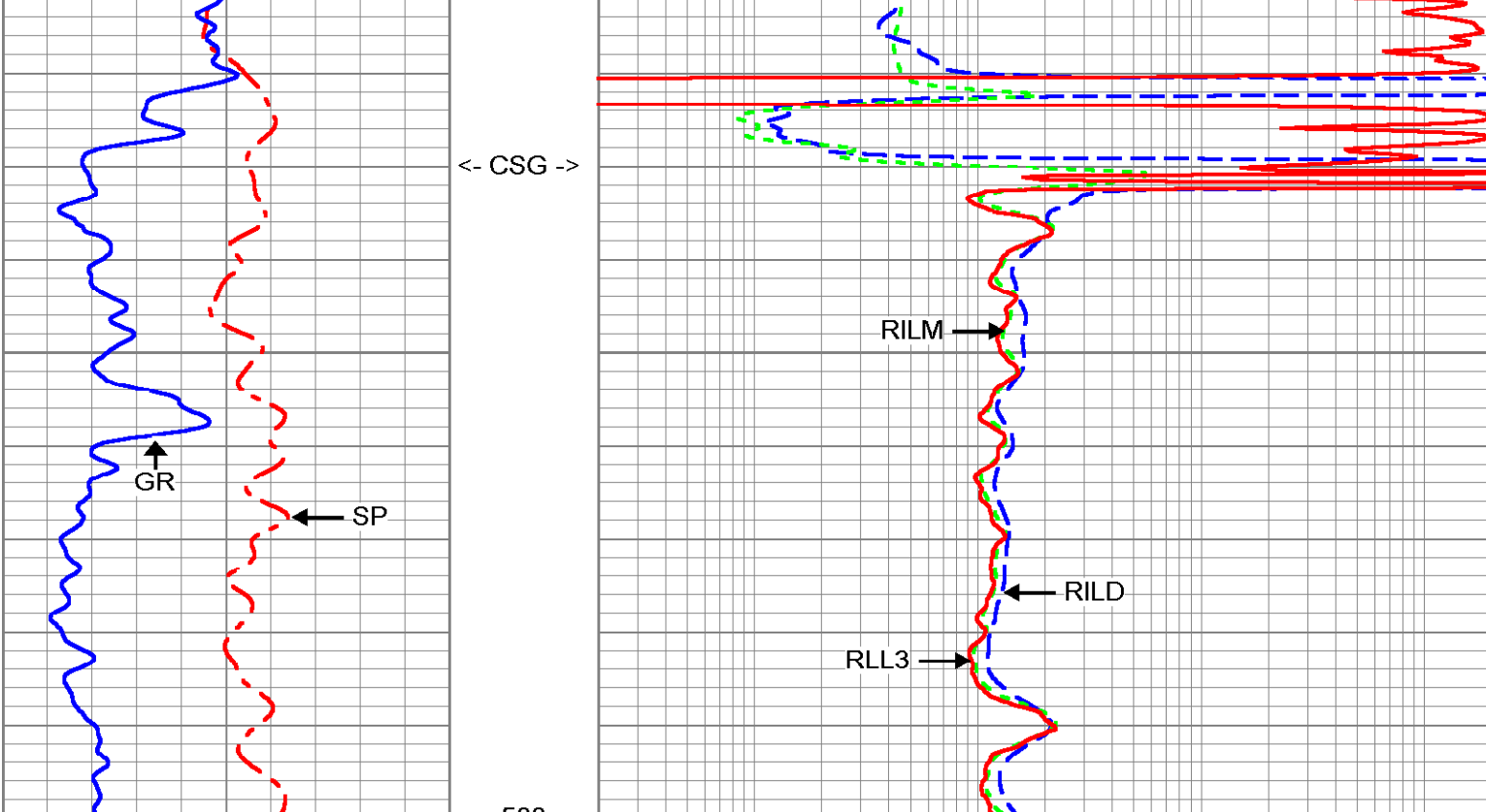
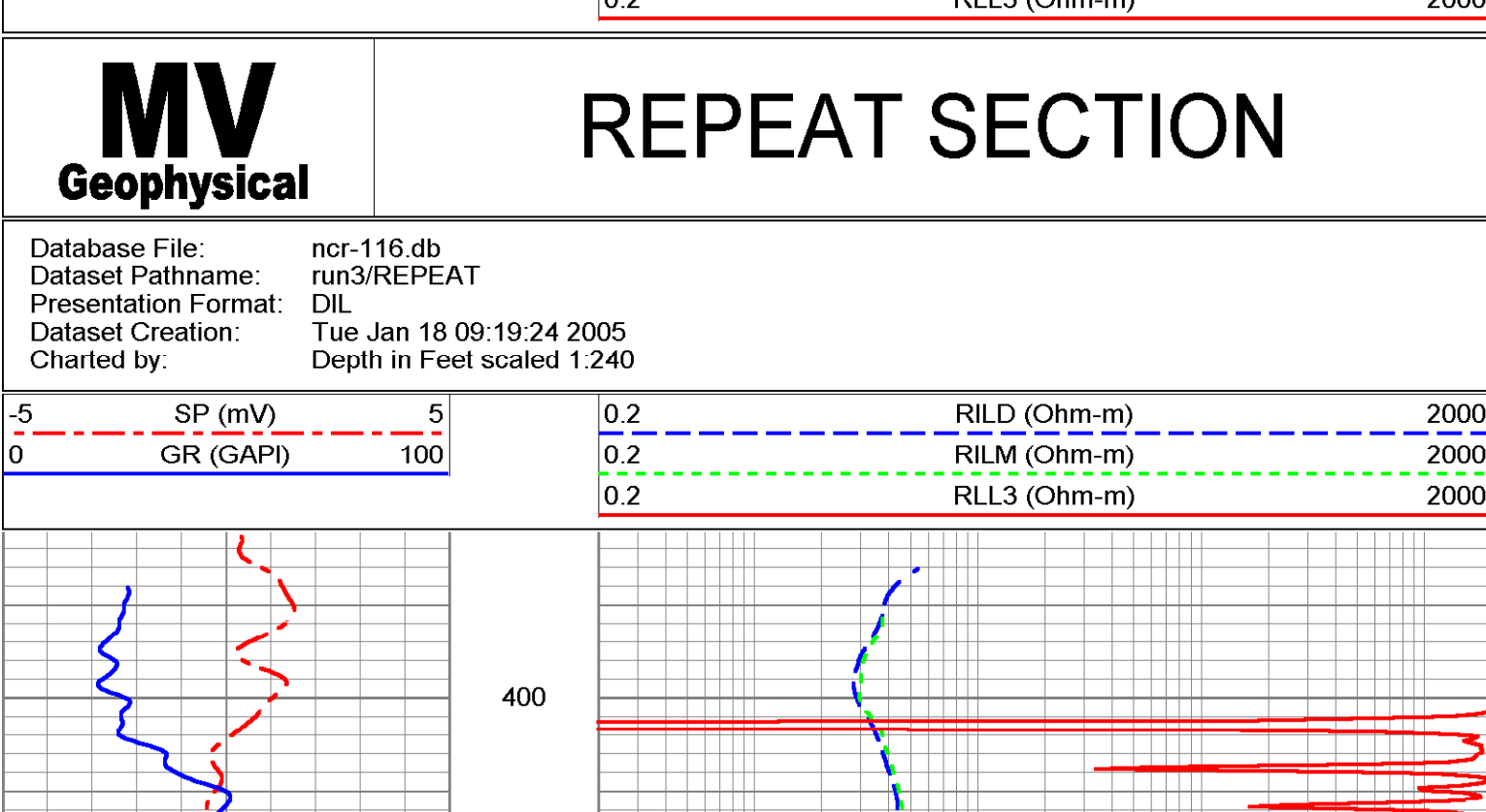
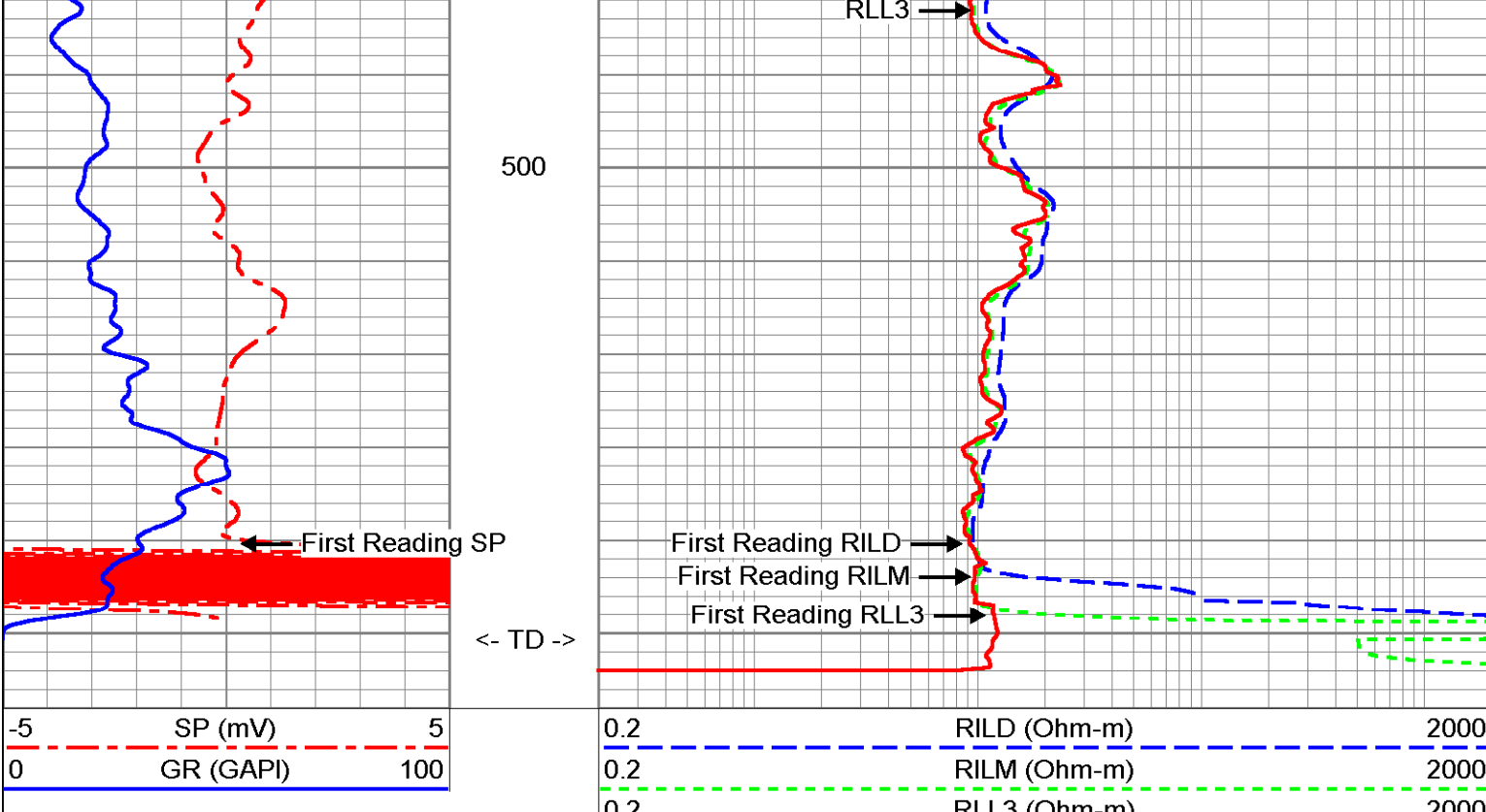
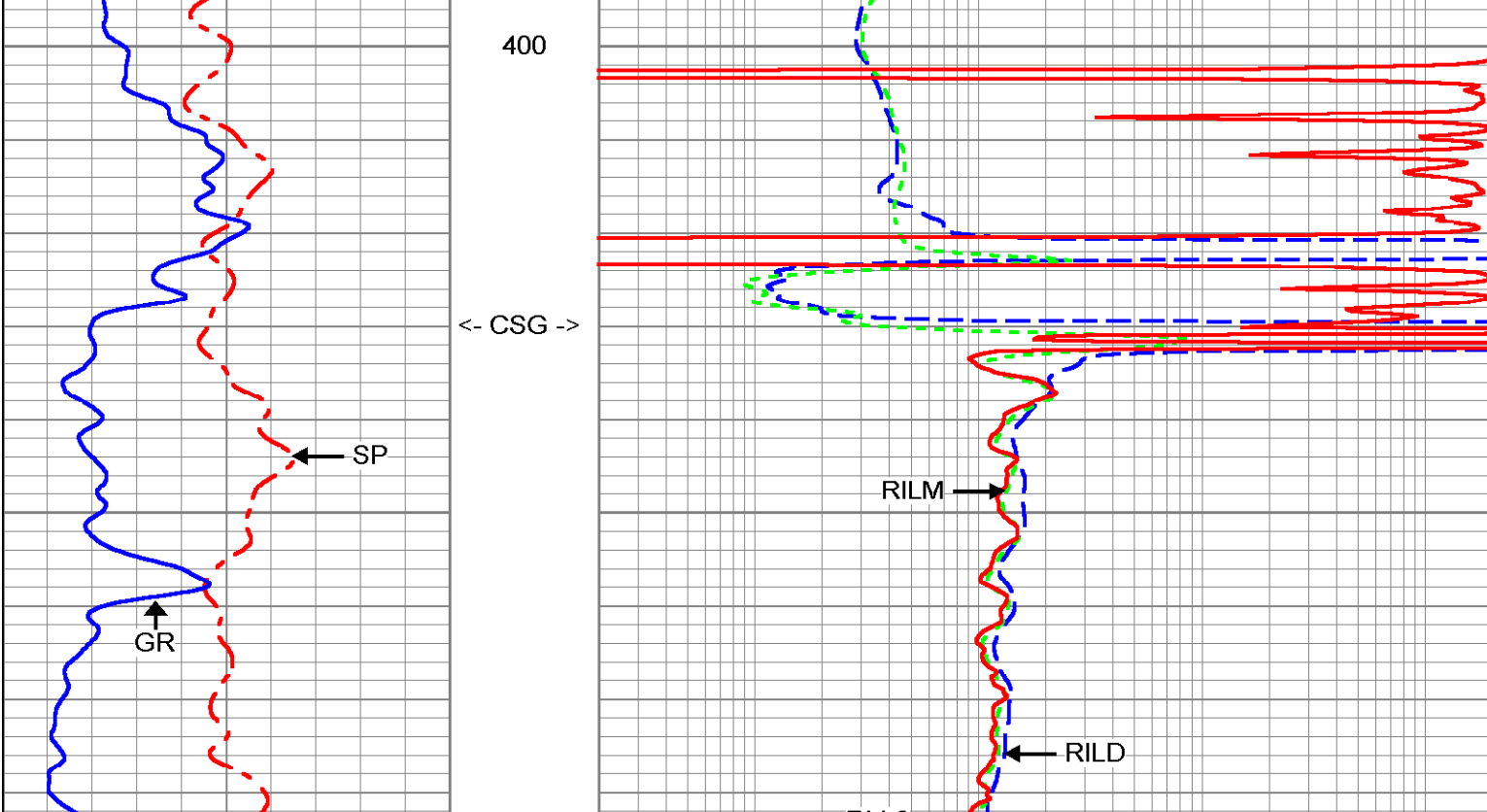
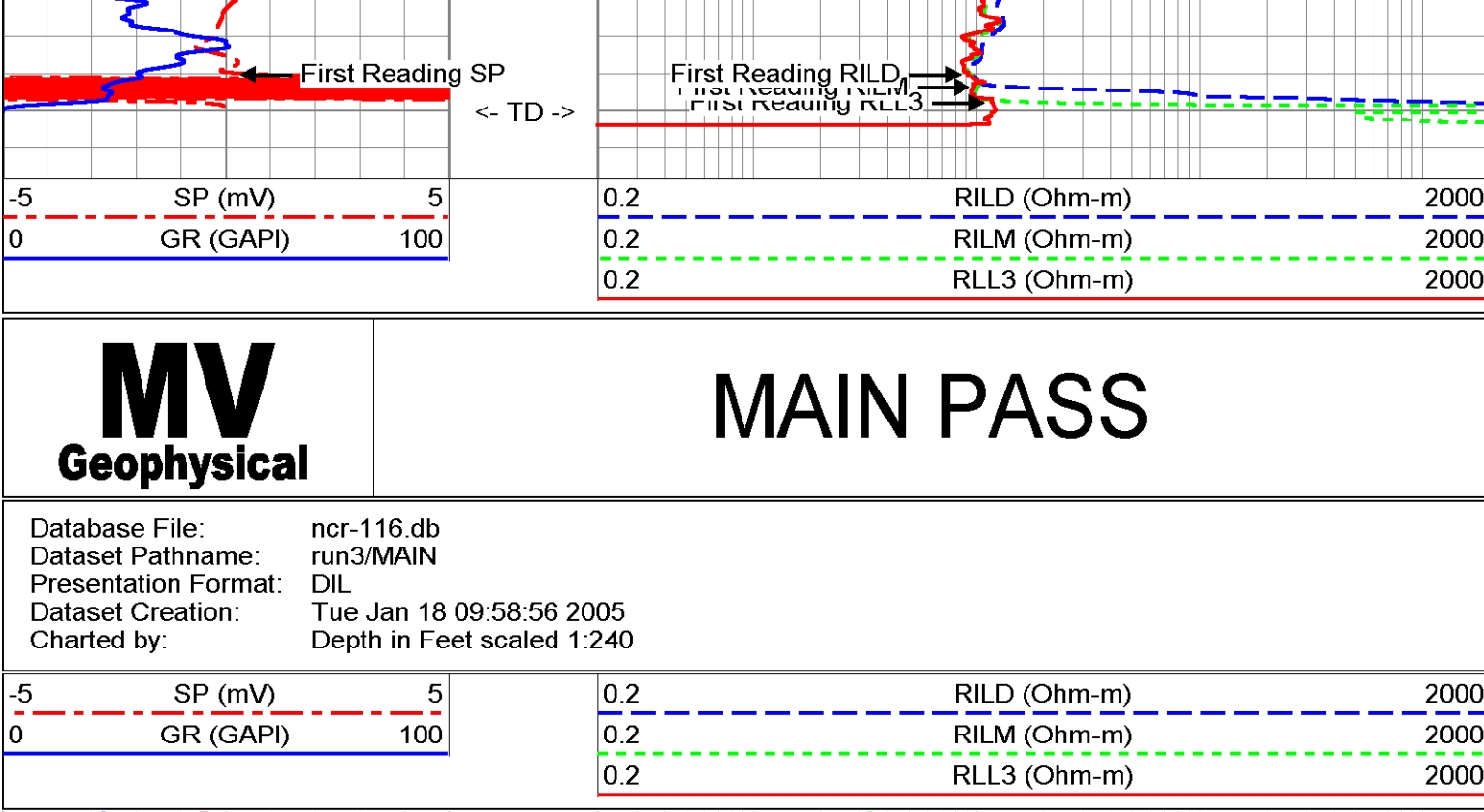
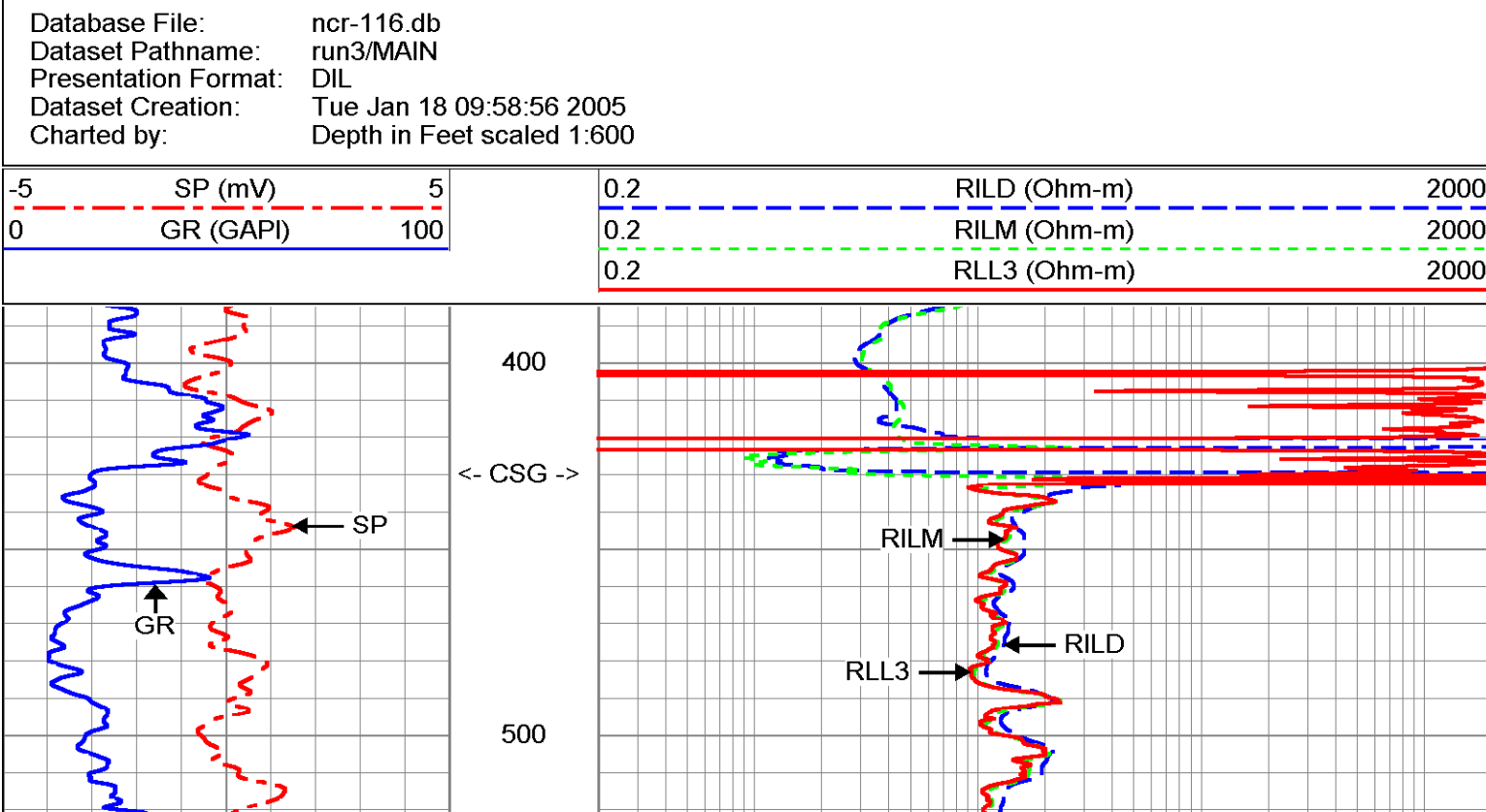
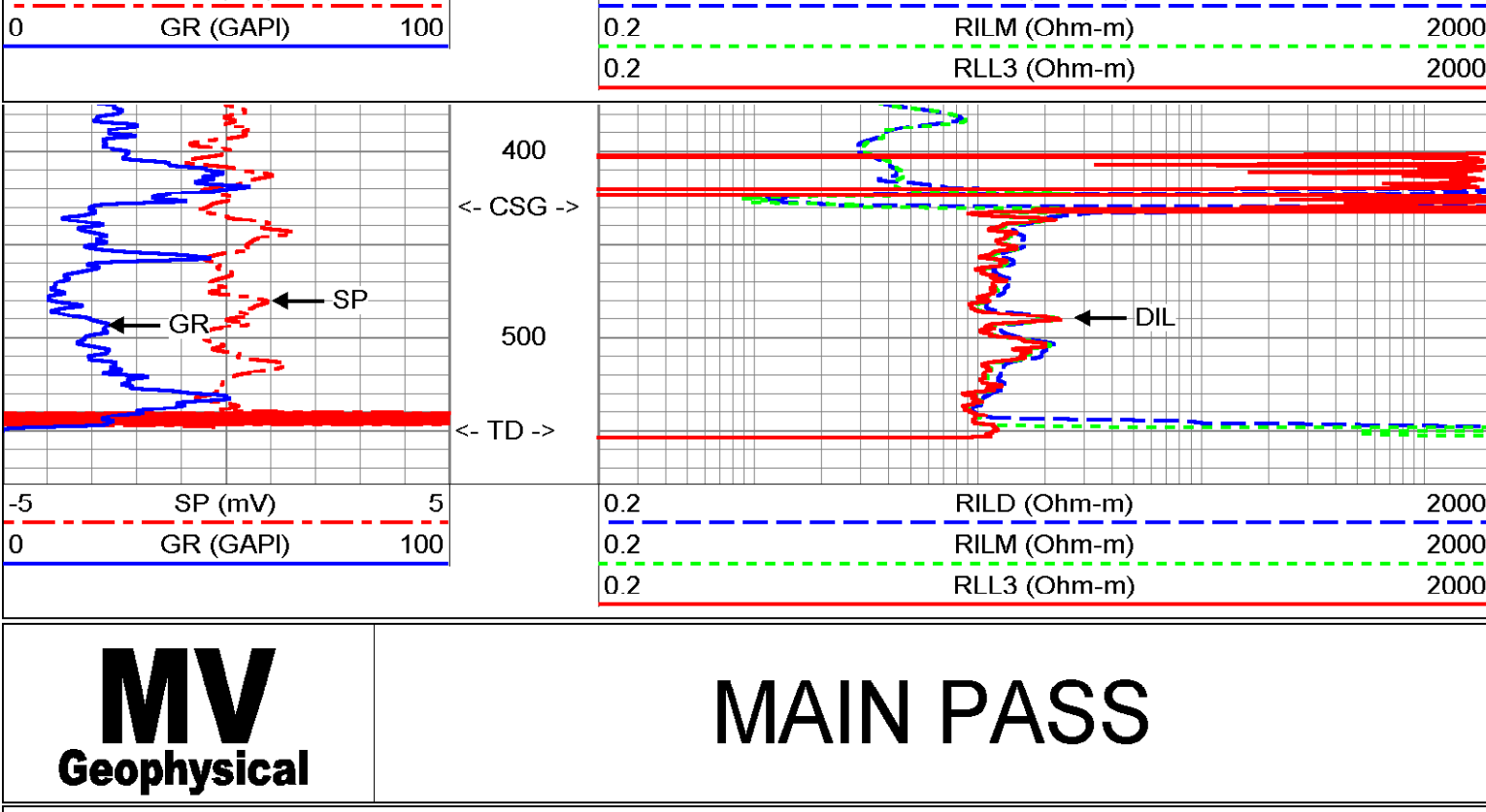
Company	Diversified Drilling Corp.	Well	RO-116	Company	Diversified Drilling Corporation
Field	Naples	County	Collier	Field	Naples
State/Prv	Florida	County	Collier	State/Prv	Florida
Location	Vanderbilt Road Extension North Collier Regional WTP Hazen & Sawyer, Inc.	Location	Collier	Other Services	X/Y/GR FCT FLOW
Permanent Datum	G.L.	Elevation	G.L.	K/B	G.L.
Log Measured From	G.L.	Drilling Measured From	G.L.	D/F	G.L.
Date	18-JAN-2005	Run Number	THREE		
Depth Driller	550'	Bottom Logger	550'		
Bottom Logged Interval	548'	Top Log Interval	430'		
Open Hole Size	14.75"	Type Fluid	H2O		
Density / Viscosity	NA/NA	Max. Recd. Temp.	NA		
Turned Cement Top	08.00.11.0105	Time Last Cement	10.00.11.0105		
Time Last Cement	10.00.11.0105	Equipment Number	MNCS-1		
Location	FL Myers	Recorded By	S. Miller		
Wellhead	J.M. Weatherly (HS)	Wellhead	Roscoe (DDC)		
Run Number	ONE	Bit	32"	Surface	150'
ONE	32"	SURFACE	435'	TD	150'
THREE	14.75"	430'	560'		
Size	33.75"	Weight	130	Bottom	430
Surface	16" TRP	Surface	15.975" ID	Surface	430
Line	2009011	Job No.			

<<< Fold Here >>>

All interpretations are opinions based on inferences from electrical or other measurements and we cannot and do not guarantee the accuracy or correctness of any interpretation, and we shall not, except in the case of gross or willful negligence on our part, be liable or responsible for any loss, costs, damages, or expenses incurred or sustained by anyone resulting from any interpretation made by any of our officers, agents or employees. These interpretations are also subject to our general terms and conditions set out in our current Price Schedule.

Comments

Rw=2.268 ohm-m @ 78.8 degF



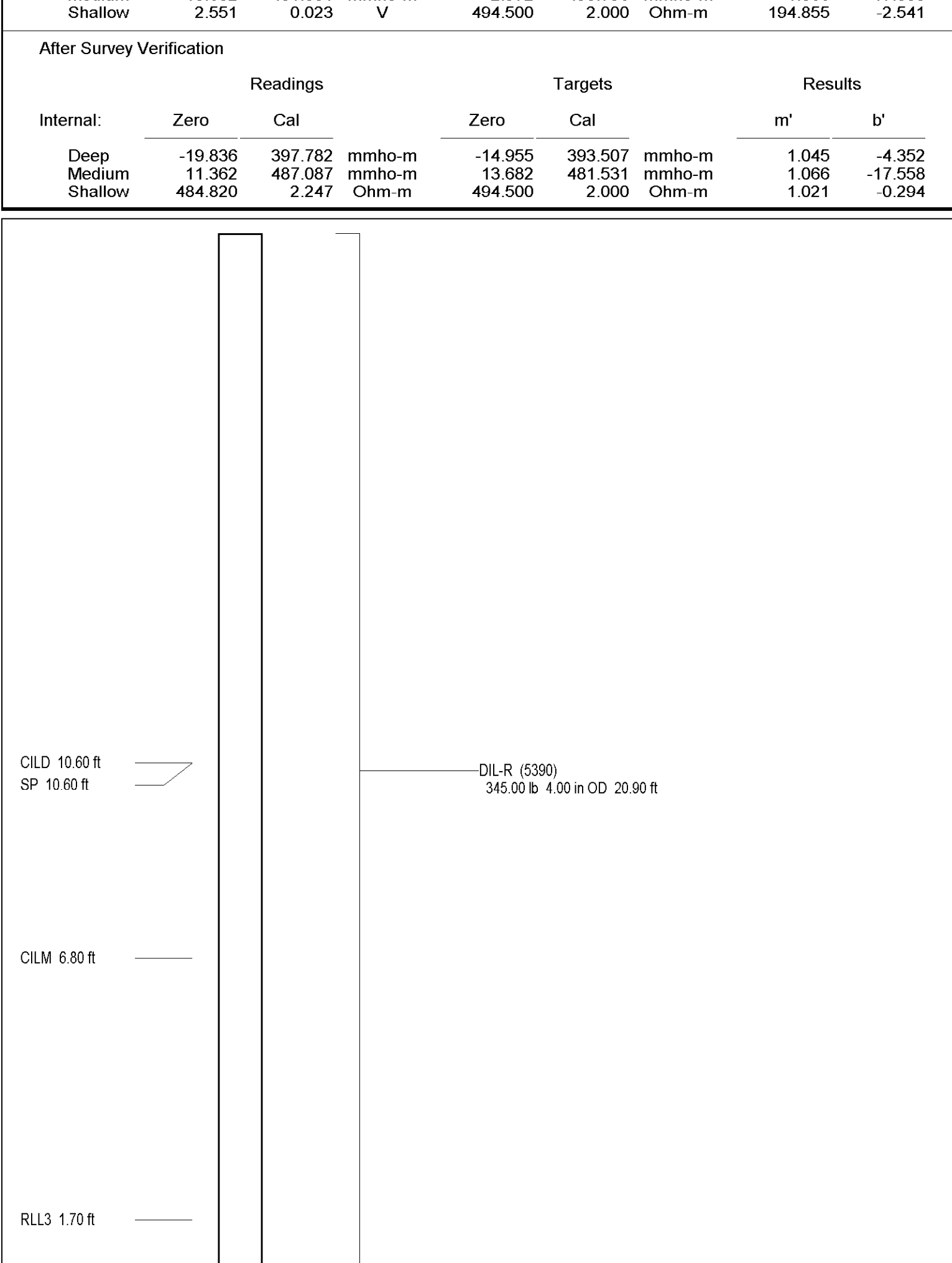
Dual Induction Calibration Report

Serial-Model:	5390-R
Surface Cal Performed:	Mon Feb 24 16:52:46 2003
Downhole Cal Performed:	Tue Jan 18 09:54:47 2005
After Survey Verification Performed:	Tue Jan 18 10:41:09 2005

Surface Calibration		Readings		References		Results			
Loop:	Air	Loop	Air	Loop	m	b			
Deep	0.041	0.637	V	0.000	400.000	mmho-m	670.900	-27.223	
Medium	-0.006	0.700	V	0.000	464.000	mmho-m	656.366	4.251	
Internal:		Zero	Cal	Zero	Cal		m	b	
Deep		0.011	0.647	V	0.000	400.000	mmho-m	628.552	-6.783
Medium		-0.011	0.749	V	0.000	464.000	mmho-m	610.612	6.720

Downhole Calibration		Readings		References		Results			
Internal:	Zero	Cal	Zero	Cal	m	b			
Deep		-14.955	393.507	mmho-m	-19.983	406.966	mmho-m	1.045	-4.352
Medium		13.682	481.531	mmho-m	-2.972	495.796	mmho-m	1.066	-17.558
Shallow		2.551	0.023	V	494.500	2.000	Ohm-m	194.855	-2.541

After Survey Verification		Readings		Targets		Results			
Internal:	Zero	Cal	Zero	Cal	m'	b'			
Deep		-19.836	397.782	mmho-m	-14.955	393.507	mmho-m	1.045	-4.352
Medium		11.362	487.087	mmho-m	13.682	481.531	mmho-m	1.066	-17.558
Shallow		484.820	2.247	Ohm-m	494.500	2.000	Ohm-m	1.021	-0.294



Company Diversified Drilling Corp.		Company Diversified Drilling Corporation	
Well RO-116	Field Naples	Well RO-116	Field Naples
County Collier	State/Prv Florida	County Collier	State/Prv Florida
Location Vanderbilt Road Extension North Collier Regional WTP Hazen & Sawyer, Inc.		Location Vanderbilt Road Extension North Collier Regional WTP Hazen & Sawyer, Inc.	
Permanent Datum	Elevation	Permanent Datum	Elevation
Log Measured From	G.L.	Log Measured From	G.L.
Drilling Measured From	G.L.	Drilling Measured From	G.L.
Date	18-JAN-2005	Date	18-JAN-2005
Run Number	THREE	Run Number	THREE
Depth Driller	560'	Depth Driller	560'
Depth Logger	560'	Depth Logger	560'
Bottom Logged Interval	548'	Bottom Logged Interval	548'
Top Log Interval	430'	Top Log Interval	430'
Open Hole Size	14.75"	Open Hole Size	14.75"
Type Fluid	H2O	Type Fluid	H2O
Density / Viscosity	MMMA	Density / Viscosity	MMMA
Max. Recorded Temp.	na	Max. Recorded Temp.	na
Estimated Cement Top	na	Estimated Cement Top	na
Time Well Ready	08:00 1/18/05	Time Well Ready	08:00 1/18/05
Time Logger on Bottom	08:30 1/18/05	Time Logger on Bottom	08:30 1/18/05
Equipment Number	MWGS-1	Equipment Number	MWGS-1
Location	Ft. Myers	Location	Ft. Myers
Recorded By	S. Miller	Recorded By	S. Miller
Witnessed By	J. Whelanley (HS)	Witnessed By	J. Whelanley (HS)
Borehole Record		Tubing Record	
Run Number	Bit	Run Number	Bit
ONE	32"	ONE	32"
TWO	150'	TWO	150'
THREE	14.75"	THREE	14.75"
Casing Record	Size	Casing Record	Size
Surface String	24"	Surface String	24"
Prot. String	16" FRP	Prot. String	16" FRP
Production String	15.875" ID	Production String	15.875" ID
Lineer		Lineer	
Invoice No.	20050111	Invoice No.	20050111
P.O. #.		P.O. #.	
Job No.:		Job No.:	
*FIELD PRINT*			

<<< Fold Here >>>

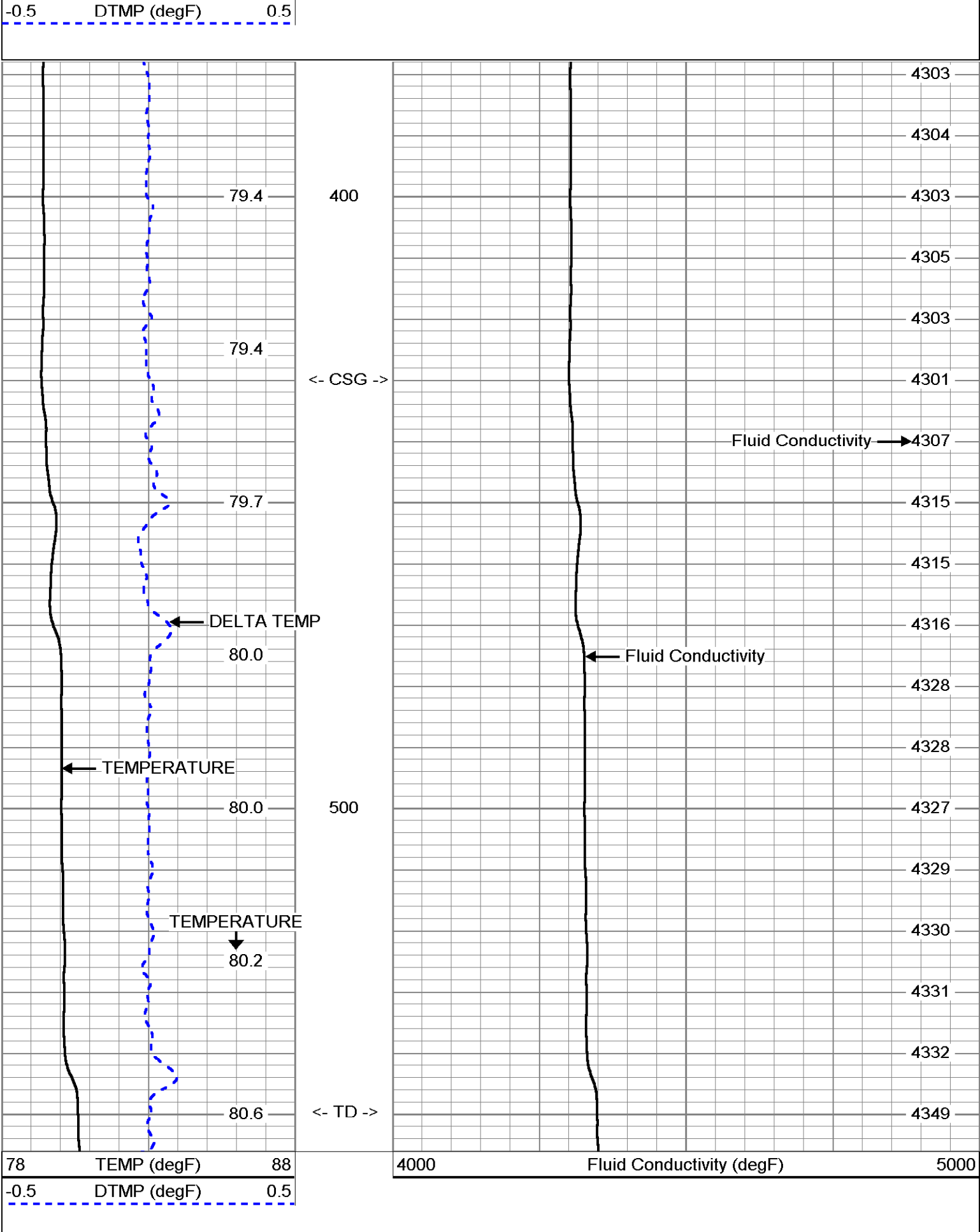
All interpretations are opinions based on inferences from electrical or other measurements and we cannot and do not guarantee the accuracy or correctness of any interpretation, and we shall not, except in the case of gross or willful negligence on our part, be liable or responsible for any loss, costs, damages, or expenses incurred or sustained by anyone resulting from any interpretation made by any of our officers, agents or employees. These interpretations are also subject to our general terms and conditions set out in our current Price Schedule.

Comments

STATIC and DYNAMIC DOWN passes were performed.  
 Cw= uS/cm @ degF (Dynamic Sample). Q =~ gpm.  
 FLUID RESISTIVITY CALIBRATION REPORT (Performed: 16-JAN-05 10:00)  
 OHM-M CPS  
 821.4 4403.32  
 1526.5 3893.21  
 3316.3 3568.53  
 TEMPERATURE CALIBRATION REPORT (Performed: 16-JAN-05 10:45)  
 DEG-F CPS  
 35.9 2349.44  
 145.9 6956.74

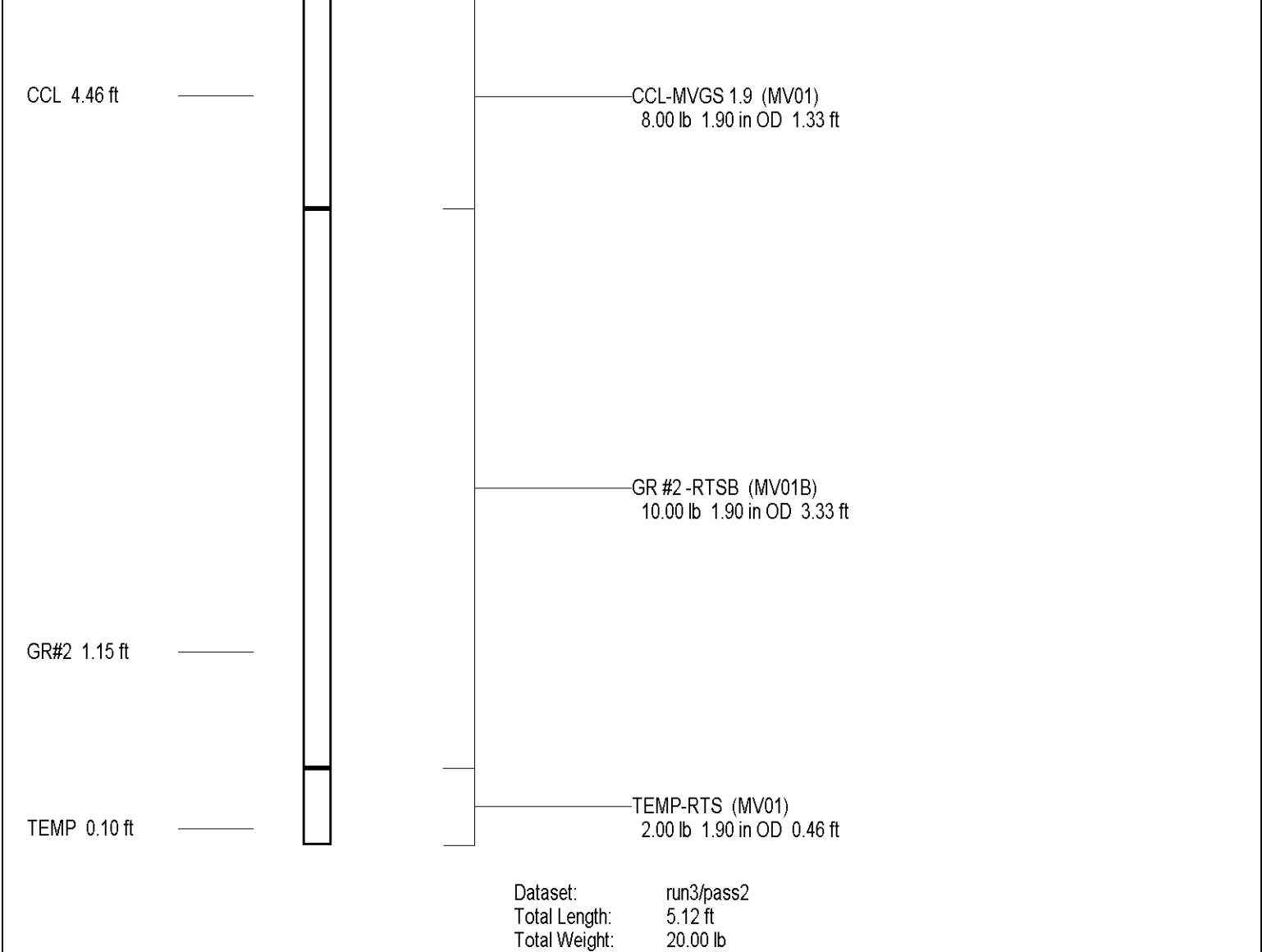
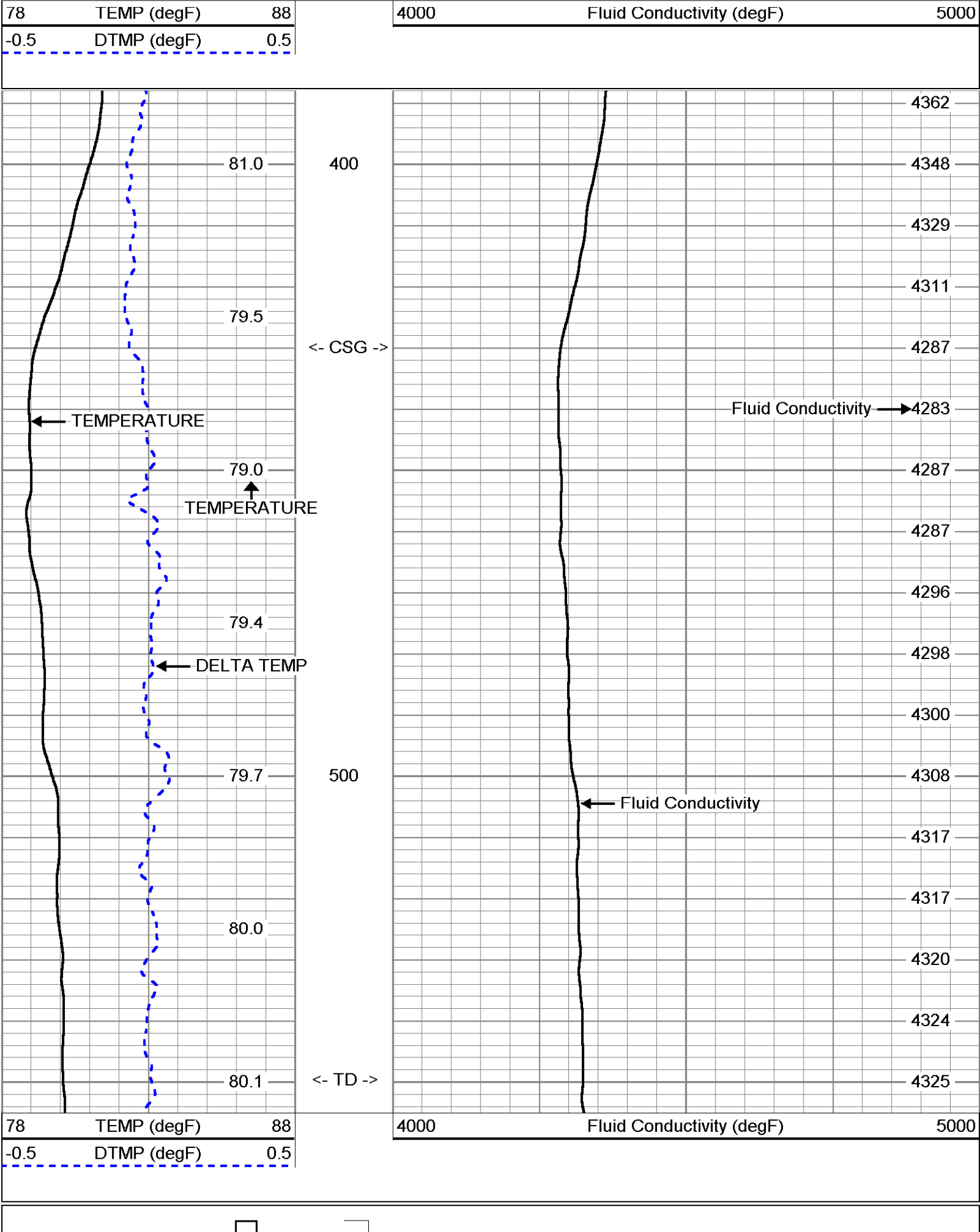
## MV Geophysical DYNAMIC FCT DOWN

Database File: ncr-116.db  
 Dataset Pathname: run3/DFCT  
 Presentation Format: FCT116  
 Dataset Creation: Tue Jan 18 13:52:05 2005  
 Charted by: Depth in Feet scaled 1:240



## MV Geophysical STATIC FCT DOWN

Database File: ncr-116.db  
 Dataset Pathname: run3/SFCT  
 Presentation Format: FCT116  
 Dataset Creation: Tue Jan 18 11:38:58 2005  
 Charted by: Depth in Feet scaled 1:240





Company	Diversified Drilling Corp.	Well	RO-116	Company	Diversified Drilling Corporation
Field	Naples	Location	Vanderbilt Road Extension North Collier Regional WTP	Well	RO-116
State/Prv	Florida	County	Collier	Field	Naples
Permanent Datum	G.L.	State/Prv	Florida	County	Collier
Log Measured From	G.L.	Location	Vanderbilt Road Extension North Collier Regional WTP	State/Prv	Florida
Drilling Measured From	G.L.	Other Services	Hazen & Sawyer, Inc.	XY/SR	
Run Number	18-JAN-2005	K.B.		DI/SP	
Depth Driller	500	D.F.		FCT	
Depth Logger	500	Elevation			
Bottom Logged Interval	548				
TOP Log Interval	444				
Bottom Log Interval	444				
TOP Log Interval	444				
Type Fluid	H2O				
Density / Viscosity	NA				
Max. Recorded Temp.	na				
Estimated Cement Top	NA				
Time Well Ready	08:00 1/18/05				
Time Logger on Bottom	11:00 1/18/05				
Equipment Number	MWGS-1				
Location	Fl Myers				
Recorded By	Fl Myers				
Witnessed By	J. Whalley (HS)				
Recorded By	Rosasco (UDCI)				
Witnessed By					
Run Number	ONE	Boothle Record		Size	Weight
ONE	23"	TO	150'	From	To
TWO	14.75"	TO	435'	From	To
THREE	4.50"	TO	550'	From	To
Size	24"	TO	150'	From	To
Surface String	16 FRP	TO	150'	From	To
Production String	16 FRP	TO	150'	From	To
Flowmeter String	16 FRP	TO	150'	From	To
Log Interval	200	TO	150'	From	To
P.O. #	20050111	TO	150'	From	To
JOB No.		TO	150'	From	To
		TO	150'	From	To

<<< Fold Here >>>

All interpretations are opinions based on inferences from electrical or other measurements and we cannot and do not guarantee the accuracy or correctness of any interpretation, and we shall not, except in the case of gross or willful negligence on our part, be liable or responsible for any loss, costs, damages, or expenses incurred or sustained by anyone resulting from any interpretation made by any of our officers, agents or employees. These interpretations are also subject to our general terms and conditions set out in our current Price Schedule.

Comments

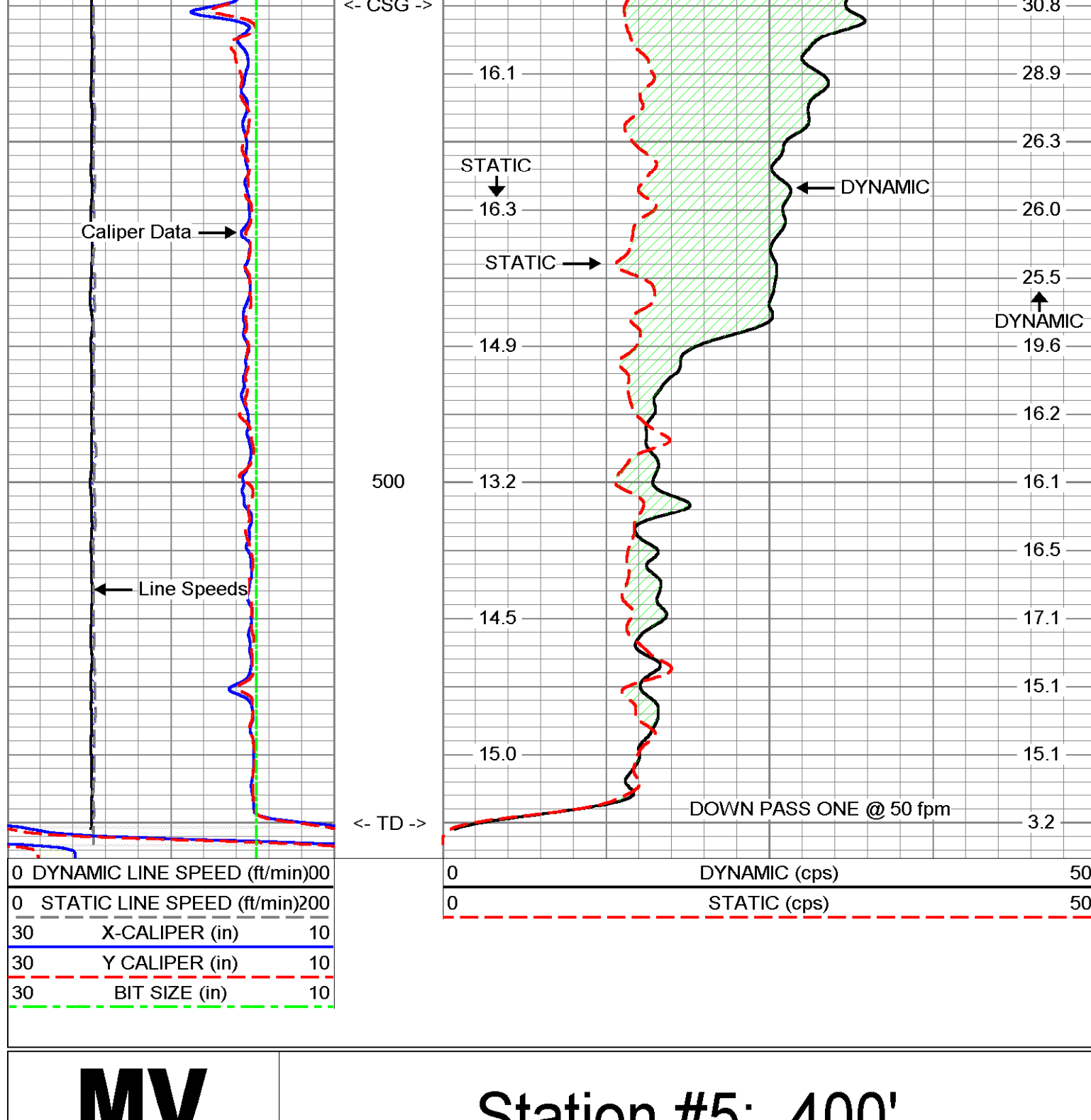
STATIC and DYNAMIC down passes were made at 50 fpm.

5 Station was performed.

Q ≈ 453 gpm

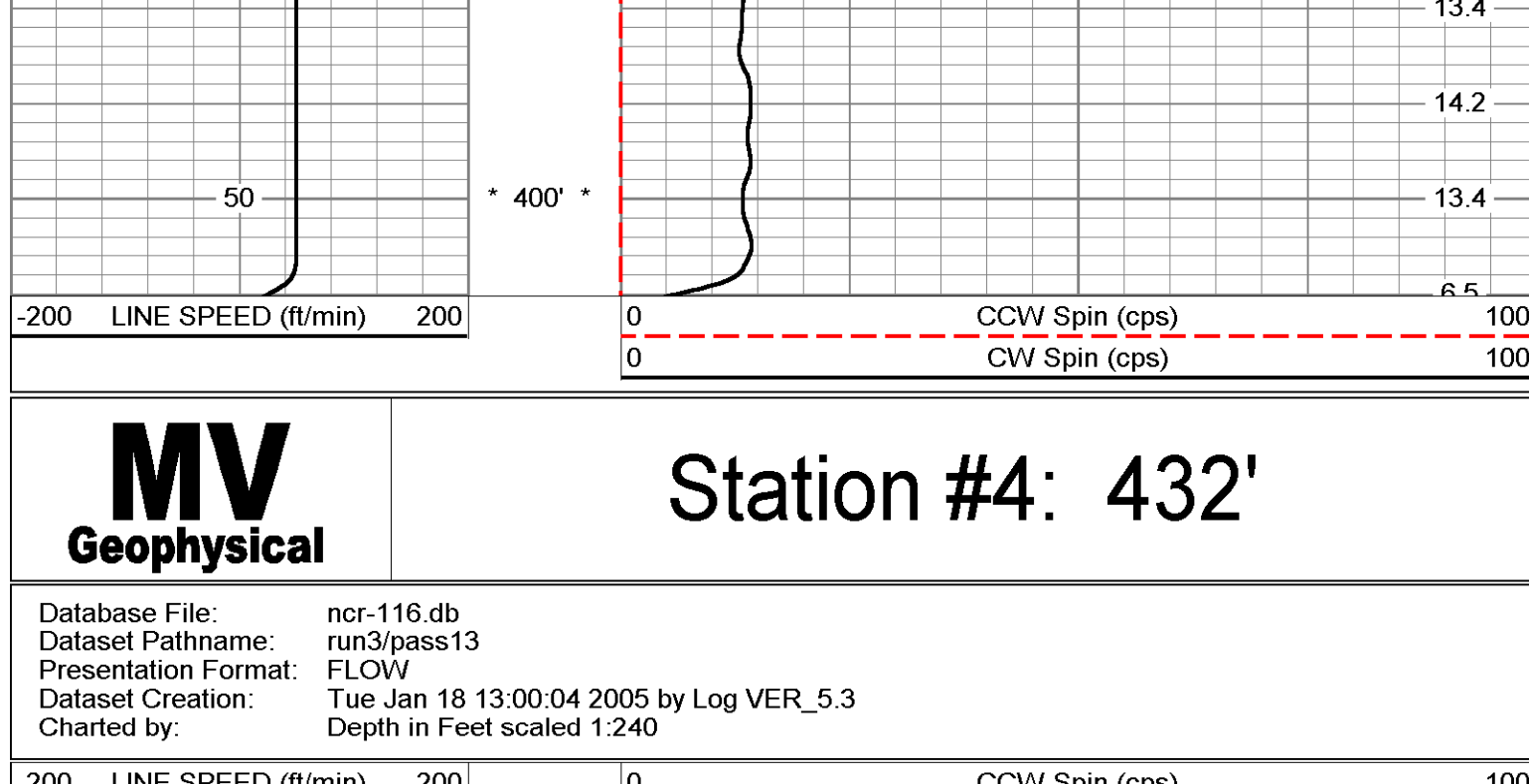
**MV Geophysical** S/D DOWN @ 50 fpm

Database File: ncr-116.db  
 Dataset Pathname: run3/SD50  
 Presentation Format: Q-50  
 Dataset Creation: Tue Jan 18 12:30:28 2005  
 Charted by: Depth in Feet scaled 1:240



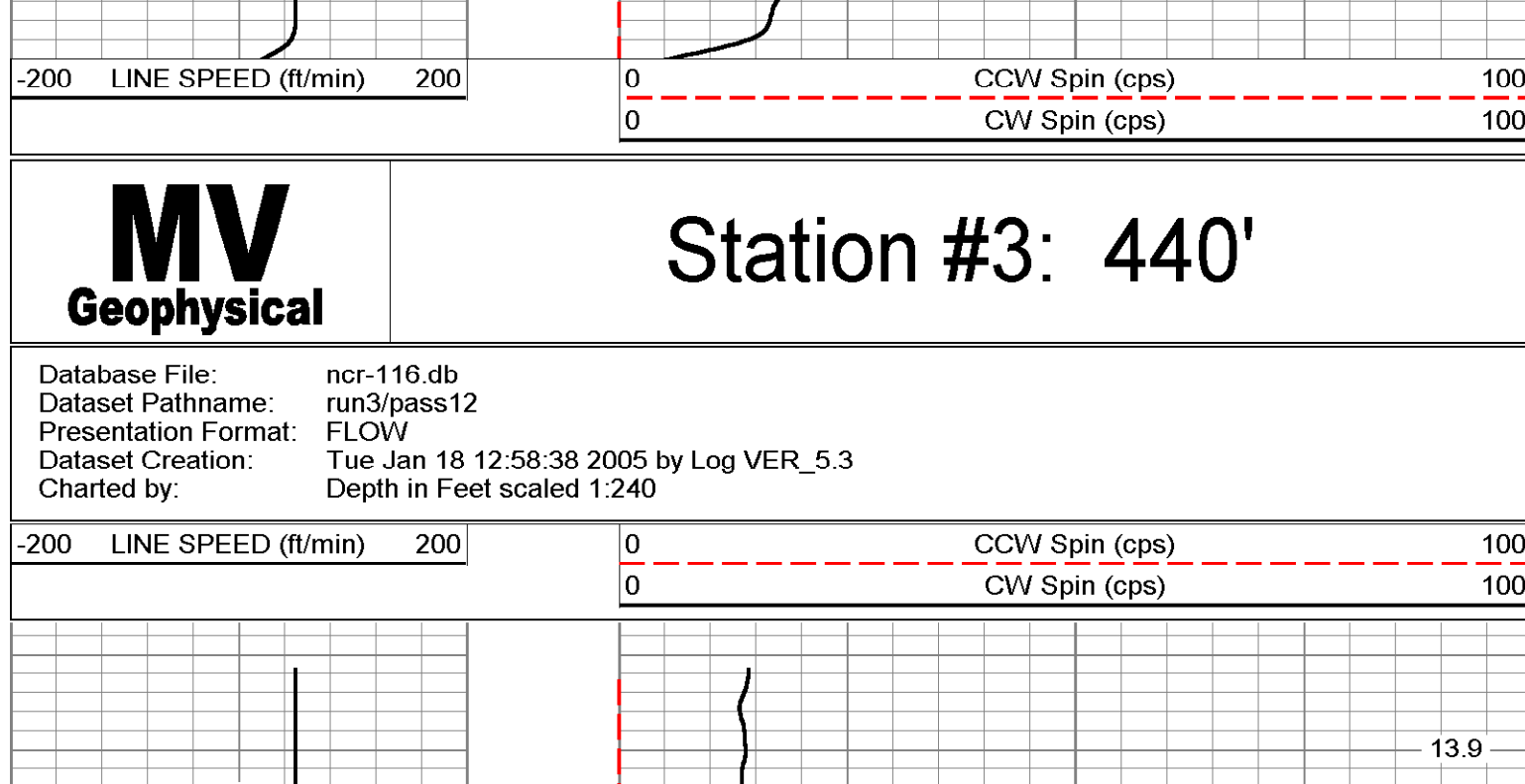
**MV Geophysical** Station #5: 400'

Database File: ncr-116.db  
 Dataset Pathname: run3/pass14  
 Presentation Format: FLOW  
 Dataset Creation: Tue Jan 18 13:01:38 2005 by Log VER\_5.3  
 Charted by: Depth in Feet scaled 1:240



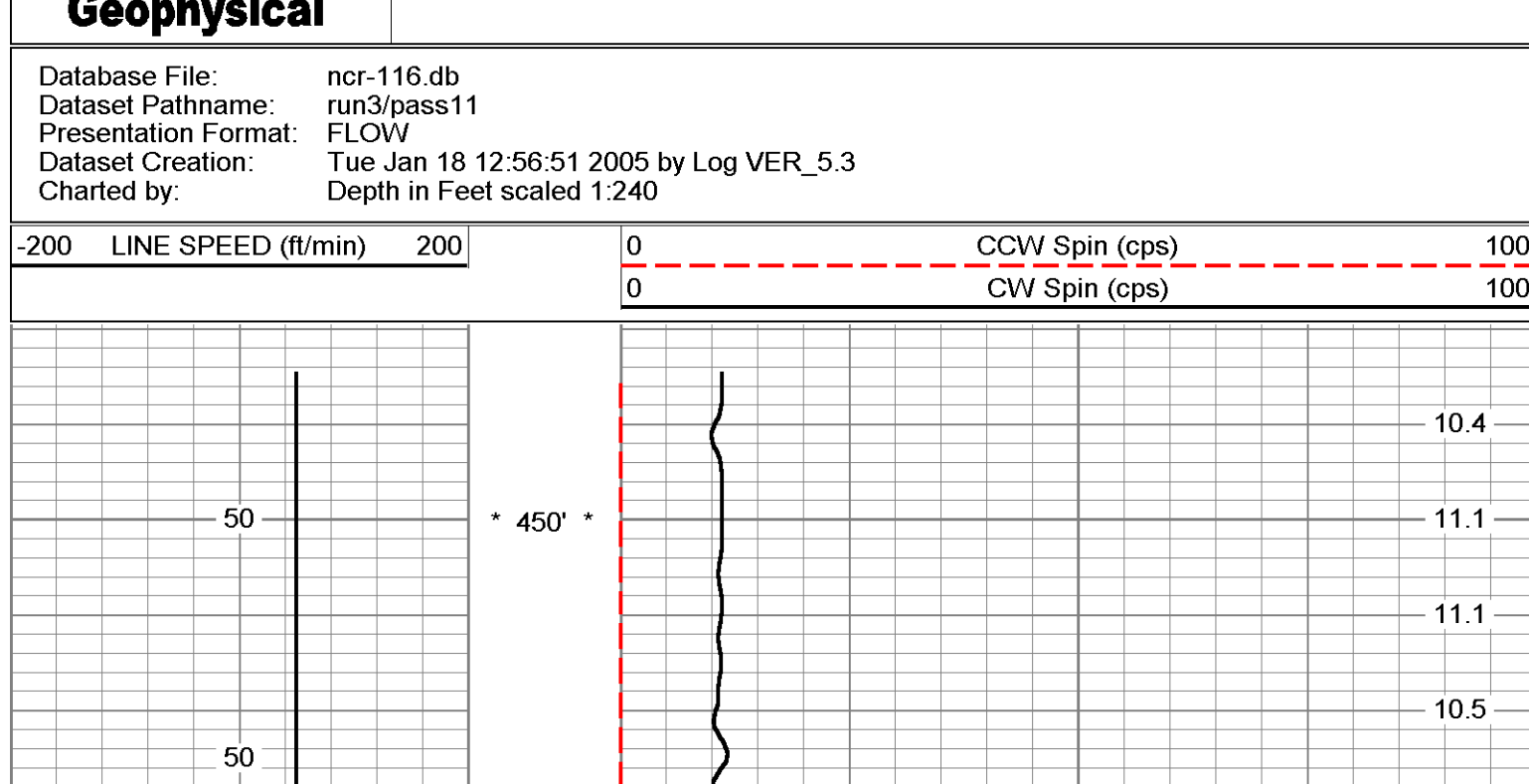
**MV Geophysical** Station #4: 432'

Database File: ncr-116.db  
 Dataset Pathname: run3/pass13  
 Presentation Format: FLOW  
 Dataset Creation: Tue Jan 18 13:00:04 2005 by Log VER\_5.3  
 Charted by: Depth in Feet scaled 1:240



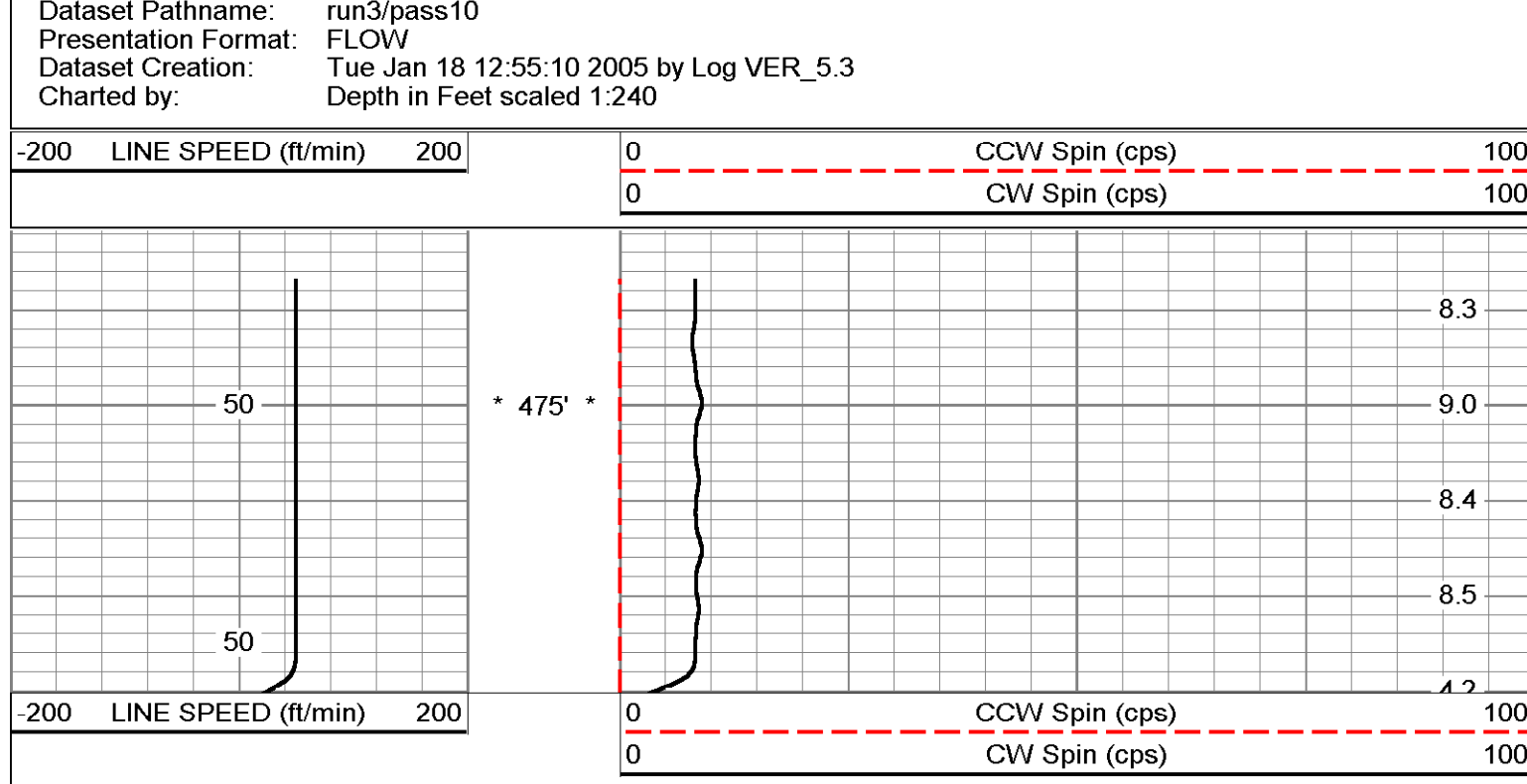
**MV Geophysical** Station #3: 440'

Database File: ncr-116.db  
 Dataset Pathname: run3/pass12  
 Presentation Format: FLOW  
 Dataset Creation: Tue Jan 18 12:58:38 2005 by Log VER\_5.3  
 Charted by: Depth in Feet scaled 1:240



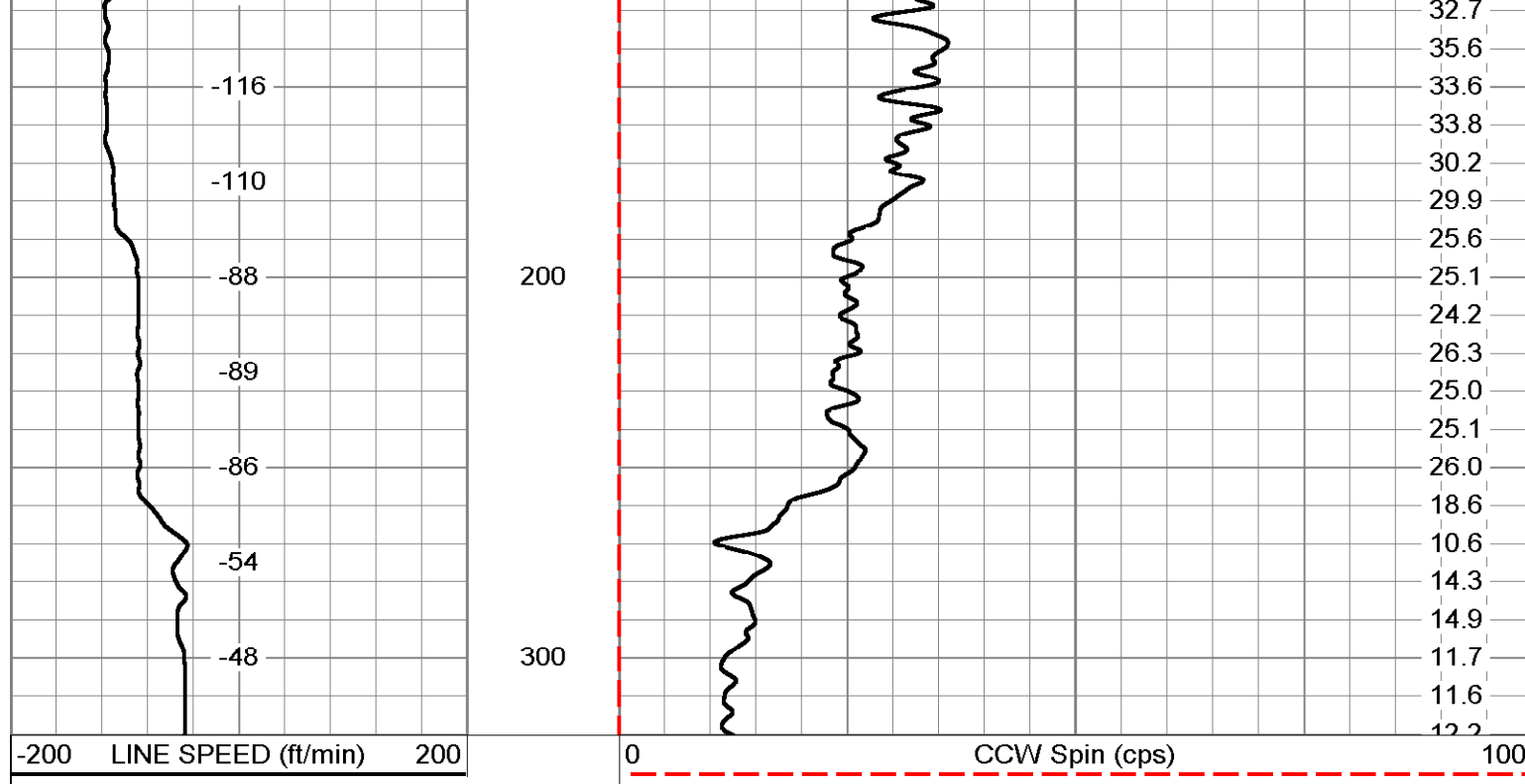
**MV Geophysical** Station #2: 450'

Database File: ncr-116.db  
 Dataset Pathname: run3/pass11  
 Presentation Format: FLOW  
 Dataset Creation: Tue Jan 18 12:56:51 2005 by Log VER\_5.3  
 Charted by: Depth in Feet scaled 1:240



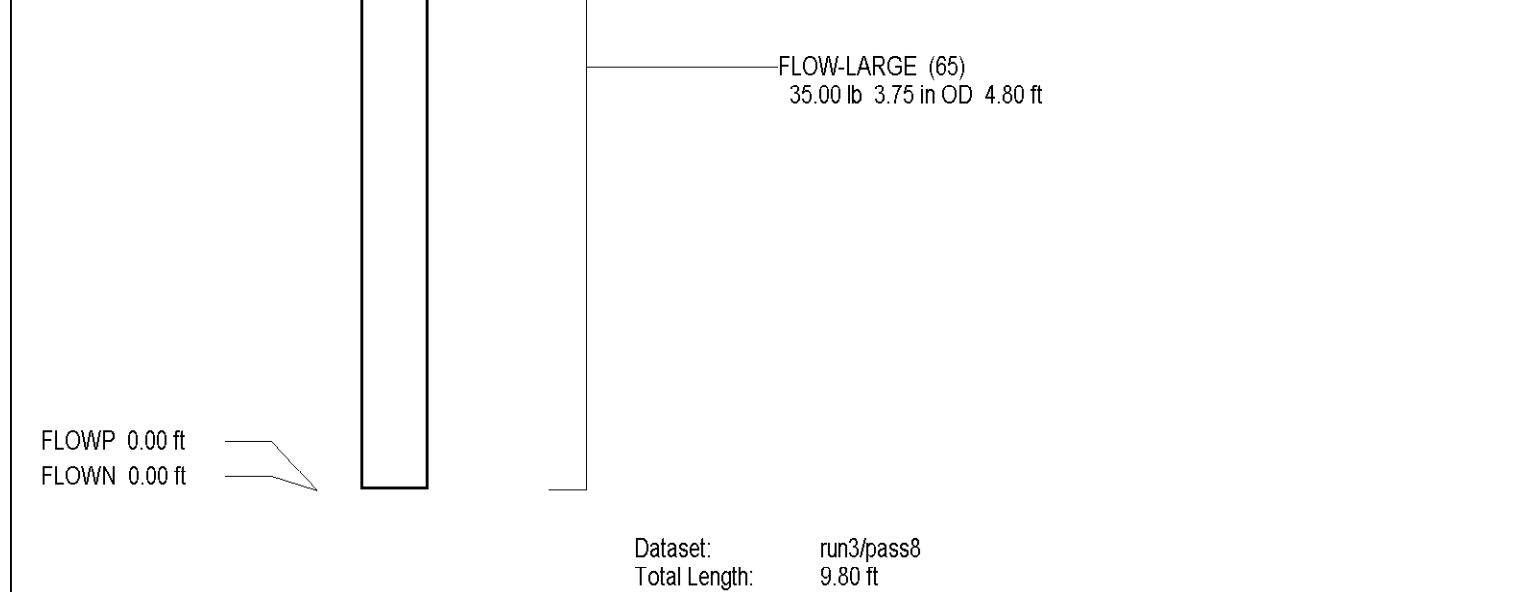
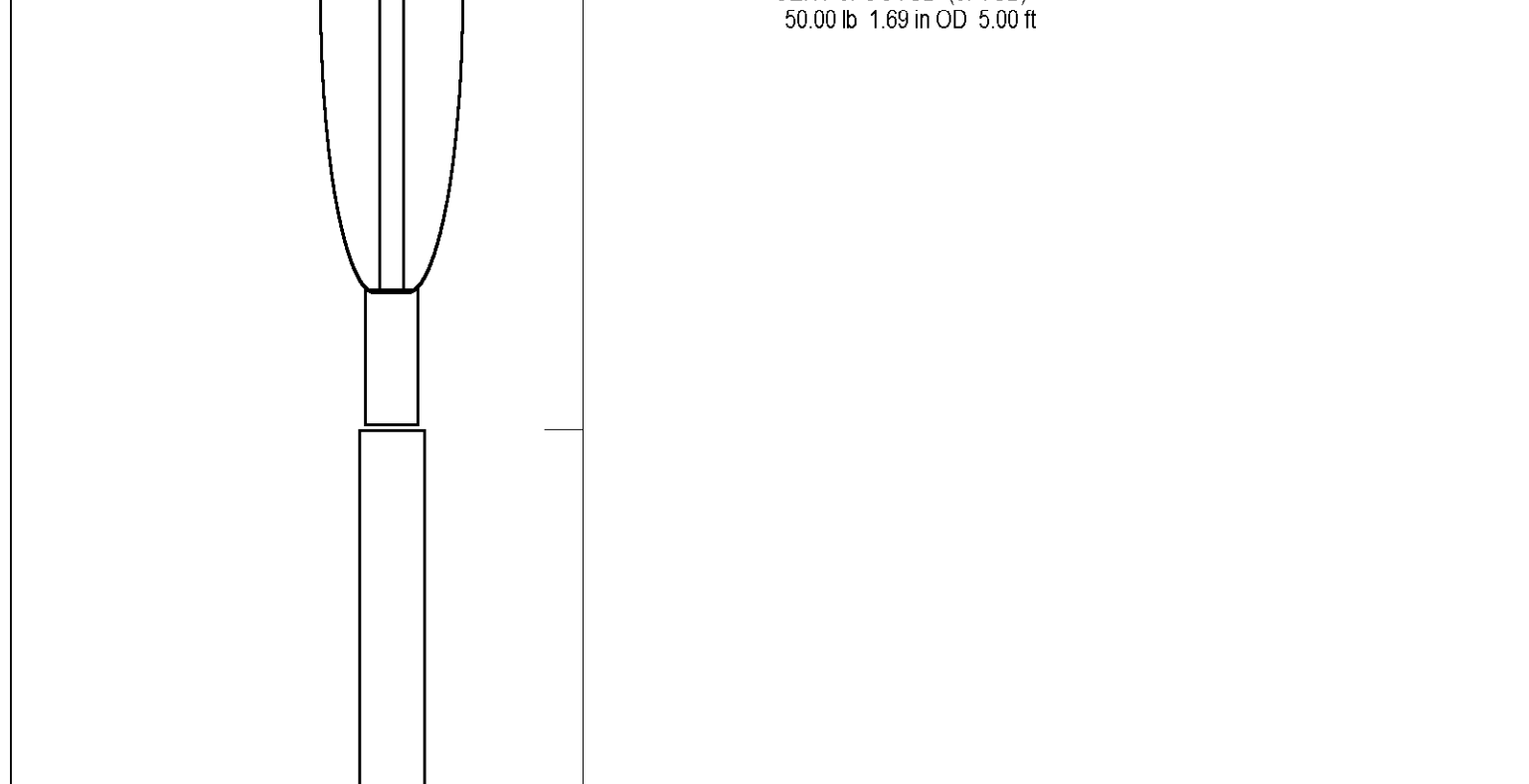
**MV Geophysical** Station #1: 475'

Database File: ncr-116.db  
 Dataset Pathname: run3/pass10  
 Presentation Format: FLOW  
 Dataset Creation: Tue Jan 18 12:55:10 2005 by Log VER\_5.3  
 Charted by: Depth in Feet scaled 1:240



**MV Geophysical** Q Calibration Down

Database File: ncr-116.db  
 Dataset Pathname: run3/pass8  
 Presentation Format: FLOW  
 Dataset Creation: Tue Jan 18 11:04:28 2005 by Log VER\_5.3  
 Charted by: Depth in Feet scaled 1:600





**X-Y CALIPER  
GAMMA RAY  
LOG**

**Company** Diversified Drilling Corp.  
**Well** RO-116  
**Field** Naples  
**County** Collier  
**Location** Vanderbilt Road Extension  
North Collier Regional WTP

**State/Prv** Florida  
**Permanent Datum** G.L.  
**Log Measured From** G.L.  
**Elevation** K.B. G.L.

**Date** 18-JAN-2005  
**Run Number** THREE  
**Drill Log** 5507  
**Bottom Logged Interval** SURFACE  
**Open Hole Size** 14.75"  
**Type of Measure** N/O  
**Max. Recorded Temp.** NA  
**Estimated Cement Top** NA

**Time Log/Gr to Bottom** 09:00:11/18:05  
**Equipment Number** F10533  
**Recorded By** S. Miller  
**Witnessed By** J. Whinnery (HS)

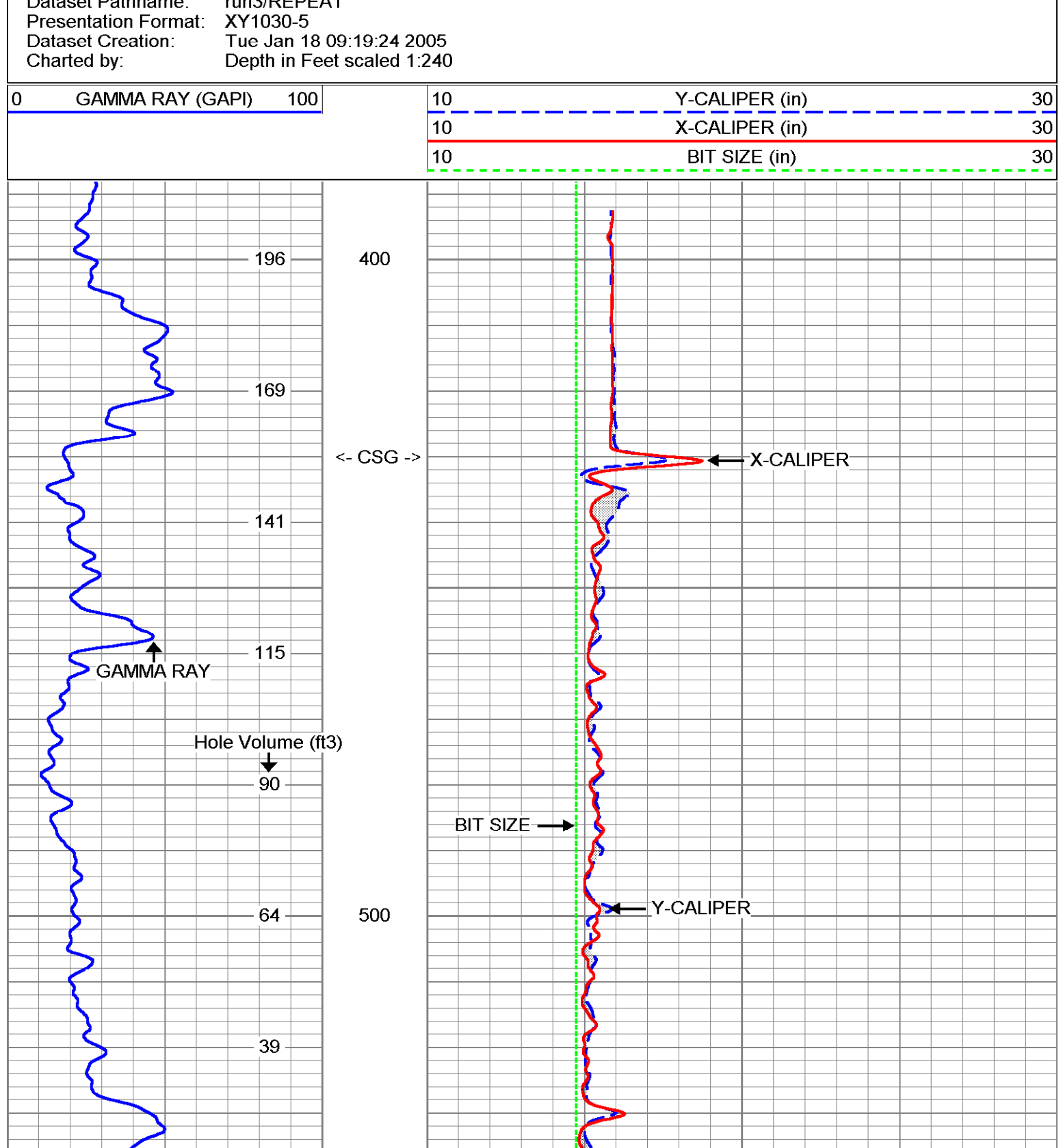
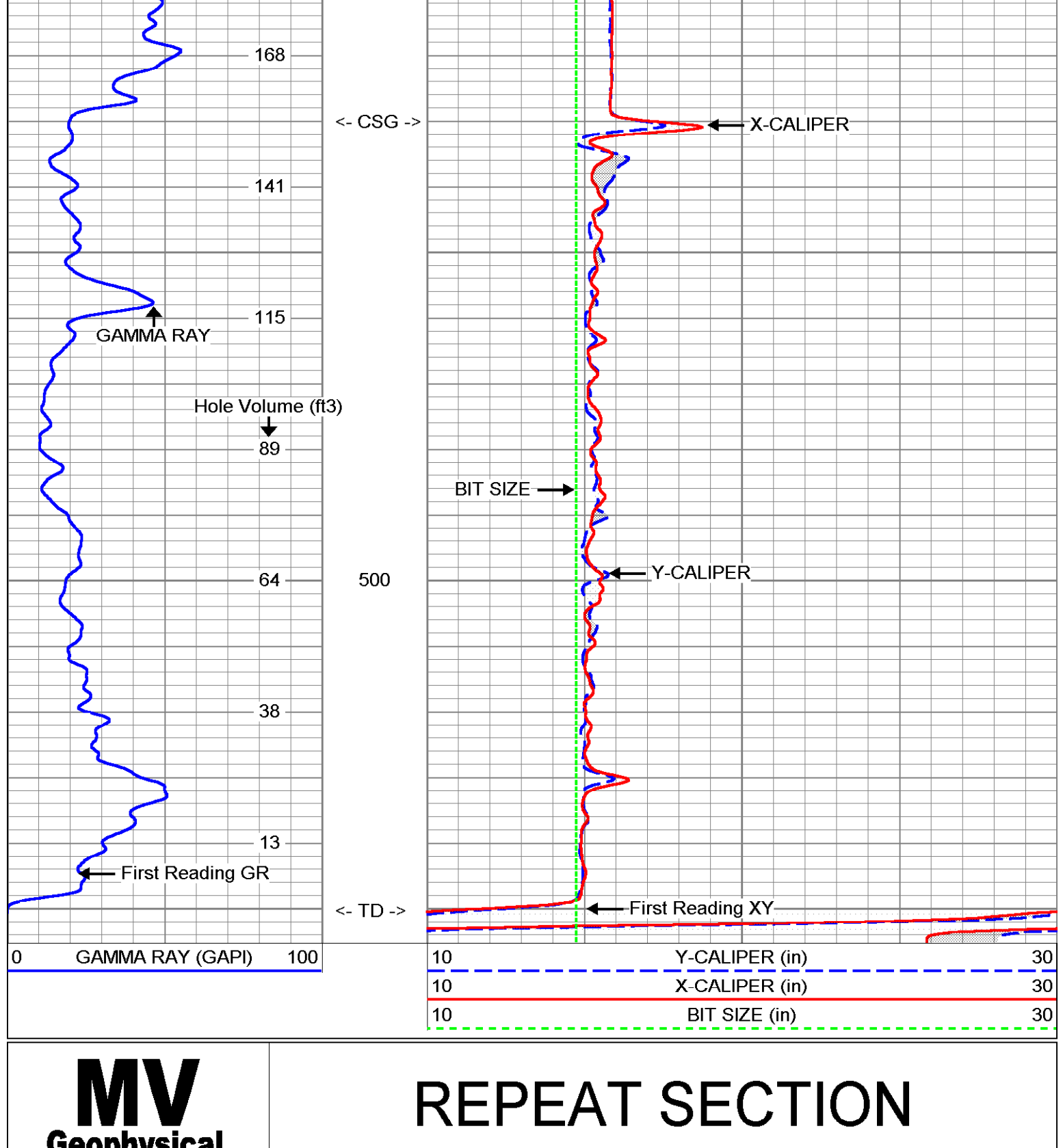
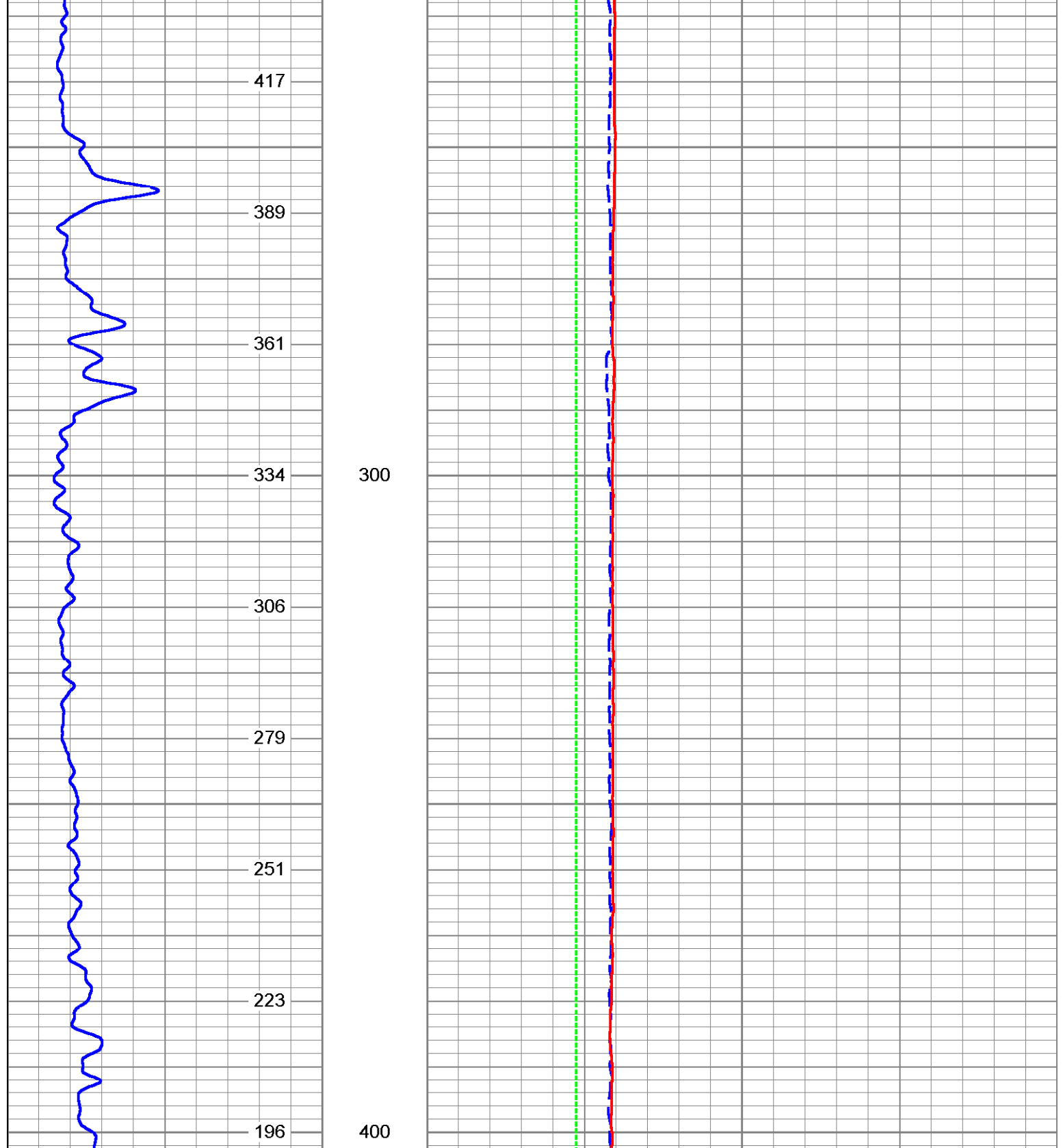
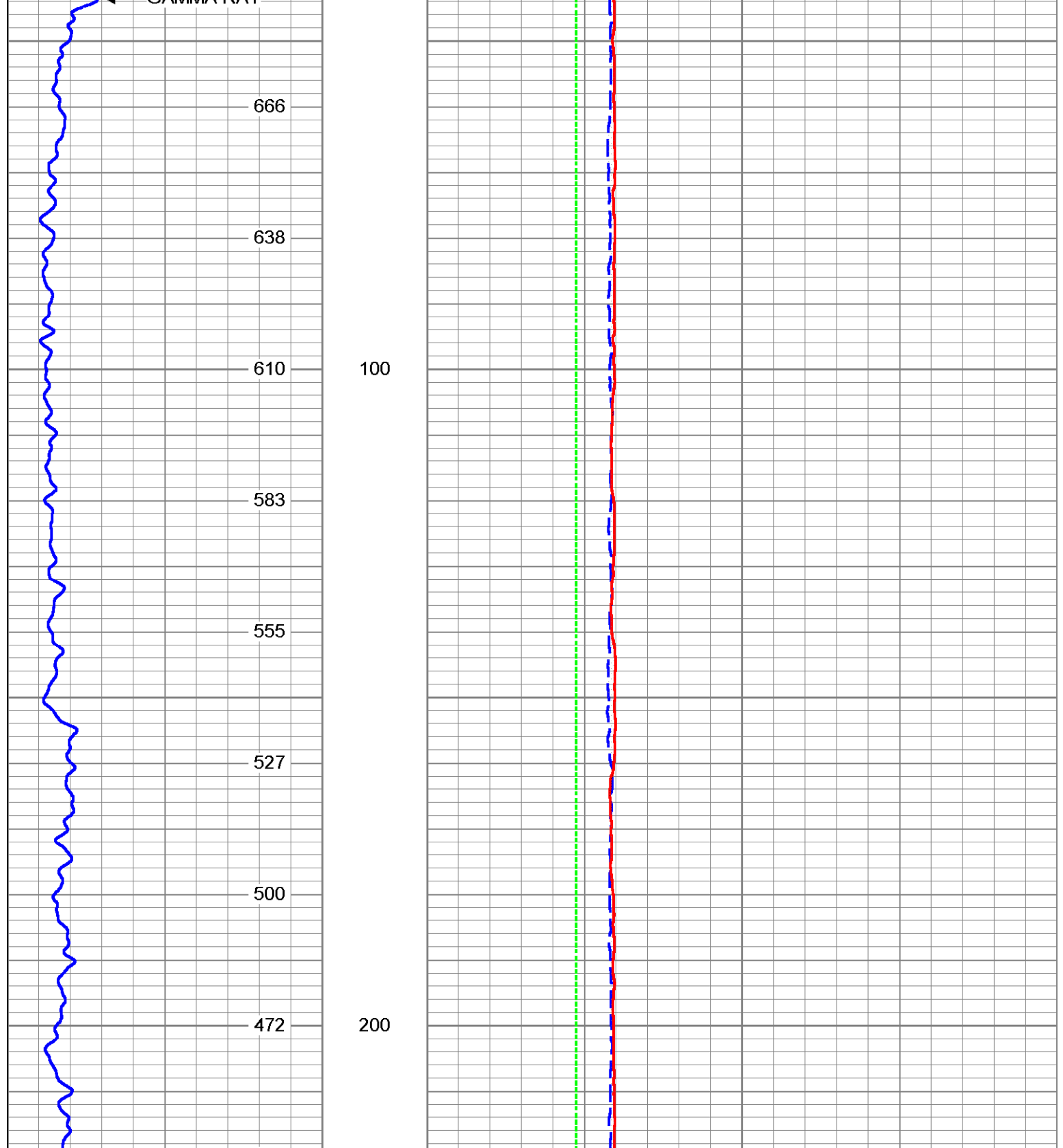
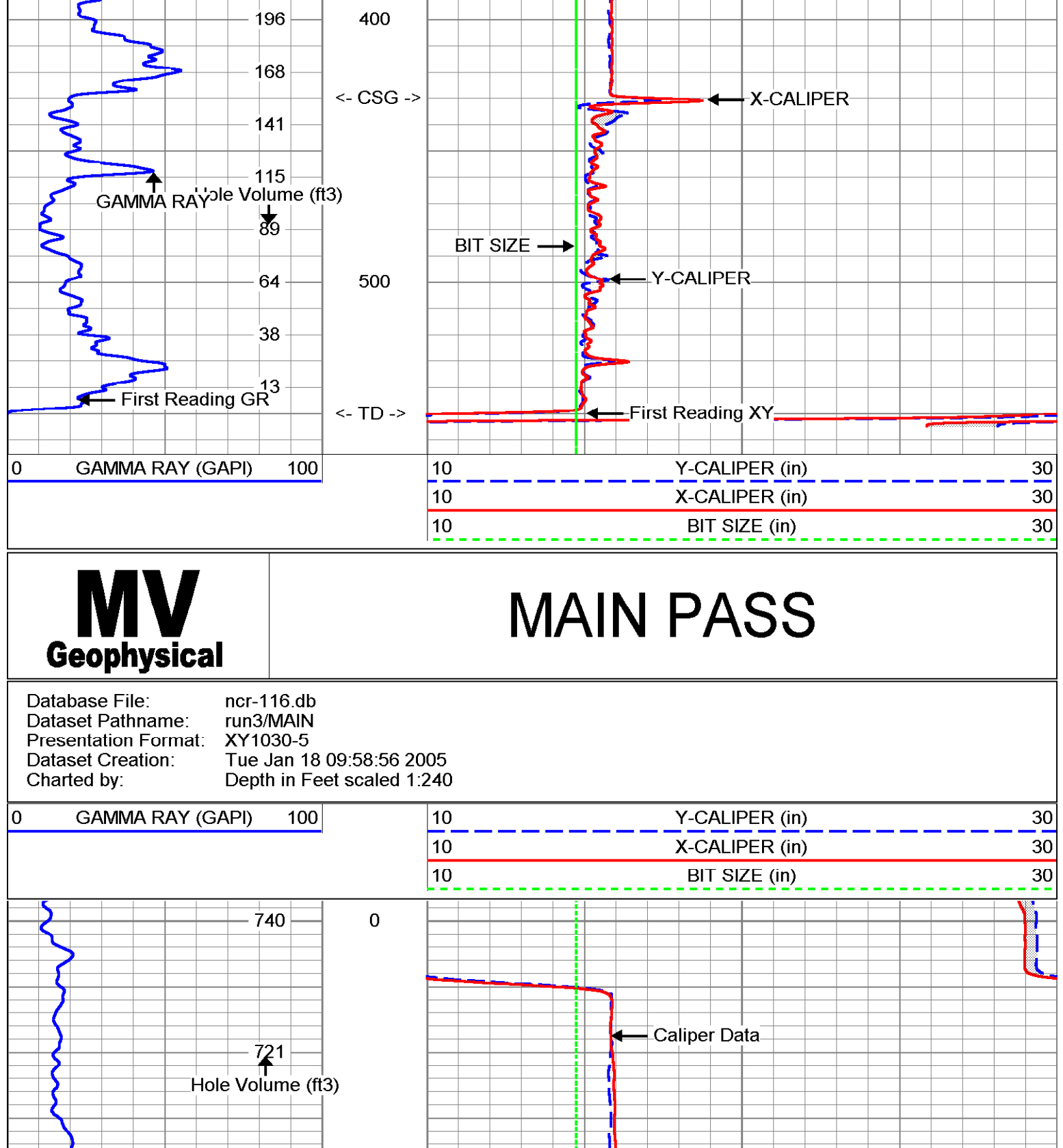
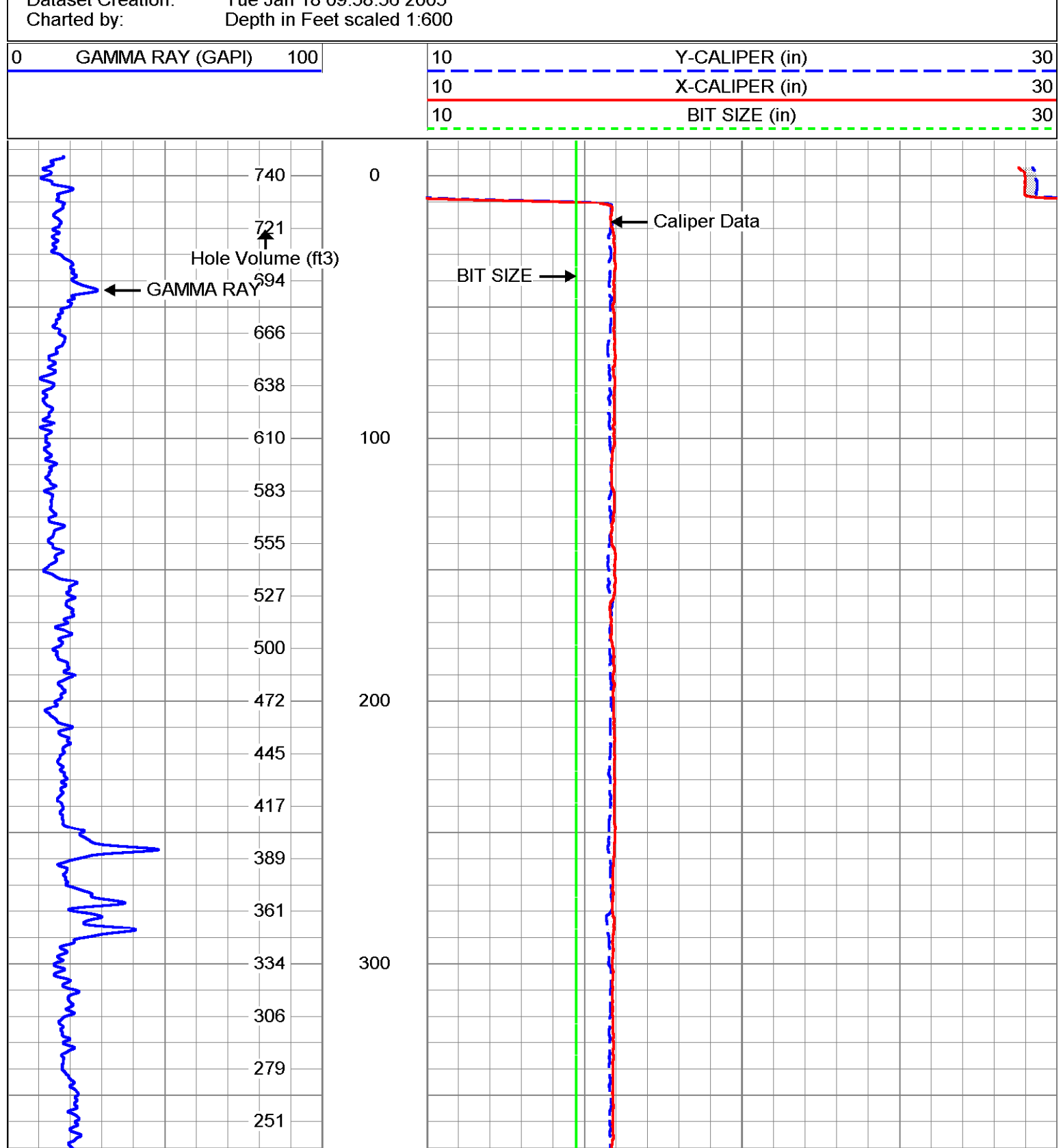
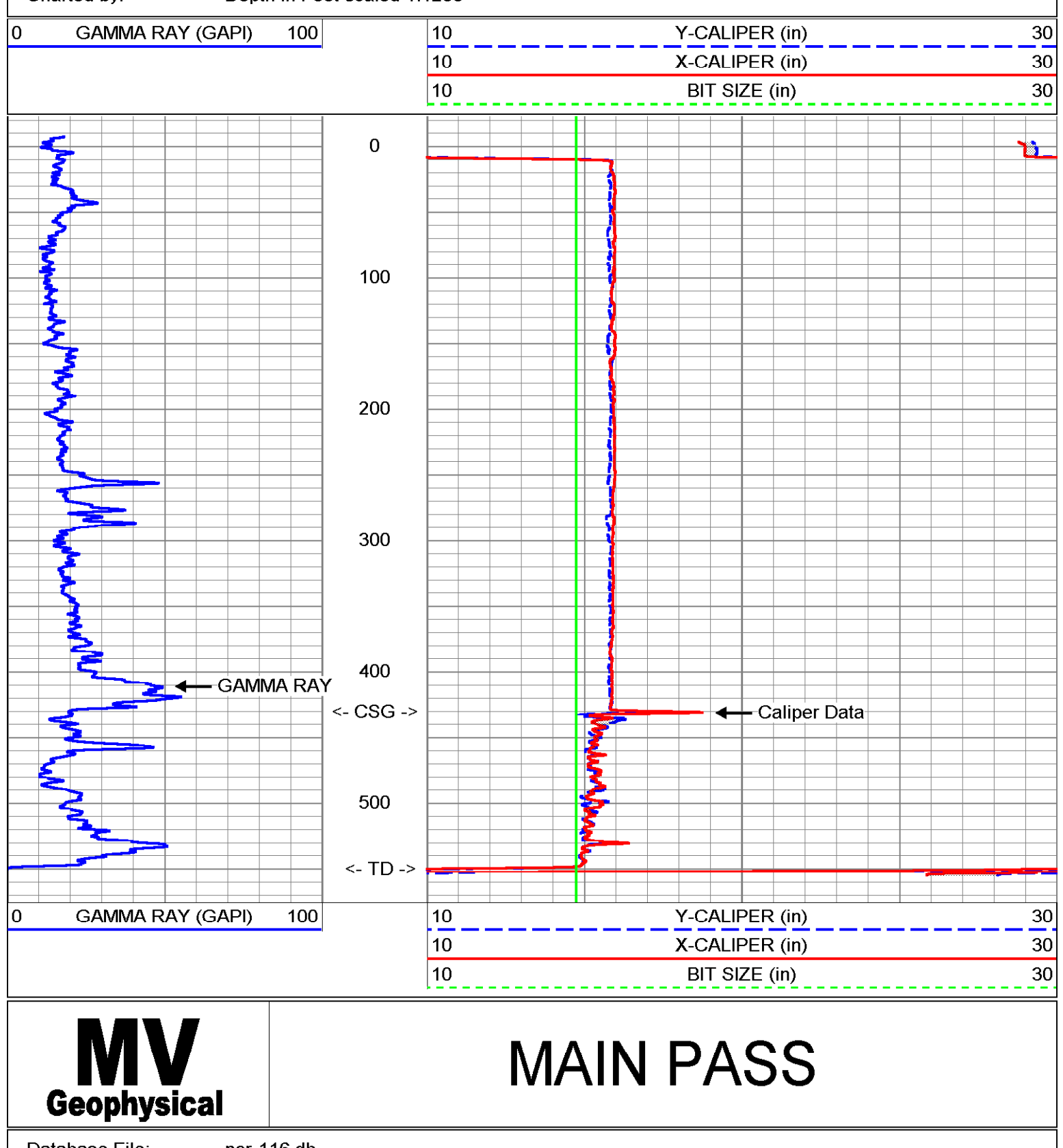
**Revised (DJC)**  
**Revised (DUC)**  
**Revised (DSC)**

**Run Length** 320'  
**TIME** 03:23  
**THREE** 14.75"  
**THREE** 430'  
**THREE** 650'

**Bottom Record** 15'  
**Surface String** 1597'  
**Production String** 1597'  
**Production String** 1597'  
**Production String** 1597'  
**Production String** 1597'

All interpretations are opinions based on inferences from electrical or other measurements and we cannot and do not guarantee the accuracy or correctness of any interpretation, and we shall not, except in the case of gross or willful negligence on our part, be liable or responsible for any loss, costs, damages, or expenses incurred or sustained by anyone resulting from any interpretation made by any of our officers, agents or employees. These interpretations are also subject to our general terms and conditions set out in our current Price Schedule.

X-Y Caliper Arm Extensions: 33"

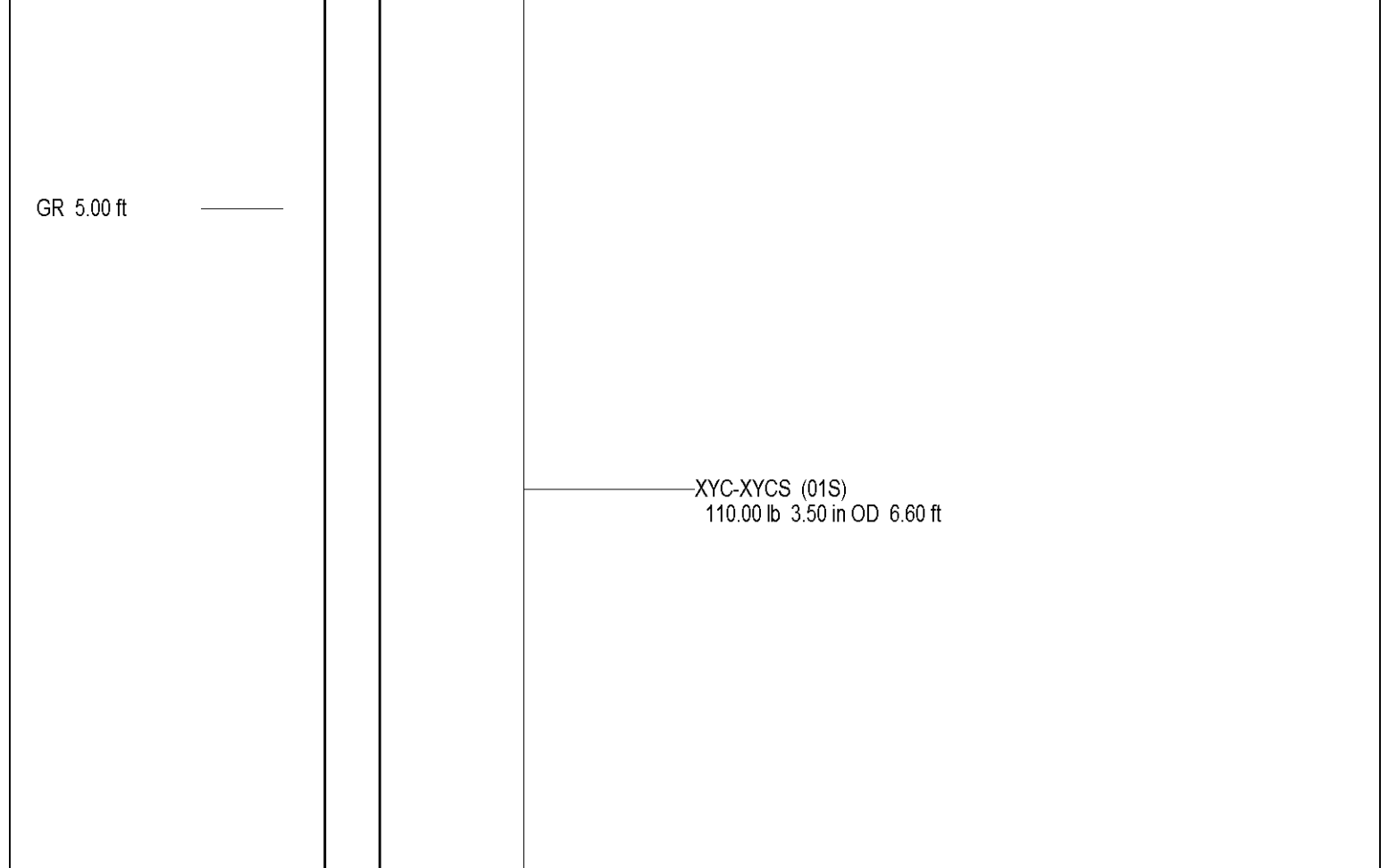


**XY Caliper Calibration Report**

Serial Number:	01S	
Tool Model:	XYCS	
Performed:	Tue Jan 18 09:09:56 2005	
Small Ring:	14.75	in
Large Ring:	33	in
	X Caliper	Y Caliper
Reading with Small Ring:	640.4	627.4
Reading with Large Ring:	1046.21	1059
Gain:	0.0449718	0.0422845
Offset:	-14.0499	-11.7793
	cps	cps

**Gamma Ray Calibration Report**

Serial Number:	01	
Tool Model:	GROH	
Performed:	Tue Jan 18 09:06:24 2005	
Calibrator Value:	120	GAPI
Background Reading:	10.715	cps
Calibrator Reading:	126.475	cps
Sensitivity:	1.03663	GAPI/cps



Dataset: run3/pass3  
Total Length: 9.35 ft  
Total Weight: 150.00 lb  
O.D.: 3.50 in