

Company: Diversified Drilling Corp.
Well: RO-118
Field: Naples
County: Collier
State/Prv: Florida

Location: Vanderbilt Road Extension
North Collier Regional WTP
Hazen & Sawyer, Inc.

Other Services:
AY/GK
FCT
FLOW

Permanent Datum: G.L.
Log Measured From: G.L.
Drilling Measured From: G.L.

Date: 21-FEB-2006
Run Number: THREE
Depth Driller: 592
Bottom Logger: 592
Bottom Logged Interval: 485'
Top Log Interval: 485'
Open Hole Size: 14.75"
Type Fluid: 1420
Density / Viscosity: 9.8141
Max. Record Temp.: 118
Estimated cement top: 1145-2/21/2006

Time Used: 13:00:33
Time Used: 13:00:33
Equipment Number: MNGS2
Location: Ft. Myers
Recorded By: S. Miller
Witnessed By: J. Whisalley (HS)

Bohemia Record:
Run Number: Bit From To Size Weight Tubing Record From To
ONE 32" SURFACE 147' 462' 140'
TWO 23" SURFACE 147' 462' 140'
THREE 14.75" 469' 592'

Casing Record:
Casing String: 16" TRP
Production String: 485'
Liner: 2006042
P.O.#: 263999
Job No.: 6403
FIELD PRINT

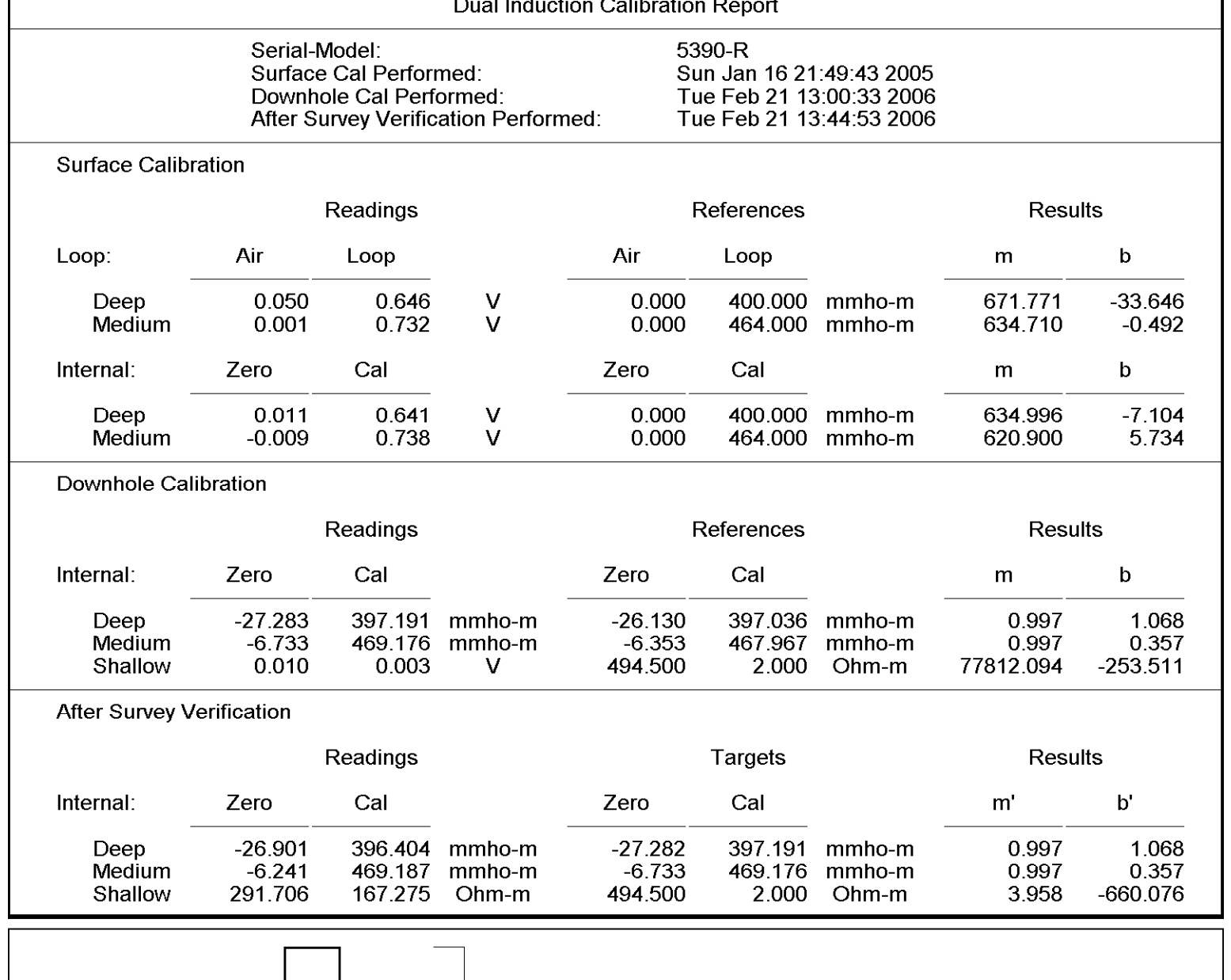
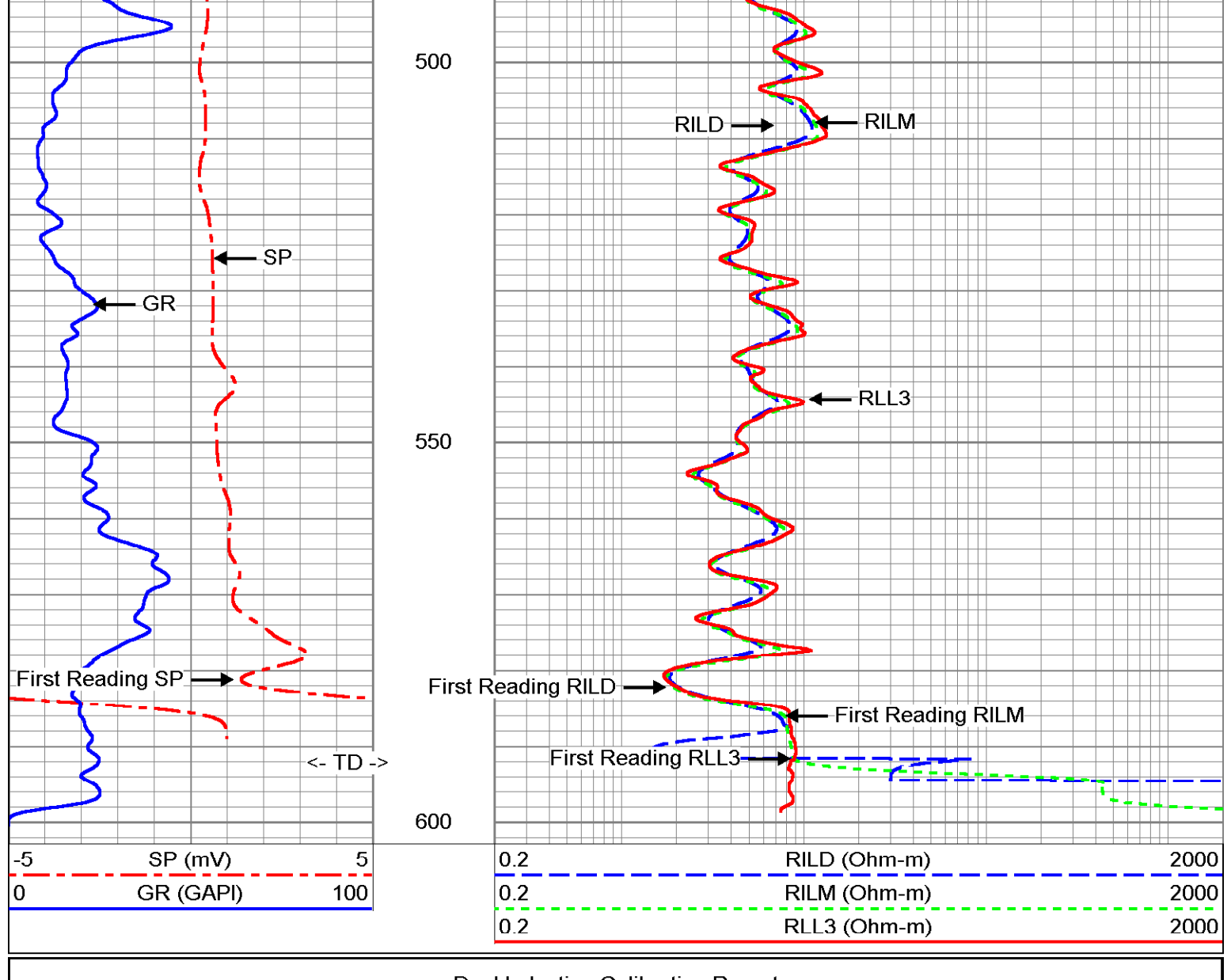
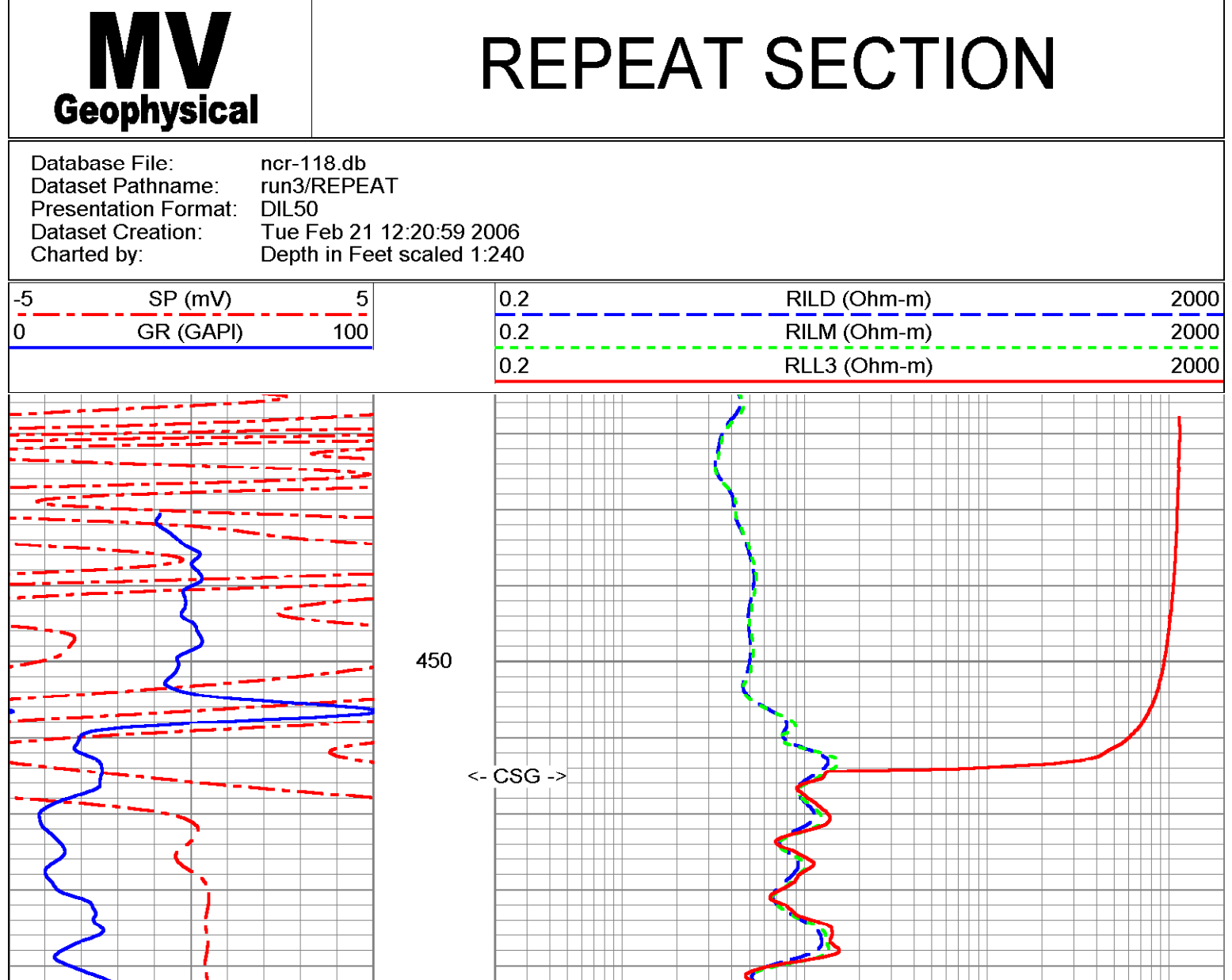
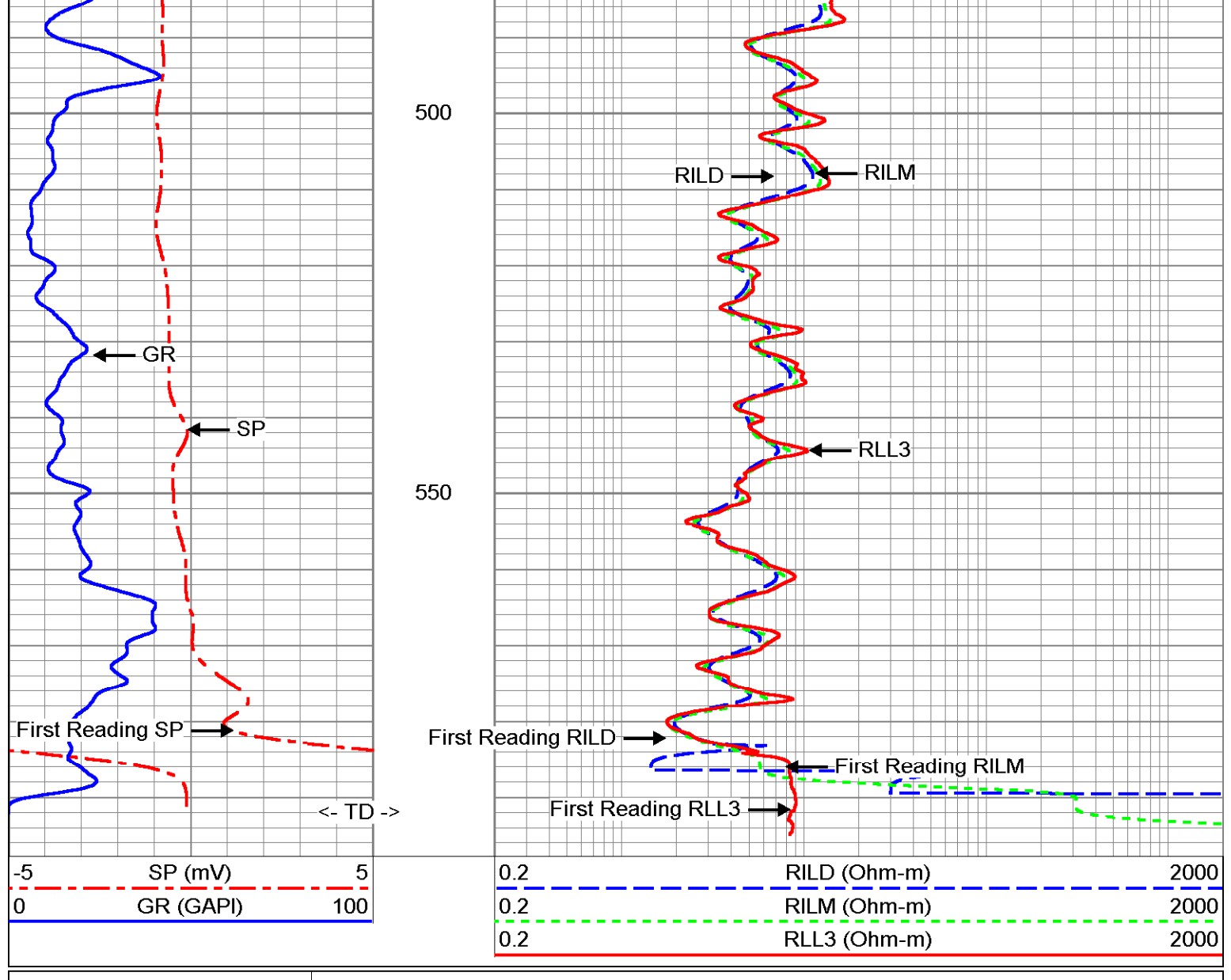
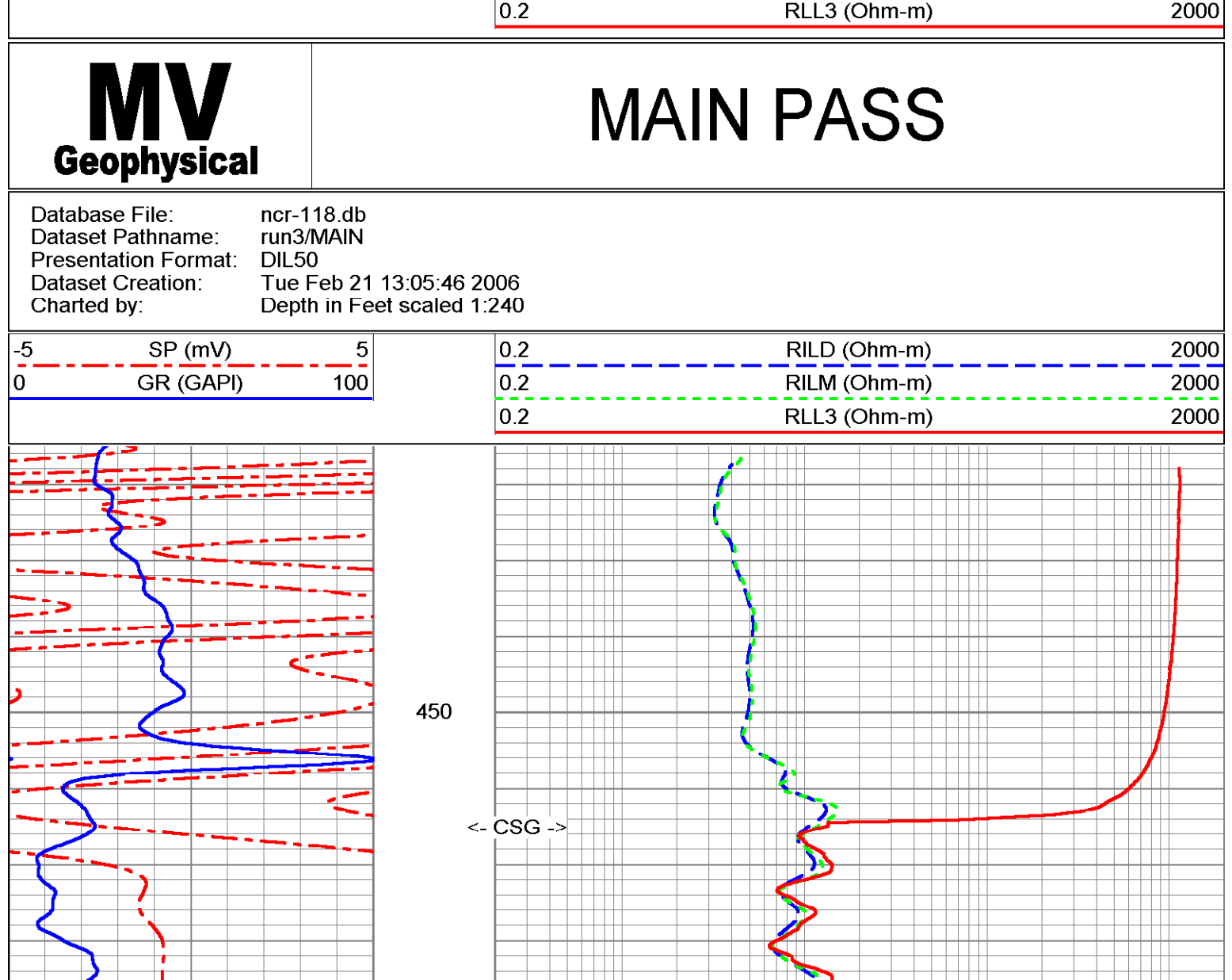
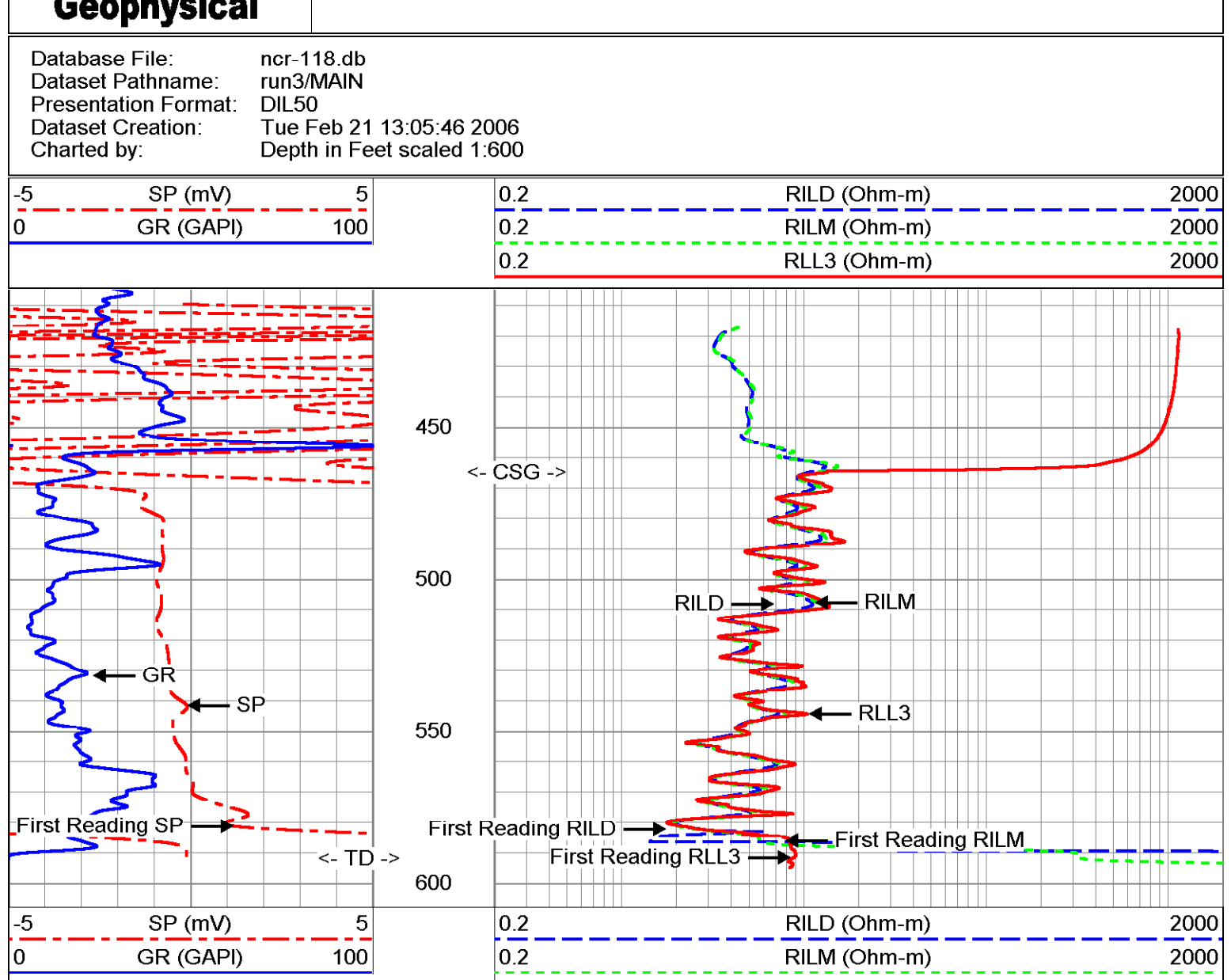
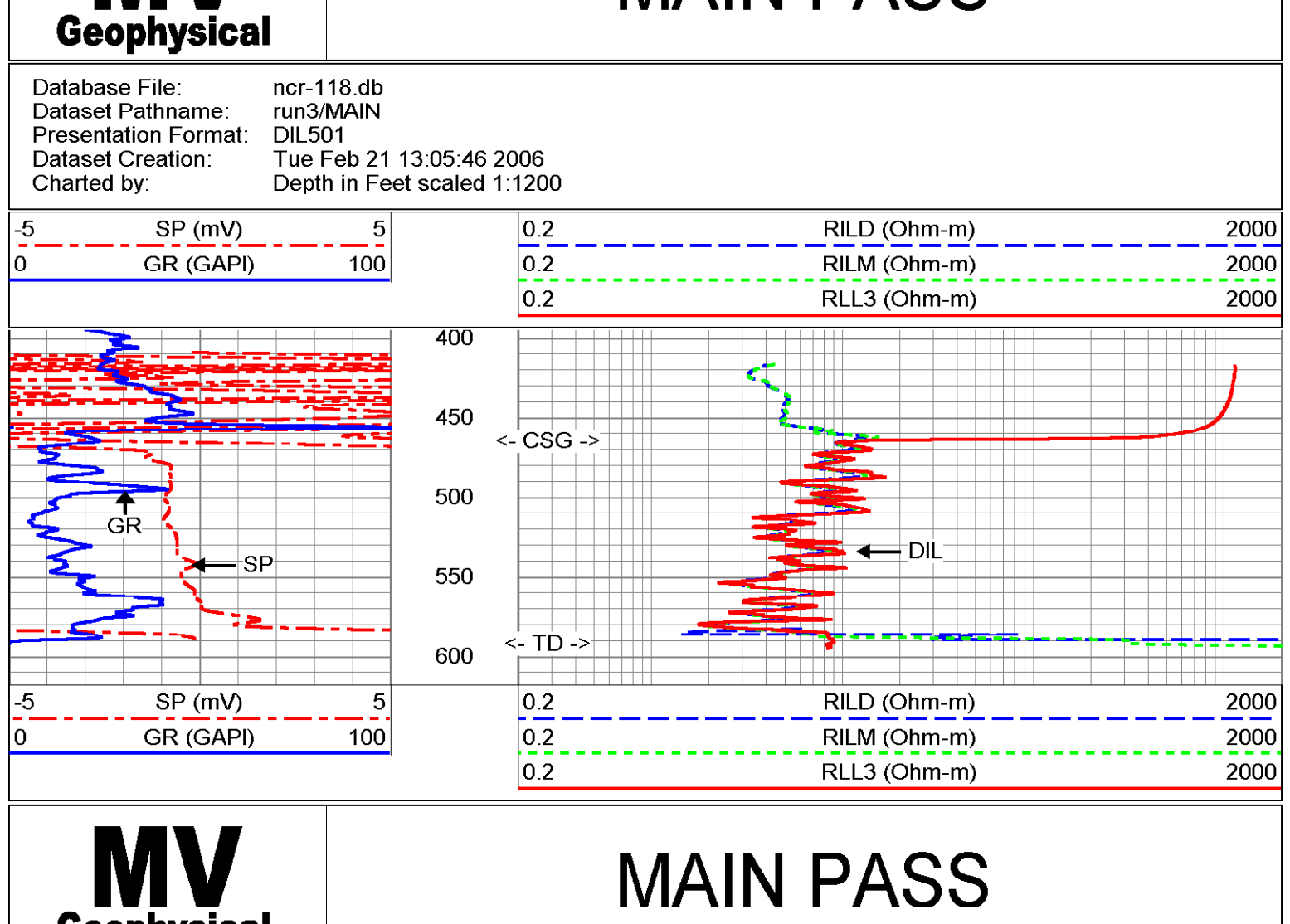
Company: Diversified Drilling Corp.
Well: RO-118
Field: Naples
County: Collier
State/Prv: Florida

<<< Fold Here >>>

All Interpretations are opinions based on inferences from electrical or other measurements and we cannot and do not guarantee the accuracy or correctness of any interpretation, and we shall not, except in the case of gross or willful negligence on our part, be liable or responsible for any loss, costs, damages, or expenses incurred or sustained by anyone resulting from any interpretation made by any of our officers, agents or employees. These interpretations are also subject to our general terms and conditions set out in our current Price Schedule.

Comments

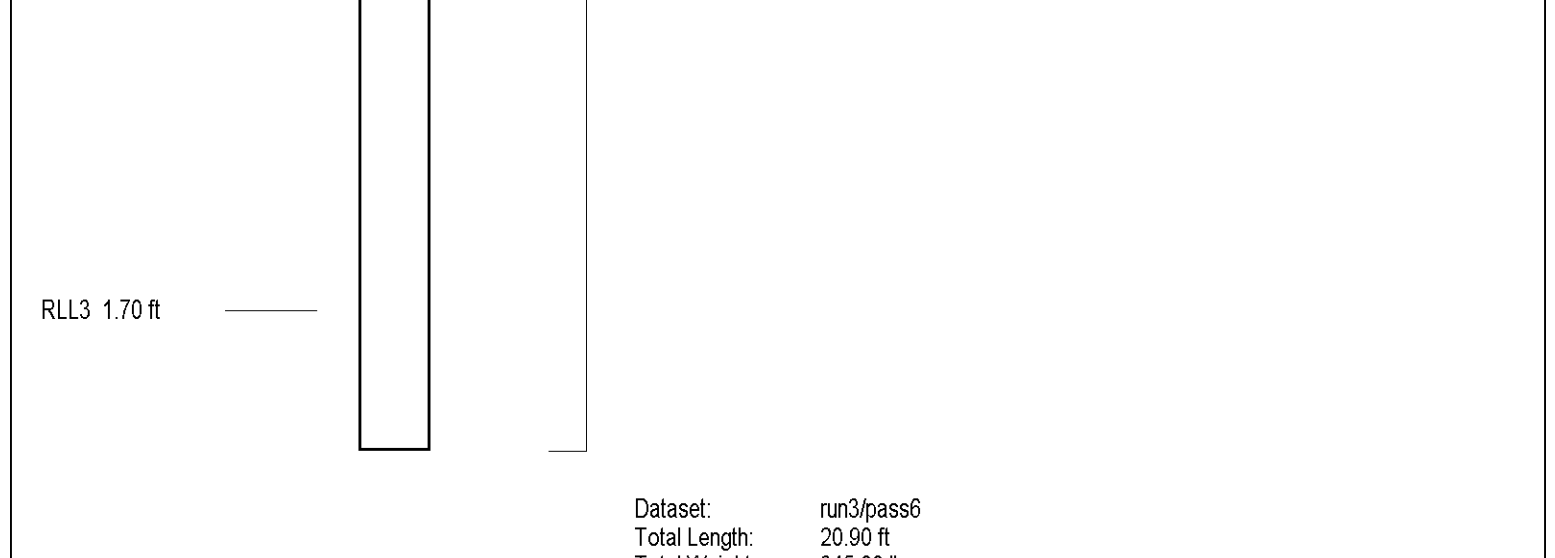
Rw=1.370 ohm-m @ 78.6 degF



Dual Induction Calibration Report

Serial-Model: 5390-R
Surface Cal Performed: Sun Jan 16 21:49:43 2005
Downhole Cal Performed: Tue Feb 21 13:00:33 2006
After Survey Verification Performed: Tue Feb 21 13:44:53 2006

Surface Calibration				References				Results					
Loop:	Air	Loop		Air	Loop	m	b						
Deep	0.050	0.646	V	0.000	400.000	mmho-m	671.771	-33.646					
Medium	0.001	0.732	V	0.000	464.000	mmho-m	634.710	-0.492					
Internal:				Zero				Cal		m		b	
Deep	0.011	0.641	V	0.000	400.000	mmho-m	634.996	-7.104					
Medium	-0.009	0.738	V	0.000	464.000	mmho-m	620.900	5.734					
Downhole Calibration				References				Results					
Internal:	Zero	Cal		Zero	Cal	m	b						
Deep	-27.283	397.191	mmho-m	-26.130	397.036	mmho-m	0.997	1.068					
Medium	-6.241	469.176	mmho-m	-6.353	467.967	mmho-m	0.997	0.357					
Shallow	0.010	0.003	V	494.500	2.000	Ohm-m	77812.094	-253.511					
After Survey Verification				Targets				Results					
Internal:	Zero	Cal		Zero	Cal	m'	b'						
Deep	-26.901	396.404	mmho-m	-27.282	397.191	mmho-m	0.997	1.068					
Medium	-6.241	469.176	mmho-m	-6.733	469.176	mmho-m	0.997	0.357					
Shallow	291.706	167.275	Ohm-m	494.500	2.000	Ohm-m	3.958	-660.076					



Dataset: run3/pass6
Total Length: 20.90 ft
Total Weight: 345.00 lb
O.D.: 4.00 in



**FLUID CONDUCTIVITY
TEMPERATURE
LOG**

Company **Diversified Drilling Corporation**
 Well **RO-118**
 Field **Naples**
 County **Collier** State/Prv **Florida**

Location
**Vanderbilt Road Extension
 North Collier Regional WTP
 Hazen & Sawyer, Inc.**

Permanent Datum
 Log Measured From
 Drilling Measured From

Elevation
 G.L.
 G.L.
 G.L.

Other Services
 XY/GR
 DIL/SP
 FLOW

Date
21-FEB-2006

Run Number
 Depth Driller
 Depth Logger
 Bottom Logged Interval
 Top Log Interval
 Open Hole Size
 Type Fluid
 Density / Viscosity
 Max. Recorded Temp.
 Estimated Cement Top
 Time Well Ready
 Time Logger on Bottom
 Equipment Number
 Location
 Recorded By
 Witnessed By

Casing Record
 Surface String
 Prod. String
 Production String
 Liner

<<< Fold Here >>>

All interpretations are opinions based on inferences from electrical or other measurements and we cannot and do not guarantee the accuracy or correctness of any interpretation, and we shall not, except in the case of gross or willful negligence on our part, be liable or responsible for any loss, costs, damages, or expenses incurred or sustained by anyone resulting from any interpretation made by any of our officers, agents or employees. These interpretations are also subject to our general terms and conditions set out in our current Price Schedule.

Comments

STATIC and DYNAMIC DOWN passes were performed.
 Cw=7300 uS/cm @ 78.6 degF (Dynamic Sample). Q ~505 gpm.
 FLUID RESISTIVITY CALIBRATION REPORT (Performed: 16-FEB-06 12:00)

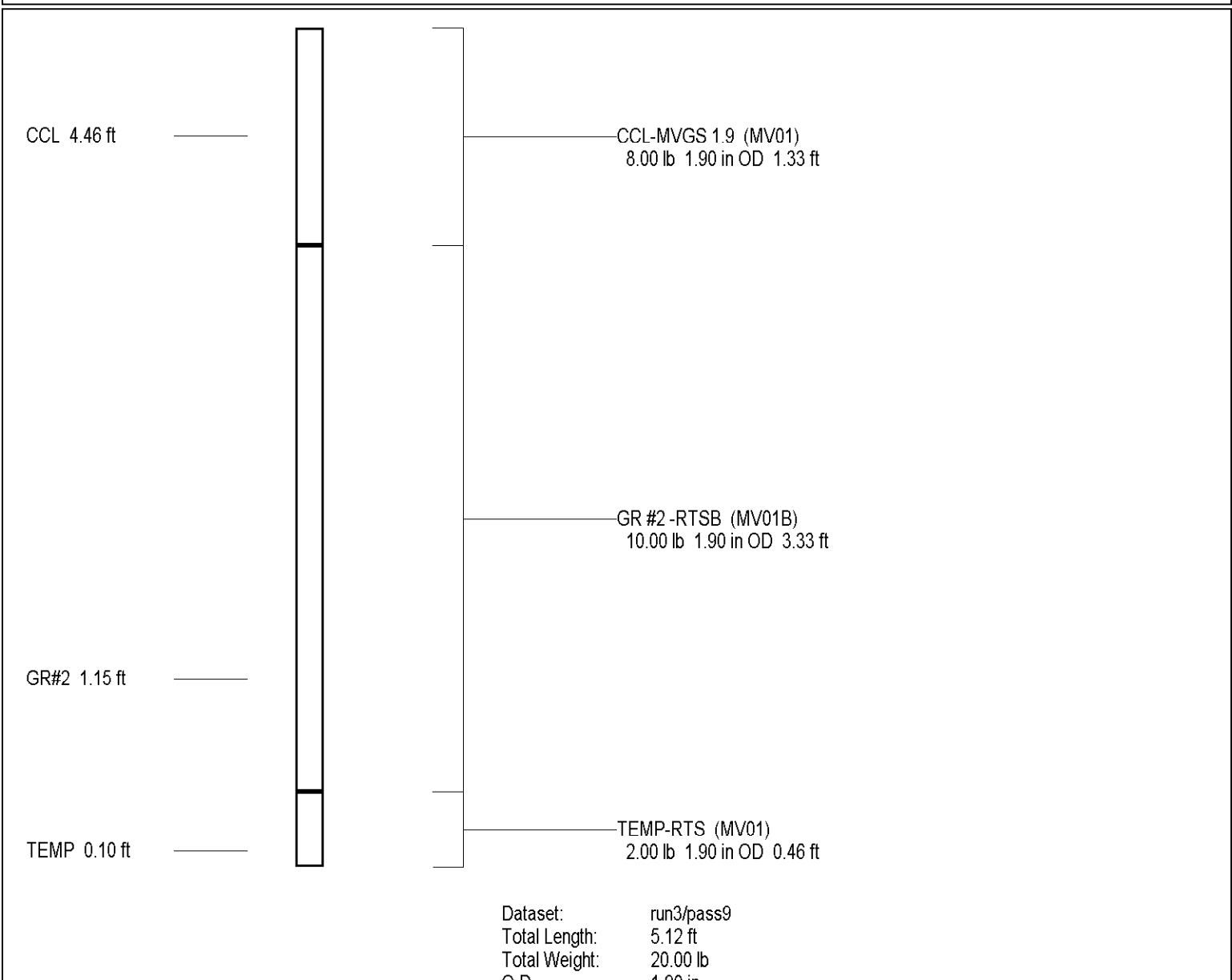
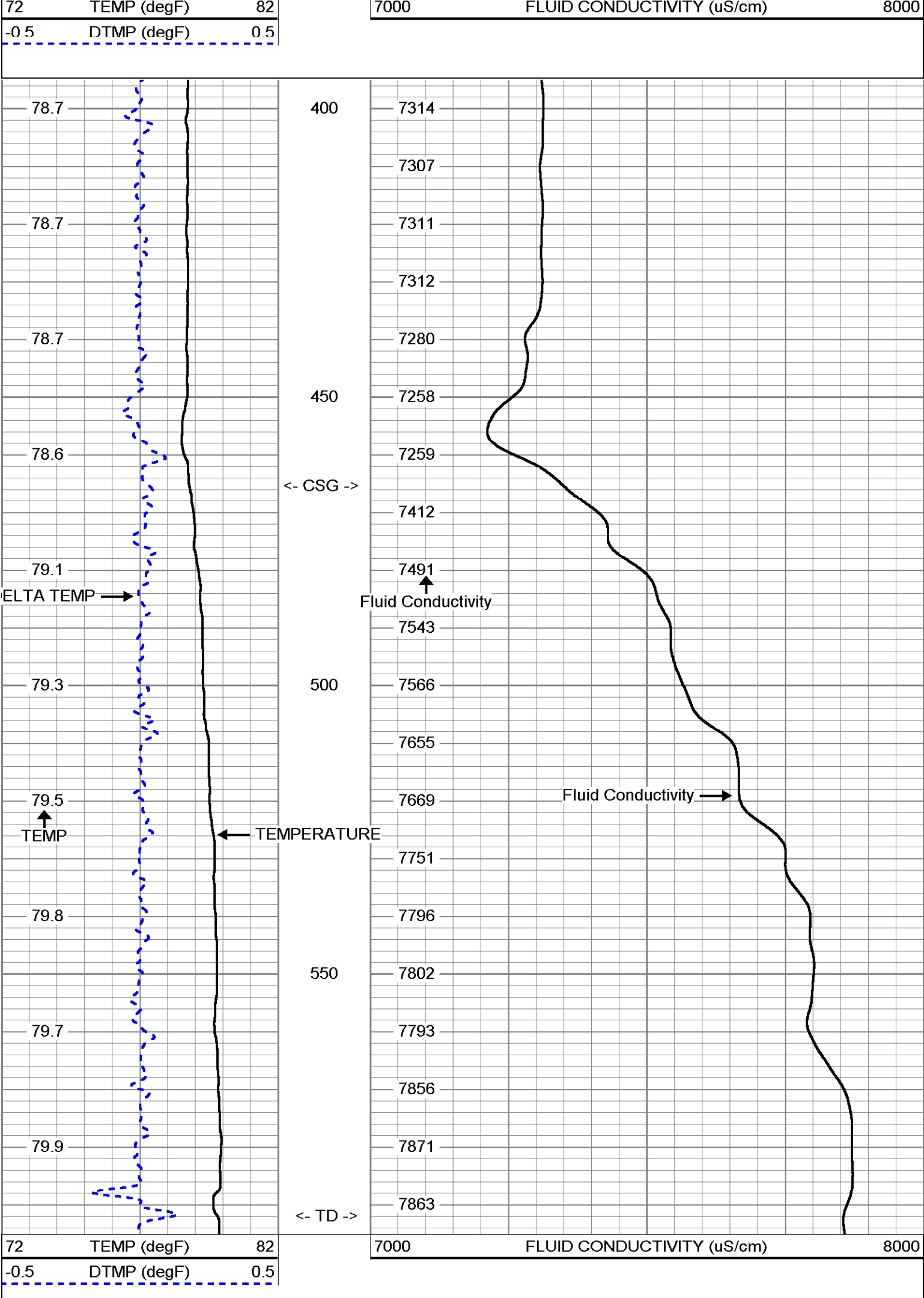
OHM-M	CPS
824.5	4413.35
4546.7	3800.13
8319.4	3235.68

TEMPERATURE CALIBRATION REPORT (Performed: 16-FEB-06 12:30)

DEG-F	CPS
34.8	2349.64
142.2	6966.21

MV Geophysical **DYNAMIC FCT DOWN**

Database File: ncr-118.db
 Dataset Pathname: run3/DFCT
 Presentation Format: FCT118
 Dataset Creation: Tue Feb 21 14:57:14 2006
 Charted by: Depth in Feet scaled 1:240



Company Diversified Drilling Corp.		Company Diversified Drilling Corporation	
Well	RO-118	Well	RO-118
Field	Naples	Field	Naples
County	Collier	County	Collier
State/Prv	Florida	State/Prv	Florida
Location Vanderbilt Road Extension North Collier Regional WTP Hazen & Sawyer, Inc.		Other Services XY/GCR D/LSP FCT	
Date	21-FEB-2006	Log Measured from	G.L.
Run Number	THREE	Drilling Measured from	G.L.
Depth Driller	596'	Elevation	K.B. D.F. G.L.
Depth Logger	592'		
Bottom Logged Interval	592'		
Top Log Interval	396'		
Open Hole Size	14.75"		
Type Fluid	H2O		
Density / Viscosity	NA/NA		
Max. Recorded Temp.	NA		
Estimated Cement Top	NA		
Time Well Ready	11:45 Z/21/2006		
Time Logger on Bottom	15:30 Z/21/2006		
Location	FL Myers		
Equipment Number	FWMS-1		
Recorded By	S. Miller		
Witnessed By	J. Wheeler (HS)		
Run Number	BIT	From	To
ONE	32"	SURFACE	147'
TWO	23"	140'	462'
THREE	14.75"	465'	595'
Casing Record	592' Logger		
Surface String	24"	Weight	Top
Prod. String	16" FRP	15.875" ID	SURFACE
Production String			465'
Invoice No.	2006042	P.O. #.	26939
		Job No.	6403
			* FIELD PRINT *

<<< Fold Here >>>

All interpretations are opinions based on inferences from electrical or other measurements and we cannot and do not guarantee the accuracy or correctness of any interpretation, and we shall not, except in the case of gross or willful negligence on our part, be liable or responsible for any loss, costs, damages, or expenses incurred or sustained by anyone resulting from any interpretation made by any of our officers, agents or employees. These interpretations are also subject to our general terms and conditions set out in our current Price Schedule.

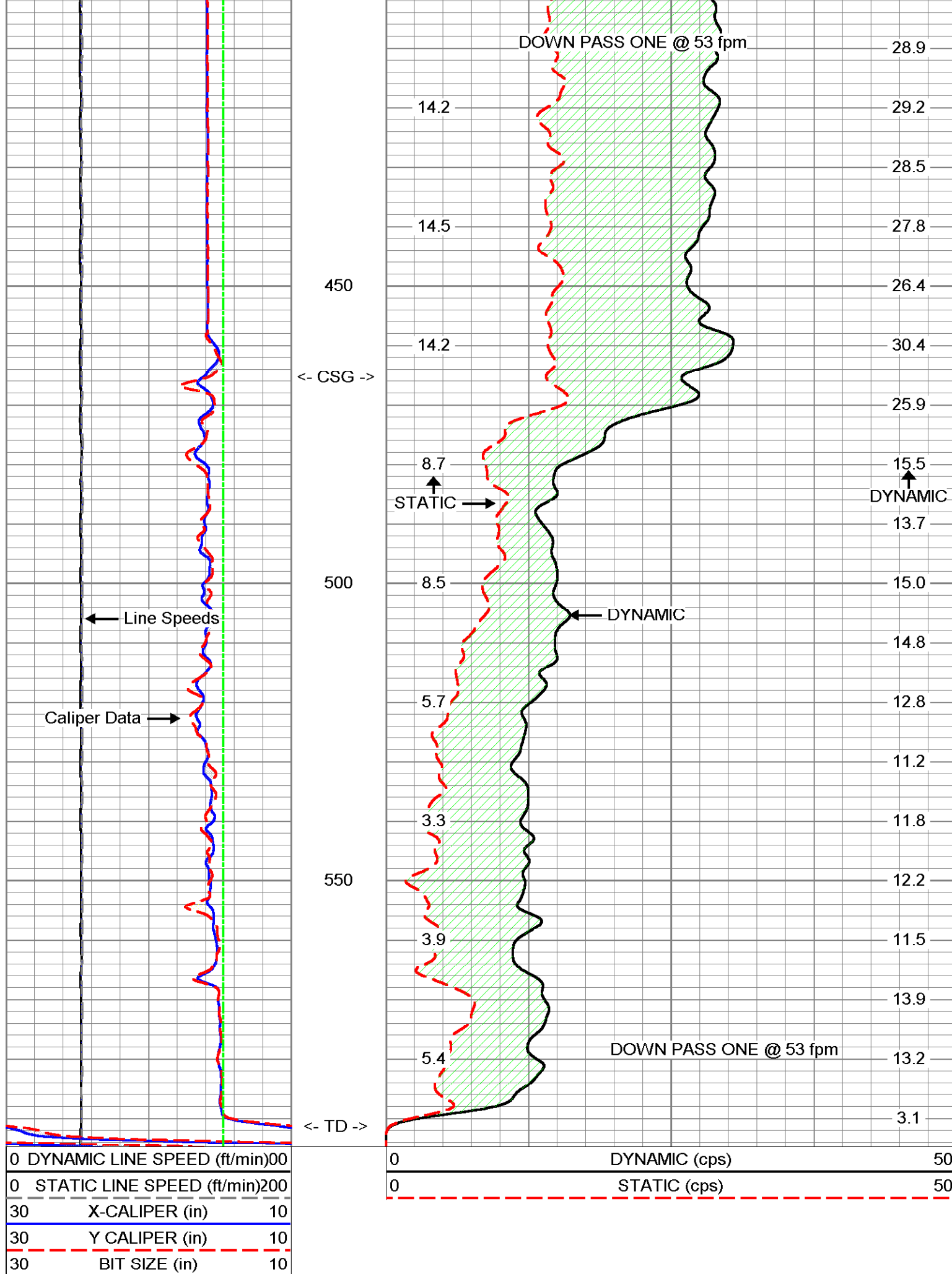
Comments

STATIC and DYNAMIC down passes were made at 53 fpm.
1 stations performed.
Q ~505 gpm

MV Geophysical S/D DOWN @ 53 fpm

Database File: ncr-118.db
Dataset Pathname: run3/SD53
Presentation Format: Q-50
Dataset Creation: Tue Feb 21 16:09:21 2006
Charted by: Depth in Feet scaled 1:240

0 DYNAMIC LINE SPEED (ft/min)	0	DYNAMIC (cps)	50
0 STATIC LINE SPEED (ft/min)	200	STATIC (cps)	50
30 X-CALIPER (in)	10		
30 Y CALIPER (in)	10		
30 BIT SIZE (in)	10		

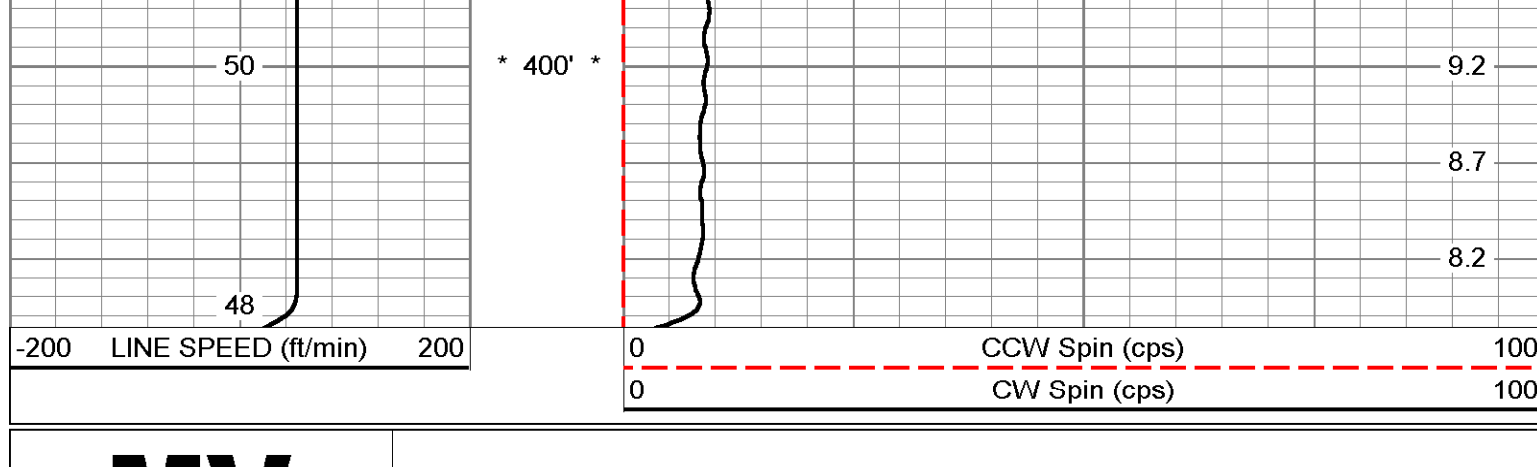


0 DYNAMIC LINE SPEED (ft/min)	0	DYNAMIC (cps)	50
0 STATIC LINE SPEED (ft/min)	200	STATIC (cps)	50
30 X-CALIPER (in)	10		
30 Y CALIPER (in)	10		
30 BIT SIZE (in)	10		

MV Geophysical Station #1: 400'

Database File: ncr-118.db
Dataset Pathname: run3/pass14
Presentation Format: FLOW
Dataset Creation: Tue Feb 21 16:35:12 2006 by Log VER_5.3
Charted by: Depth in Feet scaled 1:240

-200 LINE SPEED (ft/min)	200	0 CCW Spin (cps)	100
		0 CW Spin (cps)	100

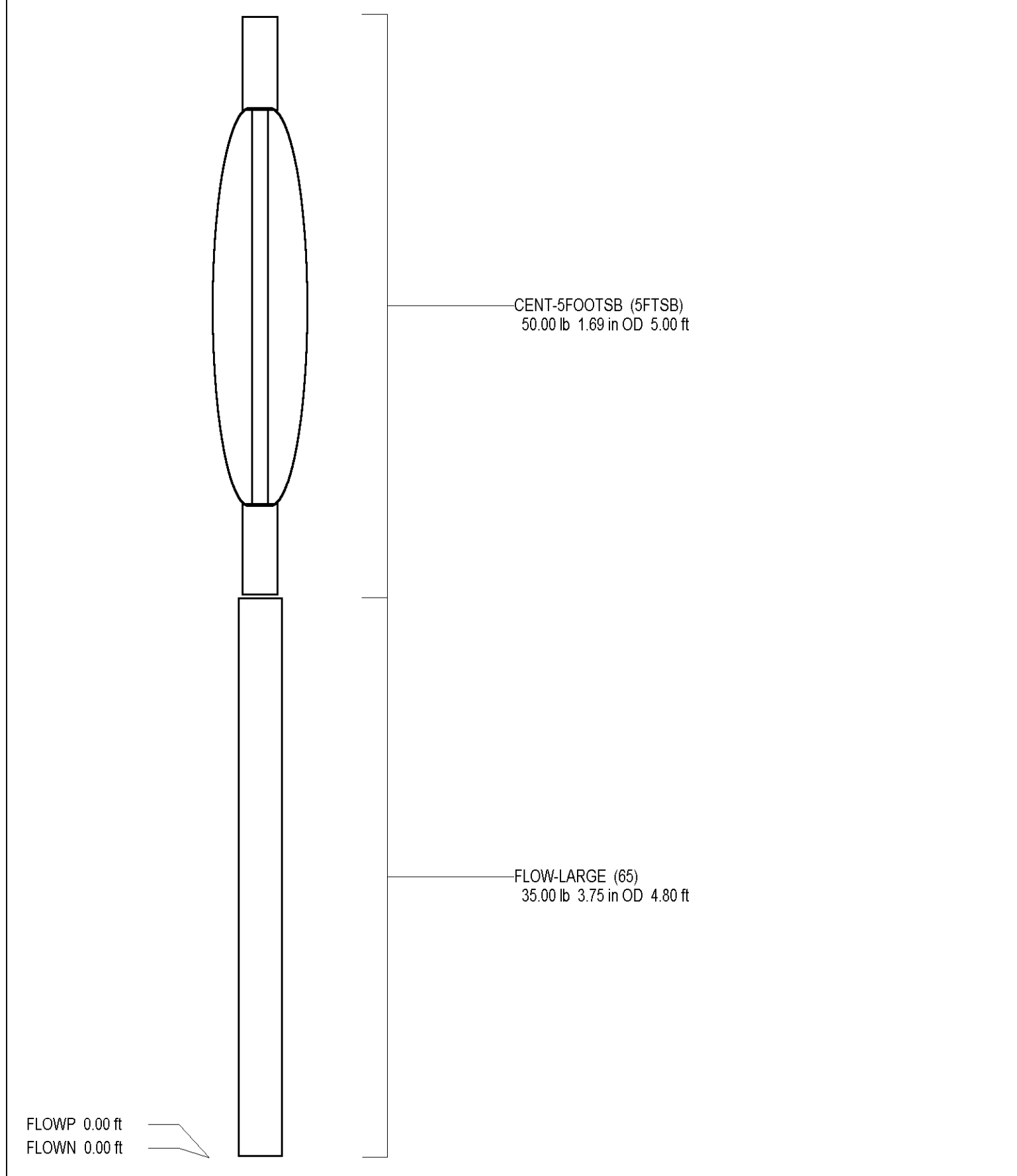
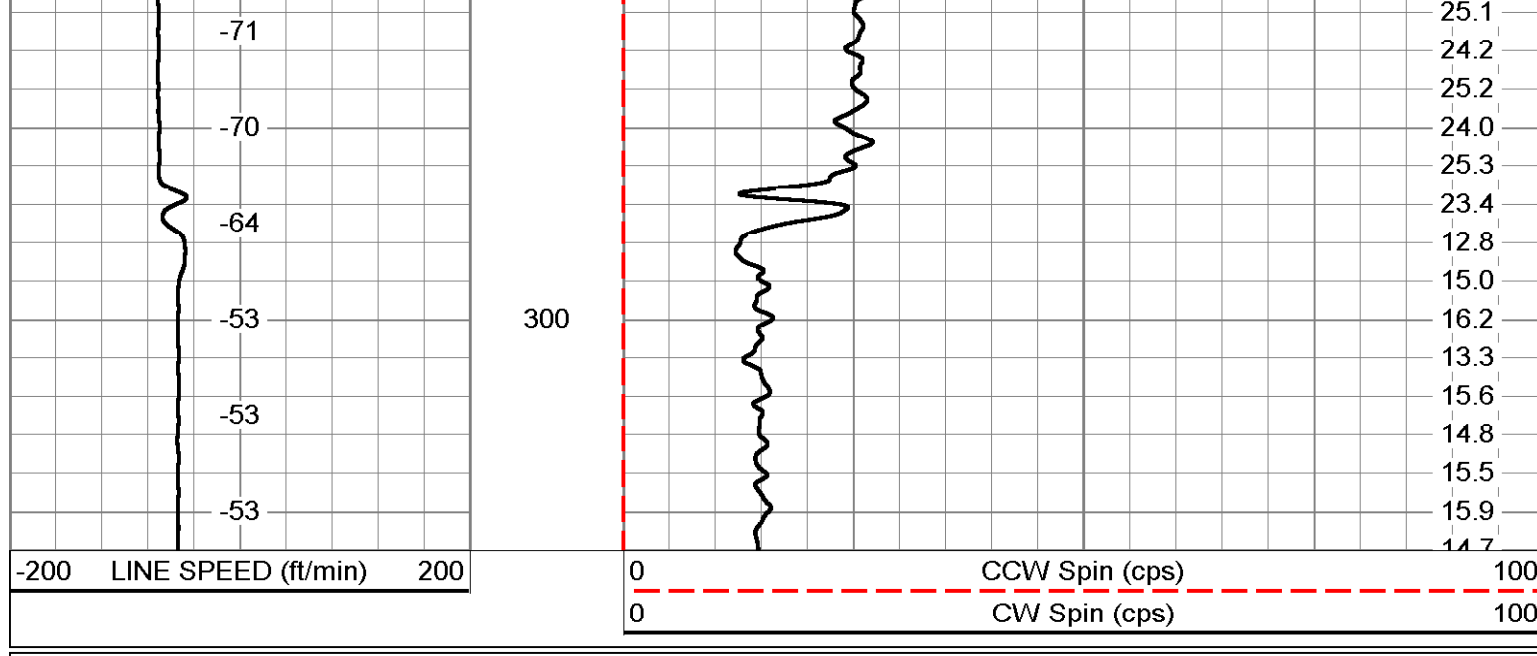


-200 LINE SPEED (ft/min)	200	0 CCW Spin (cps)	100
		0 CW Spin (cps)	100

MV Geophysical Q Calibration Down

Database File: ncr-118.db
Dataset Pathname: run3/pass10
Presentation Format: FLOW
Dataset Creation: Tue Feb 21 15:48:49 2006 by Log VER_5.3
Charted by: Depth in Feet scaled 1:600

-200 LINE SPEED (ft/min)	200	0 CCW Spin (cps)	100
		0 CW Spin (cps)	100



Dataset: run3/pass10
Total Length: 9.80 ft
Total Weight: 85.00 lb
O.D.: 3.75 in

Company: Diversified Drilling Corporation
 Well: RO-118
 Field: Naples
 County: Collier
 State/Pvt: Florida
 Location: Vanderbilt Road Extension
 North Collier Regional WTP
 Hazen & Sawyer, Inc.
 Other Services: FCS FLOW
 Date: 21-FEB-2006
 Run Number: THREE
 Digit Number: 595
 Depth Interval: 502'
 Bottom Interval: SURFACE
 Top Interval: SURFACE
 Open Hole Size: 14.75"
 Type Fluid: H2O
 Density / Viscosity: 8.8/41
 Max. Reservoir Temp. (°F): 114
 Time Lapsed on Bottom: 11:45:27/12/06
 Time Well Ready: 11:45:27/12/06
 Equipment Number: MMS-1
 Location: Ft Myers
 Witnessed By: J. Wheeler (HS)
 Recorded By: S. Miller
 F. Meters: 1145.27/12/06
 Revisions: 1
 Revisions No.: 2006042
 P. O. #: 26889
 400 No.: 6403
 FIELD PRINT

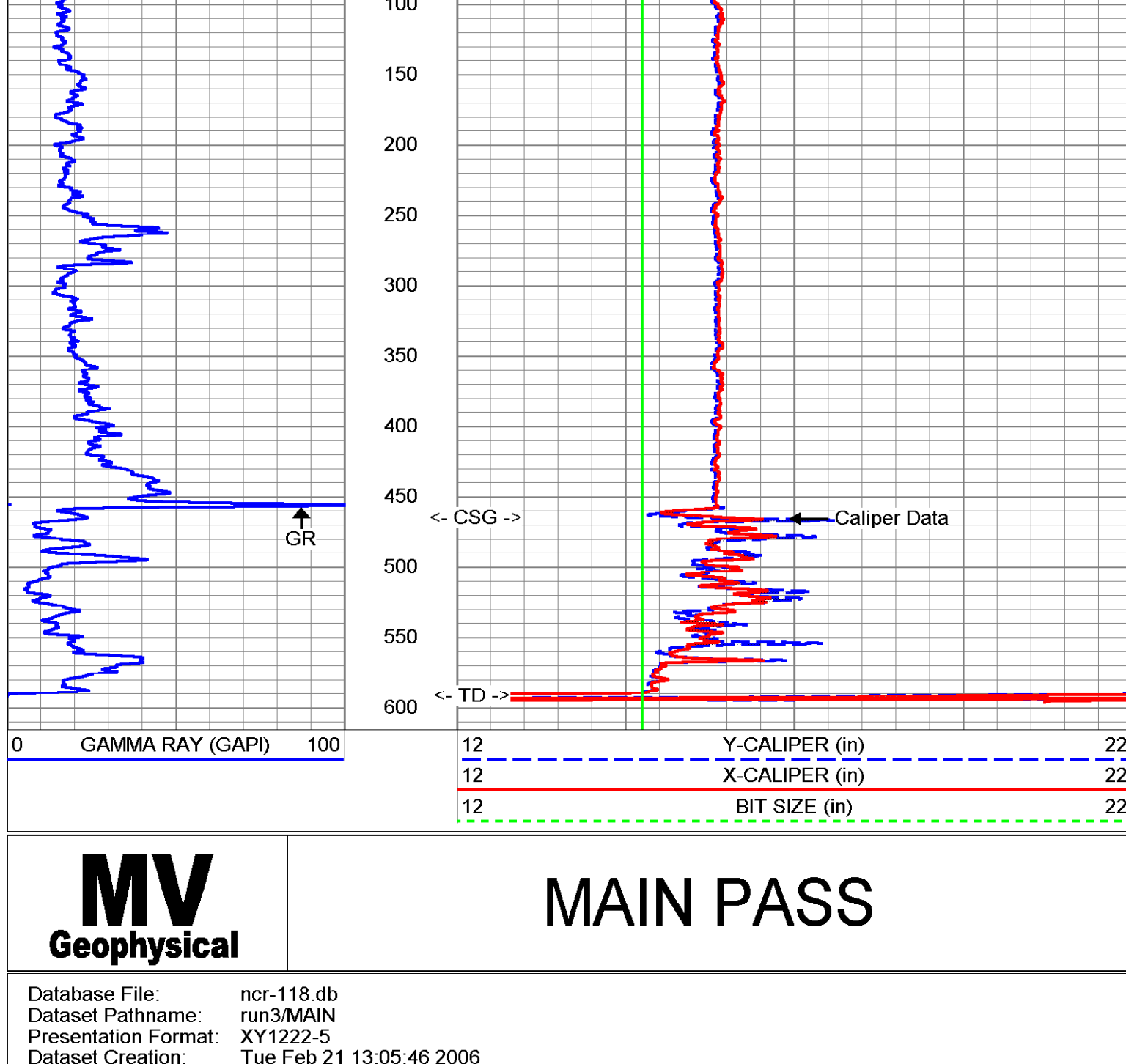
<<< Fold Here >>>

All interpretations are opinions based on inferences from electrical or other measurements and we cannot and do not guarantee the accuracy or correctness of any interpretation, and we shall not, except in the case of gross or willful negligence on our part, be liable or responsible for any loss, costs, damages, or expenses incurred or sustained by anyone resulting from any interpretation made by any of our officers, agents or employees. These interpretations are also subject to our general terms and conditions set out in our current Price Schedule.

Comments
 X-Y Caliper Arm Extensions: 33"

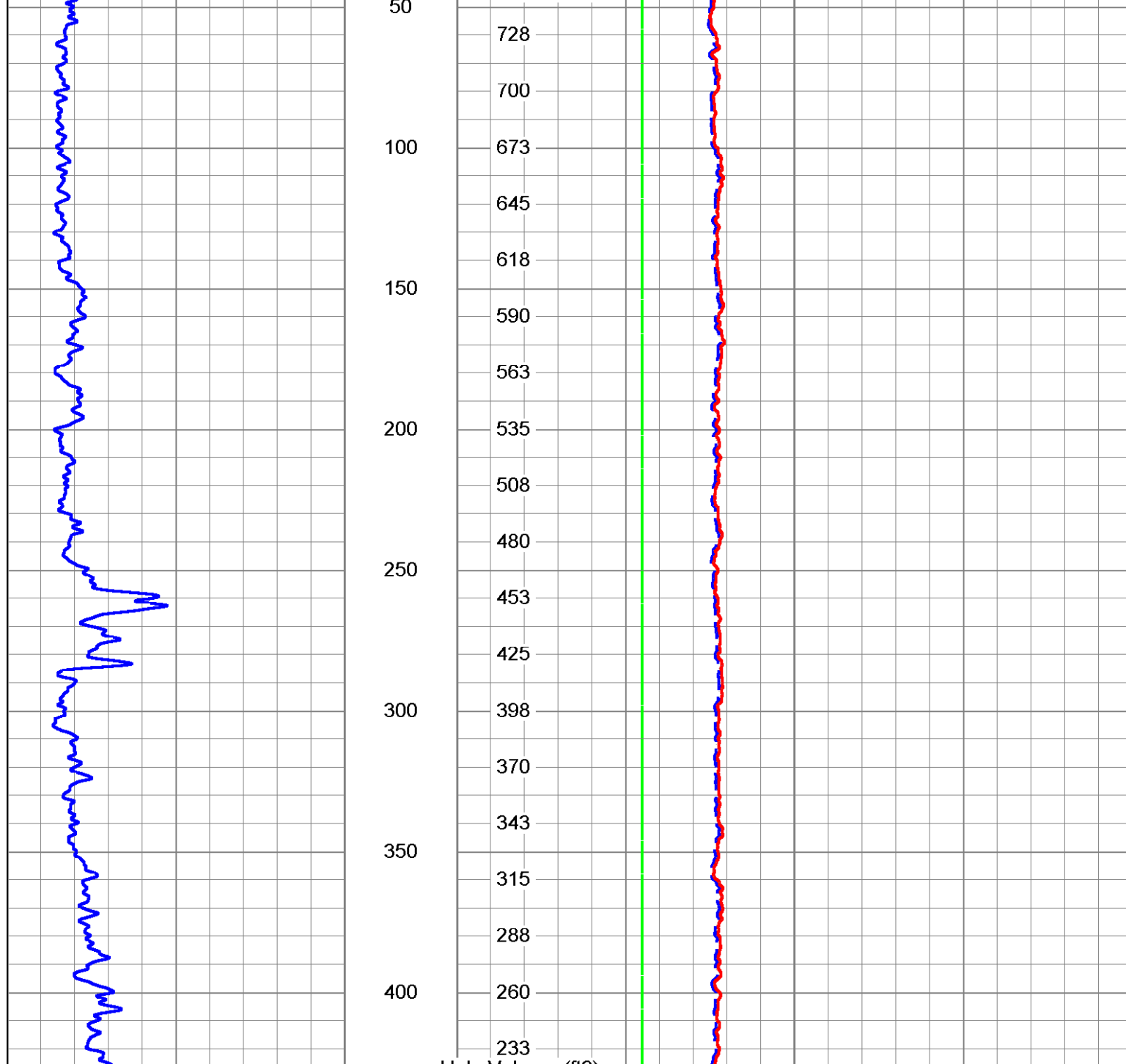
MV Geophysical **MAIN PASS**

Database File: ncr-118.db
 Dataset Pathname: run3/MAIN
 Presentation Format: XY1222-1
 Dataset Creation: Tue Feb 21 13:05:46 2006
 Charted by: Depth in Feet scaled 1:1200



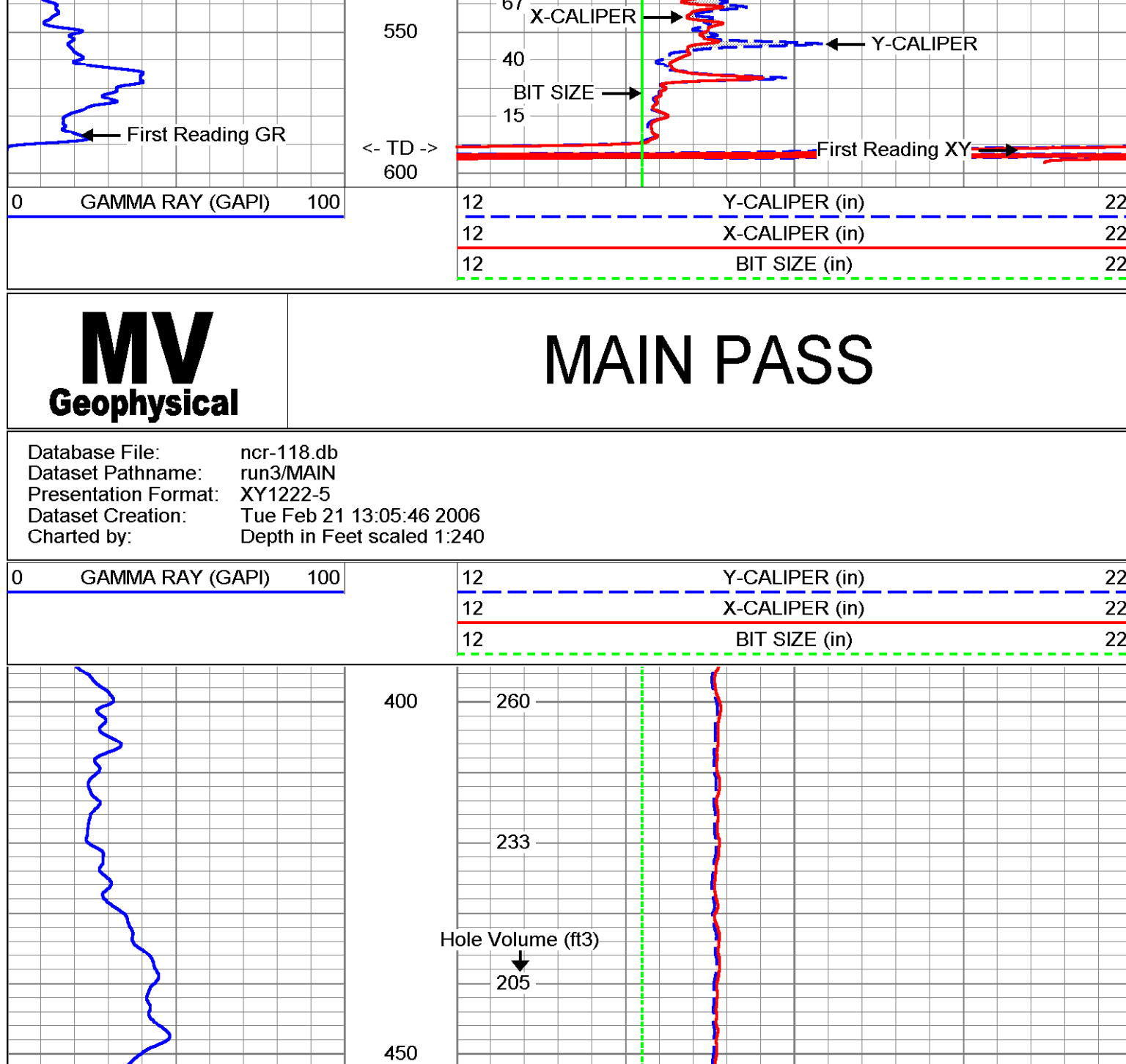
MV Geophysical **MAIN PASS**

Database File: ncr-118.db
 Dataset Pathname: run3/MAIN
 Presentation Format: XY1222-5
 Dataset Creation: Tue Feb 21 13:05:46 2006
 Charted by: Depth in Feet scaled 1:600



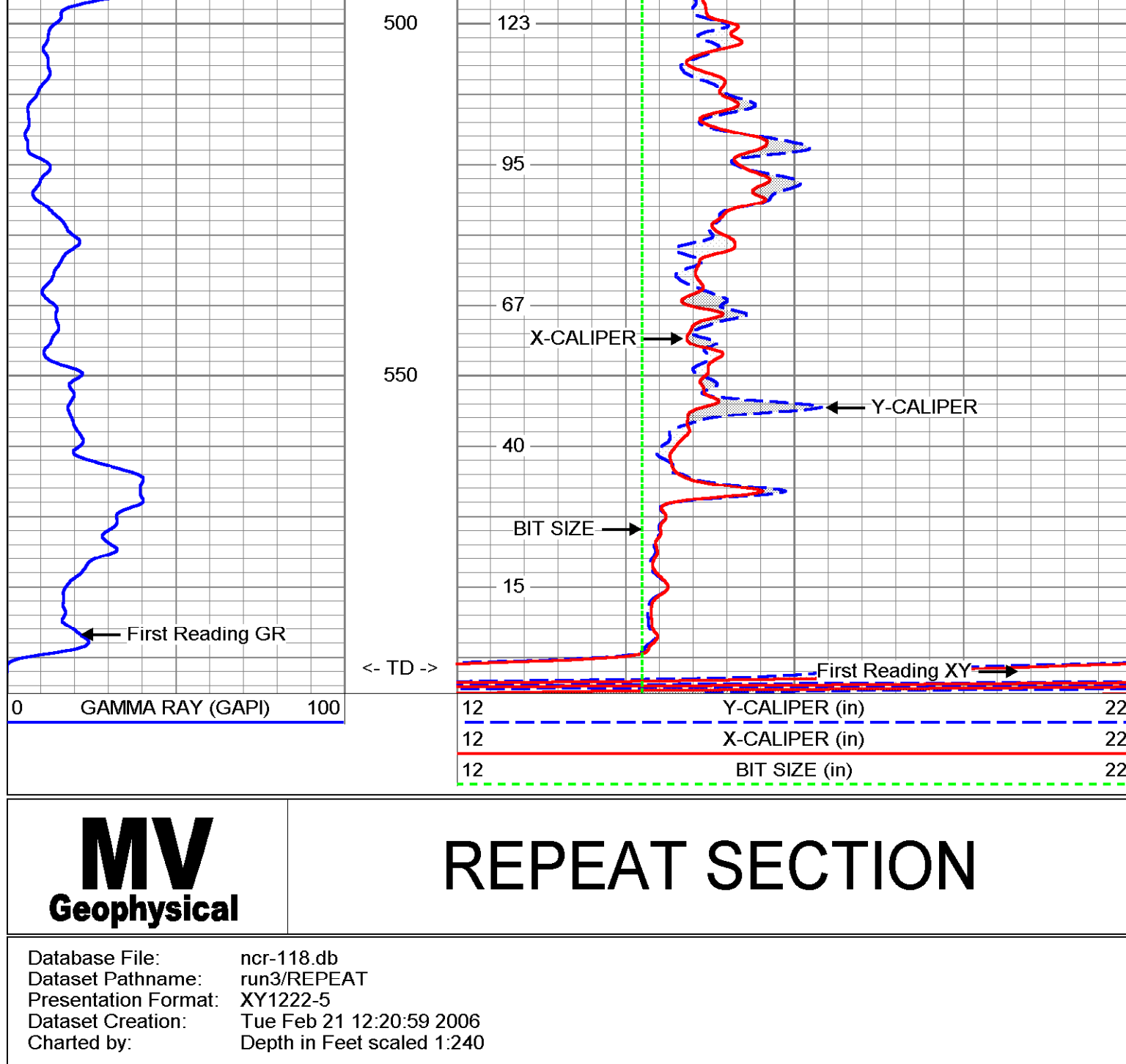
MV Geophysical **MAIN PASS**

Database File: ncr-118.db
 Dataset Pathname: run3/MAIN
 Presentation Format: XY1222-5
 Dataset Creation: Tue Feb 21 13:05:46 2006
 Charted by: Depth in Feet scaled 1:240



MV Geophysical **REPEAT SECTION**

Database File: ncr-118.db
 Dataset Pathname: run3/REPEAT
 Presentation Format: XY1222-5
 Dataset Creation: Tue Feb 21 12:20:59 2006
 Charted by: Depth in Feet scaled 1:240



XY Caliper Calibration Report

Serial Number: 01S
 Tool Model: XYCS
 Performed: Tue Feb 21 12:36:21 2006
 Small Ring: 15.875 in
 Large Ring: 33 in
 Reading with Small Ring: 737.2 cps
 Reading with Large Ring: 1096.12 cps
 Gain: 0.0477126
 Offset: -19.2987

Gamma Ray Calibration Report

Serial Number: 01
 Tool Model: GROH
 Performed: Tue Feb 21 12:22:14 2006
 Calibrator Value: 120 GAPI
 Background Reading: 7.696 cps
 Calibrator Reading: 127.61 cps
 Sensitivity: 1.00072 GAPI/cps

