

# SFWMD

# St Lucie County Wells

Work Order # C-C19901P-W010

## STL 134

## Well and Benchmark



# WELL SITE: STL 134

## WELL LOCATION:

N - 1081039

E - 819337

## WELL ELEVATION:

24.762 (NAVD1988)

26.235 (NGVD1929)

## BENCHMARK USED FOR THIS WELL SITE: SFWMD STL 134 2005

### BENCHMARK LOCATION:

N - 108463

E - 819454

### BENCHMARK ELEVATION:

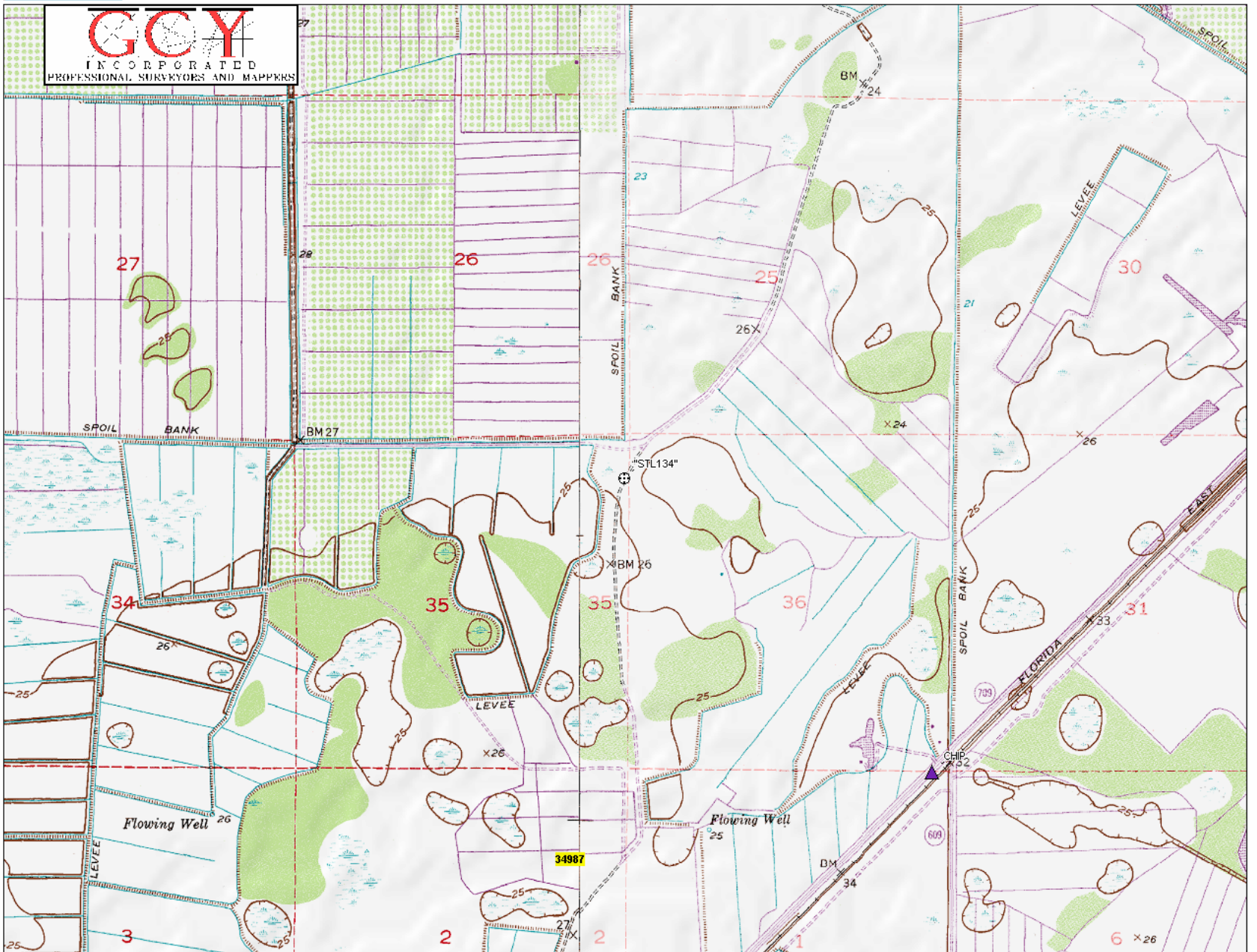
22.762 (NAVD1988)

24.219 (NGVD1929)

## NOTES:

1. COORDINATES USED HEREON ARE REFERENCED TO THE STATE PLANE COORDINATE SYSTEM, FLORIDA EAST ZONE, NAD83/99 AND ARE IN U.S. SURVEY FEET.
2. ELEVATIONS WERE DETERMINED BY SECOND ORDER, CLASS 2 LEVELING FROM PUBLISHED NGS BENCHMARKS TO NEW BENCHMARKS ESTABLISHED AT THE WELL SITE. LEVELING IS BEING SUBMITTED TO NGS FOR INCLUSION INTO THE NGS DATABASE. **ELEVATIONS SHOWN HEREON ARE PRELIMINARY AND ARE SUBJECT TO CHANGE UPON EXCEPTANCE OF THE BLUE BOOK DATA INTO THE NGS DATABASE.**

**GCOY**  
INCORPORATED  
PROFESSIONAL SURVEYORS AND MAPPERS



Data use subject to license.

© 2004 DeLorme. XMap® 4.5.

www.delorme.com



MN (5.6° W)



Data Zoom 13-0

# STL 134

## Fieldnotes

ST. LUCIE COUNTY WELLS  
WELL & B.M. STL 134

RECOVERED WELL 0.4' ABOVE GRADE

GET 3/2" BRASS DISK IN CONC. (4 1/2 - 8 LB BRASS IN  
STANDARD "BELL SHAPED HOLE") ST. W.M.D. SURVEY MARKER  
STL 134 2005.

02-10-25

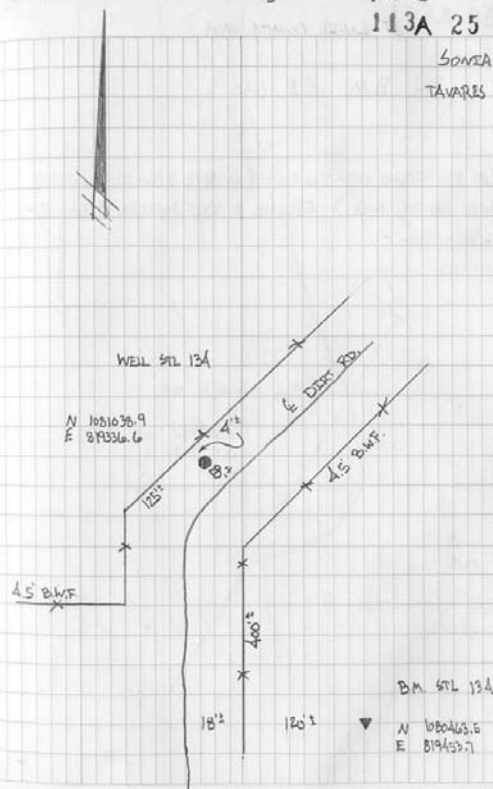
8-15-05

WMD

113A 25

SONEIA

TAVARES



# STL 134

## Fieldnotes

SFWD / ST. LOUISE COUNTY WELLS		WELLS	
BRANCH RUN THROUGH	WELL	STL 134	
			NAND88
+	H.I.	-	EL
6.59			22.762
4.99	31'		
3.40			
4.99	27.752		
		4.35	
		2.99	
		1.6A	
		2.99	24.762
4.71			
3.24			
1.99			
3.35	28.112	6.98'	
		5.3A	
		3.75	
		5.3A	22.772

02-10-25		8-2A-05 NA 3003		WMO 113A 29	
		DESCRIPTION		SOURCE	
		(SEE P. 25)		TAVARES	
				ESKINWINE	
B.M.	STL 134				
TOP 2" PVC . SMALL "X" ON SOUTH RIM WELL STL 134					
B.M.	STL 13A				
END OF RUN					

# STL 134

Well



# STL 134

Well



# STL 134

Benchmark





# STL 134

Benchmark



---

## SURVEYOR'S REPORT

### BENCHMARK AND WELL "STL 134"

1. Elevations shown herein are referenced to the North American Vertical Datum of 1988 (NAVD88) and are in represented in U.S. Survey Feet.
2. Elevations represented as NGVD 1929 (National Geodetic Vertical Datum of 1929) were determined from either the superceded values given on the NGS Datasheet downloaded from the NGS website or were determined using the "NGVD29.TXT" file. Vertcon **was not** used to transform NAVD88 elevations to NGVD29 values.
3. A Second Order Class II level run was performed to bring vertical control to newly constructed benchmarks at or near the specific well site. The data for level run is being submitted to NGS in "Blue-Book" format so that it will be included into the NGS database. Newly constructed benchmarks meet the NGS guidelines for a "Stability C" monument and have a SFWMD Survey Marker set in them.
4. A 3 wire – third order leveling was performed between the established benchmark and the existing well.
5. Vertical Control used for this Benchmark and Well are as follows:  
R 544 (NGS PID AJ8587)      T 544 (NGS PID AJ8589)  
S 544 (NGS PID AJ8588)      HAWK (NGS PID AJ8590)
6. Leveling for this site was performed on August 22-24,29 and 31, 2005.

### Certification

(Not valid without the signature and original raised seal of a Florida licensed Surveyor and Mapper)

I hereby certify that the Specific Purpose Survey indicated hereon was completed under my direction. I further certify that this Survey meets the Minimum Technical Standards for Surveys set forth by the Florida Board of Professional Surveyors and Mappers in Chapter 61G17-6, Florida Administrative Code, pursuant to Section 472.027, Florida State Statutes.

Date of Survey \_\_\_\_\_

Date of Signature \_\_\_\_\_

---

Peter Andersen  
Professional Survey and Mapper  
Florida Certificate No. 5199