



SOUTH FLORIDA WATER MANAGEMENT DISTRICT

Rev. 1/16

DB Hydro Station Name: STL-266R		DB Hydro Site Name: (none)	Date of Field Work: 12-jun-17
Party Chief: Strickland		Field Book: MISc 7B	Page: 64
Site Benchmark: 9492A03	Benchmark Elevation (NAVD88) 34.331	Corpscon 6.0.1 Conversion Factor (NAVD88 to NGVD29) +1.496	
Reference Elevation(s) (NAVD88): 34.73	Existing Tag Elevation (Datum): (none)	Calibration Port Elevation(s) (NAVD88): Not applicable	
Ground Elevation (NAVD88): 34.9		Pad Elevation (NAVD88): Not applicable	
Latitude: 27°33'18.43"		Longitude: 80°22'12.80" (taken from FDOT GPS Network)	

Notes:
FDOT – Florida Department of Transportation
NAVD88 – North American Vertical Datum of 1988
NGVD29 - National Geodetic Vertical Datum of 1929
Corpscon 6.0.1 - A U.S. Army Corps of Engineers Engineering Research and Development Center Topographic Engineering Center Alexandria, Virginia Windows-based program to convert coordinates and elevations using vertcon05.txt and vertcon05.05 files supplied by the U.S. Army Corps of Engineers South Atlantic Division, Jacksonville FL.

PICTURES

Overall Site



STL-266R Well
 Reference El. 34.73
 NAVD88

Benchmark
 "9492A03"
 El. 34.331 NAVD88

Looking Southeasterly (Not to scale) (12-jun-17)



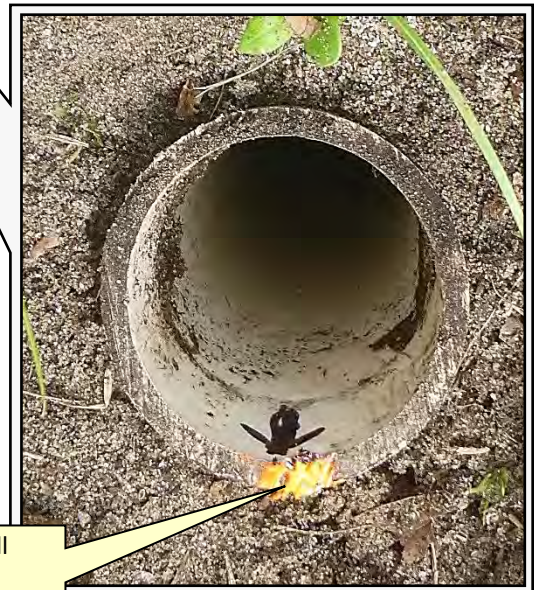
SOUTH FLORIDA WATER MANAGEMENT DISTRICT

Rev. 1/16

STL-266R Well
Looking Westerly (Not to scale) (12-jun-17)



Capped Well



Uncapped Well

STL-266R Well
Reference
El. 34.73 NAVD88
El. 36.22 NGVD29

SEC

X6

TWP

34

RGE

40

ESTABLISH AN NAD 88 ELEVATION FOR WELL STL-266R

STA	+	HI	-	EL.	BM EL.
BM	5.50	39.83		34.33	34.331
GROUND			4.90	34.93	
REF			5.10	34.73	
BM			5.50	34.33	

WISE STRICKLAND

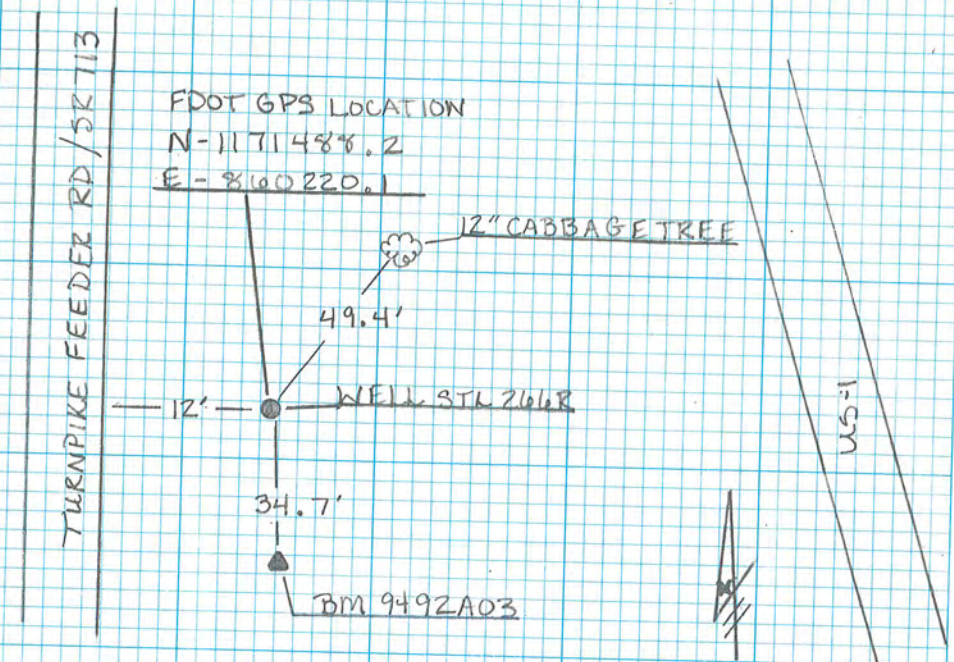
COMMENTS

BM 9492A03 FD FDOT BRASS DISC STAMPED 94 92 DOT A03 GOOD CONDITION

G-GROUND SHOT @ WELL

REFERENCE IS X-MARK ATOP EAST SIDE OF 2" PVC PIPE IS 0.2' BELOW GROUND

BM 9492A03 AS ABOVE





SOUTH FLORIDA WATER MANAGEMENT DISTRICT

Rev. 1/16

DESIGNATION: 9492A03		PROJECT: STL-266 Wells	
ESTABLISHED BY: FLOIDA DEPARTMENT OF TRANSPORTATION		SURVEYOR: Strickland	
RECOVERED BY: SOUTH FLORIDA WATER MANAGEMENT DISTRICT		DATE: 12-jun-17	
GEOGRAPHIC POSITION			
SECTION 6	TOWNSHIP 34 SOUTH	RANGE 40 EAST	
COUNTY: St. Lucie	NAME OF QUADRANGLE: INDRO GEOGRAPHIC INDEX OF QUAD: 2903		
HORIZONTAL DATUM: 1927 (1983) Other___ (circle one) ZONE (E) or W			
VERTICAL DATUM: MSL 1929 (1988) Other___ (circle one)			
VERTICAL ACCURACY: 1 2 (3)			
STATE PLANE COORDINATE	(N) Y= 1171454.5	(E) X= 860210.8	NAVD 88 EL. 34.331 NGVD 29 EL. 35.820
CORPSCON 6.0.1 CONVERSION FACTOR (NAVD88 TO NGVD29): +1.496			
LATITUDE: 27°33'18.101"		LONGITUDE: 80°22'12.909"	
RECOVERY DATA			
Stamping: 94 92 DOT A03			
<p>To Reach: The station is located about 6.0 miles southeast of Vero Beach and 7.9 miles northwest of Fort Pierce, just south of the Indian River-St. Lucie county line in section 6, township 34 south, range 40 east.</p> <p>From the intersection of U.S. Highway 1 and the FEC Railway near the county line, go south on U.S. 1 about 800 feet to the intersection with Florida's Turnpike feeder road; bear right on Florida's Turnpike feeder road and go about 450 feet to the station on the left.</p> <p>The station is 32 feet east of the centerline of Florida's Turnpike feeder road, 100 feet north of the north end of the west fuel pump island of an old gas station and 55 feet northwest of a wood power pole.</p> <p>The station is 4 feet east of a metal witness post.</p>			
NOTABLE LAND MARKS:			
NGS SOURCE BENCHMARK: P200 (AF3303)			
FIELD BOOK		PAGE	
PICTURES			
Overall Site			
Looking North Northeast (Not to scale) (12-jun-17)			<p>Brass cap stamped "94 92 DOT A03" El. 34.331 NAVD88 El. 35.820 NGVD29</p>



SOUTH FLORIDA WATER MANAGEMENT DISTRICT

Rev. 1/16

Field Notes (FB MISC 7B page 64)

64 MISC FB# 7B 6-12-17

SEC	TWP	RGE	40		
ESTABLISH AN NAVD 88 ELEVATION FOR WELL STL-264R					
STA	+	HI	-	EL	BMEV
BM	5.50	39.83		34.33	34.331
GROUND			4.90	34.93	
REF			5.10	34.73	
BM		5.50		34.33	

MISC FB# 7B 6-12-17 64

T III WISE
STRICKLAND

COMMENTS

BM 9492A03 FD FDOT BRASS DISC STAMPED 94 92 DOT A03 GOOD CONDITION

GROUND SHOT @ WELL

REFERENCE IS X-MARK AT TOP EAST SIDE OF 2" PVC PIPE IS 0.2' BELOW GROUND

BM 9492A03 AS ABOVE

FDOT GPS LOCATION
N=11711485.2
E=8160220.1

12" CABBAGETR TREE

49.4'

12' WELL STL 264R

34.7'

BM 9492A03

TURNPIKE FEEDER RD / SR 113

US-1

Office

Project

13 June 2017

INPUT

State Plane, flhp gn - Florida HPGN
0901 - Florida East, U.S. Feet
Vertical - NAVD88, U.S. Feet

OUTPUT

Geographic, flhp gn - Florida HPGN
Vertical - NGVD29 (Custom), U.S. Feet

9492A03

1/1

Northing/Y: 1171454.5

Easting/X: 860210.8

Elevation/Z: 0

Convergence: 0 17 28.79058

Scale Factor: 0.999988903

Combined Factor: 0.999993231

Latitude: 27 33 18.10102

Longitude: 80 22 12.90928

Elevation/Z: 1.496

Remark:

Corpscon v6.0.1, U.S. Army Corps of Engineers

Office

Project

13 June 2017

INPUT

State Plane, flhpgn - Florida HPGN
0901 - Florida East, U.S. Feet
Vertical - NAVD88, U.S. Feet

OUTPUT

Geographic, flhpgn - Florida HPGN
Vertical - NGVD29 (Custom), U.S. Feet

STL-266R

1/1

Northing/Y: 1171488.2
Easting/X: 860220.1
Elevation/Z: 0
Convergence: 0 17 28.84251
Scale Factor: 0.999988908
Combined Factor: 0.999993236

Latitude: 27 33 18.43426
Longitude: 80 22 12.80405
Elevation/Z: 1.496

Remark:

Corpscon v6.0.1, U.S. Army Corps of Engineers

DBHYDRO | by station

STATION INFORMATION

Station	STL-266R
Site	
Type	WELL
Latitude (ddmmss.sss)	273318.5
Longitude (ddmmss.sss)	802212.8
X Coord (ft) NAD83	860220.344
Y Coord (ft) NAD83	1171494.722
County	St. Lucie
Basin	NORTH COASTAL
Section	6
Township	34
Range	40
Show Map	Google Map
Well Info	Info
Description	REPLACEMENT WELL FOR STL-266, KINGS HWY AND US 1, ST LUCIE COUNTY
Notes	
Nearby Stations	Nearby Stations
Attachments	None Available

Query returned 1 station record(s).

Get Sample Data

Get Time Series Data