



RMBAKER LLC

WELL: STL-287_GW1
LOG STAGE:

Geology and Geophysics

8600 Oldbridge Lane
Orlando, FL 32819
mobile ph 407-733-8958
fax 407-370-4129

LOGS PROVIDED:
HRAT IMAGING

rob@rmbaker.com
www.rmbaker.com

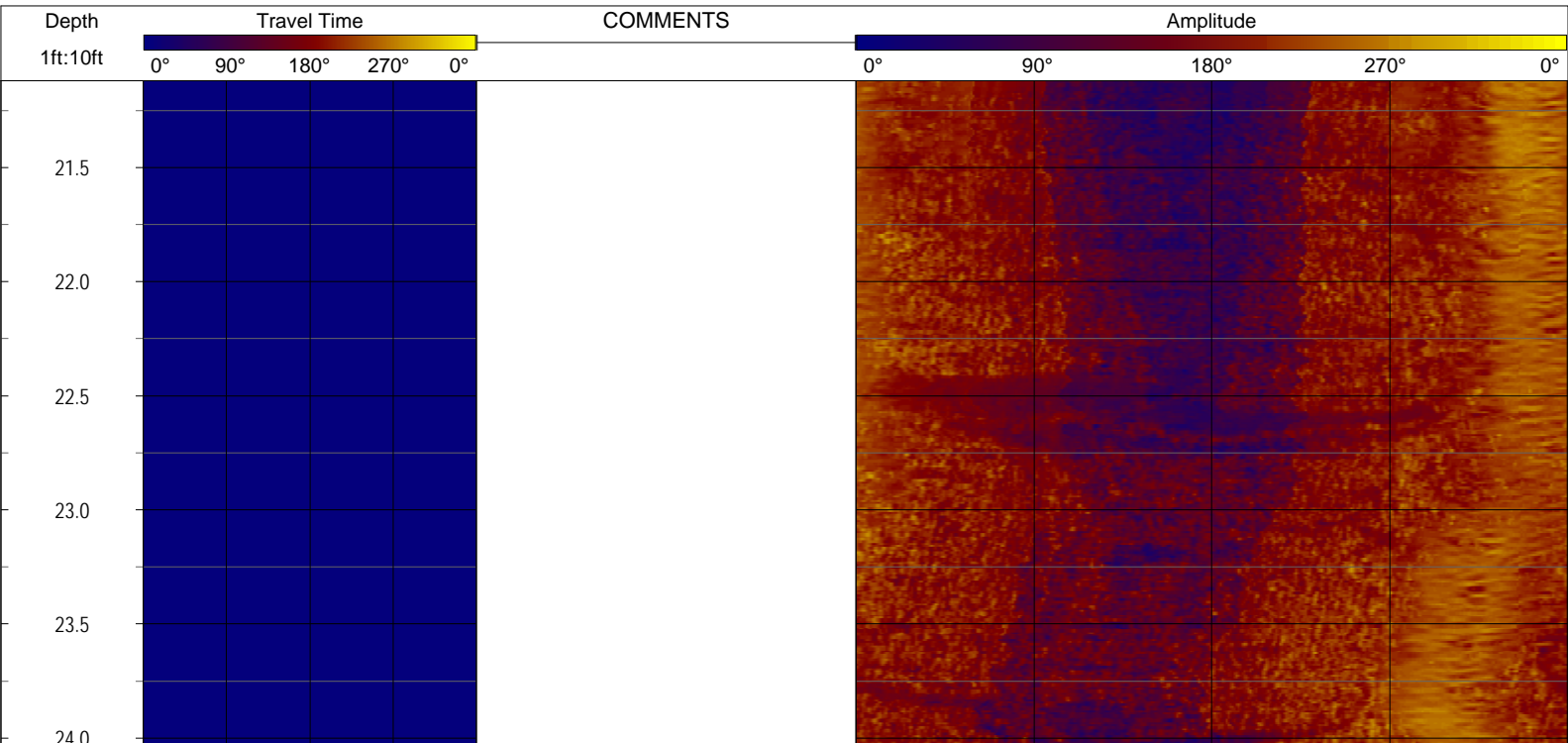
Licensed and Insured

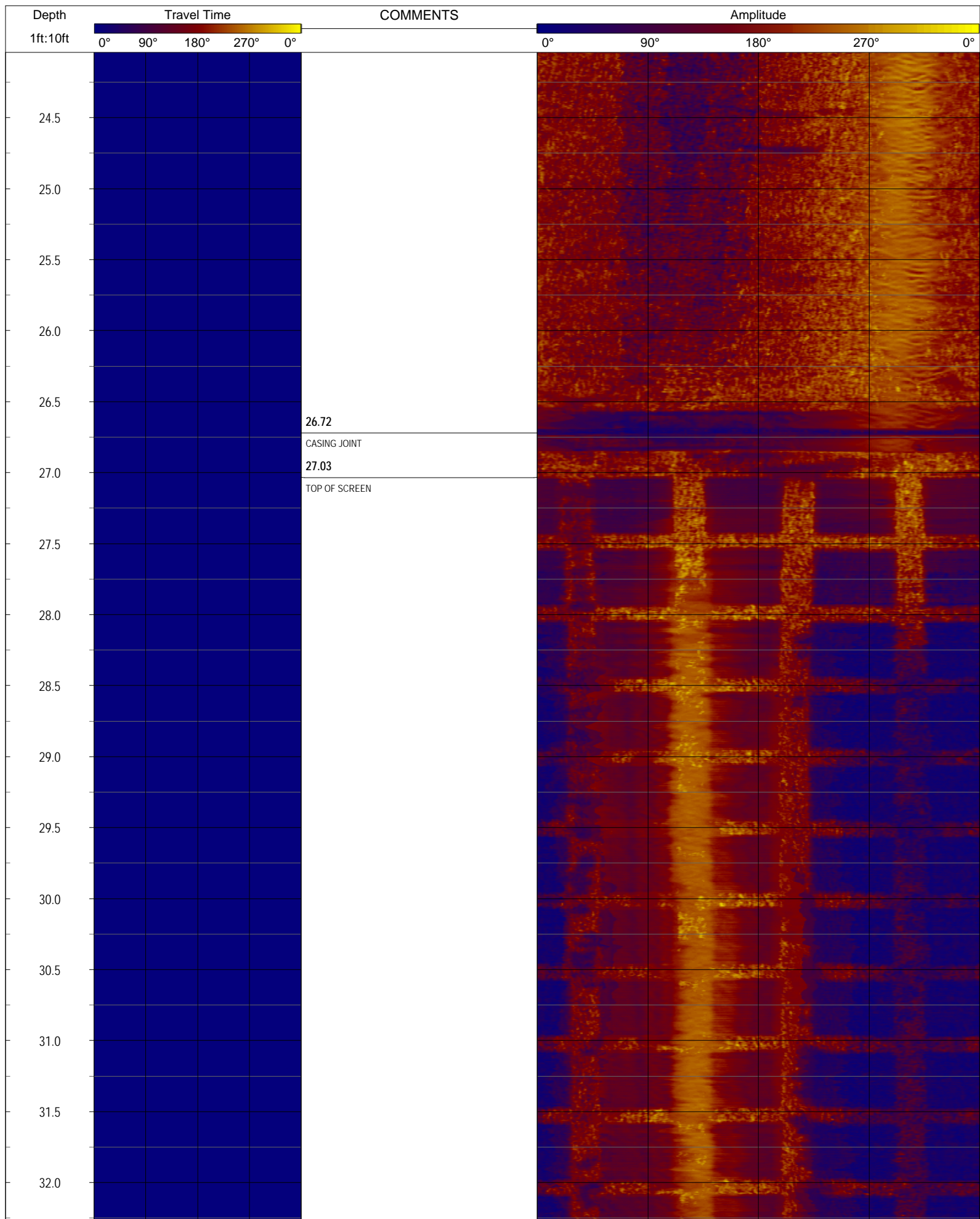
SRVC	RMBAKER LLC	COMPANY:	RMBAKER LLC
UWI	STL-287_GW1	WELL NAME:	STL-287_GW1
FLD	STL-286	FIELD:	STL-286
PROV	FLORIDA	COUNTRY:	USA
CTY	ST. LUCIE	STATE:	FL
		COUNTY:	ST. LUCIE
LOC:		ALL SERVICES:	HRAT
NOTES:			
SEC		TWP	
		RGE	
		ELEVATION:	
		COORDINATES:	272604.239 803248.385

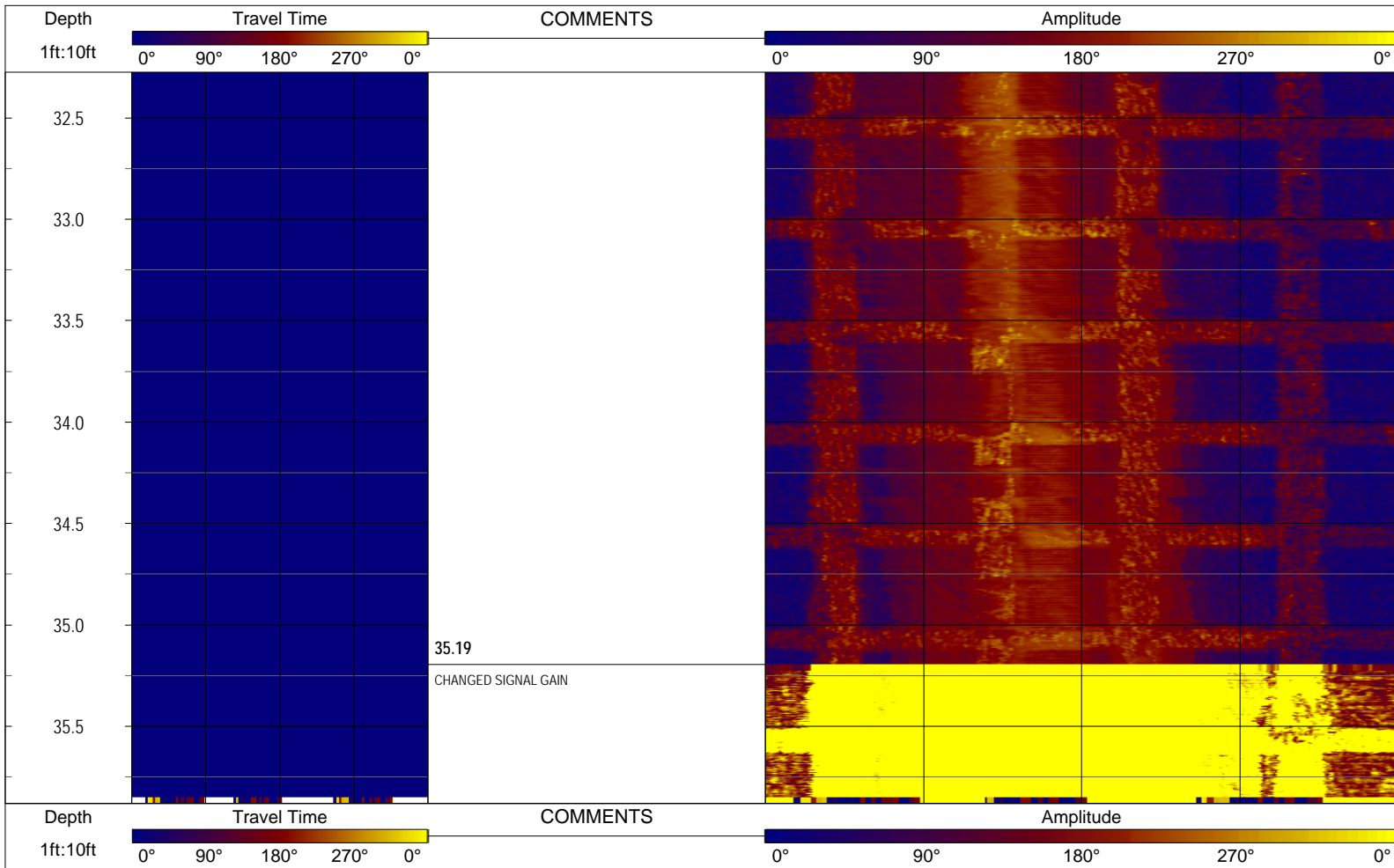
PERMANENT DATUM:
LOG MEAS. FROM: TOP OF CASING
DRILLING MEAS. FROM:

DATE	24 Jul 2012	TYPE FLUID IN HOLE	
RUN No	1	SALINITY	
TYPE LOG	HRAT	DENSITY	
DEPTH-DRILLER		LEVEL	
DEPTH-LOGGER	36	MAX. REC. TEMP.	
BTM LOGGED INTERVAL		LOGGING SPEED (FT/MIN)	2
TOP LOGGED INTERVAL		TROLLING DIRECTION	UP
DRILLER		PUMPING RATE (GPM)	
RECORDED BY	RMB		
WITNESSED BY			

BOREHOLE RECORD		CASING RECORD					
RUN NO.	BIT	FROM	TO	SIZE	MAT.	FROM	TO
				2	PVC	0	36







NOTES:

While due care has been exercised in the performance of these measurements and observations, in accordance with methodologies utilized by the general practitioner, RIMBAKER LLC can make no representations, warranties, or guarantees with respect to latent or concealed conditions that may exist, which may be beyond the detection capabilities of the methodologies used, or that may extend beyond the areas and depths surveyed.
 The geophysical well logs show subsurface conditions as they existed at the dates and locations shown, and it is not warranted that they are representative of subsurface conditions at other locations and times.
 If, at any time, different subsurface conditions from those observed are determined to be present, we must be advised and allowed to review and revise our observations if necessary.

Certificate of Authorization GB 458

END OF LOG