



X-Y CALIPER
GAMMA RAY
LOG

Company Florida Design Drilling Corp.
Well BR-24B
Field Burma Road
County Palm Beach
State Florida
Country USA

Location: Seacrest Utility Authority
8884 Burma Road
SEC J/LA Gas Services, Inc.
TYP RGE
Log Measured From G.L.
Drilling Measured From G.L.

API #: Other Services
XY/GR
DIL/SP
Elevation
K.B.
G.L.

Date 5/NOV/2014
Run Number ONE
Depth Driller 207
Depth Logger 207
Tool Joint Interval SURFACE
Open Hole Size 5.875"
Type Fluid MUD
Density / Viscosity NANA
Max. Recorded Temp. NA
Estimated Cement Top NA

Time Well Ready 09:30 11/5/2014
Time Logger on Bottom 10:45 11/5/2014
Equipment Number MYS-2
Recorded By S.Jillier/Jillier
Witnessed By J.Nixon (JLA)

Borehole Record
Run Number ONE
Bit 5.875"
From 23'
To 200'

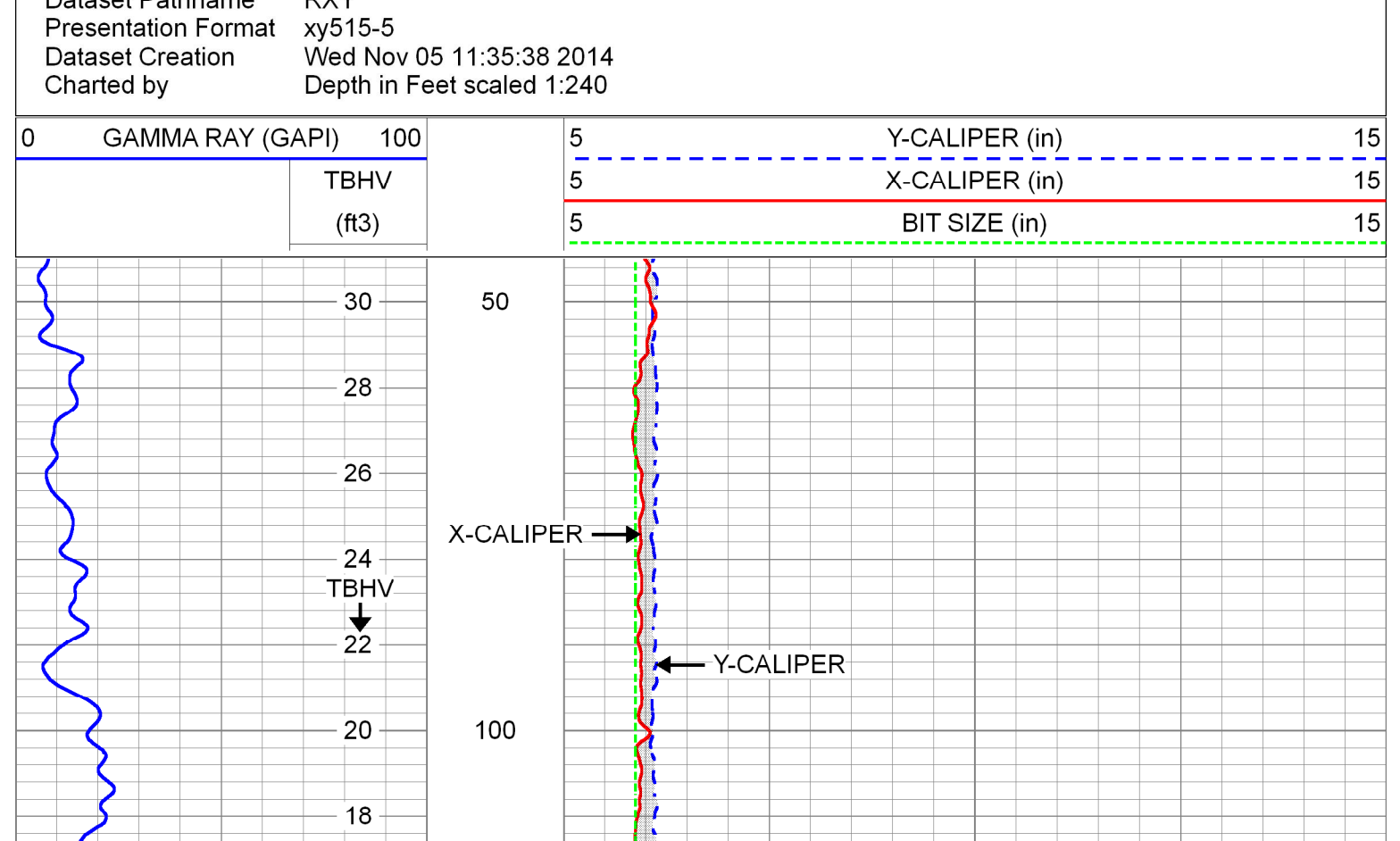
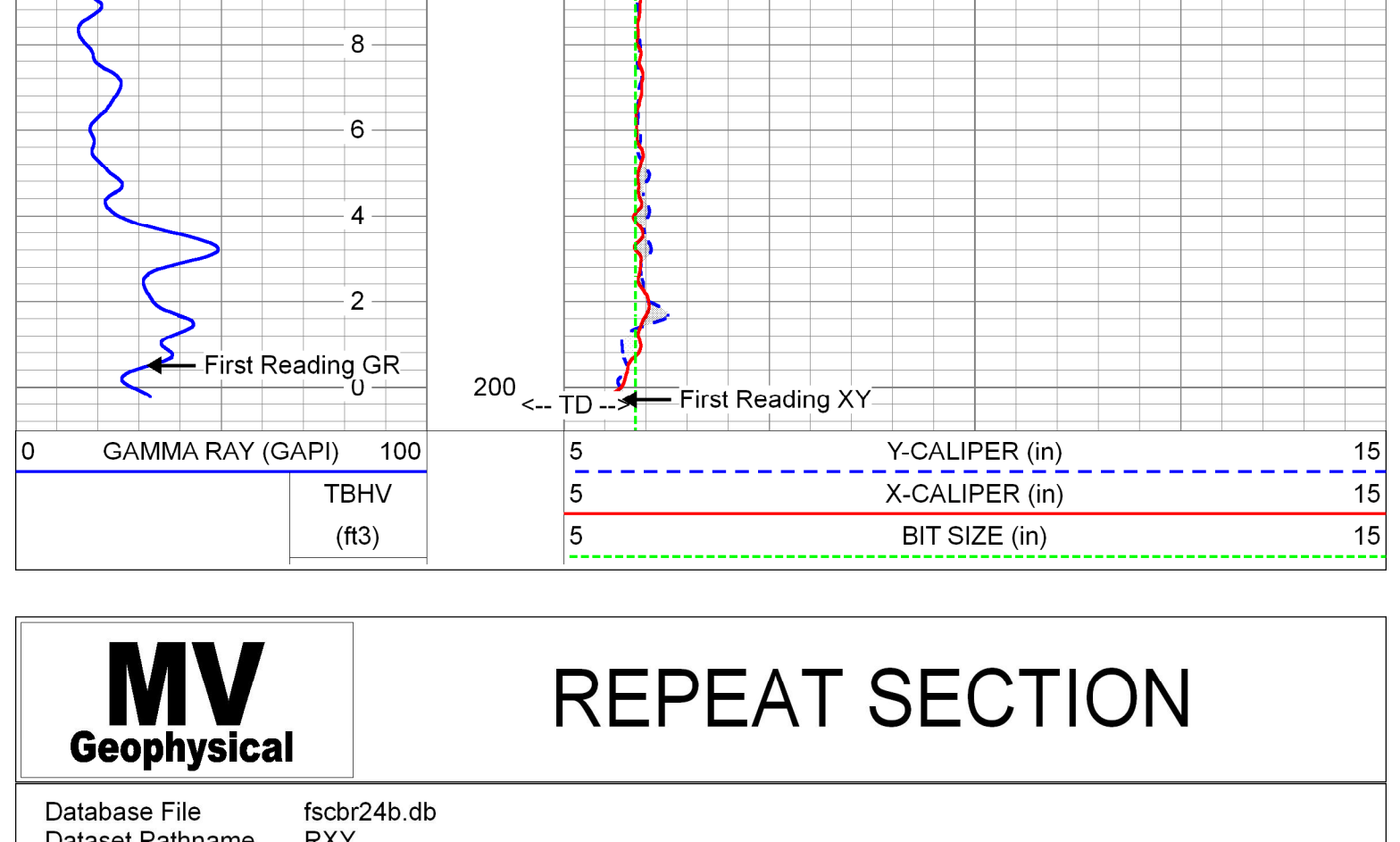
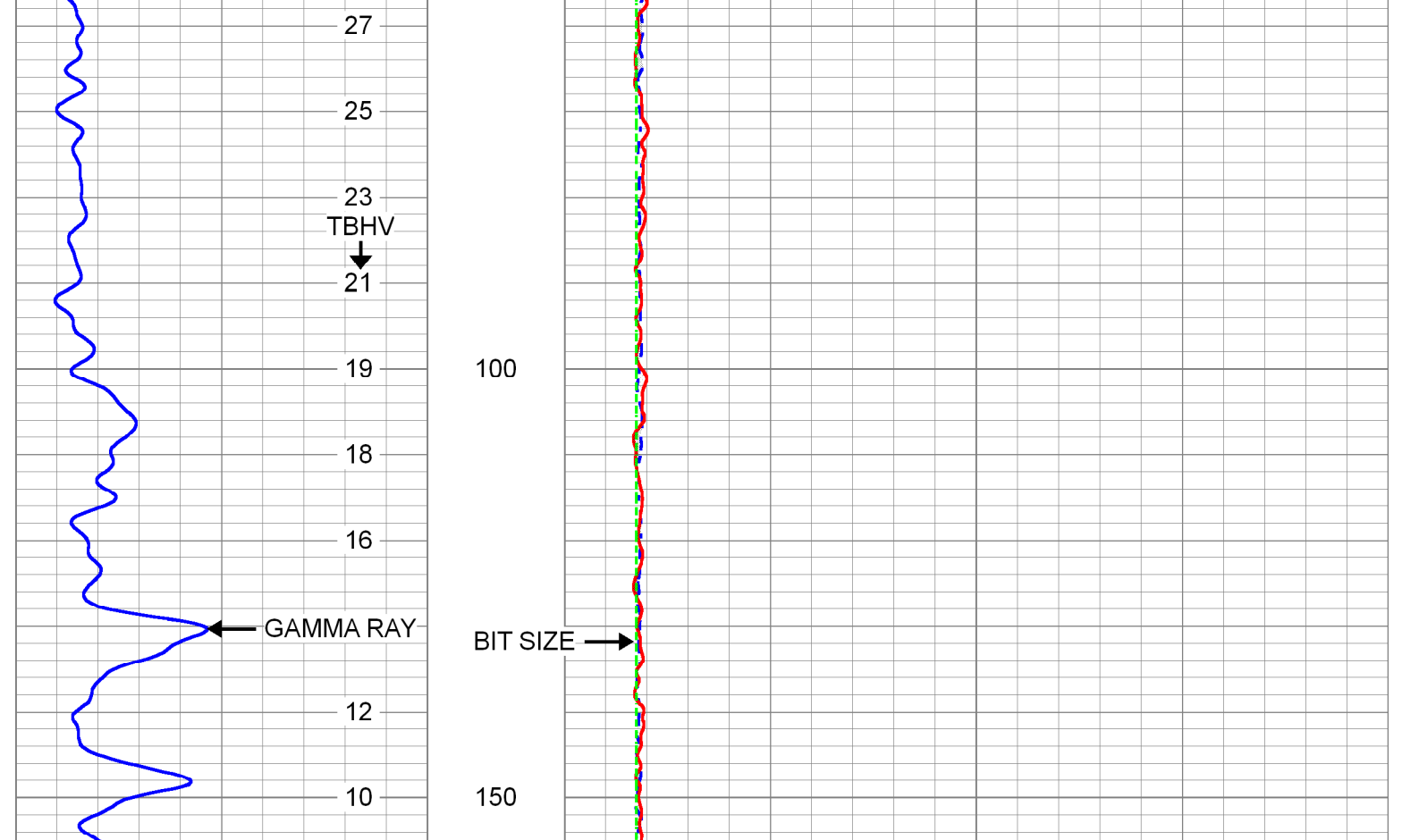
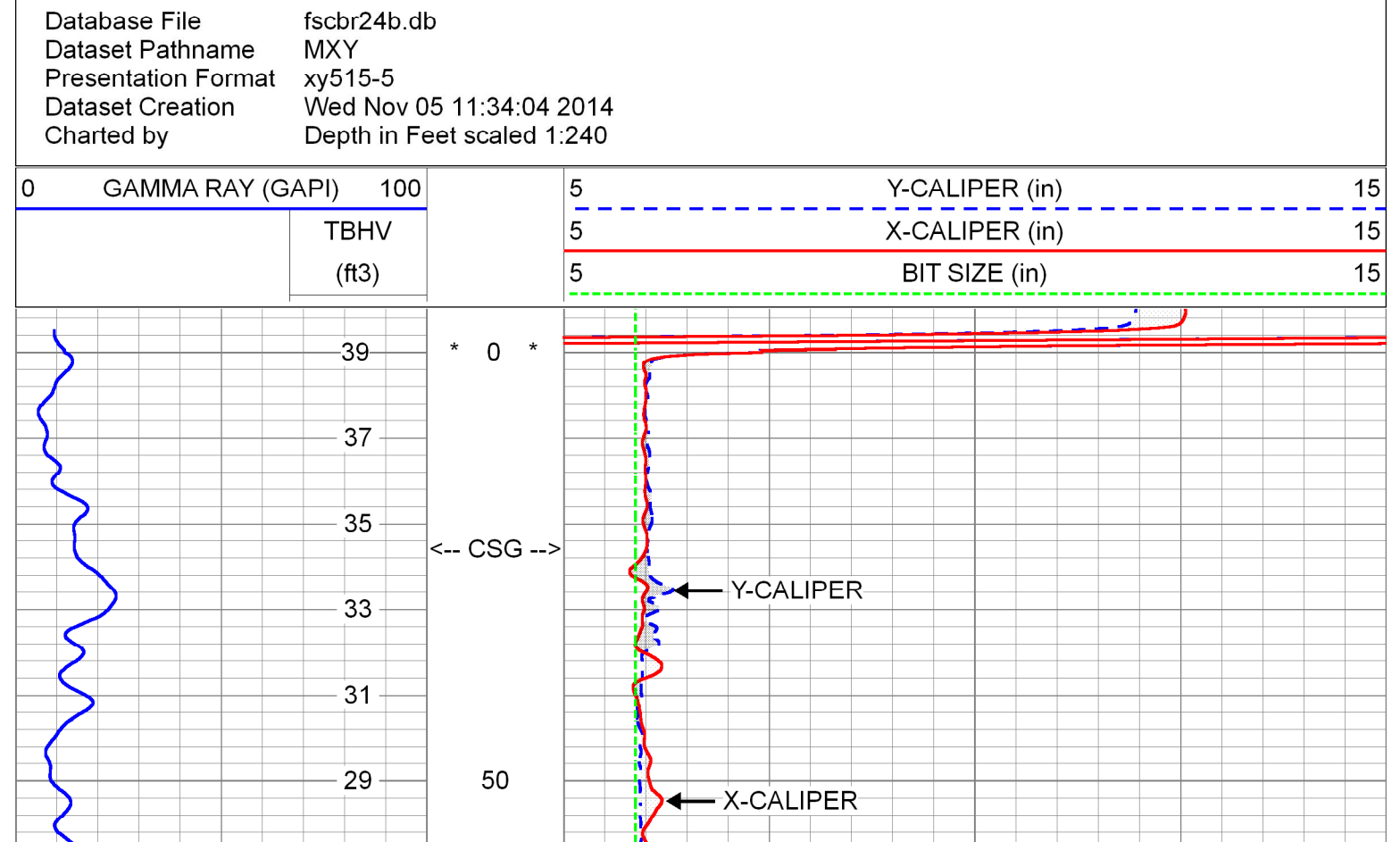
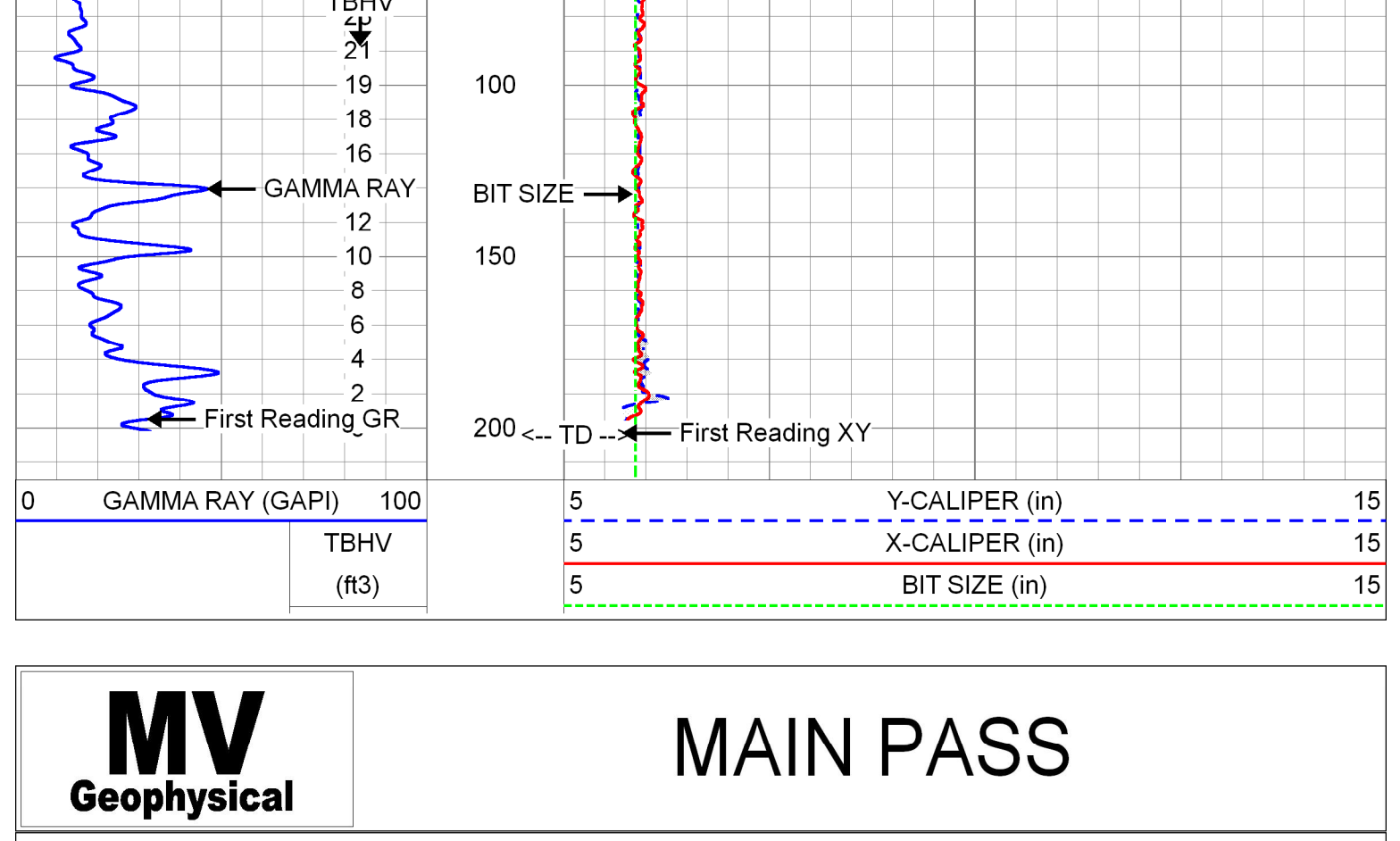
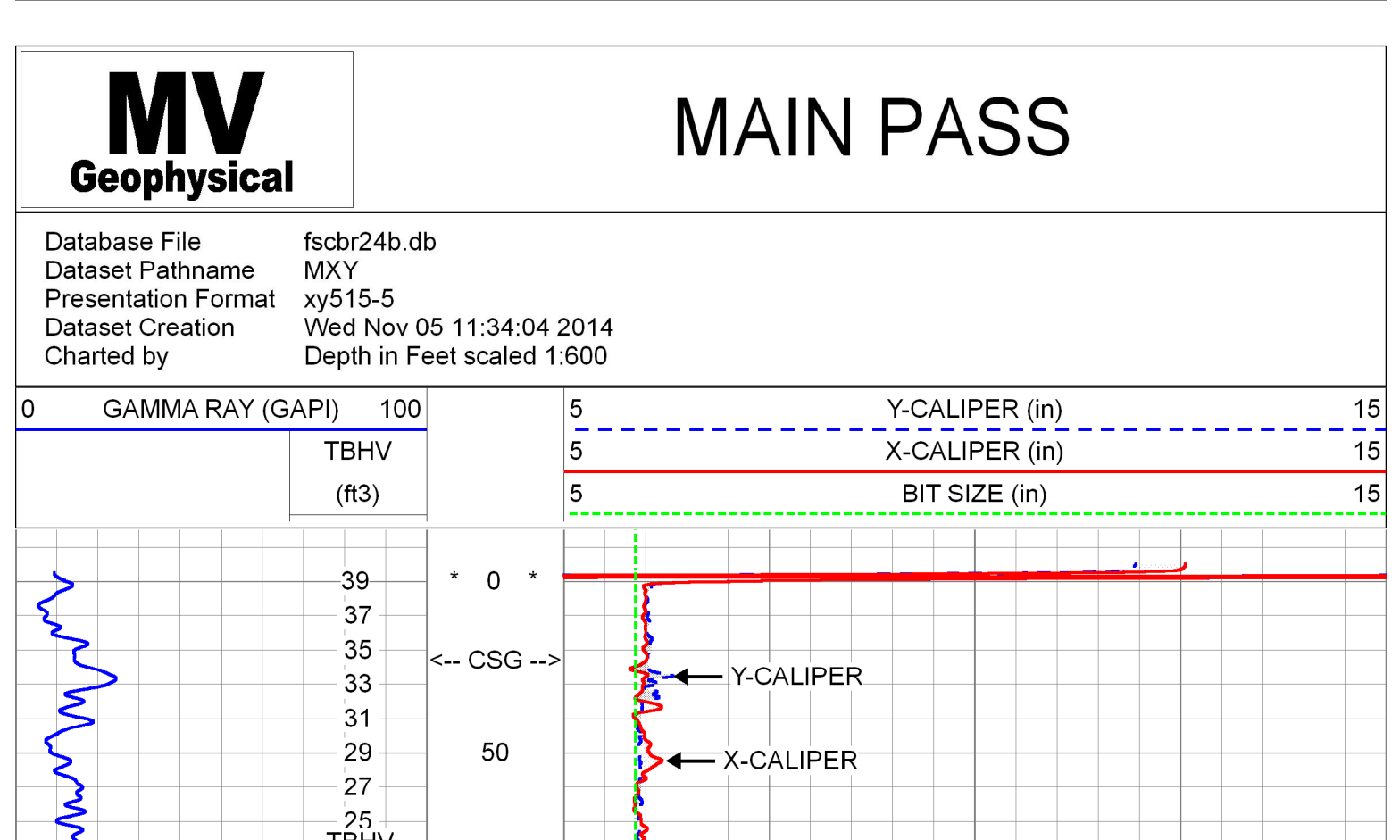
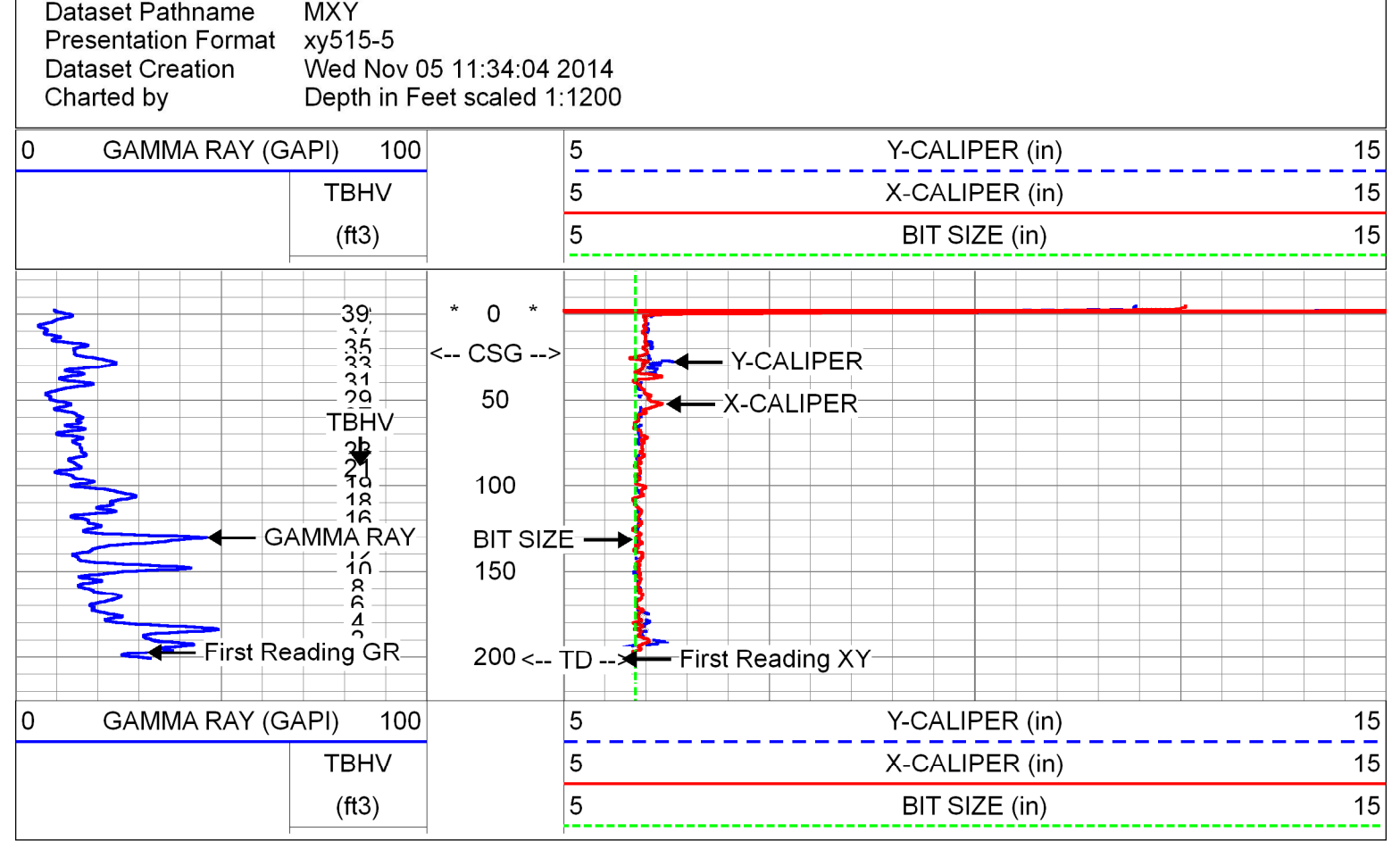
Tubing Record
J.Say (CLD)
Size 2.00"
Weight From
To

Log Record
Casing Record
Surface String
Production String
Liner
Filter No. 20114200
Synchrofas

Company Florida Design Drilling Corp.
Well BR-24B
Field Burma Road
County Palm Beach
State Florida
Country USA

All interpretations are opinions based on inferences from electrical or other measurements and we cannot and do not guarantee the accuracy or correctness of any interpretation, and we shall not, except in the case of gross or willful negligence on our part, be liable or responsible for any loss, costs, damages, or expenses incurred or sustained by anyone resulting from any interpretation made by any of our officers, agents or employees. These interpretations are also subject to our general terms and conditions set out in our current Price Schedule.

Comments
MAXIMUM ARM EXTENSION: 33"
BOREHOLE VOLUMES IN CUBIC FEET.
NO REPEAT DUE TO BOREHOLE CONDITION.
Drilling Sub-Contractor: CenterLine Drilling, Inc.



Calibration Report

Database File fscbr24b.db
Dataset Pathname pass6
Dataset Creation Wed Nov 05 10:47:57 2014

XY Caliper Calibration Report

Serial Number:	01S		
Tool Model:	XYCS		
Performed:	Wed Nov 05 10:54:32 2014		
Small Ring:	6 in		
Large Ring:	33 in		
	X Caliper	Y Caliper	
Reading with Small Ring:	561	582.5	cps
Reading with Large Ring:	1136	1085	cps
Gain:	0.0469565	0.0537313	
Offset:	-20.3426	-25.2985	

Gamma Ray Calibration Report

Serial Number:	01	
Tool Model:	GROH	
Performed:	Wed Nov 05 10:46:30 2014	
Calibrator Value:	120.0	GAPI
Background Reading:	12.4	cps
Calibrator Reading:	131.6	cps
Sensitivity:	1.0074	GAPI/cps

Sensor	Offset (ft)	Schematic	Description	Length (ft)	O.D. (in)	Weight (lb)
GR	5.00		GR-GROH (01)	2.75	3.50	40.00
YCAL	0.50		XYC-XYCS (01S)	6.60	3.50	110.00
XCAL	0.50					

Dataset: fscbr24b.db: field/well/run/1/pass6
Total length: 9.35 ft
Total weight: 150.00 lb
O.D.: 3.50 in



DUAL INDUCTION LL3/SP LOG

Company	Florida Design Drilling Corp.	Country	USA
Well	BR-24B	Field	Burma Road
County	Palm Beach	State	Florida
Location:	Seacoast Utility Authority Burma Road Wellfield Expansion 9684 Burma Road - JLA Geosciences, Inc. SEC TWP - JLA RGE	APR #:	
Permanent Datum	G.L.	Elevation	
Log Measured From	G.L.	Elevation	
Drilling Measured From	G.L.	Elevation	
Date	5-NOV-2014	Other Services	XV/GR DL/SP
Run Number	ONE		
Depth Driller	ONE		
Depth Logger	200		
Bottom Logger Interval	202		
Tool Joint Interval	202		
Open Hole Size	SURFACE		
Type Fluid	MUD		
Density / Viscosity	NNNA		
Max. Recorded Temp.	NNNA		
Estimated Cement Top	NA		
Time Well Ready	09:30 11/9/2014		
Time Logger on Bottom	10:15 11/9/2014		
Equipment Number	FW-551		
Recorded By	S. Miller/C. Miller		
Witnessed By	J. Nixon (JLA)		
Run Number	ONE	Size	23"
Bit	5.675"	Weight	200'
Run Date	5/6/2014	From	200'
Run Time	2:35	To	
Casing Record	Size	Wafer	Top
Surface String	6" PVC	6" ID	SURFACE
Production String	Temporary	23"	Bottom
Line	2014290	3x/offsets	fscbr24b.db
Printer No.			* FIELD PRINT *

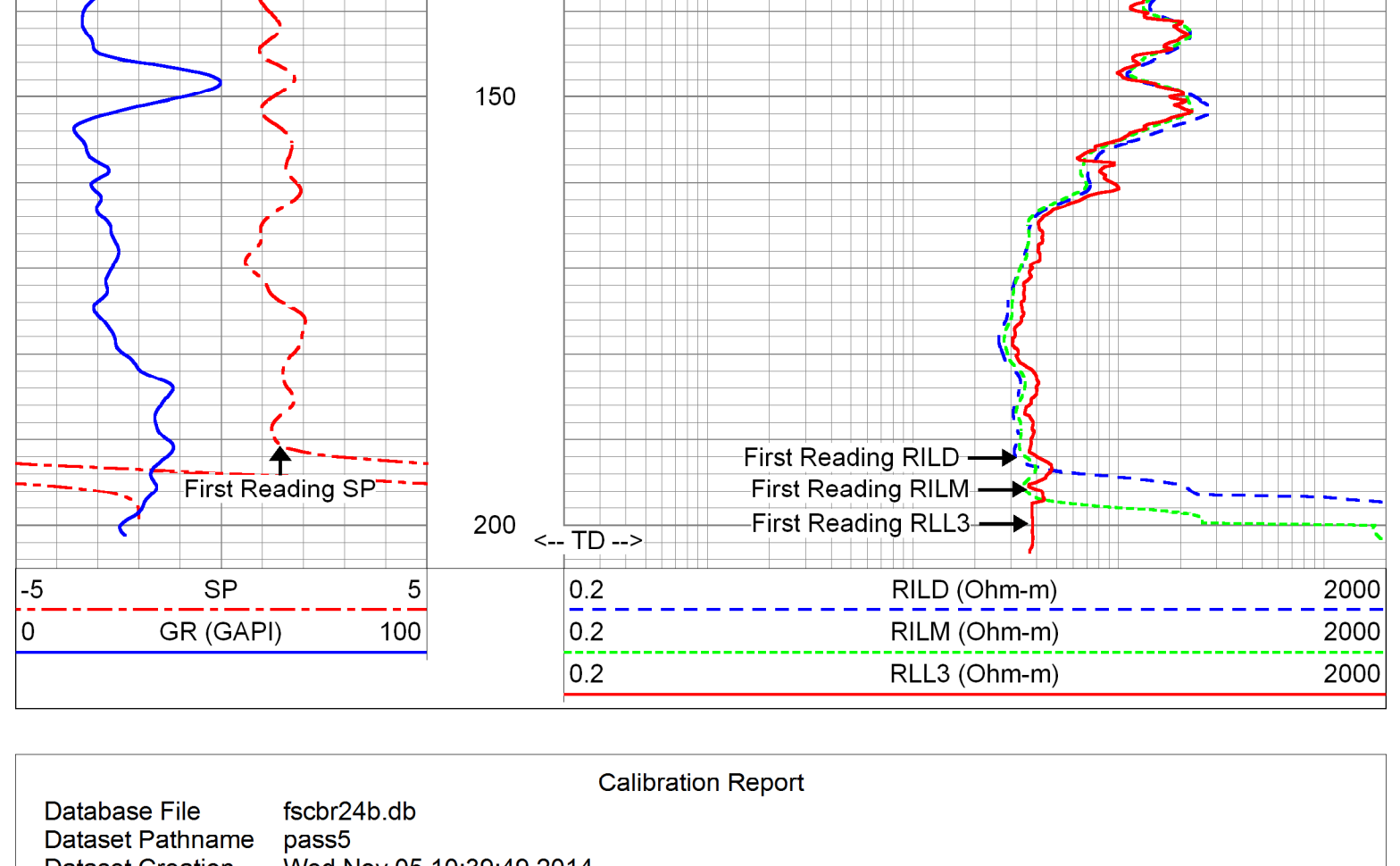
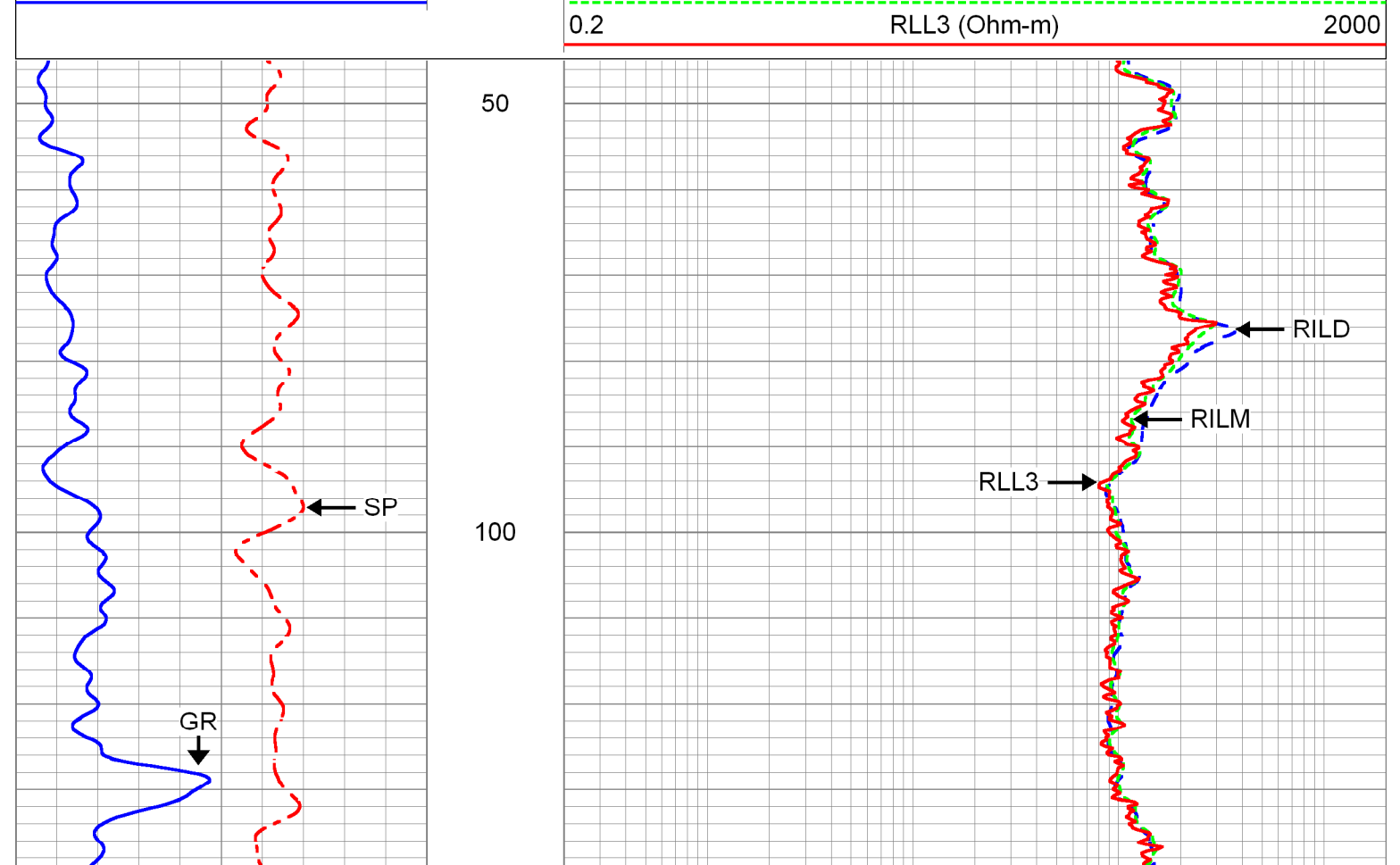
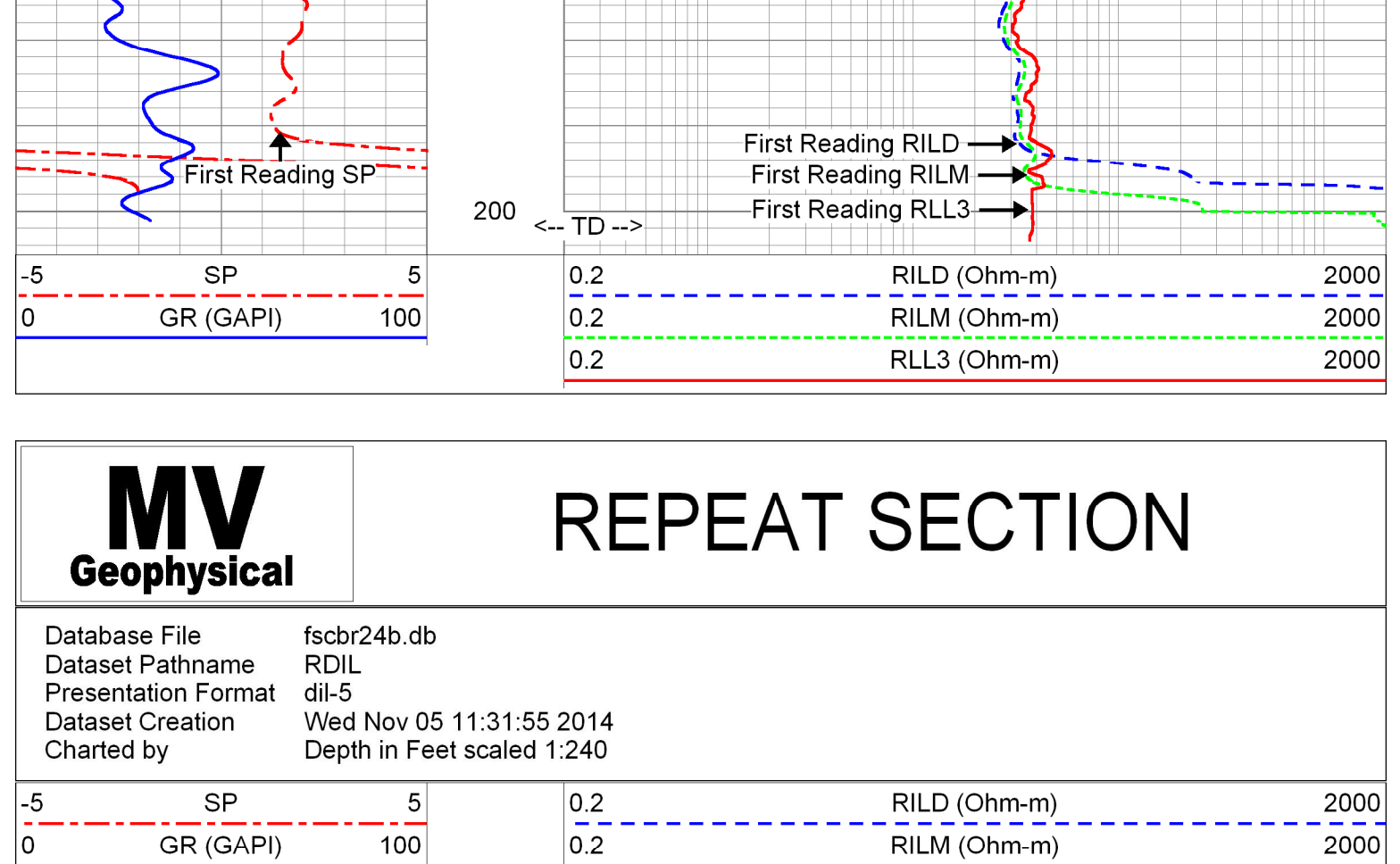
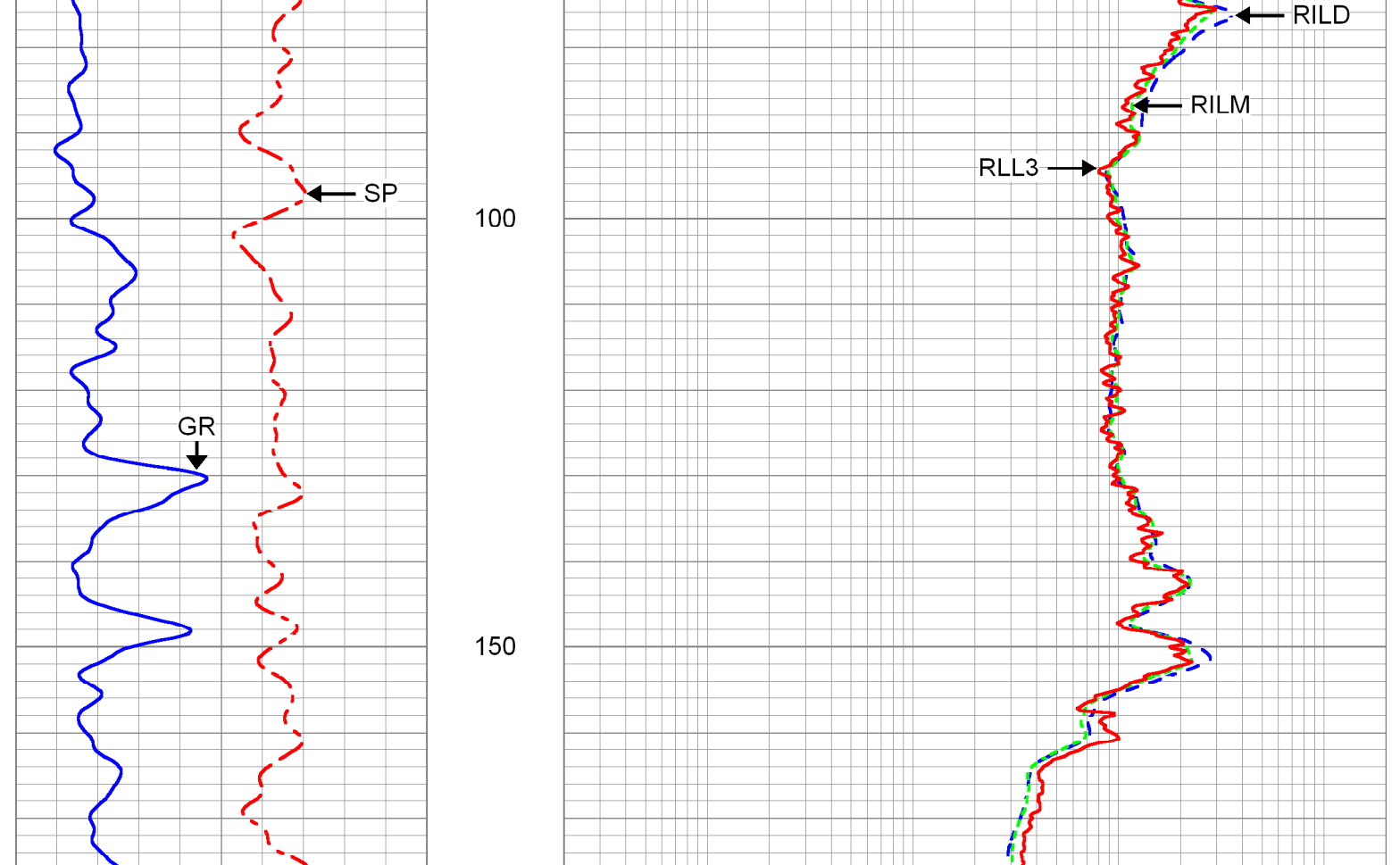
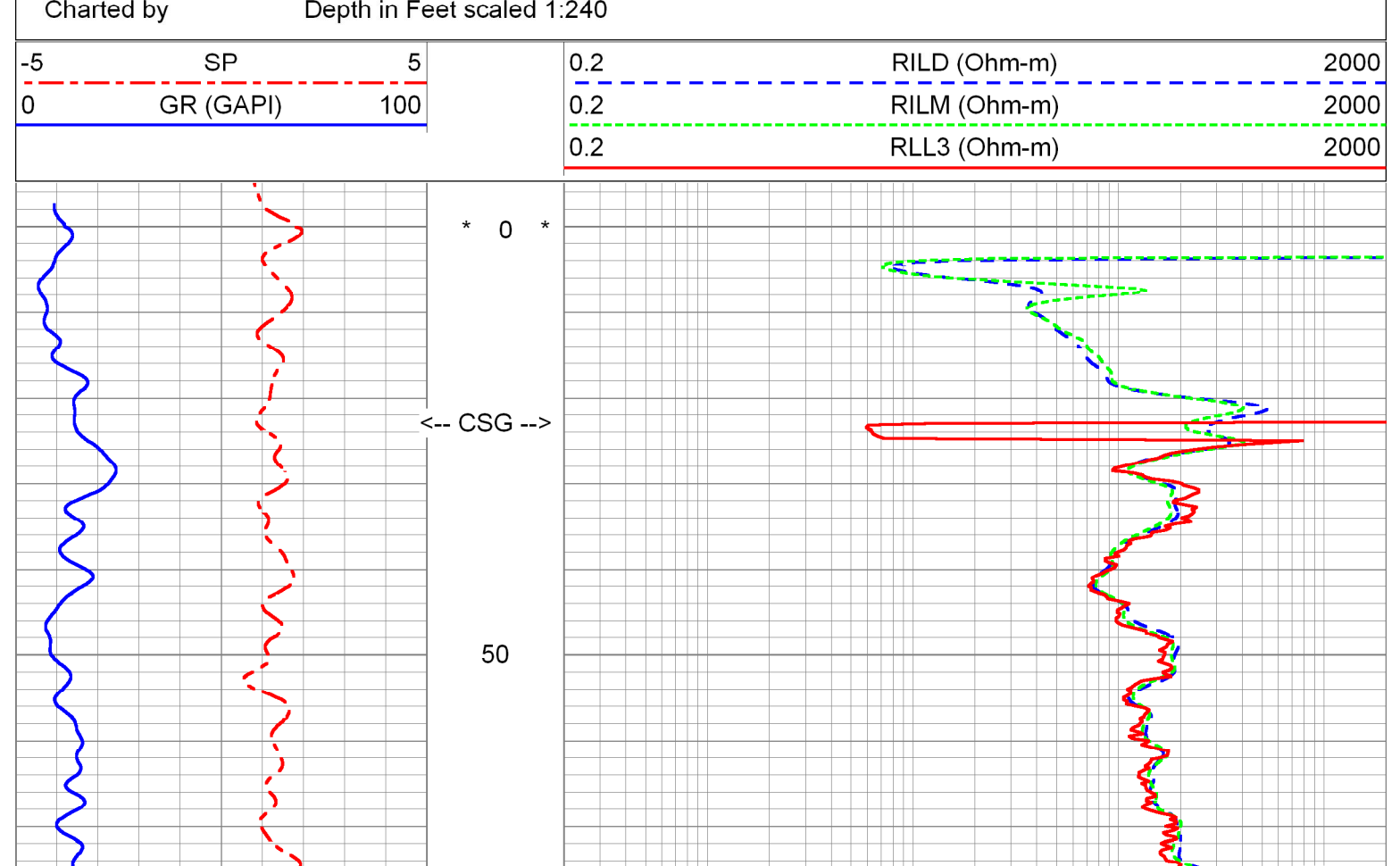
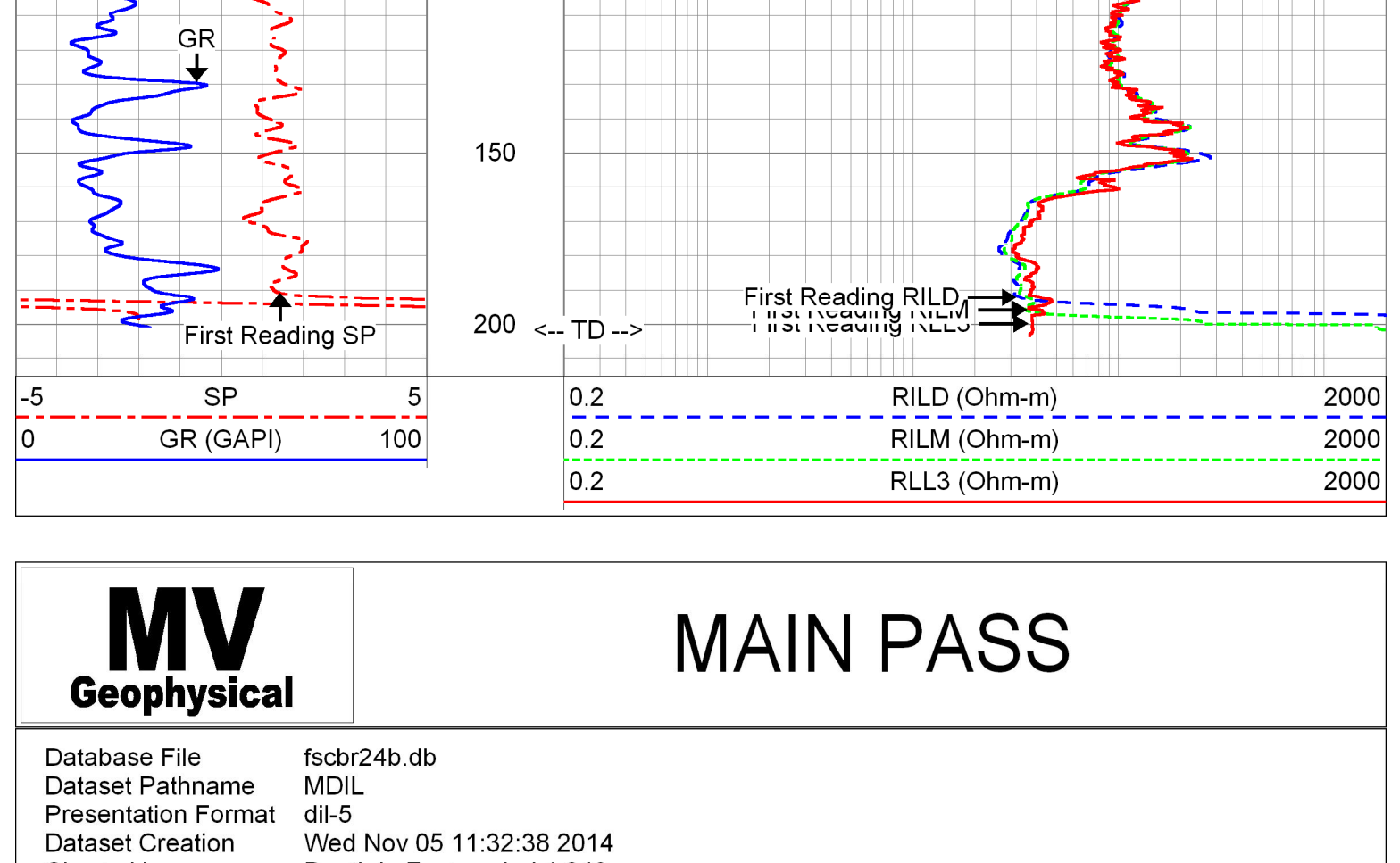
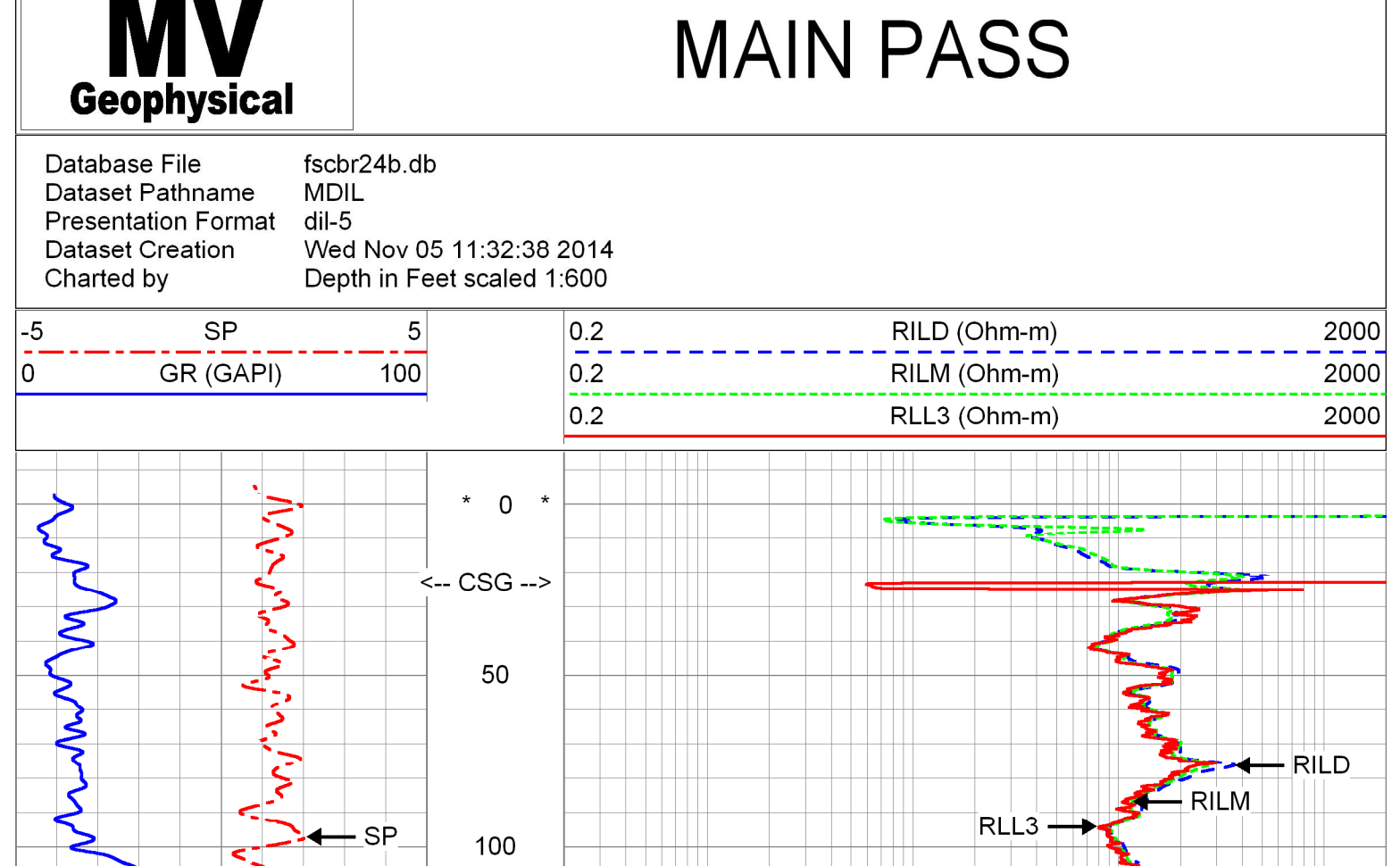
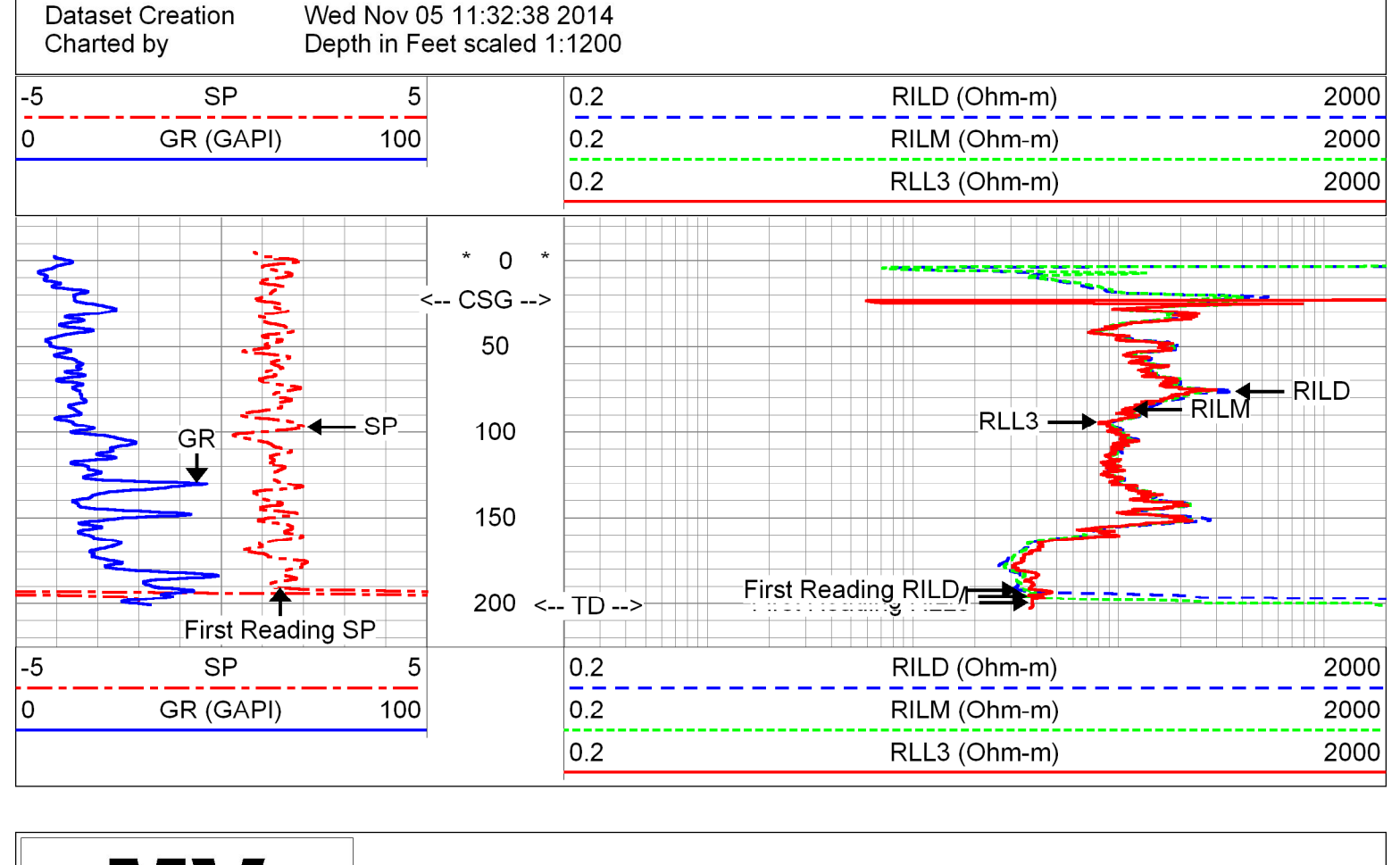
<<< Fold Here >>>

All interpretations are opinions based on inferences from electrical or other measurements and are not guaranteed to be accurate or correct. We shall not be liable or responsible for any loss, costs, damages, or expenses incurred or sustained by anyone resulting from any interpretation made by any of our officers, agents or employees. These interpretations are also subject to our general terms and conditions set out in our current Price Schedule.

Comments

Rm=7.554 ohm-m @ 78.3 deg

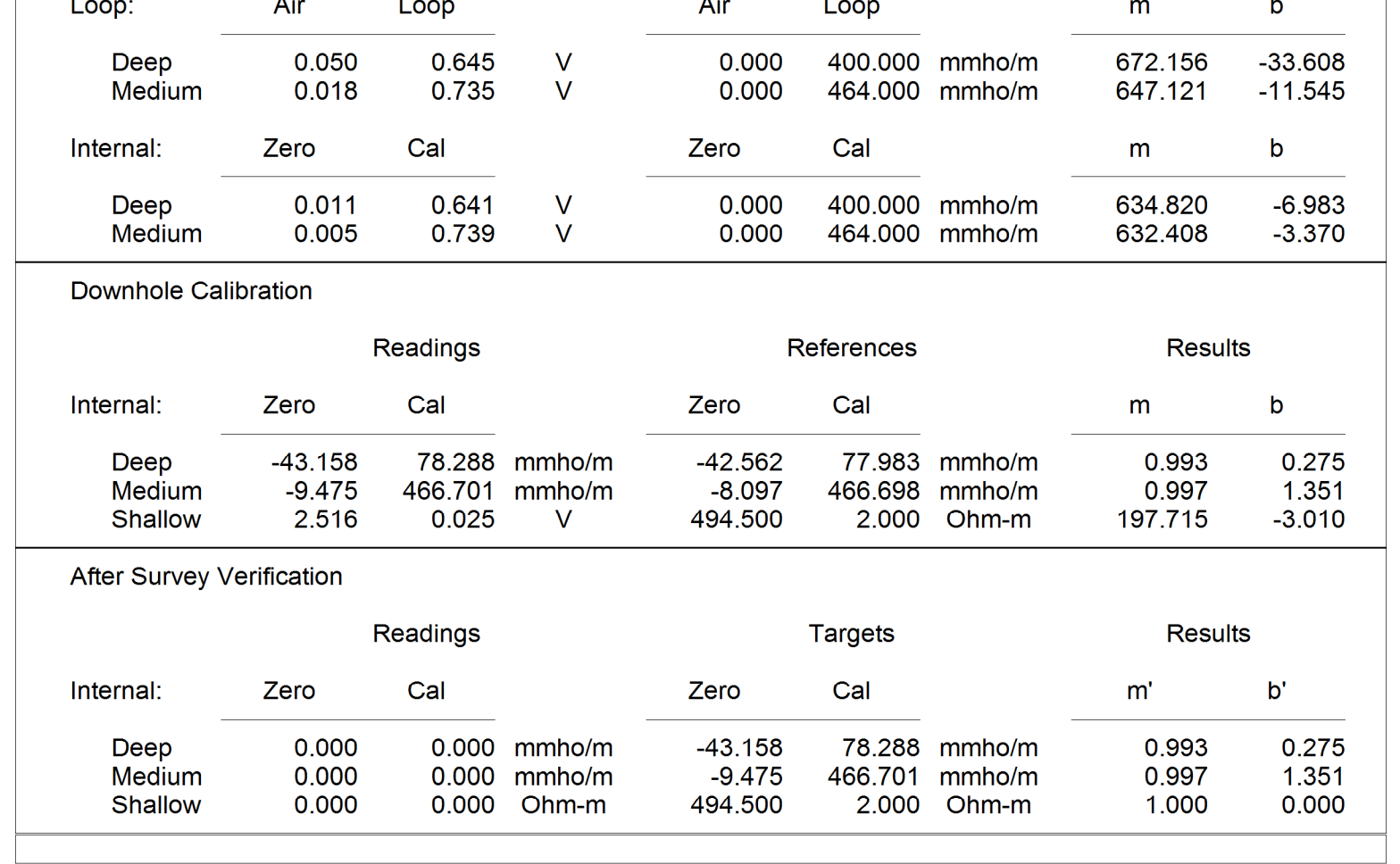
Drilling Sub-Contractor: CenterLine Drilling, Inc.



REPEAT SECTION

Database File: fscbr24b.db
 Dataset Pathname: RDIL
 Presentation Format: dii-5
 Dataset Creation: Wed Nov 05 11:31:55 2014
 Charted by: Depth in Feet scaled 1:240

-5	SP	5	0.2	RILD (Ohm-m)	2000
0	GR (GAP)	100	0.2	RILM (Ohm-m)	2000
			0.2	RLL3 (Ohm-m)	2000



Calibration Report

Database File: fscbr24b.db
 Dataset Pathname: pass5
 Dataset Creation: Wed Nov 05 10:39:49 2014

Dual Induction Calibration Report

Serial-Model: 5390-R
 Surface Cal Performed: Fri Oct 31 12:11:43 2014
 Downhole Cal Performed: Fri Oct 31 12:11:54 2014
 After Survey Verification Performed: Wed Apr 21 11:04:55 2010

Surface Calibration

Loop:	Readings			References		Results	
	Air	Loop	V	Air	Loop	m	b
Deep	0.050	0.645	V	0.000	400.000	672.156	-33.608
Medium	0.018	0.735	V	0.000	464.000	647.121	-11.545

Internal Calibration

Internal:	Readings			References		Results	
	Zero	Cal	V	Zero	Cal	m	b
Deep	0.011	0.641	V	0.000	400.000	634.820	-6.983
Medium	0.005	0.739	V	0.000	464.000	632.408	-3.370

Downhole Calibration

Internal:	Readings			References		Results	
	Zero	Cal	V	Zero	Cal	m	b
Deep	-43.158	78.288	mmho/m	-42.562	77.983	0.993	0.275
Medium	-9.475	466.701	mmho/m	-8.097	466.698	0.997	1.351
Shallow	2.516	0.025	V	494.500	2.000	197.715	-3.010

After Survey Verification

Internal:	Readings			Targets		Results	
	Zero	Cal	V	Zero	Cal	m'	b'
Deep	0.000	0.000	mmho/m	-43.158	78.288	0.993	0.275
Medium	0.000	0.000	mmho/m	-9.475	466.701	0.997	1.351
Shallow	0.000	0.000	Ohm-m	494.500	2.000	1.000	0.000

Sensor	Offset (ft)	Schematic	Description	Length (ft)	O.D. (in)	Weight (lb)
SP	10.60		R (5390)	20.90	4.00	345.00
CILD	10.60					
CILM	6.80					
RLL3	1.70					

Dataset: fscbr24b.db:field/well/run1/pass5
 Total length: 20.90 ft
 Total weight: 345.00 lb
 O.D.: 4.00 in