

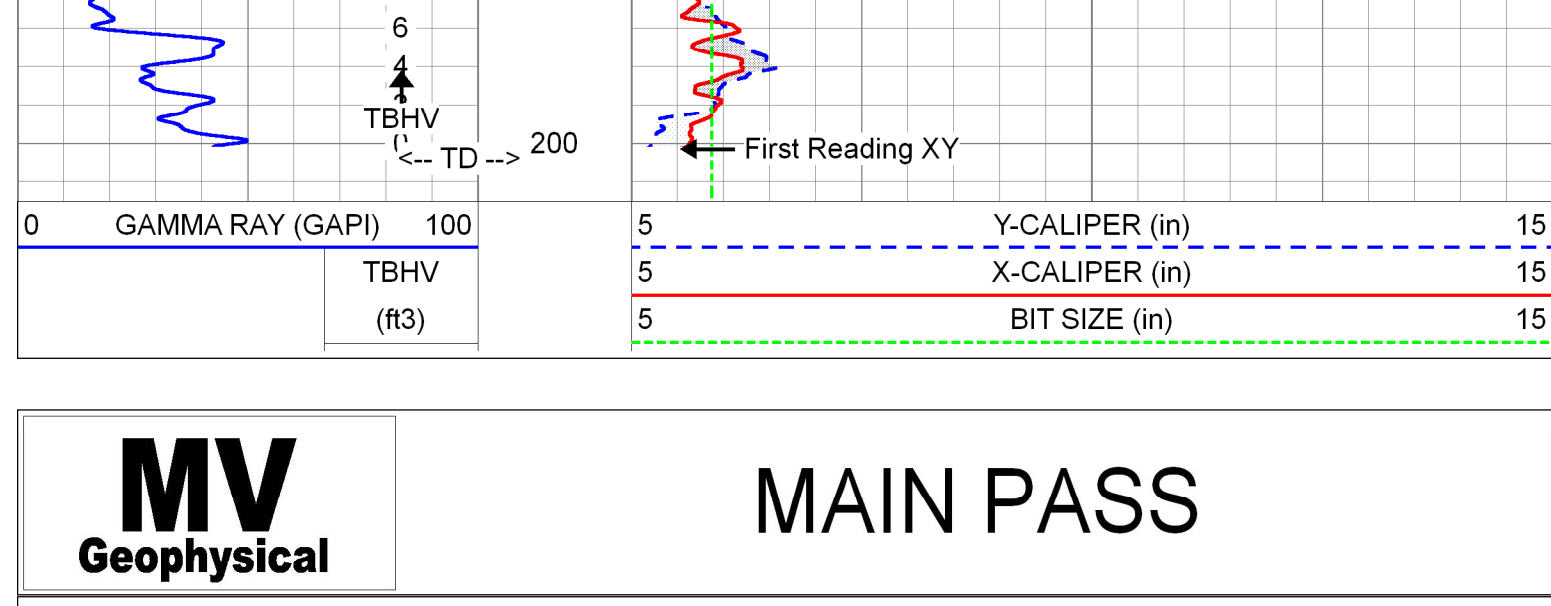
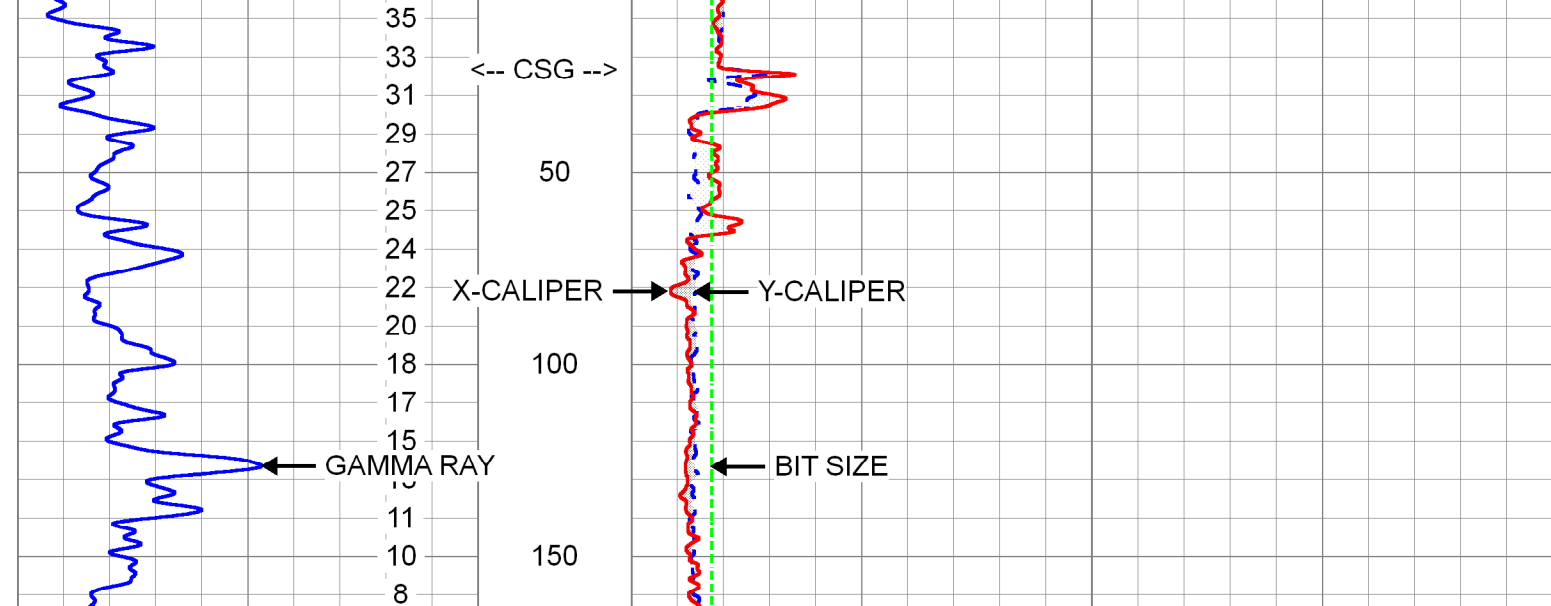
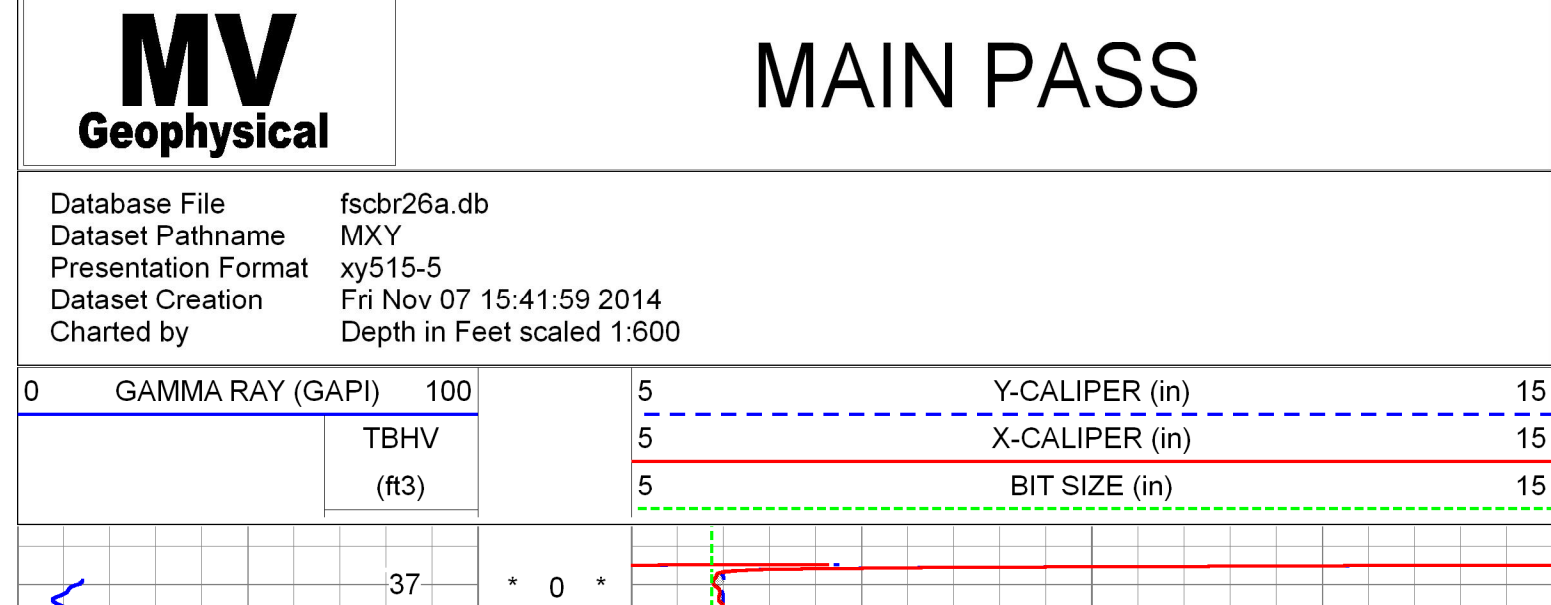
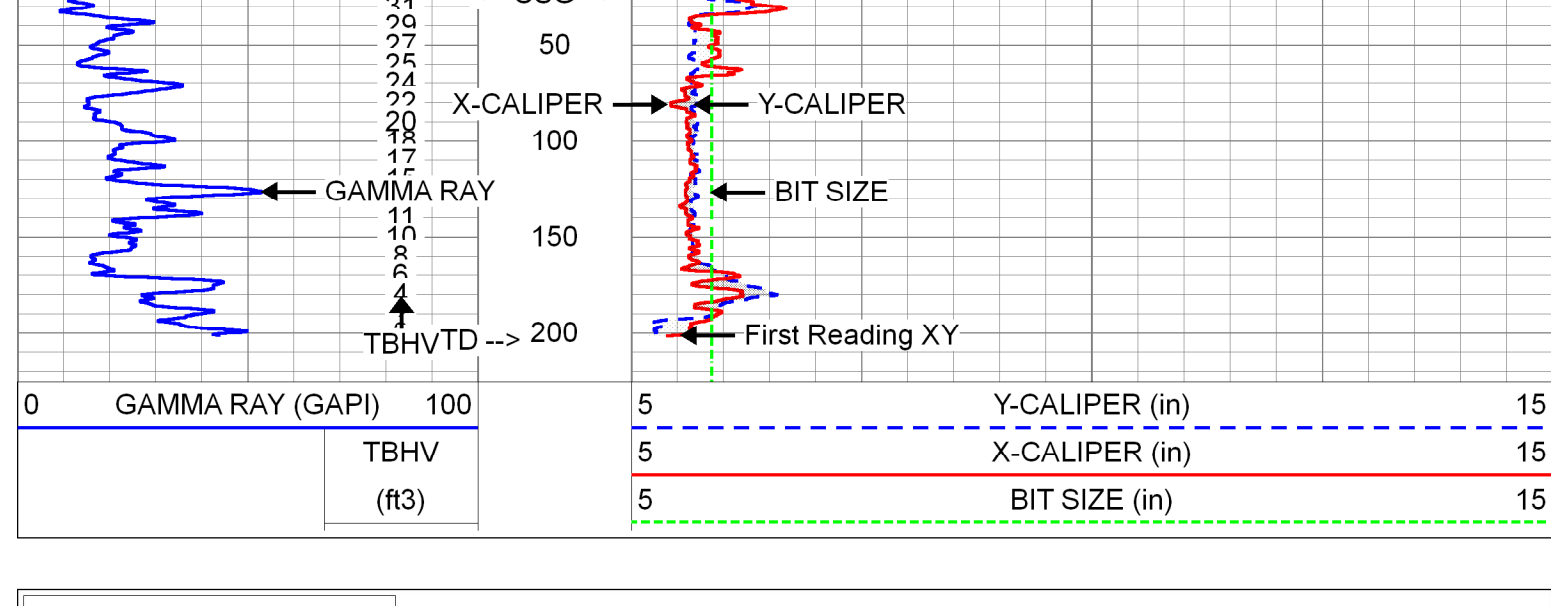
<b>MV Geophysical</b>		<b>X-Y CALIPER GAMMA RAY LOG</b>	
Company: Florida Design Drilling Corp.			
Well: BR-26A			
Field: Burma Road			
County: Palm Beach			
State: Florida			
Country: USA			
Location:		API #:	
Seacrest Utility Authority		8884 Burma Road	
8884 Burma Road		Wellfield Expansion	
SEC		JLA Gas Services, Inc.	
TYP		FGE	
Log Measurement From		Elevation	
G.L.		G.L.	
Drilling Measured From		K.B. Elevation	
G.L.		G.L.	
Date		11-NOV-2014	
Run Number		0NE5-	
Depth Logger		207	
Eaton Log Interval		2'0"	
Open Hole Size		5.875"	
Type Fluid		MUD	
Density / Viscosity		NANA	
Max. Recorded Temp.		NANA	
Estimated Cement Top		NA	
Time Well Ready		10:00 11/11/2014	
Time Logger on Bottom		12:00 11/11/2014	
Equipment Number		MUS-15	
Recorded By		S. Miller / J. Miller	
Witnessed By		J. Friedrichs (JLA)	
Borehole Record		J.Say / (JLD)	
Run Number		ONE	
Bit		5.875"	
From		23'	
To		200'	
Weight		From	
Tubing Record		To	
Size		200'	
Vigil		6" ID	
Surface String		SURFACE	
Production String		25"	
Line		3x30lb	
Date		2014/2/4	
Liner		3x30lb	

<<< Fold Here >>>

All interpretations are opinions based on inferences from electrical or other measurements and we cannot and do not guarantee the accuracy or correctness of any interpretation, and we shall not, except in the case of gross or willful negligence on our part, be liable or responsible for any loss, costs, damages, or expenses incurred or sustained by anyone resulting from any interpretation made by any of our officers, agents or employees. These interpretations are also subject to our general terms and conditions set out in our current Price Schedule.

**Comments**

MAXIMUM ARM EXTENSION: 33"  
BOREHOLE VOLUMES IN CUBIC FEET.  
Drilling Sub-Contractor: CenterLine Drilling, Inc.



**Calibration Report**

Database File: fschr26a.db  
Dataset Pathname: pass11  
Dataset Creation: Tue Nov 11 12:18:28 2014

**XY Caliper Calibration Report**

Serial Number: 01S  
Tool Model: XYCS  
Performed: Tue Nov 11 12:24:46 2014

Small Ring:	6	in
Large Ring:	33	in

	X Caliper	Y Caliper	
Reading with Small Ring:	568.4	580	cps
Reading with Large Ring:	1119	1064	cps
Gain:	0.0490374	0.0557851	
Offset:	-21.8729	-26.3554	

**Gamma Ray Calibration Report**

Serial Number: 01  
Tool Model: GROH  
Performed: Tue Nov 11 12:11:13 2014

Calibrator Value:	120.0	GAPI
Background Reading:	11.6	cps
Calibrator Reading:	131.0	cps
Sensitivity:	1.0047	GAPI/cps

Sensor	Offset (ft)	Schematic	Description	Length (ft)	O.D. (in)	Weight (lb)
GR	5.00		GR-GROH (01)	2.75	3.50	40.00
YCAL	0.50		XYC-XYCS (01S)	6.60	3.50	110.00
XCAL	0.50					

Dataset: fschr24b.db: field/well/run1/pass6  
Total length: 9.35 ft  
Total weight: 150.00 lb  
O.D.: 3.50 in

<b>MV Geophysical</b>		Company: Florida Design Drilling Corp.	
		Well: BR-26A	
		Field: Burma Road	
		County: Palm Beach	
		State: Florida	
		Country: USA	

Company	Florida Design Drilling Corp.	Country	USA
Well	BR-26A	Field	Burma Road
County	Palm Beach	State	Florida
Date	11-NOV-2014	Location	Seacoast Utility Authority 8684 Burma Road - JLA Geosciences, Inc.
Run Number	ONE-B	APL #	
Depth (m)	200	Permanent Datum	G.L.
Bottom (m)	202	Log Measured From	G.L.
Top Log Interval	25	Elevation	
Open Hole Size	5.875"	K/B	G.L.
Type Fluid	MUD	D.F.	G.L.
Density / Viscosity	NA/NA		
Max Recorded Temp	NA		
Estimated Cement Top	NA		
Time Lag on Bottom	1000 1/11/2014		
Equipment Number	MV/SS-1		
Location	Fort Myers		
Recorded By	S. Miller/C. Miller		
Witnessed By	J. Friedrichs (JLA)		
Run Number	Borehole Record		
Run ONE	5.875"	To	200'
Weight	23	From	
Size	6" FWC		
Temp	Temporary		
Production String			
Line	2014204		

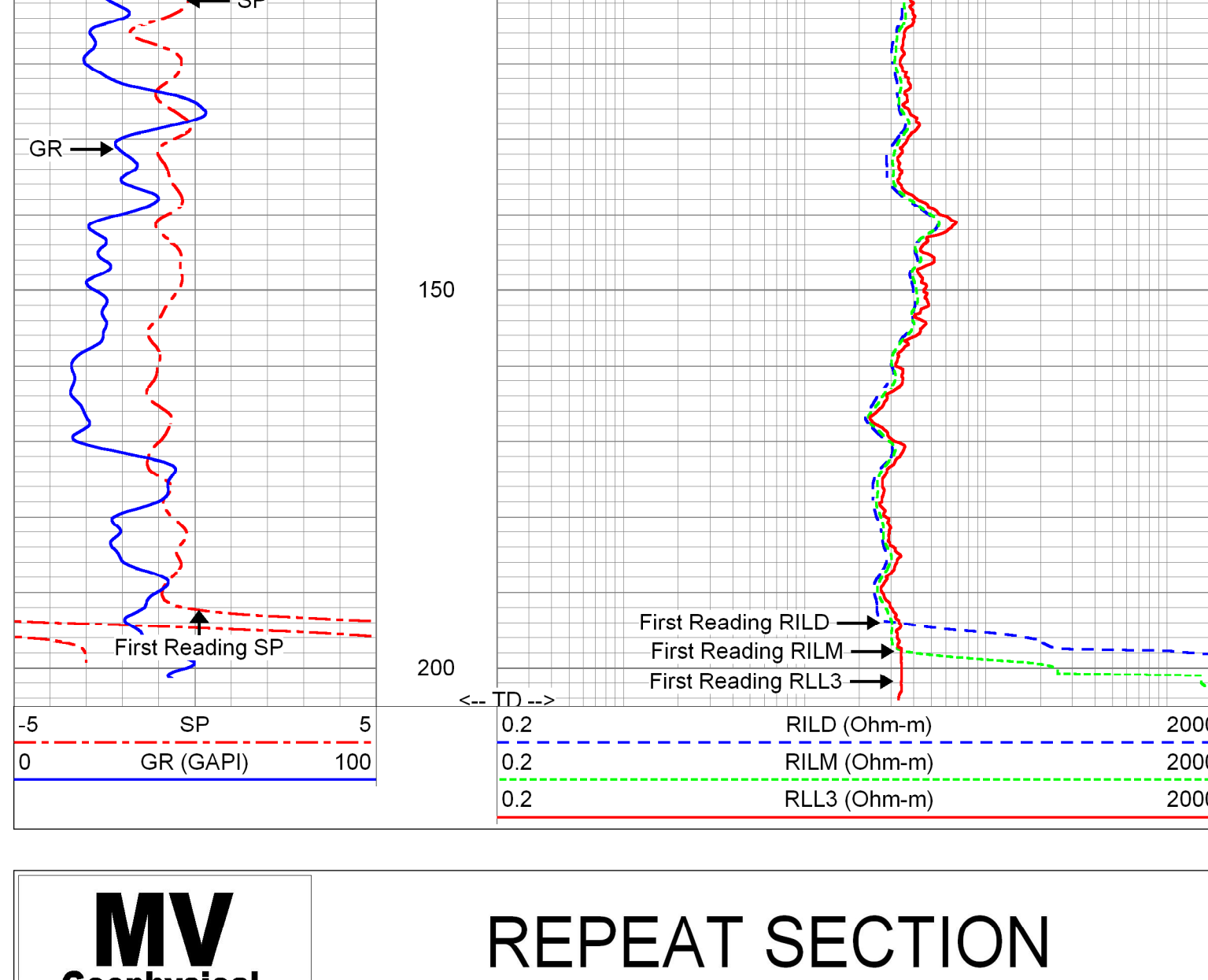
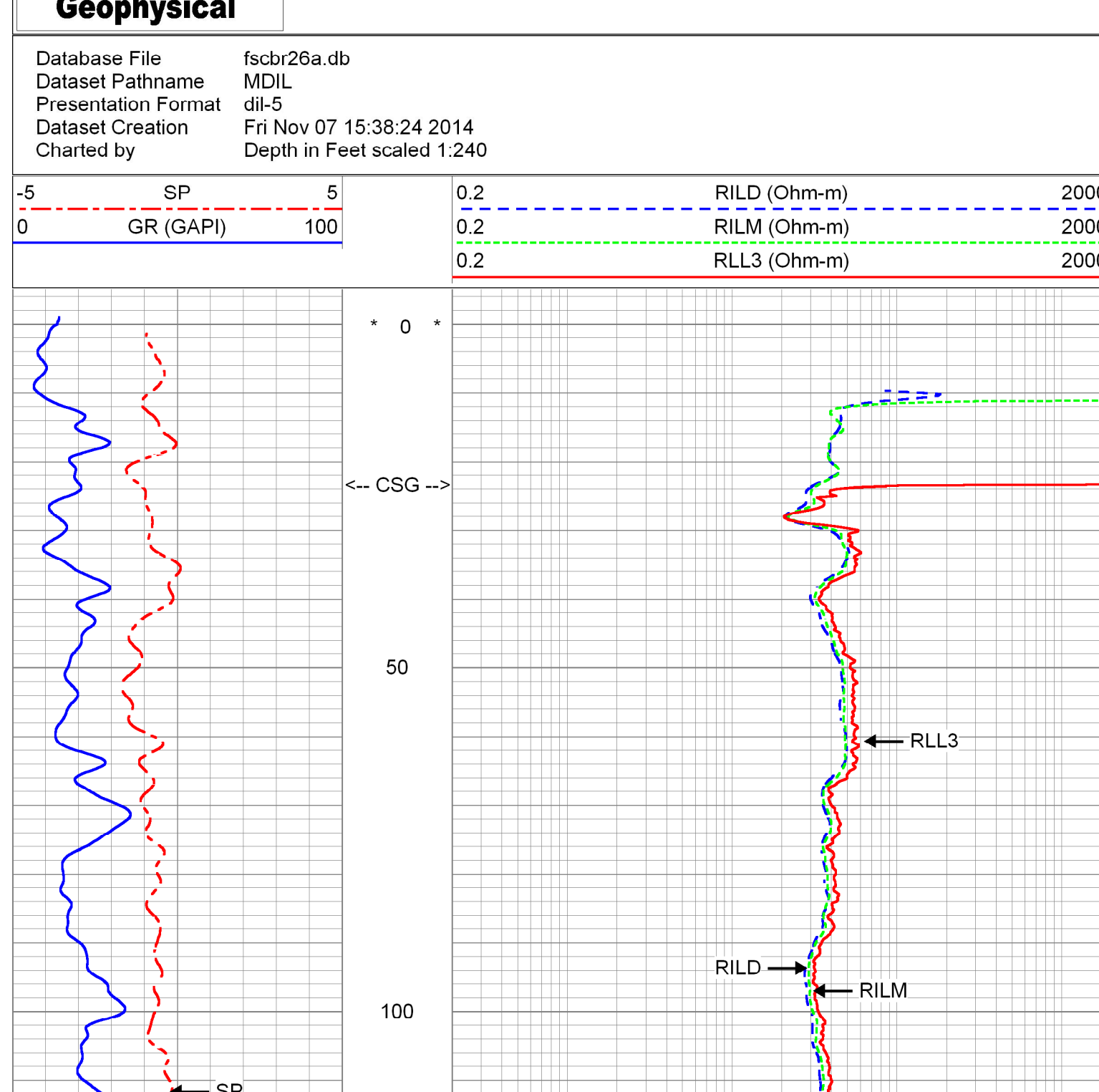
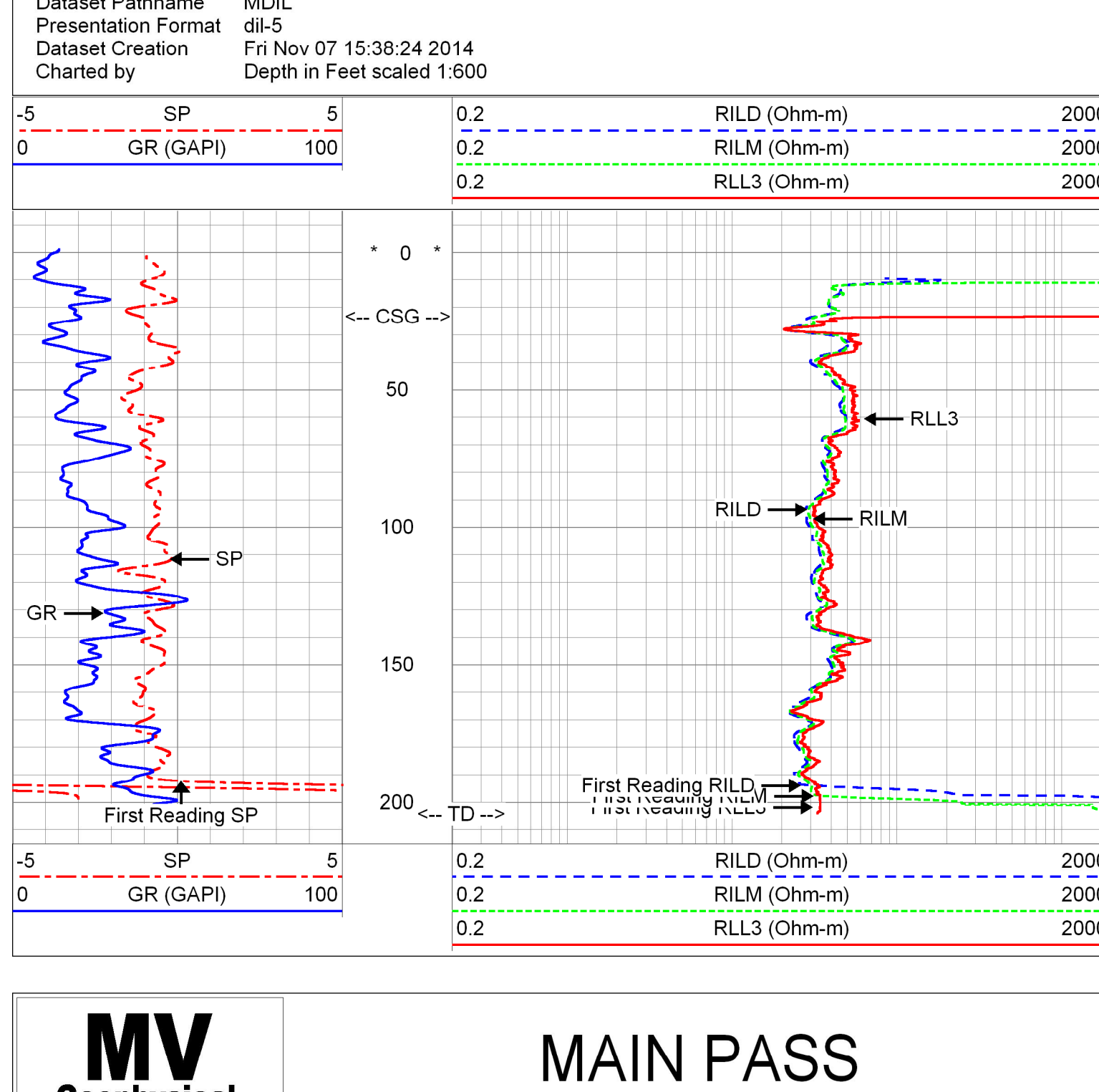
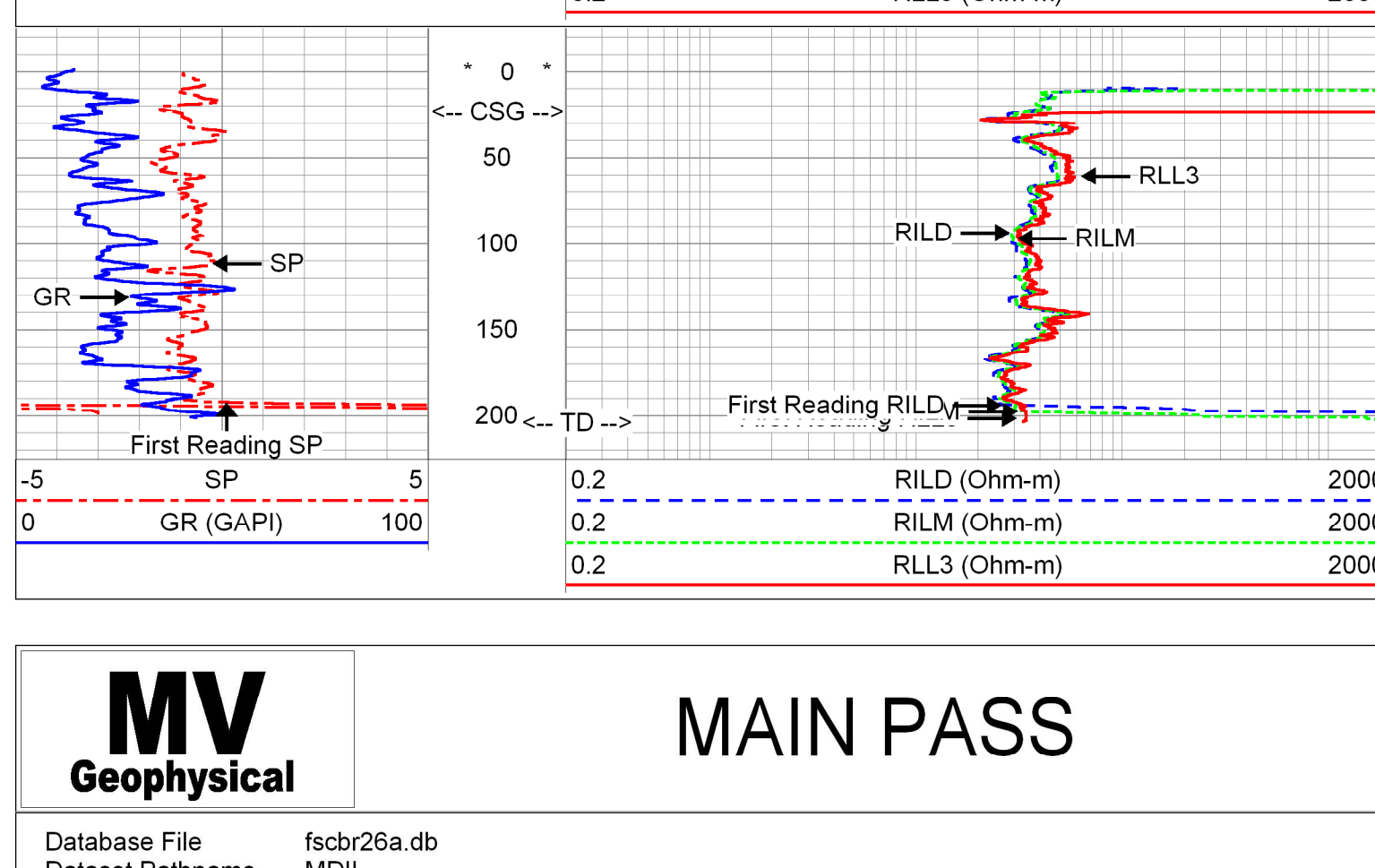
<<< Fold Here >>>

All interpretations are opinions based on inferences from electrical or other measurements and we cannot and do not guarantee the accuracy or correctness of any interpretation, and we shall not, except in the case of gross or willful negligence on our part, be liable or responsible for any loss, costs, damages, or expenses incurred or sustained by anyone resulting from any interpretation made by any of our officers, agents or employees. These interpretations are also subject to our general terms and conditions set out in our current Price Schedule.

**Comments**

Rm=6.994 ohm-m @ 83.3 deg

Drilling Sub-Contractor: CenterLine Drilling, Inc.



**Calibration Report**

Database File: fscbr26a.db  
 Dataset Pathname: pass7  
 Dataset Creation: Tue Nov 11 11:40:14 2014

**Dual Induction Calibration Report**

Serial-Model: 5390-R  
 Surface Cal Performed: Fri Oct 31 12:11:43 2014  
 Downhole Cal Performed: Fri Oct 31 12:11:54 2014  
 After Survey Verification Performed: Wed Apr 21 11:04:55 2010

**Surface Calibration**

Loop:	Readings		References	Results		
	Air	Loop		m	b	
Deep	0.050	0.645	0.000	400.000 mmho/m	672.156 -33.608	
Medium	0.018	0.735	0.000	464.000 mmho/m	647.121 -11.545	
Internal:	Zero	Cal	Zero	Cal	m	b
Deep	0.011	0.641	0.000	400.000 mmho/m	634.820 -6.983	
Medium	0.005	0.739	0.000	464.000 mmho/m	632.408 -3.370	

**Downhole Calibration**

Internal:	Readings		References		Results	
	Zero	Cal	Zero	Cal	m	b
Deep	-43.158	78.288 mmho/m	-42.562	77.983 mmho/m	0.993	0.275
Medium	-9.475	466.701 mmho/m	-8.097	466.698 mmho/m	0.997	1.351
Shallow	2.516	0.025	494.500	2.000 Ohm-m	197.719	-3.008

**After Survey Verification**

Internal:	Readings		Targets		Results	
	Zero	Cal	Zero	Cal	m'	b'
Deep	0.000	0.000 mmho/m	-43.158	78.288 mmho/m	0.993	0.275
Medium	0.000	0.000 mmho/m	-9.475	466.701 mmho/m	0.997	1.351
Shallow	0.000	0.000 Ohm-m	494.500	2.000 Ohm-m	1.000	0.000

Sensor	Offset (ft)	Schematic	Description	Length (ft)	O.D. (in)	Weight (lb)
SP	10.60	[Schematic Diagram]	R (5390)	20.90	4.00	345.00
CILD	10.60					
CILM	6.80					
RLL3	1.70					

Dataset: fscbr26a.db; field/well/run/1/pass7  
 Total length: 20.90 ft  
 Total weight: 345.00 lb  
 O.D.: 4.00 in