



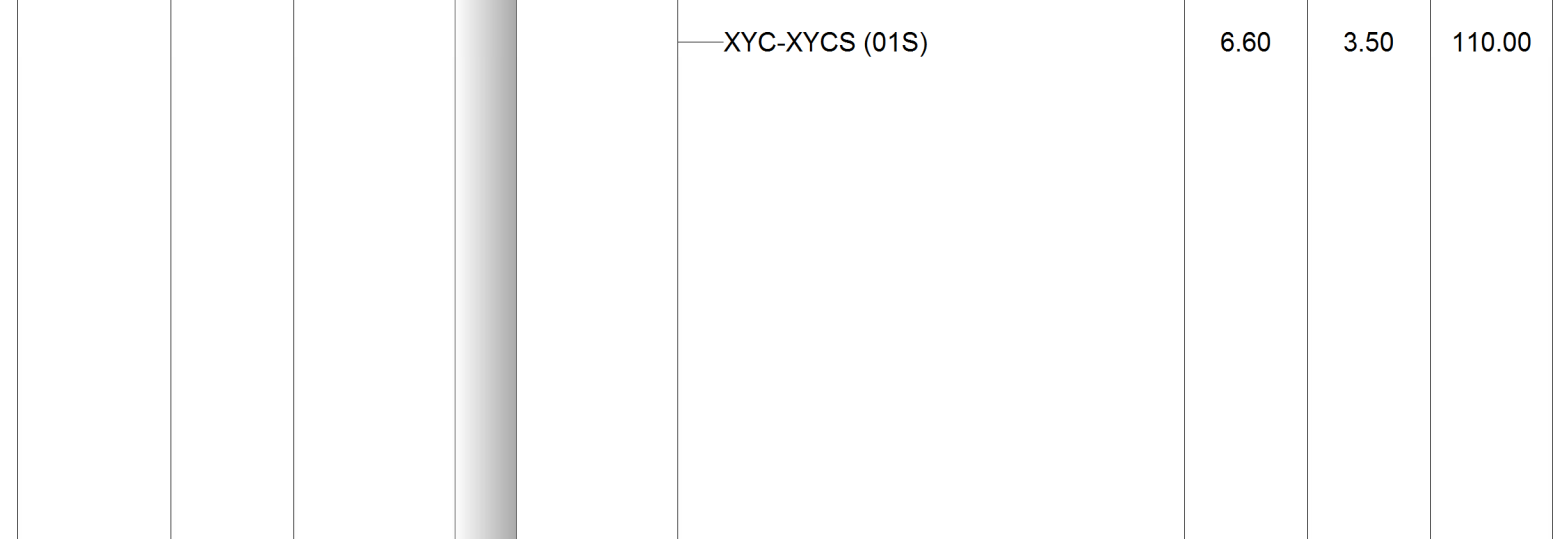
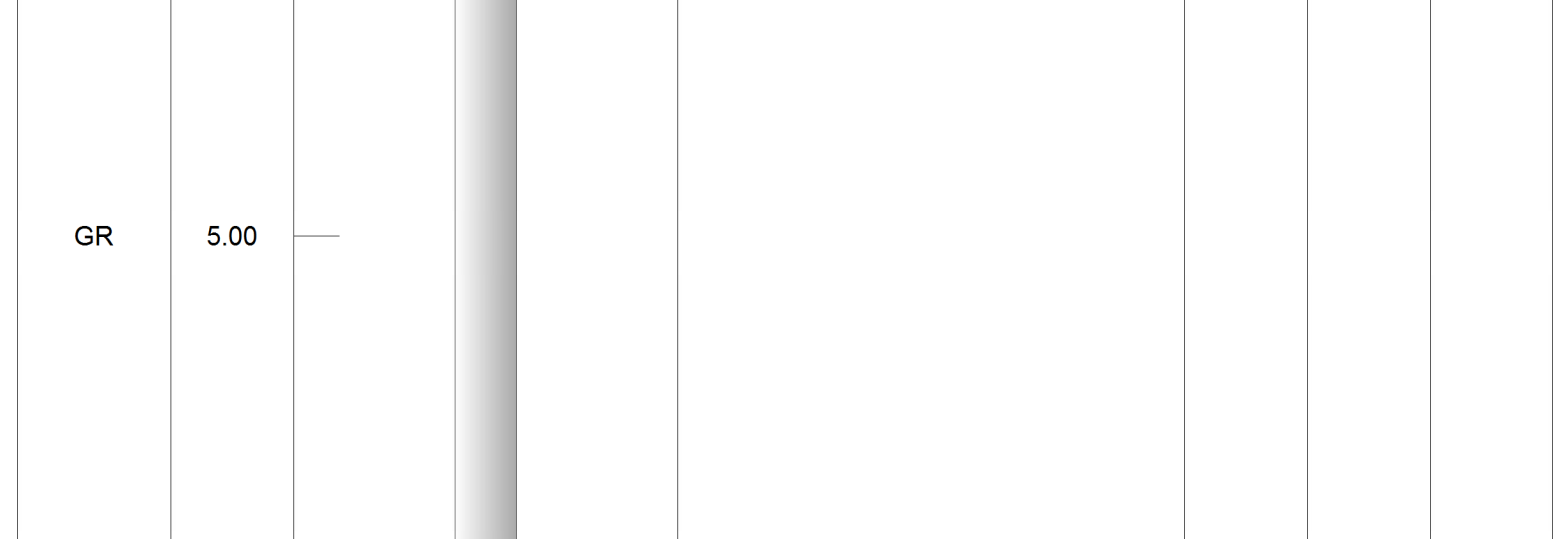
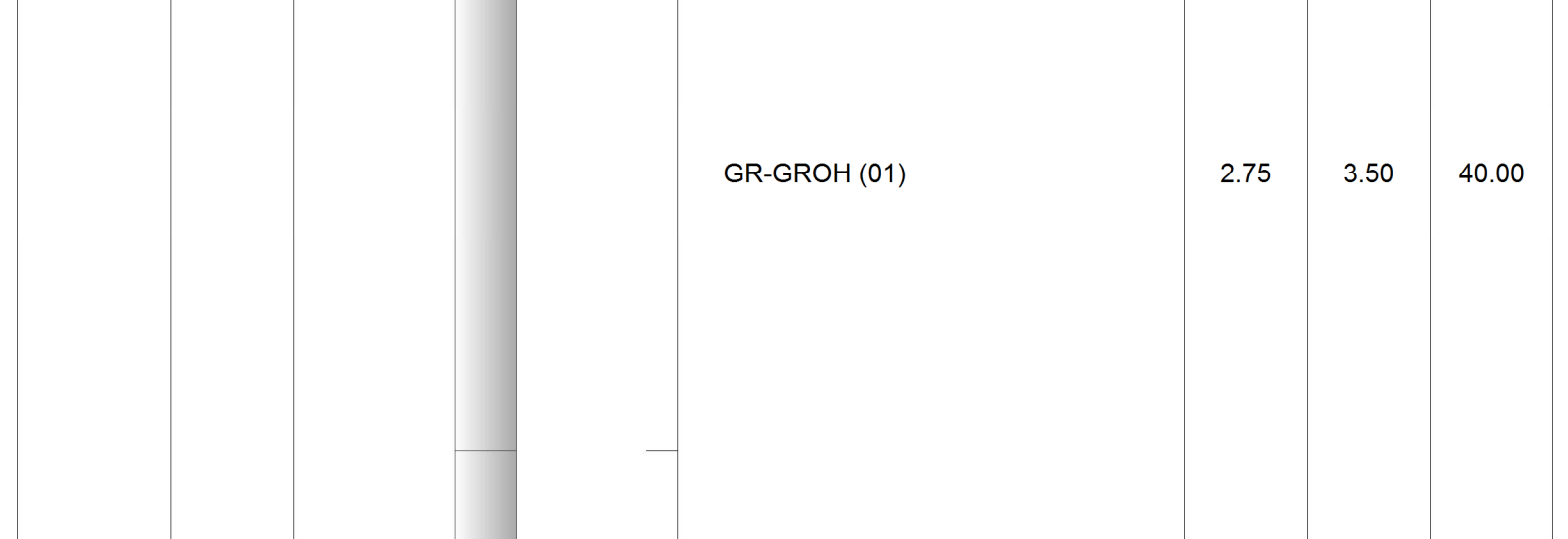
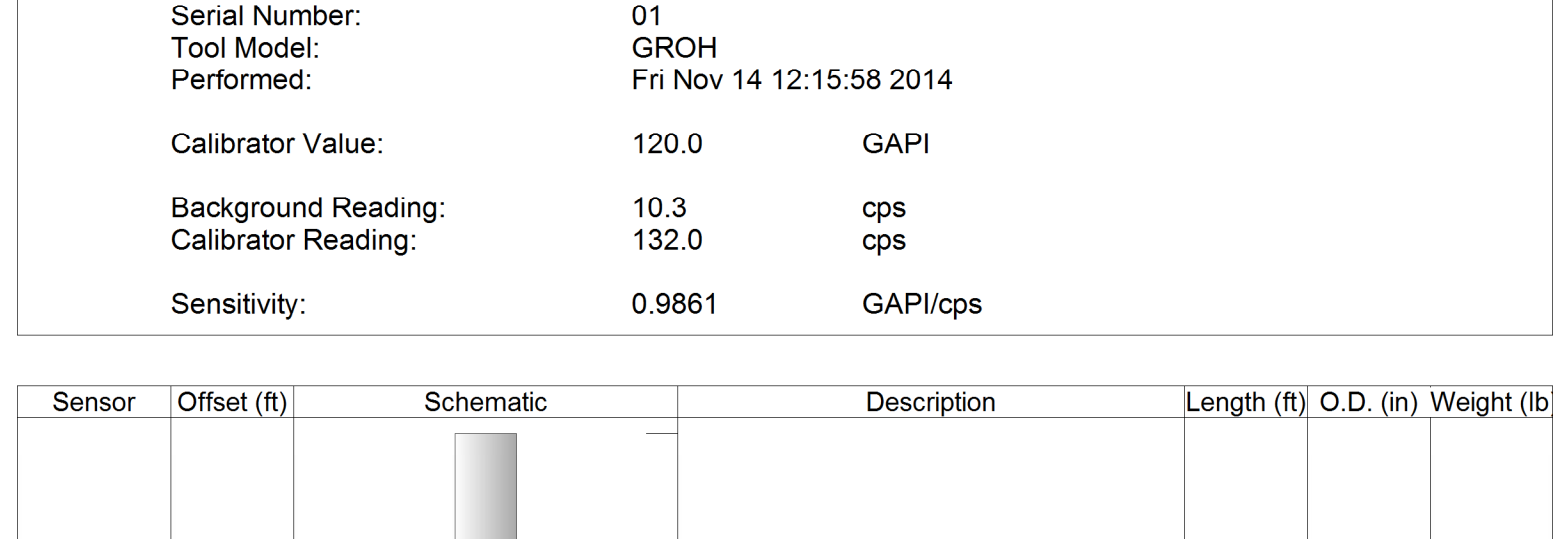
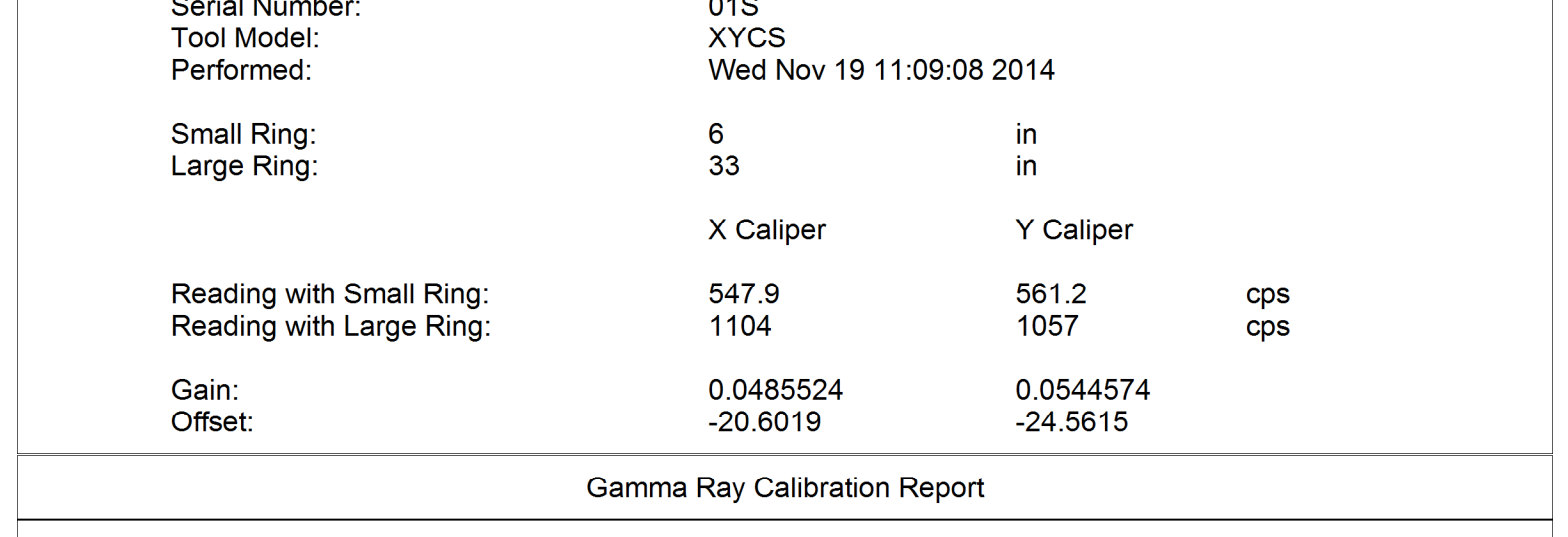
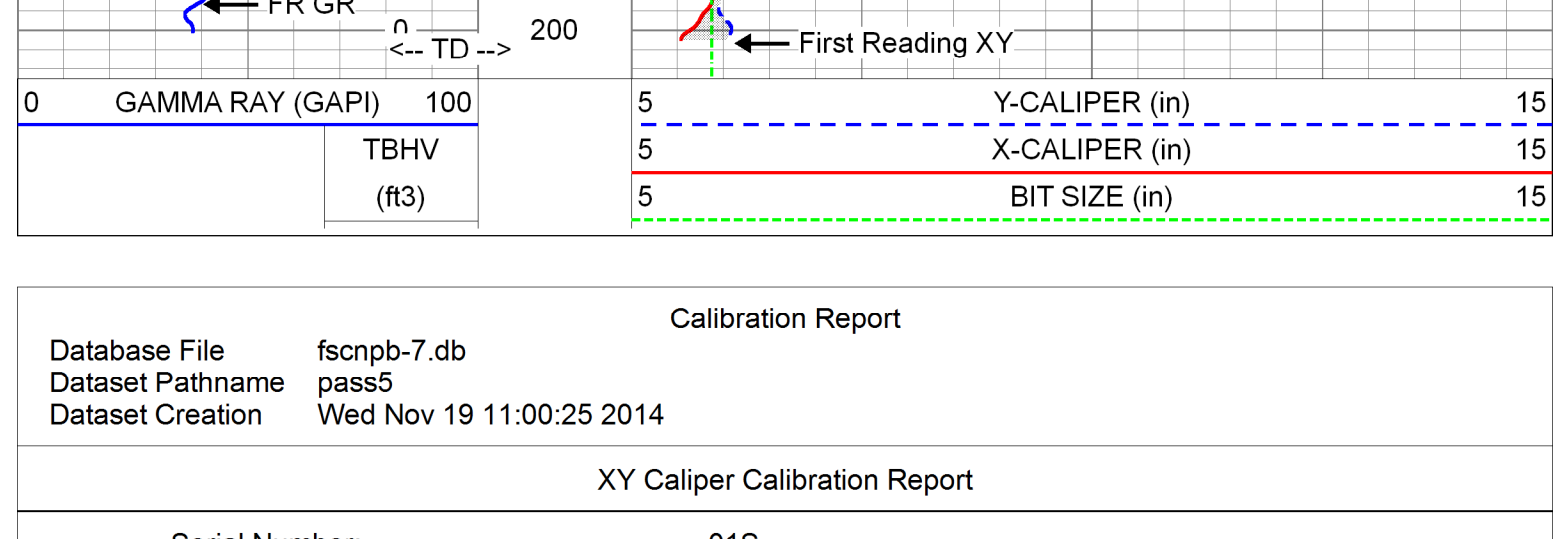
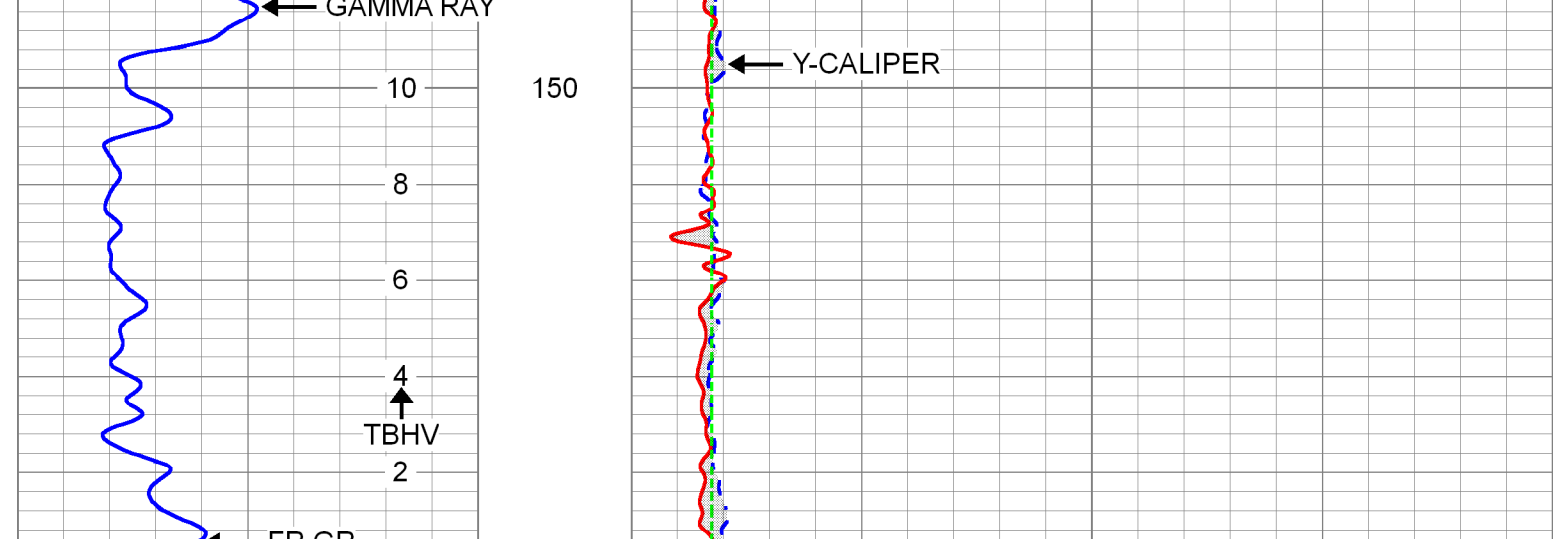
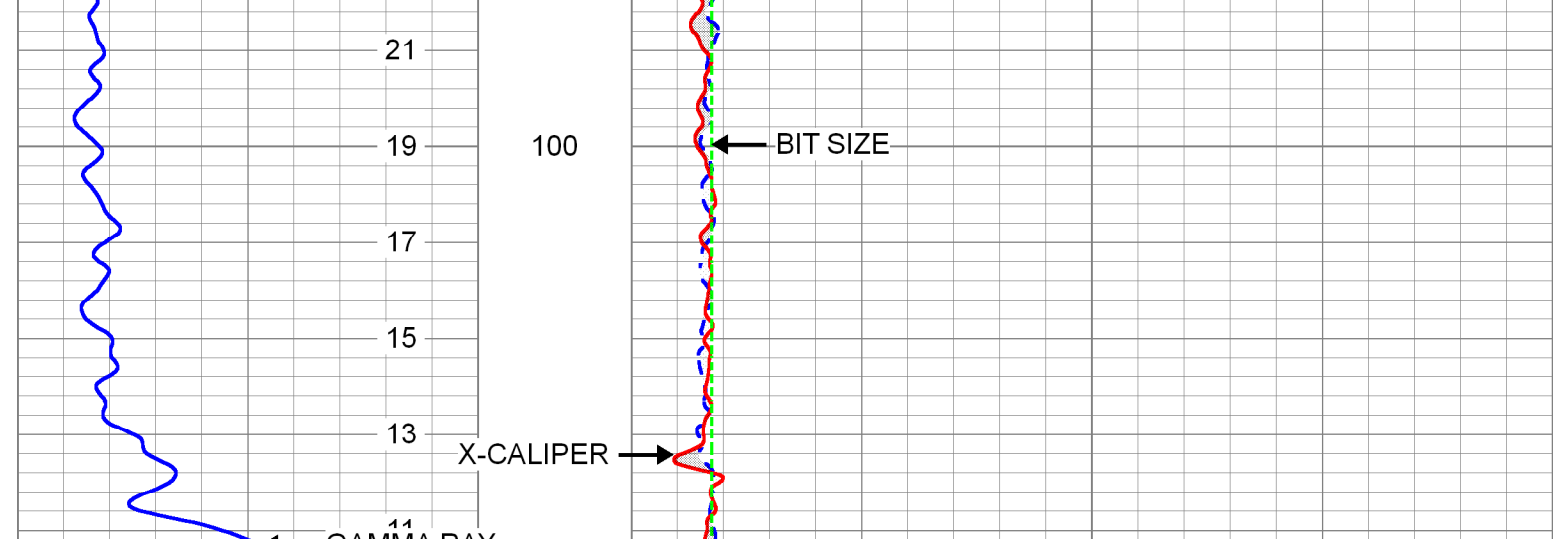
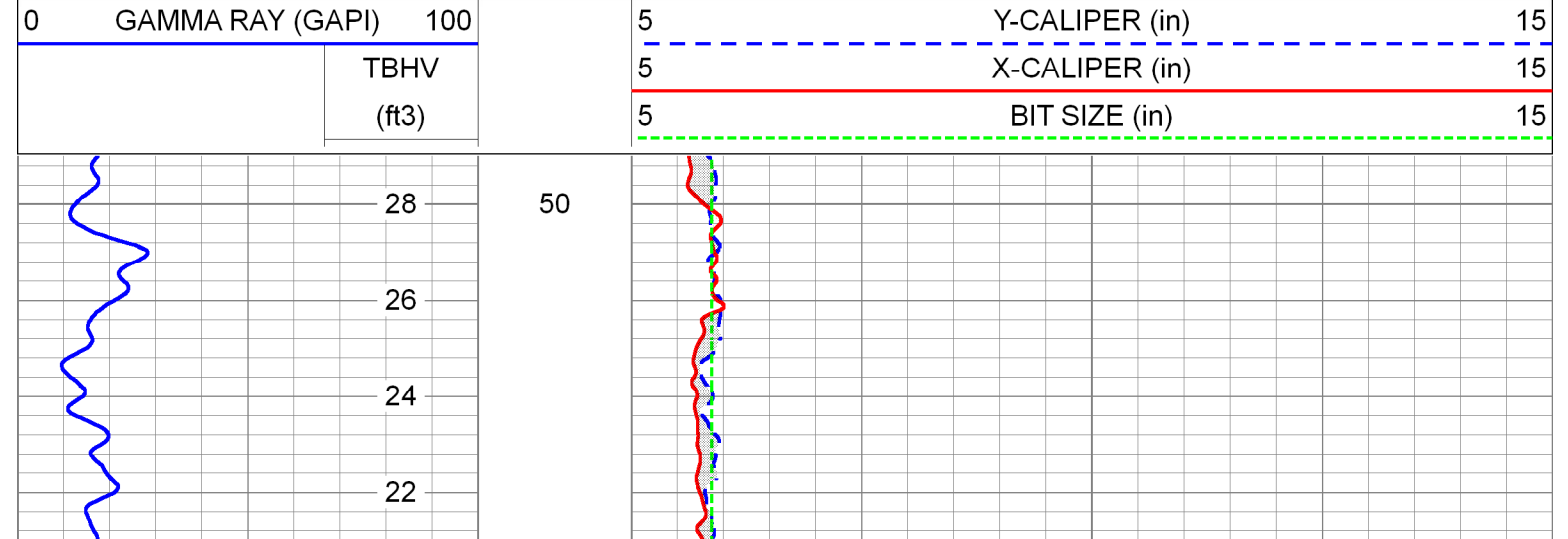
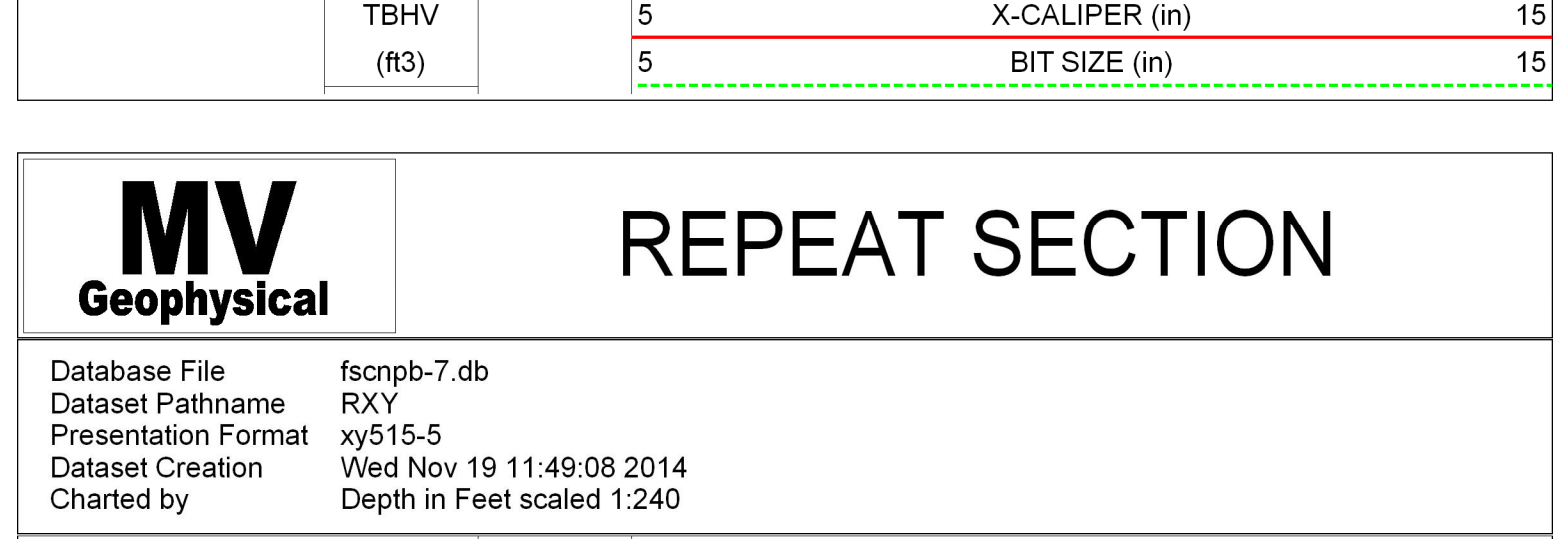
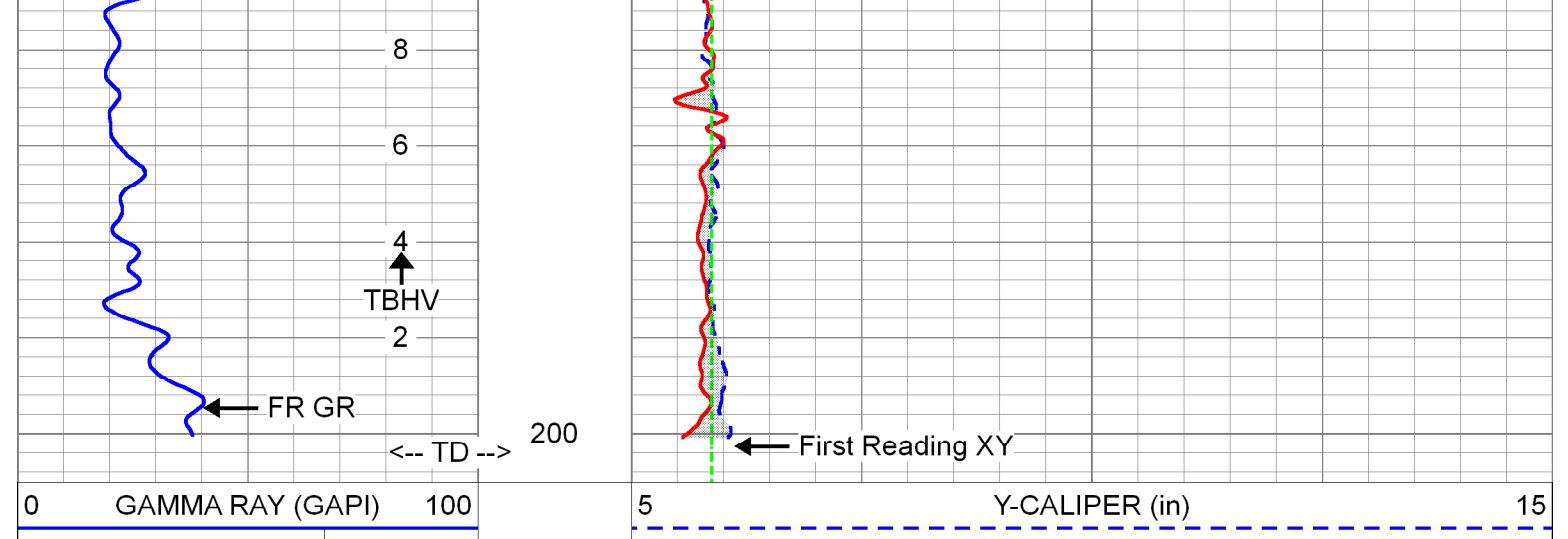
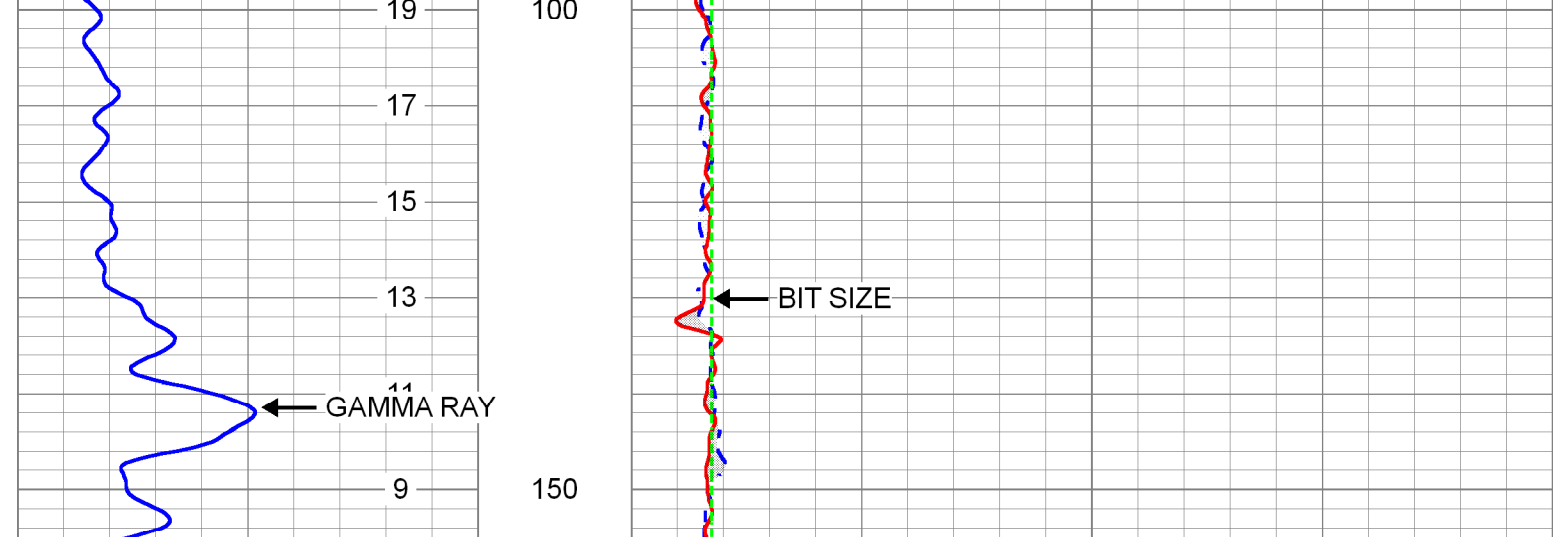
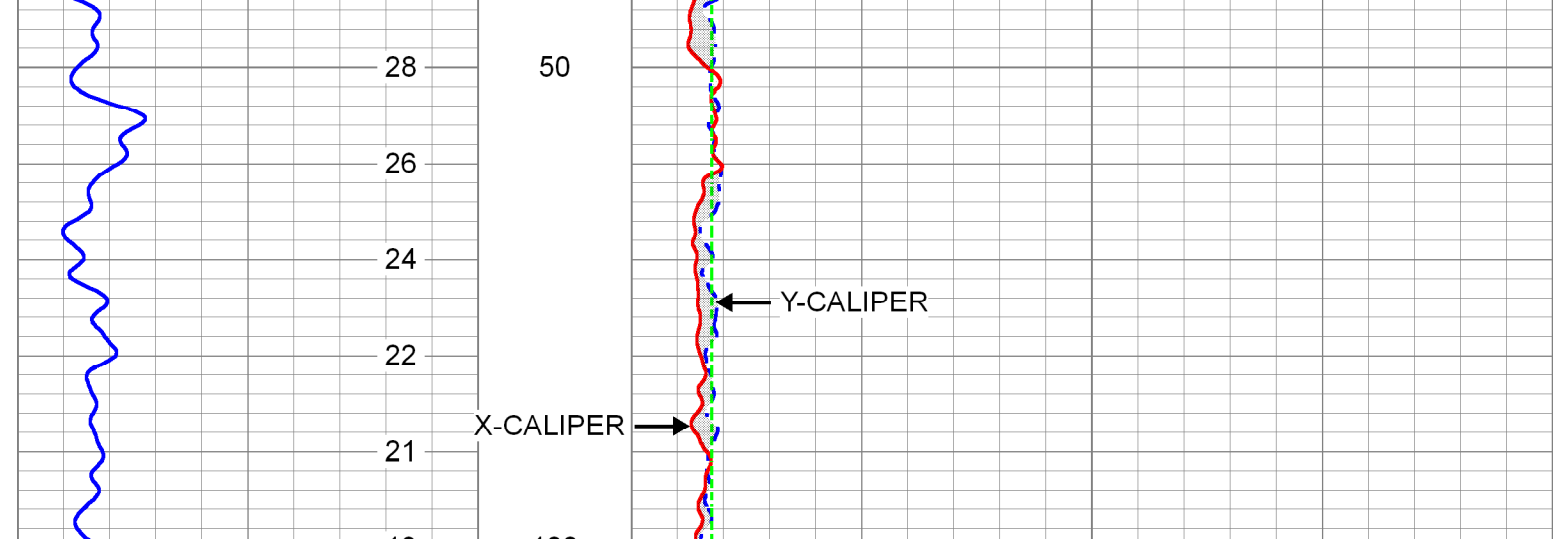
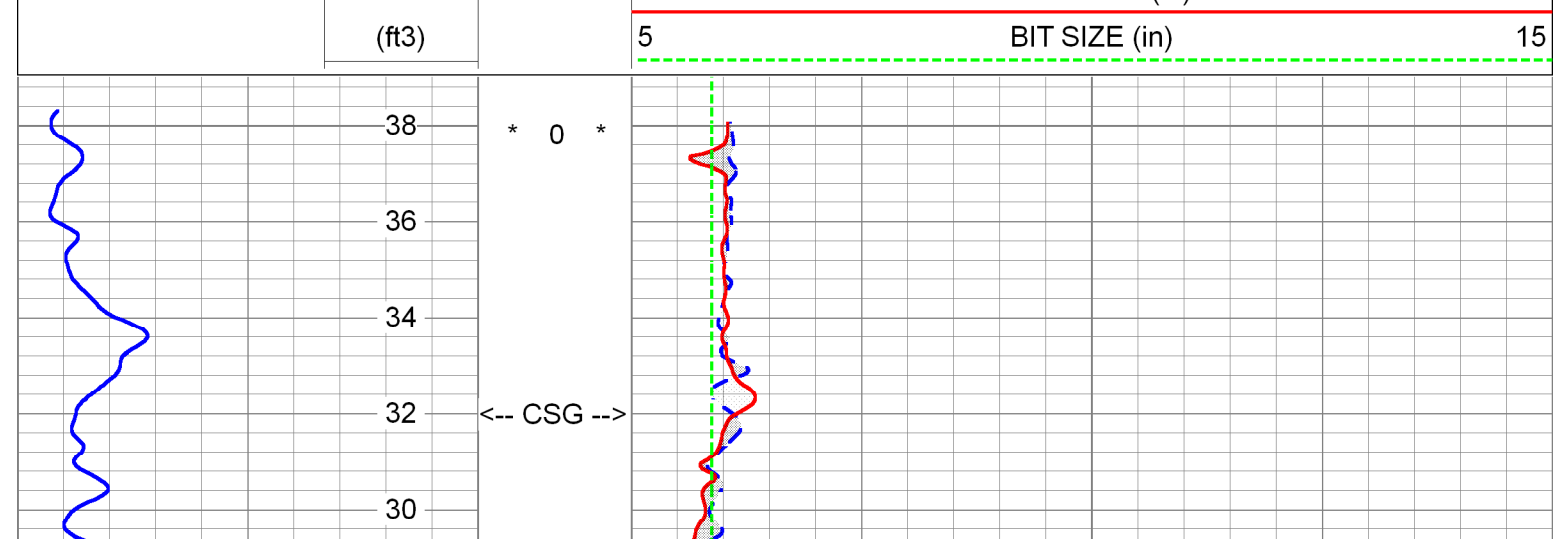
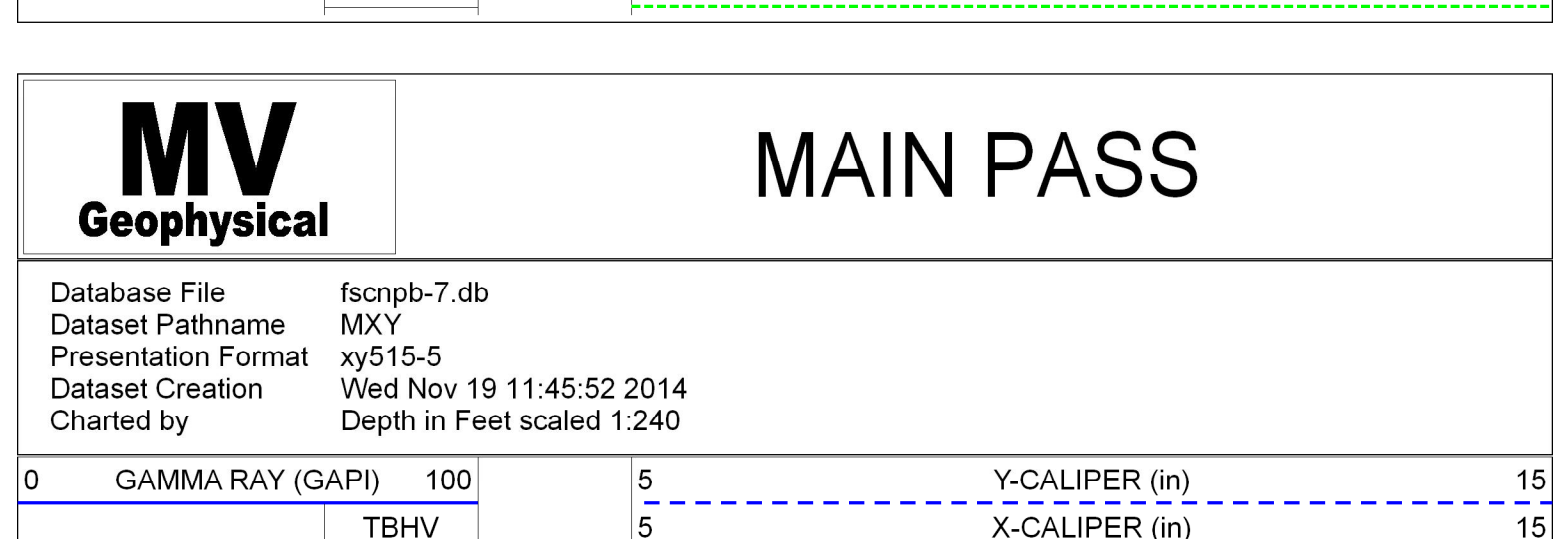
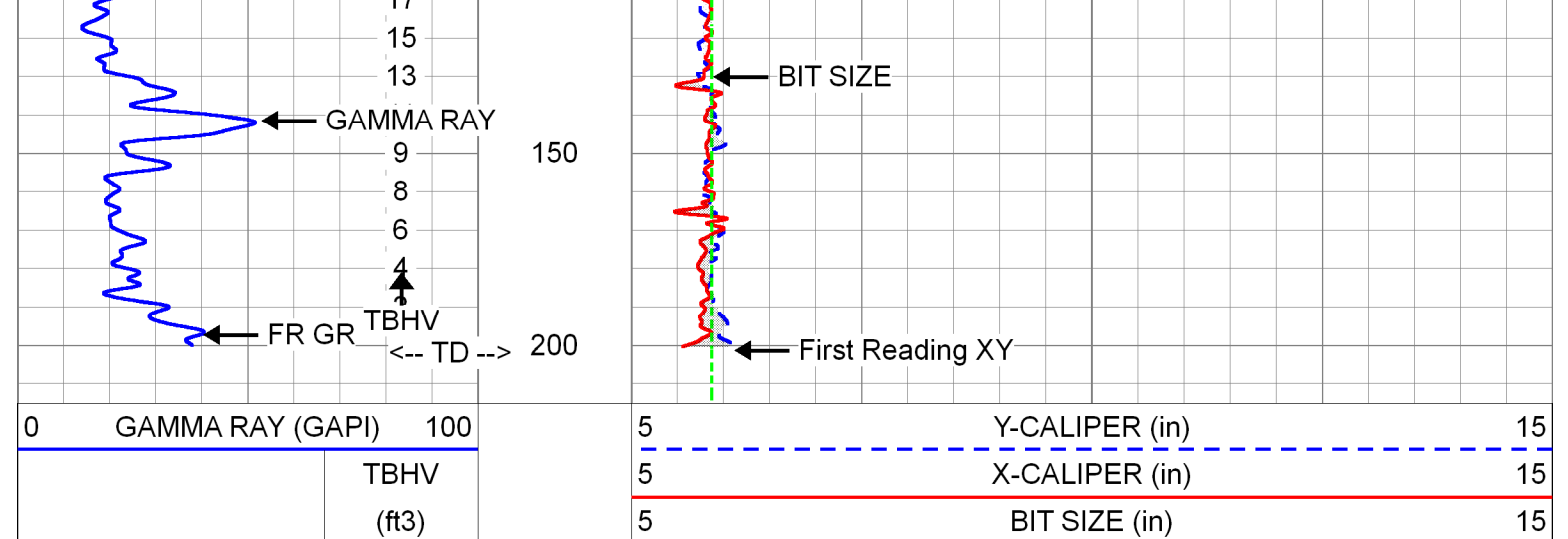
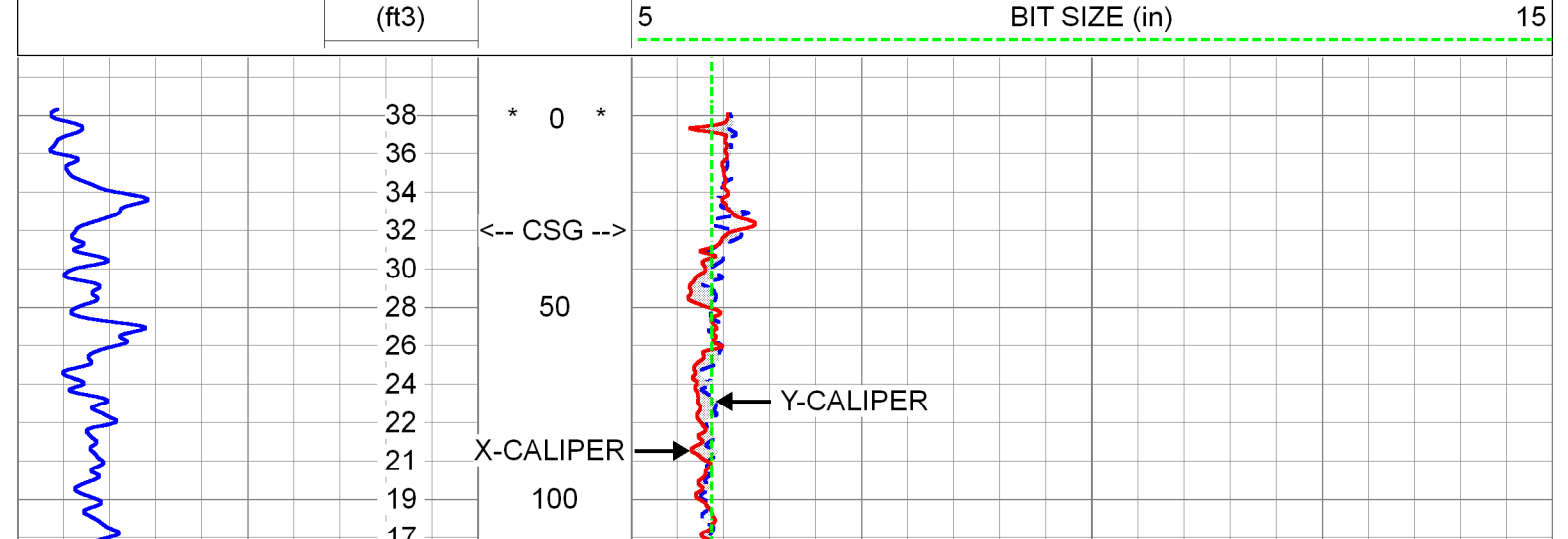
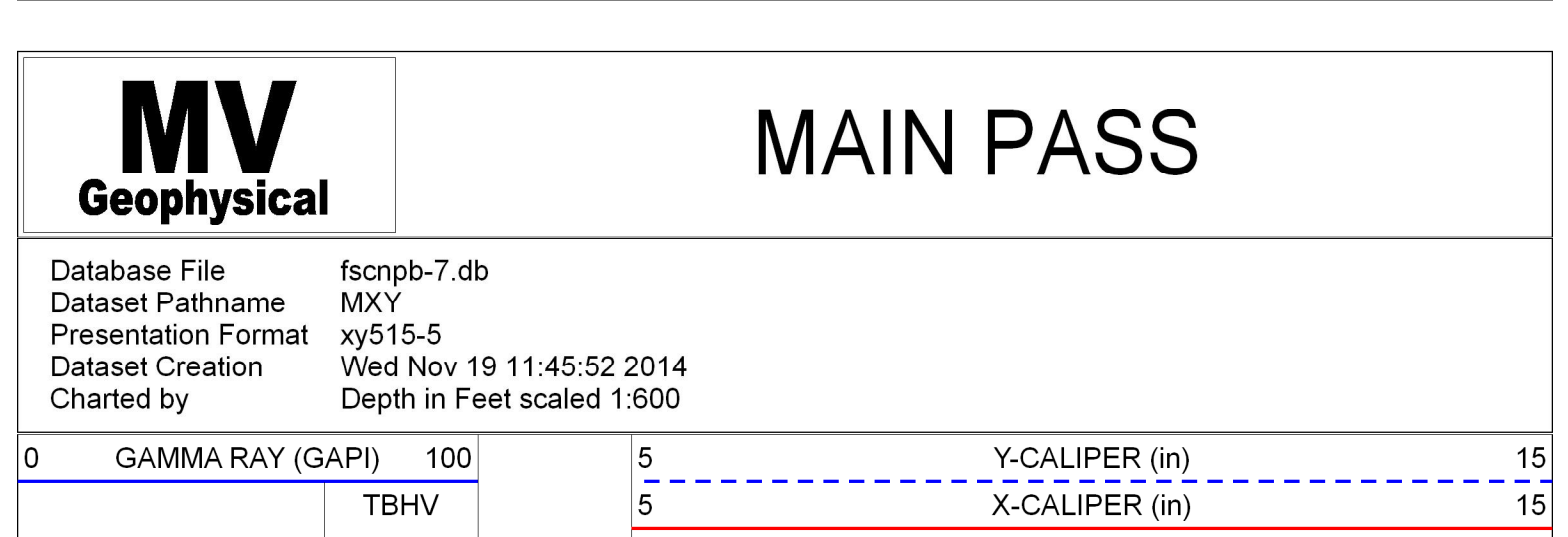
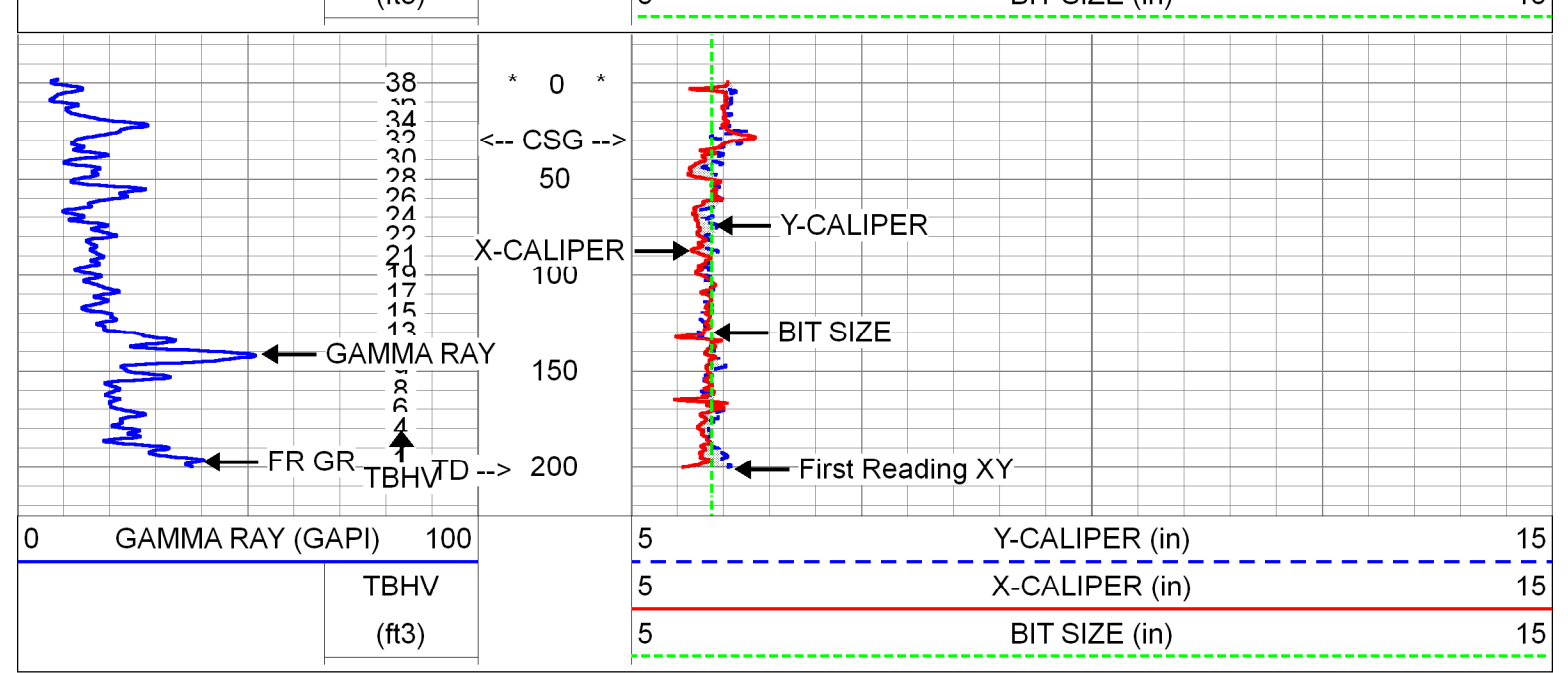
**X-Y CALIPER
GAMMA RAY
LOG**

Company	Florida Design Drilling Corp.	Country	USA
Well	NPB-7	Field	North Palm Beach
County	Palm Beach	State	Florida
Location:	Seacoast Utility Authority Richard Road W/TP W/field Expansion SEC RICHARD ROAD W/TP - U/L Geoservices, Inc.	AP#:	
Log Measured From	G.L.	Elevation	
Drilling Measured From	G.L.	K.B.:	
Date	19-NOV-2014	O.D.:	
Run Number	ONE	Other Services	XY/GR DL/SP
Depth Driller	207		
Tool Joint Interval	207		
Open Hole Size	5.875		
Type Fluid	MUD		
Density / Viscosity	NA/NA		
Max. Recorded Temp.	NA		
Estimated Cement Top	NA		
Time Well Ready	10:30 11/19/2014		
Time Logset on Bottom	11:00 11/19/2014		
Equipment Number	M/S-5		
Recorded By	S Miller/J Miller		
Witnessed By	D Stout (JLA)	J.Say (CLD)	
Run Number	ONE	Bit	From 200 To
Bit	5.875"	Size	Weight
From	30'	To	200'
Production String	Temporary	Size	Weight
Surface String	6" VVC	Weight	Top SURFACE
Casing Record	6" VVC	Weight	Bottom 30'
Production String	20114207	3spoolbars	fscnpb-7.db

All interpretations are opinions based on inferences from electrical or other measurements and we cannot and do not guarantee the accuracy or correctness of any interpretation, and we shall not, except in the case of gross or willful negligence on our part, be liable or responsible for any loss, costs, damages, or expenses incurred or sustained by anyone resulting from any interpretation made by any of our officers, agents or employees. These interpretations are also subject to our general terms and conditions set out in our current Price Schedule.

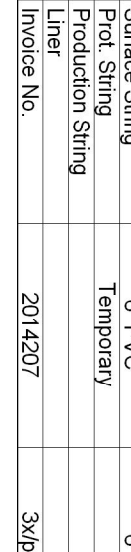
Comments

MAXIMUM ARM EXTENSION: 33"
BOREHOLE VOLUMES IN CUBIC FEET.
Drilling Sub-Contractor: CenterLine Drilling, Inc.



Sensor	Offset (ft)	Schematic	Description	Length (ft)	O.D. (in)	Weight (lb)
GR	5.00		GR-GROH (01)	2.75	3.50	40.00
YCAL	0.50		XYC-XYCS (01S)	6.60	3.50	110.00
XCAL	0.50					

Dataset: fscnpb-7.db; field/well/run1/pass5
Total length: 9.35 ft
Total weight: 150.00 lb
O.D.: 3.50 in



**DUAL INDUCTION
LL3/SP
LOG**

Company: Florida Design Drilling Corp.
Well: NPB-7
Field: North Palm Beach
County: Palm Beach
State: Florida
Country: USA

Company: Florida Design Drilling Corp.
Well: NPB-7
Field: North Palm Beach
County: Palm Beach
State: Florida
Country: USA

Location: Sarasota Utility Authority
Richard Road IV/TP - Wellfield Expansion
SEC - JLN RCE
TMP - JLN RCE
Log Measured From: G.L.
Drilling Measured From: G.L.

Date: 19-NOV-2014
Run Number: ONE
Depth Driller: 200'
Depth Logger: 202'
Bottom Logger Interval: 30'
Tool Joint: 30'
Open Hole Size: 5.875"
Type Fluid: MUD
Density / Viscosity: NANA
Max. Recorded Temp: NANA
Estimated Cement Top: NA

Time Well Ready: 10:30 11/19/2014
Time Logger on Bottom: 10:30 11/19/2014
Equipment Number: FM-551
Recorded By: S. Miller / Miller
Witnessed By: D. Stout (JLN)
J.Say (JLD)
Run Number: ONE
Bit: 5.875"
From: 30'
To: 200'
Size: 200'
Weight: From To
Tubing Record: From To

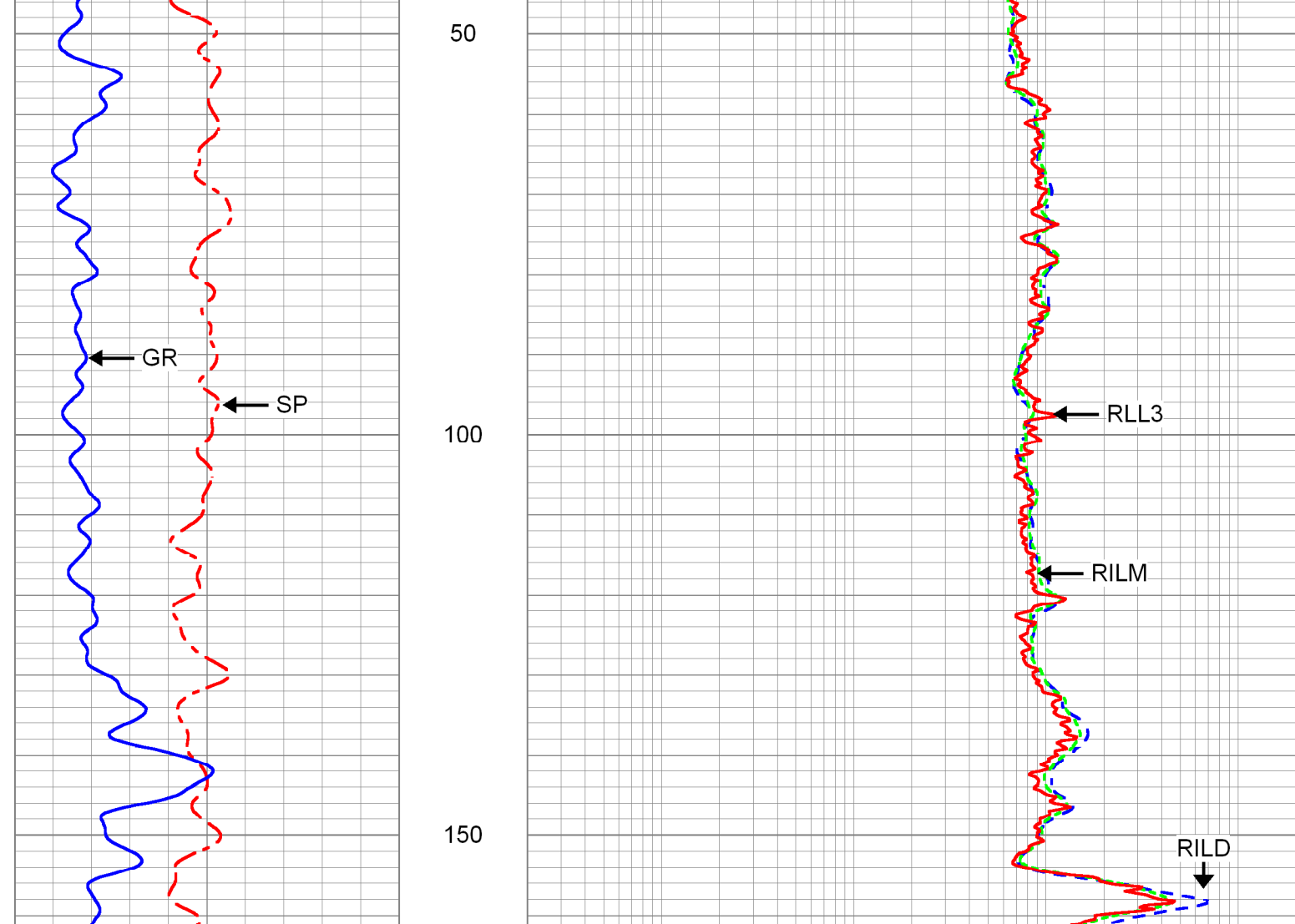
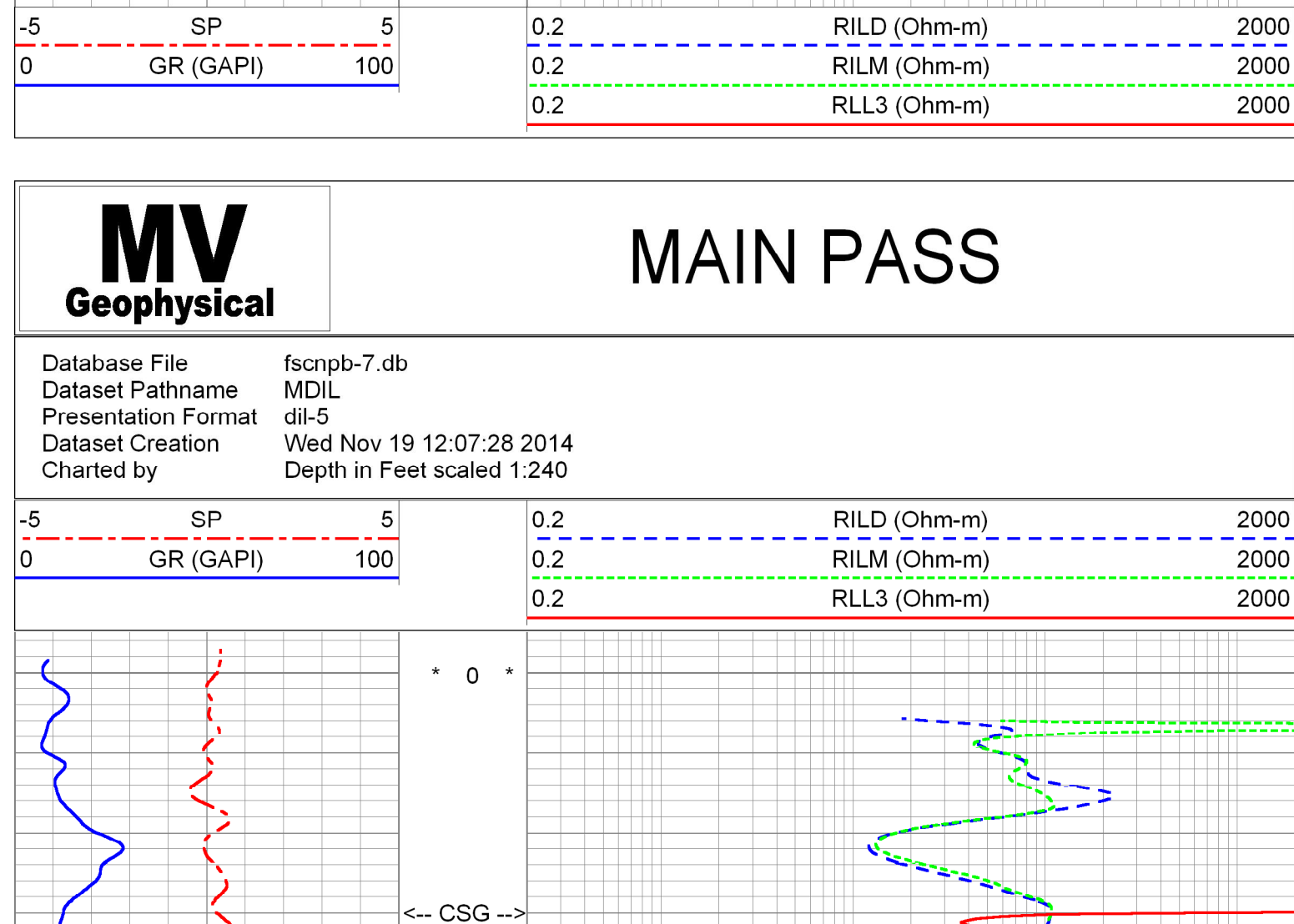
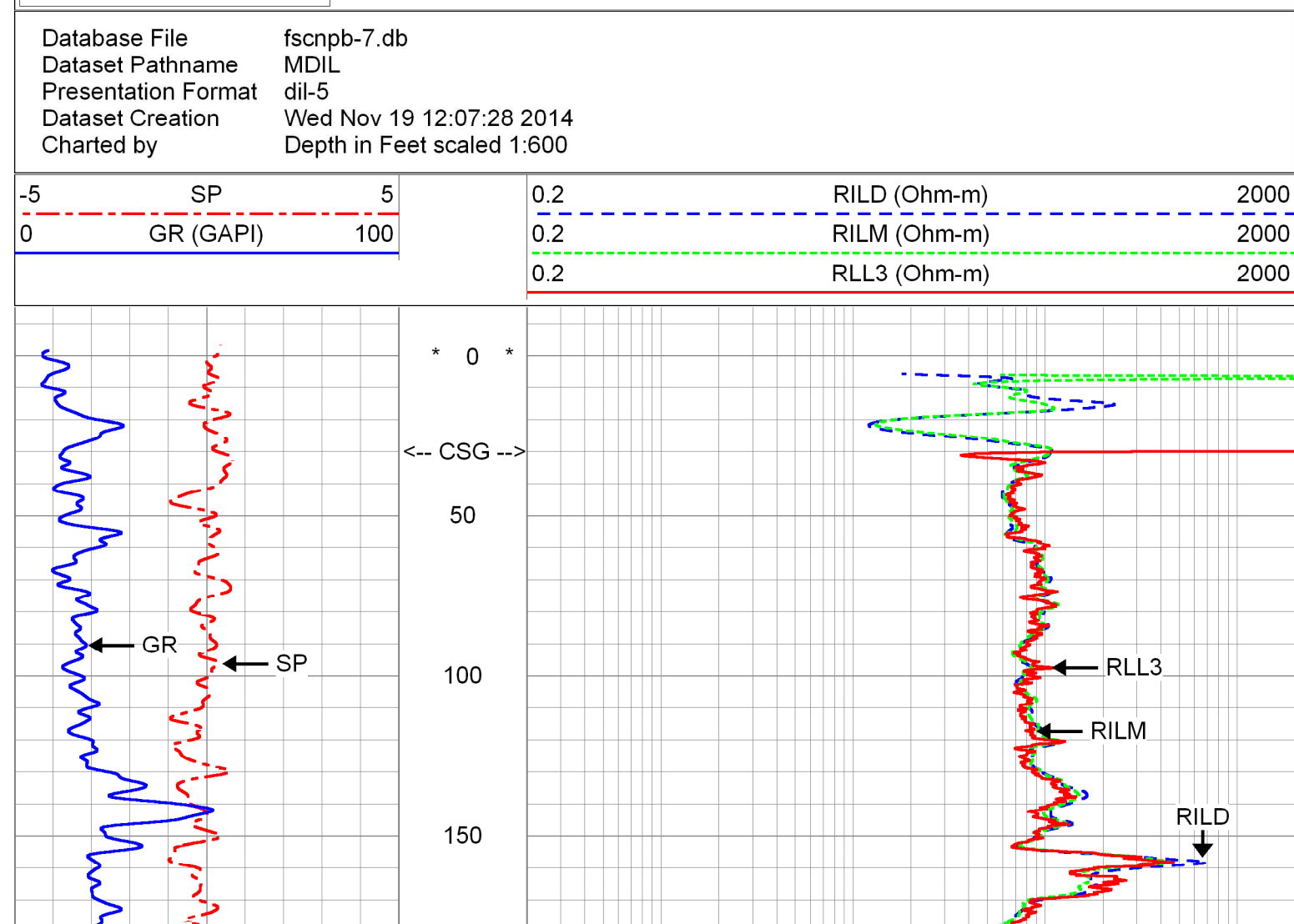
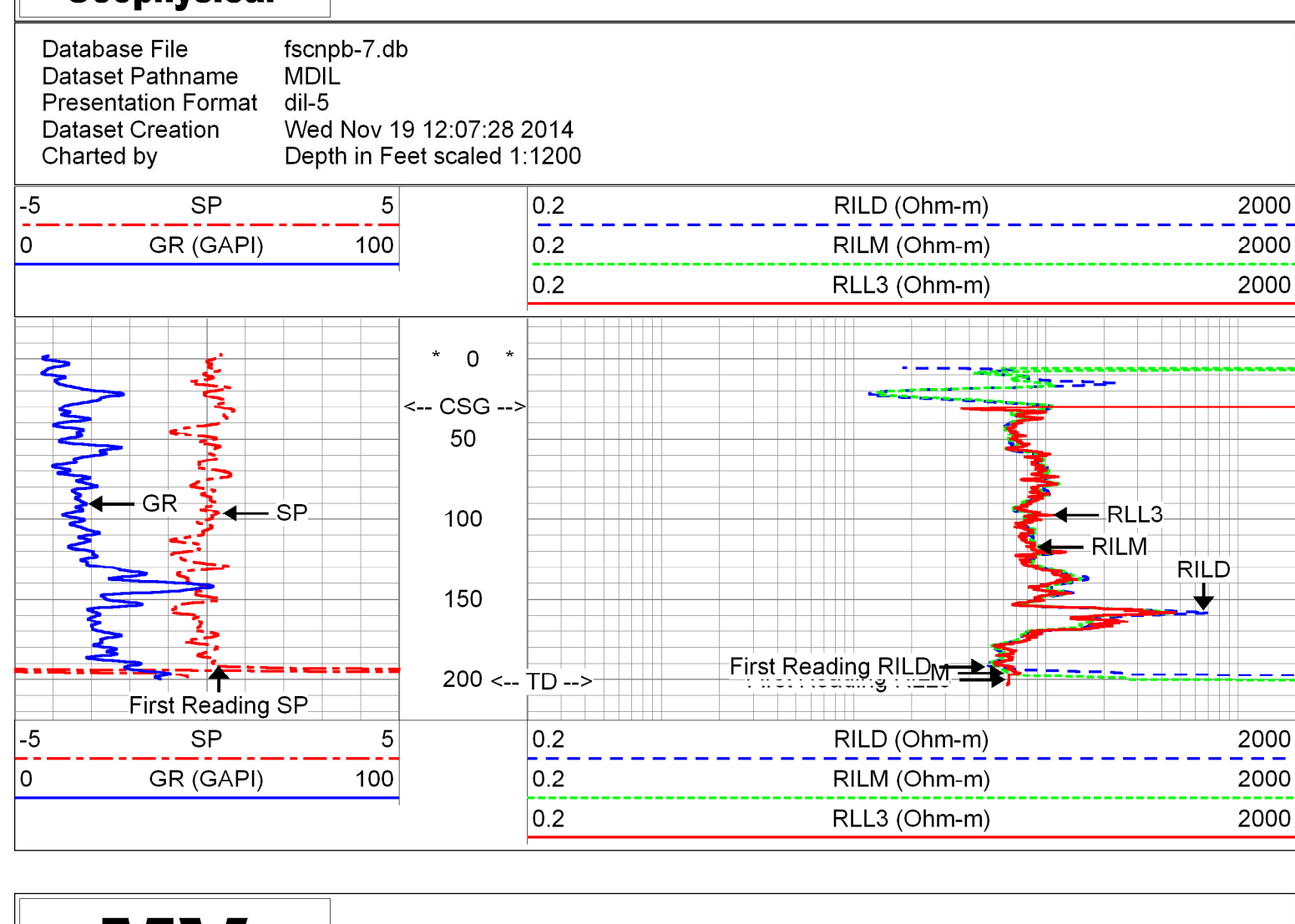
<<< Fold Here >>>

All interpretations are opinions based on inferences from electrical or other measurements and we cannot and do not guarantee the accuracy or correctness of any interpretation, and we shall not, except in the case of gross or willful negligence on our part, be liable or responsible for any loss, costs, damages, or expenses incurred or sustained by anyone resulting from any interpretation made by any of our officers, agents or employees. These interpretations are also subject to our general terms and conditions set out in our current Price Schedule.

Comments

Rm=6.925 ohm-m @ 75.1 deg

Drilling Sub-Contractor: CenterLine Drilling, Inc.



Calibration Report

Database File: fscnpb-7.db
Dataset Pathname: pass3
Dataset Creation: Wed Nov 19 10:42:30 2014

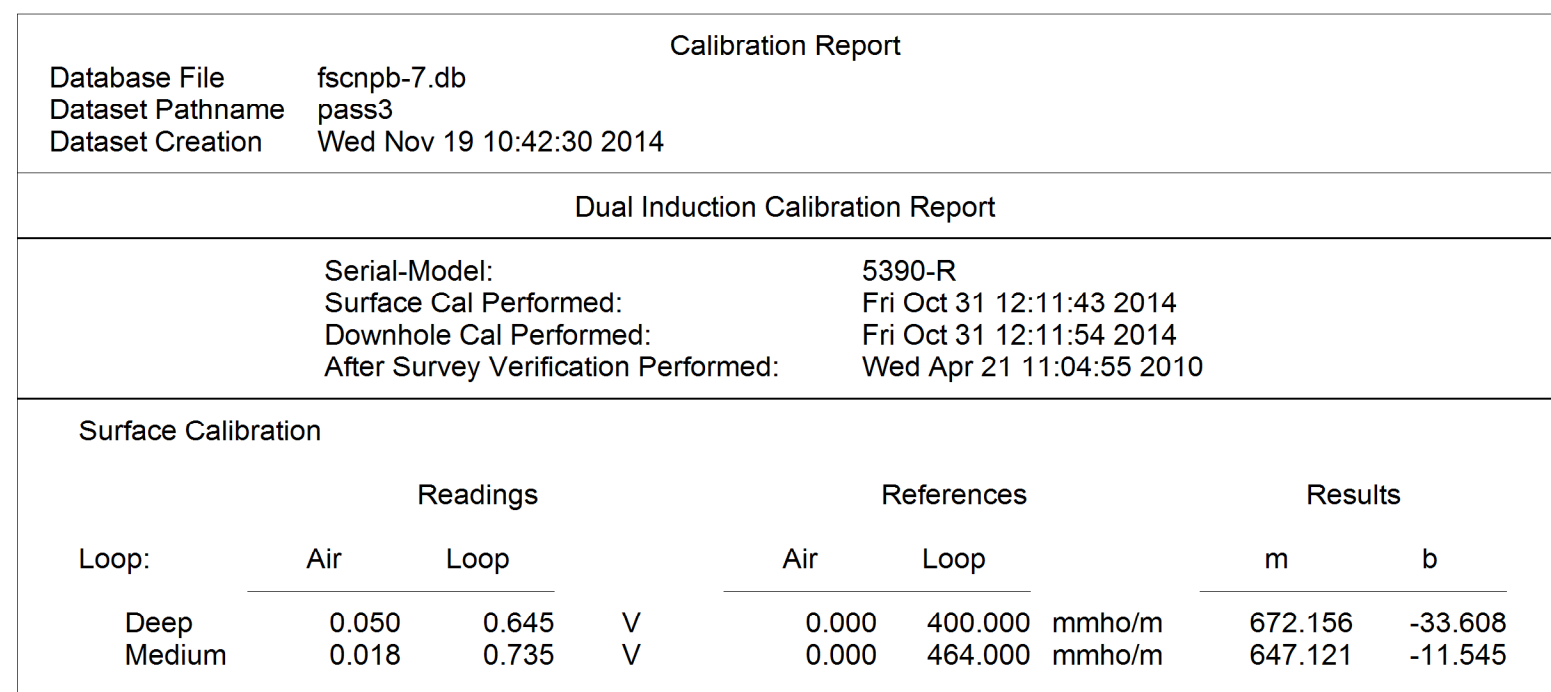
Dual Induction Calibration Report

Serial-Model:	5390-R
Surface Cal Performed:	Fri Oct 31 12:11:43 2014
Downhole Cal Performed:	Fri Oct 31 12:11:54 2014
After Survey Verification Performed:	Wed Apr 21 11:04:55 2010

Surface Calibration		Readings		References		Results		
Loop:	Air	Loop		Air	Loop	m	b	
Deep	0.050	0.645	V	0.000	400.000	mmho/m	672.156	-33.608
Medium	0.018	0.735	V	0.000	464.000	mmho/m	647.121	-11.545
Internal:		Zero	Cal	Zero	Cal	m	b	
Deep	0.011	0.641	V	0.000	400.000	mmho/m	634.820	-6.983
Medium	0.005	0.739	V	0.000	464.000	mmho/m	632.408	-3.370

Downhole Calibration		Readings		References		Results		
Internal:	Zero	Cal		Zero	Cal	m	b	
Deep	-43.158	78.288	mmho/m	-42.562	77.983	mmho/m	0.993	0.275
Medium	-9.475	466.701	mmho/m	-8.097	466.698	mmho/m	0.997	1.351
Shallow	2.516	0.025	V	494.500	2.000	Ohm-m	197.718	-3.008

After Survey Verification		Readings		Targets		Results		
Internal:	Zero	Cal		Zero	Cal	m'	b'	
Deep	0.000	0.000	mmho/m	-43.158	78.288	mmho/m	0.993	0.275
Medium	0.000	0.000	mmho/m	-9.475	466.701	mmho/m	0.997	1.351
Shallow	0.000	0.000	Ohm-m	494.500	2.000	Ohm-m	1.000	0.000

Sensor	Offset (ft)	Schematic	Description	Length (ft)	O.D. (in)	Weight (lb)
SP	10.60		R (5390)	20.90	4.00	345.00
CILD	10.60					
CILM	6.80					
RLL3	1.70					

Dataset: fscnpb-7.db; field/well/run1/pass3
Total length: 20.90 ft
Total weight: 345.00 lb
O.D.: 4.00 in

MV Geophysical

Company: Florida Design Drilling Corp.
Well: NPB-7
Field: North Palm Beach
County: Palm Beach
State: Florida
Country: USA