

093-79

Well No. 237 (W-3739)

Elevation G.L. 44' D.F. 54' K.B.

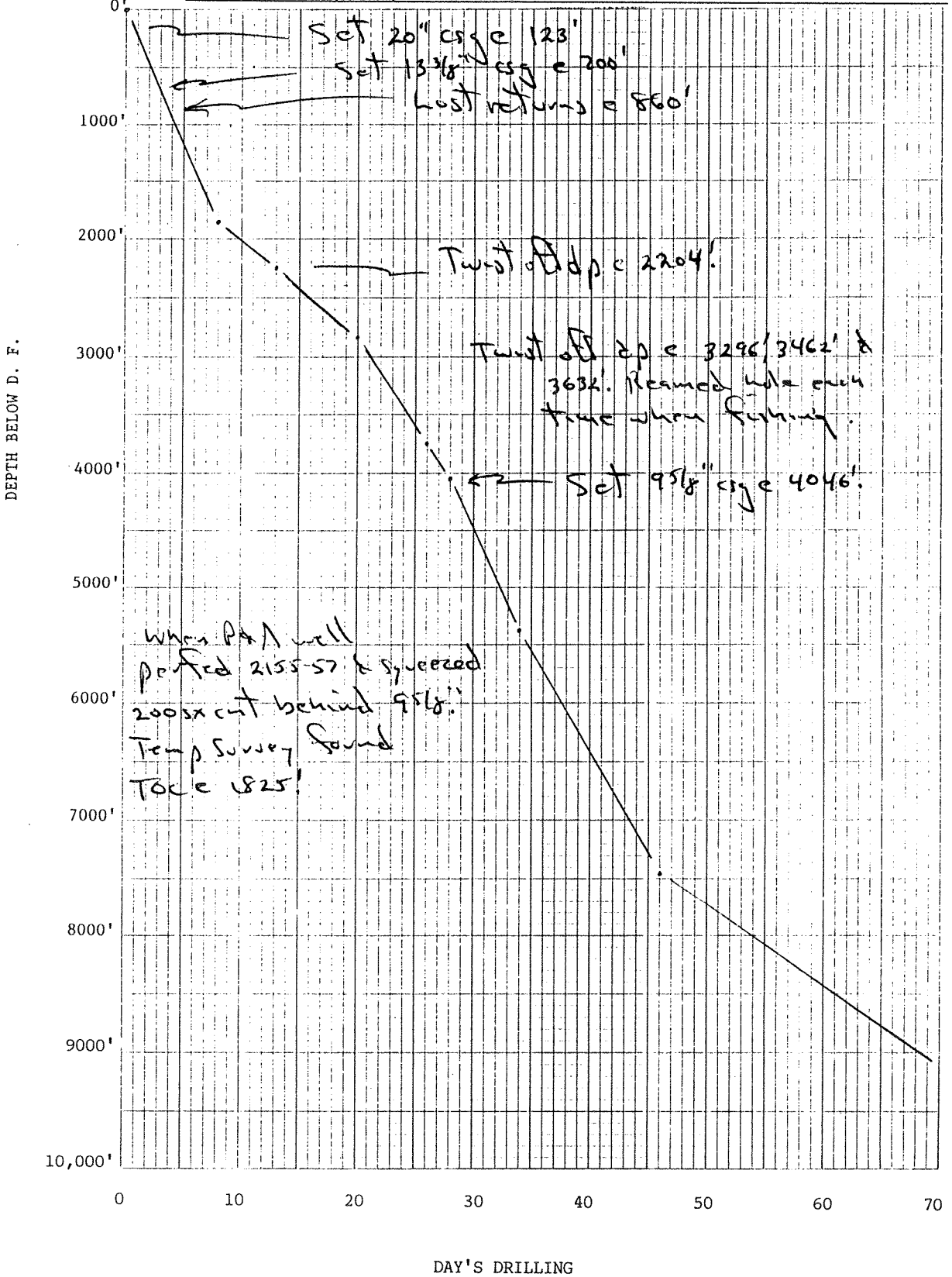
Location 760' FNL, 660' FWL

County Okeechobee

1/4 NW 1/4 NW 1/4 Sec. 5 T 36S R 34E TD 10,838'

Well or Owner's Name Amerada Petroleum Company #1 M. Swenson

Data Source North Fort Myers O/G Well Files



P-237 (W-15813)

RECEIVED

OCT 24 1955

Elev. 54' O.F.

COMPANY Amerada Pet. Corp.

WELL Swenson # 1

LOCATION Okeechobee Co., Fla.

Sec. 5 - 36S - 34E

FLORIDA GEOLOGICAL SURVEY

SHOW VALUES ARE JUDGED AS FOLLOWS:  
 2 - VERY POOR SHOW  
 5 - FAIR SHOW, PROBABLY NOT PRODUCTIVE  
 10 - FAIR SHOW, POSSIBLY PRODUCTIVE  
 15 - GOOD SHOW, PROBABLY PRODUCTIVE  
 20 - VERY GOOD SHOW INDICATIVE OF PRODUCTION

SUPERVISING ENGINEER

*E. J. Anderson*

UNIT

SAND



Dolomite



LIME



Anhydrite



SHALE



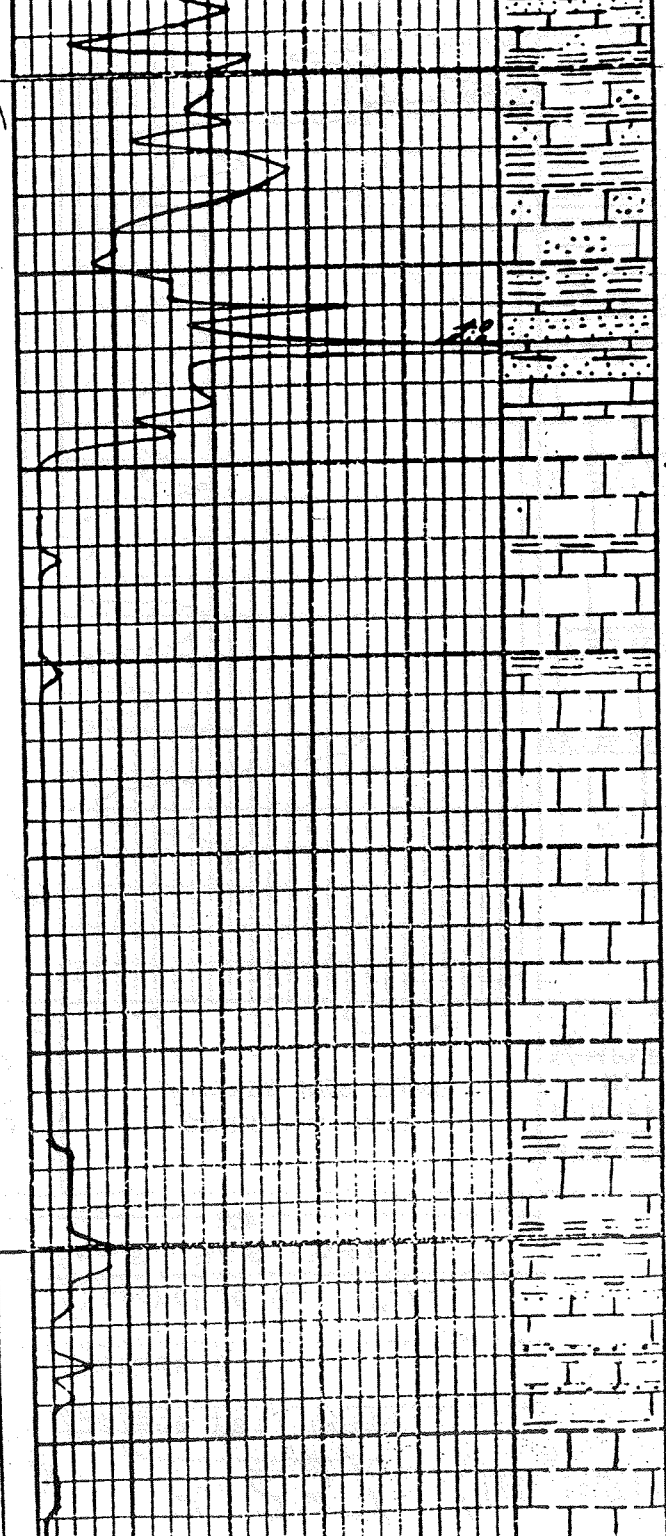
Chalk



MUD RECORD TRIP RECORD BIT RECORD CO. RECORD W V F C	DRILLING RATE MINUTES PER FOOT 12 3 15 20	LITHOLOGY PERCENT IN SAMPLES 25 50 75	DEPTH DRILL PIPE MEASURE- MENTS CORE NOS. 100	Porosity	GAS IN DRILL CUTTINGS HIGH VOLT _____ LOW VOLT .....	GAS IN DRILLING MUD HIGH VOLT _____ LOW VOLT .....
				SHOW VALUES DKL 846 2 5 15 20		
				① To Fair Good		
			150			Coquina unconsolidated to fairly cemented large shaly sandy & dk brn-bk phosphate nodules & gas acc. Med. to v. large sub-spherical fractured in part Shale, yellow-brown to brown, soft & friable as above except shaly in part, etc. in part, etc.
			200			Shale, brown, well jointed, etc. in part, etc. Coquina, etc. in part, etc. in part, etc. etc. in part, etc. in part, etc. in part, etc. etc. in part, etc. in part, etc. in part, etc.
			300			etc. in part, etc. in part, etc. in part, etc. etc. in part, etc. in part, etc. in part, etc. etc. in part, etc. in part, etc. in part, etc.

237

52



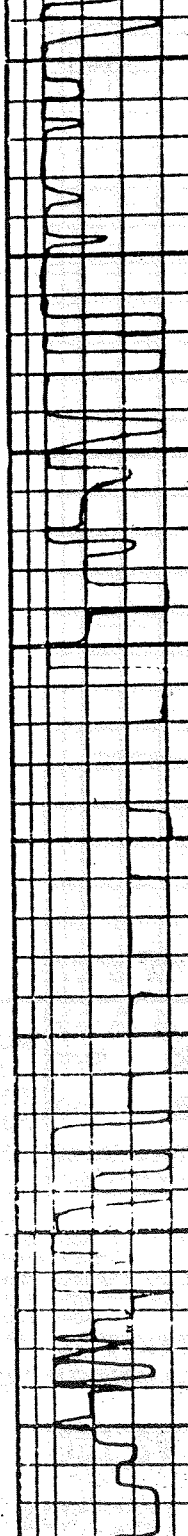
400

42

500

600

700



Chalky... photo  
addition...

Chalky...  
in...

...  
...  
...

...  
...  
...

... except this if you...

...  
...

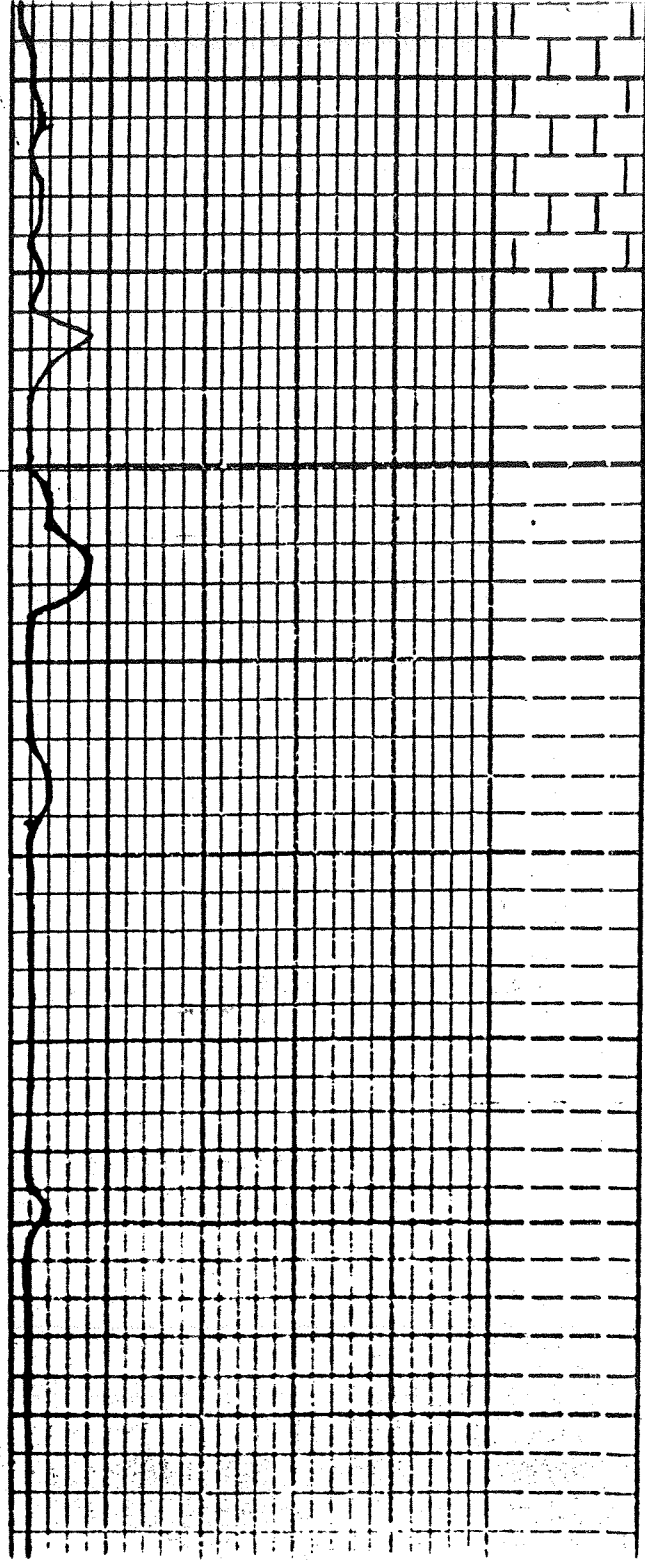
...  
...

...

...  
...

...  
...

23



800

← 860

900

1000

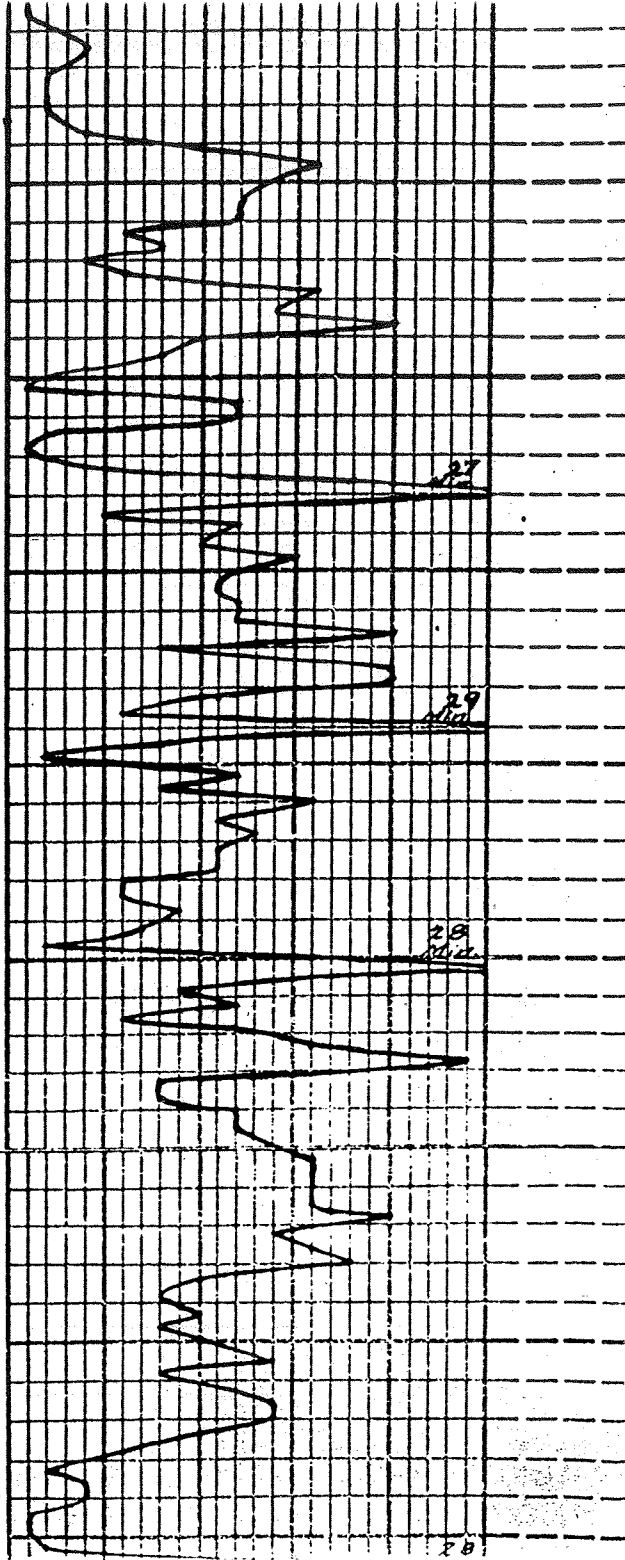
1100



Last Returns at 860'

No Returns

NO RETURNS



1300

27

1400

29

1500

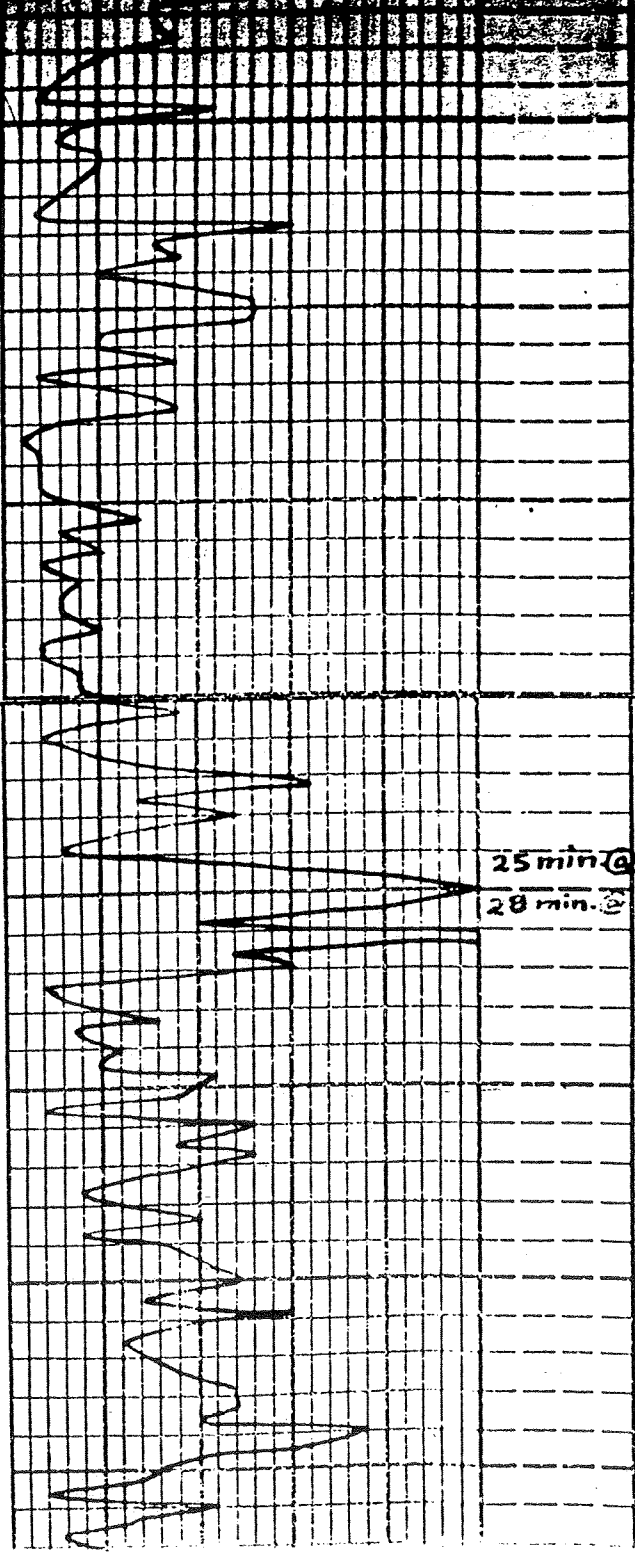
28

1600

28

No Returns

207



1700

1800

25 min @ 50'  
28 min @ 62'

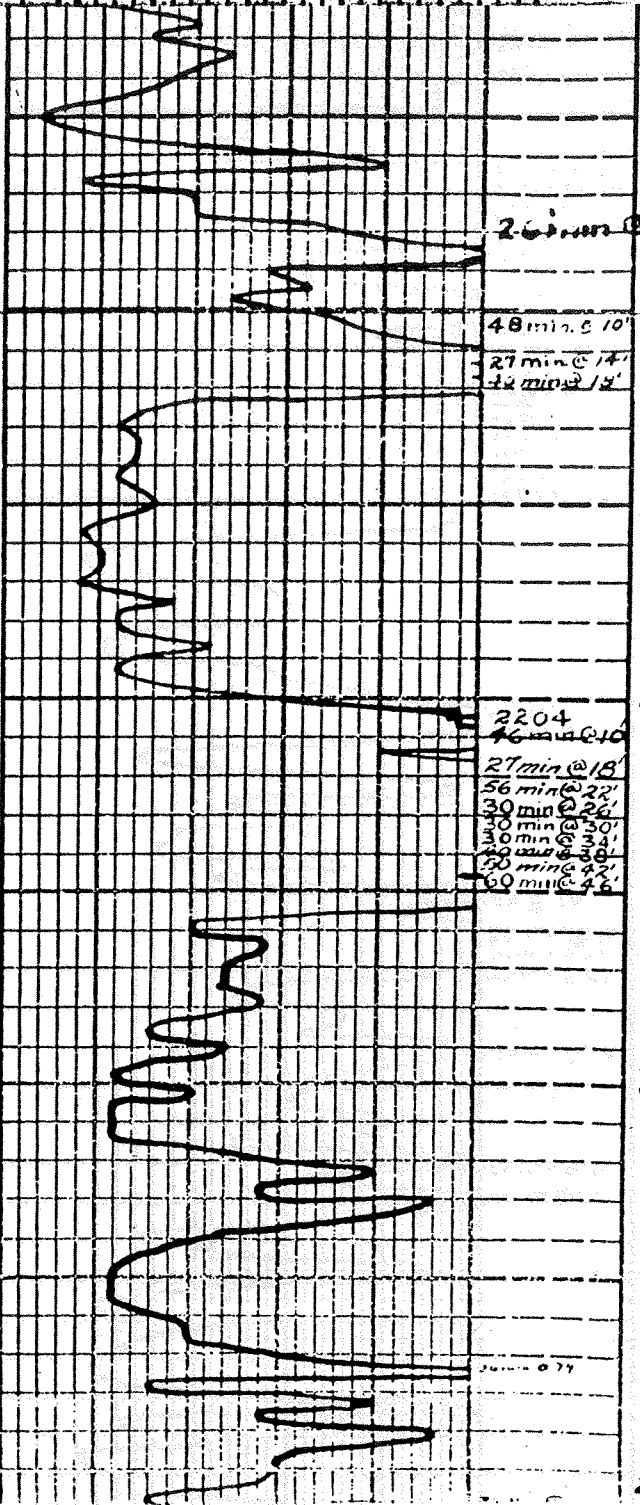
1900

2000

No Returns

297

1200



26 min @ 86'

2100

48 min @ 10'  
27 min @ 14'  
12 min @ 14'

2200

2204  
46 min @ 10'  
27 min @ 18'  
56 min @ 22'  
30 min @ 26'  
30 min @ 30'  
30 min @ 34'  
20 min @ 38'  
50 min @ 42'  
60 min @ 46'

2300

2400  
2400

**No Returns**

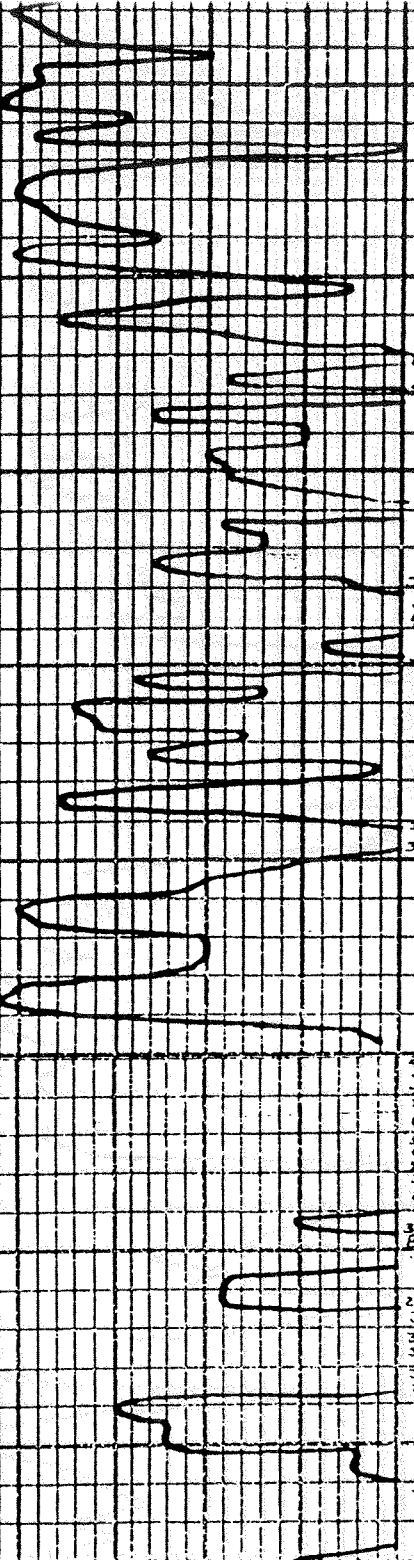
Poss. Chert Zone  
Poss. Dolomite w/ CCL<sub>4</sub> cut in part & Sl.  
Stain in part

**Twist-Off @ 2204**

Sample from drill collars: Ch. wht, soft; chert, wht, hard, speckled; Dolo, brn, dense, non-por; and Dolo, lt. tan, M-Cs, Xln, por w/ CCL<sub>4</sub> cut in part, Sl. Stain in part

Drilled 8' while fishing  
No Returns  
Log by Yalvington from 2254

237



2500

28 min @ 20  
30 min @ 20

24 min @ 20

32 min @ 20  
31 min @ 20  
42 min @ 20

NB

29 @ 20

2600

33 min @ 20  
36 @ 20

2700  
2700

40 @ 20  
38 @ 20  
37 @ 20  
36 @ 20  
35 @ 20  
34 @ 20  
33 @ 20  
32 @ 20  
31 @ 20  
30 @ 20

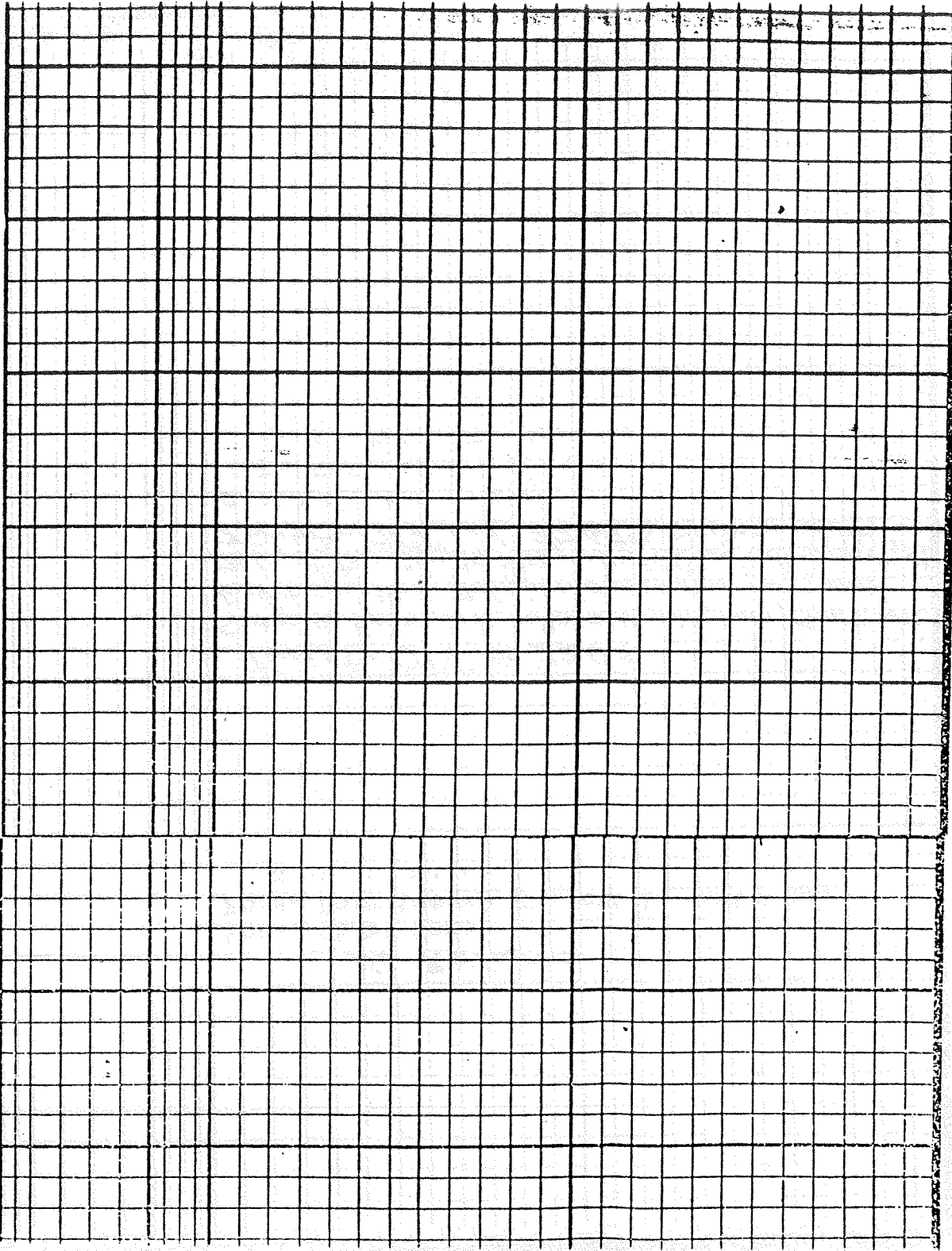
NB

37 @ 20  
36 @ 20  
35 @ 20

27 @ 20  
30 @ 20  
36 @ 20  
33 @ 20  
33 @ 20  
25 @ 20

2800

44 @ 20  
37 @ 20  
40 @ 20  
42 @ 20





# SCHLUMBERGER WELL SURVEYING CORPORATION

## MICROLOGGING®

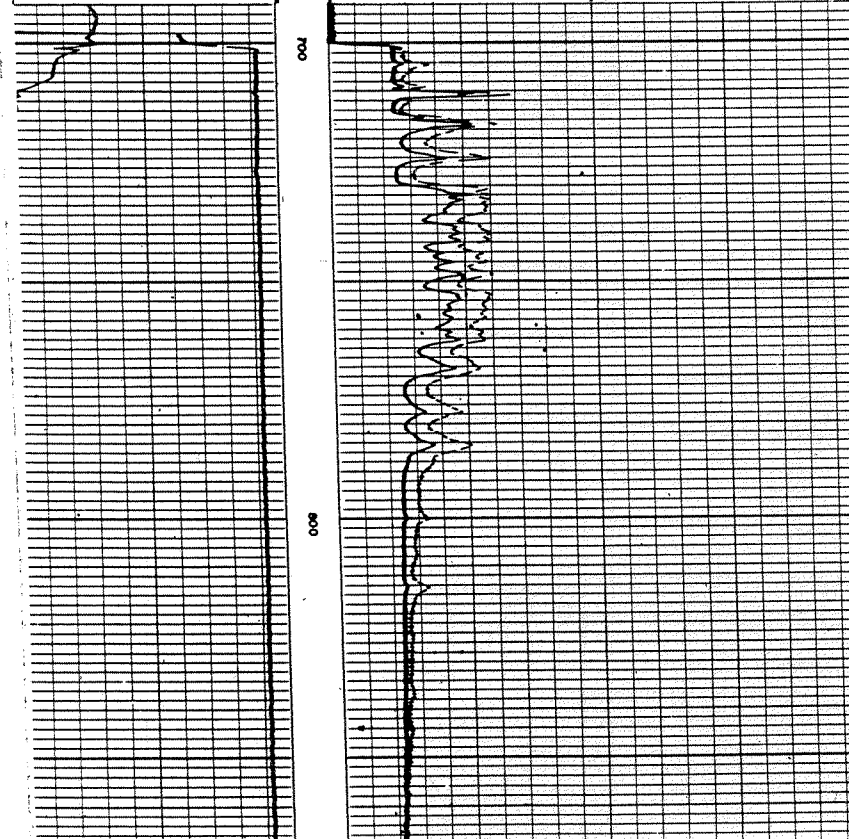


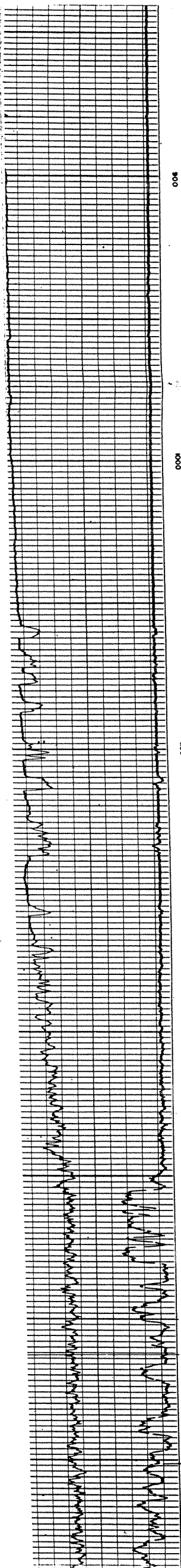
COUNTY OKEECHOBEE C-37202-M FIELD or LOCATION WILDCAT SEC-5-36S-34E WELL MARIE SWENSON #1 COMPANY AMERADA PETROLEUM COMPANY	COMPANY AMERADA PETROLEUM	Location of Well
	COMPANY	MW MW
	WELL MARIE SWENSON #1	#237
	FIELD WILDCAT	
	LOCATION SEC-5-36S-34E	Elevation: D.F.: 54'
	COUNTY OKEECHOBEE	K.B.:
STATE FLORIDA	or G.L.:	
	FILING No.	

RUN No.	ONE				
Date	7-8-55				
First Reading	4043				
Last Reading	700				
Feet Measured	3043				
Csg. Schlum.					
Csg. Driller	4047				
Depth Reached	4046				
Bottom Driller	1' ABOVE ROTARY				
Depth Datum	BRACKISH WATER				
Mud Nat.	BRACKISH WATER				
" Density	-				
" Viscosity	-				
" Resist.	6.8 @ 80 °F	@ °F	@ °F	@ °F	@ °F
" Res. BHT	4.0 @ 110 °F	@ °F	@ °F	@ °F	@ °F
" pH	NA @ °F	@ °F	@ °F	@ °F	@ °F
" Wtr. Loss	NA CC 30 min.	CC 30 min.	CC 30 min.	CC 30 min.	CC 30 min.
Max. Temp. °F					
Bit Size	12-1/4"				
Spqgs.—					
LIMIT DEPTH	UPPER 1250				
Opr. Rig Time	2 HRS.				
Truck No.	1765-L				
Recorded By	ETHERIDGE				
Witness By	YELVINGTON-HENDERSON				

REMARKS  
 MUD LOG: FM 4.0  
 SONDE TYPE: WSP  
 PAD TYPE: HYDRAULIC - INFLATED TO 137/16"

SPONTANEOUS-POTENTIAL millivolts	DEPTH	RESISTIVITY -ohms. m <sup>2</sup> /m	
- 20 +		0 Micro Inverse 1" x 1" 20	40
S P From BARK UP PAD		0 Micro Normal 2" 20	40
MICROLOG CALIPER			
6 7 8 9 10 11 12 13 14 15 16			
Hole Diameter in Inches			





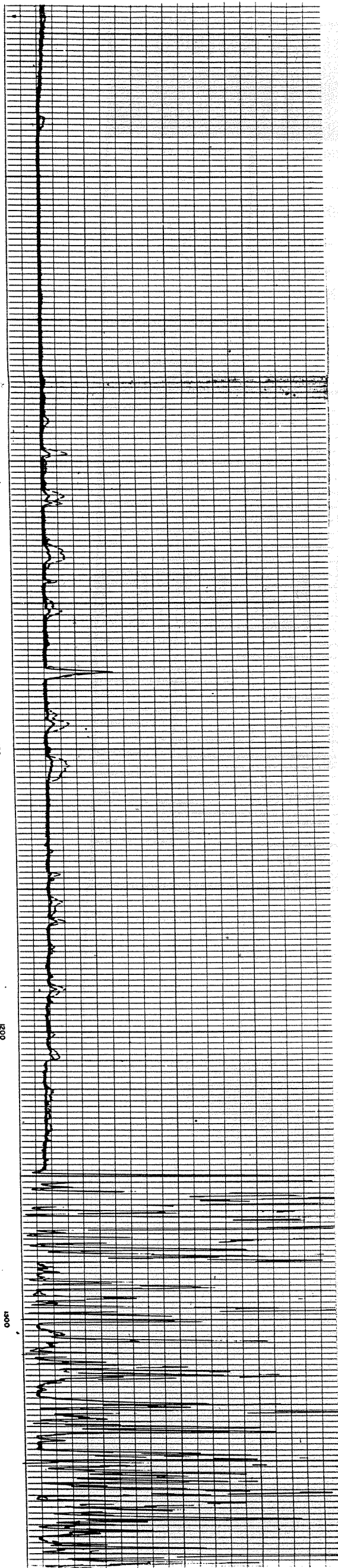
006

000

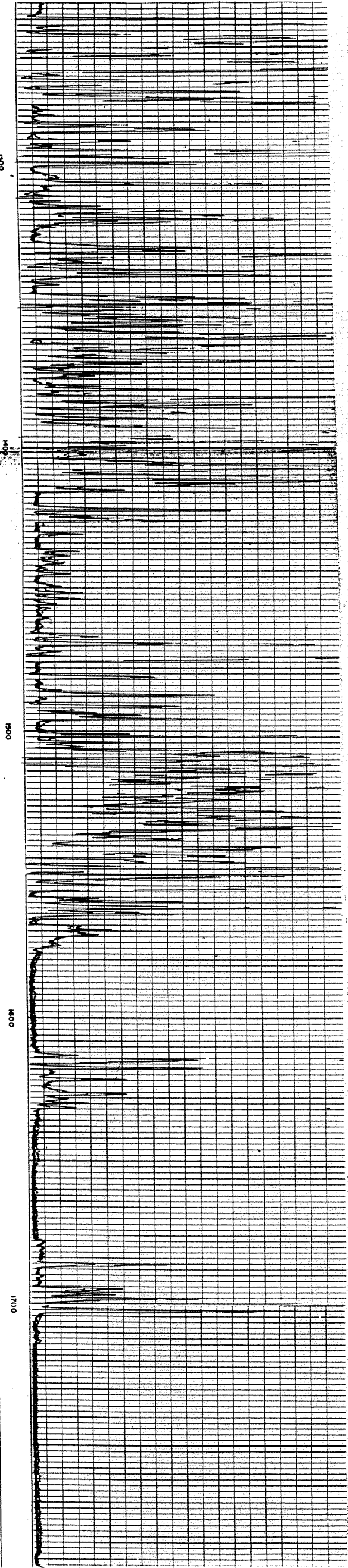
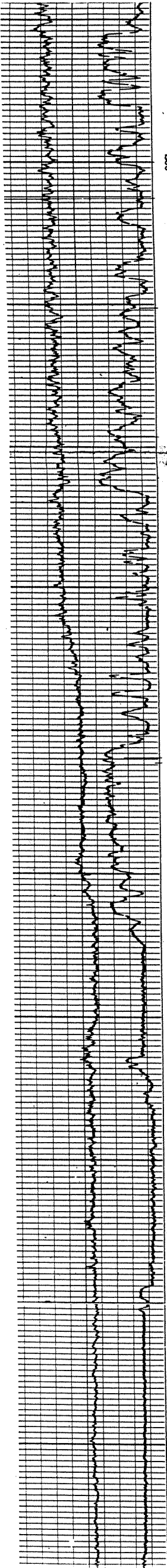
008

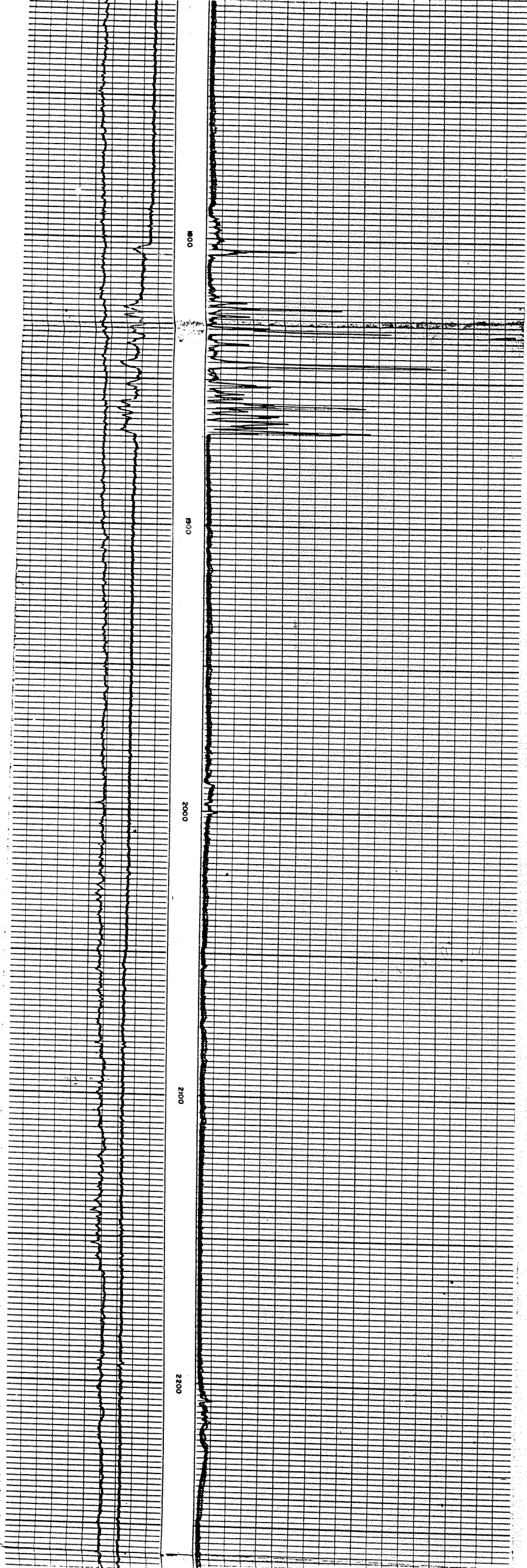
020

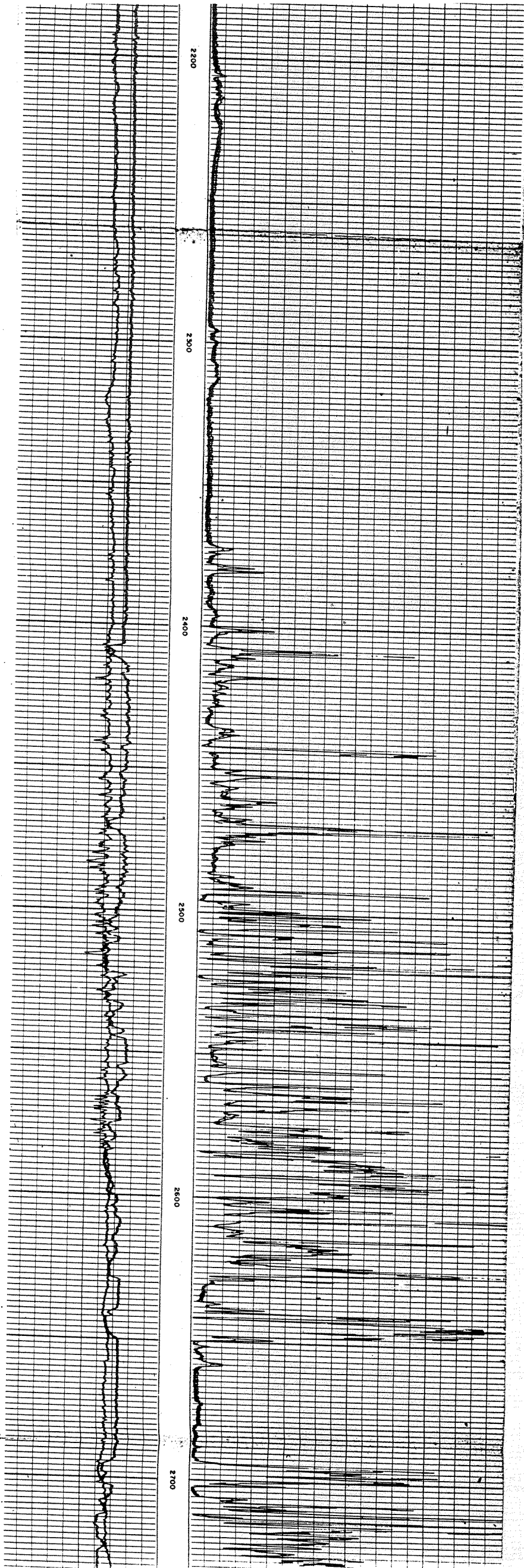
005

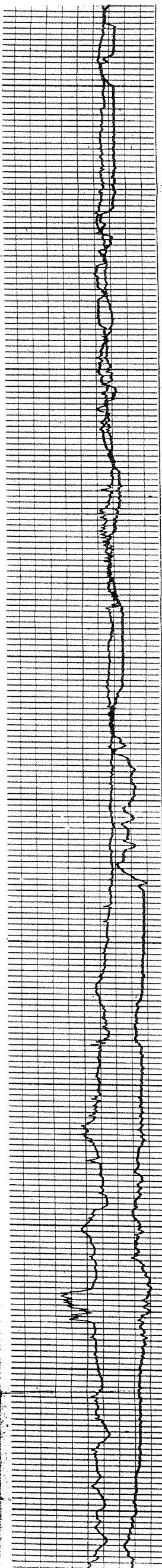


Faint, illegible text on the right side of the page, possibly bleed-through from the reverse side of the paper.









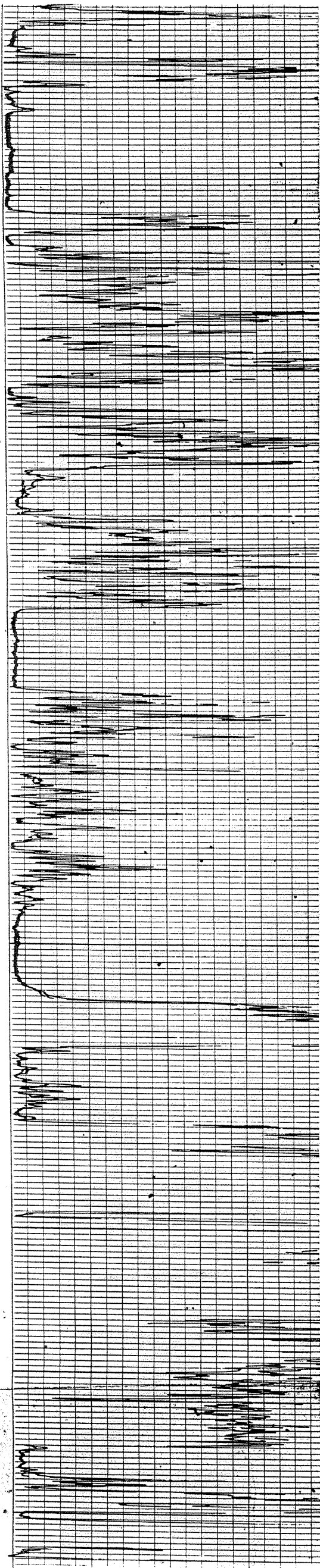
2700

2800

2900

3000

3100



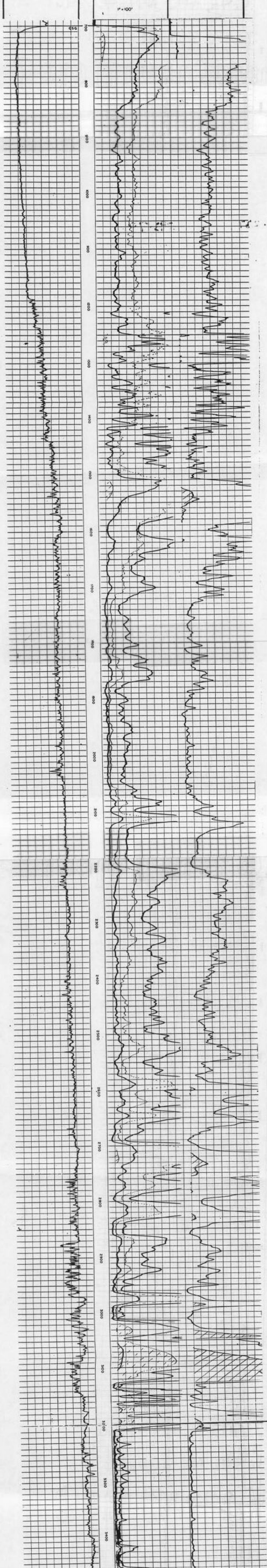
SCHLUMBERGER WELL SURVEYING CORPORATION		
Electrical Log		
COUNTY: OKEECHOBEE FIELD or LOCATION: WILDCAT WELL: MARIE SWENSON #1 COMPANY: AMERADA PETR. CORP.	COMPANY: AMERADA PETROLEUM CORPORATION WELL: MARIE SWENSON #1 FIELD: WILDCAT LOCATION: SEC-5-36S-34W	Location of Well: NW NW Elevation: D.F. 54' K.B. 56' or G.L. 44'
STATE: FLORIDA		FILING No.

Cuttings are available in the Ft Myers oil/gas section field office 128'-7750' & also in FGS cuttings library in Tallahassee as W-3739.

RUN No.	ONE	TWO	THREE
Date	7-8-55	7-26-55	9-13-55
First Reading	4047	7460	10836
Last Reading	700	4045	7460
Feet Measured	3347	3415	3376
Csg. Schlum.	700	4045	4045
Csg. Driller	700	4045	4046
Depth Reached	4047	7460	10836
Bottom Driller	4046	7457	10838
Depth Datum	ONE FOOT ABOVE ROTARY OR 13' ABOVE BRADEN-HEAD		
Mud Not.	BRACKISH WATER-LINE BASE		
" Density	-	9.2	9.9
" Viscosity	-	43	44
" Resist.	6.8 @ 80°F	0.6 @ 86°F	5 @ 82°F
" Res. BHT	- @ °F	D.39 @ 140°F	- @ °F
" pH	- @ °F	NA @ °F	13 @ °F
" Wtr. Loss	- CC 30 min.	7.2 CC 30 min.	7.6 CC 30 min.
Max. Temp. °F	110	140	NA
Bit Size	12 1/4"	8 5/8"	8 5/8"
Spchs.—AM	16"	16"	16"
A M	64"	64"	64"
AO	18 1/8"	18 1/8"	18 1/8"
Opr. Rig Time	1 HR.	2 HRS.	2 HRS.
Truck No.	1765-L	1755-L	2760-LAKELAND
Recorded By	ETHERIDGE	CALLAWAY	VAN NESS
Witness By	YELVINGTON	HENDERSON	NEWKIRK-STUART

REMARKS: PLEASE NOTE: CORES AS SHOWN ON LOGS ONLY TO INDICATE AMOUNT OF CORE CUT AND AMOUNT RECOVERED. ALL INFORMATION SHOWN ON THIS LOG IN REFERENCE TO CORES, PERFORATIONS, DRILL STEM TESTS FURNISHED BY AMERADA PETR. CORP.

SPONTANEOUS-POTENTIAL millivolts	RESISTIVITY -ohms. m <sup>2</sup> /m	RESISTIVITY -ohms. m <sup>2</sup> /m
0	AM - 16"	AO - 18 1/8"
0	AMP NORMAL	10
0	AM - 64"	50
0	HIGH SCALE	500



Copyright © 1995 by Digital Formation, Inc. All Rights Reserved.  
 File Name: 015\_700000.dfm  
 Title: 700000.dfm  
 Date: Tuesday, December 17, 1996 at 08:04:04  
 Plot: 400 - 3000 Data 2200.dfm

This software and the data contained herein are the property of Digital Formation, Inc. and are not to be distributed, copied, or otherwise used in any manner without the express written permission of Digital Formation, Inc. All Rights Reserved.

